

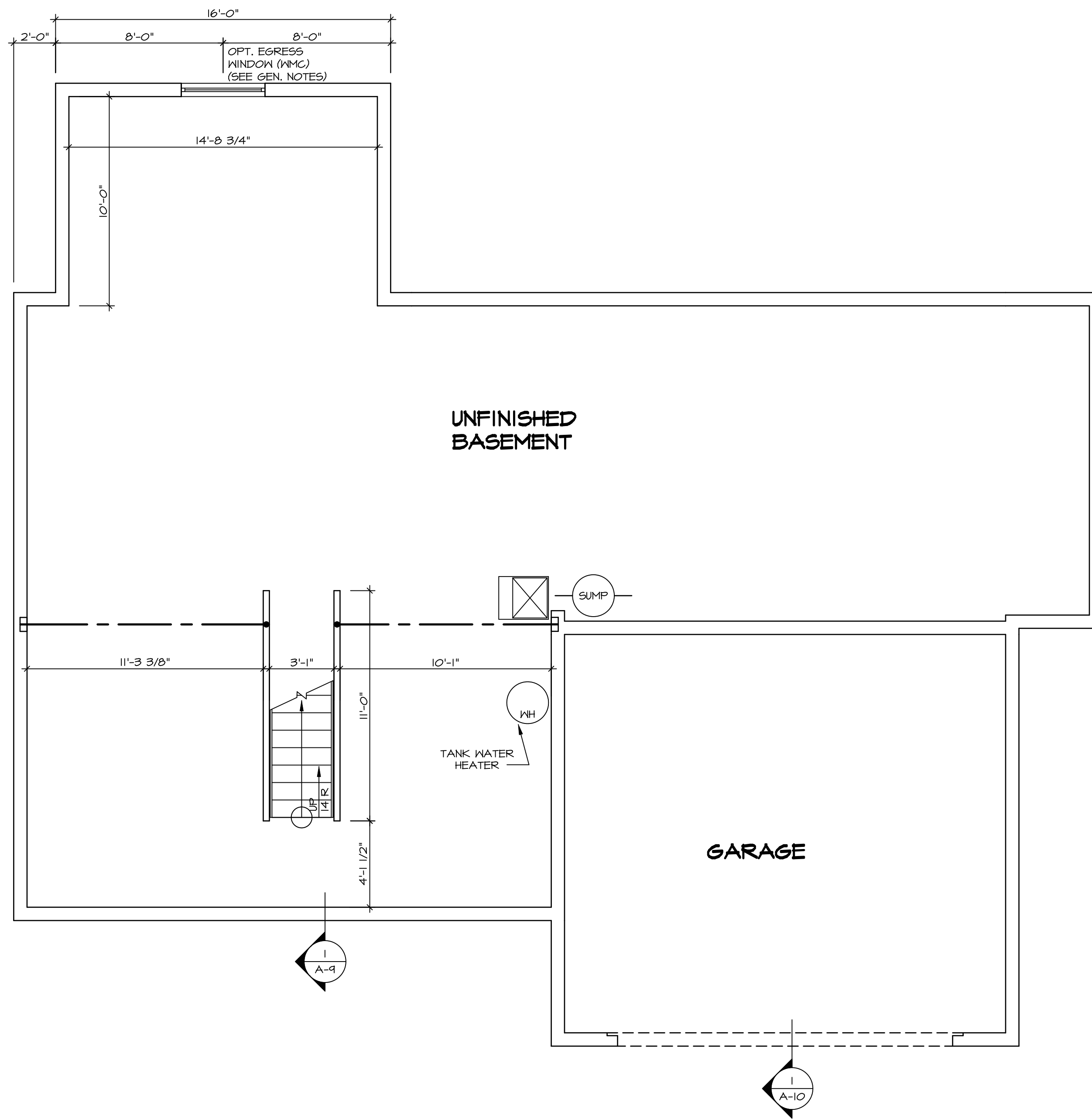
1 PLUMBING PLAN
A-5 SCALE: 1/4" = 1'-0"

| | | |
|---------------------------------|---------------------------------------|--------------------------|
| SHEET NO. A-5 | MODEL PALERMO | SET NO. PALOO |
| OPTION DESCRIPTION 4B | VERSION 03 | DRAWN BY DATE: |
| | DRAWING TITLE PLUMBING PLAN | OPTION 100 |

NVR
NVR, Inc. Suite 100
5285 Westpark Drive
Frederick, MD 21703

© NVR, Inc. The owner expressly reserves the right to modify or change these plans without the consent of NVR, Inc. in these plans. These plans are not to be reproduced, changed or copied in any way without the written consent of NVR, Inc. NVR, Inc. is not responsible for any errors or omissions in these plans.

| REV. NO. | DATE | REMARKS |
|----------|------|---------|
| | | |
| | | |
| | | |
| | | |
| | | |
| | | |
| | | |
| | | |
| | | |



LEGEND

| | |
|--|---|
| | BEARING WALL |
| | NON BEARING WALL |
| | INDICATES BEARING FROM POINT-LOAD ABOVE |
| | JACKS |
| | BEAM/HEADER |
| | PAD FOOTING |
| | STEEL COLUMN |
| | PORTAL FRAME |
| | JOIST/TRUSS |
| | LVL |
| | ENGINEERING PAGE NUMBER |

SEE FC DETAILS FOR FRAMING CONNECTORS

- FLOOR PLAN NOTES**
1. ALL HEADERS ARE (2) 2x6 w/ 2x4 WALLS OR (3) 2x6 w/ 2x6 WALLS, UNLESS OTHERWISE NOTED.
 2. ALL HEADERS TO HAVE (1) 2x4 OR 2x6 JACK EACH END, UNLESS OTHERWISE NOTED.
 3. ALL EXTERIOR WALLS TO BE 4" AND ALL INTERIOR WALLS TO BE 3 1/2", UNLESS OTHERWISE NOTED.
 4. HATCHED AREAS INDICATE DROPPED CEILINGS. ALL DROPPED CEILINGS ARE 12" UNLESS OTHERWISE NOTED.
 5. SEE "BRACED WALL PANEL DETAIL SHEET" FOR SPECIAL WALL FRAMING LOCATIONS AND HEADER SIZES, IF APPLICABLE.
 6. SEE STANDARD DETAIL CATEGORY "IT" SHEET(S) FOR INTERIOR TRIM DETAILS.
 7. SEE ARCHITECTURAL DETAIL SHEET "AD" FOR HOUSE SPECIFIC INTERIOR TRIM OPTION TABLE.
 8. ALL WINDOWS HAVE 7'-0" 1/2" HEADER HEIGHT UNLESS OTHERWISE NOTED.
 9. ALL CASED OPENINGS AT 7'-11", UNLESS OTHERWISE NOTED.

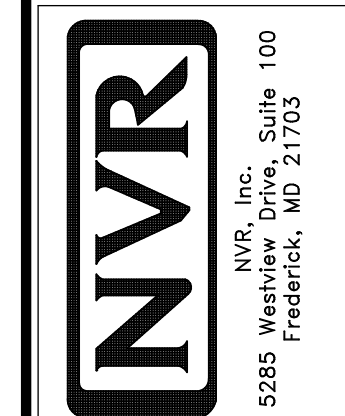
GYPSUM NOTES

AT GARAGE:
GYPSUM BOARD AT COMMON WALLS, CEILINGS, BEAM WRAPS AND SUPPORTS PER STANDARD DETAIL FA-1(b) FIRE ASSEMBLIES OR AS REQUIRED BY LOCAL CODE.

AT STAIRS:
1/2" GYPSUM BOARD AT UNDERSIDE OF STAIRS AND WALLS IN CLOSET

| REV. NO. | DATE | REMARKS |
|----------|----------|------------------------|
| 1 | 08/05/16 | TH - DRAWING ALIGNMENT |

© NVR, Inc. reserves the right to modify or change these plans without notice. These plans are not to be reproduced, changed or altered in any way without the written consent of NVR, Inc.



| | |
|--------------------|---------------------|
| MODEL | PALERMO |
| DRAWING TITLE | BASEMENT FLOOR PLAN |
| OPTION DESCRIPTION | |
| SHEET NO. | A-6 |
| OPTION | 51 |
| SET NO. | PALOO |
| VERSION | 03 |
| DRAWN BY | |
| DATE: | |
| OPTION | |

BASEMENT FLOOR PLAN
SCALE: 1/4" = 1'-0"

| FIRST FLOOR JACK SCHEDULE | | | | |
|---------------------------|-------------------------------|---------|------------|-----------------|
| IDENTIFIER | DESCRIPTION | OPTIONS | ENG. NUM. | REMARKS |
| J106 | JACK - (2) 2X4 SPF STUD GRADE | | 1012 | |
| J107 | JACK - (2) 2X4 SPF STUD GRADE | | 1012 | |
| J108 | JACK - (2) 2X4 SPF STUD GRADE | | 1012 | |
| J114 | JACK - (2) 2X4 SPF STUD GRADE | EDQMAP | 1075, 1078 | |
| J120 | JACK - (4) 2X6 SPF STUD GRADE | MAA | 1019 | |
| J121 | JACK - (3) 2X6 SPF STUD GRADE | MAA | 1019 | FIELD INSTALLED |
| J122 | JACK - (3) 2X4 SPF STUD GRADE | SRN | 1040 | |
| J124 | JACK - (3) 2X4 SPF STUD GRADE | ELC | 1021 | |
| J125 | JACK - (2) 2X4 SPF STUD GRADE | ELC | 1009 | |
| J126 | JACK - (2) 2X4 SPF STUD GRADE | ELC | 1009 | |
| J127 | JACK - (2) 2X4 SPF STUD GRADE | ELC | 1038 | |
| J128 | JACK - (2) 2X4 SPF STUD GRADE | ELC | 1038 | |
| J138 | JACK - (2) 2X4 SPF STUD GRADE | ELC | 1021 | |
| J150 | JACK - (3) 2X4 SPF STUD GRADE | GCF | 1044 | |
| J151 | JACK - (3) 2X4 SPF STUD GRADE | GCF | 1044 | |
| J154 | JACK - (2) 2X4 SPF STUD GRADE | GCF | 1122 | |
| J155 | JACK - (2) 2X4 SPF STUD GRADE | GCF | 1122 | |

LVL PLY TO PLY FASTENING SCHEDULE:

1A - (2) FLY UP TO AND INCLUDING 1 7/8" TALL; FASTEN FLIES W/ (2) ROWS 16D NAILS AT 12" O.C.
 2A - (2) FLY 14" TO AND INCLUDING 18" TALL (INCLUSIVE); FASTEN FLIES W/ (3) ROWS 16D NAILS AT 12" O.C.
 3A - (2) FLY 20" TALL AND OVER; FASTEN FLIES W/ (4) ROWS 16D NAILS AT 12" O.C.
 4A - (3) FLY UP TO AND INCLUDING 1 7/8" TALL; FASTEN FLIES W/ (2) ROWS 16D NAILS AT 12" O.C. FROM EACH SIDE
 5A - (3) FLY 14" TO AND INCLUDING 18" TALL (INCLUSIVE); FASTEN FLIES W/ (3) ROWS 16D NAILS AT 12" O.C. FROM EACH SIDE
 6A - (3) FLY 20" TALL AND OVER; FASTEN FLIES W/ (4) ROWS 16D NAILS AT 12" O.C. FROM EACH SIDE

| FIRST FLOOR BEAM/HEADER SCHEDULE | | | | | |
|----------------------------------|---------------------------|------------|---------|------------|----------------------|
| IDENTIFIER | DESCRIPTION | LENGTH | OPTIONS | ENG. NUM. | REMARKS |
| B101-3 | LVL - 16 | 14'-4 1/2" | MAA | 1019 | 5A, FIELD INSTALL |
| B106-2 | LVL - 16 | 17'-4" | ZSU | 1044 | 2A, FIELD INSTALL |
| PF104-2 | EXT HEADER - 2X12 - 2 PLY | 11'-4" | GCF | 1054, 1148 | 2-PLY, FIELD INSTALL |

| LEGEND | |
|--------|---|
| | BEARING WALL |
| | NON BEARING WALL |
| | INDICATES BEARING FROM POINT-LOAD ABOVE |
| | JACKS |
| | BEAM/HEADER |
| | PAD FOOTING |
| | STEEL COLUMN |
| | PORTAL FRAME |
| | JOIST/TRUSS |
| | LVL |
| | ENGINEERING PAGE NUMBER |

SEE FC DETAILS FOR FRAMING CONNECTORS

| STEEL COLUMN SCHEDULE | | | | | |
|-----------------------|-------|--------|---------|-----------|---------|
| IDENTIFIER | STYLE | HEIGHT | OPTIONS | ENG. NUM. | REMARKS |
| | | | | | |
| | | | | | |

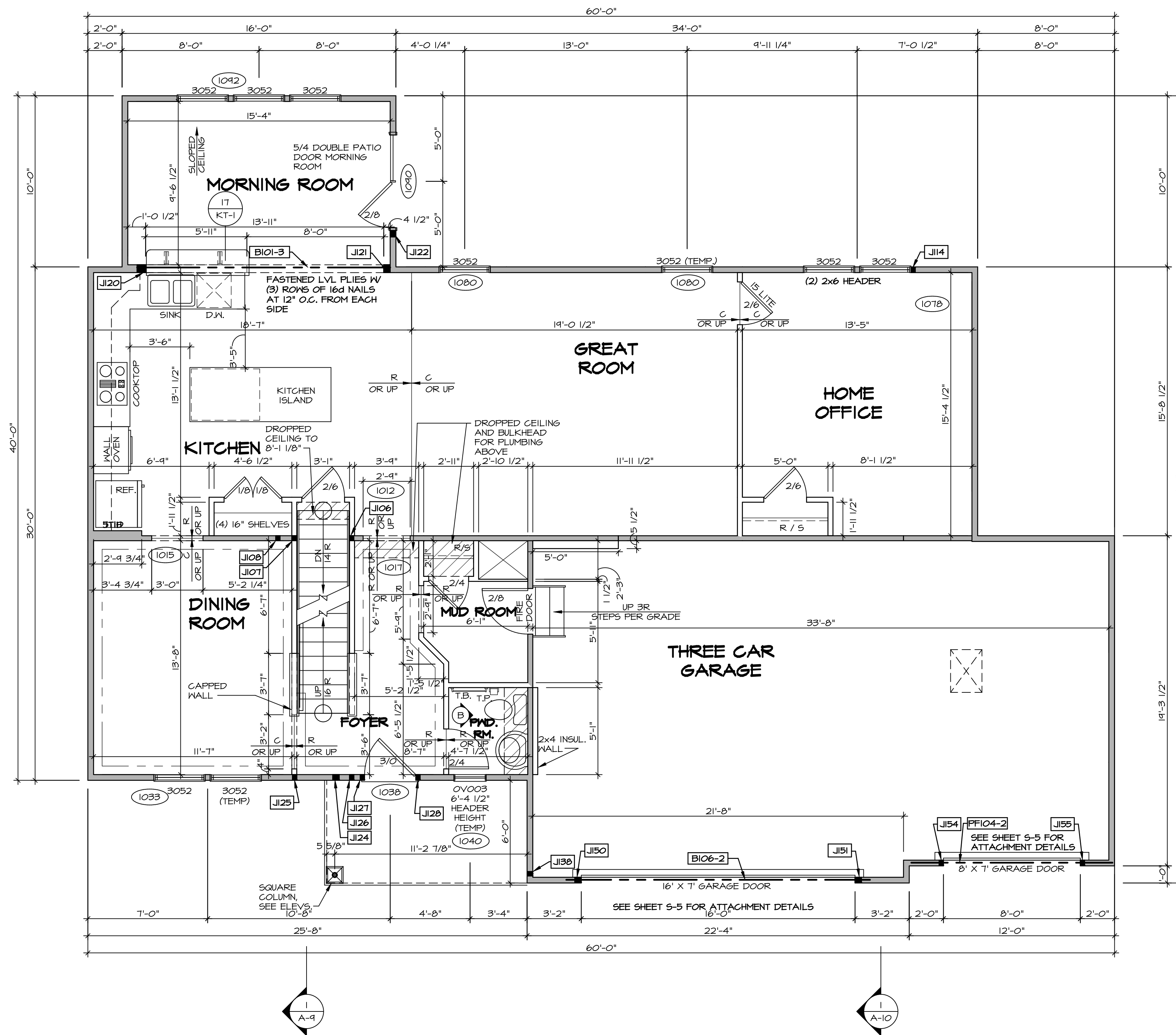
FLOOR PLAN NOTES

- ALL HEADERS ARE (2) 2x6 w/ 2x4 WALLS OR (3) 2x6 w/ 2x6 WALLS, UNLESS OTHERWISE NOTED.
- ALL HEADERS TO HAVE (1) 2x4 OR 2x6 JACK AND KING STUD EACH END, UNLESS OTHERWISE NOTED.
- ALL EXTERIOR WALLS TO BE 4" w/ OSB OR 3 1/2" w/ T-PLY, ALL INTERIOR WALLS TO BE 3 1/2", UNLESS OTHERWISE NOTED.
- HATCHED AREAS INDICATE DROPPED CEILINGS. ALL DROPPED CEILINGS ARE 12" UNLESS OTHERWISE NOTED.
- SEE "BRACED WALL PANEL DETAIL SHEET" FOR SPECIAL WALL FRAMING LOCATIONS AND HEADER SIZES, IF APPLICABLE.
- SEE STANDARD DETAIL CATEGORY "I1" SHEET(S) FOR INTERIOR TRIM DETAILS.
- SEE ARCHITECTURAL DETAIL SHEET "AD" FOR HOUSE SPECIFIC INTERIOR TRIM OPTION TABLE.
- ALL WINDOWS HAVE 7'-0" 1/2" HEADER HEIGHT UNLESS OTHERWISE NOTED.
- ALL HEADERS IN NON-BEARING WALLS SHALL BE A SINGLE FLAT 2X4 OR 2X6 ATTACHED TO CRIPPLES ABOVE, UNLESS OTHERWISE NOTED.

GYPSUM NOTES

AT GARAGE:
 GYPSUM BOARD AT COMMON WALLS, CEILINGS, BEAM WRAPS AND SUPPORTS PER STANDARD DETAIL FA-1(b) FIRE ASSEMBLIES OR AS REQUIRED BY LOCAL CODE.

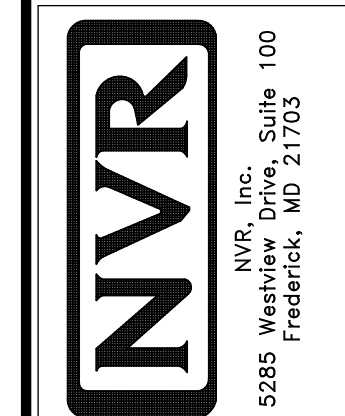
AT STAIRS:
 1/2" GYPSUM BOARD AT UNDERSIDE OF STAIRS AND WALLS IN CLOSET



FIRST FLOOR PLAN
 SCALE: 1/4" = 1'-0"

| REV. NO. | DATE | REMARKS |
|----------|----------|--------------------------------|
| 1 | 09/04/16 | TH - DRAWING ALIGNMENT |
| 2 | 07/17/17 | SL5 - T-PLY CONVERSION PROJECT |

© NVR, Inc. reserves the right to modify these plans at any time without notice. These plans are not to be reproduced, changed or altered in any way without the written consent of NVR, Inc.



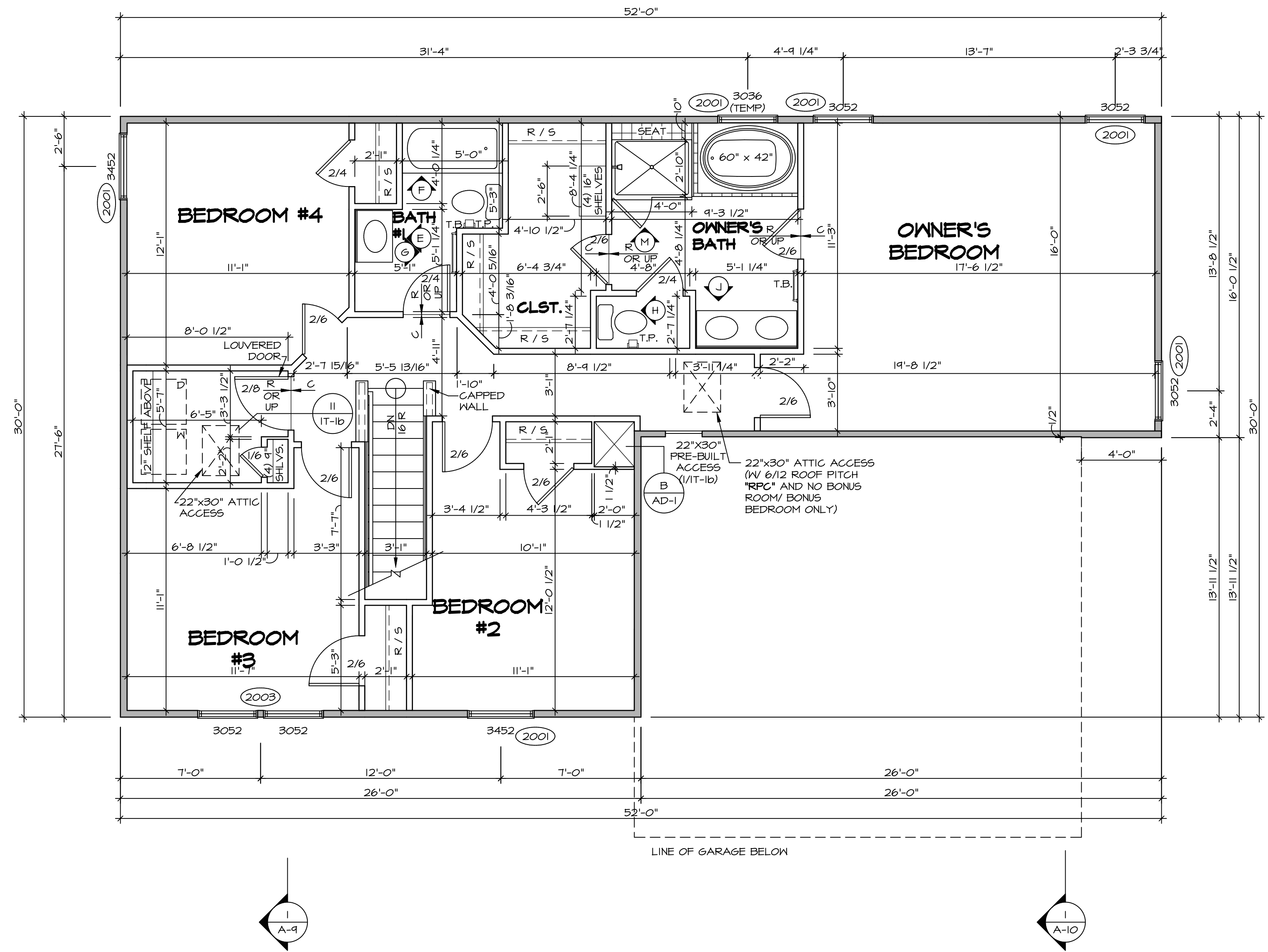
| | |
|---------------|------------|
| SET NO. PALOO | VERSION 03 |
| DRAWN BY | DATE: |
| OPTION | OPTION |

PALERMO
 DRAWING TITLE
 FIRST FLOOR PLAN
 OPTION DESCRIPTION

| SECOND FLOOR JACK SCHEDULE | | | | |
|----------------------------|-------------|---------|-----------|---------|
| IDENTIFIER | DESCRIPTION | OPTIONS | ENG. NUM. | REMARKS |
| | | | | |

| LEGEND | |
|--------|---|
| | BEARING WALL |
| | NON BEARING WALL |
| | INDICATES BEARING FROM POINT-LOAD ABOVE |
| | JACKS |
| | BEAM/HEADER |
| | PAD FOOTING |
| | STEEL COLUMN |
| | PORTAL FRAME |
| | JOIST/TRUSS |
| | LVL |
| | ENGINEERING PAGE NUMBER |

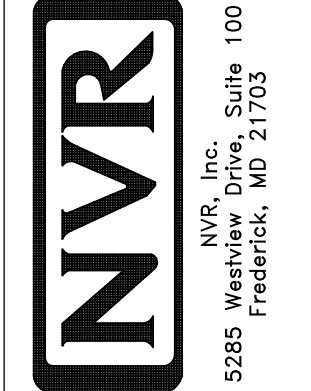
- FLOOR PLAN NOTES**
- ALL HEADERS ARE (2) 2x6 w/ 2x4 WALLS OR (3) 2x6 w/ 2x6 WALLS, UNLESS OTHERWISE NOTED.
 - ALL HEADERS TO HAVE (1) 2x4 OR 2x6 JACK AND KING STUD EACH END, UNLESS OTHERWISE NOTED.
 - ALL EXTERIOR WALLS TO BE 4" w/ OSB OR 3 1/2" w/ T-PLY, ALL INTERIOR WALLS TO BE 3 1/2", UNLESS OTHERWISE NOTED.
 - HATCHED AREAS INDICATE DROPPED CEILING. ALL DROPPED CEILING ARE 12" UNLESS OTHERWISE NOTED.
 - SEE "BRACED WALL PANEL DETAIL SHEET" FOR SPECIAL WALL FRAMING LOCATIONS AND HEADER SIZES, IF APPLICABLE.
 - SEE STANDARD DETAIL CATEGORY "1T" SHEET(S) FOR INTERIOR TRIM DETAILS.
 - SEE ARCHITECTURAL DETAIL SHEET "AD" FOR HOUSE SPECIFIC INTERIOR TRIM OPTION TABLE.
 - ALL WINDOWS HAVE 7'-0 1/2" HEADER HEIGHT UNLESS OTHERWISE NOTED.
 - ALL HEADERS IN NON-BEARING WALLS SHALL BE A SINGLE FLAT 2x4 OR 2x6 ATTACHED TO GRIPPLES ABOVE, UNLESS OTHERWISE NOTED.



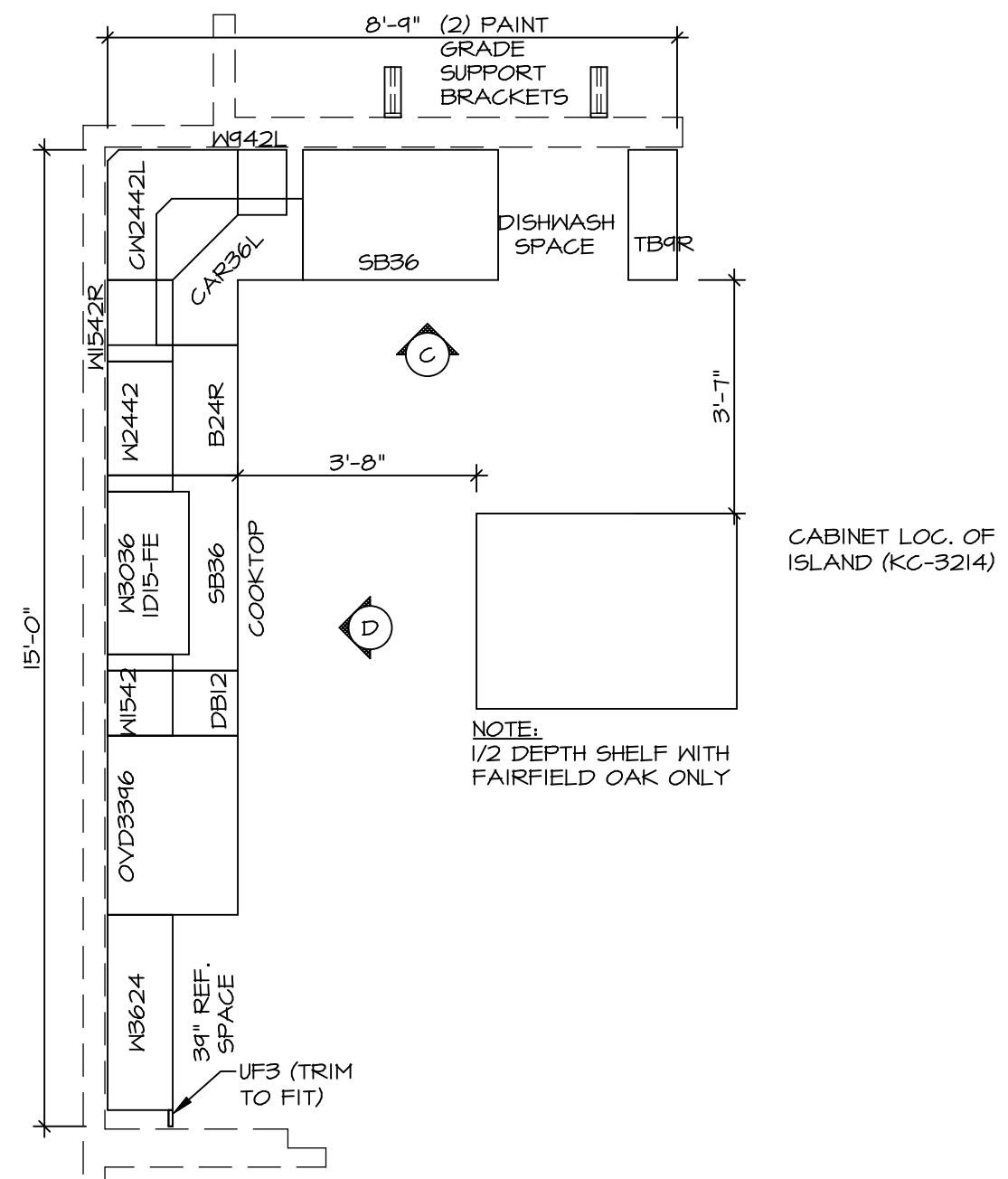
SECOND FLOOR PLAN
SCALE: 1/4" = 1'-0"

| REV. NO. | DATE | REMARKS |
|----------|----------|--------------------------------|
| 1 | 08/04/18 | TH - DRAWING ALIGNMENT |
| 2 | 07/12/17 | SLS - T-PLY CONVERSION PROJECT |

© NVR, Inc. expressly reserves the right to modify or amend these plans at any time without notice. These plans are not to be reproduced, changed or copied in any way without the written consent of NVR, Inc.

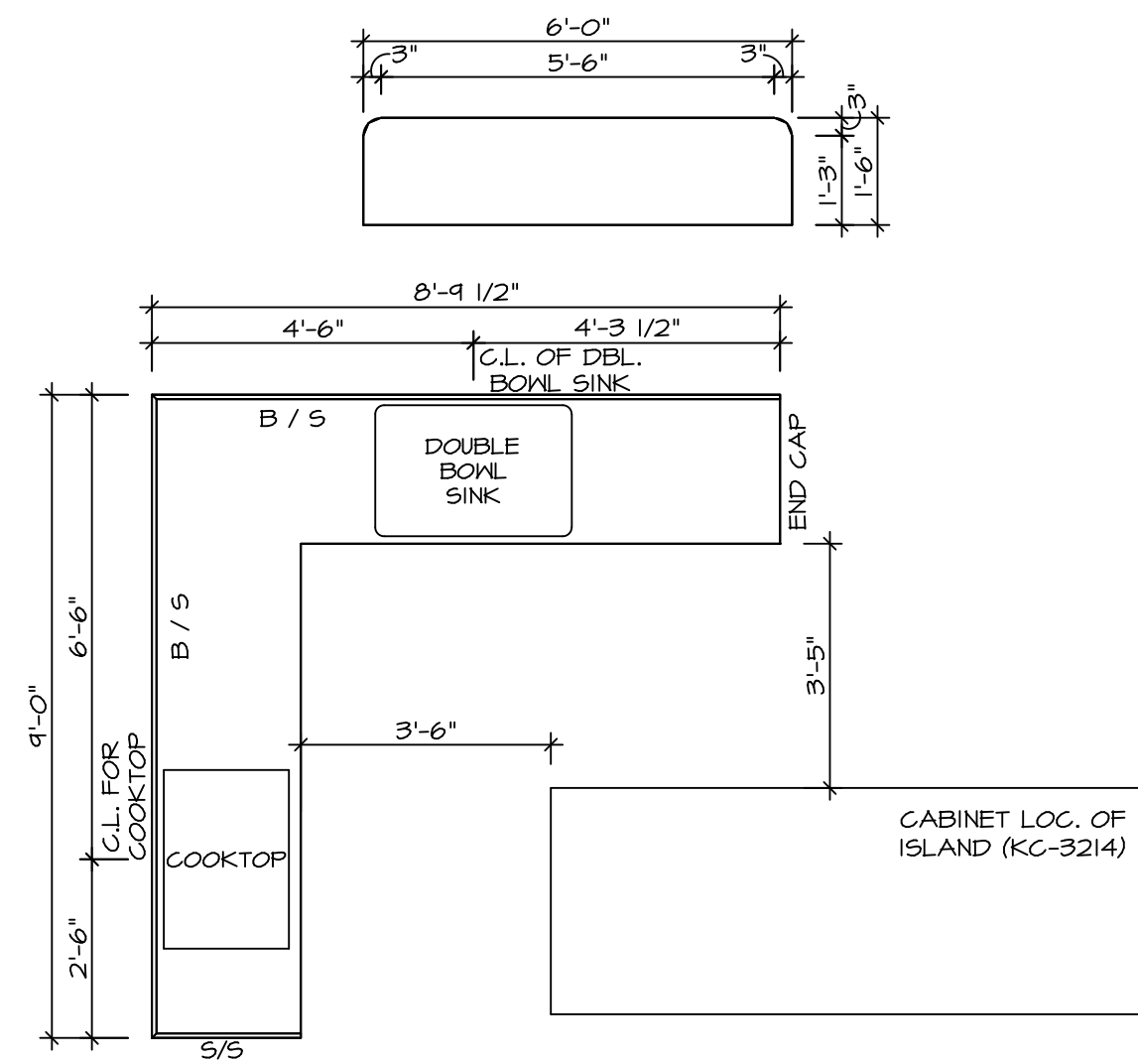


| | |
|----------|---------|
| MODEL | PALERMO |
| SET NO. | PALOO |
| VERSION | 03 |
| DRAWN BY | |
| DATE: | |
| OPTION | |



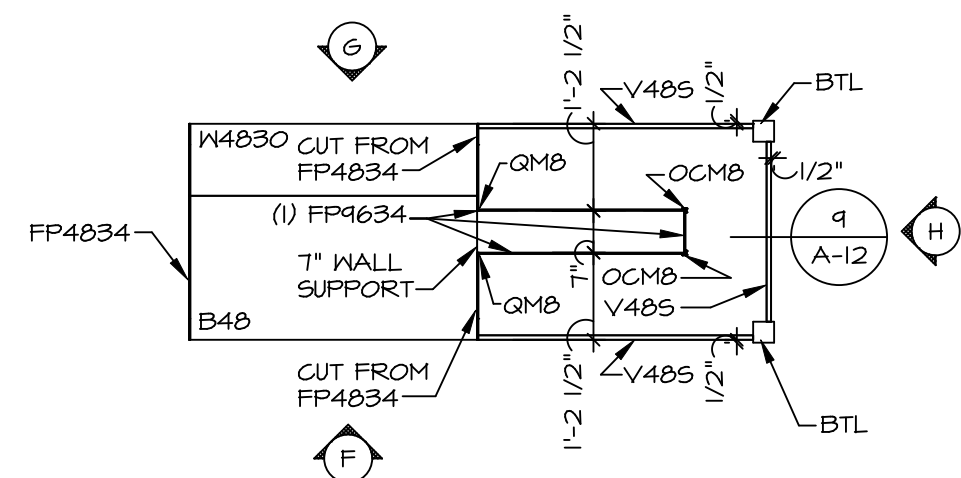
**KITCHEN CABINET
PLAN-KC-3063**

3
A-12 SCALE: 3/8" = 1'-0" UPGRADE KITCHEN MORNING ROOM



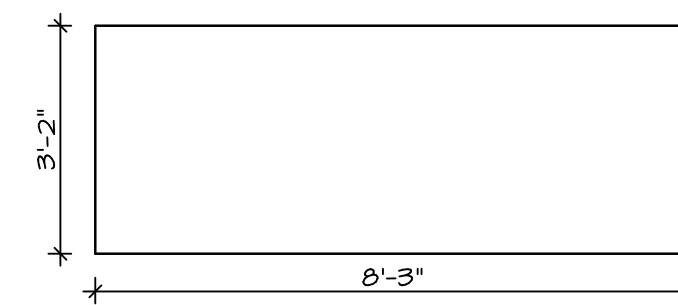
**KITCHEN COUNTERTOP
PLAN-KT-3063**

4
A-12 SCALE: 3/8" = 1'-0" UPGRADE KITCHEN MORNING ROOM



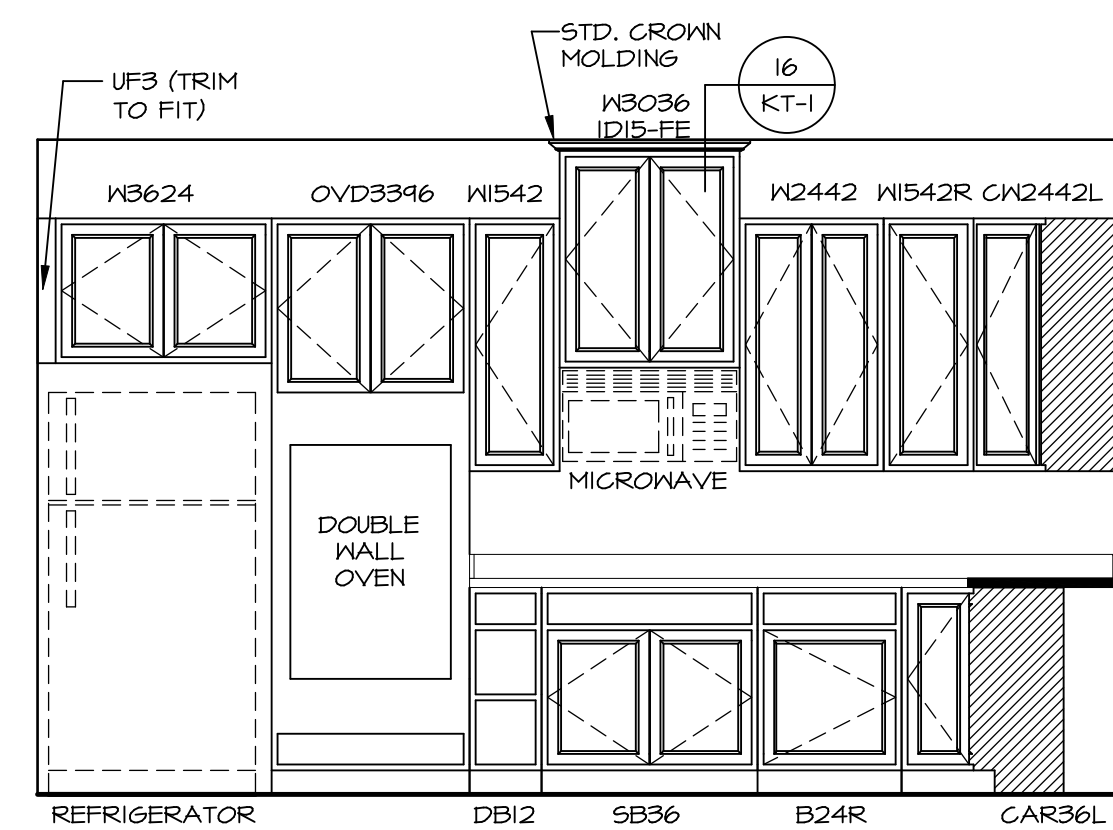
**KITCHEN CABINET
PLAN-KC-3214**

7
A-12 SCALE: 3/8" = 1'-0" GOURMET ISLAND

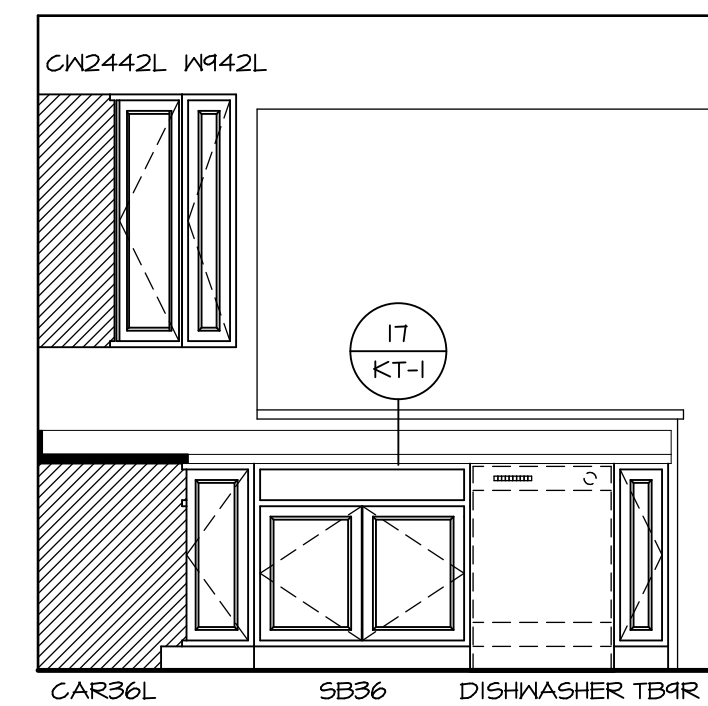


**KITCHEN COUNTERTOP
PLAN-KT-3214**

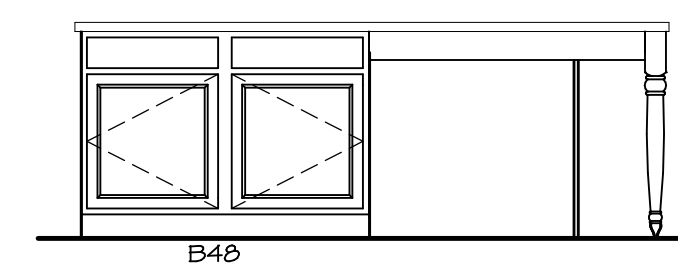
8
A-12 SCALE: 3/8" = 1'-0" GOURMET ISLAND



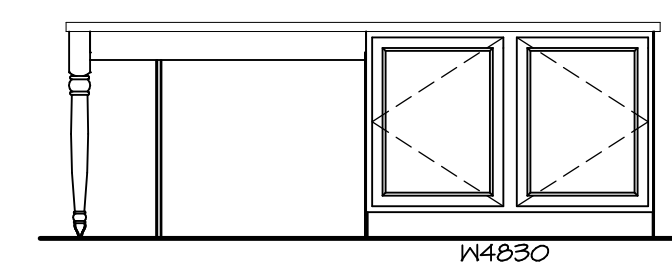
D KITCHEN ELEVATION
SCALE: 3/8" = 1'-0"



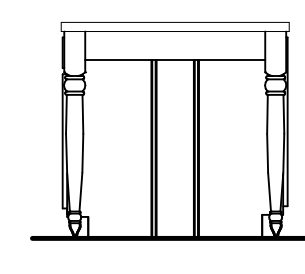
C KITCHEN ELEVATION
SCALE: 3/8" = 1'-0"



F KITCHEN ELEVATION
SCALE: 3/8" = 1'-0"



G KITCHEN ELEVATION
SCALE: 3/8" = 1'-0"



H KITCHEN ELEVATION
SCALE: 3/8" = 1'-0"

SET NO. PALOO
VERSION 03
DRAWN BY
DATE:
OPTION

MODEL
PALERMO
DRAWING TITLE
OPTION DESCRIPTION

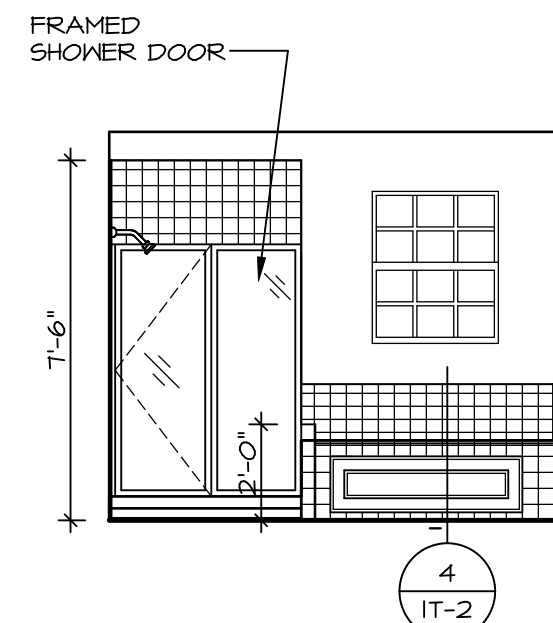
SHEET NO.
A-12
70

REV. NO. DATE

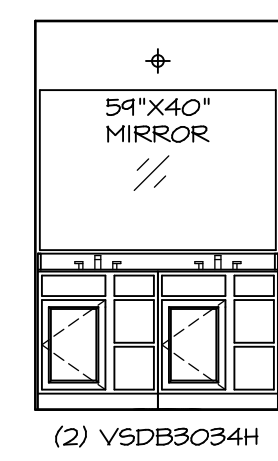
REMARKS

NVR, Inc. expressly reserves the right to modify the contents of these plans without notice. These plans are not to be reproduced, changed or altered in any way without the written consent of NVR, Inc.

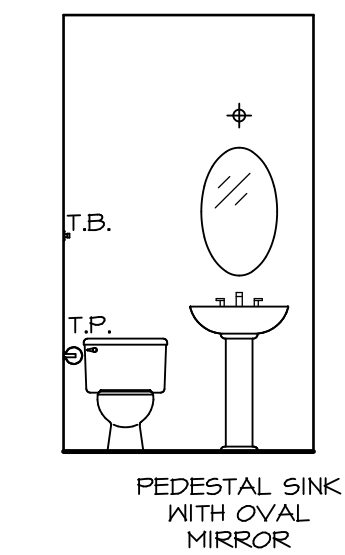
NVR
NVR, Inc. Suite 100
5285 Walkers Lane
Fredericks, MD 21703



M OWNER'S BATH
SCALE: 1/4" = 1'-0"



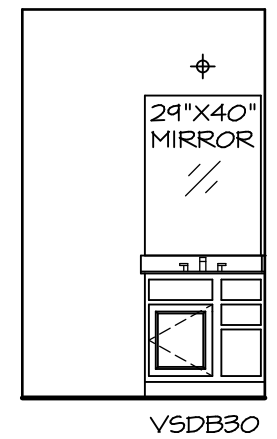
J OWNER'S BATH
SCALE: 1/4" = 1'-0"



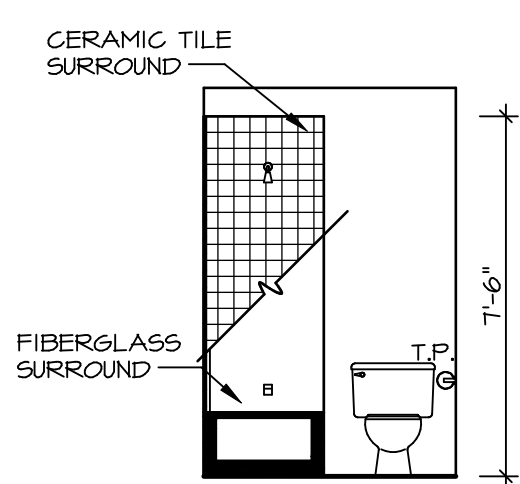
B POWDER ROOM
SCALE: 1/4" = 1'-0"



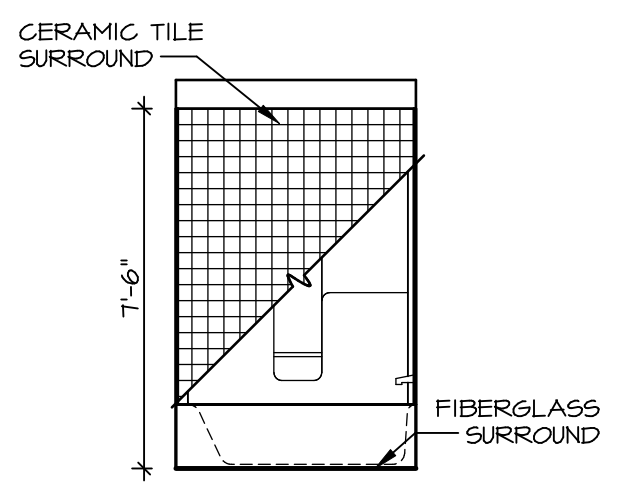
H OWNER'S BATH
SCALE: 1/4" = 1'-0"



E BATH #1
SCALE: 1/4" = 1'-0"



G BATH #1
SCALE: 1/4" = 1'-0"



F BATH #1
SCALE: 1/4" = 1'-0"

NOTES:

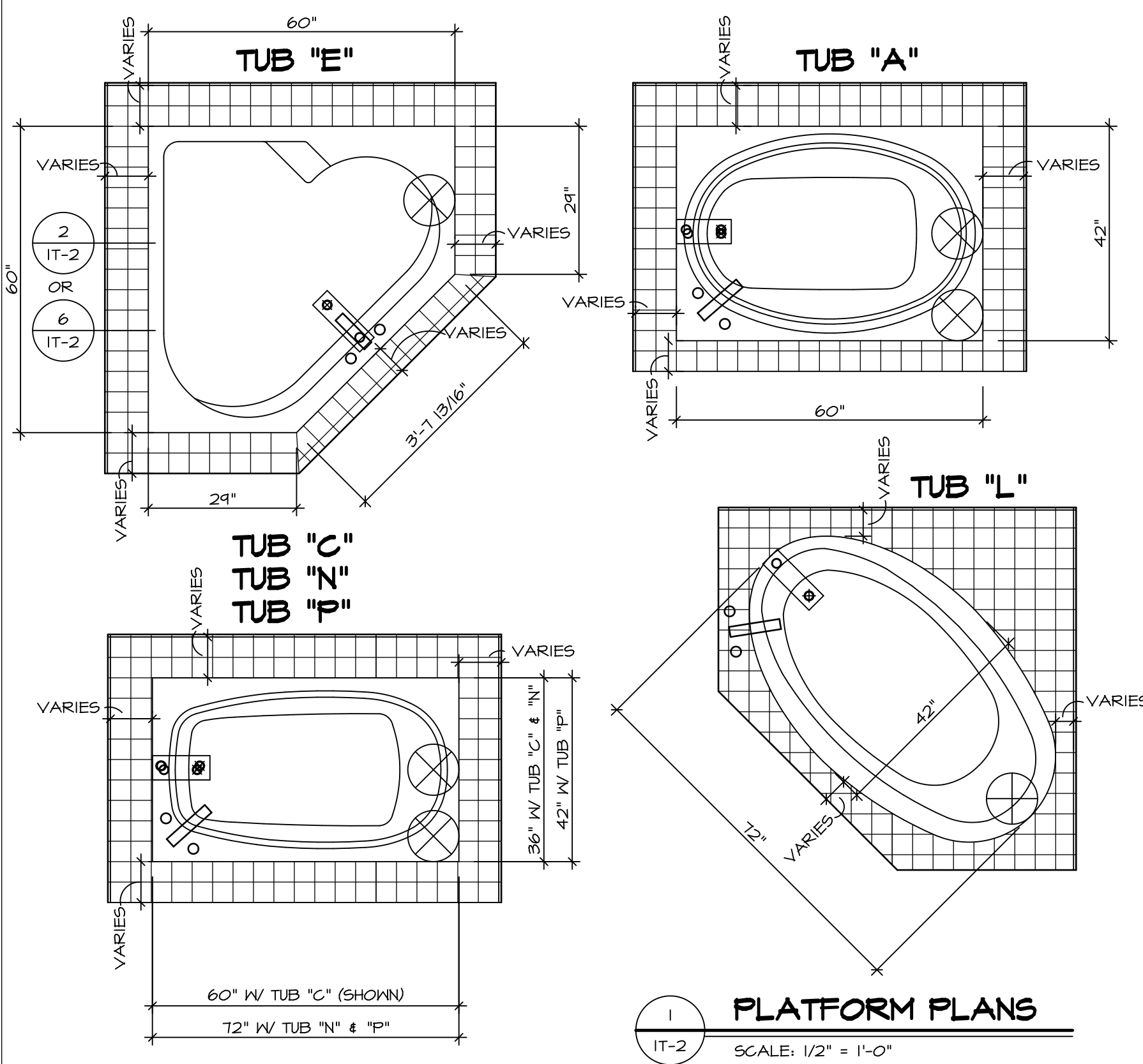
1. TEMPERED GLASS SHOWER ENCLOSURE WITH SWING DOOR OR OPTIONAL SLIDING DOOR BY DIVISION
2. TUB ACCESS PANELS PROVIDED AS NEEDED, ALL MATERIALS BY DIVISION
3. REFER TO SHEET IT-2 FOR TUB AND SHOWER DETAILS.
4. ALL V5DB24-42 DRAWERS TO BE SET ON RIGHT HAND.
5. BATH ELEVATIONS ARE SHOWN PER PLAN.

| | | |
|---|-------------------------|------------------|
| SHEET NO. A-13 | MODEL PALERMO | SET NO. PALOO |
| DRAWING TITLE BATH ELEVATIONS | VERSION 03 | DRAWN BY |
| OPTION DESCRIPTION | DATE: | OPTION |
| 72 | | |

NVR
NVR, Inc. Suite 100
5285 Washburne Rd.
Frederick, MD 21703

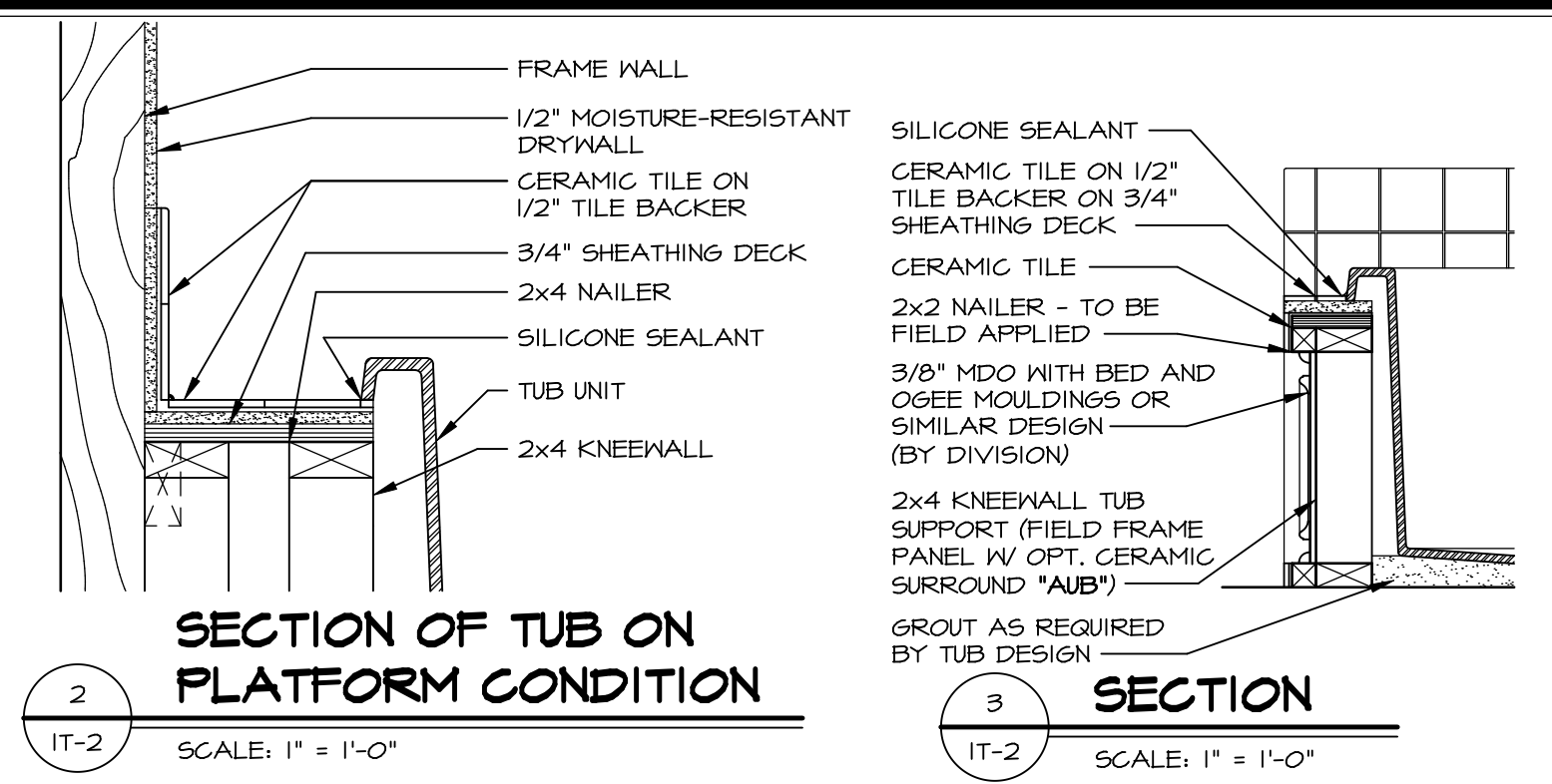
© NVR, Inc. expressly reserves the right to modify or change these plans without notice. These plans are not to be reproduced, changed or altered in any way without the written consent of NVR, Inc.

| REV. NO. | DATE | REMARKS |
|----------|----------|-------------------------|
| 1 | 08/04/16 | TM - DRAINING ALIGNMENT |

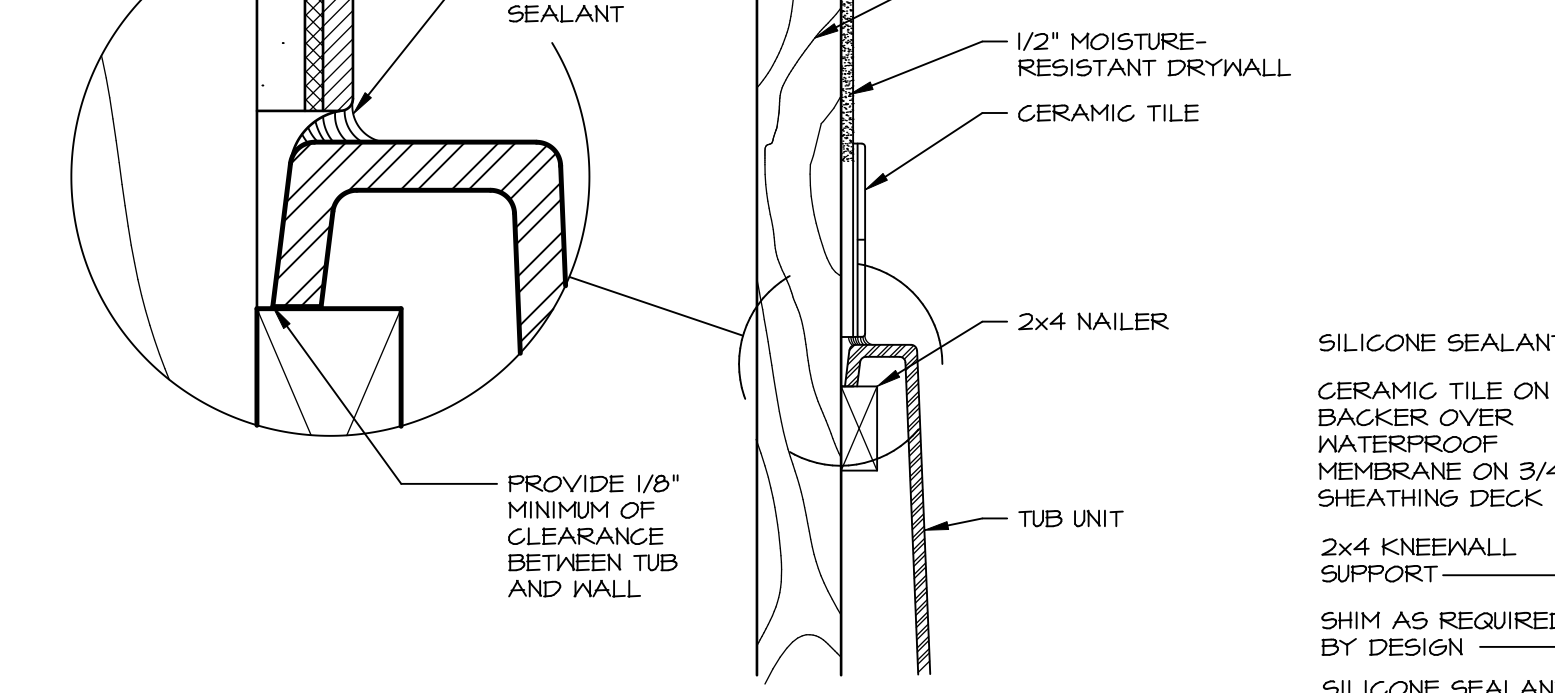


1 PLATFORM PLANS
SCALE: 1/2" = 1'-0"

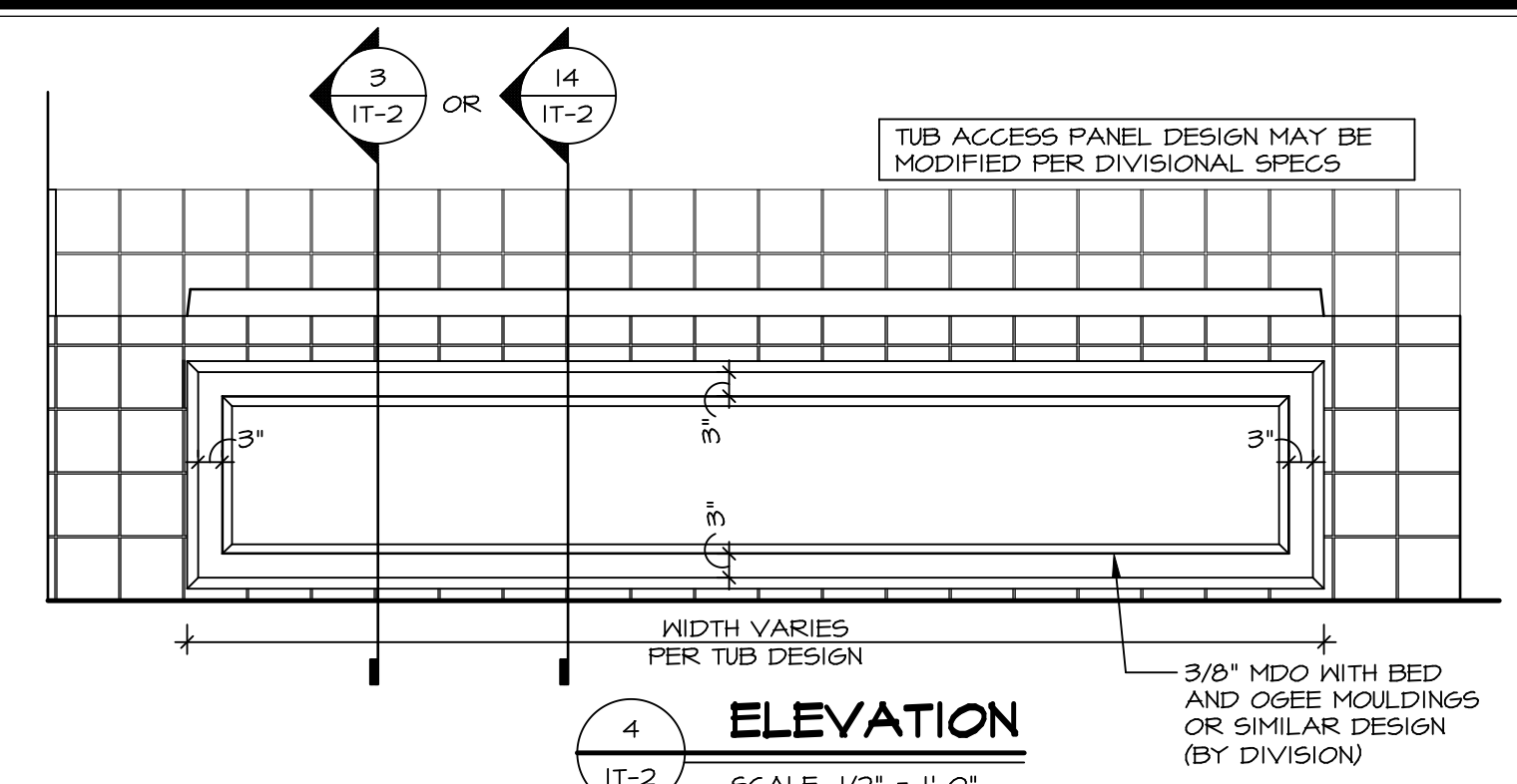
| TUB | MANUF. | HEIGHT | WIDTH | LENGTH | TUB DECK PANEL HEIGHT |
|-----|------------------|---------|-------|--------|-----------------------|
| "A" | KOHLER/ STERLING | 18 3/4" | 42" | 60" | 17 1/8" |
| "C" | KOHLER/ STERLING | 18 3/4" | 36" | 60" | 17 1/8" |
| "E" | KOHLER/ STERLING | 19 1/2" | 60" | 60" | 17 7/8" |
| "L" | KOHLER/ STERLING | 18 1/2" | 42" | 72" | 16 7/8" |
| "N" | KOHLER/ STERLING | 18 3/4" | 36" | 72" | 17 1/8" |
| "P" | KOHLER/ STERLING | 18 3/4" | 42" | 72" | 17 1/8" |



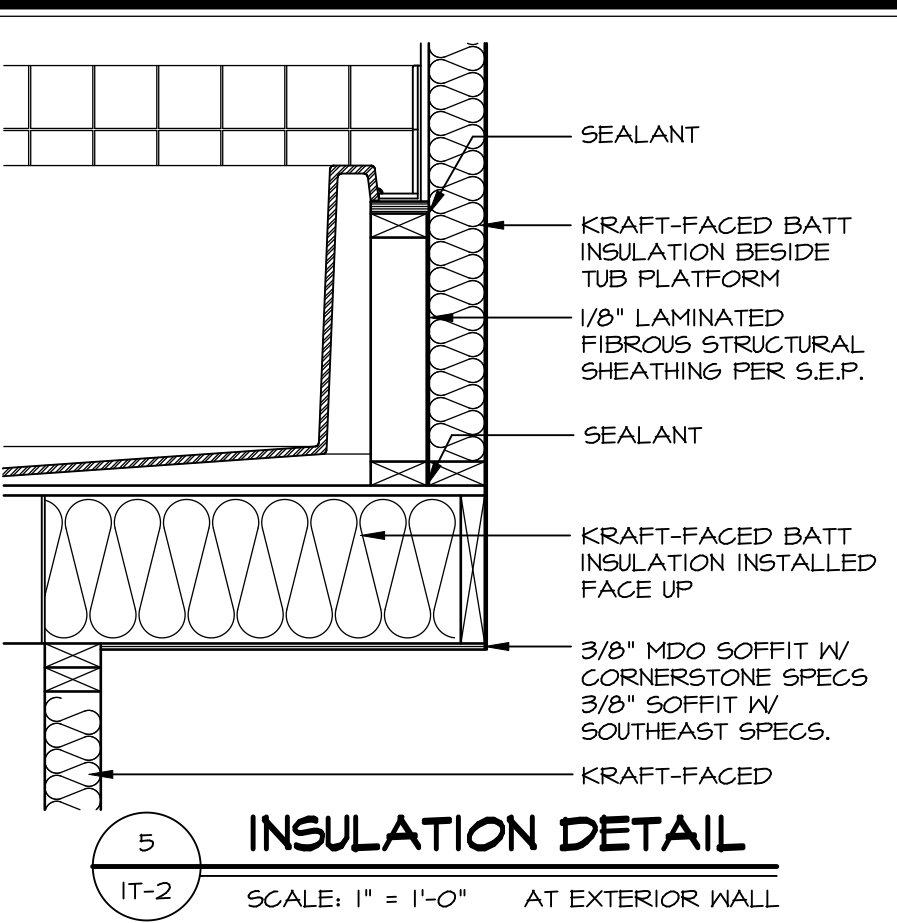
2 SECTION OF TUB ON PLATFORM CONDITION
SCALE: 1" = 1'-0"



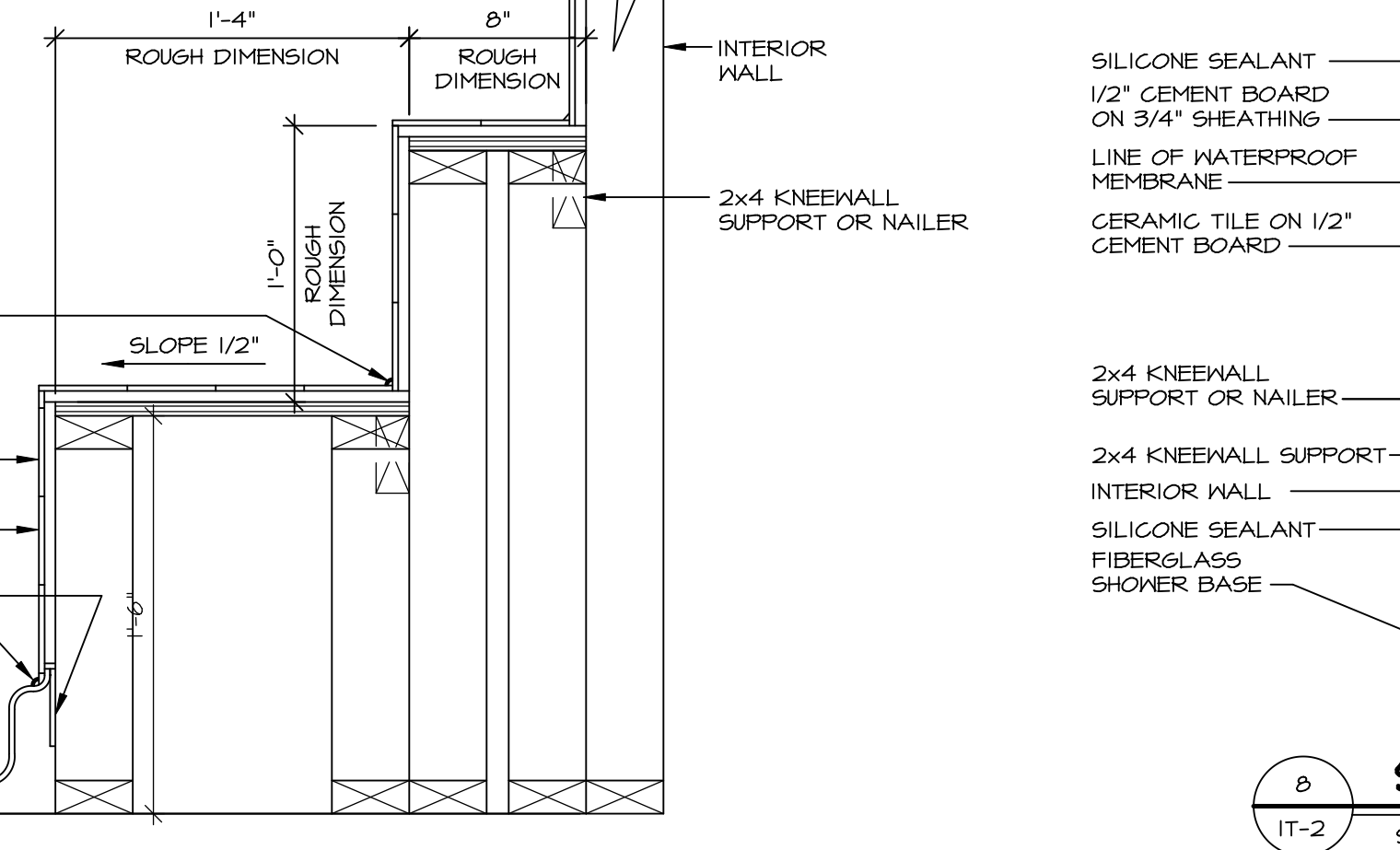
3 SECTION OF TUB TO WALL CONDITION
SCALE: 1" = 1'-0"



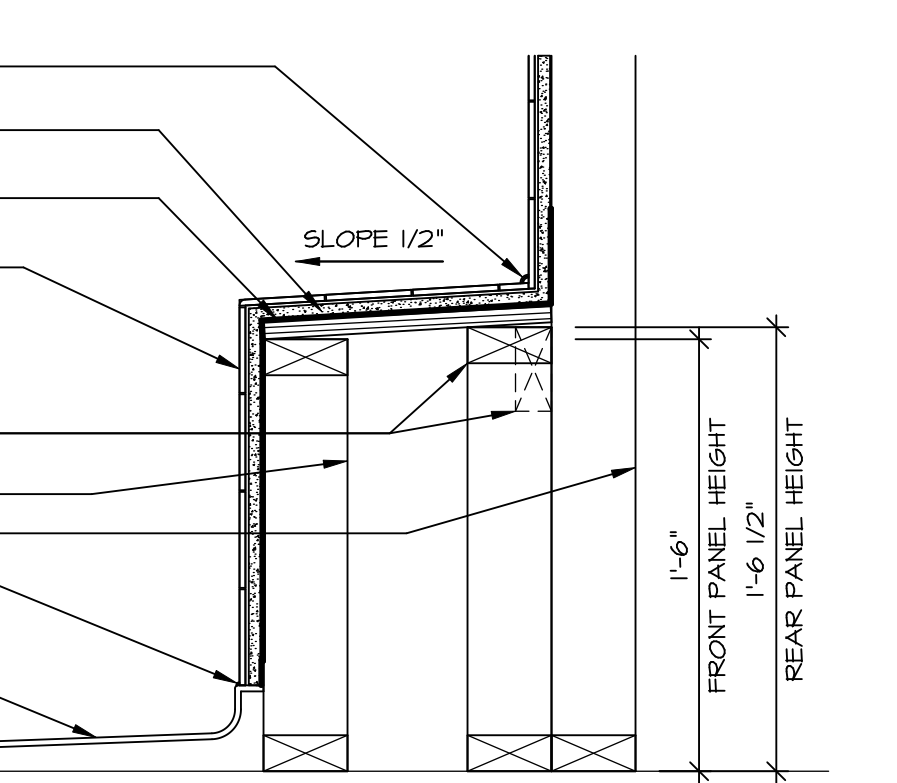
4 ELEVATION
SCALE: 1/2" = 1'-0"



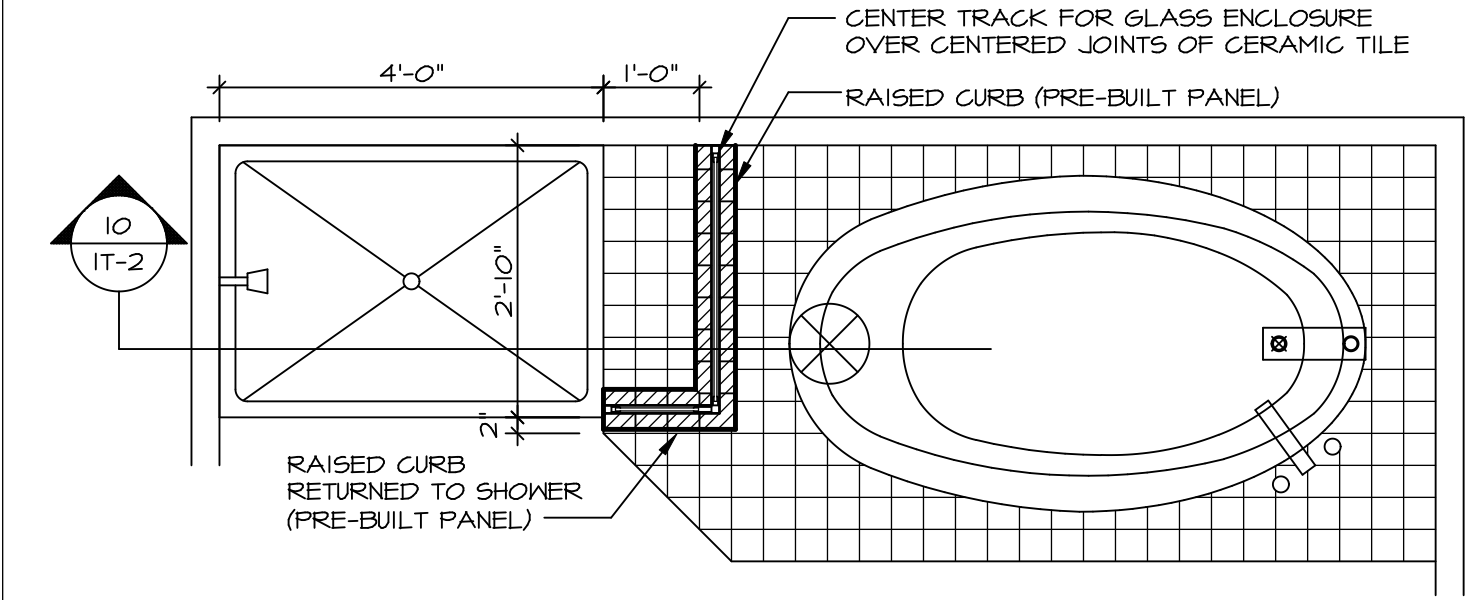
5 INSULATION DETAIL
SCALE: 1" = 1'-0" AT EXTERIOR WALL



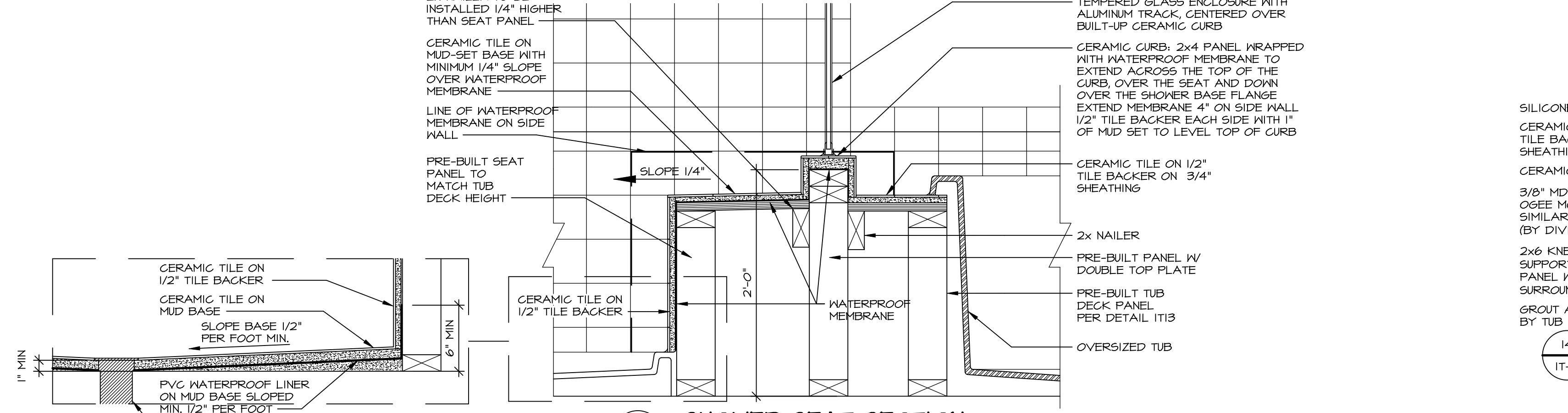
7 SECTION OF SHOWER SEAT AND SHELF
SCALE: 1/2" = 1'-0"



8 SECTION OF SHOWER SEAT
SCALE: 1-1/2" = 1'-0" FIBERGLASS SHOWER BASE



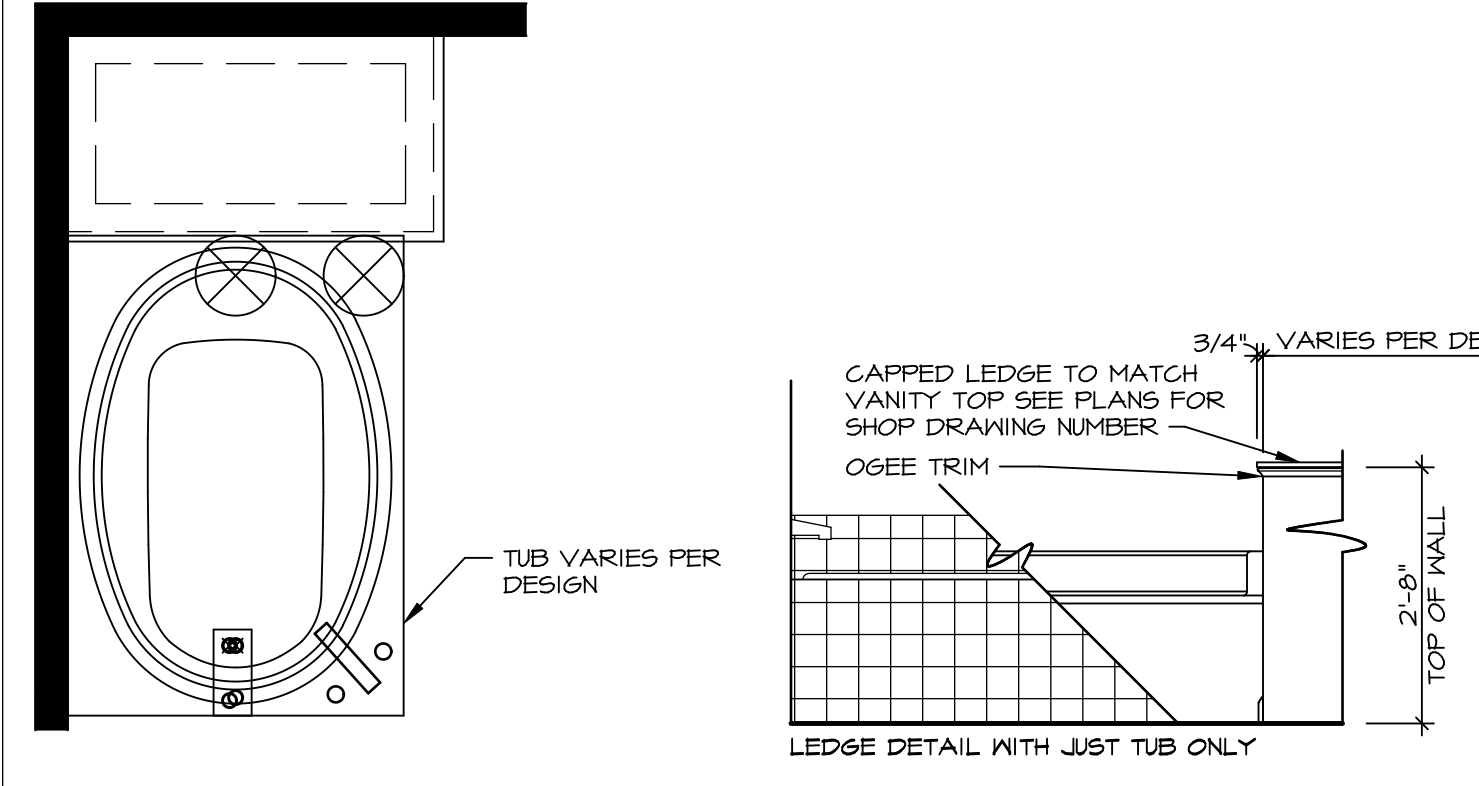
9 SHOWER SEAT PLAN / DETAIL
SCALE: 1/2" = 1'-0"



10 SHOWER SEAT SECTION
SCALE: 1-1/2" = 1'-0"



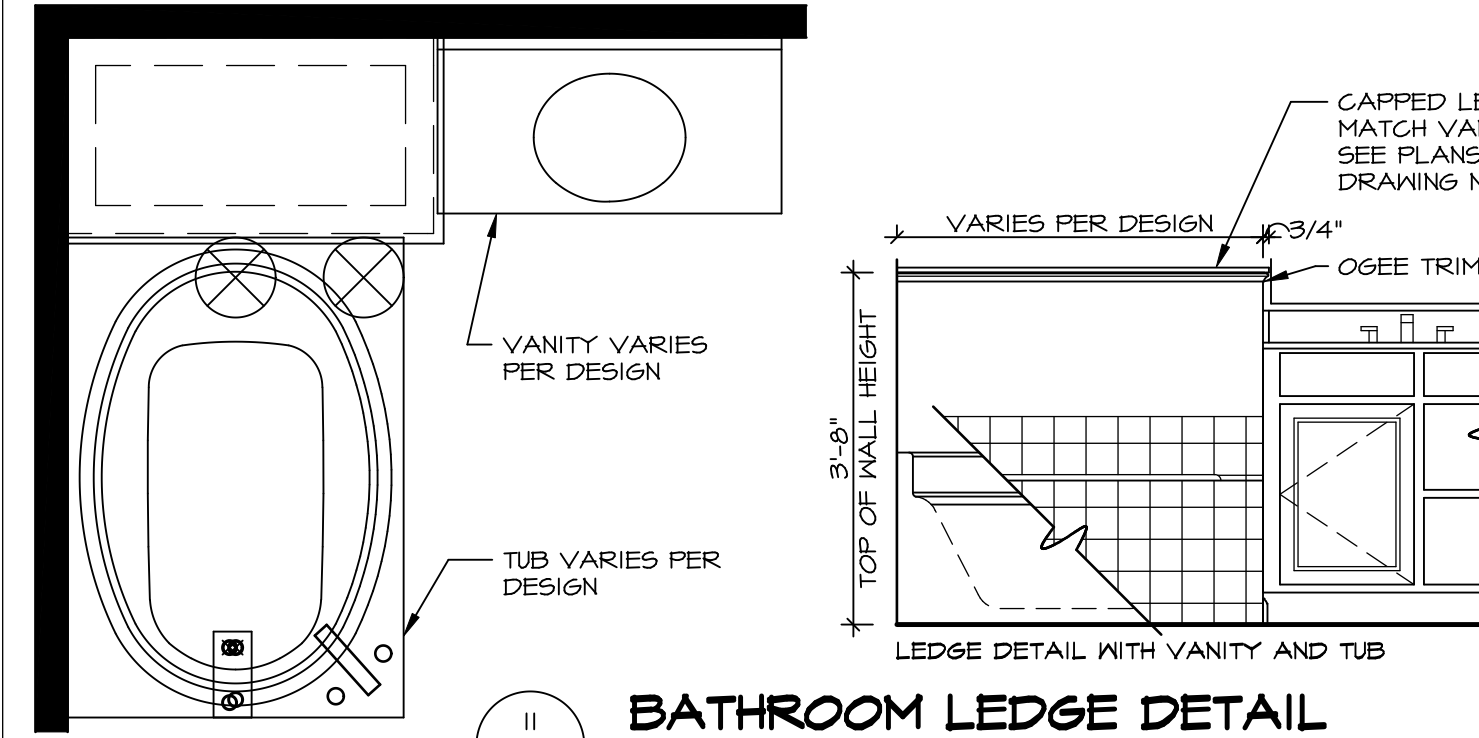
11 ALTERNATE SHOWER PAN DETAIL
SCALE: 1" = 1'-0"



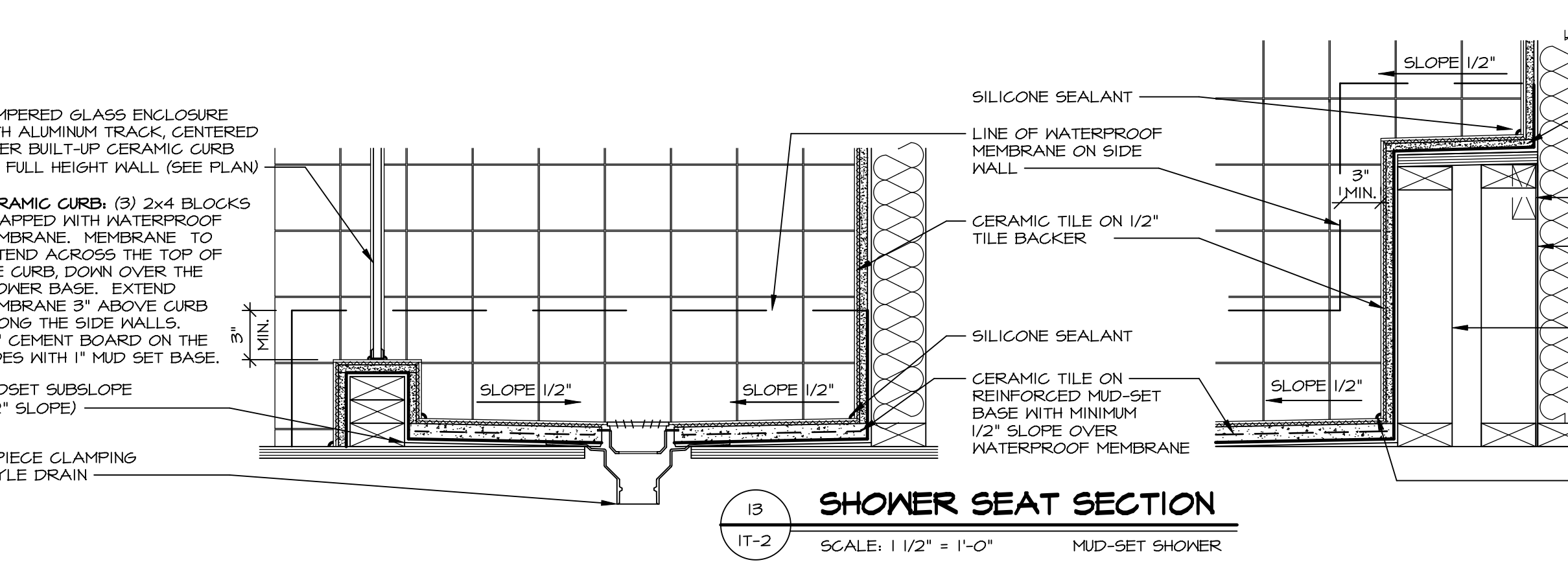
12 BATHROOM LEDGE DETAIL
SCALE: 1/2" = 1'-0"



13 SILL DETAIL
SCALE: 1" = 1'-0"



14 BATHROOM LEDGE DETAIL
SCALE: 1/2" = 1'-0"

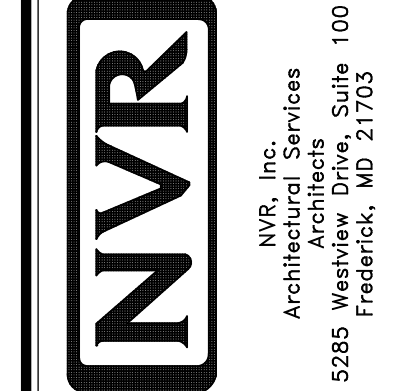


13 SHOWER SEAT SECTION
SCALE: 1 1/2" = 1'-0" MUD-SET SHOWER

REVISIONS

| REV. NO. | DATE | DESCRIPTION |
|----------|---------|---|
| 1 | 5/11/17 | EBP - REVISED DETAIL 1 AND 11 TO REMOVE TUB ACCESS PANEL REF. (095 #15 3/4" x 1/2") |
| 2 | 9/21/17 | EBP - REVISED T-FLY NOTE TO CALL OUT LFS |
| 3 | 9/21/17 | EBP - REVISED NOTE ON DETAIL #1 - REVISED ORDER OF MATERIAL PAR#49304 |
| 4 | 8/28/18 | EBP - DTL 8 / 19 ME REMOVED THE 2x6 BULKING AT BASE OF SHWR REQUEST #4663 |

NVR, Inc., owner, expressly reserves its common law copyright and other property rights in these plans. These plans are not to be reproduced, stored in a retrieval system, or transmitted in any form or by any means, electronic, mechanical, photocopying, recording, or by any information storage and retrieval system, without first obtaining the expressed written consent of NVR, Inc.



| MODEL | SET NO. | VERSION | DRAWN BY | DATE: | OPTION |
|-----------------------|---------|---------|----------|-------|--------|
| STANDARD DETAILS | NVR | | | | |
| INTERIOR TRIM DETAILS | | | | | |
| BATH DETAILS | | | | | |
| OPTION DESCRIPTION | | | | | |

SHEET NO. **IT-2**