

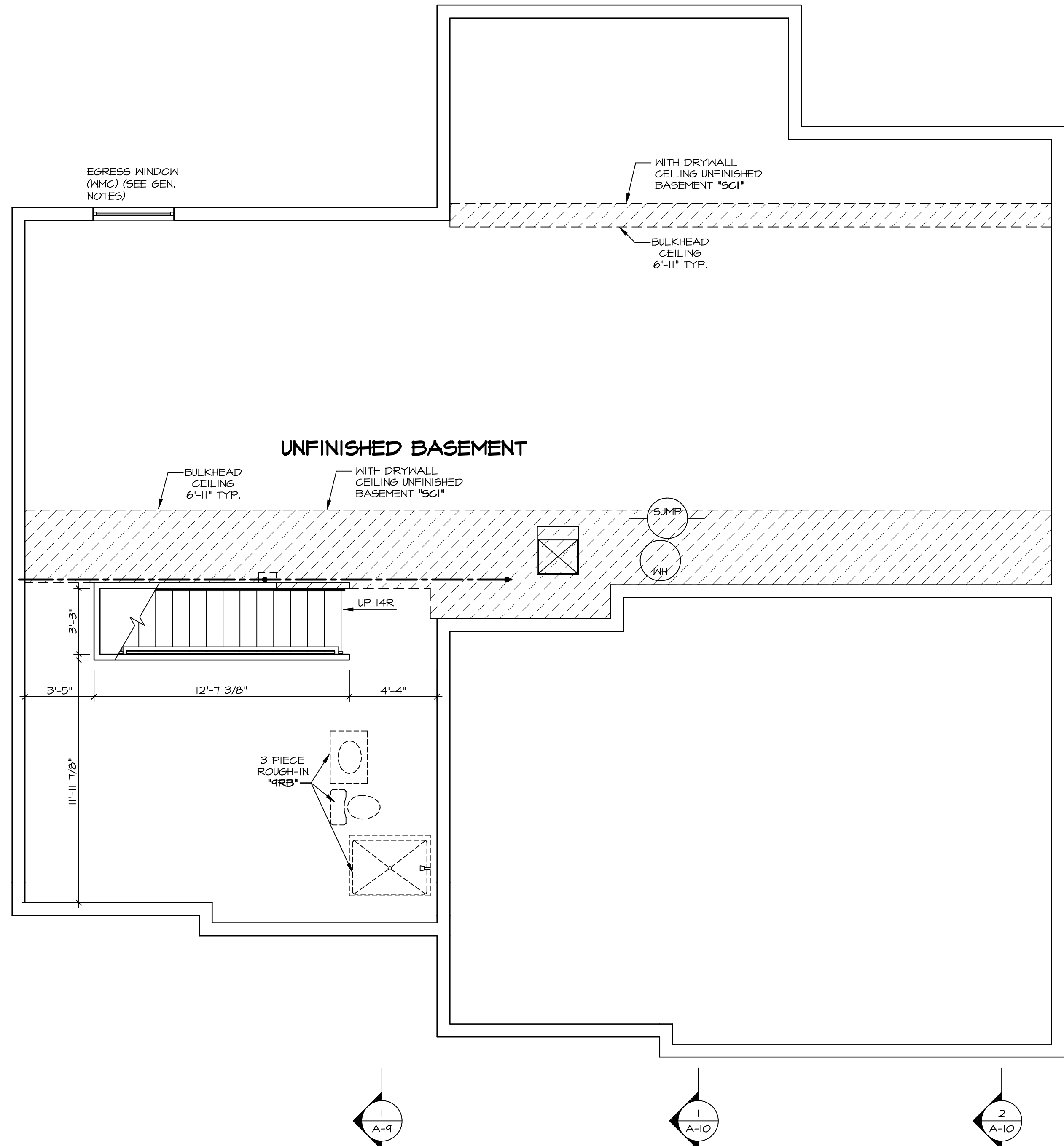
1
A-5 PLUMBING PLAN
SCALE: 1/4" = 1'-0"

SHEET NO. A-5	MODEL LONDON	SET NO. LDN00	VERSION 02
	DRAWING TITLE PLUMBING PLAN	DRAWN BY PTH	DATE: 8/13/15
	OPTION DESCRIPTION	OPTION	
33			

NVR
NVR, Inc. Suite 100
5285 Westfield, MD 21703

© NVR, Inc. expressly reserves the right to modify or amend these plans at any time without notice. These plans are not to be reproduced, changed or altered in any way without the written consent of NVR, Inc.

DIV-COMM-LOT-UNIT DCY-CH-S544	
COMM-LOT	CARRIAGE TRAILS - S544
STREET ADDRESS	4100 LAKESIDE STREET
CITY	TIPP CITY
STATE	OH
ZIP	45371
APT. NO.	----



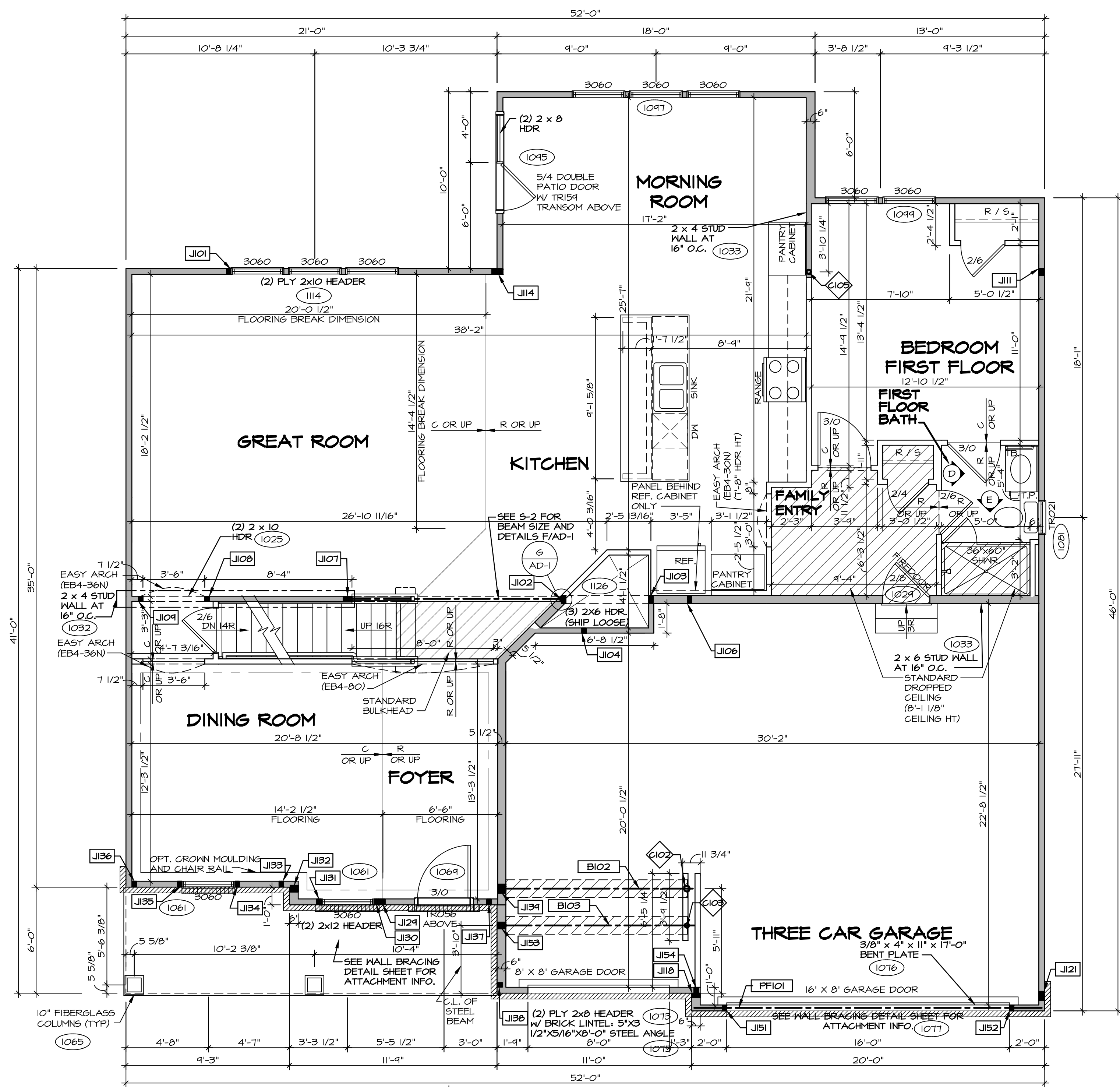
BASEMENT FLOOR PLAN
SCALE: 1/4" = 1'-0"

LEGEND	
	BEARING WALL
	NON BEARING WALL
	INDICATES BEARING FROM POINT-LOAD ABOVE
	JACKS
	BEAM/HEADER
	PAD FOOTING
	STEEL COLUMN
	PORTAL FRAME
	JOIST/TRUSS
	LVL
	ENGINEERING PAGE NUMBER
SEE FC DETAILS FOR FRAMING CONNECTORS	

- FLOOR PLAN NOTES**
- ALL HEADERS ARE (2) 2x6 w/ 2x4 WALLS OR (3) 2x6 w/ 2x6 WALLS, UNLESS OTHERWISE NOTED.
 - ALL HEADERS TO HAVE (1) 2x4 OR 2x6 JACK EACH END, UNLESS OTHERWISE NOTED.
 - ALL EXTERIOR WALLS TO BE 4" AND ALL INTERIOR WALLS TO BE 3 1/2", UNLESS OTHERWISE NOTED.
 - HATCHED AREAS INDICATE DROPPED CEILINGS. ALL DROPPED CEILINGS ARE 12" UNLESS OTHERWISE NOTED.
 - SEE "BRACED WALL PANEL DETAIL SHEET" FOR SPECIAL WALL FRAMING LOCATIONS AND HEADER SIZES, IF APPLICABLE.
 - SEE STANDARD DETAIL CATEGORY "IT" SHEET(S) FOR INTERIOR TRIM DETAILS.
 - SEE ARCHITECTURAL DETAIL SHEET "AD" FOR HOUSE SPECIFIC INTERIOR TRIM OPTION TABLE.
 - ALL WINDOWS HAVE "1'-0 1/2" HEADER HEIGHT UNLESS OTHERWISE NOTED.

- GYPSUM NOTES**
- AT GARAGE:
GYPSUM BOARD AT COMMON WALLS, CEILINGS, BEAM WRAPS AND SUPPORTS PER STANDARD DETAIL FA-1(b) FIRE ASSEMBLIES OR AS REQUIRED BY LOCAL CODE.
- AT STAIRS:
1/2" GYPSUM BOARD AT UNDERSIDE OF STAIRS AND WALLS IN CLOSET
- BASEMENT WITH I-JOIST FLOOR SYSTEM ABOVE:
WITH OPTION "SCI" - DRYWALL UNFINISHED BASEMENT CEILING AREA
- NOTES:**
- 1/2" GYPSUM WALL BOARD REQUIRED ON CEILING IN UNFINISHED AREAS WHEN NO SPRINKLER SYSTEM IS INSTALLED.
 - A MAXIMUM AREA OF 80 SQ FT MAY BE OMITTED AS NEEDED FOR INSTALLATION OF PLUMBING, ELECTRICAL, AND/OR HVAC (TYPICALLY AN 8'-0"x8'-0" CEILING SPACE ABOVE MECHANICAL AREA).
 - PROVIDE FIRE BLOCKING AS REQUIRED AT PERIMETER OF ANY AREAS WHERE DRYWALL HAS BEEN OMITTED.

SHEET NO. A-6	MODEL LONDON	SET NO. LDN00	VERSION 02	DRAWN BY HD	DATE: 8/13/15	OPTION
		DRAWING TITLE BASEMENT FLOOR PLAN				
OPTION DESCRIPTION		37				
DIV-COMM-LOT-UNIT DCY-CH-S544		COMM-LOT CARRIAGE TRAILS - S544				
STREET ADDRESS 8180 LAKESIDE STREET		CITY TIPP CITY		STATE OH		ZIP 45371
APT. NO. -----		A-6				
<p><small>© NVR, Inc. expressly reserves the right to modify these plans without notice. These plans are not to be reproduced, changed or altered in any way without the written consent of NVR, Inc.</small></p> <p>NVR NVR, Inc. Suite 100 Fredericks, MD 21703</p>						
<p>C:\NVR\Solves\LONDON_LDNO0_02\DCY-CH-S544\1768509\Sheets\Lot_Specs\A-6_BSM1_LS.dwg 04/02/20 - 3:52 am</p>						



FIRST FLOOR PLAN
SCALE: 1/4" = 1'-0"

FLOOR PLAN NOTES

1. ALL HEADERS ARE (2) 2x6 w/ 2x4 WALLS OR (3) 2x6 w/ 2x6 WALLS, UNLESS OTHERWISE NOTED.
2. ALL HEADERS TO HAVE (1) 2x4 OR 2x6 JACK EACH END, UNLESS OTHERWISE NOTED.
3. ALL EXTERIOR WALLS TO BE 4" AND ALL INTERIOR WALLS TO BE 3 1/2", UNLESS OTHERWISE NOTED.
4. HATCHED AREAS INDICATE DROPPED CEILINGS. ALL DROPPED CEILINGS ARE 12" UNLESS OTHERWISE NOTED.
5. SEE "BRACED WALL PANEL DETAIL SHEET" FOR SPECIAL WALL FRAMING LOCATIONS AND HEADER SIZES, IF APPLICABLE.
6. SEE STANDARD DETAIL CATEGORY "IT" SHEET(S) FOR INTERIOR TRIM DETAILS.
7. SEE ARCHITECTURAL DETAIL SHEET "AD" FOR HOUSE SPECIFIC INTERIOR TRIM OPTION TABLE.
8. ALL WINDOWS HAVE 8'-0 1/2" HEADER HEIGHT UNLESS OTHERWISE NOTED.

GYPSUM NOTES

- AT GARAGE:**
GYPSUM BOARD AT COMMON WALLS, CEILINGS, BEAM WRAPS AND SUPPORTS PER STANDARD DETAIL FA-1(b) FIRE ASSEMBLIES OR AS REQUIRED BY LOCAL CODE.
- AT STAIRS:**
1/2" GYPSUM BOARD AT UNDERSIDE OF STAIRS AND WALLS IN CLOSET

LEGEND

- BEARING WALL
 - NON BEARING WALL
 - INDICATES BEARING FROM POINT-LOAD ABOVE
 - JACKS
 - BEAM/HEADER
 - PAD FOOTING
 - STEEL COLUMN
 - PORTAL FRAME
 - JOIST/TRUSS
 - LVL
 - ENGINEERING PAGE NUMBER
- SEE FC DETAILS FOR FRAMING CONNECTORS

FIRST FLOOR JACK SCHEDULE

IDENTIFIER	DESCRIPTION	OPTIONS	ENG. NUM.	REMARKS
J101	JACK - (2) 2X4 SPF STUD GRADE		1114	
J102	JACK - (2) 2X6 SPF STUD GRADE		1121	
J103	JACK - (2) 2X6 SPF STUD GRADE		1121	
J104	JACK - (2) 2X4 SPF STUD GRADE		1006	
J106	JACK - (2) 2X6 SPF STUD GRADE		1034, 1041	
J107	JACK - (4) 2X4 SPF STUD GRADE		1027	
J108	JACK - (2) 2X4 SPF STUD GRADE		1025	
J109	JACK - (2) 2X4 SPF STUD GRADE		1025	
J111	JACK - (3) 2X4 SPF STUD GRADE	BAR	1012, 1015, 1021	
J114	JACK - (5) 2X4 SPF	MAA	1018, 1021	
J118	JACK - (2) 2X6 SPF STUD GRADE	ZSU	1031a	
J121	JACK - (4) 2X4 SPF	ZSU	1031a	EXTEND TO THRU, TOP PLATE
J124	JACK - (3) 2X4 SPF STUD GRADE	ELC	1010	
J130	JACK - (2) 2X4 SPF STUD GRADE	ELC	1061	
J131	JACK - (2) 2X4 SPF STUD GRADE	ELC	1061	
J132	JACK - (3) 2X6 SPF STUD GRADE	ELC	2000	
J133	JACK - (2) 2X4 SPF STUD GRADE	ELC, EVM	1065	
J134	JACK - (2) 2X4 SPF STUD GRADE	ELC	1061	
J135	JACK - (2) 2X4 SPF STUD GRADE	ELC	1061	
J136	JACK - (2) 2X4 SPF STUD GRADE	ELC	1065	
J137	JACK - (2) 2X4 SPF STUD GRADE	ELC, EVM	1065	
J138	JACK - (2) 2X4 SPF STUD GRADE	ELC	1065	
J139	JACK - (4) 2X6 SPF STUD GRADE	ELC, ELL	1046	
J151	JACK - (2) 2X4 SPF STUD GRADE		1077	
J152	JACK - (2) 2X4 SPF STUD GRADE		1077	
J153	JACK - (3) 2X6 SPF STUD GRADE		1044	
J154	JACK - (2) 2X4 SPF STUD GRADE	ZSU	1031b	

FIELD INSTALLED FIRST FLOOR BEAM/HEADER SCHEDULE

IDENTIFIER	DESCRIPTION	LENGTH	OPTIONS	ENG. NUM.	REMARKS
B102	BEAM STEEL - W8X13	10'-11"	ELC, ELL	1046, 1048, 1050	
B103	BEAM STEEL - W8X10 WP	10'-11"	EVM	1044	3/8"X8" PLATE
PFI01	EXT HEADER - 2X12 - 2 PLY	14'-8"		1077	

STEEL COLUMN SCHEDULE

IDENTIFIER	STYLE	HEIGHT	OPTIONS	ENG. NUM.	REMARKS
C102	STANCHION - 4 IN DIA I16A ADJ	9'-7 1/4"	FBA	1036	
C103	STANCHION - 3 IN DIA I16A ADJ	9'-7"	ELC, EVM, FBA	1044	
C105	STANCHION - 3 IN SCHED 40	9'-1 1/8"	MAA, KAF, BAR	1021	

DCY-CH-S544
COMMITTEE
CARRIAGE TRAILS - S544
STREET ADDRESS
4190 LAKESIDE STREET
CITY
STATE OH
ZIP 43971

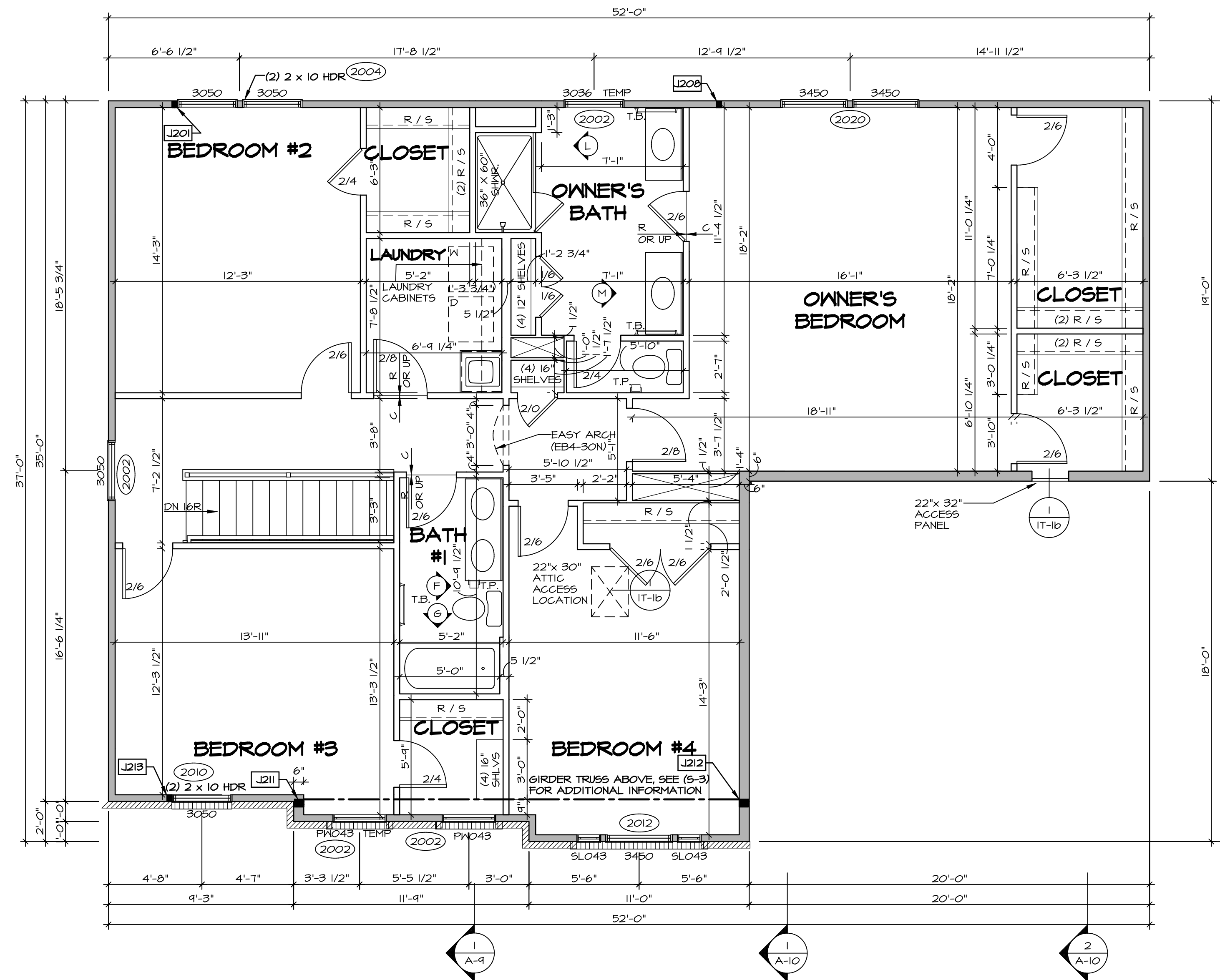
NVR, Inc. expressly reserves the right to modify these plans without notice. These plans are not to be reproduced, changed or altered in any way without the written consent of NVR, Inc.

NVR
NVR, Inc. Suite 100
5285 Washington Blvd.
Fredericks, MD 21703

SET NO. LDN00
VERSION 02
DRAWN BY TVT
DATE: 8/12/15
OPTION

MODEL
LANDON
DRAWING TITLE
FIRST FLOOR PLAN
OPTION DESCRIPTION

SHEET NO.
A-7
39



LEGEND

- BEARING WALL
- NON BEARING WALL
- INDICATES BEARING FROM POINT-LOAD ABOVE JACKS
- JACKS
- BEAM/HEADER
- PAD FOOTING
- STEEL COLUMN
- PORTAL FRAME
- JOIST/TRUSS
- LVL
- ENGINEERING PAGE NUMBER

SEE FC DETAILS FOR FRAMING CONNECTORS

- FLOOR PLAN NOTES**
1. ALL HEADERS ARE (2) 2x6 w/ 2x4 WALLS OR (3) 2x6 w/ 2x6 WALLS, UNLESS OTHERWISE NOTED.
 2. ALL HEADERS TO HAVE (1) 2x4 OR 2x6 JACK EACH END, UNLESS OTHERWISE NOTED.
 3. ALL EXTERIOR WALLS TO BE 4" AND ALL INTERIOR WALLS TO BE 3 1/2", UNLESS OTHERWISE NOTED.
 4. HATCHED AREAS INDICATE DROPPED CEILINGS. ALL DROPPED CEILINGS ARE 12" UNLESS OTHERWISE NOTED.
 5. SEE "BRACED WALL PANEL DETAIL SHEET" FOR SPECIAL WALL FRAMING LOCATIONS AND HEADER SIZES, IF APPLICABLE.
 6. SEE STANDARD DETAIL CATEGORY "IT" SHEET(S) FOR INTERIOR TRIM DETAILS.
 7. SEE ARCHITECTURAL DETAIL SHEET "AD" FOR HOUSE SPECIFIC INTERIOR TRIM OPTION TABLE.
 8. ALL WINDOWS HAVE 7'-0 1/2" HEADER HEIGHT UNLESS OTHERWISE NOTED.

- GYPSUM NOTES**
- AT GARAGE:
 GYPSUM BOARD AT COMMON WALLS, CEILINGS, BEAM WRAPS AND SUPPORTS PER STANDARD DETAIL FA-1(b) FIRE ASSEMBLIES OR AS REQUIRED BY LOCAL CODE.
- AT STAIRS:
 1/2" GYPSUM BOARD AT UNDERSIDE OF STAIRS AND WALLS IN CLOSET

SECOND FLOOR JACK SCHEDULE

IDENTIFIER	DESCRIPTION	OPTIONS	ENG. NUM.	REMARKS
J201	JACK - (2) 2X4 SFF STUD GRADE	ELC, ELL	2001a	
J208	JACK - (2) 2X4 SFF STUD GRADE	ELC, ELL, MAA	2000	
J211	JACK - (3) 2X6 SFF STUD GRADE	ELC	2000	EXTEND TO THRU. TOP PLATE
J212	JACK - (3) 2X6 SFF STUD GRADE	ELC	2000	EXTEND TO THRU. TOP PLATE
J213	JACK - (2) 2X4 SFF STUD GRADE	ELC	2010	

SECOND FLOOR PLAN
 SCALE: 1/4" = 1'-0"

SHEET NO. **A-8**

MODEL **LANDON**
 DRAWING TITLE **SECOND FLOOR PLAN**
 OPTION DESCRIPTION

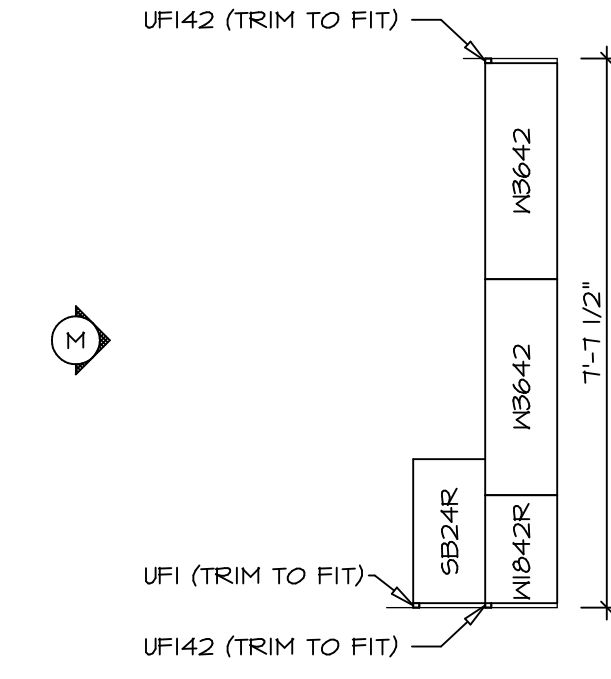
SET NO. **LDN00**
 VERSION **02**
 DRAWN BY **SDTT**
 DATE: **7/3/15**
 OPTION

NVR
 NVR, Inc. Suite 100
 5285 Washington Blvd.
 Frederick, MD 21703

DIV-COMM-LOT-UNIT
DCY-CH-S544
 COMM-LOT
 CARRIAGE TRAILS - S544
 STREET ADDRESS
 8180 LAKESIDE STREET
 CITY
 TIPP CITY
 STATE
 OH
 ZIP
 45371

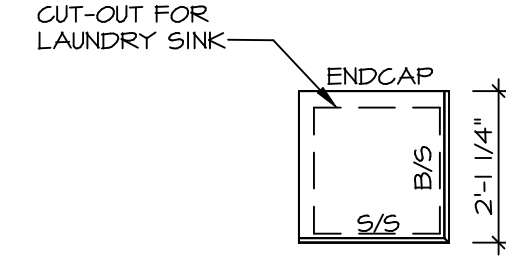
© NVR, Inc. expressly reserves the right to modify these plans without notice. These plans are not to be reproduced, changed or altered in any way without the written consent of NVR, Inc.

C:\NVR\Solves\LANDON_LDNO0_02\DCY-CH-S544\1768509\Sheets\Lot_Spec\Lot_Spec1.dwg 04/02/20 - 3:52 am



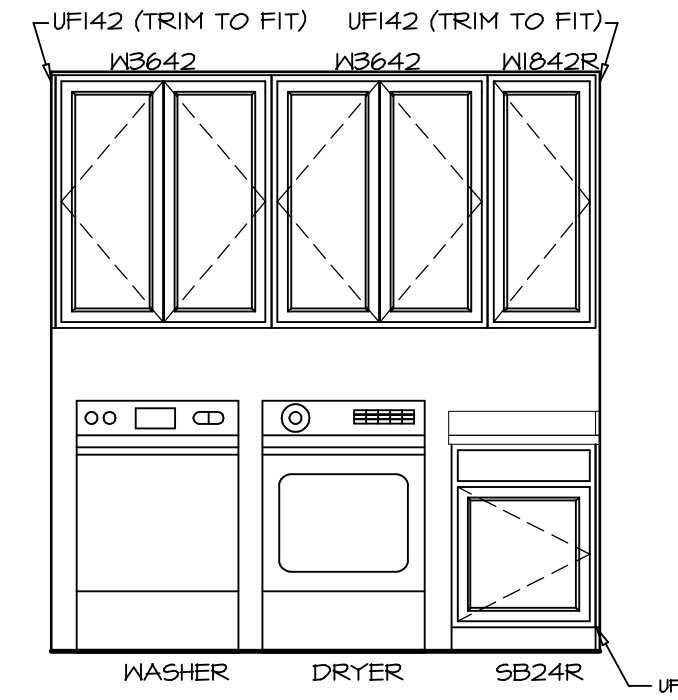
CABINET PLAN
KC - 2964

1
A-12b SCALE: 3/8" = 1'-0"



COUNTERTOP PLAN
KC - 2964

2
A-12b SCALE: 3/8" = 1'-0"

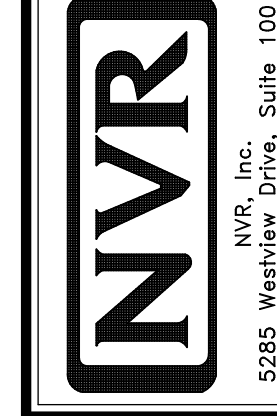


ELEVATION "M"
SCALE: 3/8" = 1'-0"

SHEET NO.
A-12b

MODEL
LANDON

SET NO. LDN00
VERSION 02
DRAWING TITLE
KITCHEN PLAN - ADDITIONAL CABINETS
DRAWN BY SDTT
DATE: 8/6/15
OPTION



© NVR, Inc. expressly reserves the right to modify or discontinue these plans at any time without notice. These plans are not to be reproduced, changed or altered in any way without the written consent of NVR, Inc.

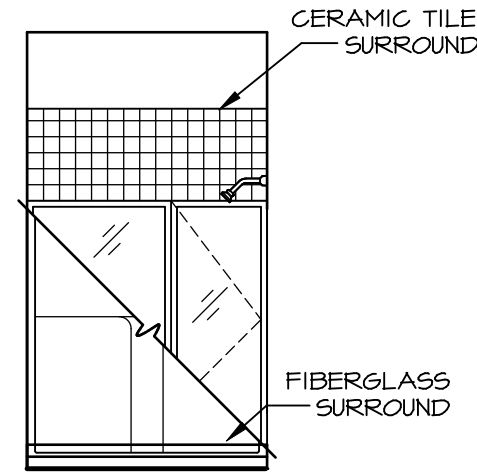
DIV-COMM-LOT-UNIT
DCY-CH-S544

COMM-LOT
CARRIAGE TRAILS - S544

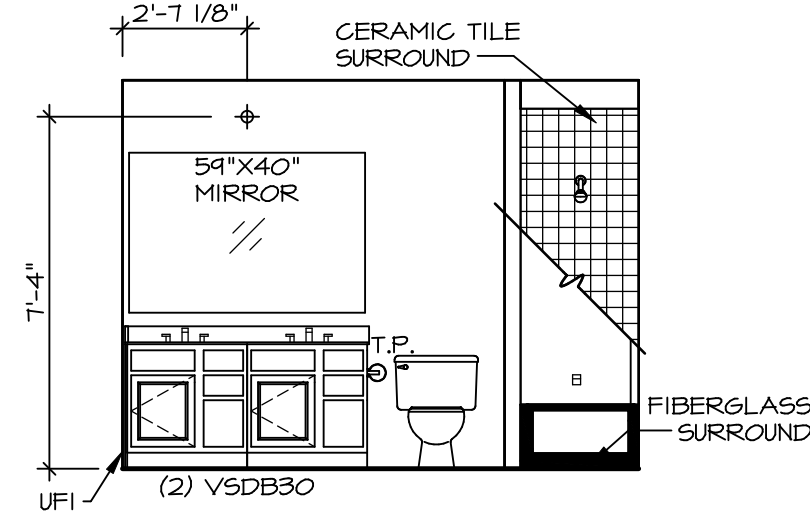
STREET ADDRESS
8180 LAKESIDE STREET

CITY TIPP CITY STATE OH ZIP 45971

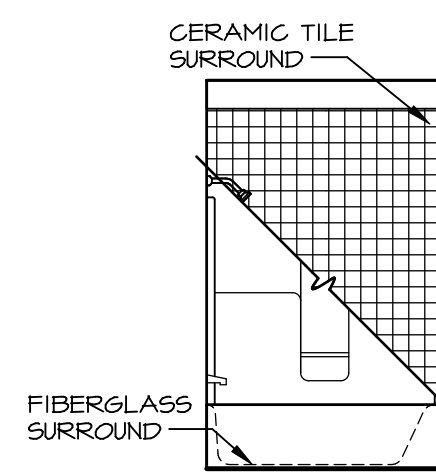
APT. NO. ----



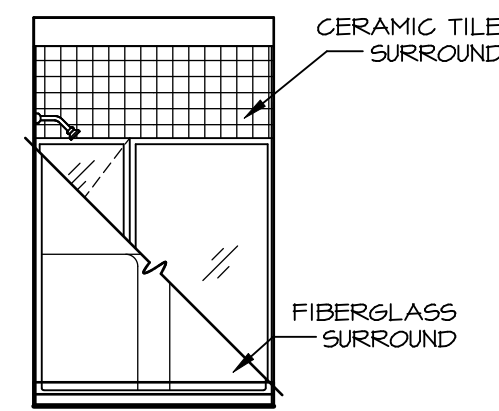
E FIRST FLOOR BATH
SCALE: 1/4" = 1'-0"



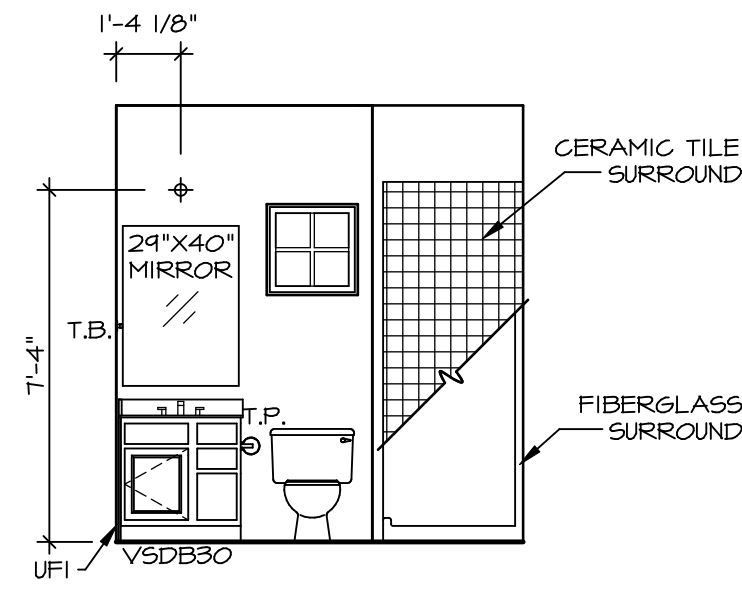
F BATH #1
SCALE: 1/4" = 1'-0"



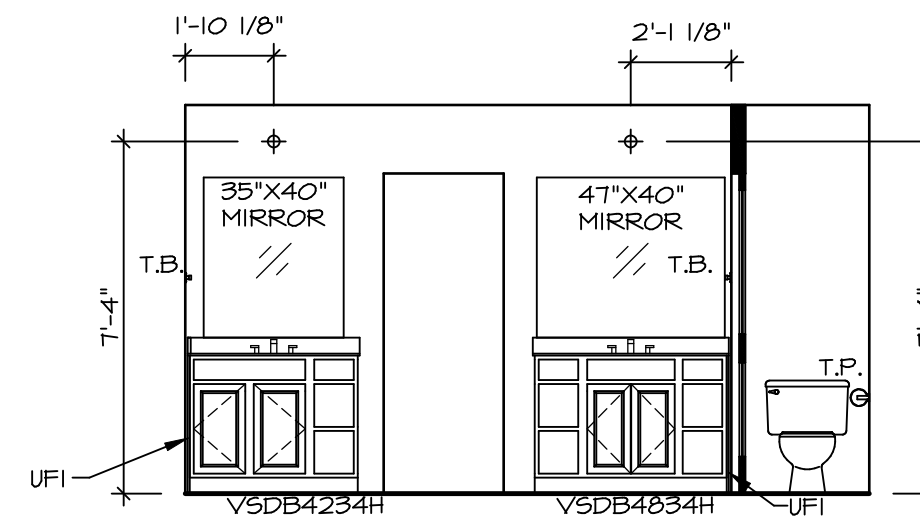
G BATH #1
SCALE: 1/4" = 1'-0"



L OWNERS BATH
SCALE: 1/4" = 1'-0"



D FIRST FLOOR BATH
SCALE: 1/4" = 1'-0"



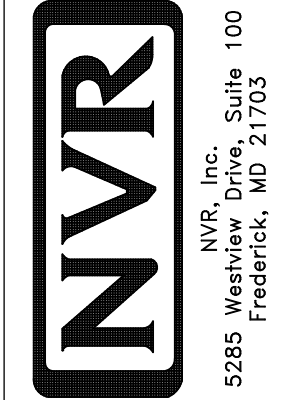
M OWNER'S BATH
SCALE: 1/4" = 1'-0"

NOTES:

1. TEMPERED GLASS SHOWER ENCLOSURE WITH SWING DOOR OR OPTIONAL SLIDING DOOR BY DIVISION
2. TUB ACCESS PANELS PROVIDED AS NEEDED, ALL MATERIALS BY DIVISION
3. REFER TO SHEET IT-2 FOR TUB AND SHOWER DETAILS.
4. ALL VSDB24-42 DRAWERS TO BE SET ON RIGHT HAND.
5. BATH ELEVATIONS ARE SHOWN PER PLAN.

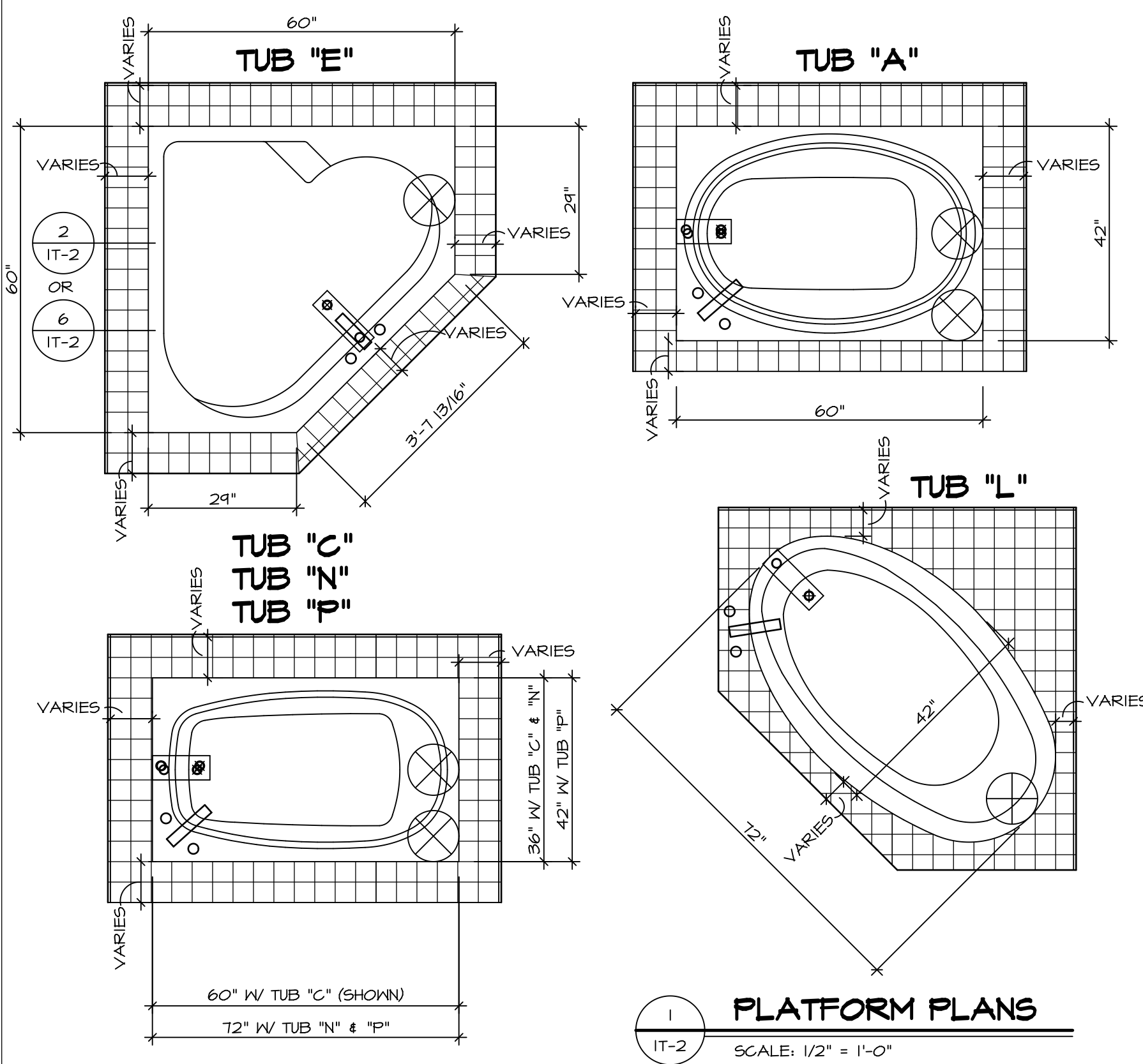
SHEET NO. **A-13**
MODEL **LANDON**
DRAWING TITLE **BATH ELEVATIONS**
OPTION DESCRIPTION

SET NO. **LDN00**
VERSION **02**
DRAWN BY **SDTT**
DATE: **7/30/15**
OPTION



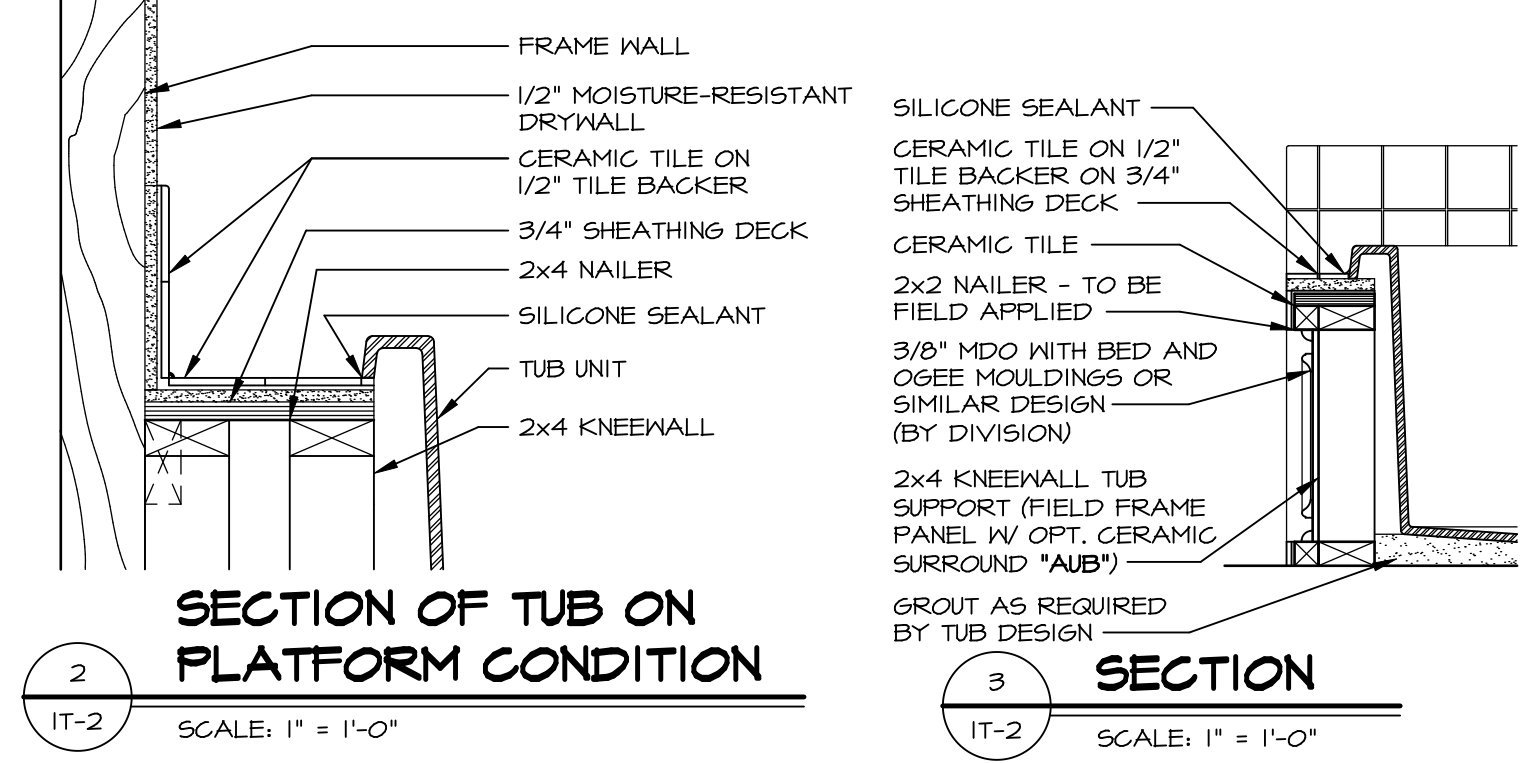
© NVR, Inc. All rights reserved. The information contained herein is the property of NVR, Inc. and is not to be reproduced, changed or copied in any form without the prior written consent of NVR, Inc.

DIV-COMM-LOT-UNIT **DCY-CH-S544**
COMM-LOT
STREET ADDRESS **CARRIAGE TRAILS - S544**
CITY **TIPP CITY** STATE **OH** ZIP **45371**

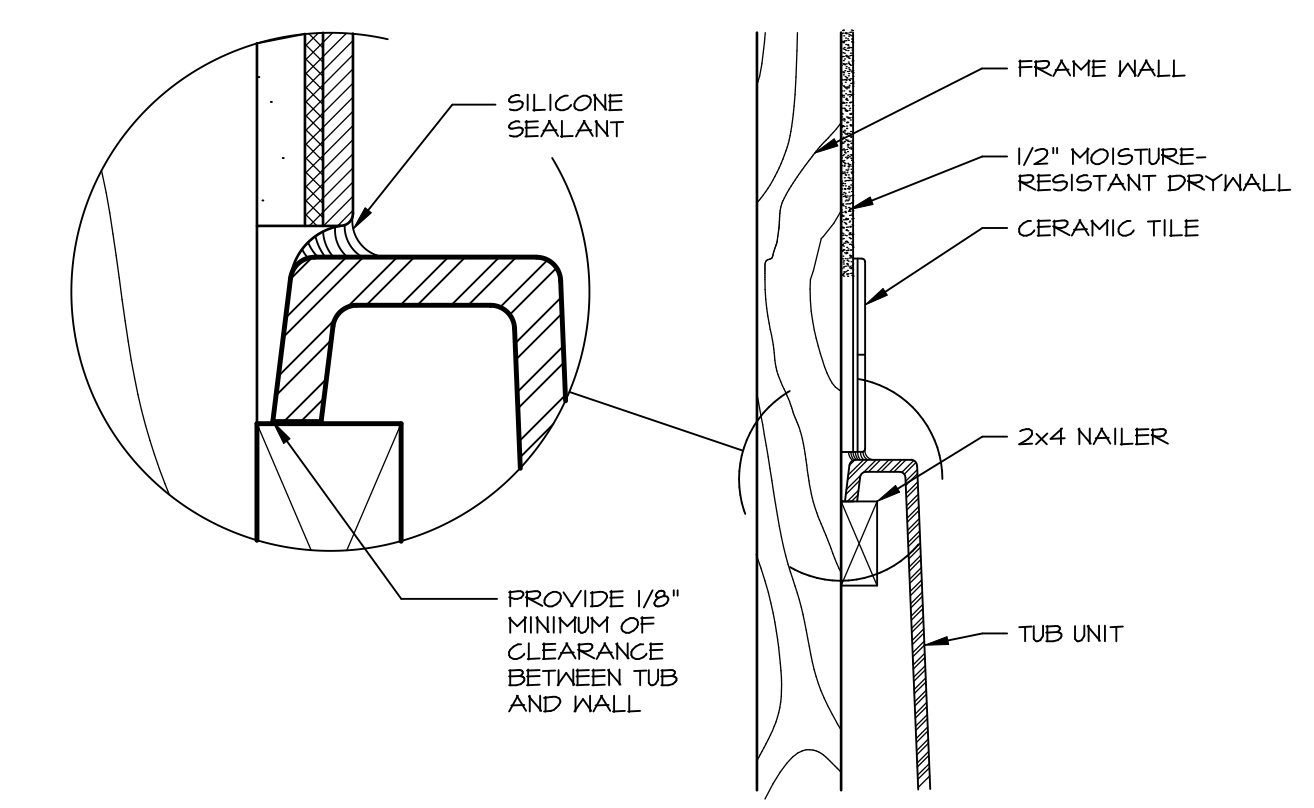


1 PLATFORM PLANS
SCALE: 1/2" = 1'-0"

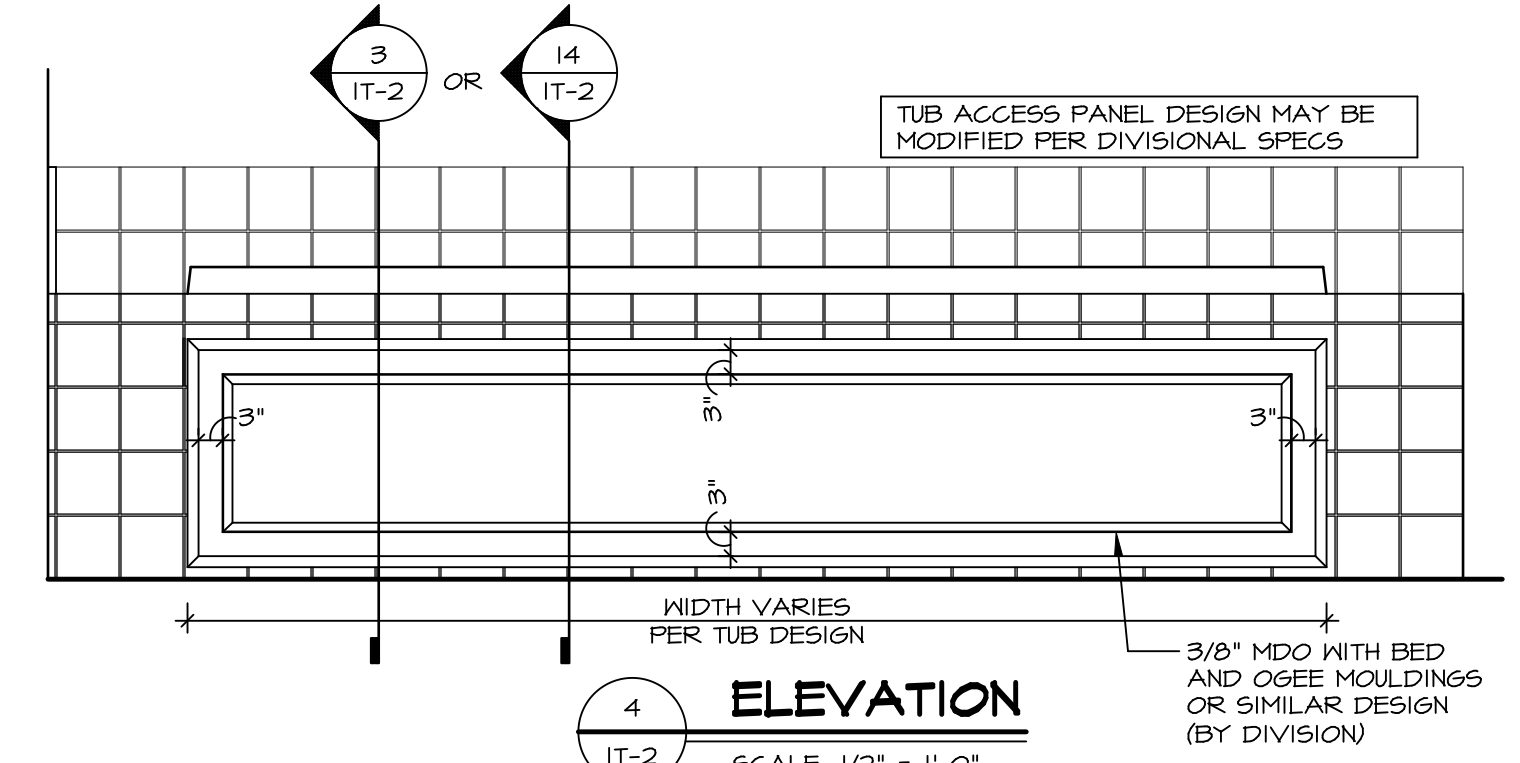
TUB	MANUF.	HEIGHT	WIDTH	LENGTH	TUB DECK PANEL HEIGHT
"A"	KOHLER/ STERLING	18 3/4"	42"	60"	17 1/8"
"C"	KOHLER/ STERLING	18 3/4"	36"	60"	17 1/8"
"E"	KOHLER/ STERLING	19 1/2"	60"	60"	17 7/8"
"L"	KOHLER/ STERLING	18 1/2"	42"	72"	16 7/8"
"N"	KOHLER/ STERLING	18 3/4"	36"	72"	17 1/8"
"P"	KOHLER/ STERLING	18 3/4"	42"	72"	17 1/8"



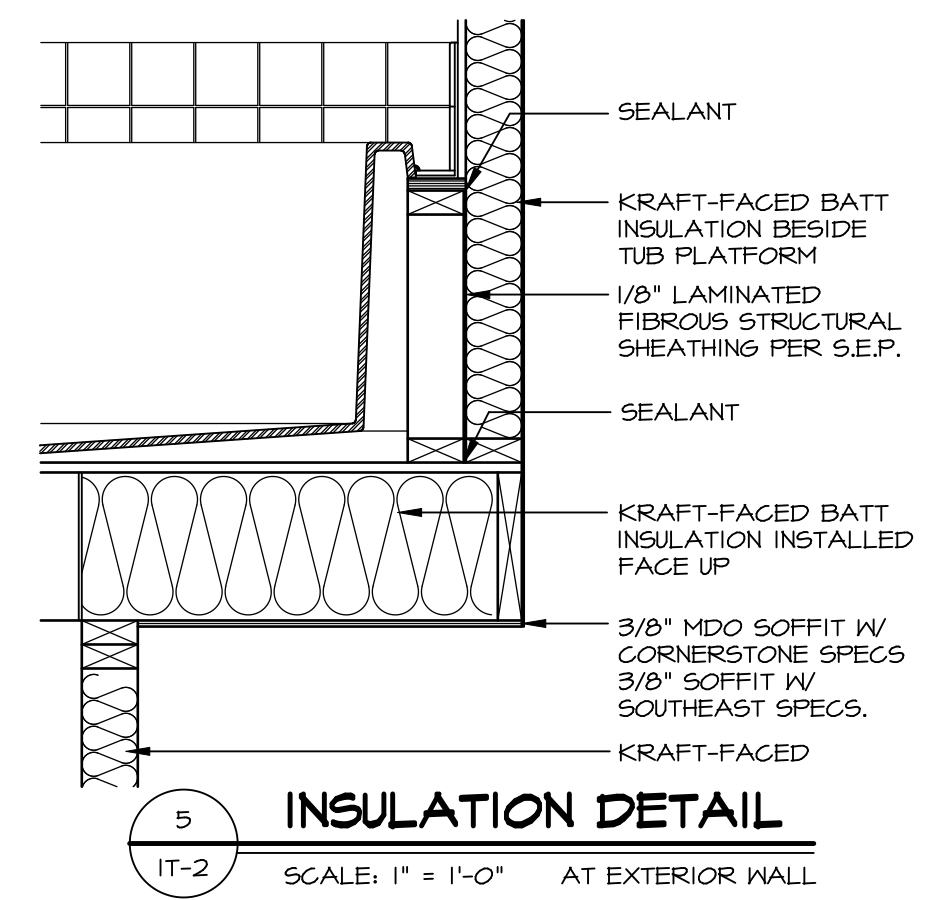
2 SECTION OF TUB ON PLATFORM CONDITION
SCALE: 1" = 1'-0"



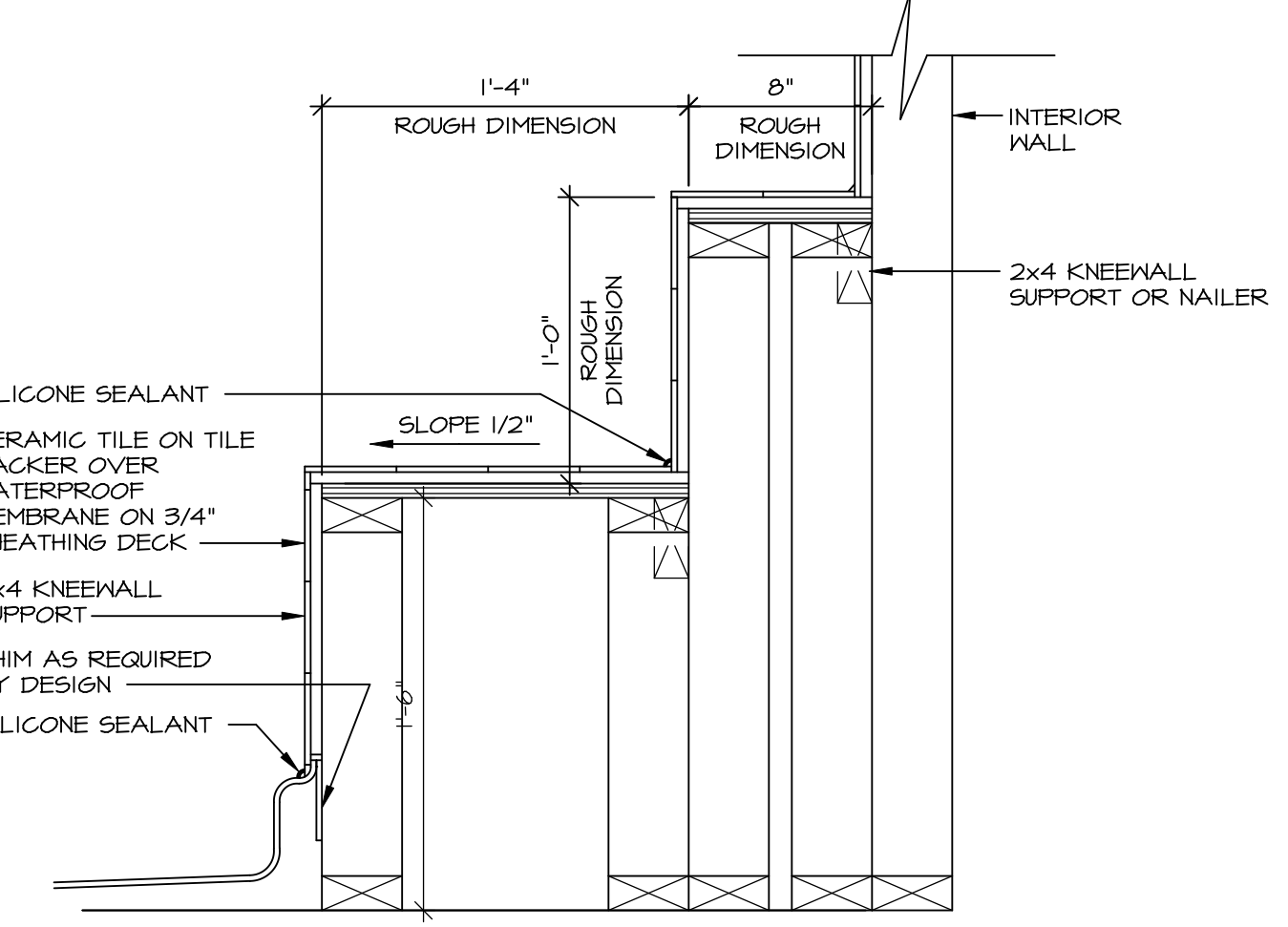
3 SECTION OF TUB TO WALL CONDITION
SCALE: 1" = 1'-0"



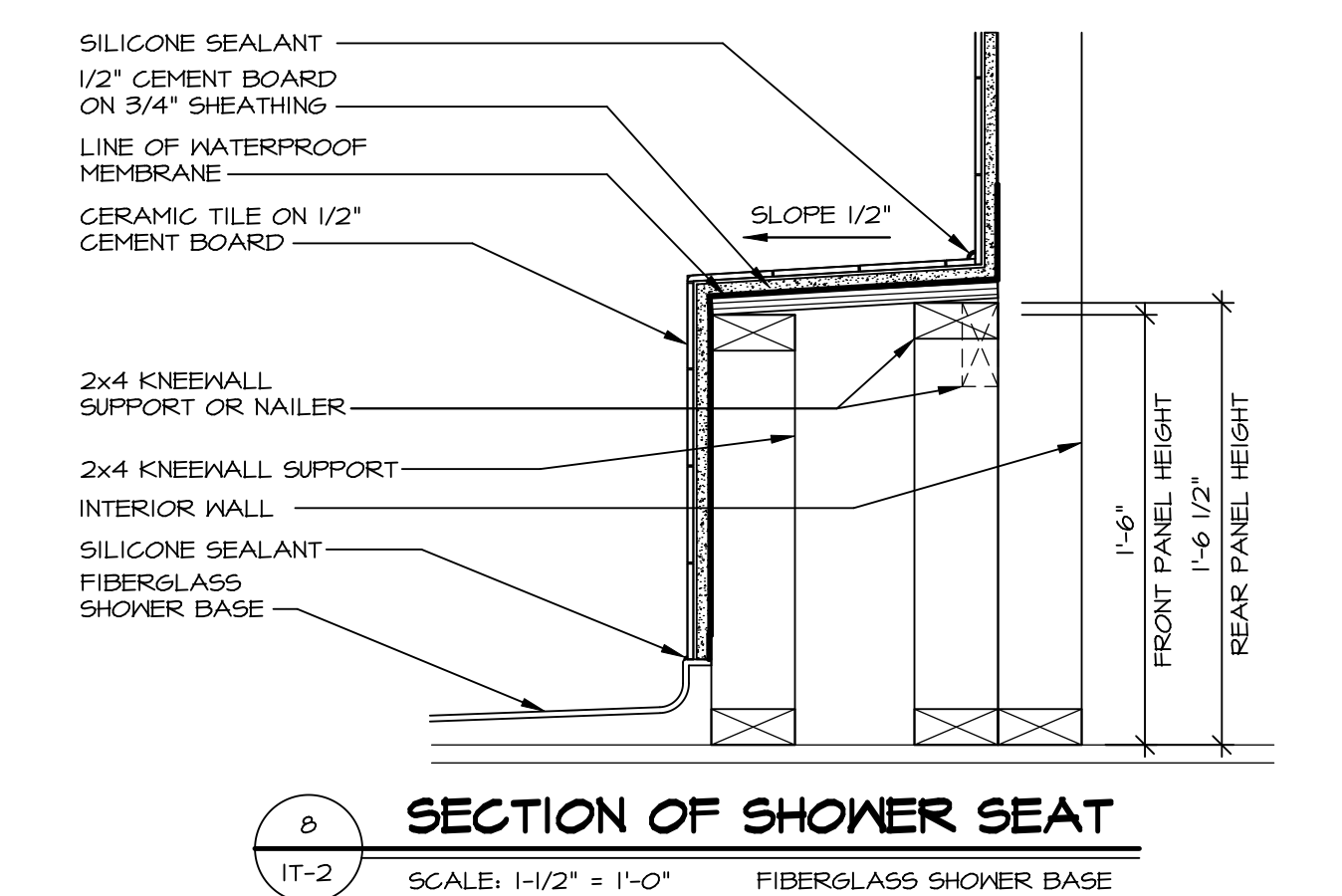
4 ELEVATION
SCALE: 1/2" = 1'-0"



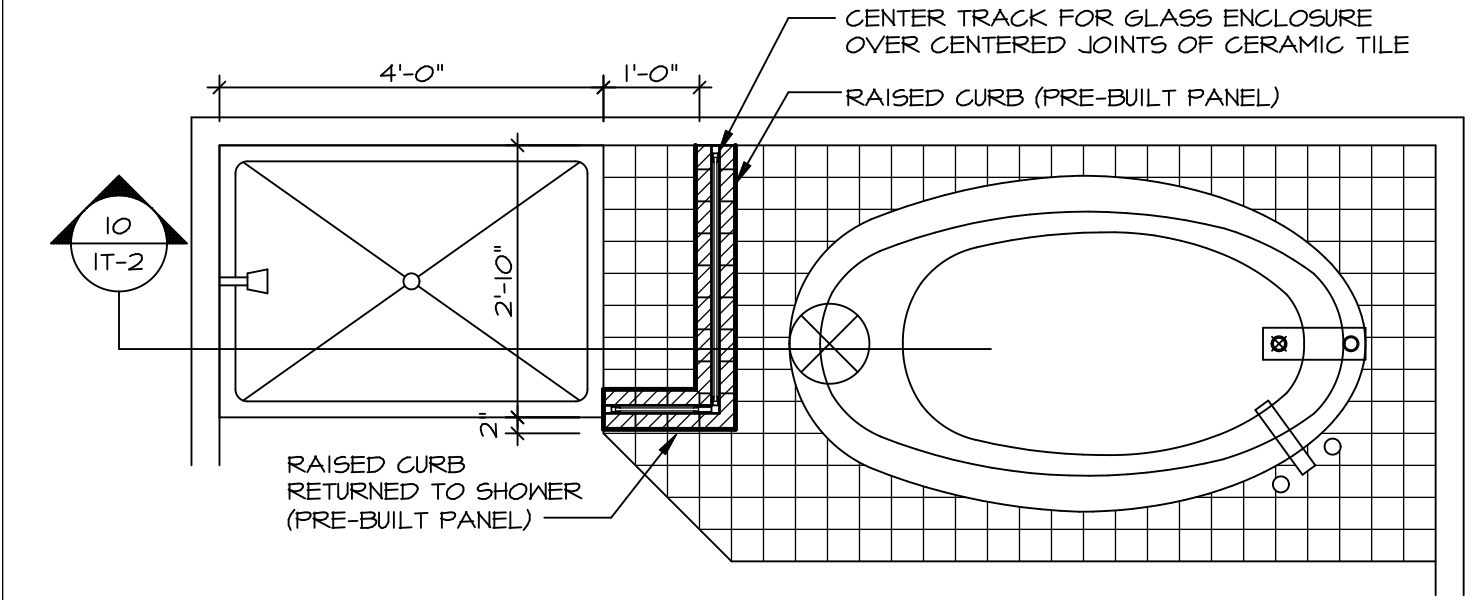
5 INSULATION DETAIL
SCALE: 1" = 1'-0" AT EXTERIOR WALL



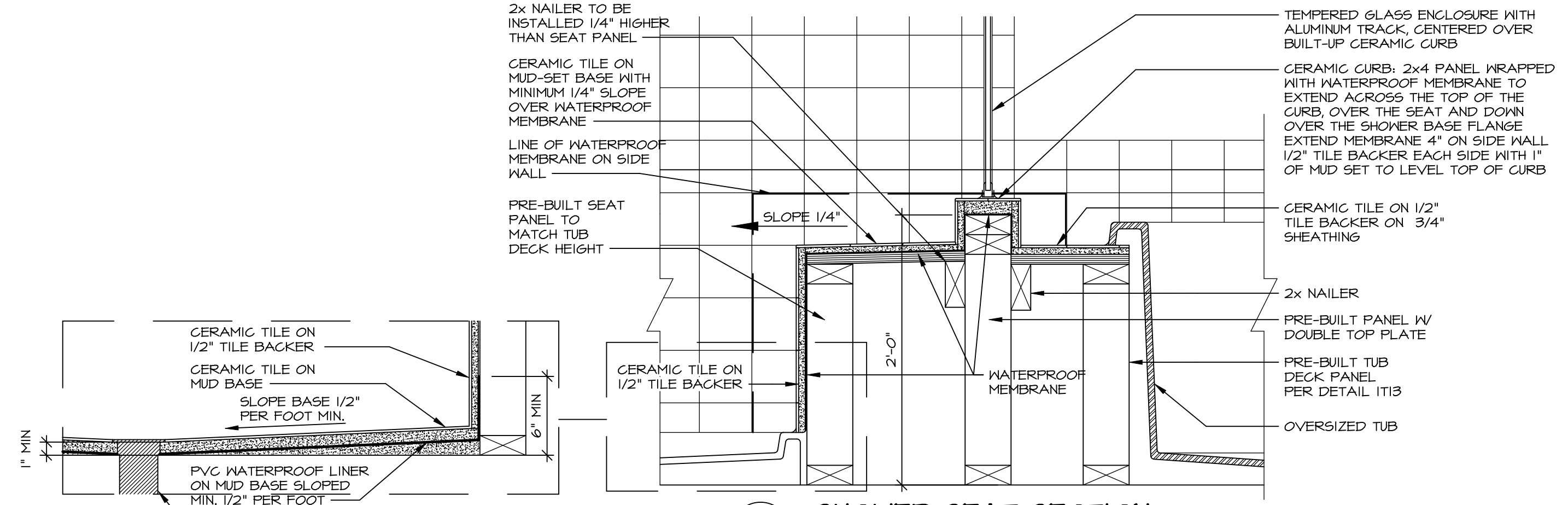
7 SECTION OF SHOWER SEAT AND SHELF
SCALE: 1/2" = 1'-0"



8 SECTION OF SHOWER SEAT
SCALE: 1-1/2" = 1'-0" FIBERGLASS SHOWER BASE



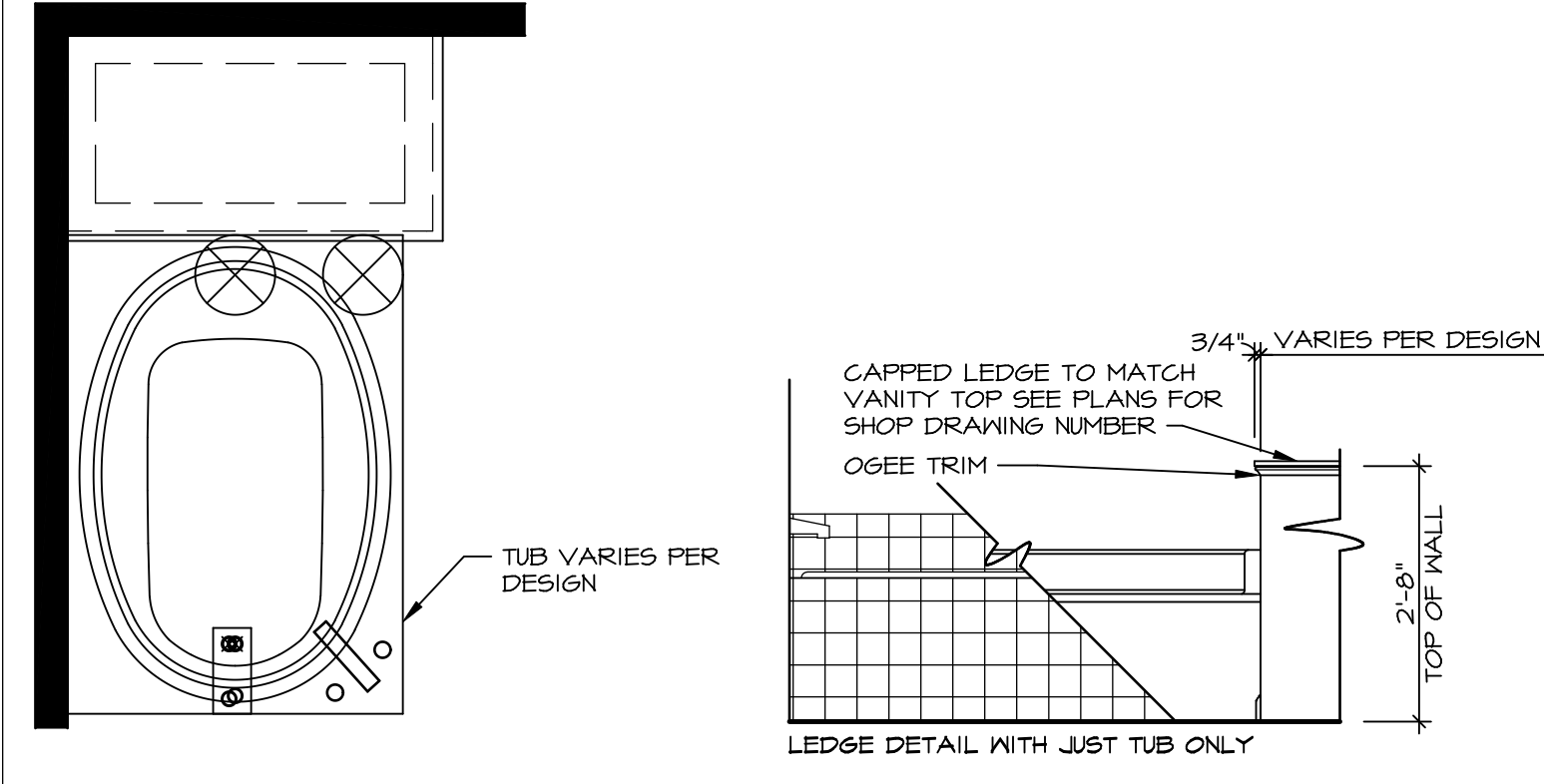
9 SHOWER SEAT PLAN / DETAIL
SCALE: 1/2" = 1'-0"



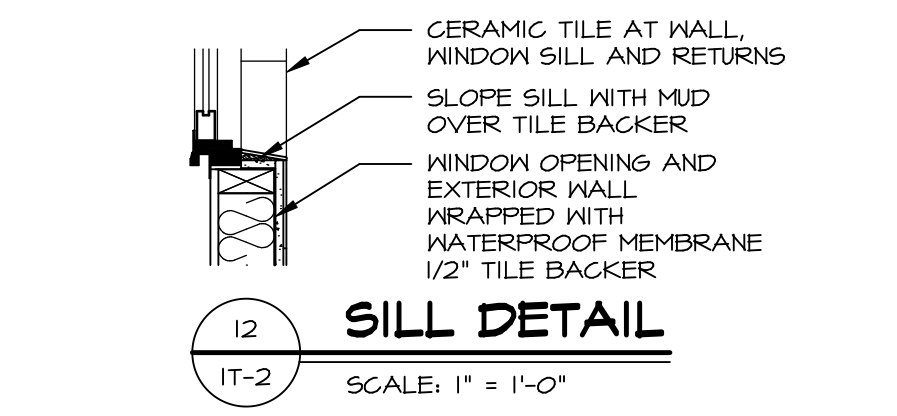
10 SHOWER SEAT SECTION
SCALE: 1-1/2" = 1'-0"



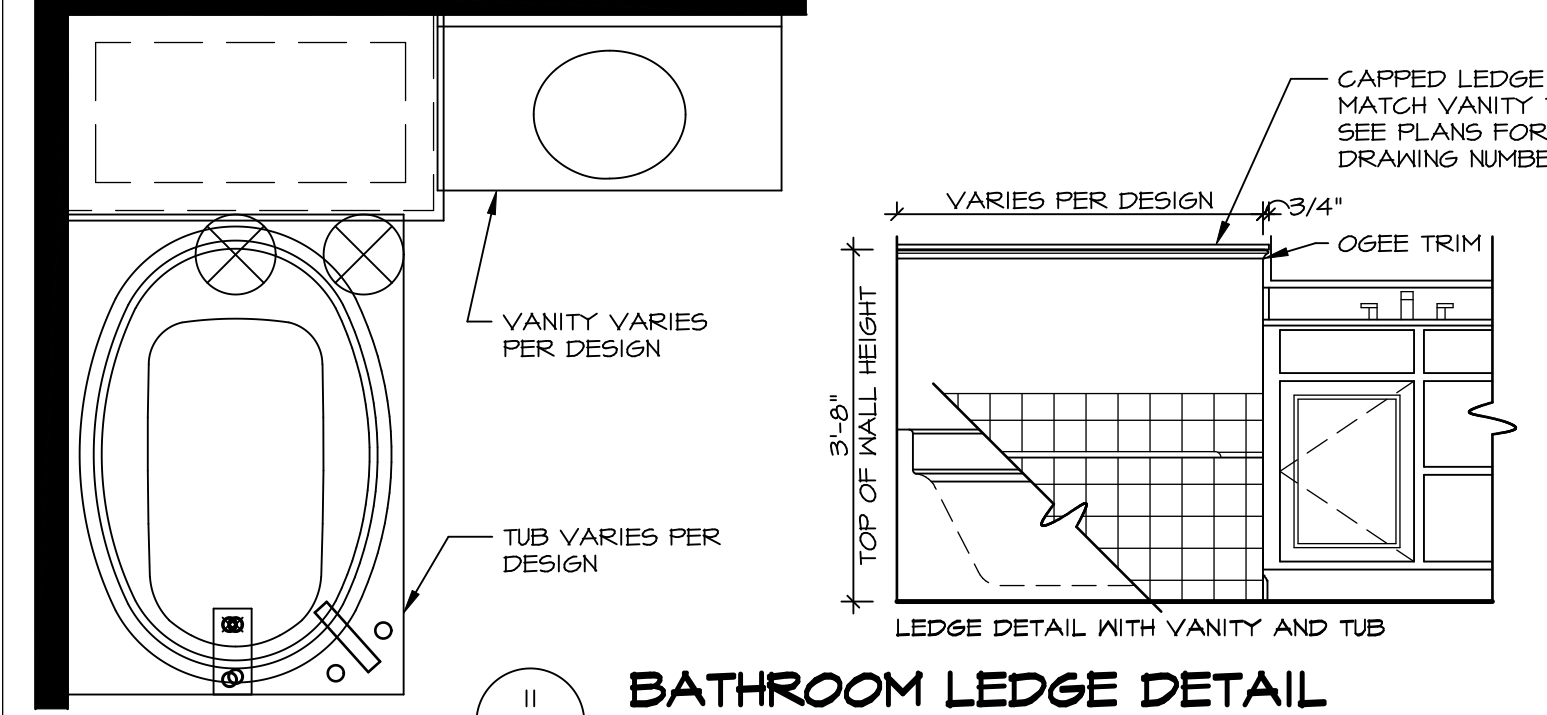
11 ALTERNATE SHOWER PAN DETAIL



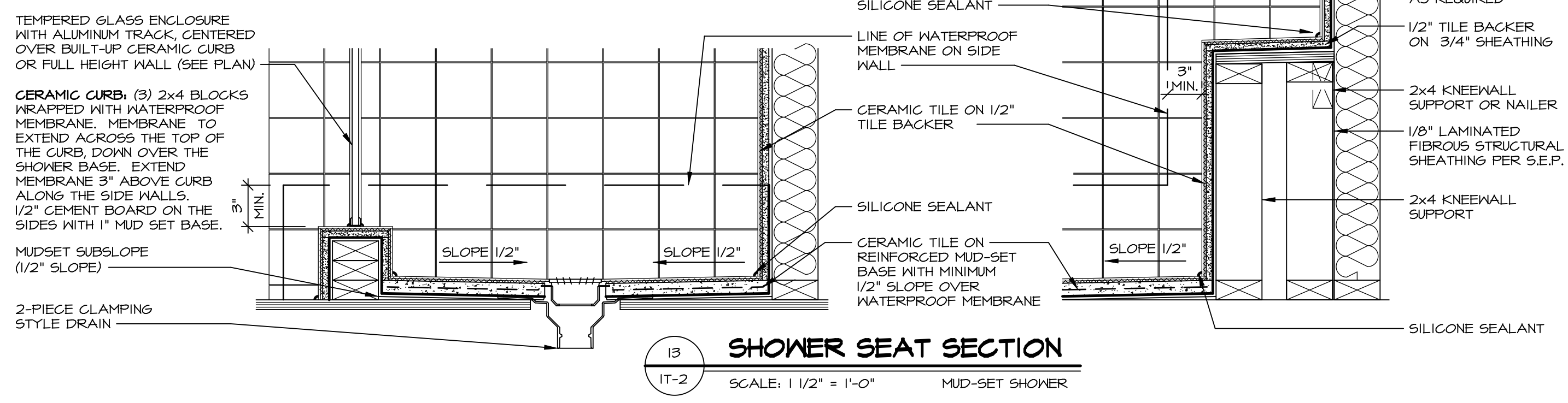
12 BATHROOM LEDGE DETAIL
SCALE: 1/2" = 1'-0"



13 SILL DETAIL
SCALE: 1" = 1'-0"



14 BATHROOM LEDGE DETAIL
SCALE: 1/2" = 1'-0"

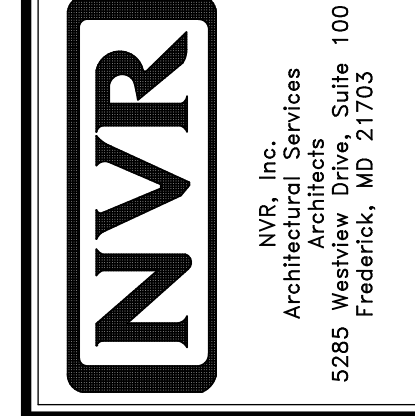


15 SHOWER SEAT SECTION
SCALE: 1 1/2" = 1'-0" MUD-SET SHOWER

REMARKS

REV. NO.	DATE	DESCRIPTION
1	5/11/17	EBP - REVISED DETAIL I AND II TO REMOVE TUB ACCESS PANEL REF. (095 #15 3414)
2	9/21/17	EBP - REVISED T-FLY NOTE TO CALL OUT LFS
3	9/21/17	EBP - REVISED NOTE ON DETAIL #1 - REVISED ORDER OF MATERIAL PARA#4934
4	8/28/18	EBP - DTL 8 / 19 ME REMOVED THE 2x6 BULKING AT BASE OF SHWR REQUEST #4663

NVR, Inc., owner, expressly reserves its common law copyright and other property rights in these plans. These plans are not to be copied, reproduced, or otherwise used in any way without the prior written consent of NVR, Inc.



SET NO.	VERSION	DRAWN BY	DATE:	OPTION
1	1			

MODEL: STANDARD DETAILS
DRAWING TITLE: INTERIOR TRIM DETAILS
BATH DETAILS
OPTION DESCRIPTION:

SHEET NO. IT-2