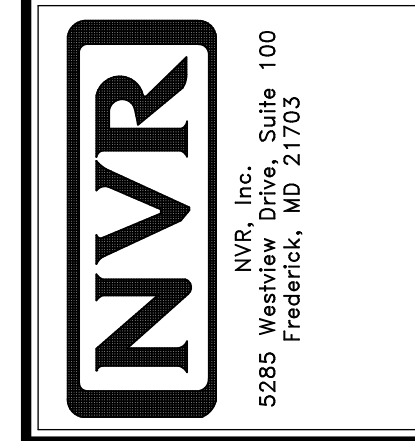


1
A-5 PLUMBING PLAN
SCALE: 1/4" = 1'-0"

SHEET NO. A-5 33

MODEL LONDON
DRAWING TITLE PLUMBING PLAN
OPTION DESCRIPTION

SET NO. LDN00
VERSION 02
DRAWN BY PTH
DATE: 8/13/15
OPTION



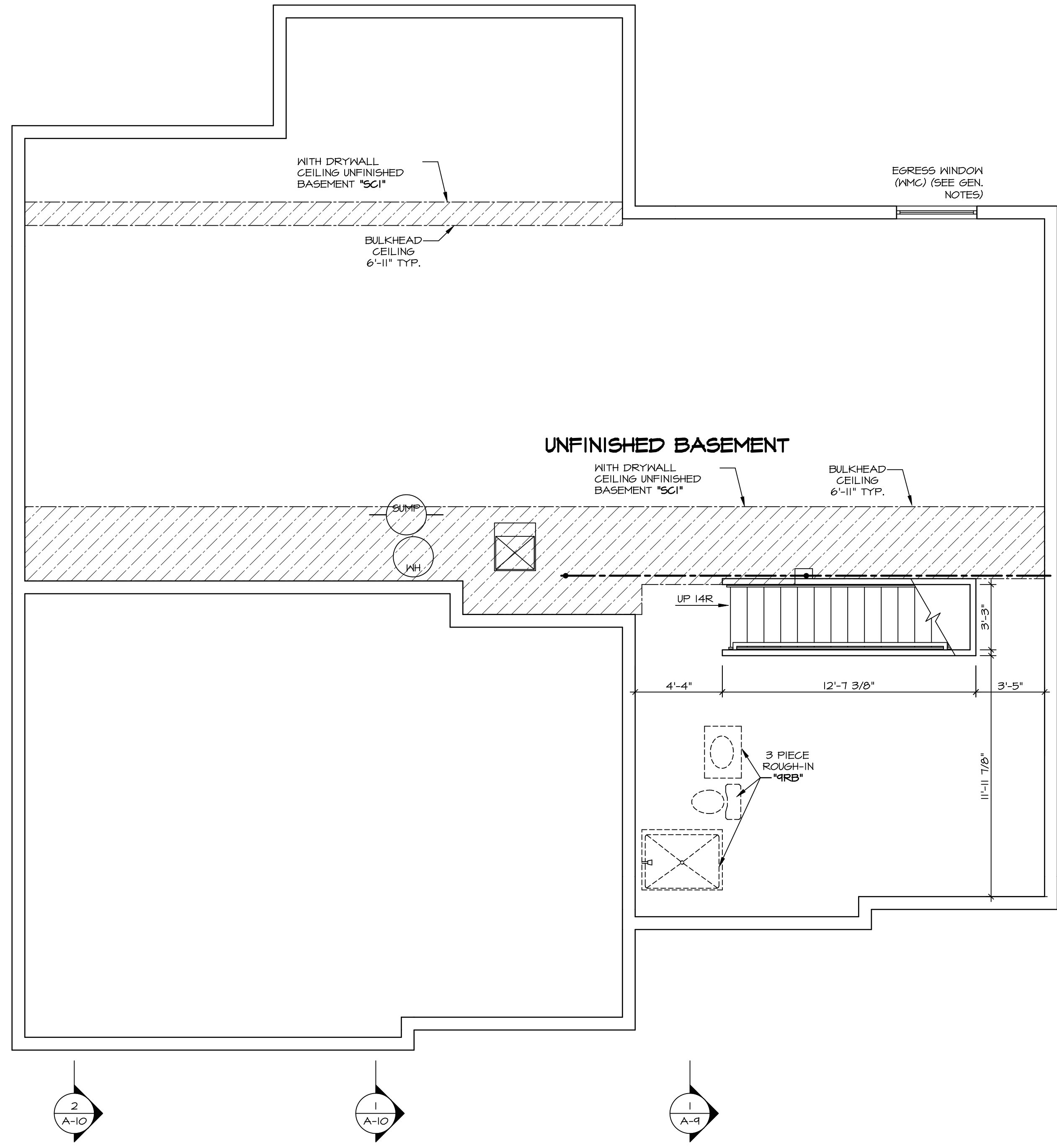
© NVR, Inc. expressly reserves the right to modify or amend these plans at any time without notice. These plans are not to be reproduced, changed or altered in any way without the written consent of NVR, Inc.

DIV-COMM-LOT-UNIT DCY-CH-S560
COMM-LOT
CARRIAGE TRAILS - S560
STREET ADDRESS
9123 WHITE ASH DRIVE
CITY TIPP CITY STATE OH ZIP 45371
APT. NO. ----

LEGEND	
	BEARING WALL
	NON BEARING WALL
	INDICATES BEARING FROM POINT-LOAD ABOVE
	JACKS
	BEAM/HEADER
	PAD FOOTING
	STEEL COLUMN
	PORTAL FRAME
	JOIST/TRUSS
	LVL
	ENGINEERING PAGE NUMBER
SEE FC DETAILS FOR FRAMING CONNECTORS	

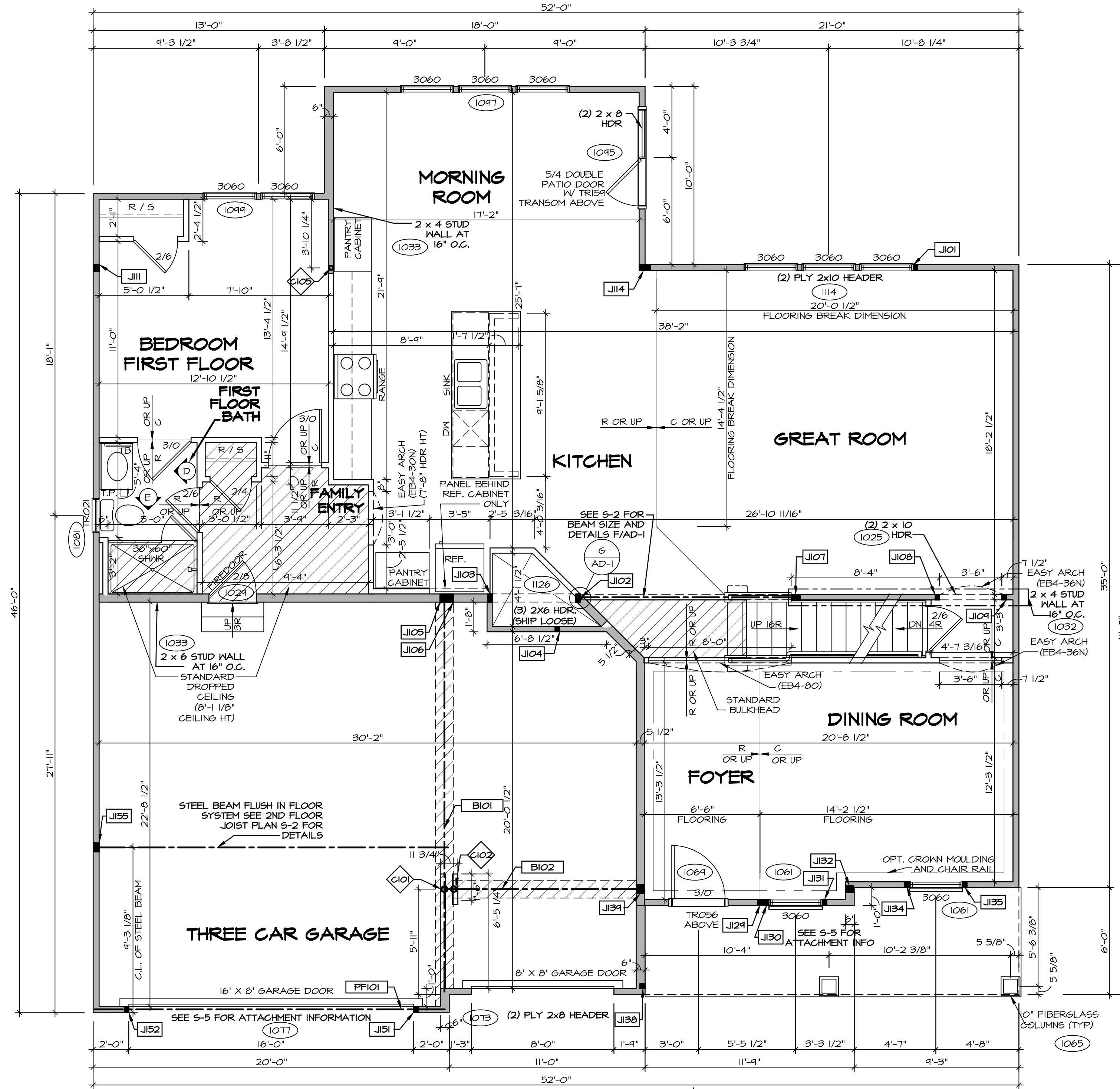
- FLOOR PLAN NOTES**
- ALL HEADERS ARE (2) 2x6 w/ 2x4 WALLS OR (3) 2x6 w/ 2x6 WALLS, UNLESS OTHERWISE NOTED.
 - ALL HEADERS TO HAVE (1) 2x4 OR 2x6 JACK EACH END, UNLESS OTHERWISE NOTED.
 - ALL EXTERIOR WALLS TO BE 4" AND ALL INTERIOR WALLS TO BE 3 1/2", UNLESS OTHERWISE NOTED.
 - HATCHED AREAS INDICATE DROPPED CEILINGS. ALL DROPPED CEILINGS ARE 12" UNLESS OTHERWISE NOTED.
 - SEE "BRACED WALL PANEL DETAIL SHEET" FOR SPECIAL WALL FRAMING LOCATIONS AND HEADER SIZES, IF APPLICABLE.
 - SEE STANDARD DETAIL CATEGORY "IT" SHEET(S) FOR INTERIOR TRIM DETAILS.
 - SEE ARCHITECTURAL DETAIL SHEET "AD" FOR HOUSE SPECIFIC INTERIOR TRIM OPTION TABLE.
 - ALL WINDOWS HAVE "1'-0 1/2" HEADER HEIGHT UNLESS OTHERWISE NOTED.

- GYPSUM NOTES**
- AT GARAGE:
GYPSUM BOARD AT COMMON WALLS, CEILINGS, BEAM WRAPS AND SUPPORTS PER STANDARD DETAIL FA-1(b) FIRE ASSEMBLIES OR AS REQUIRED BY LOCAL CODE.
- AT STAIRS:
1/2" GYPSUM BOARD AT UNDERSIDE OF STAIRS AND WALLS IN CLOSET
- BASEMENT WITH I-JOIST FLOOR SYSTEM ABOVE:
WITH OPTION "SCI" - DRYWALL UNFINISHED BASEMENT CEILING AREA
- NOTES:**
- 1/2" GYPSUM WALL BOARD REQUIRED ON CEILING IN UNFINISHED AREAS WHEN NO SPRINKLER SYSTEM IS INSTALLED
 - A MAXIMUM AREA OF 20 SQ FT MAY BE OMITTED AS NEEDED FOR INSTALLATION OF PLUMBING, ELECTRICAL, AND/OR HVAC (TYPICALLY AN 8'-0"x8'-0" CEILING SPACE ABOVE MECHANICAL AREA)
 - PROVIDE FIRE BLOCKING AS REQUIRED AT PERIMETER OF ANY AREAS WHERE DRYWALL HAS BEEN OMITTED.



BASEMENT FLOOR PLAN
SCALE: 1/4" = 1'-0"

SHEET NO. A-6	MODEL LONDON	SET NO. LDN00	VERSION 02
		DRAWN BY HD	DATE: 8/13/15
OPTION DESCRIPTION 37	DRAWING TITLE BASEMENT FLOOR PLAN	OPTION	
		OPTION	
DIV-COMM-LOT-UNIT DCY-CH-S560		COMM-LOT CARRIAGE TRAILS - S560	
STREET ADDRESS 8123 WHITE ASH DRIVE		APT. NO. ----	STATE OH
CITY TIPP CITY		ZIP 45371	
<p><small>© NVR, Inc. expressly reserves the right to modify these plans without notice. These plans are not to be reproduced, changed or altered in any way without the written consent of NVR, Inc.</small></p> <p>NVR NVR, Inc. Suite 100 Fredericks, MD 21703 5285 Washington Blvd</p>			
<p><small>C:\NVR\Solves\LONDON_LDNO0_02\DCY-CH-S560\1613379\Sheets\Lot_Spec\fc\37 A-6 BSMT_LS.dwg 01/21/20 - 6:53 am</small></p>			



FLOOR PLAN NOTES

1. ALL HEADERS ARE (2) 2x6 w/ 2x4 WALLS OR (3) 2x6 w/ 2x6 WALLS, UNLESS OTHERWISE NOTED.
2. ALL HEADERS TO HAVE (1) 2x4 OR 2x6 JACK EACH END, UNLESS OTHERWISE NOTED.
3. ALL EXTERIOR WALLS TO BE 4" AND ALL INTERIOR WALLS TO BE 3 1/2", UNLESS OTHERWISE NOTED.
4. HATCHED AREAS INDICATE DROPPED CEILINGS. ALL DROPPED CEILINGS ARE 12" UNLESS OTHERWISE NOTED.
5. SEE "BRACED WALL PANEL DETAIL SHEET" FOR SPECIAL WALL FRAMING LOCATIONS AND HEADER SIZES, IF APPLICABLE.
6. SEE STANDARD DETAIL CATEGORY "IT" SHEET(S) FOR INTERIOR TRIM DETAILS.
7. SEE ARCHITECTURAL DETAIL SHEET "AD" FOR HOUSE SPECIFIC INTERIOR TRIM OPTION TABLE.
8. ALL WINDOWS HAVE 8'-0 1/2" HEADER HEIGHT UNLESS OTHERWISE NOTED.

GYPSUM NOTES

AT GARAGE:
 GYPSUM BOARD AT COMMON WALLS, CEILINGS, BEAM WRAPS AND SUPPORTS PER STANDARD DETAIL FA-1(b) FIRE ASSEMBLIES OR AS REQUIRED BY LOCAL CODE.

AT STAIRS:
 1/2" GYPSUM BOARD AT UNDERSIDE OF STAIRS AND WALLS IN CLOSET

LEGEND

- BEARING WALL
 - NON BEARING WALL
 - INDICATES BEARING FROM POINT-LOAD ABOVE
 - JACKS
 - BEAM/HEADER
 - PAD FOOTING
 - STEEL COLUMN
 - PORTAL FRAME
 - JOIST/TRUSS
 - LVL
 - ENGINEERING PAGE NUMBER
- SEE FC DETAILS FOR FRAMING CONNECTORS

FIRST FLOOR JACK SCHEDULE

IDENTIFIER	DESCRIPTION	OPTIONS	ENG. NUM.	REMARKS
J101	JACK - (2) 2X4 SPF STUD GRADE		1114	
J102	JACK - (2) 2X6 SPF STUD GRADE		1121	
J103	JACK - (2) 2X6 SPF STUD GRADE		1121	
J104	JACK - (2) 2X4 SPF STUD GRADE		1006	
J105	JACK - (4) 2X6 SPF STUD GRADE	MAV	1036	
J106	JACK - (2) 2X6 SPF STUD GRADE		1034, 1041	
J107	JACK - (4) 2X4 SPF STUD GRADE		1027	
J108	JACK - (2) 2X4 SPF STUD GRADE		1025	
J109	JACK - (2) 2X4 SPF STUD GRADE		1025	
J111	JACK - (3) 2X4 SPF STUD GRADE	BAR	1012, 1015, 1021	
J114	JACK - (5) 2X4 SPFH	MAA	1018, 1021	
J124	JACK - (3) 2X4 SPF STUD GRADE	ELC	1010	
J130	JACK - (2) 2X4 SPF STUD GRADE	ELC	1061	
J131	JACK - (2) 2X4 SPF STUD GRADE	ELC	1061	
J132	JACK - (3) 2X6 SPF STUD GRADE	ELC	2000	
J134	JACK - (2) 2X4 SPF STUD GRADE	ELC	1061	
J135	JACK - (2) 2X4 SPF STUD GRADE	ELC	1061	
J138	JACK - (2) 2X4 SPF STUD GRADE	ELC	1065	
J139	JACK - (4) 2X6 SPF STUD GRADE	ELC, ELL	1046	
J151	JACK - (2) 2X4 SPF STUD GRADE		1077	
J152	JACK - (2) 2X4 SPF STUD GRADE		1077	
J155	JACK - (4) 2X4 SPF STUD GRADE	MAV	1122/1124	

FIELD INSTALLED FIRST FLOOR BEAM/HEADER SCHEDULE

IDENTIFIER	DESCRIPTION	LENGTH	OPTIONS	ENG. NUM.	REMARKS
B101	BEAM STEEL - W8X21	22'-1"	MAV	1046, 1048, 1050	
B102	BEAM STEEL - W8X13	10'-11"	ELC, ELL	1046, 1048, 1050	
PFI01	EXT HEADER - 2X12 - 2 PLY	14'-8"		1077	

STEEL COLUMN SCHEDULE

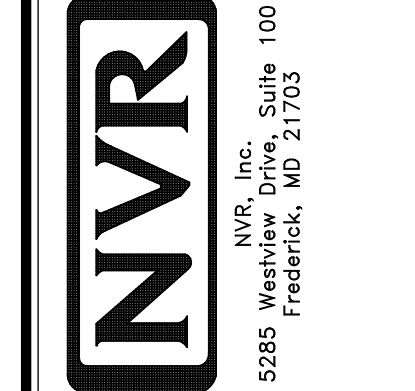
IDENTIFIER	STYLE	HEIGHT	OPTIONS	ENG. NUM.	REMARKS
C101	STANCHION - 4 IN DIA 11GA ADJ.	8'-11 5/8"	MAV/FBA	1036	
C102	STANCHION - 4 IN DIA 11GA ADJ.	9'-7 1/4"	FBA	1036	
C105	STANCHION - 3 IN SCHED 40	9'-1 1/8"	MAA, KAF, BAR	1021	

FIRST FLOOR PLAN

SCALE: 1/4" = 1'-0"

DCY-CH-S560
 COMM-LOT
 CARRIAGE TRAILS - S560
 STREET ADDRESS
 8123 WHITE ASH DRIVE
 CITY TIPP CITY STATE OH ZIP 45371

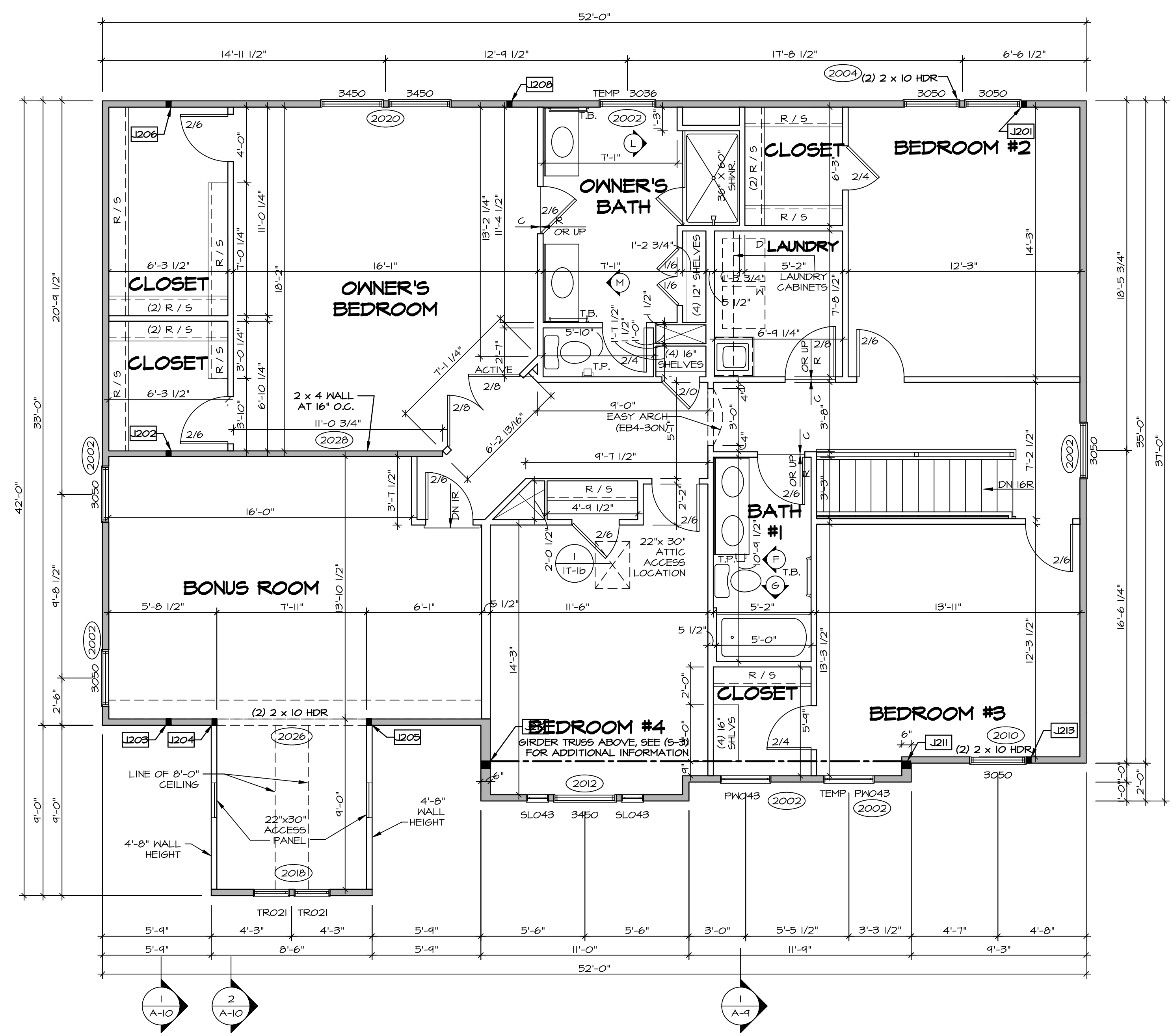
NVR, Inc. expressly reserves the copyright in these plans. These plans are not to be reproduced, changed or copied in any way without the written consent of NVR, Inc.



SET NO. LDN00
 VERSION 02
 DRAWN BY TVT
 DATE: 8/12/15
 OPTION

MODEL LONDON
 DRAWING TITLE FIRST FLOOR PLAN
 OPTION DESCRIPTION

SHEET NO. A-7
 39



SECOND FLOOR PLAN
SCALE: 1/4" = 1'-0"

LEGEND

	BEARING WALL
	NON BEARING WALL
	INDICATES BEARING FROM POINT-LOAD ABOVE JACKS
	BEAM/HEADER
	PAD FOOTING
	STEEL COLUMN
	PORTAL FRAME
	JOIST/TRUSS
	LVL
	ENGINEERING PAGE NUMBER

SEE FC DETAILS FOR FRAMING CONNECTORS

- FLOOR PLAN NOTES**
- ALL HEADERS ARE (2) 2x6 w/ 2x4 WALLS OR (3) 2x6 w/ 2x6 WALLS, UNLESS OTHERWISE NOTED.
 - ALL HEADERS TO HAVE (1) 2x4 OR 2x6 JACK EACH END, UNLESS OTHERWISE NOTED.
 - ALL EXTERIOR WALLS TO BE 4" AND ALL INTERIOR WALLS TO BE 3 1/2", UNLESS OTHERWISE NOTED.
 - HATCHED AREAS INDICATE DROPPED CEILINGS. ALL DROPPED CEILINGS ARE 12" UNLESS OTHERWISE NOTED.
 - SEE "BRACED WALL PANEL DETAIL SHEET" FOR SPECIAL WALL FRAMING LOCATIONS AND HEADER SIZES, IF APPLICABLE.
 - SEE STANDARD DETAIL CATEGORY "IT" SHEET(S) FOR INTERIOR TRIM DETAILS.
 - SEE ARCHITECTURAL DETAIL SHEET "AD" FOR HOUSE SPECIFIC INTERIOR TRIM OPTION TABLE.
 - ALL WINDOWS HAVE 7'-0 1/2" HEADER HEIGHT UNLESS OTHERWISE NOTED.

- GYPSUM NOTES**
- AT GARAGE:
GYPSUM BOARD AT COMMON WALLS, CEILING, BEAM WRAPS AND SUPPORTS PER STANDARD DETAIL FA-1(b) FIRE ASSEMBLIES OR AS REQUIRED BY LOCAL CODE.
- AT STAIRS:
1/2" GYPSUM BOARD AT UNDERSIDE OF STAIRS AND WALLS IN CLOSET

SECOND FLOOR JACK SCHEDULE

IDENTIFIER	DESCRIPTION	OPTIONS	ENG. NUM.	REMARKS
J201	JACK - (2) 2X4 SFF STUD GRADE	ELC, ELL	2001a	
J202	JACK - (2) 2X4 SFF STUD GRADE	ELC, ELL, MAV	2001	
J203	JACK - (2) 2X4 SFF STUD GRADE	ELC, ELL, MAV	2001	
J204	JACK - (2) 2X4 SFF STUD GRADE	MAV		
J205	JACK - (2) 2X4 SFF STUD GRADE	MAV		
J206	JACK - (2) 2X4 SFF STUD GRADE	ELC, ELL, MAV	2001	
J208	JACK - (2) 2X4 SFF STUD GRADE	ELC, ELL, MAA	2000	
J211	JACK - (3) 2X6 SFF STUD GRADE	ELC	2000	EXTEND TO THRU. TOP PLATE
J212	JACK - (3) 2X6 SFF STUD GRADE	ELC	2000	EXTEND TO THRU. TOP PLATE
J213	JACK - (2) 2X4 SFF STUD GRADE	ELC	2010	

DCY-CH-S560

PROJECT: DCY-CH-S560
 COMM-LOT: CARRIAGE TRAILS - S560
 STREET ADDRESS: 8123 WHITE ASH DRIVE
 CITY: TIPP CITY OH
 STATE: OH
 ZIP: 45371

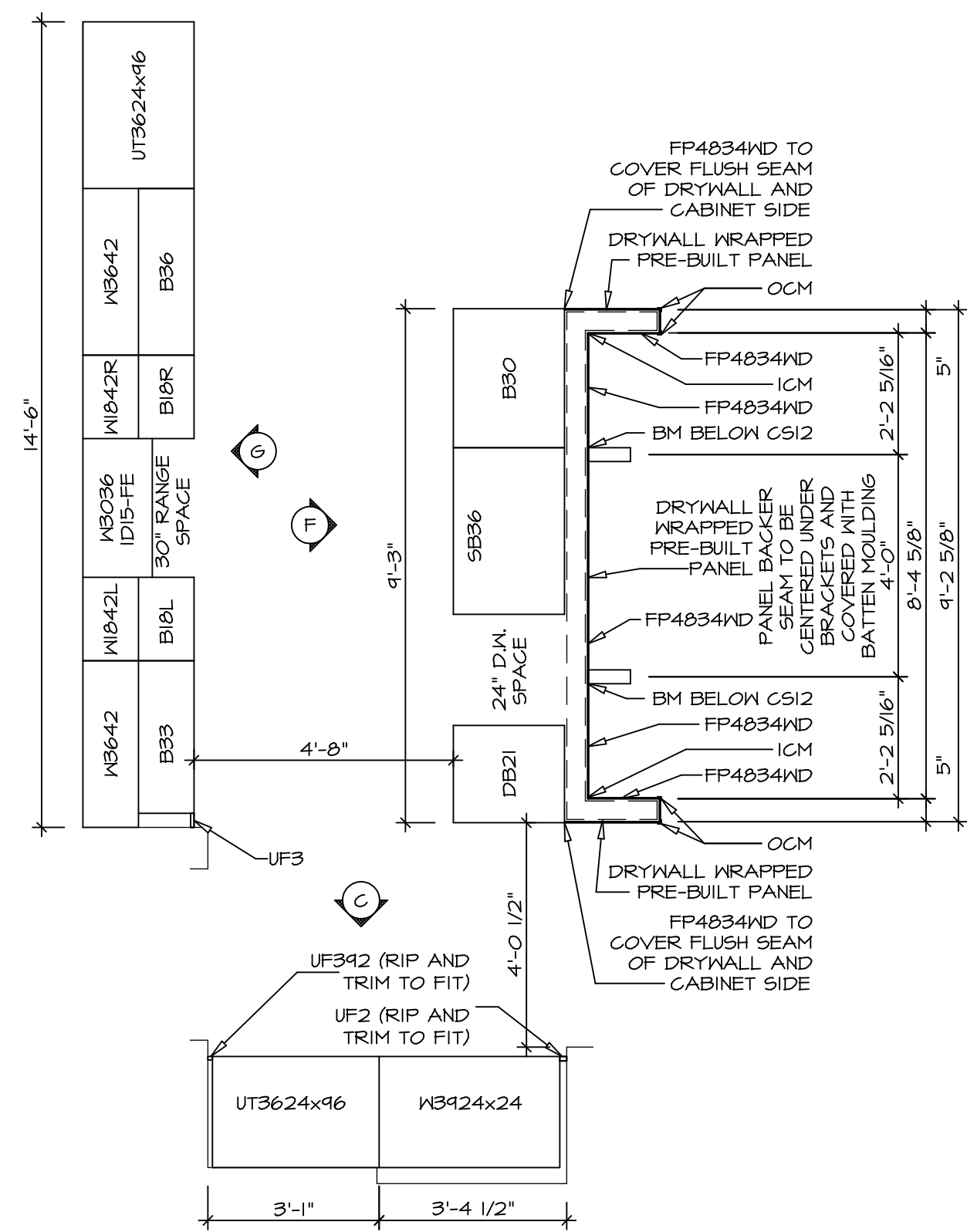
© NVR, Inc. expressly reserves the right to modify these plans without notice. These plans are not to be reproduced, changed or altered in any way without the written consent of NVR, Inc.

NVR
 NVR, Inc. Suite 100
 5285 Washington Blvd.
 Frederick, MD 21703

SET NO. LDN00
 VERSION 02
 DRAWN BY SDTT
 DATE: 7/3/15
 OPTION

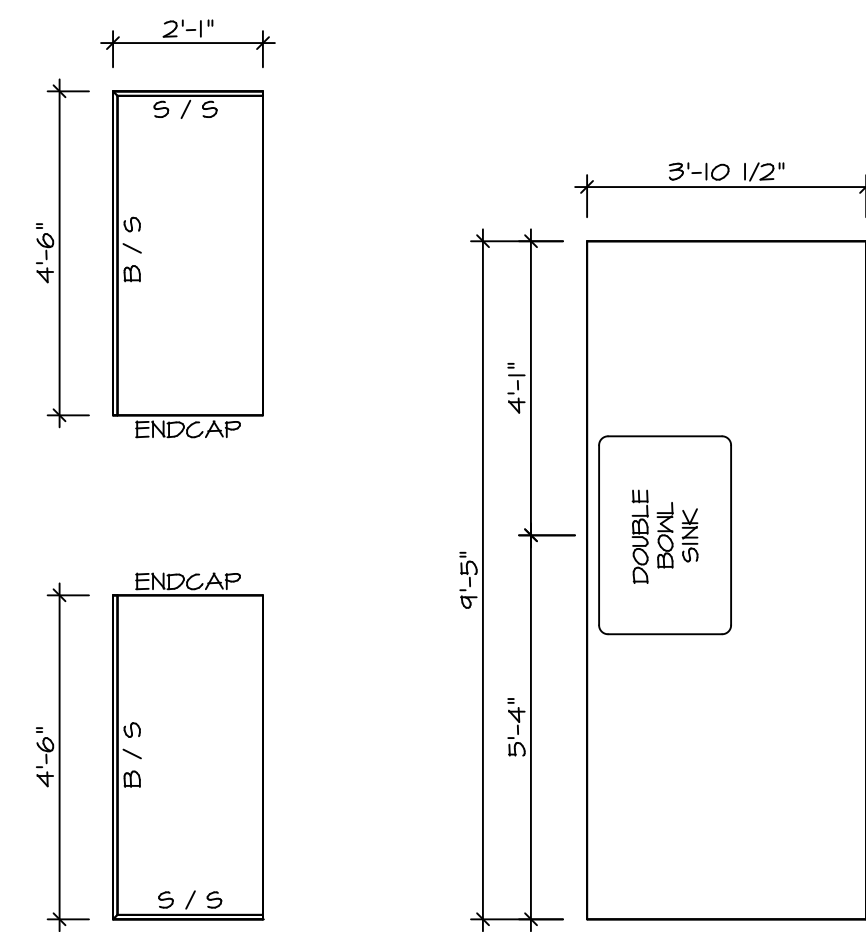
MODEL: LANDON
 DRAWING TITLE: SECOND FLOOR PLAN
 OPTION DESCRIPTION

SHEET NO. **A-8**
 41



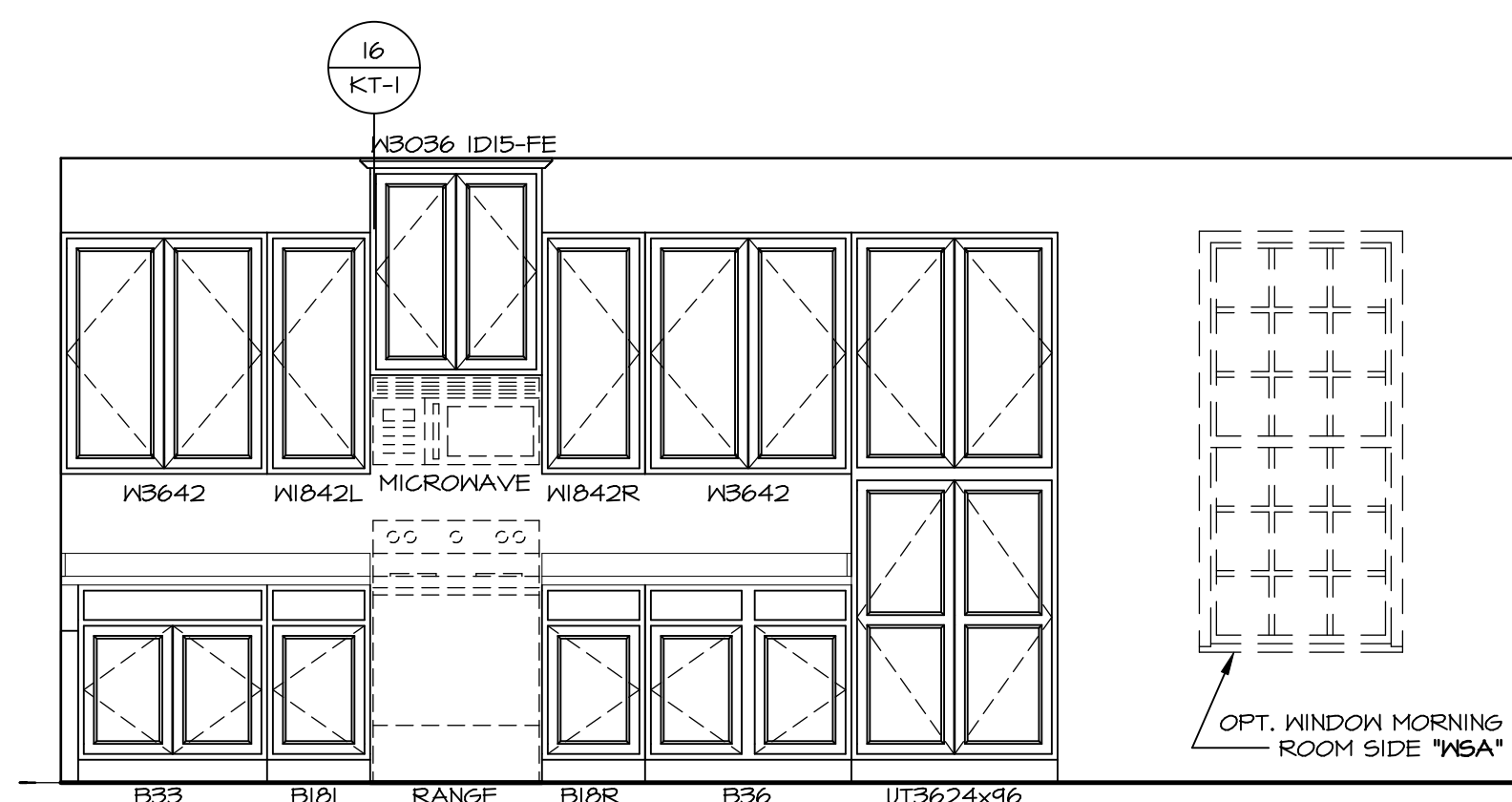
CABINET PLAN
KC - 2960

SCALE: 3/8" = 1'-0" 1
A-12



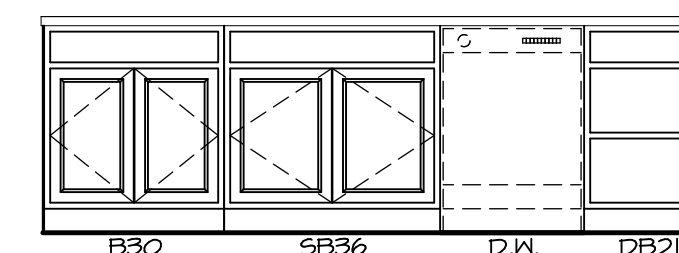
COUNTERTOP PLAN
KC - 2960

SCALE: 3/8" = 1'-0" 2
A-12



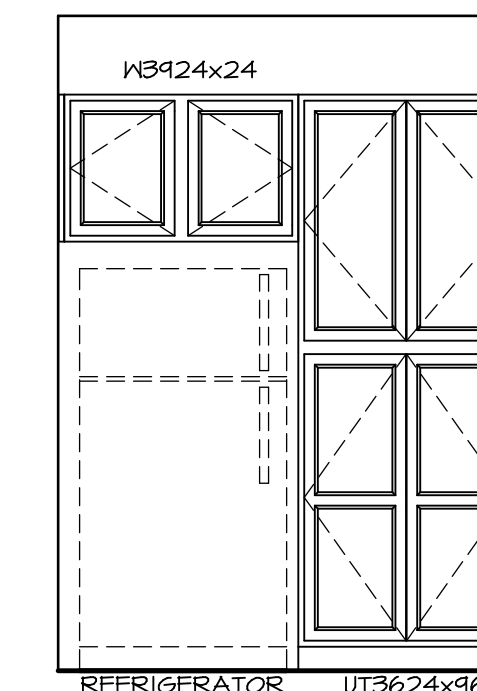
ELEVATION "G"

SCALE: 3/8" = 1'-0" G



ELEVATION "F"

SCALE: 3/8" = 1'-0" F



ELEVATION "C"

SCALE: 3/8" = 1'-0" C

SHEET NO.
A-12

MODEL
LANDON
DRAWING TITLE
KITCHEN PLAN

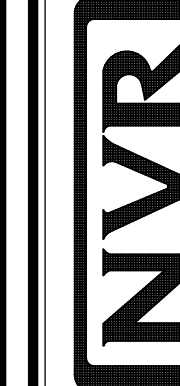
OPTION DESCRIPTION
51

SET NO. LDN00
VERSION 02

DRAWN BY SDTT

DATE: 8/6/15

OPTION



NVR, Inc. Suite 100
5285 Washburne Drive
Frederick, MD 21703

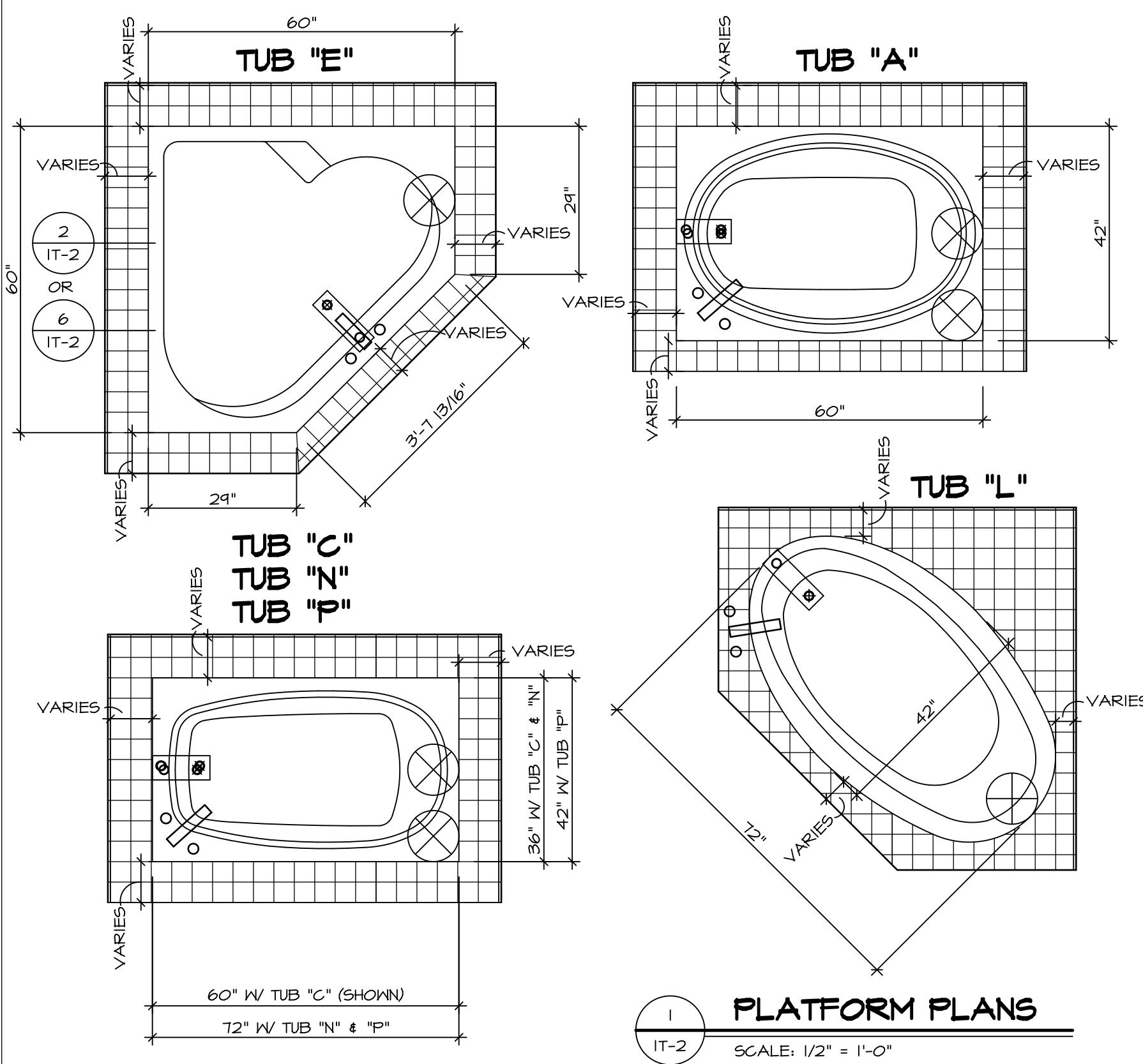
© NVR, Inc. expressly reserves the right to modify or amend these plans at any time without notice. These plans are not to be reproduced, changed or altered in any way without the written consent of NVR, Inc.

DIV-COMM-LOT-UNIT
DCY-CH-S560

COMM-LOT

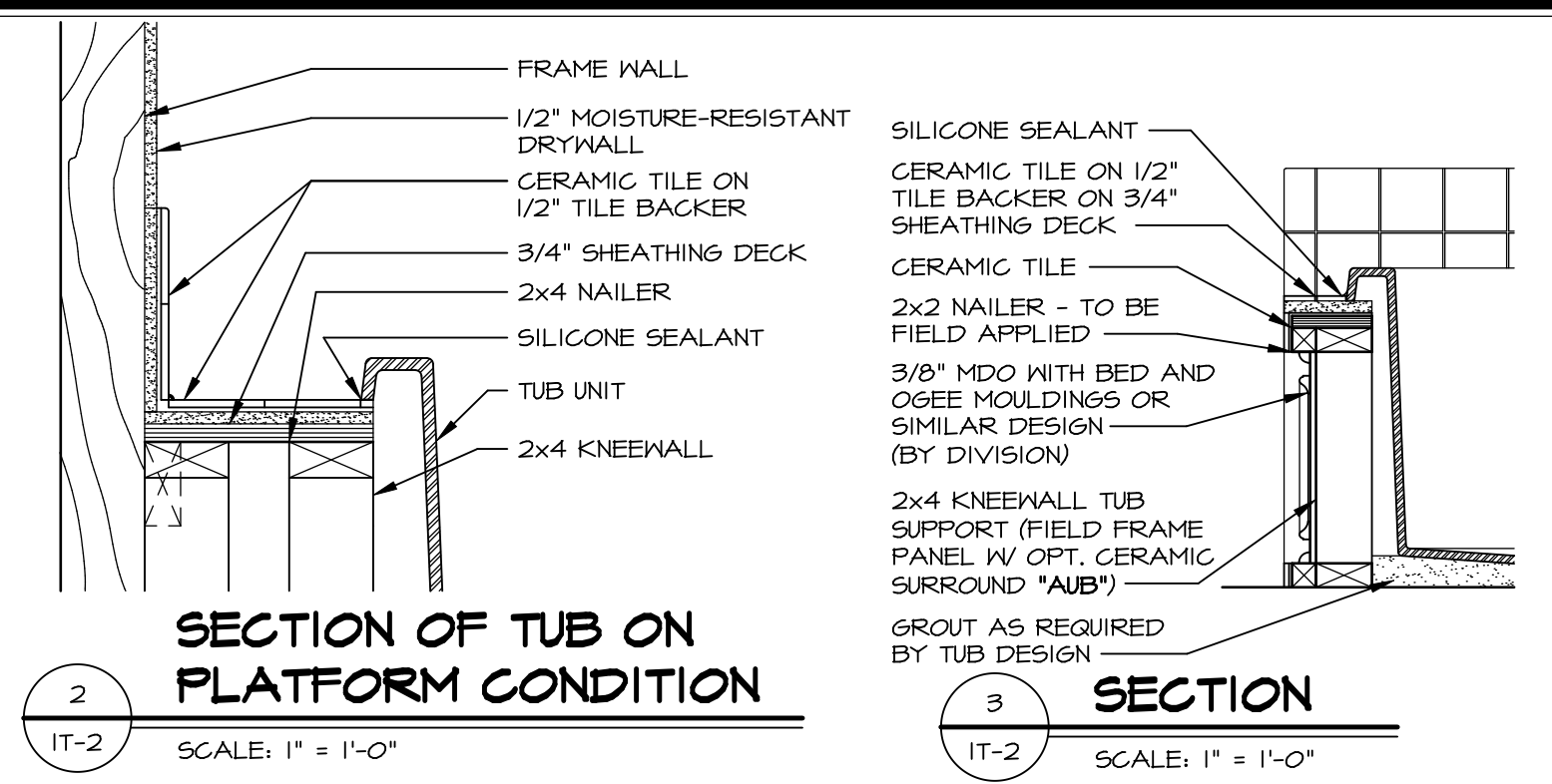
CARRIAGE TRAILS - S560

STREET ADDRESS
APT. NO. ---
CITY STATE OH ZIP
TIPP CITY OH 45371

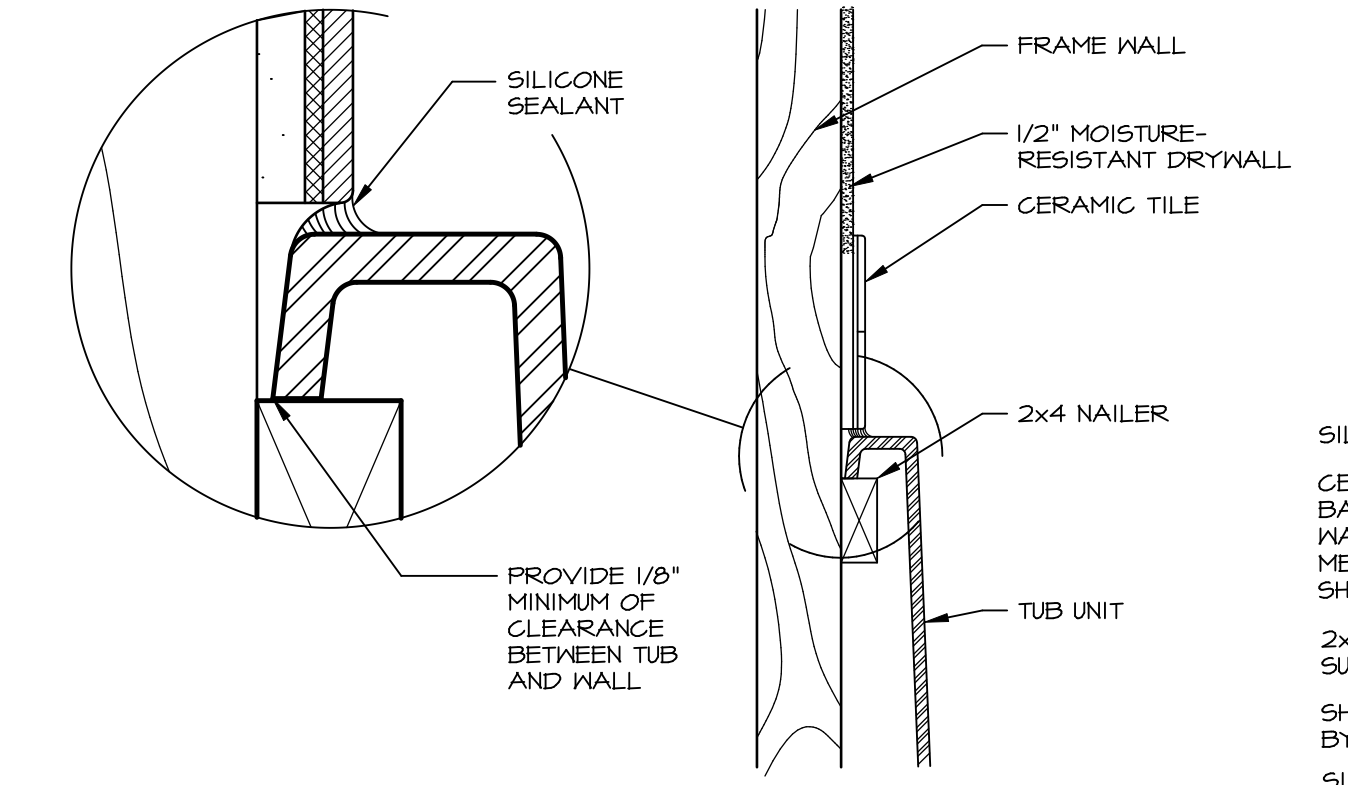


1 PLATFORM PLANS
SCALE: 1/2" = 1'-0"

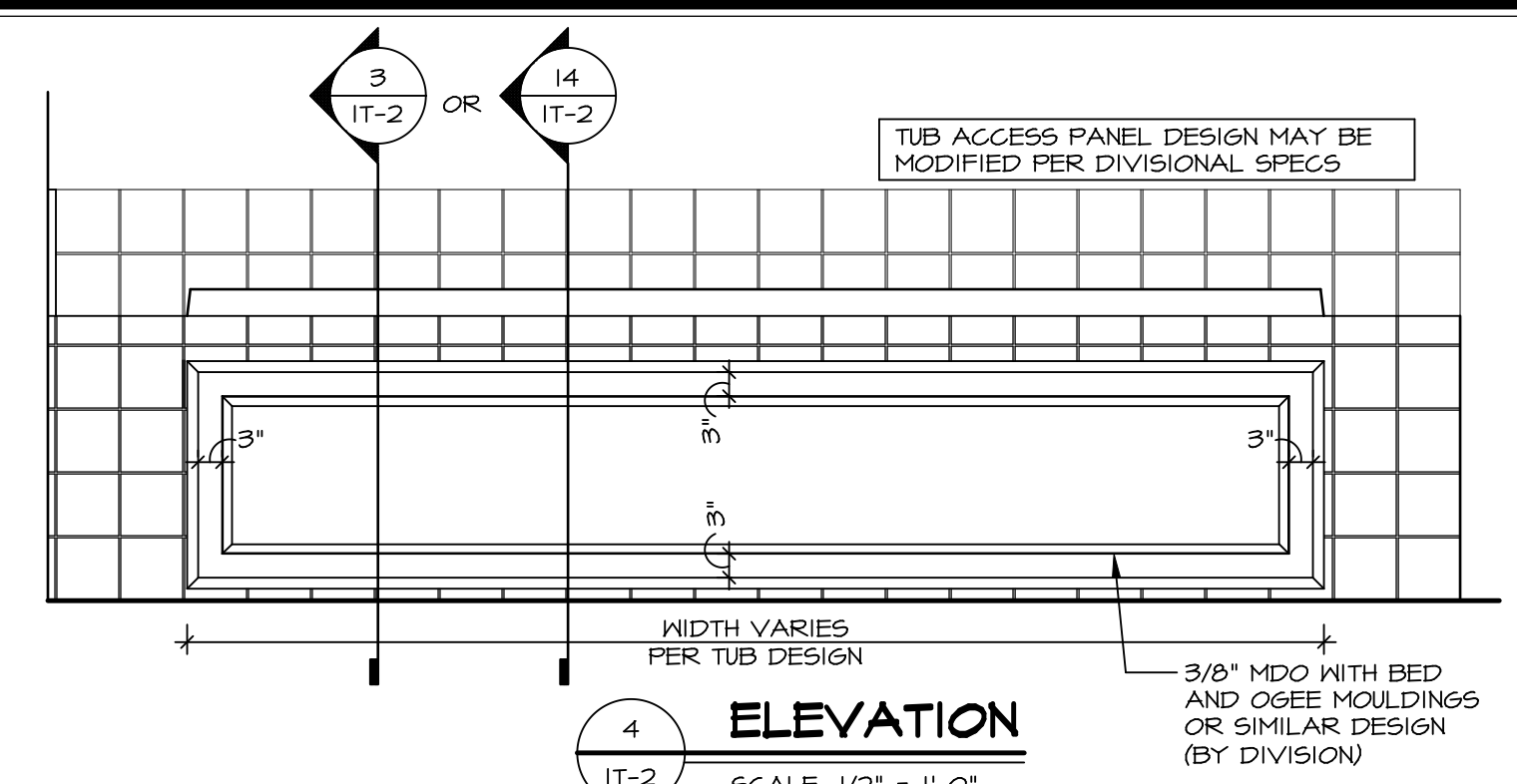
TUB	MANUF.	HEIGHT	WIDTH	LENGTH	TUB DECK PANEL HEIGHT
"A"	KOHLER/STERLING	18 3/4"	42"	60"	17 1/8"
"C"	KOHLER/STERLING	18 3/4"	36"	60"	17 1/8"
"E"	KOHLER/STERLING	19 1/2"	60"	60"	17 7/8"
"L"	KOHLER/STERLING	18 1/2"	42"	72"	16 7/8"
"N"	KOHLER/STERLING	18 3/4"	36"	72"	17 1/8"
"P"	KOHLER/STERLING	18 3/4"	42"	72"	17 1/8"



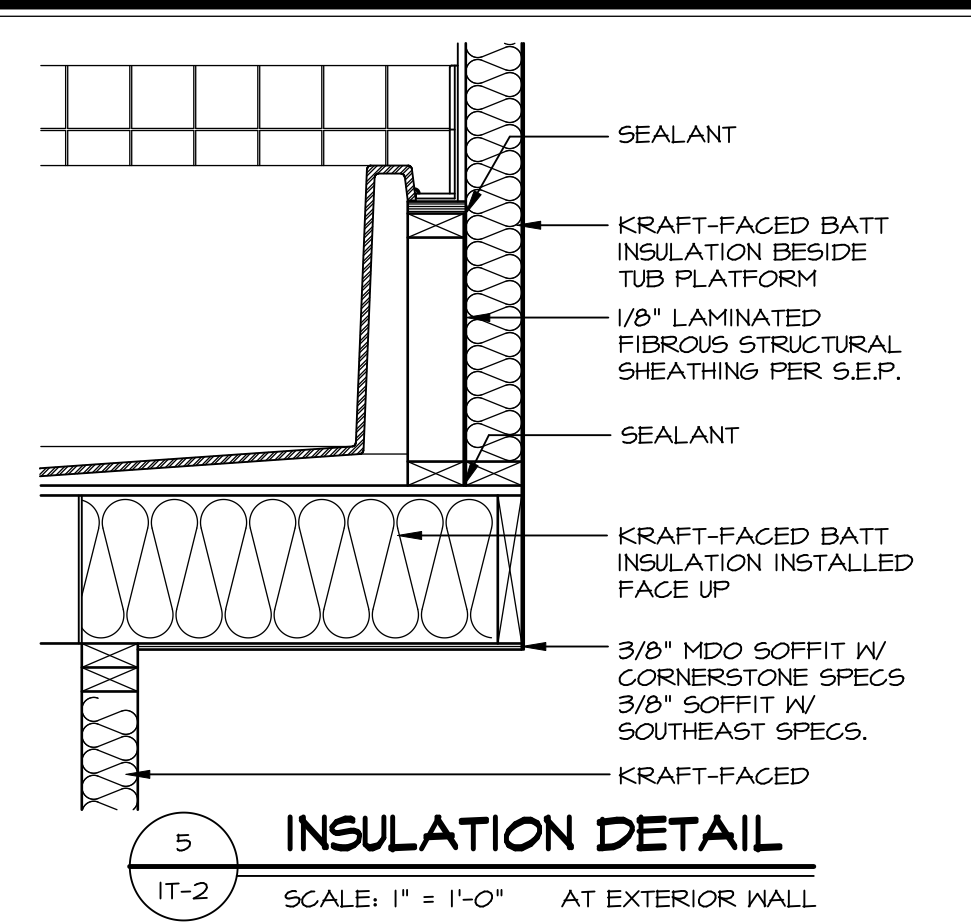
2 SECTION OF TUB ON PLATFORM CONDITION
SCALE: 1" = 1'-0"



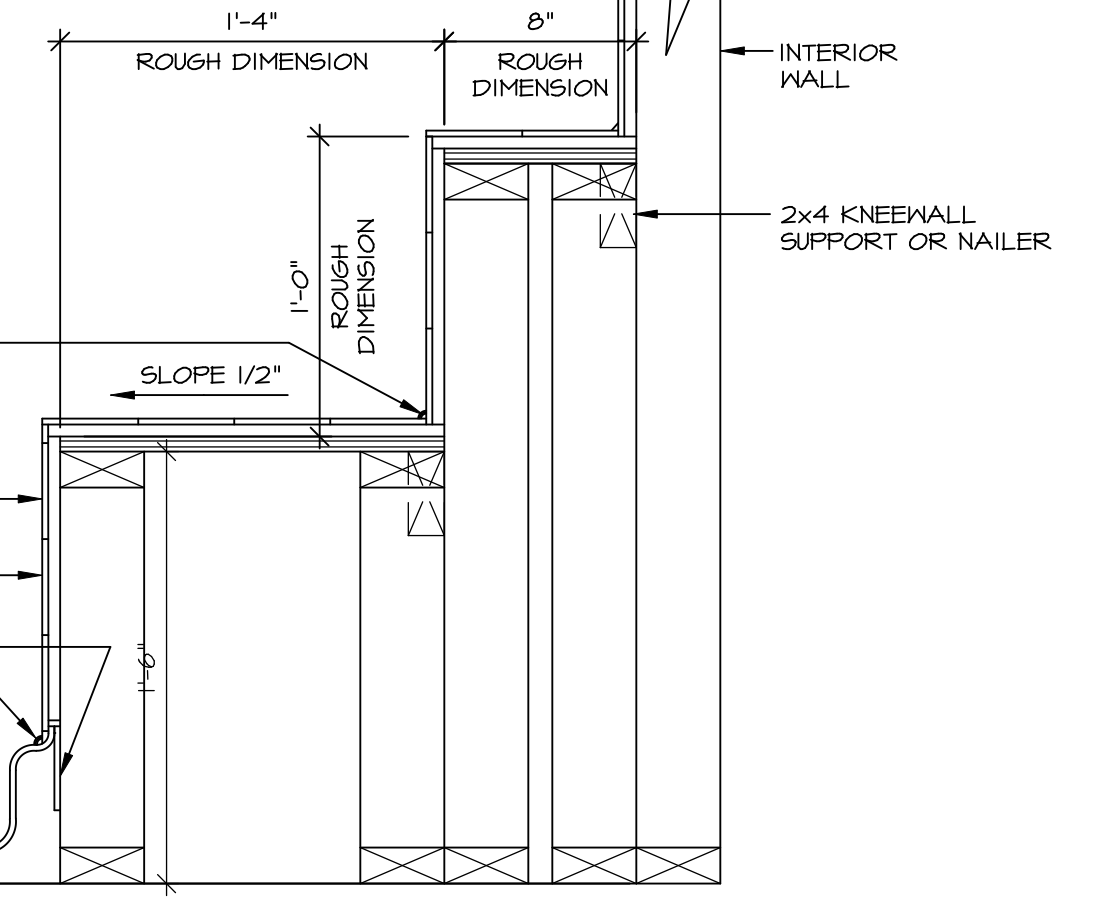
3 SECTION OF TUB TO WALL CONDITION
SCALE: 1 1/2" = 1'-0"



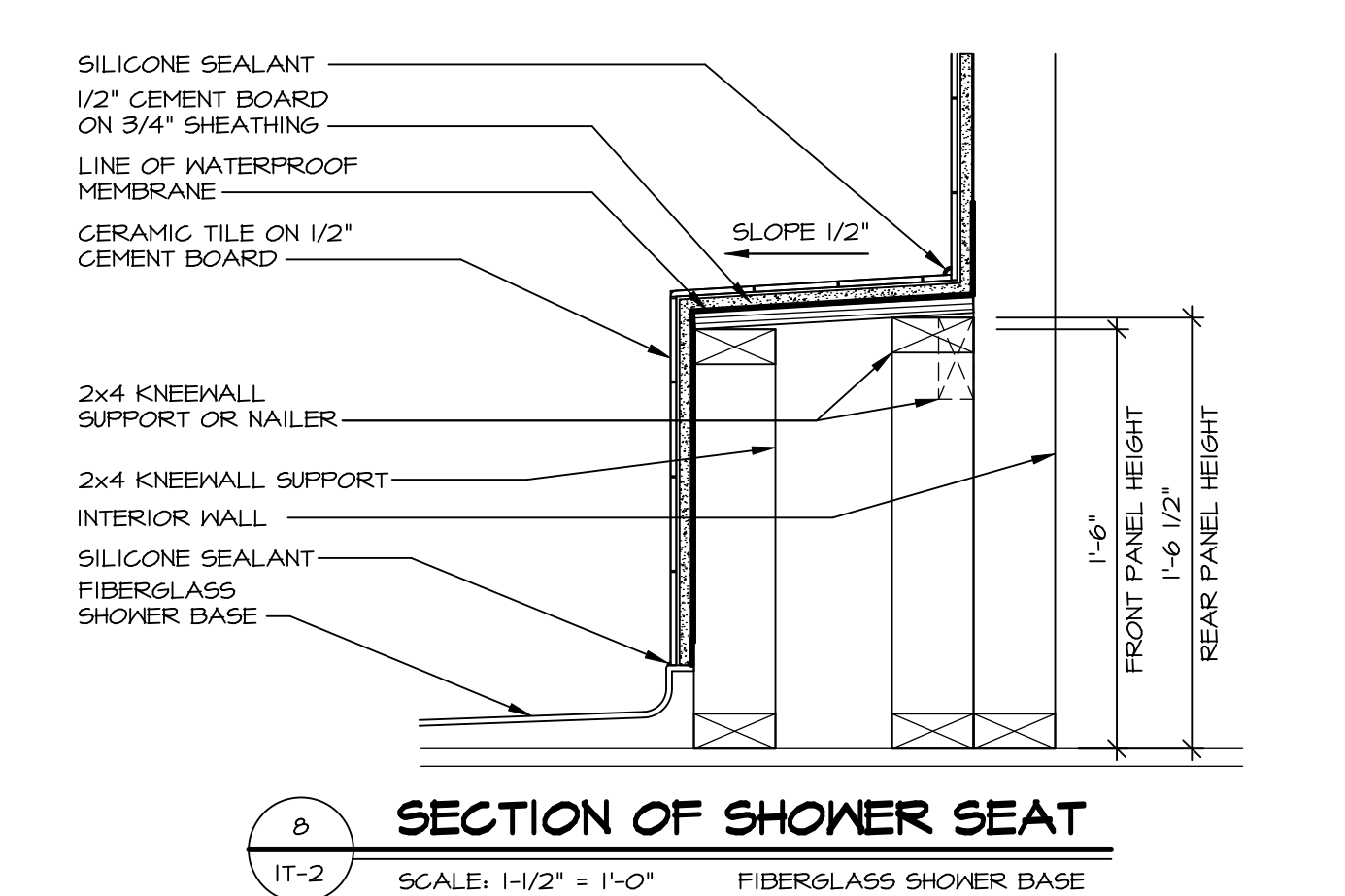
4 ELEVATION
SCALE: 1/2" = 1'-0"



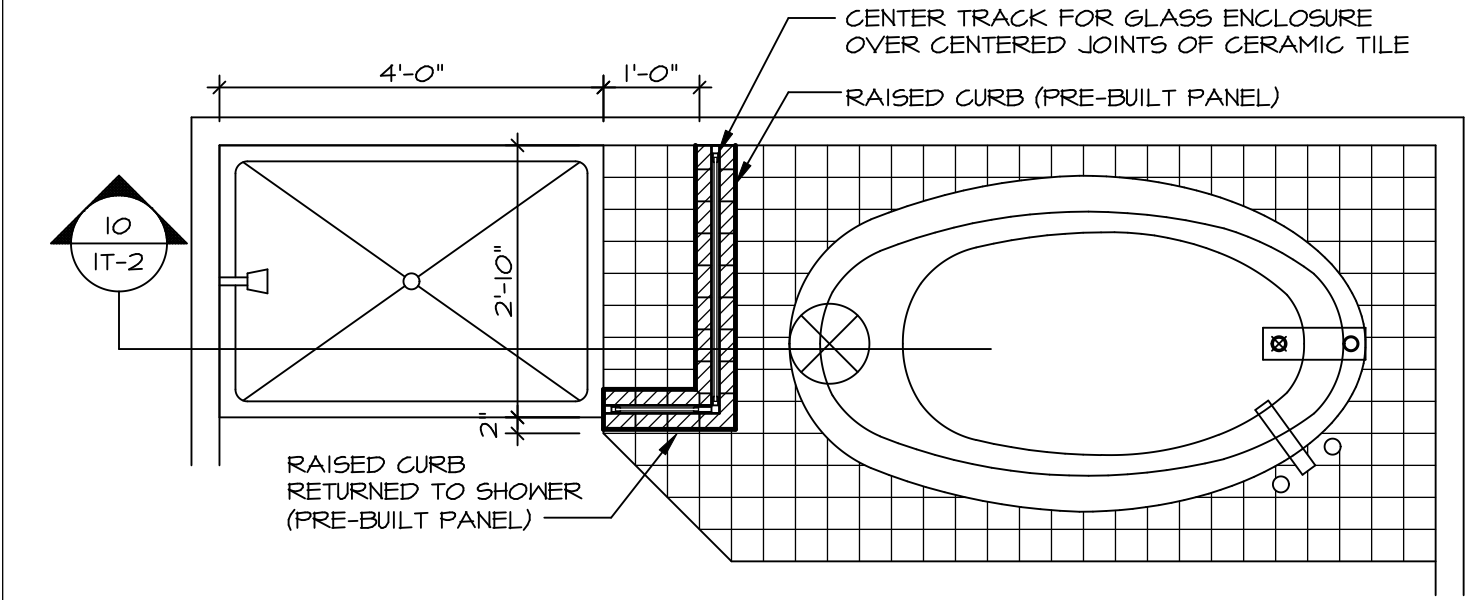
5 INSULATION DETAIL
SCALE: 1" = 1'-0" AT EXTERIOR WALL



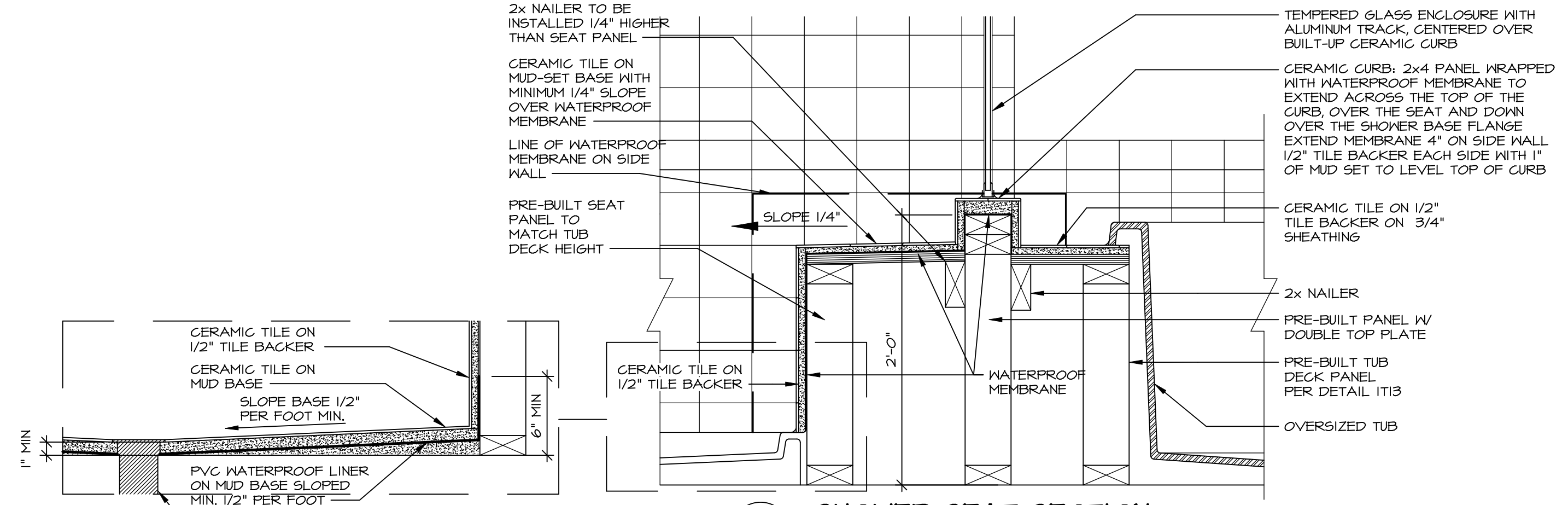
6 SECTION OF SHOWER SEAT AND SHELF
SCALE: 1 1/2" = 1'-0"



7 SECTION OF SHOWER SEAT
SCALE: 1-1/2" = 1'-0" FIBERGLASS SHOWER BASE



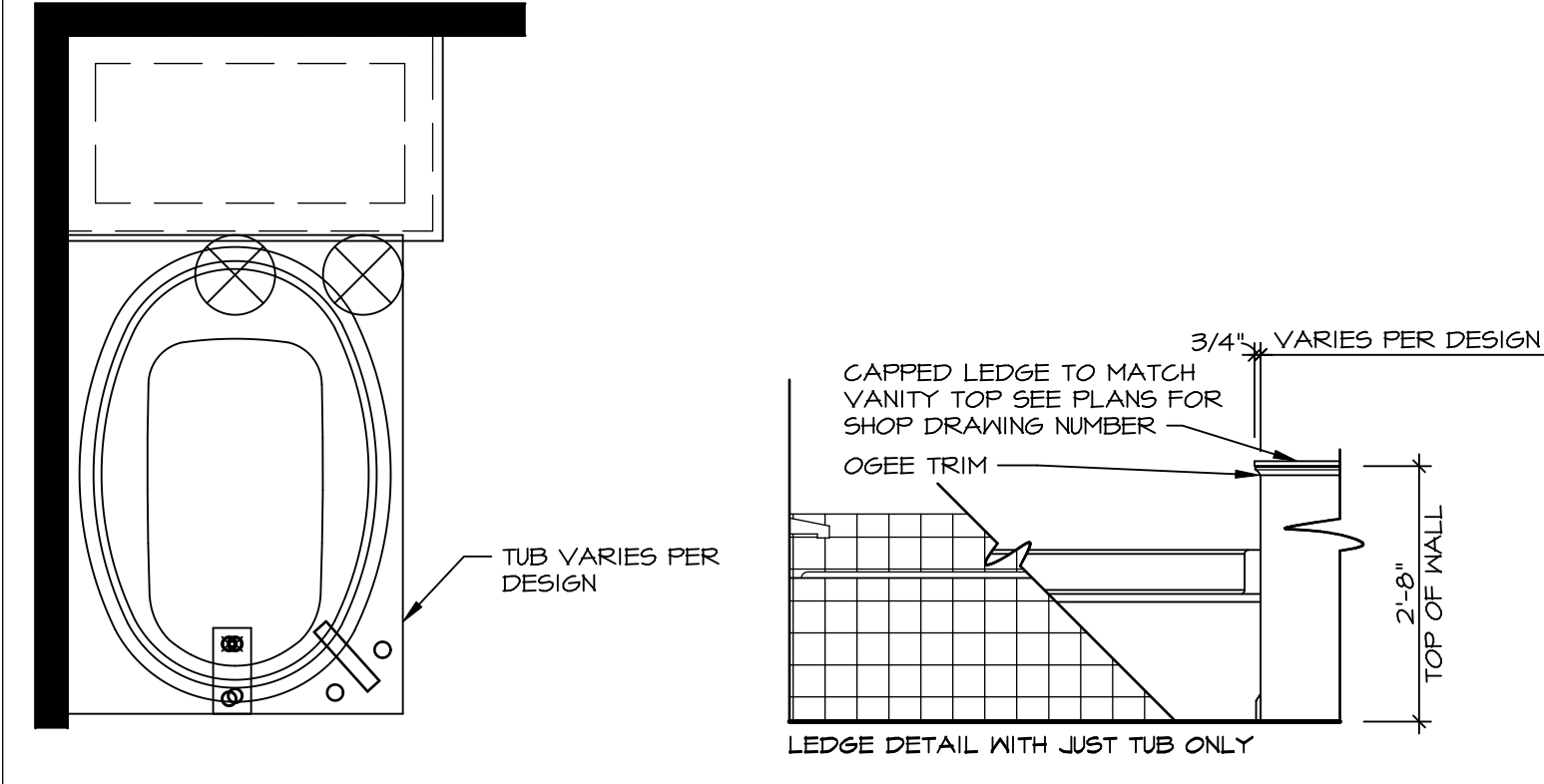
9 SHOWER SEAT PLAN / DETAIL
SCALE: 1/2" = 1'-0"



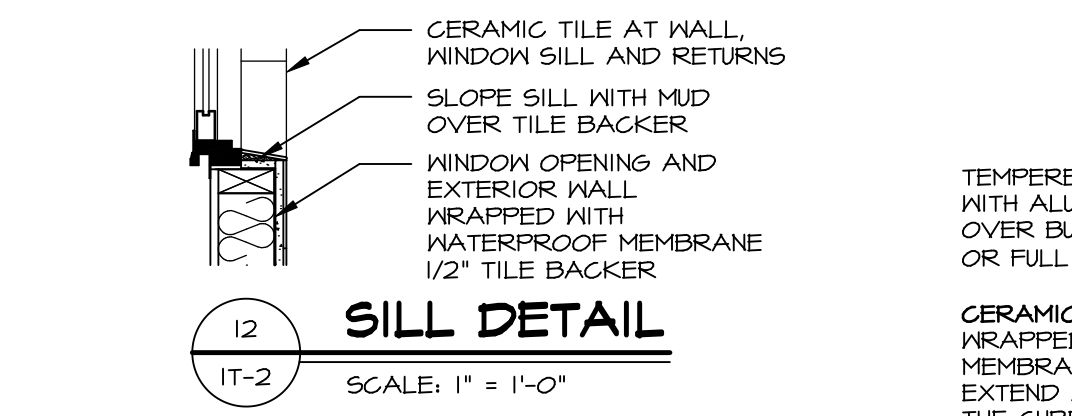
10 SHOWER SEAT SECTION
SCALE: 1-1/2" = 1'-0"



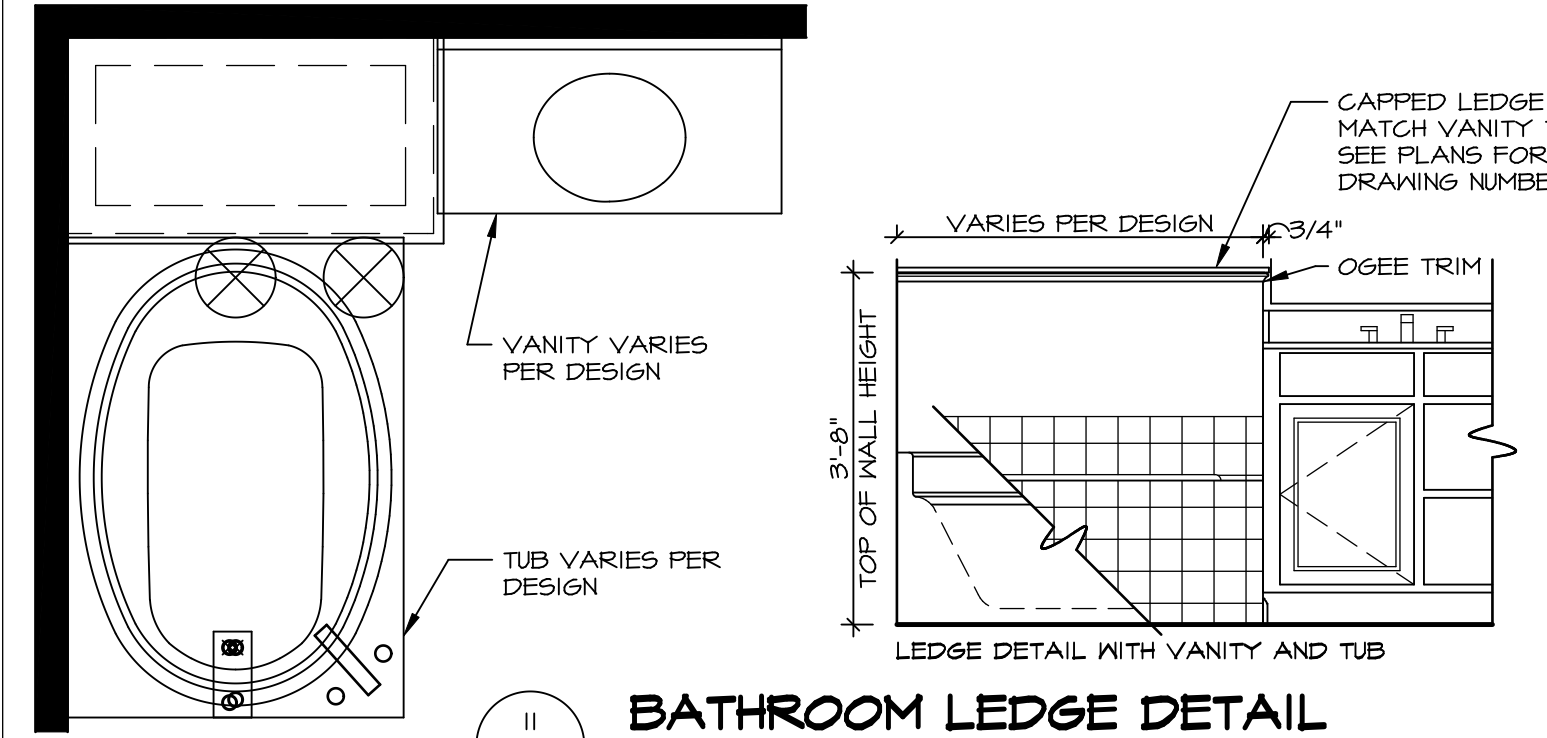
11 ALTERNATE SHOWER PAN DETAIL



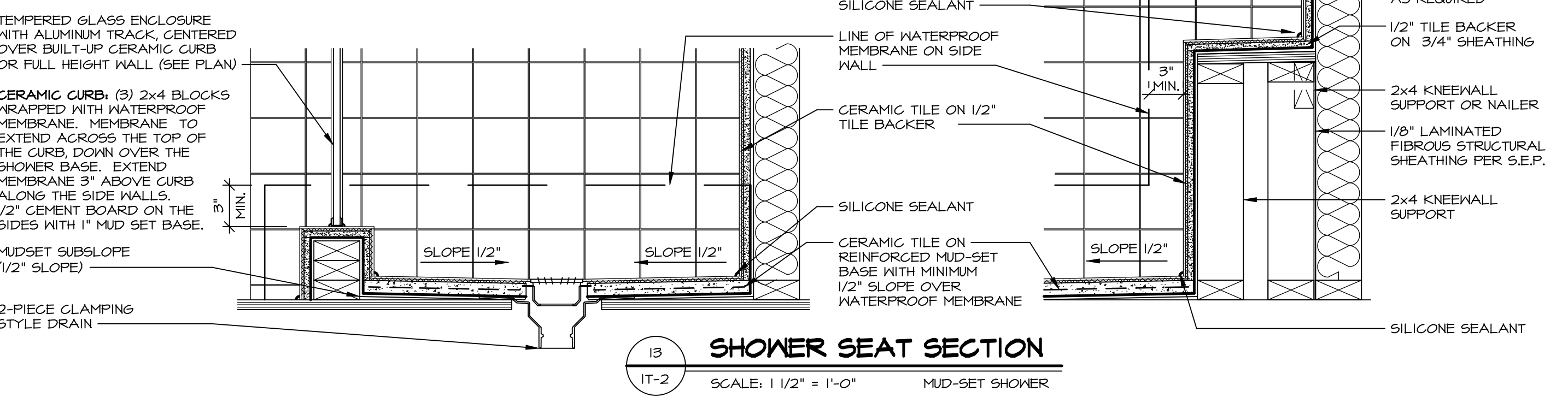
12 BATHROOM LEDGE DETAIL
SCALE: 1/2" = 1'-0"



13 SILL DETAIL
SCALE: 1" = 1'-0"



14 BATHROOM LEDGE DETAIL
SCALE: 1/2" = 1'-0"



15 SHOWER SEAT SECTION
SCALE: 1 1/2" = 1'-0" MUD-SET SHOWER

REMARKS

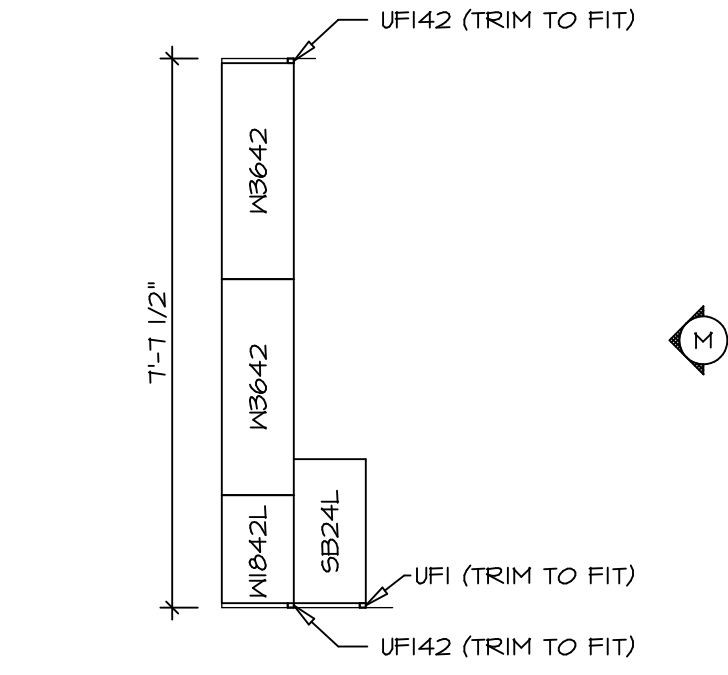
REV. NO.	DATE	DESCRIPTION
1	5/11/17	EBP - REVISED DETAIL I AND II TO REMOVE TUB ACCESS PANEL REF. (095 #15 3/4" x 1/4")
2	9/21/17	EBP - REVISED T-FLY NOTE TO CALL OUT LFS
3	9/21/17	EBP - REVISED NOTE ON DETAIL #1 - REVISED ORDER OF MATERIAL PARA#49304
4	8/28/18	EBP - DTL 8 / 19 ME REMOVED THE 2x6 BULKING AT BASE OF SHWR REQUEST #4663

NVR, Inc., owner, expressly reserves its common law copyright and other property rights in these plans. These plans are not to be copied, reproduced, or otherwise used in any way without the prior written consent of NVR, Inc.

NVR
Architectural Services
5285 Westpark Drive
Frederick, MD 21703

SET NO.	MODEL	DRAWING TITLE	OPTION
1	STANDARD DETAILS	INTERIOR TRIM DETAILS	
2	BATH DETAILS	BATH DETAILS	
3	OPTION DESCRIPTION		

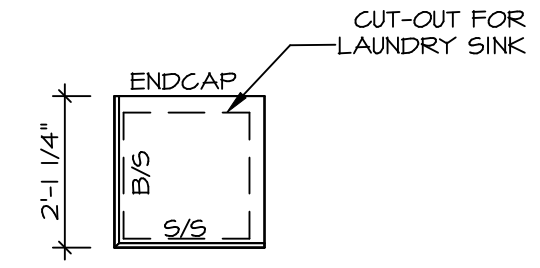
SHEET NO. **IT-2**



CABINET PLAN
KC - 2964

SCALE: 3/8" = 1'-0"

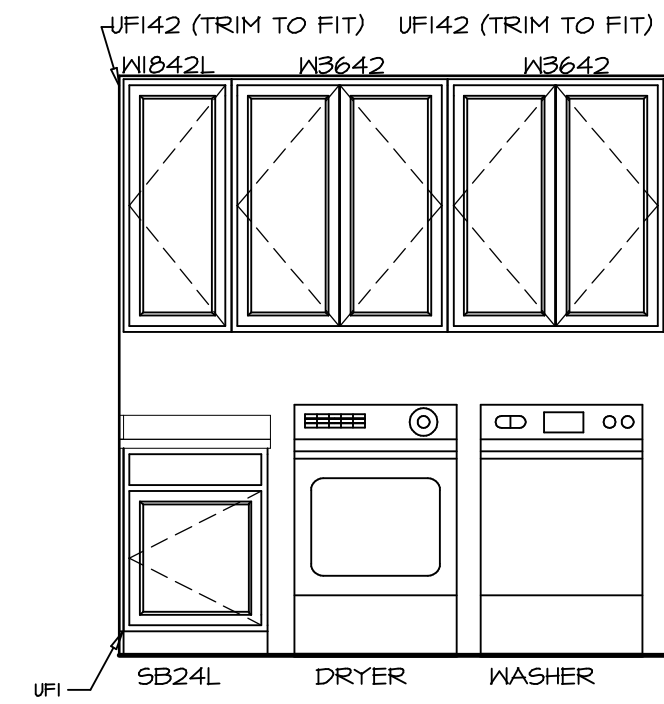
1
A-12b



COUNTERTOP PLAN
KC - 2964

SCALE: 3/8" = 1'-0"

2
A-12b



ELEVATION "M"

SCALE: 3/8" = 1'-0"

M

SHEET NO.
A-12b

MODEL
LANDON
DRAWING TITLE
KITCHEN PLAN - ADDITIONAL CABINETS
OPTION DESCRIPTION

52

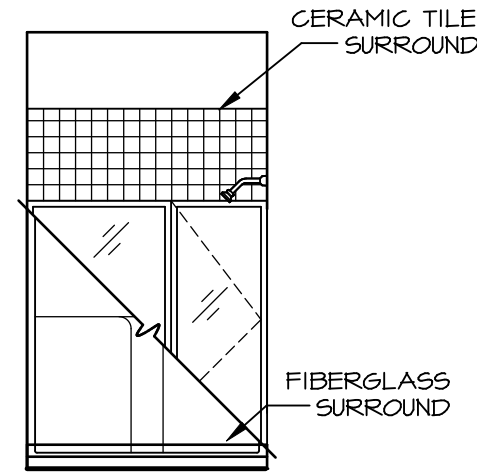
SET NO. LDN00
VERSION 02
DRAWN BY SDTT
DATE: 8/6/15
OPTION



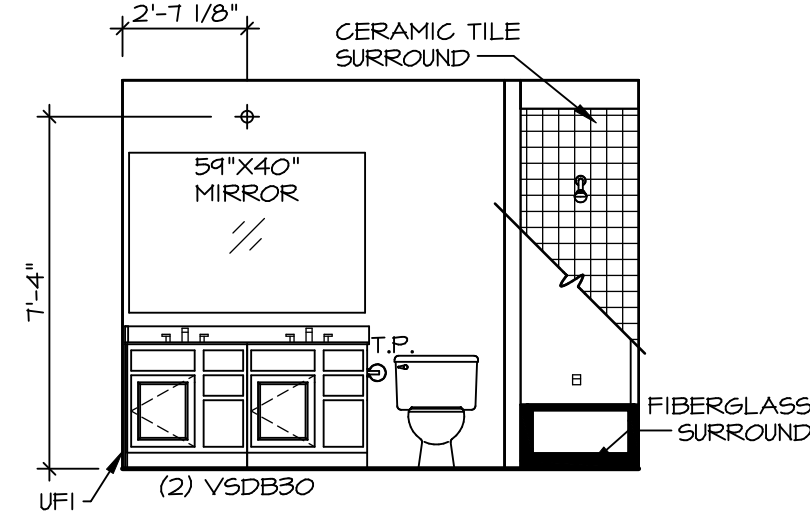
© NVR, Inc. expressly reserves the right to modify or change the design of the products shown in these plans. These plans are not to be reproduced, changed or altered in any way without the written consent of NVR, Inc.

DIV-COMM-LOT-UNIT
DCY-CH-S560
COMM-LOT
CARRIAGE TRAILS - S560
STREET ADDRESS
5123 WHITE ASH DRIVE
CITY
TIFF CITY
STATE
OH
ZIP
45371

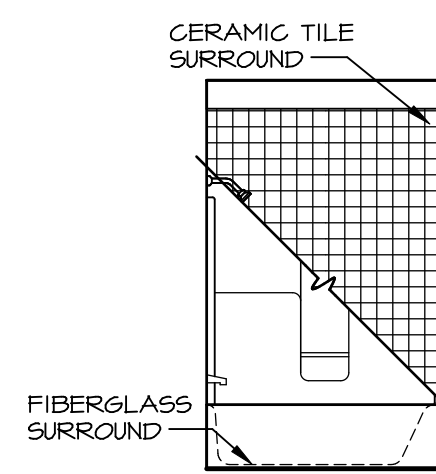
APT. NO. -----



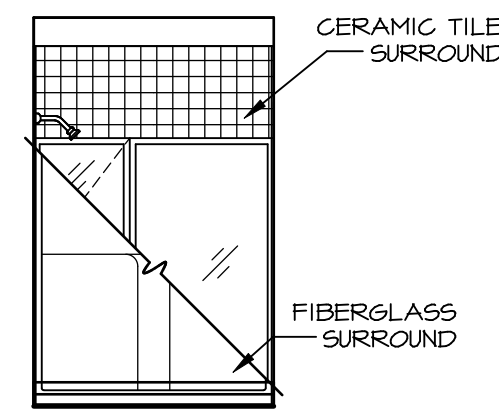
E FIRST FLOOR BATH
SCALE: 1/4" = 1'-0"



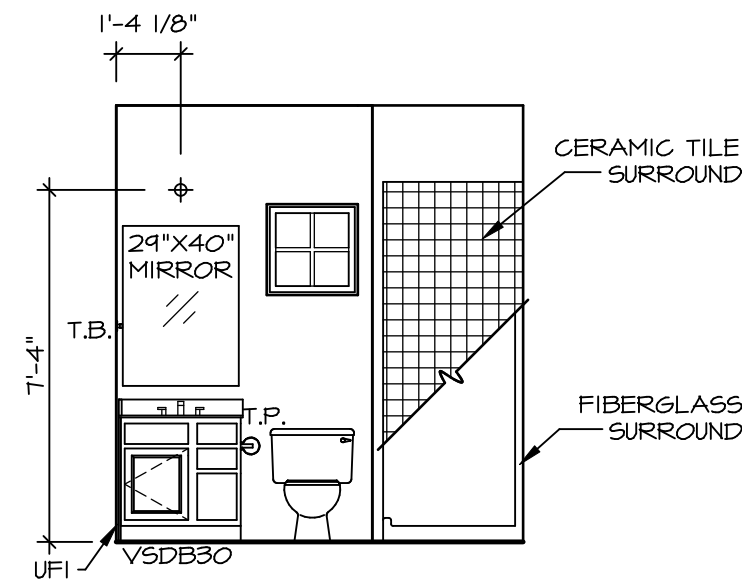
F BATH #1
SCALE: 1/4" = 1'-0"



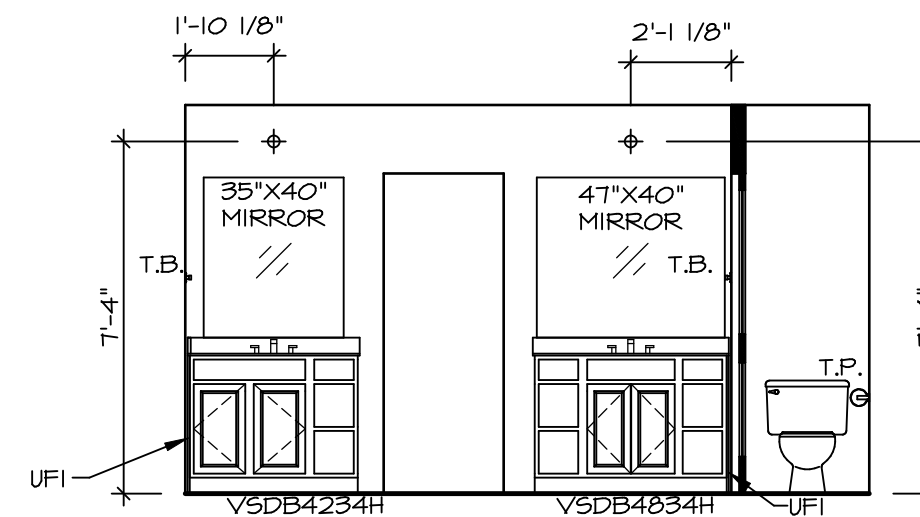
G BATH #1
SCALE: 1/4" = 1'-0"



L OWNERS BATH
SCALE: 1/4" = 1'-0"



D FIRST FLOOR BATH
SCALE: 1/4" = 1'-0"



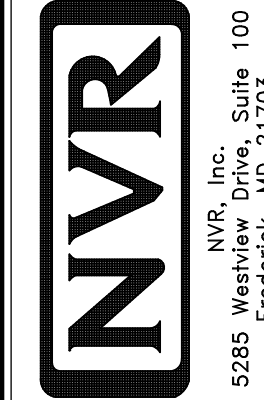
M OWNER'S BATH
SCALE: 1/4" = 1'-0"

NOTES:

1. TEMPERED GLASS SHOWER ENCLOSURE WITH SWING DOOR OR OPTIONAL SLIDING DOOR BY DIVISION
2. TUB ACCESS PANELS PROVIDED AS NEEDED, ALL MATERIALS BY DIVISION
3. REFER TO SHEET IT-2 FOR TUB AND SHOWER DETAILS.
4. ALL VSDB24-42 DRAWERS TO BE SET ON RIGHT HAND.
5. BATH ELEVATIONS ARE SHOWN PER PLAN.

SHEET NO. **A-13**
MODEL **LANDON**
DRAWING TITLE **BATH ELEVATIONS**
OPTION DESCRIPTION

SET NO. **LDN00**
VERSION **02**
DRAWN BY **SDTT**
DATE: **7/30/15**
OPTION



© NVR, Inc. All rights reserved. The information contained herein is for the use of the client only. It is not to be reproduced, changed or used in any way without the written consent of NVR, Inc.

DIV-COMM-LOT-UNIT **DCY-CH-S560**
COMM-LOT
STREET ADDRESS **CARRIAGE TRAILS - S560**
CITY **TIPP** STATE **OH** ZIP **45971**
STREET ADDRESS **5123 WHITE ASH DRIVE**
CITY **TIPP** STATE **OH** ZIP **45971**