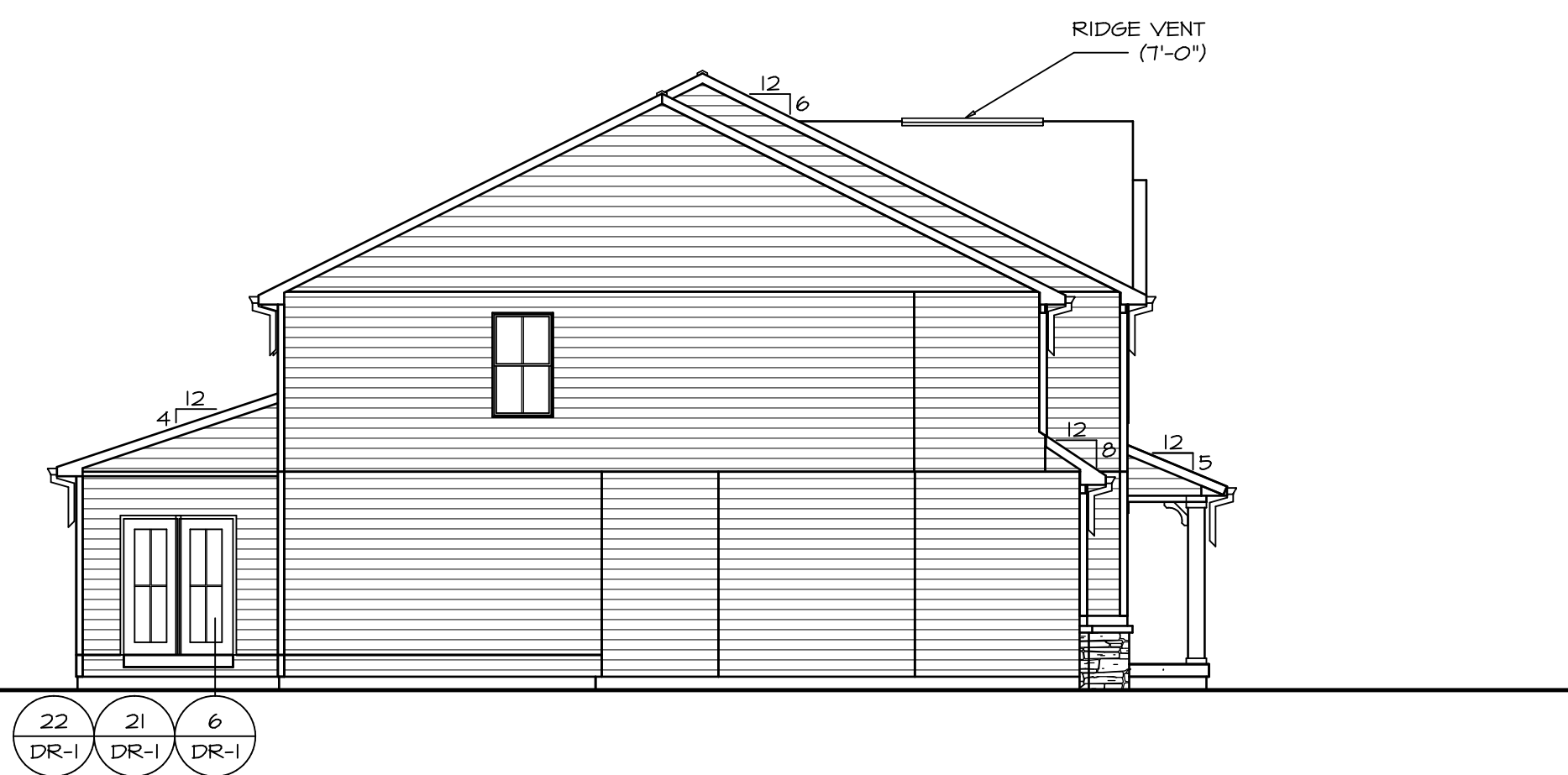
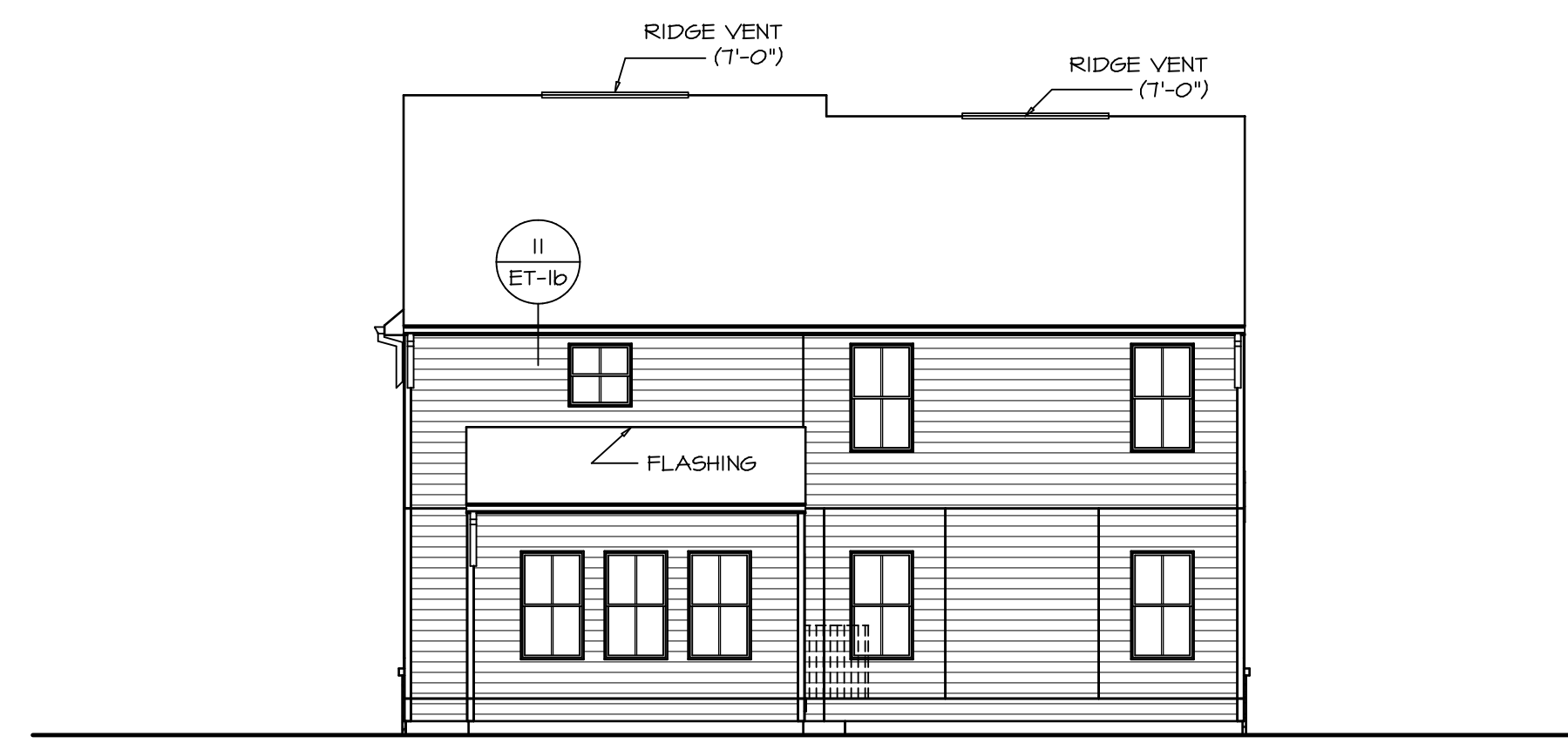


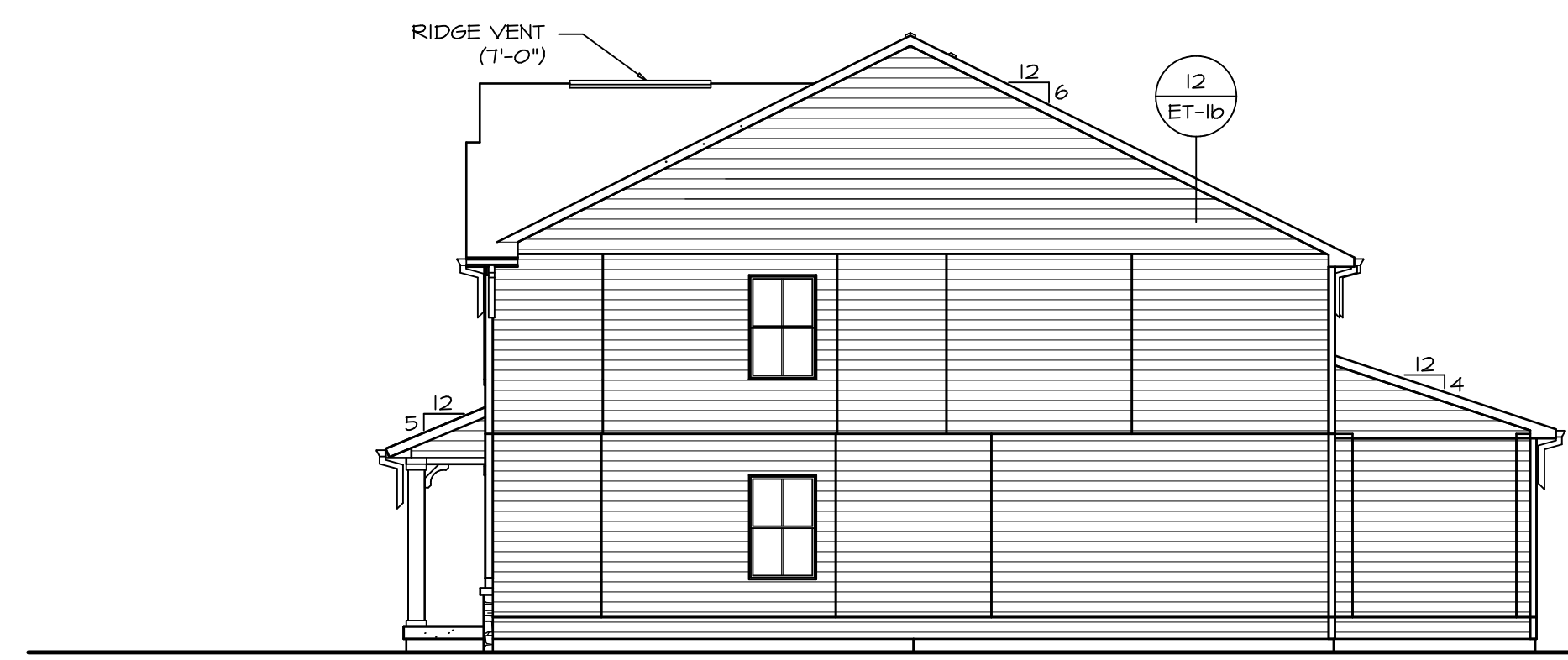
FRONT ELEVATION "L"
 SCALE: 1/4" = 1'-0"
 1
 A-1



4 LEFT ELEVATION
 SCALE: 1/8" = 1'-0"
 22
 21
 6
 DR-1
 DR-1
 DR-1



3 REAR ELEVATION
 SCALE: 1/8" = 1'-0"
 3
 A-1



2 RIGHT ELEVATION
 SCALE: 1/8" = 1'-0"
 2
 A-1

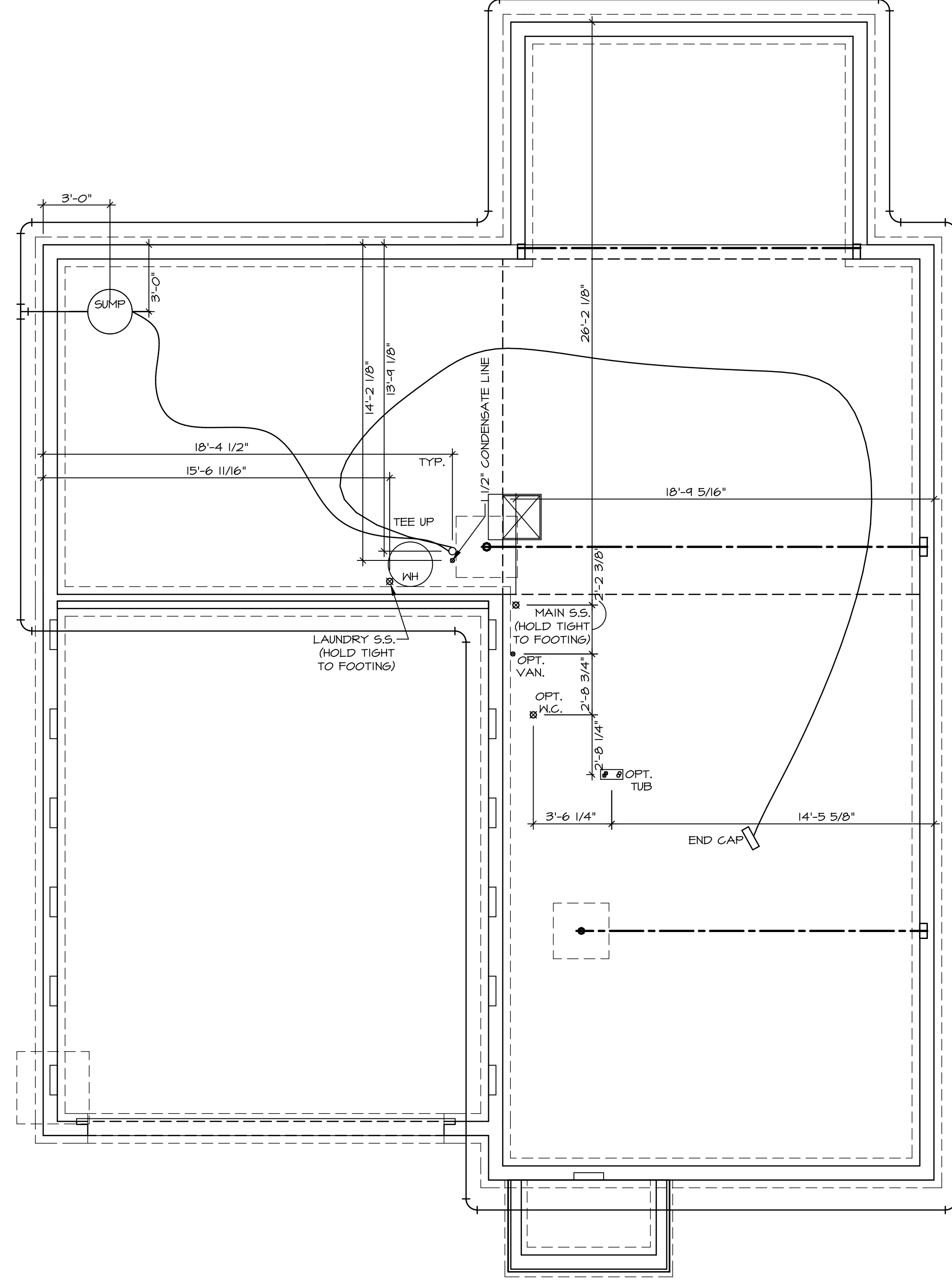
REV. NO.	DATE	REMARKS

NVR, Inc., owner, expressly reserves its copyright in these plans. These plans are not to be reproduced, changed, copied, or otherwise used without the written consent of NVR, Inc.
--

NVR NVR, Inc. Architectural Services Architects Suite 100 5285 Westpark Drive Frederick, MD 21703	SET NO. NAPOO VERSION 06 DRAWN BY TN DATE: 05/22/15 OPTION FEA
--	--

MODEL NAPLES DRAWING TITLE ELEVATIONS OPTION DESCRIPTION FULL BASEMENT FOUNDATION	SHEET NO. A-1 6
--	------------------------------

C:\NVR\Solves\NAPLES_NAPOO_06\DC7-CH-2273\906111\SheetA Lot Specific\6 A-1 ELEV.LS (FBA).dwg 08/16/19 - 3:04 am



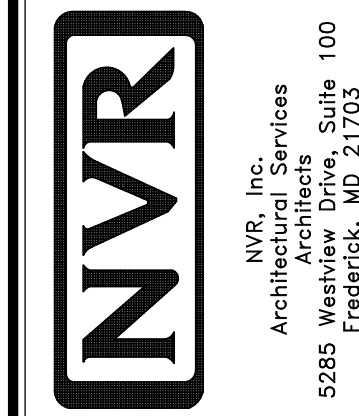
PLUMBING PLAN
SCALE: 1/4" = 1'-0"

SHEET NO.
A-5

MODEL
NAPLES
DRAWING TITLE
PLUMBING PLAN
OPTION DESCRIPTION

28

SET NO. **NAPOO**
VERSION **06**
DRAWN BY **TN**
DATE: **05/22/15**
OPTION



NVR, Inc., owner, expressly reserves its copyright in these plans. These plans are not to be reproduced, changed, copied, or otherwise used without the prior written consent of NVR, Inc.

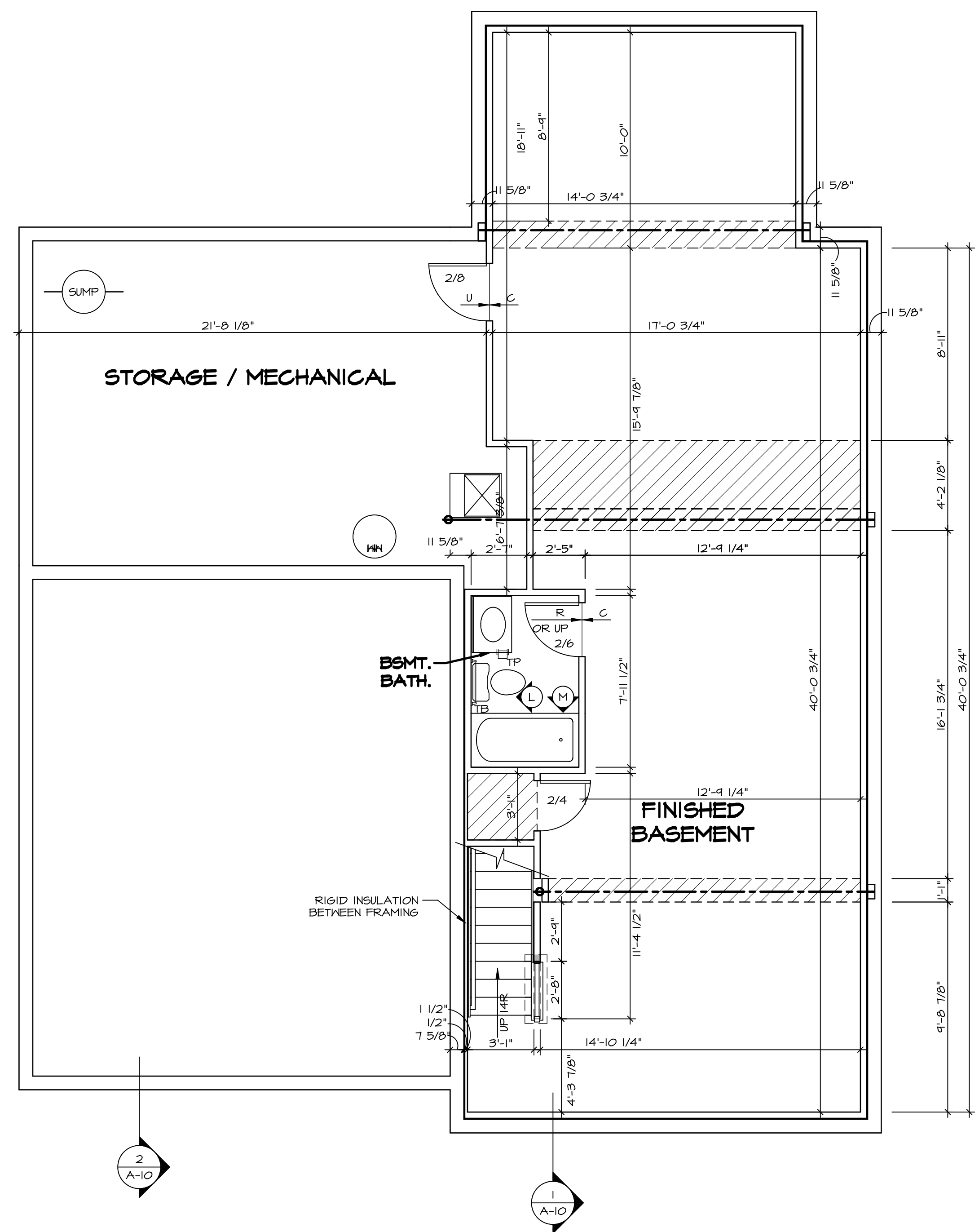
REV. NO. | DATE

REMARKS

LEGEND	
	BEARING WALL
	NON BEARING WALL
	INDICATES BEARING FROM POINT-LOAD ABOVE
	JACKS
	BEAM/HEADER
	PAD FOOTING
	STEEL COLUMN
	PORTAL FRAME
	JOIST/TRUSS
	LVL
	ENGINEERING PAGE NUMBER
SEE FC DETAILS FOR FRAMING CONNECTORS	

- FLOOR PLAN NOTES**
- ALL HEADERS ARE (2) 2x6 w/ 2x4 WALLS OR (3) 2x6 w/ 2x6 WALLS, UNLESS OTHERWISE NOTED.
 - ALL HEADERS TO HAVE (1) 2x4 OR 2x6 JACK EACH END, UNLESS OTHERWISE NOTED.
 - ALL EXTERIOR WALLS TO BE 4" AND ALL INTERIOR WALLS TO BE 3 1/2", UNLESS OTHERWISE NOTED.
 - HATCHED AREAS INDICATE DROPPED CEILING. ALL DROPPED CEILING ARE 12" UNLESS OTHERWISE NOTED.
 - SEE "BRACED WALL PANEL DETAIL SHEET" FOR SPECIAL WALL FRAMING LOCATIONS AND HEADER SIZES, IF APPLICABLE.
 - SEE STANDARD DETAIL CATEGORY "IT" SHEET(S) FOR INTERIOR TRIM DETAILS.
 - SEE ARCHITECTURAL DETAIL SHEET "AD" FOR HOUSE SPECIFIC INTERIOR TRIM OPTION TABLE.
 - ALL WINDOWS HAVE 1'-0 1/2" HEADER HEIGHT UNLESS OTHERWISE NOTED.

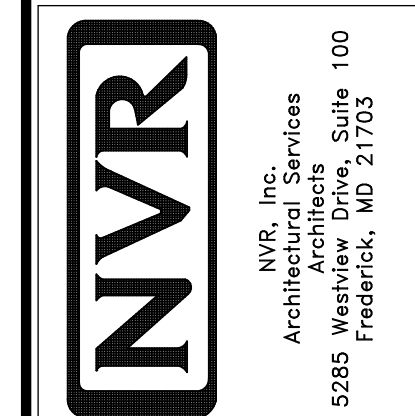
- GYPSUM NOTES**
- AT GARAGE:
 GYPSUM BOARD AT COMMON WALLS, CEILING, BEAM WRAPS AND SUPPORTS PER STANDARD DETAIL FA-1(b) FIRE ASSEMBLIES OR AS REQUIRED BY LOCAL CODE.
- AT STAIRS:
 1/2" GYPSUM BOARD AT UNDERSIDE OF STAIRS AND WALLS IN CLOSET



BASEMENT FLOOR PLAN
 SCALE: 1/4" = 1'-0"

SHEET NO.	MODEL	SET NO.	VERSION	DRAWING TITLE	OPTION DESCRIPTION	DATE	REVISIONS	REMARKS
A-6	NAPLES	06	06	BASEMENT FLOOR PLAN		05/22/15		
31								

NVR, Inc., owner, expressly reserves its copyright in these plans. These plans are not to be reproduced, changed, copied, or otherwise used in any way without the written consent of NVR, Inc.



LEGEND

- BEARING WALL
- NON BEARING WALL
- INDICATES BEARING FROM POINT-LOAD ABOVE JACKS
- BEAM/HEADER
- PAD FOOTINGS
- STEEL COLUMN
- PORTAL FRAME
- JOIST/TRUSS
- LVL
- ENGINEERING PAGE NUMBER

SEE FG DETAILS FOR FRAMING CONNECTORS

- FLOOR PLAN NOTES**
1. ALL HEADERS ARE (2) 2x6 w/ 2x4 WALLS OR (3) 2x6 w/ 2x6 WALLS, UNLESS OTHERWISE NOTED.
 2. ALL HEADERS TO HAVE (1) 2x4 OR 2x6 JACK AND KING STUD EACH END, UNLESS OTHERWISE NOTED.
 3. ALL EXTERIOR WALLS TO BE 4" w/ OSB OR 3 1/2" w/ T-PLY, ALL INTERIOR WALLS TO BE 3 1/2", UNLESS OTHERWISE NOTED.
 4. HATCHED AREAS INDICATE DROPPED CEILING. ALL DROPPED CEILING ARE 12" UNLESS OTHERWISE NOTED.
 5. SEE "BRACED WALL PANEL DETAIL SHEET" FOR SPECIAL WALL FRAMING LOCATIONS AND HEADER SIZES, IF APPLICABLE.
 6. SEE STANDARD DETAIL CATEGORY "IT" SHEET(S) FOR INTERIOR TRIM DETAILS.
 7. SEE ARCHITECTURAL DETAIL SHEET "AD" FOR HOUSE SPECIFIC INTERIOR TRIM OPTION TABLE.
 8. ALL WINDOWS HAVE 7'-0 1/2" HEADER HEIGHT UNLESS OTHERWISE NOTED.
 9. ALL HEADERS IN NON-BEARING WALLS SHALL BE A SINGLE FLAT 2x4 OR 2x6 ATTACHED TO GRIFFLES ABOVE, UNLESS OTHERWISE NOTED.

- GYPSUM NOTES**
- AT GARAGE:
GYPSUM BOARD AT COMMON WALLS, CEILING, BEAM WRAPS AND SUPPORTS PER STANDARD DETAIL FA-(b) FIRE ASSEMBLIES OR AS REQUIRED BY LOCAL CODE.
- AT STAIRS:
1/2" GYPSUM BOARD AT UNDERSIDE OF STAIRS AND WALLS IN CLOSET

LVL PLY TO PLY FASTENING SCHEDULE:

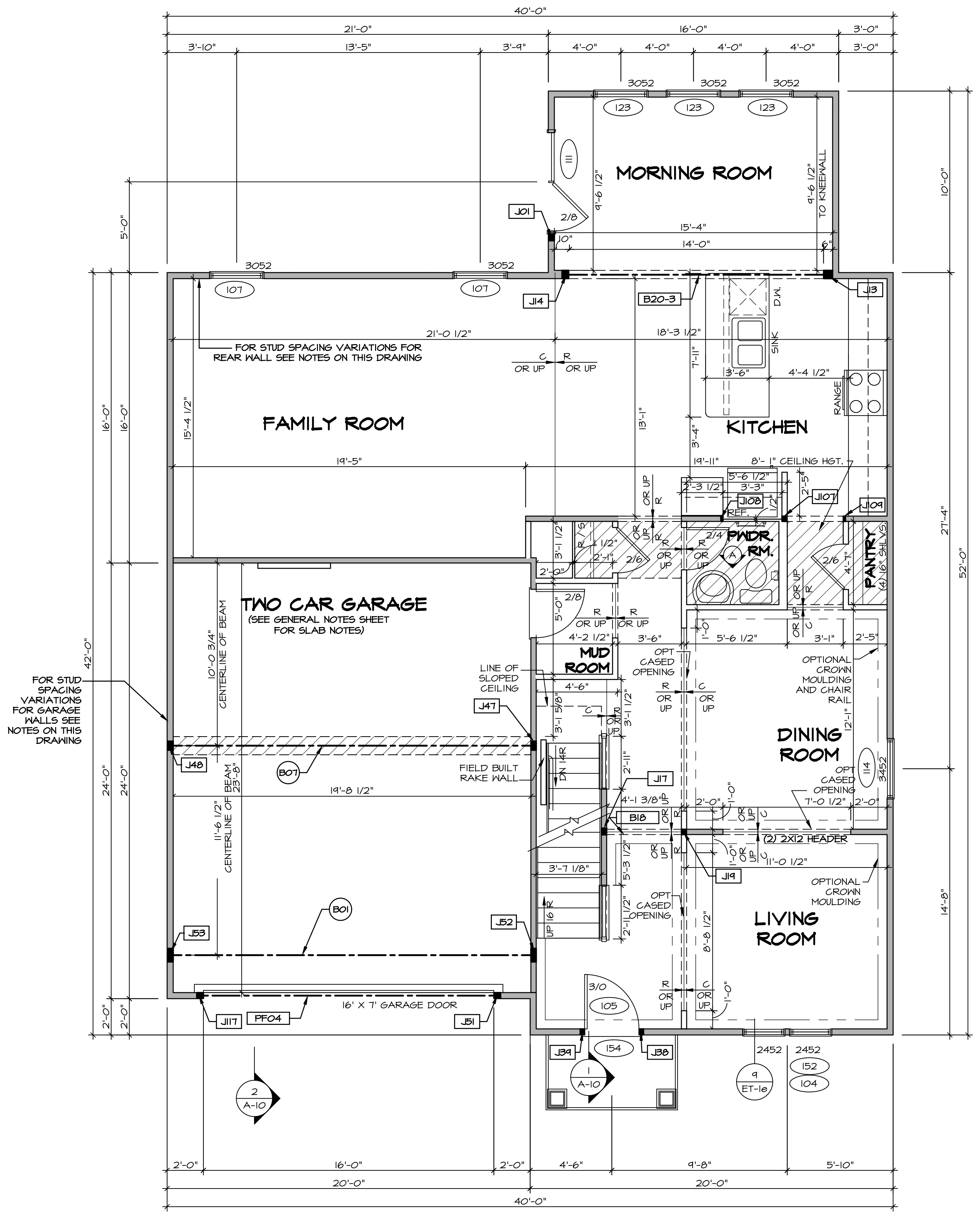
- 1.A - (2) PLY UP TO AND INCLUDING 11 7/8" TALL; FASTEN PLYS W/ (2) ROWS 16D NAILS AT 12" O.C.
- 2.A - (2) PLY 14" TO AND 18" TALL (INCLUSIVE); FASTEN PLYS W/ (3) ROWS 16D NAILS AT 12" O.C.
- 3.A - (2) PLY 20" TALL AND OVER; FASTEN PLYS W/ (4) ROWS 16D NAILS AT 12" O.C.
- 4.A - (3) PLY UP TO AND INCLUDING 11 7/8" TALL; FASTEN PLYS W/ (2) ROWS 16D NAILS AT 12" O.C. FROM EACH SIDE
- 5.A - (3) PLY 14" TO AND 18" TALL (INCLUSIVE); FASTEN PLYS W/ (3) ROWS 16D NAILS AT 12" O.C. FROM EACH SIDE
- 6.A - (3) PLY 20" TALL AND OVER; FASTEN PLYS W/ (4) ROWS 16D NAILS AT 12" O.C. FROM EACH SIDE

FIRST FLOOR BEAM/HEADER SCHEDULE

IDENTIFIER	DESCRIPTION	LENGTH	OPTIONS	ENG. NUM.	REMARKS
B01	BEAM STEEL - W12X30	20'-3"	ZCC, Z9X, ELB, ELC, ELL, ELN, GCB	143	
B07	BEAM STEEL - W12X14	20'-3"	GCB	103	
B18	INT HEADER - 2X8 - 2 PLY	4'-7 1/2"		100	FIELD INSTALLED
B20-3	LVL - 16	14'-11"	MAA, ZCC	124	5.A
PFO4	EXT HEADER - 2X12 - 2 PLY	14'-4"	GCB, ELB, ELC, ELL, ELN	120	PORTAL FRAME

FIRST FLOOR JACK SCHEDULE

IDENTIFIER	DESCRIPTION	OPTIONS	ENG. NUM.	REMARKS
J01	JACK - (3) 2X4 SPF STUD GRADE	SRM, SGK	112	FULL HEIGHT STUDS
J107	JACK - (2) 2X4 SPF STUD GRADE	ZCC	167	
J108	JACK - 2X4 SPF STUD GRADE		150, 167	
J109	JACK - 2X4 SPF STUD GRADE		150, 167	
J117	JACK - (3) 2X4 SPF STUD GRADE	GCB	120	
J13	JACK - (4) 2X6 SPF STUD GRADE	ZCC, MAA	124	
J14	JACK - (3) 2X6 SPF STUD GRADE	ZCC, MAA	124	
J17	JACK - (3) 2X4 SPF STUD GRADE	ZCC, FBA		
J14	JACK - (2) 2X4 SPF STUD GRADE	MBL		
J59	JACK - (2) 2X4 SPF STUD GRADE	ELL	105	
J94	JACK - (2) 2X4 SPF STUD GRADE	ELL	105	
J47	JACK - (4) 2X4 SPF STUD GRADE	GCB		
J48	JACK - (4) 2X4 SPF STUD GRADE	GCB		
J51	JACK - (3) 2X4 SPF STUD GRADE	GCB	120	
J52	JACK - (6) 2X4 SPH	GCB, ELB, ELC, ELL, ELN	119	
J53	JACK - (6) 2X4 SPH	SRM, SGK, SRI, SXS, GCB	142, 143	



- STUD SPACING FOR FRONT WALLS AT LIVING ROOM:**
- 115 NO ATTIC "BTU/MAU", 2x4 STUD WALLS AT 16" O.C.
 - 157 W ATTIC "BTU/MAU", 2x4 STUD WALLS AT 12" O.C.
- STUD SPACING FOR FRONT WALLS AT FOYER:**
- 116 2x4 STUD WALLS AT 12" O.C.
 - 157 2x4 STUD WALLS AT 12" O.C.
- STUD SPACING FOR FRONT / SIDE WALLS AT GARAGE:**
- 125 W 60 MPH "SRM" OR 100 MPH "SOK", 2x4 STUD WALLS AT 16" O.C. OR
 - 125 W 110 MPH "SQL" OR 120 MPH "SRX", 2x4 STUD WALLS AT 12" O.C.
- STUD SPACING FOR REAR WALLS AT DINETTE/ KITCHEN:**
- 117 W CORPORATE TRUSS SPECS, "SRI" OR SOUTHEAST SPECS, "SXS" WITHOUT ATTIC, 2x4 STUD WALLS AT 16" O.C. OR
 - 117 W NORTHEAST TRUSS SPECS, "SRJ" WITHOUT ATTIC, 2x4 STUD WALLS AT 12" O.C. OR
 - 158 W ATTIC "BTU/MAU", 2x4 STUD WALLS AT 12" O.C.
- STUD SPACING FOR REAR WALLS AT FAMILY ROOM:**
- 117 NO ATTIC "BTU/MAU", 2x4 STUD WALLS AT 16" O.C. OR
 - 158 W ATTIC "BTU/MAU", 2x4 STUD WALLS AT 12" O.C.

STEEL COLUMN SCHEDULE

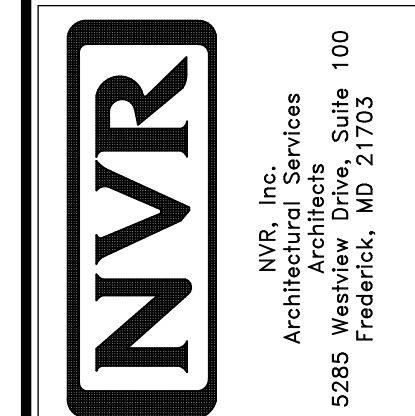
IDENTIFIER	STYLE	HEIGHT	OPTIONS	ENG. NUM.	REMARKS
2452	152	104			

FIRST FLOOR PLAN
SCALE: 1/4" = 1'-0"

REV. NO. DATE

1	08/01/16	NL - DRAWING ALIGNMENT
2	07/12/11	SL5 - T-PLY CONVERSION PROJECT

NVR, Inc., owner, expressly reserves its copyright in these plans. These plans are not to be reproduced, changed, copied, or otherwise used in any way without the written consent of NVR, Inc.



MODEL
NAPLES

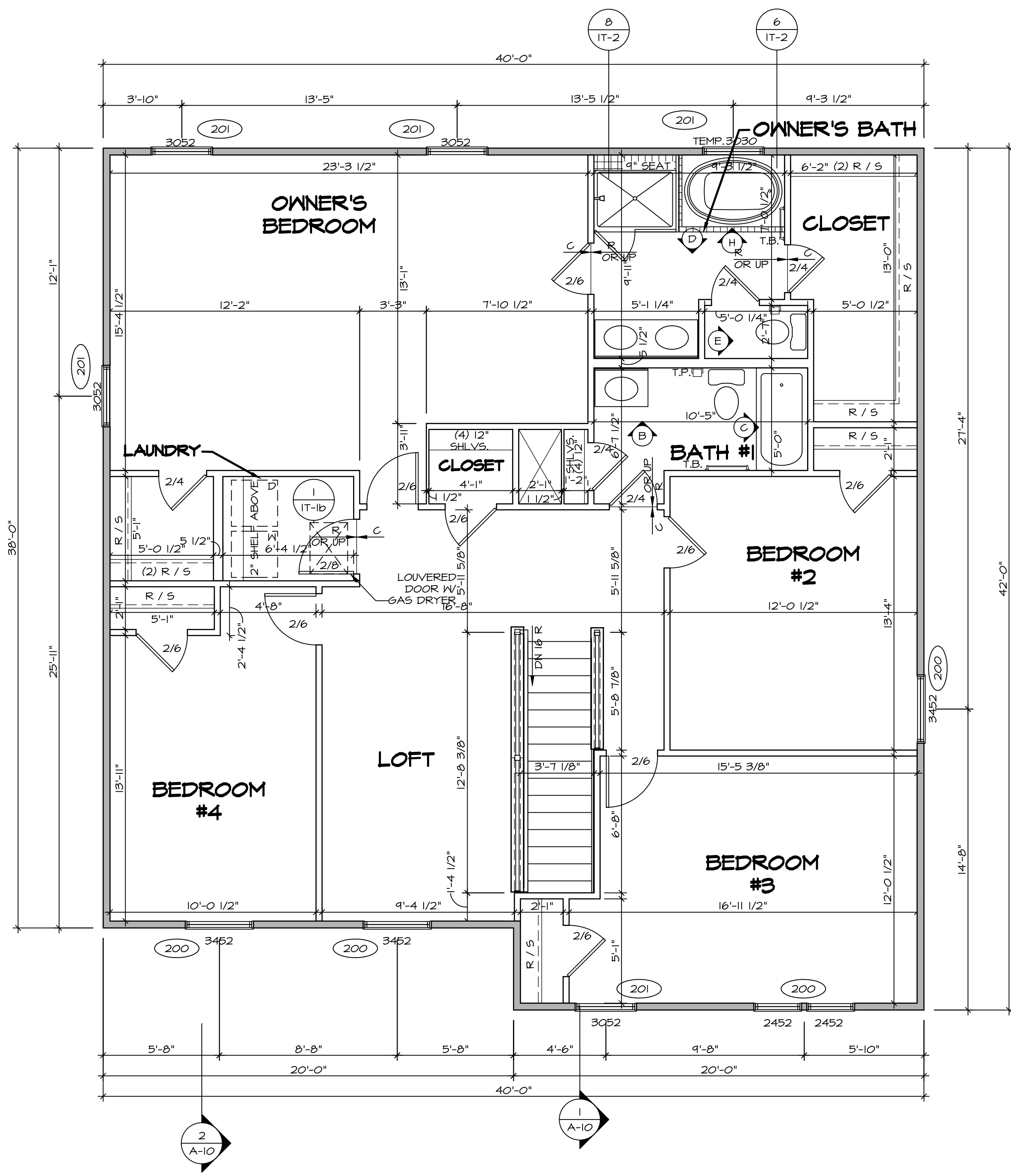
DRAWING TITLE
FIRST FLOOR PLAN

OPTION DESCRIPTION
A-7

SHEET NO.
32

SET NO. NAPOO
VERSION 06
DRAWN BY TN
DATE: 05/22/15
OPTION

C:\NVR\Solves\NAPLES_NAPOO_06\061-C1-A-7-2273\906111\SheetA_Lot_Specific_S2_A-7_PLN1_LS.dwg 08/16/18 - 3:04 am



1
A-8 **SECOND FLOOR PLAN**
SCALE: 1/4" = 1'-0"

LEGEND

	BEARING WALL
	NON BEARING WALL
	INDICATES BEARING FROM POINT-LOAD ABOVE
	JACKS
	BEAM/HEADER
	PAD FOOTING
	STEEL COLUMN
	PORTAL FRAME
	JOIST/TRUSS
	LVL
	ENGINEERING PAGE NUMBER

SEE FC DETAILS FOR FRAMING CONNECTORS

- FLOOR PLAN NOTES**
- ALL HEADERS ARE (2) 2x6 w/ 2x4 WALLS OR (3) 2x6 w/ 2x6 WALLS, UNLESS OTHERWISE NOTED.
 - ALL HEADERS TO HAVE (1) 2x4 OR 2x6 JACK AND KING STUD EACH END, UNLESS OTHERWISE NOTED.
 - ALL EXTERIOR WALLS TO BE 4" w/ OSB OR 3 1/2" w/ T-PLY, ALL INTERIOR WALLS TO BE 3 1/2", UNLESS OTHERWISE NOTED.
 - HATCHED AREAS INDICATE DROPPED CEILINGS. ALL DROPPED CEILINGS ARE 12" UNLESS OTHERWISE NOTED. SEE "BRACED WALL PANEL DETAIL SHEET" FOR SPECIAL WALL FRAMING LOCATIONS AND HEADER SIZES, IF APPLICABLE.
 - SEE STANDARD DETAIL CATEGORY "11" SHEET(S) FOR INTERIOR TRIM DETAILS.
 - SEE ARCHITECTURAL DETAIL SHEET "AD" FOR HOUSE SPECIFIC INTERIOR TRIM OPTION TABLE.
 - ALL WINDOWS HAVE 1" x 1/2" HEADER HEIGHT UNLESS OTHERWISE NOTED.
 - ALL HEADERS IN NON-BEARING WALLS SHALL BE A SINGLE FLAT 2x4 OR 2x6 ATTACHED TO CRIPPLES ABOVE, UNLESS OTHERWISE NOTED.

SECOND FLOOR JACK SCHEDULE

IDENTIFIER	DESCRIPTION	OPTIONS	ENG. NUM.	REMARKS

- LVL FLY TO PLY FASTENING SCHEDULE:**
- 1A - (2) FLY UP TO AND INCLUDING 11 7/8" TALL; FASTEN PLIES W/ (2) ROWS 16D NAILS AT 12" O.C.
 - 2A - (2) PLY 14" TO AND 18" TALL (INCLUSIVE); FASTEN PLIES W/ (3) ROWS 16D NAILS AT 12" O.C.
 - 3A - (2) PLY 20" TALL AND OVER; FASTEN PLIES W/ (4) ROWS 16D NAILS AT 12" O.C.
 - 4A - (3) PLY UP TO AND INCLUDING 11 7/8" TALL; FASTEN PLIES W/ (2) ROWS 16D NAILS AT 12" O.C. FROM EACH SIDE
 - 5A - (3) PLY 14" TO AND 18" TALL (INCLUSIVE); FASTEN PLIES W/ (3) ROWS 16D NAILS AT 12" O.C. FROM EACH SIDE
 - 6A - (3) PLY 20" TALL AND OVER; FASTEN PLIES W/ (4) ROWS 16D NAILS AT 12" O.C. FROM EACH SIDE

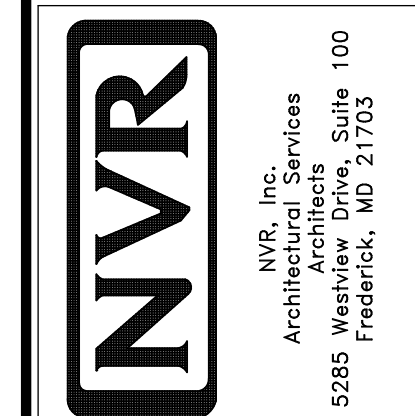
SECOND FLOOR BEAM/HEADER SCHEDULE

IDENTIFIER	DESCRIPTION	LENGTH	OPTIONS	ENG. NUM.	REMARKS

REVISIONS

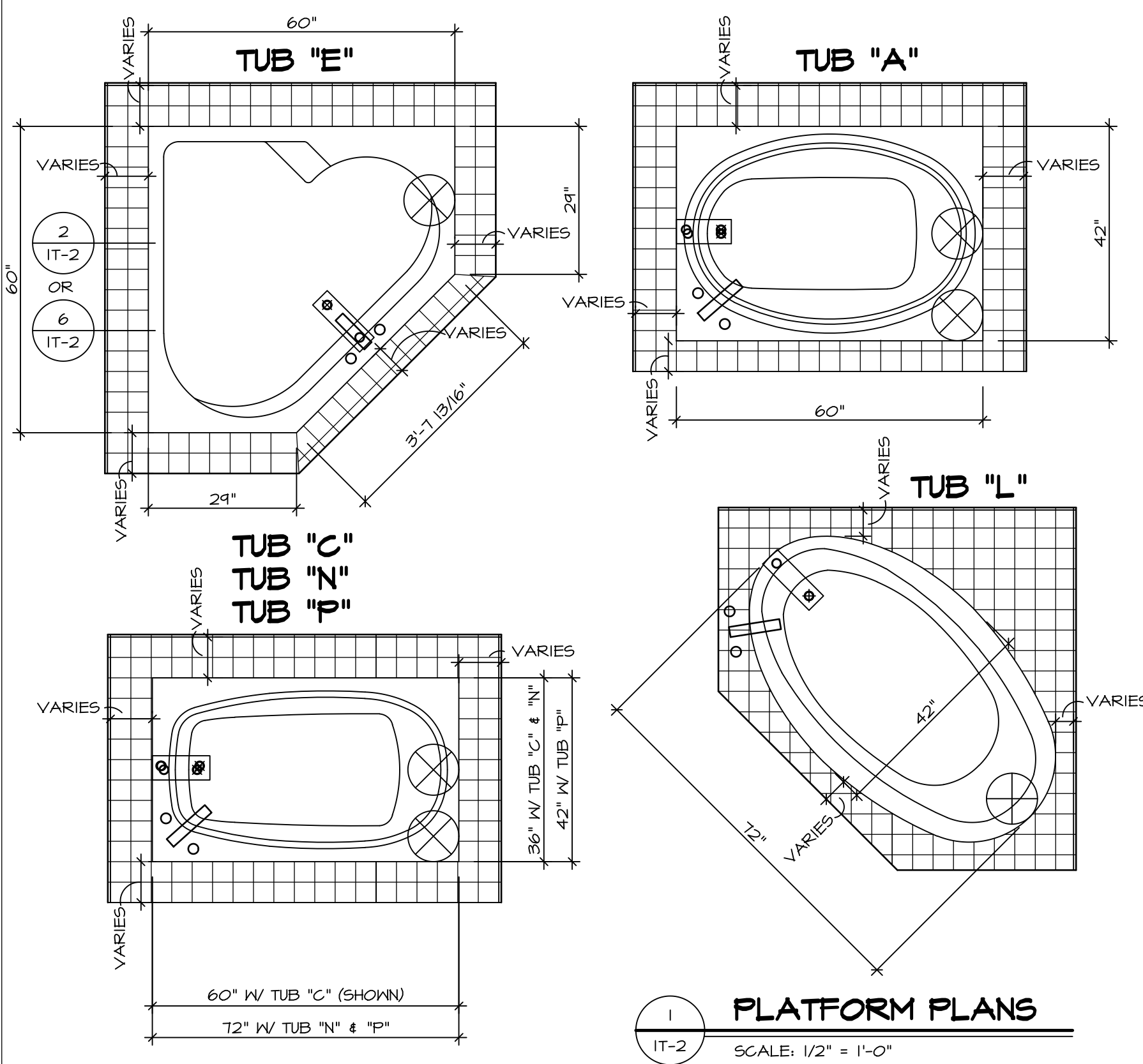
REV. NO.	DATE	DESCRIPTION
1	08/01/16	N.L. - DRAWING ALIGNMENT
2	07/12/17	SLS - T-PLY CONVERSION PROJECT

NVR, Inc., owner, expressly reserves its copyright in these plans. These plans are not to be reproduced, changed, copied, or otherwise used in any way without the prior written consent of NVR, Inc.



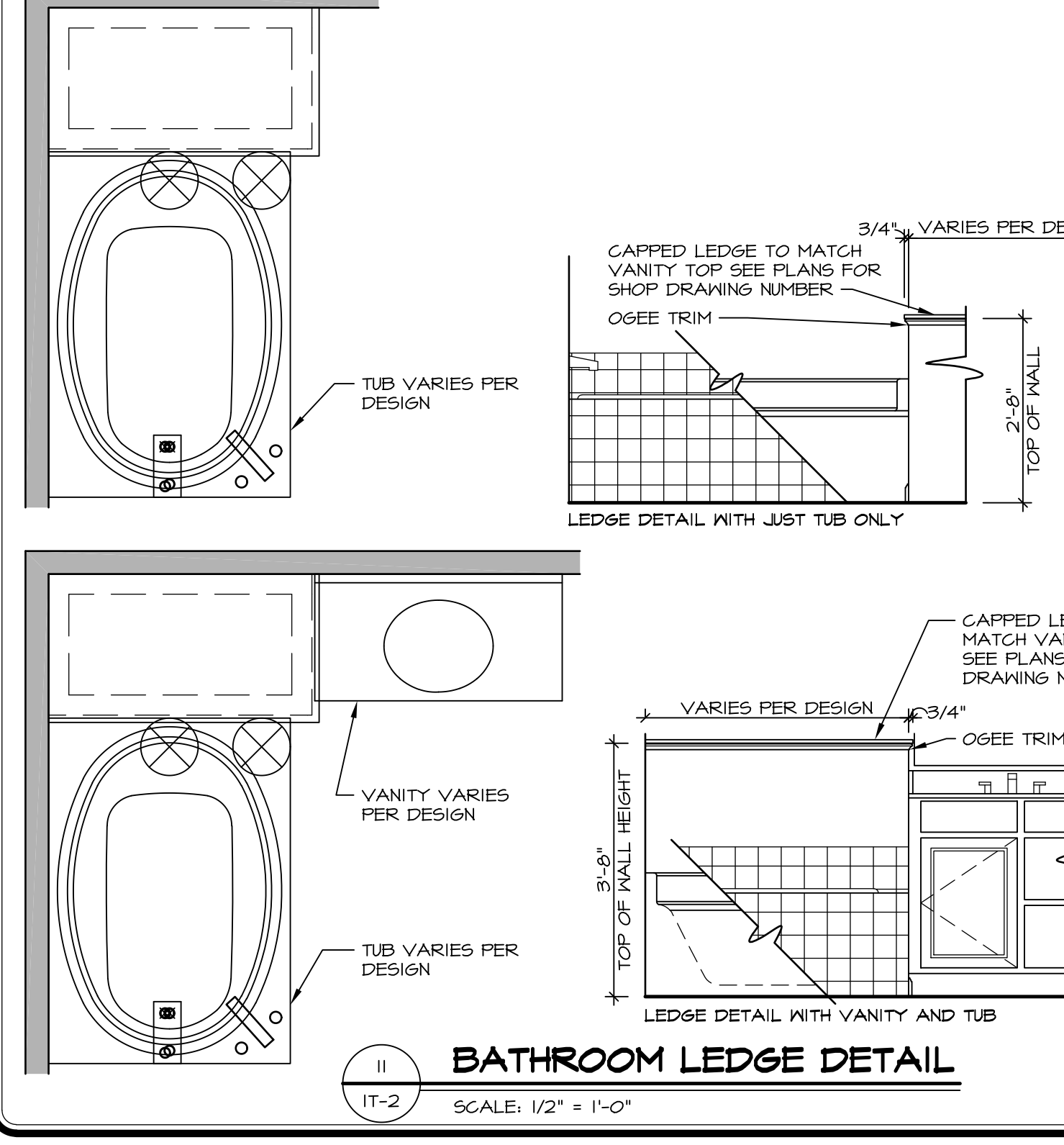
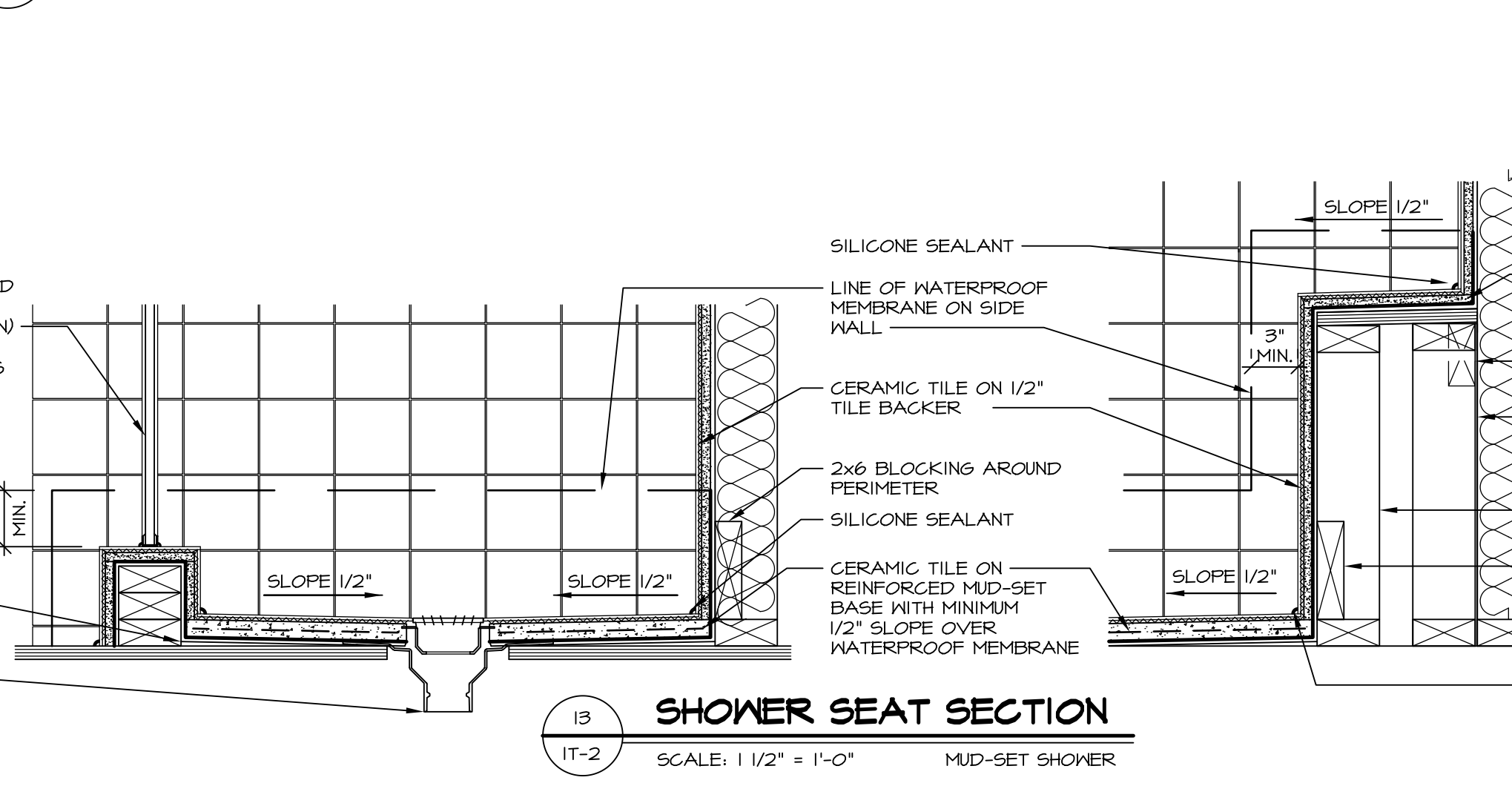
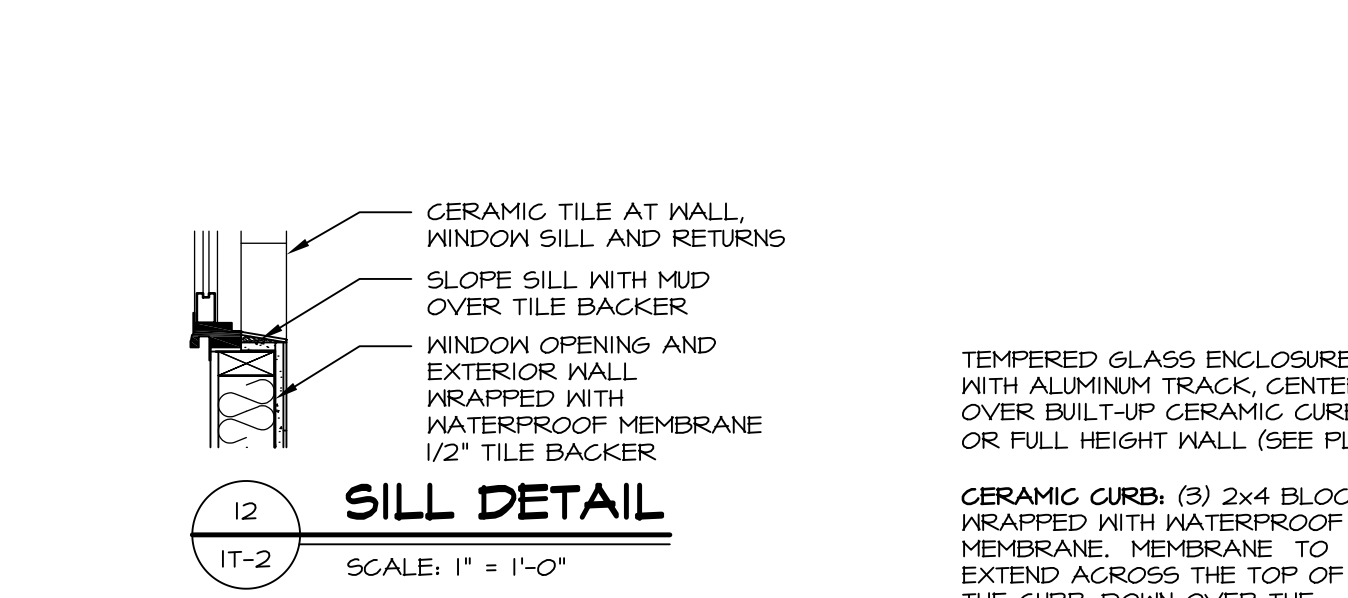
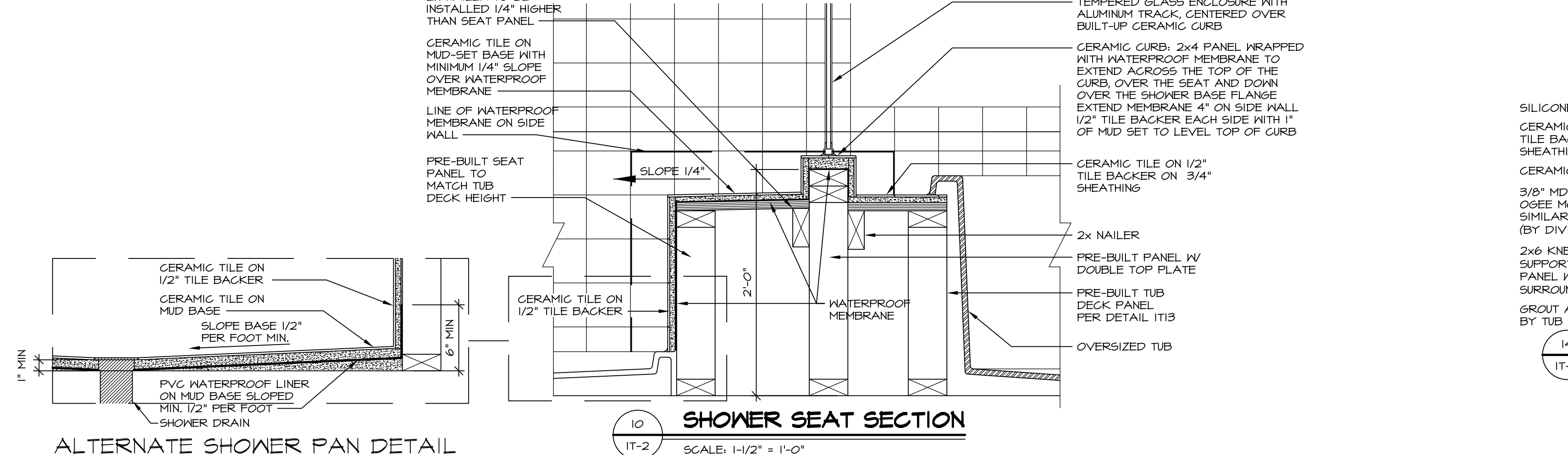
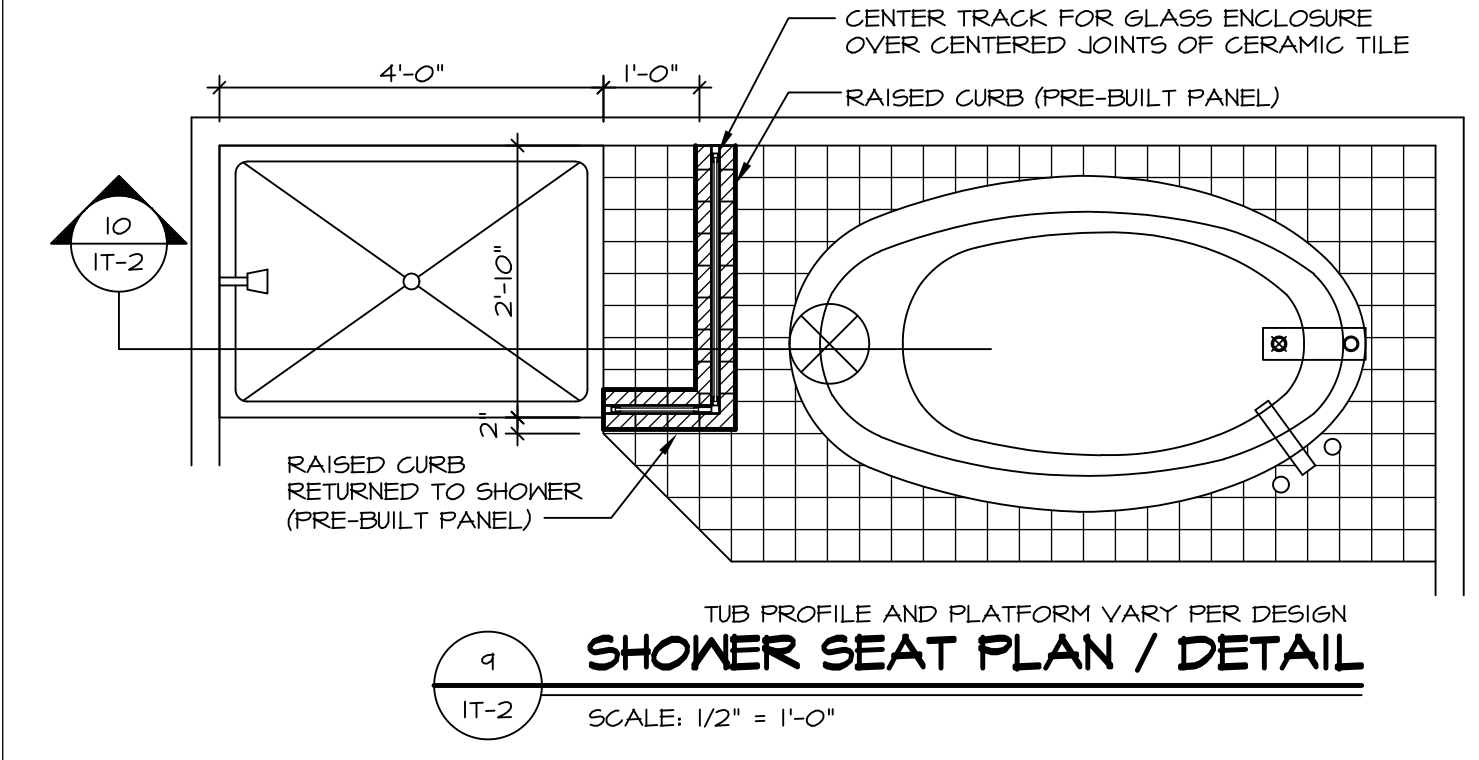
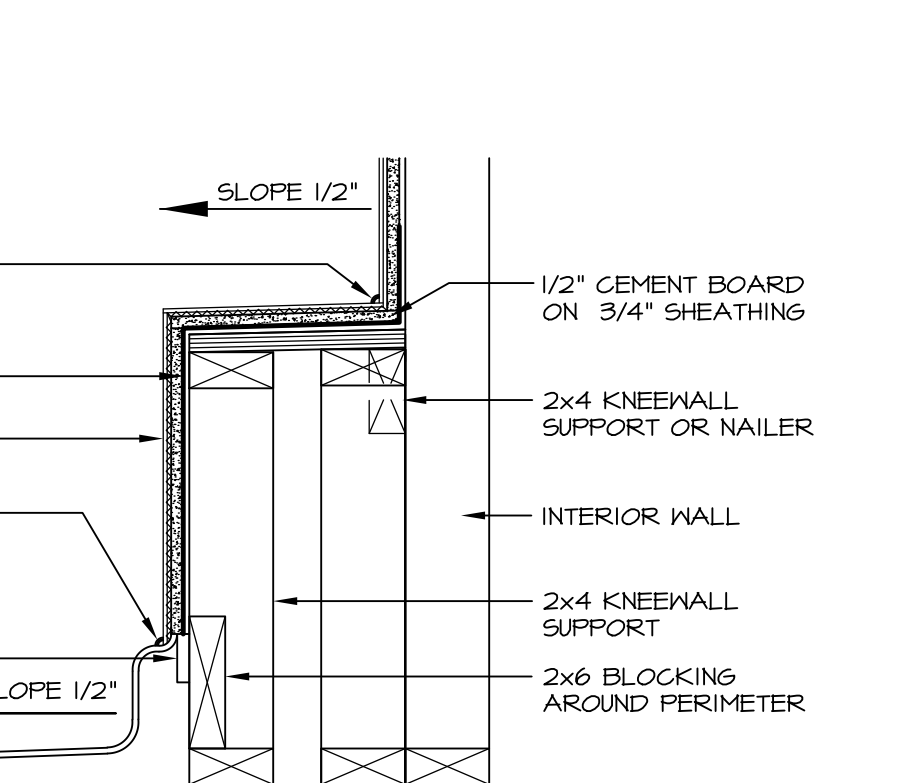
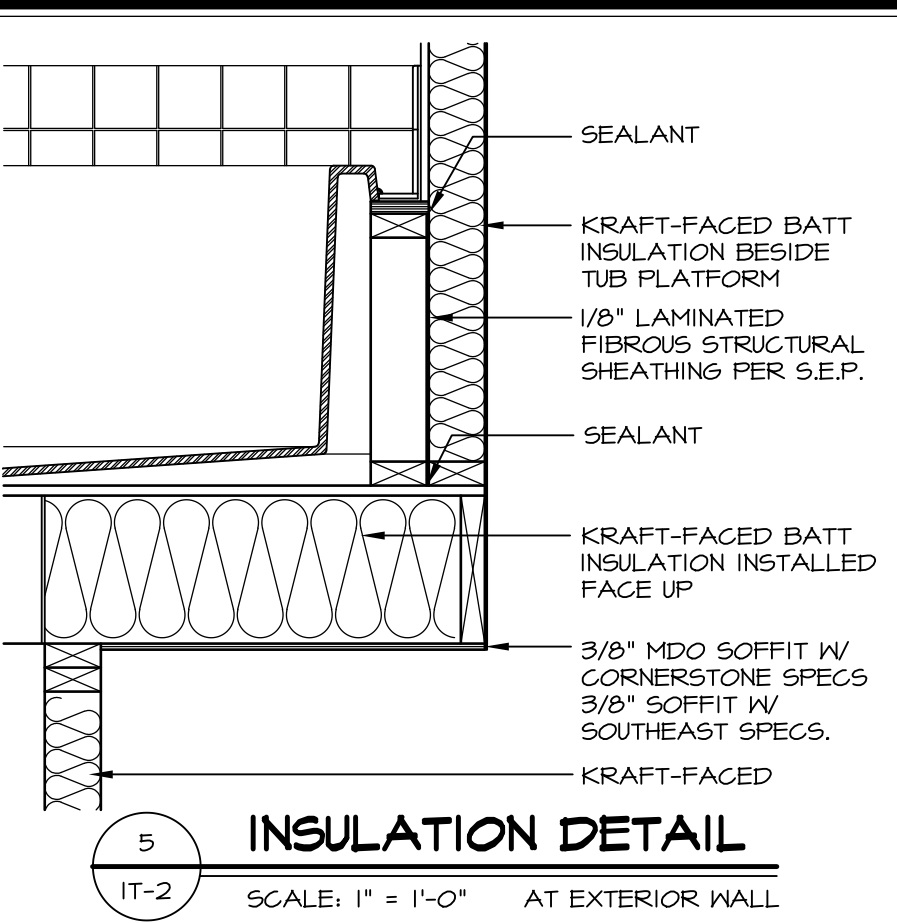
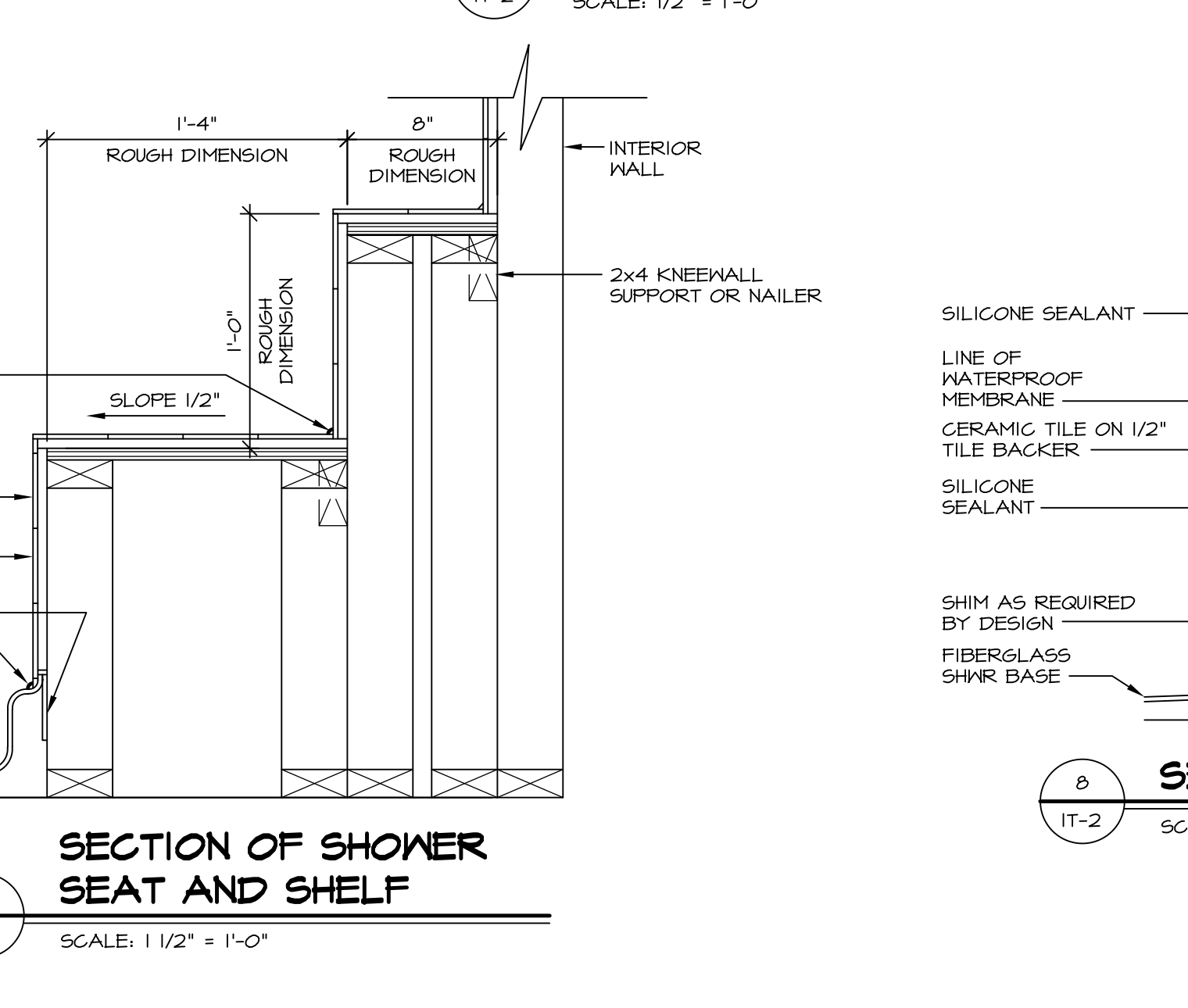
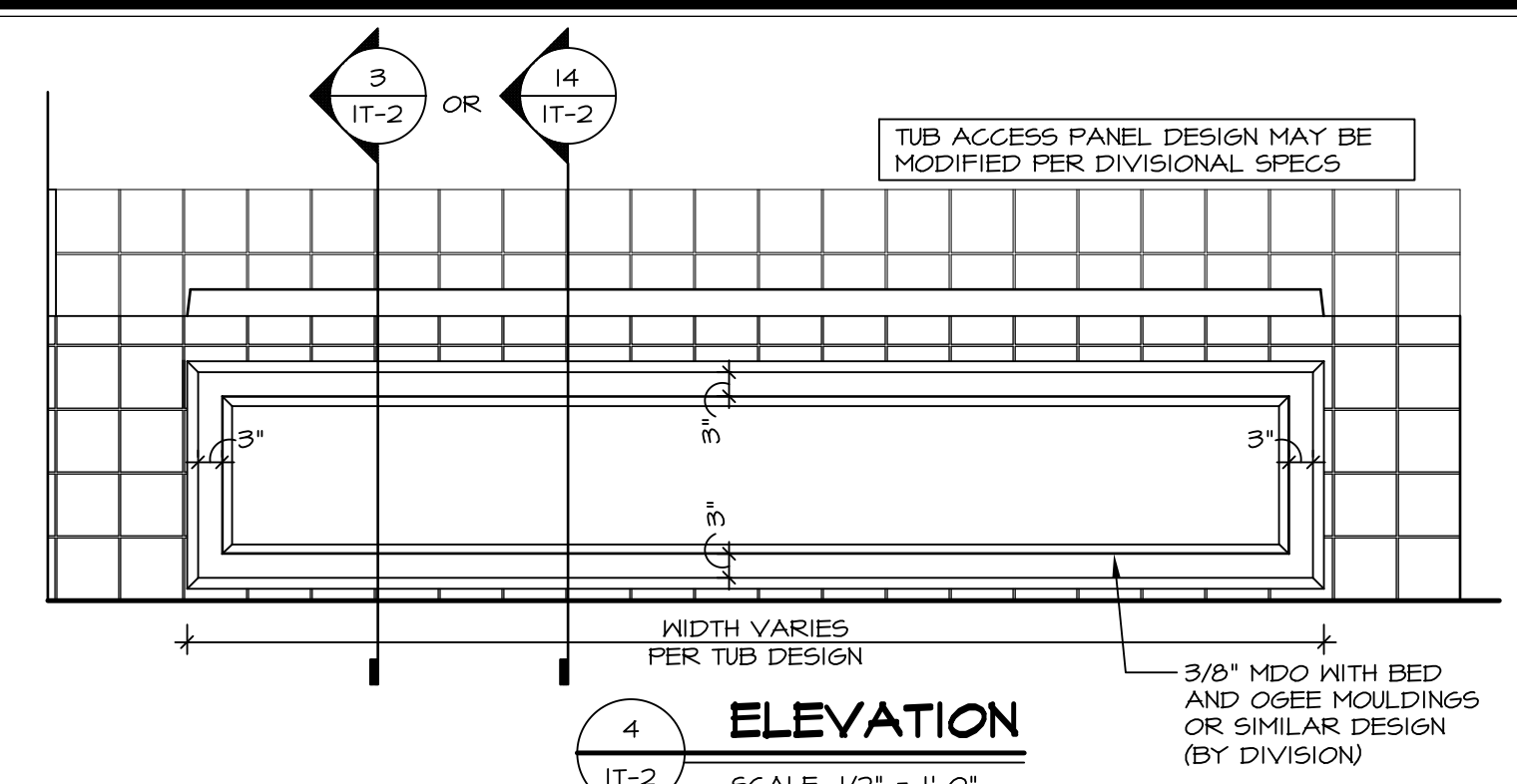
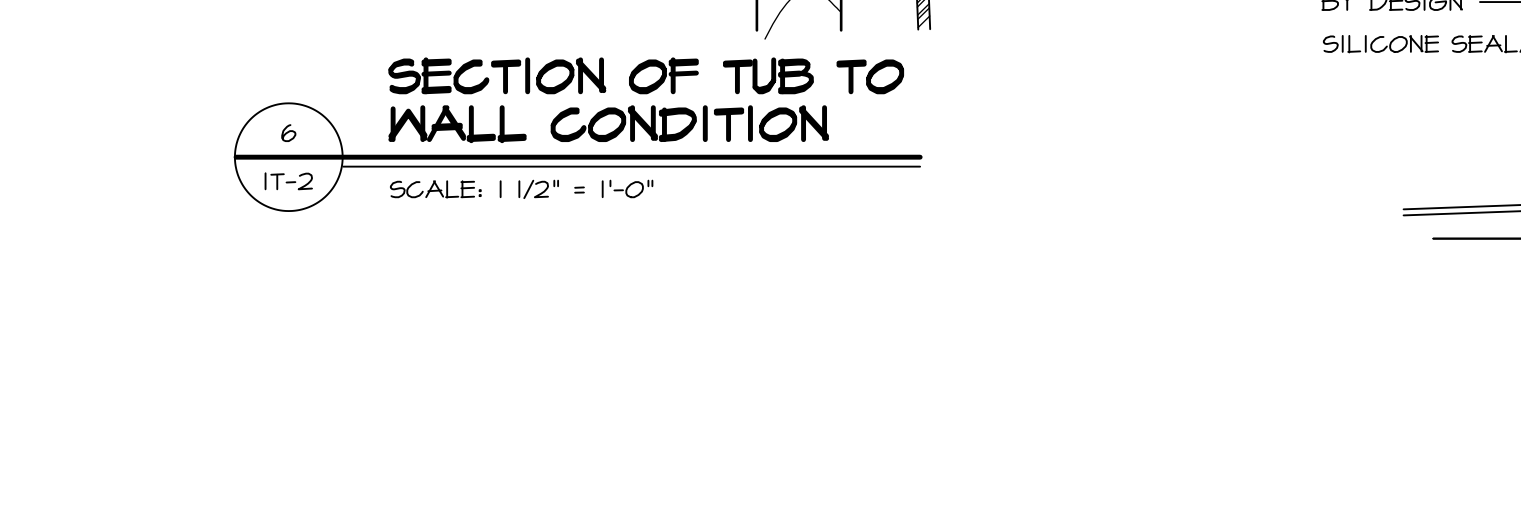
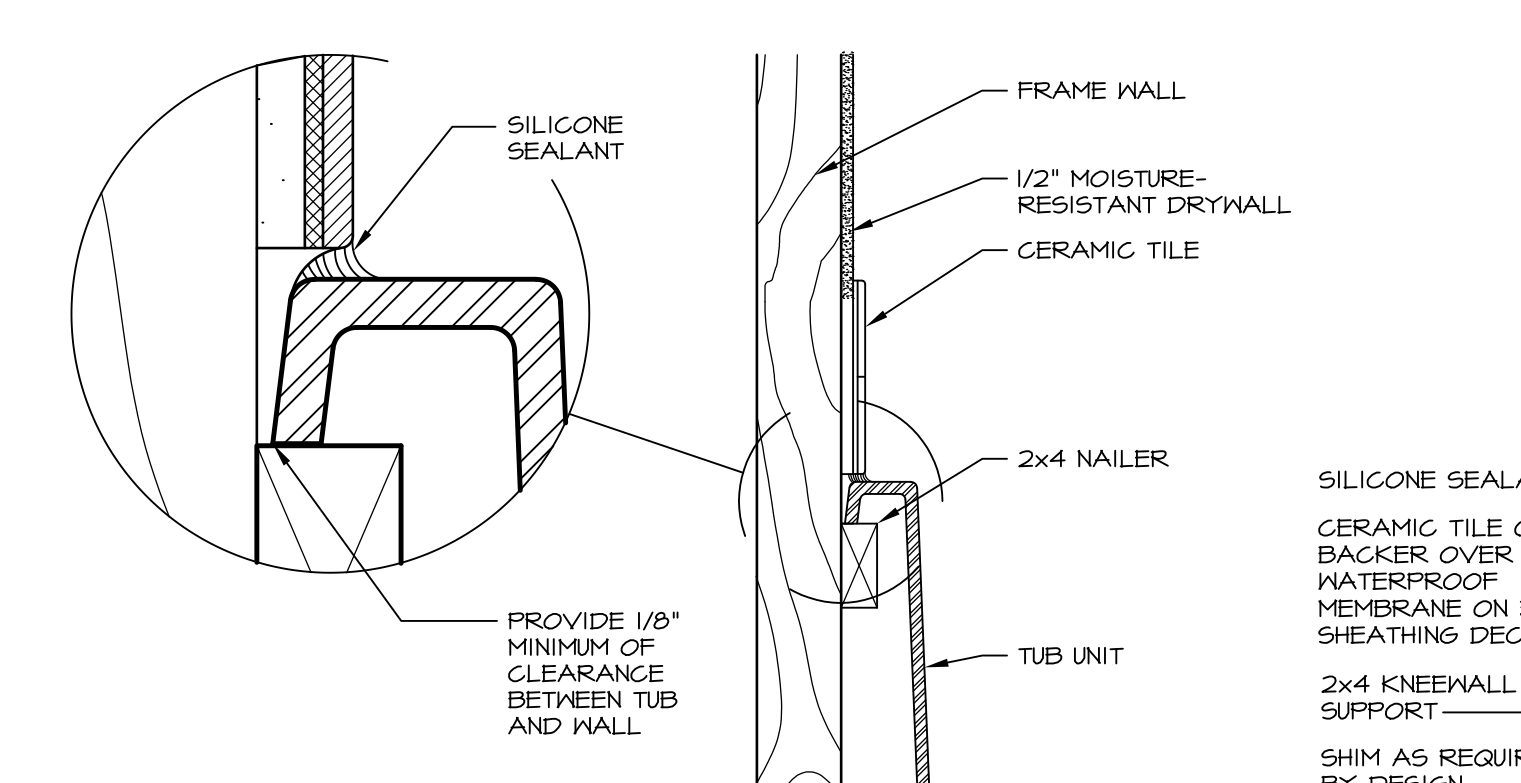
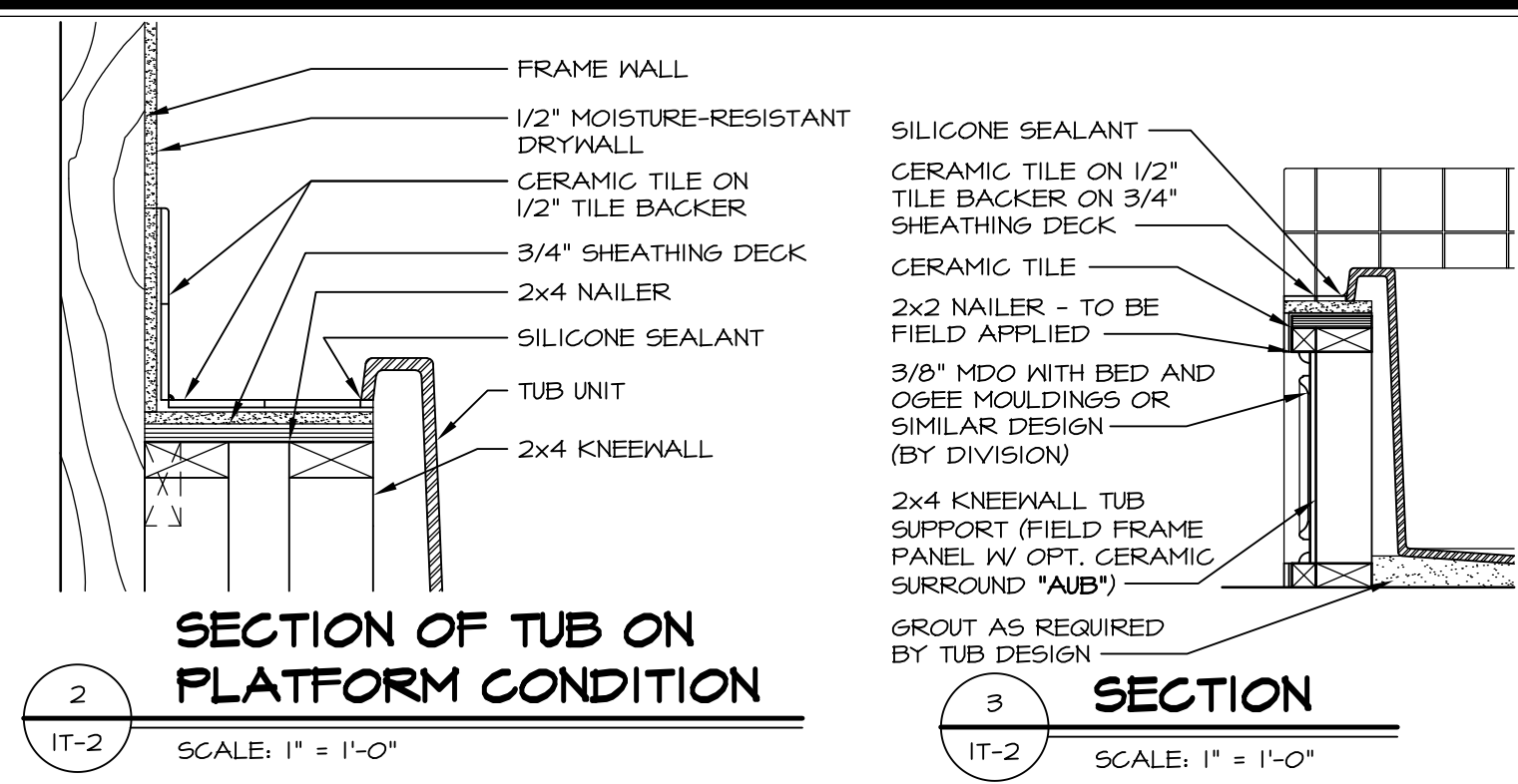
SET NO. NAPOO
VERSION 06
DRAWN BY TN
DATE: 05/22/15
OPTION

MODEL
NAPLES
DRAWING TITLE
SECOND FLOOR PLAN
OPTION DESCRIPTION



1 PLATFORM PLANS
SCALE: 1/2" = 1'-0"

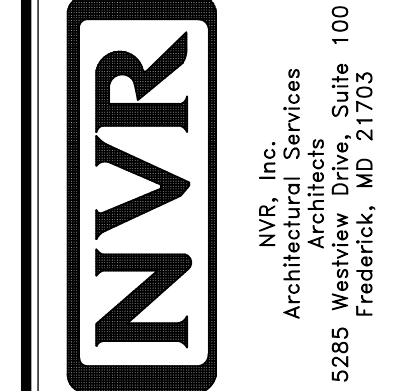
TUB	MANUF.	HEIGHT	WIDTH	LENGTH	TUB DECK PANEL HEIGHT
"A"	KOHLER/ STERLING	18 3/4"	42"	60"	17 1/8"
"C"	KOHLER/ STERLING	18 3/4"	36"	60"	17 1/8"
"E"	KOHLER/ STERLING	19 1/2"	60"	60"	17 7/8"
"L"	KOHLER/ STERLING	18 1/2"	42"	72"	16 7/8"
"N"	KOHLER/ STERLING	18 3/4"	36"	72"	17 1/8"
"P"	KOHLER/ STERLING	18 3/4"	42"	72"	17 1/8"



REVISIONS

REV. NO.	DATE	DESCRIPTION
1	5/1/17	EBP - REVISED DETAIL 1 AND 11 TO REMOVE TUB ACCESS PANEL REF. (DSS #15 5414)
2	9/2/17	EBP - REVISED T-FLY NOTE TO CALL OUT LFS
3	9/2/17	EBP - REVISED NOTE ON DETAIL #1 - REVISED ORDER OF MATERIAL PARA#4934

NVR, Inc., owner, expressly reserves its common law copyright and other property rights in these plans. These plans are not to be reproduced, stored in a retrieval system, or transmitted in any form or by any means, electronic, mechanical, photocopying, recording, or by any information storage and retrieval system, without the prior written consent of NVR, Inc.



SET NO. NVR

VERSION

DRAWN BY

DATE:

OPTION

MODEL STANDARD DETAILS

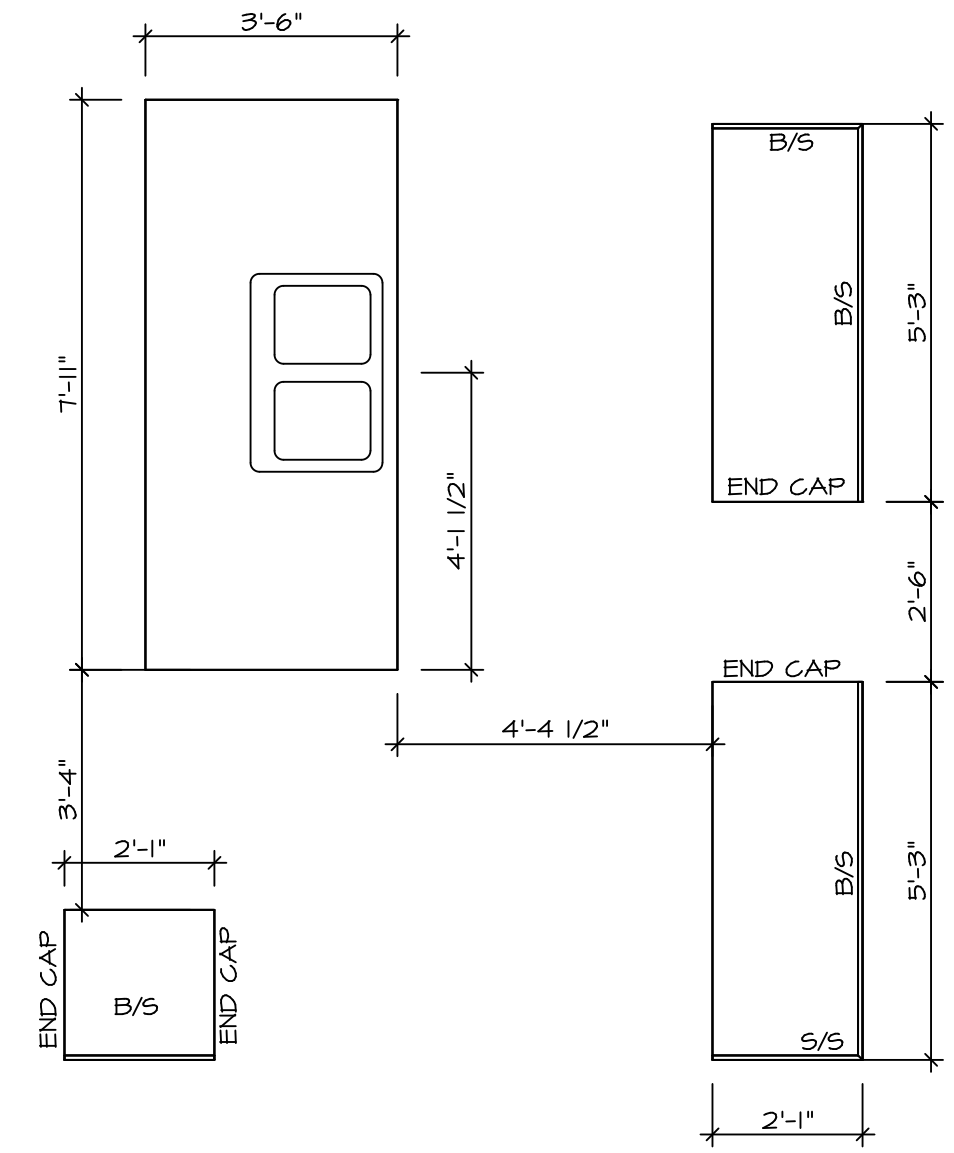
DRAWING TITLE INTERIOR TRIM DETAILS

BATH DETAILS

OPTION DESCRIPTION

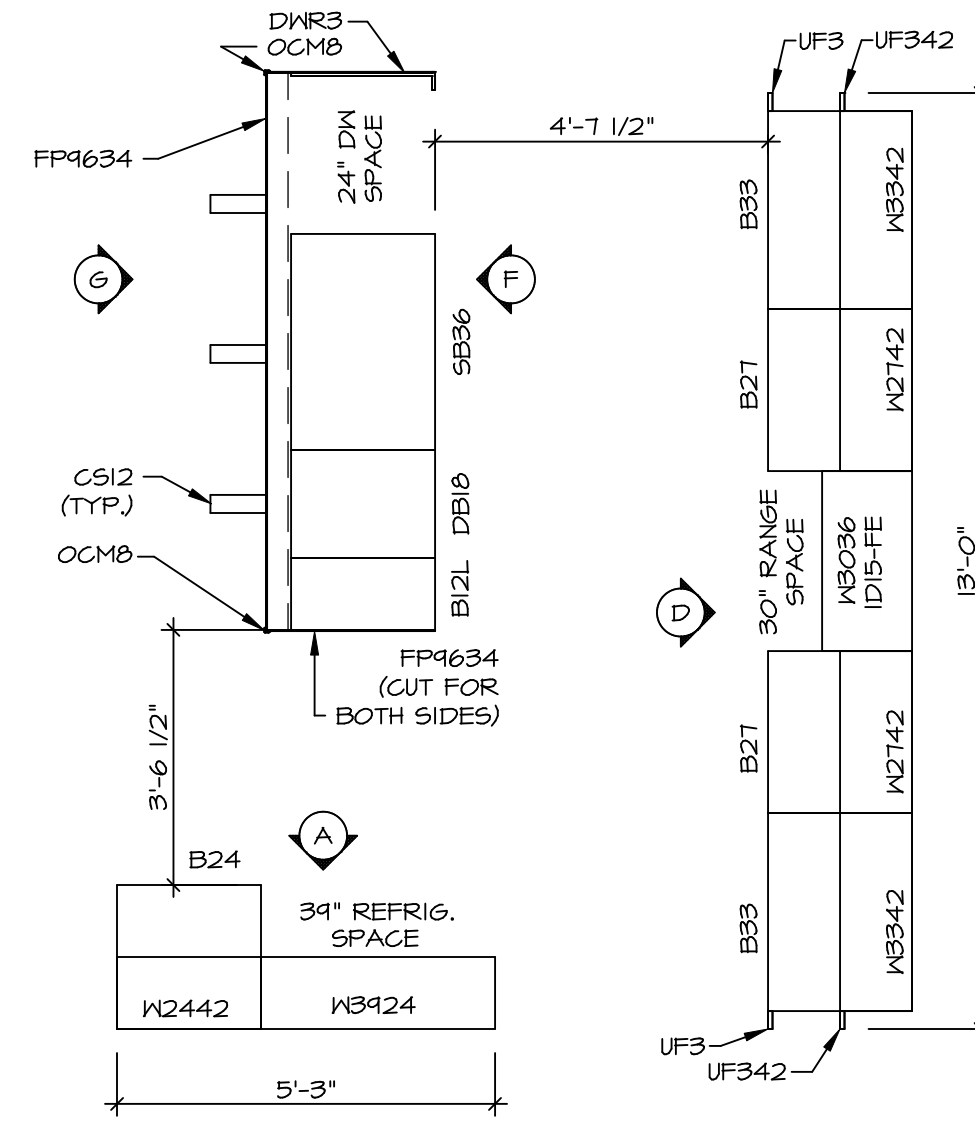
SHEET NO. IT-2

J:\Dwg\NVR\Interior Trim\IT2.dwg 09/27/17 - 9:20 am



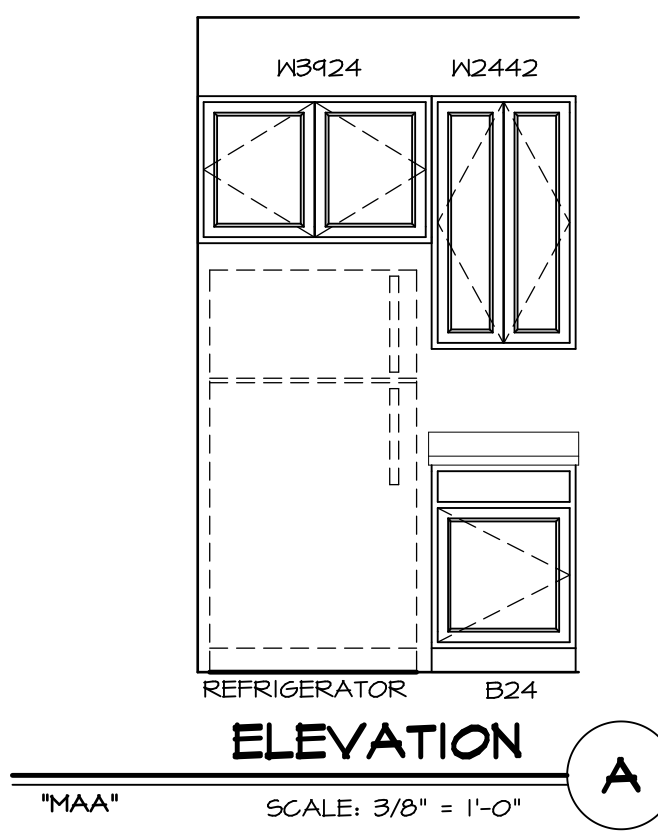
**KITCHEN COUNTERTOP
PLAN - KT-3293**

SCALE: 3/8" = 1'-0" A-12



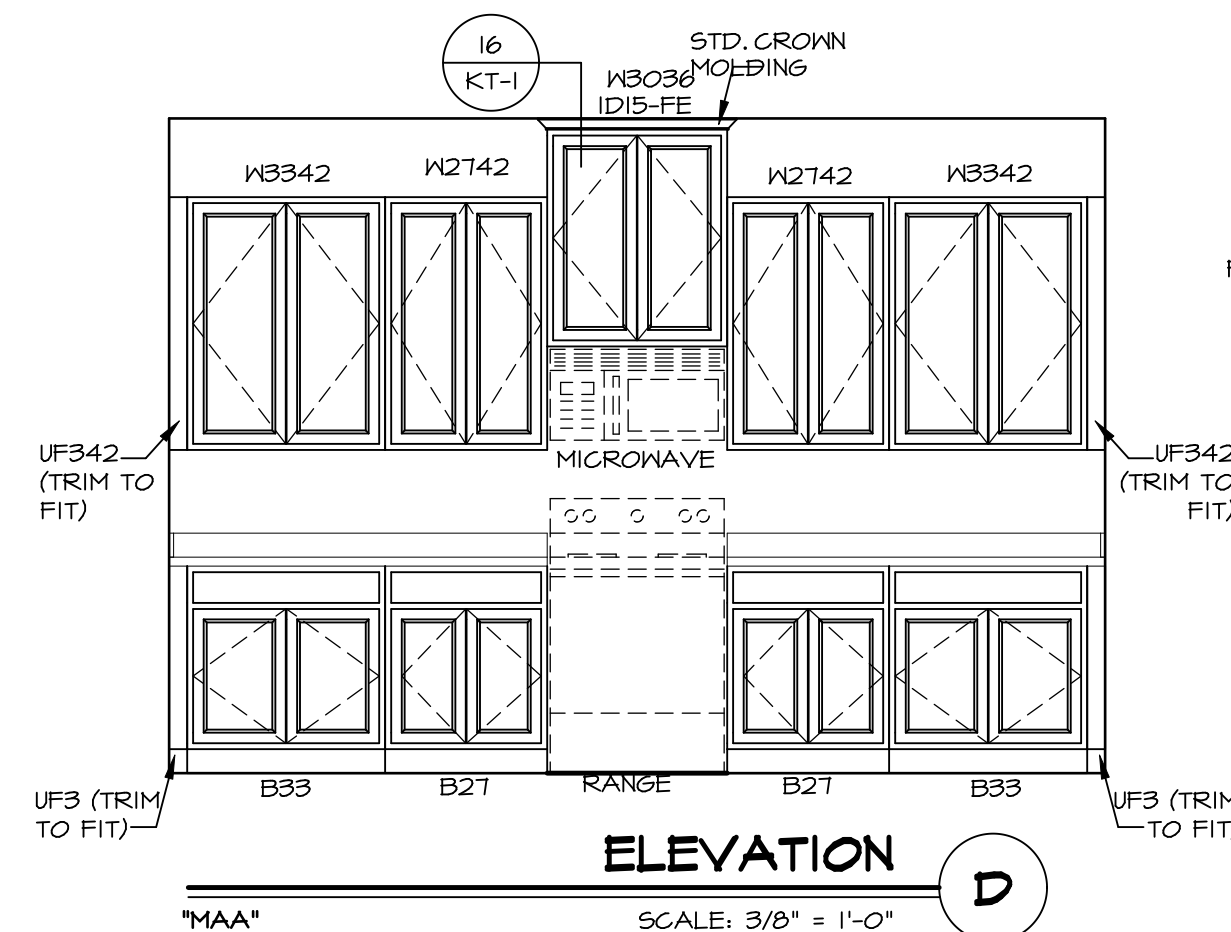
**KITCHEN CABINET
PLAN - KC-3293**

SCALE: 3/8" = 1'-0" A-12



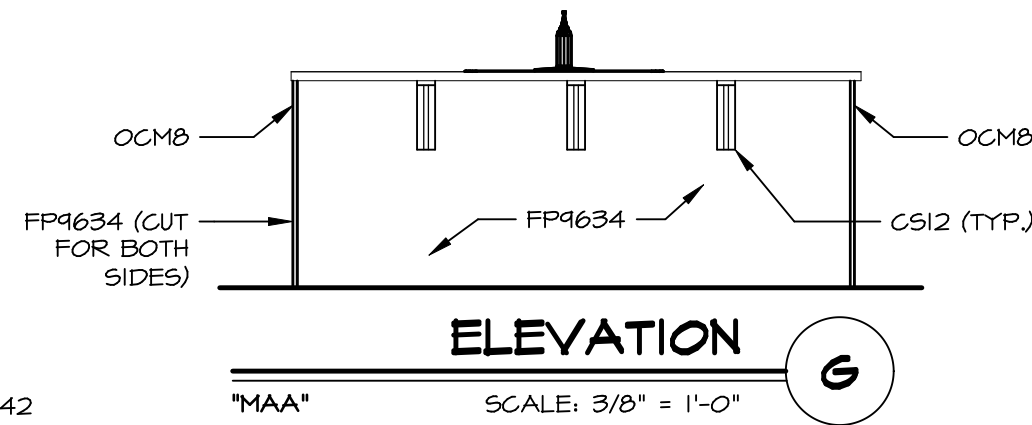
ELEVATION A

SCALE: 3/8" = 1'-0"



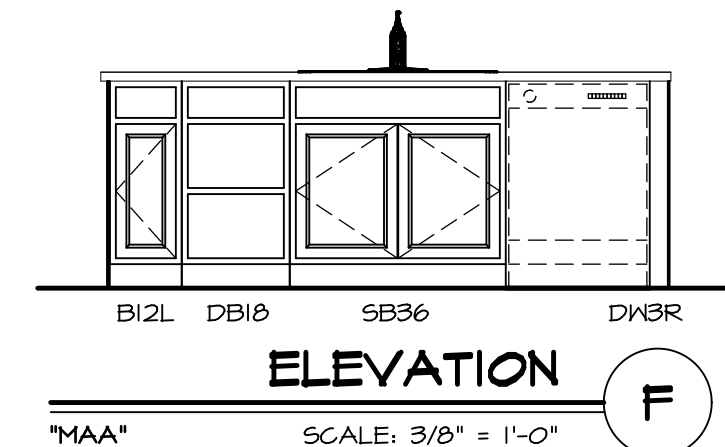
ELEVATION D

SCALE: 3/8" = 1'-0"



ELEVATION G

SCALE: 3/8" = 1'-0"



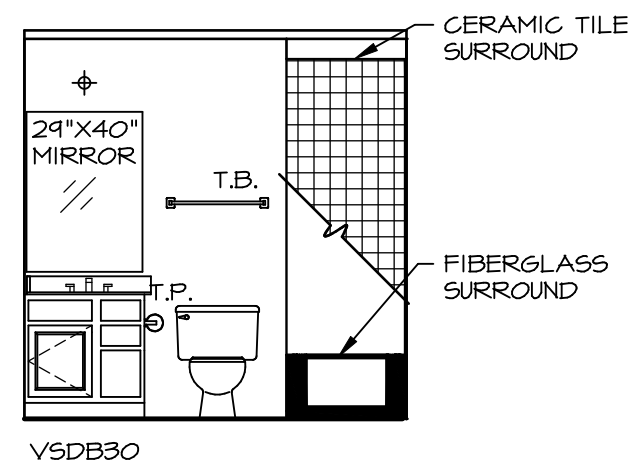
ELEVATION F

SCALE: 3/8" = 1'-0"

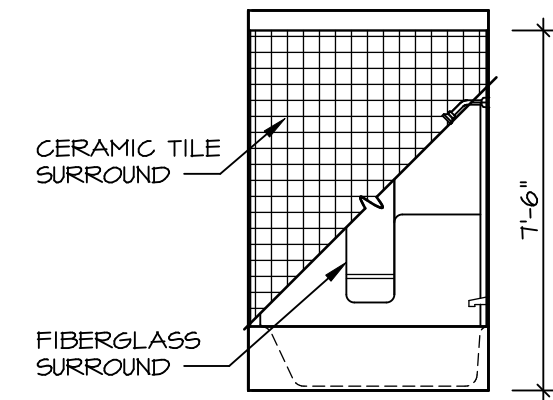
SHEET NO. A-12	MODEL NAPLES	SET NO. NAPOO	REMARKS
	DRAWING TITLE KITCHEN SECTION	VERSION 06	
49	OPTION DESCRIPTION	DATE: 05/22/15	REV. NO. DATE
		OPTION	

NVR
 NVR, Inc.
 Architectural Services
 Architects & Planners
 5285 Westpark Drive, Suite 100
 Frederick, MD 21703

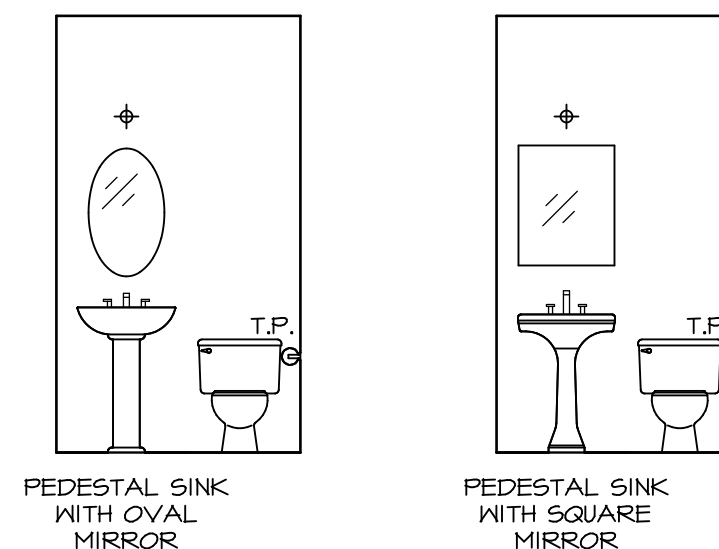
DATE: 05/22/15
 OPTION
 SET NO. NAPOO
 VERSION 06
 DRAWN BY TN
 C:\NVR\Solves\NAPLES_NAPOO_06\DCI-CH-X273\906111\SheetA Lot Specific\49 A-12 KIT_LS.dwg 08/16/18 - 3.04 gm



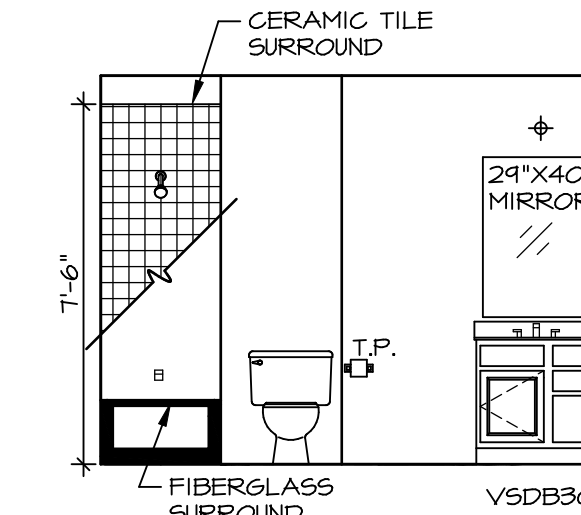
L **BASEMENT BATH**
SCALE: 1/4" = 1'-0"



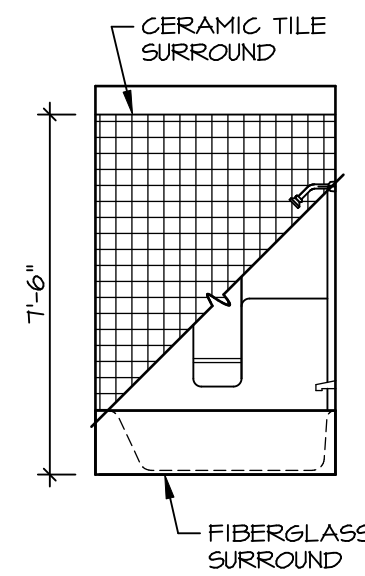
M **BASEMENT BATH**
SCALE: 1/4" = 1'-0"



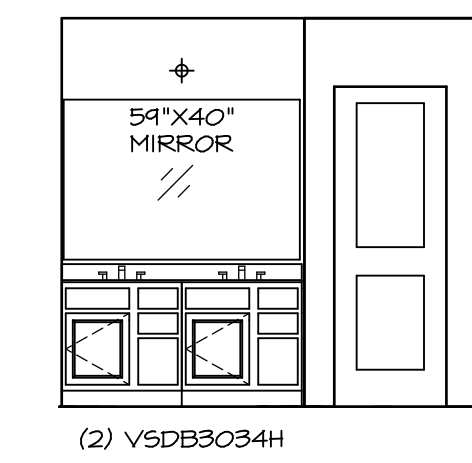
A **POWDER ROOM**
SCALE: 1/4" = 1'-0"



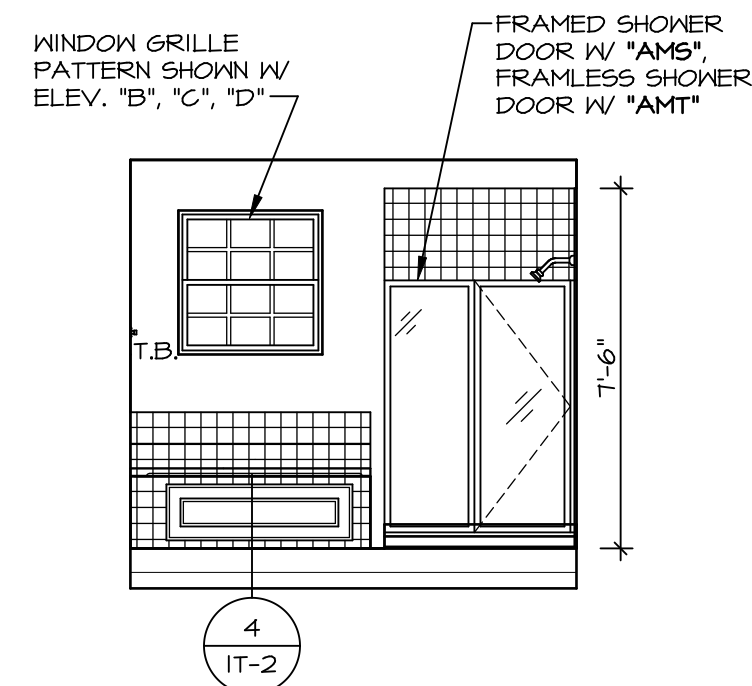
B **BATH #1**
SCALE: 1/4" = 1'-0"



C **BATH #1**
SCALE: 1/4" = 1'-0"



D **OWNER'S BATH**
SCALE: 1/4" = 1'-0"



H **OWNER'S BATH**
SCALE: 1/4" = 1'-0"



E **OWNER'S BATH**
SCALE: 1/4" = 1'-0"

NOTES:

1. TEMPERED GLASS SHOWER ENCLOSURE WITH SWING DOOR OR OPTIONAL SLIDING DOOR. BY DIVISION
2. TUB ACCESS PANELS PROVIDED AS NEEDED. ALL MATERIALS BY DIVISION
3. REFER TO SHEET ET-2 FOR TUB AND SHOWER DETAILS.
4. ALL V5DB24-42 DRAWERS TO BE SET ON RIGHT HAND.
5. BATH ELEVATIONS ARE SHOWN PER PLAN.

SHEET NO. A-13	MODEL NAPLES	SET NO. NAPOO VERSION 06	REVISIONS
	DRAWING TITLE BATH ELEVATIONS	DRAWN BY TN	REVISIONS
OPTION DESCRIPTION	DATE: 05/22/15	REV. NO. DATE	REMARKS
51	OPTION	1 08/07/16 N.L. - DRAWING ALIGNMENT	

NVR, Inc., owner, expressly reserves its copyright in these plans. These plans are not to be reproduced, changed, copied in any way, or used for any purpose not intended by NVR, Inc. without the written consent of NVR, Inc.

