

1
A-5
PLUMBING PLAN
SCALE: 1/4" = 1'-0"

SHEET NO. A-5	MODEL FLORENCE	SET NO. FLR00 VERSION 06	DRAWN BY	DATE:	OPTION	REV. NO. DATE	REMARKS
DRAWING TITLE PLUMBING PLAN							
OPTION DESCRIPTION							
31							
<p>NVR, Inc., owner, expressly reserves its copyright in the above drawings and plans. These plans are not to be reproduced, changed, copied in any way, or used for any purpose not intended by NVR, Inc. without the written consent of NVR, Inc.</p>							
<p>NVR NVR, Inc. Architectural Services Architects 21 Bay View Frederick, MD 21702</p>							
<p>C:\NVR\Solves\FLORENCE_FLR00_06\DCY-CH-X283\876727\Sheets\1-A-5-PLM6_LS.dwg 07/26/18 - 3:16 am</p>							

FLOOR PLAN NOTES



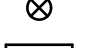
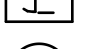

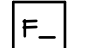



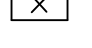
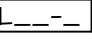
1. ALL HEADERS ARE (2) 2x6 W/ 2x4 WALLS OR (3) 2x6 W/ 2x6 WALLS, UNLESS OTHERWISE NOTED.
2. ALL HEADERS TO HAVE (1) 2x4 OR 2x6 JACK, EACH END, UNLESS OTHERWISE NOTED.
3. ALL EXTERIOR WALLS TO BE 4" AND ALL INTERIOR WALLS TO BE 3 1/2", UNLESS OTHERWISE NOTED.
4. HATCHED AREAS INDICATE DROPPED CEILINGS. ALL DROPPED CEILINGS ARE 12" UNLESS OTHERWISE NOTED.
5. SEE "BRACED WALL PANEL DETAIL SHEET" FOR SPECIAL WALL FRAMING LOCATIONS AND HEADER SIZES, IF APPLICABLE.
6. SEE STANDARD DETAIL CATEGORY "IT" SHEET(S) FOR INTERIOR TRIM DETAILS.
7. SEE ARCHITECTURAL DETAIL SHEET "AD" FOR HOUSE SPECIFIC INTERIOR TRIM OPTION TABLE.
8. ALL WINDOWS HAVE 7'-0 1/2" HEADER HEIGHT UNLESS OTHERWISE NOTED.

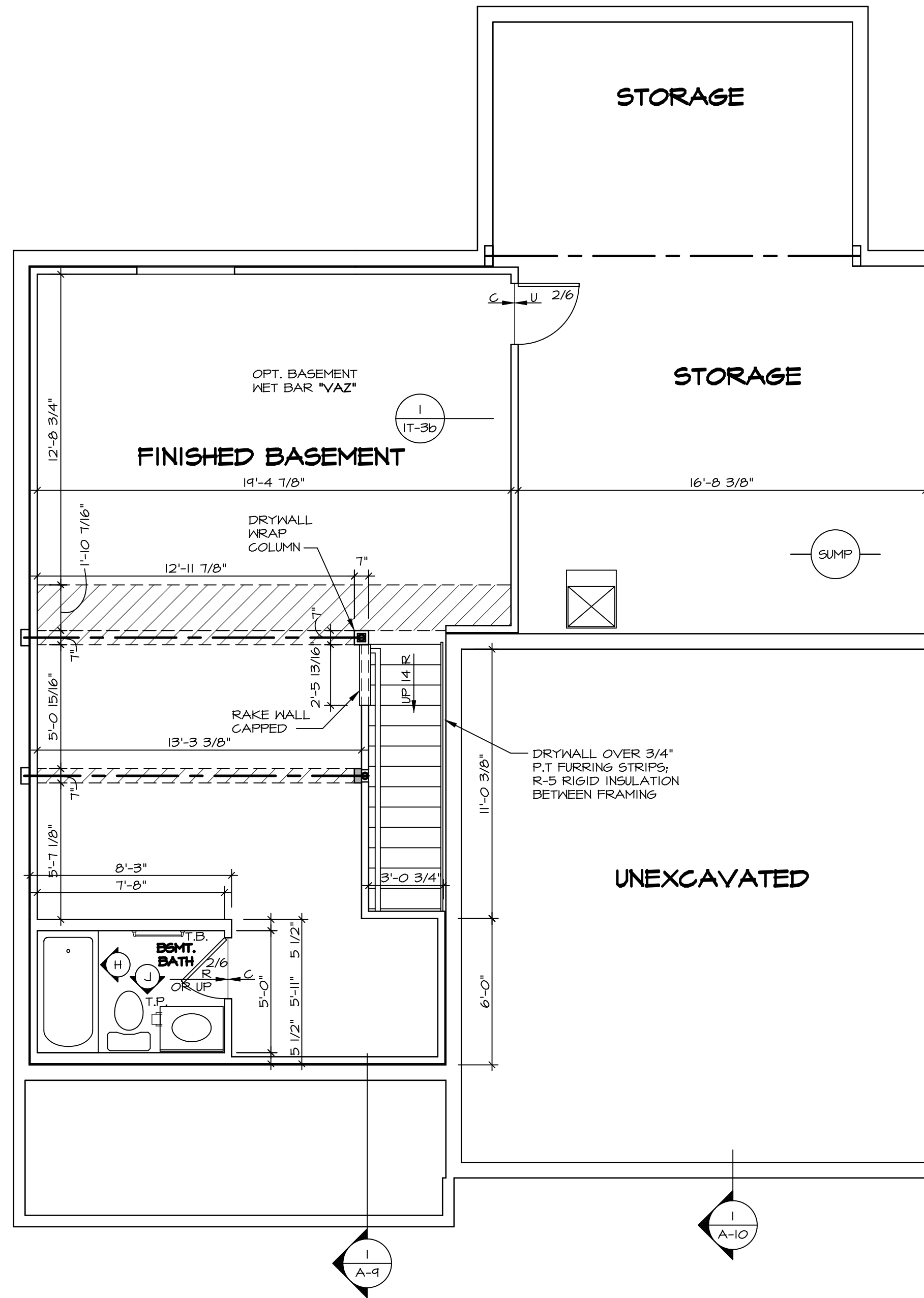
GYPSUM NOTES

AT GARAGE:
 GYPSUM BOARD AT COMMON WALLS, CEILINGS, BEAM WRAPS AND SUPPORTS PER STANDARD DETAIL FA-1(b) FIRE ASSEMBLIES OR AS REQUIRED BY LOCAL CODE.

AT STAIRS:
 1/2" GYPSUM BOARD AT UNDERSIDE OF STAIRS AND WALLS IN CLOSET

LEGEND

-  BEARING WALL
 -  NON BEARING WALL
 -  INDICATES BEARING FROM POINT-LOAD ABOVE
 -  JACKS
 -  BEAM/HEADER
 -  PAD FOOTING
 -  STEEL COLUMN
 -  PORTAL FRAME
 -  JOIST/TRUSS
 -  LVL
 -  ENGINEERING PAGE NUMBER
- SEE FC DETAILS FOR FRAMING CONNECTORS



BASEMENT FLOOR PLAN
 SCALE: 1/4" = 1'-0"

REV. NO.	DATE	REMARKS
1	07/26/16	TH - DRAWING ALIGNMENT

NVR, Inc., owner, expressly reserves its copyright in these plans. These plans are not to be reproduced, changed, copied, or otherwise used in any way without the written consent of NVR, Inc.



SHEET NO.	MODEL	SET NO.	VERSION	DRAWN BY	DATE:	OPTION
A-6	FLORENCE	06	06			
32	DRAWING TITLE	BASEMENT FLOOR PLAN				
	OPTION DESCRIPTION					

FIRST FLOOR JACK SCHEDULE				
IDENTIFIER	DESCRIPTION	OPTIONS	ENG. NUM.	FIELD INSTALLED
J01	JACK - (2) 2X4 SPF STUD GRADE		III	
J02	JACK - (3) 2X4 SPF STUD GRADE		III	
J03	JACK - (2) 2X4 SPF STUD GRADE		II3	
J04	JACK - (3) 2X4 SPF STUD GRADE		II3	
J05	JACK - (2) 2X4 SPF STUD GRADE		107	
J06	JACK - (2) 2X4 SPF STUD GRADE		107	
J16	JACK - (6) 2X4 SP#1		101	
J17	JACK - (3) 2X4 SP#1		101	
J27	JACK - (4) 2X4 SPF STUD GRADE	MAA	125	
J28	JACK - (4) 2X4 SPF STUD GRADE	MAA	125	
J44	JACK - (4) 2X4 SPF STUD GRADE	MAAKDA	124	
J46	JACK - (5) 2X4 SPF STUD GRADE	MAA	124	

LVL PLY TO PLY FASTENING SCHEDULE:

1.A - (2) PLY UP TO AND INCLUDING 11 7/8" TALL; FASTEN PLYS W/ (2) ROWS 16D NAILS AT 12" O.C.
 2.A - (2) PLY 14" TO AND 18" TALL (INCLUSIVE); FASTEN PLYS W/ (3) ROWS 16D NAILS AT 12" O.C.
 3.A - (2) PLY 20" TALL AND OVER; FASTEN PLYS W/ (4) ROWS 16D NAILS AT 12" O.C.
 4.A - (3) PLY UP TO AND INCLUDING 11 7/8" TALL; FASTEN PLYS W/ (2) ROWS 16D NAILS AT 12" O.C. FROM EACH SIDE
 5.A - (3) PLY 14" TO AND 18" TALL (INCLUSIVE); FASTEN PLYS W/ (3) ROWS 16D NAILS AT 12" O.C. FROM EACH SIDE
 6.A - (3) PLY 20" TALL AND OVER; FASTEN PLYS W/ (4) ROWS 16D NAILS AT 12" O.C. FROM EACH SIDE

FIRST FLOOR BEAM/HEADER SCHEDULE					
IDENTIFIER	DESCRIPTION	LENGTH	OPTIONS	ENG. NUM.	REMARKS
B01	INT HEADER - 2X12 - 2 PLY	9'-2 1/2"		III	
B02	INT HEADER - 2X8 - 2 PLY	5'-4"		II3	
B04	BEAM STEEL - W12X26	20'-2"	SRI, SXS, SGB	101	
BO4-2	LVL - 18	15'-5 1/2"	MAA, KDA	124	2 PLY, 2A
PF02-2	LVL - 11-04	14'-11 1/2"	6CB	107	PORTAL FRAME, 2 PLY, 1A

STEEL COLUMN SCHEDULE					
IDENTIFIER	STYLE	HEIGHT	OPTIONS	ENG. NUM.	REMARKS

GYPSUM NOTES RYAN

AT GARAGE:
 GYPSUM BOARD AT COMMON WALLS, CEILINGS, BEAM WRAPS AND SUPPORTS PER STANDARD DETAIL FA-1(b) FIRE ASSEMBLIES OR AS REQUIRED BY LOCAL CODE.

AT STAIRS:
 1/2" GYPSUM BOARD AT UNDERSIDE OF STAIRS AND WALLS IN CLOSET

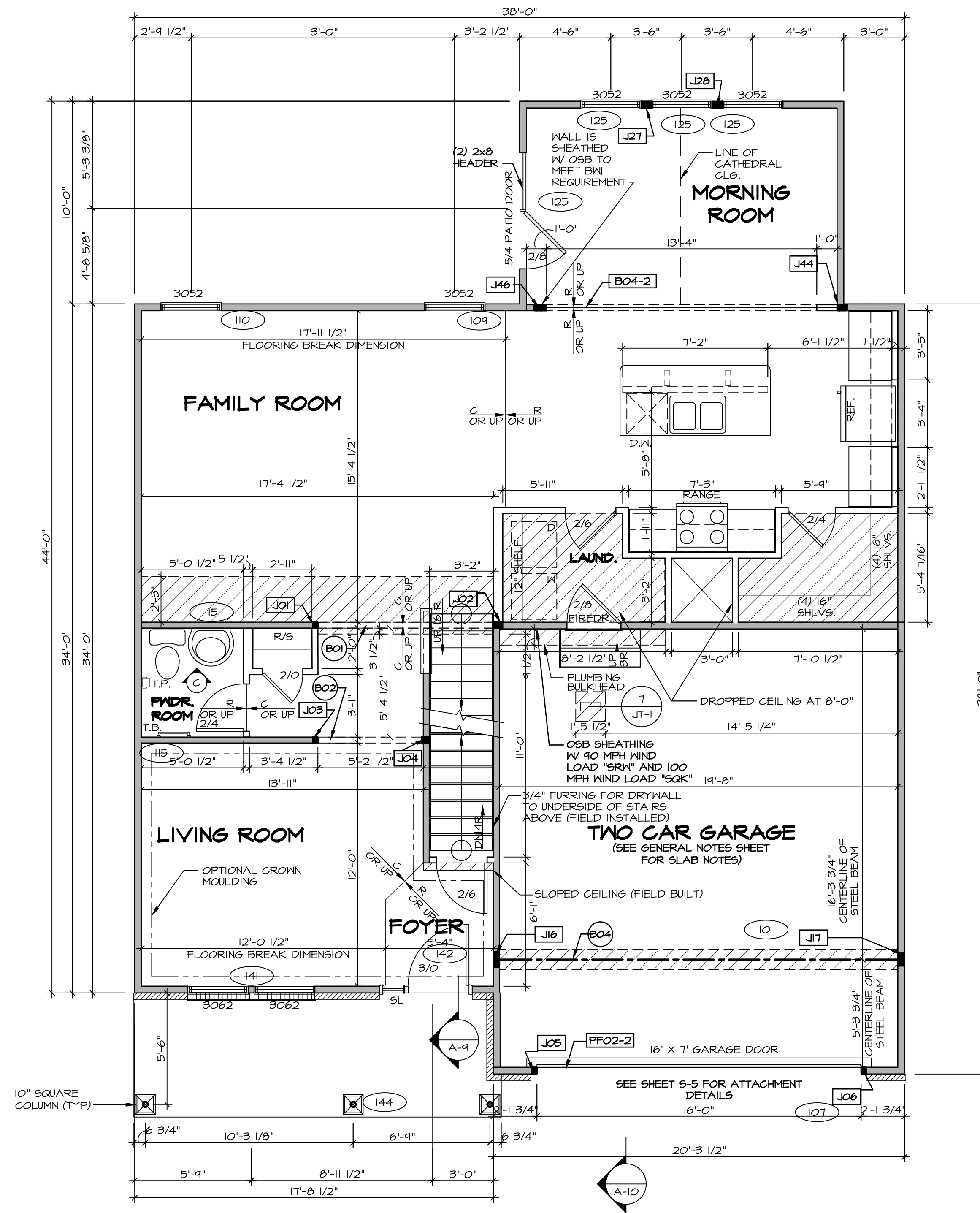
FLOOR PLAN NOTES RYAN

- ALL HEADERS ARE (2) 2x6 W/ 2x4 WALLS OR (3) 2x6 W/ 2x6 WALLS, UNLESS OTHERWISE NOTED.
- ALL HEADERS TO HAVE (1) 2x4 OR 2x6 JACK AND KING STUD EACH END, UNLESS OTHERWISE NOTED.
- ALL EXTERIOR WALLS TO BE 4" W/ OSB OR 3 1/2" W/ T-PLY. ALL INTERIOR WALLS TO BE 3 1/2", UNLESS OTHERWISE NOTED.
- HATCHED AREAS INDICATE DROPPED CEILINGS. ALL DROPPED CEILINGS ARE 12" UNLESS OTHERWISE NOTED.
- SEE BRACED WALL PANEL DETAIL SHEET FOR SPECIAL WALL FRAMING LOCATIONS AND HEADER SIZES, IF APPLICABLE.
- SEE STANDARD DETAIL CATEGORY "IT" SHEET(S) FOR INTERIOR TRIM DETAILS.
- SEE ARCHITECTURAL DETAIL SHEET "AD" FOR HOUSE SPECIFIC INTERIOR TRIM OPTION TABLE.
- ALL WINDOWS HAVE 7'-0 1/2" HEADER HEIGHT UNLESS OTHERWISE NOTED.
- ALL HEADERS IN NON-BEARING WALLS SHALL BE A SINGLE FLAT 2X4 OR 2X6 ATTACHED TO GRIPPLIES ABOVE, UNLESS OTHERWISE NOTED.

LEGEND

- BEARING WALL
- NON BEARING WALL
- INDICATES BEARING FROM POINT-LOAD ABOVE
- JACKS
- BEAM/HEADER
- PAD FOOTING
- STEEL COLUMN
- PORTAL FRAME
- JOIST/TRUSS
- LVL
- ENGINEERING PAGE NUMBER

SEE FC DETAILS FOR FRAMING CONNECTORS



FIRST FLOOR PLAN
 SCALE: 1/4" = 1'-0"

REVISIONS

REV. NO.	DATE	DESCRIPTION
1	07/26/16	TH - DRAWING ALIGNMENT
2	7/24/17	DRH - T-PLY CONVERSION

SET NO. FLOOR 06
 VERSION 06
 DRAWN BY
 DATE:
 OPTION

FLORENCE
 DRAWING TITLE
 FIRST FLOOR PLAN

OPTION DESCRIPTION

33

NVR, Inc., owner, expressly reserves its copyright in these plans. These plans are not to be reproduced, changed, copied, or otherwise used in any way without the prior written consent of NVR, Inc.

NVR
 NVR, Inc.
 Architectural Services
 Architects
 21 Belfrage Ave., A
 Frederick, MD 21702

C:\NVR\Solves\FLORENCE_FLOOR_06.DWG - CH - X283\8/6/2017\Sheets\01 - Specific\33 - A-7 - PLAN - LS.dwg 07/26/18 - 3:16 am

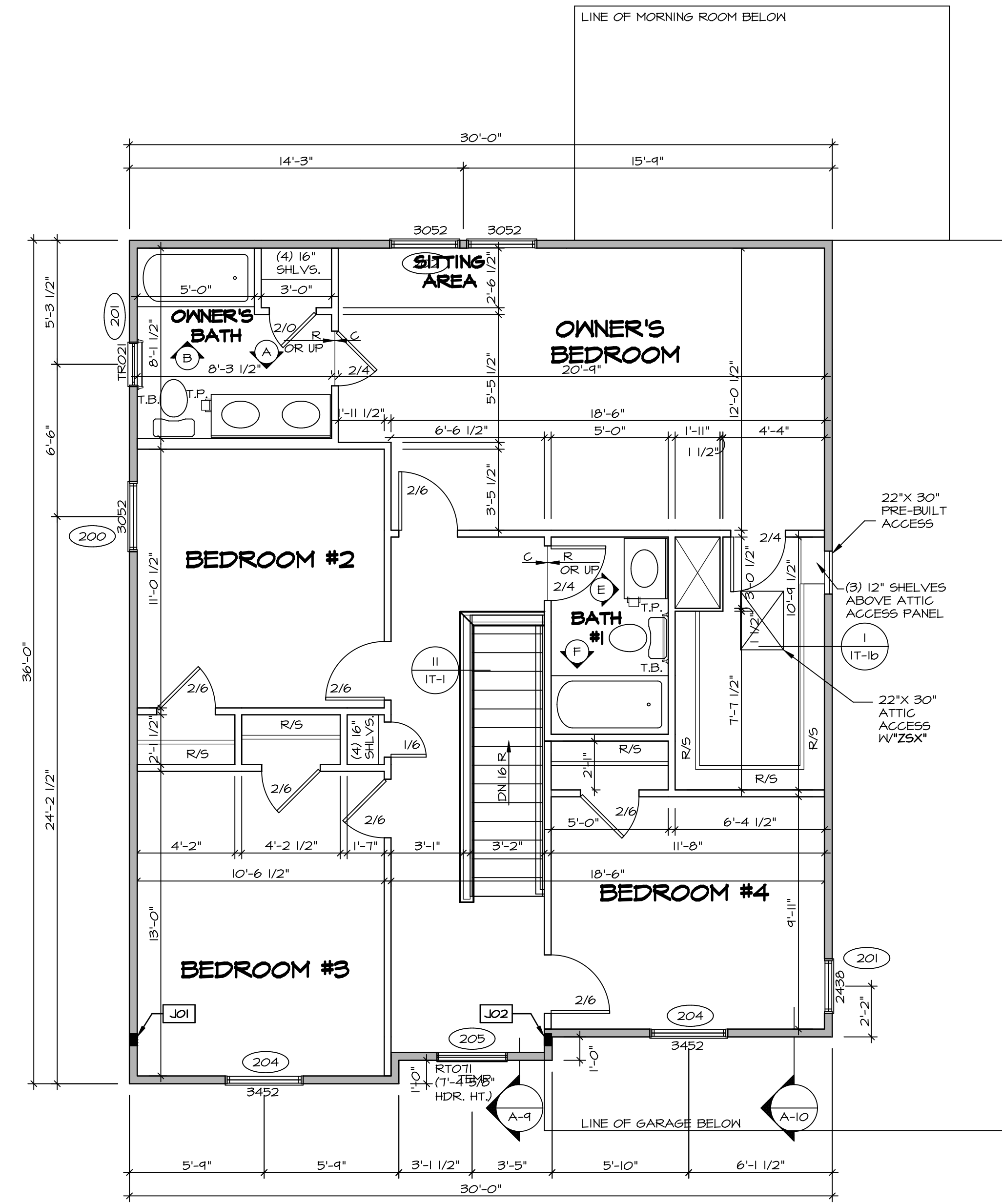
SECOND FLOOR JACK SCHEDULE				
IDENTIFIER	DESCRIPTION	OPTIONS	ENG. NUM.	FIELD INSTALLED
J01	JACK - (4) 2X4 SPH		203	
J02	JACK - (4) 2X4 SPH		203	

FLOOR PLAN NOTES RYAN

- ALL HEADERS ARE (2) 2x6 w/ 2x4 WALLS OR (3) 2x6 w/ 2x6 WALLS, UNLESS OTHERWISE NOTED.
- ALL HEADERS TO HAVE (1) 2x4 OR 2x6 JACK AND KING STUD EACH END, UNLESS OTHERWISE NOTED.
- ALL EXTERIOR WALLS TO BE 4" w/ OSB OR 3 1/2" w/ T-PLY, ALL INTERIOR WALLS TO BE 3 1/2", UNLESS OTHERWISE NOTED.
- HATCHED AREAS INDICATE DROPPED CEILINGS. ALL DROPPED CEILINGS ARE 12" UNLESS OTHERWISE NOTED.
- SEE "BRACED WALL PANEL DETAIL SHEET" FOR SPECIAL WALL FRAMING LOCATIONS AND HEADER SIZES, IF APPLICABLE.
- SEE STANDARD DETAIL CATEGORY "IT" SHEET(S) FOR INTERIOR TRIM DETAILS.
- SEE ARCHITECTURAL DETAIL SHEET "AD" FOR HOUSE SPECIFIC INTERIOR TRIM OPTION TABLE.
- ALL WINDOWS HAVE 7'-0 1/2" HEADER HEIGHT UNLESS OTHERWISE NOTED.
- ALL HEADERS IN NON-BEARING WALLS SHALL BE A SINGLE FLAT 2X4 OR 2X6 ATTACHED TO CRIPPLES ABOVE, UNLESS OTHERWISE NOTED.

LEGEND	
	BEARING WALL
	NON BEARING WALL
	INDICATES BEARING FROM POINT-LOAD ABOVE
	JACKS
	BEAM/HEADER
	PAD FOOTING
	STEEL COLUMN
	PORTAL FRAME
	JOIST/TRUSS
	LVL
	ENGINEERING PAGE NUMBER

SEE FC DETAILS FOR FRAMING CONNECTORS

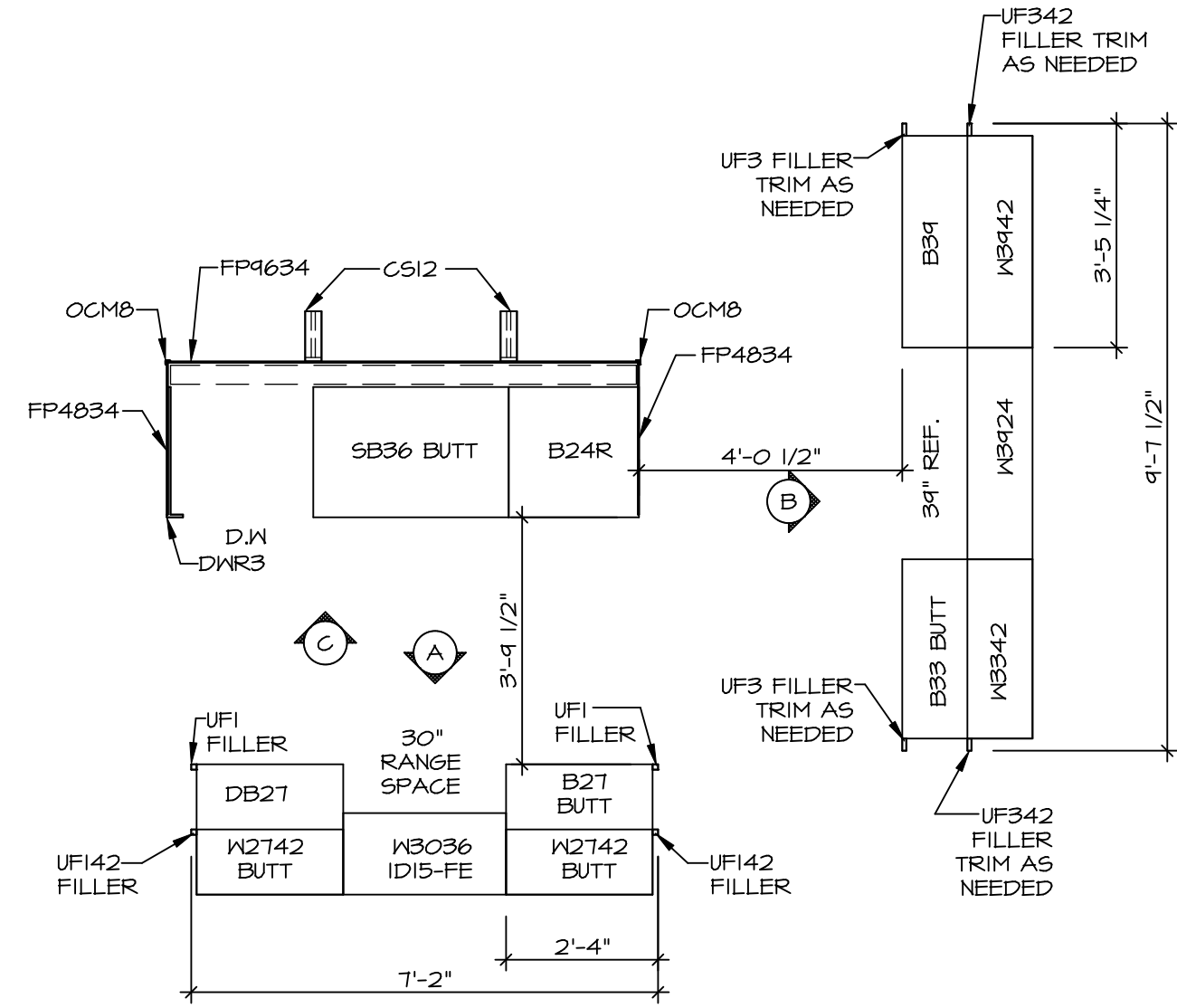


SECOND FLOOR PLAN
SCALE: 1/4" = 1'-0"

SHEET NO.	MODEL	SET NO.	VERSION	DRAWN BY	DATE:	OPTION	REMARKS
A-8	FLORENCE	FL000_06	06				
37							

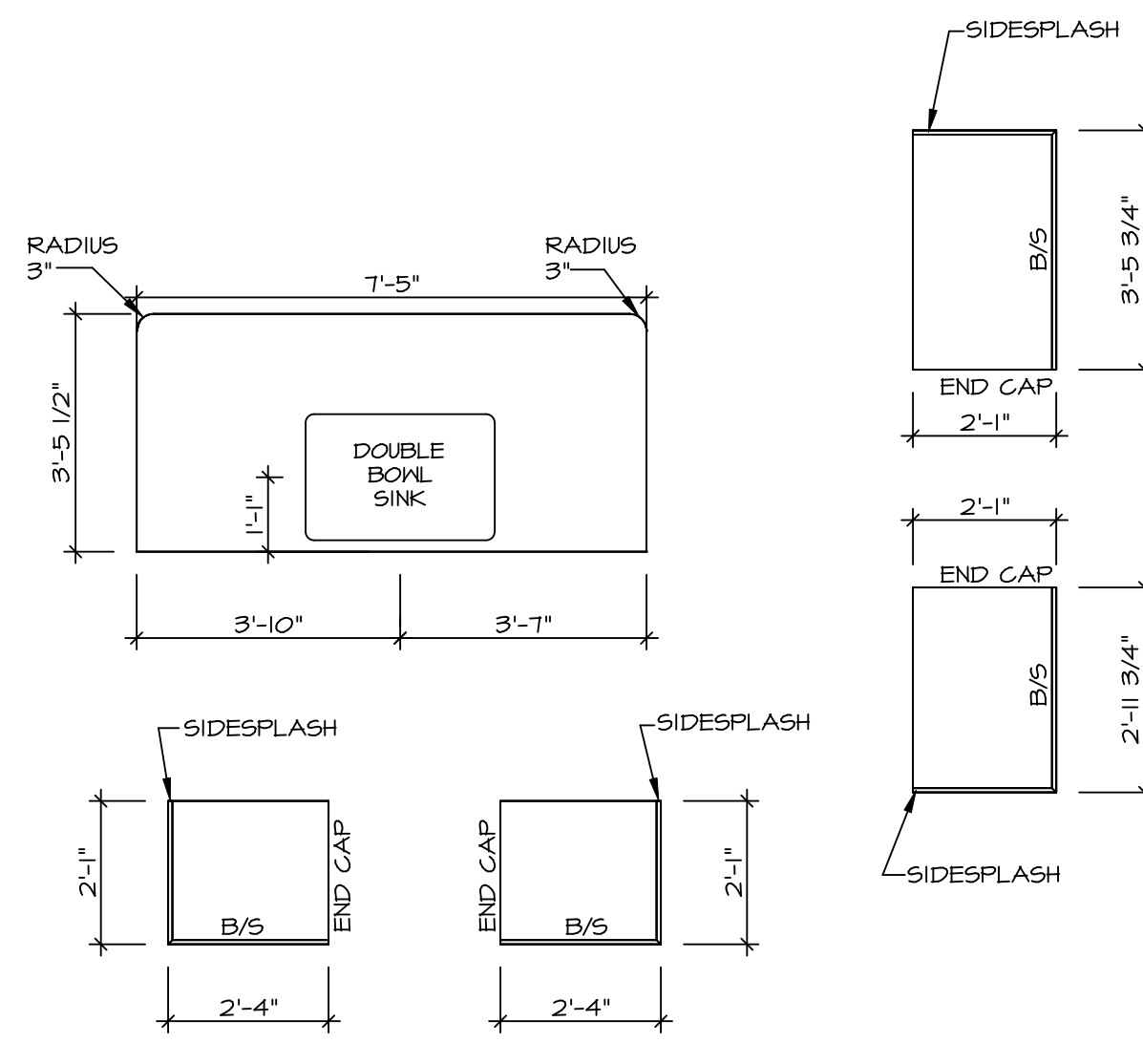


C:\NVR\Solves\FLORENCE_FL000_06\DCY-CH-X283\87672\Sheets\37_A-8_FLN2_LS.dwg 07/26/18 3:16 am



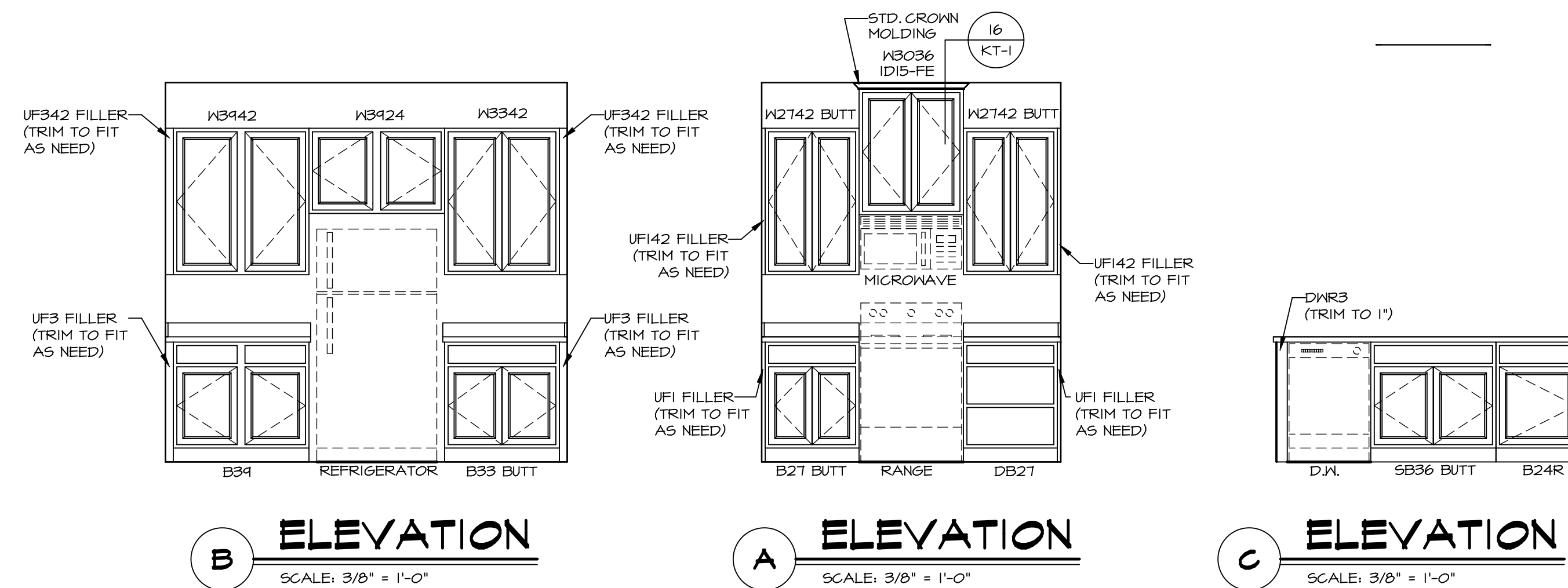
**KITCHEN CABINET
PLAN - KC-3414**

1
A-12 SCALE: 3/8" = 1'-0"



**KITCHEN COUNTERTOP
PLAN - KT-3414**

2
A-12 SCALE: 3/8" = 1'-0"

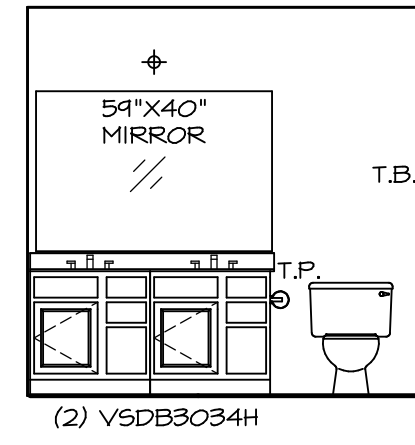


B ELEVATION
SCALE: 3/8" = 1'-0"

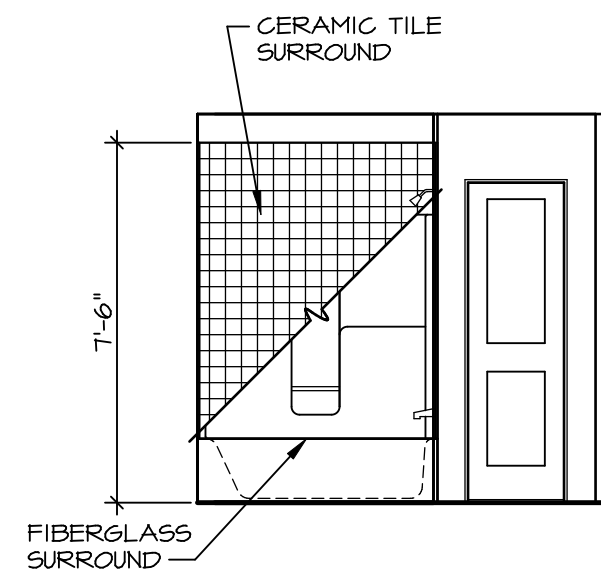
A ELEVATION
SCALE: 3/8" = 1'-0"

C ELEVATION
SCALE: 3/8" = 1'-0"

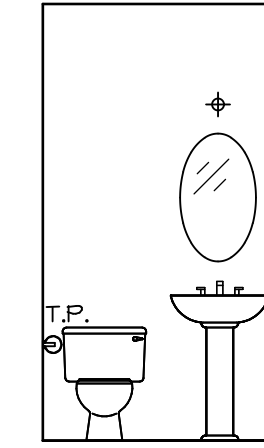
SHEET NO. A-12	MODEL FLORENCE	DRAWING TITLE KITCHEN PLANS AND ELEVATIONS	SET NO. FL000	VERSION 06	DRAWN BY SLK	DATE: 4/21/15	OPTION
			OPTION DESCRIPTION				
REMARKS							
<p>NVR, Inc., owner, expressly reserves its copyright in these drawings. These drawings are not to be reproduced, changed, copied, or used in any way without the written consent of NVR, Inc.</p> <p>NVR NVR, Inc. Architectural Services Architects 21 Park Co. Rd., A Frederick, MD 21702</p>							
<p>C:\NVR\Solves\FLORENCE_FL000_06\DCY-CH-X283\876727\Sheets\A-12_KIT_LS.dwg 07/26/19 3:16 am</p>							



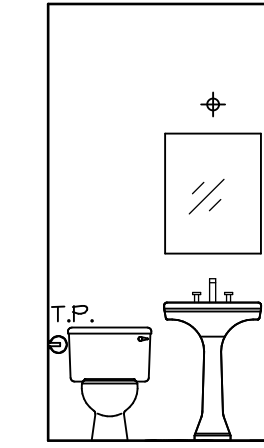
A OWNER'S BATH
SCALE: 1/4" = 1'-0"



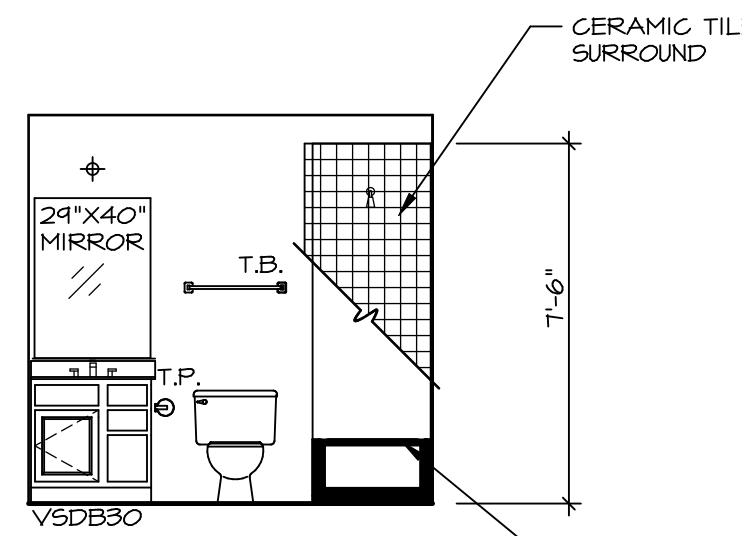
B OWNER'S BATH
SCALE: 1/4" = 1'-0" UPGRADE OWNER'S BATH *AMB*



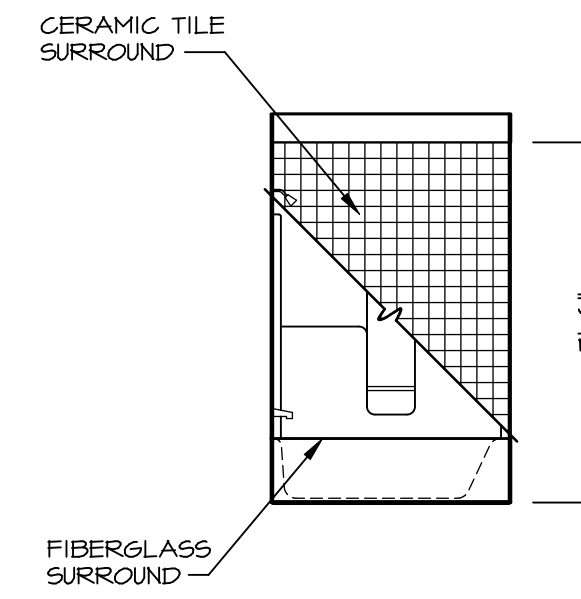
C POWDER ROOM
SCALE: 1/4" = 1'-0" *SZB*



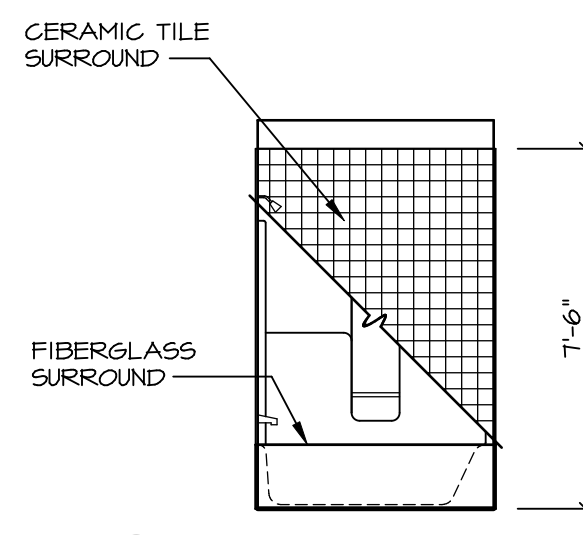
C POWDER ROOM
SCALE: 1/4" = 1'-0" *SZC*



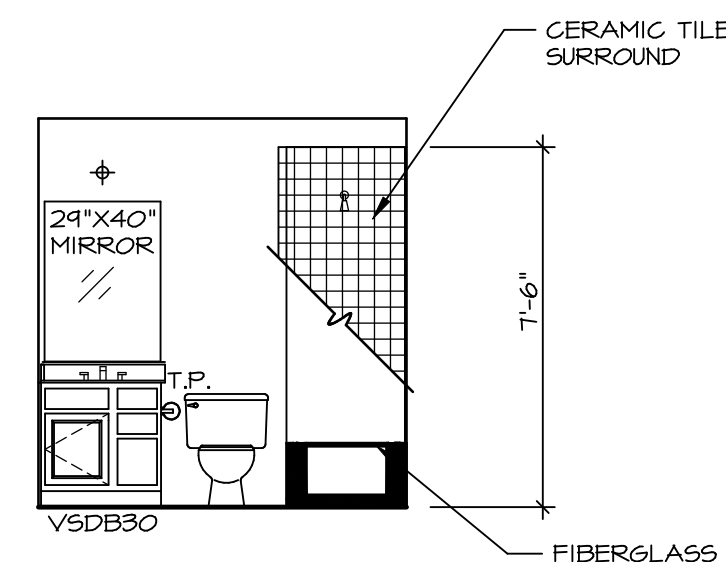
E BATH #1
SCALE: 1/4" = 1'-0"



F BATH #1
SCALE: 1/4" = 1'-0"



H BSMT. BATH
SCALE: 1/4" = 1'-0"



J BSMT. BATH
SCALE: 1/4" = 1'-0"

NOTES:

- TEMPERED GLASS SHOWER ENCLOSURE WITH SWING DOOR OR OPTIONAL SLIDING DOOR BY DIVISION
- TUB ACCESS PANELS PROVIDED AS NEEDED, ALL MATERIALS BY DIVISION
- REFER TO SHEET (IT-2) FOR TUB AND SHOWER DETAILS.
- ALL V5DB24-42 DRAWERS TO BE SET ON RIGHT HAND.
- BATH ELEVATIONS ARE SHOWN PER PLAN.

SHEET NO.	MODEL	SET NO.	FLR00
A-13	FLORENCE	VERSION	06
	DRAWING TITLE	DRAWN BY	
	BATH ELEVATIONS	DATE:	
	OPTION DESCRIPTION	OPTION	
46			



NVR, Inc., owner, expressly reserves its copyright in these plans. These plans are not to be reproduced, changed, copied, or otherwise used in any way without the written consent of NVR, Inc.

REV. NO.	DATE	REMARKS
1	07/26/16	TM - DRAWING ALIGNMENT