

CH X297
SEWER/WATER

1 PLUMBING PLAN
A-5 SCALE: 1/4" = 1'-0"

SHEET NO. A-5	MODEL SIENNA	SET NO. SIECO
	DRAWING TITLE PLUMBING PLAN	VERSION 05
	OPTION DESCRIPTION 20	DRAWN BY DATE: 2/2/2015



NVR, Inc. reserves all rights in this drawing and other property rights in these drawings. No part of these drawings may be reproduced, changed, or copied in any form or by any means, without the written consent of NVR, Inc.

REV. NO.	DATE	REMARKS

CH X297

NO PUMPS

LVL PLY TO PLY FASTENING SCHEDULE:

1A - (2) PLY UP TO AND INCLUDING 11 7/8" TALL; FASTEN PLYS W/ (2) ROWS 16D NAILS AT 12" O.C.
 2A - (2) PLY 14" TO AND 18" TALL (INCLUSIVE); FASTEN PLYS W/ (3) ROWS 16D NAILS AT 12" O.C.
 3A - (2) PLY 20" TALL AND OVER; FASTEN PLYS W/ (4) ROWS 16D NAILS AT 12" O.C.
 4A - (3) PLY UP TO AND INCLUDING 11 7/8" TALL; FASTEN PLYS W/ (2) ROWS 16D NAILS AT 12" O.C. FROM EACH SIDE
 5A - (3) PLY 14" TO AND 18" TALL (INCLUSIVE); FASTEN PLYS W/ (3) ROWS 16D NAILS AT 12" O.C. FROM EACH SIDE
 6A - (3) PLY 20" TALL AND OVER; FASTEN PLYS W/ (4) ROWS 16D NAILS AT 12" O.C. FROM EACH SIDE

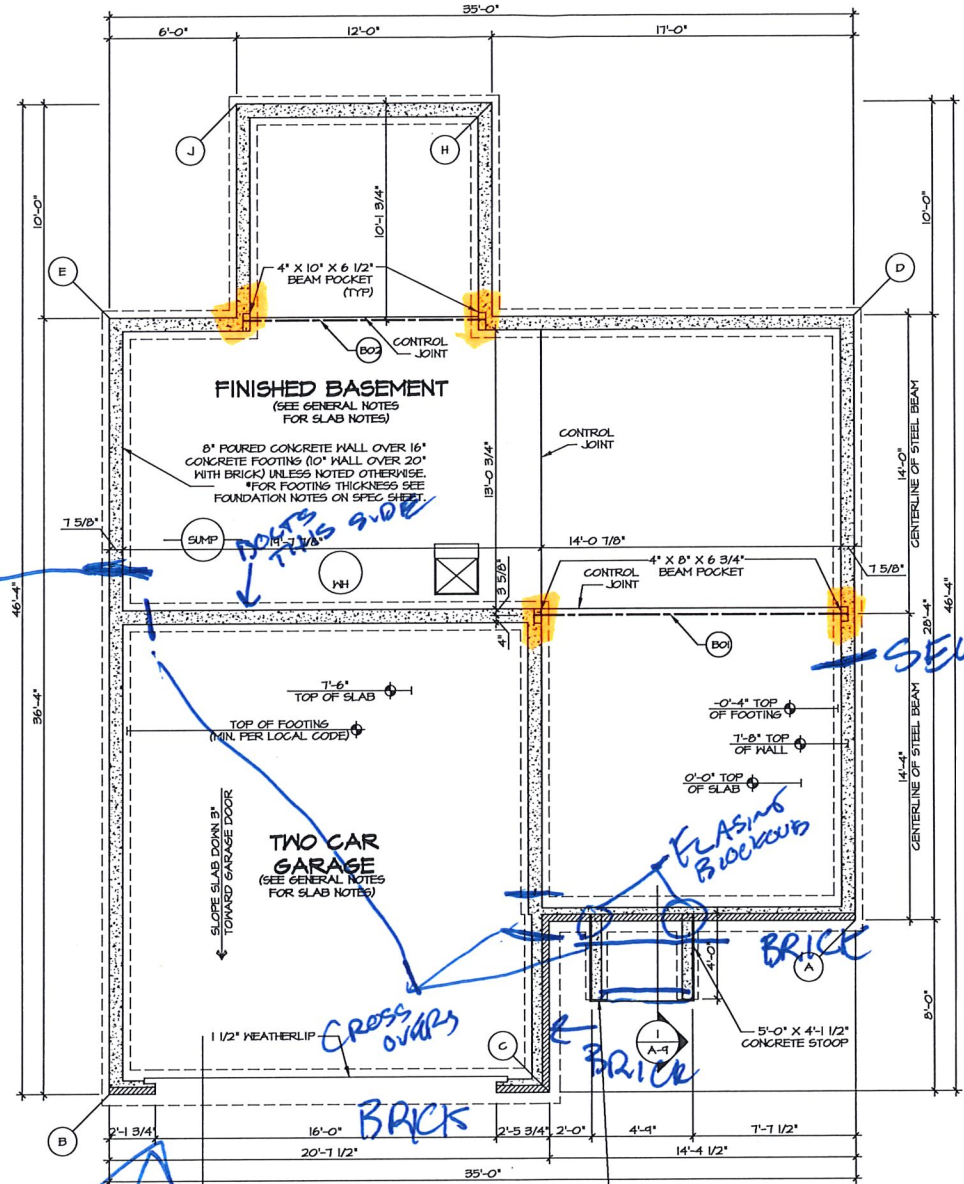
FOUNDATION BEAM/HEADER SCHEDULE

IDENTIFIER	DESCRIPTION	LENGTH	OPTIONS	ENG. NUM.	REMARKS
B01	BEAM STEEL - M8X21	14'-7 7/8"		001	
B02	BEAM STEEL - M8X13	11'-3 3/4"	MAA	005	

LEGEND

- ▬ BEARING WALL
- ▬ NON BEARING WALL
- ⊗ INDICATES BEARINGS FROM POINT-LOAD ABOVE
- ⊥ JACKS
- ⊖ BEAM/HEADER
- ▭ PAD FOOTING
- ◇ STEEL COLUMN
- ⊗ PORTAL FRAME
- ⊗ JOIST/TRUSS
- ▬ LVL

- FOUNDATION NOTES - BASEMENT
- FOUNDATION UNDER HABITABLE SPACE.
 - CONCRETE SLAB ON 6 MIL VAPOR BARRIER OVER SUB-BASE (SEE SPEC SHEET FOR SLAB NOTES)
 - SLAB UNDER GARAGE.
 - UNEXCAVATED WITH CONCRETE SLAB ON VAPOR BARRIER OVER SUB-BASE (SEE SPEC SHEET FOR SLAB NOTES)
 - SEE SHEET (A-4) FOR FOUNDATION CONNECTION INFORMATION.
 - OPTIONAL EGRESS WINDOW - LOCATION MAY VARY DUE TO GRADE OR OPTIONS ABOVE WINDOW WELL REQUIRED W/ CERTAIN GRADE CONDITIONS (SEE SPEC SHEET FOR ADDITIONAL INFO.)
 - SLAB LEDGE LOCATIONS VARY W/ GRADE BEAM(S) ORIENTATION SEE 6B-1 FOR DETAILS.



DAVE BLISS
513 462 1149

FOOTINGS: 6.00
WALLS: 33.75

1 FOUNDATION PLAN
SCALE: 1/4" = 1'-0"

FOUNDATION DIAGONALS

A		B	
A	0'	A	35'-10 21/32"
B	35'-10 21/32"	B	0'
C	16'-5 13/32"	C	20'-7 1/2"
D	28'-4"	D	50'-5 3/8"
E	45'-0 3/8"	E	36'-4"
H	41'-11 7/32"	H	44'-8 15/32"
J	48'-0 13/16"	J	46'-8 21/32"

4 STRAPS ON GARAGE

REVISIONS

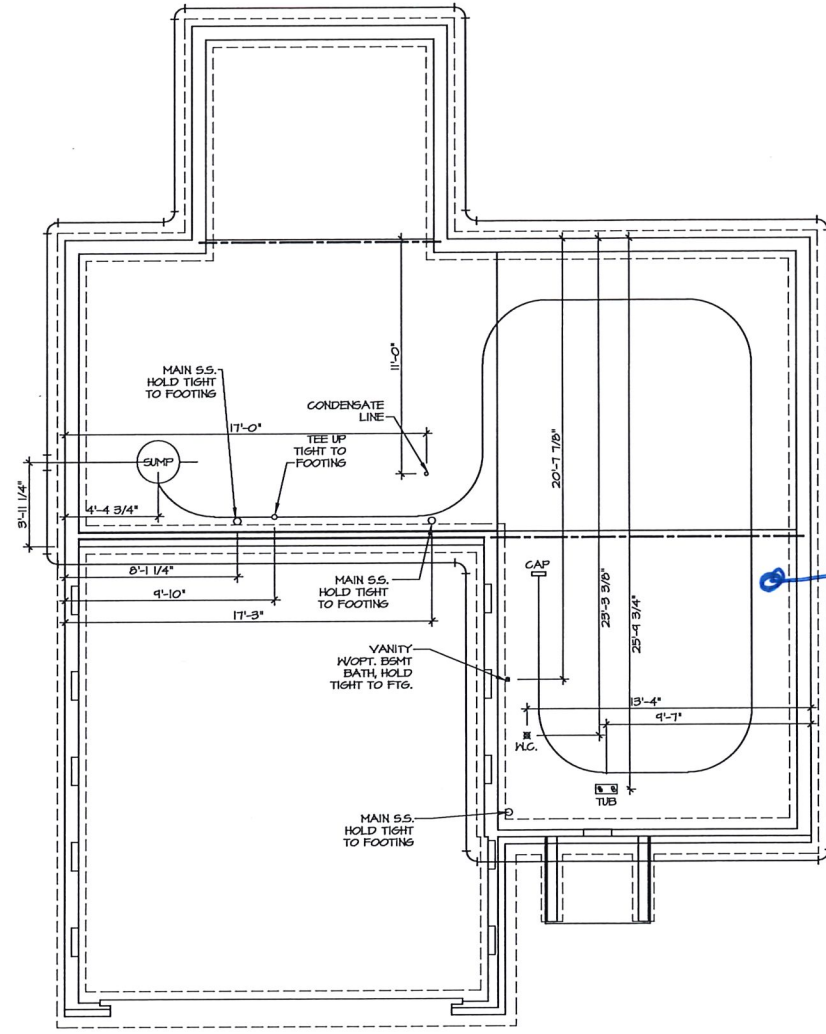
REV. NO.	DATE	DESCRIPTION
1	02/22/2015	ISSUE FOR PERMITS

NVR, Inc. reserves all copyright and other property rights in these drawings, and any reproduction, distribution, or use in any form or manner whatsoever, without the written consent of NVR, Inc. is prohibited.

NVR
Architectural Services
21 Byrd Court, Suite A
Frederick, MD 21702

SET NO. S1E00
VERSION C5
DRAWN BY
DATE: 2/22/2015
OPTION

SHEET NO. A-2
MODEL SIENNA
DRAWING TITLE FOUNDATION PLAN
OPTION DESCRIPTION
13



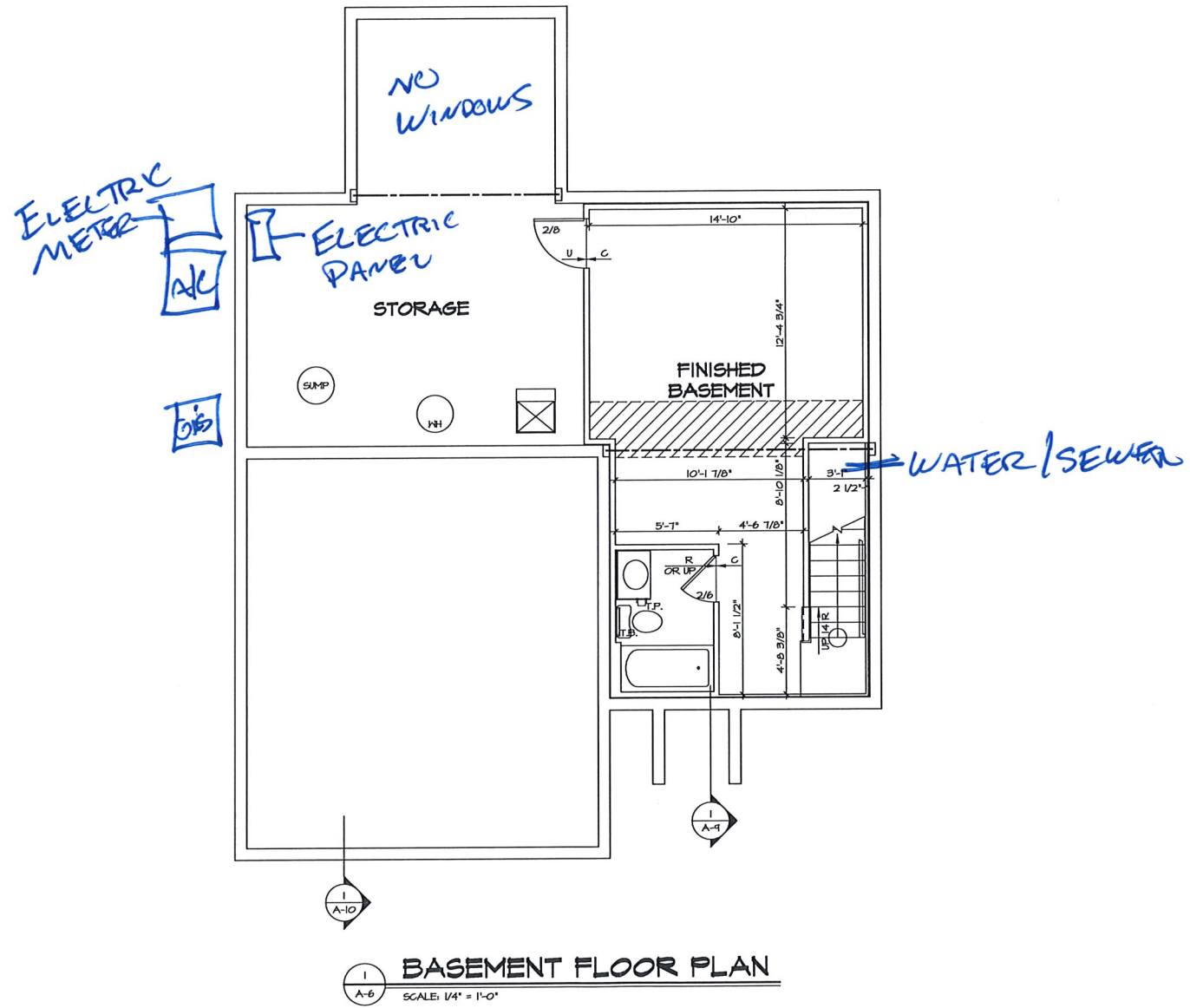
CH X207
SEWER/WATER

1 PLUMBING PLAN
A-5 SCALE: 1/4" = 1'-0"

SHEET NO. A-5	MODEL SIENNA	SET NO. S1E00 VERSION 05	REV. NO. DATE	REMARKS
	DRAWING TITLE PLUMBING PLAN	DRAWN BY DATE: 2/2/2015 OPTION		
20	OPTION DESCRIPTION			



NVR, Inc., owner, expressly warrants that the drawings, specifications and other property rights in these plans. These plans are not to be used for any other project without the written consent of NVR, Inc.



LEGEND	
	BEARING WALL
	NON BEARING WALL
	INDICATES BEARING FROM POINT-LOAD ABOVE
	JACKS
	BEAM/HEADER
	PAD FOOTING
	STEEL COLUMN
	PORTAL FRAME
	JOIST/TRUSS
	LVL

- FLOOR PLAN NOTES**
- ALL HEADERS ARE (2) 2x6 W/ 2x4 WALLS OR (3) 2x6 W/ 2x6 WALLS, UNLESS OTHERWISE NOTED.
 - ALL HEADERS TO HAVE (1) 2x4 OR 2x6 JACK EACH END, UNLESS OTHERWISE NOTED.
 - ALL EXTERIOR WALLS TO BE 4" AND ALL INTERIOR WALLS TO BE 9 1/2", UNLESS OTHERWISE NOTED.
 - HATCHED AREAS INDICATE DROPPED CEILINGS. ALL DROPPED CEILINGS ARE 12" UNLESS OTHERWISE NOTED.
 - SEE "BRACED WALL PANEL DETAIL SHEET" FOR SPECIAL WALL FRAMING LOCATIONS AND HEADER SIZES, IF APPLICABLE.
 - ALL WINDOWS HAVE 1'-0 1/2" HEADER HEIGHT UNLESS OTHERWISE NOTED.

GYPSON NOTES

AT GARAGE:
 GYPSON BOARD AT COMMON WALLS, CEILINGS, BEAM WRAPS AND SUPPORTS AS REQUIRED BY LOCAL CODE.

AT STAIRS:
 1/2" GYPSON BOARD AT UNDERSIDE OF STAIRS AND HALLS IN CLOSET

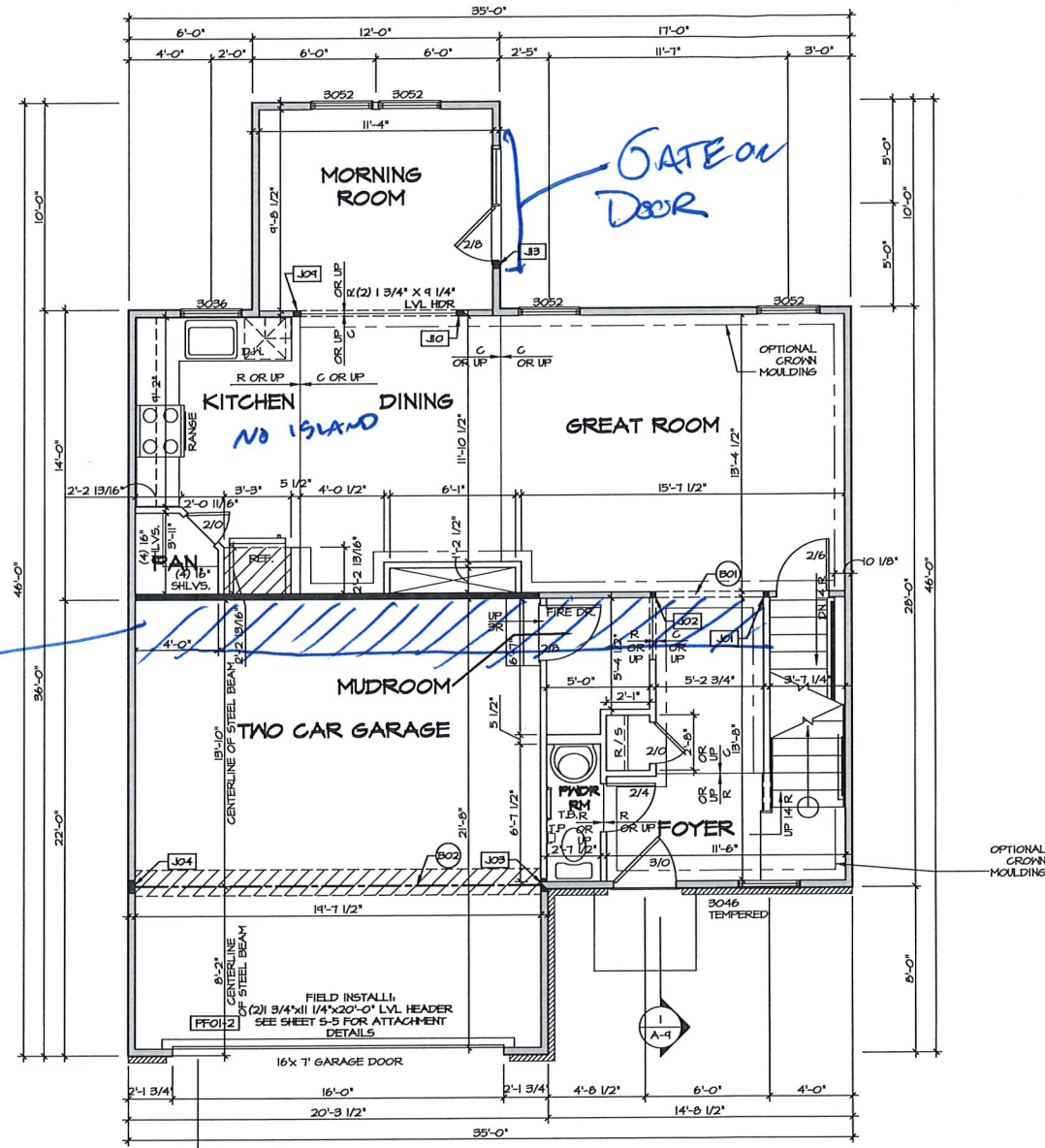
REV. NO.	DATE	REMARKS
1	02/27/18	DRAWING ALIGNMENT

NVR, Inc. does not, expressly or otherwise, warrant, represent, or guarantee the accuracy, completeness, or reliability of the information contained herein. The user of this information assumes all liability for any errors or omissions. NVR, Inc. is not responsible for any third party's use of this information without the written consent of NVR, Inc.



SET NO. SIECO	VERSION 05
DRAWN BY	DATE: 2/2/2015
OPTION	

SHEET NO.	MODEL	SIENNA
A-6	DRAWING TITLE	BASEMENT FLOOR PLAN
23	OPTION DESCRIPTION	



FIRST FLOOR PLAN
SCALE: 1/4" = 1'-0"

LEGEND

- BEARING WALL
- - - NON BEARING WALL
- ⊗ INDICATES BEARING FROM POINT-LOAD ABOVE
- J JACKS
- B BEAM/HEADER
- F PAD FOOTING
- C STEEL COLUMN
- X PORTAL FRAME
- X JOIST/TRUSS
- L LVL

- FLOOR PLAN NOTES**
- ALL HEADERS ARE (2) 2x6 w/ 2x4 WALLS OR (3) 2x6 w/ 2x6 WALLS, UNLESS OTHERWISE NOTED.
 - ALL HEADERS TO HAVE (1) 2x4 OR 2x6 JACK AND KING STUD EACH END, UNLESS OTHERWISE NOTED.
 - ALL EXTERIOR WALLS TO BE 4" w/ OSB OR 3 1/2" w/ T-PLY, ALL INTERIOR WALLS TO BE 3 1/2", UNLESS OTHERWISE NOTED.
 - HATCHED AREAS INDICATE DROPPED CEILINGS. ALL DROPPED CEILINGS ARE 12" UNLESS OTHERWISE NOTED.
 - SEE "BRACED WALL PANEL DETAIL SHEET" FOR SPECIAL WALL FRAMING LOCATIONS AND HEADER SIZES, IF APPLICABLE.
 - ALL WINDOWS HAVE 1"-0 1/2" HEADER HEIGHT UNLESS OTHERWISE NOTED.
 - ALL HEADERS IN NON-BEARING WALLS SHALL BE A SINGLE FLAT 2x4 OR 2x6 ATTACHED TO CRIPPLES ABOVE, UNLESS OTHERWISE NOTED.

- GYPSUM NOTES**
- AT GARAGE:
GYPSUM BOARD AT COMMON WALLS, CEILINGS, BEAM WRAPS AND SUPPORTS AS REQUIRED BY LOCAL CODE.
- AT STAIRS:
1/2" GYPSUM BOARD AT UNDERSIDE OF STAIRS AND WALLS IN CLOSET

FIRST FLOOR JACK SCHEDULE

IDENTIFIER	DESCRIPTION	OPTIONS	ENS. NUM.	FIELD INSTALLED
J01	JACK - (2) 2X4 SFF STUD GRADE		103	
J02	JACK - (2) 2X4 SFF STUD GRADE		103	
J03	JACK - (3) 2X4 SFF	6CB / 6CG	103	
J04	JACK - (3) 2X4 SFF	6CB / 6CG	103	
J10	JACK - (3) 2X4 SFF STUD GRADE	MAA	103	
J10	JACK - (3) 2X4 SFF STUD GRADE	MAA	103	
J13	JACK - (3) 2X4 SFF STUD GRADE	MAA / 5RM	116	

- LVL PLY TO PLY FASTENING SCHEDULE:**
- 1A - (2) PLY UP TO AND INCLUDING 11 7/8" TALL, FASTEN PLYS W/ (2) ROWS 16D NAILS AT 12" O.C.
 - 2A - (2) PLY 14" TO AND INCLUDING 18" TALL (INCLUSIVE), FASTEN PLYS W/ (3) ROWS 16D NAILS AT 12" O.C.
 - 3A - (2) PLY 20" TALL AND OVER, FASTEN PLYS W/ (4) ROWS 16D NAILS AT 12" O.C.
 - 4A - (3) PLY UP TO AND INCLUDING 11 7/8" TALL, FASTEN PLYS W/ (2) ROWS 16D NAILS AT 12" O.C. FROM EACH SIDE
 - 5A - (3) PLY 14" TO AND INCLUDING 18" TALL (INCLUSIVE), FASTEN PLYS W/ (3) ROWS 16D NAILS AT 12" O.C. FROM EACH SIDE
 - 6A - (3) PLY 20" TALL AND OVER, FASTEN PLYS W/ (4) ROWS 16D NAILS AT 12" O.C. FROM EACH SIDE

FIELD INSTALLED FIRST FLOOR BEAM/HEADER SCHEDULE

IDENTIFIER	DESCRIPTION	LENGTH	OPTIONS	ENS. NUM.	REMARKS
B01	INT HEADER - 2X6 - 2 PLY	5'-8 3/4"		103	
B02	BEAM STEEL - W12X26	20'-2"	SRI / 5XS / FBA / FGA	105	
PF01-2	LVL - II-04	20'-0"	6CB	114	PORTAL FRAME, 2 PLY, 1A

REVISIONS

REV. NO.	DATE	DESCRIPTION
1	09/09/16	DL - DRAWING ALIGNMENT
2	7/17/17	DLR - T-PLY CONVERSION

NVR, Inc. owner, expressly reserves the common law copyright in this drawing. No part of this drawing may be reproduced, stored in a retrieval system, or transmitted in any form or by any means, electronic, mechanical, photocopying, recording, or by any information storage and retrieval system, without the prior written consent of NVR, Inc.



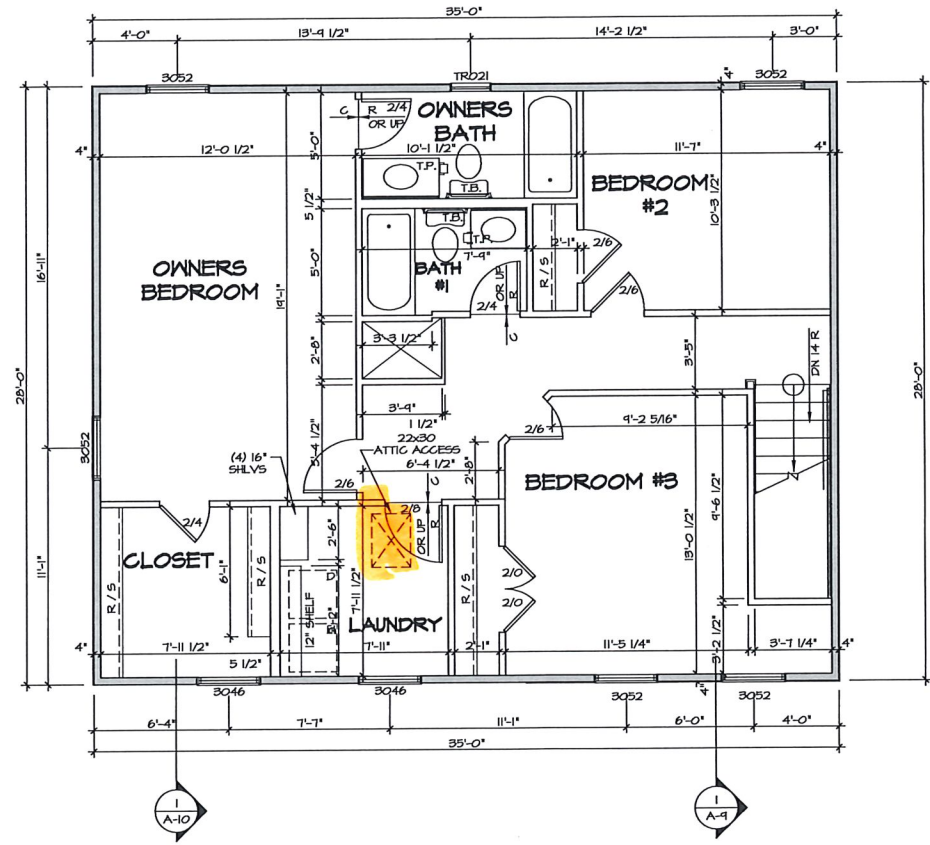
SET NO. SIECO
VERSION 03
DRAWN BY
DATE: 2/22/2015
OPTION

MODEL: SIENNA
DRAWING TITLE: FIRST FLOOR PLAN
OPTION DESCRIPTION:
SHEET NO. A-7
24

LEGEND

	BEARING WALL
	NON BEARING WALL
	INDICATES BEARING FROM POINT-LOAD ABOVE
	JACKS
	BEAMHEADER
	PAD FOOTING
	STEEL COLUMN
	PORTAL FRAME
	JOIST/TRUSS
	LVL.

- FLOOR PLAN NOTES**
1. ALL HEADERS ARE (2) 2x6 W/ 2x4 WALLS OR (3) 2x6 W/ 2x6 WALLS, UNLESS OTHERWISE NOTED.
 2. ALL HEADERS TO HAVE (1) 2x4 OR 2x6 JACK AND KING STUD EACH END, UNLESS OTHERWISE NOTED.
 3. ALL EXTERIOR WALLS TO BE 4" W/ OSB OR 3 1/2" W/ T-PLY, ALL INTERIOR WALLS TO BE 3 1/2", UNLESS OTHERWISE NOTED.
 4. HATCHED AREAS INDICATE DROPPED CEILING. ALL DROPPED CEILING ARE 12" UNLESS OTHERWISE NOTED. SEE "BRACED WALL PANEL DETAIL SHEET" FOR SPECIAL WALL FRAMING LOCATIONS AND HEADER SIZES, IF APPLICABLE.
 5. ALL WINDOWS HAVE 1'-0 1/2" HEADER HEIGHT UNLESS OTHERWISE NOTED.
 6. ALL HEADERS IN NON-BEARING WALLS SHALL BE A SINGLE FLAT 2x4 OR 2x6 ATTACHED TO CRIPPLES ABOVE, UNLESS OTHERWISE NOTED.



1 SECOND FLOOR PLAN
SCALE: 1/4" = 1'-0"

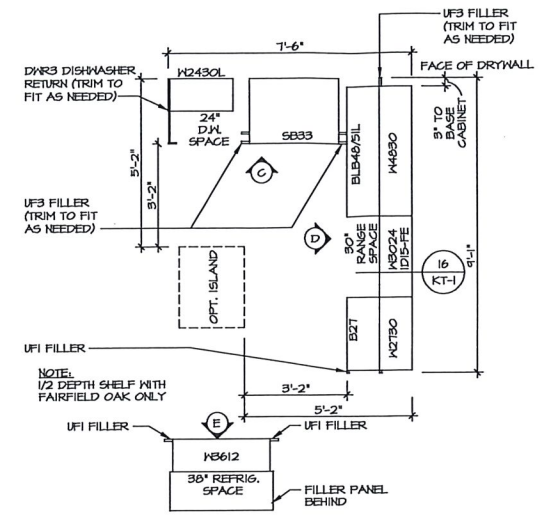
REMARKS

REV. NO.	DATE	DESCRIPTION
1	02/02/15	N.L. - DRAWING ALIGNMENT
2	7/7/17	DRH - T-PLY CONVERSION

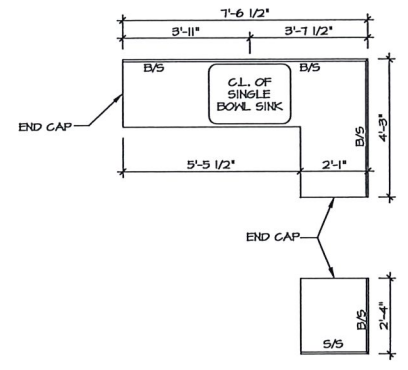
NVR, Inc. does not warrant, represent, or make any other property right in these drawings. No part of these drawings may be reproduced, changed, or copied in any form or manner whatsoever, without the prior written consent of NVR, Inc.



SHEET NO.	A-8
MODEL	SIENNA
DRAWING TITLE	SECOND FLOOR PLAN
OPTION DESCRIPTION	
SET NO. SIECO	05
VERSION	05
DRAWN BY	
DATE	2/2/2015
OPTION	
SHEET NO.	26

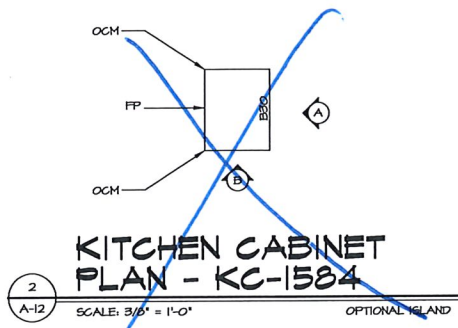


1 CABINET PLAN - KC-1924
 A-12 SCALE: 3/8" = 1'-0" STANDARD KITCHEN w/ 30" WALL CABINETS

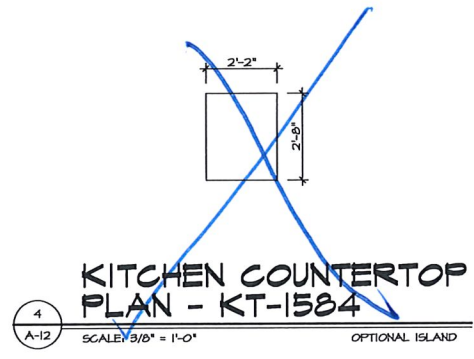


3 COUNTERTOP PLAN - KT-1924
 A-12 SCALE: 3/8" = 1'-0" STANDARD KITCHEN w/ 30" WALL CABINETS

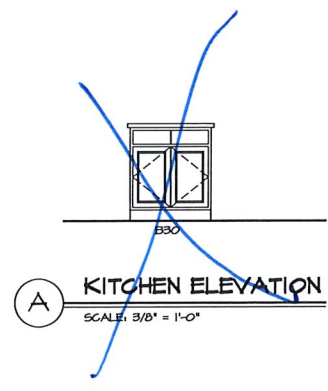
REVERSE



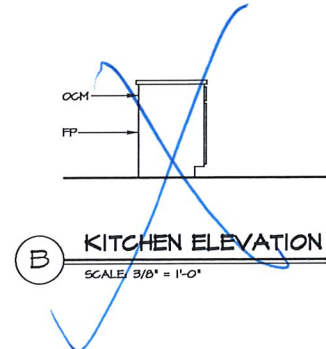
2 KITCHEN CABINET PLAN - KC-1584
 A-12 SCALE: 3/8" = 1'-0" OPTIONAL ISLAND



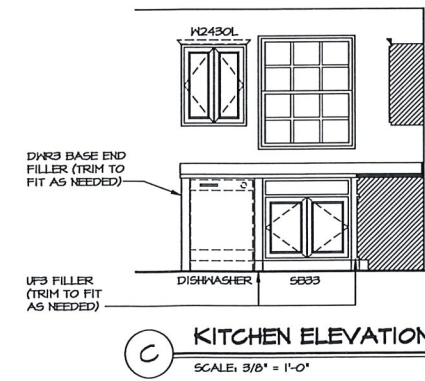
4 KITCHEN COUNTERTOP PLAN - KT-1584
 A-12 SCALE: 3/8" = 1'-0" OPTIONAL ISLAND



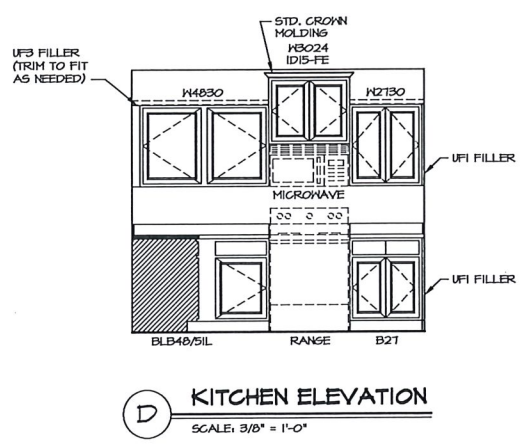
A KITCHEN ELEVATION
 SCALE: 3/8" = 1'-0"



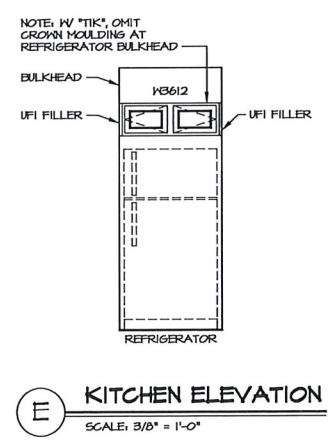
B KITCHEN ELEVATION
 SCALE: 3/8" = 1'-0"



C KITCHEN ELEVATION
 SCALE: 3/8" = 1'-0"



D KITCHEN ELEVATION
 SCALE: 3/8" = 1'-0"



E KITCHEN ELEVATION
 SCALE: 3/8" = 1'-0"

REV. NO.	DATE	REMARKS
1	12/21/15	AS2 INTERNAL AUDIT
2	12/23/16	DPV - STANDARD DETAILS 9.0

NVR
 NVR, Inc.
 Architectural Services
 21 Bethesda Avenue, Suite A
 Frederick, MD 21702

SHEET NO. A-12	SET NO. S1E00 VERSION 05 DRAWN BY DATE: 2/2/2015 OPTION
MODEL SIENNA DRAWING TITLE KITCHENS	OPTION DESCRIPTION
	32