



**LEGEND**

	BEARING WALL
	NON BEARING WALL
	INDICATES BEARING FROM POINT-LOAD ABOVE
	JACKS
	BEAM/HEADER
	PAD FOOTING
	STEEL COLUMN
	PORTAL FRAME
	JOIST/TRUSS
	LVL
	ENGINEERING PAGE NUMBER

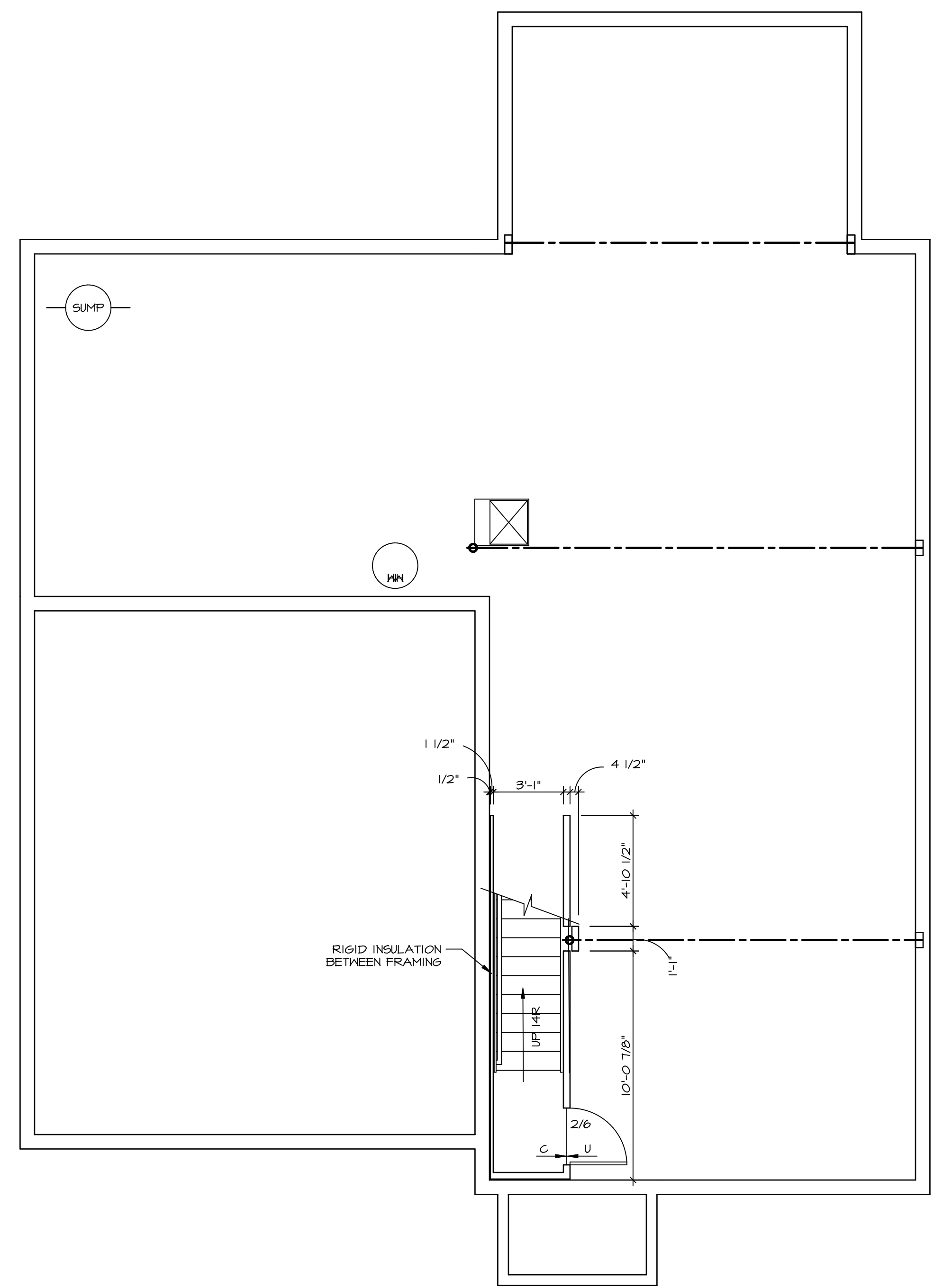
SEE FC DETAILS FOR FRAMING CONNECTORS

- FLOOR PLAN NOTES**
- ALL HEADERS ARE (2) 2x6 w/ 2x4 WALLS OR (3) 2x6 w/ 2x6 WALLS, UNLESS OTHERWISE NOTED.
  - ALL HEADERS TO HAVE (1) 2x4 OR 2x6 JACK EACH END, UNLESS OTHERWISE NOTED.
  - ALL EXTERIOR WALLS TO BE 4" AND ALL INTERIOR WALLS TO BE 3 1/2", UNLESS OTHERWISE NOTED.
  - HATCHED AREAS INDICATE DROPPED CEILING. ALL DROPPED CEILING ARE 12" UNLESS OTHERWISE NOTED.
  - SEE "BRACED WALL PANEL DETAIL SHEET" FOR SPECIAL WALL FRAMING LOCATIONS AND HEADER SIZES, IF APPLICABLE.
  - SEE STANDARD DETAIL CATEGORY "IT" SHEET(S) FOR INTERIOR TRIM DETAILS.
  - SEE ARCHITECTURAL DETAIL SHEET "AD" FOR HOUSE SPECIFIC INTERIOR TRIM OPTION TABLE.
  - ALL WINDOWS HAVE T-O 1/2" HEADER HEIGHT UNLESS OTHERWISE NOTED.

**GYPSUM NOTES**

AT GARAGE:  
GYPSUM BOARD AT COMMON WALLS, CEILING, BEAM WRAPS AND SUPPORTS PER STANDARD DETAIL FA-1(b) FIRE ASSEMBLIES OR AS REQUIRED BY LOCAL CODE.

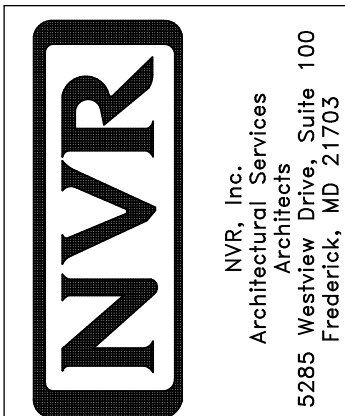
AT STAIRS:  
1/2" GYPSUM BOARD AT UNDERSIDE OF STAIRS AND WALLS IN CLOSET



**BASEMENT FLOOR PLAN**  
SCALE: 1/4" = 1'-0"

SHEET NO. <b>A-6</b>	MODEL <b>NAPLES</b>	SET NO. NAPOO	REV. NO. 1	DATE 08/07/16	REMARKS
	DRAWING TITLE <b>BASEMENT FLOOR PLAN</b>	VERSION 06			
OPTION DESCRIPTION <b>31</b>	DRAWN BY TN	DATE: 05/22/15			
		OPTION			

NVR, Inc., owner, expressly reserves its copyright in these plans. These plans are not to be reproduced, changed, copied in any way, or used for any other purpose without the written consent of NVR, Inc.



**LEGEND**

- BEARING WALL
  - NON BEARING WALL
  - INDICATES BEARING FROM POINT LOAD ABOVE
  - JACKS
  - BEAM/HEADER
  - PAD FOOTINGS
  - STEEL COLUMN
  - PORTAL FRAME
  - JOIST/TRUSS
  - LVL
  - ENGINEERING PAGE NUMBER
- SEE FG DETAILS FOR FRAMING CONNECTORS

**FLOOR PLAN NOTES**

1. ALL HEADERS ARE (2) 2x6 w/ 2x4 WALLS OR (3) 2x6 w/ 2x6 WALLS, UNLESS OTHERWISE NOTED.
2. ALL HEADERS TO HAVE (1) 2x4 OR 2x6 JACK AND KING STUD EACH END, UNLESS OTHERWISE NOTED.
3. ALL EXTERIOR WALLS TO BE 4" w/ OSB OR 3 1/2" w/ T-PLY, ALL INTERIOR WALLS TO BE 3 1/2", UNLESS OTHERWISE NOTED.
4. HATCHED AREAS INDICATE DROPPED CEILING. ALL DROPPED CEILING ARE 12" UNLESS OTHERWISE NOTED.
5. SEE "BRACED WALL PANEL DETAIL SHEET" FOR SPECIAL WALL FRAMING LOCATIONS AND HEADER SIZES, IF APPLICABLE.
6. SEE STANDARD DETAIL CATEGORY "IT" SHEET(S) FOR INTERIOR TRIM DETAILS.
7. SEE ARCHITECTURAL DETAIL SHEET "AD" FOR HOUSE SPECIFIC INTERIOR TRIM OPTION TABLE.
8. ALL WINDOWS HAVE 7'-0 1/2" HEADER HEIGHT UNLESS OTHERWISE NOTED.
9. ALL HEADERS IN NON-BEARING WALLS SHALL BE A SINGLE FLAT 2x4 OR 2x6 ATTACHED TO GRIFFLES ABOVE, UNLESS OTHERWISE NOTED.

**GYPSUM NOTES**

- AT GARAGE:**  
GYPSUM BOARD AT COMMON WALLS, CEILING, BEAM WRAPS AND SUPPORTS PER STANDARD DETAIL FA-(b) FIRE ASSEMBLIES OR AS REQUIRED BY LOCAL CODE.
- AT STAIRS:**  
1/2" GYPSUM BOARD AT UNDERSIDE OF STAIRS AND WALLS IN CLOSET

**LVL PLY TO PLY FASTENING SCHEDULE:**

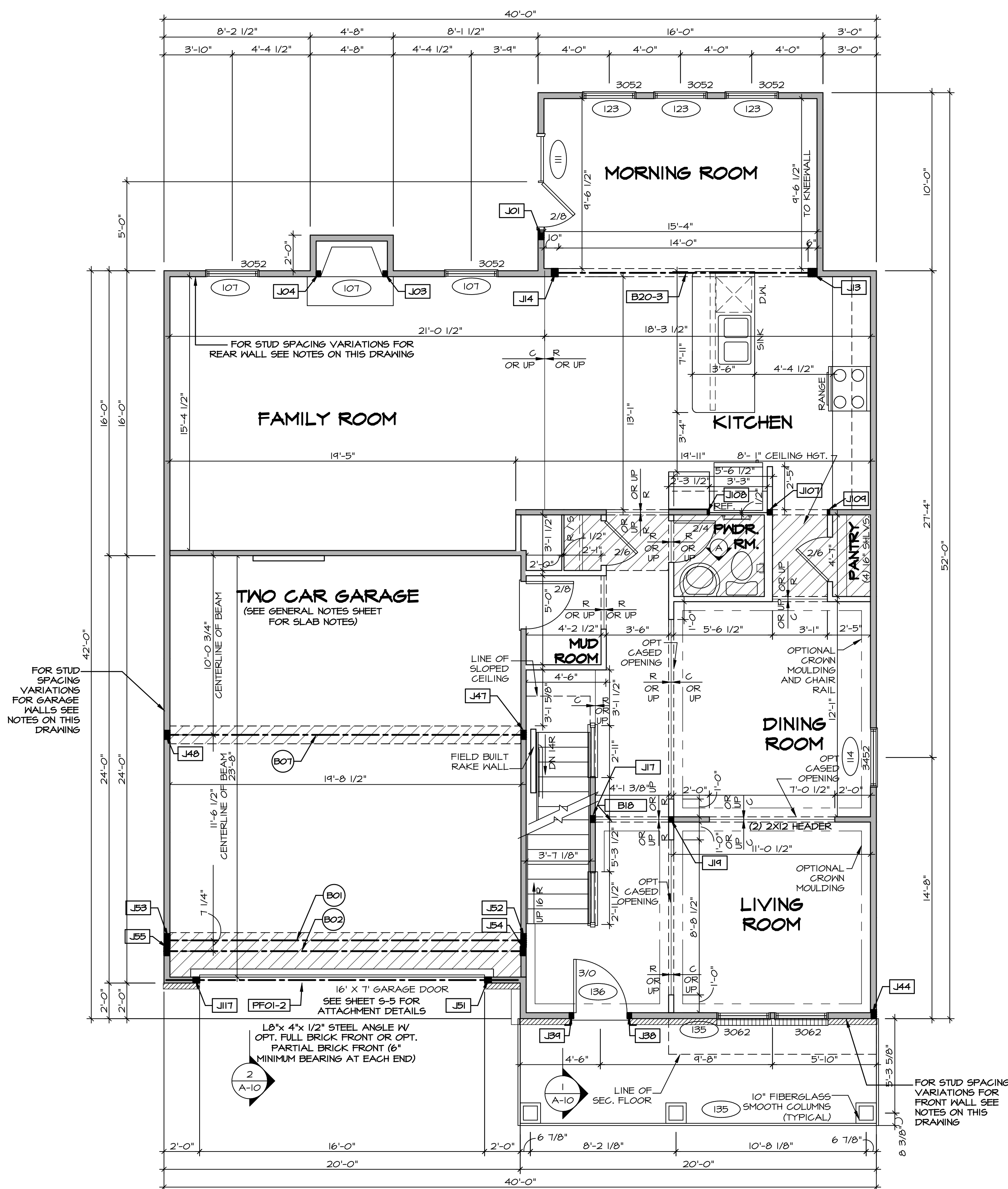
- 1.A - (2) PLY UP TO AND INCLUDING 11 7/8" TALL; FASTEN PLYS W/ (2) ROWS 16D NAILS AT 12" O.C.
- 2.A - (2) PLY 14" TO AND 18" TALL (INCLUSIVE); FASTEN PLYS W/ (3) ROWS 16D NAILS AT 12" O.C.
- 3.A - (2) PLY 20" TALL AND OVER; FASTEN PLYS W/ (4) ROWS 16D NAILS AT 12" O.C.
- 4.A - (3) PLY UP TO AND INCLUDING 11 7/8" TALL; FASTEN PLYS W/ (2) ROWS 16D NAILS AT 12" O.C. FROM EACH SIDE
- 5.A - (3) PLY 14" TO AND 18" TALL (INCLUSIVE); FASTEN PLYS W/ (3) ROWS 16D NAILS AT 12" O.C. FROM EACH SIDE
- 6.A - (3) PLY 20" TALL AND OVER; FASTEN PLYS W/ (4) ROWS 16D NAILS AT 12" O.C. FROM EACH SIDE

**FIRST FLOOR BEAM/HEADER SCHEDULE**

IDENTIFIER	DESCRIPTION	LENGTH	OPTIONS	ENS. N.M.	REMARKS
B01	BEAM STEEL - W12X30	20'-3"	ELD, ZCC, GCB	143	
B02	BEAM STEEL - W12X22	20'-3"	ELD, EVM, GCB	143	
B07	BEAM STEEL - W12X14	20'-3"	GCB	103	
B18	INT HEADER - 2X8 - 2 PLY	4'-7 1/2"		100	FIELD INSTALLED
B20-3	LVL - 16	14'-11"	MAA, ZCC	124	5.A
PFO1-2	LVL - 11-04	19'-4"	ELD	120	PORTAL FRAME, 1.A

**FIRST FLOOR JACK SCHEDULE**

IDENTIFIER	DESCRIPTION	OPTIONS	ENS. N.M.	REMARKS
J01	JACK - (3) 2X4 SPF STUD GRADE	SRM, SGK	112	FULL HEIGHT STUDS
J03	JACK - (2) 2X4 SPF STUD GRADE	LGF	108	
J04	JACK - (2) 2X4 SPF STUD GRADE	LGF	108	
J107	JACK - (2) 2X4 SPF STUD GRADE	ZCC	167	
J108	JACK - 2X4 SPF STUD GRADE		150, 167	
J109	JACK - 2X4 SPF STUD GRADE		150, 167	
J117	JACK - (3) 2X4 SPF STUD GRADE	GCB	120	
J13	JACK - (4) 2X6 SPF STUD GRADE	ZCC, MAA	124	
J14	JACK - (3) 2X6 SPF STUD GRADE	ZCC, MAA	124	
J17	JACK - (3) 2X4 SPF STUD GRADE	ZCC, FBA		
J19	JACK - (2) 2X4 SPF STUD GRADE	MBL		
J38	JACK - (2) 2X4 SPF STUD GRADE	ELD	105	
J39	JACK - (2) 2X4 SPF STUD GRADE	ELD	105	
J44	JACK - (4) 2X4 SPF	ELD	205	
J47	JACK - (4) 2X4 SPF STUD GRADE	GCB		
J48	JACK - (4) 2X4 SPF STUD GRADE	GCB		
J51	JACK - (3) 2X4 SPF STUD GRADE	GCB	120	
J52	JACK - (6) 2X4 SPF	ELD, ZCC	143	
J53	JACK - (6) 2X4 SPF	SRM, SGK, SRI, SGK, GCB	143	
J54	JACK - (4) 2X4 SPF STUD GRADE	GCB, ELD, EVM	143	
J55	JACK - (4) 2X4 SPF STUD GRADE	GCB, ELD, EVM	143	



**FIRST FLOOR PLAN**  
SCALE: 1/4" = 1'-0"

**STEEL COLUMN SCHEDULE**

IDENTIFIER	STYLE	HEIGHT	OPTIONS	ENS. N.M.	REMARKS
C135					

**STUD SPACING FOR FRONT WALLS AT LIVING ROOM:**

- (115) NO ATTIC "BTU/MAU", 2x4 STUD WALLS AT 16" O.C.
- (157) W/ ATTIC "BTU/MAU", 2x4 STUD WALLS AT 12" O.C.

**STUD SPACING FOR FRONT WALLS AT FOYER:**

- (116) 2x4 STUD WALLS AT 12" O.C.
- (157) 2x4 STUD WALLS AT 12" O.C.

**STUD SPACING FOR FRONT / SIDE WALLS AT GARAGE:**

- (125) W/ 60 MPH "SRM" OR 100 MPH "SGK", 2x4 STUD WALLS AT 16" O.C. OR
- (125) W/ 110 MPH "SQL" OR 120 MPH "SRX", 2x4 STUD WALLS AT 12" O.C.

**STUD SPACING FOR REAR WALLS AT DINETTE/ KITCHEN:**

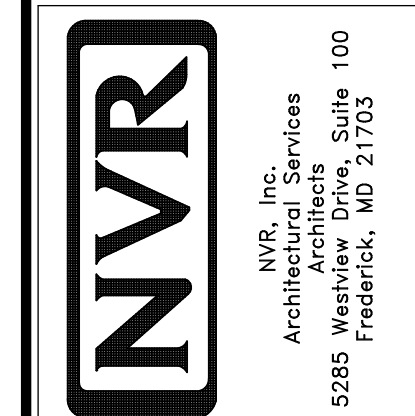
- (117) W/ CORPORATE TRUSS SPECS, "SRI" OR SOUTHEAST SPECS, "SGS" WITHOUT ATTIC, 2x4 STUD WALLS AT 16" O.C. OR
- (117) W/ NORTHEAST TRUSS SPECS, "SRJ" WITHOUT ATTIC, 2x4 STUD WALLS AT 12" O.C. OR
- (158) W/ ATTIC "BTU/MAU", 2x4 STUD WALLS AT 12" O.C.

**STUD SPACING FOR REAR WALLS AT FAMILY ROOM:**

- (117) NO ATTIC "BTU/MAU", 2x4 STUD WALLS AT 16" O.C. OR
- (158) W/ ATTIC "BTU/MAU", 2x4 STUD WALLS AT 12" O.C.

REV. NO.	DATE	DESCRIPTION
1	08/01/16	N.L. - DRAWING ALIGNMENT
2	07/12/17	SLS - T-PLY CONVERSION PROJECT

NVR, Inc., owner, expressly reserves its copyright in these plans. These plans are not to be reproduced, changed, copied, or otherwise used in any way without the written consent of NVR, Inc.



SET NO. NAPOO	VERSION 06
DRAWN BY TN	DATE: 05/22/15
OPTION	

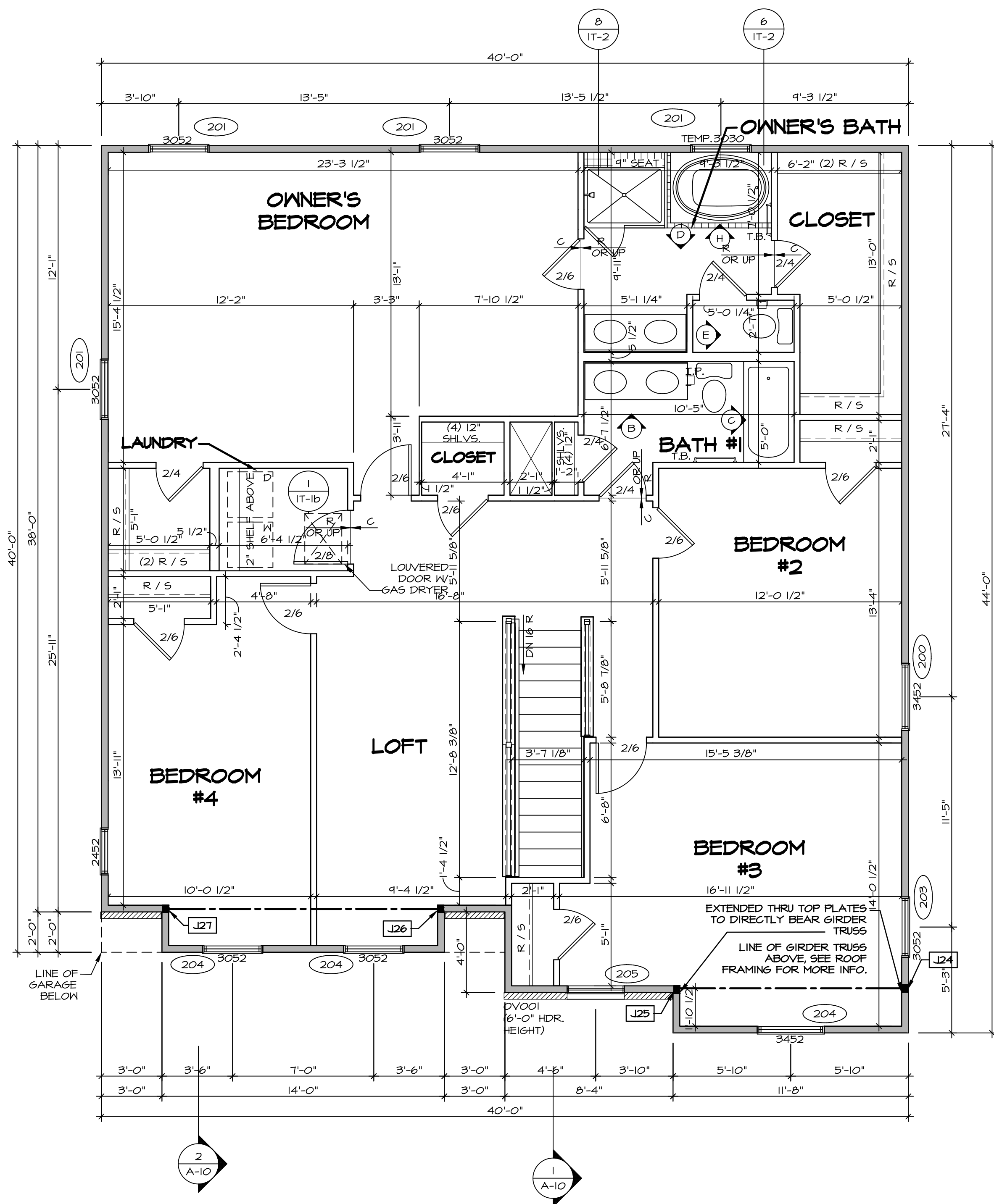
MODEL	NAPLES
DRAWING TITLE	FIRST FLOOR PLAN
OPTION DESCRIPTION	
SHEET NO.	A-7
	32

**LEGEND**

	BEARING WALL
	NON BEARING WALL
	INDICATES BEARING FROM POINT-LOAD ABOVE
	JACKS
	BEAM/HEADER
	PAD FOOTING
	STEEL COLUMN
	PORTAL FRAME
	JOIST/TRUSS
	LVL
	ENGINEERING PAGE NUMBER

SEE FC DETAILS FOR FRAMING CONNECTORS

- FLOOR PLAN NOTES**
- ALL HEADERS ARE (2) 2x6 w/ 2x4 WALLS OR (3) 2x6 w/ 2x6 WALLS, UNLESS OTHERWISE NOTED.
  - ALL HEADERS TO HAVE (1) 2x4 OR 2x6 JACK AND KING STUD EACH END, UNLESS OTHERWISE NOTED.
  - ALL EXTERIOR WALLS TO BE 4" w/ OSB OR 3 1/2" w/ T-PLY, ALL INTERIOR WALLS TO BE 3 1/2", UNLESS OTHERWISE NOTED.
  - HATCHED AREAS INDICATE DROPPED CEILINGS. ALL DROPPED CEILINGS ARE 12' UNLESS OTHERWISE NOTED. SEE "BRACED WALL PANEL DETAIL SHEET" FOR SPECIAL WALL FRAMING LOCATIONS AND HEADER SIZES, IF APPLICABLE.
  - SEE STANDARD DETAIL CATEGORY "11" SHEET(S) FOR INTERIOR TRIM DETAILS.
  - SEE ARCHITECTURAL DETAIL SHEET "AD" FOR HOUSE SPECIFIC INTERIOR TRIM OPTION TABLE.
  - ALL WINDOWS HAVE 1" T-O 1/2" HEADER HEIGHT UNLESS OTHERWISE NOTED.
  - ALL HEADERS IN NON-BEARING WALLS SHALL BE A SINGLE FLAT 2x4 OR 2x6 ATTACHED TO CRIPPLES ABOVE, UNLESS OTHERWISE NOTED.



**SECOND FLOOR PLAN**  
SCALE: 1/4" = 1'-0"

**SECOND FLOOR JACK SCHEDULE**

IDENTIFIER	DESCRIPTION	OPTIONS	ENG. NUM.	REMARKS
J24	JACK - (3) 2X4 SP#1	ELD	205	
J25	JACK - (3) 2X4 SP#1	ELD	205	
J26	JACK - (3) 2X4 SP#1	ELD	206	
J27	JACK - (3) 2X4 SP#1	ELD	206	

- LVL PLY TO PLY FASTENING SCHEDULE:**
- 1A - (2) PLY UP TO AND INCLUDING 11 7/8" TALL; FASTEN PLYS W/ (2) ROWS 16D NAILS AT 12" O.C.
  - 2A - (2) PLY 14" TO AND 18" TALL (INCLUSIVE); FASTEN PLYS W/ (3) ROWS 16D NAILS AT 12" O.C.
  - 3A - (2) PLY 20" TALL AND OVER; FASTEN PLYS W/ (4) ROWS 16D NAILS AT 12" O.C.
  - 4A - (3) PLY UP TO AND INCLUDING 11 7/8" TALL; FASTEN PLYS W/ (2) ROWS 16D NAILS AT 12" O.C. FROM EACH SIDE
  - 5A - (3) PLY 14" TO AND 18" TALL (INCLUSIVE); FASTEN PLYS W/ (3) ROWS 16D NAILS AT 12" O.C. FROM EACH SIDE
  - 6A - (3) PLY 20" TALL AND OVER; FASTEN PLYS W/ (4) ROWS 16D NAILS AT 12" O.C. FROM EACH SIDE

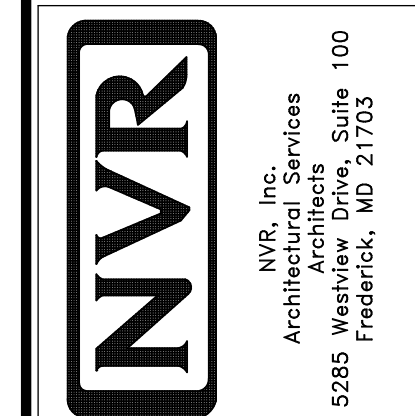
**SECOND FLOOR BEAM/HEADER SCHEDULE**

IDENTIFIER	DESCRIPTION	LENGTH	OPTIONS	ENG. NUM.	REMARKS

**REVISIONS**

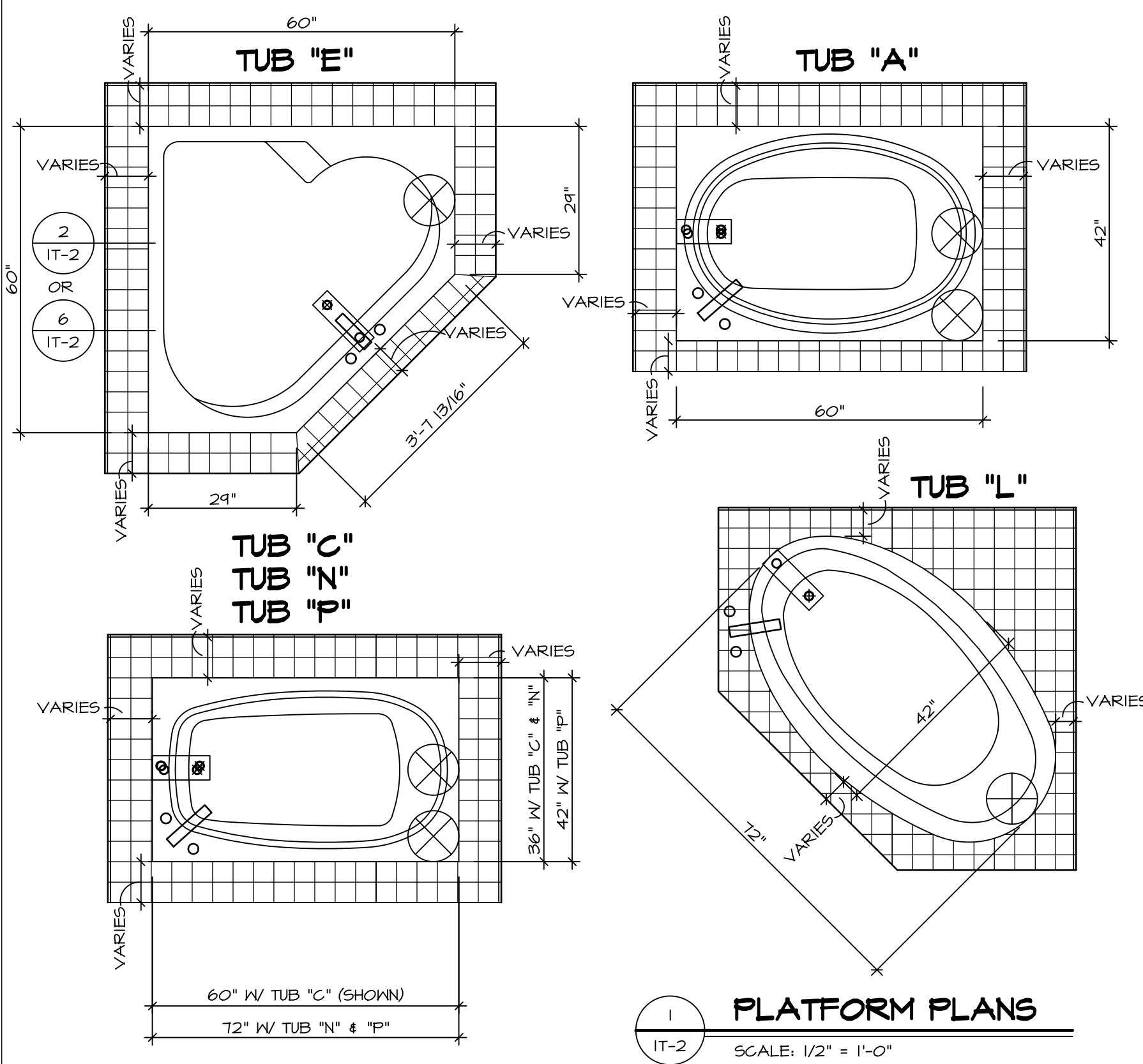
REV. NO.	DATE	DESCRIPTION
1	08/01/16	N.L. - DRAWING ALIGNMENT
2	07/12/17	SLS - T-PLY CONVERSION PROJECT

NVR, Inc., owner, expressly reserves its copyright in the drawings and plans. These plans are not to be reproduced, changed, copied, or otherwise used in any way without the written consent of NVR, Inc.



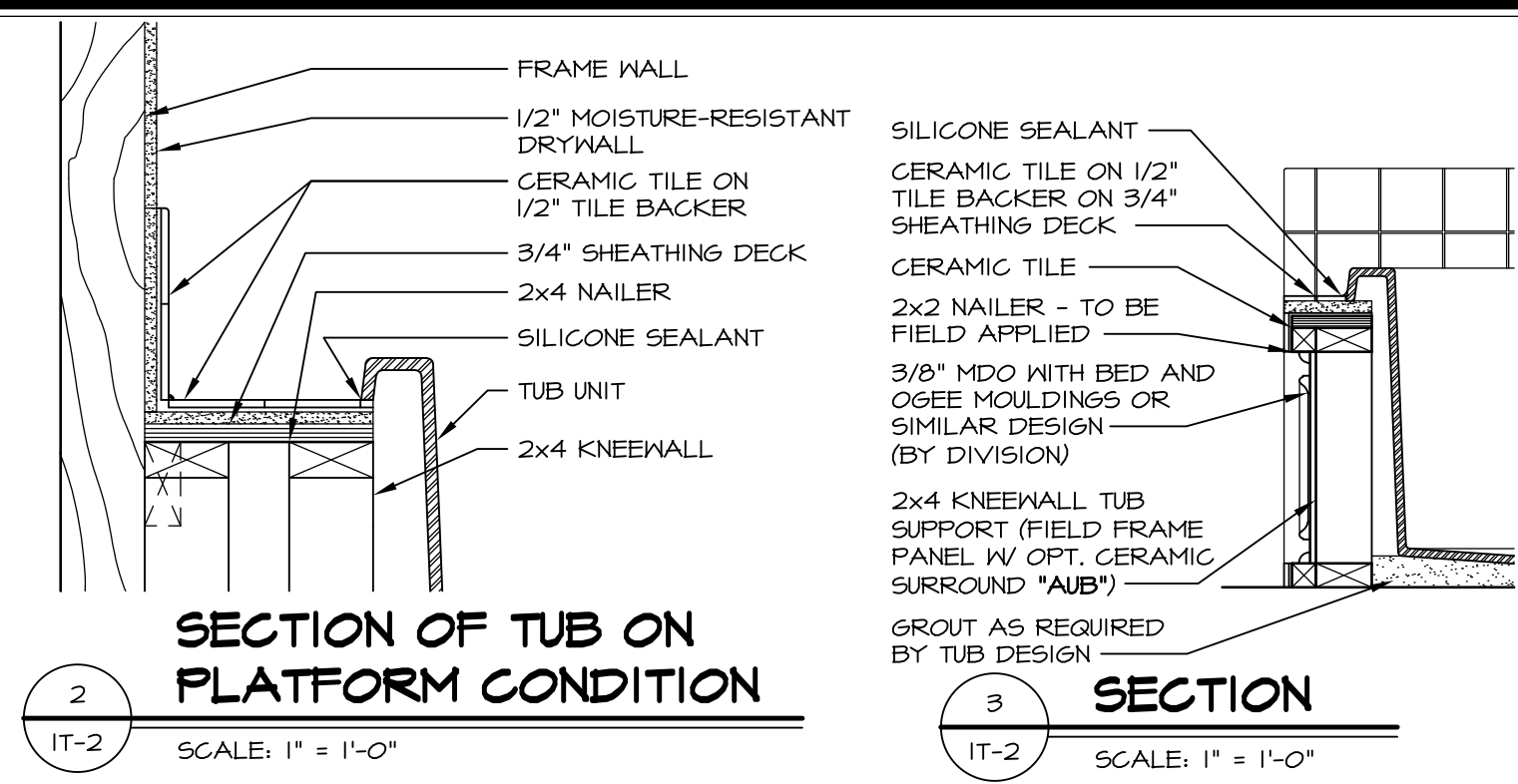
SET NO. NAP00  
VERSION 06  
DRAWN BY TN  
DATE: 05/22/15  
OPTION

MODEL  
**NAPLES**  
DRAWING TITLE  
**SECOND FLOOR PLAN**  
OPTION DESCRIPTION

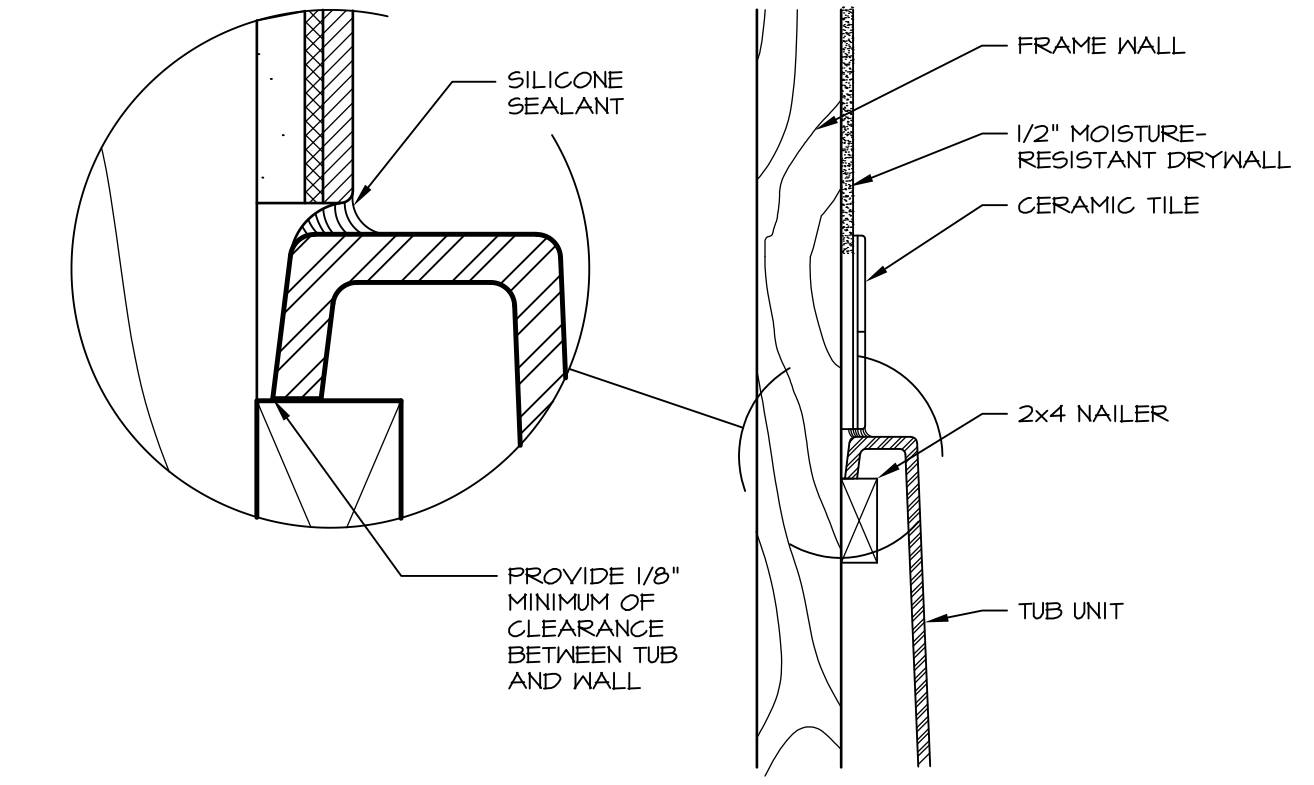


**1 PLATFORM PLANS**  
SCALE: 1/2" = 1'-0"

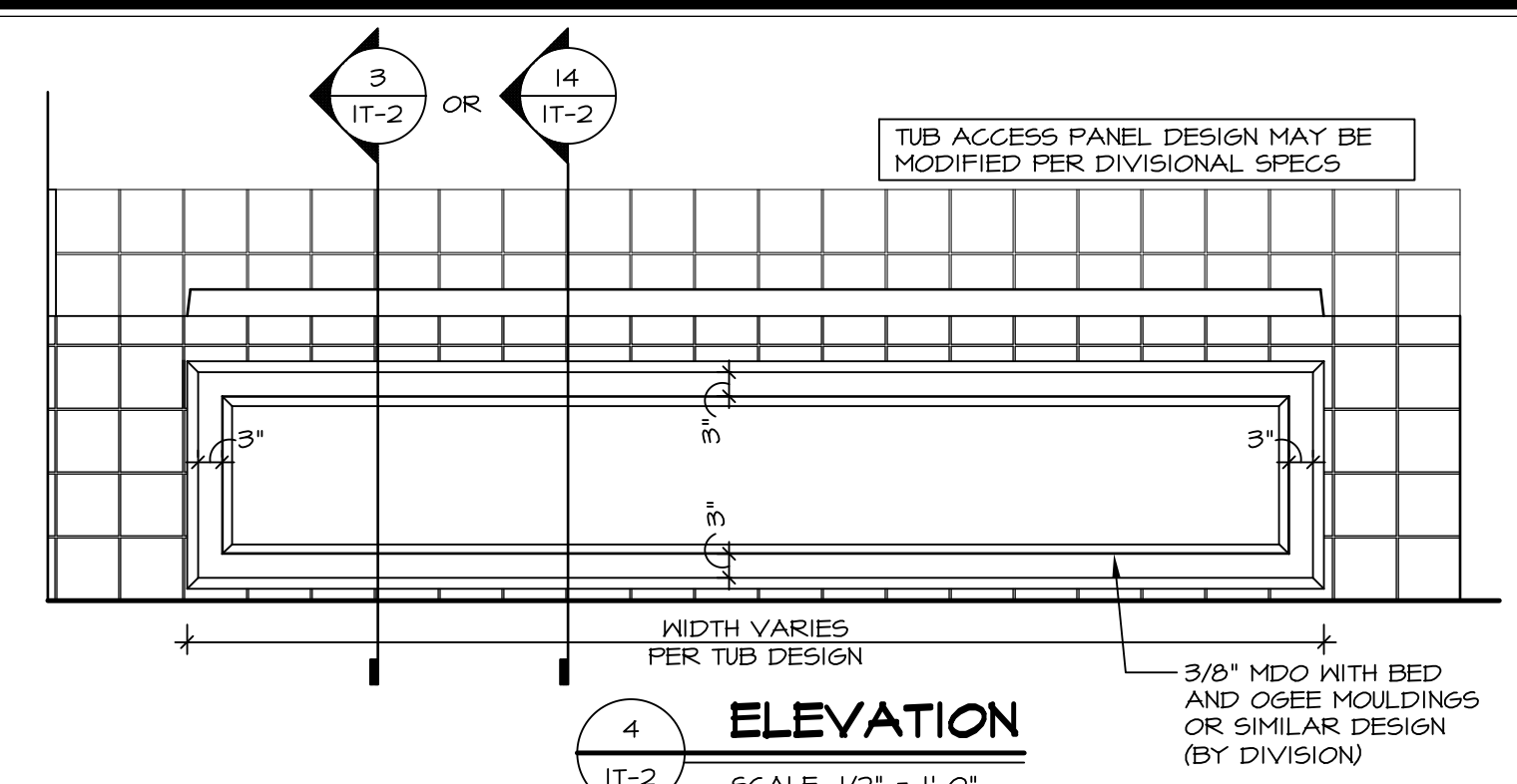
TUB	MANUF.	HEIGHT	WIDTH	LENGTH	TUB DECK PANEL HEIGHT
"A"	KOHLER/ STERLING	18 3/4"	42"	60"	17 1/8"
"C"	KOHLER/ STERLING	18 3/4"	36"	60"	17 1/8"
"E"	KOHLER/ STERLING	19 1/2"	60"	60"	17 7/8"
"L"	KOHLER/ STERLING	18 1/2"	42"	72"	16 7/8"
"N"	KOHLER/ STERLING	18 3/4"	36"	72"	17 1/8"
"P"	KOHLER/ STERLING	18 3/4"	42"	72"	17 1/8"



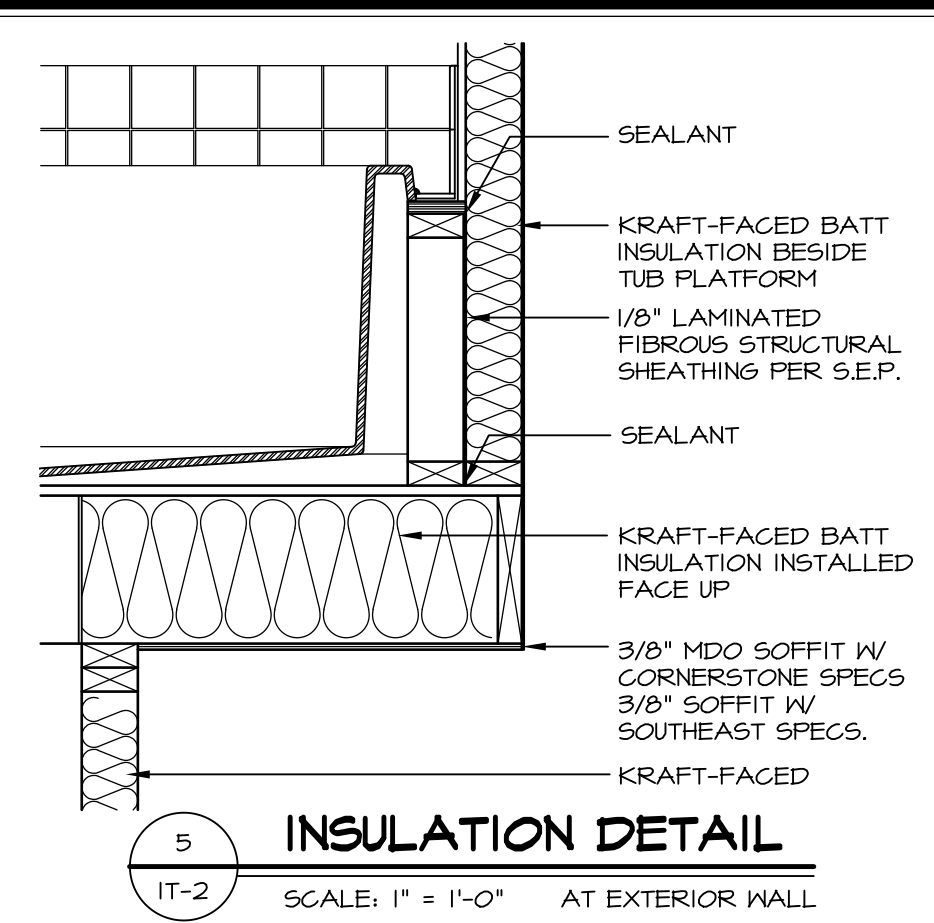
**2 SECTION OF TUB ON PLATFORM CONDITION**  
SCALE: 1" = 1'-0"



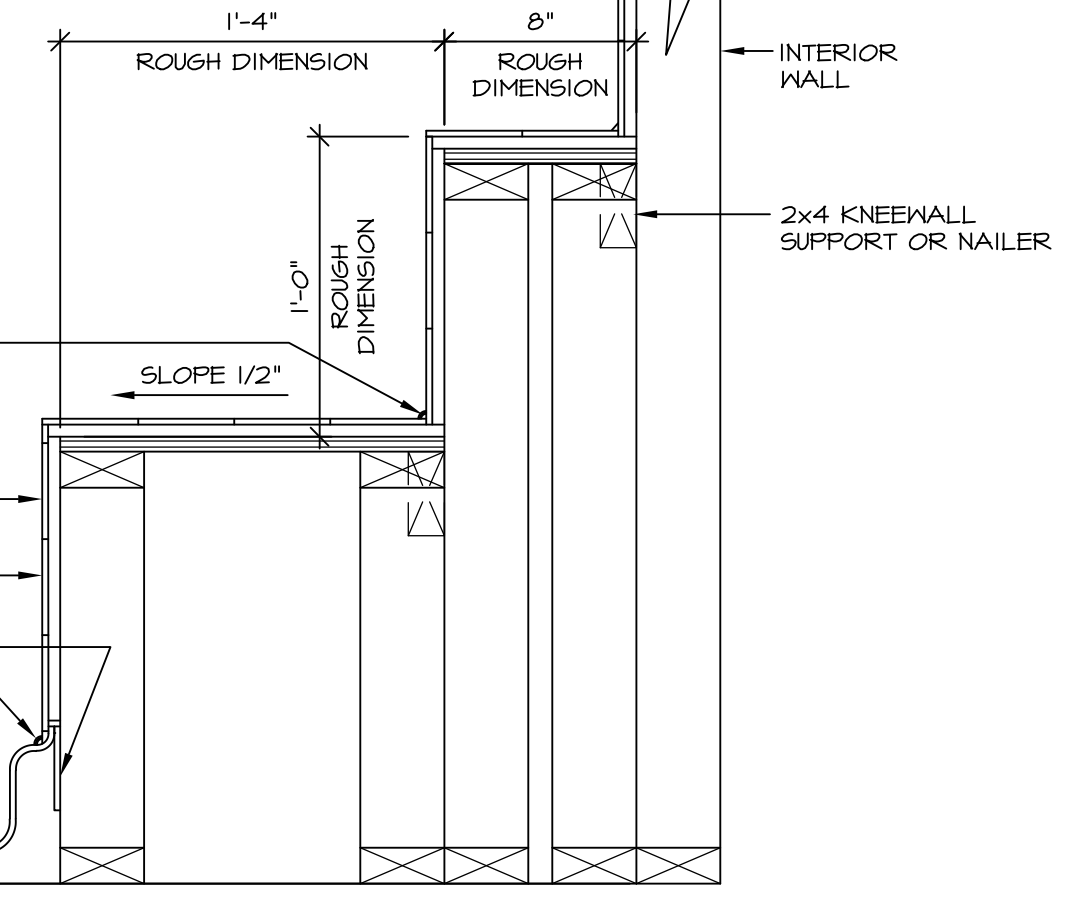
**3 SECTION OF TUB TO WALL CONDITION**  
SCALE: 1 1/2" = 1'-0"



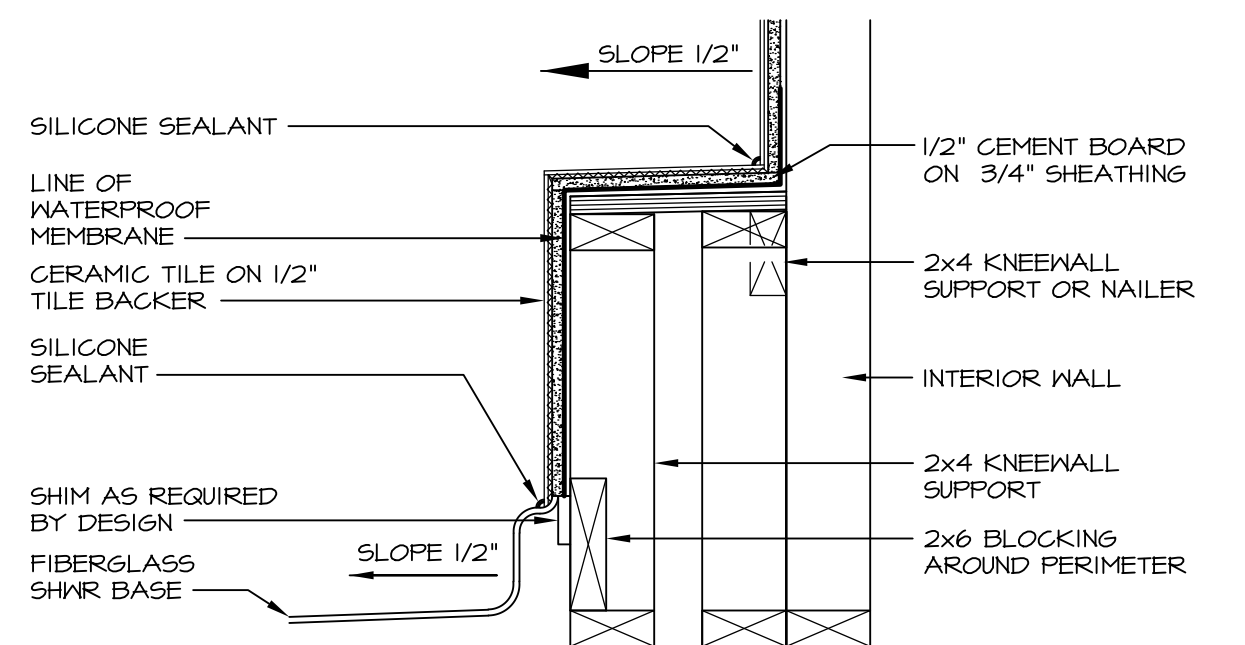
**4 ELEVATION**  
SCALE: 1/2" = 1'-0"



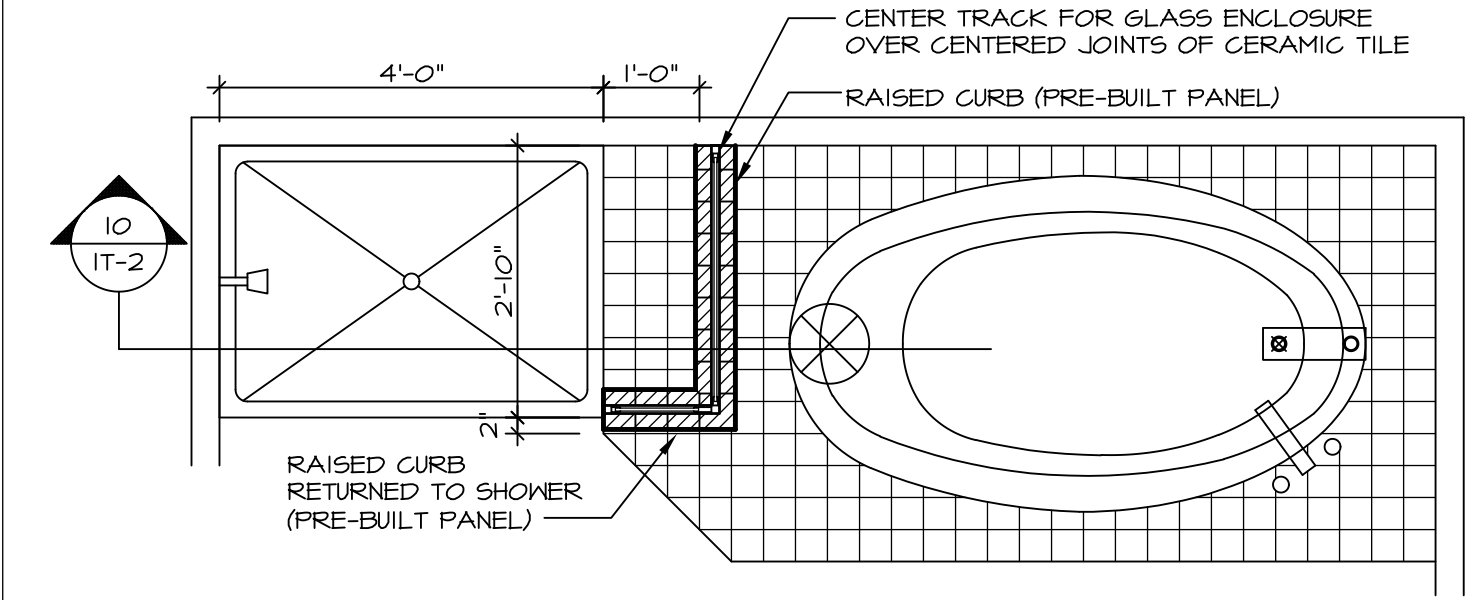
**5 INSULATION DETAIL**  
SCALE: 1" = 1'-0" AT EXTERIOR WALL



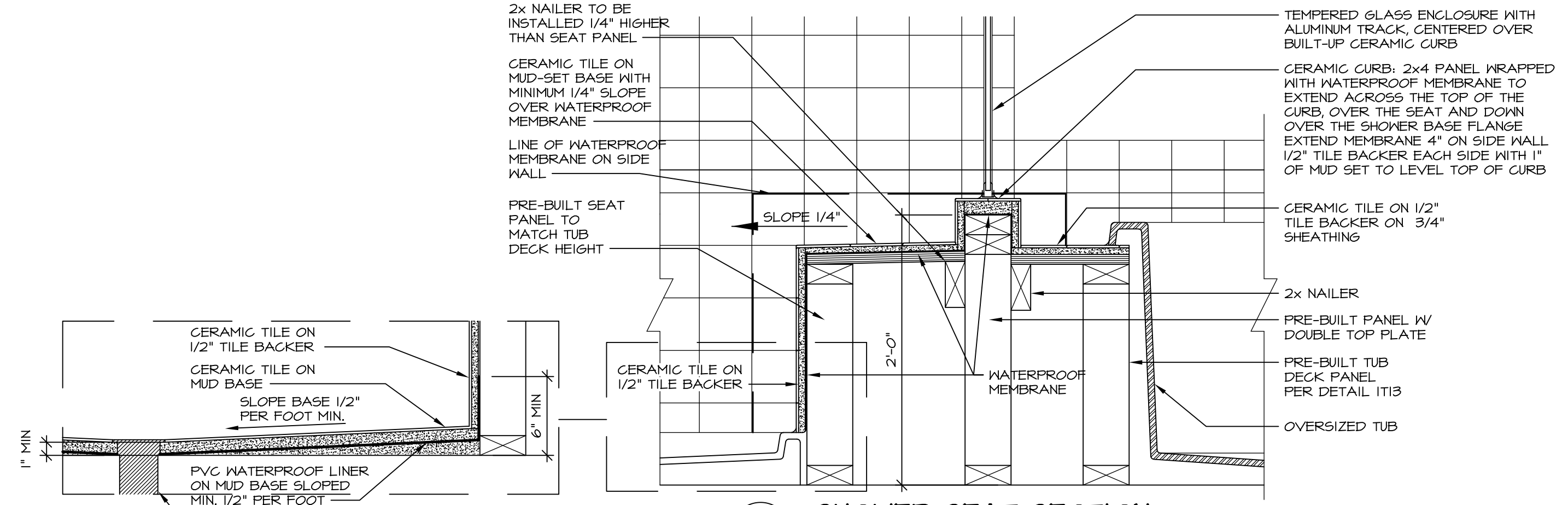
**6 SECTION OF SHOWER SEAT AND SHELF**  
SCALE: 1 1/2" = 1'-0"



**7 SECTION OF SHOWER SEAT**  
SCALE: 1-1/2" = 1'-0" FIBERGLASS SHOWER BASE



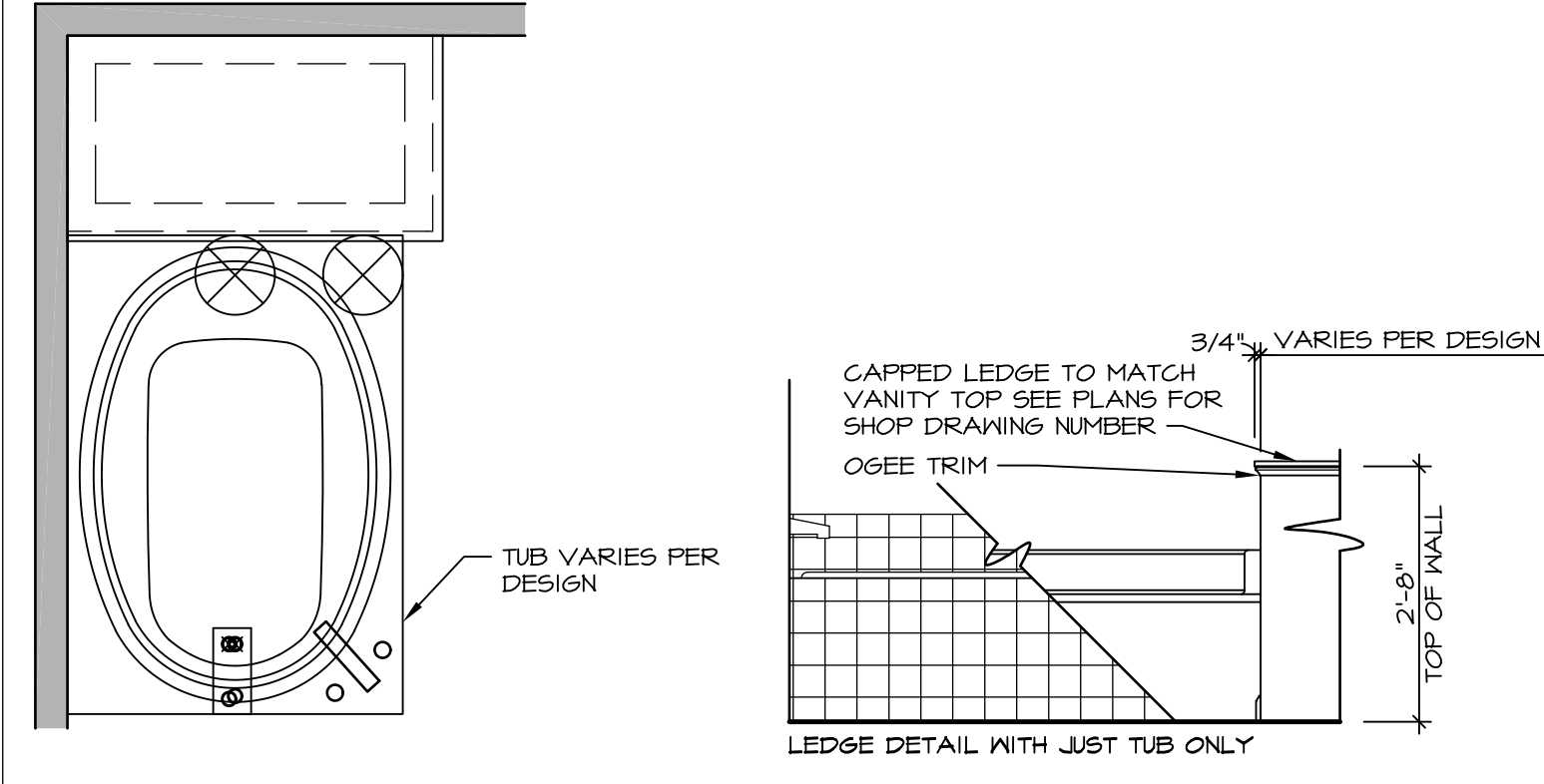
**9 SHOWER SEAT PLAN / DETAIL**  
SCALE: 1/2" = 1'-0"



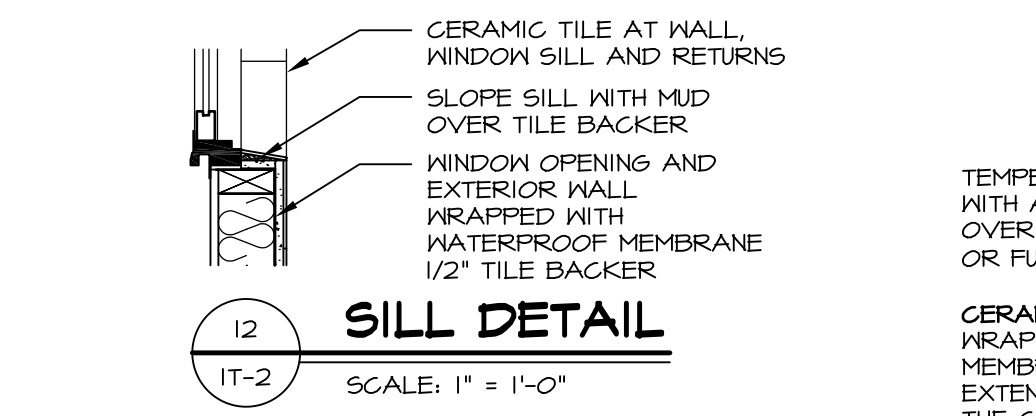
**10 SHOWER SEAT SECTION**  
SCALE: 1-1/2" = 1'-0"



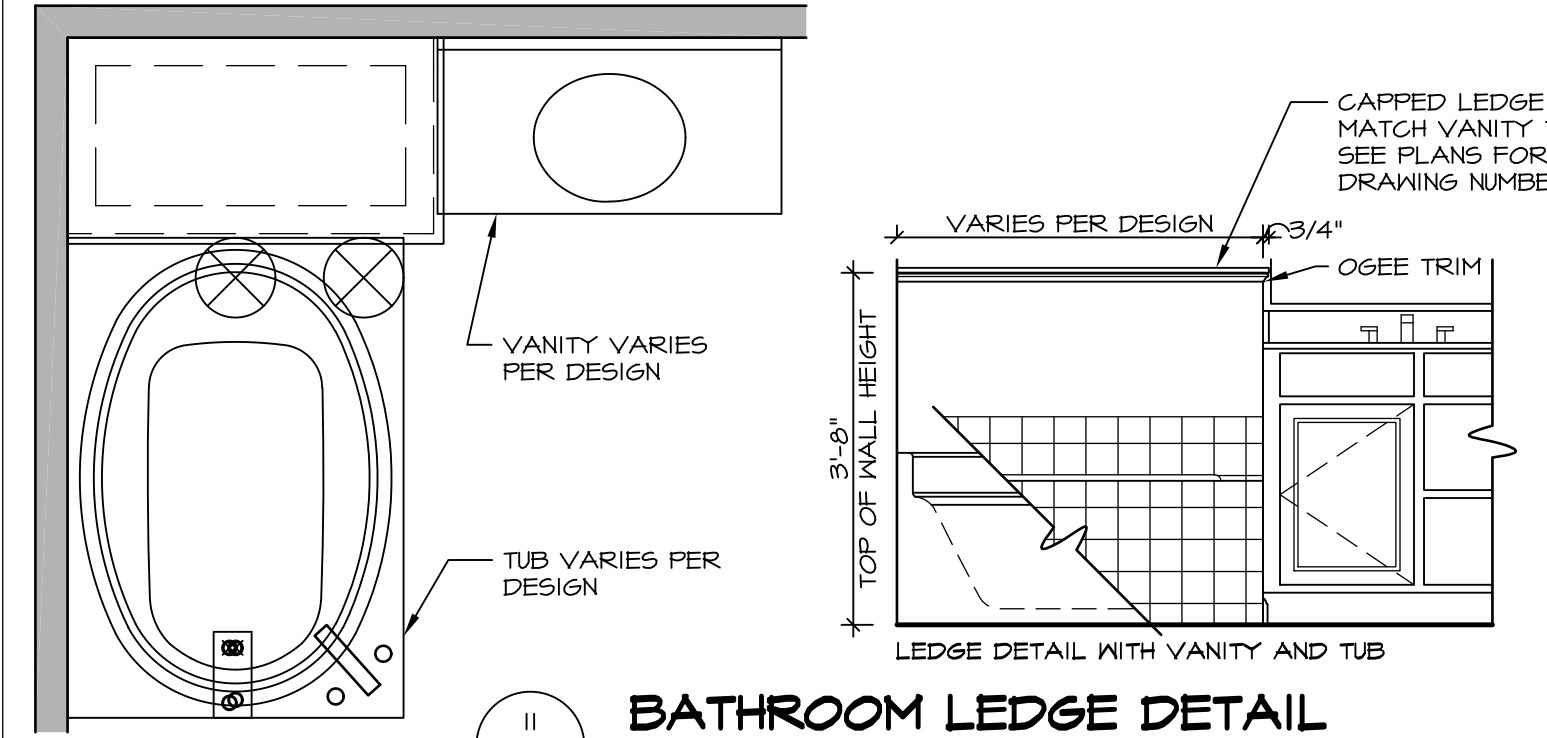
**11 ALTERNATE SHOWER PAN DETAIL**



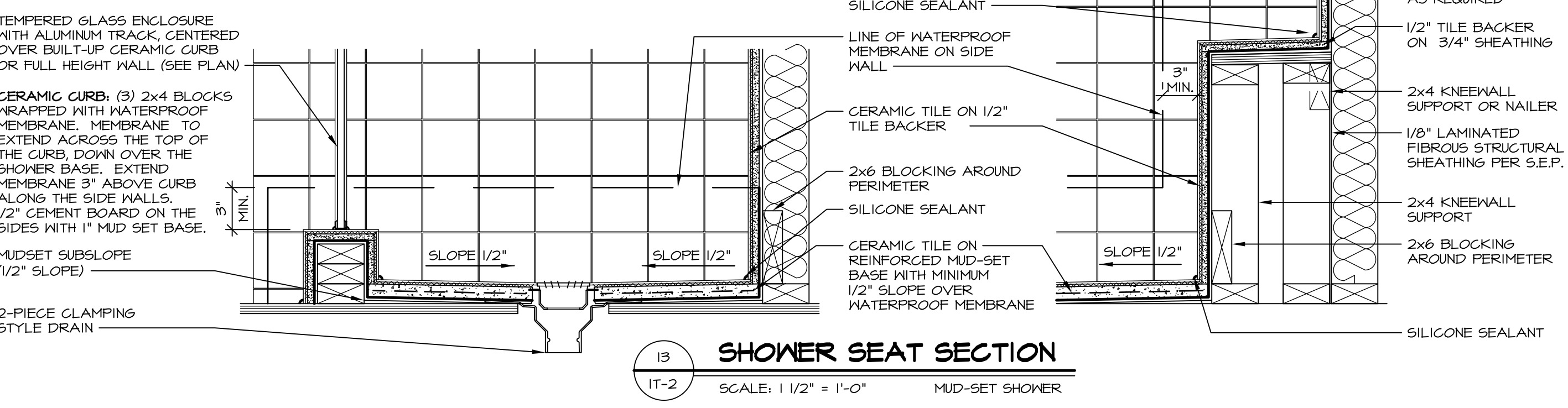
**12 BATHROOM LEDGE DETAIL**  
SCALE: 1/2" = 1'-0"



**13 SILL DETAIL**  
SCALE: 1" = 1'-0"



**14 BATHROOM LEDGE DETAIL**  
SCALE: 1/2" = 1'-0"

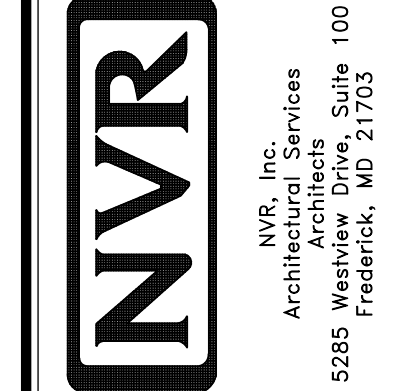


**15 SHOWER SEAT SECTION**  
SCALE: 1 1/2" = 1'-0" MUD-SET SHOWER

REVISIONS

REV. NO.	DATE	DESCRIPTION
1	5/1/17	EBP - REVISED DETAIL 1 AND 11 TO REMOVE TUB ACCESS PANEL REF. (095 #15 541/4)
2	9/2/17	EBP - REVISED T-FLY NOTE TO CALL OUT LFS
3	9/2/17	EBP - REVISED NOTE ON DETAIL #1 - REVISED ORDER OF MATERIAL PARA#493/4

NVR, Inc., owner, expressly reserves its common law copyright and other property rights in these plans. These plans are not to be reproduced, stored in a retrieval system, or transmitted in any form or by any means, electronic, mechanical, photocopying, recording, or by any information storage and retrieval system, without first obtaining the expressed written consent of NVR, Inc.



SET NO. NVR

VERSION

DRAWN BY

DATE:

OPTION

MODEL

**STANDARD DETAILS**

DRAWING TITLE

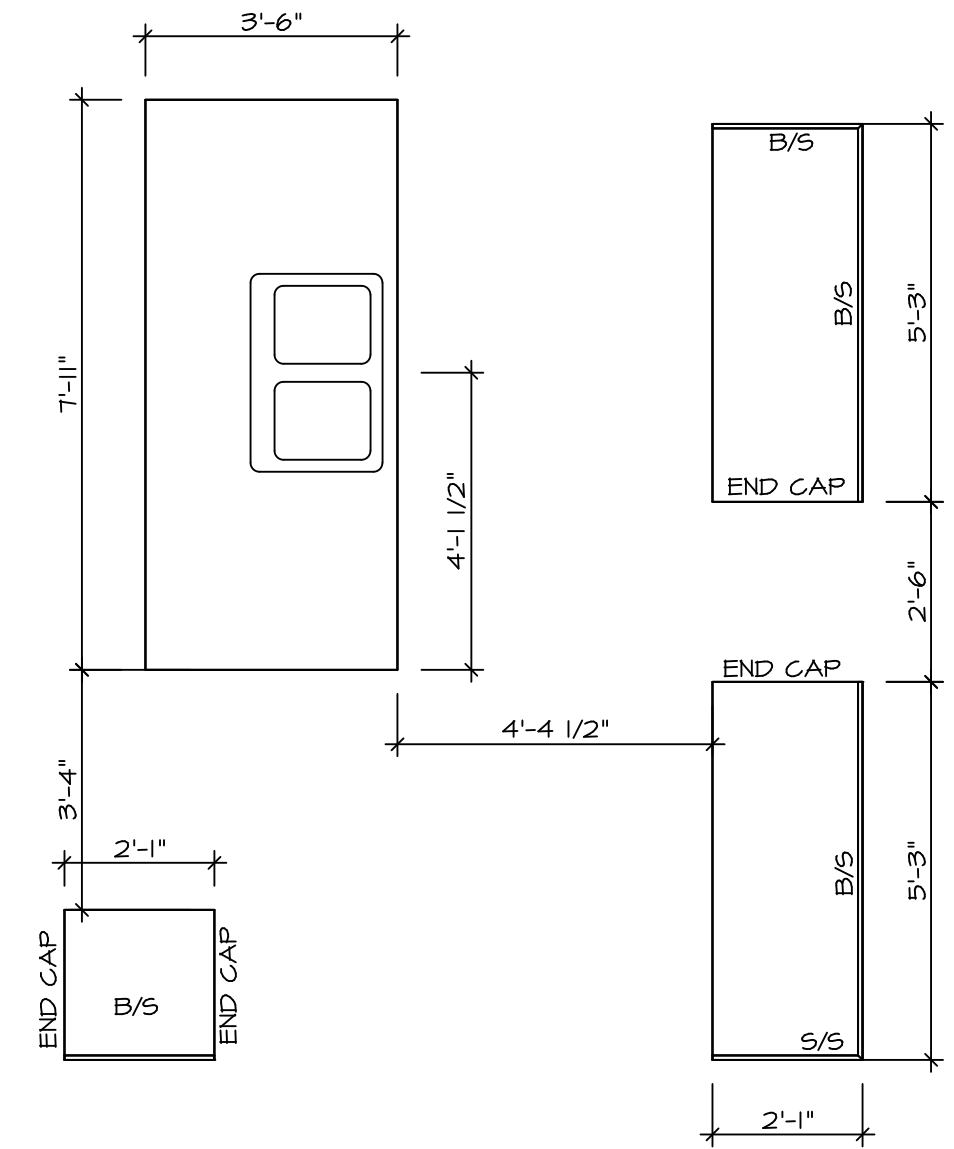
**INTERIOR TRIM DETAILS**

BATH DETAILS

OPTION DESCRIPTION

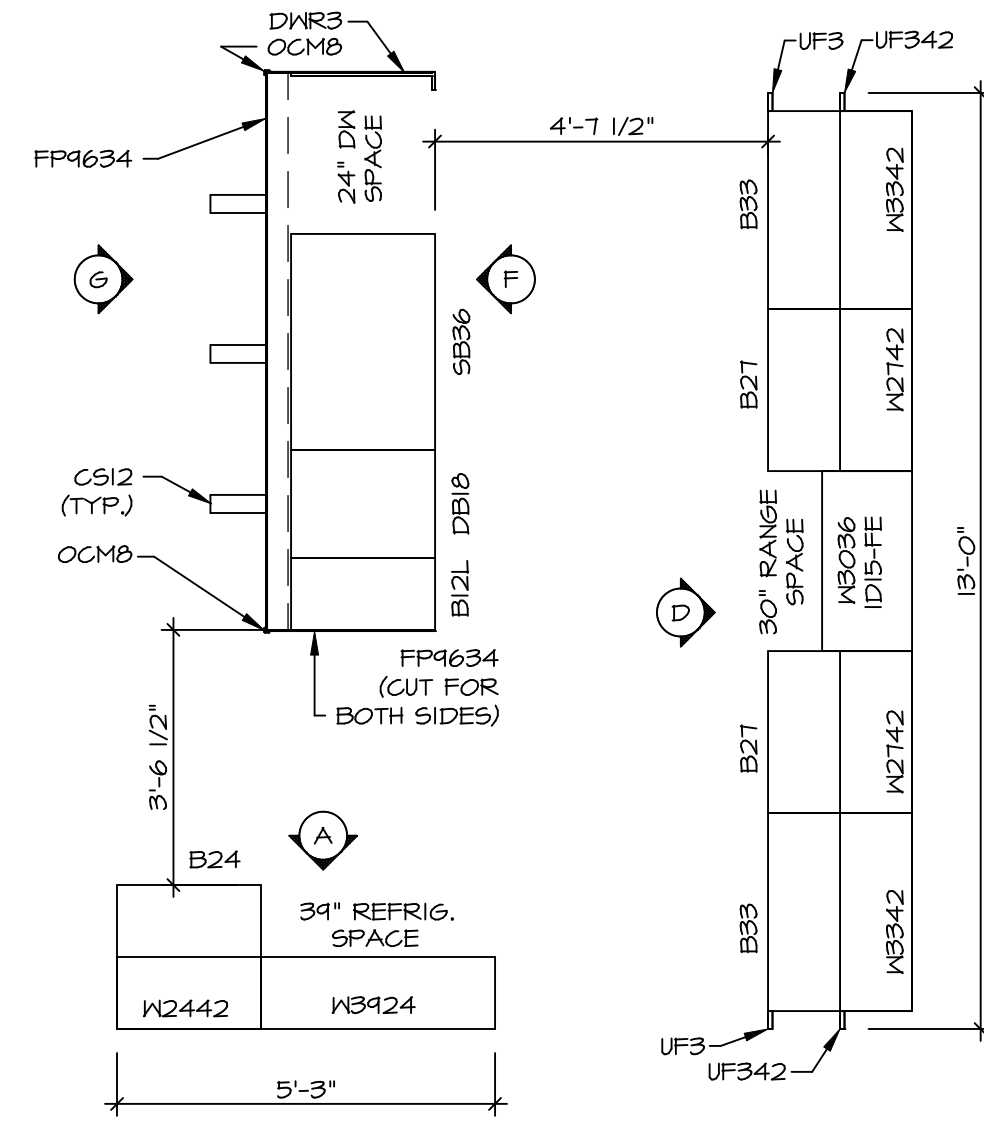
SHEET NO. **IT-2**

J:\Dwg\NVR\Interior Trim\IT2.dwg 09/27/17 - 9:20 am



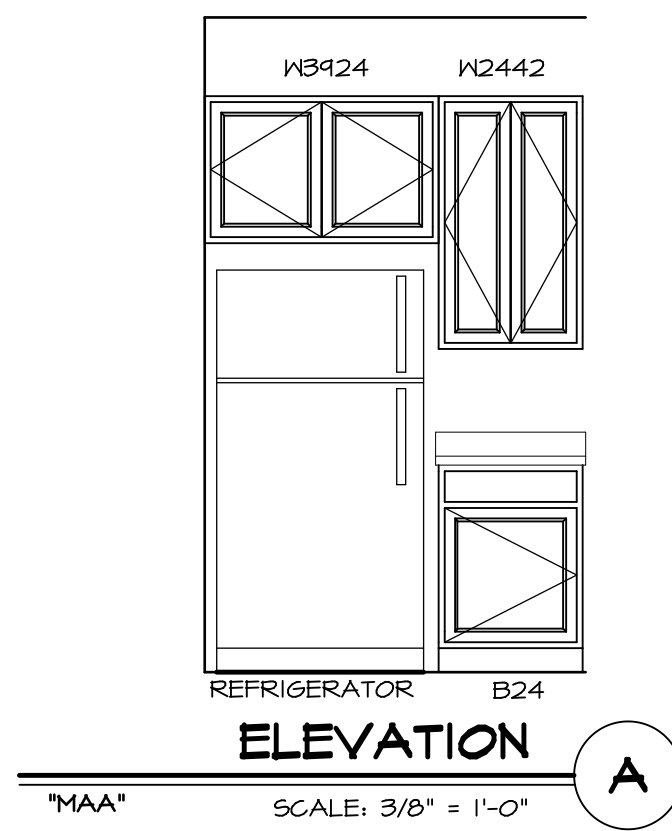
**KITCHEN COUNTERTOP  
PLAN - KT-3293**

SCALE: 3/8" = 1'-0" A-12

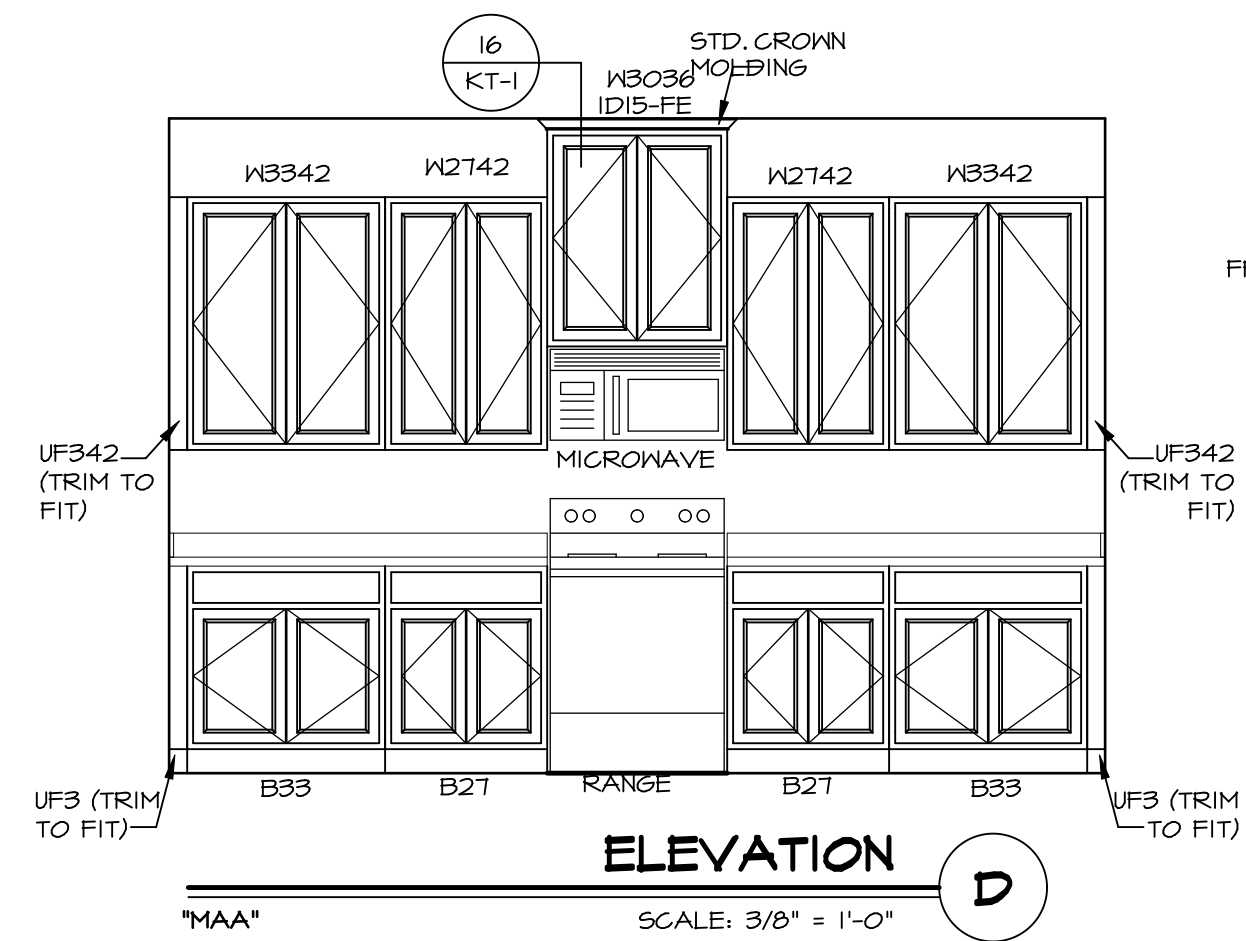


**KITCHEN CABINET  
PLAN - KC-3293**

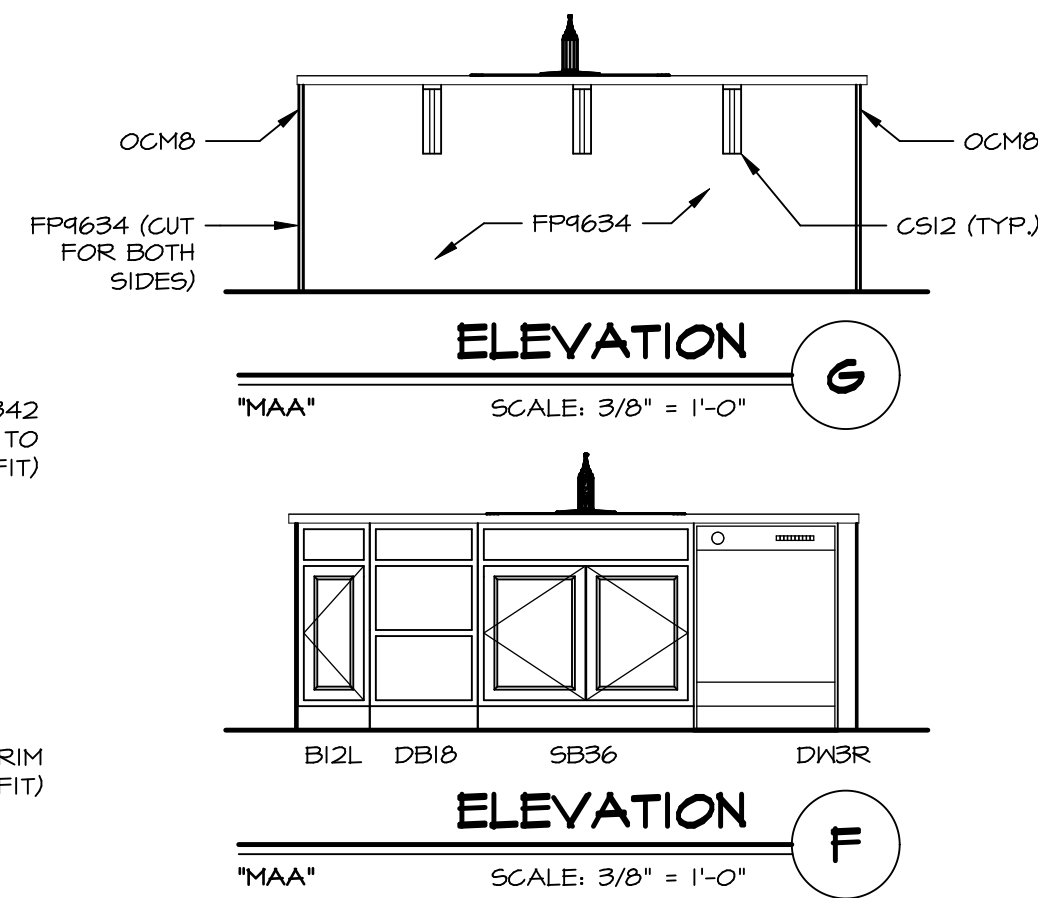
SCALE: 3/8" = 1'-0" A-12



**ELEVATION A**  
SCALE: 3/8" = 1'-0"



**ELEVATION D**  
SCALE: 3/8" = 1'-0"



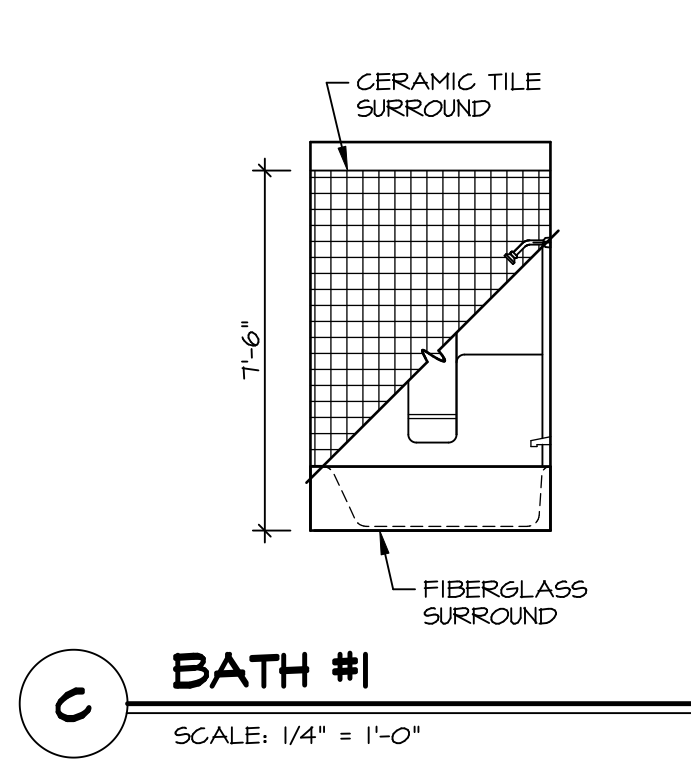
**ELEVATION G**  
SCALE: 3/8" = 1'-0"

**ELEVATION F**  
SCALE: 3/8" = 1'-0"

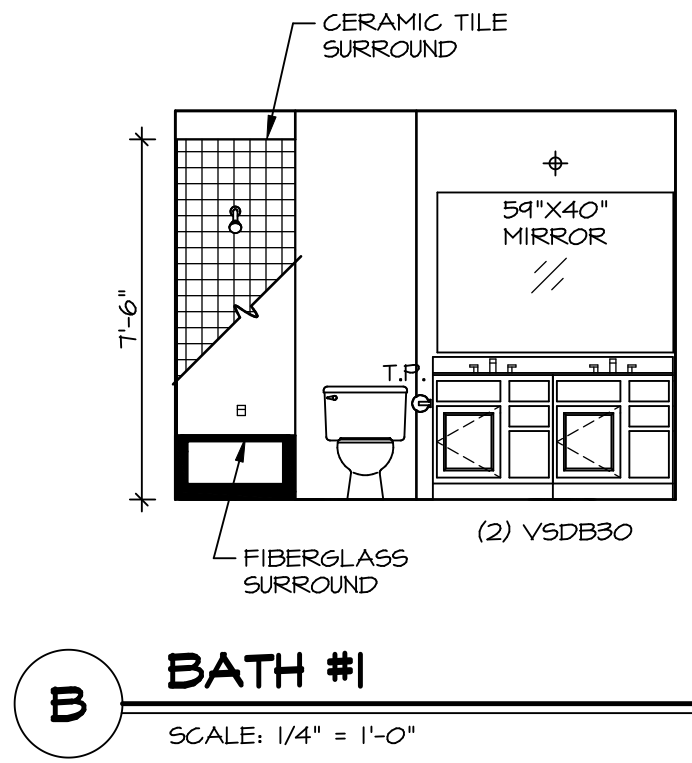
SHEET NO. <b>A-12</b>	MODEL <b>NAPLES</b>	SET NO. NAPOO	REVISIONS	REV. NO.	DATE	REMARKS
	DRAWING TITLE <b>KITCHEN SECTION</b>	DRAWN BY TN	VERSION 06			
OPTION DESCRIPTION <b>49</b>		DATE 05/22/15	OPTION			

**NVR**  
NVR, Inc.  
Architectural Services  
Architects  
5285 Westpark Drive, Suite 100  
Frederick, MD 21703

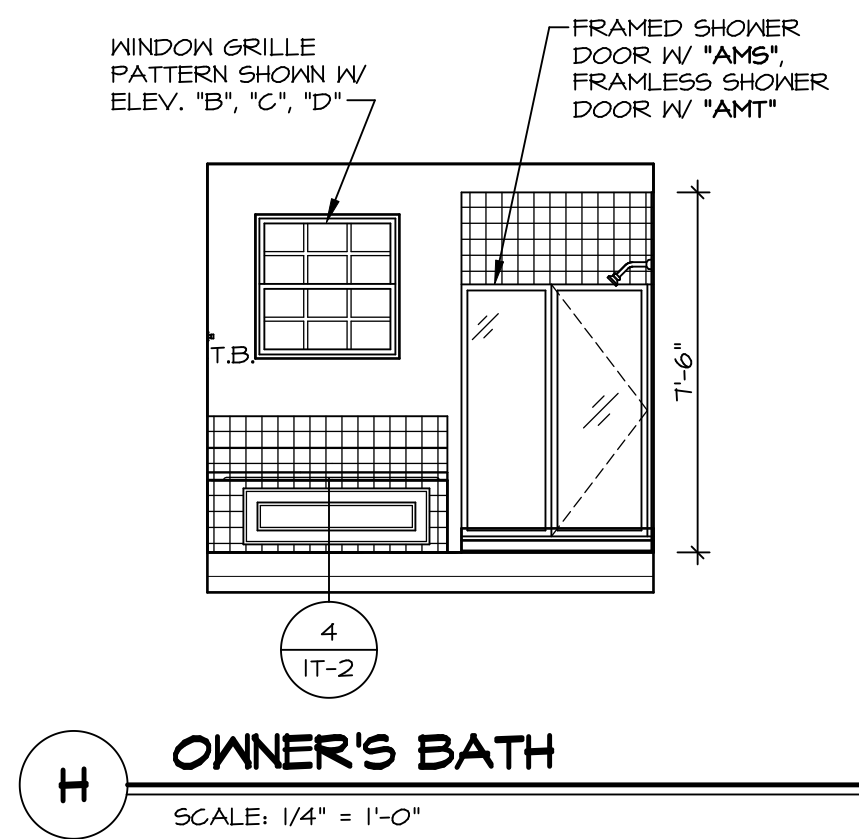
NVR, Inc., owner, expressly reserves its copyright in these plans. These plans are not to be reproduced, changed, copied, or otherwise used in any way without the written consent of NVR, Inc.



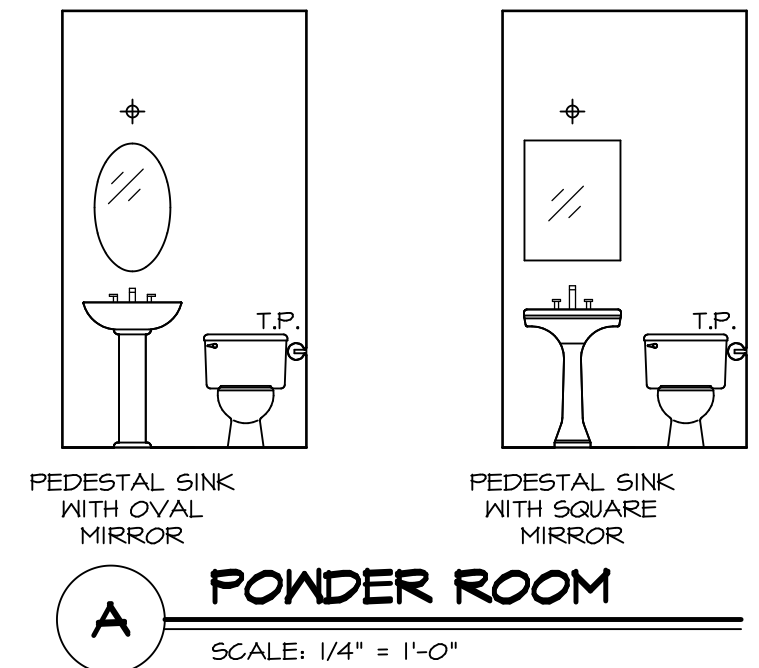
**C BATH #1**  
SCALE: 1/4" = 1'-0"



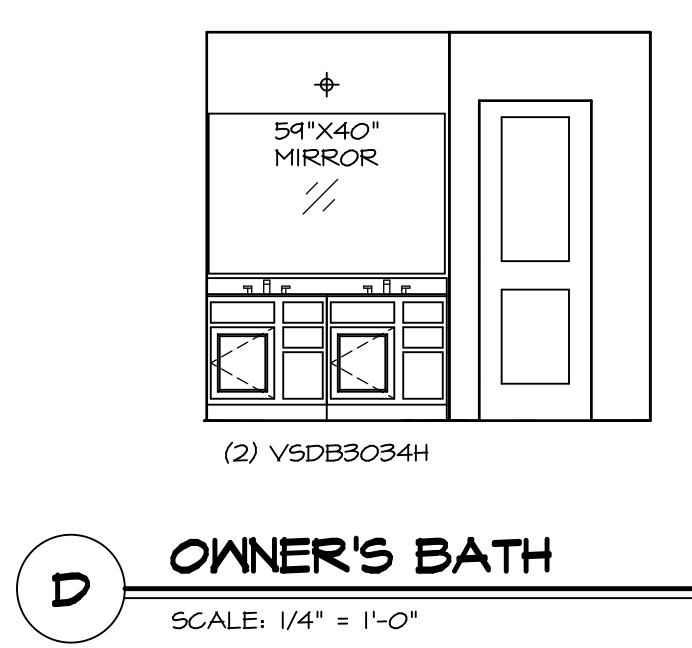
**B BATH #1**  
SCALE: 1/4" = 1'-0"



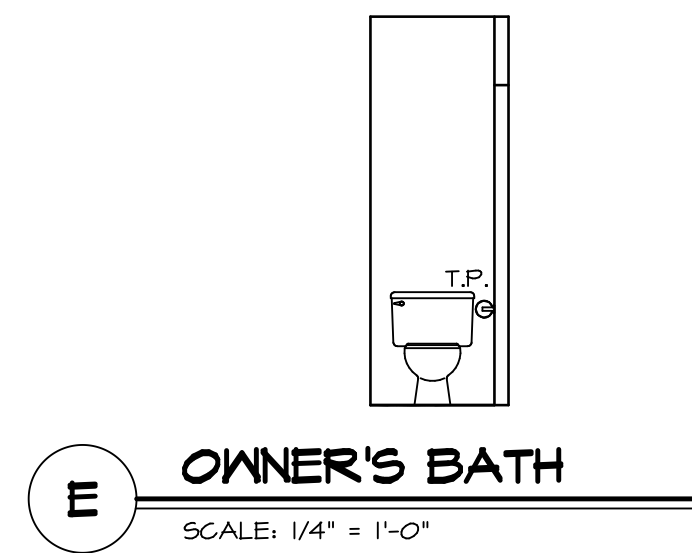
**H OWNER'S BATH**  
SCALE: 1/4" = 1'-0"



**A POWDER ROOM**  
SCALE: 1/4" = 1'-0"



**D OWNER'S BATH**  
SCALE: 1/4" = 1'-0"



**E OWNER'S BATH**  
SCALE: 1/4" = 1'-0"

- NOTES:**
- TEMPERED GLASS SHOWER ENCLOSURE WITH SWING DOOR OR OPTIONAL SLIDING DOOR. BY DIVISION
  - TUB ACCESS PANELS PROVIDED AS NEEDED. ALL MATERIALS BY DIVISION
  - REFER TO SHEET ET-2 FOR TUB AND SHOWER DETAILS.
  - ALL V5DB24-42 DRAWERS TO BE SET ON RIGHT HAND.
  - BATH ELEVATIONS ARE SHOWN PER PLAN.

SHEET NO. <b>A-13</b>	MODEL <b>NAPLES</b>	SET NO. NAPOO	REVISIONS
	DRAWING TITLE <b>BATH ELEVATIONS</b>	VERSION <b>06</b>	
OPTION DESCRIPTION <b>51</b>	DATE: <b>05/22/15</b>	OPTION	REMARKS
	DRAWN BY: <b>TN</b>	DATE: <b>05/22/15</b>	
C:\NVR\Solves\NAPLES_NAPOO_06\DCY-CH-X300-795959\SheetA.dwg		05/17/15 - 6:18 am	

NVR, Inc., owner, expressly reserves its copyright in these plans. These plans are not to be reproduced, changed, copied in any way, or used for any purpose not assigned to them without the written consent of NVR, Inc.

