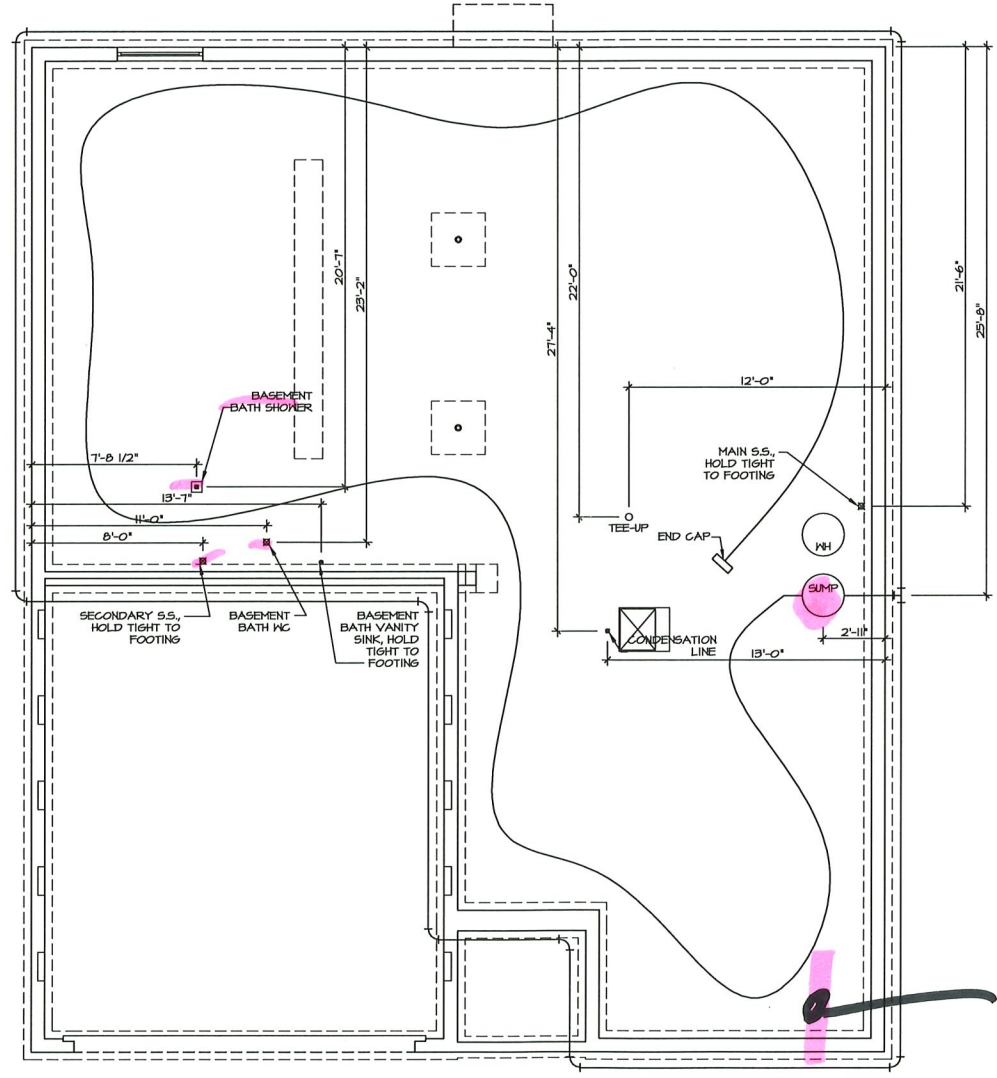



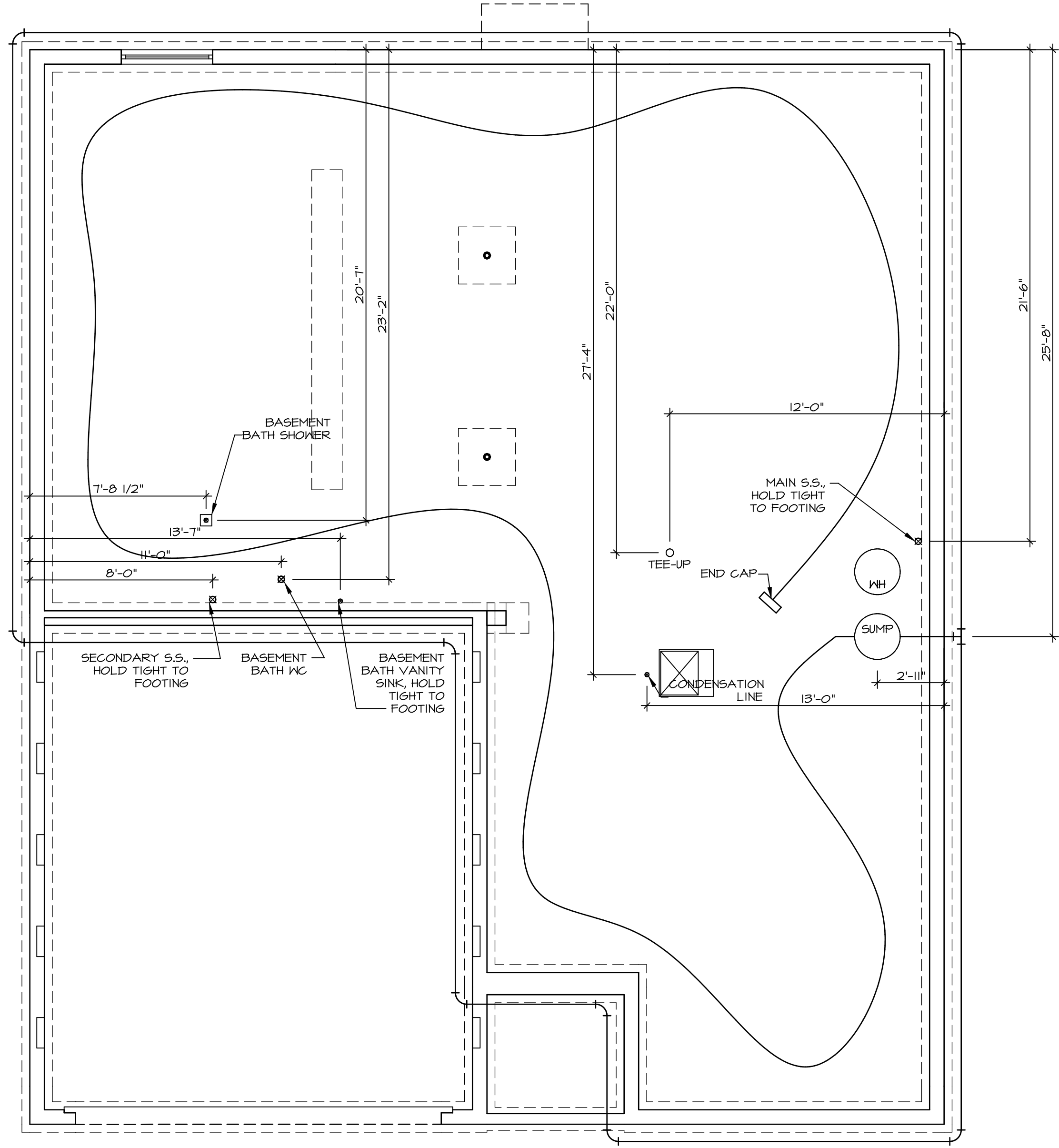
CH X409



SEWER

PLUMBING PLAN
SCALE: 1/4" = 1'-0"

SHEET NO. A-5	MODEL PISA TORRE	SET NO. PSTCO	REV. NO.	DATE	REMARKS
	DRAWING TITLE PLUMBING PLAN	VERSION CD			
OPTION DESCRIPTION 15	DRAWN BY	DATE	<small>NVR, Inc. reserves all rights in these drawings. No part of these drawings may be reproduced, stored in a retrieval system, or transmitted in any form or by any means, electronic, mechanical, photocopying, recording, or by any information storage and retrieval system, without the prior written consent of NVR, Inc.</small>		
	DATE	OPTION			
 <small>NVR, Inc. - Architects 528 Westview Drive, Suite 100 Frederick, MD 21702</small>		<small>PROJECT: PISA TORRE - PSTCO - 03A - SCHEDULE - SPECIFICATIONS - A-5 - PLUMBING - 01/08/19 - 3:00 pm</small>			



PLUMBING PLAN
SCALE: 1/4" = 1'-0"

SHEET NO. A-5	MODEL PISA TORRE	SET NO. PST00
	DRAWING TITLE PLUMBING PLAN	VERSION 03
	OPTION DESCRIPTION	DRAWN BY
		DATE:
		OPTION

NVR
Architectural Services
5285 Westpark Drive, Suite 100
Frederick, MD 21703

NVR, Inc., owner, expressly reserves its copyright in these plans. These plans are not to be reproduced, changed, copied, or otherwise used in any way without the written consent of NVR, Inc.

REV. NO.	DATE	REMARKS

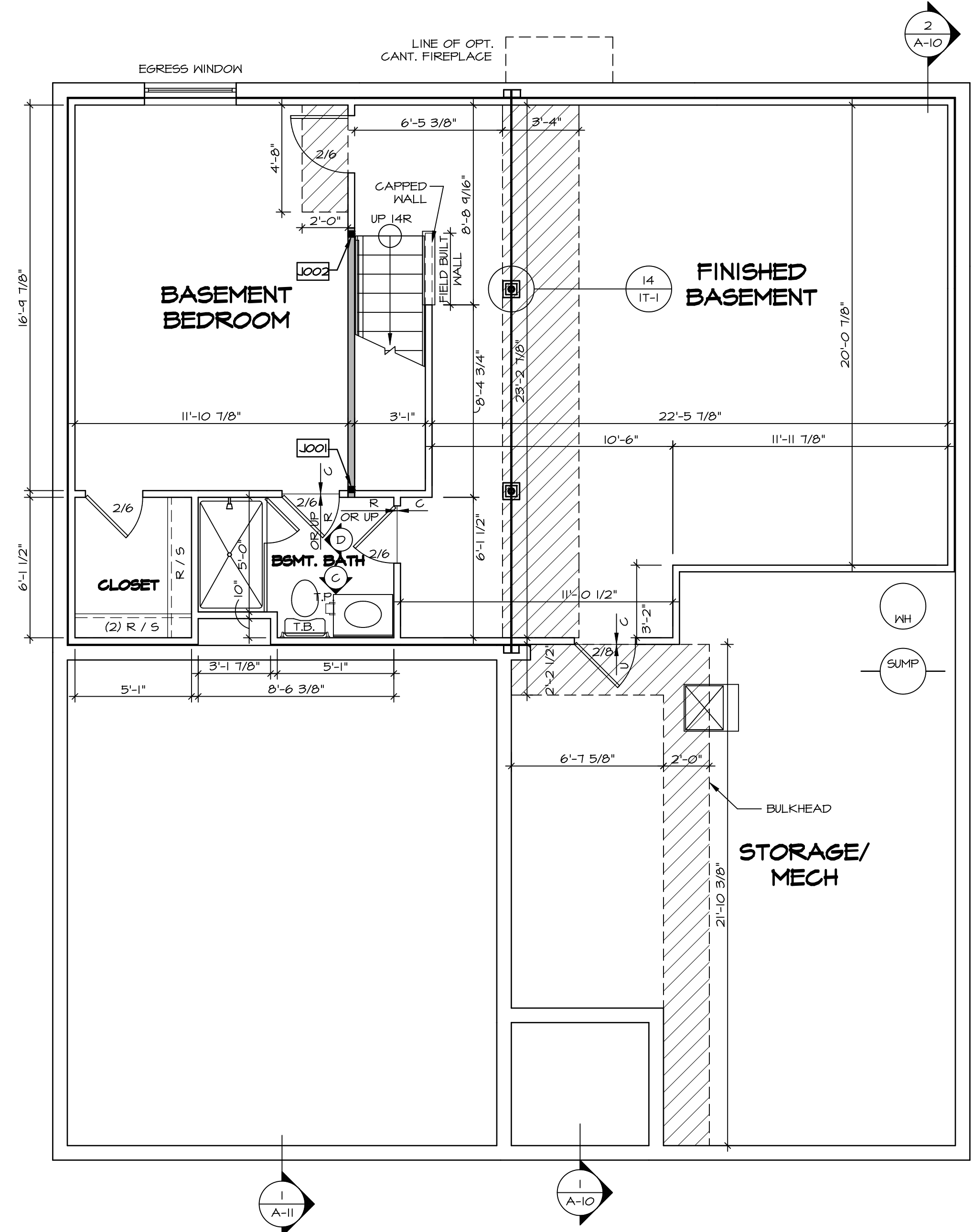
LEGEND	
	BEARING WALL
	NON BEARING WALL
	INDICATES BEARING FROM POINT-LOAD ABOVE
	JACKS
	BEAM/HEADER
	PAD FOOTING
	STEEL COLUMN
	PORTAL FRAME
	JOIST/TRUSS
	LVL
	ENGINEERING PAGE NUMBER

- FLOOR PLAN NOTES**
- ALL HEADERS ARE (2) 2x6 w/ 2x4 WALLS OR (3) 2x6 w/ 2x6 WALLS, UNLESS OTHERWISE NOTED.
 - ALL HEADERS TO HAVE (1) 2x4 OR 2x6 JACK EACH END, UNLESS OTHERWISE NOTED.
 - ALL EXTERIOR WALLS TO BE 4" AND ALL INTERIOR WALLS TO BE 3 1/2" UNLESS OTHERWISE NOTED.
 - HATCHED AREAS INDICATE DROPPED CEILINGS. ALL DROPPED CEILINGS ARE 12" UNLESS OTHERWISE NOTED.
 - SEE "BRACED WALL PANEL DETAIL SHEET" FOR SPECIAL WALL FRAMING LOCATIONS AND HEADER SIZES, IF APPLICABLE.
 - SEE STANDARD DETAIL CATEGORY "IT" SHEET(S) FOR INTERIOR TRIM DETAILS.
 - SEE ARCHITECTURAL DETAIL SHEET "AD" FOR HOUSE SPECIFIC INTERIOR TRIM OPTION TABLE.
 - ALL WINDOWS HAVE 7'-0 1/2" HEADER HEIGHT UNLESS OTHERWISE NOTED.
 - ALL CASED OPENINGS AT 7'-11", UNLESS OTHERWISE NOTED.

- GYPSUM NOTES**
- AT GARAGE:
 GYPSUM BOARD AT COMMON WALLS, CEILINGS, BEAM WRAPS AND SUPPORTS PER STANDARD DETAIL FA-1(b) FIRE ASSEMBLIES OR AS REQUIRED BY LOCAL CODE.
- AT STAIRS:
 1/2" GYPSUM BOARD AT UNDERSIDE OF STAIRS AND WALLS IN CLOSET
- BASEMENT WITH I-JOIST FLOOR SYSTEM ABOVE:
 WITH OPTION "SG1" - DRYWALL UNFINISHED BASEMENT CEILING AREA
- NOTES:**
- 1/2" GYPSUM WALL BOARD REQUIRED ON CEILING IN UNFINISHED AREAS WHEN NO SPRINKLER SYSTEM IS INSTALLED.
 - A MAXIMUM AREA OF 80 SQ FT MAY BE OMITTED AS NEEDED FOR INSTALLATION OF PLUMBING, ELECTRICAL, AND/OR HVAC (TYPICALLY AN 8'-0"x8'-0" CEILING SPACE ABOVE MECHANICAL AREA).
 - PROVIDE FIRE BLOCKING AS REQUIRED AT PERIMETER OF ANY AREAS WHERE DRYWALL HAS BEEN OMITTED.

BASEMENT JACK SCHEDULE

IDENTIFIER	DESCRIPTION	OPTIONS	ENG. NUM.	REMARKS
J001	JACK - (2) 2X4 SFF STUD GRADE		B0004	
J002	JACK - (2) 2X4 SFF STUD GRADE		B0004	



BASEMENT FLOOR PLAN
 SCALE: 1/4" = 1'-0"

SHEET NO. A-6	MODEL PISA TORRE	SET NO. P5TCO	VERSION 03
		DRAWN BY	DATE:
DRAWING TITLE BASEMENT FLOOR PLAN	OPTION DESCRIPTION	OPTION	
		OPTION	
 NVR, Inc. Architectural Services 5285 West... Frederick, MD 21703		SET NO. P5TCO VERSION 03 DRAWN BY DATE: OPTION	SHEET NO. 18
C:\NVA\Solves\PISA_TORRE_P5TCO_03\DCY-CH-X409\1105866\SheetA\Lot_Specific\18_A-6_BSMT_LS.dwg 02/06/19 - 6:46 am		REMARKS	REV. NO. DATE

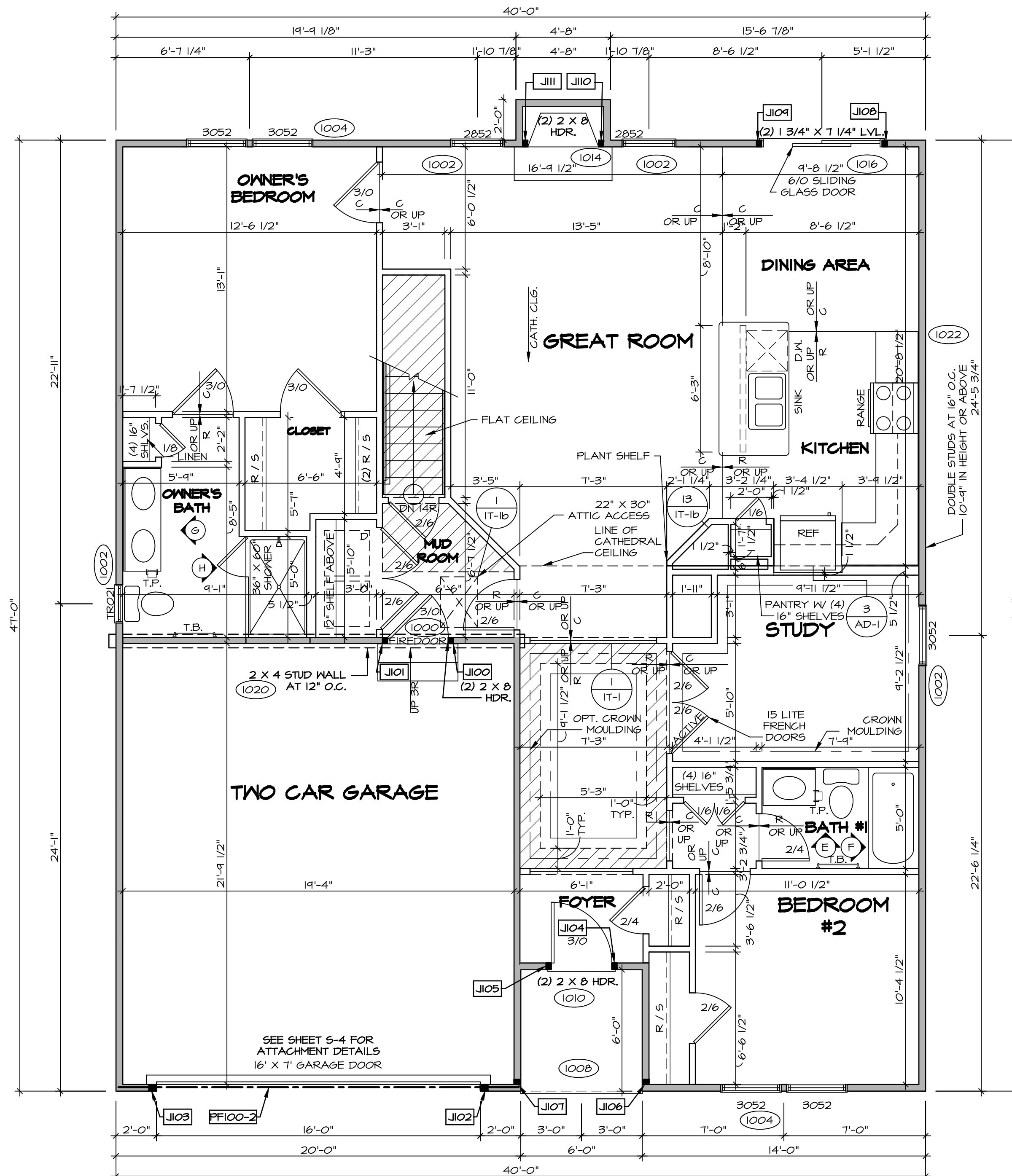
FIRST FLOOR JACK SCHEDULE				
IDENTIFIER	DESCRIPTION	OPTIONS	ENG. NUM.	REMARKS
J100	JACK - (2) 2X4 SPF STUD GRADE	SXC	1000	
J101	JACK - (2) 2X4 SPF STUD GRADE	SXC	1000	
J102	JACK - (3) 2X4 SPF STUD GRADE	SXC	1012	
J103	JACK - (3) 2X4 SPF STUD GRADE	SXC	1012	
J104	JACK - (2) 2X4 SPF STUD GRADE	SXC	1010	
J105	JACK - (2) 2X4 SPF STUD GRADE	SXC	1010	
J106	JACK - (2) 2X4 SPF STUD GRADE	SXC	1008	
J107	JACK - (2) 2X4 SPF STUD GRADE	SXC	1008	
J108	JACK - (2) 2X4 SPF STUD GRADE	ZLC	1016	
J109	JACK - (2) 2X4 SPF STUD GRADE	ZLC	1016	
J110	JACK - (2) 2X4 SPF STUD GRADE	SXC	1014	
J111	JACK - (2) 2X4 SPF STUD GRADE	SXC	1014	

LVL PLY TO PLY FASTENING SCHEDULE: (WHERE APPLICABLE BASED ON LVL USAGE)

- 1.A - (2) PLY UP TO AND INCLUDING 11 7/8" TALL; FASTEN PLYS W/ (2) ROWS 16D NAILS AT 12" O.C.
- 2.A - (2) PLY 14" TO AND 18" TALL (INCLUSIVE); FASTEN PLYS W/ (3) ROWS 16D NAILS AT 12" O.C.
- 3.A - (2) PLY 20" TALL AND OVER; FASTEN PLYS W/ (4) ROWS 16D NAILS AT 12" O.C.
- 4.A - (3) PLY UP TO AND INCLUDING 11 7/8" TALL; FASTEN PLYS W/ (2) ROWS 16D NAILS AT 12" O.C. FROM EACH SIDE
- 5.A - (3) PLY 14" TO AND 18" TALL (INCLUSIVE); FASTEN PLYS W/ (3) ROWS 16D NAILS AT 12" O.C. FROM EACH SIDE
- 6.A - (3) PLY 20" TALL AND OVER; FASTEN PLYS W/ (4) ROWS 16D NAILS AT 12" O.C. FROM EACH SIDE
- 7.A - (4) PLY (ALL SIZES); FASTEN PLYS W/ (2) ROWS 1/2" DIAMETER A307 BOLTS AT 24" O.C. SEE SHOP DRAWINGS FOR ADDITIONAL INFORMATION.

FIELD INSTALLED FIRST FLOOR BEAM/HEADER SCHEDULE

IDENTIFIER	DESCRIPTION	LENGTH	OPTIONS	ENG. NUM.	REMARKS
PF100-2	LVL - 14	19'-4"		1012	2.A



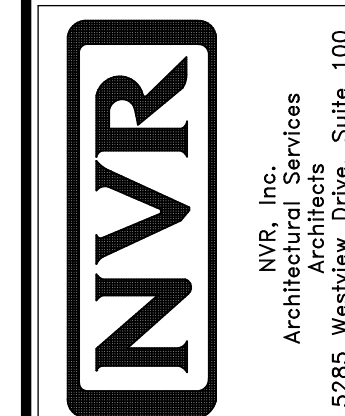
LEGEND	
	BEARING WALL
	NON BEARING WALL
	INDICATES BEARING FROM POINT-LOAD ABOVE
	JACKS
	BEAM/HEADER
	PAD FOOTING
	STEEL COLUMN
	PORTAL FRAME
	JOIST/TRUSS
	LVL
	ENGINEERING PAGE NUMBER

SEE FC DETAILS FOR FRAMING CONNECTORS

- FLOOR PLAN NOTES**
- ALL HEADERS ARE (2) 2x6 w/ 2x4 WALLS OR (3) 2x6 w/ 2x6 WALLS, UNLESS OTHERWISE NOTED.
 - ALL HEADERS TO HAVE (1) 2x4 OR 2x6 JACK AND KING STUD EACH END, UNLESS OTHERWISE NOTED.
 - ALL EXTERIOR WALLS TO BE 4" AND ALL INTERIOR WALLS TO BE 3 1/2", UNLESS OTHERWISE NOTED.
 - HATCHED AREAS INDICATE DROPPED CEILINGS. ALL DROPPED CEILINGS ARE 12" UNLESS OTHERWISE NOTED.
 - SEE "BRACED WALL PANEL DETAIL SHEET" FOR SPECIAL WALL FRAMING LOCATIONS AND HEADER SIZES, IF APPLICABLE.
 - SEE STANDARD DETAIL CATEGORY "IT" SHEETS(S) FOR INTERIOR TRIM DETAILS.
 - SEE ARCHITECTURAL DETAIL SHEET "AD" FOR HOUSE SPECIFIC INTERIOR TRIM OPTION TABLE.
 - ALL WINDOWS HAVE T-0 1/2" HEADER HEIGHT UNLESS OTHERWISE NOTED.
 - ALL CASED OPENINGS AT 7'-11", UNLESS OTHERWISE NOTED.
 - ALL HEADERS IN NON-BEARING WALLS SHALL BE A SINGLE FLAT 2X4 OR 2X6 ATTACHED TO CRIPPLES ABOVE, UNLESS OTHERWISE NOTED.

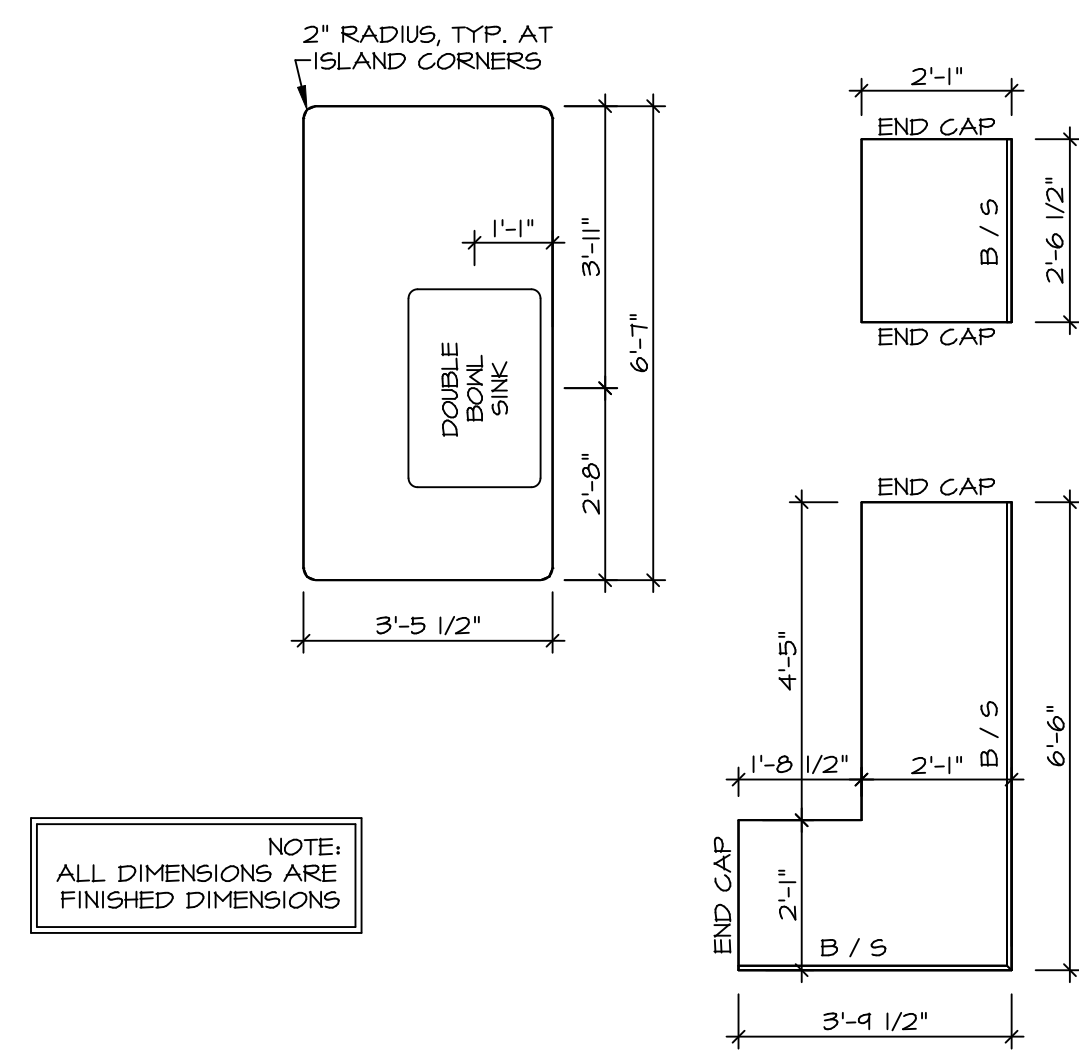
- GYPSUM NOTES**
- AT GARAGE:**
GYPSUM BOARD AT COMMON WALLS, CEILINGS, BEAM WRAPS AND SUPPORTS PER STANDARD DETAIL FA-1(b) FIRE ASSEMBLIES OR AS REQUIRED BY LOCAL CODE.
- AT STAIRS:**
1/2" GYPSUM BOARD AT UNDERSIDE OF STAIRS AND WALLS IN CLOSET

NVR, Inc., owner, expressly reserves the copyright in these plans. These plans are not to be reproduced, changed, copied, or otherwise used in any way without the written consent of NVR, Inc.

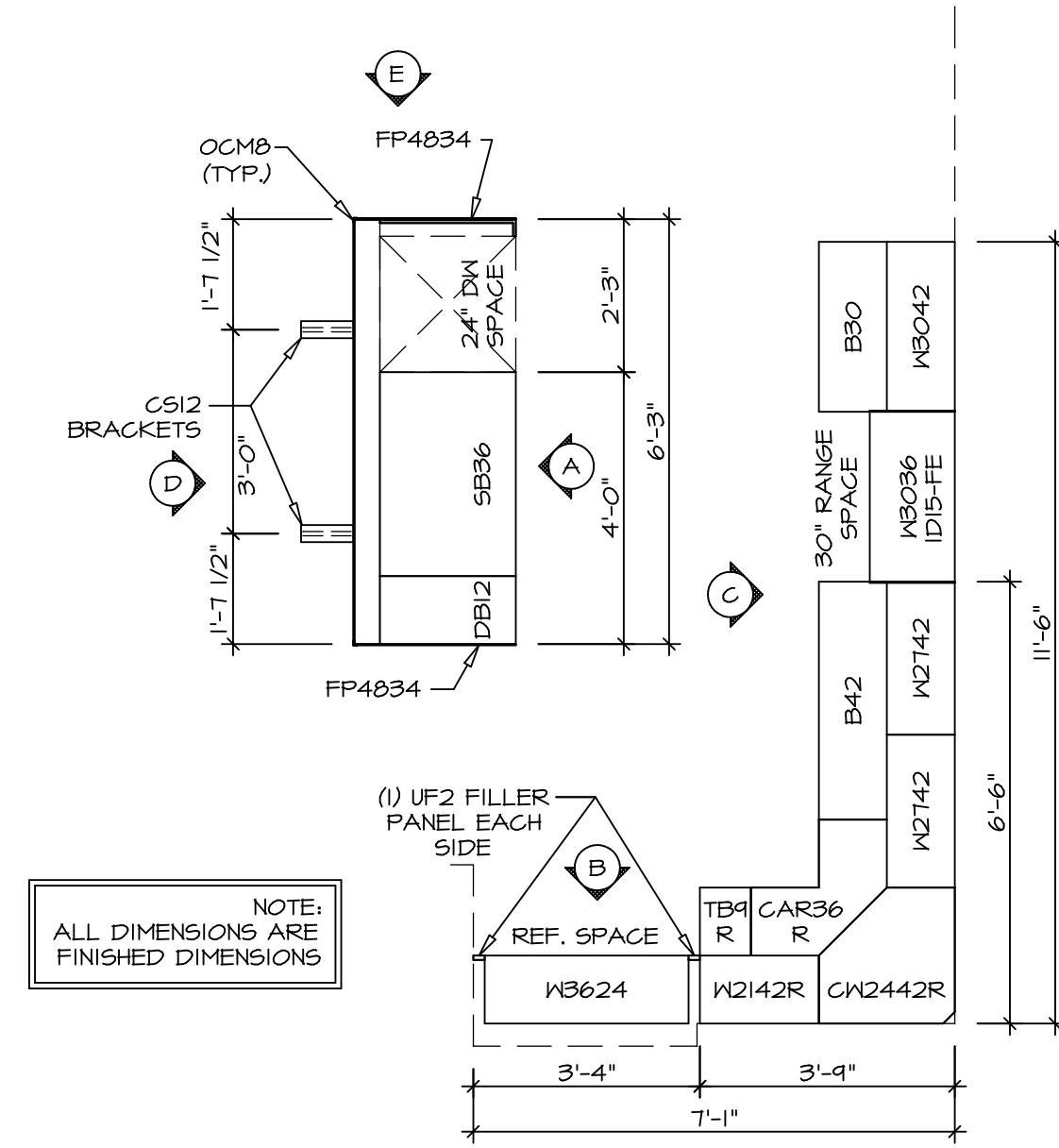


MODEL	PISA TORRE
DRAWING TITLE	FIRST FLOOR PLAN
OPTION DESCRIPTION	
SHEET NO.	A-7
OPTION	20

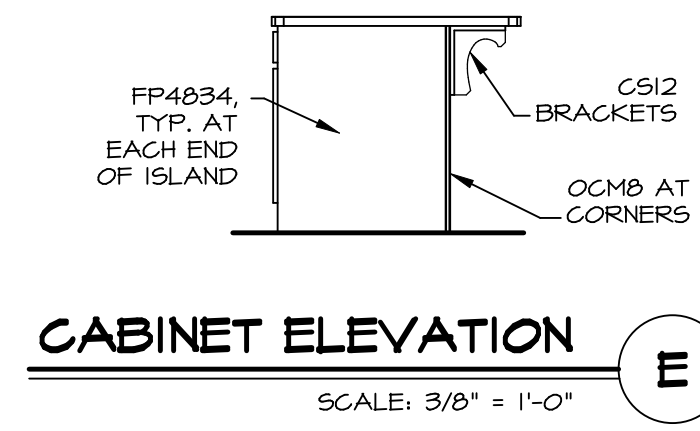
FIRST FLOOR PLAN
SCALE: 1/4" = 1'-0"



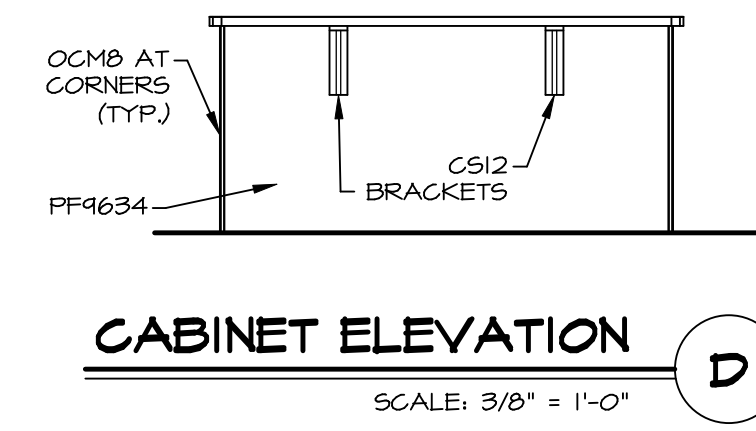
(KT-3360)
COUNTERTOP LAYOUT 2
 SCALE: 3/8" = 1'-0" A-12



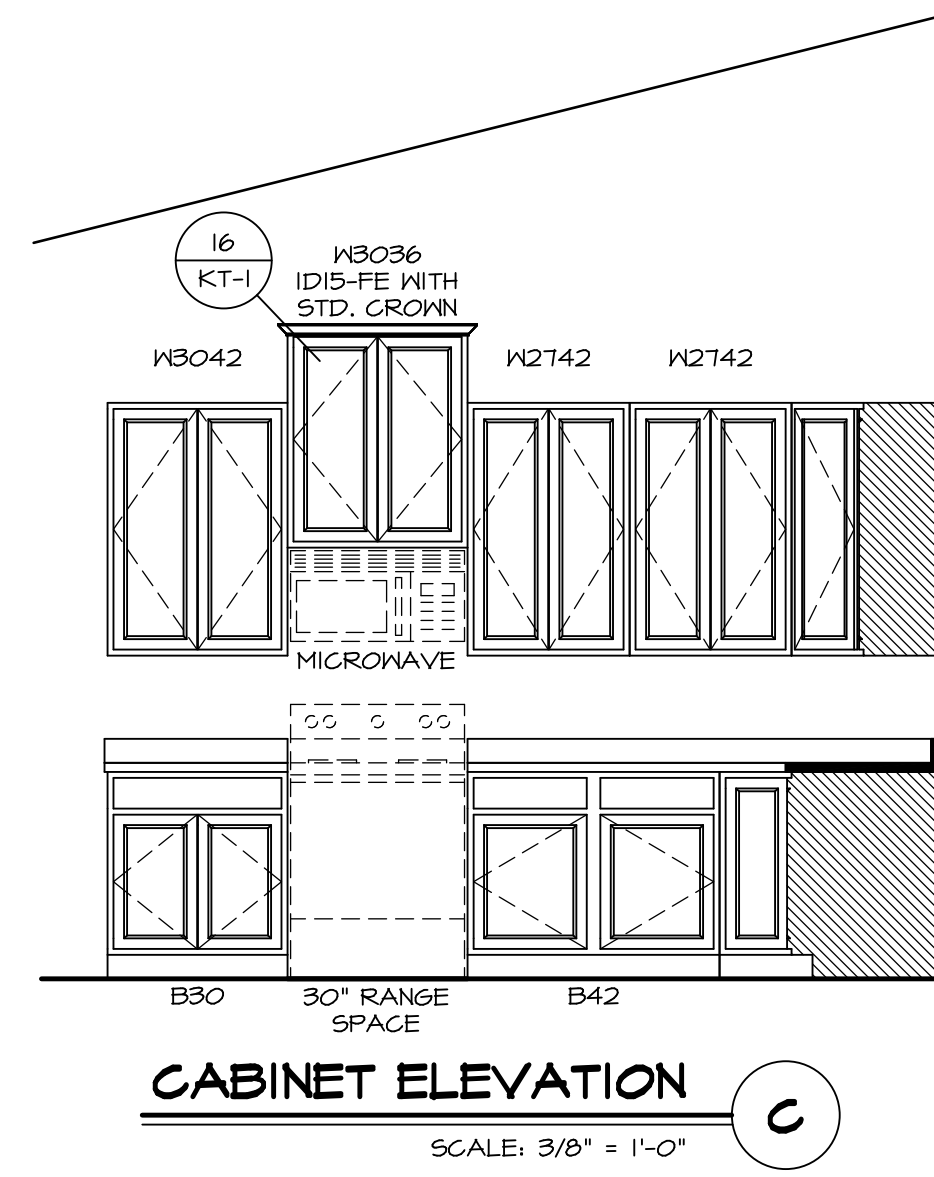
(KC-3360)
CABINET LAYOUT 1
 SCALE: 3/8" = 1'-0" A-12



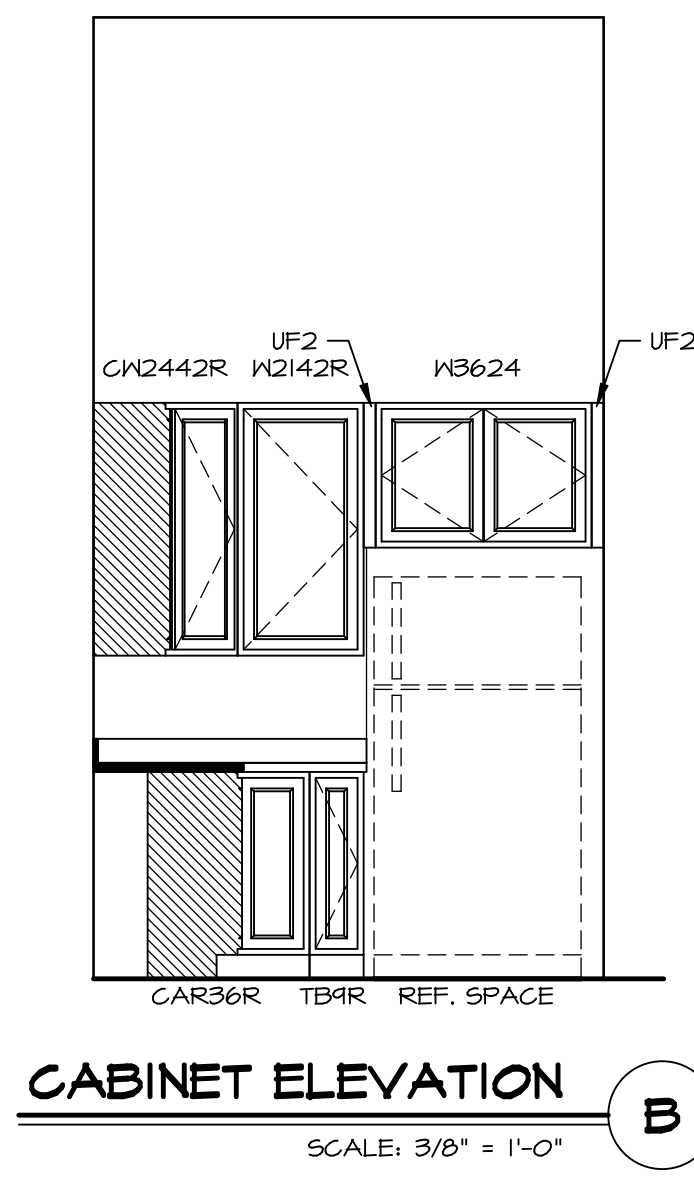
CABINET ELEVATION E
 SCALE: 3/8" = 1'-0"



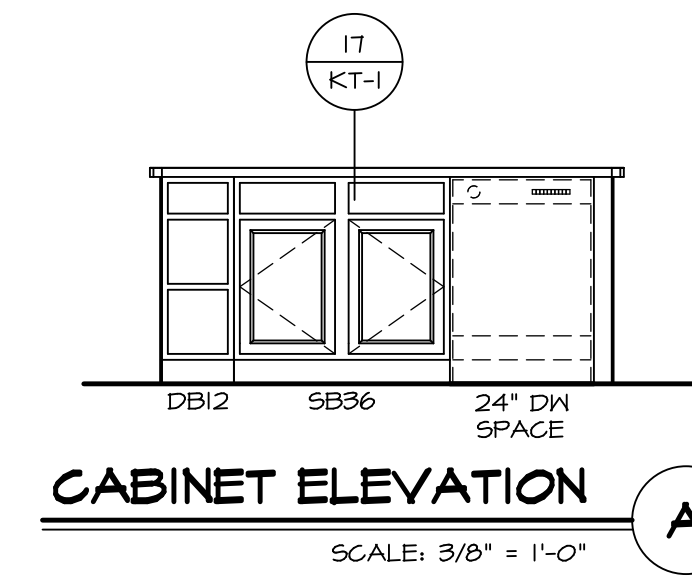
CABINET ELEVATION D
 SCALE: 3/8" = 1'-0"



CABINET ELEVATION C
 SCALE: 3/8" = 1'-0"

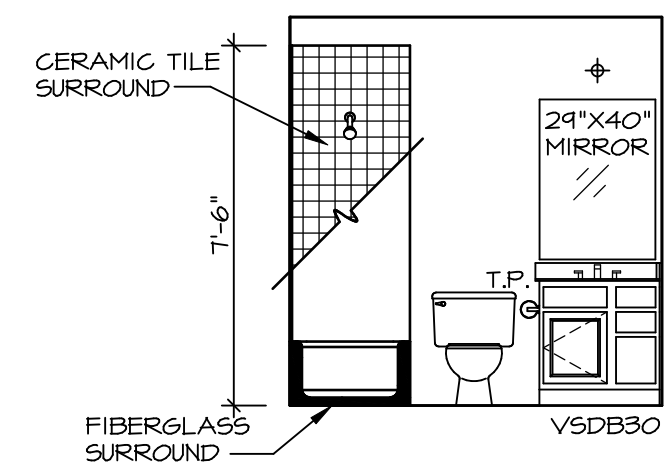


CABINET ELEVATION B
 SCALE: 3/8" = 1'-0"

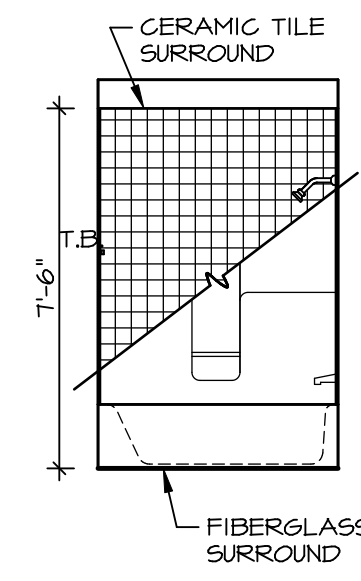


CABINET ELEVATION A
 SCALE: 3/8" = 1'-0"

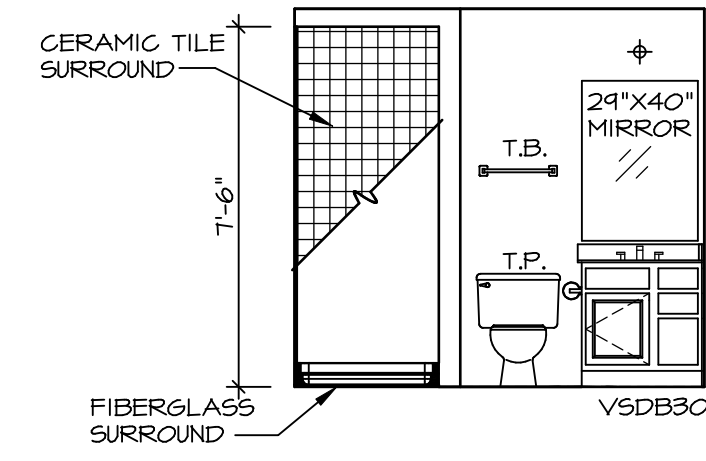
SHEET NO. A-13	MODEL PISA TORRE DRAWING TITLE KITCHENS OPTION DESCRIPTION	SET NO. PS100 VERSION 03 DRAWN BY DATE: OPTION
27		
 NVR, Inc. Architects 5285 Westminister Lane, Suite 100 Frederick, MD 21703		
NVR, Inc., owner, expressly reserves its copyright in these plans. These plans are not to be reproduced, changed, copied in any way, or otherwise disseminated, without the prior written consent of NVR, Inc.		
REV. NO.	DATE	REMARKS



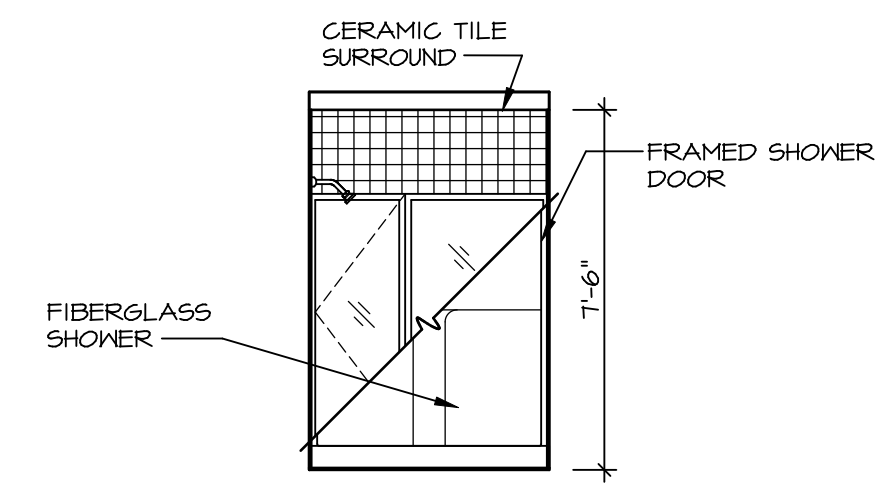
E BATH #1
SCALE: 1/4" = 1'-0"



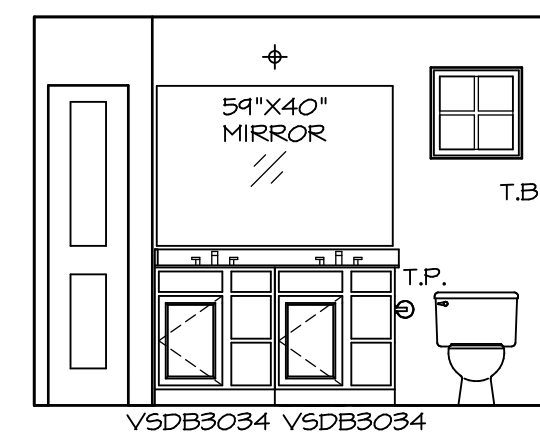
F BATH #1
SCALE: 1/4" = 1'-0"



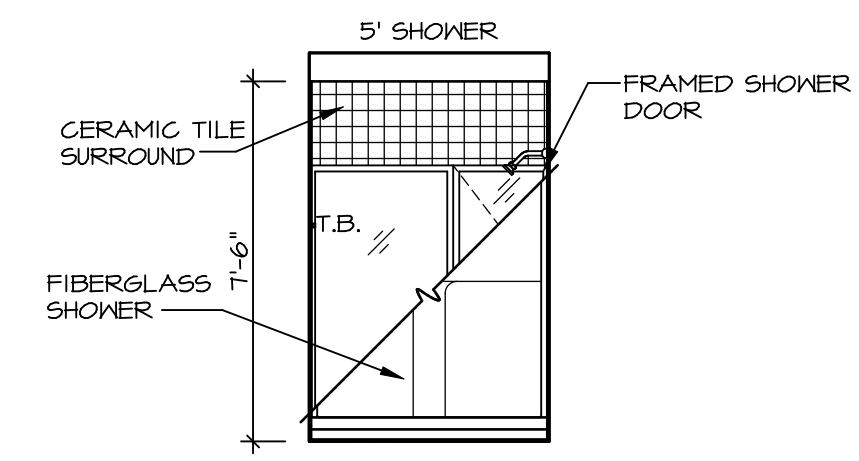
C BASEMENT BATH
SCALE: 1/4" = 1'-0"



D BASEMENT BATH
SCALE: 1/4" = 1'-0"



G OWNER'S BATH
SCALE: 1/4" = 1'-0"



H OWNER'S BATH
SCALE: 1/4" = 1'-0"

NOTES:

- TEMPERED GLASS SHOWER ENCLOSURE WITH SWING DOOR OR OPTIONAL SLIDING DOOR BY DIVISION
- TUB ACCESS PANELS PROVIDED AS NEEDED, ALL MATERIALS BY DIVISION
- REFER TO SHEET IT-2 FOR TUB AND SHOWER DETAILS.
- ALL VSDB24-42 DRAWERS TO BE SET ON RIGHT HAND.
- BATH ELEVATIONS ARE SHOWN PER PLAN.

SHEET NO.	MODEL	SET NO.	OPTION
A-14	PISA TORRE	PS100_03	
	DRAWING TITLE	VERSION	DATE
	BATH ELEVATIONS	03	
		DRAWN BY	
		DATE:	
		OPTION	

NVR
NVR, Inc.
Architectural Services
Architects
5285 Westheimer Blvd, Suite 100
Frederick, MD 21703

NVR, Inc., owner, expressly reserves its copyright in these plans. These plans are not to be reproduced, changed, copied, or otherwise used in any way without the prior written consent of NVR, Inc.

REV. NO.	DATE	REMARKS