

1  
A-5

**PLUMBING PLAN**

SCALE: 1/4" = 1'-0"

SHEET NO.  
**A-5**

MODEL  
**PISA TORRE**

DRAWING TITLE  
**PLUMBING PLAN**

OPTION DESCRIPTION  
**31**

SET NO. **PS100**  
VERSION **02**  
DRAWN BY  
DATE:  
OPTION

**NVR**  
NVR, Inc.  
Architectural Services  
5285 Westpark Drive, Suite 100  
Frederick, MD 21703

NVR, Inc., owner, expressly reserves its copyright in these plans. These plans are not to be reproduced, changed, copied, or otherwise used without the written consent of NVR, Inc.

REV. NO. DATE

REV. NO.	DATE	REMARKS

FIRST FLOOR JACK SCHEDULE				
IDENTIFIER	DESCRIPTION	OPTIONS	ENG. NUM.	REMARKS
J01	JACK - (2) 2X4 SPF STUD GRADE		1051 / 1050	
J02	JACK - (2) 2X4 SPF STUD GRADE		1051 / 1050	
J03	JACK - (5) 2X4 SP#1	SXC	1051	STEEL PLATE
J04	JACK - (5) 2X4 SP#1	SXC	1051	STEEL PLATE
J05	JACK - (2) 2X4 SPF STUD GRADE	ZCC / SXC	1062	
J06	JACK - (2) 2X4 SPF STUD GRADE	ZCC / SXC	1062	
J07	JACK - (5) 2X4 SP#1	MAA / SXC	1051	STEEL PLATE
J08	JACK - (5) 2X4 SP#1	MAA / SXC	1051	STEEL PLATE
J09	JACK - (5) 2X4 SP#1	MAR / SXC	1051	STEEL PLATE
J10	JACK - (5) 2X4 SP#1	MAR / SXC	1051	STEEL PLATE
J11	JACK - (3) 2X4 SPF STUD GRADE	GCF / ZCC	1006	
J12	JACK - (3) 2X4 SPF STUD GRADE	GCF / ZCC	1006	
J13	JACK - (2) 2X4 SPF STUD GRADE	GCF	1064	
J14	JACK - (2) 2X4 SPF STUD GRADE	GCF	1064	

LEGEND	
	BEARING WALL
	NON BEARING WALL
	INDICATES BEARING FROM POINT-LOAD ABOVE
	JACKS
	BEAM/HEADER
	PAD FOOTING
	STEEL COLUMN
	PORTAL FRAME
	JOIST/TRUSS
	LVL
	ENGINEERING PAGE NUMBER

**LVL PLY TO PLY FASTENING SCHEDULE:**

1.A - (2) PLY UP TO AND INCLUDING 11 7/8" TALL; FASTEN PLYS W/ (2) ROWS 16D NAILS AT 12" O.C.  
 2.A - (2) PLY 14" TO AND 18" TALL (INCLUSIVE); FASTEN PLYS W/ (3) ROWS 16D NAILS AT 12" O.C.  
 3.A - (2) PLY 20" TALL AND OVER; FASTEN PLYS W/ (4) ROWS 16D NAILS AT 12" O.C.  
 4.A - (3) PLY UP TO AND INCLUDING 11 7/8" TALL; FASTEN PLYS W/ (2) ROWS 16D NAILS AT 12" O.C. FROM EACH SIDE  
 5.A - (3) PLY 14" TO AND 18" TALL (INCLUSIVE); FASTEN PLYS W/ (3) ROWS 16D NAILS AT 12" O.C.  
 6.A - (3) PLY 20" TALL AND OVER; FASTEN PLYS W/ (4) ROWS 16D NAILS AT 12" O.C. FROM EACH SIDE

**FIELD INSTALLED FIRST FLOOR BEAM/HEADER SCHEDULE**

IDENTIFIER	DESCRIPTION	LENGTH	OPTIONS	ENG. NUM.	REMARKS
PF05-2	LVL - 14	14'-4"	GCF / ZCC	1006	2 PLYM, 2A
PF08-2	EXT HEADER - 2X12 - 2 PLY	11'-4"	GCF	1064	

**FLOOR PLAN NOTES**

- ALL HEADERS ARE (2) 2x6 w/ 2x4 WALLS OR (3) 2x6 w/ 2x6 WALLS, UNLESS OTHERWISE NOTED.
- ALL HEADERS TO HAVE (1) 2x4 OR 2x6 JACK EACH END, UNLESS OTHERWISE NOTED.
- ALL EXTERIOR WALLS TO BE 4" AND ALL INTERIOR WALLS TO BE 3 1/2", UNLESS OTHERWISE NOTED.
- HATCHED AREAS INDICATE DROPPED CEILINGS. ALL DROPPED CEILINGS ARE 12' UNLESS OTHERWISE NOTED.
- SEE "BRACED WALL PANEL DETAIL SHEET" FOR SPECIAL WALL FRAMING LOCATIONS AND HEADER SIZES, IF APPLICABLE.
- SEE STANDARD DETAIL CATEGORY "IT" SHEET(S) FOR INTERIOR TRIM DETAILS.
- SEE ARCHITECTURAL DETAIL SHEET "AD" FOR HOUSE SPECIFIC INTERIOR TRIM OPTION TABLE.
- ALL WINDOWS HAVE T-0 1/2" HEADER HEIGHT UNLESS OTHERWISE NOTED.

**GYPSUM NOTES**

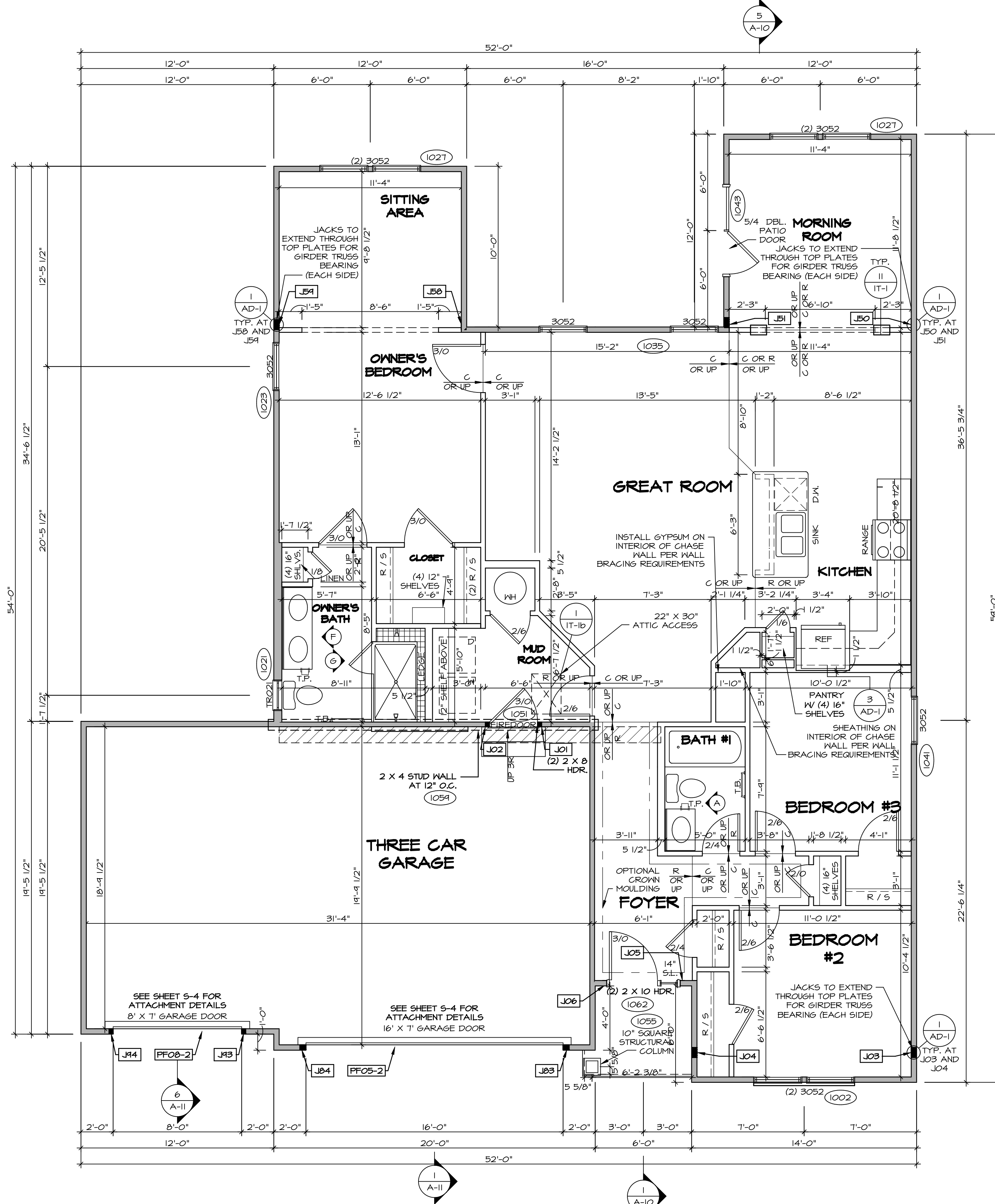
**AT GARAGE:**  
 GYPSUM BOARD AT COMMON WALLS, CEILING, BEAM WRAPS AND SUPPORTS PER STANDARD DETAIL FA-1(b) FIRE ASSEMBLIES OR AS REQUIRED BY LOCAL CODE.

**AT STAIRS:**  
 1/2" GYPSUM BOARD AT UNDERSIDE OF STAIRS AND WALLS IN CLOSET

**BASEMENT WITH I-JOIST FLOOR SYSTEM ABOVE:**  
 WITH OPTION "SG1" - DRYWALL UNFINISHED BASEMENT CEILING AREA

**NOTES:**

- 1/2" GYPSUM WALL BOARD REQUIRED ON CEILING IN UNFINISHED AREAS WHEN NO SPRINKLER SYSTEM IS INSTALLED
- A MAXIMUM AREA OF 80 SQ FT MAY BE OMITTED AS NEEDED FOR INSTALLATION OF PLUMBING, ELECTRICAL, AND/OR HVAC (TYPICALLY AN 8'-0"x8'-0" CEILING SPACE ABOVE MECHANICAL AREA).
- PROVIDE FIRE BLOCKING AS REQUIRED AT PERIMETER OF ANY AREAS WHERE DRYWALL HAS BEEN OMITTED.



**FIRST FLOOR PLAN**  
 SCALE: 1/4" = 1'-0"

MODEL	PISA TORRE	SET NO.	PS100
DRAWING TITLE	FIRST FLOOR PLAN	VERSION	02
OPTION DESCRIPTION	CORNERSTONE SPECIFICATIONS	DRAWN BY	
SHEET NO.	A-7	DATE:	OPTION
	36		

REV. NO. DATE

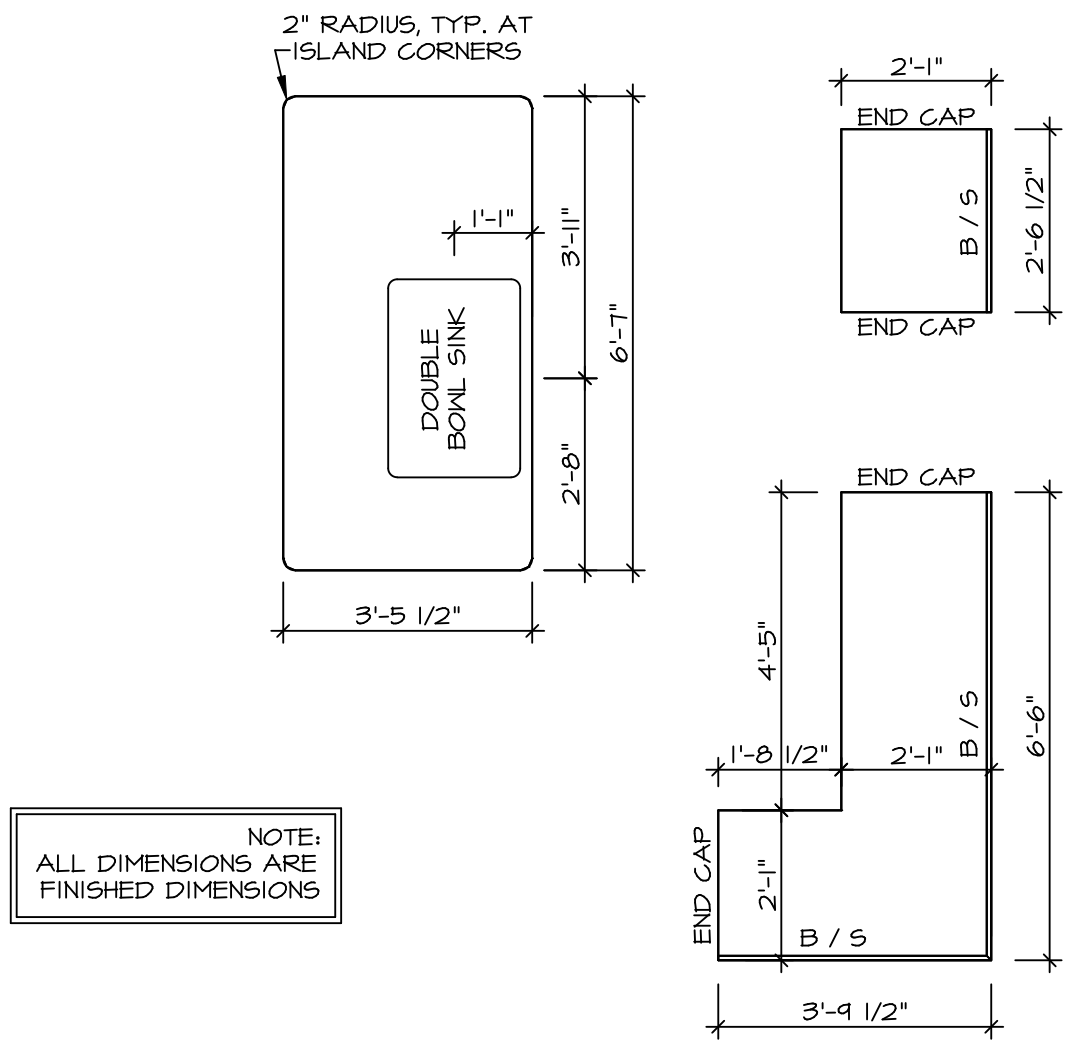
08/07/16 TH - DRAWING ALIGNMENT

REMARKS

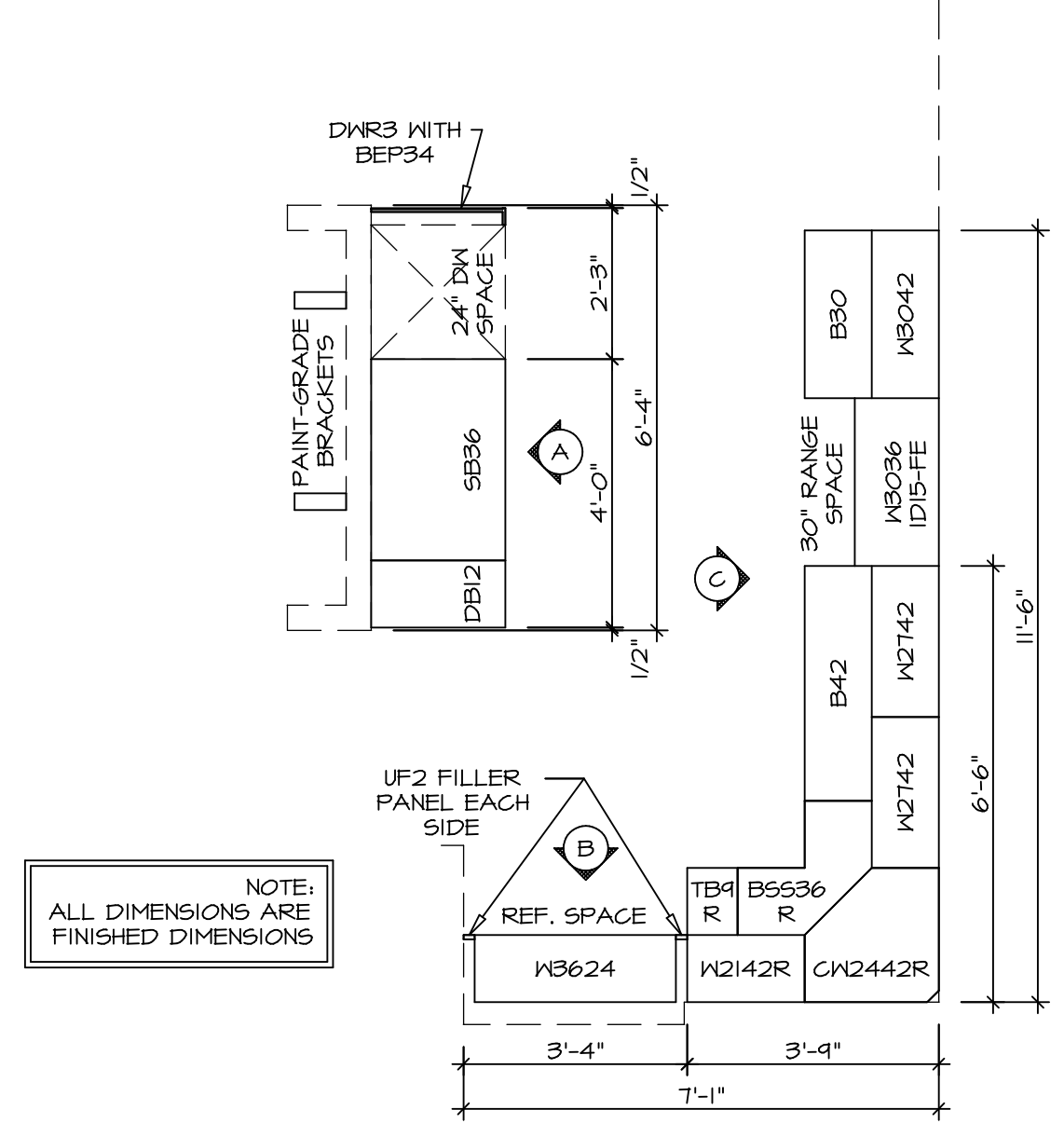
NVR, Inc., owner, expressly reserves its copyright in these plans. These plans are not to be reproduced, changed, copied, or otherwise used in any way without the prior written consent of NVR, Inc.

**NVR**  
 NVR, Inc.  
 Architectural Services  
 5285 West Bethesda Avenue, Suite 100  
 Bethesda, MD 20814

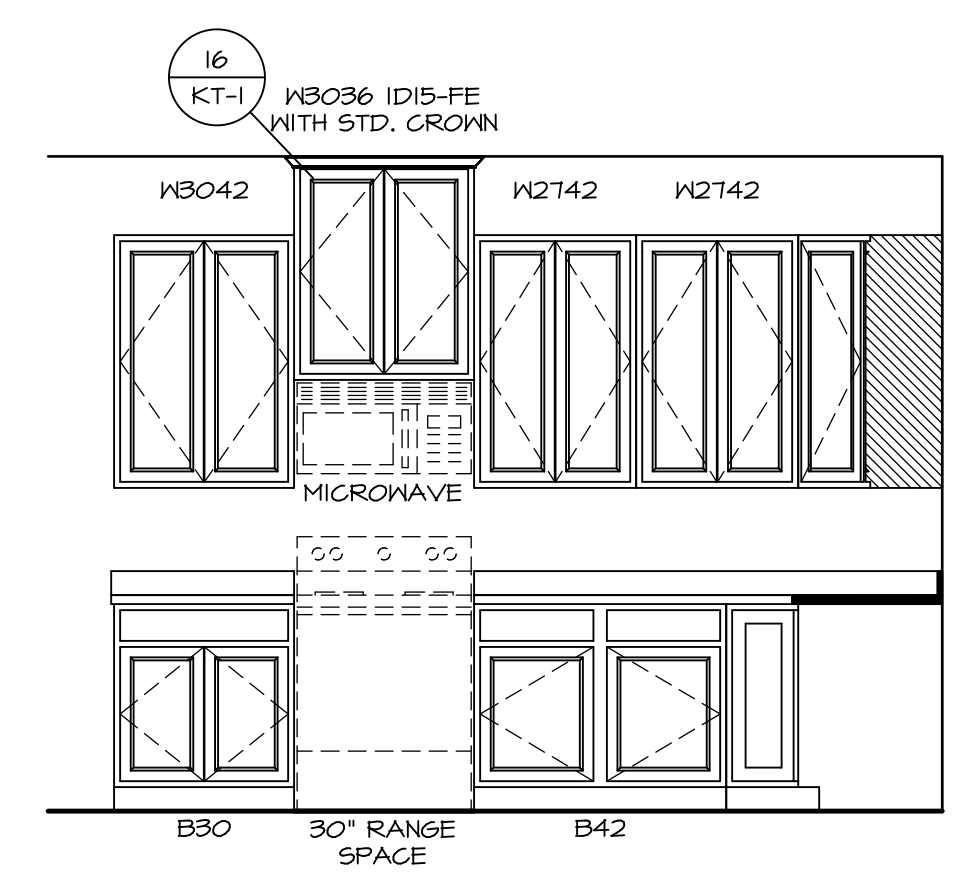
C:\NVR\Solves\PISA\_TORRE\_PS100\_02\_V01-CH-X410-1214138\_Sheets\Lot\_Specific\36\_A-7\_PLN1\_SXC\_LS.dwg 05/07/19 - 8:09 am



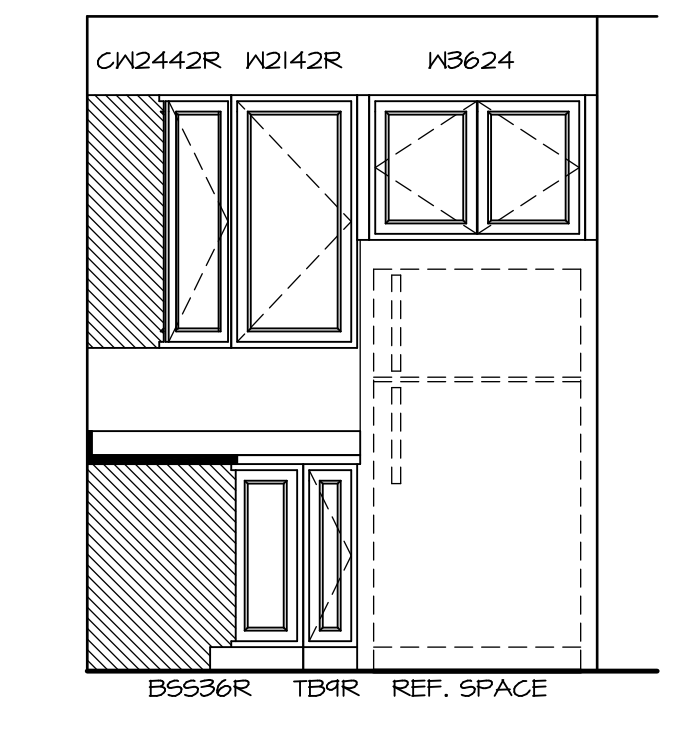
(KT-3209)  
**COUNTERTOP LAYOUT** 2  
 SCALE: 3/8" = 1'-0" A-13



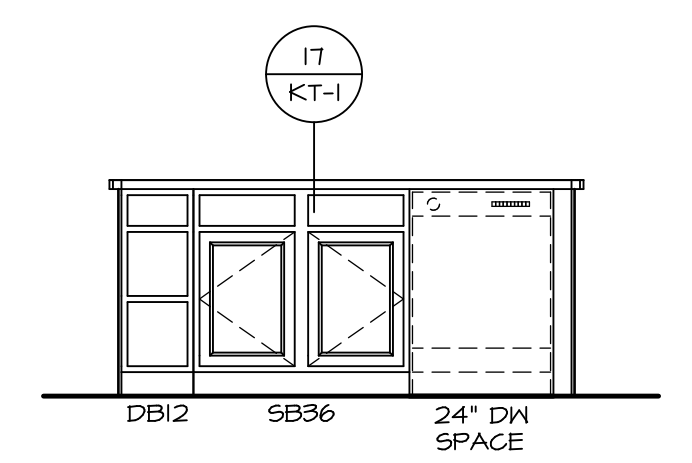
(KC-3209)  
**CABINET LAYOUT** 1  
 SCALE: 3/8" = 1'-0" A-13



**CABINET ELEVATION** C  
 SCALE: 3/8" = 1'-0"

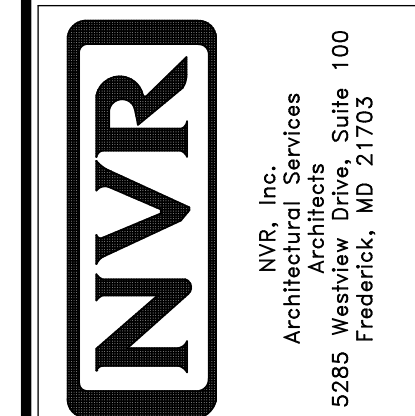


**CABINET ELEVATION** B  
 SCALE: 3/8" = 1'-0"



**CABINET ELEVATION** A  
 SCALE: 3/8" = 1'-0"

SHEET NO. <b>A-13</b>	MODEL <b>PISA TORRE</b>	DRAWING TITLE <b>KITCHENS</b>	OPTION DESCRIPTION	SET NO. P5TCO	REV. NO. DATE	REMARKS
				VERSION 02		
48	PISA TORRE	KITCHENS	OPTION	DRAWN BY BDH		
				DATE: 3/24/15		



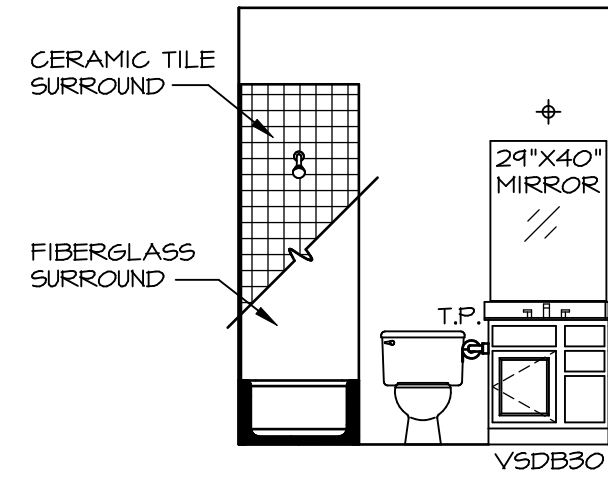
NVR, Inc., owner, expressly reserves its copyright in these plans. These plans are not to be reproduced, changed, copied in any way, or used for any other purpose, without the prior written consent of NVR, Inc.

SET NO. P5TCO  
 VERSION 02  
 DRAWN BY BDH  
 DATE: 3/24/15  
 OPTION

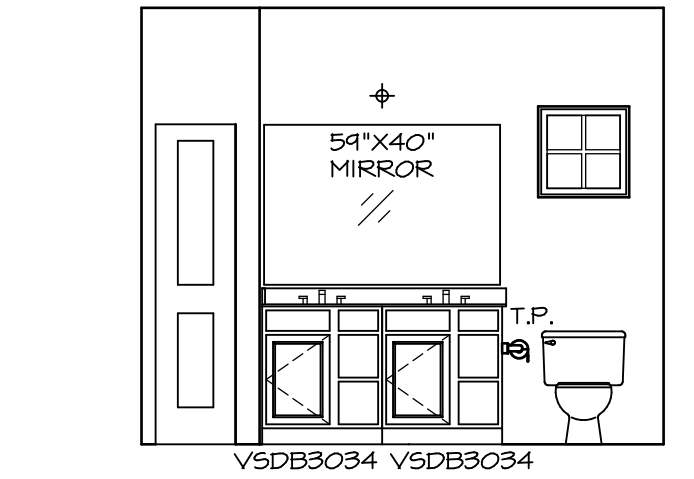
SHEET NO. **A-13**  
 MODEL **PISA TORRE**  
 DRAWING TITLE **KITCHENS**  
 OPTION DESCRIPTION

NVR, Inc.  
 Architects  
 5285 Westheimer Road, Suite 100  
 Fredericks, MD 21703

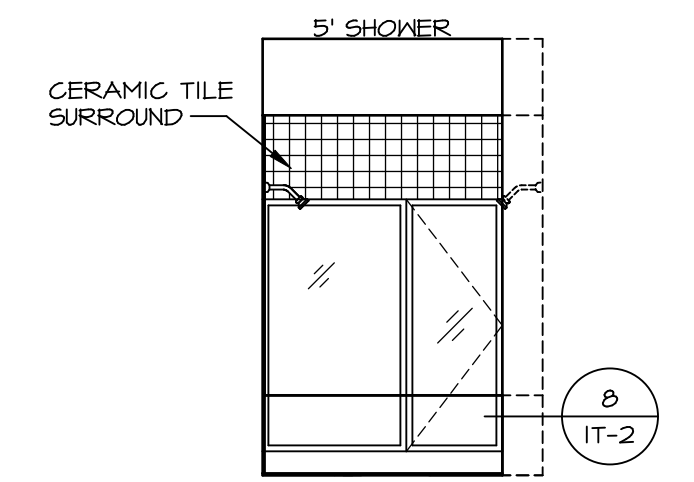
C:\NVR\Solves\PISA\_TORRE\_P5TCO\_02\DCY-CH-X410\1214138\Sheets\Lot\_Specific\48\_A-13\_KIT\_LS.dwg 05/02/19 - 8:09 am



**A BATH #1**  
SCALE: 1/4" = 1'-0"



**F OWNER'S BATH**  
SCALE: 1/4" = 1'-0"



**G OWNER'S BATH**  
SCALE: 1/4" = 1'-0"

**NOTES:**

1. TEMPERED GLASS SHOWER ENCLOSURE WITH SWING DOOR OR OPTIONAL SLIDING DOOR BY DIVISION
2. TUB ACCESS PANELS PROVIDED AS NEEDED, ALL MATERIALS BY DIVISION
3. REFER TO SHEET IT-2 FOR TUB AND SHOWER DETAILS.
4. ALL V5DB24-42 DRAWERS TO BE SET ON RIGHT HAND.
5. BATH ELEVATIONS ARE SHOWN PER PLAN.

NOTES  
• WINDOWS VARY PER OPTION.

SHEET NO. <b>A-14</b>	MODEL <b>PISA TORRE</b>	SET NO. PSTCO
	DRAWING TITLE <b>BATH ELEVATIONS</b>	VERSION 02
	OPTION DESCRIPTION	DRAWN BY
		DATE:
		OPTION
<b>53</b>		

**NVR**  
NVR, Inc.  
Architectural Services  
5285 Westpark Drive, Suite 100  
Frederick, MD 21703

NVR, Inc., owner, expressly reserves its copyright in these plans. These plans are not to be reproduced, changed, adapted in any way, or otherwise used, without the prior written consent of NVR, Inc.

REV. NO.	DATE	DESCRIPTION	REMARKS
1	08/07/16	TM - DRAINING ALIGNMENT	