

LEGEND

	BEARING WALL
	NON BEARING WALL
	INDICATES BEARING FROM POINT-LOAD ABOVE
	JACKS
	BEAM/HEADER
	PAD FOOTING
	STEEL COLUMN
	PORTAL FRAME
	JOIST/TRUSS
	LVL
	ENGINEERING PAGE NUMBER

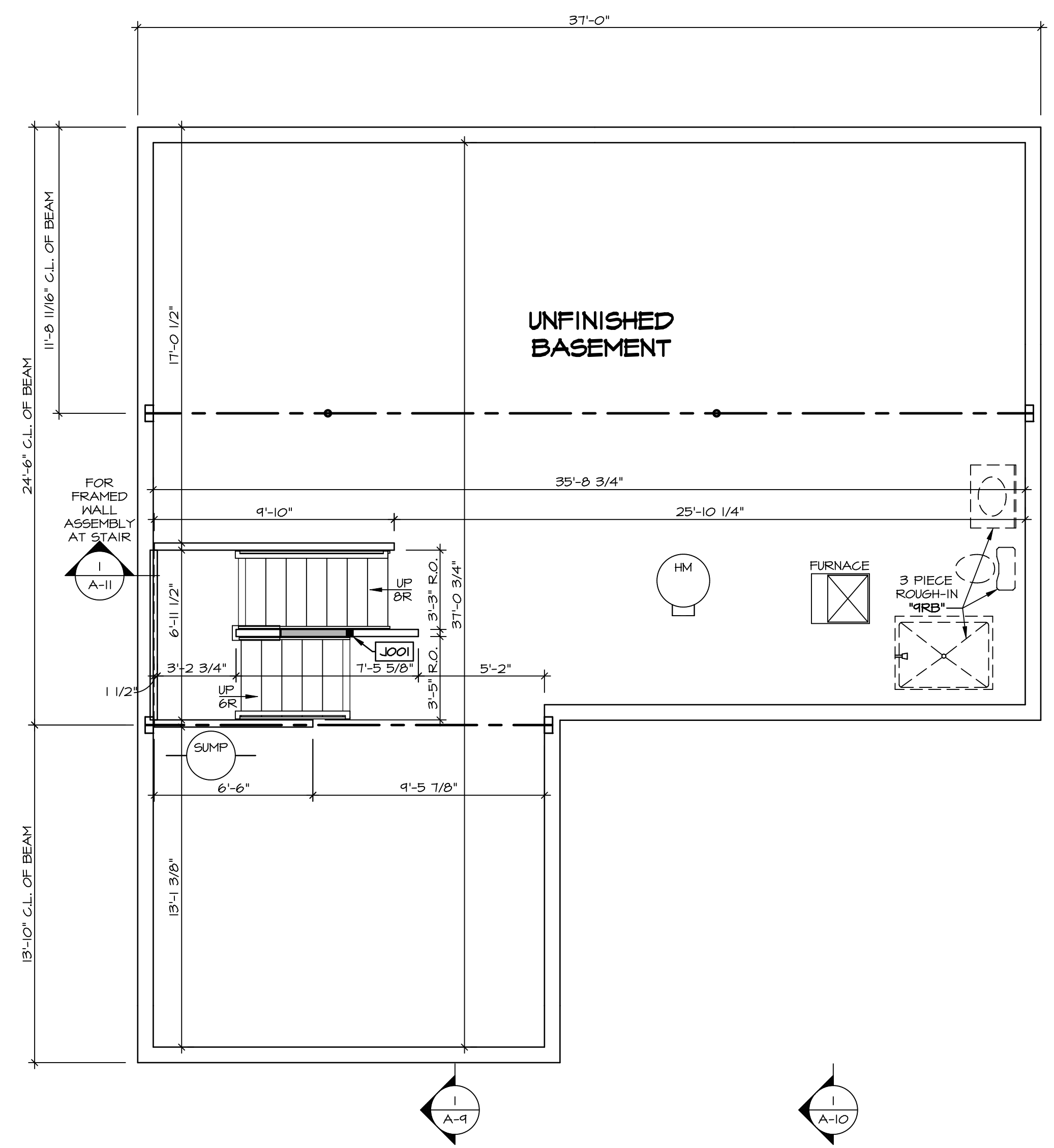
SEE FC DETAILS FOR FRAMING CONNECTORS

- FLOOR PLAN NOTES**
- ALL HEADERS ARE (2) 2x6 w/ 2x4 WALLS OR (3) 2x6 w/ 2x6 WALLS, UNLESS OTHERWISE NOTED.
 - ALL HEADERS TO HAVE (1) 2x4 OR 2x6 JACK AND KING STUD EACH END, UNLESS OTHERWISE NOTED.
 - ALL EXTERIOR WALLS TO BE 4" w/ OSB OR 3 1/2" w/ T-PLY, ALL INTERIOR WALLS TO BE 3 1/2", UNLESS OTHERWISE NOTED.
 - HATCHED AREAS INDICATE DROPPED CEILINGS. ALL DROPPED CEILINGS ARE 12" UNLESS OTHERWISE NOTED.
 - SEE "BRACED WALL PANEL DETAIL SHEET" FOR SPECIAL WALL FRAMING LOCATIONS AND HEADER SIZES, IF APPLICABLE.
 - SEE STANDARD DETAIL CATEGORY "IT" SHEET(S) FOR INTERIOR TRIM DETAILS.
 - SEE ARCHITECTURAL DETAIL SHEET "AD" FOR HOUSE SPECIFIC INTERIOR TRIM OPTION TABLE.
 - ALL WINDOWS HAVE 7'-0 1/2" HEADER HEIGHT UNLESS OTHERWISE NOTED.
 - ALL HEADERS IN NON-BEARING WALLS SHALL BE A SINGLE FLAT 2x4 OR 2x6 ATTACHED TO CRIPPLES ABOVE, UNLESS OTHERWISE NOTED.
 - TANKED WATER HEATER SHOWN AS BASE CONDITION. OPTIONAL TANKLESS WATER HEATER IS AVAILABLE IN LIEU OF TANKED WATER HEATER.

- GYPSUM NOTES**
- AT GARAGE:
GYPSUM BOARD AT COMMON WALLS, CEILINGS, BEAM WRAPS AND SUPPORTS PER STANDARD DETAIL FA-1(b) FIRE ASSEMBLIES OR AS REQUIRED BY LOCAL CODE.
- AT STAIRS:
1/2" GYPSUM BOARD AT UNDERSIDE OF STAIRS AND WALLS IN CLOSET

BASEMENT JACK SCHEDULE

IDENTIFIER	DESCRIPTION	OPTIONS	ENG. NUM.	REMARKS
J001	JACK - (2) 2X4 SFF STUD GRADE	FBA	BOO31	



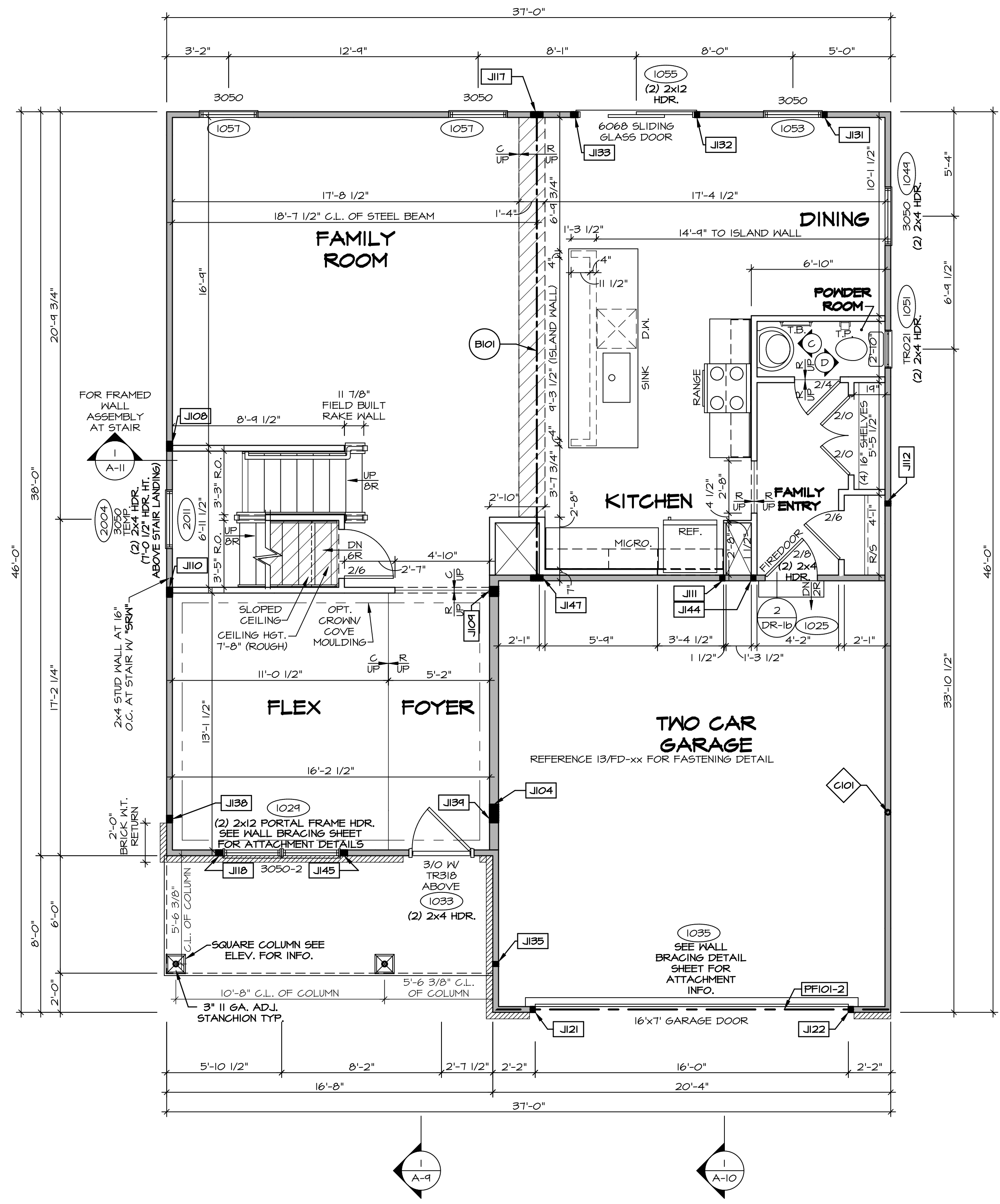
BASEMENT FLOOR PLAN
SCALE: 1/4" = 1'-0"

SHEET NO. A-6	MODEL COLUMBIA	DRAWING TITLE BASEMENT FLOOR PLAN	SET NO. CLM00	VERSION 01	DRAWN BY CVB	DATE:	OPTION	FBA
			OPTION DESCRIPTION BASEMENT FOUNDATION					
26								

© NVR, Inc. expressly reserves the right to modify or change any part of these plans without notice. No part of these plans may be reproduced, stored in a retrieval system, or transmitted in any form or by any means, electronic, mechanical, photocopying, recording, or by any information storage and retrieval system, without the prior written consent of NVR, Inc.

NVR
NVR, Inc. Suite 100
Frederick, MD 21703

C:\NVR\Solves\COLUMBIA_CLM00_01\DCI-CH-X417\130750\Sheets\Lot_Specific\26 A-6 BSMT_LS.dwg 07/14/19 - 7:14 PM



FIRST FLOOR PLAN
SCALE: 1/4" = 1'-0"

LEGEND

- BEARING WALL
- NON BEARING WALL
- INDICATES BEARING FROM POINT-LOAD ABOVE
- JACKS
- BEAM/HEADER
- PAD FOOTING
- STEEL COLUMN
- PORTAL FRAME
- JOIST/TRUSS
- LVL
- ENGINEERING PAGE NUMBER

SEE FC DETAILS FOR FRAMING CONNECTORS

- FLOOR PLAN NOTES**
- ALL HEADERS ARE (2) 2x6 w/ 2x4 WALLS OR (3) 2x6 w/ 2x6 WALLS, UNLESS OTHERWISE NOTED.
 - ALL HEADERS TO HAVE (1) 2x4 OR 2x6 JACK AND KING STUD EACH END, UNLESS OTHERWISE NOTED.
 - ALL EXTERIOR WALLS TO BE 4" w/ OSB OR 3 1/2" w/ T-PLY, ALL INTERIOR WALLS TO BE 3 1/2", UNLESS OTHERWISE NOTED.
 - HATCHED AREAS INDICATE DROPPED CEILINGS. ALL DROPPED CEILINGS ARE 12" UNLESS OTHERWISE NOTED.
 - SEE "BRACED WALL PANEL DETAIL SHEET" FOR SPECIAL WALL FRAMING LOCATIONS AND HEADER SIZES, IF APPLICABLE.
 - SEE STANDARD DETAIL CATEGORY "IT" SHEET(S) FOR INTERIOR TRIM DETAILS.
 - SEE ARCHITECTURAL DETAIL SHEET "AD" FOR HOUSE SPECIFIC INTERIOR TRIM OPTION TABLE.
 - ALL WINDOWS HAVE T-O 1/2" HEADER HEIGHT UNLESS OTHERWISE NOTED.
 - ALL HEADERS IN NON-BEARING WALLS SHALL BE A SINGLE FLAT 2x4 OR 2x6 ATTACHED TO CRIPPLES ABOVE, UNLESS OTHERWISE NOTED.
 - TANKED WATER HEATER SHOWN AS BASE CONDITION, OPTIONAL TANKLESS WATER HEATER IS AVAILABLE IN LIEU OF TANKED WATER HEATER.

GYPSUM NOTES

AT GARAGE:
GYPSUM BOARD AT COMMON WALLS, CEILINGS, BEAM WRAPS AND SUPPORTS PER STANDARD DETAIL FA-1(b) FIRE ASSEMBLIES OR AS REQUIRED BY LOCAL CODE.

AT STAIRS:
1/2" GYPSUM BOARD AT UNDERSIDE OF STAIRS AND WALLS IN CLOSET

NOTE:
EXTERIOR WALLS DRAIN TO FRAMING WIDTH, EXTERIOR SHEATHING IS NOT INCLUDED IN WALL THICKNESS.

LVL PLY TO PLY FASTENING SCHEDULE: (WHERE APPLICABLE BASED ON LVL USAGE)

- (2) PLY UP TO AND INCLUDING 11 7/8" TALL; FASTEN PLYS w/ (2) ROWS 16D NAILS AT 12" O.C. OR ALT 1 1/2" WIDE LVL FASTEN PLYS w/ (3) ROWS 12D NAILS AT 12" O.C.
- (2) PLY 14" TO AND 18" TALL (INCLUSIVE); FASTEN PLYS w/ (3) ROWS 16D NAILS AT 12" O.C. OR ALT 1 1/2" WIDE LVL FASTEN PLYS w/ (4) ROWS 12D NAILS AT 12" O.C.
- (2) PLY 20" TALL AND OVER; FASTEN PLYS w/ (4) ROWS 16D NAILS AT 12" O.C. OR ALT 1 1/2" WIDE LVL FASTEN PLYS w/ (5) ROWS 12D NAILS AT 12" O.C.
- (3) PLY UP TO AND INCLUDING 11 7/8" TALL; FASTEN PLYS w/ (2) ROWS 16D NAILS AT 12" O.C. FROM EACH SIDE OR ALT 1 1/2" WIDE LVL FASTEN PLYS w/ (3) ROWS 12D NAILS AT 12" O.C. FROM EACH SIDE.
- (3) PLY 14" TO AND 18" TALL (INCLUSIVE); FASTEN PLYS w/ (3) ROWS 16D NAILS AT 12" O.C. FROM EACH SIDE OR ALT 1 1/2" WIDE LVL FASTEN PLYS w/ (4) ROWS 12D NAILS AT 12" O.C. FROM EACH SIDE.
- (3) PLY 20" TALL AND OVER; FASTEN PLYS w/ (4) ROWS 16D NAILS AT 12" O.C. FROM EACH SIDE OR ALT 1 1/2" WIDE LVL FASTEN PLYS w/ (5) ROWS 12D NAILS AT 12" O.C. FROM EACH SIDE.
- (4) PLY (ALL SIZES); FASTEN PLYS w/ (2) ROWS 1/2" DIAMETER A307 BOLTS AT 24" O.C. SEE SHOP DRAWING FOR ADDITIONAL INFORMATION.

FIELD INSTALLED FIRST FLOOR BEAM/HEADER SCHEDULE

IDENTIFIER	DESCRIPTION	LENGTH	OPTIONS	ENS. NUM.	REMARKS
BI01	BEAM STEEL - W12X30	23'-10 3/4"		1023	
PF101-2	LVL 1.75 - 11-04	20'-1"	GCB/ GCF	1035	

STEEL COLUMN SCHEDULE

IDENTIFIER	STYLE	HEIGHT	OPTIONS	ENS. NUM.	REMARKS
CI01	STANCHION - 3 IN SCHED 40	9'-6"	GCB/ GCF, ELA/ ELB/ ELK/ ELL, SXG, FBA/ FCA	1006	

FIRST FLOOR JACK SCHEDULE

IDENTIFIER	DESCRIPTION	OPTIONS	ENS. NUM.	REMARKS
JI04	JACK - (5) 2x6 SPF STUD GRADE	SXG, ELB/ ELL	1006	
JI06	JACK - (4) 2x4 SPF STUD GRADE		1014	
JI09	JACK - (4) 2x6 SPF STUD GRADE		1016	
JI10	JACK - (4) 2x4 SPF STUD GRADE		1016	
JI11	JACK - (2) 2x4 SPF STUD GRADE		1018	
JI12	JACK - (2) 2x4 SPF STUD GRADE		1020	
JI17	JACK - (5) 2x4 SPF#1		1023	
JI18	JACK - (3) 2x4 SPF STUD GRADE		1021	
JI21	JACK - (2) 2x4 SPF STUD GRADE	GCB/ GCF	1035	
JI22	JACK - (2) 2x4 SPF STUD GRADE	GCB/ GCF	1035	
JI31	JACK - (2) 2x4 SPF STUD GRADE		1053	
JI32	JACK - (2) 2x4 SPF STUD GRADE		1053	
JI33	JACK - (3) 2x4 SPF STUD GRADE		1055	
JI35	JACK - (2) 2x4 SPF STUD GRADE		1063	
JI38	JACK - (3) 2x4 SPF#1	ELB/ ELL	2010	
JI39	JACK - (3) 2x6 SPF STUD GRADE	ELB/ ELL	2010	
JI44	JACK - (2) 2x4 SPF STUD GRADE		1018	
JI45	JACK - (3) 2x4 SPF STUD GRADE		1021	
JI47	JACK - (5) 2x4 SPF#1		1023	

REMARKS

REV. NO. DATE

1 1/4/19 DRA - ADDED GENERAL NOTE FOR EXTERIOR WALLS

2 05/20/19 SLS - PAR #51650

© NVR, Inc. reserves the right to modify or change the information contained in these plans without notice. These plans are not to be reproduced, changed or altered in any way without the written consent of NVR, Inc.

NVR
NVR, Inc. Suite 100
Friedrich, MD 21703
5285 Washburne Rd
Friedrich, MD 21703

SET NO. CLM00
VERSION 01
DRAWN BY: ARY
DATE:
OPTION

MODEL: COLUMBIA
DRAWING TITLE: FIRST FLOOR PLAN
OPTION DESCRIPTION

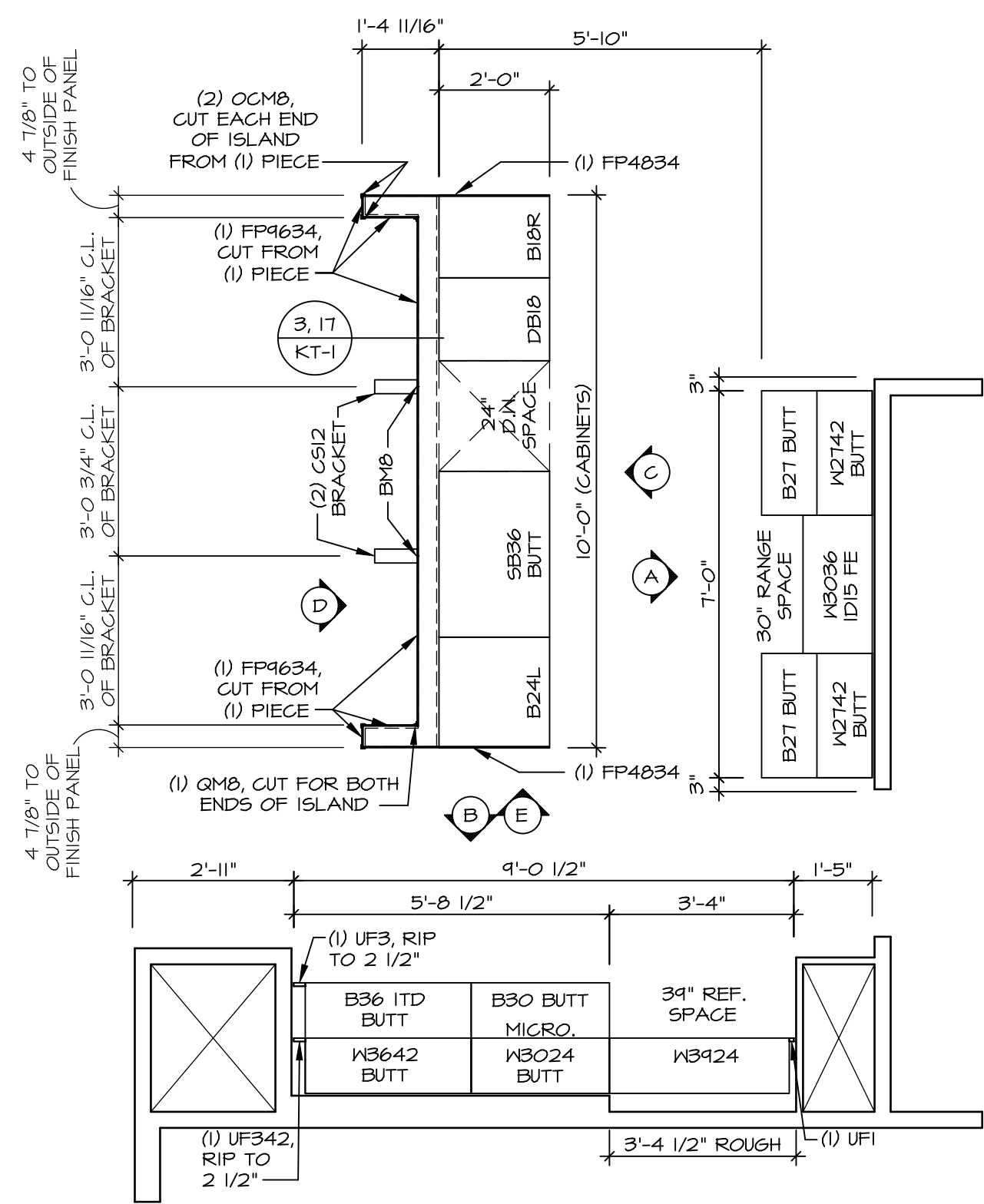
SHEET NO. **A-7**

27

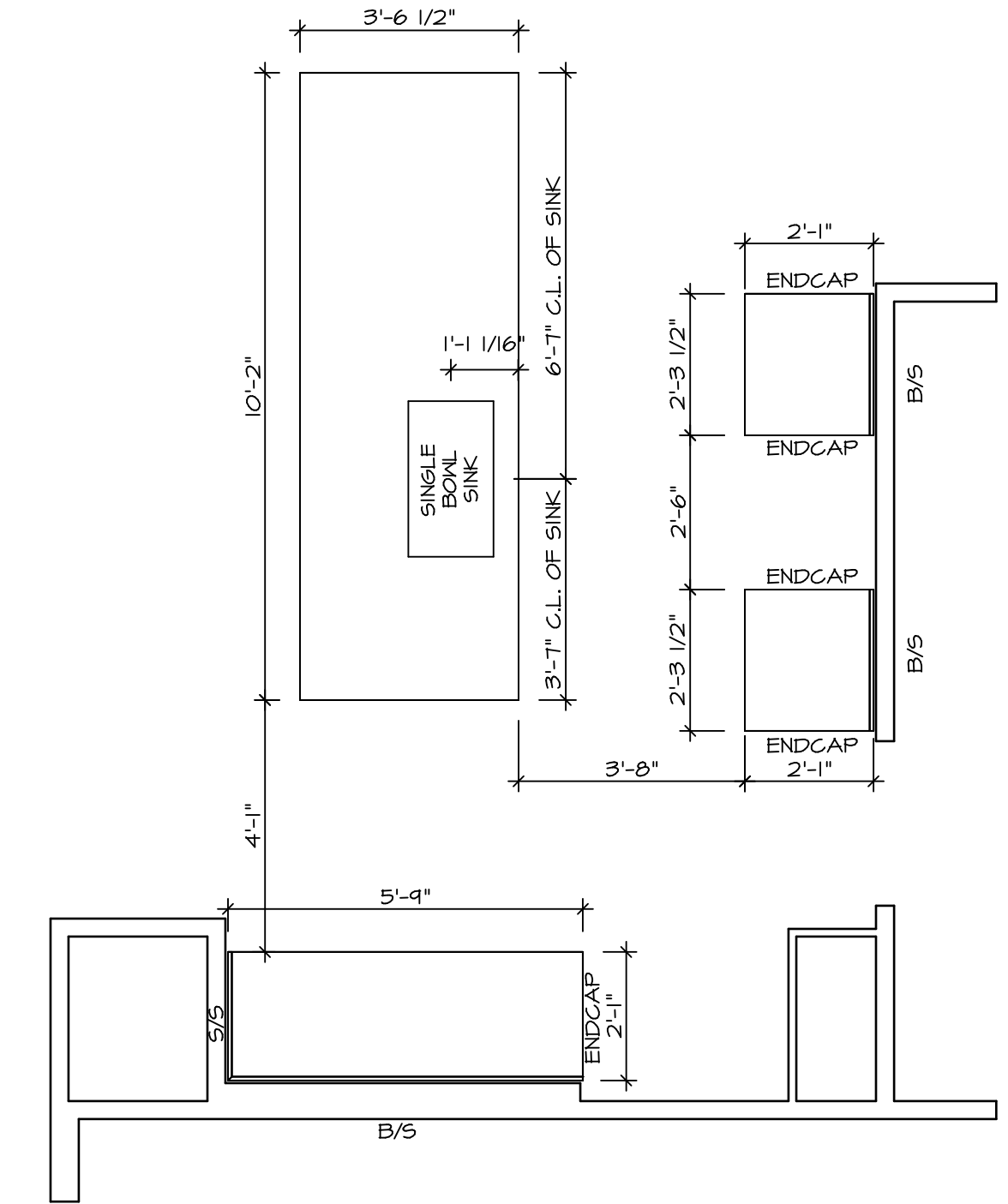
C:\NVR\Solves\COLUMBIA_CLM00_01\DCY-CH-X47\1307750\Sheets\Lot_Specific\27_A-7_Plan_LS.dwg 07/14/19 - 7:14 PM

NOTE:
CABINET LAYOUT(S) ARE
BASED ON FINISHED
DIMENSION TO DRYWALL.

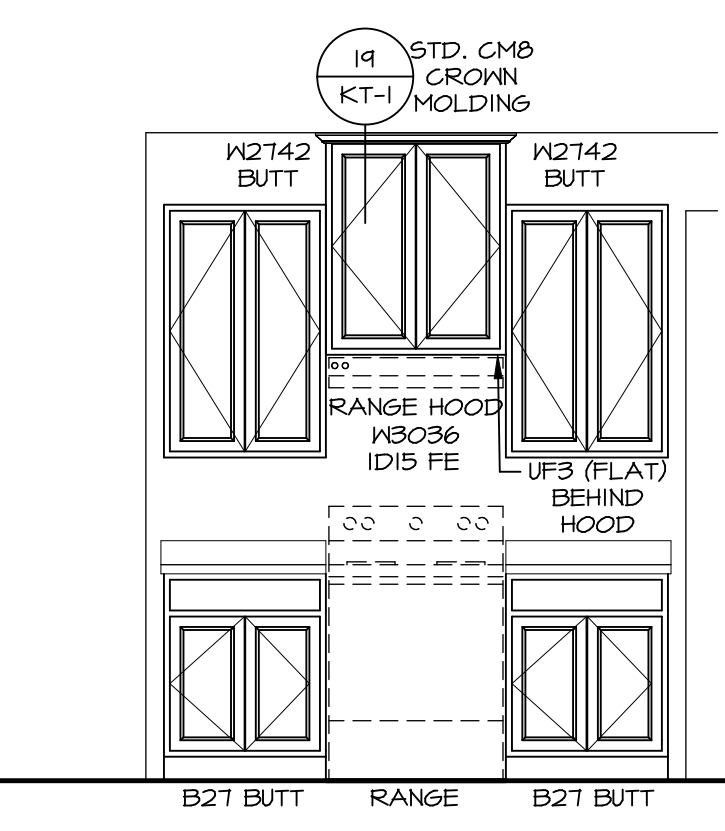
NOTE:
KITCHEN ELEVATIONS/PLANS CALL
OUT STANDARD MOLDING. REFER TO
DETAIL 11/CT-1 FOR REPLACEMENT
BASED ON CABINET STYLE.



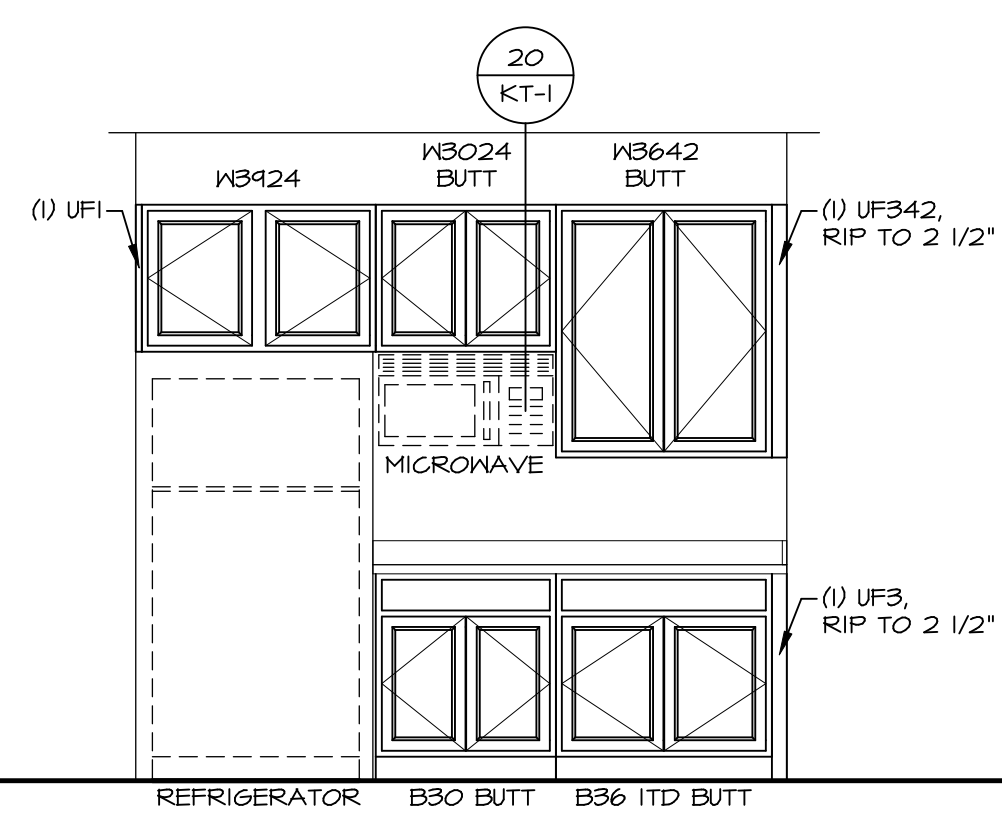
1 KITCHEN CABINET LAYOUT KC-3521
SCALE: 3/8" = 1'-0" APPLIANCE LAYOUT W/ RANGE "KAA"



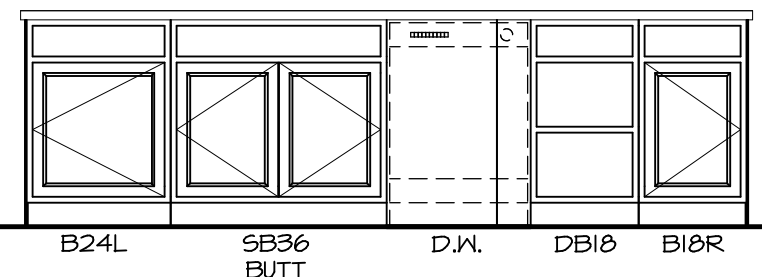
2 KITCHEN COUNTERTOP LAYOUT KC-3521
SCALE: 3/8" = 1'-0" APPLIANCE LAYOUT W/ RANGE "KAA"



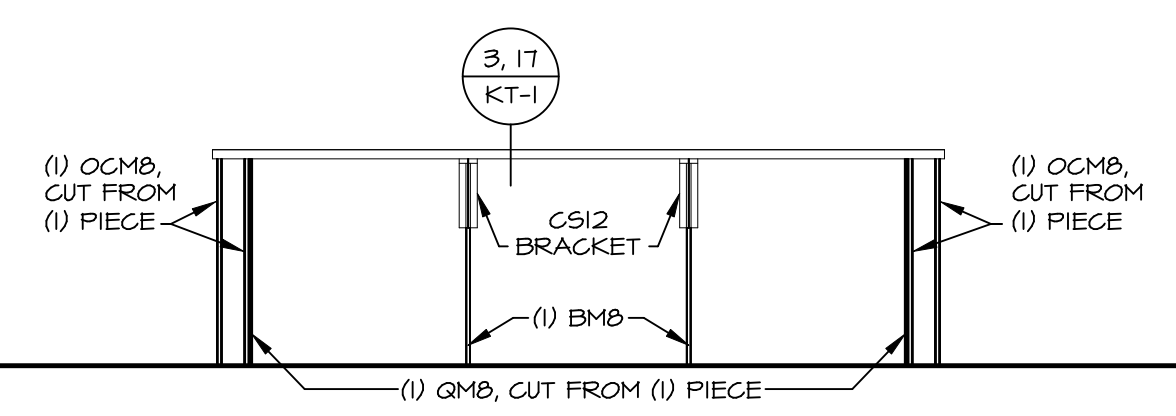
A CABINET ELEVATION
SCALE: 3/8" = 1'-0"



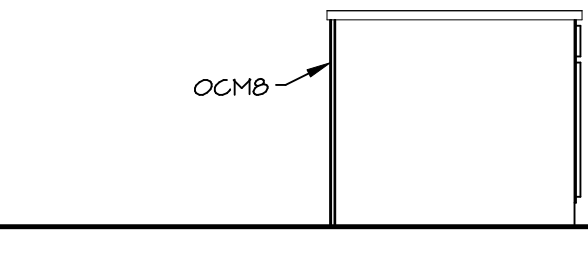
B CABINET ELEVATION
SCALE: 3/8" = 1'-0"



C CABINET ELEVATION
SCALE: 3/8" = 1'-0"



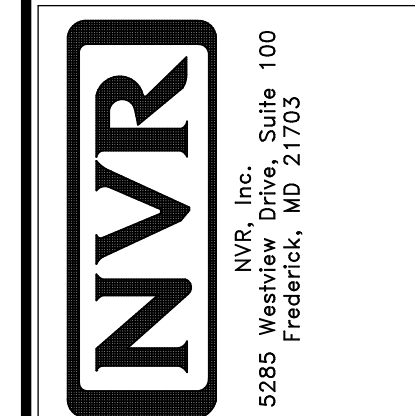
D CABINET ELEVATION
SCALE: 3/8" = 1'-0"



E CABINET ELEVATION
SCALE: 3/8" = 1'-0"

REV. NO.	DATE	REMARKS

© NVR, Inc. expressly reserves the right to modify these plans without notice. These plans are not to be reproduced, changed or altered in any way without the written consent of NVR, Inc.



MODEL	COLUMBIA
DRAWING TITLE	KITCHEN PLAN AND ELEVATION
OPTION DESCRIPTION	
SHEET NO.	A-12
	44

