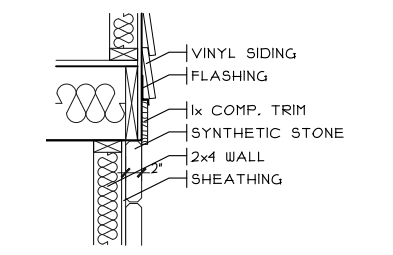
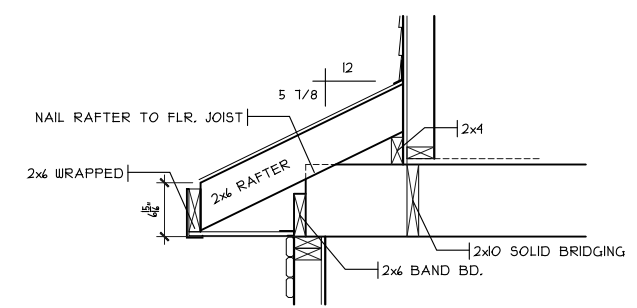


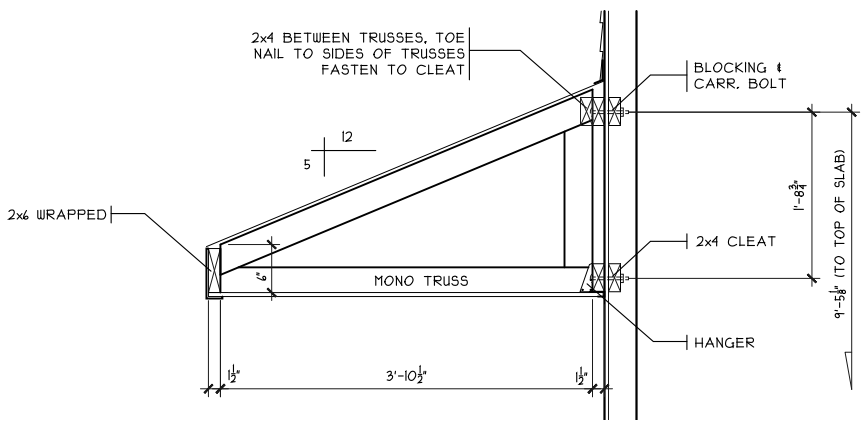
STONE/VINYL CORNER
SCALE: 1/2" = 1'-0"



STONE DETAIL
SCALE: 1/2" = 1'-0"



GARAGE DETAIL
SCALE: 1/2" = 1'-0"



PORCH DETAIL
SCALE: 1/2" = 1'-0" ELEVATION A



REAR ELEVATION
SCALE: 1/8" = 1'-0"

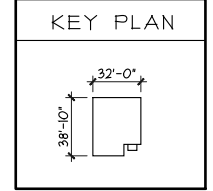


FRONT ELEVATION
SCALE: 1/8" = 1'-0" ELEVATION A6

SHEET INDEX	
SHT#	DESCRIPTION
A1	Front and Rear Elevations
A1a	Left and Right Elevations
A2	Foundation Plan
A3	First Floor Plan
A4	Second Floor Plan
A5	Typical Wall Sections/Stair Section
A6	Typical Framing Details (Aluminum)
G1	General Notes
E1	Electrical Plan
S1	Second Floor Joist Layout / Roof Plan

NOTE:
PLANS PRINTED ON 24x36 SHEETS TO BE SCALABLE AT FULL SCALE. 1/4" = 1'-0"
PLANS PRINTED ON 11x17 SHEETS TO BE SCALABLE AT HALF SCALE. 1/8" = 1'-0"

2S1889B4 PLAN INFO	
4	BDRMS
2.5	BATHS
2	CAR GARAGE
8'	1ST FLR. CLG.
SQUARE FOOTAGE	
TOTAL	1889
MAIN	139
UPPER (SLAB)	150
LOWER (SLAB)	662
GARAGE (SLAB)	380



OPTIONS

Issue Dates
Review #1 6.12.2019

Tyndale Slab - Vinyl
Cristo Homes reserves all property rights in these plans. These plans are not to be reproduced, changed, or copied in any manner. They are not to be given to a third party, either in full or in part, without first receiving written permission from Cristo Homes. In the event these plans are used by a third party, Cristo Homes shall be held harmless.

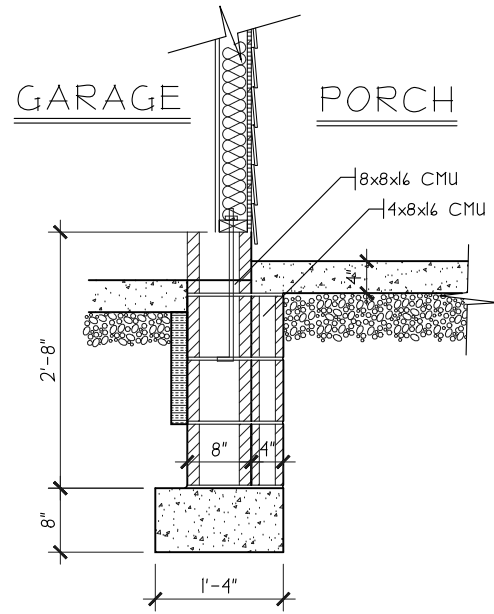
Trenton
Butler County

CR-4670
Proposed Residence:
Market Homes
306 Governors Ave.
Centennial Run

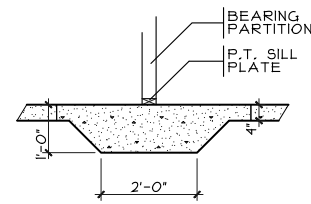
CRISTO HOMES
7594-A Tylers Place Blvd.
West Chester, OH 45069
513.735.0570 www.cristohomes.com

Elevation A6
Plan: Tyndale Slab
Date : 5.21.2019
Drawn: EW
Scale : As Noted
Revised: 6.12.2019
Sheet : 1 of 11

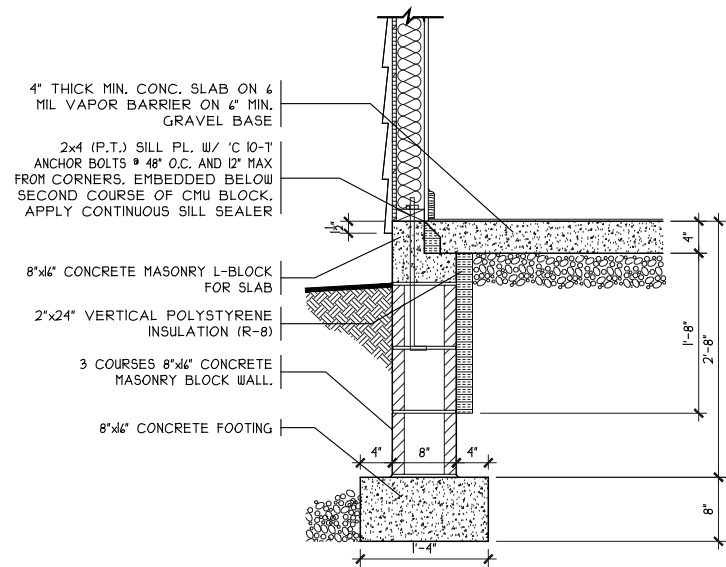
A1



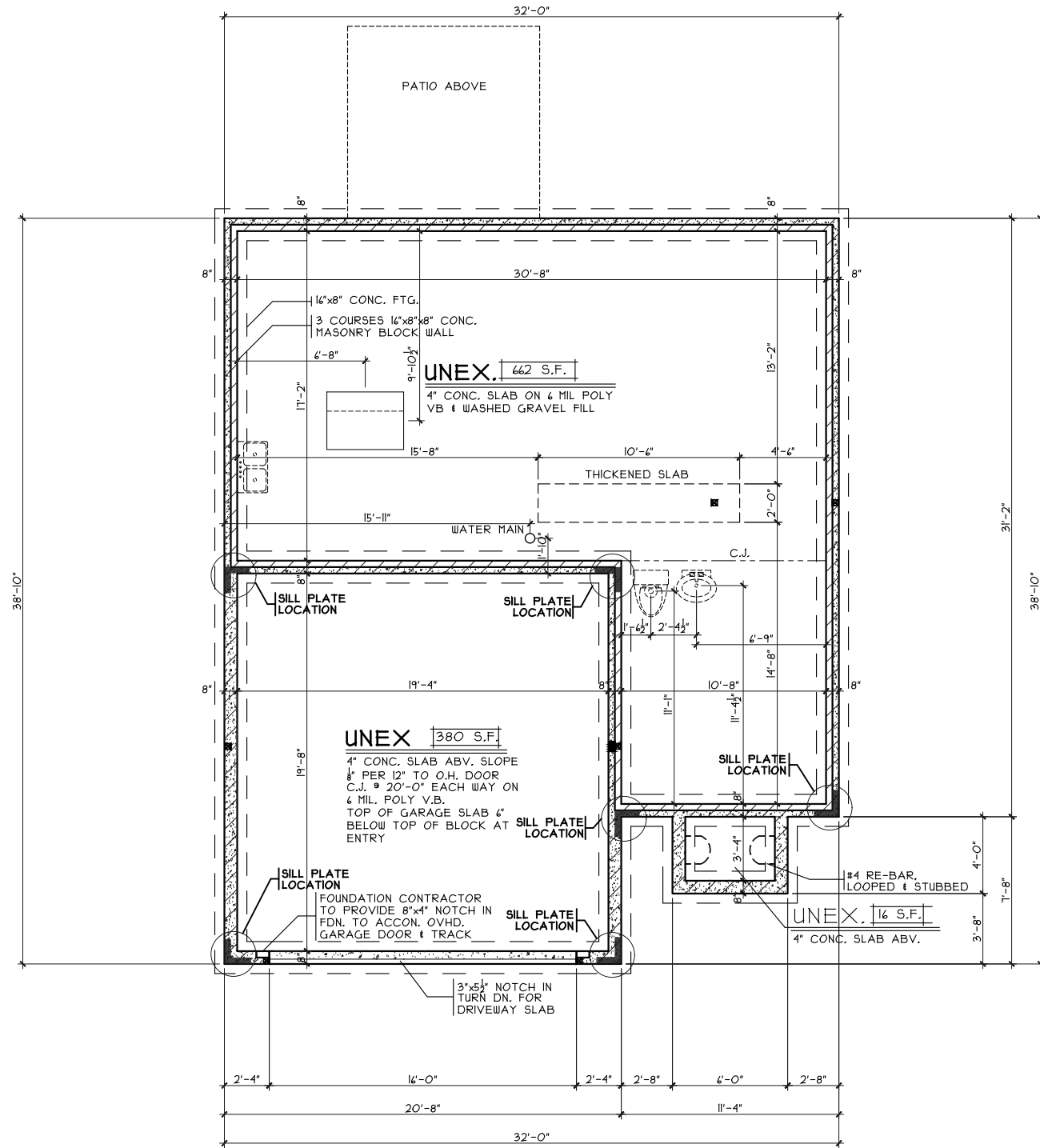
BLK. DETAIL
SCALE: 1" = 1'-0"



THICKENED SLAB
SCALE: 1/4" = 1'-0"



SOG DETAIL
SCALE: 1/8" = 1'-0"



FOUNDATION PLAN
SCALE: 1/8" = 1'-0"

OPTIONS

Foundation Plan

Plan: Tyndale Slab
Date: 5.21.2019
Drawn: EW
Scale: As Noted
Revised: 6.12.2019
Sheet: 3 of 11

CR-4670

Proposed Residence:

Market Homes
306 Governors Ave.
Centennial Run

Tyndale Slab - A6 - Vinyl

Cristo Homes reserves all property rights in these plans. These plans are not to be reproduced, changed, or copied in any manner. They are not to be given to a third party, either in full or in part, without first receiving written permission from Cristo Homes. In the event these plans are used by a third party, Cristo Homes shall be held harmless.

Issue Dates

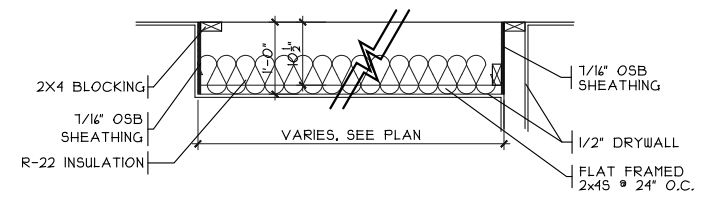
Review #1	6.12.2019

Trenton
Butler County

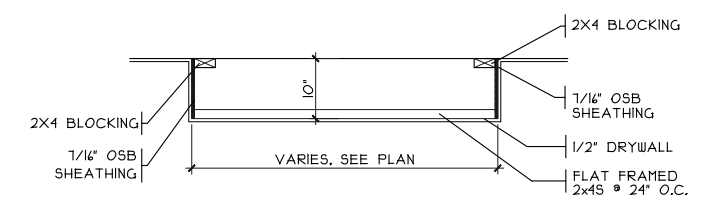


7594-A Tylers Place Blvd.
West Chester, OH 45069
513.755.0570 www.cristohomes.com

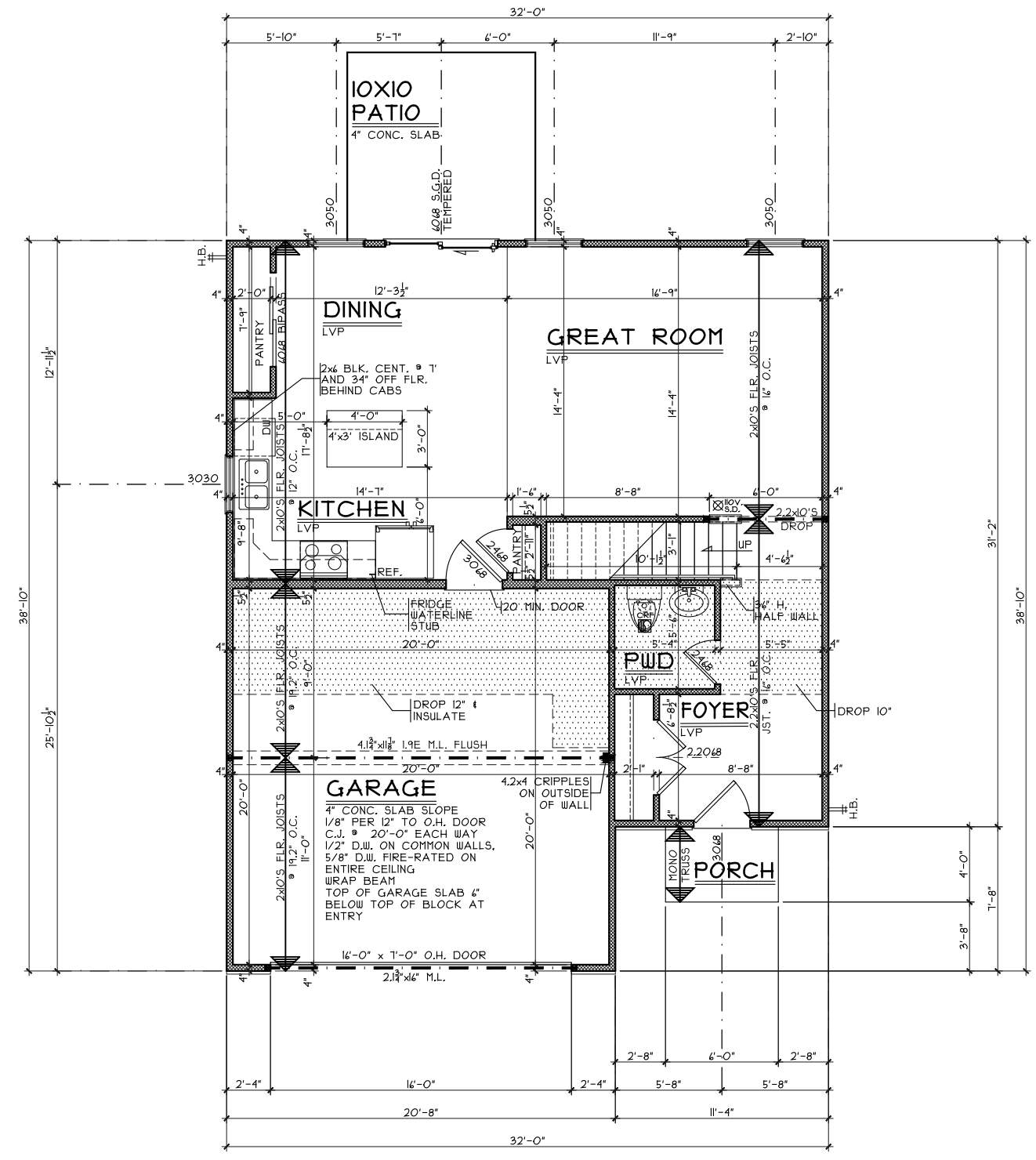
A2



DROP CLG. DETAIL
SCALE: 1/8" = 1'-0"
GARAGE



DROP CLG. DETAIL
SCALE: 1/8" = 1'-0"



FIRST FLOOR PLAN
SCALE: 1/8" = 1'-0" 139 S.F.

OPTIONS

First Floor Plan
Plan: Tyndale Slab
Date: 5.21.2019
Drawn: EW
Scale: As Noted
Revised: 6.12.2019
Sheet: 4 of 11

CR-4670
Proposed Residence:
Market Homes
306 Governors Ave.
Centennial Run

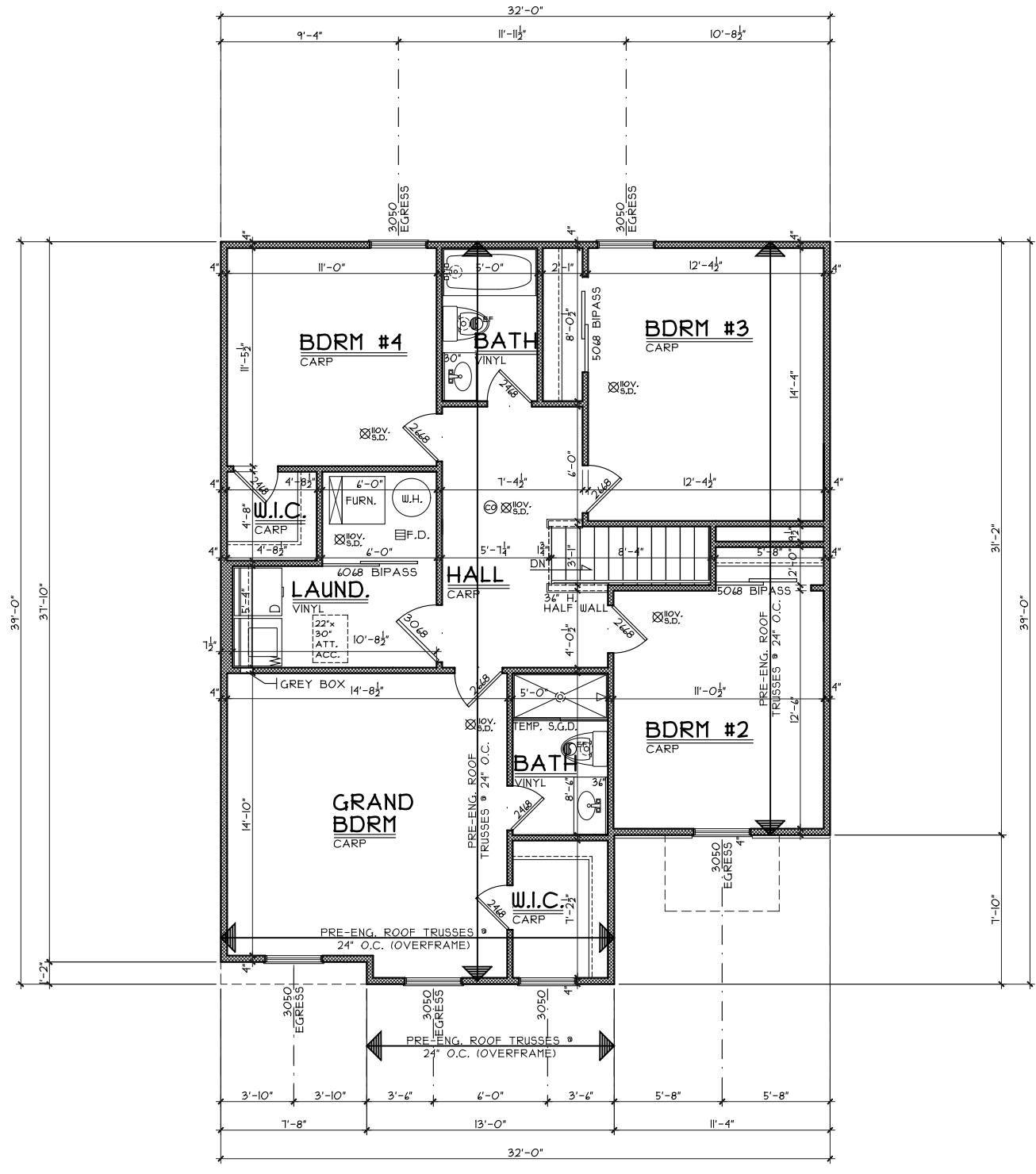
Tyndale Slab - A6 - Vinyl
Trenton
Butler County

Issue Dates

Review #1	6.12.2019

Cristo Homes reserves all property rights in these plans. These plans are not to be reproduced, changed, or copied in any manner. They are not to be given to a third party, either in full or in part, without first receiving written permission from Cristo Homes. In the event these plans are used by a third party, Cristo Homes shall be held harmless.

A3



SECOND FLOOR PLAN
SCALE: 1/8" = 1'-0" 1150 S.F.

OPTIONS

Second Floor Plan

Plan: Tyndale Slab
Date : 5.21.2019
Drawn: EW
Scale : As Noted
Revised: 6.12.2019
Sheet : 6 of 11



7594-A Tylers Place Blvd.
West Chester, OH 45069
513.755.0570 www.cristohomes.com

CR-4670

Proposed Residence:
Market Homes
306 Governors Ave.
Centennial Run

Trenton
Butler County

Tyndale Slab - A6 - Vinyl

Cristo Homes reserves all property rights in these plans. These plans are not to be reproduced, changed, or copied in any manner. They are not to be given to a third party, either in full or in part, without first receiving written permission from Cristo Homes. In the event these plans are used by a third party, Cristo Homes shall be held harmless.

Issue Dates

Review #1	6.12.2019

A4