

**1**  
A-6  
**BASEMENT FLOOR PLAN**  
SCALE: 1/4" = 1'-0"

LEGEND	
	BEARING WALL
	NON BEARING WALL
	INDICATES BEARING FROM POINT-LOAD ABOVE JACKS
	JACKS
	BEAM/HEADER
	PAD FOOTING
	STEEL COLUMN
	PORTAL FRAME
	JOIST/TRUSS
	LVL
	ENGINEERING PAGE NUMBER

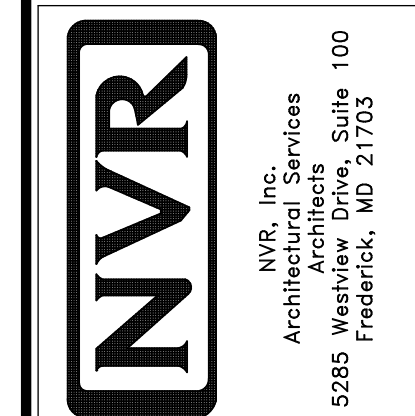
SEE FC DETAILS FOR FRAMING CONNECTORS

- FLOOR PLAN NOTES**
- ALL HEADERS ARE (2) 2x6 w/ 2x4 WALLS OR (3) 2x6 w/ 2x6 WALLS, UNLESS OTHERWISE NOTED.
  - ALL HEADERS TO HAVE (1) 2x4 OR 2x6 JACK EACH END, UNLESS OTHERWISE NOTED.
  - ALL EXTERIOR WALLS TO BE 4" AND ALL INTERIOR WALLS TO BE 3 1/2", UNLESS OTHERWISE NOTED.
  - HATCHED AREAS INDICATE DROPPED CEILING. ALL DROPPED CEILING ARE 12" UNLESS OTHERWISE NOTED.
  - SEE 'BRACED WALL PANEL DETAIL SHEET' FOR SPECIAL WALL FRAMING LOCATIONS AND HEADER SIZES, IF APPLICABLE.
  - SEE STANDARD DETAIL CATEGORY 'IT' SHEET(S) FOR INTERIOR TRIM DETAILS.
  - SEE ARCHITECTURAL DETAIL SHEET 'AD' FOR HOUSE SPECIFIC INTERIOR TRIM OPTION TABLE.
  - ALL WINDOWS HAVE T-O 1/2" HEADER HEIGHT UNLESS OTHERWISE NOTED.

- GYPSUM NOTES**
- AT GARAGE:  
GYPSUM BOARD AT COMMON WALLS, CEILING, BEAM WRAPS AND SUPPORTS PER STANDARD DETAIL FA-1(b) FIRE ASSEMBLIES OR AS REQUIRED BY LOCAL CODE.
- AT STAIRS:  
1/2" GYPSUM BOARD AT UNDERSIDE OF STAIRS AND WALLS IN CLOSET

SHEET NO.	MODEL	SET NO.	VERSION	DRAWING TITLE	OPTION DESCRIPTION	DATE	OPTION	REVISIONS	REMARKS
A-6	NAPLES	NAPOO	06	BASEMENT FLOOR PLAN		05/22/15			
31									

NVR, Inc., owner, expressly reserves its copyright in these plans. These plans are not to be reproduced, changed, copied, or otherwise used in any way without the prior written consent of NVR, Inc.



SET NO. NAPOO  
VERSION 06  
DRAWN BY TN  
DATE: 05/22/15  
OPTION

C:\NVR\Solves\NAPLES\_NAPOO\_06\DCY-CY-4175\884543\Sheet\Lot\_Specific\31\_A-6\_BSMT\_LS.dwg 08/01/18 - 2:57 am

**LEGEND**

- BEARING WALL
- NON BEARING WALL
- INDICATES BEARING FROM POINT-LOAD ABOVE
- JACKS
- BEAM/HEADER
- PAD FOOTINGS
- STEEL COLUMN
- PORTAL FRAME
- JOIST/TRUSS
- LVL
- ENGINEERING PAGE NUMBER

SEE FG DETAILS FOR FRAMING CONNECTORS

- FLOOR PLAN NOTES**
- ALL HEADERS ARE (2) 2x6 w/ 2x4 WALLS OR (3) 2x6 w/ 2x6 WALLS, UNLESS OTHERWISE NOTED.
  - ALL HEADERS TO HAVE (1) 2x4 OR 2x6 JACK AND KING STUD EACH END, UNLESS OTHERWISE NOTED.
  - ALL EXTERIOR WALLS TO BE 4" w/ OSB OR 3 1/2" w/ T-PLY, ALL INTERIOR WALLS TO BE 3 1/2", UNLESS OTHERWISE NOTED.
  - HATCHED AREAS INDICATE DROPPED CEILING. ALL DROPPED CEILING ARE 12" UNLESS OTHERWISE NOTED.
  - SEE "BRACED WALL PANEL DETAIL SHEET" FOR SPECIAL WALL FRAMING LOCATIONS AND HEADER SIZES, IF APPLICABLE.
  - SEE STANDARD DETAIL CATEGORY "IT" SHEET(S) FOR INTERIOR TRIM DETAILS.
  - SEE ARCHITECTURAL DETAIL SHEET "AD" FOR HOUSE SPECIFIC INTERIOR TRIM OPTION TABLE.
  - ALL WINDOWS HAVE 7'-0 1/2" HEADER HEIGHT UNLESS OTHERWISE NOTED.
  - ALL HEADERS IN NON-BEARING WALLS SHALL BE A SINGLE FLAT 2x4 OR 2x6 ATTACHED TO GRIFFLES ABOVE, UNLESS OTHERWISE NOTED.

- GYPSUM NOTES**
- AT GARAGE:  
GYPSUM BOARD AT COMMON WALLS, CEILING, BEAM WRAPS AND SUPPORTS PER STANDARD DETAIL FA-(b) FIRE ASSEMBLIES OR AS REQUIRED BY LOCAL CODE.
- AT STAIRS:  
1/2" GYPSUM BOARD AT UNDERSIDE OF STAIRS AND WALLS IN CLOSET

**LVL PLY TO PLY FASTENING SCHEDULE:**

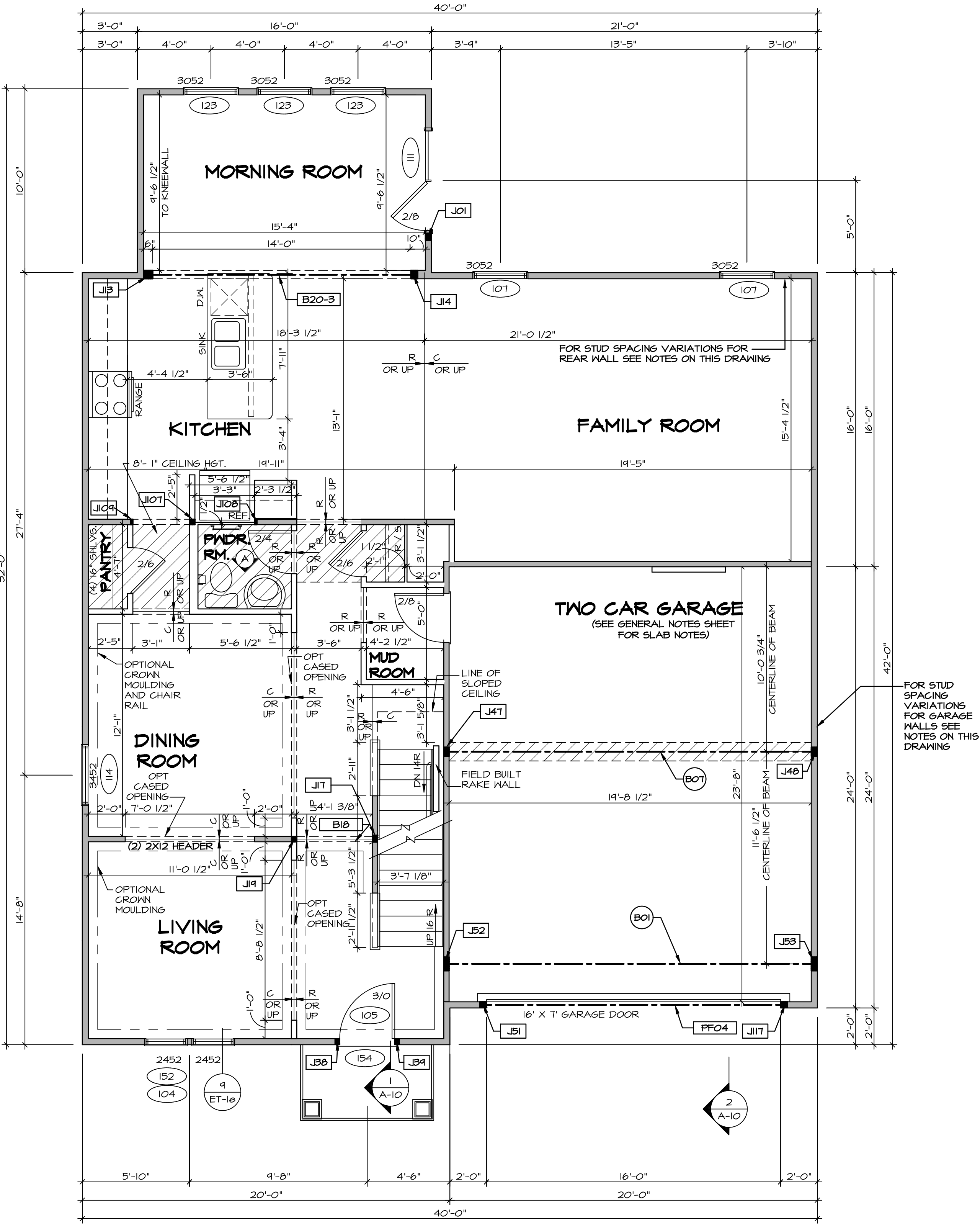
- (2) PLY UP TO AND INCLUDING 11 7/8" TALL; FASTEN PLYS W/ (2) ROWS 16D NAILS AT 12" O.C.
- (2) PLY 14" TO AND 18" TALL (INCLUSIVE); FASTEN PLYS W/ (3) ROWS 16D NAILS AT 12" O.C.
- (2) PLY 20" TALL AND OVER; FASTEN PLYS W/ (4) ROWS 16D NAILS AT 12" O.C.
- (3) PLY UP TO AND INCLUDING 11 7/8" TALL; FASTEN PLYS W/ (2) ROWS 16D NAILS AT 12" O.C. FROM EACH SIDE
- (3) PLY 14" TO AND 18" TALL (INCLUSIVE); FASTEN PLYS W/ (3) ROWS 16D NAILS AT 12" O.C. FROM EACH SIDE
- (3) PLY 20" TALL AND OVER; FASTEN PLYS W/ (4) ROWS 16D NAILS AT 12" O.C. FROM EACH SIDE

**FIRST FLOOR BEAM/HEADER SCHEDULE**

IDENTIFIER	DESCRIPTION	LENGTH	OPTIONS	ENG. NUM.	REMARKS
B01	BEAM STEEL - W12X30	20'-3"	ZCC, ZSX, ELB, ELC, ELL, ELN, GCB	143	
B07	BEAM STEEL - W12X14	20'-3"	GCB	103	
B18	INT HEADER - 2X8 - 2 PLY	4'-7 1/2"		100	FIELD INSTALLED
B20-3	LVL - 16	14'-11"	MAA, ZCC	124	5.A
PF04	EXT HEADER - 2X12 - 2 PLY	14'-4"	GCB, ELB, ELC, ELL, ELN	120	PORTAL FRAME

**FIRST FLOOR JACK SCHEDULE**

IDENTIFIER	DESCRIPTION	OPTIONS	ENG. NUM.	REMARKS
J01	JACK - (3) 2X4 SPF STUD GRADE	SRM, SQK	112	FULL HEIGHT STUDS
J107	JACK - (2) 2X4 SPF STUD GRADE	ZCC	167	
J108	JACK - 2x4 SPF STUD GRADE		150, 167	
J109	JACK - 2x4 SPF STUD GRADE		150, 167	
J117	JACK - (3) 2X4 SPF STUD GRADE	GCB	120	
J13	JACK - (4) 2x6 SPF STUD GRADE	ZCC, MAA	124	
J14	JACK - (3) 2x6 SPF STUD GRADE	ZCC, MAA	124	
J17	JACK - (3) 2X4 SPF STUD GRADE	ZCC, FBA		
J14	JACK - (2) 2X4 SPF STUD GRADE	MBL		
J58	JACK - (2) 2X4 SPF STUD GRADE	ELL	105	
J94	JACK - (2) 2X4 SPF STUD GRADE	ELL	105	
J47	JACK - (4) 2X4 SPF STUD GRADE	GCB		
J48	JACK - (4) 2X4 SPF STUD GRADE	GCB		
J51	JACK - (3) 2X4 SPF STUD GRADE	GCB	120	
J52	JACK - (6) 2X4 SPFH	GCB, ELB, ELC, ELL, ELN	119	
J53	JACK - (6) 2X4 SPFH	SRM, SQK, SRI, SXS, GCB	142, 143	



**FIRST FLOOR PLAN**  
SCALE: 1/4" = 1'-0"

**STEEL COLUMN SCHEDULE**

IDENTIFIER	STYLE	HEIGHT	OPTIONS	ENG. NUM.	REMARKS

- STUD SPACING FOR FRONT WALLS AT LIVING ROOM:**  
W/O ATTIC "BTU"/MAU": 2x4 STUD WALLS AT 16" O.C. (115)  
OR  
W/ ATTIC "BTU"/MAU": 2x4 STUD WALLS AT 12" O.C. (157)
- STUD SPACING FOR FRONT WALLS AT FOYER:**  
2x4 STUD WALLS AT 12" O.C. (116)  
(157)
- STUD SPACING FOR FRONT / SIDE WALLS AT GARAGE:**  
W/ 40 MPH "SRM" OR 100 MPH "SQK": 2x4 STUD WALLS AT 16" O.C. (125)  
OR  
W/ 110 MPH "SQL" OR 120 MPH "SRX": 2x4 STUD WALLS AT 12" O.C. (125)
- STUD SPACING FOR REAR WALLS AT DINETTE/ KITCHEN:**  
W/ CORPORATE TRUSS SPECS. "SRI" OR SOUTHEAST SPECS. "SXS" WITHOUT ATTIC: 2x4 STUD WALLS AT 16" O.C. (117)  
OR  
W/ NORTHEAST TRUSS SPECS. "SRJ" WITHOUT ATTIC: 2x4 STUD WALLS AT 12" O.C. (117)  
OR  
W/ ATTIC "BTU"/MAU": 2x4 STUD WALLS AT 12" O.C. (158)
- STUD SPACING FOR REAR WALLS AT FAMILY ROOM:**  
W/O ATTIC "BTU"/MAU": 2x4 STUD WALLS AT 16" O.C. (117)  
OR  
W/ ATTIC "BTU"/MAU": 2x4 STUD WALLS AT 12" O.C. (158)

REV. NO. DATE DESCRIPTION

1 08/01/16 N.E. - DRAWING ALIGNMENT

2 07/12/17 SLS - T-PLY CONVERSION PROJECT

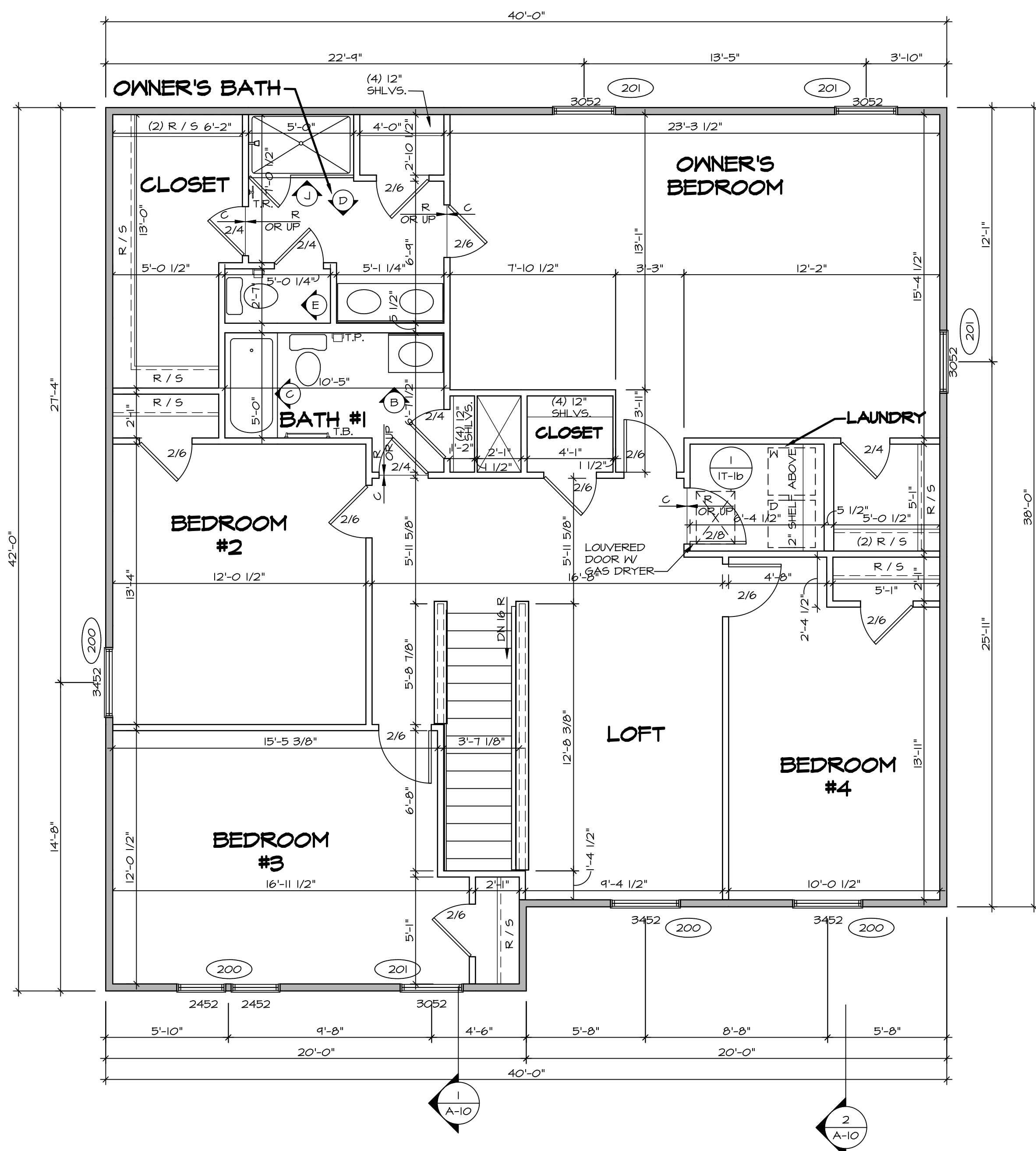
MODEL: NAPLES  
DRAWING TITLE: FIRST FLOOR PLAN  
OPTION DESCRIPTION: A-7

SHEET NO. A-7

32

NVR, Inc. Architectural Services  
5285 Westchase Lane, Suite 100  
Frederick, MD 21703

08/01/18 - 2:57 am



**LEGEND**

- BEARING WALL
- NON BEARING WALL
- INDICATES BEARING FROM POINT-LOAD ABOVE
- JACKS
- BEAM/HEADER
- PAD FOOTING
- STEEL COLUMN
- PORTAL FRAME
- JOIST/TRUSS
- LVL
- ENGINEERING PAGE NUMBER

SEE FC DETAILS FOR FRAMING CONNECTORS

- FLOOR PLAN NOTES**
- ALL HEADERS ARE (2) 2x6 w/ 2x4 WALLS OR (3) 2x6 w/ 2x6 WALLS, UNLESS OTHERWISE NOTED.
  - ALL HEADERS TO HAVE (1) 2x4 OR 2x6 JACK AND KING STUD EACH END, UNLESS OTHERWISE NOTED.
  - ALL EXTERIOR WALLS TO BE 4" w/ OSB OR 3 1/2" w/ T-PLY, ALL INTERIOR WALLS TO BE 3 1/2", UNLESS OTHERWISE NOTED.
  - HATCHED AREAS INDICATE DROPPED CEILINGS. ALL DROPPED CEILINGS ARE 12" UNLESS OTHERWISE NOTED.
  - SEE "BRACED WALL PANEL DETAIL SHEET" FOR SPECIAL WALL FRAMING LOCATIONS AND HEADER SIZES, IF APPLICABLE.
  - SEE STANDARD DETAIL CATEGORY "11" SHEET(S) FOR INTERIOR TRIM DETAILS.
  - SEE ARCHITECTURAL DETAIL SHEET "AD" FOR HOUSE SPECIFIC INTERIOR TRIM OPTION TABLE.
  - ALL WINDOWS HAVE 7'-0 1/2" HEADER HEIGHT UNLESS OTHERWISE NOTED.
  - ALL HEADERS IN NON-BEARING WALLS SHALL BE A SINGLE FLAT 2x4 OR 2x6 ATTACHED TO CRIPPLES ABOVE, UNLESS OTHERWISE NOTED.

**SECOND FLOOR JACK SCHEDULE**

IDENTIFIER	DESCRIPTION	OPTIONS	ENG. NUM.	REMARKS

- LVL PLY TO PLY FASTENING SCHEDULE:**
- 1A - (2) PLY UP TO AND INCLUDING 11 7/8" TALL; FASTEN PLYS W/ (2) ROWS 16D NAILS AT 12" O.C.
  - 2A - (2) PLY 14" TO AND 18" TALL (INCLUSIVE); FASTEN PLYS W/ (3) ROWS 16D NAILS AT 12" O.C.
  - 3A - (2) PLY 20" TALL AND OVER; FASTEN PLYS W/ (4) ROWS 16D NAILS AT 12" O.C.
  - 4A - (3) PLY UP TO AND INCLUDING 11 7/8" TALL; FASTEN PLYS W/ (2) ROWS 16D NAILS AT 12" O.C. FROM EACH SIDE
  - 5A - (3) PLY 14" TO AND 18" TALL (INCLUSIVE); FASTEN PLYS W/ (3) ROWS 16D NAILS AT 12" O.C. FROM EACH SIDE
  - 6A - (3) PLY 20" TALL AND OVER; FASTEN PLYS W/ (4) ROWS 16D NAILS AT 12" O.C. FROM EACH SIDE

**SECOND FLOOR BEAM/HEADER SCHEDULE**

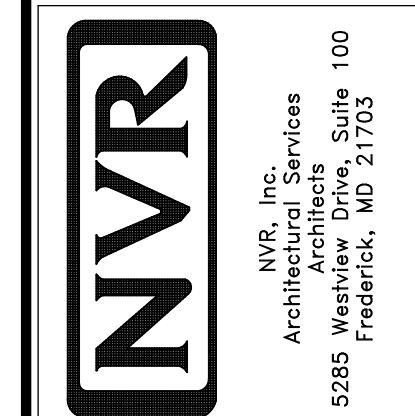
IDENTIFIER	DESCRIPTION	LENGTH	OPTIONS	ENG. NUM.	REMARKS

**SECOND FLOOR PLAN**  
SCALE: 1/4" = 1'-0"

REMARKS

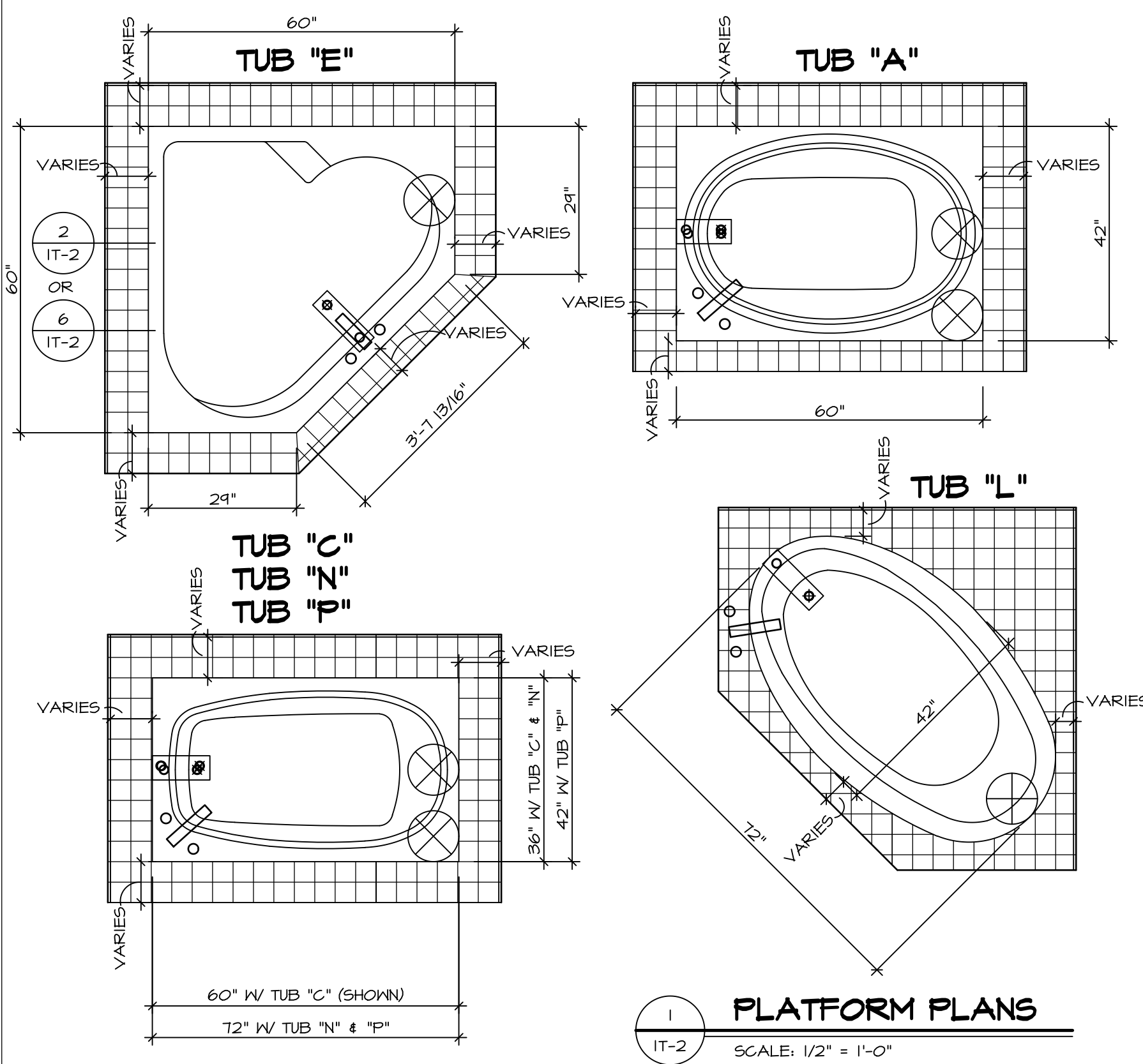
REV. NO.	DATE	DESCRIPTION
1	08/01/16	N.L. - DRAWING ALIGNMENT
2	07/12/17	SLS - T-PLY CONVERSION PROJECT

NVR, Inc., owner, expressly reserves its copyright in these plans. These plans are not to be reproduced, changed, copied, or otherwise used in any way without the written consent of NVR, Inc.



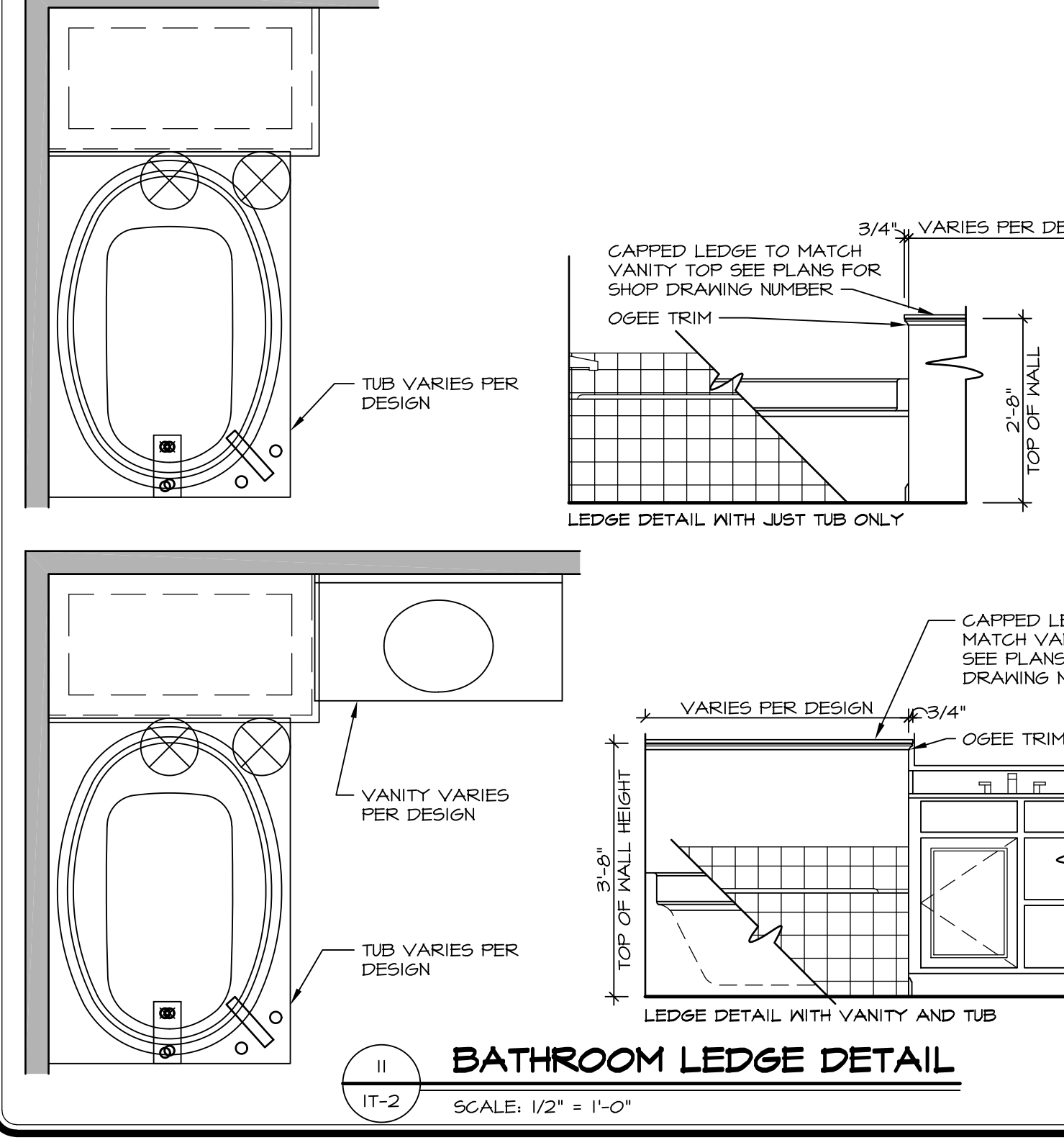
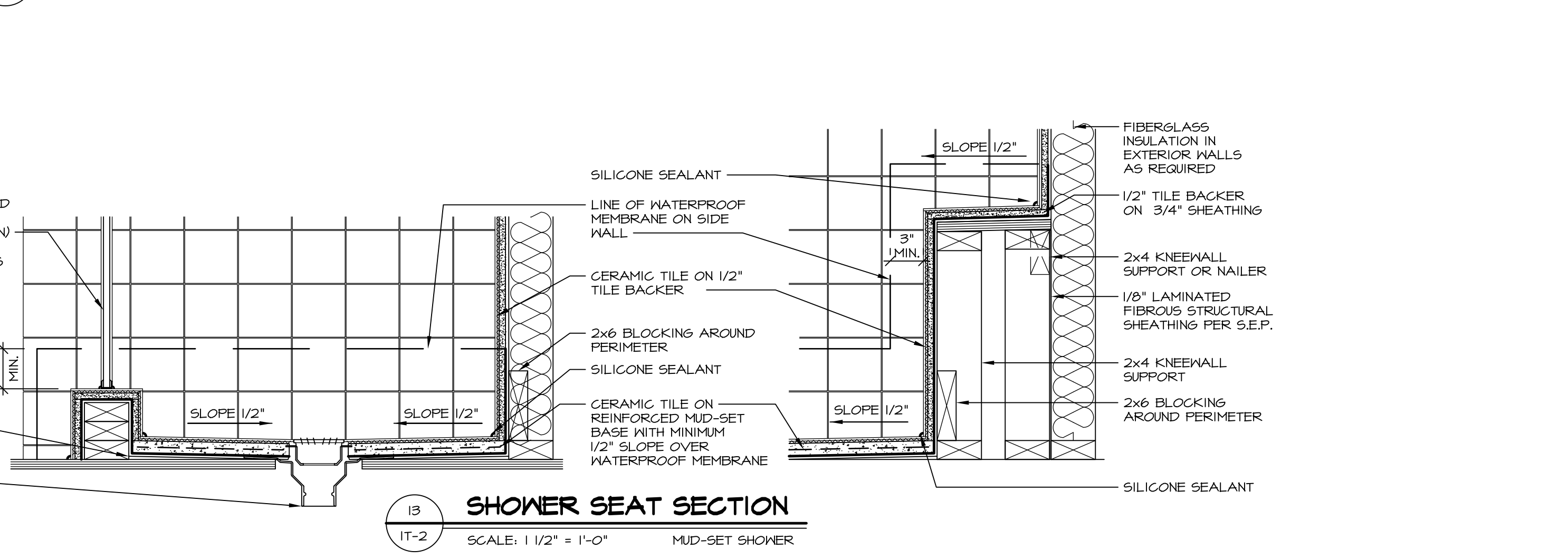
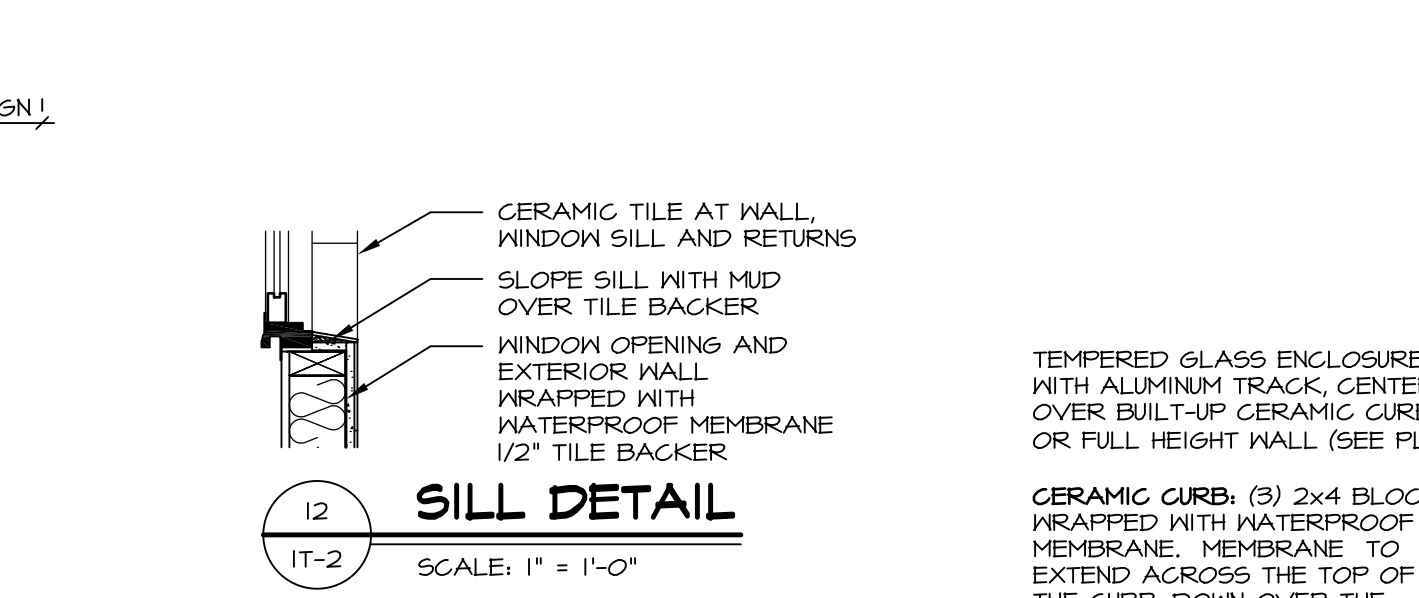
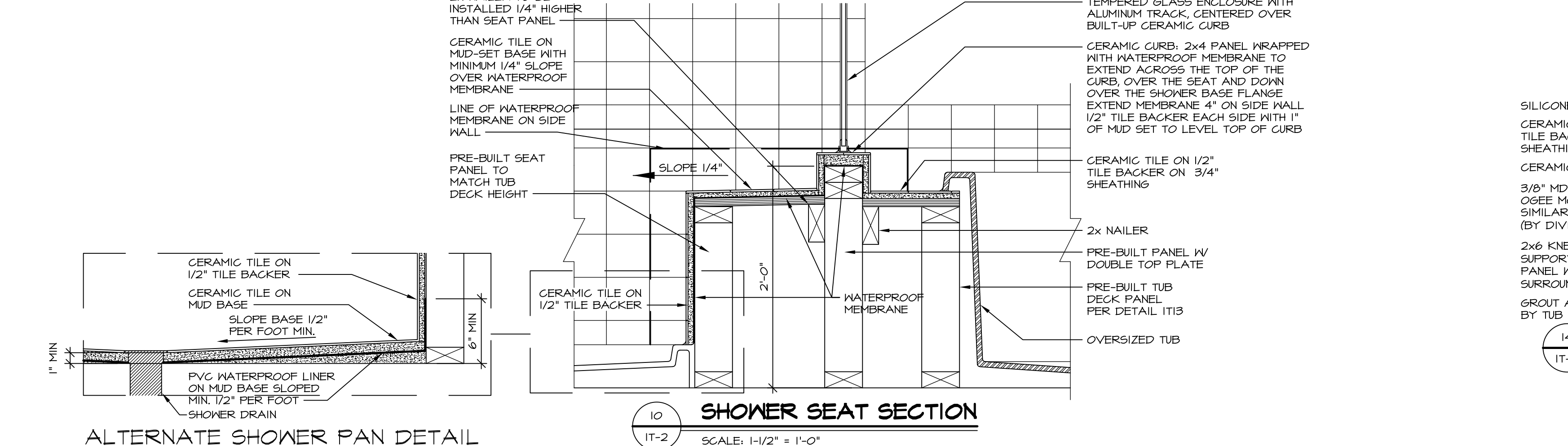
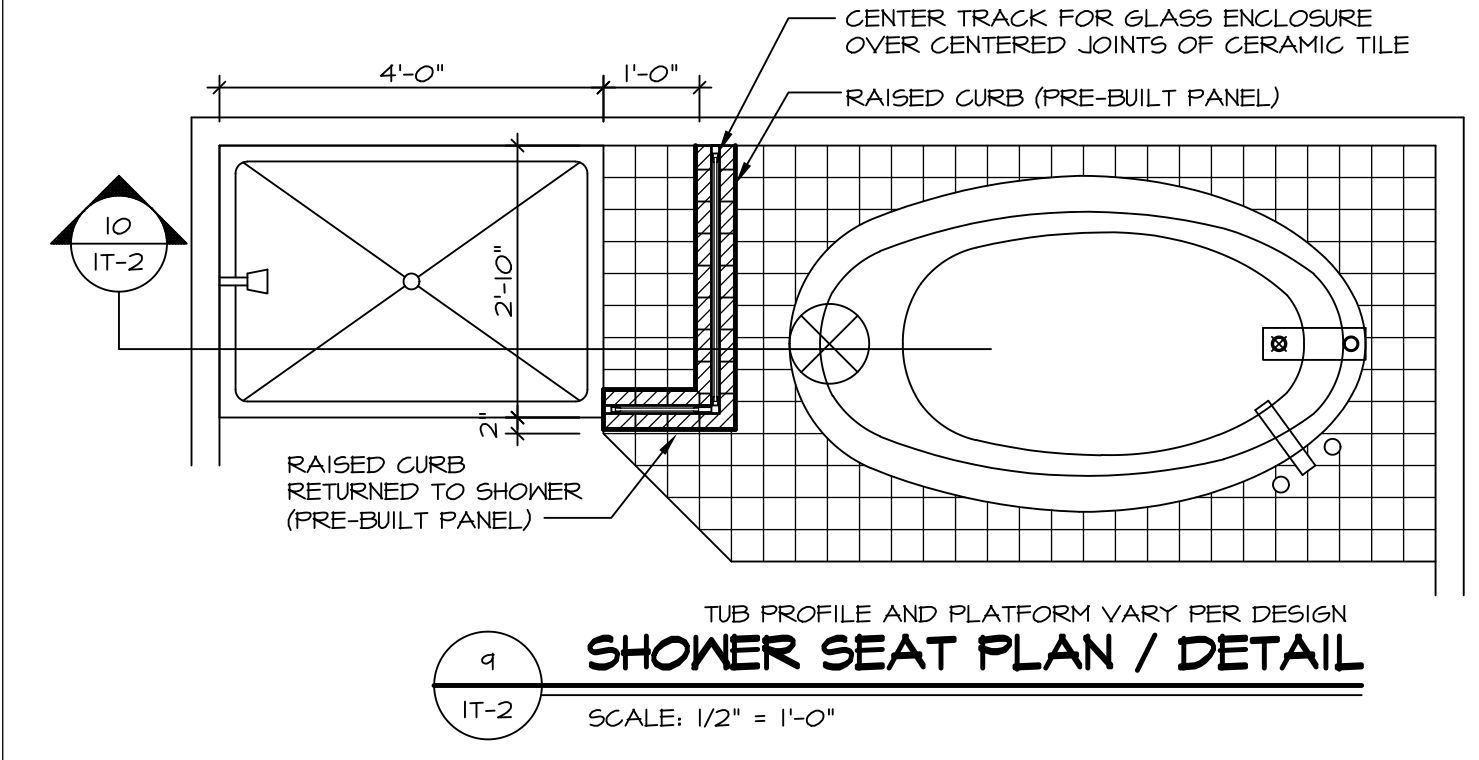
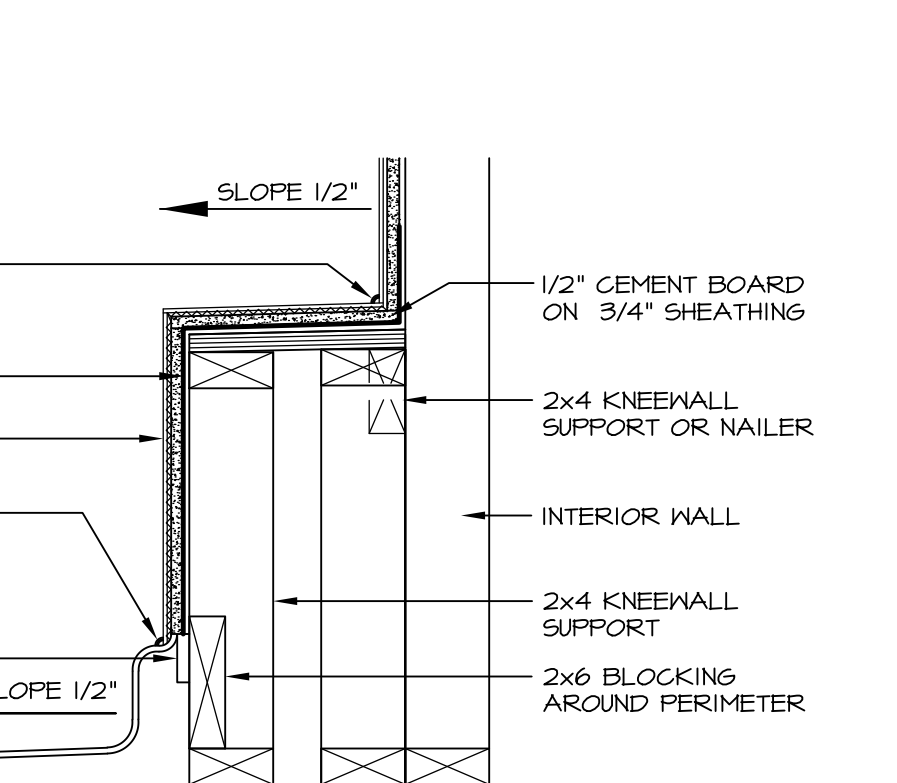
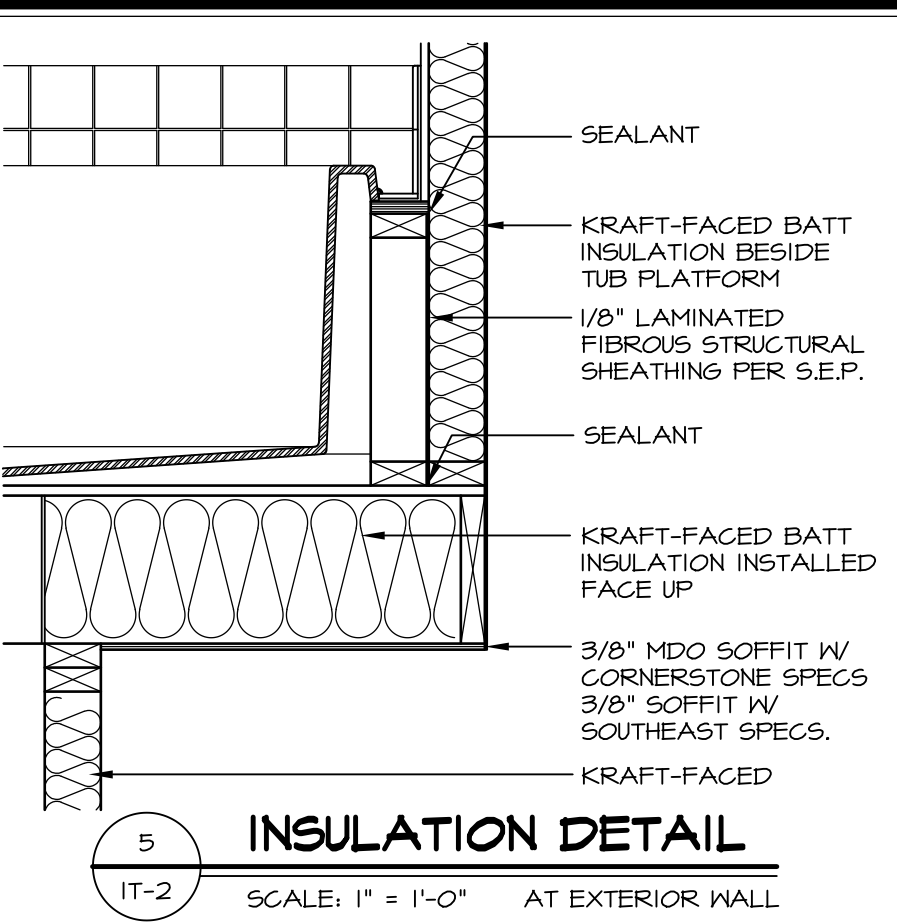
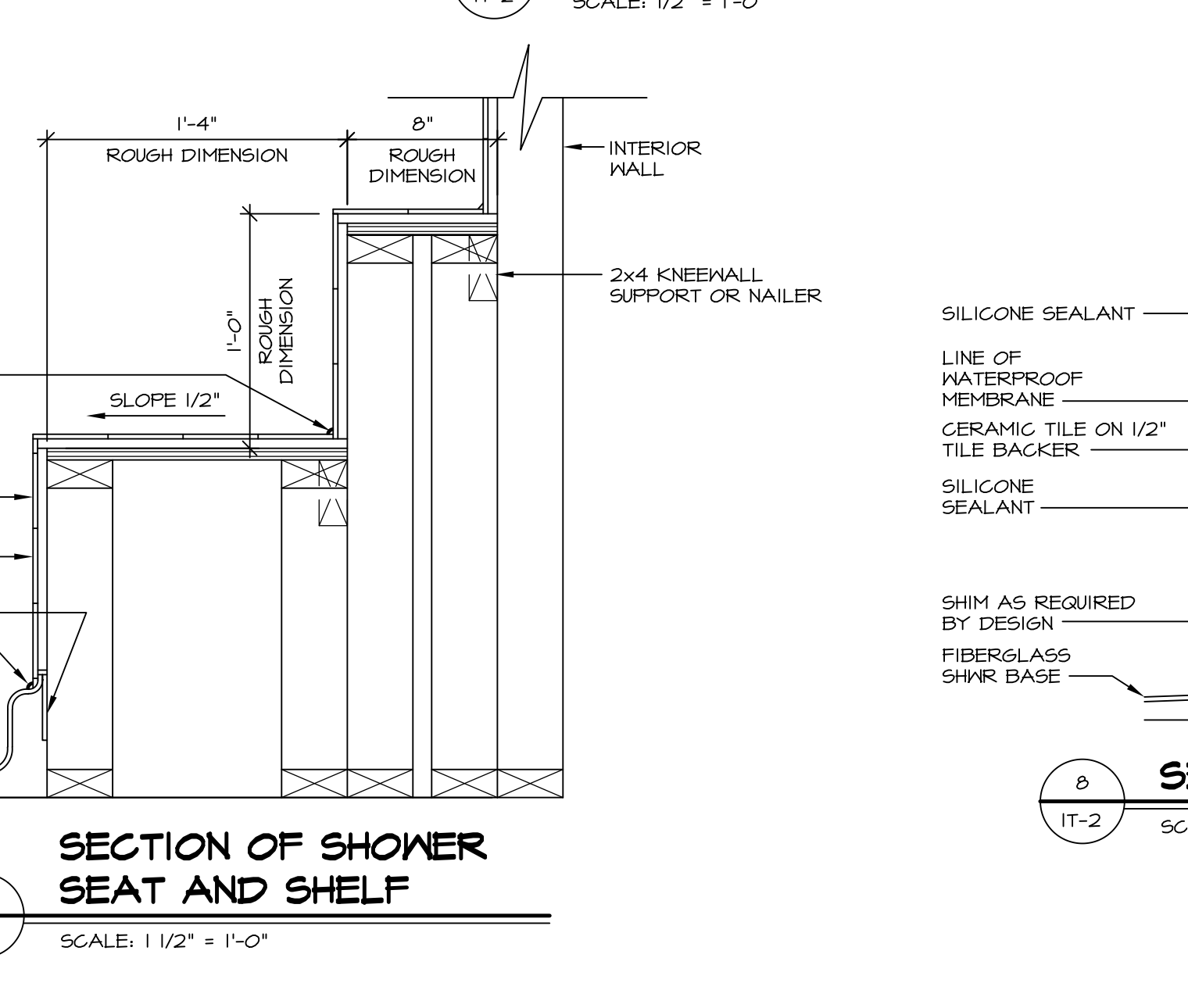
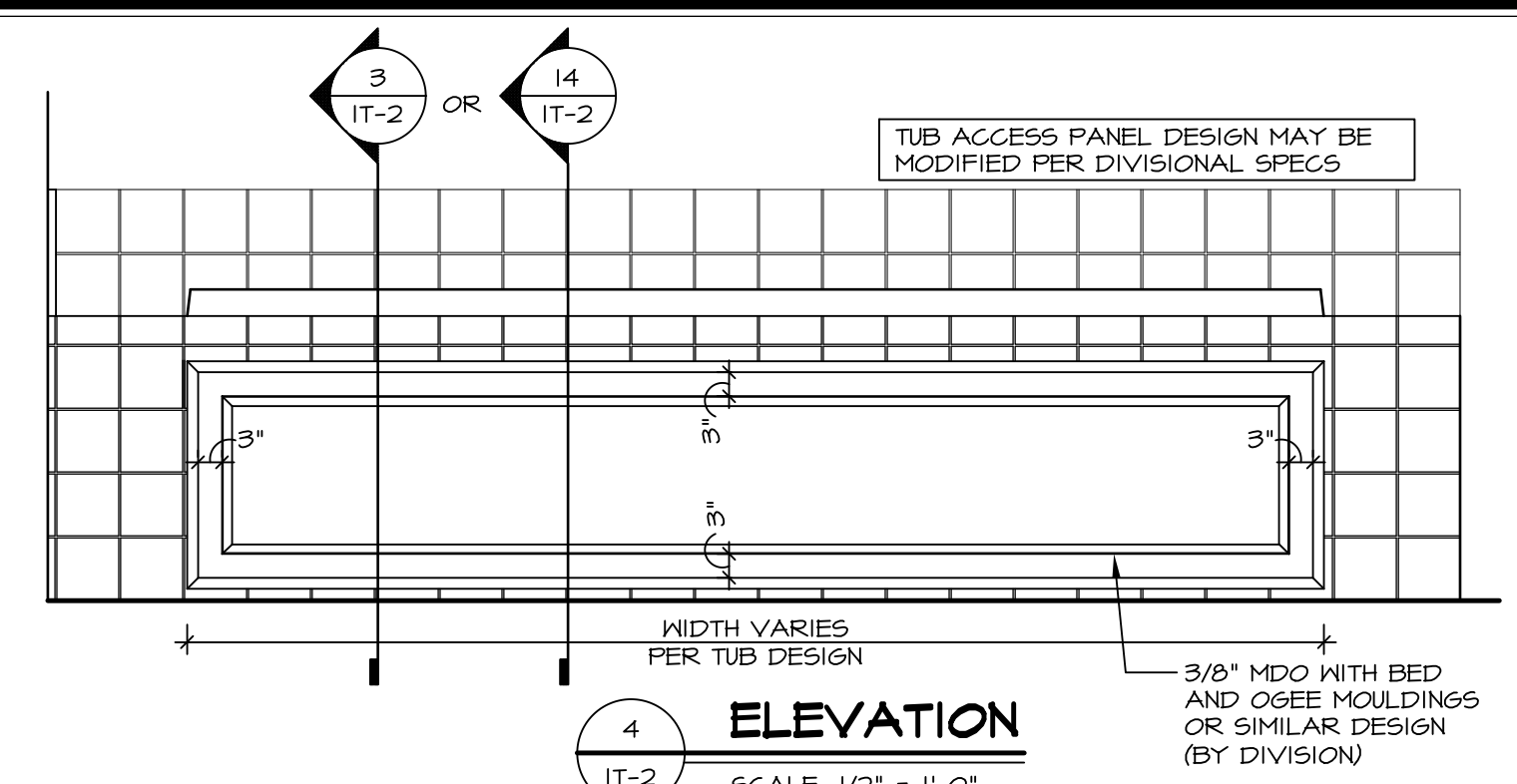
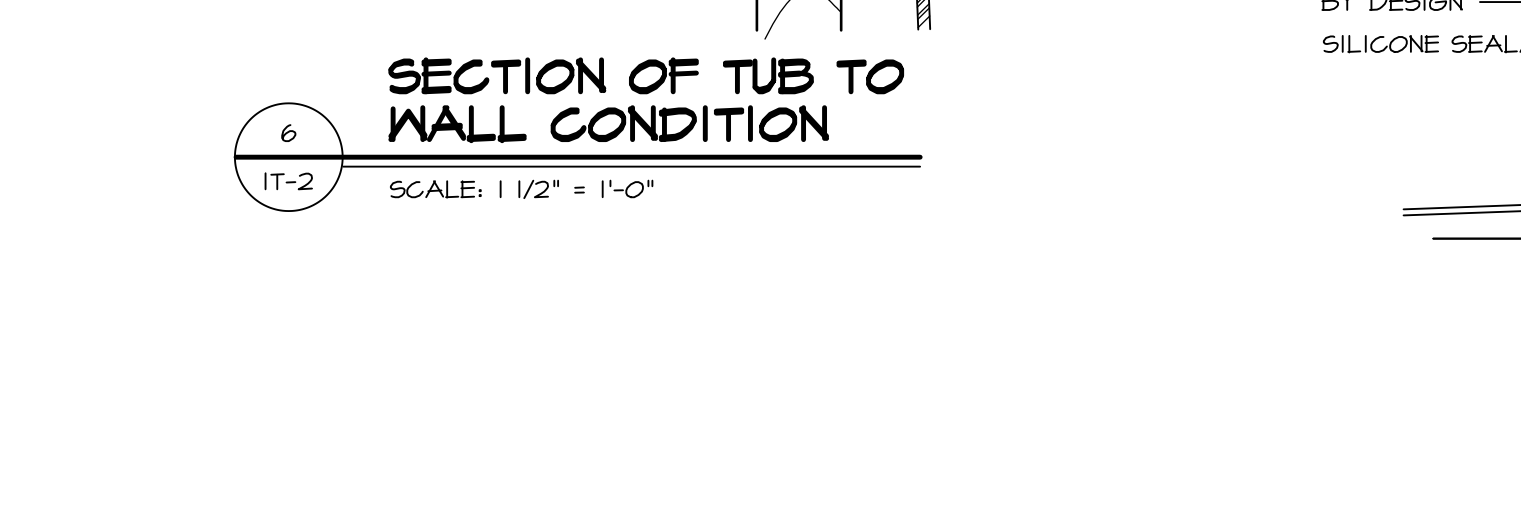
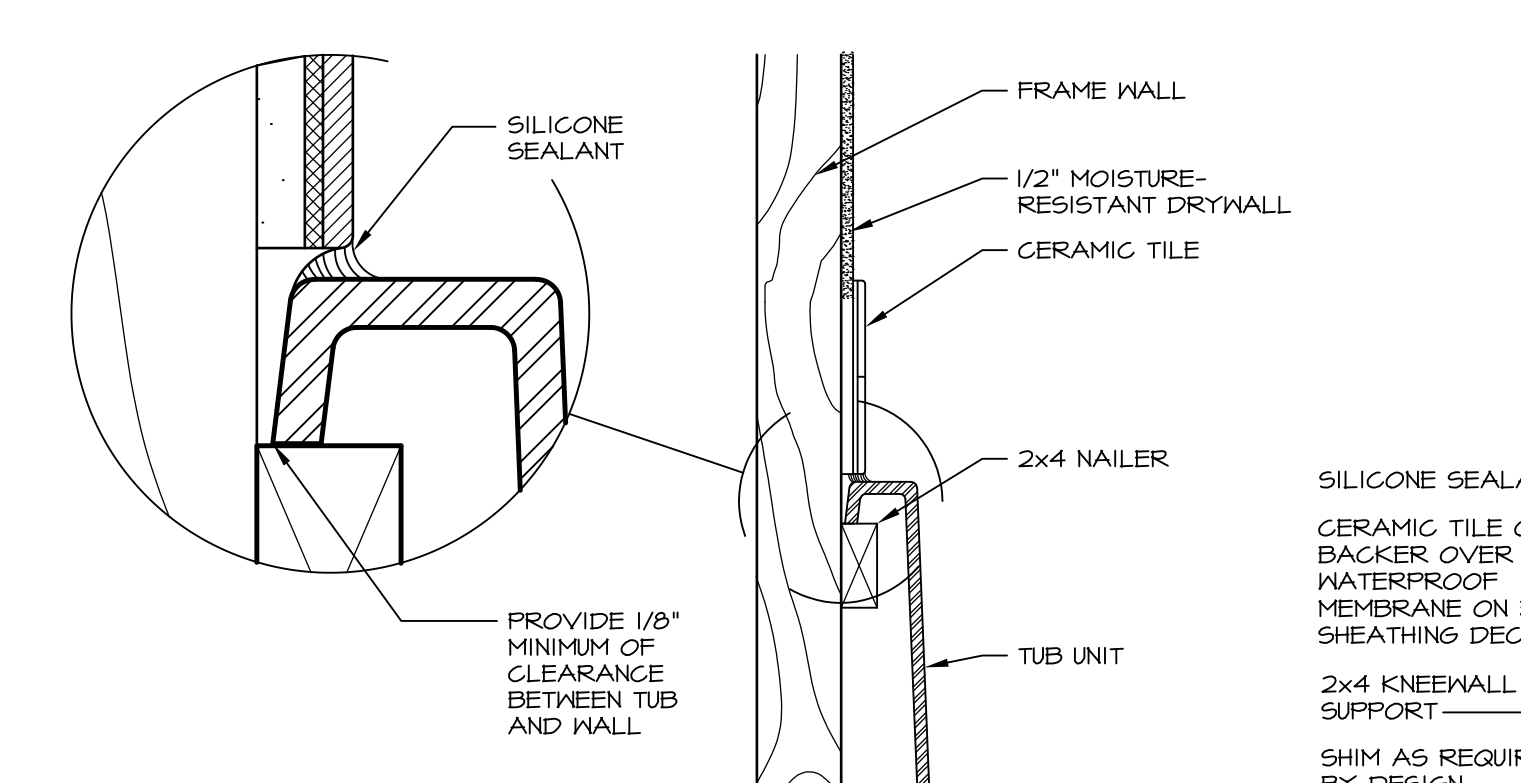
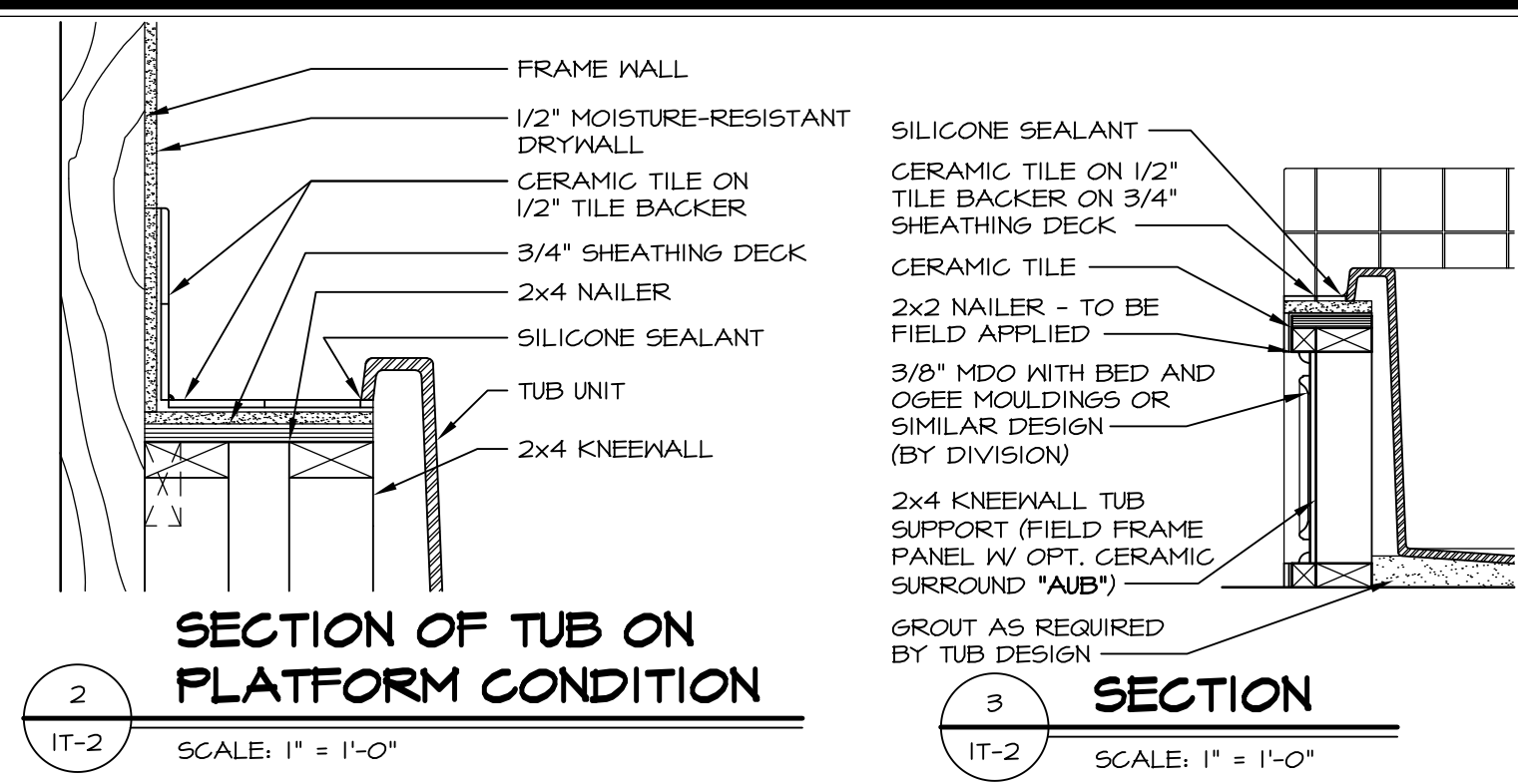
SET NO. NAPOO  
VERSION 06  
DRAWN BY TN  
DATE: 05/22/15  
OPTION

MODEL  
**NAPLES**  
DRAWING TITLE  
**SECOND FLOOR PLAN**  
OPTION DESCRIPTION



**1 PLATFORM PLANS**  
SCALE: 1/2" = 1'-0"

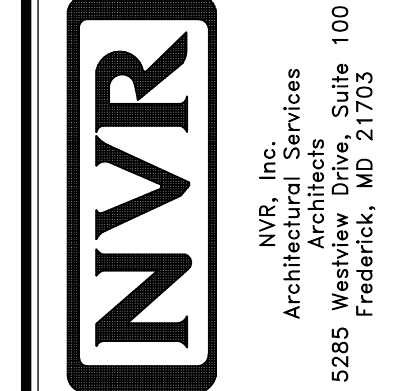
TUB	MANUF.	HEIGHT	WIDTH	LENGTH	TUB DECK PANEL HEIGHT
"A"	KOHLER/ STERLING	18 3/4"	42"	60"	17 1/8"
"C"	KOHLER/ STERLING	18 3/4"	36"	60"	17 1/8"
"E"	KOHLER/ STERLING	19 1/2"	60"	60"	17 7/8"
"L"	KOHLER/ STERLING	18 1/2"	42"	72"	16 7/8"
"N"	KOHLER/ STERLING	18 3/4"	36"	72"	17 1/8"
"P"	KOHLER/ STERLING	18 3/4"	42"	72"	17 1/8"



REVISIONS

REV. NO.	DATE	DESCRIPTION
1	5/1/17	EBP - REVISED DETAIL 1 AND 11 TO REMOVE TUB ACCESS PANEL REF. (DSS #15 5414)
2	9/2/17	EBP - REVISED T-FLY NOTE TO CALL OUT LFS
3	9/2/17	EBP - REVISED NOTE ON DETAIL #1 - REVISED ORDER OF MATERIAL PARA#4934

NVR, Inc., owner, expressly reserves its common law copyright and other property rights in these plans. These plans are not to be reproduced, copied, or otherwise used in any way without the prior written consent of NVR, Inc.



SET NO. NVR

VERSION

DRAWN BY

DATE:

OPTION

MODEL STANDARD DETAILS

DRAWING TITLE INTERIOR TRIM DETAILS

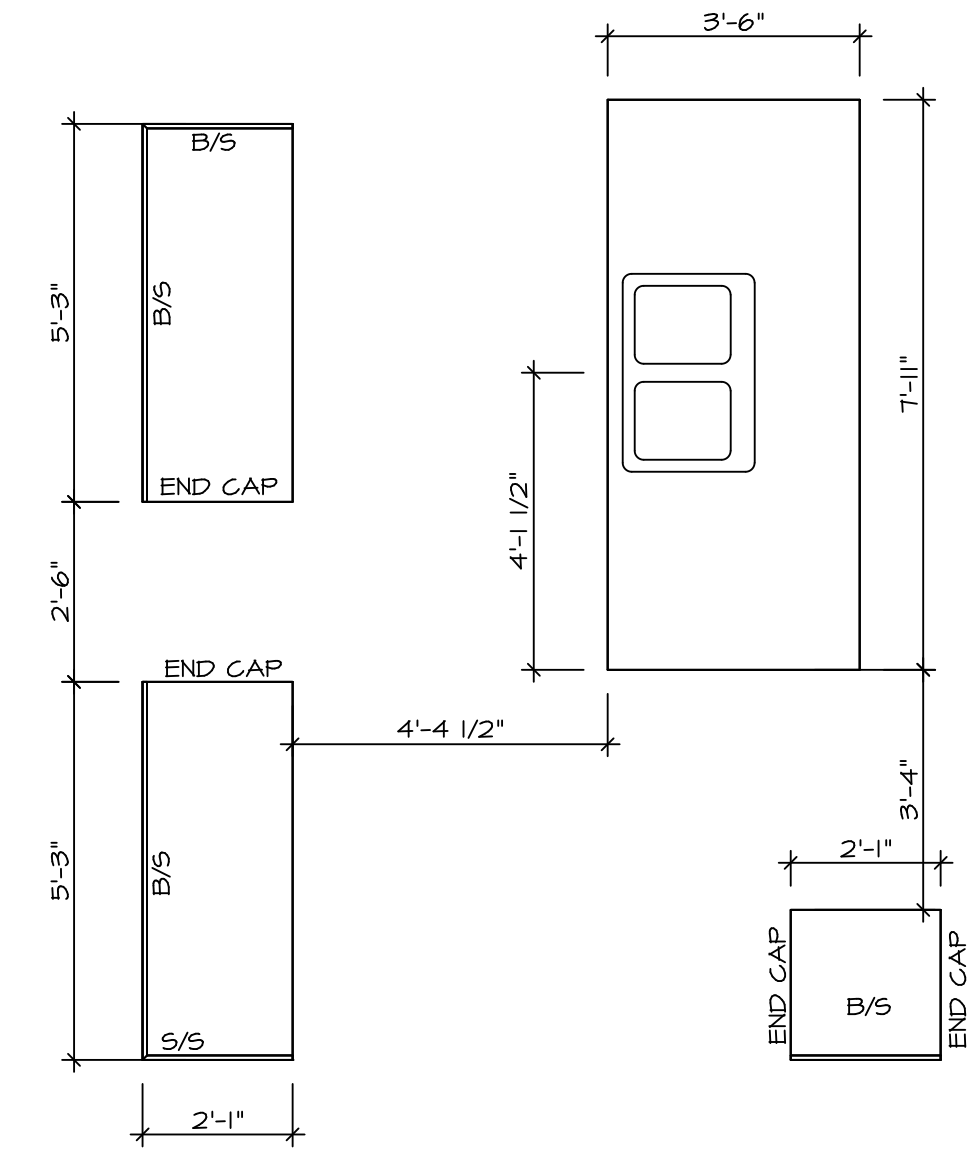
BATH DETAILS

OPTION DESCRIPTION

SHEET NO. IT-2

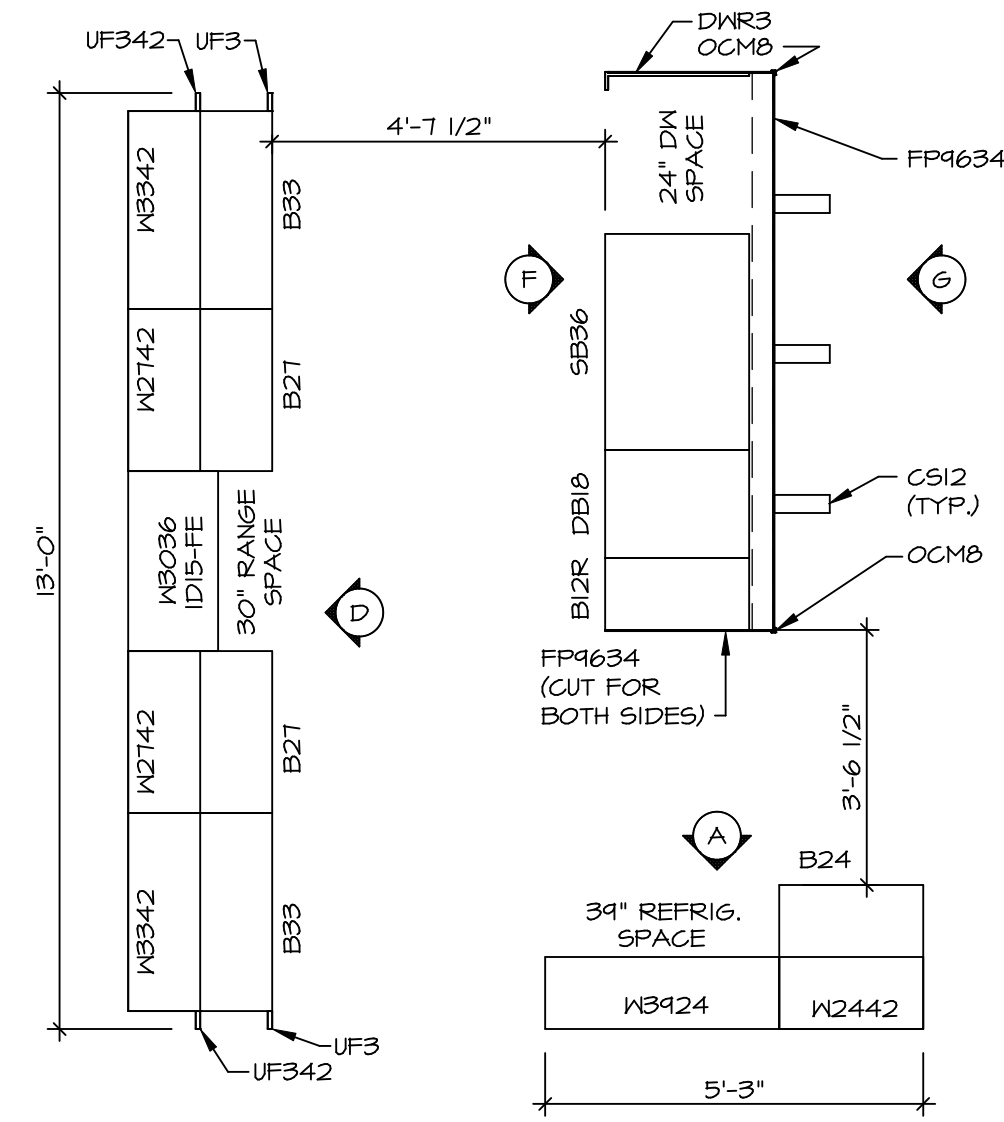
J:\Dwg\NVR\Interior Trim\IT2.dwg 09/27/17 - 9:20 am





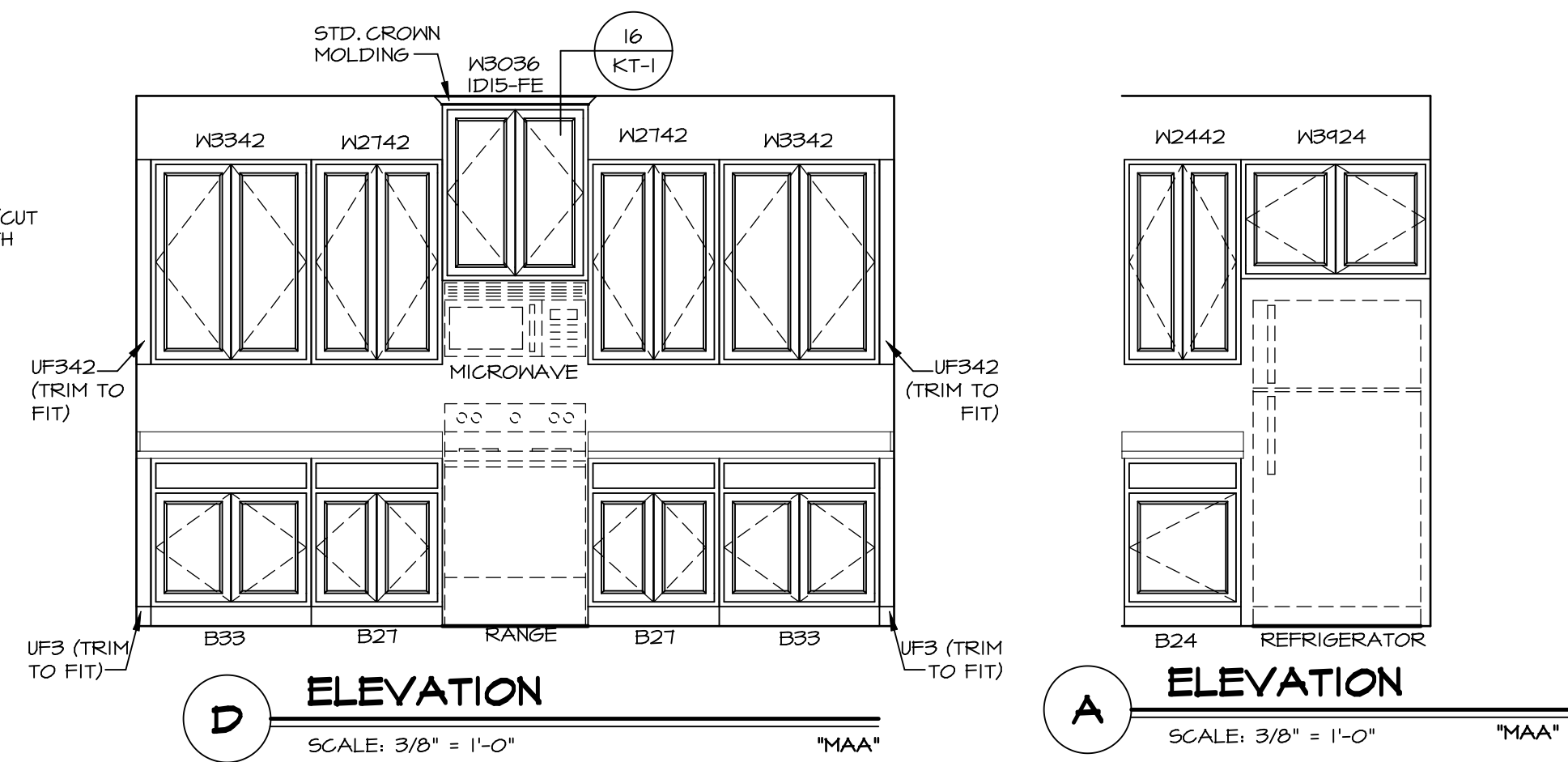
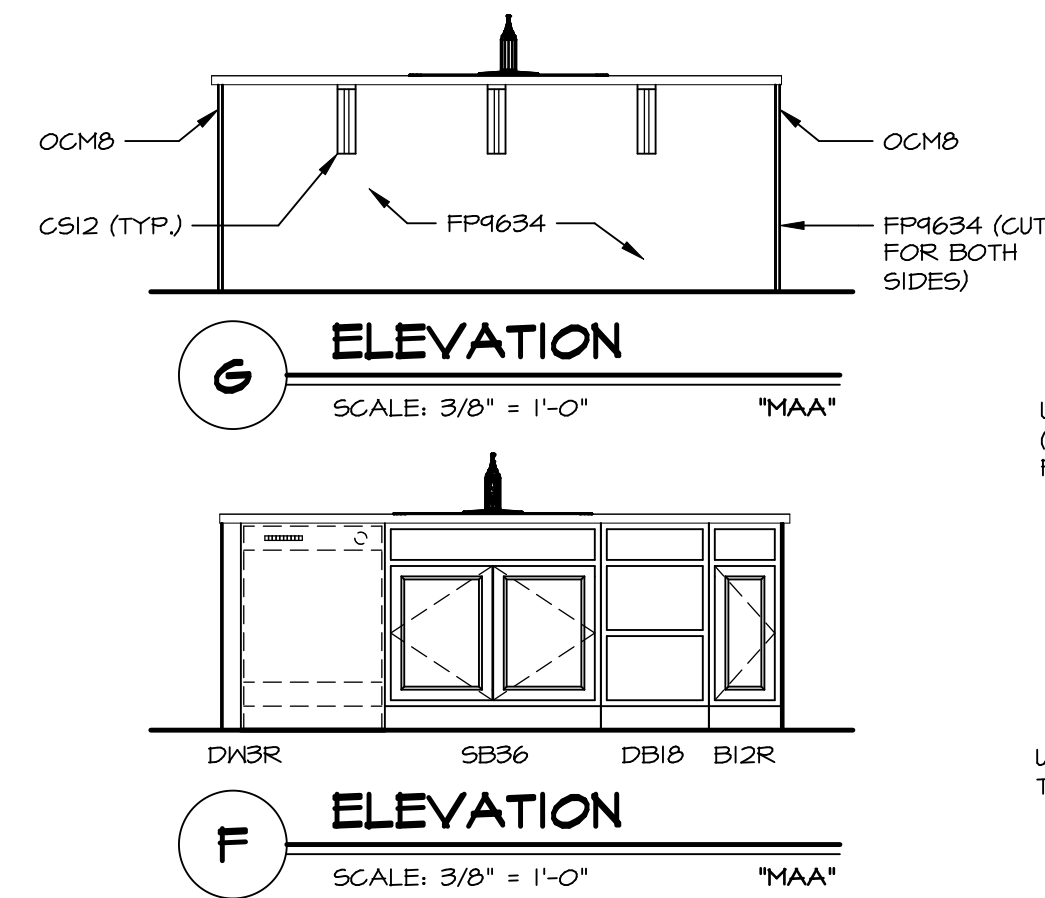
**KITCHEN COUNTERTOP  
PLAN - KT-3293**

2  
A-12 SCALE: 3/8" = 1'-0"



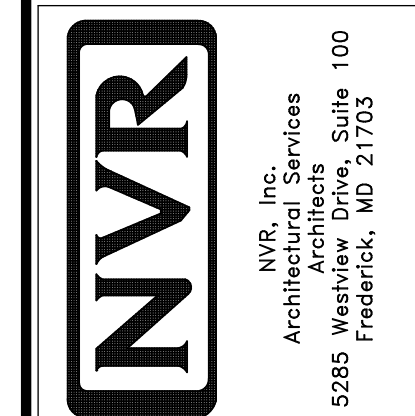
**KITCHEN CABINET  
PLAN - KC-3293**

4  
A-12 SCALE: 3/8" = 1'-0"



SHEET NO.	MODEL	SET NO.	VERSION	DRAWN BY	DATE	OPTION	REMARKS
A-12	NAPLES	06	06	TN	05/22/15		
49	NAPLES	06	06	TN	05/22/15		

NVR, Inc., owner, expressly reserves its copyright in these plans. These plans are not to be reproduced, changed, copied, or otherwise used in any way without the written consent of NVR, Inc.

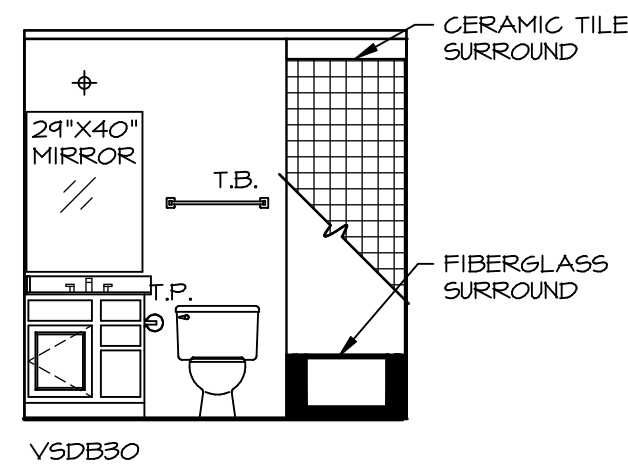


SET NO. NAPOO  
VERSION 06  
DRAWN BY TN  
DATE: 05/22/15  
OPTION

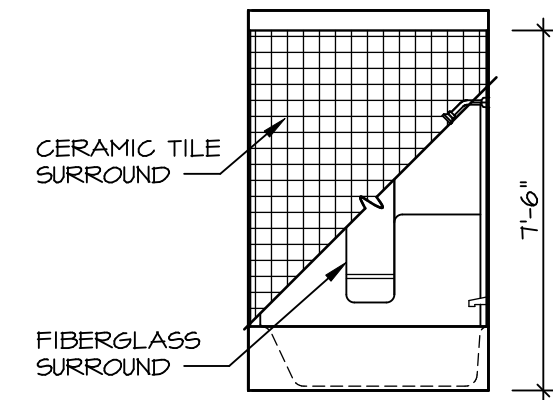
DRAWING TITLE  
KITCHEN SECTION

OPTION DESCRIPTION

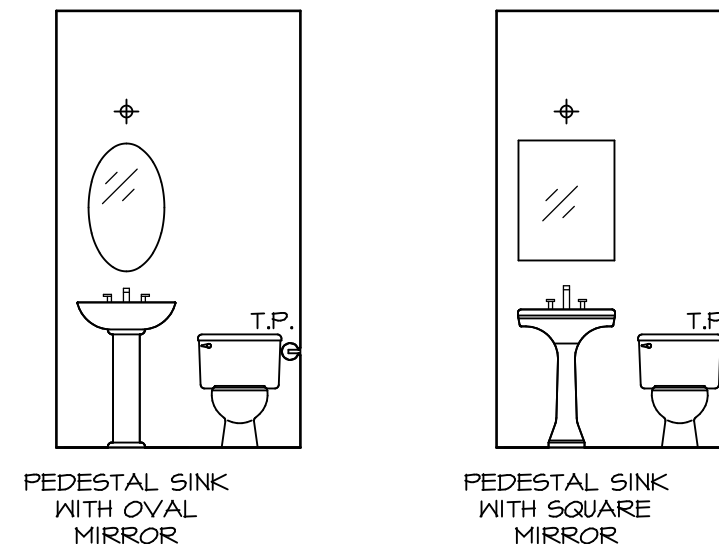
C:\NVR\Solves\NAPLES\_NAPOO\_06\DCY-CY-4175-884543\Sheet\Lot\_Specific\49\_A-12\_KIT\_LS.dwg 08/01/18 - 2:57 am



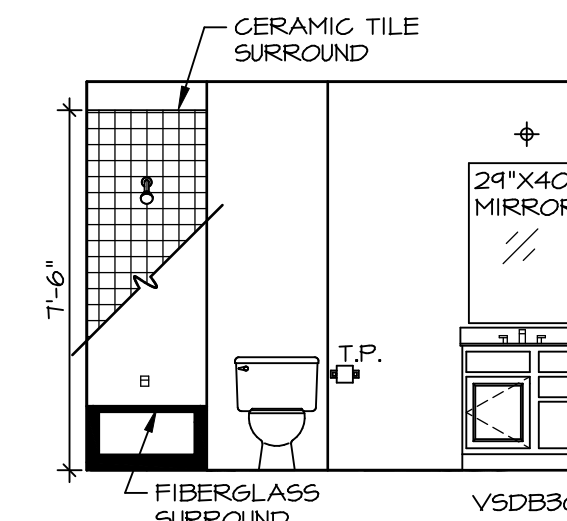
**L BASEMENT BATH**  
SCALE: 1/4" = 1'-0"



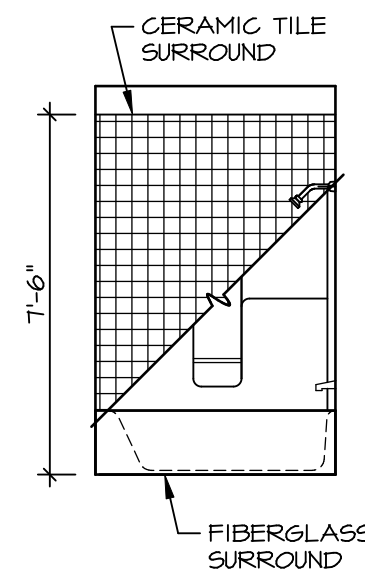
**M BASEMENT BATH**  
SCALE: 1/4" = 1'-0"



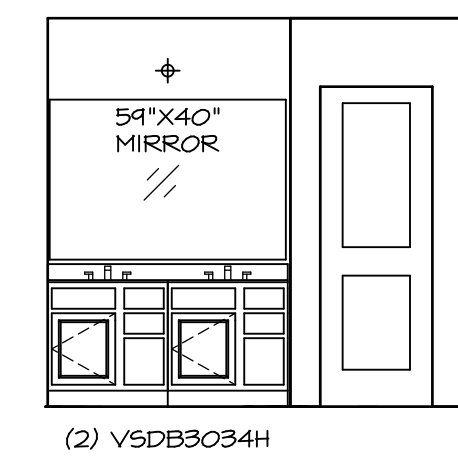
**A POWDER ROOM**  
SCALE: 1/4" = 1'-0"



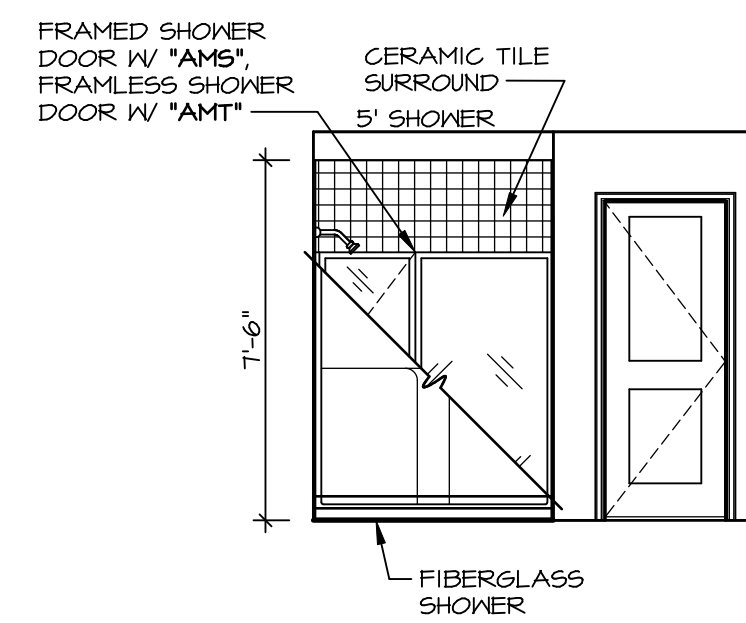
**B BATH #1**  
SCALE: 1/4" = 1'-0"



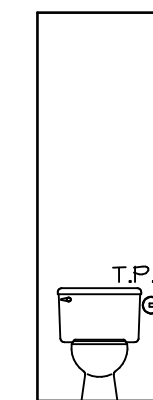
**C BATH #1**  
SCALE: 1/4" = 1'-0"



**D OWNER'S BATH**  
SCALE: 1/4" = 1'-0"



**J OWNER'S BATH**  
SCALE: 1/4" = 1'-0"



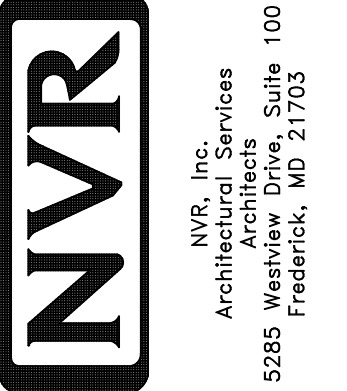
**E OWNER'S BATH**  
SCALE: 1/4" = 1'-0"

**NOTES:**

1. TEMPERED GLASS SHOWER ENCLOSURE WITH SWING DOOR OR OPTIONAL SLIDING DOOR. BY DIVISION TUB ACCESS PANELS PROVIDED AS NEEDED. ALL MATERIALS BY DIVISION
2. REFER TO SHEET ET-2 FOR TUB AND SHOWER DETAILS.
3. ALL VSD24-42 DRAWERS TO BE SET ON RIGHT HAND.
4. BATH ELEVATIONS ARE SHOWN PER PLAN.

SHEET NO. <b>A-13</b>	MODEL <b>NAPLES</b>	SET NO. NAPOO	REVISIONS	REVISIONS	REVISIONS	REVISIONS	REVISIONS	REVISIONS	REVISIONS
		VERSION 06	DATE	DATE	DATE	DATE	DATE	DATE	DATE
DRAWING TITLE <b>BATH ELEVATIONS</b>		DRAWN BY TN	DATE: 05/22/15	OPTION	REVISIONS				
OPTION DESCRIPTION		REVISIONS							
51		REVISIONS							

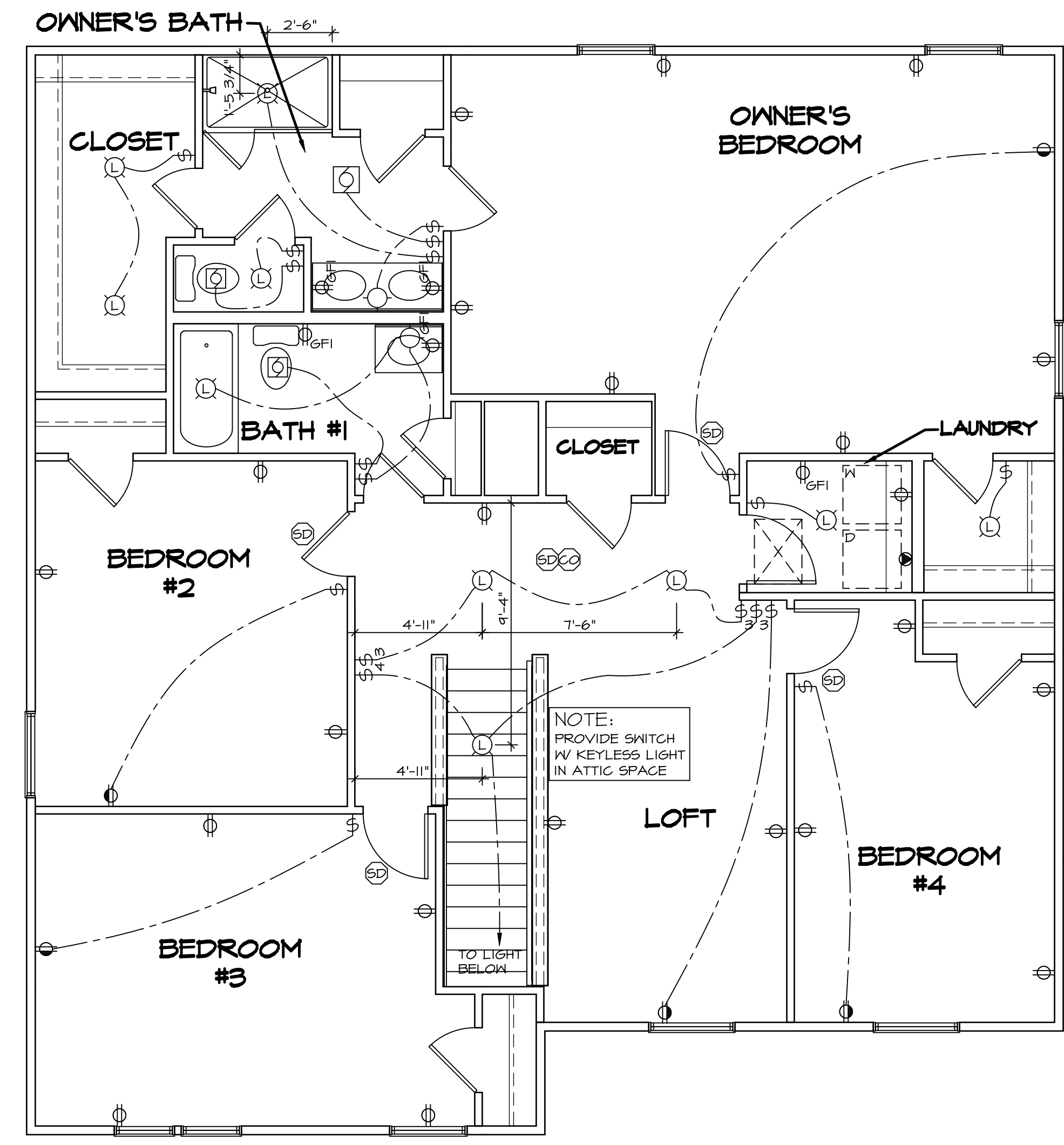
NVR, Inc., owner, expressly reserves its copyright in these plans. These plans are not to be reproduced, changed, copied in any way, or used for any purpose not assigned to them without the written consent of NVR, Inc.



- NOTES:
1. ALL ELECTRICAL PLANS ARE SCHEMATIC ONLY AND NOT INTENDED AS ENGINEERED DRAWINGS. THESE PLANS REPRESENT THE DESIGN INTENT FOR SWITCH AND RECEPTACLE LOCATIONS. ADDITIONAL INFORMATION, IF REQUIRED, SHALL BE PROVIDED BY A LICENSED ELECTRICAL SUBCONTRACTOR OR ENGINEER.
  2. ALL KITCHEN BATHS, GARAGES, LAUNDRY ROOM, UNFINISHED BASEMENT, WETBARS AND ALL OUTDOOR RECEPTACLES ARE TO BE GFI PROTECTED.
  3. PROVIDE SWITCH W/ KEYLESS LIGHT IN ATTIC SPACE.
  4. PROVIDE SWITCH W/ KEYLESS LIGHT AND GFI RECEPTACLE WHEN HVAC EQUIPMENT IS IN ATTIC SPACE.
  5. PROVIDE ARC-FAULT CIRCUIT INTERRUPTERS TO ALL BEDROOM RECEPTACLES.
  6. WASHER ON LEFT, DRYER ON RIGHT (PER PLAN OR REVERSED).
  7. DRYER RECEPTACLE 110 W/ GAS OR 220 W/ ELECTRIC.

**ELECTRICAL LEGEND**

⊕	SINGLE POLE SWITCH
⊕	THREE WAY SWITCH
⊕	FOUR WAY SWITCH
⊕	DUPLEX RECEPTACLE
⊕	DUPLEX RECEPTACLE - BOTTOM HALF SWITCHED
⊕	DUPLEX RECEPTACLE - FLOOR MOUNTED
⊕	RECEPTACLE - 220V
⊕	DUPLEX RECEPTACLE - GROUND FAULT INTERRUPT
⊕	DUPLEX RECEPTACLE - WEATHER PROOF AND GROUND FAULT INTERRUPT
⊕	SMOKE DETECTOR - WIRED IN SERIES
⊕	CARBON MONOXIDE DETECTOR
⊕	EXHAUST FAN MOTOR
⊕	EXHAUST FAN MOTOR WITH LIGHT
⊕	TELEVISION RECEPTACLE
⊕	TELEPHONE RECEPTACLE
⊕	DOOR CHIME
⊕	LIGHT FIXTURE - WALL MOUNTED
⊕	LIGHT FIXTURE - CEILING MOUNTED
⊕	LIGHT FIXTURE - RECESSED
⊕	LIGHT FIXTURE - RECESSED WEATHER PROOF
⊕	LIGHT FIXTURE - CEILING MOUNTED LED
⊕	LIGHT FIXTURE - HANGING
⊕	LIGHT FIXTURE - PENDANT
⊕	LIGHT FIXTURE - FLUORESCENT
⊕	LIGHT FIXTURE - UNDER CABINET LIGHT
⊕	PULLCHAIN LAMPHOLDER
⊕	KEYLESS LAMPHOLDER



**SECOND FLOOR PLAN**  
SCALE: 1/4" = 1'-0"

SHEET NO. <b>E-3</b>	MODEL <b>NAPLES</b>	SET NO. NAPOO	REV. NO.	DATE	REMARKS
		VERSION 06	1	08/07/18	
OPTION DESCRIPTION <b>55</b>	DRAWING TITLE <b>SECOND FLOOR ELECTRICAL PLAN</b>	DRAWN BY TN			
		DATE: 05/22/15			
		OPTION			
		<p>NVR, Inc. owner, expressly reserves its copyright in these plans. These plans are not to be reproduced, changed, copied in any way, or used for any other project without the written consent of NVR, Inc.</p>			
		<p><b>NVR</b> Architectural Services Architects 5285 West Lake Drive, Suite 100 Frederick, MD 21703</p>			
		<p>C:\NVR\Solves\NAPLES_NAPOO_06\DCY-CY-4175\884543\Sheet\Lot_Specific\55_E-3_PLN2_ELEC_LS.dwg 08/07/18 - 2:57 pm</p>			