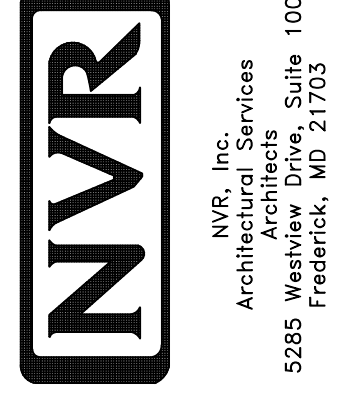


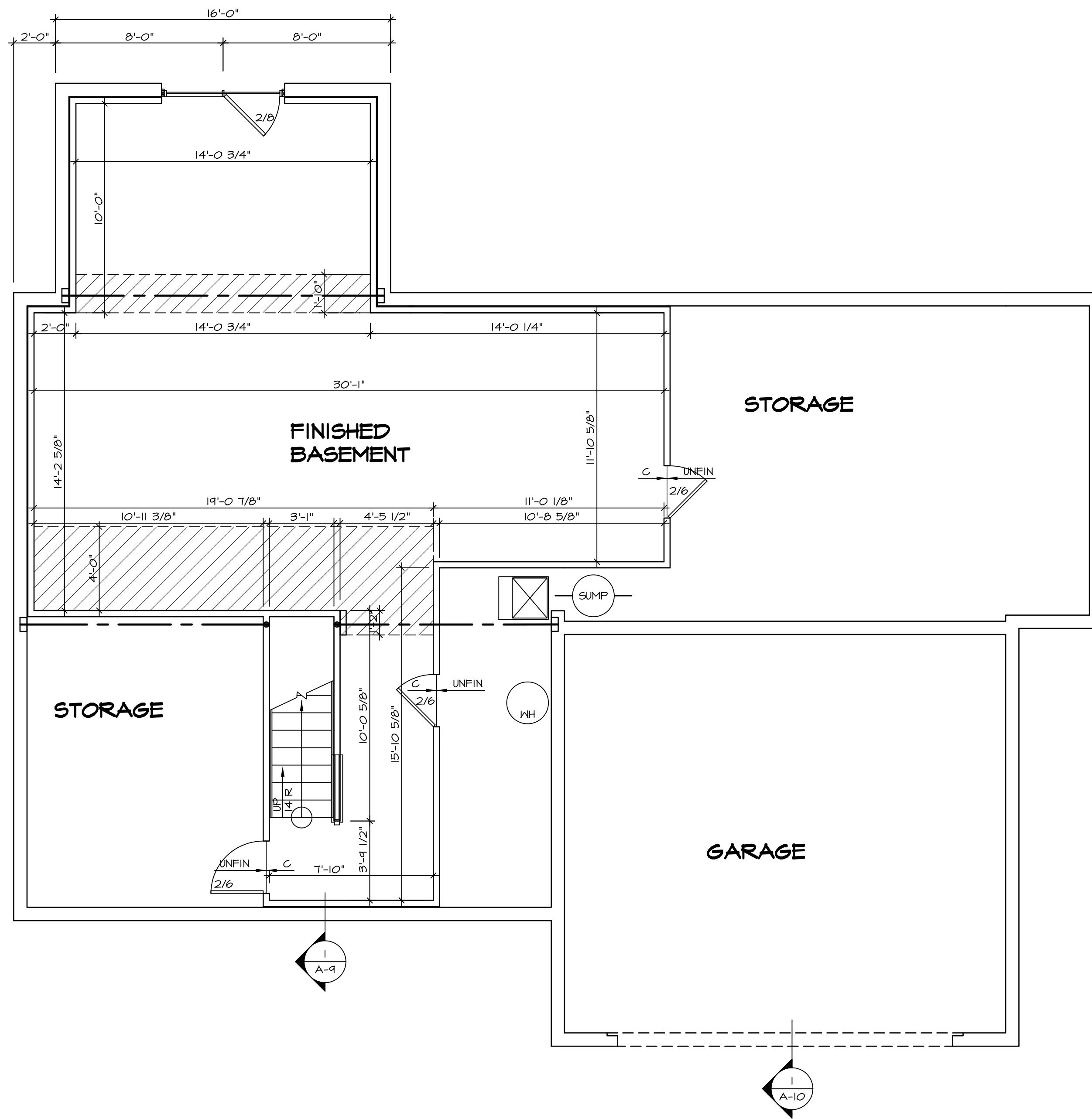
1 PLUMBING PLAN
 A-5 SCALE: 1/4" = 1'-0"

SHEET NO. A-5	MODEL PALERMO	SET NO. PALOO
OPTION DESCRIPTION 48	DRAWING TITLE PLUMBING PLAN	VERSION 03
	DATE:	DRAWN BY:
	OPTION:	



NVR, Inc., owner, expressly reserves its copyright in these plans. These plans are not to be reproduced, changed, adapted, or otherwise used in any way without the written consent of NVR, Inc.

REV. NO.	DATE	REMARKS



BASEMENT FLOOR PLAN
SCALE: 1/4" = 1'-0"

LEGEND	
	BEARING WALL
	NON BEARING WALL
	INDICATES BEARING FROM POINT-LOAD ABOVE
	JACKS
	BEAM/HEADER
	PAD FOOTING
	STEEL COLUMN
	PORTAL FRAME
	JOIST/TRUSS
	LVL
	ENGINEERING PAGE NUMBER

SEE FC DETAILS FOR FRAMING CONNECTORS

- FLOOR PLAN NOTES**
- ALL HEADERS ARE (2) 2x6 w/ 2x4 WALLS OR (3) 2x6 w/ 2x6 WALLS, UNLESS OTHERWISE NOTED.
 - ALL HEADERS TO HAVE (1) 2x4 OR 2x6 JACK EACH END, UNLESS OTHERWISE NOTED.
 - ALL EXTERIOR WALLS TO BE 4" AND ALL INTERIOR WALLS TO BE 3 1/2", UNLESS OTHERWISE NOTED.
 - HATCHED AREAS INDICATE DROPPED CEILINGS. ALL DROPPED CEILINGS ARE 12" UNLESS OTHERWISE NOTED.
 - SEE "BRACED WALL PANEL DETAIL SHEET" FOR SPECIAL WALL FRAMING LOCATIONS AND HEADER SIZES, IF APPLICABLE.
 - SEE STANDARD DETAIL CATEGORY "IT" SHEET(S) FOR INTERIOR TRIM DETAILS.
 - SEE ARCHITECTURAL DETAIL SHEET "AD" FOR HOUSE SPECIFIC INTERIOR TRIM OPTION TABLE.
 - ALL WINDOWS HAVE 7'-0" 1/2" HEADER HEIGHT UNLESS OTHERWISE NOTED.
 - ALL CASED OPENINGS AT T-11", UNLESS OTHERWISE NOTED.

- GYPSUM NOTES**
- AT GARAGE:
GYPSUM BOARD AT COMMON WALLS, CEILINGS, BEAM WRAPS AND SUPPORTS PER STANDARD DETAIL FA-1(b) FIRE ASSEMBLIES OR AS REQUIRED BY LOCAL CODE.
- AT STAIRS:
1/2" GYPSUM BOARD AT UNDERSIDE OF STAIRS AND WALLS IN CLOSET

SHEET NO.	MODEL	SET NO.	DATE	REV. NO.	DATE	REMARKS
A-6	PALERMO	03	08/07/17	1		
51						

NVR, Inc., owner, expressly reserves its common law copyright in these plans. These plans are not to be reproduced, changed, copied in any way, or otherwise used without the written consent of NVR, Inc.

NVR
 NVR, Inc.
 Architectural Services
 Architects
 5285 Washington Blvd, Suite 100
 Frederick, MD 21703

SET NO. PALOO
 VERSION 03
 DRAWN BY
 DATE:
 OPTION

DRAWING TITLE
 BASEMENT FLOOR PLAN

OPTION DESCRIPTION

FIRST FLOOR JACK SCHEDULE				
IDENTIFIER	DESCRIPTION	OPTIONS	ENG. NUM.	REMARKS
J106	JACK - (2) 2X4 SFF STUD GRADE		1012	
J107	JACK - (2) 2X4 SFF STUD GRADE		1012	
J108	JACK - (2) 2X4 SFF STUD GRADE		1012	
J109	JACK - (3) 2X4 SFF STUD GRADE	GCB	1046	
J110	JACK - (3) 2X4 SFF STUD GRADE	GCB	1046	
J120	JACK - (4) 2X6 SFF STUD GRADE	MAA	1019	
J121	JACK - (3) 2X6 SFF STUD GRADE	MAA	1019	FIELD INSTALLED
J122	JACK - (3) 2X4 SFF STUD GRADE	SRH	1040	
J123	JACK - (3) 2X4 SFF STUD GRADE	SRH	1044	
J133	JACK - (2) 2X4 SFF STUD GRADE	GCBMAV	1049, 1131	CRIPPLES
J134	JACK - (2) 2X4 SFF STUD GRADE	GCBMAV	1049, 1131	CRIPPLES
J157	JACK - (2) 2X4 9P#1	ELE	1021	
J167	JACK - (2) 2X4 SFF STUD GRADE	LGG	1082	
J168	JACK - (2) 2X4 SFF STUD GRADE	LGG	1082	
J170	JACK - (2) 2X4 9P#1	ELE		

LVL PLY TO PLY FASTENING SCHEDULE:

1A - (2) FLY UP TO AND INCLUDING 1 7/8" TALL; FASTEN FLIES W/ (2) ROWS 16D NAILS AT 12" O.C.
 2A - (2) FLY 14" TO AND INCLUDING 18" TALL (INCLUSIVE); FASTEN FLIES W/ (3) ROWS 16D NAILS AT 12" O.C.
 3A - (2) FLY 20" TALL AND OVER; FASTEN FLIES W/ (4) ROWS 16D NAILS AT 12" O.C.
 4A - (3) FLY UP TO AND INCLUDING 11 7/8" TALL; FASTEN FLIES W/ (2) ROWS 16D NAILS AT 12" O.C. FROM EACH SIDE
 5A - (3) FLY 14" TO AND INCLUDING 18" TALL (INCLUSIVE); FASTEN FLIES W/ (3) ROWS 16D NAILS AT 12" O.C. FROM EACH SIDE
 6A - (3) FLY 20" TALL AND OVER; FASTEN FLIES W/ (4) ROWS 16D NAILS AT 12" O.C. FROM EACH SIDE

FIRST FLOOR BEAM/HEADER SCHEDULE					
IDENTIFIER	DESCRIPTION	LENGTH	OPTIONS	ENG. NUM.	REMARKS
B101-3	LVL - 16	14'-4 1/2"	MAA	1019	5A, FIELD INSTALL
B105	BEAM STEEL - W12X40	22'-3 1/2"	ELE, MAV	1057, 1133	
B107-2	LVL - 14	17'-4"	MAV	1050, 1051	2A, FIELD INSTALL

LEGEND	
	BEARING WALL
	NON BEARING WALL
	INDICATES BEARING FROM POINT-LOAD ABOVE
	JACKS
	BEAM/HEADER
	PAD FOOTING
	STEEL COLUMN
	PORTAL FRAME
	JOIST/TRUSS
	LVL
	ENGINEERING PAGE NUMBER

SEE FC DETAILS FOR FRAMING CONNECTORS

FLOOR PLAN NOTES

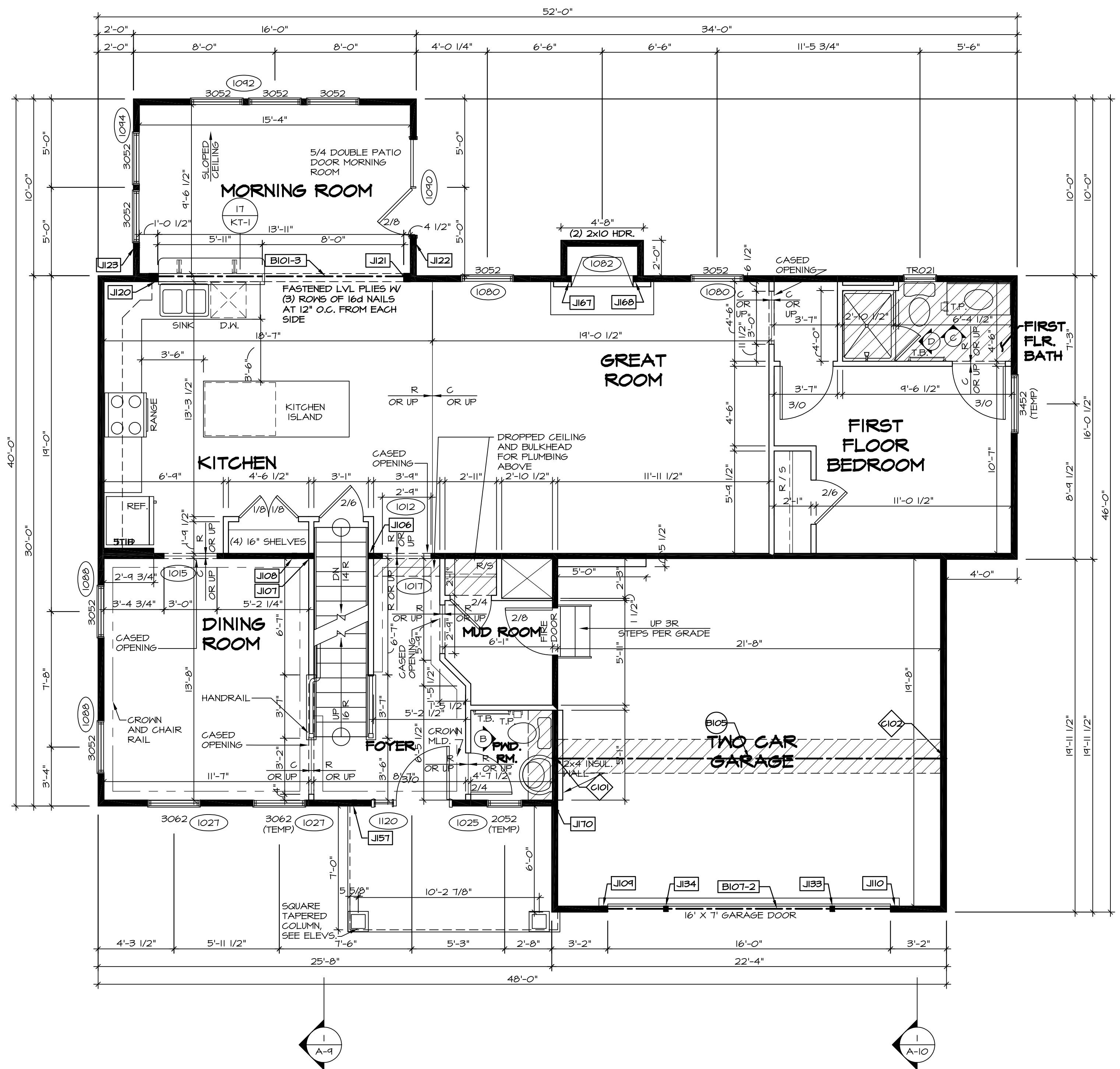
- ALL HEADERS ARE (2) 2x6 W/ 2x4 WALLS OR (3) 2x6 W/ 2x6 WALLS, UNLESS OTHERWISE NOTED.
- ALL HEADERS TO HAVE (1) 2x4 OR 2x6 JACK EACH END, UNLESS OTHERWISE NOTED.
- ALL EXTERIOR WALLS TO BE 4" AND ALL INTERIOR WALLS TO BE 3 1/2", UNLESS OTHERWISE NOTED.
- HATCHED AREAS INDICATE DROPPED CEILINGS. ALL DROPPED CEILINGS ARE 12" UNLESS OTHERWISE NOTED.
- SEE "BRACED WALL PANEL DETAIL SHEET" FOR SPECIAL WALL FRAMING LOCATIONS AND HEADER SIZES, IF APPLICABLE.
- SEE STANDARD DETAIL CATEGORY "11" SHEET(S) FOR INTERIOR TRIM DETAILS.
- SEE ARCHITECTURAL DETAIL SHEET "AD" FOR HOUSE SPECIFIC INTERIOR TRIM OPTION TABLE.
- ALL WINDOWS HAVE T-O 1/2" HEADER HEIGHT UNLESS OTHERWISE NOTED.
- ALL CASED OPENINGS AT T-11", UNLESS OTHERWISE NOTED.

GYPSON NOTES

AT GARAGE:
 GYPSON BOARD AT COMMON WALLS, CEILINGS, BEAM WRAPS AND SUPPORTS PER STANDARD DETAIL FA-10) FIRE ASSEMBLIES OR AS REQUIRED BY LOCAL CODE.

AT STAIRS:
 1/2" GYPSON BOARD AT UNDERSIDE OF STAIRS AND WALLS IN CLOSET

STEEL COLUMN SCHEDULE					
IDENTIFIER	STYLE	HEIGHT	OPTIONS	ENG. NUM.	REMARKS
C101	STANCHION - 3 IN SCHED 40	9'-0 11/16"	FBA	1057, 1133, 1128	
C102	STANCHION - 3 IN SCHED 40	9'-0 11/16"	FBA	1057, 1133, 1128	



FIRST FLOOR PLAN
 SCALE: 1/4" = 1'-0"

REV. NO.	DATE	REMARKS
1	08/04/16	TH - DRAWING ALIGNMENT
2	07/12/17	SLS - T-PLY CONVERSION PROJECT

SET NO. PALOO
 VERSION 03
 DRAWN BY
 DATE:
 OPTION

PALERMO
 DRAWING TITLE
 FIRST FLOOR PLAN

OPTION DESCRIPTION

SHEET NO. **A-7**

53

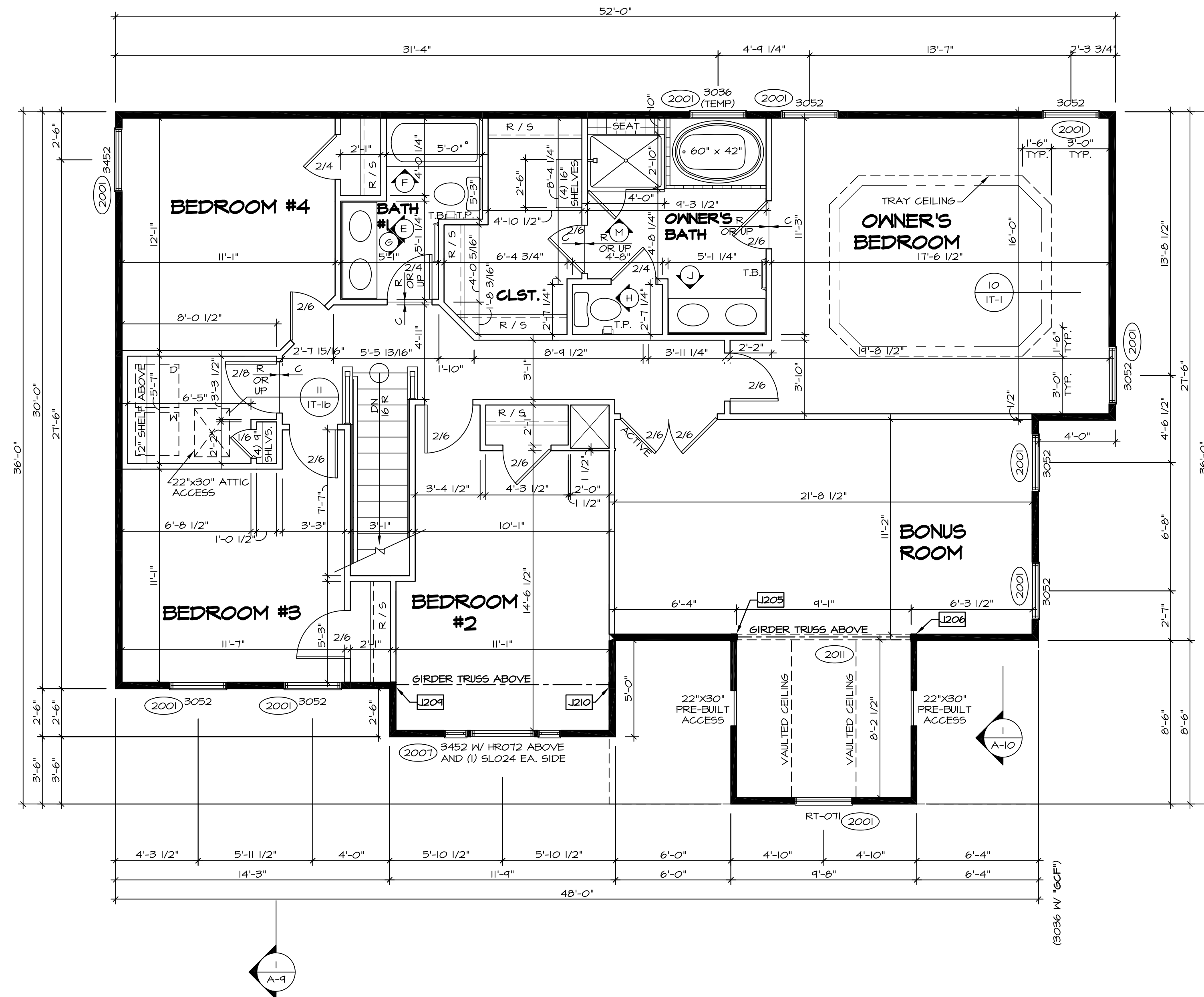
NVR
 NVR, Inc.
 Architectural Services
 5285 Washburn Circle
 Frederick, MD 21703

C:\NVR\Solves\PALERMO_PALOO_03\DCI-EW-S10\501155\Sheets\Lot_Spec\153 A-7 PLAN_LS.dwg 08/07/17 - 6:58 am

SECOND FLOOR JACK SCHEDULE				
IDENTIFIER	DESCRIPTION	OPTIONS	ENG. NUM.	REMARKS
J205	JACK - (3) 2X4 SFF STUD GRADE	MAY	2011	
J206	JACK - (3) 2X4 SFF STUD GRADE	MAY	2011	
J204	JACK - (2) 2X4 SFF#1	ELE	2011	
J210	JACK - (2) 2X4 SFF#1	ELE	2011	

LEGEND	
	BEARING WALL
	NON BEARING WALL
	INDICATES BEARING FROM POINT-LOAD ABOVE
	JACKS
	BEAM/HEADER
	PAD FOOTING
	STEEL COLUMN
	PORTAL FRAME
	JOIST/TRUSS
	LVL
	ENGINEERING PAGE NUMBER

- FLOOR PLAN NOTES**
- ALL HEADERS ARE (2) 2x6 w/ 2x4 WALLS OR (3) 2x6 w/ 2x6 WALLS, UNLESS OTHERWISE NOTED.
 - ALL HEADERS TO HAVE (1) 2x4 OR 2x6 JACK EACH END, UNLESS OTHERWISE NOTED.
 - ALL EXTERIOR WALLS TO BE 4" AND ALL INTERIOR WALLS TO BE 3 1/2", UNLESS OTHERWISE NOTED.
 - HATCHED AREAS INDICATE DROPPED CEILINGS. ALL DROPPED CEILINGS ARE 12" UNLESS OTHERWISE NOTED.
 - SEE "BRACED WALL PANEL DETAIL SHEET" FOR SPECIAL WALL FRAMING LOCATIONS AND HEADER SIZES, IF APPLICABLE.
 - SEE STANDARD DETAIL CATEGORY "IT" SHEET(S) FOR INTERIOR TRIM DETAILS.
 - SEE ARCHITECTURAL DETAIL SHEET "AD" FOR HOUSE SPECIFIC INTERIOR TRIM OPTION TABLE.
 - ALL WINDOWS HAVE T-0 1/2" HEADER HEIGHT UNLESS OTHERWISE NOTED.
 - ALL CASED OPENINGS AT T-11", UNLESS OTHERWISE NOTED.



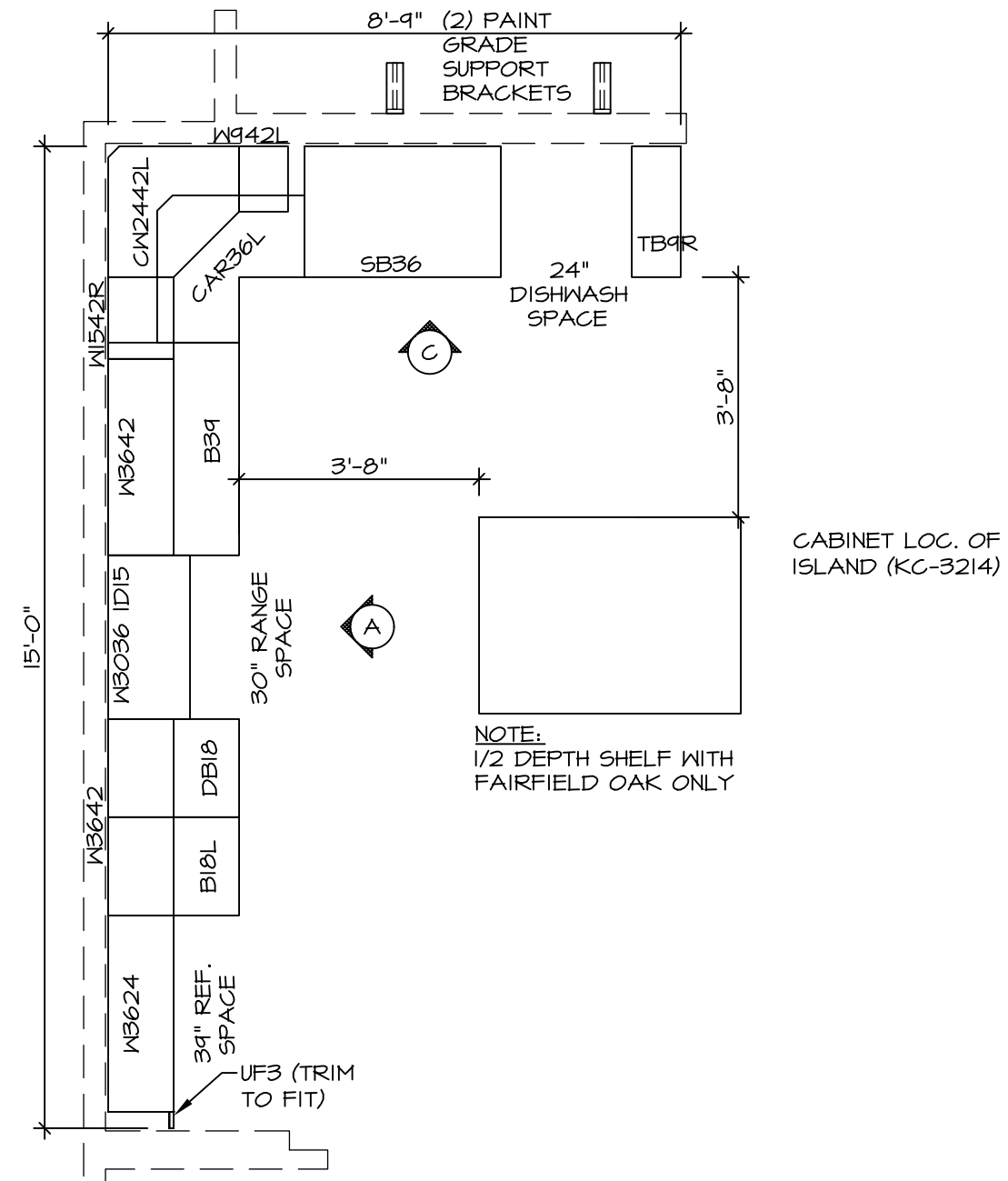
SECOND FLOOR PLAN
SCALE: 1/4" = 1'-0"

SHEET NO. A-8	MODEL PALERMO	SET NO. PALOO	REVISIONS	REMARKS
		VERSION 03	1 08/04/16 TH - DRAWING ALIGNMENT	
OPTION DESCRIPTION 60	DRAWING TITLE SECOND FLOOR PLAN	DRAWN BY	2 07/12/17 SLS - T-PLY CONVERSION PROJECT	
		DATE:		
		OPTION		
		OPTION		

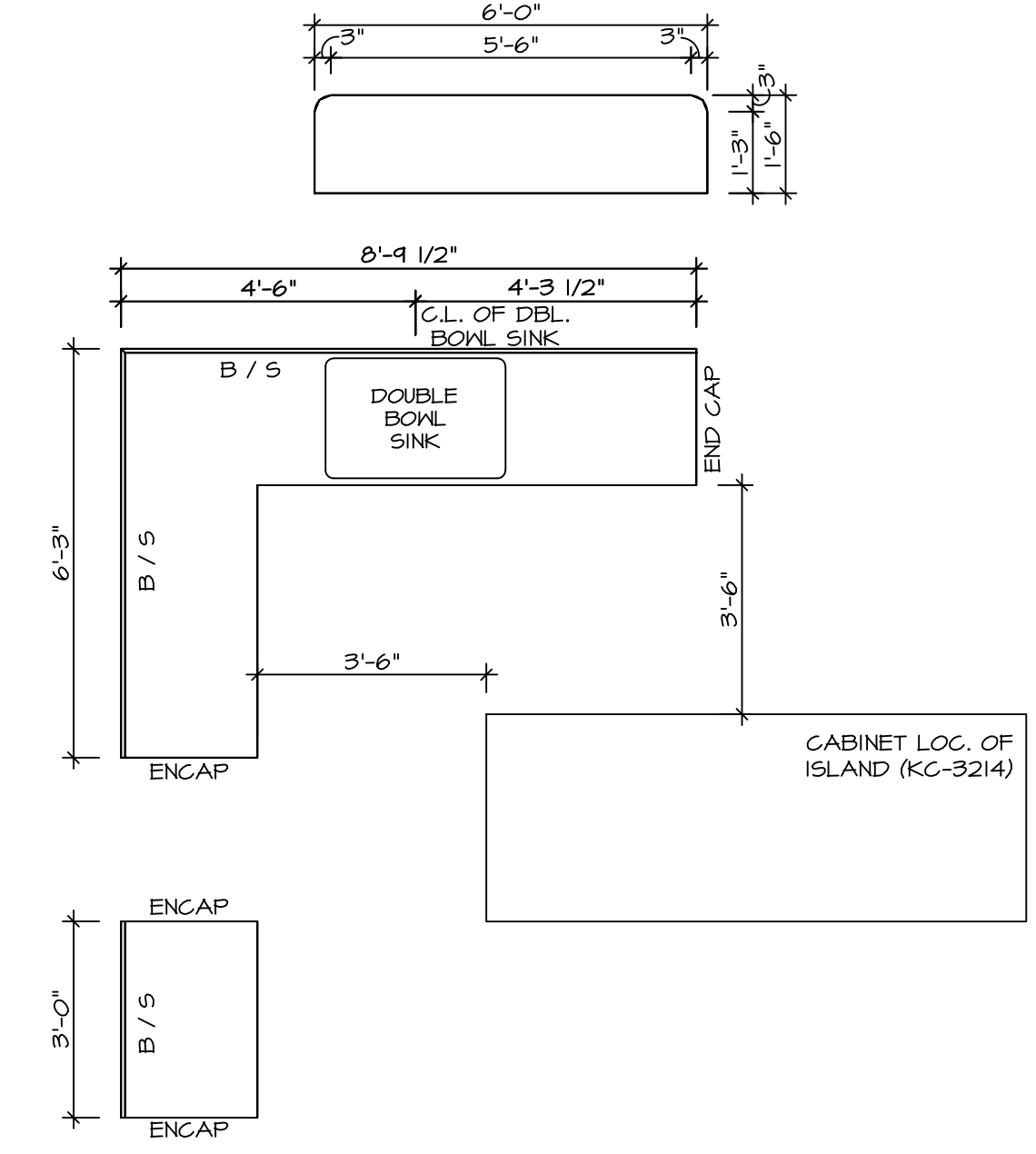
NVR, Inc., owner, expressly reserves its copyright in these plans. These plans are not to be reproduced, changed, copied, or otherwise used in any way without the written consent of NVR, Inc.

NVR
NVR, Inc.
Architectural Services
100
5285 Washington Blvd.
Frederick, MD 21703

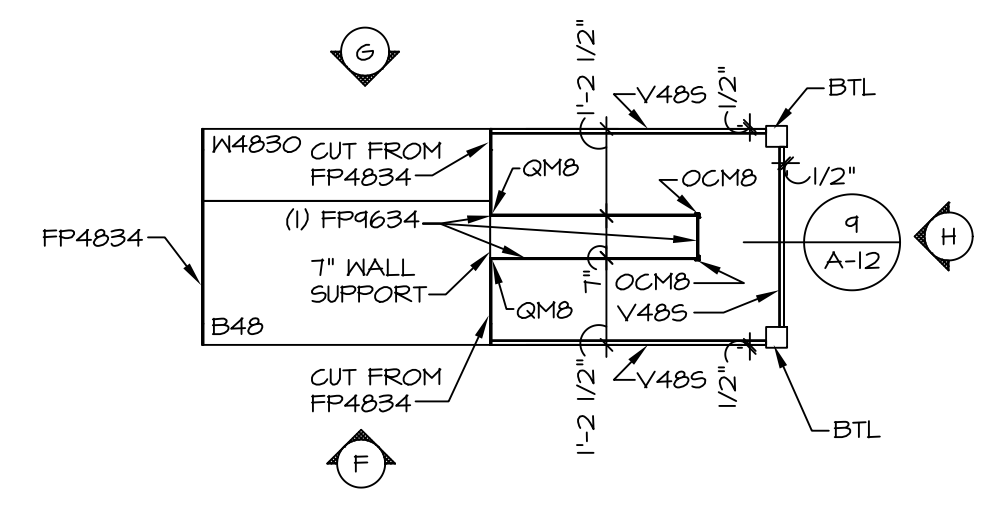
C:\NVR\Solves\PALERMO_PALOO_03\DC7-EW-S10\501155\Sheets\Lot_Spec\A_80 A-8 PLN2_LS.dwg 08/07/17 - 6:58 am



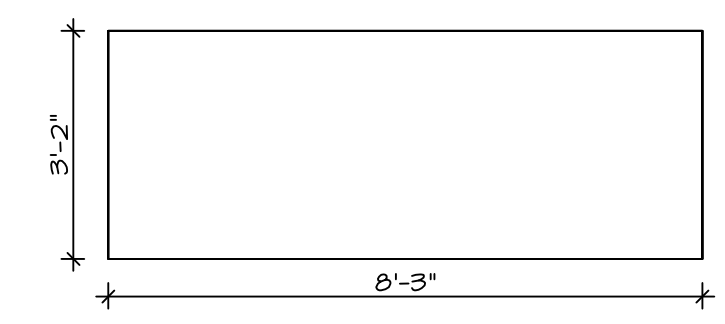
KITCHEN CABINET PLAN-KC-2862
 SCALE: 3/8" = 1'-0" STANDARD KITCHEN MORNING ROOM



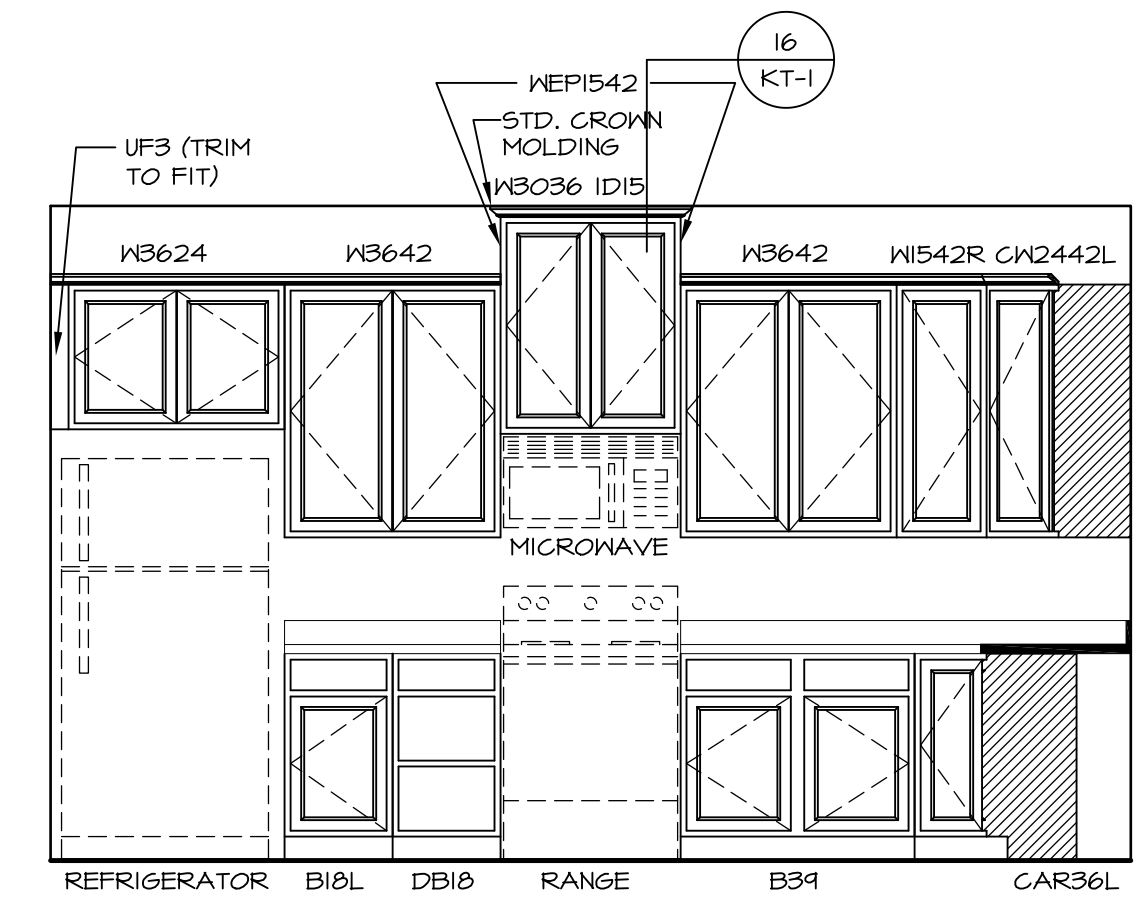
KITCHEN COUNTERTOP PLAN-KT-2862
 SCALE: 3/8" = 1'-0" STANDARD KITCHEN MORNING ROOM



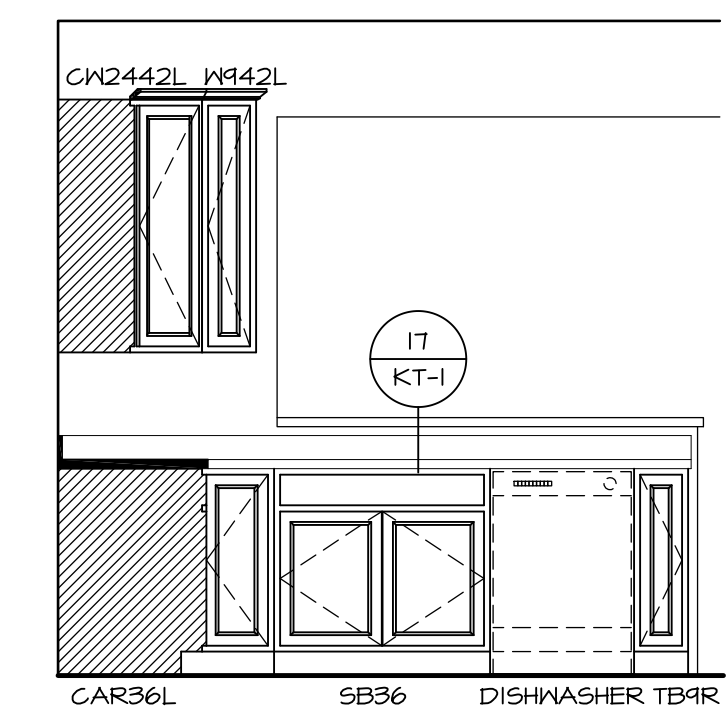
KITCHEN CABINET PLAN-KC-3214
 SCALE: 3/8" = 1'-0" GOURMET ISLAND



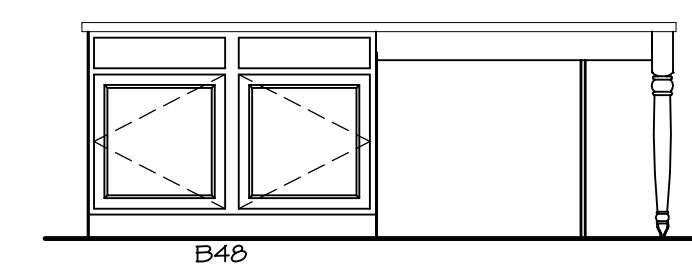
KITCHEN COUNTERTOP PLAN-KT-3214
 SCALE: 3/8" = 1'-0" GOURMET ISLAND



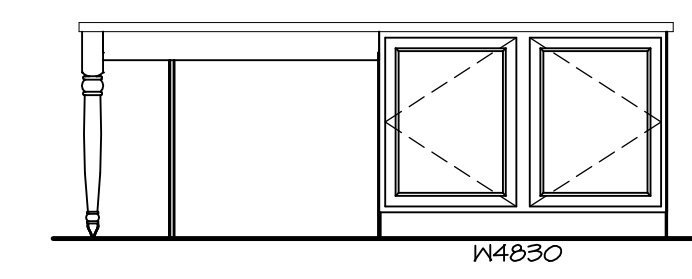
A KITCHEN ELEVATION
 SCALE: 3/8" = 1'-0"



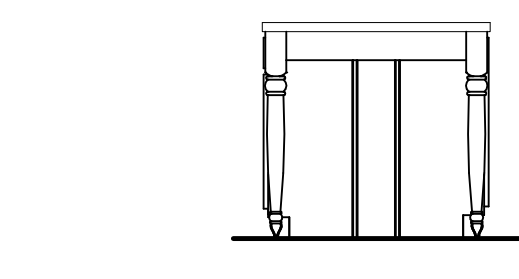
C KITCHEN ELEVATION
 SCALE: 3/8" = 1'-0"



F KITCHEN ELEVATION
 SCALE: 3/8" = 1'-0"



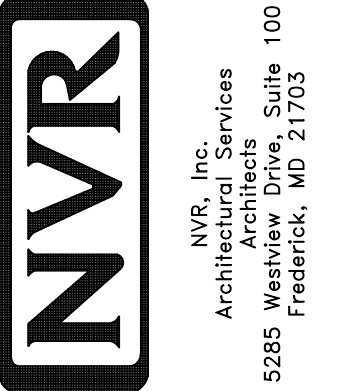
G KITCHEN ELEVATION
 SCALE: 3/8" = 1'-0"

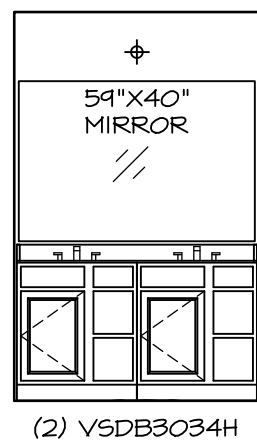


H KITCHEN ELEVATION
 SCALE: 3/8" = 1'-0"

SHEET NO. A-12	MODEL PALERMO	SET NO. PALOO	REVISIONS	REV. NO.	DATE	REMARKS
	DRAWING TITLE	VERSION 03	DRAWN BY			
OPTION DESCRIPTION	OPTION	DATE:				
70						

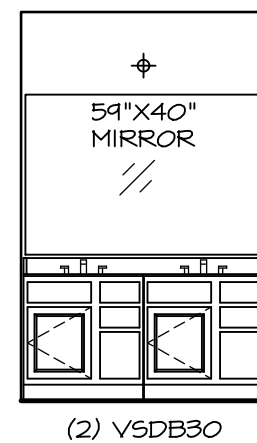
NVR, Inc., owner, expressly reserves its copyright in these plans. These plans are not to be reproduced, changed, copied in any way, or used for any other purpose without the written consent of NVR, Inc.





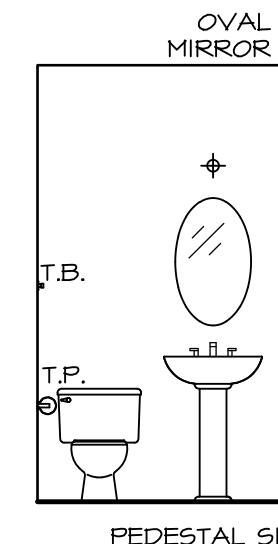
(2) V5DB3034H

J **OWNER'S BATH**
SCALE: 1/4" = 1'-0"



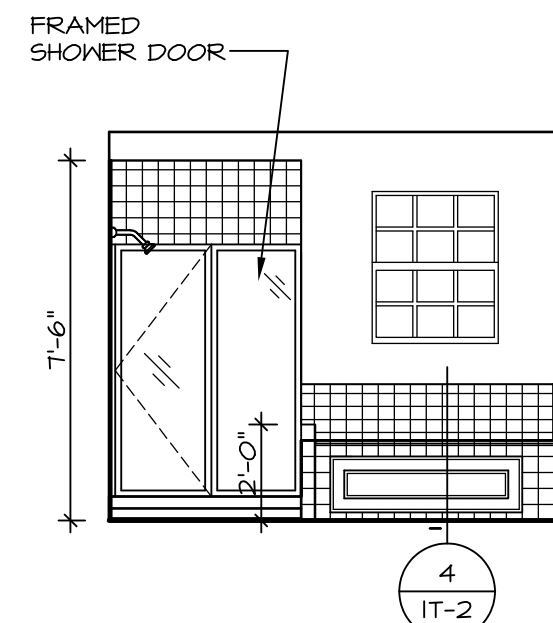
(2) V5DB30

E **BATH #1**
SCALE: 1/4" = 1'-0"



PEDESTAL SINK
(BY DIVISION)
WITH OVAL
MIRROR

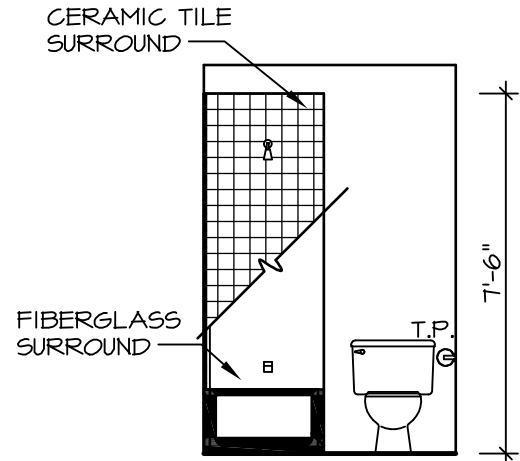
B **POWDER ROOM**
SCALE: 1/4" = 1'-0"



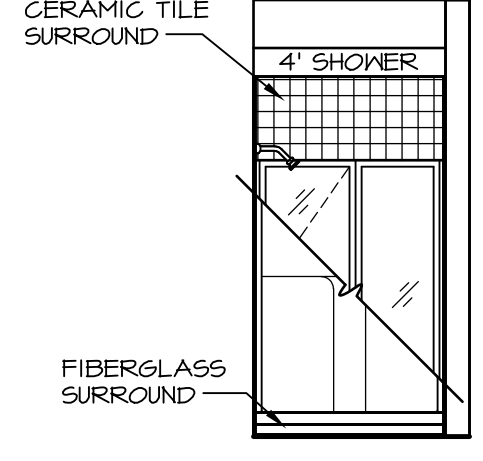
M **OWNER'S BATH**
SCALE: 1/4" = 1'-0"



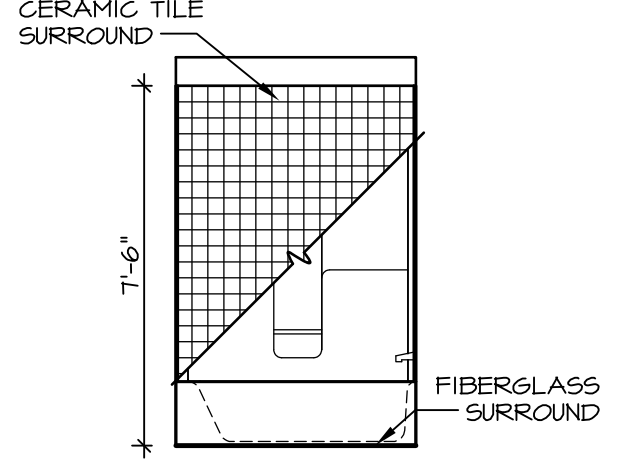
H **OWNER'S BATH**
SCALE: 1/4" = 1'-0"



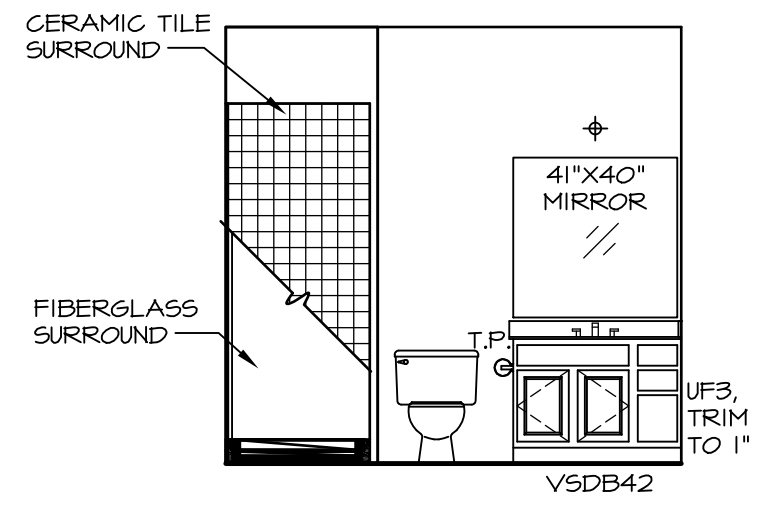
G **BATH #1**
SCALE: 1/4" = 1'-0"



D **FIRST FLOOR BATH**
SCALE: 1/4" = 1'-0"



F **BATH #1**
SCALE: 1/4" = 1'-0"



C **FIRST FLOOR BATH**
SCALE: 1/4" = 1'-0"

NOTES:

1. TEMPERED GLASS SHOWER ENCLOSURE WITH SWING DOOR OR OPTIONAL SLIDING DOOR BY DIVISION
2. TUB ACCESS PANELS PROVIDED AS NEEDED, ALL MATERIALS BY DIVISION
3. REFER TO SHEET IT-2 FOR TUB AND SHOWER DETAILS.
4. ALL V5DB24-42 DRAWERS TO BE SET ON RIGHT HAND.
5. BATH ELEVATIONS ARE SHOWN PER PLAN.

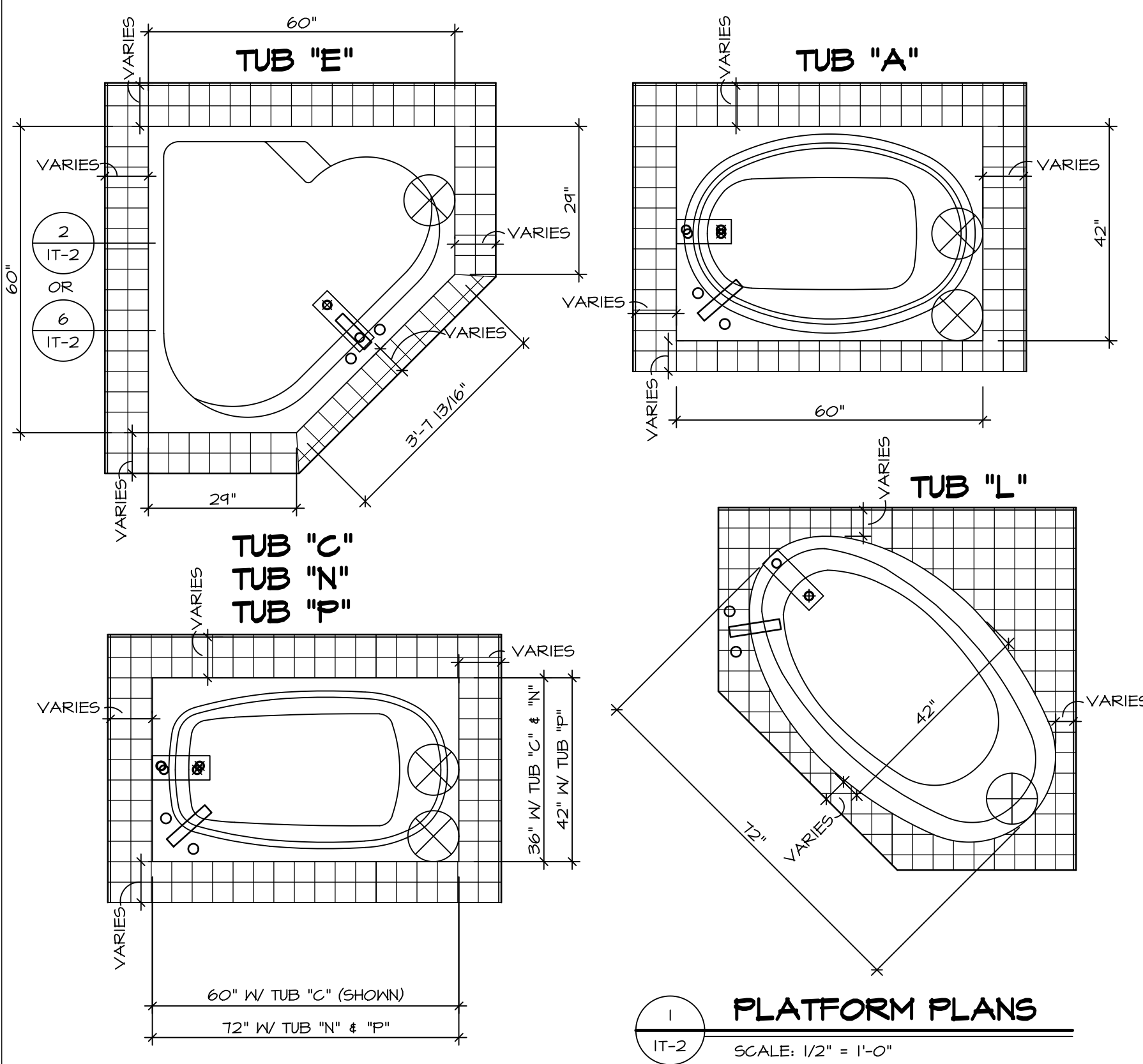
REV. NO.	DATE	REMARKS
1	08/04/16	TM - DRAWING ALIGNMENT

REV. NO.	DATE	REMARKS
1	08/04/16	TM - DRAWING ALIGNMENT

NVR, Inc., owner, expressly reserves its copyright in these plans. These plans are not to be reproduced, changed, copied in any way, or any part thereof, nor are they to be assigned to any other person without the written consent of NVR, Inc.

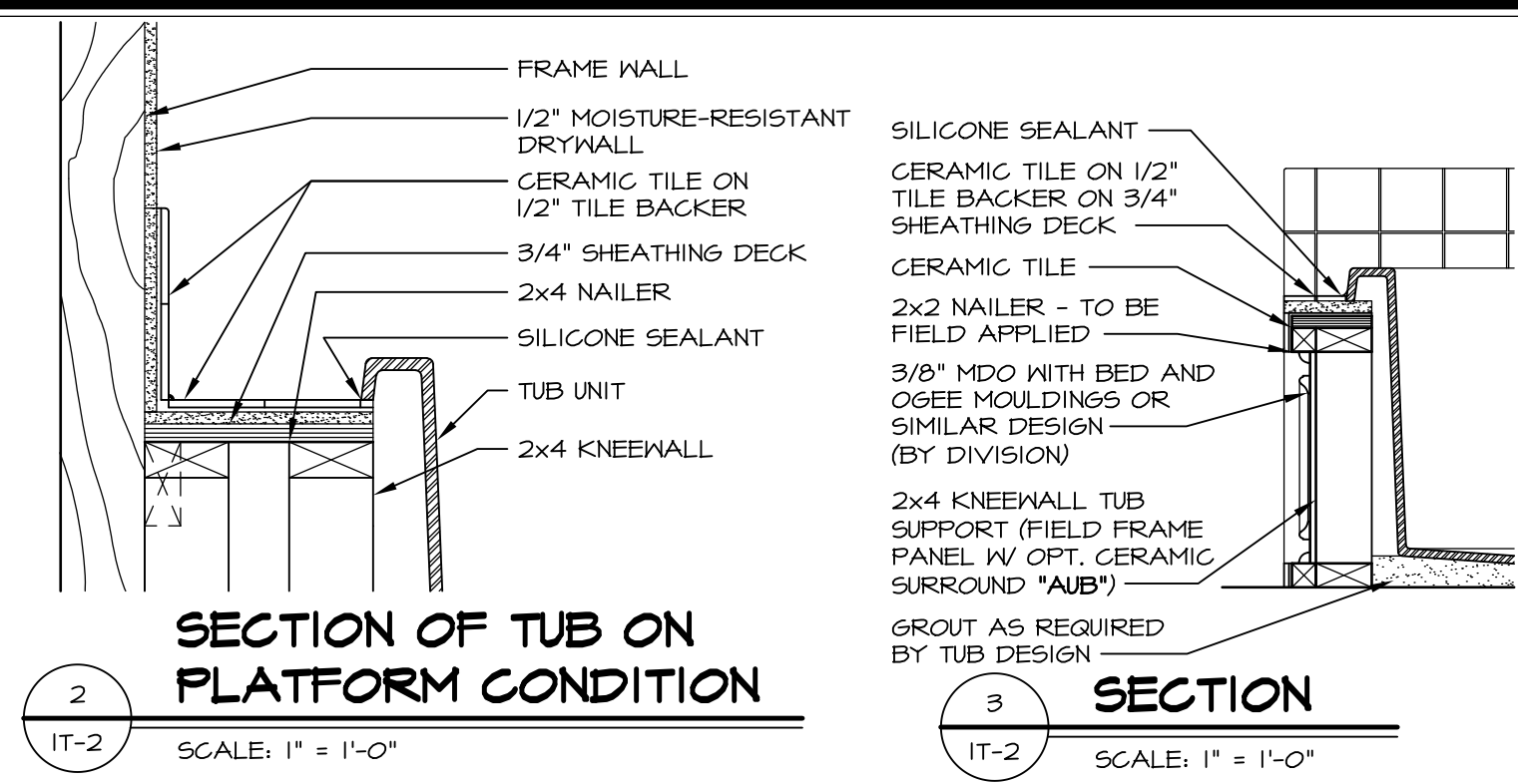
NVR
NVR, Inc.
Architectural Services
Architects
5285 Westover Hills, Suite 100
Frederick, MD 21703

SHEET NO. A-13	MODEL PALERMO	SET NO. FALOO	VERSION 03
DRAWING TITLE BATH ELEVATIONS	DRAWN BY	DATE:	OPTION
OPTION DESCRIPTION			
72			

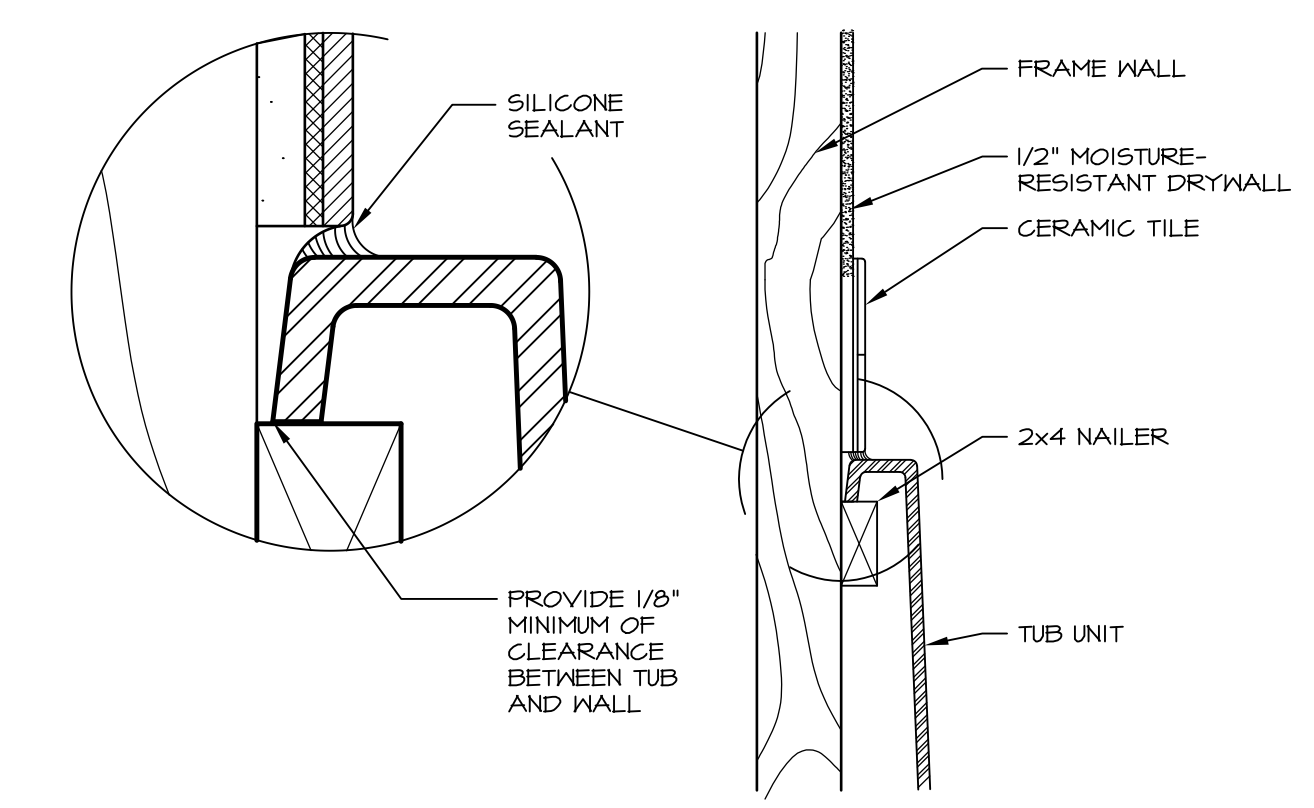


1 PLATFORM PLANS
SCALE: 1/2" = 1'-0"

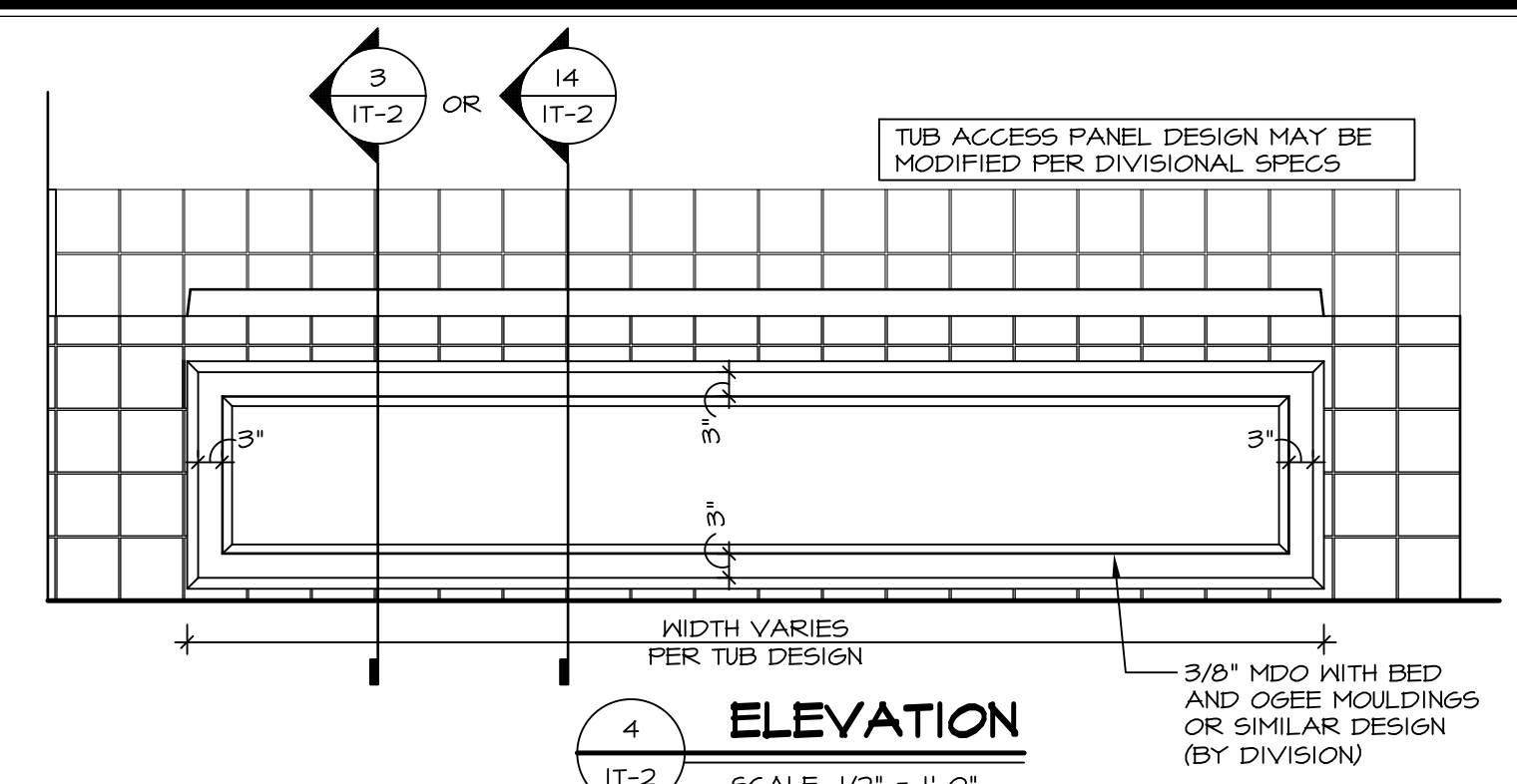
TUB	MANUF.	HEIGHT	WIDTH	LENGTH	TUB DECK PANEL HEIGHT
"A"	KOHLER/STERLING	18 3/4"	42"	60"	17 1/8"
"C"	KOHLER/STERLING	18 3/4"	36"	60"	17 1/8"
"E"	KOHLER/STERLING	19 1/2"	60"	60"	17 7/8"
"L"	KOHLER/STERLING	18 1/2"	42"	72"	16 7/8"
"N"	KOHLER/STERLING	18 3/4"	36"	72"	17 1/8"
"P"	KOHLER/STERLING	18 3/4"	42"	72"	17 1/8"



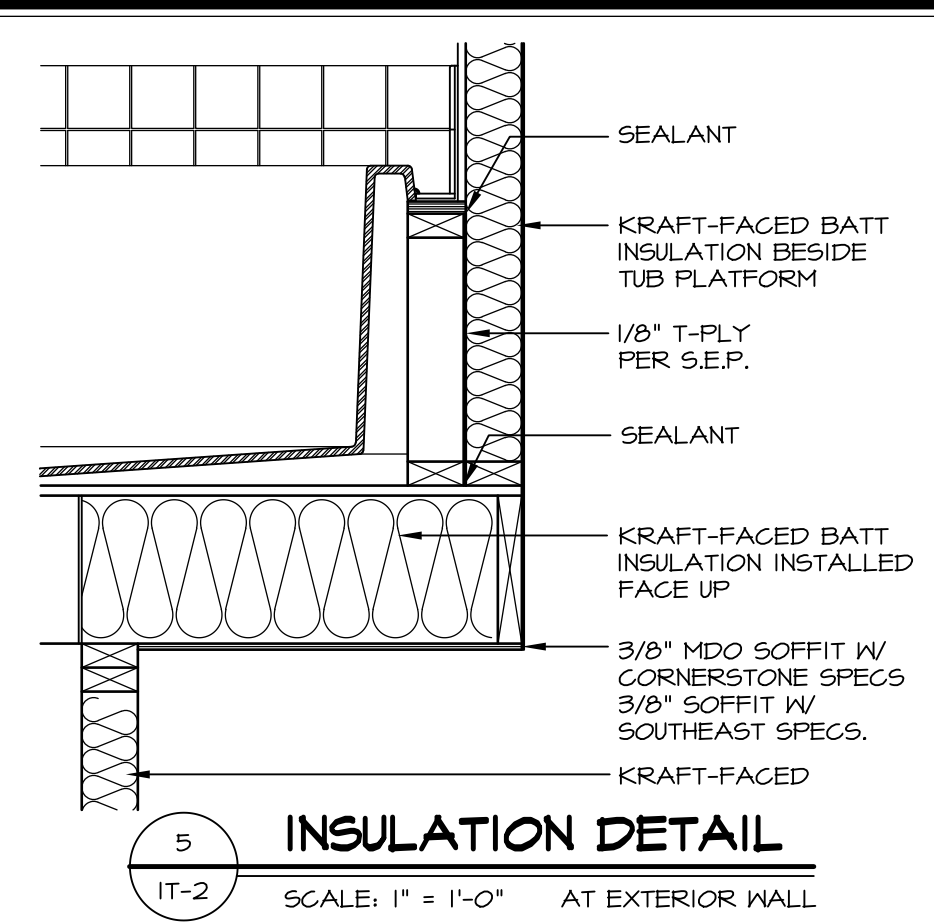
2 SECTION OF TUB ON PLATFORM CONDITION
SCALE: 1" = 1'-0"



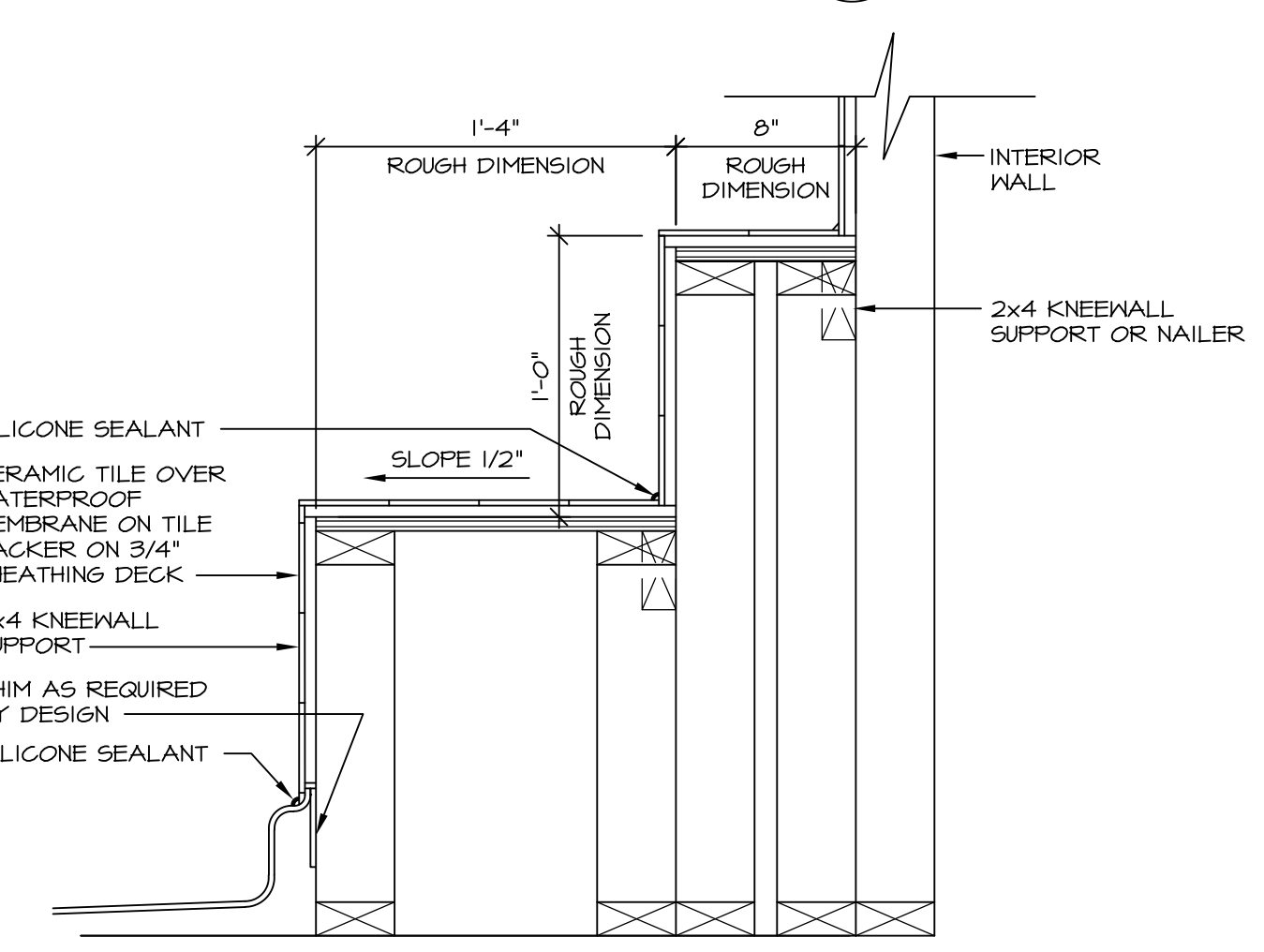
3 SECTION OF TUB TO WALL CONDITION
SCALE: 1 1/2" = 1'-0"



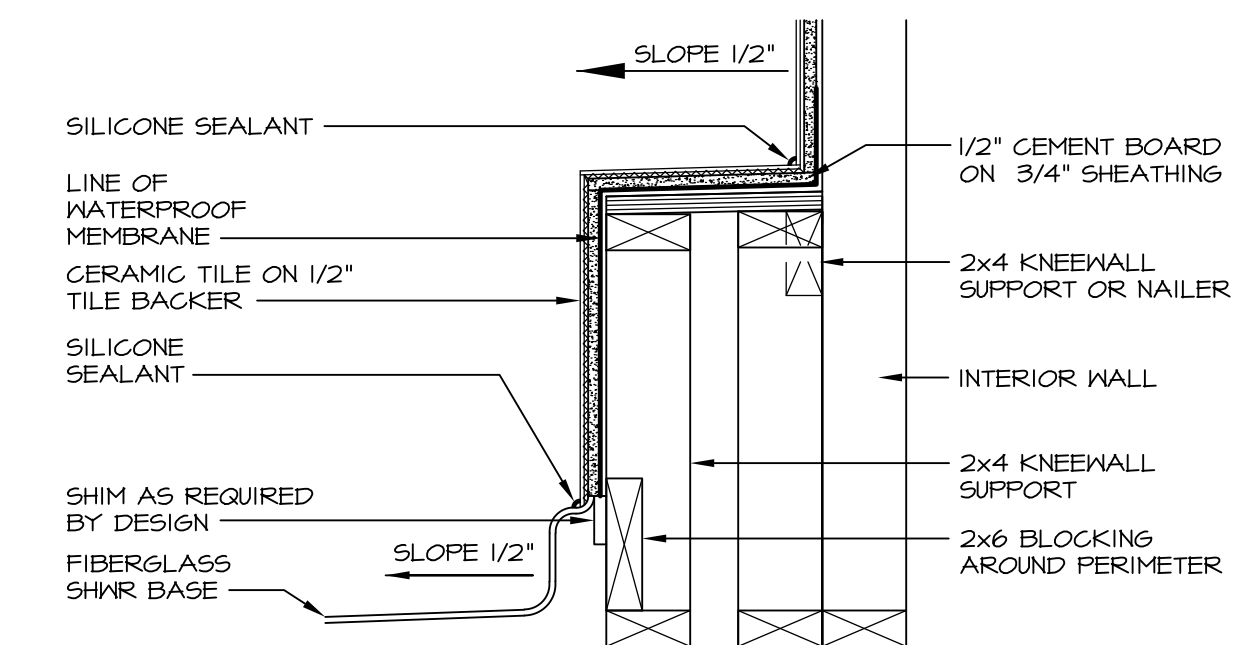
4 ELEVATION
SCALE: 1/2" = 1'-0"



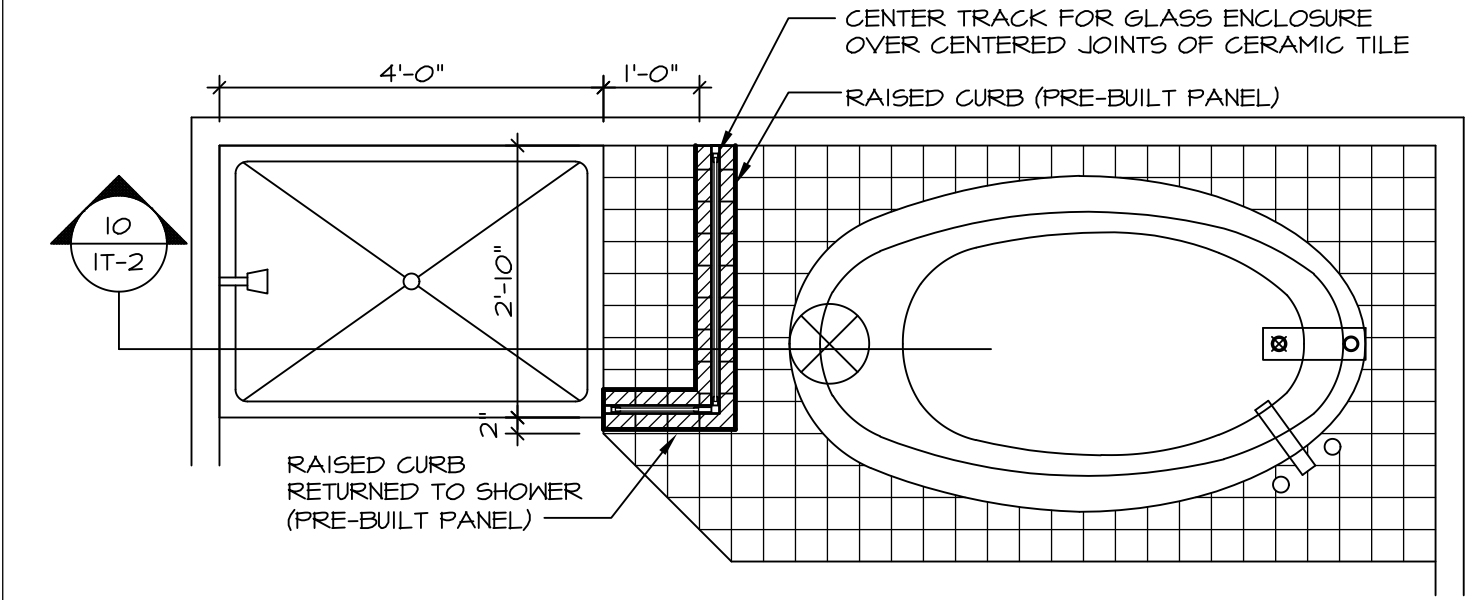
5 INSULATION DETAIL
SCALE: 1" = 1'-0" AT EXTERIOR WALL



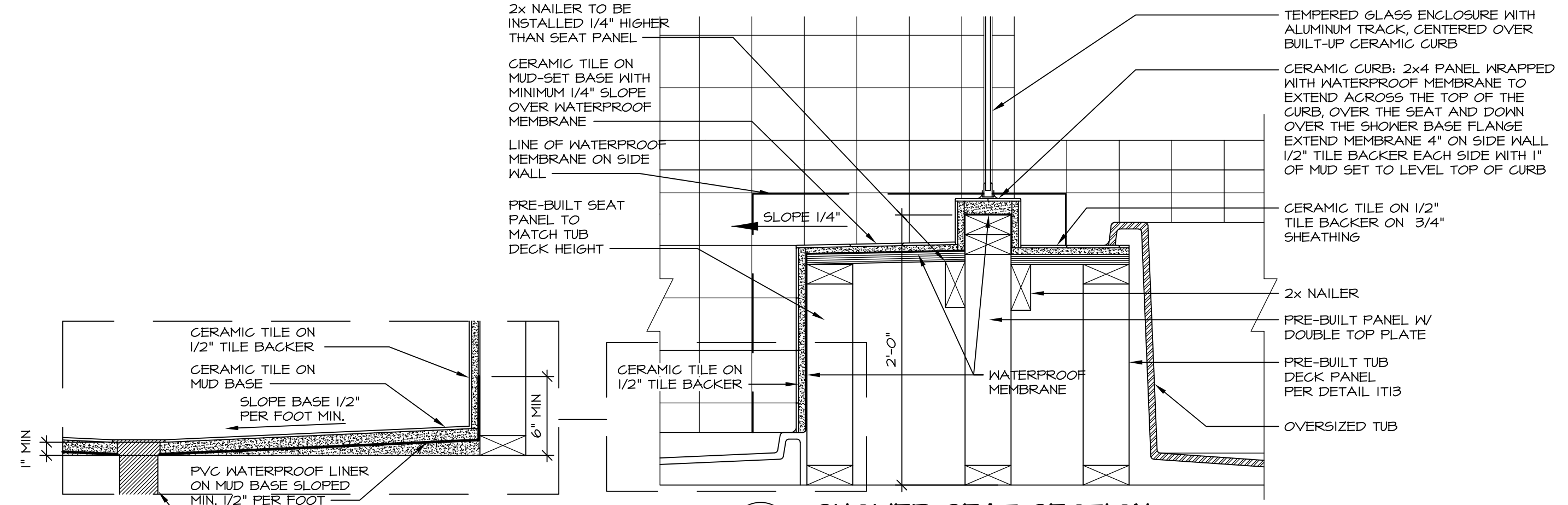
6 SECTION OF SHOWER SEAT AND SHELF
SCALE: 1 1/2" = 1'-0"



7 SECTION OF SHOWER SEAT
SCALE: 1-1/2" = 1'-0" FIBERGLASS SHOWER BASE



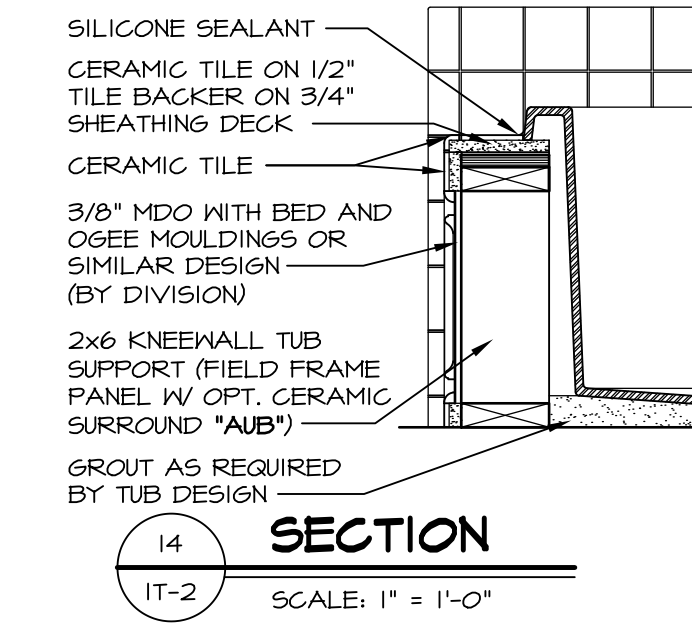
8 SHOWER SEAT PLAN / DETAIL
SCALE: 1/2" = 1'-0"



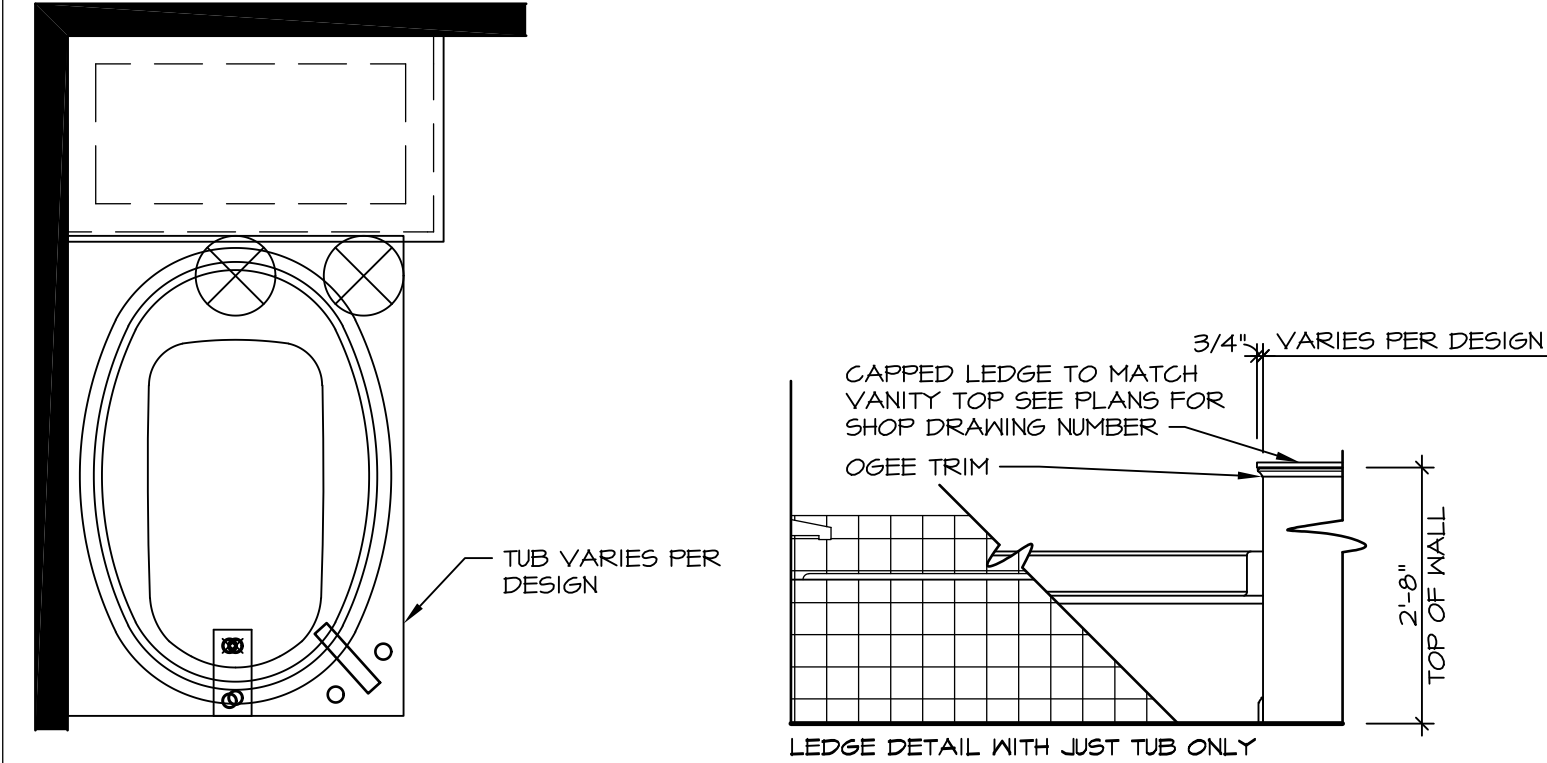
9 SHOWER SEAT SECTION
SCALE: 1-1/2" = 1'-0"



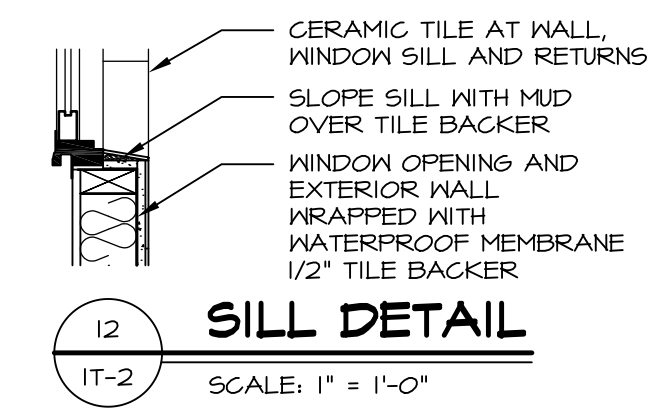
10 ALTERNATE SHOWER PAN DETAIL



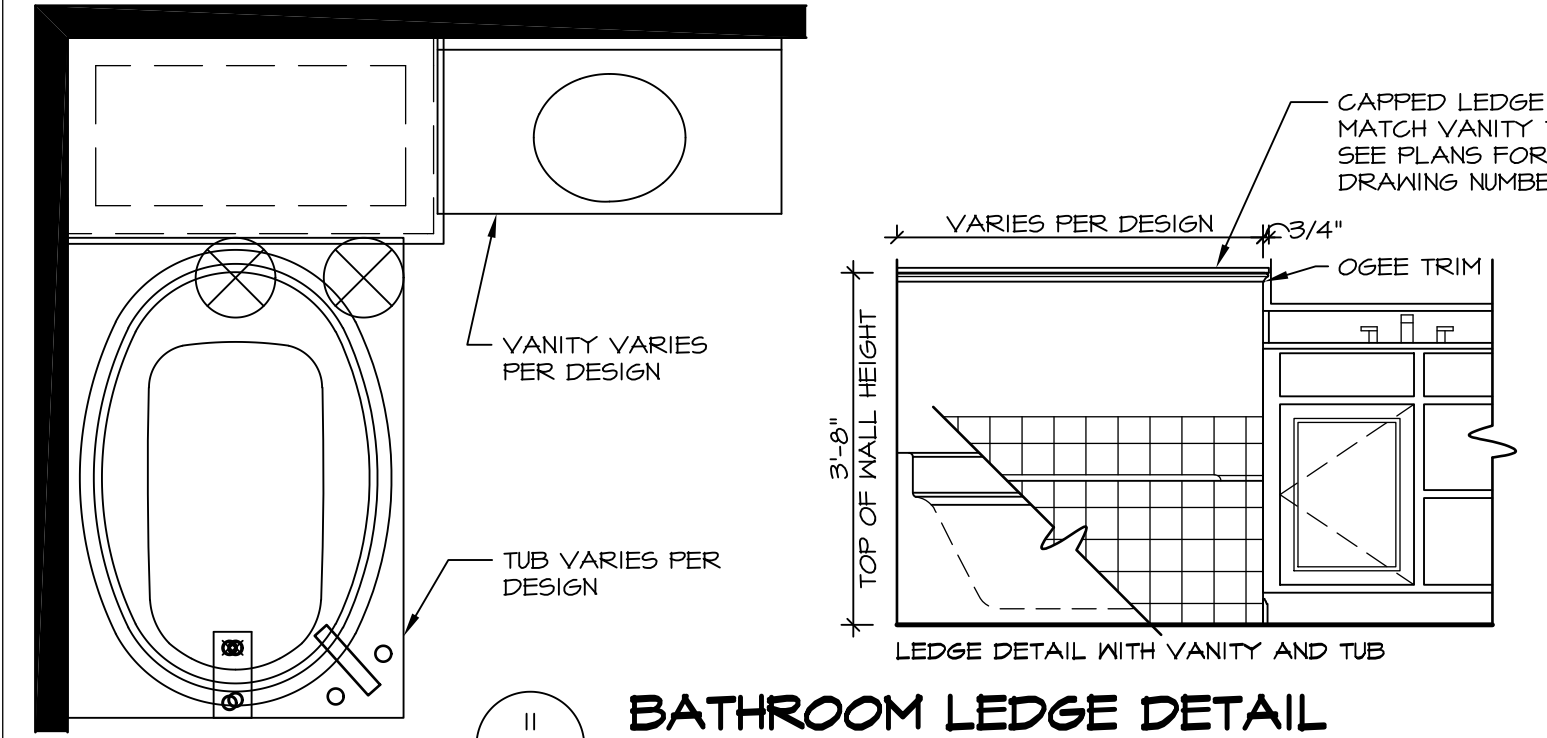
11 SECTION
SCALE: 1" = 1'-0"



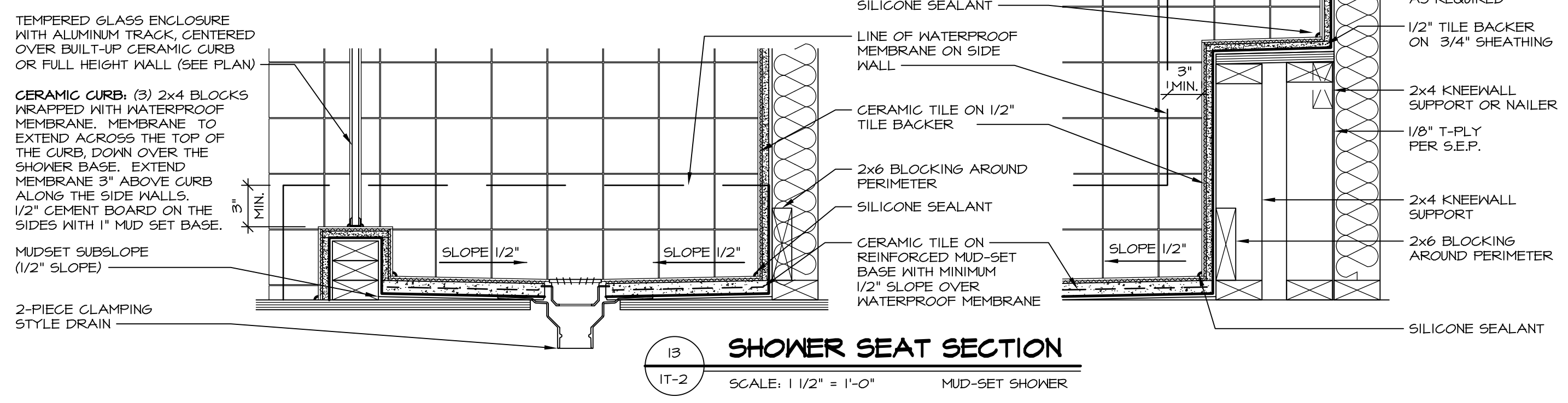
12 BATHROOM LEDGE DETAIL
SCALE: 1/2" = 1'-0"



13 SILL DETAIL
SCALE: 1" = 1'-0"



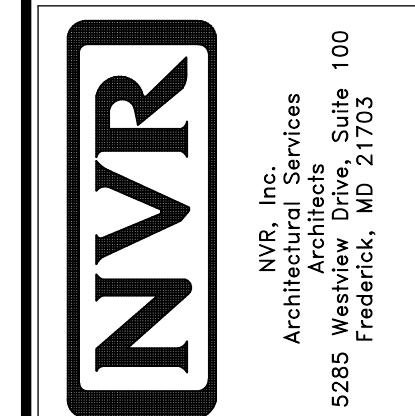
14 BATHROOM LEDGE DETAIL
SCALE: 1/2" = 1'-0"



15 SHOWER SEAT SECTION
SCALE: 1 1/2" = 1'-0" MUD-SET SHOWER

REVISIONS
REV. NO. DATE
5/11/17 EBP - REVISED DETAIL 1 AND 11 TO REMOVE TUB ACCESS PANEL REF. (CBS #5 8414)

REMARKS
NVR, Inc., owner, expressly reserves its common law copyright and other property rights in these plans. These plans are not to be copied, reproduced, or otherwise used in any way without the written consent of NVR, Inc.



SET NO. NVR
VERSION
DRAWN BY
DATE:
OPTION

MODEL STANDARD DETAILS
DRAWING TITLE INTERIOR TRIM DETAILS
BATH DETAILS
OPTION DESCRIPTION

SHEET NO. IT-2

C:\Users\epeterson\AppData\Local\Temp\XpPublish_4544\IT2.dwg 05/11/17 - 7:12 am