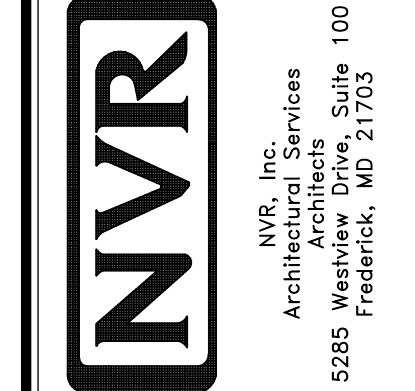


1  
 A-5      **PLUMBING PLAN**  
 SCALE: 1/4" = 1'-0"

SHEET NO. **A-5**  
 MODEL **CAROLINA PLACE**  
 DRAWING TITLE **PLUMBING PLAN**  
 OPTION DESCRIPTION **36**



SET NO. **CNPOO**  
 VERSION **02**  
 DRAWN BY  
 DATE:  
 OPTION

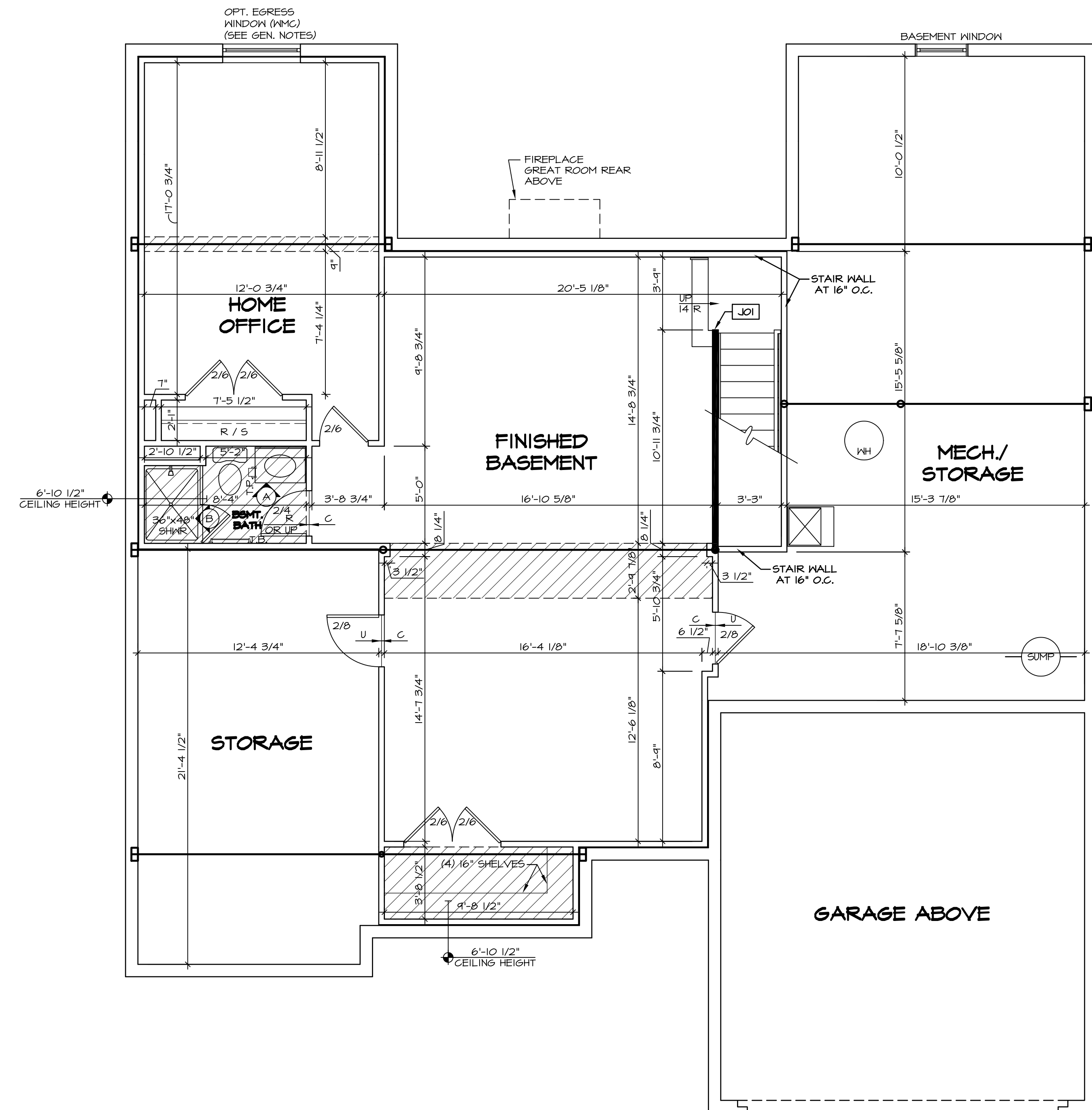
NVR, Inc., owner, expressly reserves its common law copyright and other property rights in these plans. These plans are not to be reproduced, stored in a retrieval system, or transmitted in any form or by any means, nor are they to be assigned to any third party, without first obtaining the expressed written consent of NVR, Inc.

REV. NO.	DATE	REMARKS

BASEMENT JACK SCHEDULE				
IDENTIFIER	DESCRIPTION	OPTIONS	ENG. NUM.	REMARKS
J01	JACK - 2x4 SFF STUD GRADE		B016	

LEGEND	
	BEARING WALL
	NON BEARING WALL
	INDICATES BEARING FROM POINT-LOAD ABOVE
	JACKS
	BEAM/HEADER
	PAD FOOTING
	STEEL COLUMN
	PORTAL FRAME
	JOIST/TRUSS
	LVL
	ENGINEERING PAGE NUMBER

SEE FC DETAILS FOR FRAMING CONNECTORS



- FLOOR PLAN NOTES**
- ALL HEADERS ARE (2) 2x6 w/ 2x4 WALLS OR (3) 2x6 w/ 2x6 WALLS, UNLESS OTHERWISE NOTED.
  - ALL HEADERS TO HAVE (1) 2x4 OR 2x6 JACK EACH END, UNLESS OTHERWISE NOTED.
  - ALL EXTERIOR WALLS TO BE 4" AND ALL INTERIOR WALLS TO BE 3 1/2", UNLESS OTHERWISE NOTED.
  - HATCHED AREAS INDICATE DROPPED CEILINGS. ALL DROPPED CEILINGS ARE 12" UNLESS OTHERWISE NOTED.
  - SEE 'BRACED WALL PANEL DETAIL SHEET' FOR SPECIAL WALL FRAMING LOCATIONS AND HEADER SIZES, IF APPLICABLE.
  - SEE STANDARD DETAIL CATEGORY 'IT' SHEET(S) FOR INTERIOR TRIM DETAILS.
  - SEE ARCHITECTURAL DETAIL SHEET 'AD' FOR HOUSE SPECIFIC INTERIOR TRIM OPTION TABLE.
  - ALL WINDOWS HAVE 7'-0 1/2" HEADER HEIGHT UNLESS OTHERWISE NOTED.

- GYPSUM NOTES**
- AT GARAGE:  
GYPSUM BOARD AT COMMON WALLS, CEILINGS, BEAM WRAPS AND SUPPORTS PER STANDARD DETAIL FA-1(b) FIRE ASSEMBLIES OR AS REQUIRED BY LOCAL CODE.
- AT STAIRS:  
1/2" GYPSUM BOARD AT UNDERSIDE OF STAIRS AND WALLS IN CLOSET

**BASEMENT FLOOR PLAN**  
SCALE: 1/4" = 1'-0"

SHEET NO. <b>A-6</b>	MODEL <b>CAROLINA PLACE</b>	SET NO. CNP00	DATE: OPTION FEA
	DRAWING TITLE BASEMENT FLOOR PLAN	VERSION 02	
40	OPTION DESCRIPTION FULL BASEMENT FOUNDATION	NVR, Inc. Architectural Services 5285 West... Suite 100 Frederick, MD 21703	
	<p><b>NVR</b></p> <p>NVR, Inc. reserves its common law copyright and other property rights in these plans. These plans are not to be reproduced, copied, or otherwise used in any way without the expressed written consent of NVR, Inc.</p>		
<p>REV. NO.   DATE   DESCRIPTION</p> <p>1   08/04/16   N-DRAWING ALIGNMENT</p>			
<p>REMARKS</p>			

C:\NVR\Solves\CAROLINA\_PLACE\_CNP00\_02\DC1-EW-S102\436868\Sheets\01\_Specific\A-6 A-6 BSM\_LS.dwg 05/23/17 - 4:30 am

**LEGEND**

- BEARING WALL
- NON BEARING WALL
- INDICATES BEARING FROM POINT-LOAD ABOVE
- JACKS
- BEAM/HEADER
- PAD FOOTING
- STEEL COLUMN
- PORTAL FRAME
- JOIST/TRUSS
- LVL
- ENGINEERING PAGE NUMBER

SEE FC DETAILS FOR FRAMING CONNECTORS

- FLOOR PLAN NOTES**
1. ALL HEADERS ARE (2) 2x6 W/ 2x4 WALLS OR (3) 2x6 W/ 2x6 WALLS, UNLESS OTHERWISE NOTED.
  2. ALL HEADERS TO HAVE (1) 2x4 OR 2x6 JACK EACH END, UNLESS OTHERWISE NOTED.
  3. ALL EXTERIOR WALLS TO BE 4" AND ALL INTERIOR WALLS TO BE 3 1/2", UNLESS OTHERWISE NOTED.
  4. HATCHED AREAS INDICATE DROPPED CEILINGS. ALL DROPPED CEILINGS ARE 12" UNLESS OTHERWISE NOTED. SEE "BRACED WALL PANEL DETAIL SHEET" FOR SPECIAL WALL FRAMING LOCATIONS AND HEADER SIZES, IF APPLICABLE.
  5. SEE STANDARD DETAIL CATEGORY "IT" SHEET(S) FOR INTERIOR TRIM DETAILS.
  6. SEE ARCHITECTURAL DETAIL SHEET "AD" FOR HOUSE SPECIFIC INTERIOR TRIM OPTION TABLE.
  7. ALL WINDOWS HAVE T-0 1/2" HEADER HEIGHT UNLESS OTHERWISE NOTED.

- GYPSUM NOTES**
- AT GARAGE:  
GYPSUM BOARD AT COMMON WALLS, CEILING, BEAM WRAPS AND SUPPORTS PER STANDARD DETAIL FA-1(b) FIRE ASSEMBLIES OR AS REQUIRED BY LOCAL CODE.
- AT STAIRS:  
1/2" GYPSUM BOARD AT UNDERSIDE OF STAIRS AND WALLS IN CLOSET

**LVL PLY TO PLY FASTENING SCHEDULE:**

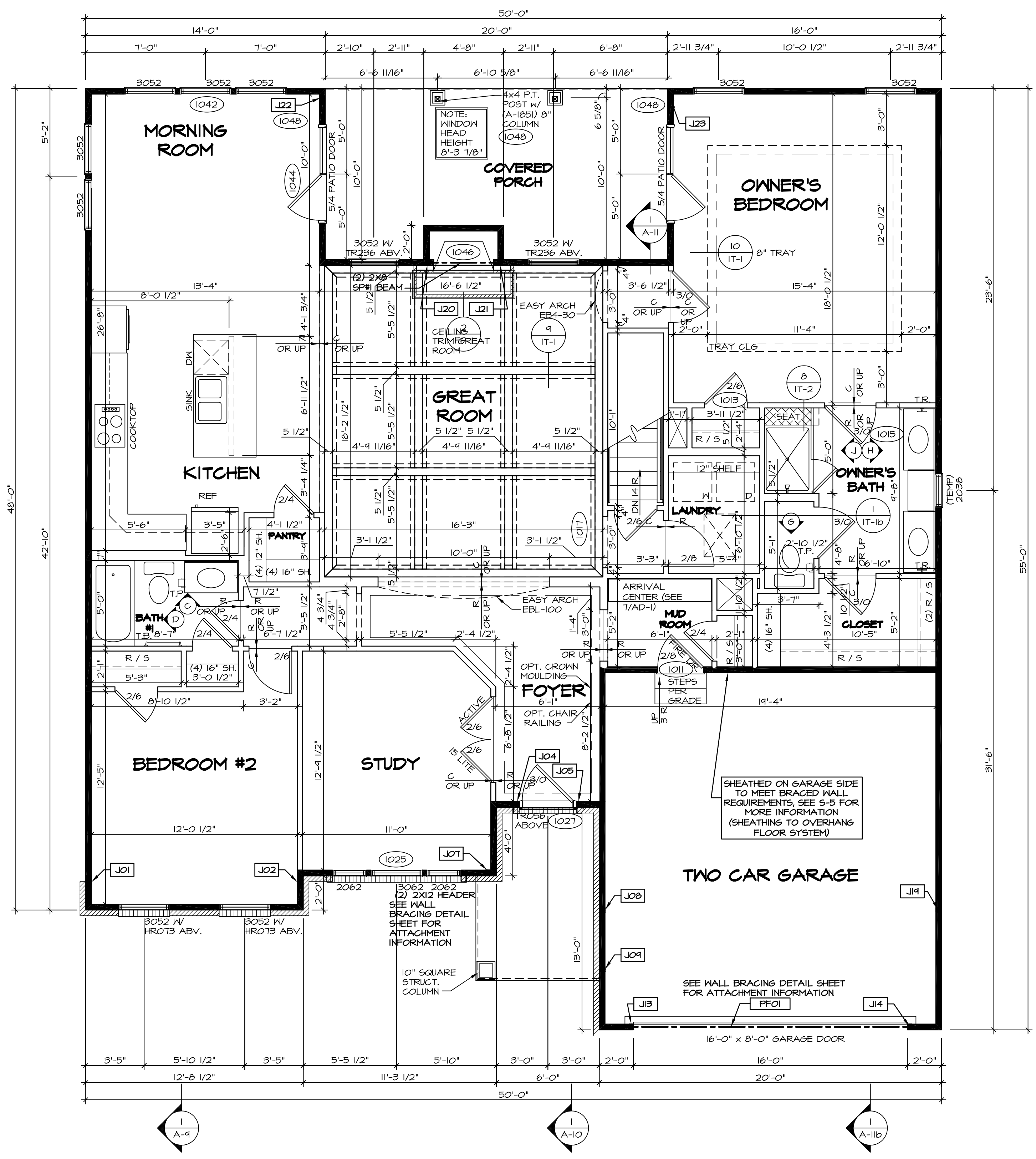
1.A - (2) PLY UP TO AND INCLUDING 11 7/8" TALL; FASTEN PLYS W/ (2) ROWS 16D NAILS AT 12" O.C.  
 2.A - (2) PLY 14" TO AND 18" TALL (INCLUSIVE); FASTEN PLYS W/ (3) ROWS 16D NAILS AT 12" O.C.  
 3.A - (2) PLY 20" TALL AND OVER; FASTEN PLYS W/ (4) ROWS 16D NAILS AT 12" O.C.  
 4.A - (3) PLY UP TO AND INCLUDING 11 7/8" TALL; FASTEN PLYS W/ (2) ROWS 16D NAILS AT 12" O.C. FROM EACH SIDE  
 5.A - (3) PLY 14" TO AND 18" TALL (INCLUSIVE); FASTEN PLYS W/ (3) ROWS 16D NAILS AT 12" O.C. FROM EACH SIDE  
 6.A - (3) PLY 20" TALL AND OVER; FASTEN PLYS W/ (4) ROWS 16D NAILS AT 12" O.C. FROM EACH SIDE

**FIRST FLOOR BEAM/HEADER SCHEDULE**

IDENTIFIER	DESCRIPTION	LENGTH	OPTIONS	ENG. NUM.	REMARKS
FF01	BEAM BUILT 2X12 - 2 PLY	14'-8"	6CB	1033	2-PLY, PORTAL FRAME

**FIRST FLOOR JACK SCHEDULE**

IDENTIFIER	DESCRIPTION	OPTIONS	ENG. NUM.	REMARKS
J01	JACK - (4) 2X4 SPH		1044	
J02	JACK - (4) 2X4 SPH		1044	
J04	JACK - (2) 2X4 SPF STUD GRADE		1027	
J05	JACK - (2) 2X4 SPF STUD GRADE		1027	
J07	JACK - (2) 2X4 SPF STUD GRADE	ELB	1031	
J08	JACK - (2) 2X4 SPF STUD GRADE	ELB	1044	
J09	JACK - (2) 2X4 SPF STUD GRADE	ELB	1031	
J13	JACK - (2) 2X4 SPF STUD GRADE	6CB	1033	
J14	JACK - (2) 2X4 SPF STUD GRADE	6CB	1033	
J14	JACK - (2) 2X4 SPF STUD GRADE	6CB, ELB, ELK	1044	
J20	JACK - (2) 2X4 SPF STUD GRADE	L66	1046	
J21	JACK - (2) 2X4 SPF STUD GRADE	L66	1046	
J23	JACK - (3) 2X4 SPF STUD GRADE	ECY, EFE	1041	



**FIRST FLOOR PLAN**  
SCALE: 1/4" = 1'-0"

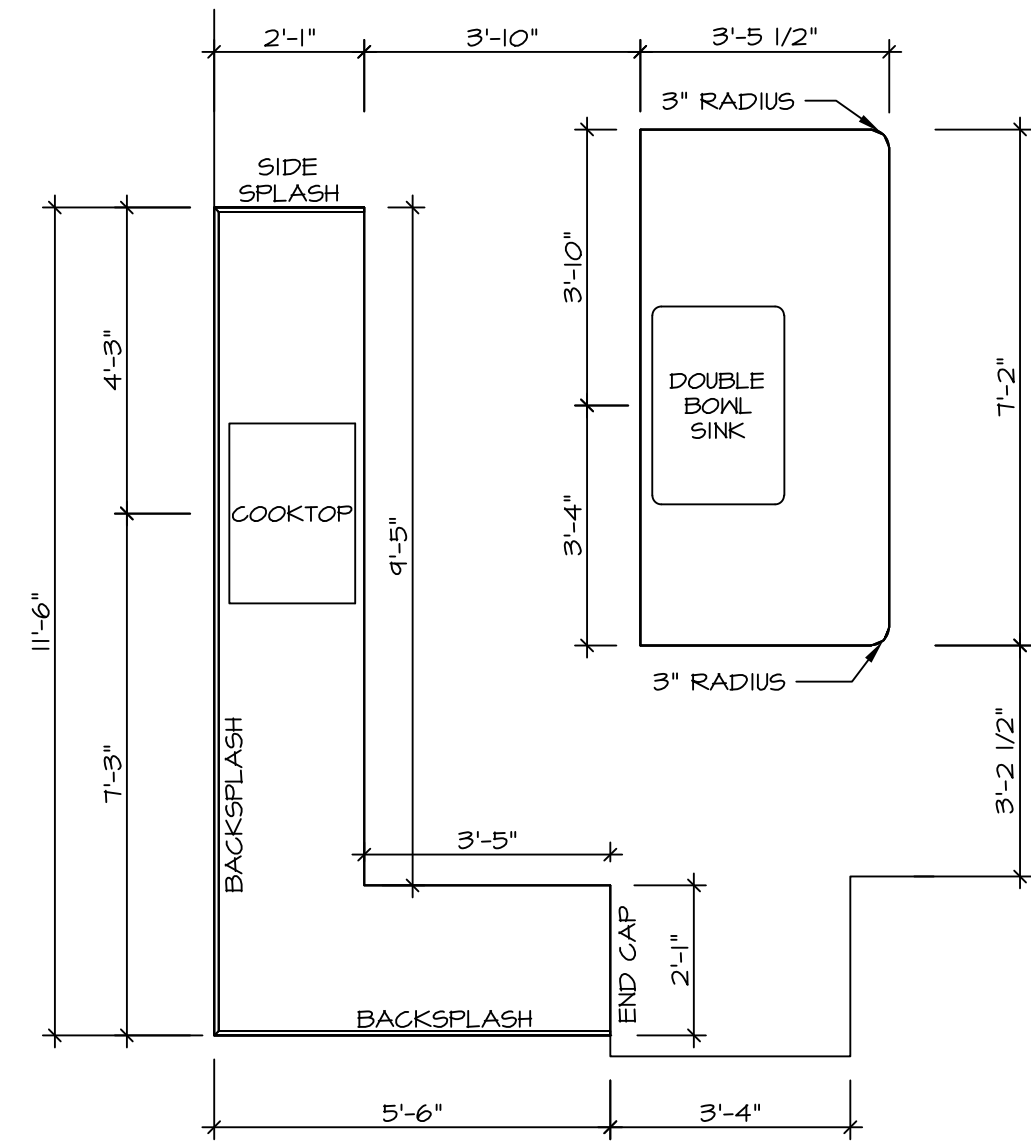
REVISIONS

REV. NO.	DATE	DESCRIPTION
1	08/04/16	N-DRAWING ALIGNMENT

REMARKS

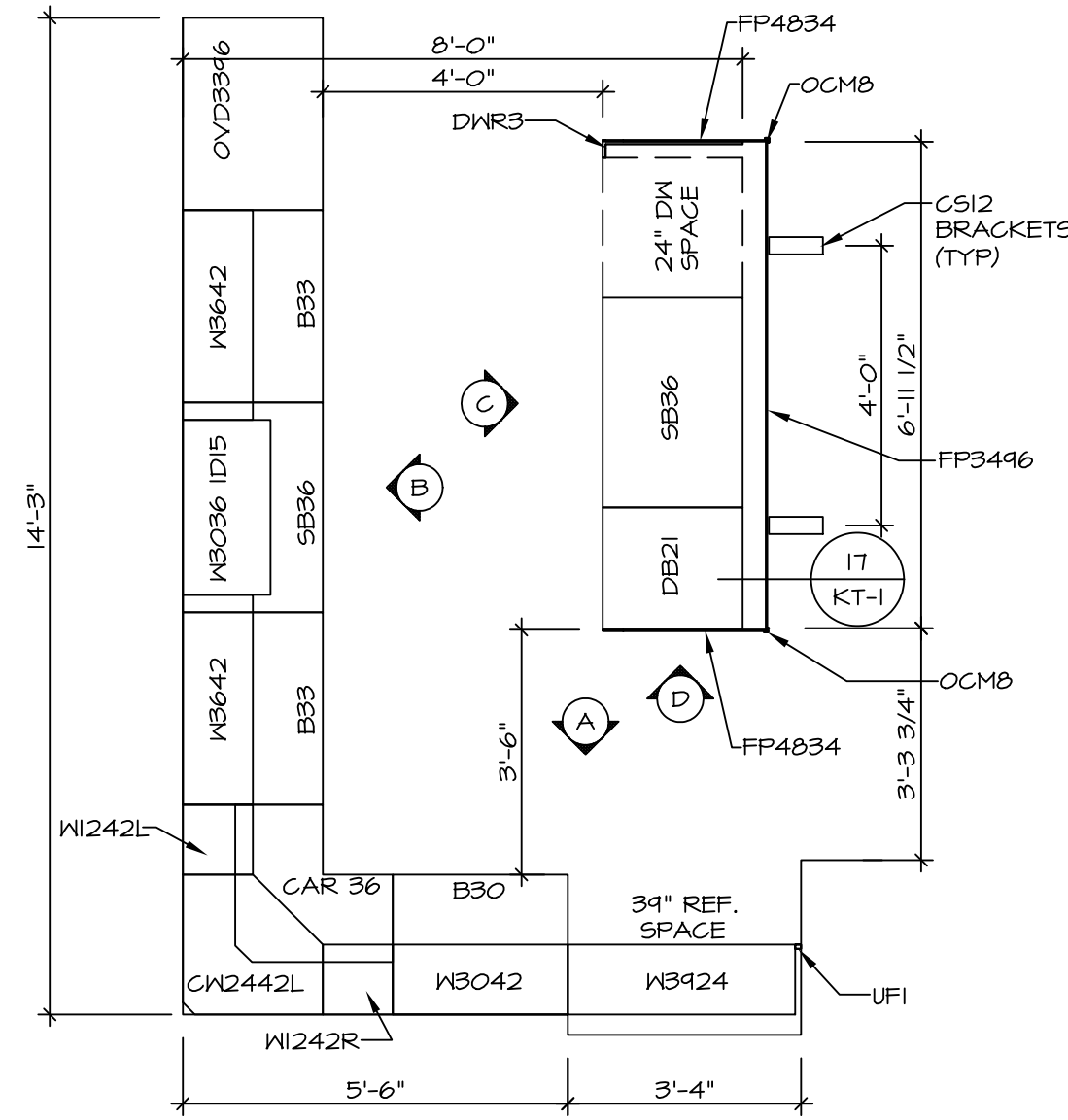
**NVR**  
NVR, Inc.  
Architectural Services  
5285 Westchase Circle  
Frederick, MD 21703

SET NO. CNPOO	VERSION 02
DRAWN BY	DATE:
OPTION	OPTION
MODEL: CAROLINA PLACE	
DRAWING TITLE: FIRST FLOOR PLAN	
OPTION DESCRIPTION	
SHEET NO. A-7	42



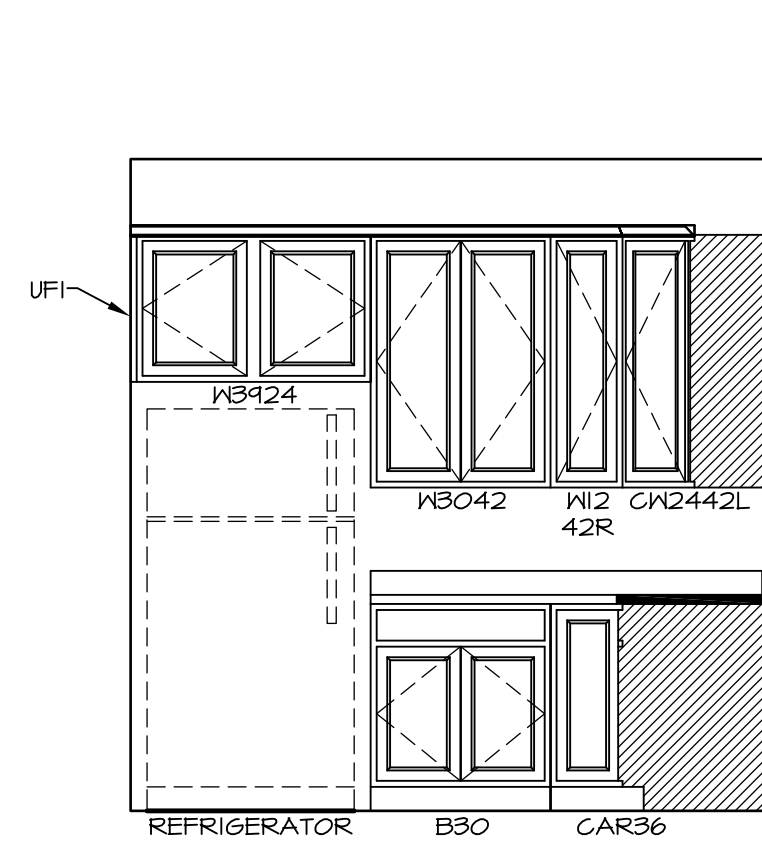
**KITCHEN COUNTERTOP  
PLAN - (KT-3119)**

2  
A-13 SCALE: 3/8" = 1'-0"

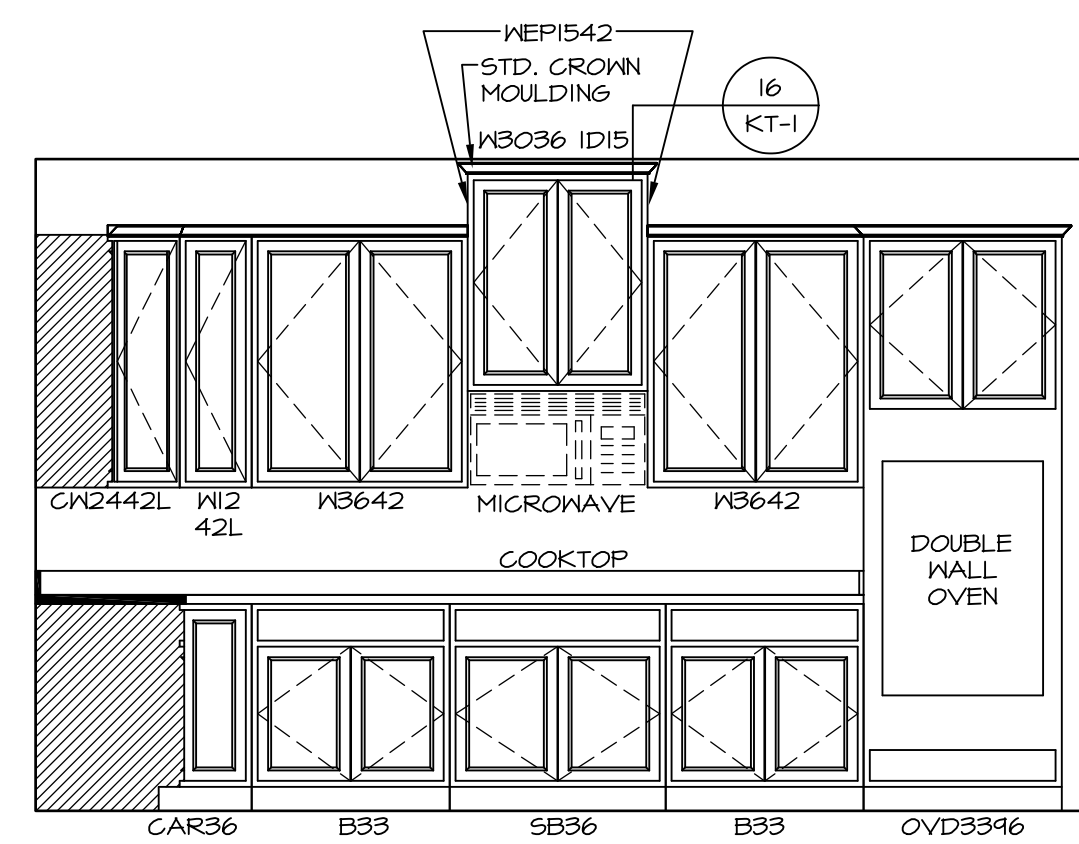


**KITCHEN CABINET  
PLAN - (KC-3119)**

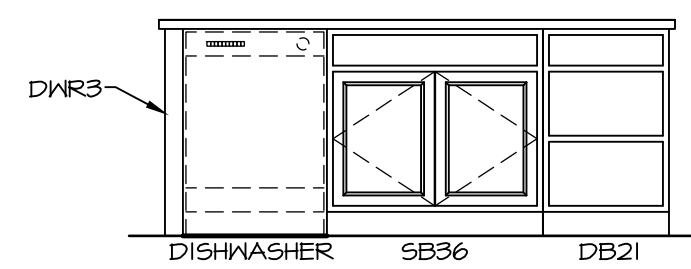
1  
A-13 SCALE: 3/8" = 1'-0"



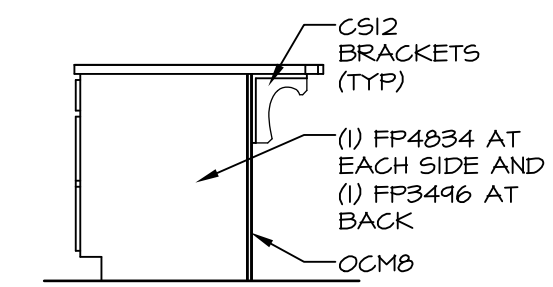
**A KITCHEN ELEVATION**  
SCALE: 3/8" = 1'-0"



**B KITCHEN ELEVATION**  
SCALE: 3/8" = 1'-0"



**C KITCHEN ELEVATION**  
SCALE: 3/8" = 1'-0"



**D KITCHEN ELEVATION**  
SCALE: 3/8" = 1'-0"

SHEET NO. <b>A-13</b>	MODEL <b>CAROLINA PLACE</b>	SET NO. CNPOO	VERSION 02
	DRAWING TITLE <b>KITCHENS</b>	DRAWN BY	DATE: 6/7/16
	OPTION DESCRIPTION	OPTION	
<b>54</b>			

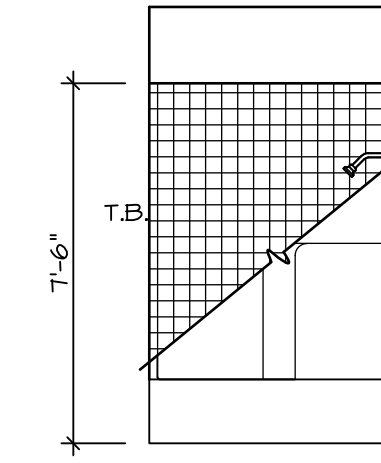
**NVR**  
NVR, Inc.  
Architectural Services  
5285 Westpark Drive, Suite 100  
Frederick, MD 21703

NVR, Inc., owner, expressly reserves its common law copyright and other property rights in these plans. These plans are not to be copied, reproduced, or otherwise used in any way without the express written consent of NVR, Inc.

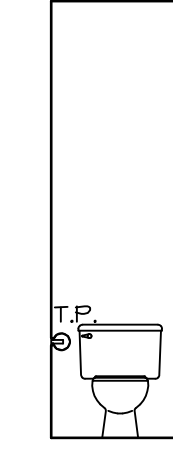
REV. NO.	DATE	REMARKS

**NOTES:**

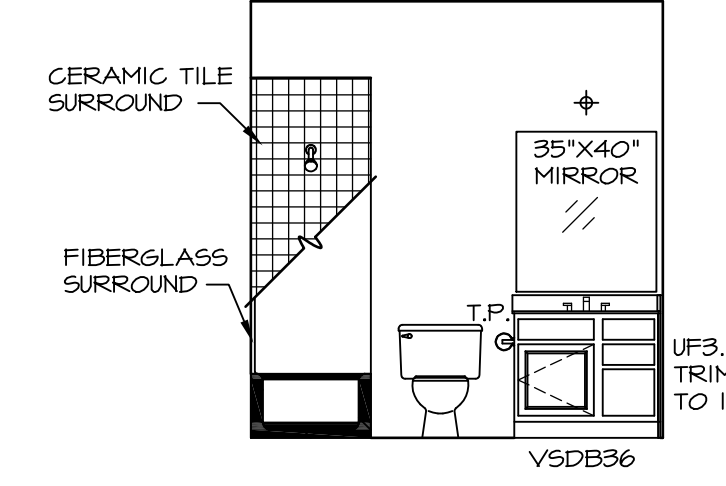
1. TEMPERED GLASS SHOWER ENCLOSURE WITH SWING DOOR OR OPTIONAL SLIDING DOOR BY DIVISION
2. TUB ACCESS PANELS PROVIDED AS NEEDED, ALL MATERIALS BY DIVISION
3. REFER TO SHEET IT-2 FOR TUB AND SHOWER DETAILS.
4. ALL VSDB24-42 DRAWERS TO BE SET ON RIGHT HAND.
5. BATH ELEVATIONS ARE SHOWN PER PLAN.



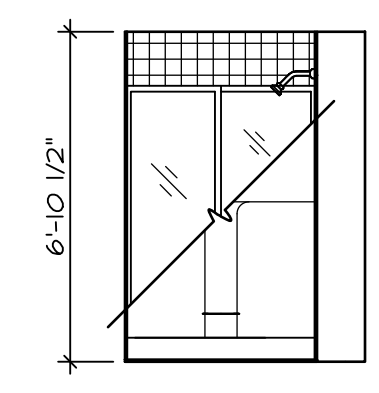
**D BATH #1**  
SCALE: 1/4" = 1'-0"



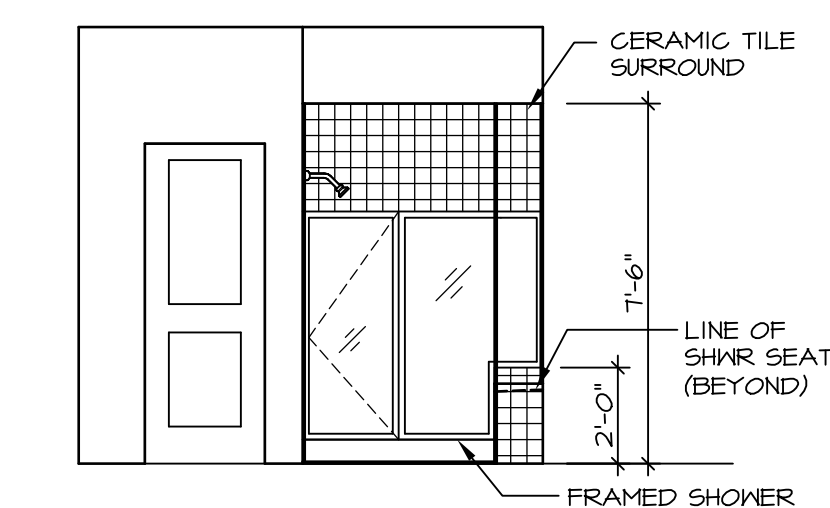
**G OWNER'S BATH**  
SCALE: 1/4" = 1'-0"



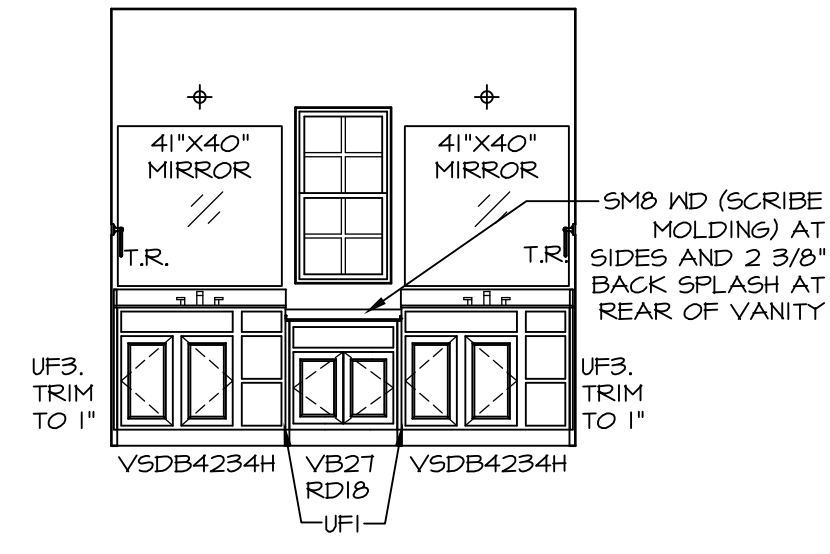
**C BATH #1**  
SCALE: 1/4" = 1'-0"



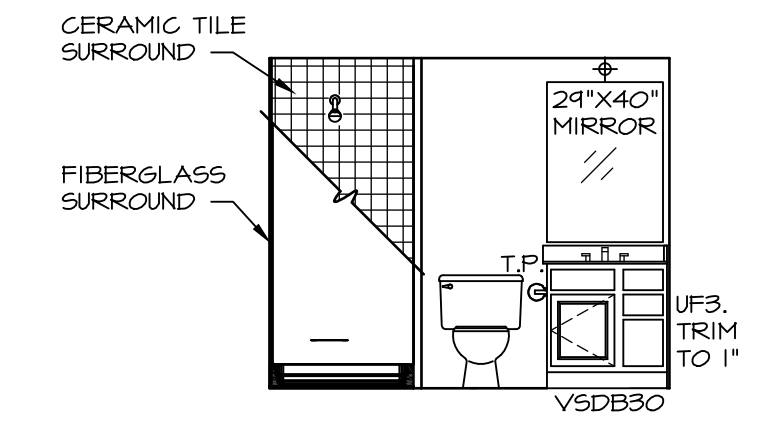
**B BSMT. BATH**  
SCALE: 1/4" = 1'-0"



**J OWNER'S BATH**  
SCALE: 1/4" = 1'-0"



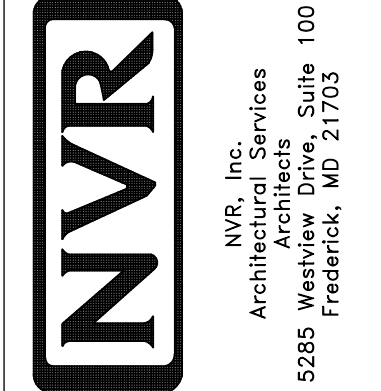
**H OWNER'S BATH**  
SCALE: 1/4" = 1'-0"



**A BSMT. BATH**  
SCALE: 1/4" = 1'-0"

REV. NO.	DATE	REMARKS
1	08/04/16	N-DRAWING ALIGNMENT

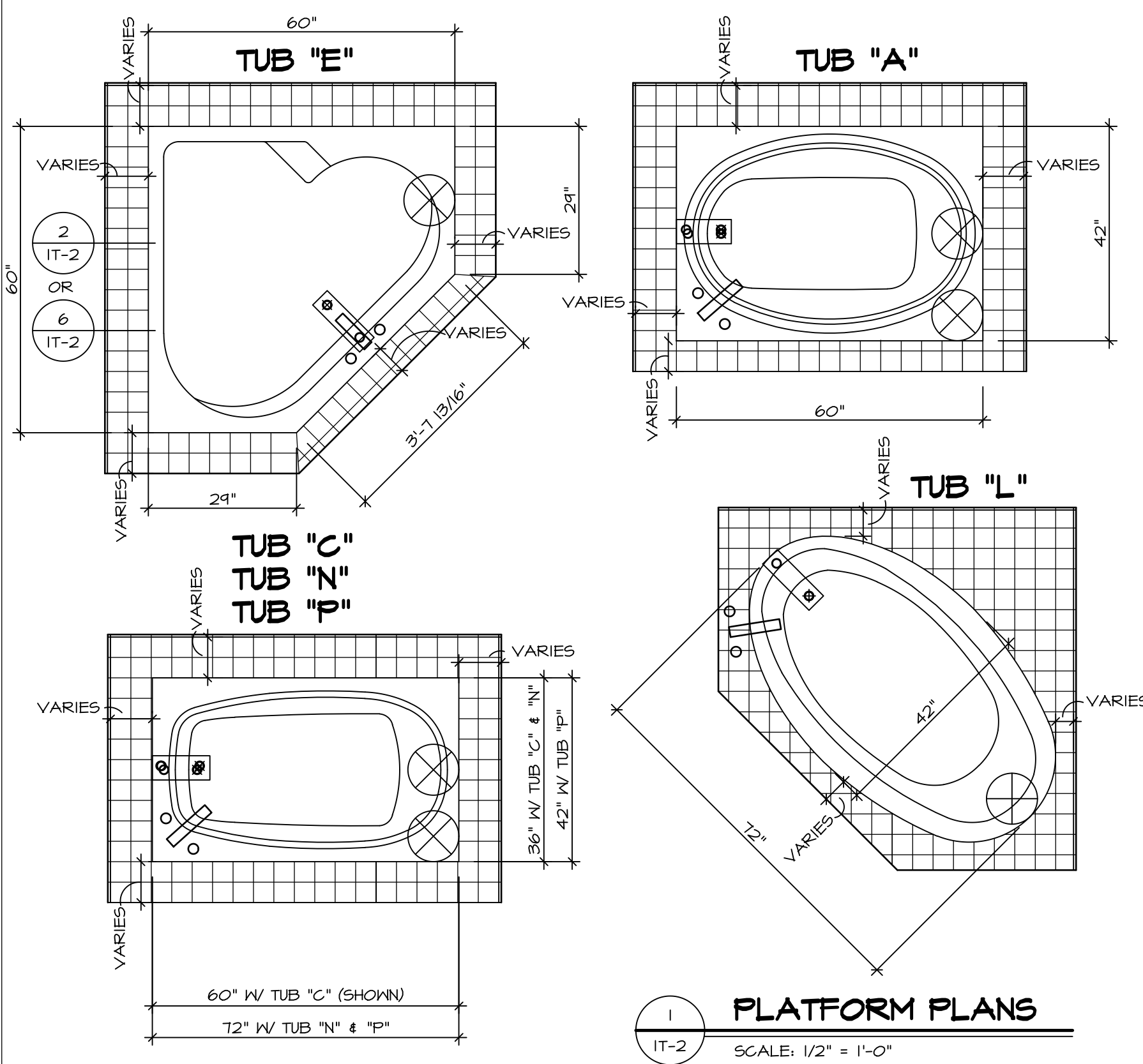
NVR, Inc., owner, expressly reserves its common law copyright and other property rights in these plans. These plans are not to be copied, reproduced, or transmitted in any form or by any means, nor are they to be assigned to any third party, without first obtaining the expressed written consent of NVR, Inc.



SET NO. CNP00	VERSION 02
DRAWN BY	DATE: 6/7/16
OPTION	OPTION

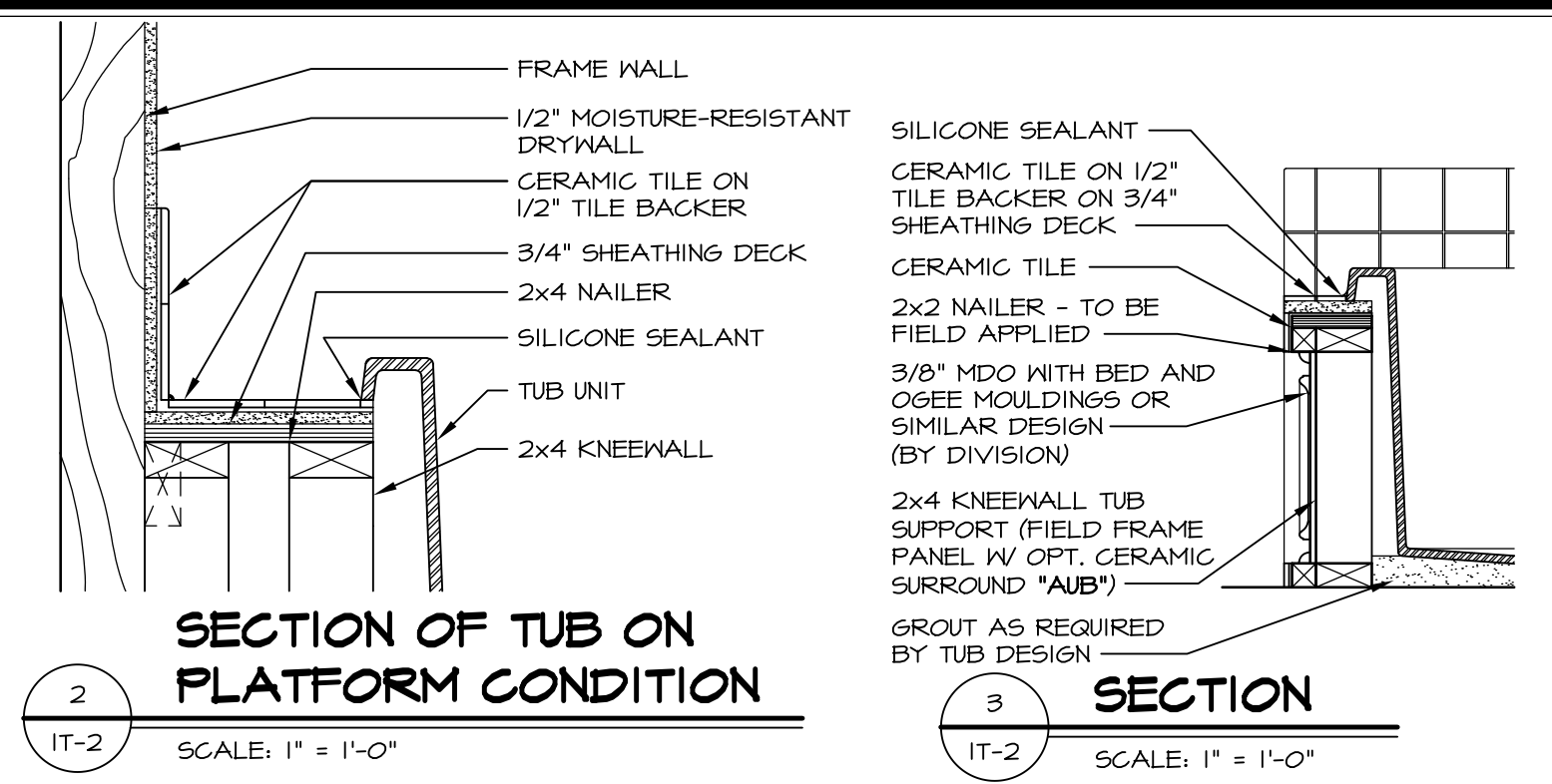
MODEL	CAROLINA PLACE
DRAWING TITLE	BATH ELEVATIONS
OPTION DESCRIPTION	



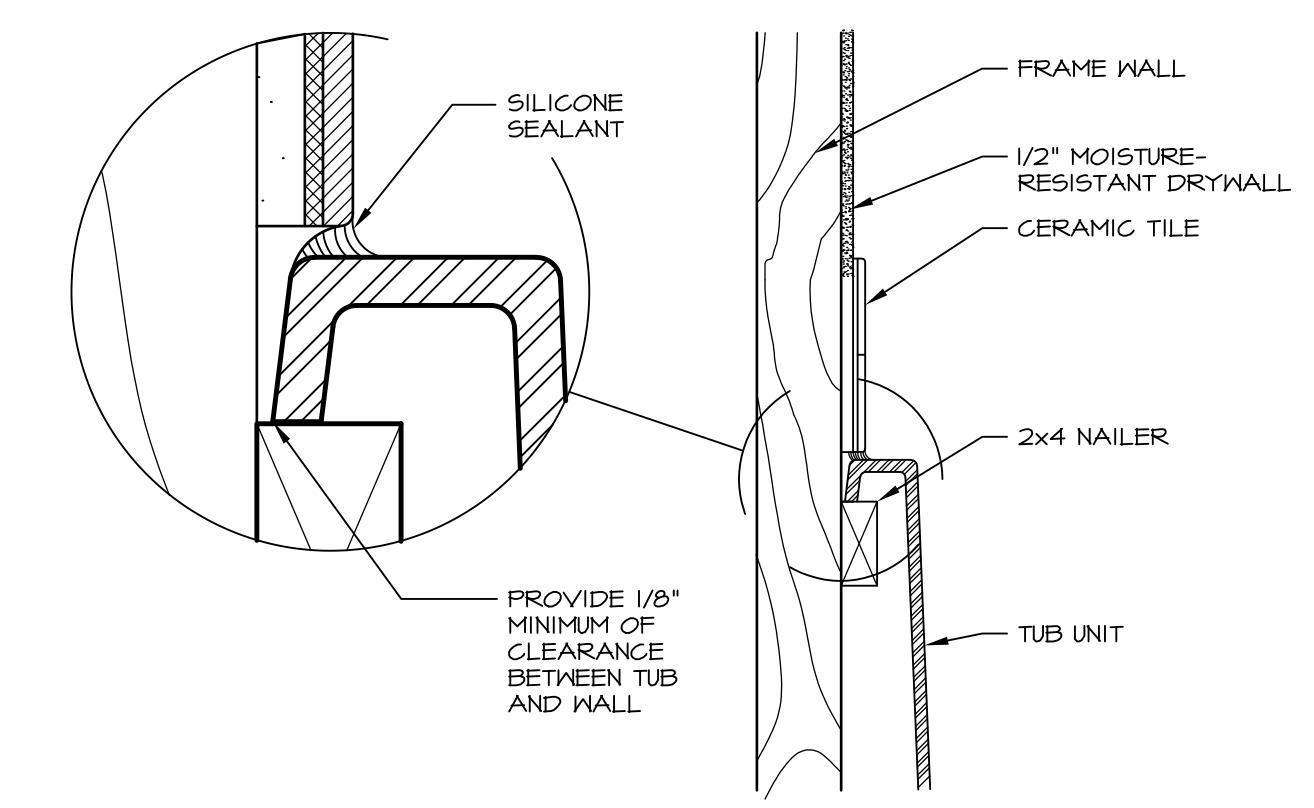


**1 PLATFORM PLANS**  
SCALE: 1/2" = 1'-0"

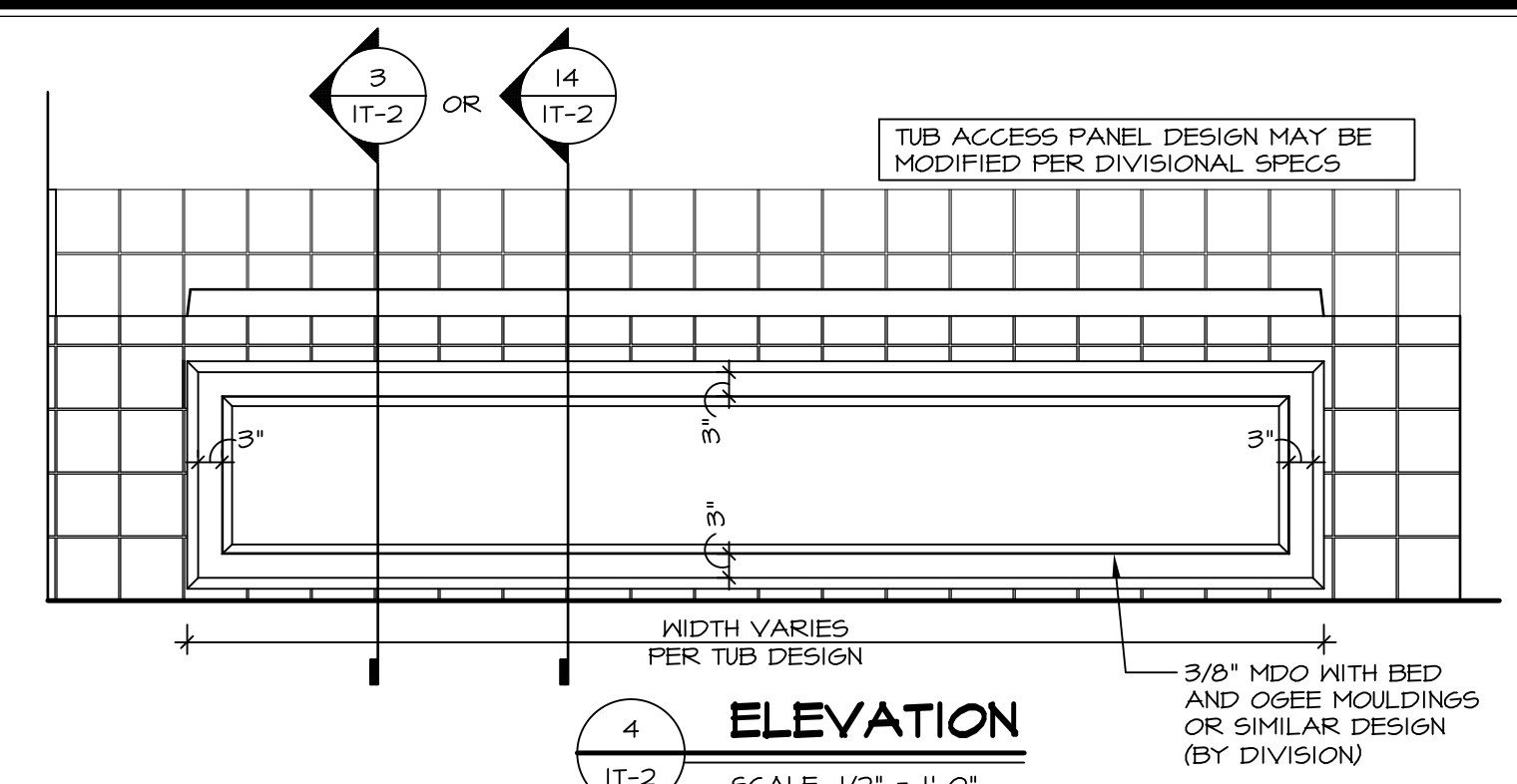
TUB	MANUF.	HEIGHT	WIDTH	LENGTH	TUB DECK PANEL HEIGHT
"A"	KOHLER/STERLING	18 3/4"	42"	60"	17 1/8"
"C"	KOHLER/STERLING	18 3/4"	36"	60"	17 1/8"
"E"	KOHLER/STERLING	19 1/2"	60"	60"	17 7/8"
"L"	KOHLER/STERLING	18 1/2"	42"	72"	16 7/8"
"N"	KOHLER/STERLING	18 3/4"	36"	72"	17 1/8"
"P"	KOHLER/STERLING	18 3/4"	42"	72"	17 1/8"



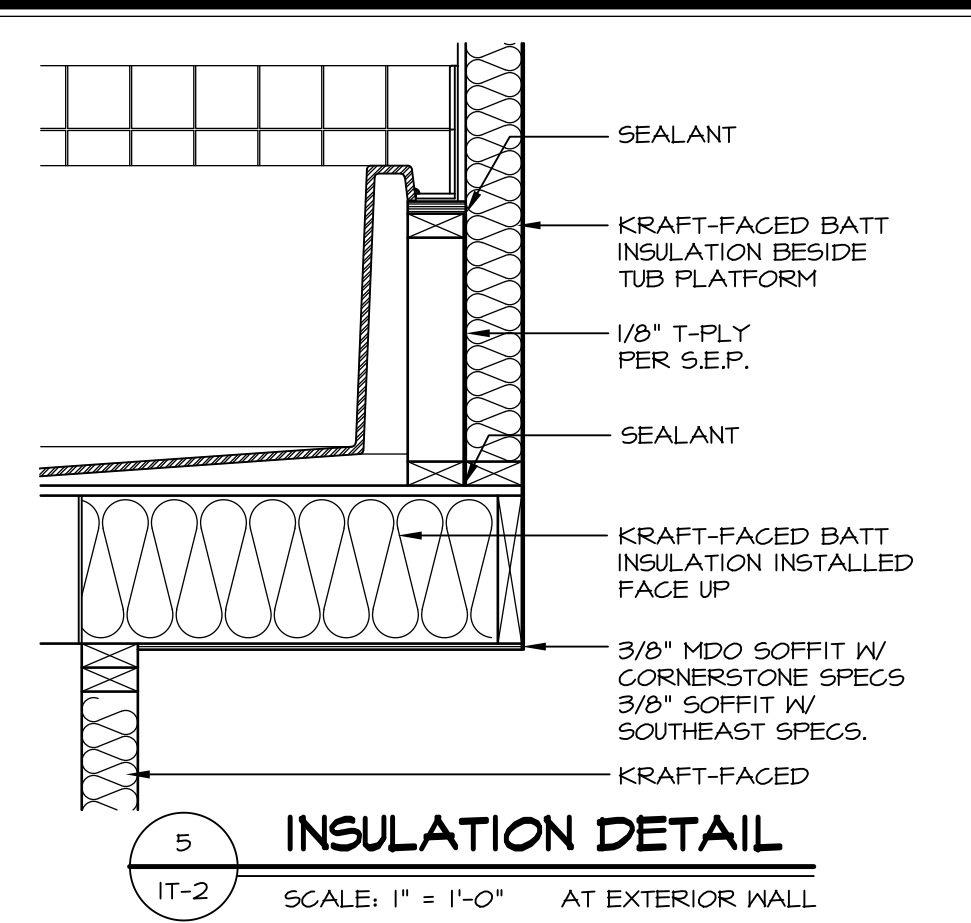
**2 SECTION OF TUB ON PLATFORM CONDITION**  
SCALE: 1" = 1'-0"



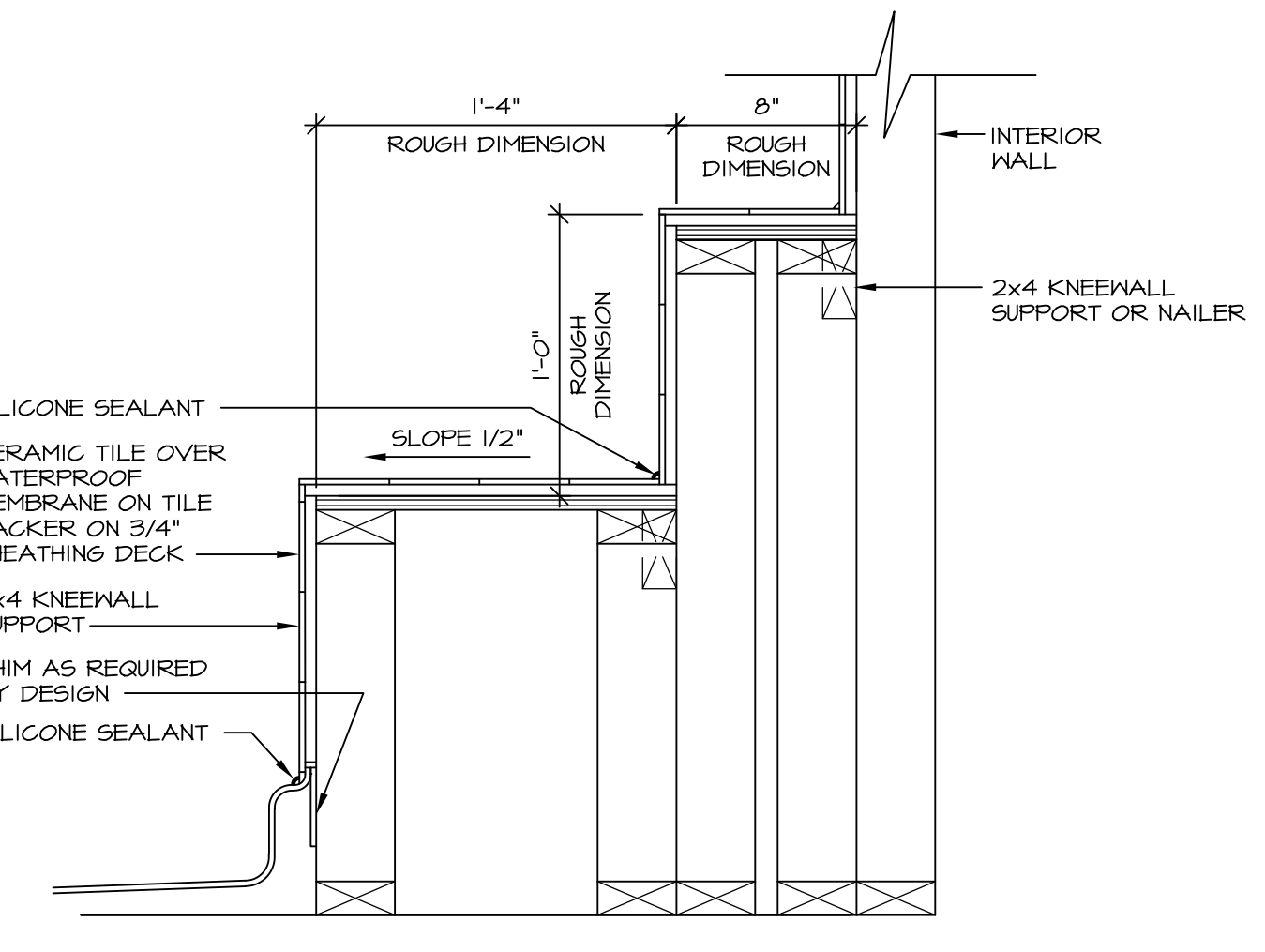
**3 SECTION OF TUB TO WALL CONDITION**  
SCALE: 1 1/2" = 1'-0"



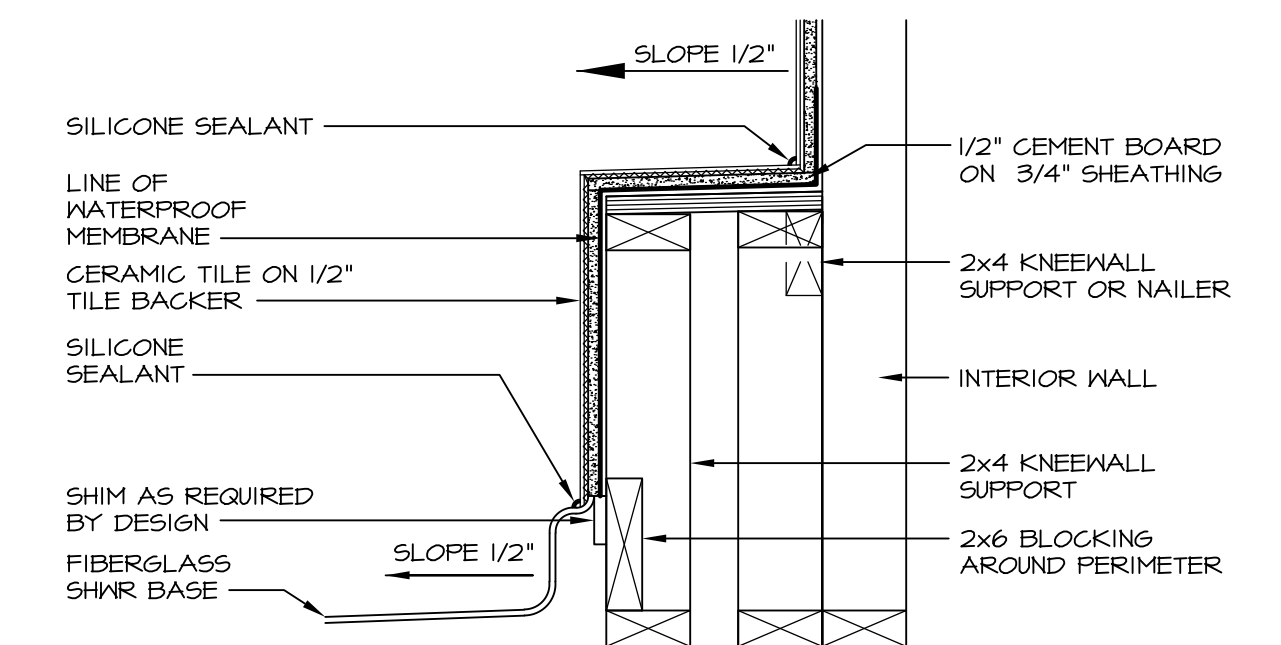
**4 ELEVATION**  
SCALE: 1/2" = 1'-0"



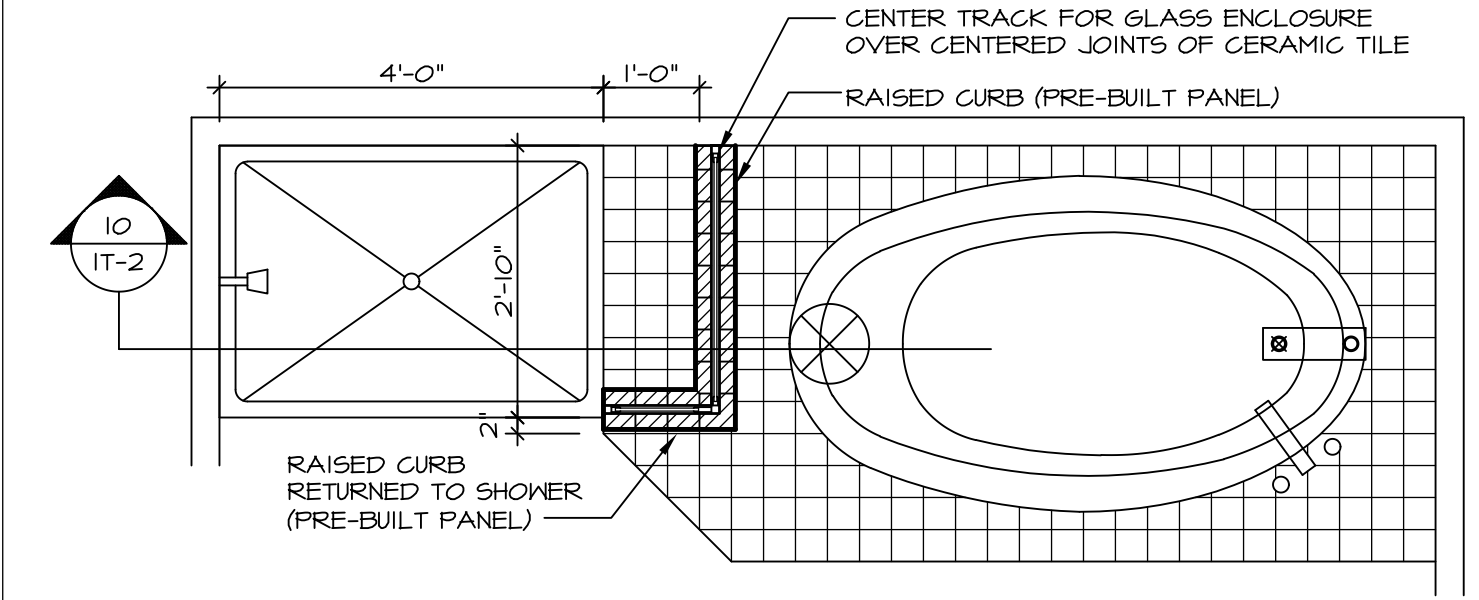
**5 INSULATION DETAIL**  
SCALE: 1" = 1'-0" AT EXTERIOR WALL



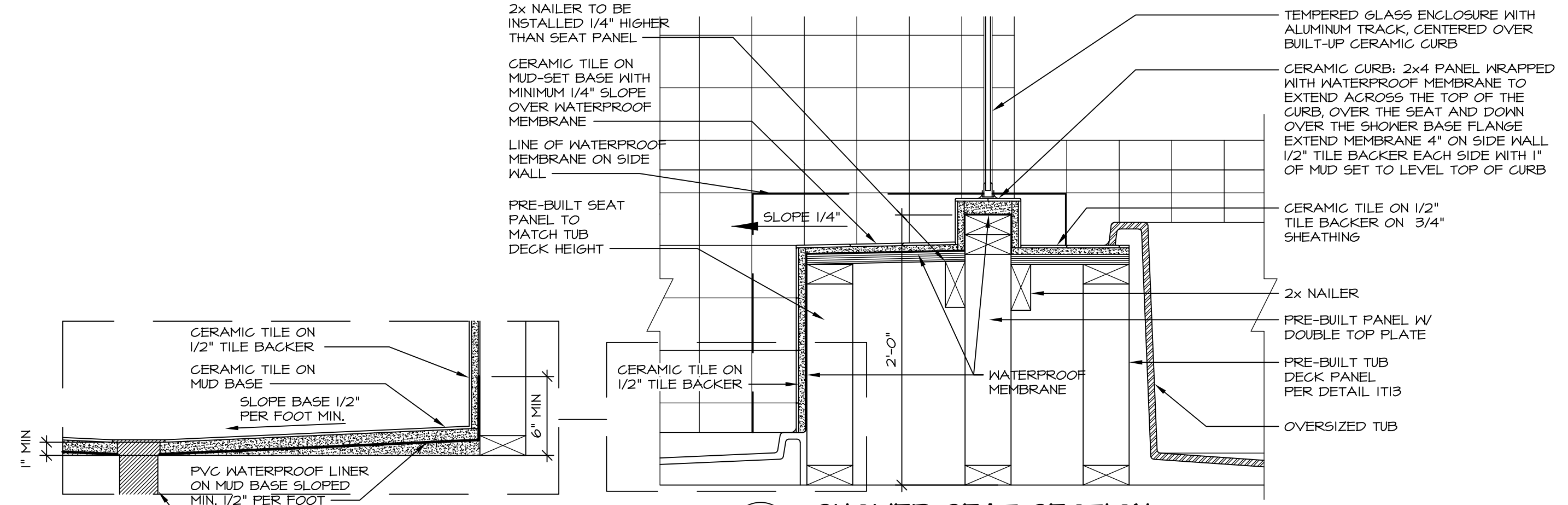
**6 SECTION OF SHOWER SEAT AND SHELF**  
SCALE: 1 1/2" = 1'-0"



**7 SECTION OF SHOWER SEAT**  
SCALE: 1-1/2" = 1'-0" FIBERGLASS SHOWER BASE



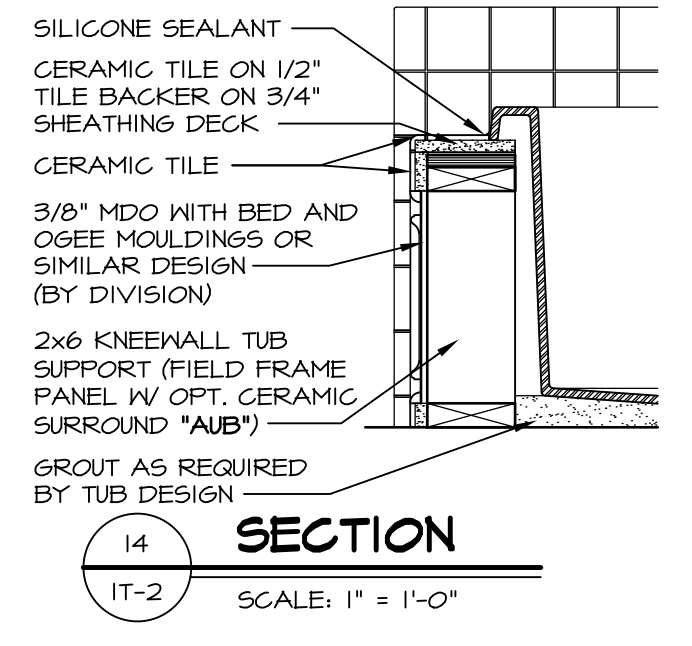
**9 SHOWER SEAT PLAN / DETAIL**  
SCALE: 1/2" = 1'-0"



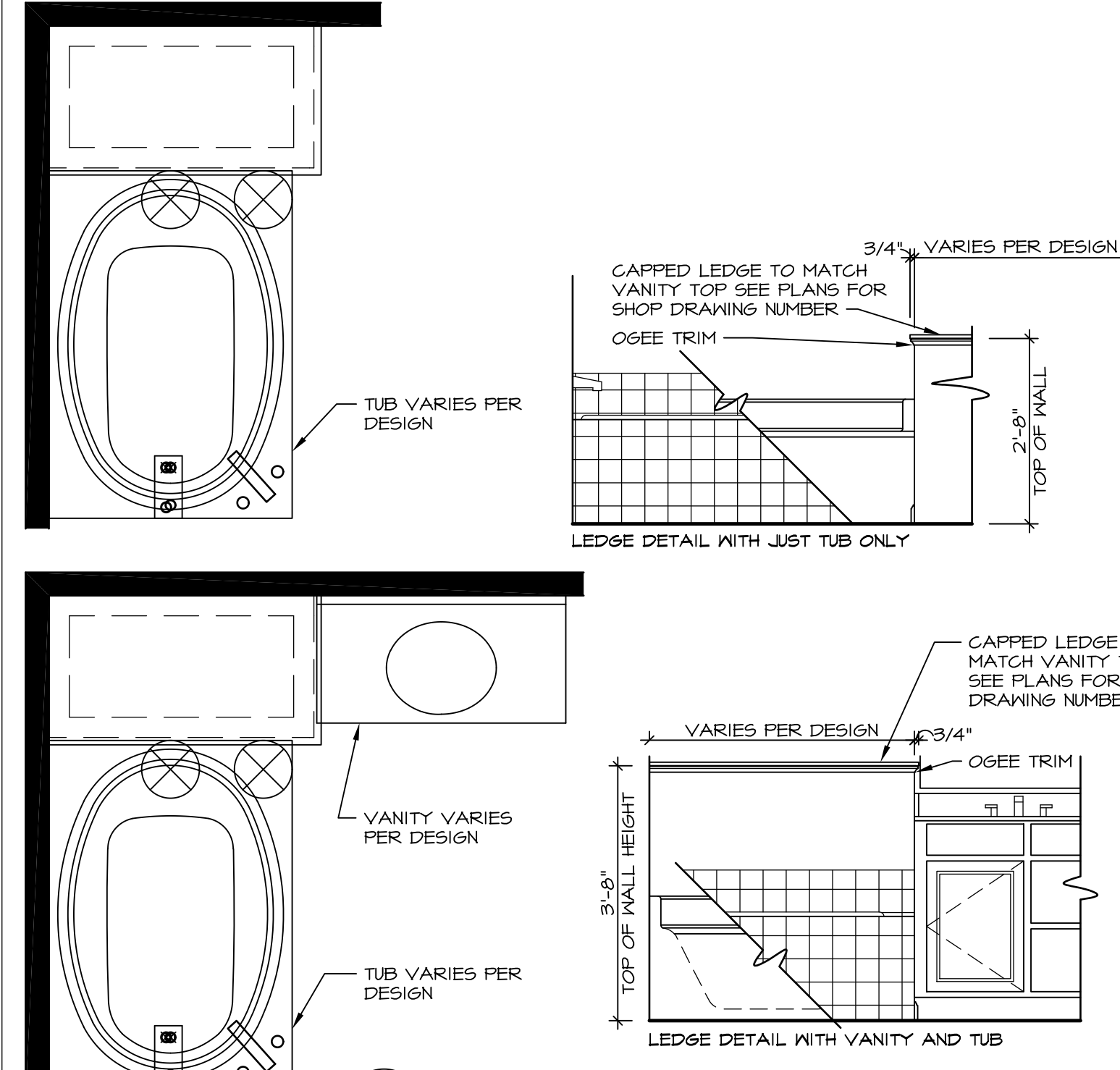
**10 SHOWER SEAT SECTION**  
SCALE: 1-1/2" = 1'-0"



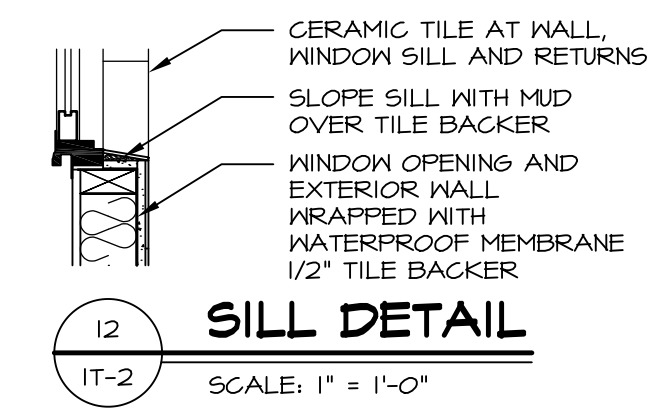
**11 ALTERNATE SHOWER PAN DETAIL**



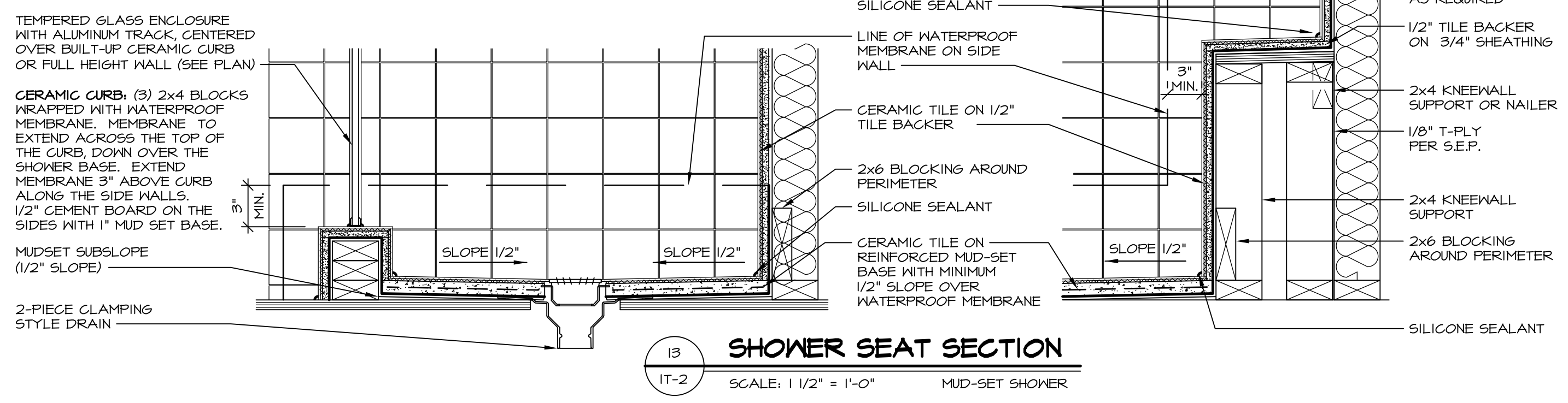
**12 SECTION**  
SCALE: 1" = 1'-0"



**11 BATHROOM LEDGE DETAIL**  
SCALE: 1/2" = 1'-0"



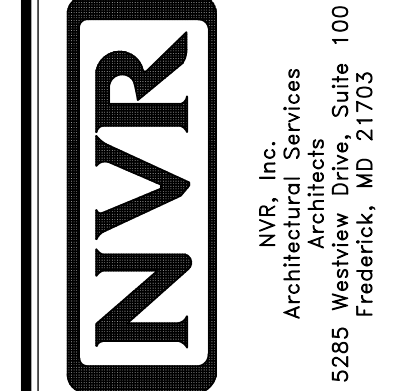
**12 SILL DETAIL**  
SCALE: 1" = 1'-0"



**13 SHOWER SEAT SECTION**  
SCALE: 1 1/2" = 1'-0" MUD-SET SHOWER

REV. NO. DATE  
5/11/17  
5/11/17

REMARKS  
EPP - REVISED DETAIL 1 AND 11 TO REMOVE TUB ACCESS PANEL REF. (095 #15 5414)



SET NO. NVR  
VERSION  
DRAWN BY  
DATE:  
OPTION

MODEL  
**STANDARD DETAILS**  
DRAWING TITLE  
INTERIOR TRIM DETAILS  
BATH DETAILS  
OPTION DESCRIPTION

SHEET NO.  
**IT-2**