

1
A-5 PLUMBING PLAN
SCALE: 1/4" = 1'-0"

SHEET NO. A-5	MODEL CAROLINA PLACE	SET NO. CNPOO
OPTION DESCRIPTION 36	DRAWING TITLE PLUMBING PLAN	VERSION 02
	DATE:	DRAWN BY:
	OPTION:	

NVR
NVR, Inc.
Architectural Services
Architects
5285 Westpark Drive, Suite 100
Frederick, MD 21703

NVR, Inc., owner, expressly reserves its common law copyright and other property rights in these plans. These plans are not to be copied, reproduced, or transmitted in any form or by any means, nor are they to be assigned to any third party, without first obtaining the expressed written consent of NVR, Inc.

REV. NO.	DATE	REMARKS

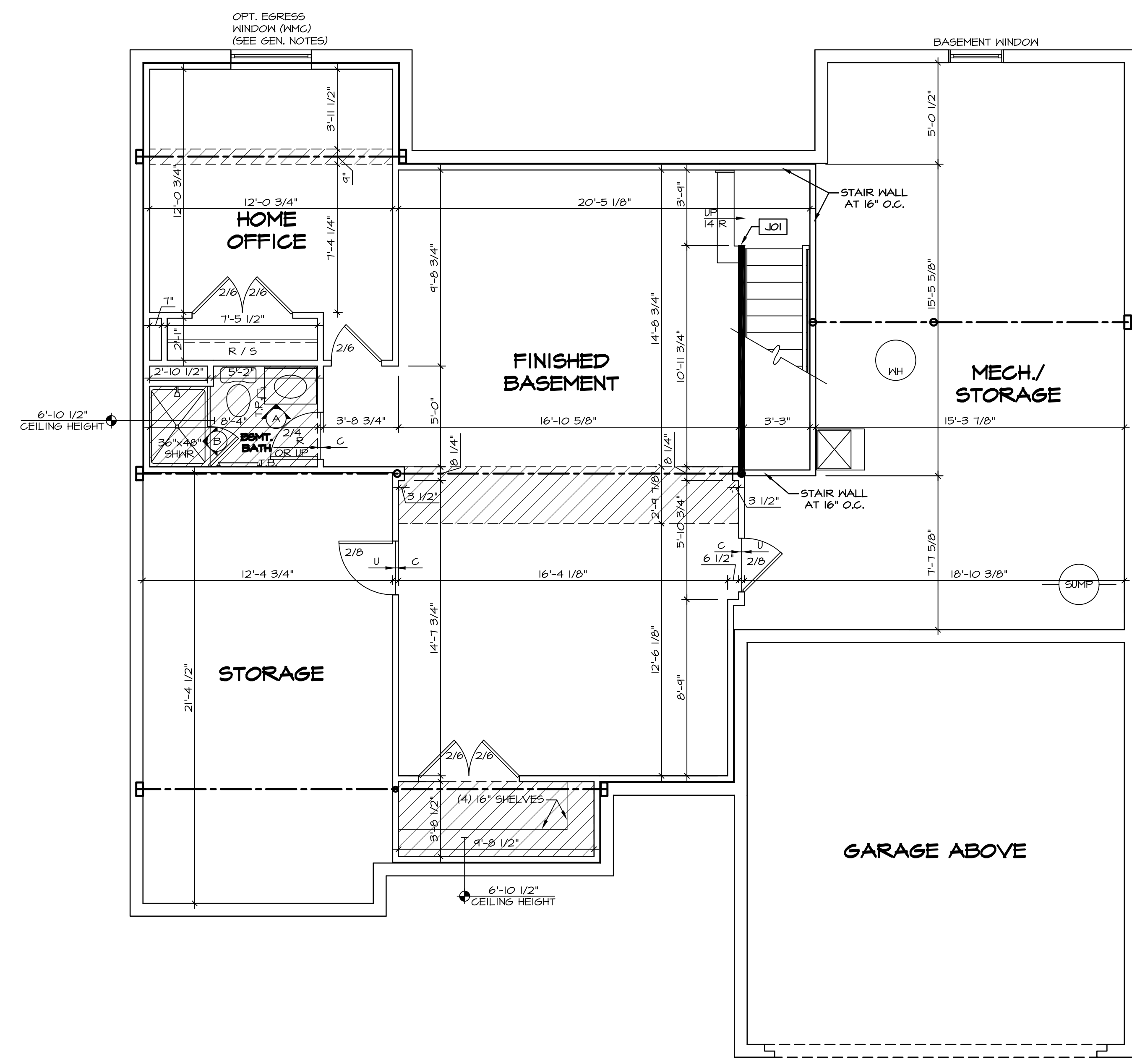
BASEMENT JACK SCHEDULE				
IDENTIFIER	DESCRIPTION	OPTIONS	ENG. NUM.	REMARKS
J01	JACK - 2x4 SPF STUD GRADE		B016	

LEGEND	
	BEARING WALL
	NON BEARING WALL
	INDICATES BEARING FROM POINT-LOAD ABOVE
	JACKS
	BEAM/HEADER
	PAD FOOTING
	STEEL COLUMN
	PORTAL FRAME
	JOIST/TRUSS
	LVL
	ENGINEERING PAGE NUMBER

SEE FC DETAILS FOR FRAMING CONNECTORS

- FLOOR PLAN NOTES**
- ALL HEADERS ARE (2) 2x6 W/ 2x4 WALLS OR (3) 2x6 W/ 2x6 WALLS, UNLESS OTHERWISE NOTED.
 - ALL HEADERS TO HAVE (1) 2x4 OR 2x6 JACK EACH END, UNLESS OTHERWISE NOTED.
 - ALL EXTERIOR WALLS TO BE 4" AND ALL INTERIOR WALLS TO BE 3 1/2", UNLESS OTHERWISE NOTED.
 - HATCHED AREAS INDICATE DROPPED CEILINGS. ALL DROPPED CEILINGS ARE 12" UNLESS OTHERWISE NOTED.
 - SEE 'BRACED WALL PANEL DETAIL SHEET' FOR SPECIAL WALL FRAMING LOCATIONS AND HEADER SIZES, IF APPLICABLE.
 - SEE STANDARD DETAIL CATEGORY 'IT' SHEET(S) FOR INTERIOR TRIM DETAILS.
 - SEE ARCHITECTURAL DETAIL SHEET 'AD' FOR HOUSE SPECIFIC INTERIOR TRIM OPTION TABLE.
 - ALL WINDOWS HAVE 7'-0 1/2" HEADER HEIGHT UNLESS OTHERWISE NOTED.

- GYPSUM NOTES**
- AT GARAGE:
GYPSUM BOARD AT COMMON WALLS, CEILING, BEAM WRAPS AND SUPPORTS PER STANDARD DETAIL FA-1(b) FIRE ASSEMBLIES OR AS REQUIRED BY LOCAL CODE.
- AT STAIRS:
1/2" GYPSUM BOARD AT UNDERSIDE OF STAIRS AND WALLS IN CLOSET



BASEMENT FLOOR PLAN
SCALE: 1/4" = 1'-0"

SHEET NO.	MODEL	SET NO.	DATE	OPTION	REVISIONS
A-6	CAROLINA PLACE BASEMENT FLOOR PLAN	CNPOO VERSION 02		FEA	
40	FULL BASEMENT FOUNDATION				

NVR
NVR, Inc.
Architectural Services
5285 West... Suite 100
Frederick, MD 21703

C:\NVR\Solves\CAROLINA_PLACE_CNPOO_02\DCY-EW-S007\431444\Sheets\01_Specific\A-6 A-6 BSM_LS.dwg 05/17/17 = 3:49 am

LEGEND

	BEARING WALL
	NON BEARING WALL
	INDICATES BEARING FROM POINT-LOAD ABOVE JACKS
	BEAM/HEADER
	PAD FOOTING
	STEEL COLUMN
	PORTAL FRAME
	JOIST/TRUSS
	LVL
	ENGINEERING PAGE NUMBER

SEE FC DETAILS FOR FRAMING CONNECTORS

- FLOOR PLAN NOTES**
- ALL HEADERS ARE (2) 2x6 w/ 2x4 WALLS OR (3) 2x6 w/ 2x6 WALLS, UNLESS OTHERWISE NOTED.
 - ALL HEADERS TO HAVE (1) 2x4 OR 2x6 JACK EACH END, UNLESS OTHERWISE NOTED.
 - ALL EXTERIOR WALLS TO BE 4" AND ALL INTERIOR WALLS TO BE 3 1/2", UNLESS OTHERWISE NOTED.
 - HATCHED AREAS INDICATE DROPPED CEILINGS. ALL DROPPED CEILINGS ARE 12" UNLESS OTHERWISE NOTED.
 - SEE "BRACED WALL PANEL DETAIL SHEET" FOR SPECIAL WALL FRAMING LOCATIONS AND HEADER SIZES, IF APPLICABLE.
 - SEE STANDARD DETAIL CATEGORY "IT" SHEET(S) FOR INTERIOR TRIM DETAILS.
 - SEE ARCHITECTURAL DETAIL SHEET "AD" FOR HOUSE SPECIFIC INTERIOR TRIM OPTION TABLE.
 - ALL WINDOWS HAVE T-0 1/2" HEADER HEIGHT UNLESS OTHERWISE NOTED.

- GYPSUM NOTES**
- AT GARAGE:
GYPSUM BOARD AT COMMON WALLS, CEILING, BEAM WRAPS AND SUPPORTS PER STANDARD DETAIL FA-1(b) FIRE ASSEMBLIES OR AS REQUIRED BY LOCAL CODE.
- AT STAIRS:
1/2" GYPSUM BOARD AT UNDERSIDE OF STAIRS AND WALLS IN CLOSET

LVL PLY TO PLY FASTENING SCHEDULE:

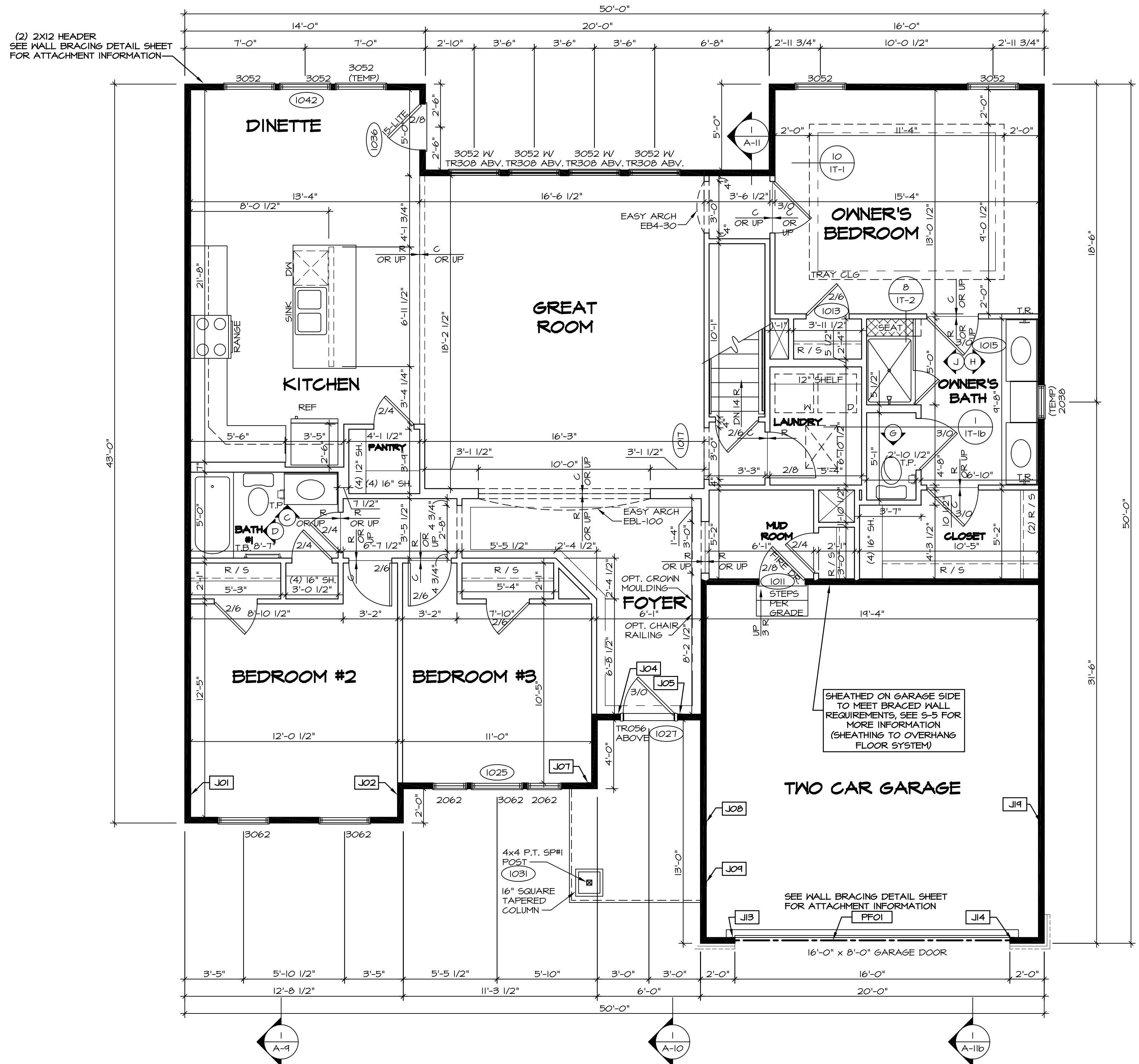
1.A - (2) PLY UP TO AND INCLUDING 11 7/8" TALL; FASTEN PLYS W/ (2) ROWS 16D NAILS AT 12" O.C.
 2.A - (2) PLY 14" TO AND 18" TALL (INCLUSIVE); FASTEN PLYS W/ (3) ROWS 16D NAILS AT 12" O.C.
 3.A - (2) PLY 20" TALL AND OVER; FASTEN PLYS W/ (4) ROWS 16D NAILS AT 12" O.C.
 4.A - (3) PLY UP TO AND INCLUDING 11 7/8" TALL; FASTEN PLYS W/ (2) ROWS 16D NAILS AT 12" O.C. FROM EACH SIDE
 5.A - (3) PLY 14" TO AND 18" TALL (INCLUSIVE); FASTEN PLYS W/ (3) ROWS 16D NAILS AT 12" O.C. FROM EACH SIDE
 6.A - (3) PLY 20" TALL AND OVER; FASTEN PLYS W/ (4) ROWS 16D NAILS AT 12" O.C. FROM EACH SIDE

FIRST FLOOR BEAM/HEADER SCHEDULE

IDENTIFIER	DESCRIPTION	LENGTH	OPTIONS	ENG. NUM.	REMARKS
FF01	BEAM BUILT 2X12 - 2 PLY	14'-8"	6CB	1033	2-PLY, PORTAL FRAME

FIRST FLOOR JACK SCHEDULE

IDENTIFIER	DESCRIPTION	OPTIONS	ENG. NUM.	REMARKS
J01	JACK - (4) 2X4 SPH		1044	
J02	JACK - (4) 2X4 SPH		1044	
J04	JACK - (2) 2X4 SPF STUD GRADE		1027	
J05	JACK - (2) 2X4 SPF STUD GRADE		1027	
J07	JACK - (2) 2X4 SPF STUD GRADE	ELK	1031	
J08	JACK - (2) 2X4 SPF STUD GRADE	ELK	1044	
J09	JACK - (2) 2X4 SPF STUD GRADE	ELK	1031	
J13	JACK - (2) 2X4 SPF STUD GRADE	6CB	1033	
J14	JACK - (2) 2X4 SPF STUD GRADE	6CB	1033	
J14	JACK - (2) 2X4 SPF STUD GRADE	6CB, ELB, ELK	1044	



FIRST FLOOR PLAN
SCALE: 1/4" = 1'-0"

REVISIONS

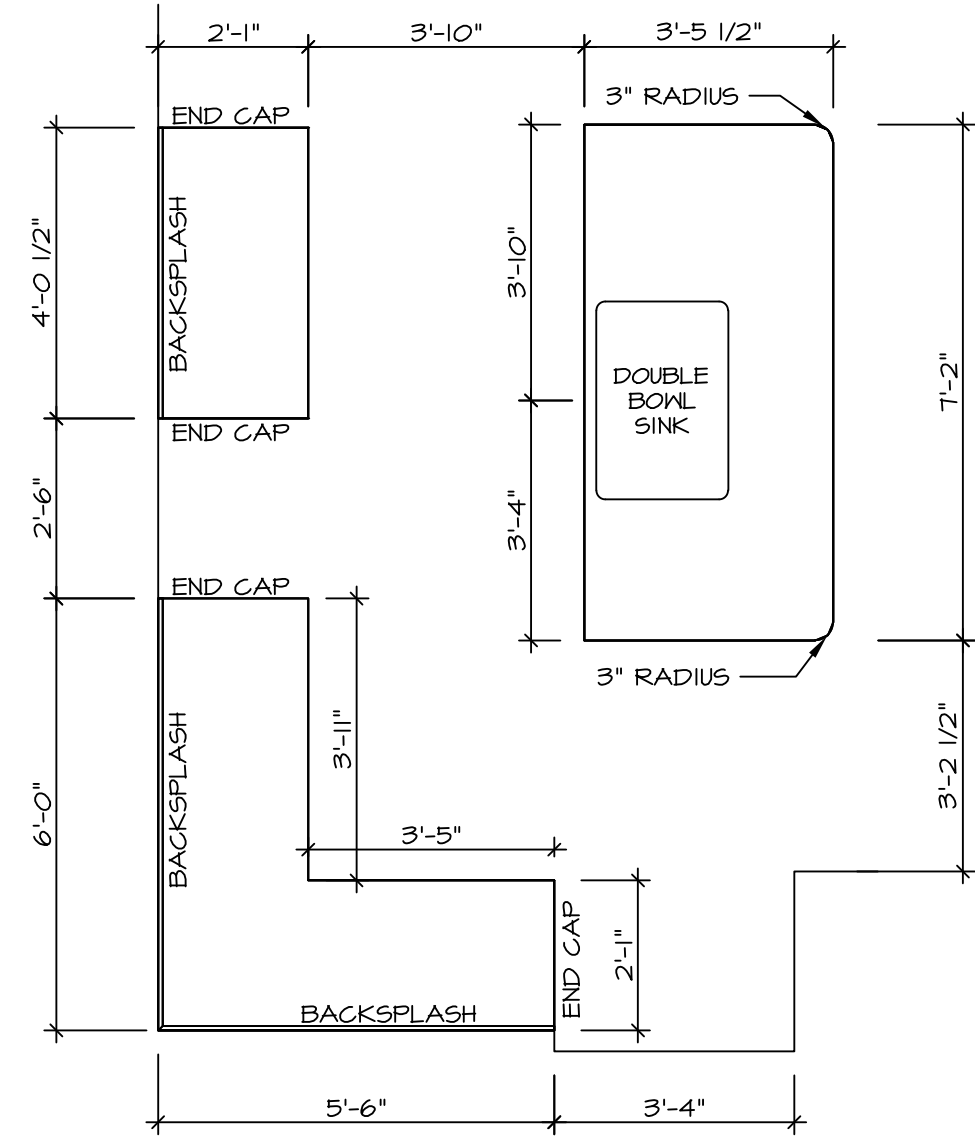
REV. NO.	DATE	DESCRIPTION
1	05/04/16	N-DRAWING ALIGNMENT

REMARKS

NVR Inc.
Architectural Services
5285 Washington Blvd
Frederick, MD 21703

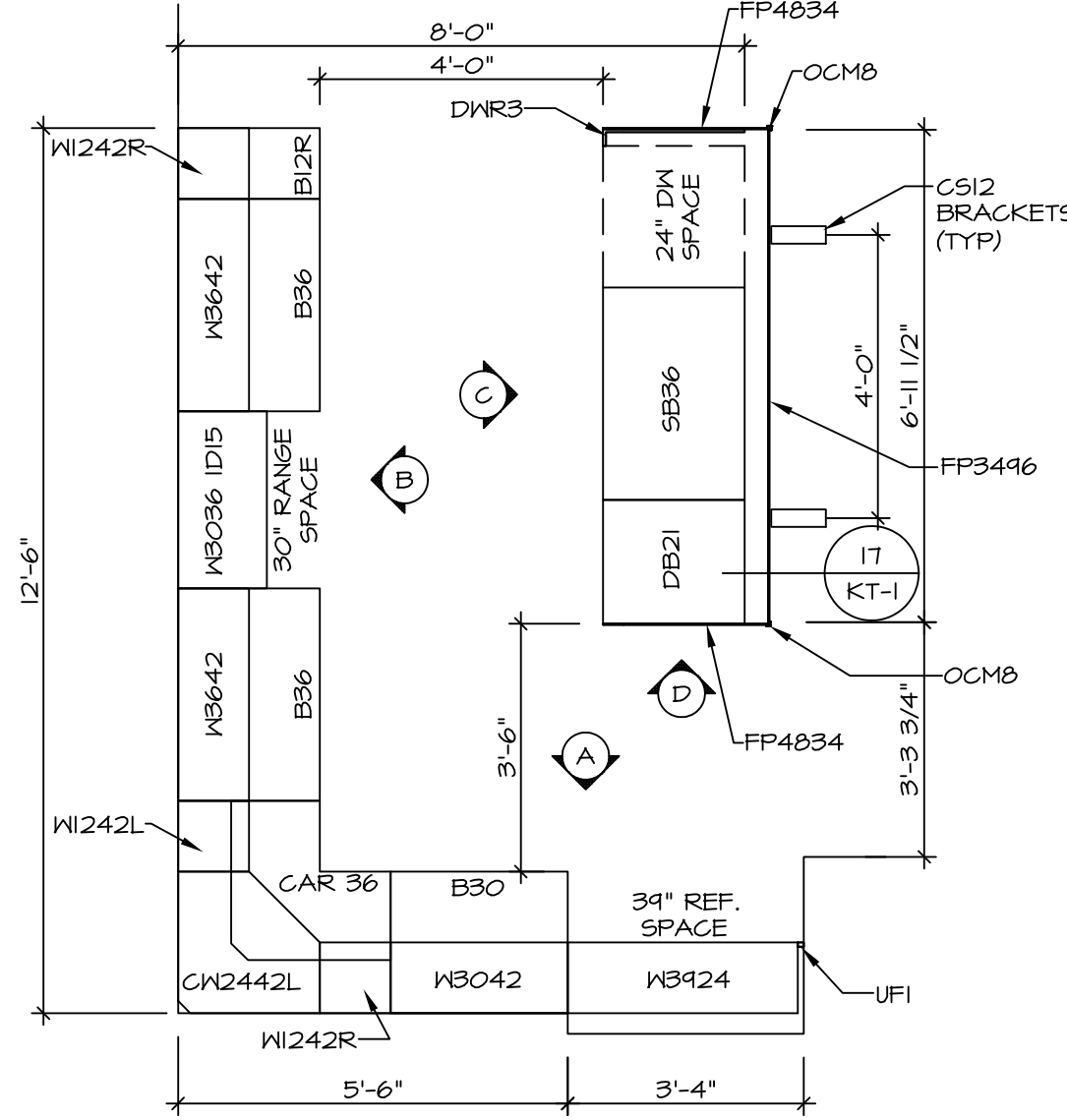
SET NO. CNP00	VERSION 02
DRAWN BY	OPTION
DATE:	OPTION
MODEL	CAROLINA PLACE
DRAWING TITLE	FIRST FLOOR PLAN
OPTION DESCRIPTION	
SHEET NO.	A-7
42	

C:\NVR\Solves\CAROLINA PLACE_CNP00_02\DCY-EW-S007\431444\Sheets\02 A-7 FLOOR PLAN LS.dwg 05/17/17 - 3:49 gm



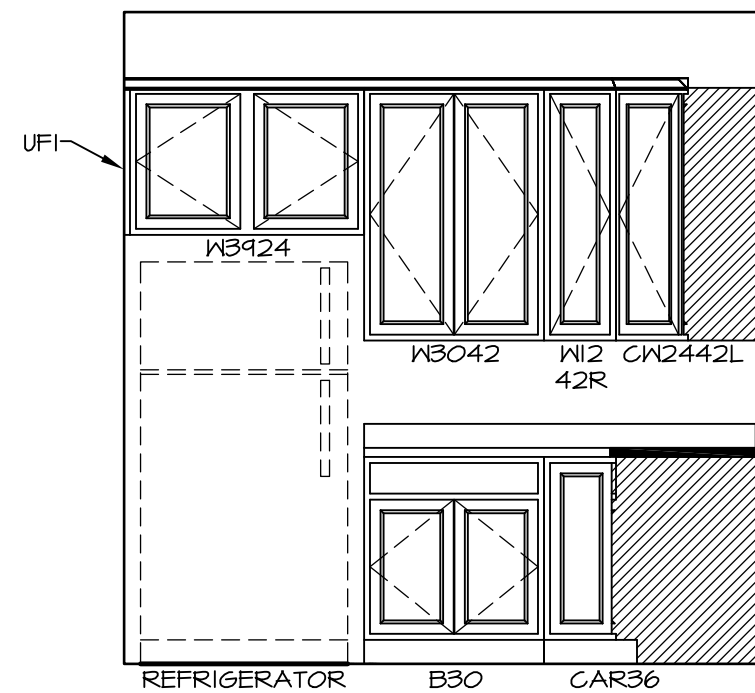
KITCHEN COUNTERTOP PLAN - (KT-3117)

2
A-13 SCALE: 3/8" = 1'-0"



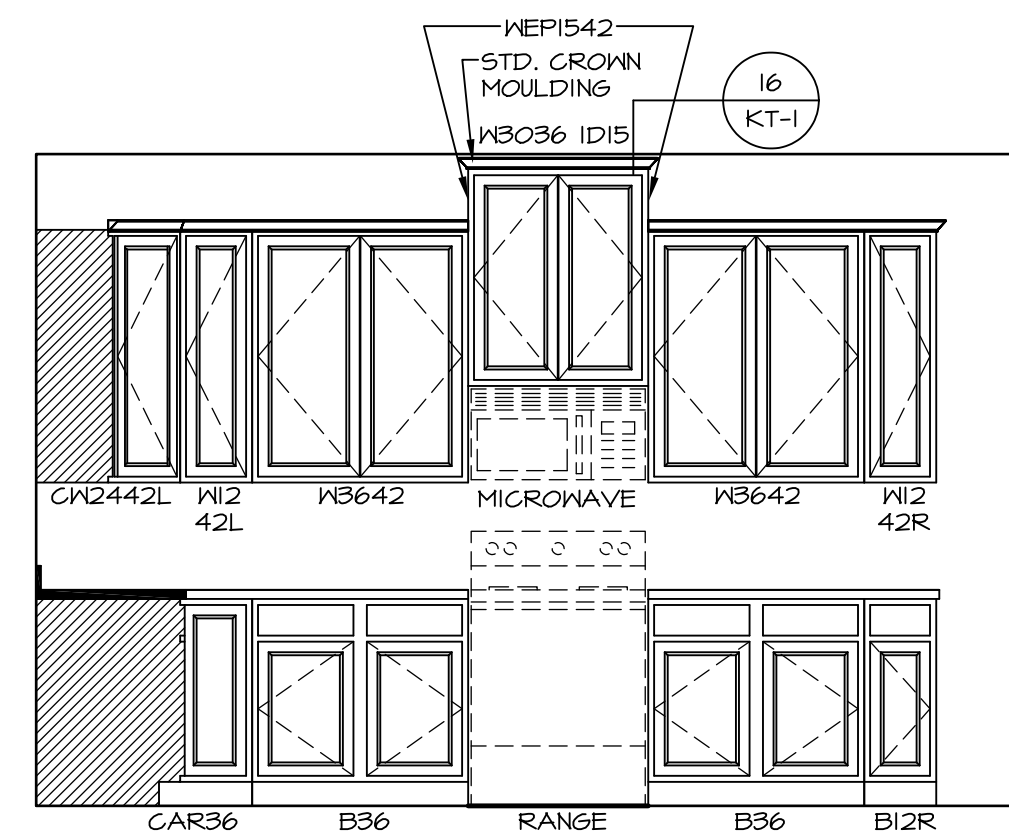
KITCHEN CABINET PLAN - (KC-3117)

1
A-13 SCALE: 3/8" = 1'-0"



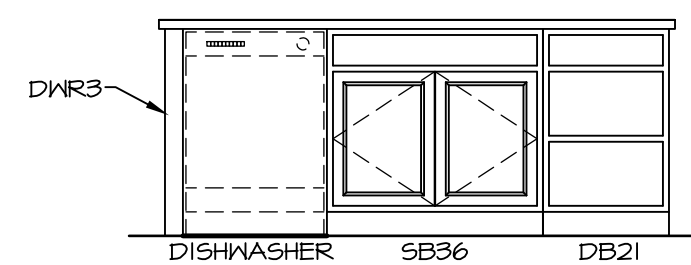
A KITCHEN ELEVATION

SCALE: 3/8" = 1'-0"



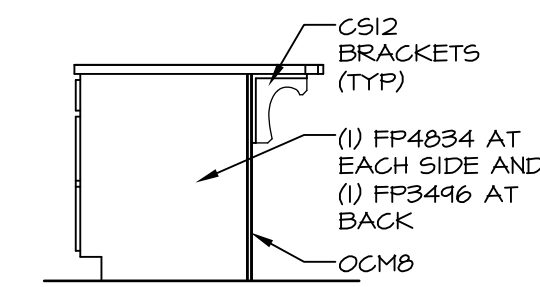
B KITCHEN ELEVATION

SCALE: 3/8" = 1'-0"



C KITCHEN ELEVATION

SCALE: 3/8" = 1'-0"

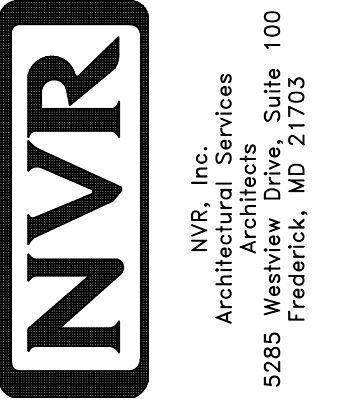


D KITCHEN ELEVATION

SCALE: 3/8" = 1'-0"

SHEET NO. **A-13**
MODEL **CAROLINA PLACE**
DRAWING TITLE **KITCHENS**
OPTION DESCRIPTION

SET NO. CNP00
VERSION 02
DRAWN BY
DATE: 6/7/16
OPTION



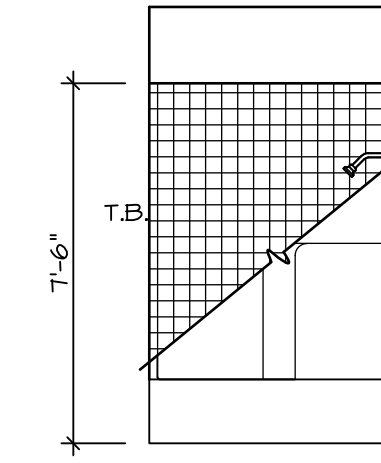
NVR, Inc., owner, expressly reserves its common law copyright and other property rights in these plans. These plans are not to be copied, reproduced, or otherwise used in any way without the express written consent of NVR, Inc.

REV. NO. | DATE

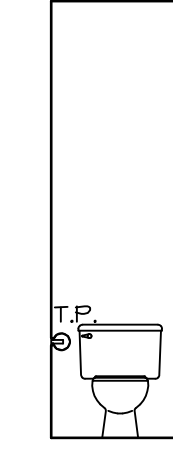
REMARKS

NOTES:

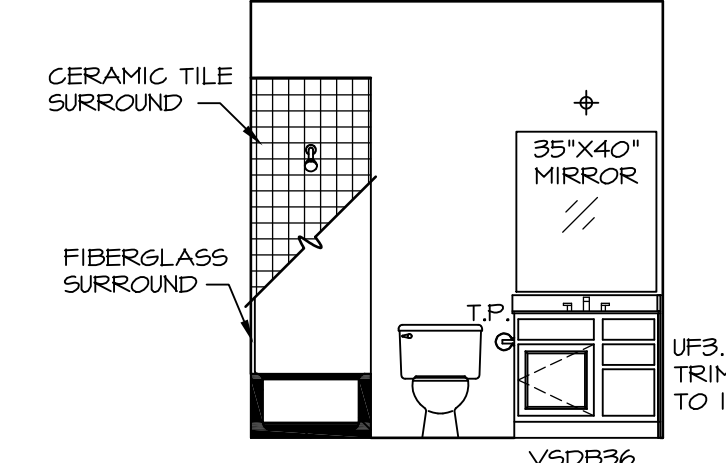
1. TEMPERED GLASS SHOWER ENCLOSURE WITH SWING DOOR OR OPTIONAL SLIDING DOOR BY DIVISION
2. TUB ACCESS PANELS PROVIDED AS NEEDED, ALL MATERIALS BY DIVISION
3. REFER TO SHEET IT-2 FOR TUB AND SHOWER DETAILS.
4. ALL VSDB24-42 DRAWERS TO BE SET ON RIGHT HAND.
5. BATH ELEVATIONS ARE SHOWN PER PLAN.



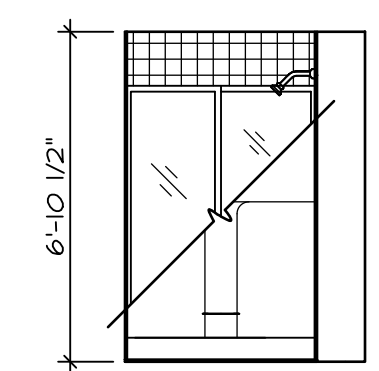
D BATH #1
SCALE: 1/4" = 1'-0"



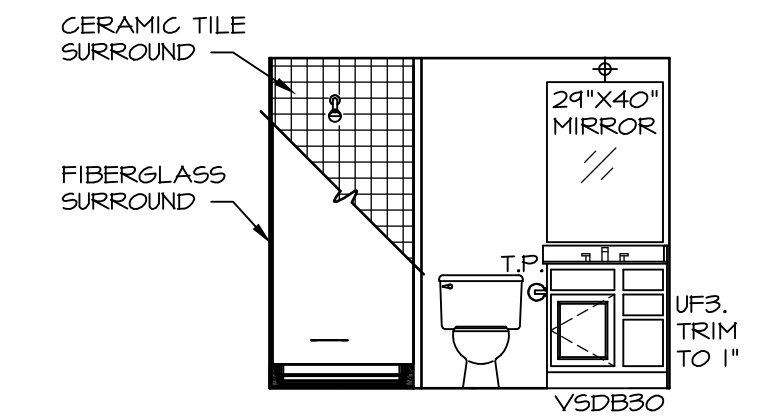
G OWNER'S BATH
SCALE: 1/4" = 1'-0"



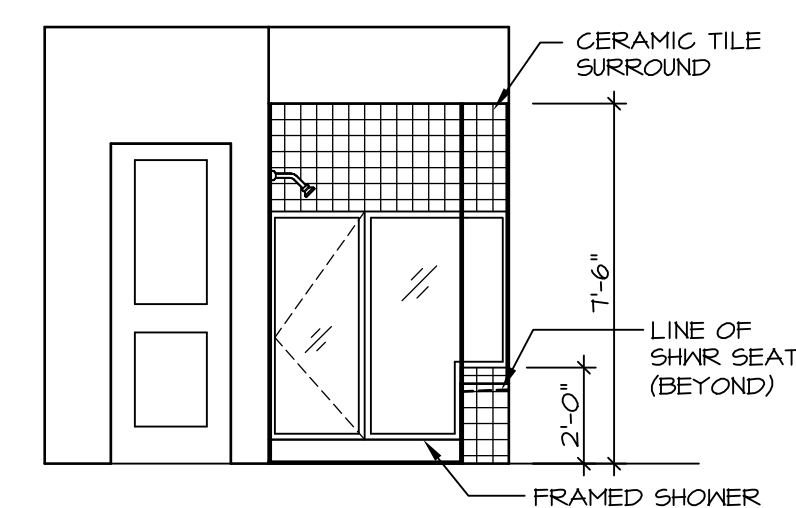
C BATH #1
SCALE: 1/4" = 1'-0"



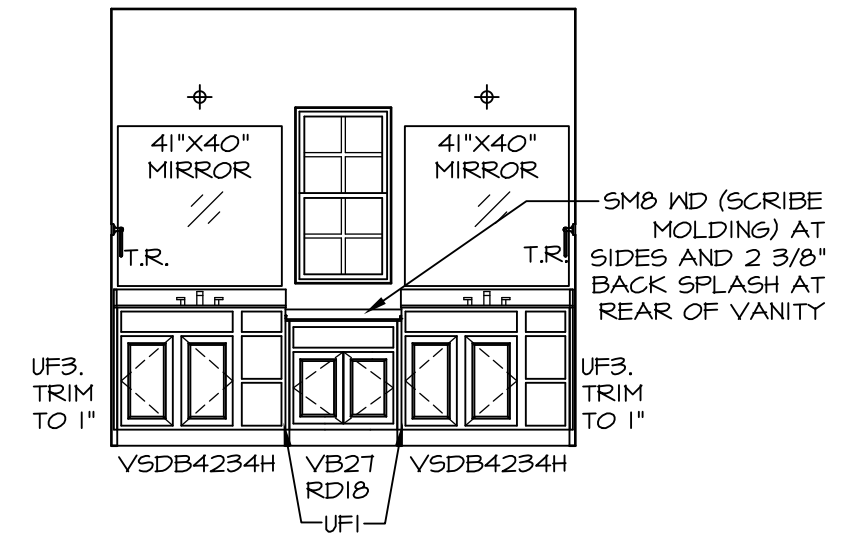
B BSMT. BATH
SCALE: 1/4" = 1'-0"



A BSMT. BATH
SCALE: 1/4" = 1'-0"



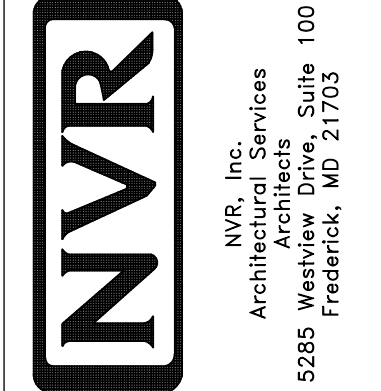
J OWNER'S BATH
SCALE: 1/4" = 1'-0"



H OWNER'S BATH
SCALE: 1/4" = 1'-0"

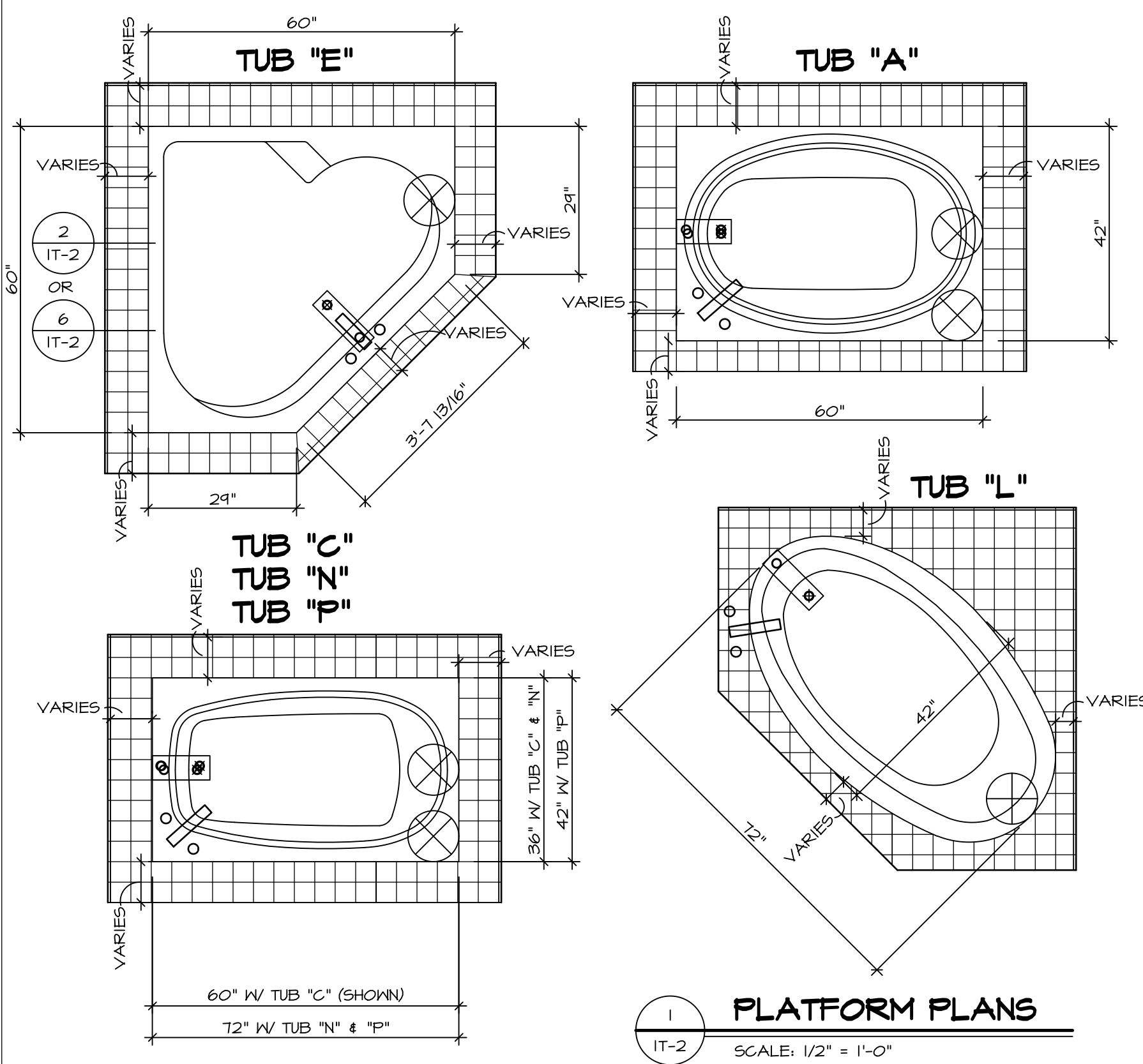
REV. NO.	DATE	REMARKS
1	08/04/16	N-DRAWING ALIGNMENT

NVR, Inc., owner, expressly reserves its common law copyright and other property rights in these plans. These plans are not to be copied, reproduced, or transmitted in any form or by any means, nor are they to be assigned to any third party, without first obtaining the expressed written consent of NVR, Inc.



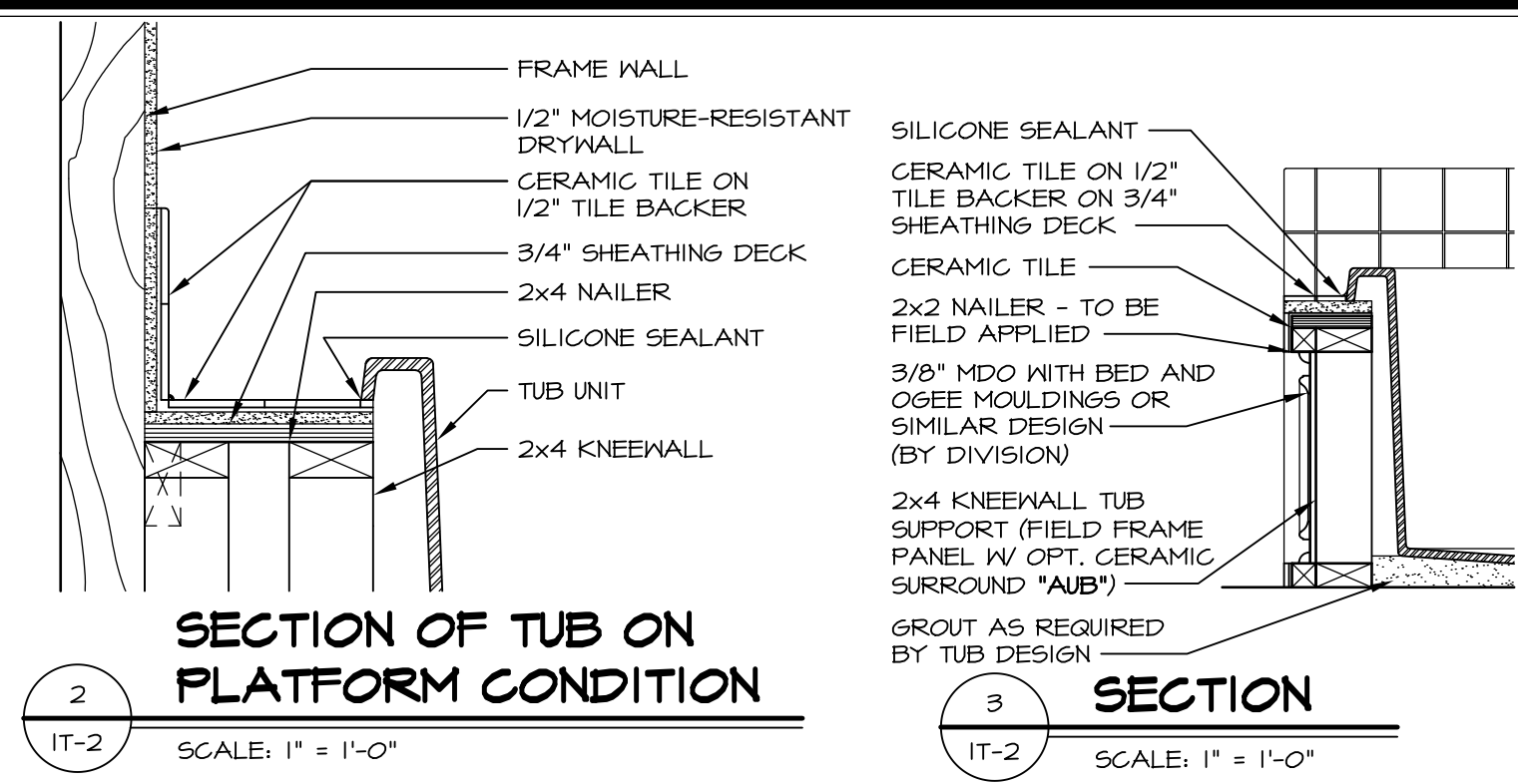
SET NO. CNP00	VERSION 02
DRAWN BY	DATE: 6/7/16
OPTION	OPTION

MODEL	CAROLINA PLACE
DRAWING TITLE	BATH ELEVATIONS
OPTION DESCRIPTION	

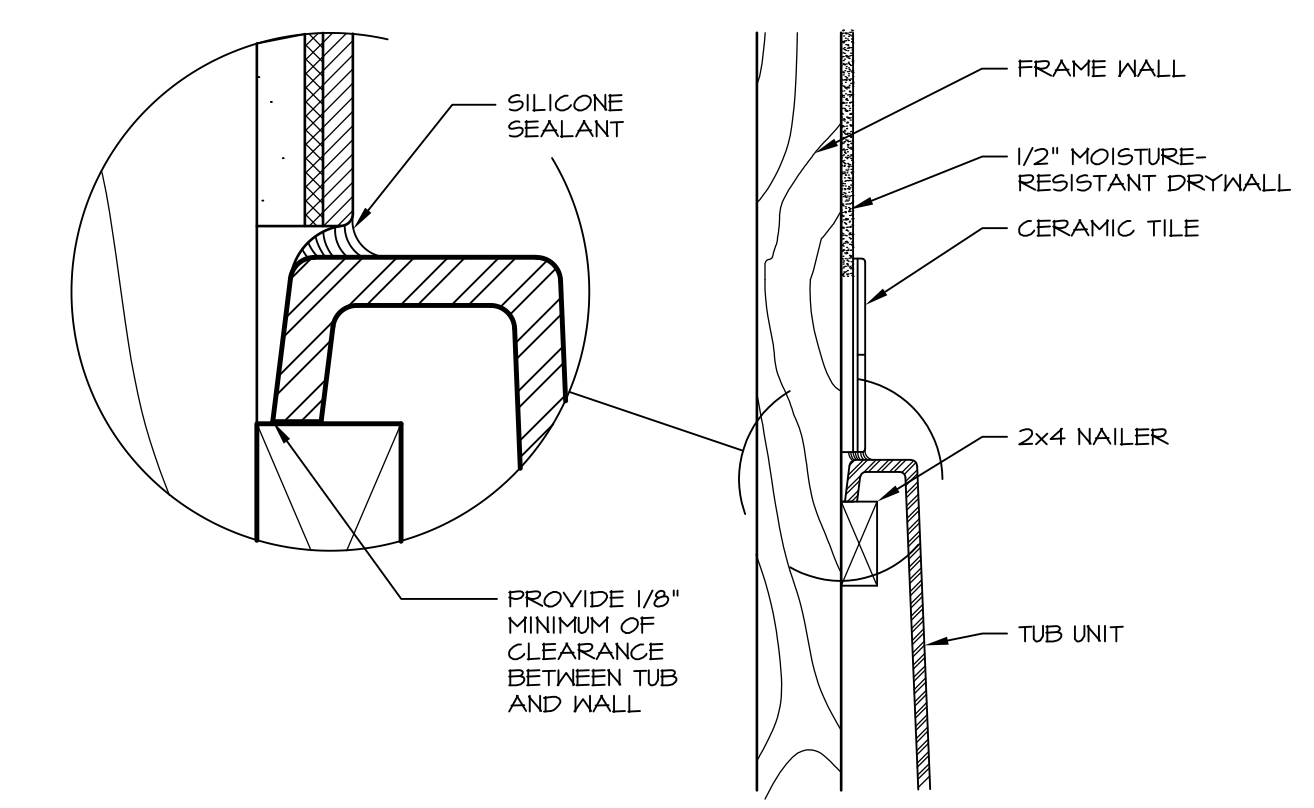


1 PLATFORM PLANS
SCALE: 1/2" = 1'-0"

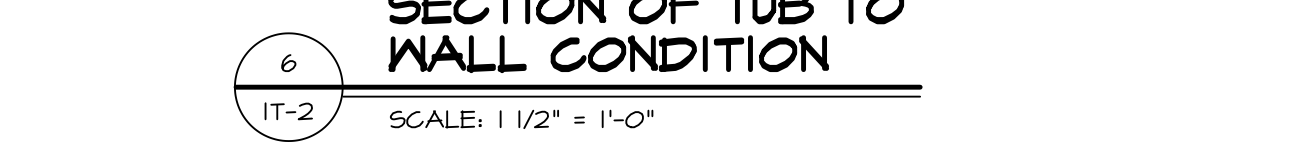
TUB	MANUF.	HEIGHT	WIDTH	LENGTH	TUB DECK PANEL HEIGHT
"A"	KOHLER/STERLING	18 3/4"	42"	60"	17 1/8"
"C"	KOHLER/STERLING	18 3/4"	36"	60"	17 1/8"
"E"	KOHLER/STERLING	19 1/2"	60"	60"	17 7/8"
"L"	KOHLER/STERLING	18 1/2"	42"	72"	16 7/8"
"N"	KOHLER/STERLING	18 3/4"	36"	72"	17 1/8"
"P"	KOHLER/STERLING	18 3/4"	42"	72"	17 1/8"



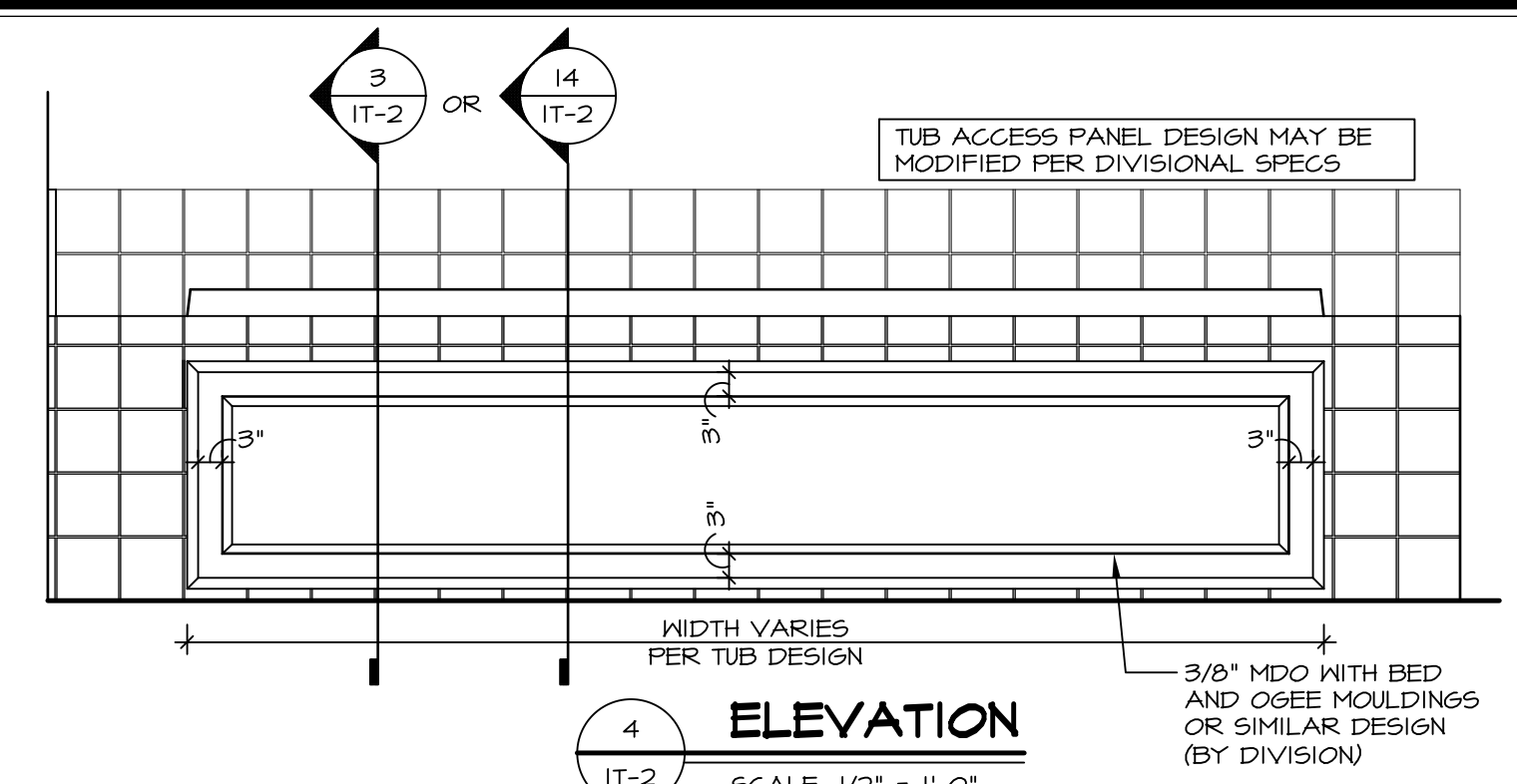
2 SECTION OF TUB ON PLATFORM CONDITION
SCALE: 1" = 1'-0"



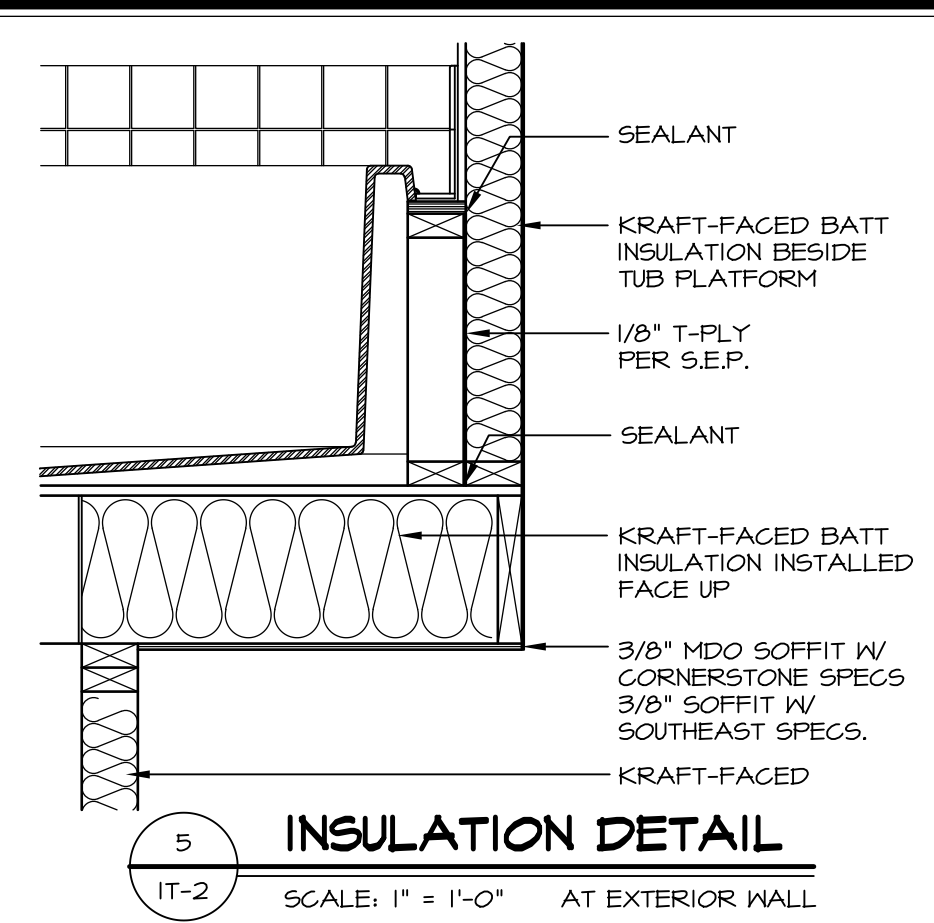
3 SECTION
SCALE: 1" = 1'-0"



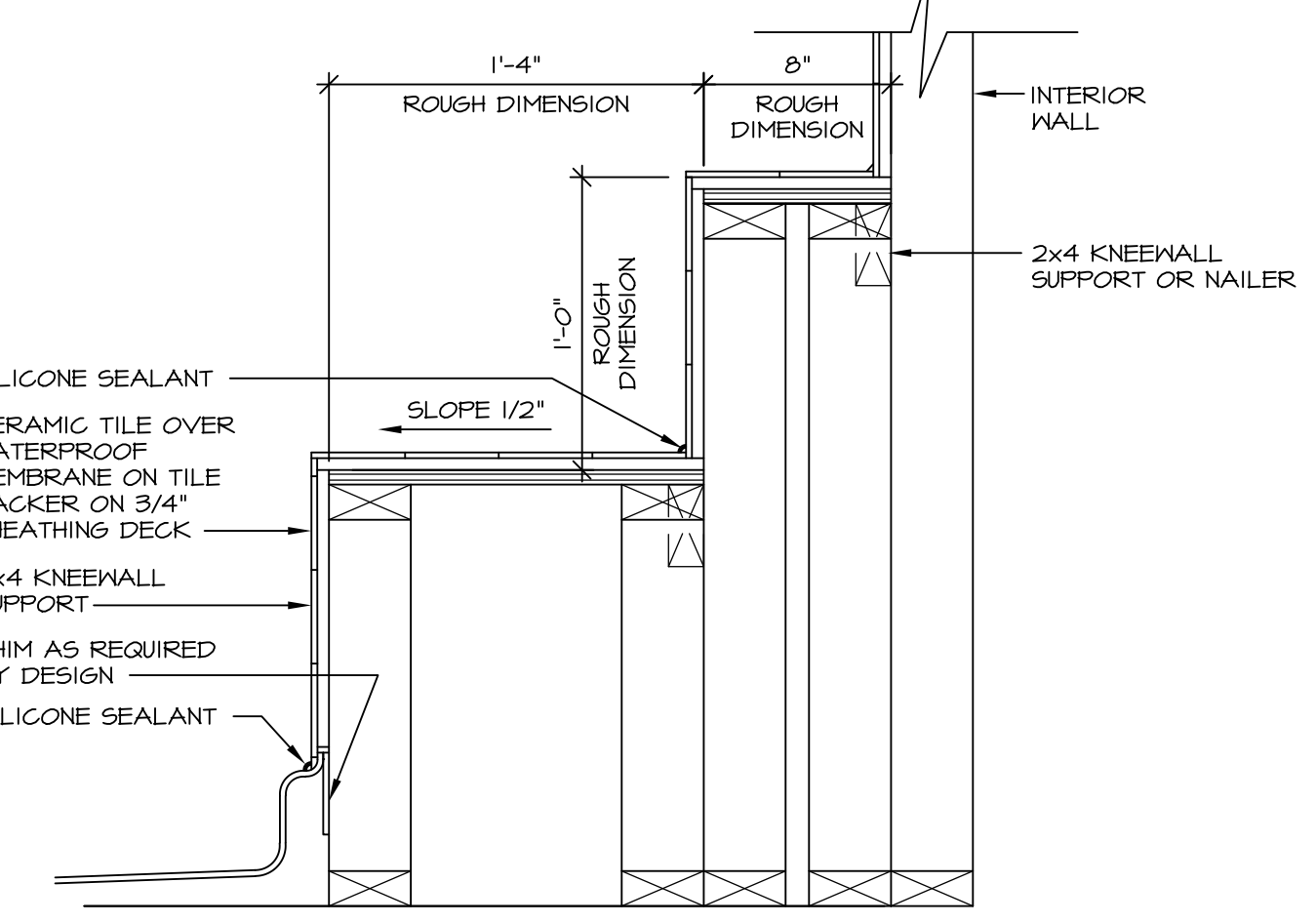
6 SECTION OF TUB TO WALL CONDITION
SCALE: 1 1/2" = 1'-0"



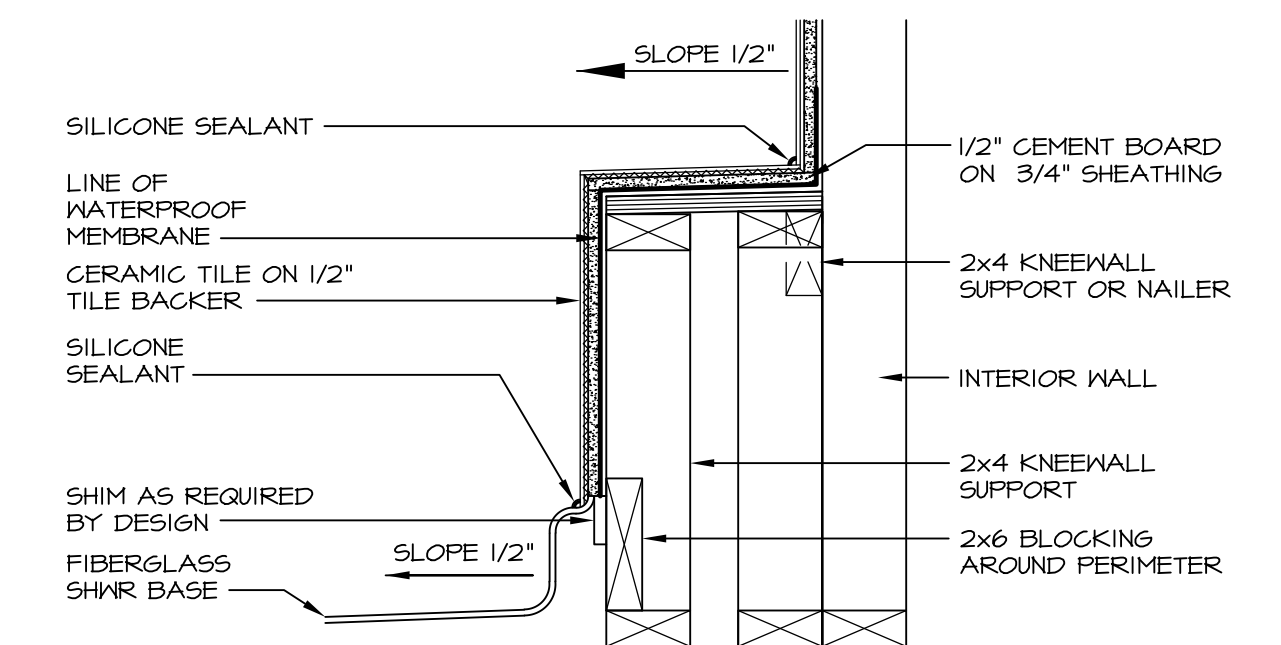
4 ELEVATION
SCALE: 1/2" = 1'-0"



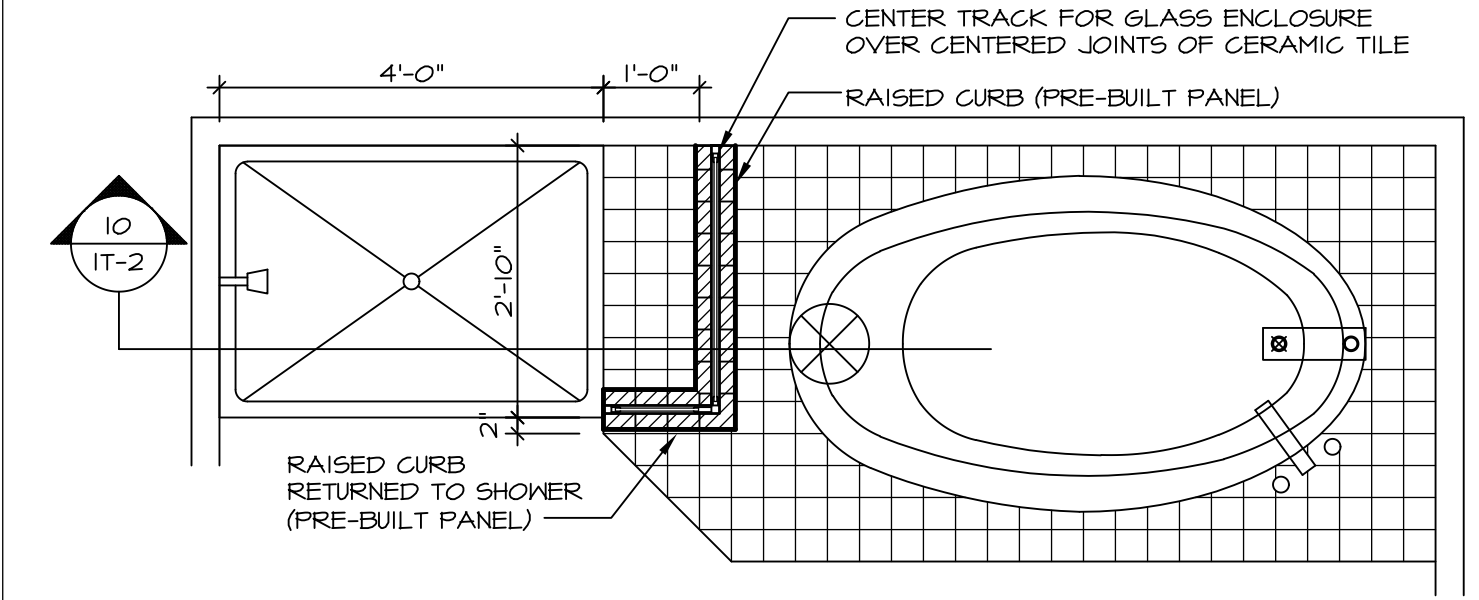
5 INSULATION DETAIL
SCALE: 1" = 1'-0" AT EXTERIOR WALL



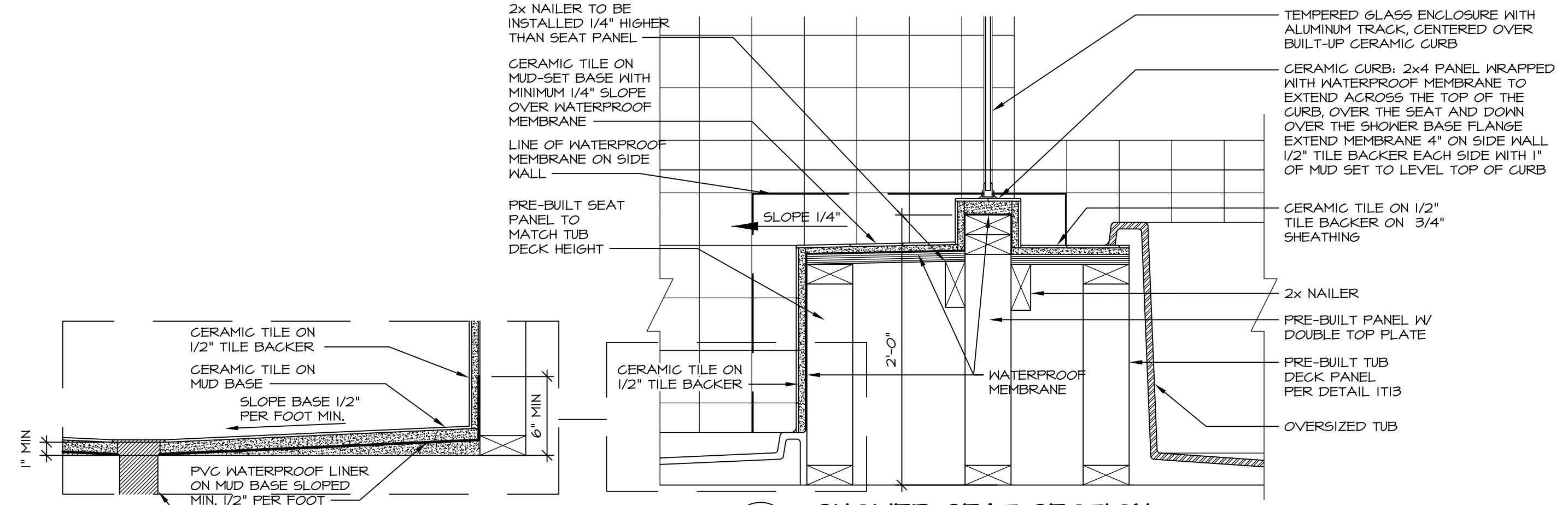
7 SECTION OF SHOWER SEAT AND SHELF
SCALE: 1 1/2" = 1'-0"



8 SECTION OF SHOWER SEAT
SCALE: 1-1/2" = 1'-0" FIBERGLASS SHOWER BASE



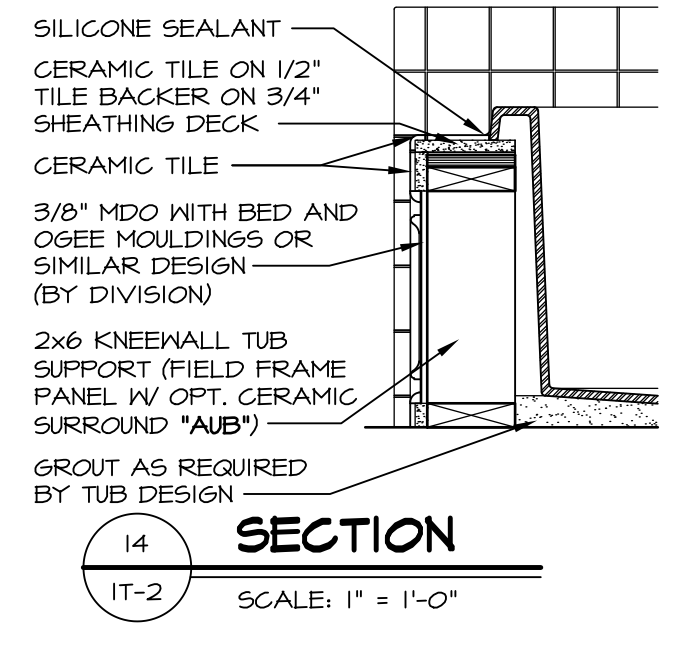
9 SHOWER SEAT PLAN / DETAIL
SCALE: 1/2" = 1'-0"



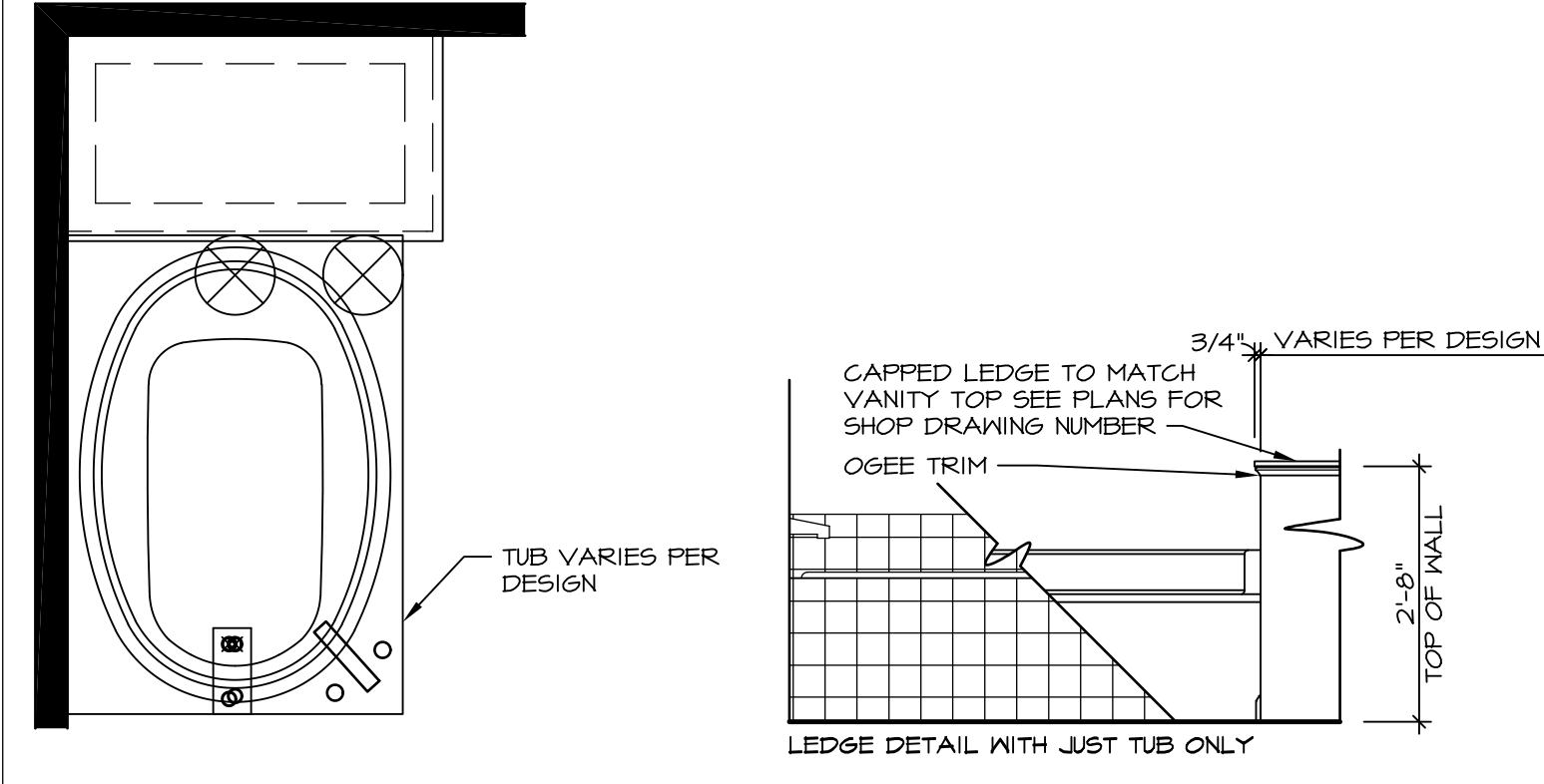
10 SHOWER SEAT SECTION
SCALE: 1-1/2" = 1'-0"



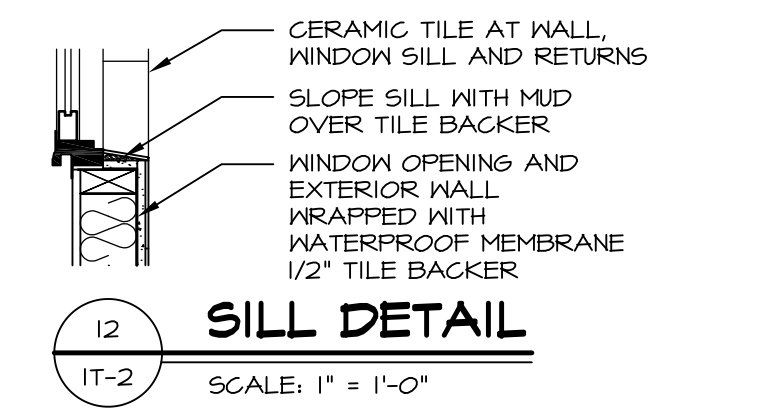
11 ALTERNATE SHOWER PAN DETAIL



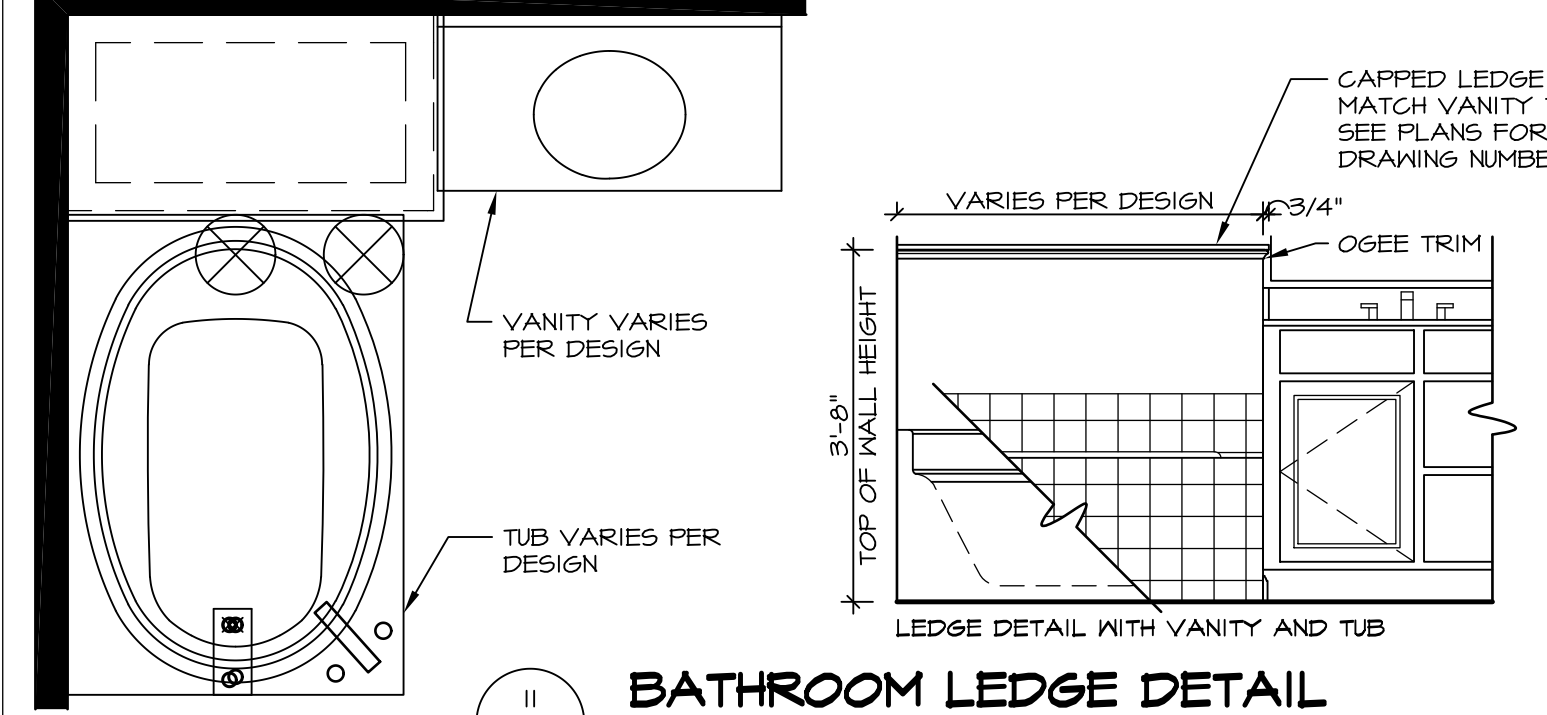
14 SECTION
SCALE: 1" = 1'-0"



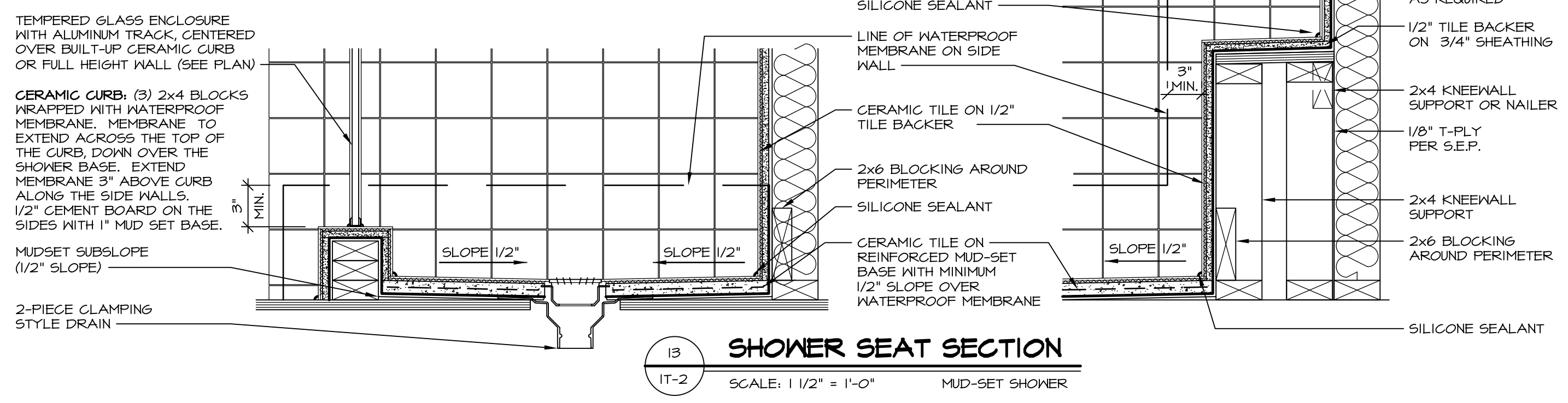
12 BATHROOM LEDGE DETAIL
SCALE: 1" = 1'-0"



13 SILL DETAIL
SCALE: 1" = 1'-0"



11 BATHROOM LEDGE DETAIL
SCALE: 1/2" = 1'-0"



13 SHOWER SEAT SECTION
SCALE: 1 1/2" = 1'-0" MUD-SET SHOWER

REVISIONS

REV. NO.	DATE	DESCRIPTION
5/11/17	5/11/17	REVISOR: REVISED DETAIL 1 AND 11 TO REMOVE TUB ACCESS PANEL REF. (CBS #15 5414)

NVR, Inc., owner, expressly reserves its common law copyright and other property rights in these plans. These plans are not to be copied, reproduced, or otherwise used in any way without the written consent of NVR, Inc. No part of these plans may be reproduced or transmitted in any form or by any means electronic, mechanical, photocopying, recording, or by any information storage and retrieval system, without first obtaining the expressed written consent of NVR, Inc.

NVR
NVR, Inc.
Architectural Services
5285 Westpark Drive, Suite 100
Frederick, MD 21703

SET NO. NVR
VERSION
DRAWN BY
DATE:
OPTION

MODEL
STANDARD DETAILS
DRAWING TITLE
INTERIOR TRIM DETAILS
BATH DETAILS
OPTION DESCRIPTION

SHEET NO.
IT-2

C:\Users\epeterson\AppData\Local\Temp\XpPublish_4544\IT2.dwg 05/11/17 - 7:12 am