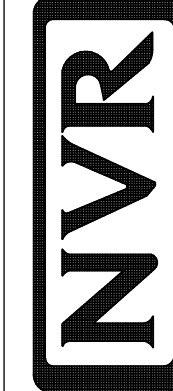


**1**  
A-5 **PLUMBING PLAN**  
SCALE: 1/4" = 1'-0"

SHEET NO. <b>A-5</b>	MODEL <b>CAROLINA PLACE</b>	SET NO. CNPOO VERSION 02
OPTION DESCRIPTION <b>36</b>	DRAWING TITLE <b>PLUMBING PLAN</b>	DRAWN BY DATE: OPTION



NVR, Inc.  
Architectural Services  
Architects  
5285 Washington Blvd. Suite 100  
Frederick, MD 21703

NVR, Inc., owner, expressly reserves its common law copyright and other property rights in these plans. These plans are not to be used, copied, or reproduced in any manner without the express written consent of NVR, Inc. nor are they to be assigned to any third party, without first obtaining the expressed written consent of NVR, Inc.

REV. NO.	DATE	REMARKS

**LEGEND**

- BEARING WALL
- NON BEARING WALL
- INDICATES BEARING FROM POINT-LOAD ABOVE JACKS
- BEAM/HEADER
- PAD FOOTING
- STEEL COLUMN
- PORTAL FRAME
- JOIST/TRUSS
- LVL
- ENGINEERING PAGE NUMBER

SEE FC DETAILS FOR FRAMING CONNECTORS

- FLOOR PLAN NOTES**
1. ALL HEADERS ARE (2) 2x6 W/ 2x4 WALLS OR (3) 2x6 W/ 2x6 WALLS, UNLESS OTHERWISE NOTED.
  2. ALL HEADERS TO HAVE (1) 2x4 OR 2x6 JACK EACH END, UNLESS OTHERWISE NOTED.
  3. ALL EXTERIOR WALLS TO BE 4" AND ALL INTERIOR WALLS TO BE 3 1/2", UNLESS OTHERWISE NOTED.
  4. HATCHED AREAS INDICATE DROPPED CEILINGS. ALL DROPPED CEILINGS ARE 12" UNLESS OTHERWISE NOTED. SEE "BRACED WALL PANEL DETAIL SHEET" FOR SPECIAL WALL FRAMING LOCATIONS AND HEADER SIZES, IF APPLICABLE.
  5. SEE STANDARD DETAIL CATEGORY "IT" SHEET(S) FOR INTERIOR TRIM DETAILS.
  6. SEE ARCHITECTURAL DETAIL SHEET "AD" FOR HOUSE SPECIFIC INTERIOR TRIM OPTION TABLE.
  7. ALL WINDOWS HAVE T-O 1/2" HEADER HEIGHT UNLESS OTHERWISE NOTED.

- GYPSUM NOTES**
- AT GARAGE:  
GYPSUM BOARD AT COMMON WALLS, CEILING, BEAM WRAPS AND SUPPORTS PER STANDARD DETAIL FA-1(b) FIRE ASSEMBLIES OR AS REQUIRED BY LOCAL CODE.
- AT STAIRS:  
1/2" GYPSUM BOARD AT UNDERSIDE OF STAIRS AND WALLS IN CLOSET

**LVL PLY TO PLY FASTENING SCHEDULE:**

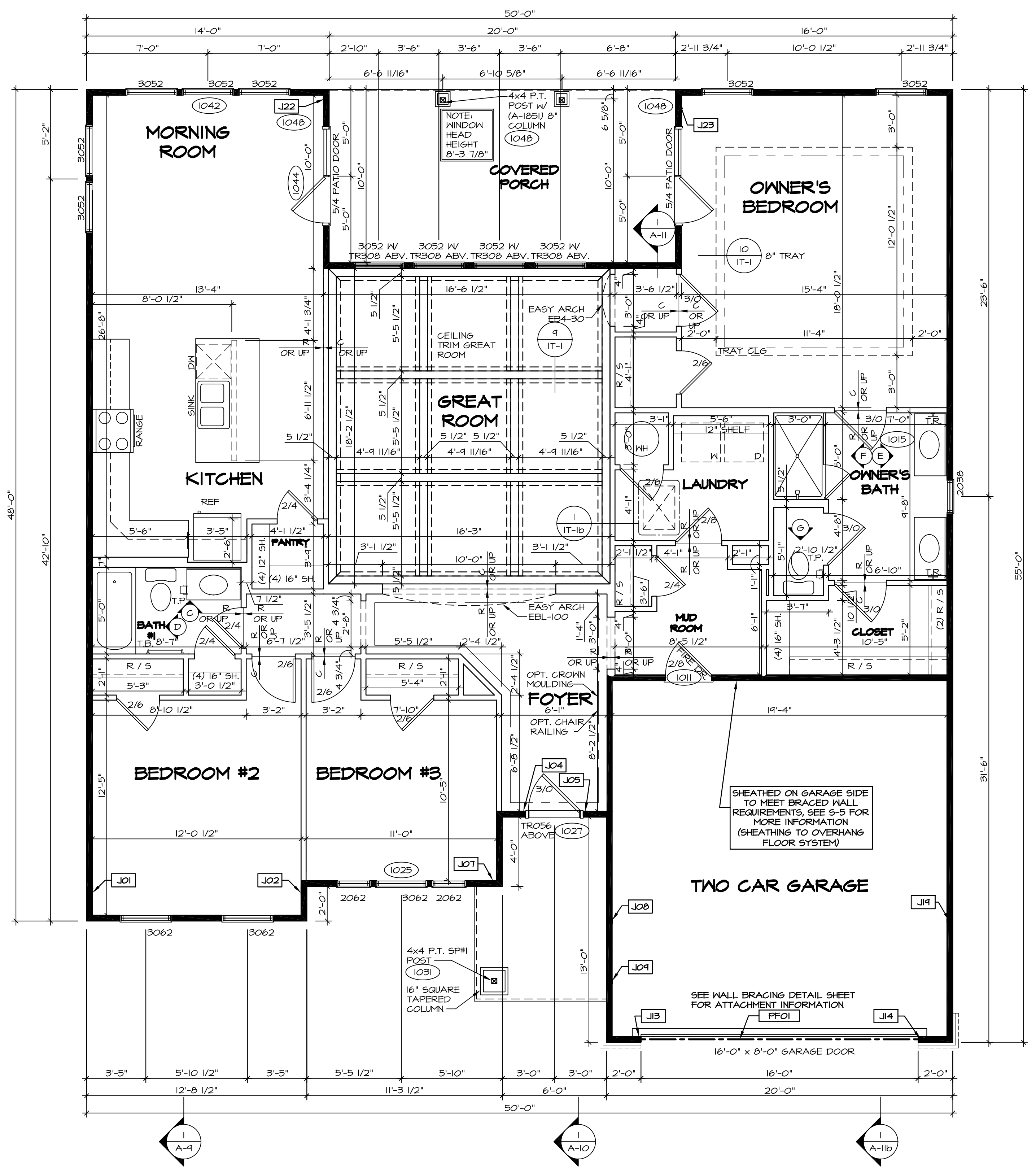
1.A - (2) PLY UP TO AND INCLUDING 11 7/8" TALL; FASTEN PLYS W/ (2) ROWS 16D NAILS AT 12" O.C.  
 2.A - (2) PLY 14" TO AND 18" TALL (INCLUSIVE); FASTEN PLYS W/ (3) ROWS 16D NAILS AT 12" O.C.  
 3.A - (2) PLY 20" TALL AND OVER; FASTEN PLYS W/ (4) ROWS 16D NAILS AT 12" O.C.  
 4.A - (3) PLY UP TO AND INCLUDING 11 7/8" TALL; FASTEN PLYS W/ (2) ROWS 16D NAILS AT 12" O.C. FROM EACH SIDE  
 5.A - (3) PLY 14" TO AND 18" TALL (INCLUSIVE); FASTEN PLYS W/ (3) ROWS 16D NAILS AT 12" O.C. FROM EACH SIDE  
 6.A - (3) PLY 20" TALL AND OVER; FASTEN PLYS W/ (4) ROWS 16D NAILS AT 12" O.C. FROM EACH SIDE

**FIRST FLOOR BEAM/HEADER SCHEDULE**

IDENTIFIER	DESCRIPTION	LENGTH	OPTIONS	ENG. NUM.	REMARKS
FF01	BEAM BUILT 2X12 - 2 PLY	14'-8"	6CB	1033	2-PLY, PORTAL FRAME

**FIRST FLOOR JACK SCHEDULE**

IDENTIFIER	DESCRIPTION	OPTIONS	ENG. NUM.	REMARKS
J01	JACK - (4) 2X4 SPH		1044	
J02	JACK - (4) 2X4 SPH		1044	
J04	JACK - (2) 2X4 SPF STUD GRADE		1027	
J05	JACK - (2) 2X4 SPF STUD GRADE		1027	
J07	JACK - (2) 2X4 SPF STUD GRADE	ELK	1031	
J08	JACK - (2) 2X4 SPF STUD GRADE	ELK	1044	
J09	JACK - (2) 2X4 SPF STUD GRADE	ELK	1031	
J13	JACK - (2) 2X4 SPF STUD GRADE	6CB	1033	
J14	JACK - (2) 2X4 SPF STUD GRADE	6CB	1033	
J14	JACK - (2) 2X4 SPF STUD GRADE	6CB, ELB, ELK	1044	
J23	JACK - (3) 2X4 SPF STUD GRADE	ECY, EPE	1047	



**FIRST FLOOR PLAN**  
SCALE: 1/4" = 1'-0"

**REVISIONS**

REV. NO.	DATE	DESCRIPTION
1	08/04/16	N-DRAWING ALIGNMENT

**MODEL**  
CAROLINA PLACE  
DRAWING TITLE  
FIRST FLOOR PLAN

**SHEET NO.**  
A-7

**OPTION DESCRIPTION**  
42

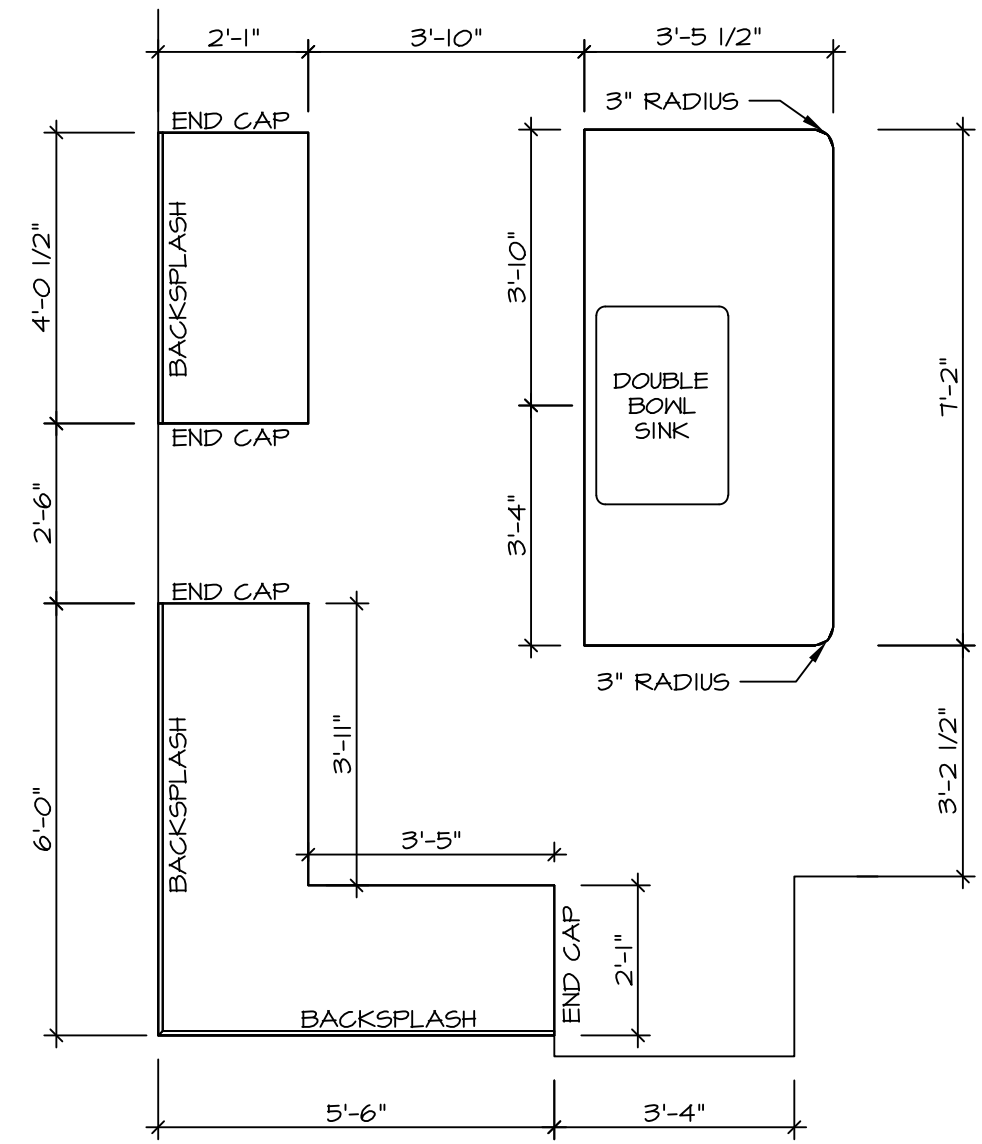
**REMARKS**

**REV. NO. DATE**  
08/04/16 N-DRAWING ALIGNMENT

NVR, Inc., owner, expressly reserves its common law copyright and other property rights in these plans. These plans are not to be altered, reproduced, or otherwise used in any way without the express written consent of NVR, Inc.

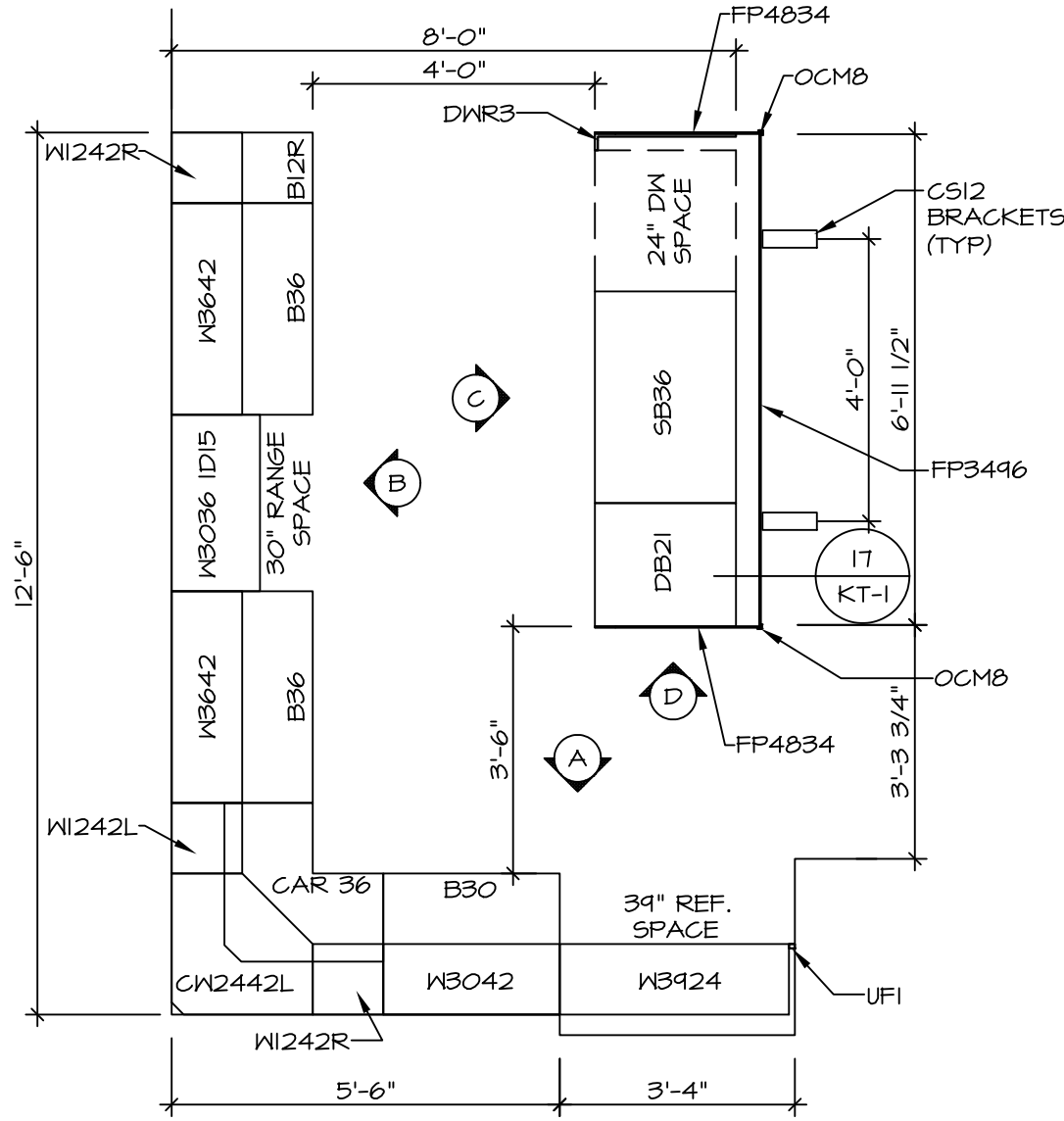
**NVR**  
NVR, Inc.  
Architectural Services  
Architects  
5285 Westpark Drive  
Frederick, MD 21703

C:\NVR\Solves\CAROLINA PLACE\_CNPOO\_02\DCY-EW-S088\457822\Sheets\02 A-7 PLAN\_1S.dwg 08/16/17 - 3:36 am



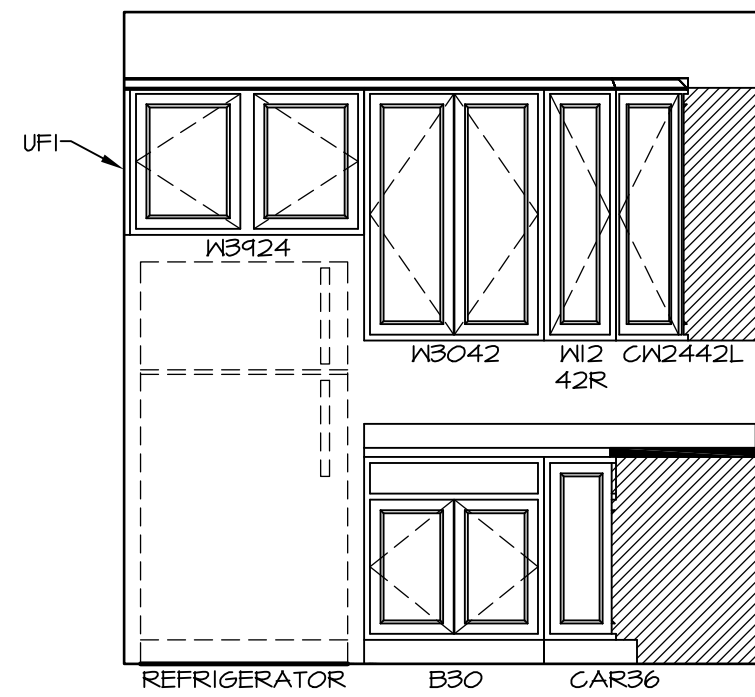
**KITCHEN COUNTERTOP  
PLAN - (KT-3117)**

2  
A-13 SCALE: 3/8" = 1'-0"

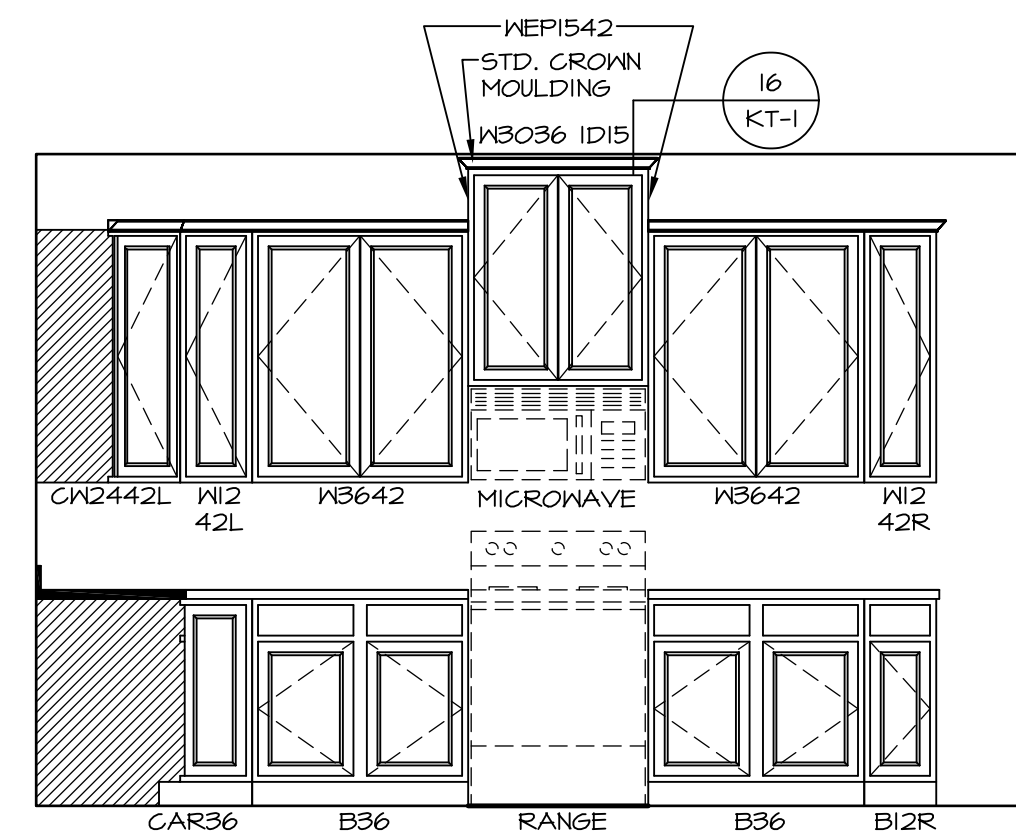


**KITCHEN CABINET  
PLAN - (KC-3117)**

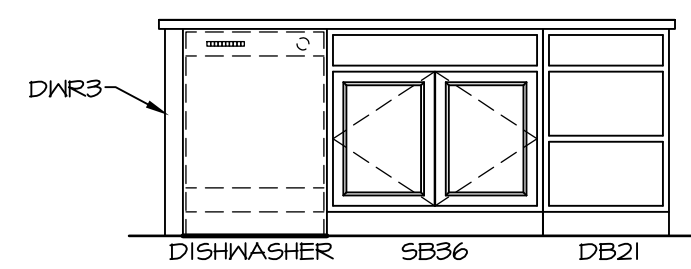
1  
A-13 SCALE: 3/8" = 1'-0"



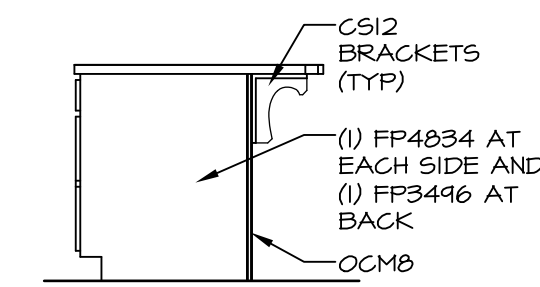
**A KITCHEN ELEVATION**  
SCALE: 3/8" = 1'-0"



**B KITCHEN ELEVATION**  
SCALE: 3/8" = 1'-0"



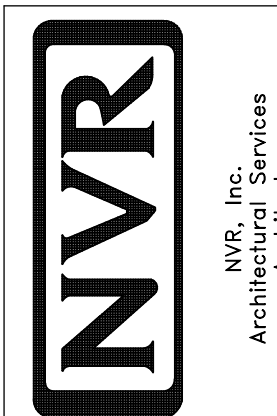
**C KITCHEN ELEVATION**  
SCALE: 3/8" = 1'-0"



**D KITCHEN ELEVATION**  
SCALE: 3/8" = 1'-0"

SHEET NO. **A-13**  
MODEL **CAROLINA PLACE**  
DRAWING TITLE **KITCHENS**  
OPTION DESCRIPTION

SET NO. **CNPOO**  
VERSION **02**  
DRAWN BY  
DATE: **6/7/16**  
OPTION

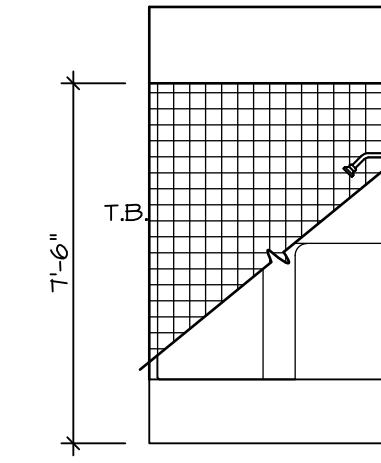


REV. NO. | DATE

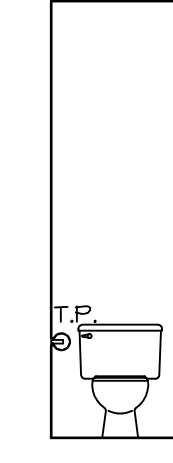
REMARKS

**NOTES:**

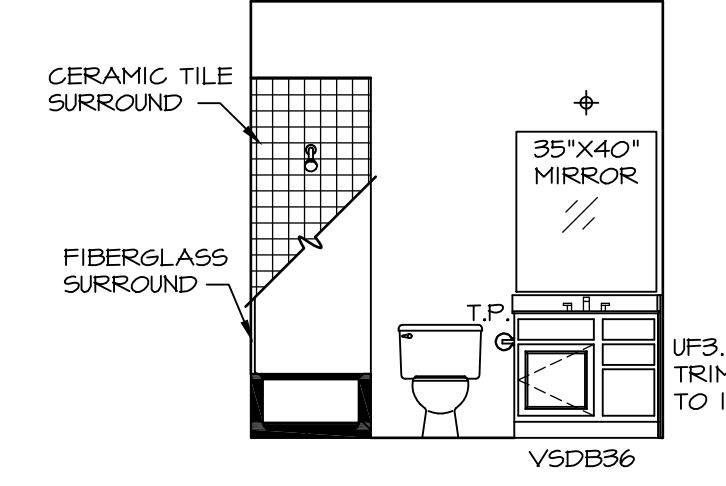
1. TEMPERED GLASS SHOWER ENCLOSURE WITH SWING DOOR OR OPTIONAL SLIDING DOOR BY DIVISION
2. TUB ACCESS PANELS PROVIDED AS NEEDED, ALL MATERIALS BY DIVISION
3. REFER TO SHEET IT-2 FOR TUB AND SHOWER DETAILS.
4. ALL VSDB24-42 DRAWERS TO BE SET ON RIGHT HAND.
5. BATH ELEVATIONS ARE SHOWN PER PLAN.



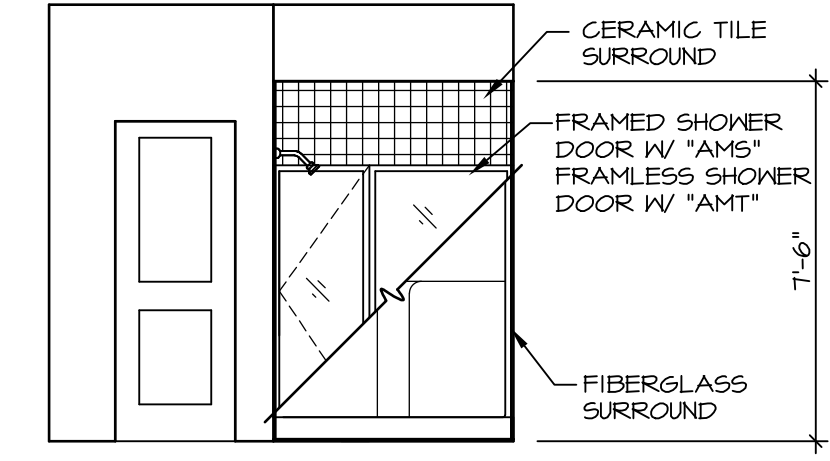
**D BATH #1**  
SCALE: 1/4" = 1'-0"



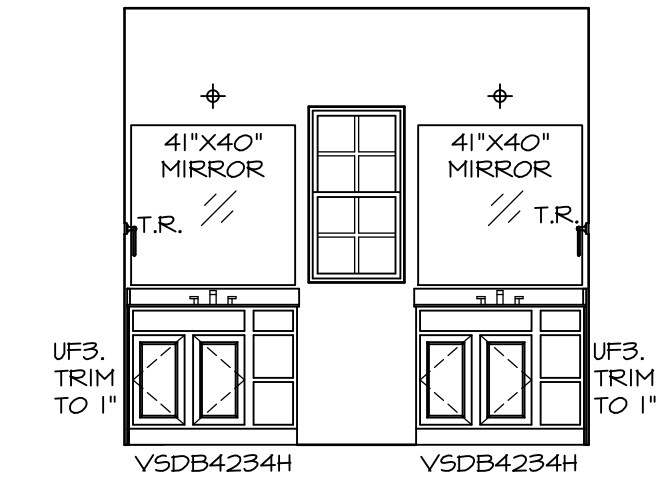
**G OWNER'S BATH**  
SCALE: 1/4" = 1'-0"



**C BATH #1**  
SCALE: 1/4" = 1'-0"



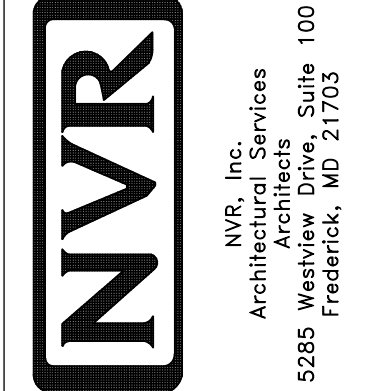
**F OWNER'S BATH**  
SCALE: 1/4" = 1'-0"



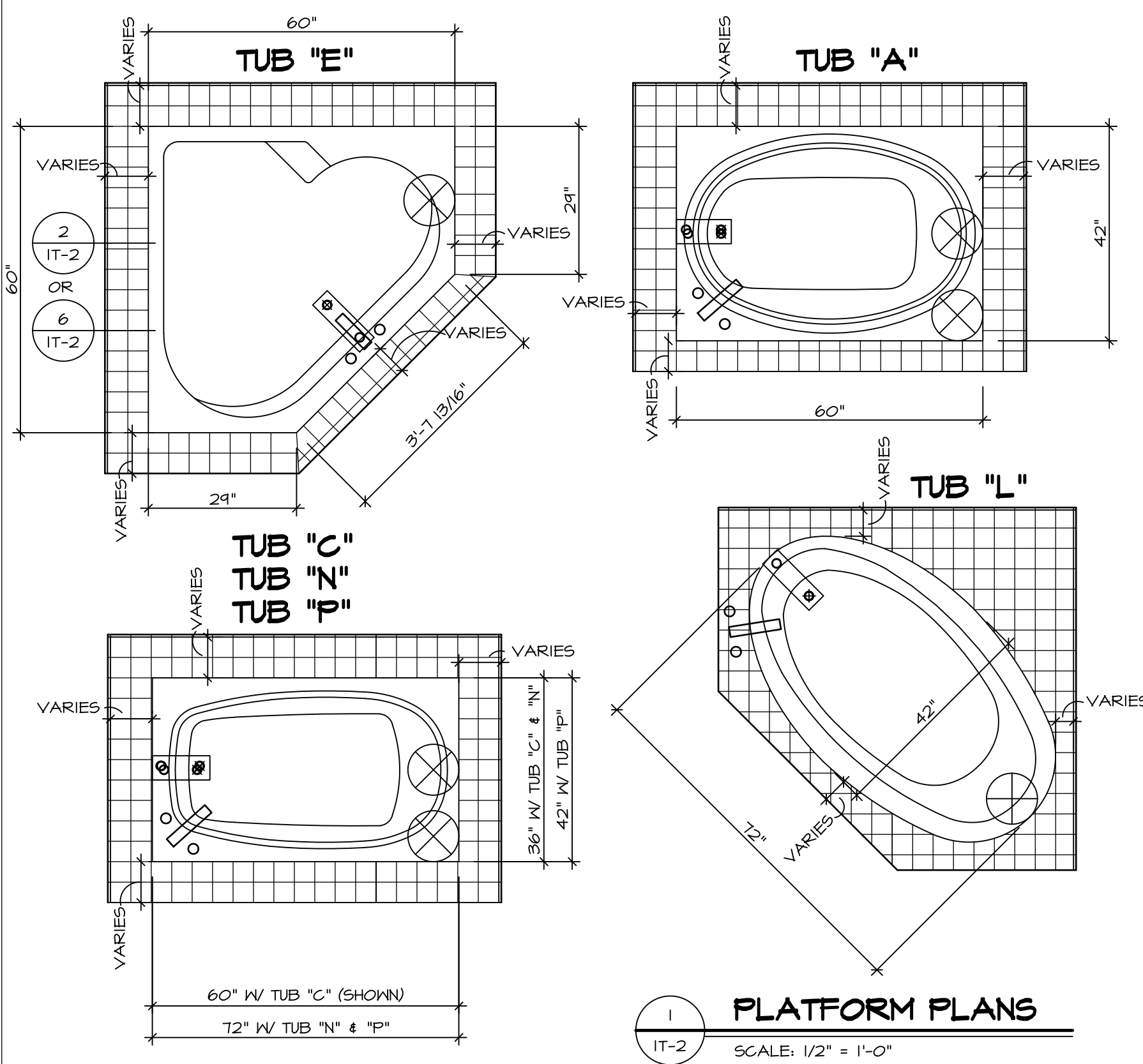
**E OWNER'S BATH**  
SCALE: 1/4" = 1'-0"

REV. NO.	DATE	REMARKS
1	08/04/16	N-DRAWING ALIGNMENT

NVR, Inc., owner, expressly reserves its common law copyright and other property rights in these plans. These plans are not to be copied, reproduced, or transmitted in any form or by any means, nor are they to be assigned to any third party, without first obtaining the expressed written consent of NVR, Inc.

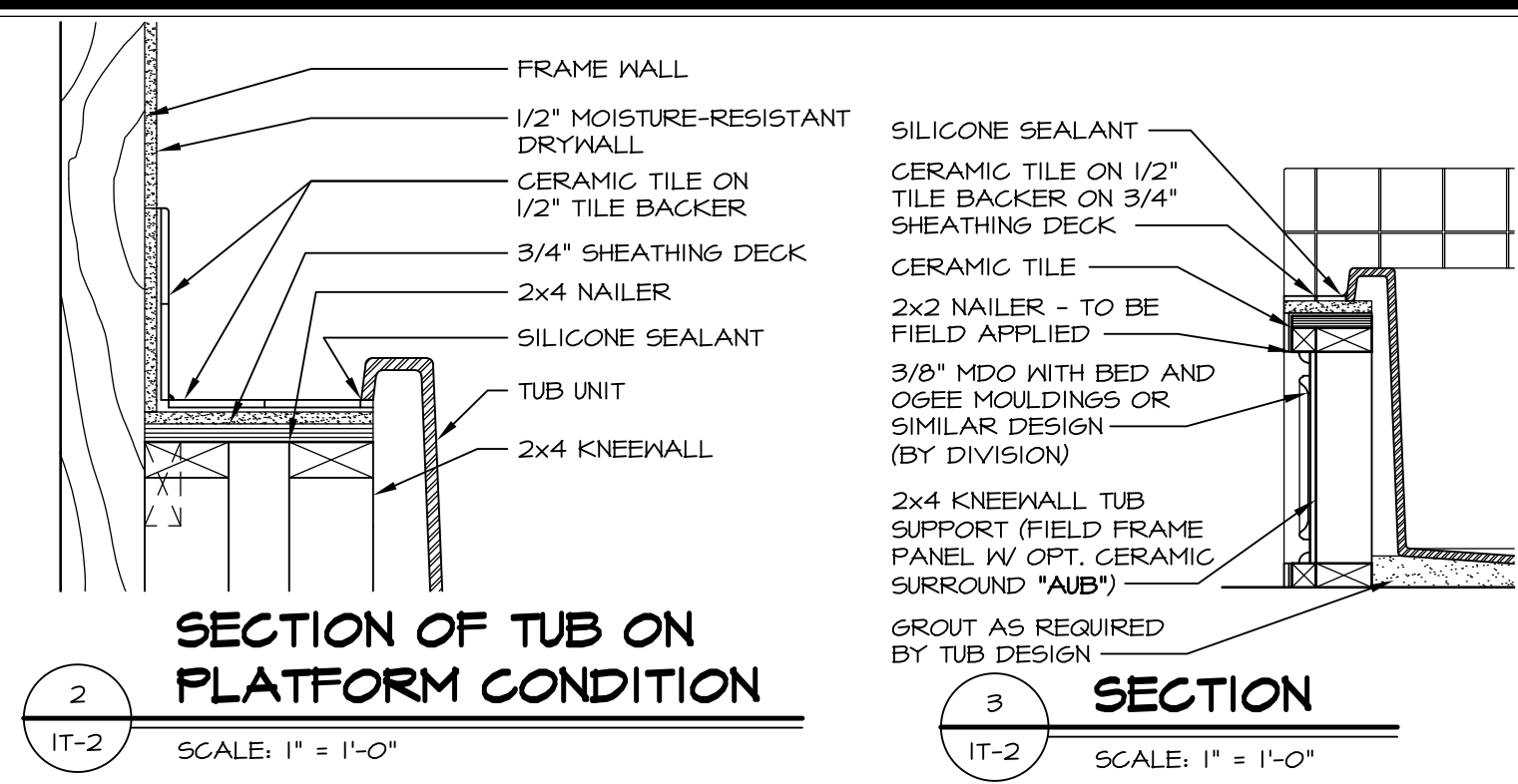


SHEET NO. <b>A-14</b>	MODEL <b>CAROLINA PLACE</b>	SET NO. <b>CNPOO</b>
	DRAWING TITLE <b>BATH ELEVATIONS</b>	VERSION <b>02</b>
OPTION DESCRIPTION <b>57</b>	DRAWN BY	DATE: <b>6/7/16</b>
	OPTION	

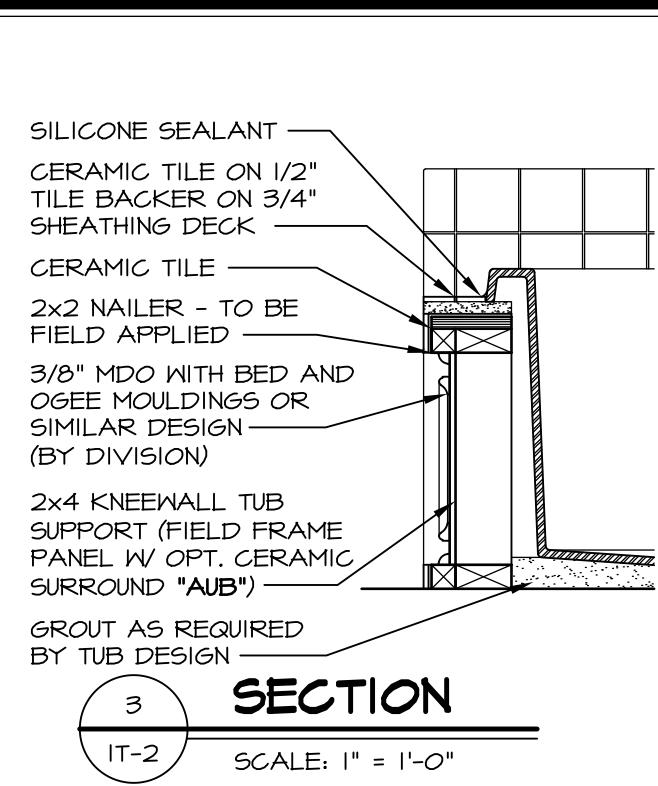


**1 PLATFORM PLANS**  
SCALE: 1/2" = 1'-0"

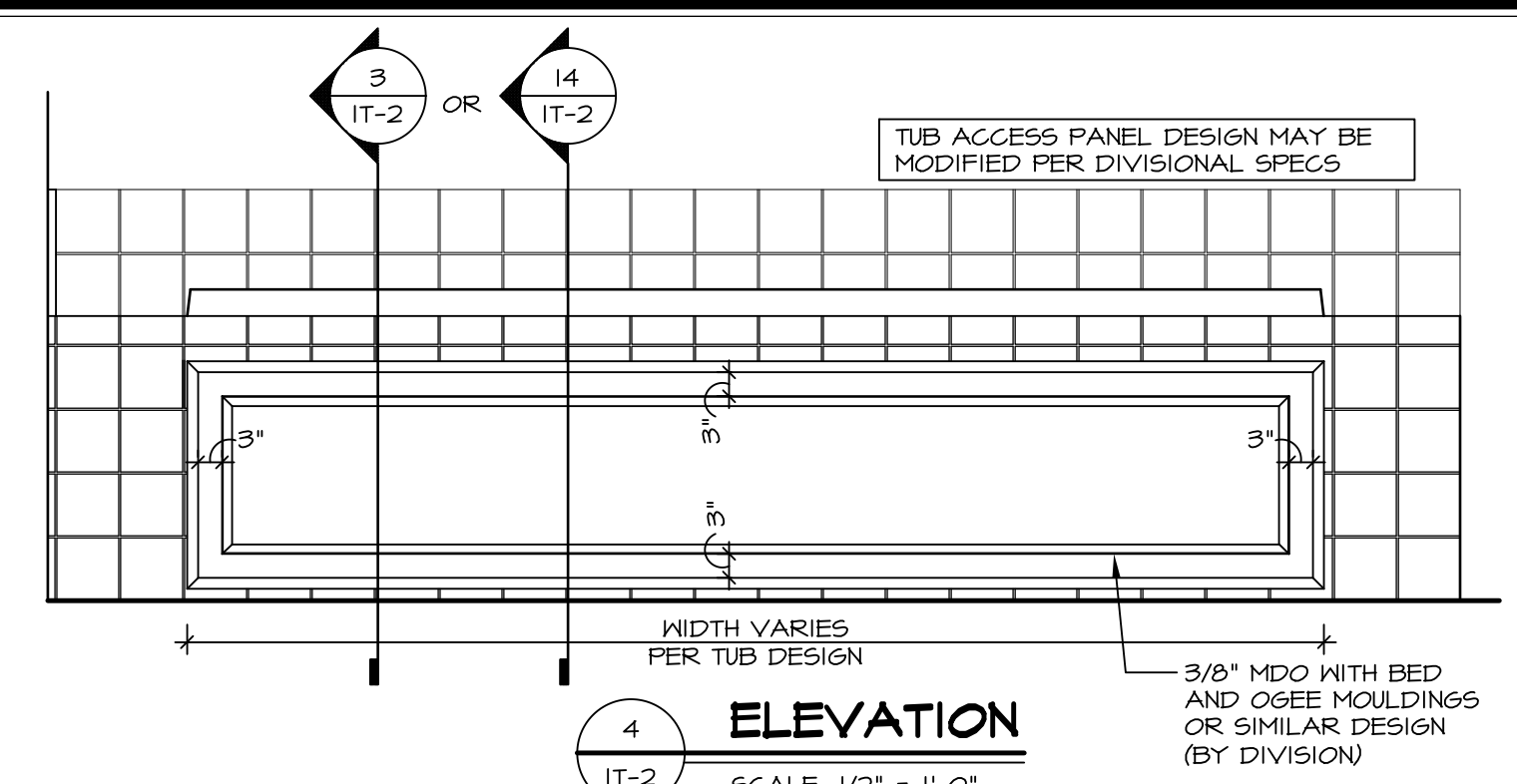
TUB	MANUF.	HEIGHT	WIDTH	LENGTH	TUB DECK PANEL HEIGHT
"A"	KOHLER/ STERLING	18 3/4"	42"	60"	17 1/8"
"C"	KOHLER/ STERLING	18 3/4"	36"	60"	17 1/8"
"E"	KOHLER/ STERLING	19 1/2"	60"	60"	17 7/8"
"L"	KOHLER/ STERLING	18 1/2"	42"	72"	16 7/8"
"N"	KOHLER/ STERLING	18 3/4"	36"	72"	17 1/8"
"P"	KOHLER/ STERLING	18 3/4"	42"	72"	17 1/8"



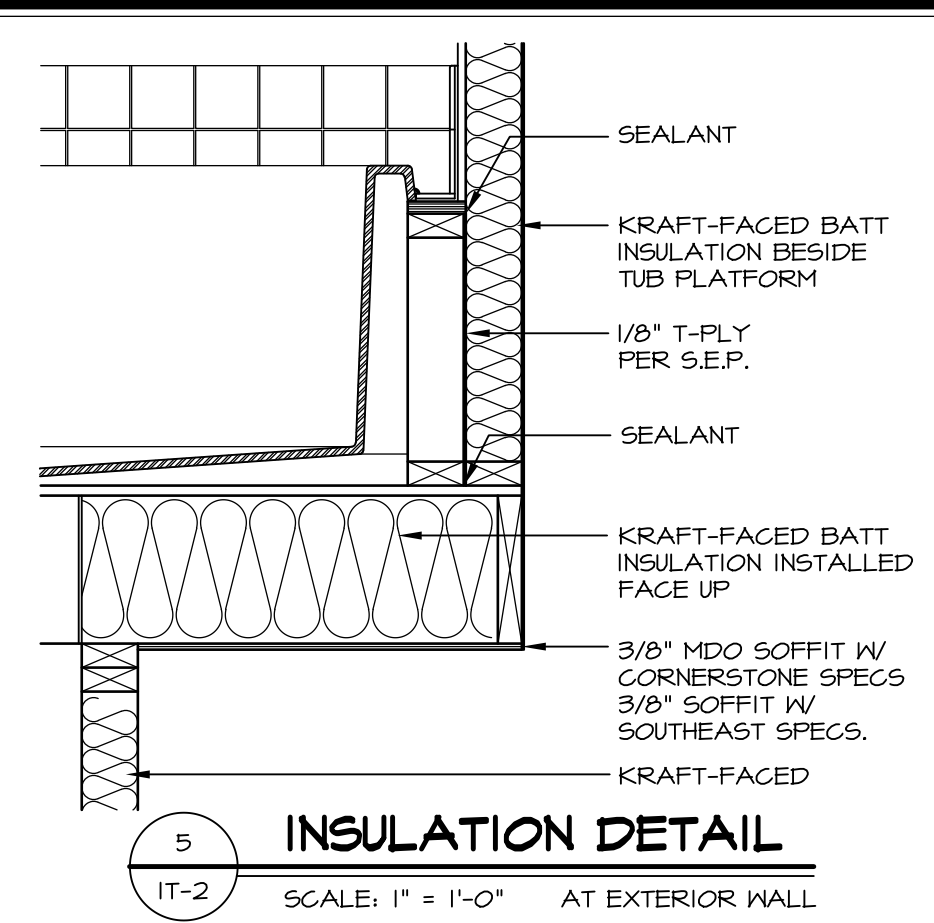
**2 SECTION OF TUB ON PLATFORM CONDITION**  
SCALE: 1" = 1'-0"



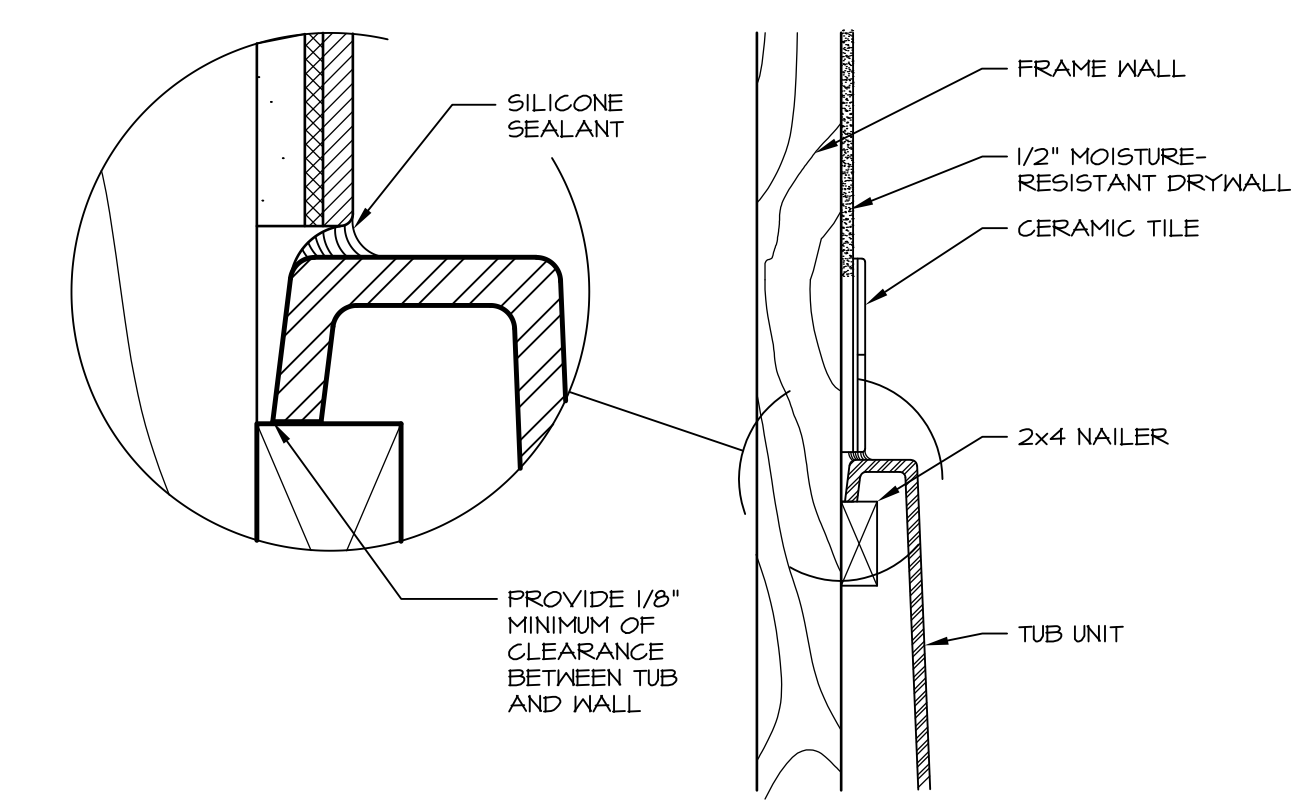
**3 SECTION**  
SCALE: 1" = 1'-0"



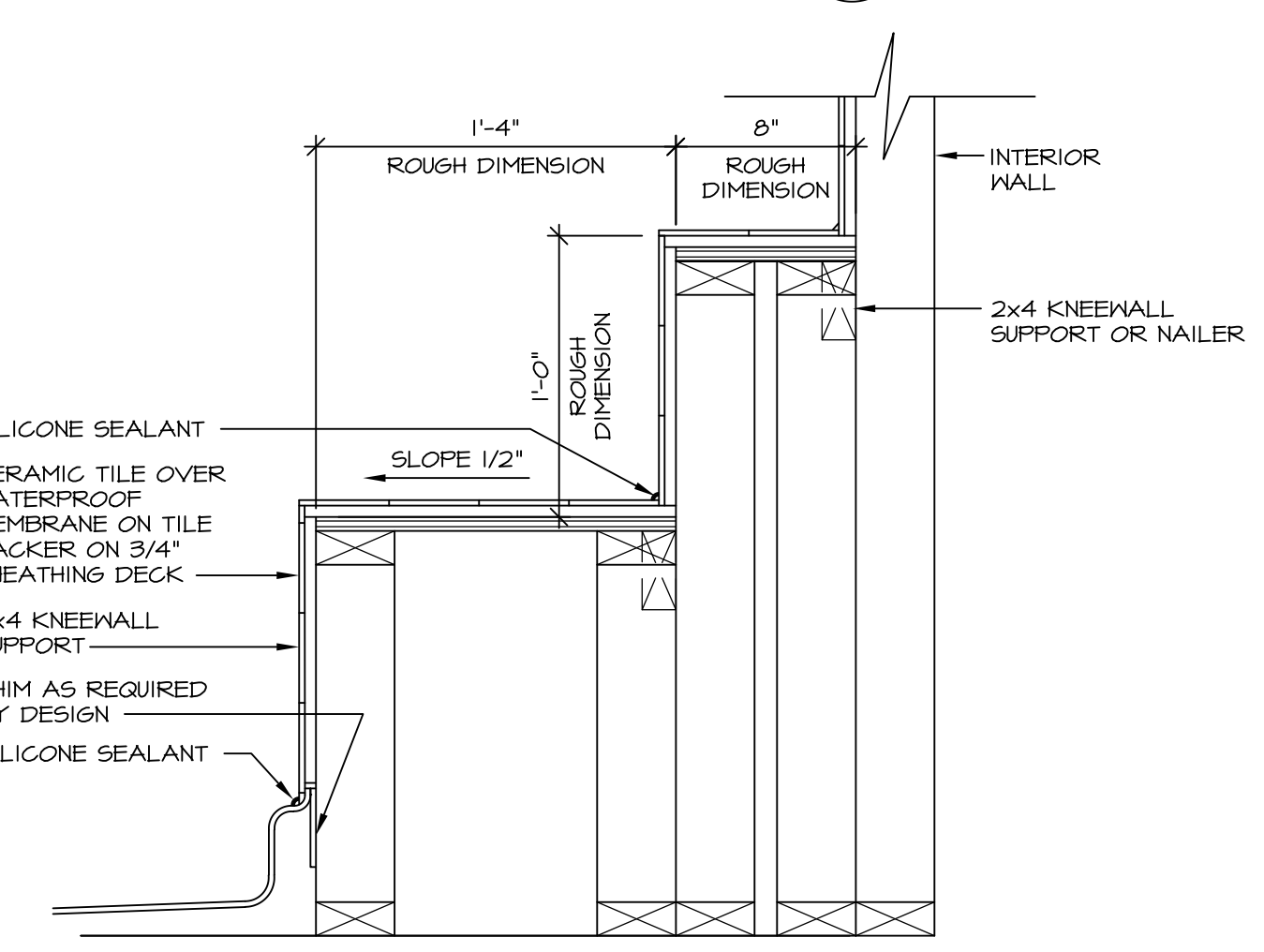
**4 ELEVATION**  
SCALE: 1/2" = 1'-0"



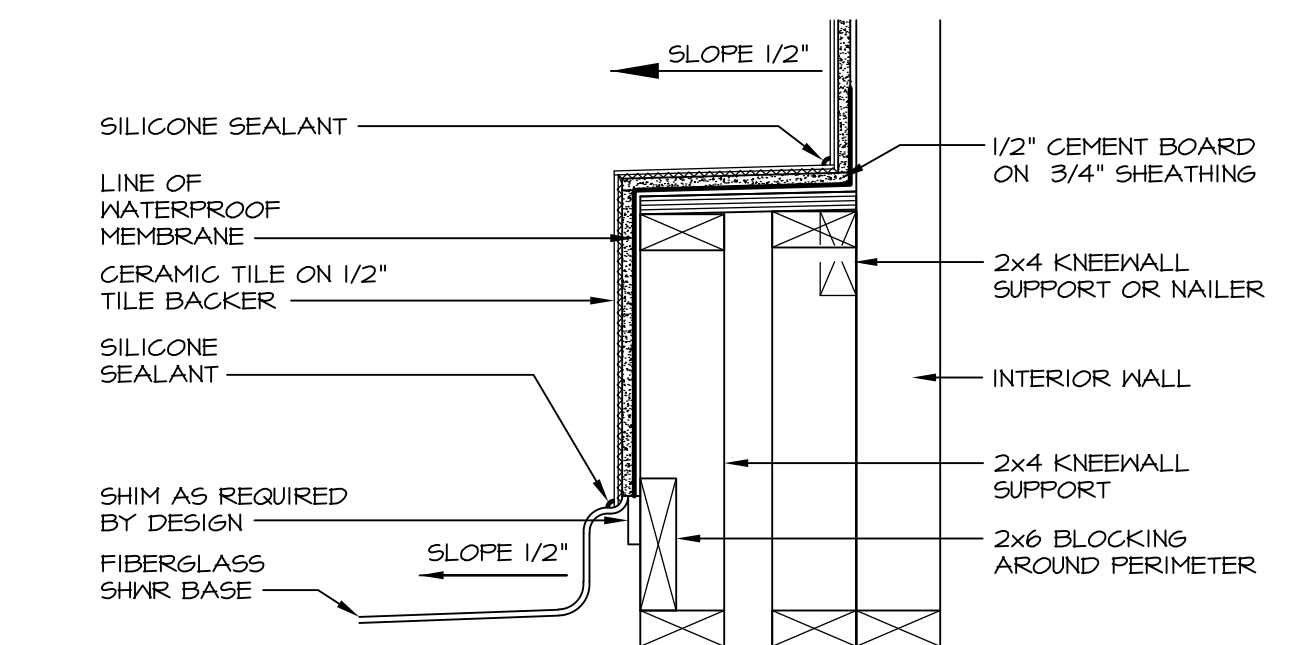
**5 INSULATION DETAIL**  
SCALE: 1" = 1'-0" AT EXTERIOR WALL



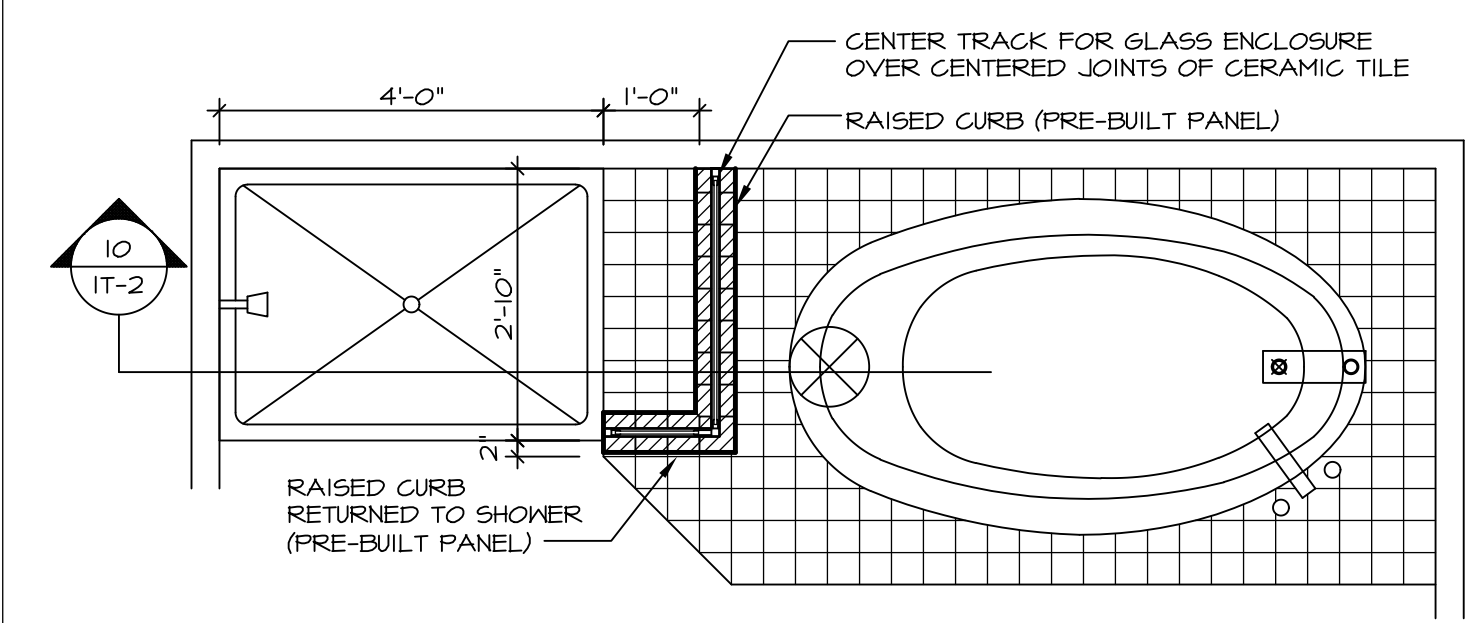
**6 SECTION OF TUB TO WALL CONDITION**  
SCALE: 1 1/2" = 1'-0"



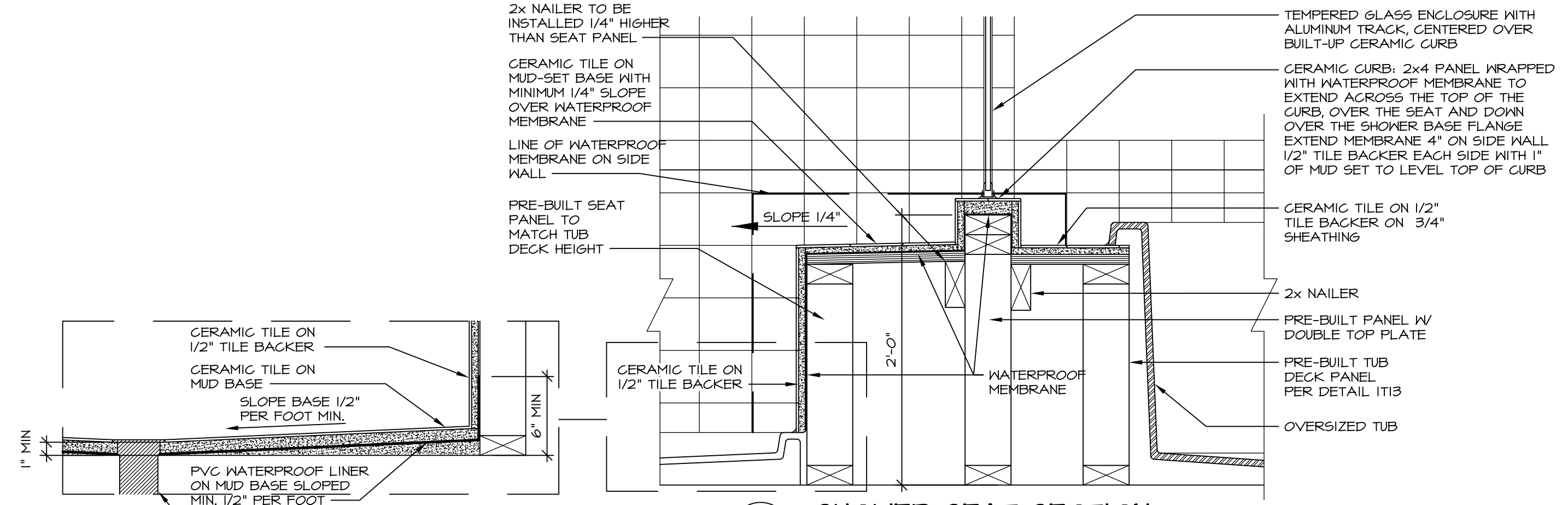
**7 SECTION OF SHOWER SEAT AND SHELF**  
SCALE: 1 1/2" = 1'-0"



**8 SECTION OF SHOWER SEAT**  
SCALE: 1-1/2" = 1'-0" FIBERGLASS SHOWER BASE



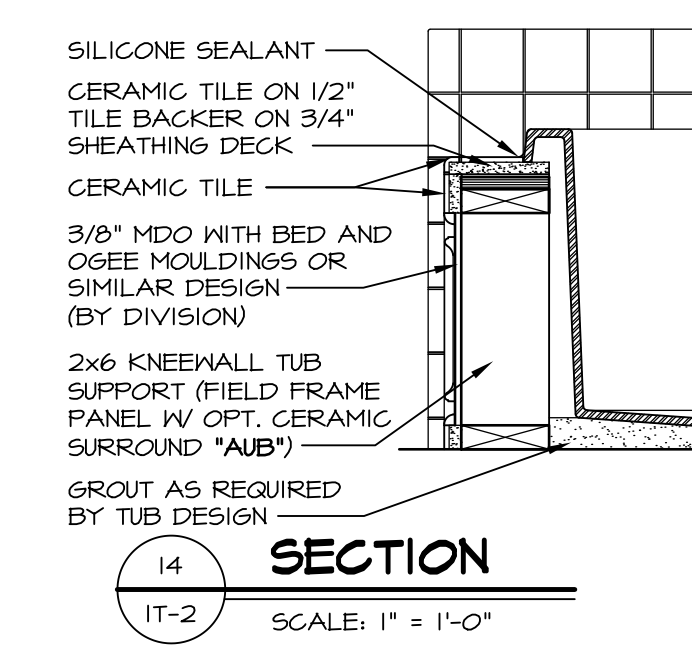
**9 SHOWER SEAT PLAN / DETAIL**  
SCALE: 1/2" = 1'-0"



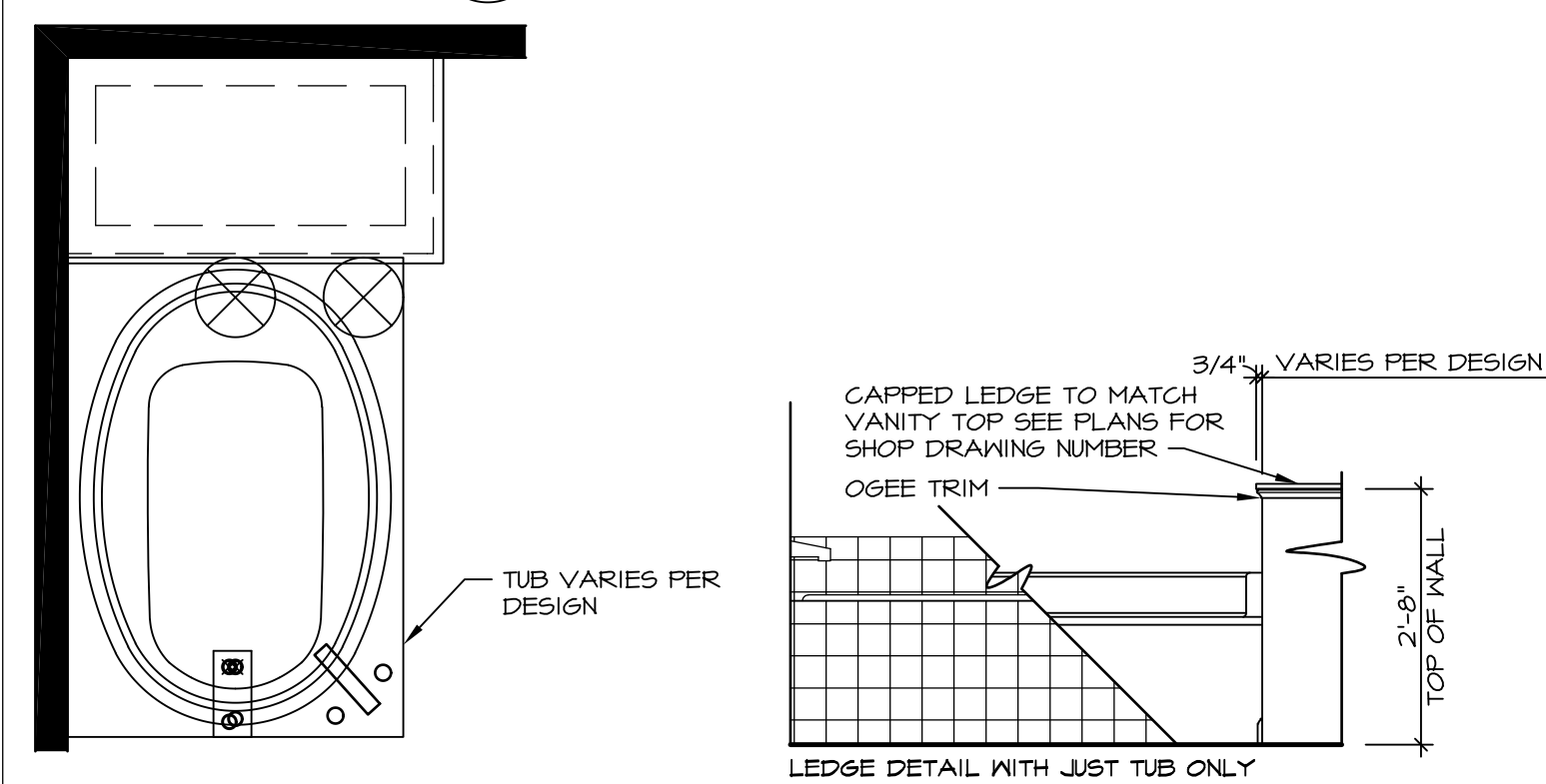
**10 SHOWER SEAT SECTION**  
SCALE: 1-1/2" = 1'-0"



**11 ALTERNATE SHOWER PAN DETAIL**



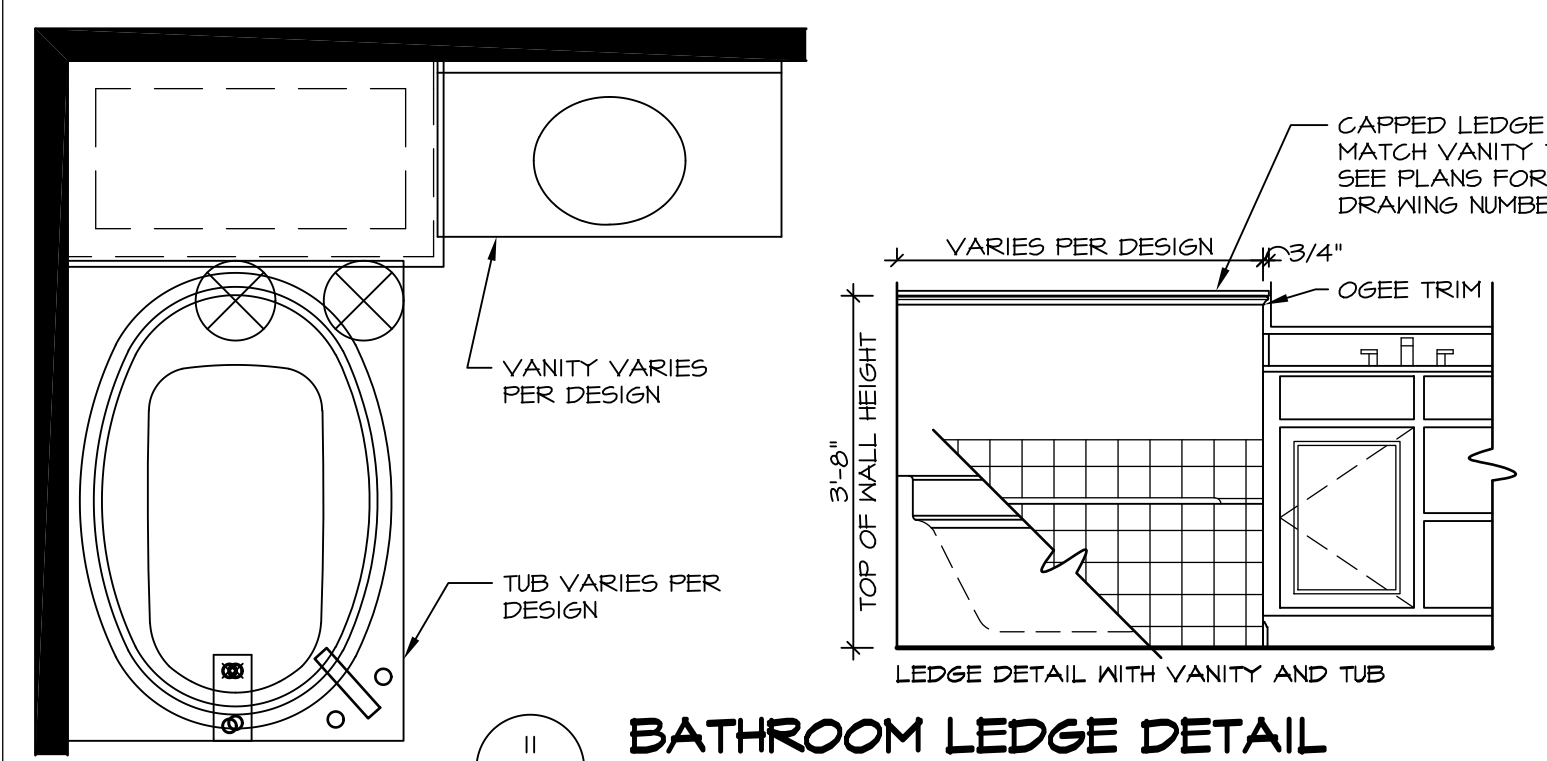
**14 SECTION**  
SCALE: 1" = 1'-0"



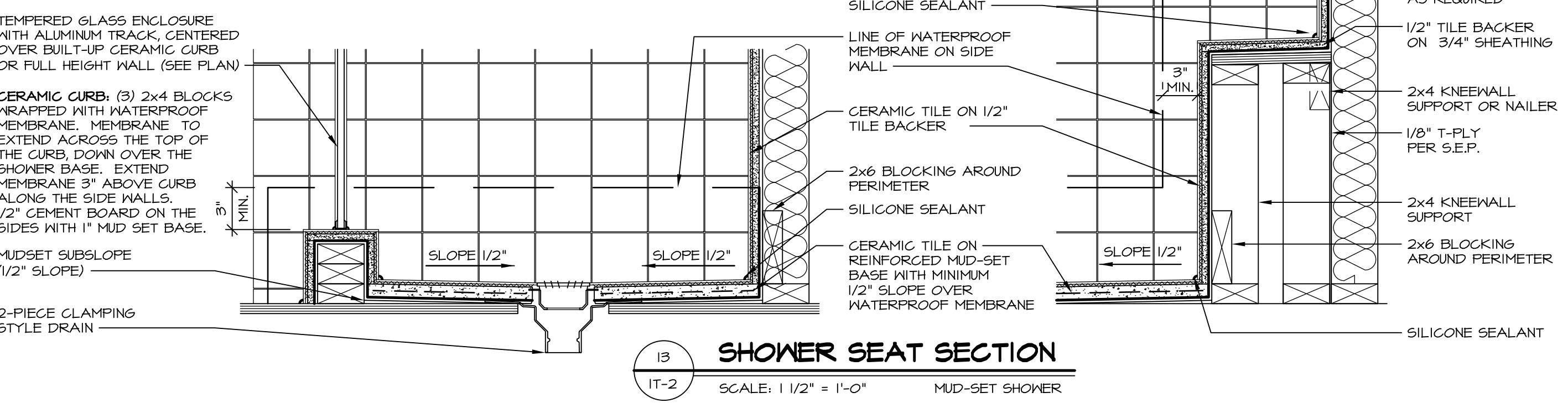
**12 BATHROOM LEDGE DETAIL**  
SCALE: 1" = 1'-0"



**13 SILL DETAIL**  
SCALE: 1" = 1'-0"



**11 BATHROOM LEDGE DETAIL**  
SCALE: 1/2" = 1'-0"



**13 SHOWER SEAT SECTION**  
SCALE: 1 1/2" = 1'-0" MUD-SET SHOWER

REVISIONS

REV. NO.	DATE	DESCRIPTION
5/11/17	5/11/17	EEP - REVISED DETAIL 1 AND 11 TO REMOVE TUB ACCESS PANEL REF. (CBS #15 5414)

NVR, Inc., owner, expressly reserves its common law copyright and other property rights in these plans. These plans are not to be copied, reproduced, or otherwise used in any way without the written consent of NVR, Inc. No part of these plans may be reproduced or transmitted in any form or by any means, electronic or mechanical, including photocopying, recording, or by any information storage and retrieval system, without the prior written permission of NVR, Inc.

**NVR**  
NVR, Inc.  
Architectural Services  
5285 Westpark Drive, Suite 100  
Frederick, MD 21703

SET NO. NVR  
VERSION  
DRAWN BY  
DATE  
OPTION

**STANDARD DETAILS**  
DRAWING TITLE  
INTERIOR TRIM DETAILS  
BATH DETAILS  
OPTION DESCRIPTION

SHEET NO. **IT-2**