

**LEGEND**

	BEARING WALL
	NON BEARING WALL
	INDICATES BEARING FROM POINT-LOAD ABOVE
	JACKS
	BEAM/HEADER
	PAD FOOTING
	STEEL COLUMN
	PORTAL FRAME
	JOIST/TRUSS
	LVL
	ENGINEERING PAGE NUMBER

SEE FC DETAILS FOR FRAMING CONNECTORS

- FLOOR PLAN NOTES**
- ALL HEADERS ARE (2) 2x6 w/ 2x4 WALLS OR (3) 2x6 w/ 2x6 WALLS, UNLESS OTHERWISE NOTED.
  - ALL HEADERS TO HAVE (1) 2x4 OR 2x6 JACK EACH END, UNLESS OTHERWISE NOTED.
  - ALL EXTERIOR WALLS TO BE 4" AND ALL INTERIOR WALLS TO BE 3 1/2", UNLESS OTHERWISE NOTED.
  - HATCHED AREAS INDICATE DROPPED CEILINGS. ALL DROPPED CEILINGS ARE 12" UNLESS OTHERWISE NOTED.
  - SEE "BRACED WALL PANEL DETAIL SHEET" FOR SPECIAL WALL FRAMING LOCATIONS AND HEADER SIZES, IF APPLICABLE.
  - SEE STANDARD DETAIL CATEGORY "IT" SHEET(S) FOR INTERIOR TRIM DETAILS.
  - SEE ARCHITECTURAL DETAIL SHEET "AD" FOR HOUSE SPECIFIC INTERIOR TRIM OPTION TABLE.
  - ALL WINDOWS HAVE 7'-0 1/2" HEADER HEIGHT UNLESS OTHERWISE NOTED.
  - ALL CASED OPENINGS AT T-11, UNLESS OTHERWISE NOTED.

- GYPSUM NOTES**
- AT GARAGE:  
GYPSUM BOARD AT COMMON WALLS, CEILINGS, BEAM WRAPS AND SUPPORTS PER STANDARD DETAIL FA-1(b) FIRE ASSEMBLIES OR AS REQUIRED BY LOCAL CODE.
- AT STAIRS:  
1/2" GYPSUM BOARD AT UNDERSIDE OF STAIRS AND WALLS IN CLOSET

REV. NO.	DATE	REMARKS
1	08/05/16	TH - DRAWING ALIGNMENT

NVR, Inc., owner, expressly reserves its copyright in these plans. These plans are not to be reproduced, changed, copied in any way, or otherwise used without the written consent of NVR, Inc.

**NVR**  
Architectural Services  
5285 Westpark Drive  
Frederick, MD 21703

SHEET NO.	MODEL	SET NO.	VERSION	DRAWN BY	DATE:	OPTION
A-6	PALERMO	03	03			
51	DRAWING TITLE	BASEMENT FLOOR PLAN				
	OPTION DESCRIPTION					

**BASEMENT FLOOR PLAN**  
SCALE: 1/4" = 1'-0"

FIRST FLOOR JACK SCHEDULE				
IDENTIFIER	DESCRIPTION	OPTIONS	ENG. NUM.	REMARKS
J101	JACK - (2) 2X4 SFF STUD GRADE		1072	
J102	JACK - (2) 2X4 SFF STUD GRADE		1072	
J106	JACK - (2) 2X4 SFF STUD GRADE		1012	
J107	JACK - (2) 2X4 SFF STUD GRADE		1012	
J108	JACK - (2) 2X4 SFF STUD GRADE		1012	
J104	JACK - (3) 2X4 SFF STUD GRADE	GCB	1046	
J110	JACK - (3) 2X4 SFF STUD GRADE	GCB	1046	
J120	JACK - (4) 2X6 SFF STUD GRADE	MAA	1014	
J121	JACK - (3) 2X6 SFF STUD GRADE	MAA	1014	FIELD INSTALLED
J122	JACK - (3) 2X4 SFF STUD GRADE	SRM	1040	
J124	JACK - (3) 2X4 SFF STUD GRADE	ELD	1021	
J133	JACK - (2) 2X4 SFF STUD GRADE	GCBMAV	1044, 1131	CRIPPLES
J134	JACK - (2) 2X4 SFF STUD GRADE	GCBMAV	1044, 1131	CRIPPLES
J137	JACK - (3) 2X4 SFF STUD GRADE	EVP, MAV	1124	
J164	JACK - (3) 2X4 SFF STUD GRADE	EVP, MAV	1124	
J161	JACK - (2) 2X4 SFF STUD GRADE	L66	1082	
J168	JACK - (2) 2X4 SFF STUD GRADE	L66	1082	
J164	JACK - (3) 2X4 SFF STUD GRADE	ELD		

**LVL PLY TO PLY FASTENING SCHEDULE:**

1A - (2) FLY UP TO AND INCLUDING 1 7/8" TALL; FASTEN FLIES W/ (2) ROWS 16D NAILS AT 12" O.C.  
 2A - (2) FLY 14" TO AND INCLUDING 18" TALL (INCLUSIVE); FASTEN FLIES W/ (3) ROWS 16D NAILS AT 12" O.C.  
 3A - (2) FLY 20" TALL AND OVER; FASTEN FLIES W/ (4) ROWS 16D NAILS AT 12" O.C.  
 4A - (3) FLY UP TO AND INCLUDING 1 7/8" TALL; FASTEN FLIES W/ (2) ROWS 16D NAILS AT 12" O.C. FROM EACH SIDE  
 5A - (3) FLY 14" TO AND INCLUDING 18" TALL (INCLUSIVE); FASTEN FLIES W/ (3) ROWS 16D NAILS AT 12" O.C. FROM EACH SIDE  
 6A - (3) FLY 20" TALL AND OVER; FASTEN FLIES W/ (4) ROWS 16D NAILS AT 12" O.C. FROM EACH SIDE

FIRST FLOOR BEAM/HEADER SCHEDULE					
IDENTIFIER	DESCRIPTION	LENGTH	OPTIONS	ENG. NUM.	REMARKS
B101-3	LVL - 16	14'-4 1/2"	MAA	1014	5A, FIELD INSTALL
B103	BEAM STEEL - W12X35	22'-3 1/2"	ELD, MAV	1128	
B104	BEAM STEEL - W12X14	22'-3 1/2"	ELD, EVP, MAV	1124	
B107-2	LVL - 14	17'-4"	MAV	1050, 1051	2A, FIELD INSTALL

STEEL COLUMN SCHEDULE					
IDENTIFIER	STYLE	HEIGHT	OPTIONS	ENG. NUM.	REMARKS
C101	STANCHION - 3 IN SCHED 40	9'-0 11/16"	FBA	1057, 1133, 1128	
C102	STANCHION - 3 IN SCHED 40	9'-0 11/16"	FBA	1057, 1133, 1128	

LEGEND	
	BEARING WALL
	NON BEARING WALL
	INDICATES BEARING FROM POINT-LOAD ABOVE
	JACKS
	BEAM/HEADER
	PAD FOOTING
	STEEL COLUMN
	PORTAL FRAME
	JOIST/TRUSS
	LVL
	ENGINEERING PAGE NUMBER

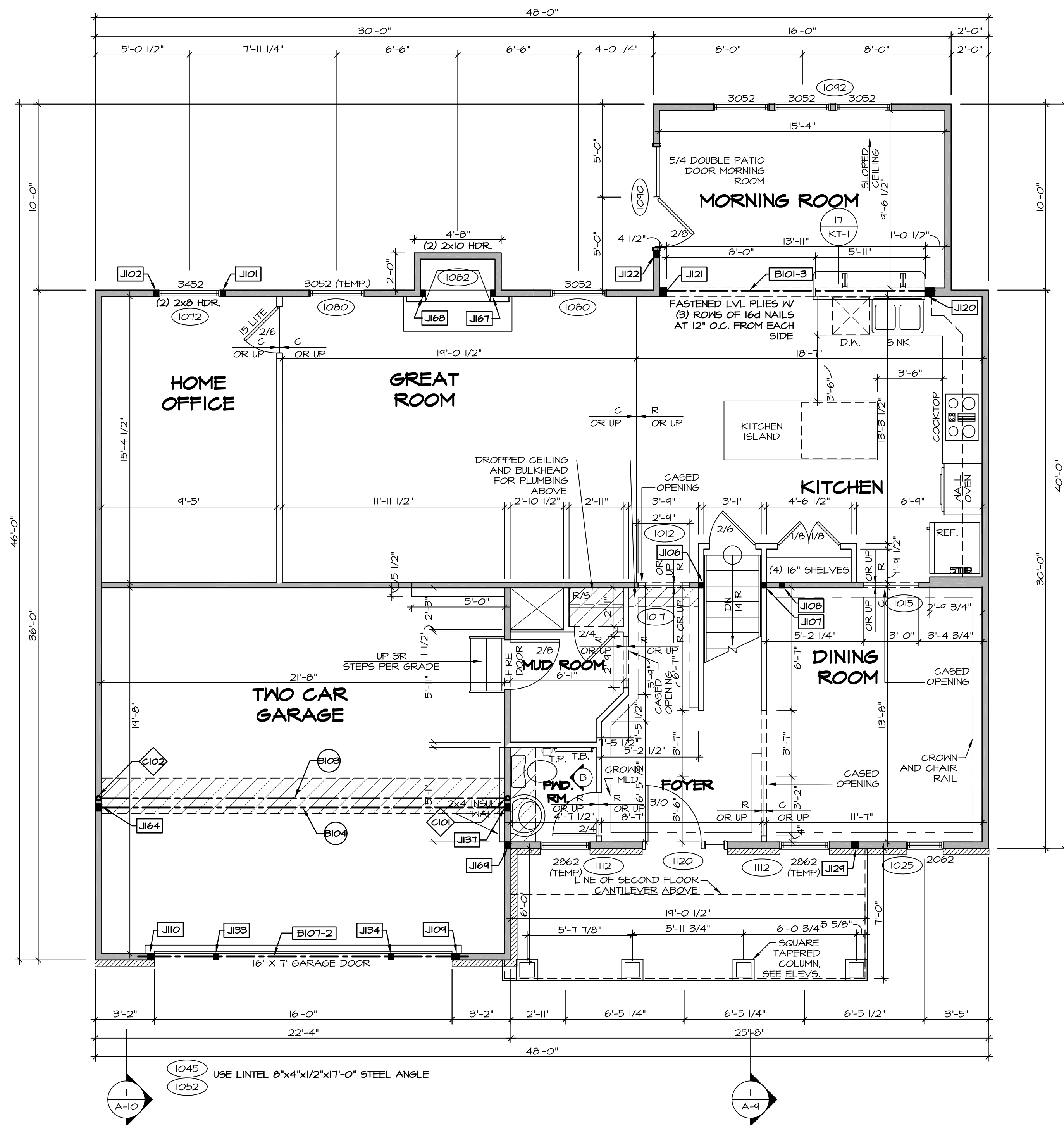
**FLOOR PLAN NOTES**

- ALL HEADERS ARE (2) 2x6 W/ 2x4 WALLS OR (3) 2x6 W/ 2x6 WALLS, UNLESS OTHERWISE NOTED.
- ALL HEADERS TO HAVE (1) 2x4 OR 2x6 JACK AND KING STUD EACH END, UNLESS OTHERWISE NOTED.
- ALL EXTERIOR WALLS TO BE 4" W/ OSB OR 3 1/2" W/ T-PLY, ALL INTERIOR WALLS TO BE 3 1/2", UNLESS OTHERWISE NOTED.
- HATCHED AREAS INDICATE DROPPED CEILINGS. ALL DROPPED CEILINGS ARE 12" UNLESS OTHERWISE NOTED.
- SEE 'BRACED WALL PANEL DETAIL SHEET' FOR SPECIAL WALL FRAMING LOCATIONS AND HEADER SIZES, IF APPLICABLE.
- SEE STANDARD DETAIL CATEGORY 'IT' SHEET(S) FOR INTERIOR TRIM DETAILS.
- SEE ARCHITECTURAL DETAIL SHEET 'AD' FOR HOUSE SPECIFIC INTERIOR TRIM OPTION TABLE.
- ALL WINDOWS HAVE 7'-0 1/2" HEADER HEIGHT UNLESS OTHERWISE NOTED.
- ALL HEADERS IN NON-BEARING WALLS SHALL BE A SINGLE FLAT 2X4 OR 2X6 ATTACHED TO CRIPPLES ABOVE, UNLESS OTHERWISE NOTED.

**GYPSUM NOTES**

**AT GARAGE:**  
 GYPSUM BOARD AT COMMON WALLS, CEILING, BEAM WRAPS AND SUPPORTS PER STANDARD DETAIL FA-1(b) FIRE ASSEMBLIES OR AS REQUIRED BY LOCAL CODE.

**AT STAIRS:**  
 1/2" GYPSUM BOARD AT UNDERSIDE OF STAIRS AND WALLS IN CLOSET



**FIRST FLOOR PLAN**  
 SCALE: 1/4" = 1'-0"

REV. NO.	DATE	DESCRIPTION	REMARKS
1	08/04/16	TM - DRAWING ALIGNMENT	
2	07/27/17	SLS - T-PLY CONVERSION PROJECT	

NVR, Inc., owner, expressly reserves its copyright in these plans. These plans are not to be reproduced, changed, copied, or otherwise used in any way without the written consent of NVR, Inc.

**NVR**  
 NVR, Inc.  
 Architectural Services  
 5285 Washburne Lane, Suite 100  
 Frederick, MD 21703

SET NO. PALOO  
 VERSION 03  
 DRAWN BY  
 DATE:  
 OPTION

**PALERMO**  
 DRAWING TITLE  
 FIRST FLOOR PLAN

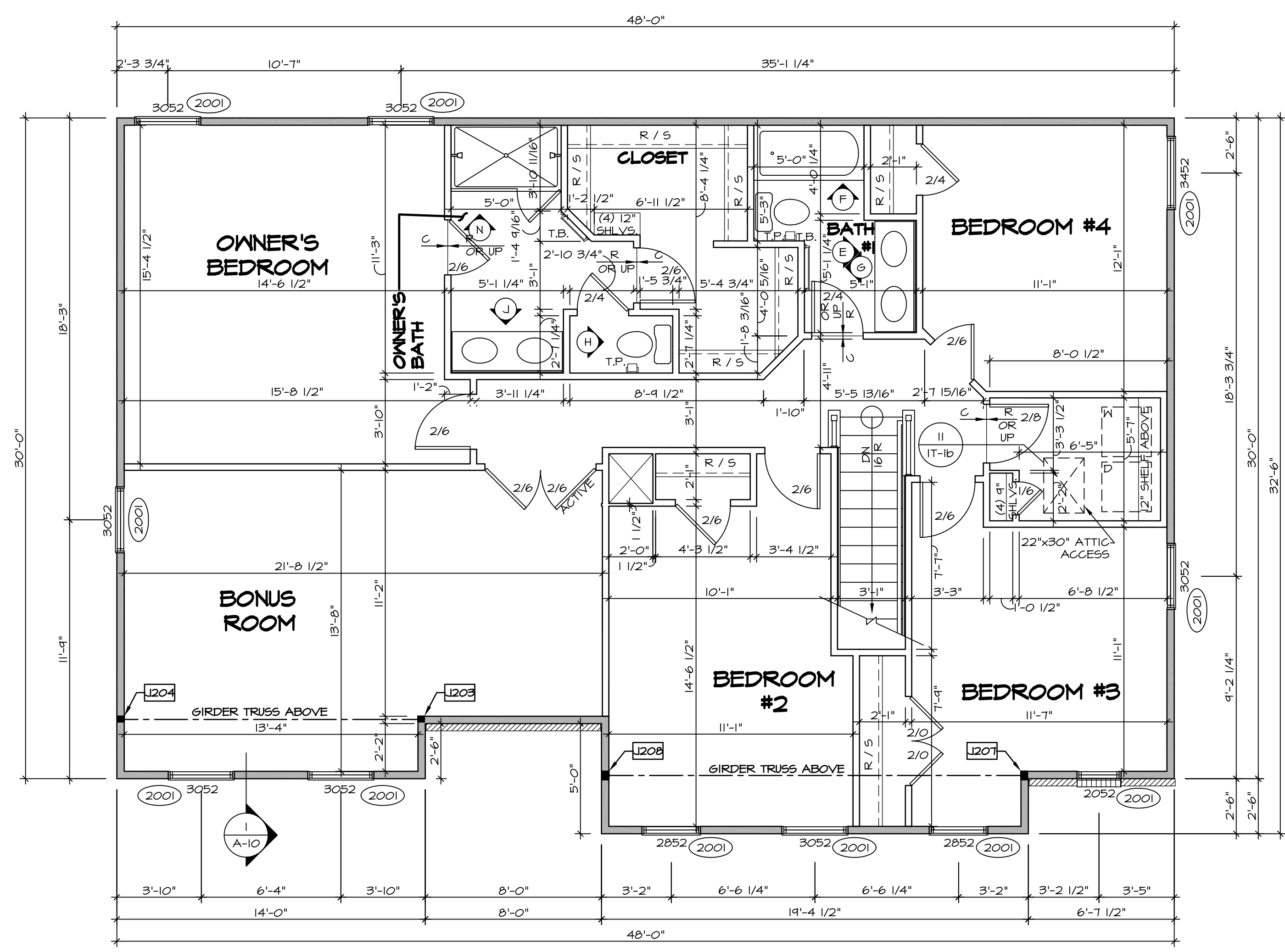
SHEET NO. **A-7**  
 OPTION DESCRIPTION  
**53**

C:\NVR\Solves\PALERMO\_PALOO\_03\DCI-ELW-S091\997871\Sheets\Lot\_Spec\A-3 A-7 PLAN\_L5.dwg 12/08/17 - 12:51 PM

SECOND FLOOR JACK SCHEDULE				
IDENTIFIER	DESCRIPTION	OPTIONS	ENG. NUM.	REMARKS
J203	JACK - (2) 2X4 SPM	MAY	2011	EXTEND JACKS THROUGH TOP PLATE
J204	JACK - (2) 2X4 SPM	MAY	2011	EXTEND JACKS THROUGH TOP PLATE
J207	JACK - (3) 2X4 SPM	ELD	2011	EXTEND JACKS THROUGH TOP PLATE
J208	JACK - (3) 2X4 SPM	ELD	2011	EXTEND JACKS THROUGH TOP PLATE

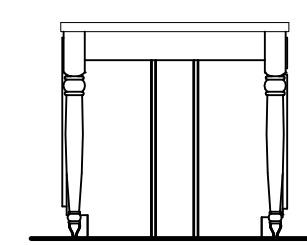
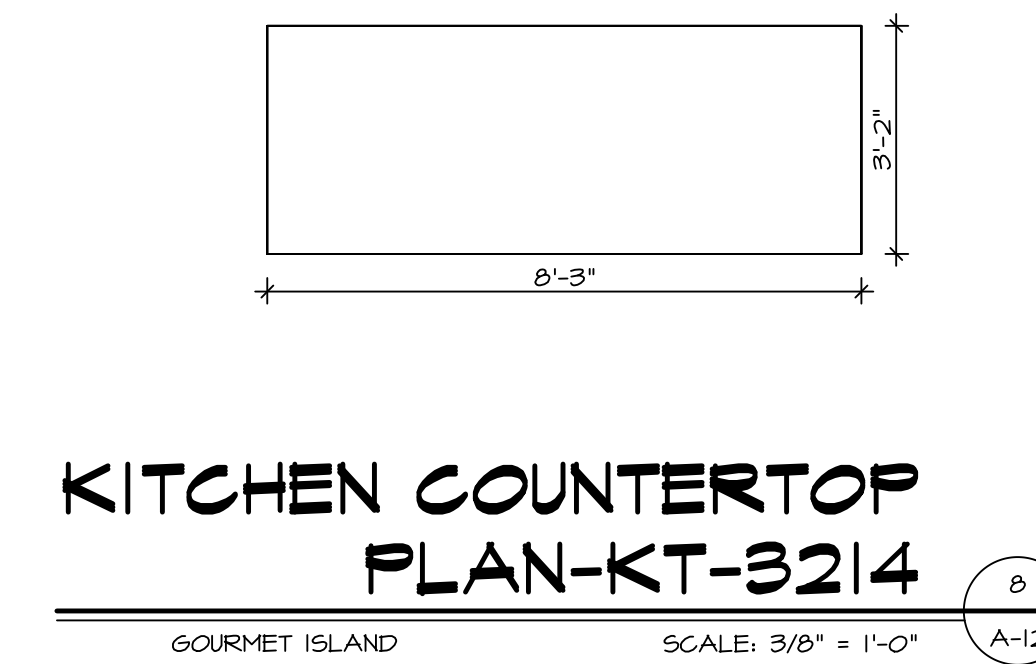
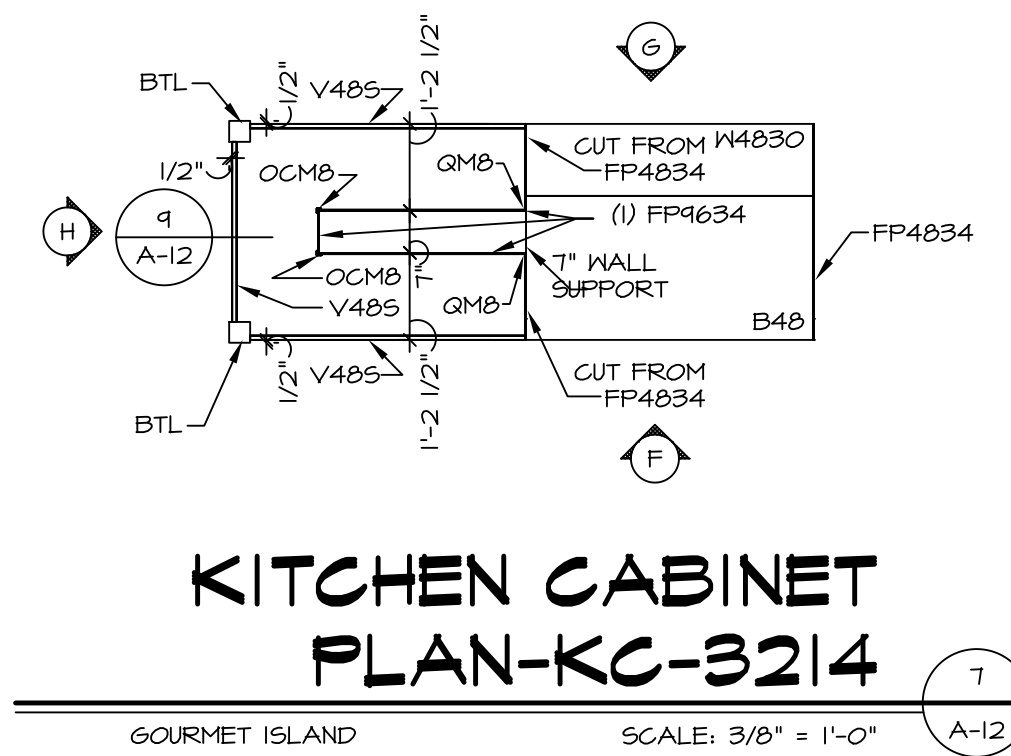
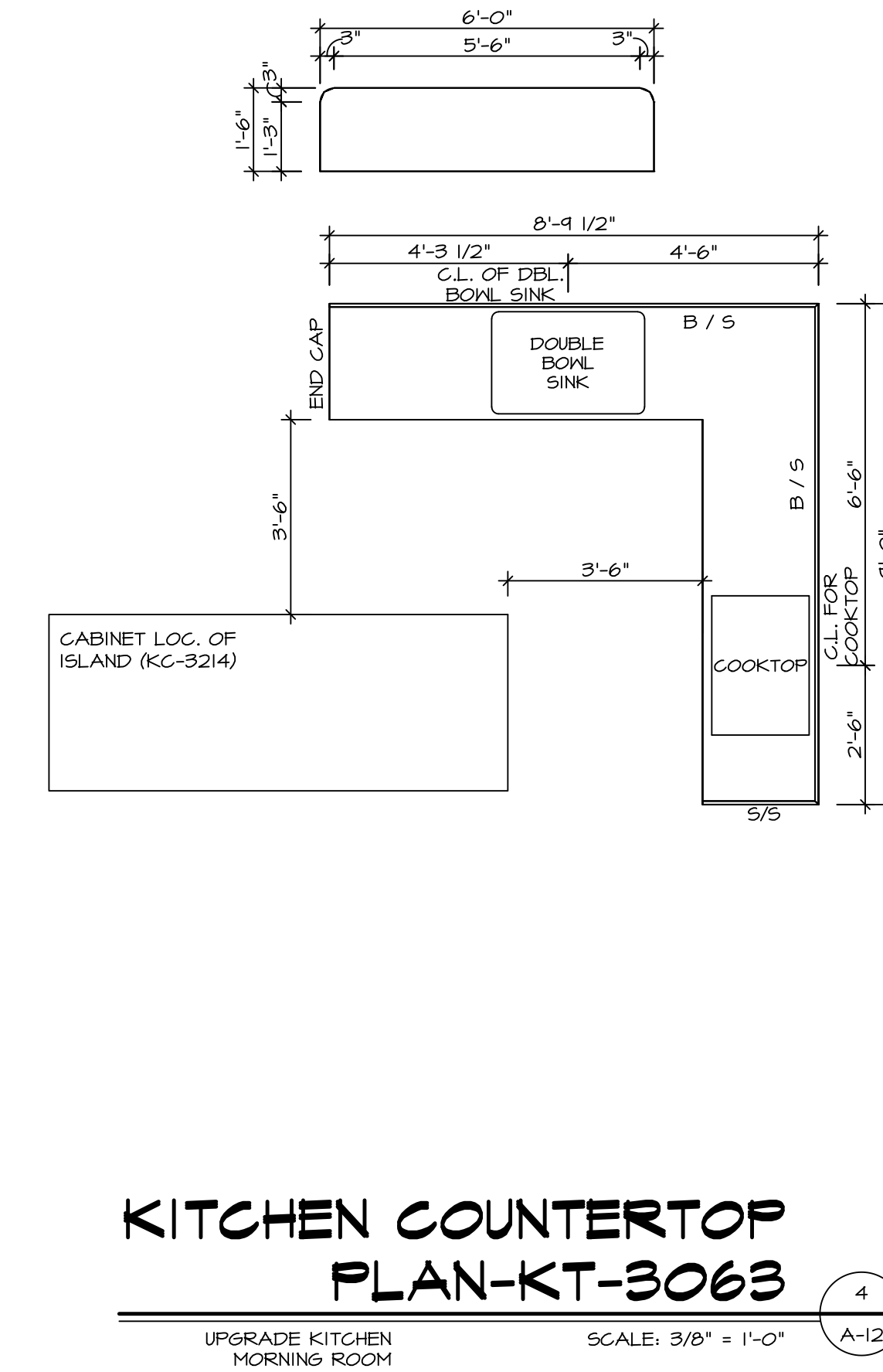
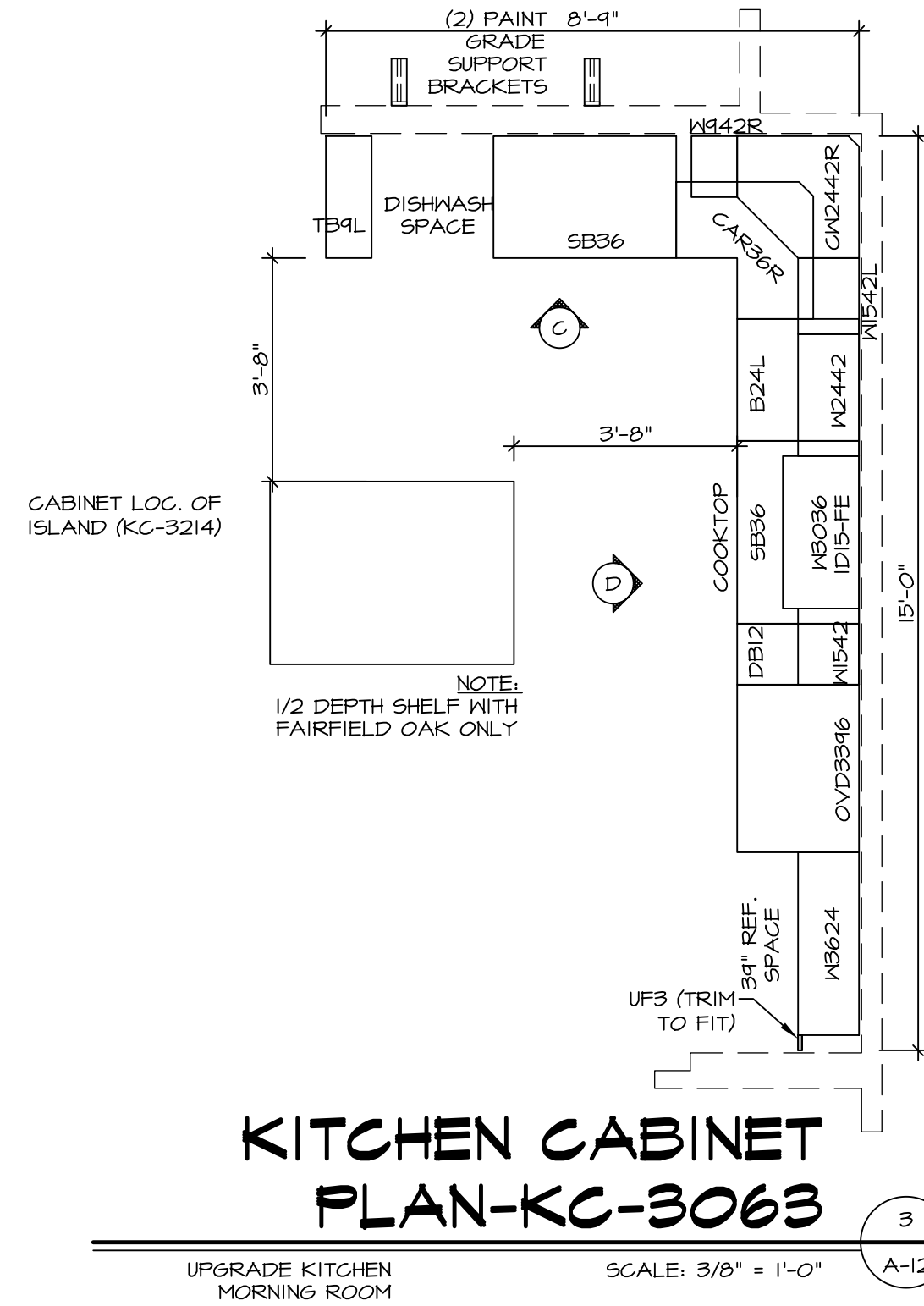
LEGEND	
	BEARING WALL
	NON BEARING WALL
	INDICATES BEARING FROM POINT-LOAD ABOVE
	JACKS
	BEAM/HEADER
	PAD FOOTING
	STEEL COLUMN
	PORTAL FRAME
	JOIST/TRUSS
	LVL
	ENGINEERING PAGE NUMBER

- FLOOR PLAN NOTES**
- ALL HEADERS ARE (2) 2x6 w/ 2x4 WALLS OR (3) 2x6 w/ 2x6 WALLS, UNLESS OTHERWISE NOTED.
  - ALL HEADERS TO HAVE (1) 2x4 OR 2x6 JACK AND KING STUD EACH END, UNLESS OTHERWISE NOTED.
  - ALL EXTERIOR WALLS TO BE 4" w/ OSB OR 3 1/2" w/ T-PLY, ALL INTERIOR WALLS TO BE 3 1/2", UNLESS OTHERWISE NOTED.
  - HATCHED AREAS INDICATE DROPPED CEILINGS. ALL DROPPED CEILINGS ARE 12" UNLESS OTHERWISE NOTED.
  - SEE "BRACED WALL PANEL DETAIL SHEET" FOR SPECIAL WALL FRAMING LOCATIONS AND HEADER SIZES, IF APPLICABLE.
  - SEE STANDARD DETAIL CATEGORY "IT" SHEET(S) FOR INTERIOR TRIM DETAILS.
  - SEE ARCHITECTURAL DETAIL SHEET "AD" FOR HOUSE SPECIFIC INTERIOR TRIM OPTION TABLE.
  - ALL WINDOWS HAVE 7'-0 1/2" HEADER HEIGHT UNLESS OTHERWISE NOTED.
  - ALL HEADERS IN NON-BEARING WALLS SHALL BE A SINGLE FLAT 2x4 OR 2x6 ATTACHED TO CRIPPLES ABOVE, UNLESS OTHERWISE NOTED.

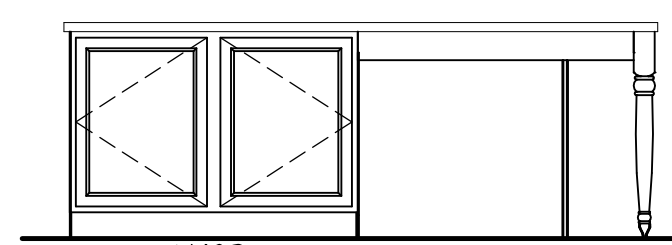


**SECOND FLOOR PLAN**  
SCALE: 1/4" = 1'-0"

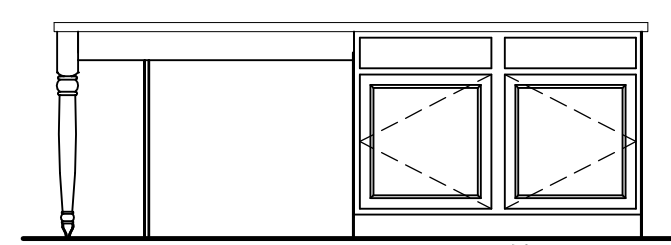
SHEET NO. <b>A-8</b>	MODEL <b>PALERMO</b>	SET NO. <b>PALOO</b>	REVISIONS	REMARKS
		VERSION <b>03</b>	1 08/04/16 TH - DRAWING ALIGNMENT	
OPTION DESCRIPTION	DRAWN BY	DATE:	2 07/27/17 SLS - T-PLY CONVERSION PROJECT	
		OPTION		
<b>PALERMO</b> ARCHITECTS 5285 West Annapolis Frederick, MD 21703		NVR, Inc., owner, expressly reserves its copyright in these plans. These plans are not to be reproduced, changed, copied, or otherwise used in any way without the written consent of NVR, Inc.		



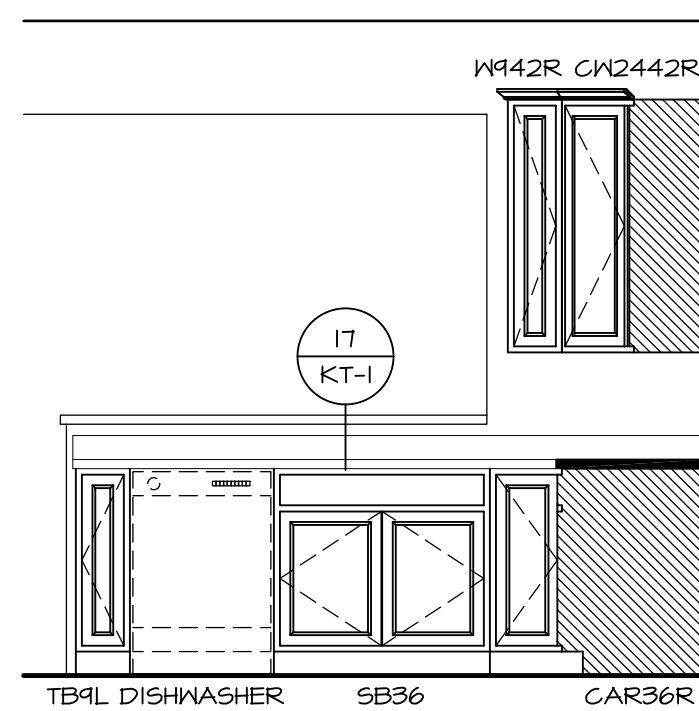
**KITCHEN ELEVATION H**  
 SCALE: 3/8" = 1'-0"



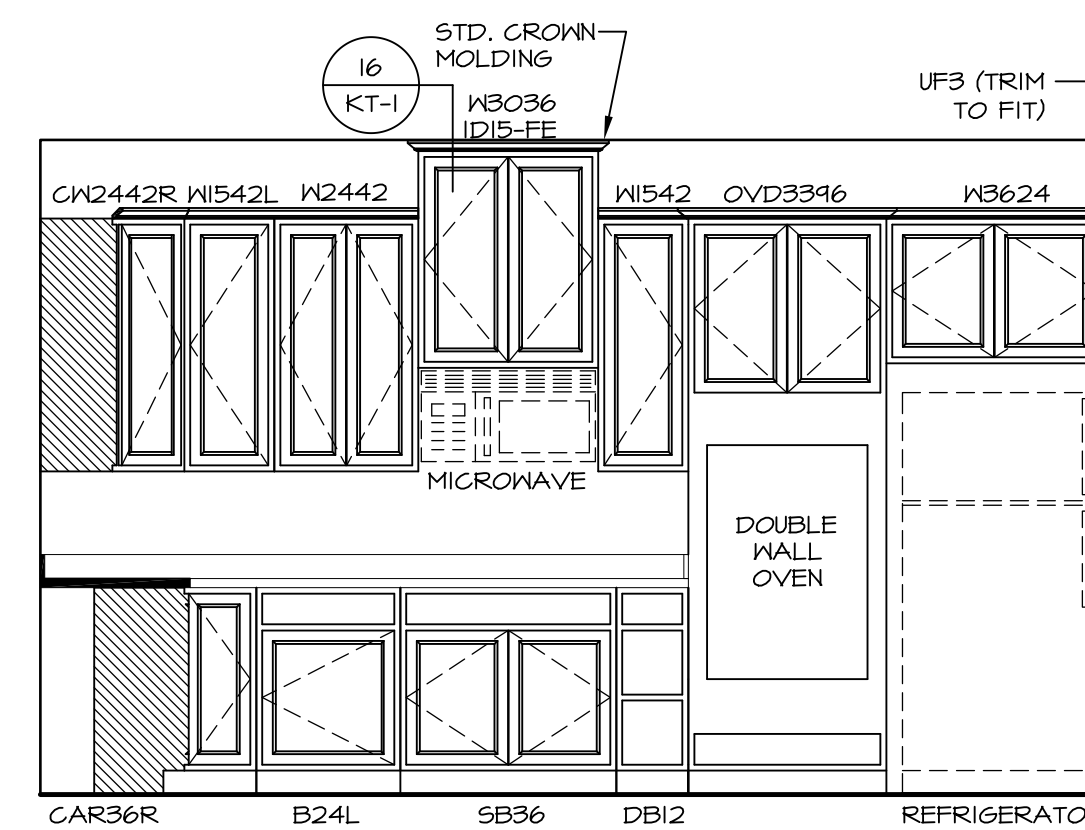
**KITCHEN ELEVATION G**  
 SCALE: 3/8" = 1'-0"



**KITCHEN ELEVATION F**  
 SCALE: 3/8" = 1'-0"



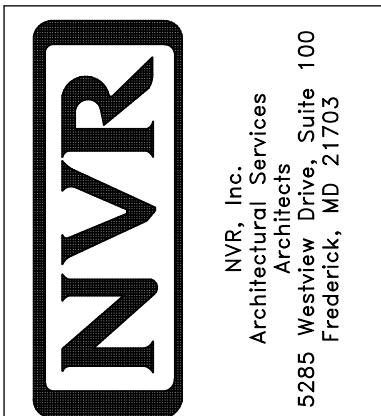
**KITCHEN ELEVATION C**  
 SCALE: 3/8" = 1'-0"



**KITCHEN ELEVATION D**  
 SCALE: 3/8" = 1'-0"

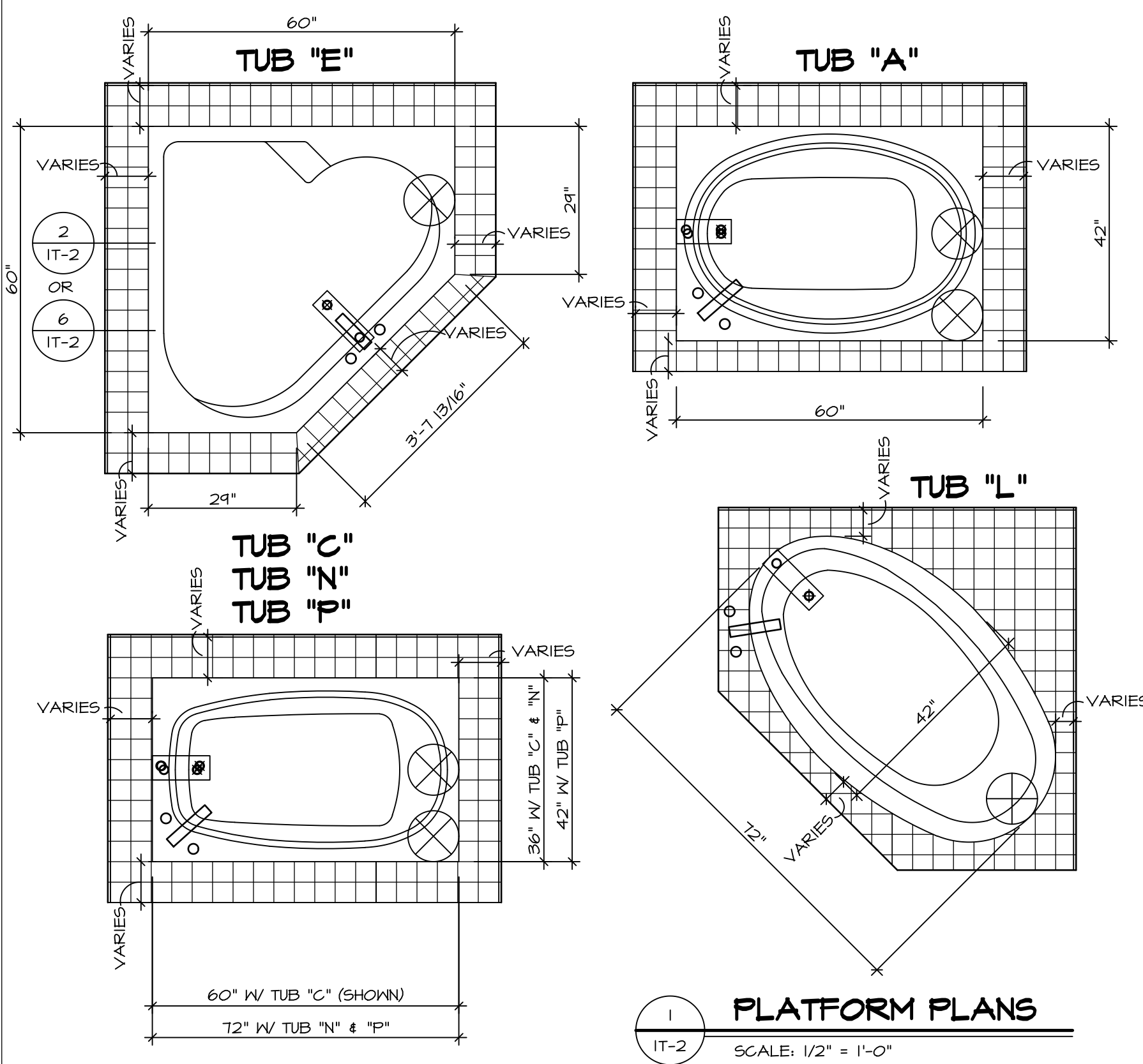
SHEET NO. <b>A-12</b>	MODEL <b>PALERMO</b>	SET NO. <b>PALOO</b>	REMARKS
	DRAWING TITLE	VERSION <b>03</b>	
<b>70</b>	OPTION DESCRIPTION	DRAWN BY	REV. NO. DATE
		DATE:	
		OPTION	

NVR, Inc., owner, expressly reserves its common law copyright in these plans. These plans are not to be reproduced, changed, copied in any way, or used for any purpose not intended by NVR, Inc. without the written consent of NVR, Inc.



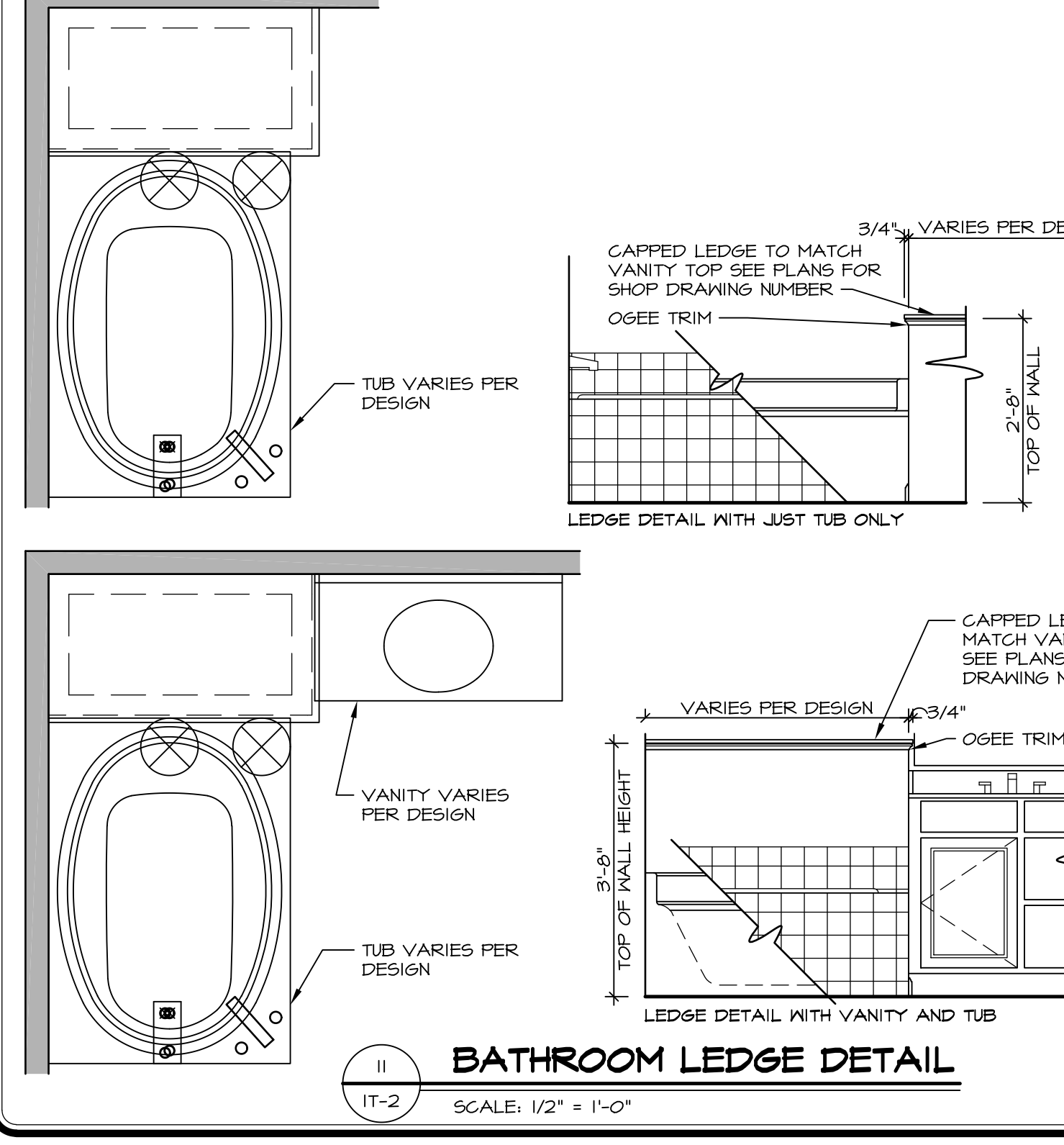
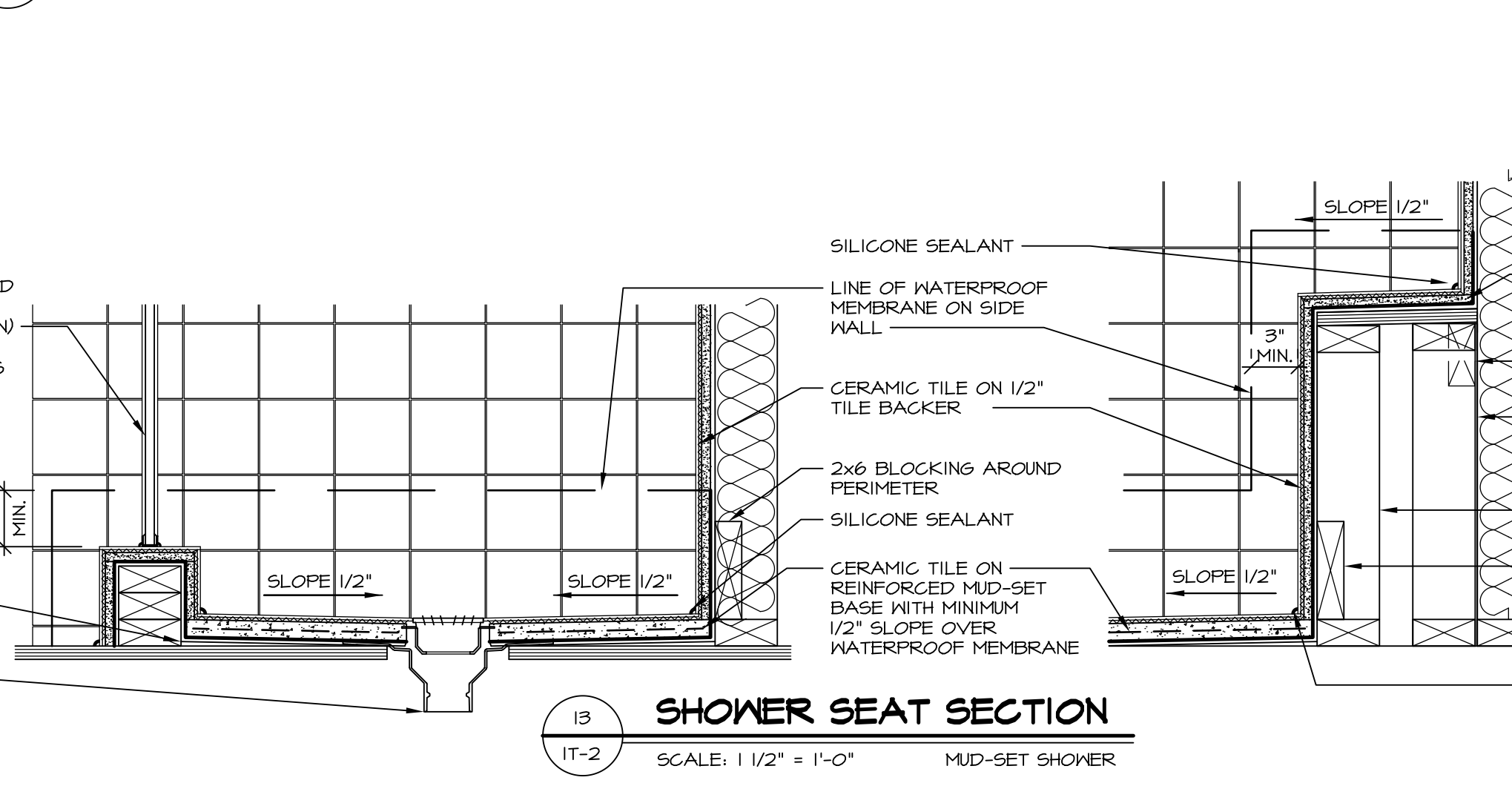
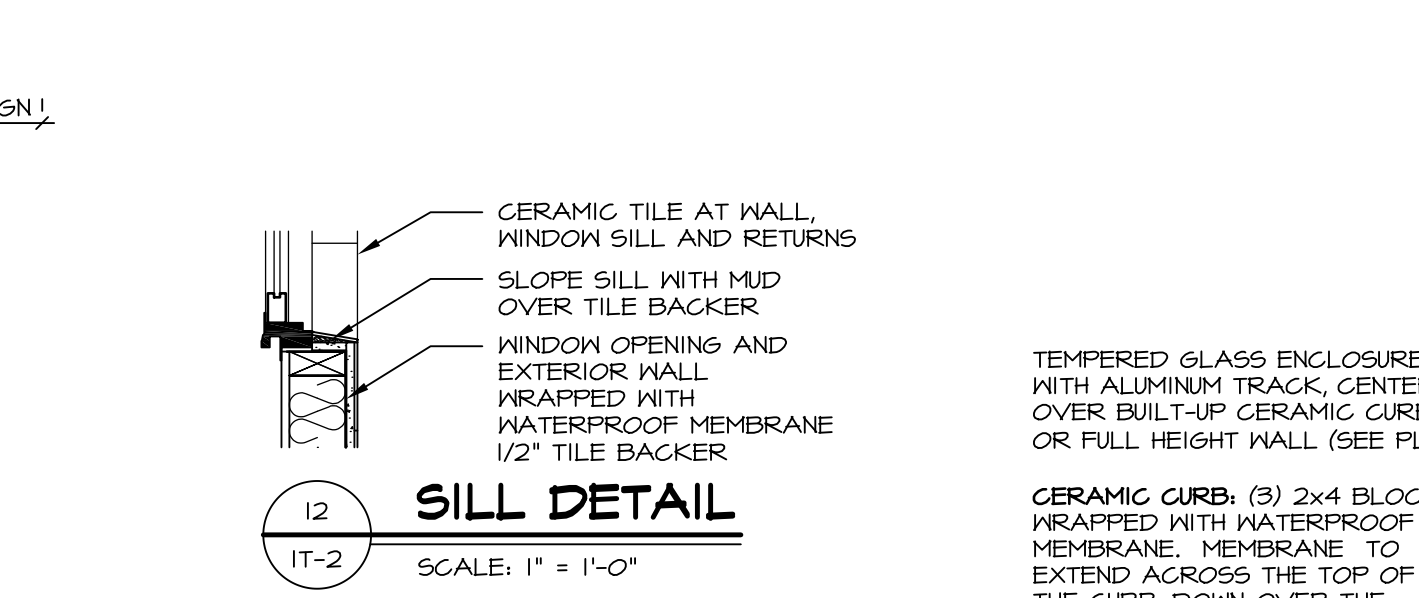
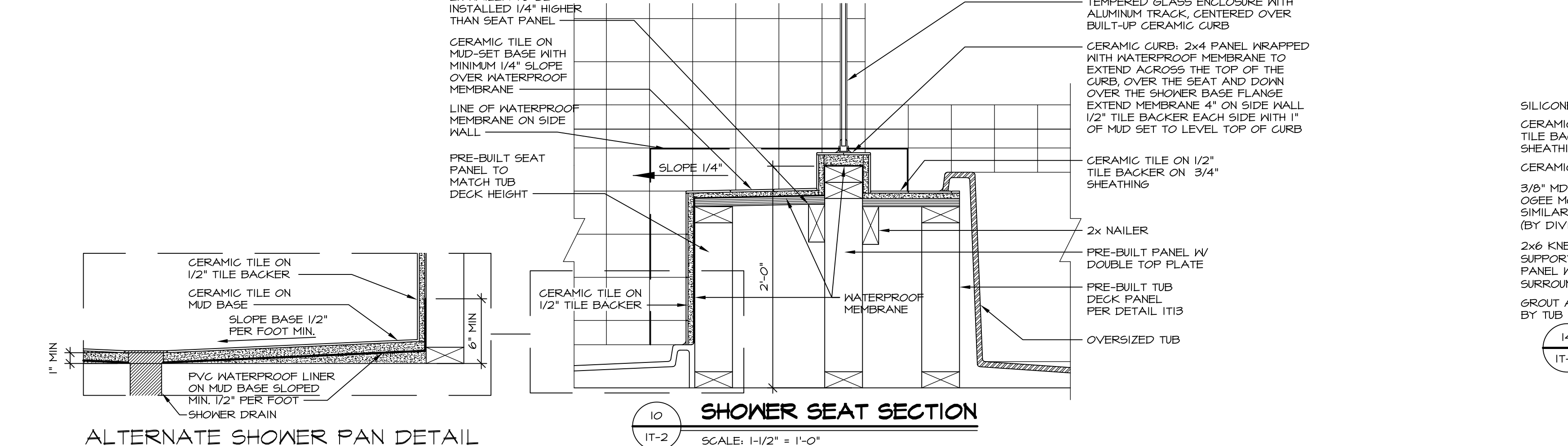
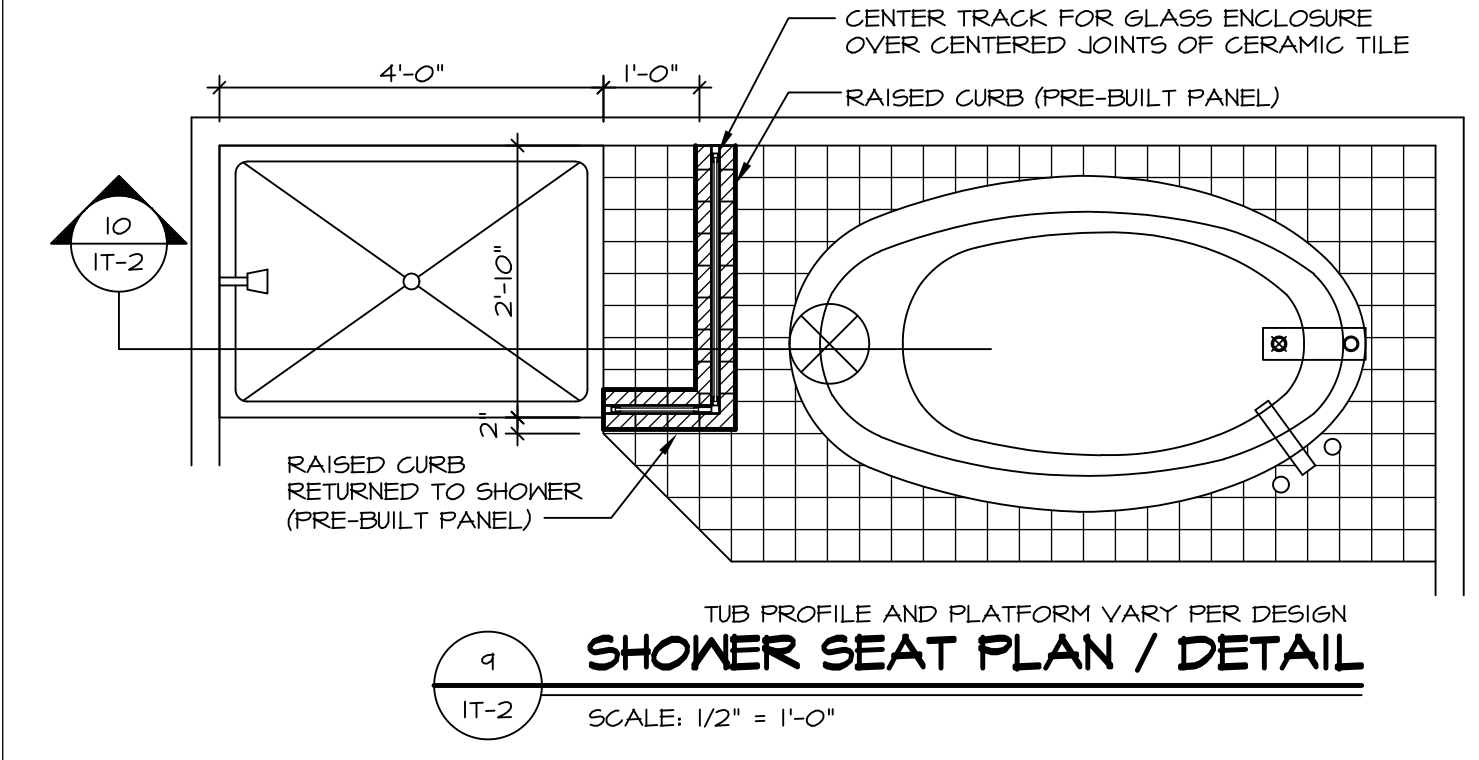
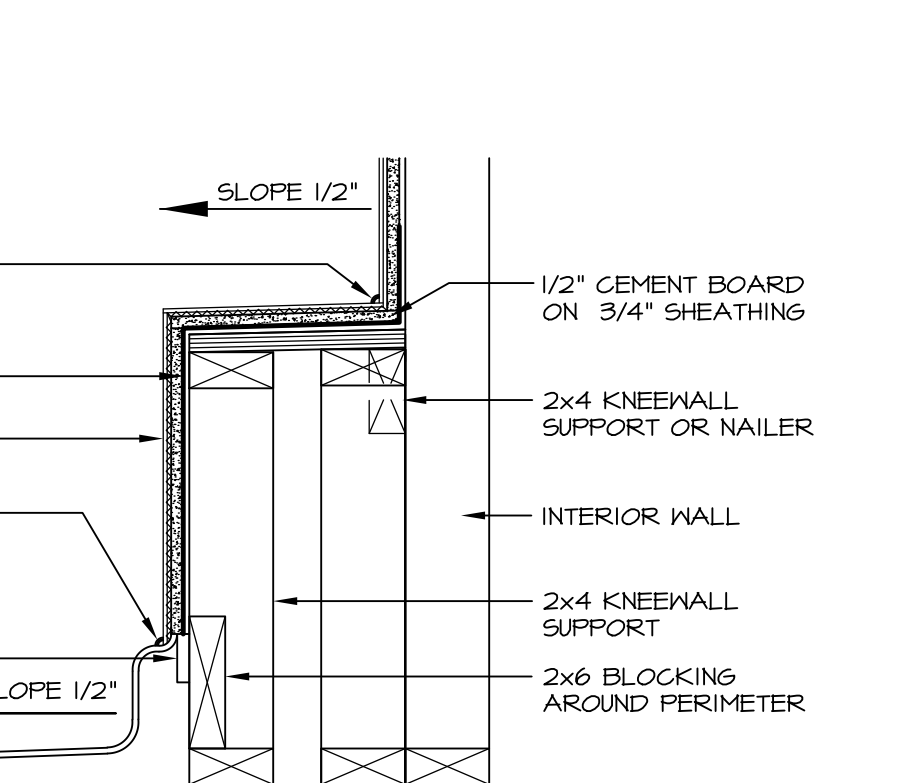
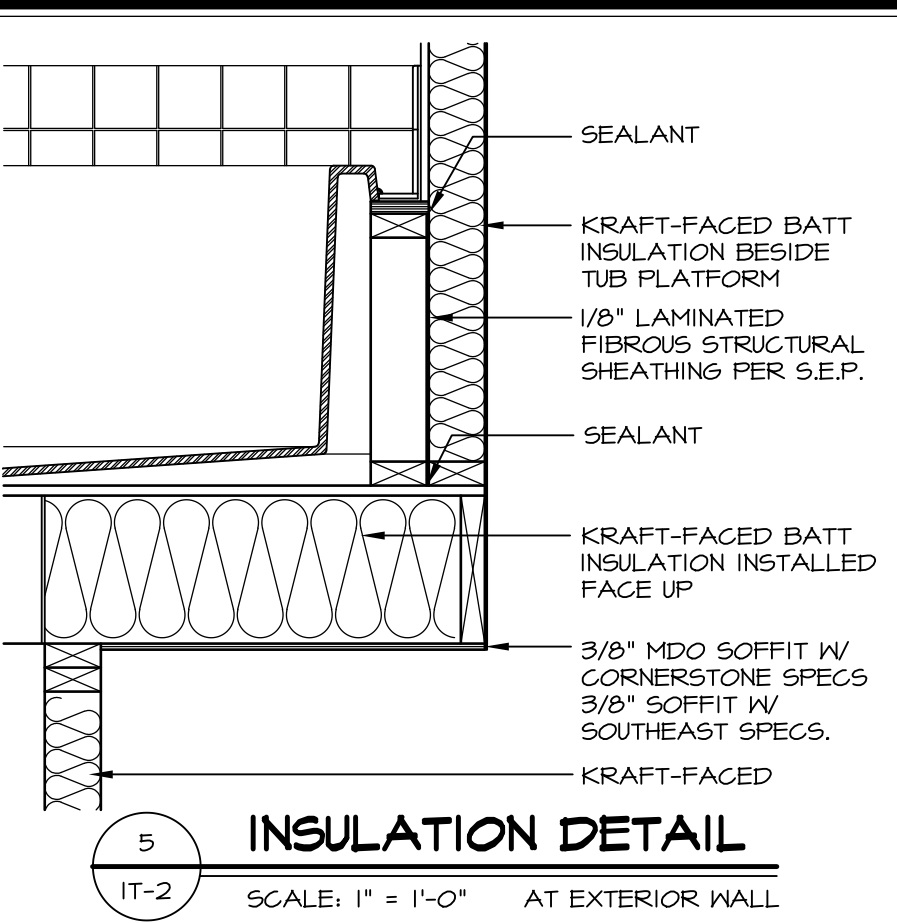
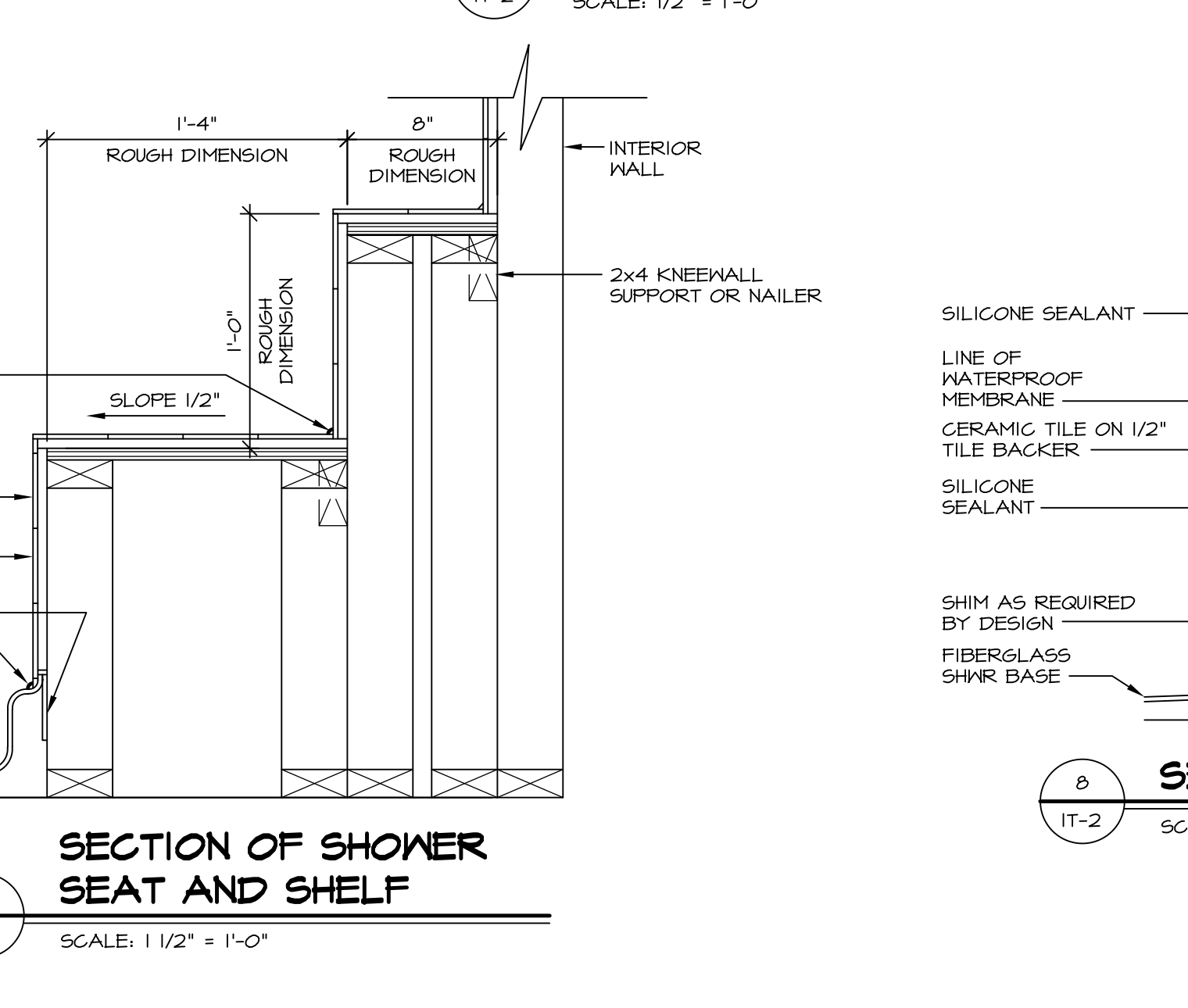
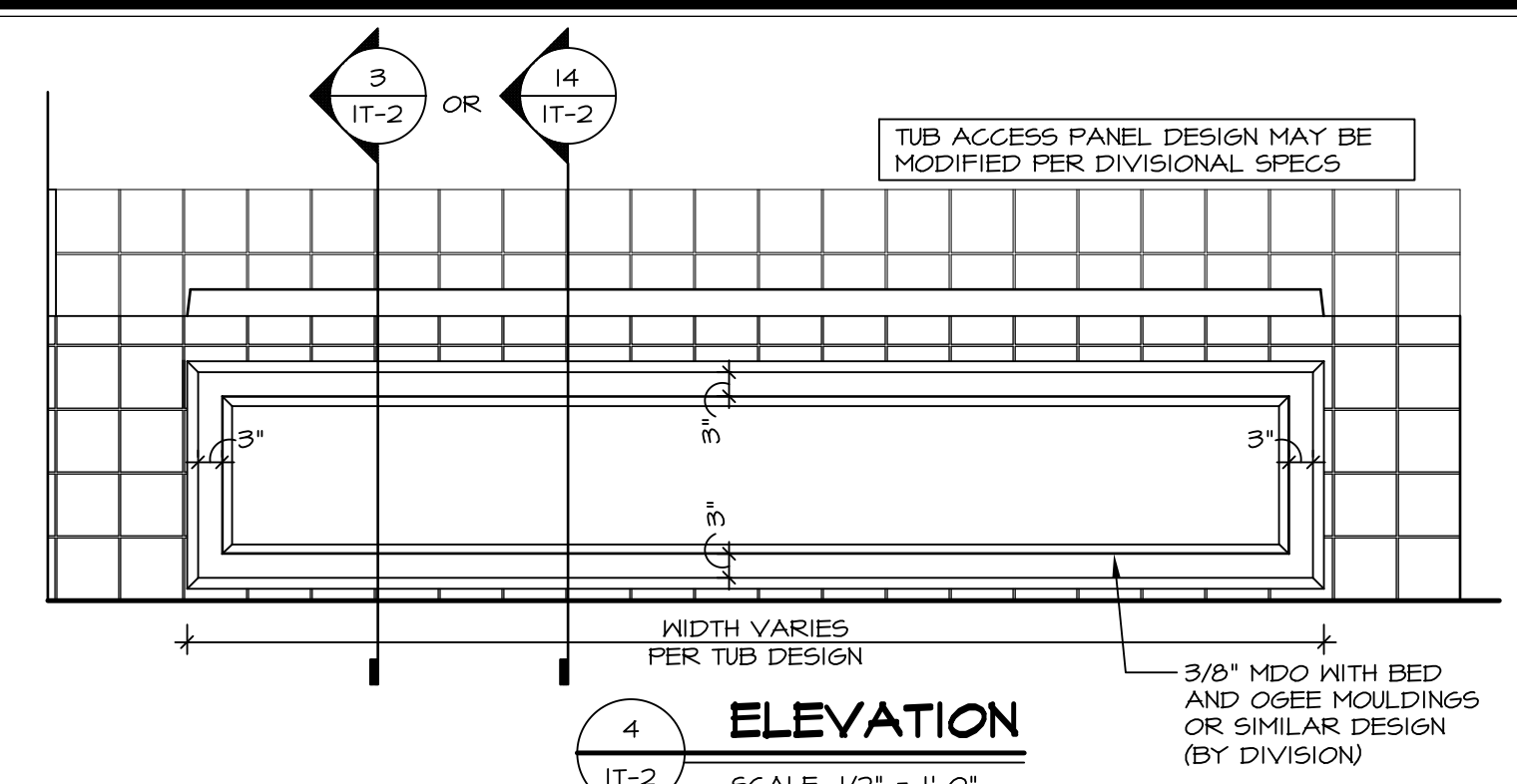
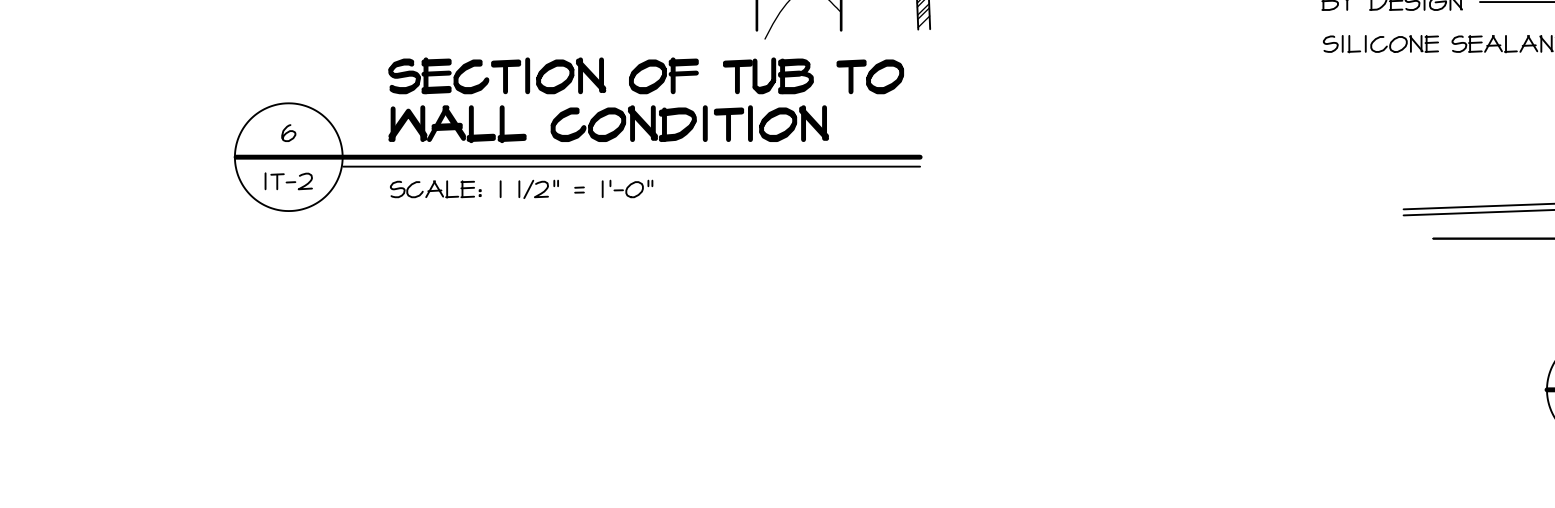
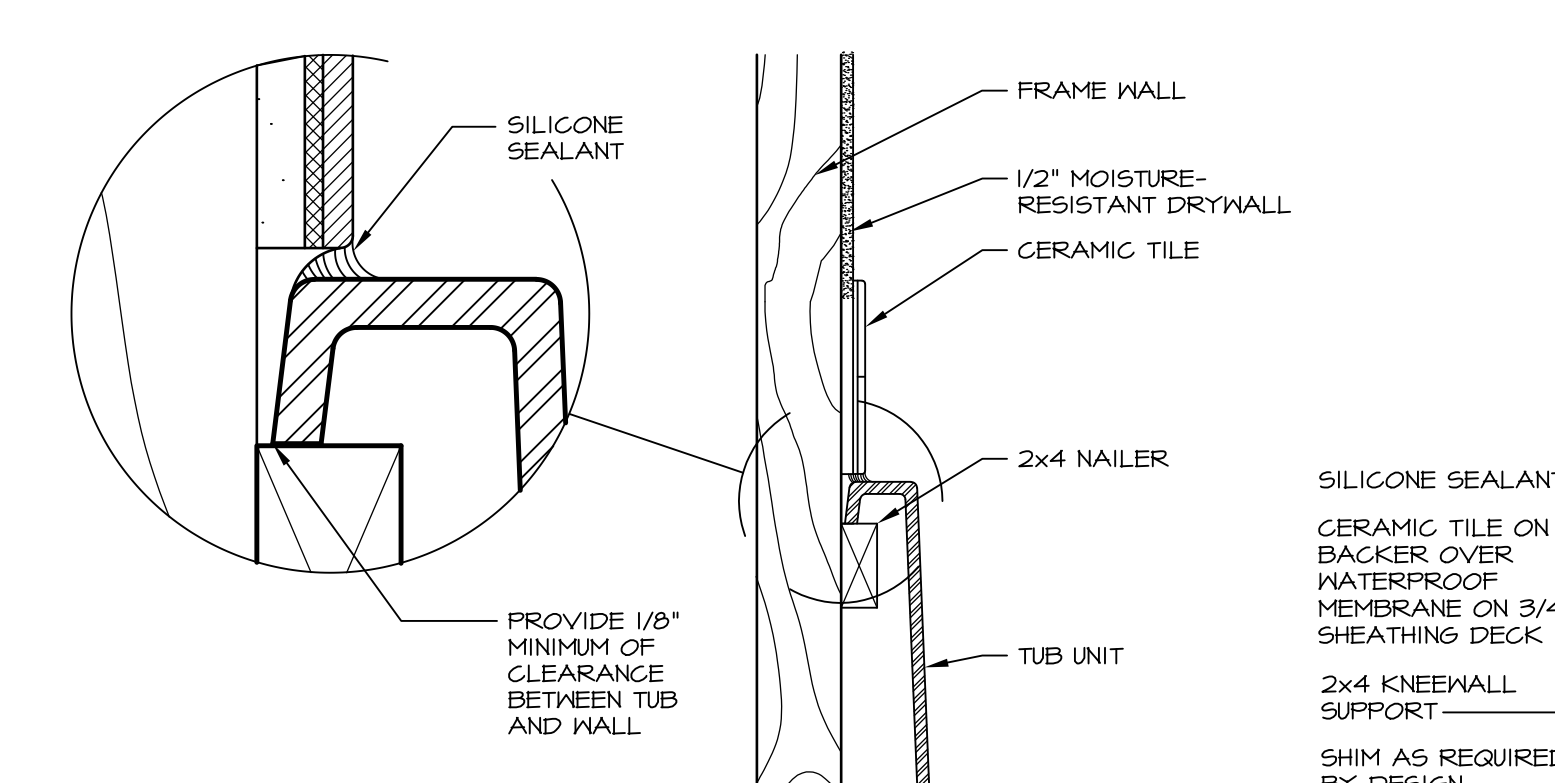
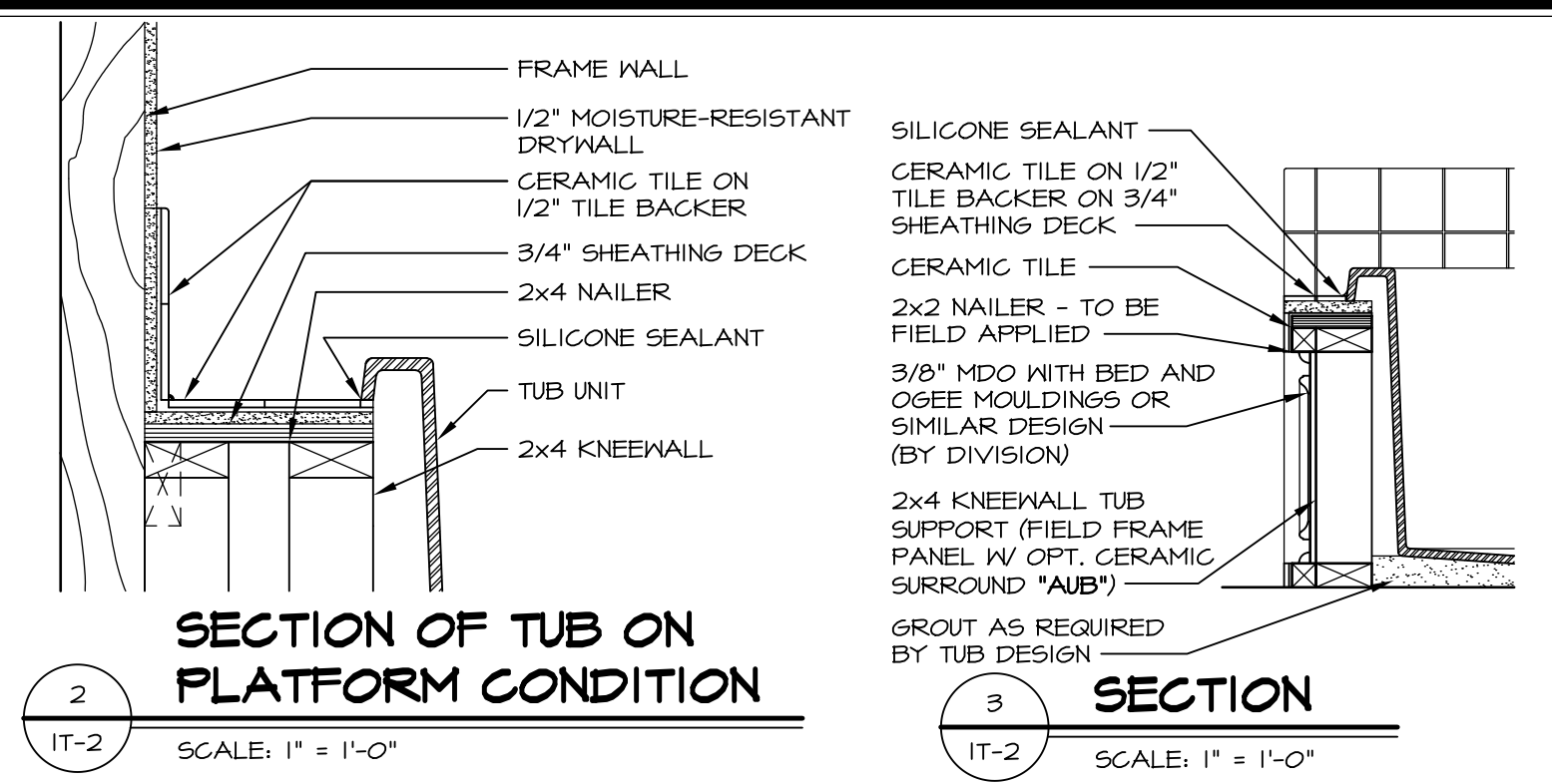






**1 PLATFORM PLANS**  
SCALE: 1/2" = 1'-0"

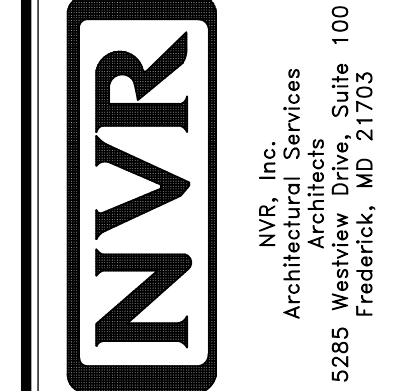
TUB	MANUF.	HEIGHT	WIDTH	LENGTH	TUB DECK PANEL HEIGHT
"A"	KOHLER/ STERLING	18 3/4"	42"	60"	17 1/8"
"C"	KOHLER/ STERLING	18 3/4"	36"	60"	17 1/8"
"E"	KOHLER/ STERLING	19 1/2"	60"	60"	17 7/8"
"L"	KOHLER/ STERLING	18 1/2"	42"	72"	16 7/8"
"N"	KOHLER/ STERLING	18 3/4"	36"	72"	17 1/8"
"P"	KOHLER/ STERLING	18 3/4"	42"	72"	17 1/8"



REMARKS

REV. NO.	DATE	DESCRIPTION
1	5/1/17	EBP - REVISED DETAIL 1 AND 11 TO REMOVE TUB ACCESS PANEL REF. (095 #15 5414)
2	9/2/17	EBP - REVISED T-FLY NOTE TO CALL OUT LFS
3	9/2/17	EBP - REVISED NOTE ON DETAIL #1 - REVISED ORDER OF MATERIAL PARA#6934

NVR, Inc., owner, expressly reserves its common law copyright and other property rights in these plans. These plans are not to be reproduced, stored in a retrieval system, or transmitted in any form or by any means, electronic, mechanical, photocopying, recording, or by any information storage and retrieval system, without first obtaining the expressed written consent of NVR, Inc.



SET NO.	VERSION	DRAWN BY	DATE:	OPTION
1	1			

MODEL: STANDARD DETAILS  
DRAWING TITLE: INTERIOR TRIM DETAILS  
BATH DETAILS  
OPTION DESCRIPTION

SHEET NO. IT-2

J:\Dwg\NVR\Interior Trim\IT2.dwg 09/27/17 - 9:20 am