

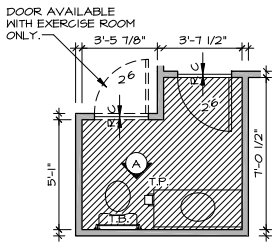
1
A-4
FOUNDATION PLAN
SCALE: 1/4" = 1'-0"

REV. NO.	DATE	REMARKS
25	3/17/08	SNIP - REV. AC & SHIRK DIMS (08-0744)
26	3/26/11	A.J.H. - 2011 CONCRETE PROJECT
21	4/18/06	ANS - REV. WATER HEATER LOCATION
22	1/26/07	CL5 - CREATED VERSION 09 - AFA
23	4/13/07	DCM - CREATED VERSION 9 / 2006 IRC
24	10/24/07	MBT - CREATED VER. 10 - CONSOLIDATION

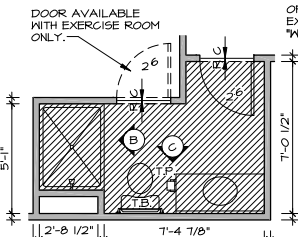
RYAN, Inc., owner, expressly reserves the common law copyright and other proprietary rights in this drawing. It is to be used only for the project and site for which it was prepared, and it is not to be reproduced, stored in a retrieval system, or transmitted in any form or by any means, electronic, mechanical, photocopying, recording, or otherwise, without the prior written consent of RYAN, Inc.



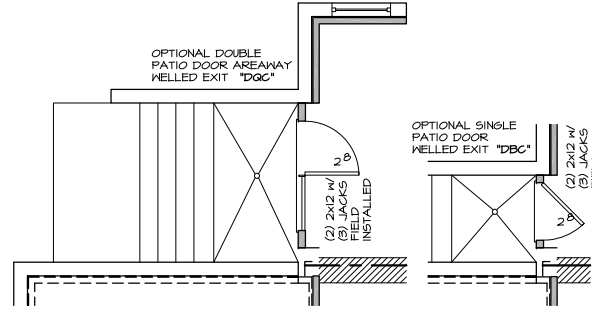
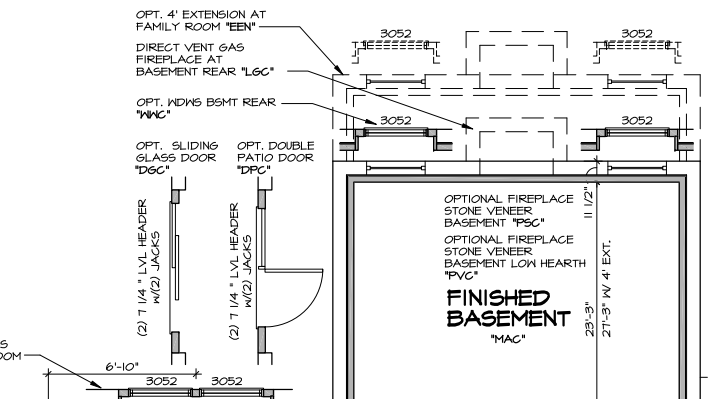
SHEET NO.	MODEL	SET NO.	VERSION	DATE
A-4	HIGHGROVE	H1000	10	08/12/12
	DRAWING TITLE			
	PLUMBING PLAN			
	OPTION DESCRIPTION			
15				



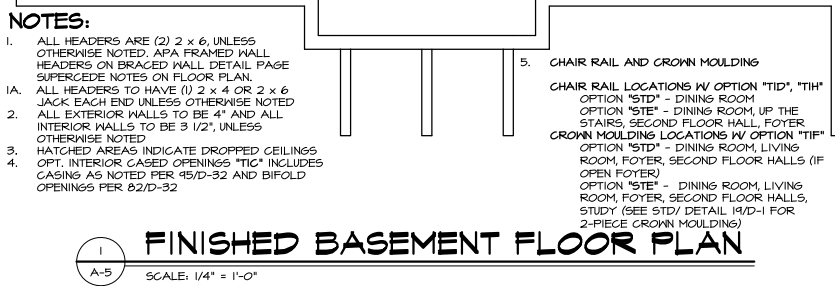
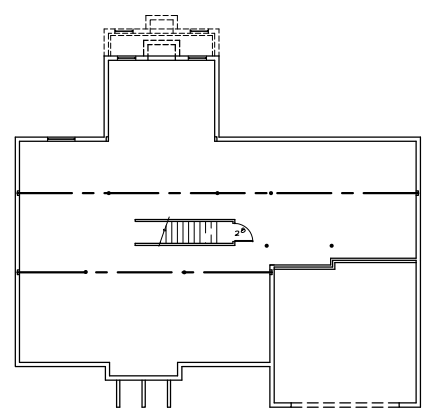
4 POWDER ROOM
A-5 SCALE: 1/4" = 1'-0" *APC*



3 PWD RM W/ SHOWER
A-5 SCALE: 1/4" = 1'-0" *APA*



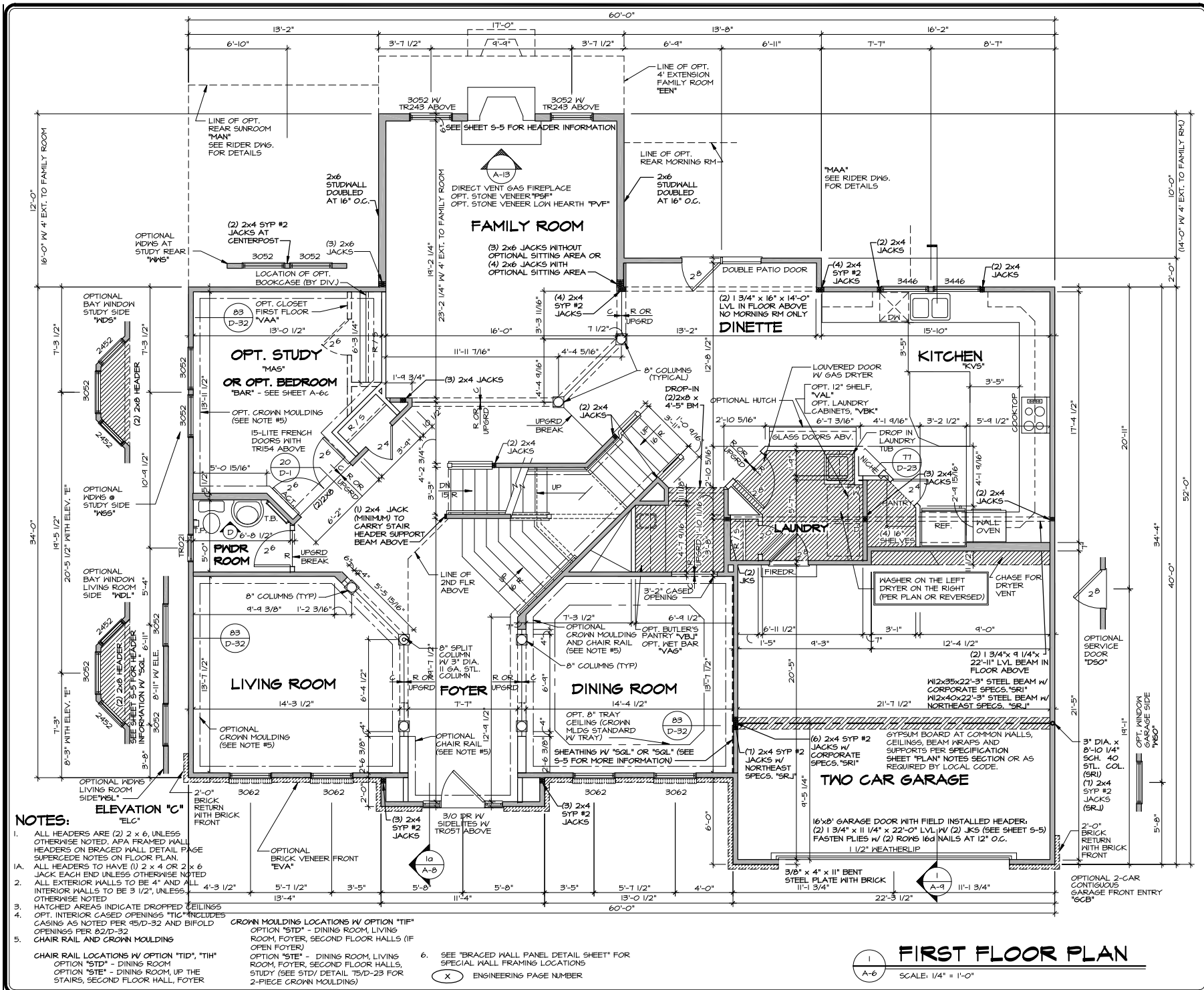
6 WELLED EXIT PARTIALS
A-5 SCALE: 1/4" = 1'-0"



SHEET NO.	MODEL	VERSION	DRAWN BY	OPTION DESCRIPTION	SET NO.	REMARKS	
						DATE	REV. NO.
A-5	HIGHGROVE	1.0	MMT	FINISHED BSMT FLOOR PLAN	HIGOO	1	14/09/06/098 - REV. 041 HP PWT MDTM
						2	0/24/07 MDT - CREATED VER. 1.0 - CONSOLIDATION
						3	4/02/07 DCA - CREATED VERSION 3 / 2006 IRC
						4	1/26/07 GLS - CREATED VERSION 06 - APA

MFR, Inc. hereby represents and warrants that the information contained herein is true and correct to the best of our knowledge and belief at the time of preparation and is not intended to constitute a contract. It is the responsibility of the user to verify the accuracy of the information and to ensure compliance with all applicable codes and regulations. The information is provided as a guide only and does not constitute a warranty. No liability shall be assumed for any errors or omissions. © 2006 Ryan Homes, Inc.





NOTES:

- ALL HEADERS ARE (2) 2 x 6, UNLESS OTHERWISE NOTED. APA FRAMED WALL HEADERS ON BRACED WALL DETAIL PAGE SUPERCEDE NOTES ON FLOOR PLAN.
- ALL HEADERS TO HAVE (1) 2 x 4 OR 2 x 6 JACK EACH END UNLESS OTHERWISE NOTED. ALL EXTERIOR WALLS TO BE 4" AND ALL INTERIOR WALLS TO BE 3 1/2", UNLESS OTHERWISE NOTED.
- HATCHED AREAS INDICATE DROPPED CEILINGS.
- OPT. INTERIOR GASED OPENINGS "TIC" INCLUDES CASING AS NOTED PER 45/D-32 AND BIFOLD OPENINGS PER 82/D-32.
- CHAIR RAIL LOCATIONS W/ OPTION "TID", "TH" OPTION "STD" - DINING ROOM OPTION "STE" - DINING ROOM, UP THE STAIRS, SECOND FLOOR HALL, FOYER

ELEVATION "C" "ELC"

2'-0" BRICK RETURN WITH BRICK FRONT

OPTIONAL BRICK VENEER FRONT "EVA"

CROWN MOULDING LOCATIONS W/ OPTION "TIF" OPTION "STD" - DINING ROOM, LIVING ROOM, FOYER, SECOND FLOOR HALLS (IF OPEN FOYER) OPTION "STE" - DINING ROOM, LIVING ROOM, FOYER, SECOND FLOOR HALLS, STUDY (SEE STD/ DETAIL 75/D-23 FOR 2-PIECE CROWN MOULDING)

- SEE "BRACED WALL PANEL DETAIL SHEET" FOR SPECIAL WALL FRAMING LOCATIONS
- ENGINEERING PAGE NUMBER

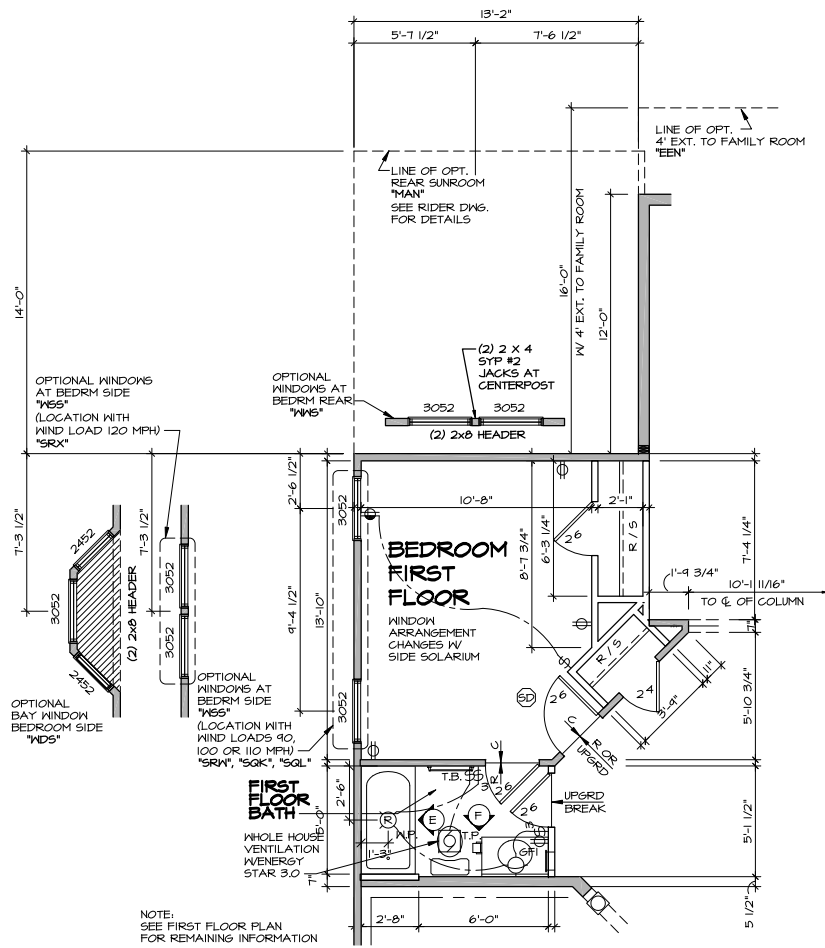
FIRST FLOOR PLAN

SCALE: 1/4" = 1'-0"

SHEET NO. A-6	MODEL	HIGHGROVE	SET NO. HIGOO	REMARKS
	DRAWING TITLE	FIRST FLOOR PLAN	VERSION 10	DATE
	OPTION DESCRIPTION		DRAWN BY	DATE
			DAD	DATE
			OPTION	DATE

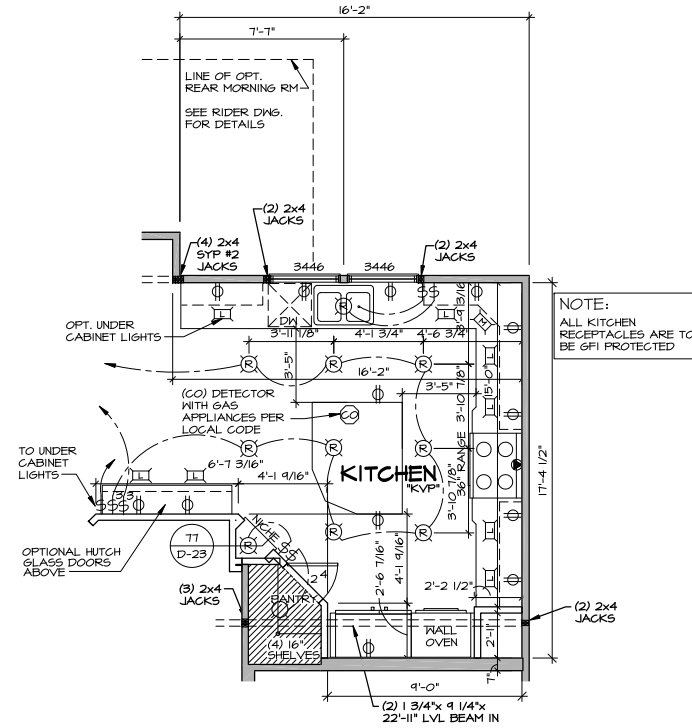
W.H. Inc. owns copyright in common law copyright and other rights in this drawing. It is to be used only for the project, reproduced, changed, or copied in any form or manner whatsoever, without the express written consent of W.H. Inc.

41	4/29/11	1804	ADDED OPT. GIPR WINDOWS
40	3/4/11	1804	ADDED OPT. CLOSET FIRST FLOOR
39	1/23/10	1804	ADDED INS WALL BRACING
44	6/15/13	1804	REVISED COLUMN AT L/R TO II 6A
44	6/15/13	1804	DCS - REVISED COLUMN AT L/R TO II 6A



1 PARTIAL FIRST FLOOR PLAN
 SCALE: 1/4" = 1'-0"
 BEDROOM FIRST FLOOR, "BAR"

NOTE:
 ALL ELECTRICAL PLANS ARE SCHEMATIC ONLY AND NOT INTENDED AS ENGINEERED DRAWINGS. THESE PLANS REPRESENT THE DESIGN INTENT FOR SWITCH AND RECEPTACLE LOCATIONS. ADDITIONAL INFORMATION, IF REQUIRED, SHALL BE PROVIDED BY A LICENSED ELECTRICAL SUBCONTRACTOR OR ENGINEER.



2 OPTIONAL PROFESSIONAL KITCHEN
 SCALE: 1/4" = 1'-0"
 "KVP"

ELECTRICAL LEGEND

⊕	SINGLE POLE SWITCH
⊕ ₃	THREE WAY SWITCH
⊕ ₄	FOUR WAY SWITCH
⊕	DUPLEX RECEPTACLE
⊕ ₁	DUPLEX RECEPTACLE - BOTTOM HALF SWITCHED
⊕ ₂	DUPLEX RECEPTACLE - FLOOR MOUNTED
⊕ _{220V}	RECEPTACLE - 220V
⊕ _{GFI}	DUPLEX RECEPTACLE - GROUND FAULT INTERRUPT
⊕ _{WP/GFI}	DUPLEX RECEPTACLE - WEATHER PROOF AND GROUND FAULT INTERRUPT
⊕ _{SD}	SMOKE DETECTOR - WIRED IN SERIES
⊕ _{CO}	CARBON MONOXIDE DETECTOR
⊕ _{EFM}	EXHAUST FAN MOTOR
⊕ _{DC}	DOOR CHIME
⊕ _{LM}	LIGHT FIXTURE - WALL MOUNTED
⊕ _{CM}	LIGHT FIXTURE - CEILING MOUNTED
⊕ _R	LIGHT FIXTURE - RECESSED
⊕ _H	LIGHT FIXTURE - HANGING
⊕ _{FL}	LIGHT FIXTURE - FLUORESCENT
⊕ _{UCL}	LIGHT FIXTURE - UNDER CABINET LIGHT
⊕ _{P.C.}	PULLCHAIN LAMPHOLDER
⊕ _K	KEYLESS LAMPHOLDER

- NOTES:**
- ALL HEADERS ARE (2) 2 x 6, UNLESS OTHERWISE NOTED. APA FRAMED WALL HEADERS ON BRACED WALL DETAIL PAGE SUPERCEDE NOTES ON FLOOR PLAN.
 - ALL HEADERS TO HAVE (1) 2 x 4 OR 2 x 6 JACK EACH END UNLESS OTHERWISE NOTED
 - ALL EXTERIOR WALLS TO BE 4" AND ALL INTERIOR WALLS TO BE 3 1/2", UNLESS OTHERWISE NOTED
 - HATCHED AREAS INDICATE DROPPED CEILINGS
 - OPT. INTERIOR CASED OPENINGS "TIC" INCLUDES CASINGS AS NOTED PER 95/D-32 AND BIFOLD OPENINGS PER 82/D-32
 - CHAIR RAIL AND CROWN MOULDING
- CHAIR RAIL LOCATIONS HV OPTION "TID", "TH"
 OPTION "STD" - DINING ROOM
 OPTION "STE" - DINING ROOM, UP THE STAIRS, SECOND FLOOR HALL, FOYER
 CROWN MOULDING LOCATIONS HV OPTION "TIF"
 OPTION "STD" - DINING ROOM, LIVING ROOM, FOYER, SECOND FLOOR HALLS (IF OPEN FOYER)
 OPTION "STE" - DINING ROOM, LIVING ROOM, FOYER, SECOND FLOOR HALLS, STUDY (SEE STD/ DETAIL 15/D-23 FOR 2-PIECE CROWN MOULDING)
 - SEE "BRACED WALL PANEL DETAIL SHEET" FOR SPECIAL WALL FRAMING LOCATIONS

(X) ENGINEERING PAGE NUMBER

REVISIONS

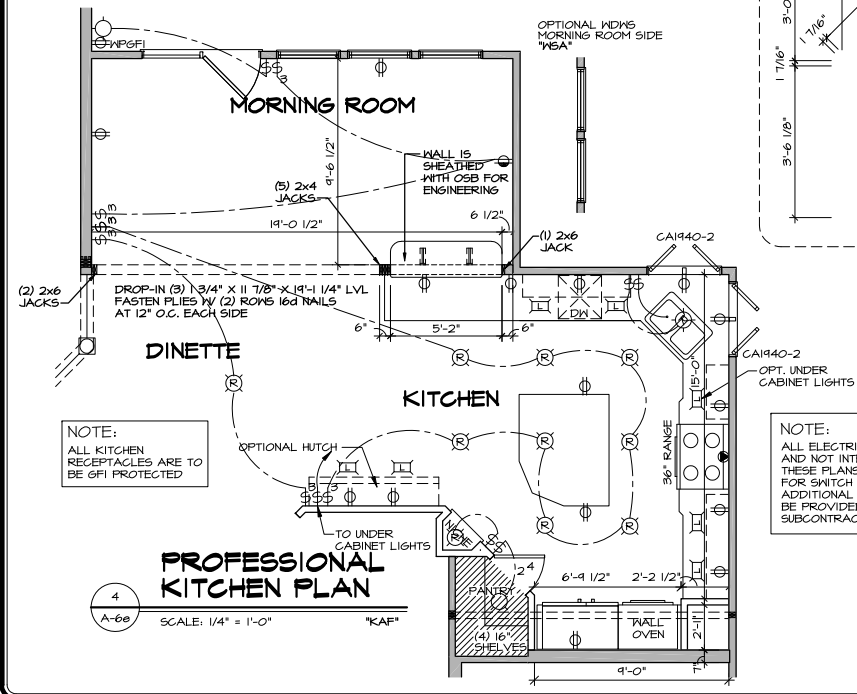
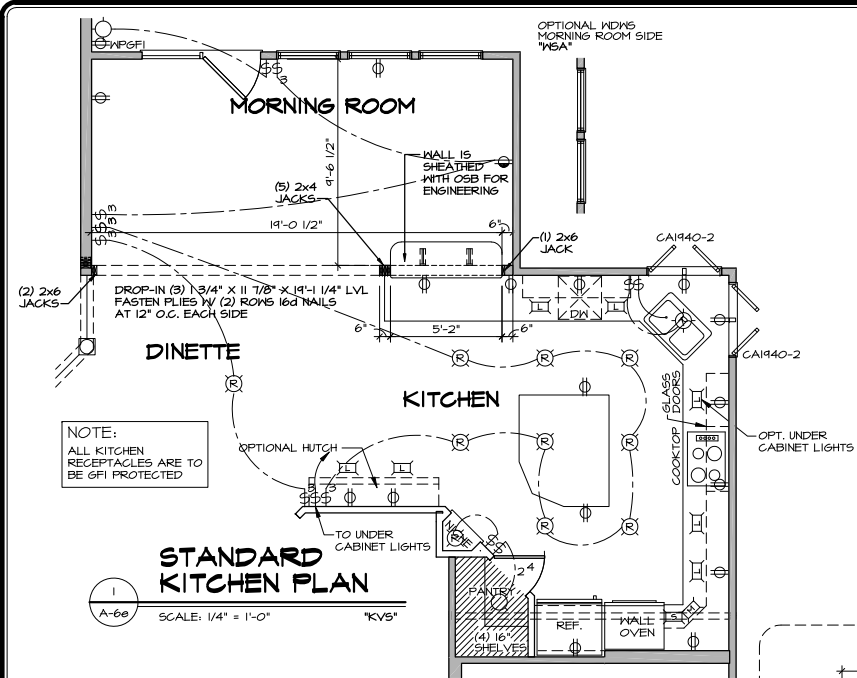
REV. NO.	DATE	REMARKS
31	12-15-11	KVP - ENERGY STAR 3.0 REVISIONS
32	6/6/12	KVE - KITCHEN FAN REMOVED
37	4/2/10	BCH - KESTIG ELEC. TAKEOFF REVS.
28	9/6/10	ZDH - ADDED REC. LIGHT AT TUB/SHWR.
29	7/14/11	RPK - REV "N65" WITH WIND LOADS

NOTE: ALL KITCHEN RECEPTACLES ARE TO BE GFI PROTECTED

WHY, Inc. owns copyright in common law copyright and other intellectual property rights in the drawings reproduced, changed, or copied in any form or manner whatsoever, without the express written consent of WHY, Inc.

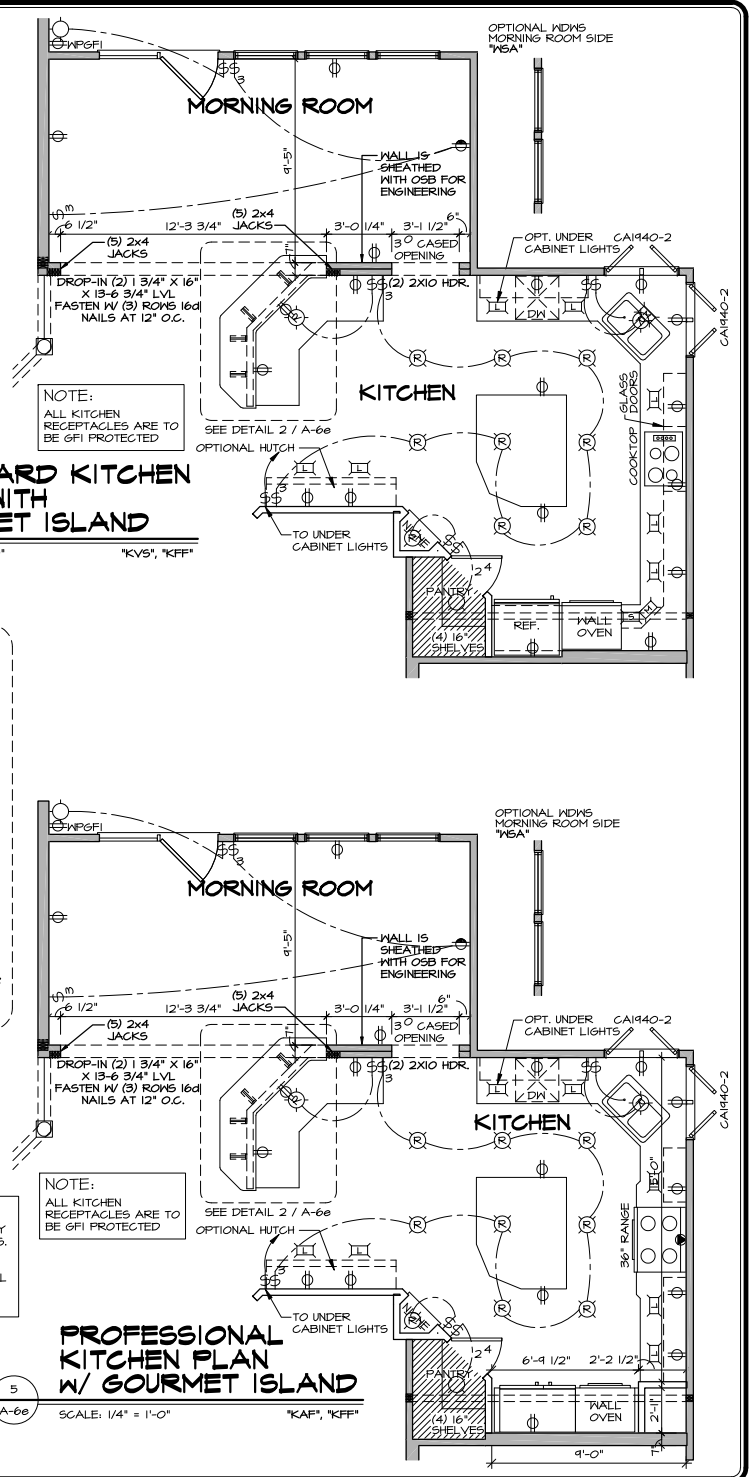
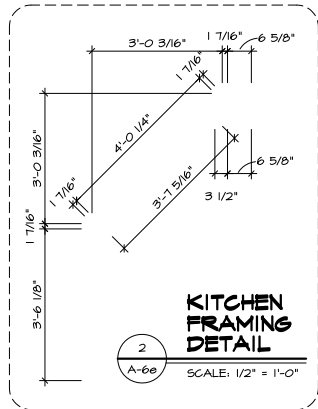
RYAN Homes

SHEET NO. **A-6C** MODEL **HIGHGROVE** SET NO. **HIGOO**
 DRAWING TITLE **FIRST FLOOR RIDER** VERSION **10**
 DRAWN BY **MMT** OPTION **OPTION**



3
A-6e
SCALE: 1/4" = 1'-0"
"KV5", "KFF"

STANDARD KITCHEN PLAN WITH GOURMET ISLAND

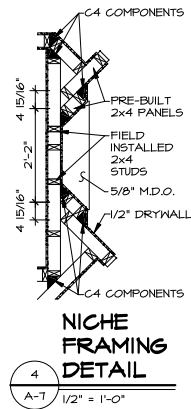
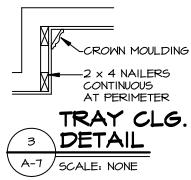
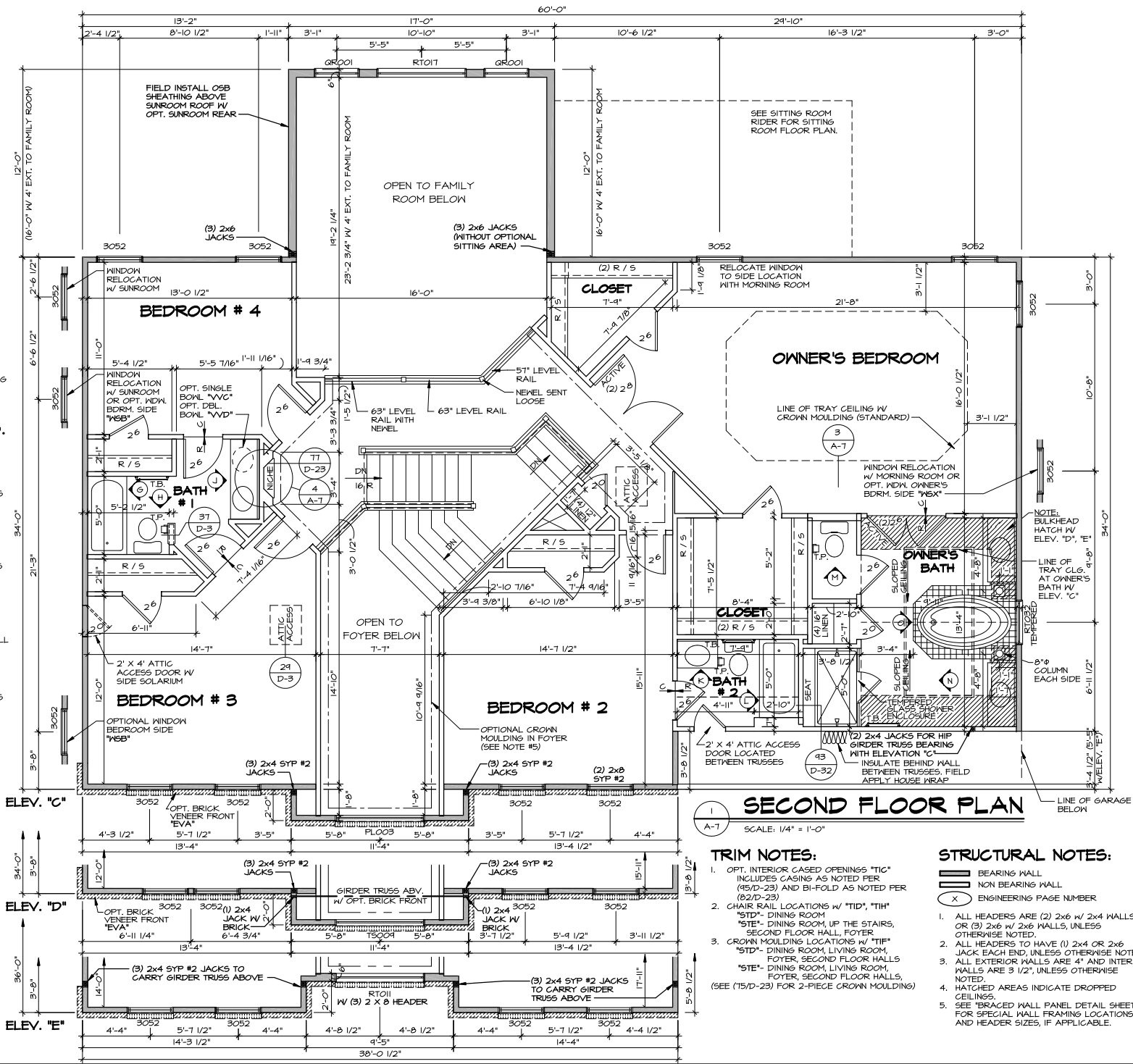


REV. NO.	DATE	REMARKS
31	8/26/13	EMS - 2013 KITCHEN PROJECT
32	7/26/08	SHM - UNDER CABINET LIGHT PROJECT
33	4/3/04	CHB - REMOVED CEILING FAN
34	11/25/04	SMP - 2004 PRODUCT UPDATE
35	12-15-11	KIN4 - ENERGY STAR 3.0 REVISIONS
36	6/6/12	MVE - KITCHEN FAN REMOVED

NWR, Inc., owner, expressly reserves the common law copyright and all other intellectual property rights in and to the drawings and specifications hereon prepared, and no part of this drawing or specification shall be reproduced, stored in a retrieval system, or transmitted in any form or by any means, electronic, mechanical, photocopying, recording, or otherwise, without the prior written consent of NWR, Inc. The express written consent of NWR, Inc.



SHEET NO.	MODEL	SET NO.	HIGOO
A-6e	HIGHGROVE	10	VERSION 10
	DRAWING TITLE		DRAWN BY
	KITCHEN LAYOUT		MMT
	OPTION DESCRIPTION		OPTION
	W/ MORNING ROOM		MAA
			DATE
			08/28/13 - 7:16 am



REV. NO.	DATE	REMARKS
51	11/25/04	SRP - 2008 PROJECT UPDATE
50	2/9/11	BDH - ADDED OPT. ENERGY STAR 2.5
34	4/25/11	BDH - ADDED OPTIONAL SIDE WINDOWS
40	4/25/12	ASB - ELABORATED INBL. NOTE (18P7)
41	4/21/12	BDH - STANDARDIZED OPT. "5YC"

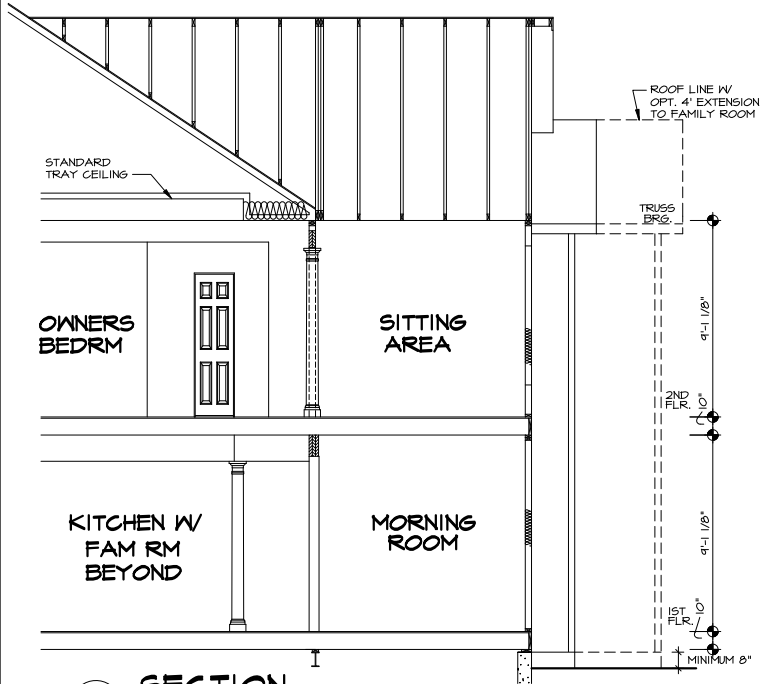
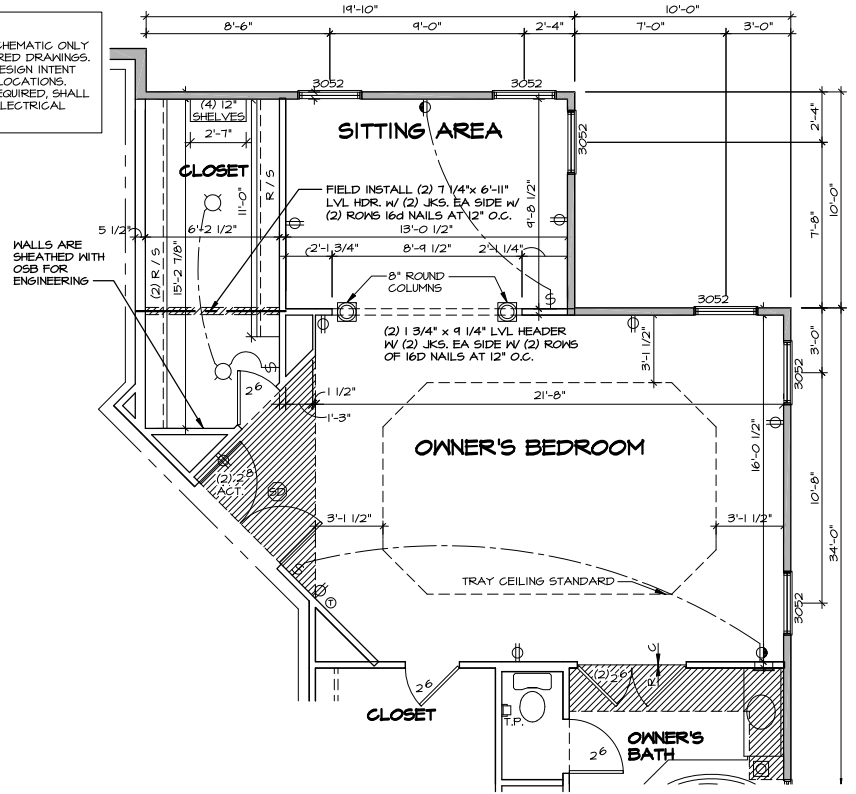
W/S: THE CLIENT HEREBY RELEASES THE COMPANY FROM LIABILITY AND OTHER PROPERTY RIGHTS IN THESE PLANS. THESE PLANS ARE NOT TO BE REPRODUCED, CHANGED, OR COPIED IN ANY FORM OR MANNER WHATSOEVER, WITHOUT THE WRITTEN CONSENT OF RYAN, INC.



SET NO. HIG00
VERSION 10
DRAWN BY MMT
OPTION

SHEET NO.	MODEL	DESCRIPTION
A-7	HIGHGROVE	SECOND FLOOR PLAN

NOTE:
ALL ELECTRICAL PLANS ARE SCHEMATIC ONLY AND NOT INTENDED AS ENGINEERED DRAWINGS. THESE PLANS REPRESENT THE DESIGN INTENT FOR SWITCH AND RECEPTACLE LOCATIONS. ADDITIONAL INFORMATION, IF REQUIRED, SHALL BE PROVIDED BY A LICENSED ELECTRICAL SUBCONTRACTOR OR ENGINEER.

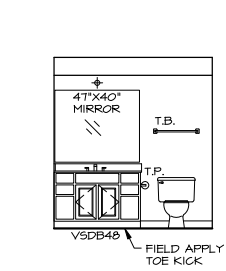


REV. NO.	DATE	REMARKS
31	11/25/04	SHIP - 2004 PRODUCT UPDATE
32	3/2/11	BDH - ADDED DROPPED CLG. AT BDRK.
34	5/23/12	PR.A. - 2012 PRODUCT UPDATE
40	9/2/12	BDH - STANDARDIZED OPT. "STC"
41	10/24/17	MMT - CREATED VER 12 - COMPANY IDATION

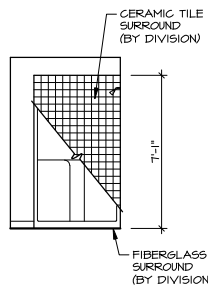
MR. Inc. owners expressly reserved. In common law copyright and without limitation all rights are reserved. This plan may not be reproduced, changed, or copied in any form or manner whatsoever, without the express written consent of MR, Inc.

Ryan Homes

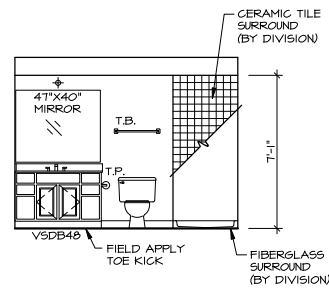
SHEET NO.	MODEL	SET NO.	VERSION
A-7b	HIGHGROVE	H1000	10
DRAWN BY	DRAWING TITLE	DRAWN BY	OPTION
MMT/DAD	SECOND FLOOR RIDER	MMT/DAD	OPTION
2 1	OPTION DESCRIPTION		



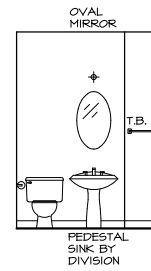
A PWD RM BSMT
SCALE: 1/4" = 1'-0"



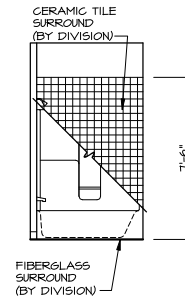
B PWD RM BSMT
SCALE: 1/4" = 1'-0"



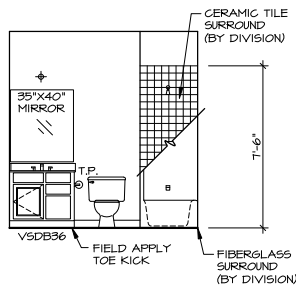
C PWD RM BSMT
SCALE: 1/4" = 1'-0"



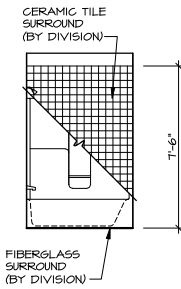
D POWDER ROOM
SCALE: 1/4" = 1'-0" FIRST FLR



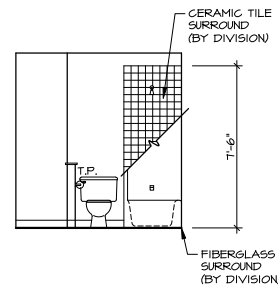
E FIRST FLOOR BATH
SCALE: 1/4" = 1'-0"



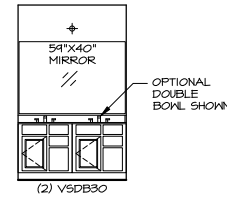
F FIRST FLOOR BATH
SCALE: 1/4" = 1'-0"



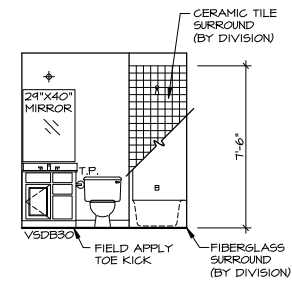
G BATH #1
SCALE: 1/4" = 1'-0"



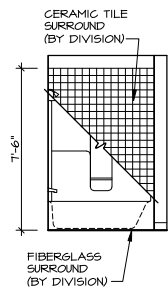
H BATH #1
SCALE: 1/4" = 1'-0"



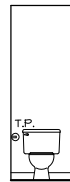
J BATH #1
SCALE: 1/4" = 1'-0"



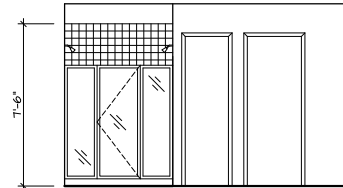
K BATH #2
SCALE: 1/4" = 1'-0"



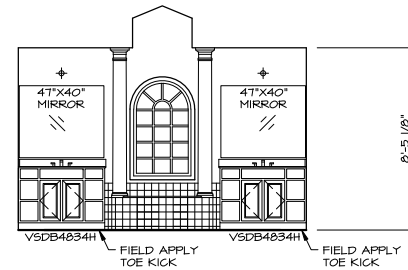
L BATH #2
SCALE: 1/4" = 1'-0"



M OWNER'S BATH
SCALE: 1/4" = 1'-0"



N OWNER'S BATH
SCALE: 1/4" = 1'-0"



O OWNER'S BATH
SCALE: 1/4" = 1'-0"

I BATH ELEVATIONS
SCALE: 1/4" = 1'-0"

NOTES:
TEMPERED GLASS
SHOWER ENCLOSURE
WITH SWING DOOR OR
OPTIONAL SLIDING DOOR
BY DIVISION

REV. NO.	DATE	REMARKS
14	3/25/13	C658 - REV. OWNER'S BATH SHR TILE HT
14	4/18/13	DC24 - CREATED VERSION 4 / 2026 IRC
15	10/22/13	SNF - TIERERLASE CONVERSION
16	10/24/13	SNF - CREATED VRC 10 - CONSOLIDATION
17	1/5/14	SNF - 2004 PRODUCT UPDATE
18	4/23/14	BDH - REMOVED RMT REFERENCE

NRG, Inc. expressly warrants the content for copyright and other property rights in these plans. These plans are not to be reproduced, changed, or copied in any form or manner whatsoever without the express written consent of NRG, Inc.



SHEET NO.	MODEL	SET NO.	HIG00
A-12	HIGHGROVE	VERSION 1.0	
	DRAWING TITLE	DRAWN BY	MMT
	BATH ELEVATIONS	OPTION	
48	OPTION DESCRIPTION		