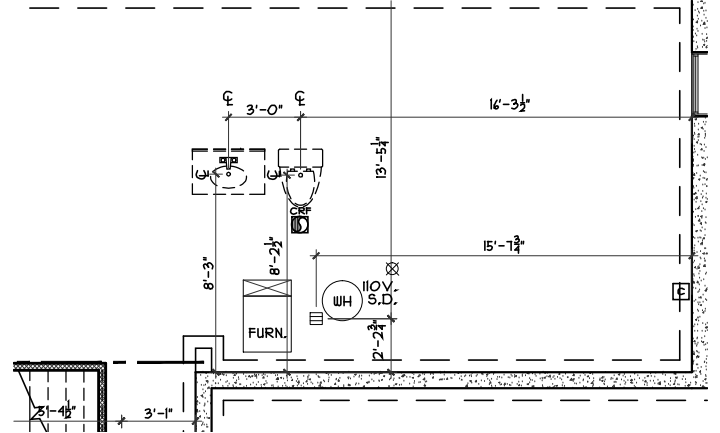
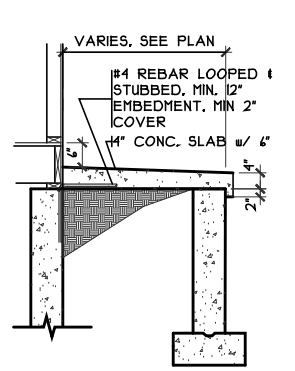


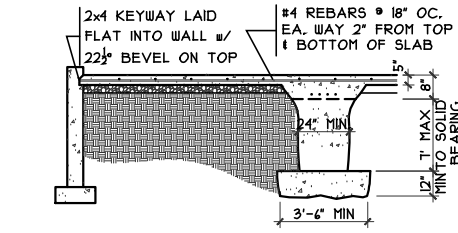
1 COLUMN DETAIL
SCALE: 1/4" = 1'-0"



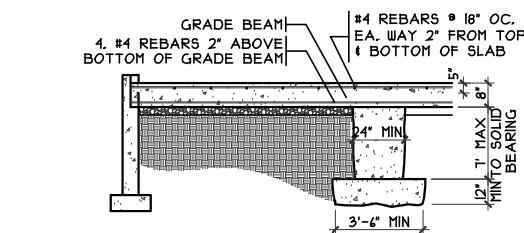
PLUMBING/STRUCTURE DIMS
SCALE: 1/8" = 1'-0"



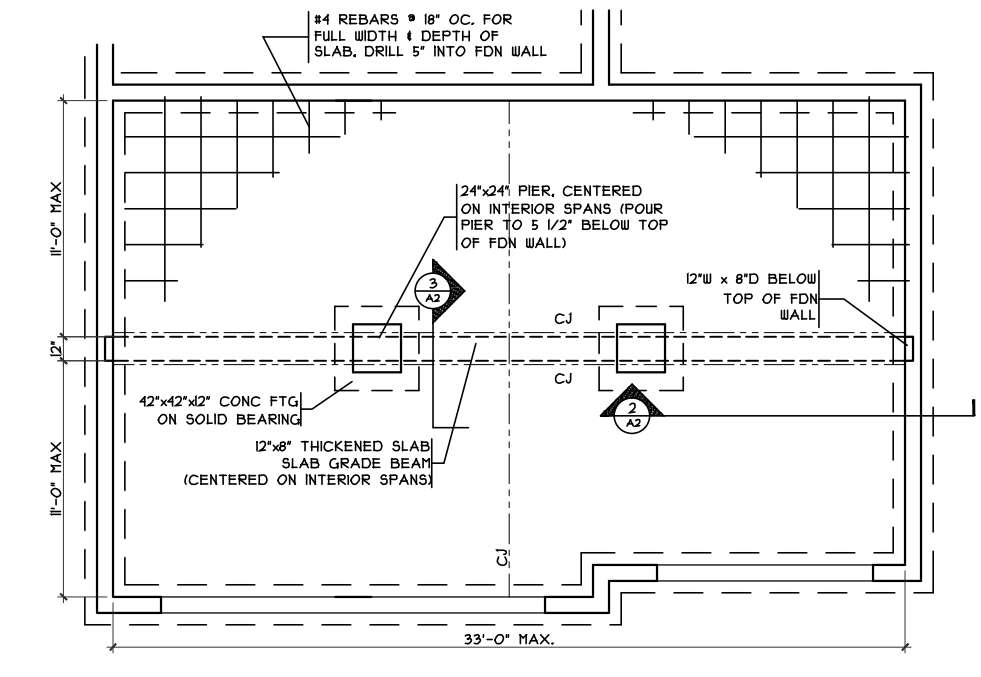
PORCH SLAB DETAIL
SCALE: 1/4" = 1'-0"



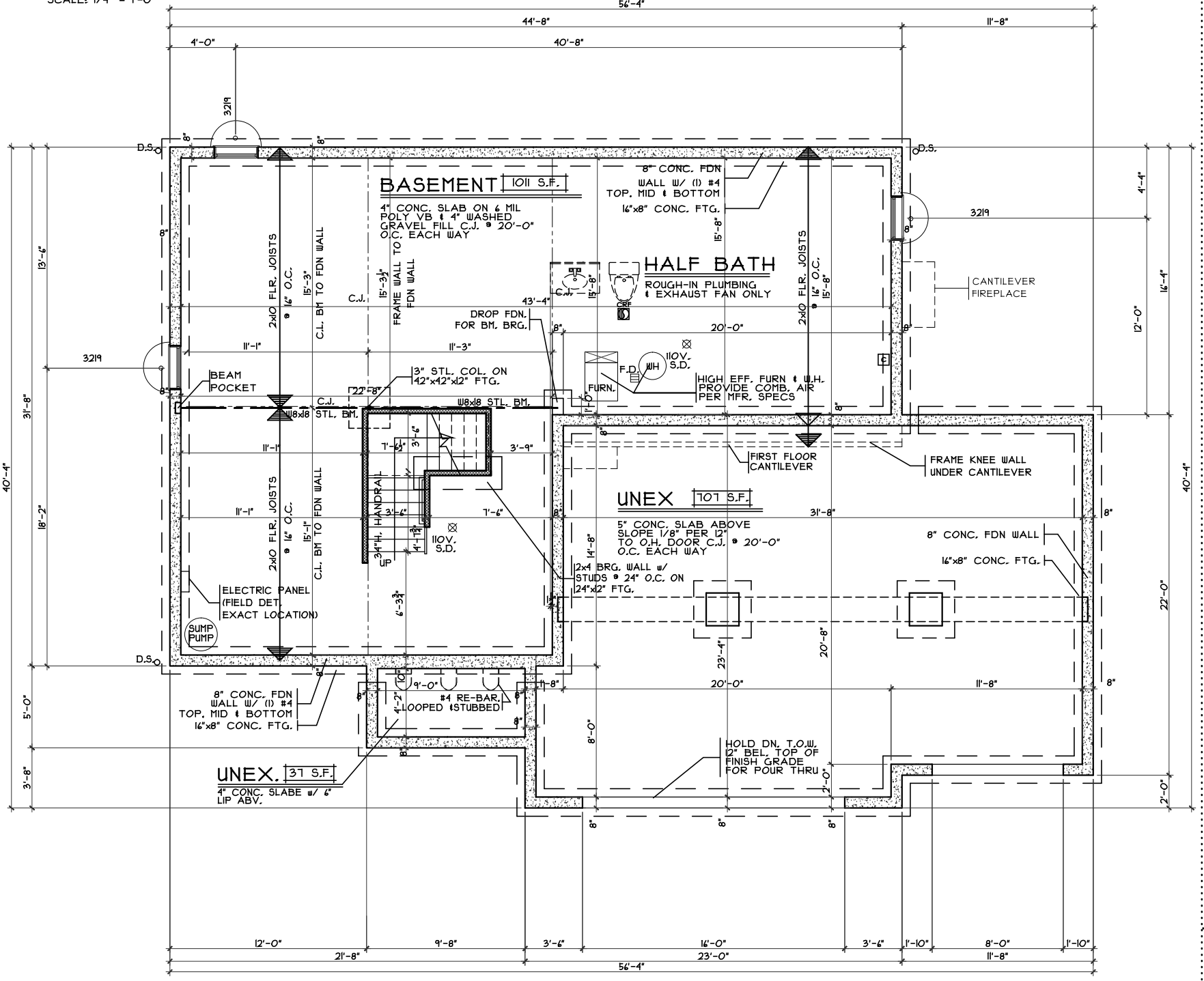
2 GRADE BM SECTION
SCALE: 1/8" = 1'-0"



3 GRADE BM SECTION
SCALE: 1/8" = 1'-0"



3 GRADE BM DETAIL
SCALE: 1/8" = 1'-0"



FOUNDATION PLAN
SCALE: 1/8" = 1'-0"

Foundation Plan - Traditional

Proposed Residence: Market Home
5404 Bayside Court
Lot #123 Harbour Towne Park

Middletown, OH
Warren County

HTP4-123

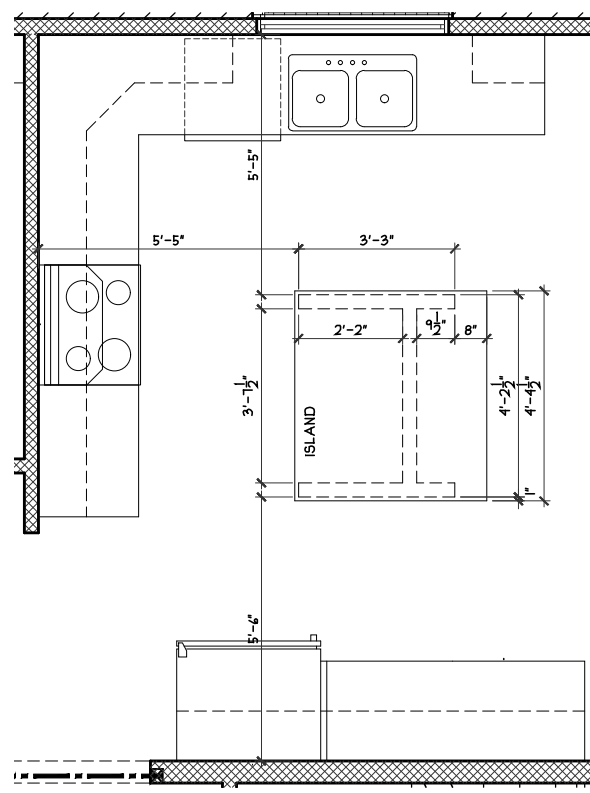
Issue Dates:
Reviewed 3.8.2016
Reviewed 3.18.2016
Reviewed 4.5.2016

Plan : Morleigh
Date : 3.3.2016
Drawn: CKB
Scale : As Noted
Revised: 5.3.2016
Sheet : 5 of 12

CRISTO HOMES
7594-A Tyers Place Blvd.
West Chester, OH 45069
513.755.0570 www.cristohomes.com

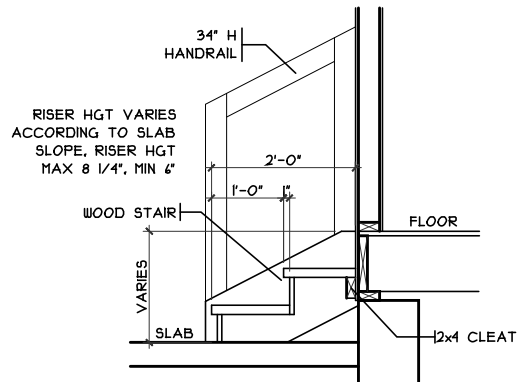
Morleigh - Traditional - Vinyl
Cristo Homes reserves all property rights in these plans. These plans are not to be reproduced, changed, or copied in any manner. They are not to be given to a third party, either in full or in part, without first receiving written permission from Cristo Homes. In the event these plans are used by a third party, Cristo Homes shall be held harmless.

A2



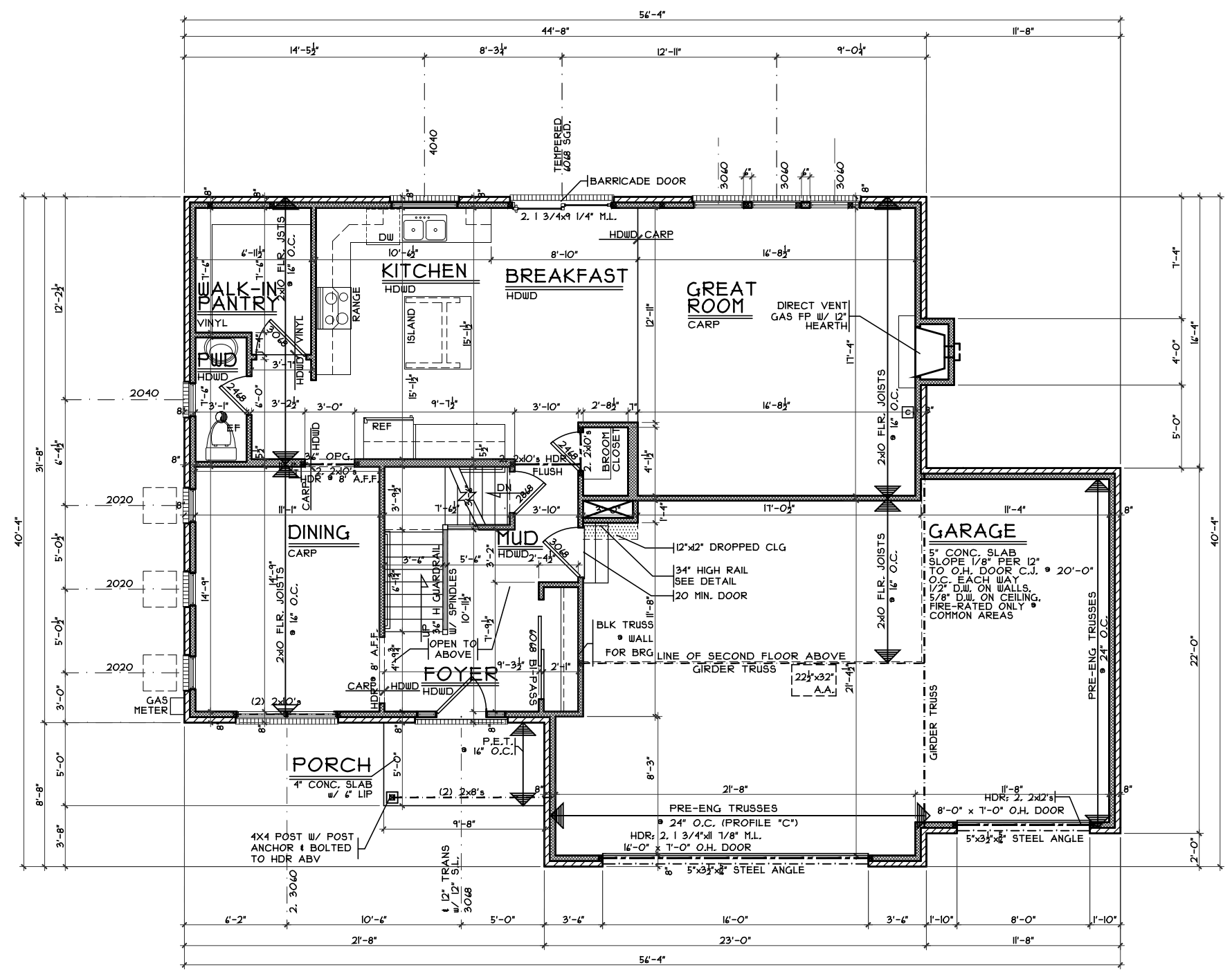
ISLAND FRAMING DETAIL

SCALE: 1/4" = 1'-0"



GARAGE HANDRAIL DETAIL

SCALE: 3/8" = 1'-0"



FIRST FLOOR PLAN

SCALE: 1/8" = 1'-0" IAI S.F.

First Floor Plan

Plan : Morleigh
 Date : 3.3.2016
 Drawn: CKB
 Scale : As Noted
 Revised: 5.3.2016
 Sheet : 7 of 12

H1P4-123

Proposed Residence:
 Market Home
 5404 Bayside Court
 Lot #123 Harbour Towne Park



7994-A Tyers Place Blvd.
 West Chester, OH 45069
 513.755.0570 www.cristohomes.com

Morleigh - Traditional - Vinyl

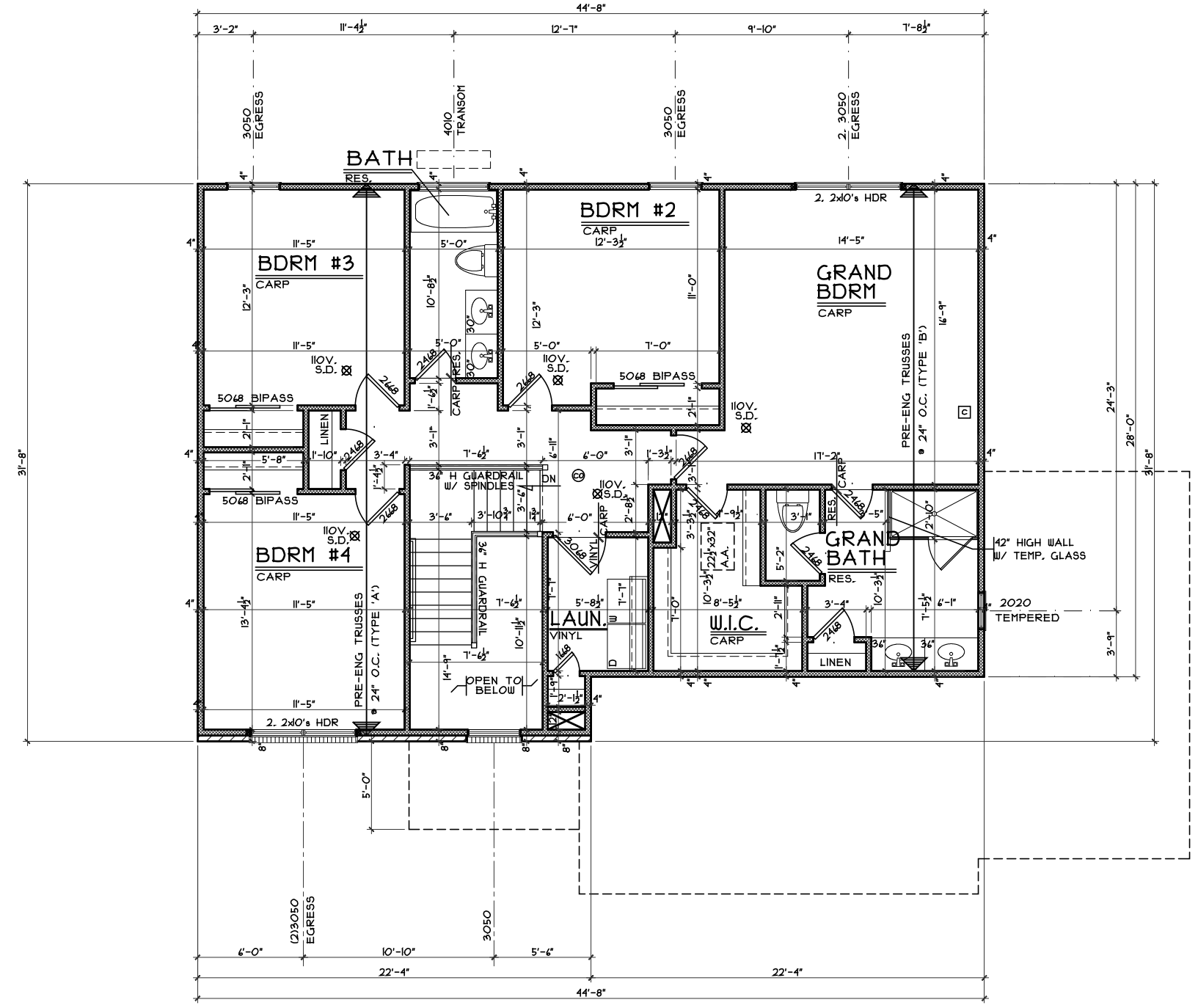
Cristo Homes reserves all property rights in these plans. These plans are not to be reproduced, changed, or copied in any manner. They are not to be given to a third party, either in full or in part, without first receiving written permission from Cristo Homes. In the event these plans are used by a third party, Cristo Homes shall be held harmless.

Issue Dates

Reviewed	3.8.2016
Reviewed	3.18.2016
Reviewed	4.5.2016

Middletown, OH
 Warren County

A3



SECOND FLOOR PLAN
SCALE: 1/8" = 1'-0" 1214 S.F

Second Floor Plan

Plan : Morleigh
Date : 3.3.2016
Drawn: CKB
Scale : As Noted
Revised: 5.3.2016
Sheet : 11 of 12

HTP4-123

Proposed Residence:
Market Home
5404 Bayside Court
Lot #123 Harbour Towne Park

Middletown, OH
Warren County

Morleigh - Traditional - Vinyl

Cristo Homes reserves all property rights in these plans. These plans are not to be reproduced, changed, or copied in any manner. They are not to be given to a third party, either in full or in part, without first receiving written permission from Cristo Homes. In the event these plans are used by a third party, Cristo Homes shall be held harmless.

Issue Dates

Reviewed	3.8.2016
Reviewed	3.18.2016
Reviewed	4.5.2016



7994 A Tyers Place Blvd.
West Chester, OH 45069
513.755.0570 www.cristohomes.com

A4