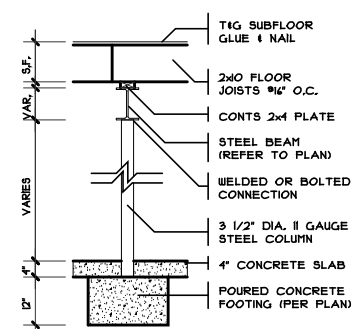
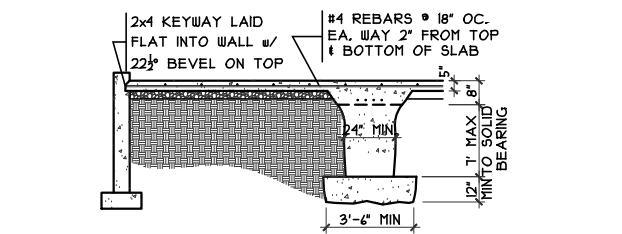


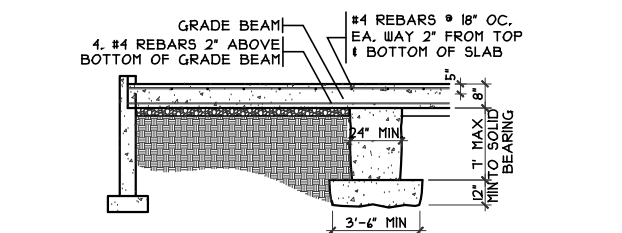
**1 THICKENED SLAB DETAIL**  
SCALE: 1/4" = 1'-0"



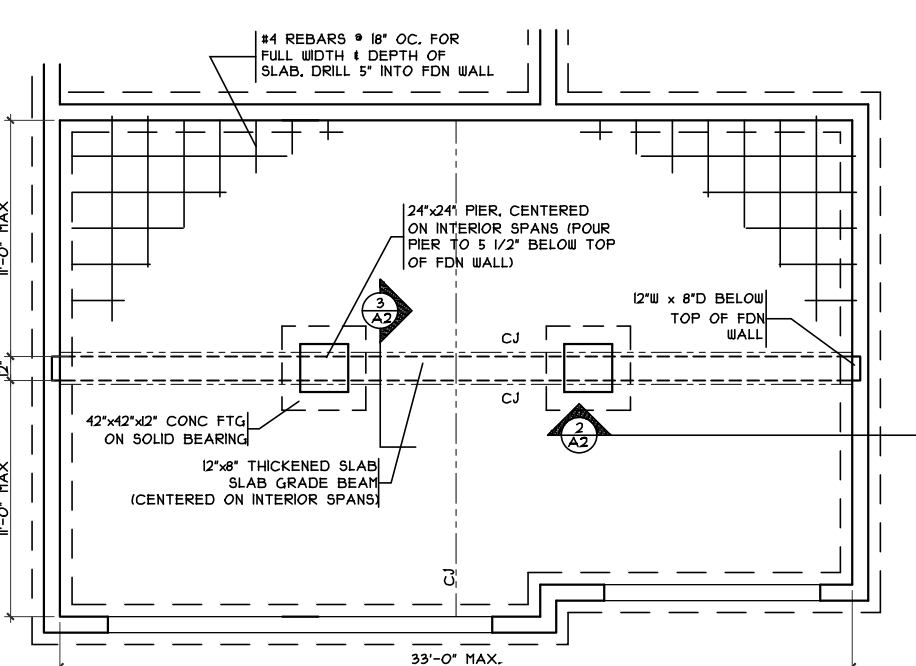
**COLUMN DETAIL**  
SCALE: 1/4" = 1'-0"



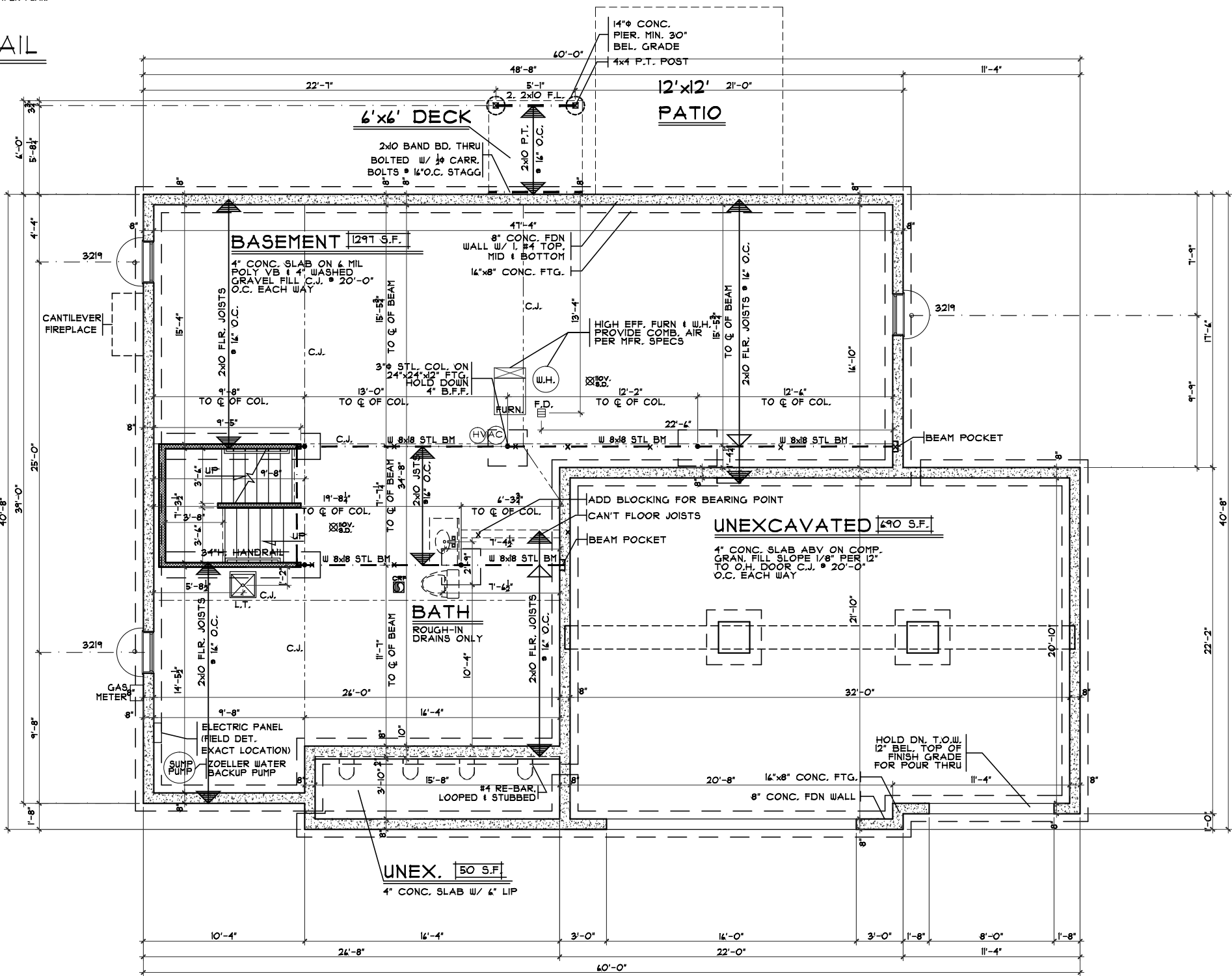
**2 GRADE BM SECTION**  
SCALE: 1/8" = 1'-0"



**3 GRADE BM SECTION**  
SCALE: 1/8" = 1'-0"



**GRADE BM DETAIL**  
SCALE: 1/8" = 1'-0"



**FOUNDATION PLAN**  
SCALE: 1/8" = 1'-0"

Orion - European - Brick Wrap - Vinyl - Issue Dates

Review	4/5/16
Review	4/15/16
Review	4/20/16
Review	5/11/16
Review	5/16/16

Cristo Homes reserves all property rights in these plans. These plans are not to be reproduced, changed, or copied in any manner. They are not to be given to a third party, either in full or in part, without first receiving written permission from Cristo Homes. In the event these plans are used by a third party, Cristo Homes shall be held harmless.

Proposed Residence:  
Henry Residence  
Mariners Way  
Harbour Towne Park Lot #131

Municipality  
County

European Foundation Plan  
HTP4-0131

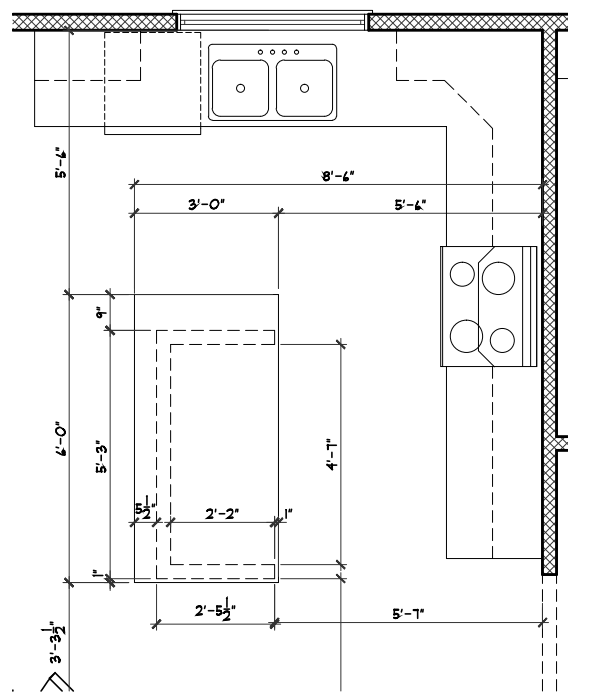
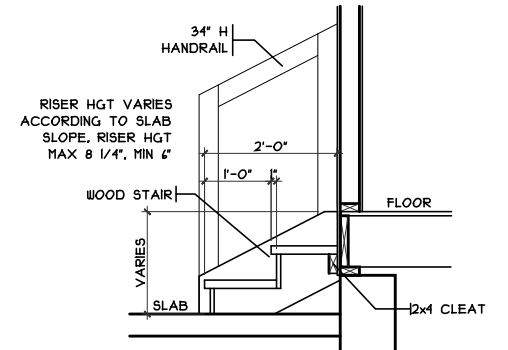
7594-A Tylers Place Blvd.  
West Chester, OH 45389  
513.755.0570 www.cristohomes.com

Plan : Orion  
Date : 3/24/16  
Drawn: CKB  
Scale : As Noted  
Revised: 5/16/16  
Sheet : 3 of 13

A2

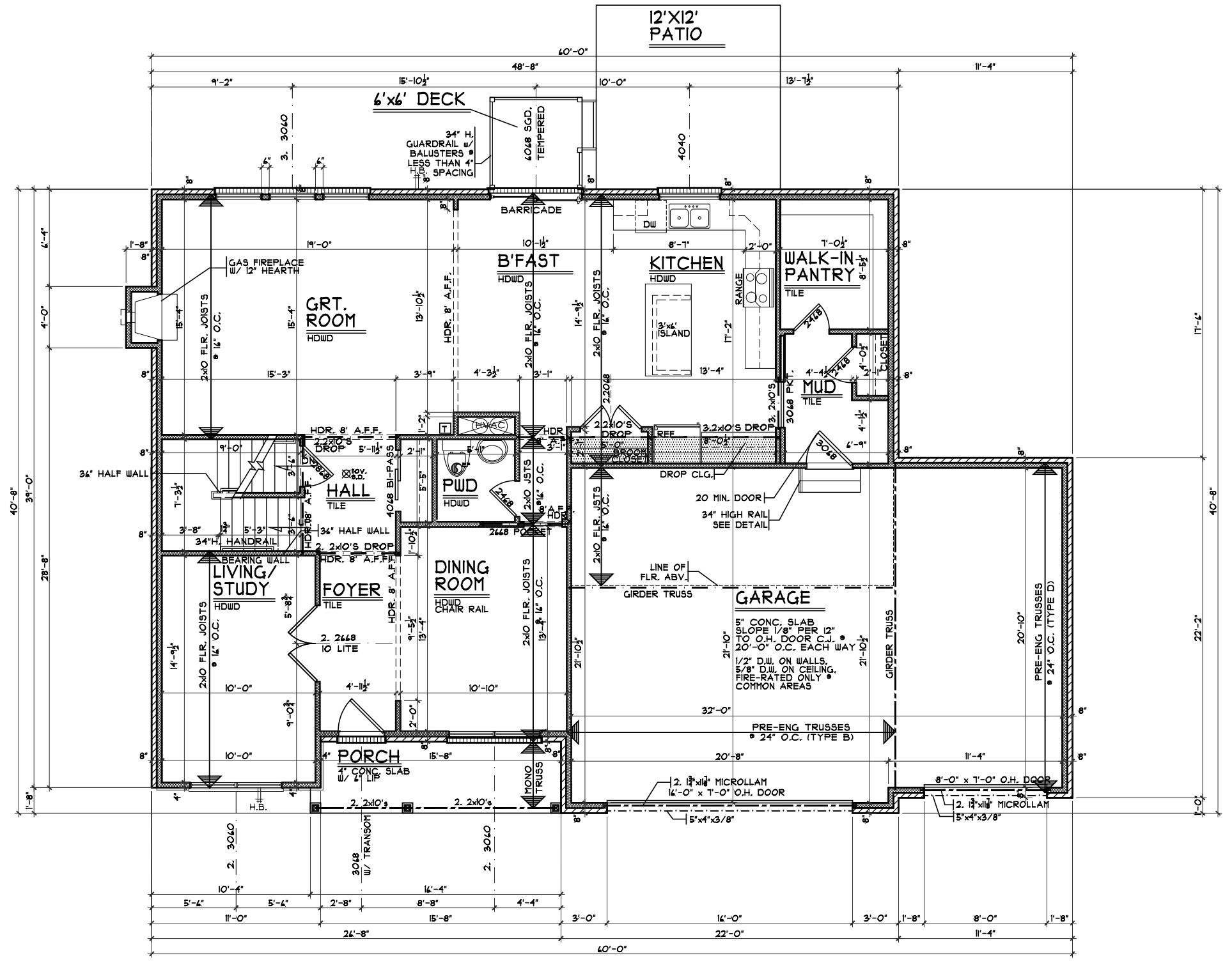
### GARAGE HANDRAIL DETAIL

SCALE: 3/8" = 1'-0"



### ISLAND FRAMING DETAIL

SCALE: 1/4" = 1'-0"



### FIRST FLOOR PLAN

SCALE: 1/8" = 1'-0" 1404 S.F.

European First Floor Plan

Plan : Orion  
Date : 3/24/16  
Drawn: CKB  
Scale : As Noted  
Revised: 5/16/16  
Sheet : 4 of 13



7594-A Tylers Place Blvd.  
West Chester, OH 45399  
513.755.0570 www.cristohomes.com

HTP4-0131

Proposed Residence:  
Henry Residence  
Mariners Way  
Harbour Towne Park Lot #131

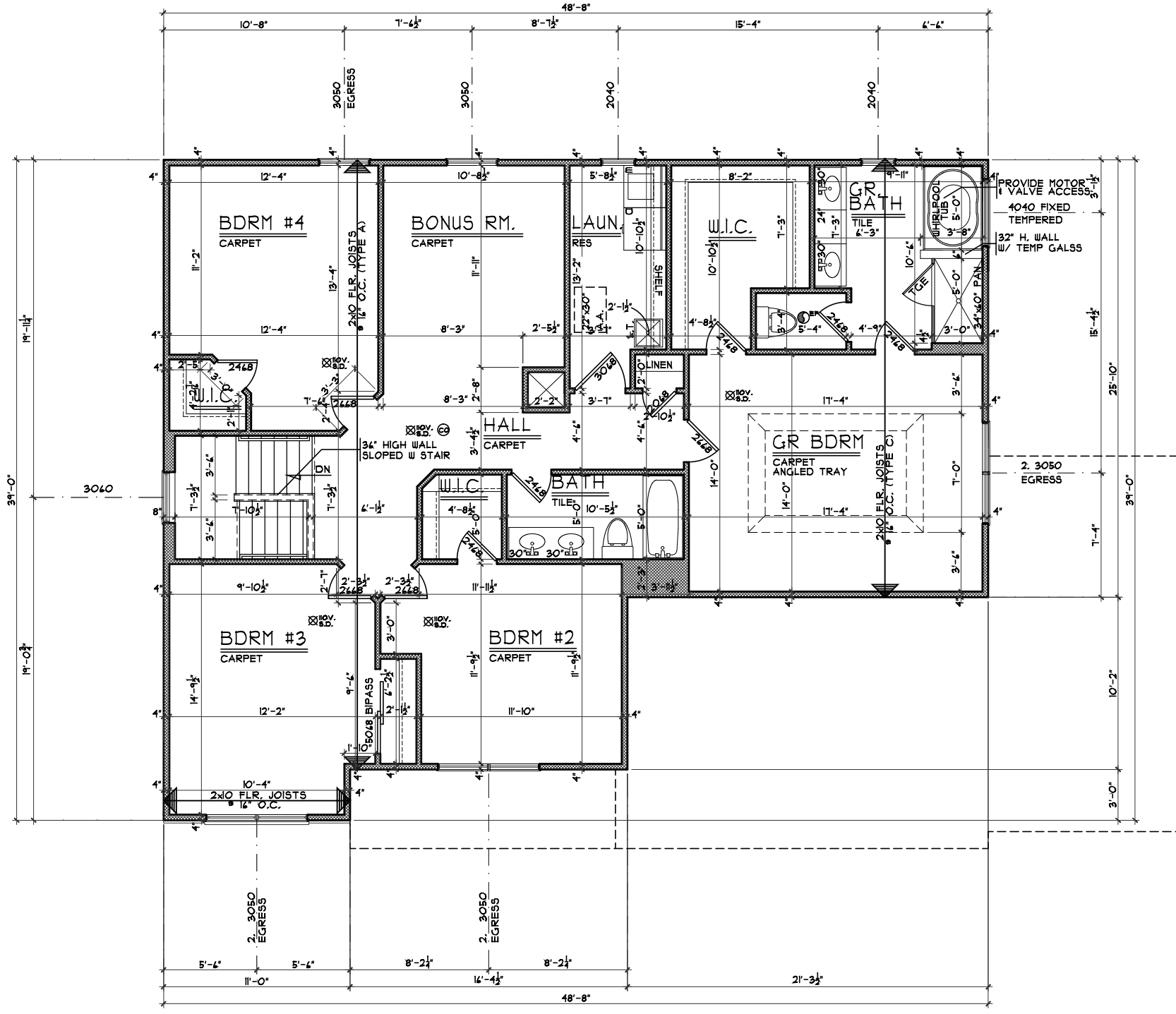
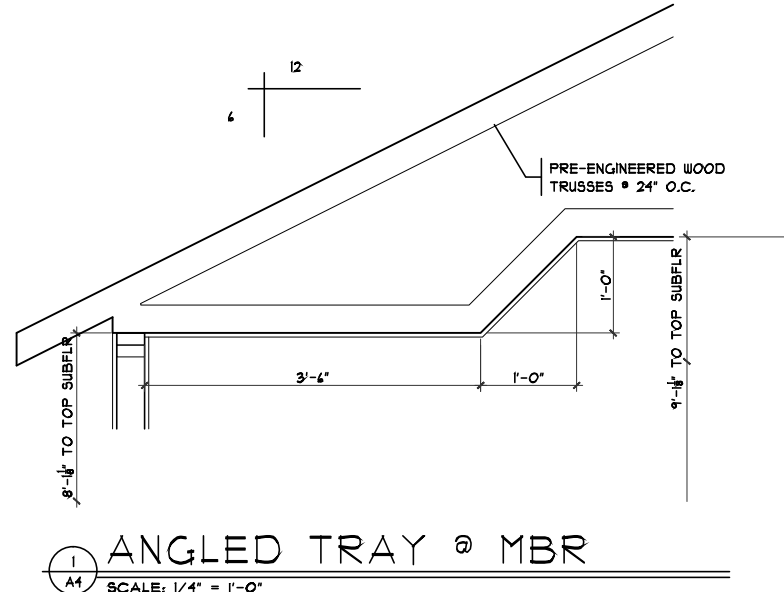
Municipality  
County

Orion - European - Brick Wrap - Vinyl Issue Dates

Review	4/5/16
Review	4/15/16
Review	4/20/16
Review	5/11/16
Review	5/16/16

Cristo Homes reserves all property rights in these plans. These plans are not to be reproduced, changed, or copied in any manner. They are not to be given to a third party, either in full or in part, without first receiving written permission from Cristo Homes. In the event these plans are used by a third party, Cristo Homes shall be held harmless.

A3



European Second Floor Plan

Plan : Orion  
 Date : 3/24/16  
 Drawn: CKB  
 Scale : As Noted  
 Revised: 5/16/16  
 Sheet : 12 of 13

HTP4-0131  
 Proposed Residence:  
 Henry Residence  
 Mariners Way  
 Harbour Towne Park Lot #131

Orion - European - Brick Wrap - Vinyl Issue Dates

Review	4/5/16
Review	4/15/16
Review	4/20/16
Review	5/11/16
Review	5/16/16

Municipality: \_\_\_\_\_  
 County: \_\_\_\_\_

CRISTO HOMES  
 7594-A Tylers Place Blvd.  
 West Chester, OH 45069  
 513.755.0570 www.cristohomes.com

A4