

BOLTED 2x6 LEDGER THRU  
1/2" CARRIAGE  
BOLTS-STAGG. @ 24" O.C.

8" CONC. FDN WALL  
W/ (1) #4 TOP, MID & BOT

16"x8" CONC. FTG.

**BASEMENT** 1230 S.F.

4" CONC. SLAB ON 4 MIL  
POLY VB & 4" WASHED  
GRAVEL FILL C.J. @ 20'-0"  
O.C. EACH WAY

HIGH EFF. FURN & W.H.  
PROVIDE COMB. AIR  
PER MFR. SPECS

DROP FDN. 1" FOR BM. BRG.

2x4 BRG. WALL W/  
STUDS @ 24" O.C. ON  
24"x2" THICK. SLAB

3" STL. COL. ON  
30"x30"x18" FTG. W/  
#4's @ 12" O.C. EACH  
WAY. HOLD DN.  
4" B.F.F.

W8x8 STEEL BEAM  
21'-9"

BEAM POCKET  
8"Wx 1'Hx 4" D

34"H. HANDRAIL

36" HIGH WALL  
W/ WD. CAP

NOV.  
S.D.

SUMP  
PUMP

**UNEXCAVATED** 640 S.F.

5" CONC. SLAB ABV  
SLOPE 1/8" PER 12"  
TO O.H. DOOR C.J. @  
20'-0" O.C. EACH WAY

**UNEX.** 34 S.F.

4" CONC. SLAB ABV

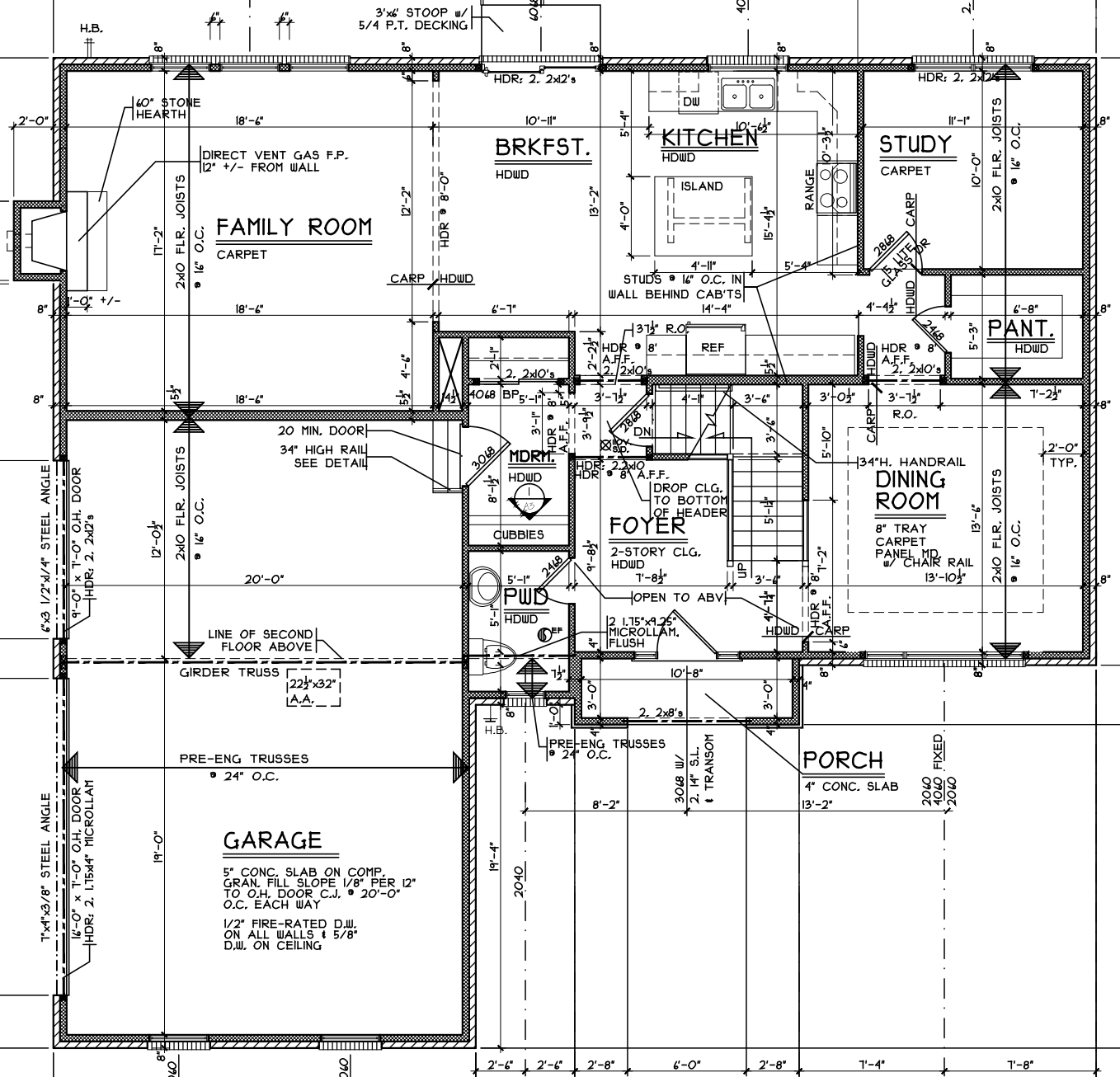
HOLD DN. T.O.W.  
12" BEL. TOP OF  
FINISH GRADE  
FOR POUR THRU

8" CONC. FDN WALL

16"x8" CONC. FTG.

8" CONC. FDN WALL  
W/ (1) #4 TOP, MID & BOT.

16"x8" CONC. FTG.



**FAMILY ROOM**  
CARPET

**BRKFST.**  
HDWD

**KITCHEN**  
HDWD

**STUDY**  
CARPET

**PANT.**  
HDWD

**DINOING ROOM**  
8" TRAY  
CARPET  
PANEL HD  
w/ CHAIR RAIL

**FOYER**  
2-STORY CLG.  
HDWD

**MDRY.**  
HDWD

**PWIS**  
HDWD

**GARAGE**

**PORCH**  
4" CONC. SLAB  
13'-2"

DIRECT VENT GAS F.P.  
12" +/- FROM WALL

20 MIN. DOOR  
34" HIGH RAIL  
SEE DETAIL

LINE OF SECOND  
FLOOR ABOVE

PRE-ENG TRUSSES  
• 24" O.C.

PRE-ENG TRUSSES  
O.C.

2060  
4060  
2060  
FIXED

2x10 FLR. JOISTS  
• 16" O.C.

2x10 FLR. JOISTS  
• 16" O.C.

19'-0"

HDR: 2, 2x12's

HDR: 2, 2x12's

2x10 FLR. JOISTS  
• 16" O.C.

CARP. HDWD

STUDS • 16" O.C. IN  
WALL BEHIND CAB'TS  
14'-4"

2x12  
GLASS FRONT  
CABINET

4x4

4x4

4x4

4x4

4x4

4x4

4x4

4x4

4x4

4x4

4x4

4x4

4x4

4x4

4x4

4x4

4x4

4x4

4x4

4x4

4x4

4x4

4x4

4x4

4x4

4x4

4x4

4x4

4x4

4x4

2'-0"

18'-6"

18'-6"

10'-11"

8'-0"

13'-2"

5'-4"

16'-6"

11'-1"

10'-0"

8'-0"

8'-0"

8'-0"

18'-6"

18'-6"

6'-1"

4'-6"

2'-2"

3'-1"

3'-1"

3'-1"

3'-1"

5'-3"

6'-8"

8'-0"

20'-0"

8'-1"

3'-1"

3'-1"

3'-1"

3'-1"

3'-1"

3'-1"

3'-1"

5'-10"

2'-0" TYP.

19'-0"

20'-0"

8'-1"

4'-8"

3'-0"

10'-8"

3'-0"

10'-8"

3'-0"

13'-2"

8'-0"

8'-0"

2'-6"

2'-6"

2'-8"

6'-0"

2'-8"

7'-4"

7'-8"

2060

4060

2060

FIXED

2060

050  
ESS

