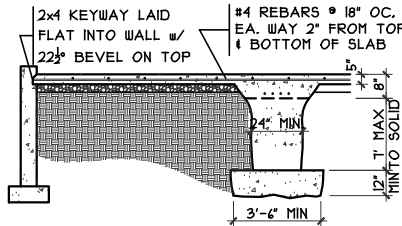
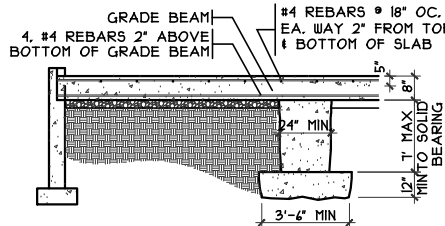


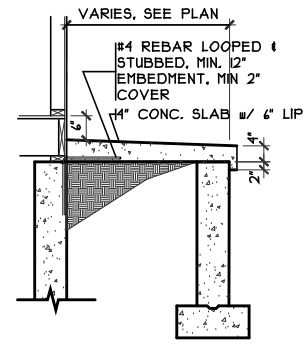
3 COLUMN DETAIL
 SCALE: 1/4" = 1'-0"



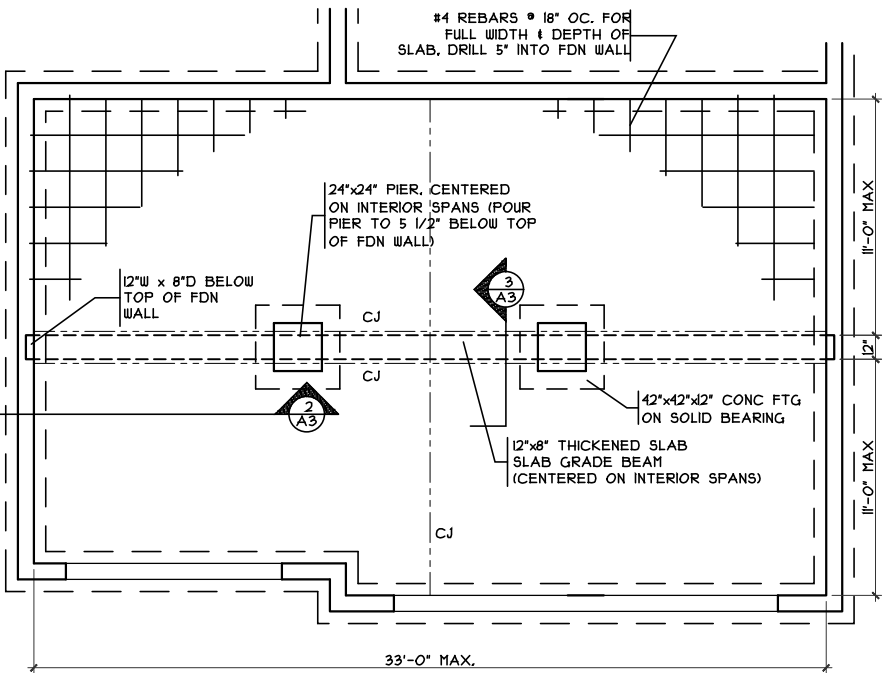
2 GRADE BM SECTION
 SCALE: 1/8" = 1'-0"



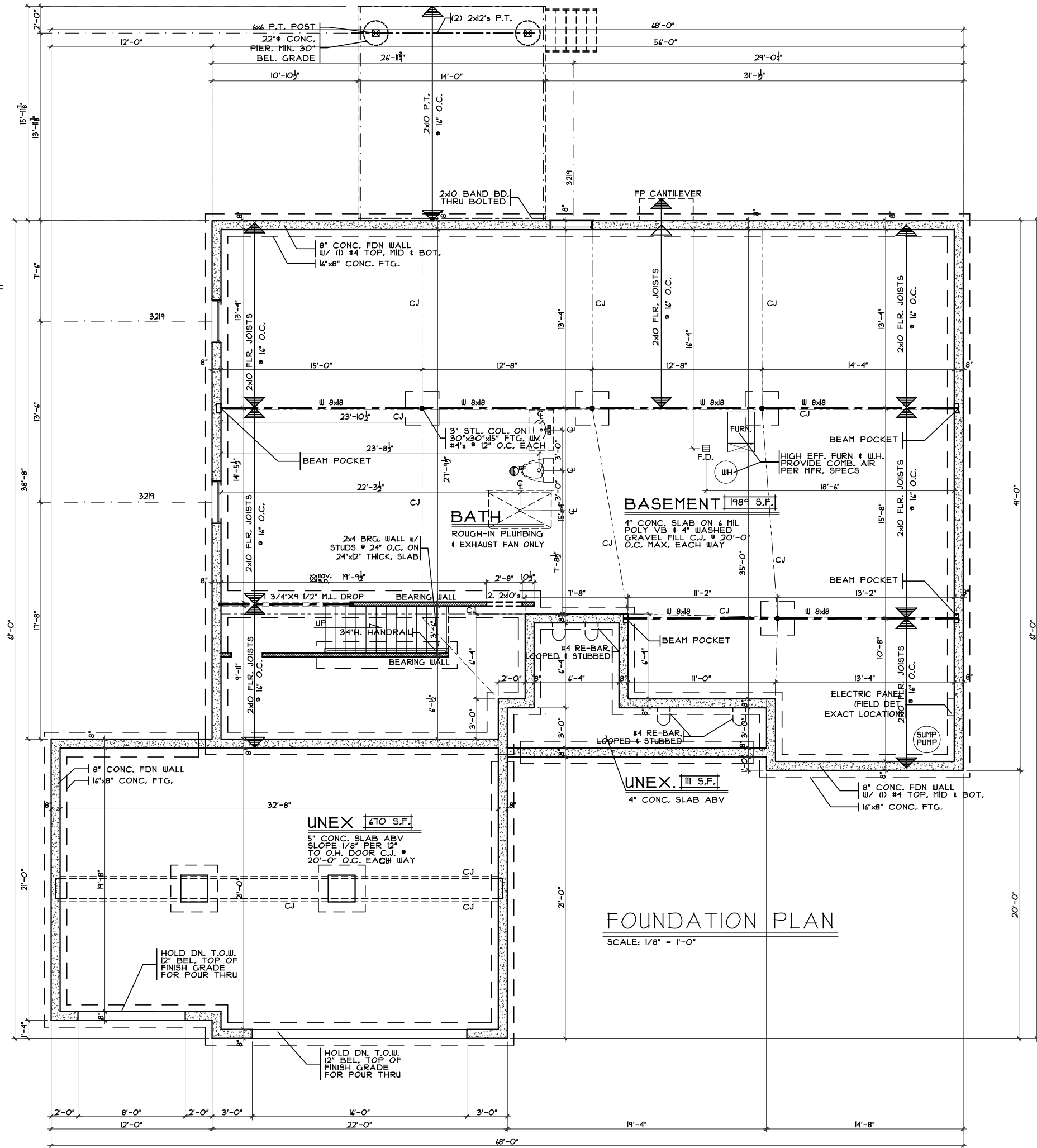
1 GRADE BM SECTION
 SCALE: 1/8" = 1'-0"



PORCH SLAB DETAIL
 SCALE: 1/4" = 1'-0"



GRADE BM DETAIL
 SCALE: 1/8" = 1'-0"



FOUNDATION PLAN
 SCALE: 1/8" = 1'-0"

Foundation Plan - Transitional

Plan : Milan
 Date : 7.20.2016
 Drawn: CKB
 Scale : As Noted
 Revised: 9.30.2016
 Sheet : 9 of 11

Milan - Transitional - Vinyl

Cristo Homes reserves all property rights in these plans. These plans are not to be reproduced, changed, or copied in any manner. They are not to be given to a third party, either in full or in part, without first receiving written permission from Cristo Homes. In the event these plans are used by a third party, Cristo Homes shall be held harmless.

Lebanon, OH
 Warren County

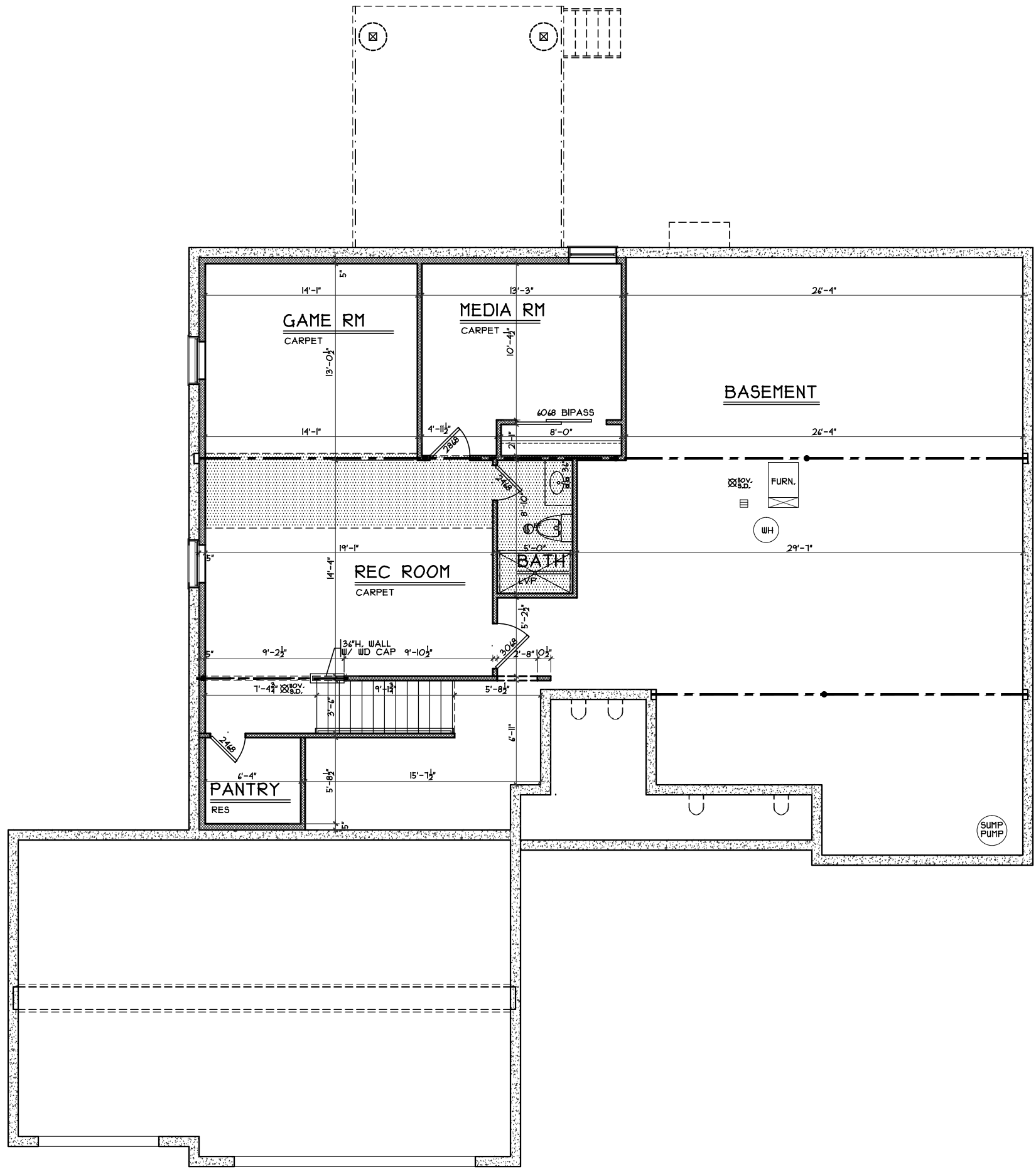
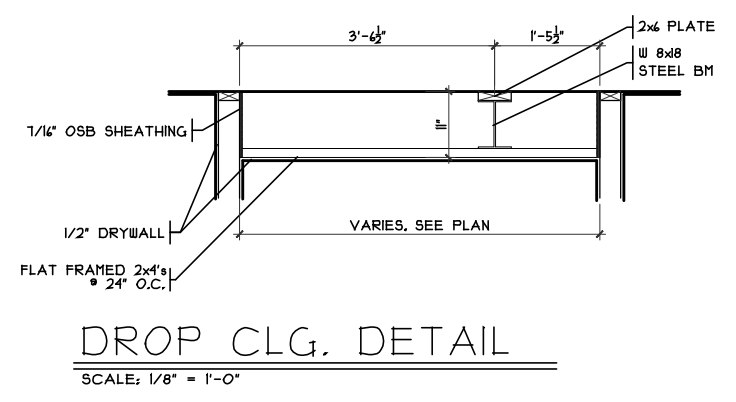
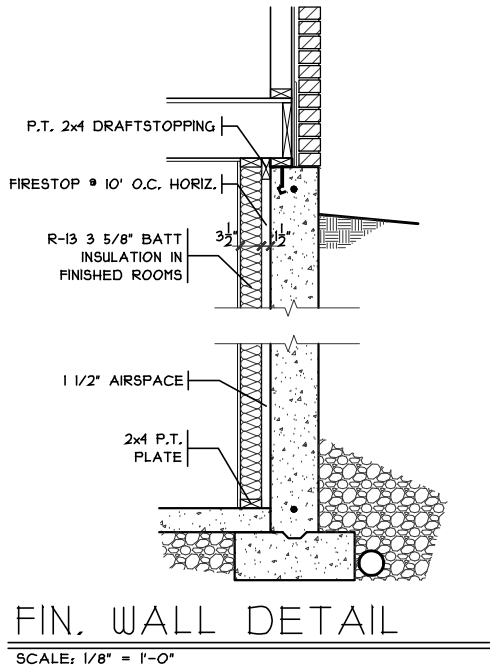
Proposed Residence:
 Victoria's Residence
 1512 Affirmed Ct.
 Keenceland Estates Lot#7952

KES1-7952

Issue Dates
 Change 8.3.2016
 Review 9.1.2016
 Change 9.7.2016
 Change 9.19.2016
 Correction 9.21.2016
 Change 9.30.2016

CRISTO HOMES
 7594-A Tyers Place Blvd.
 West Chester, OH 45669
 513.755.0570 www.cristohomes.com

A3



Foundation Plan - Transitional

Plan : Milan
 Date : 7.20.2016
 Drawn: CKB
 Scale : As Noted
 Revised: 9.30.2016
 Sheet : 9 of 11

KESI-7952
 Proposed Residence:
 Victoria's Residence
 1512 Affirmed Ct.
 Keeneland Estates Lot#7952

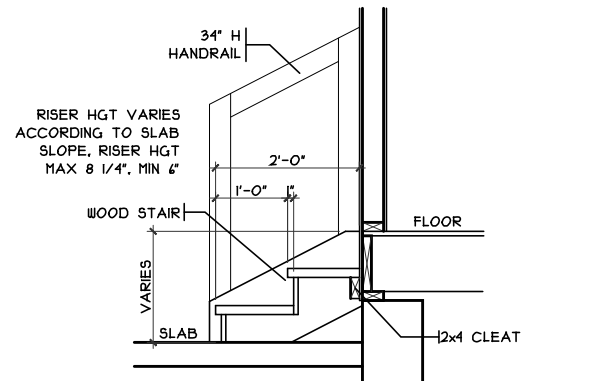
Milan - Transitional - Vinyl
 Cristo Homes reserves all property rights in these plans. These plans are not to be reproduced, changed, or copied in any manner. They are not to be given to a third party, either in full or in part, without first receiving written permission from Cristo Homes. In the event these plans are used by a third party, Cristo Homes shall be held harmless.

Lebanon, OH
 Warren County

Issue Dates
 Change 8.3.2016
 Review 9.1.2016
 Change 9.7.2016
 Correction 9.19.2016
 Change 9.21.2016

CRISTO HOMES
 7594-A Tyers Place Blvd.
 West Chester, OH 45069
 513.755.0570 www.cristohomes.com

A3a

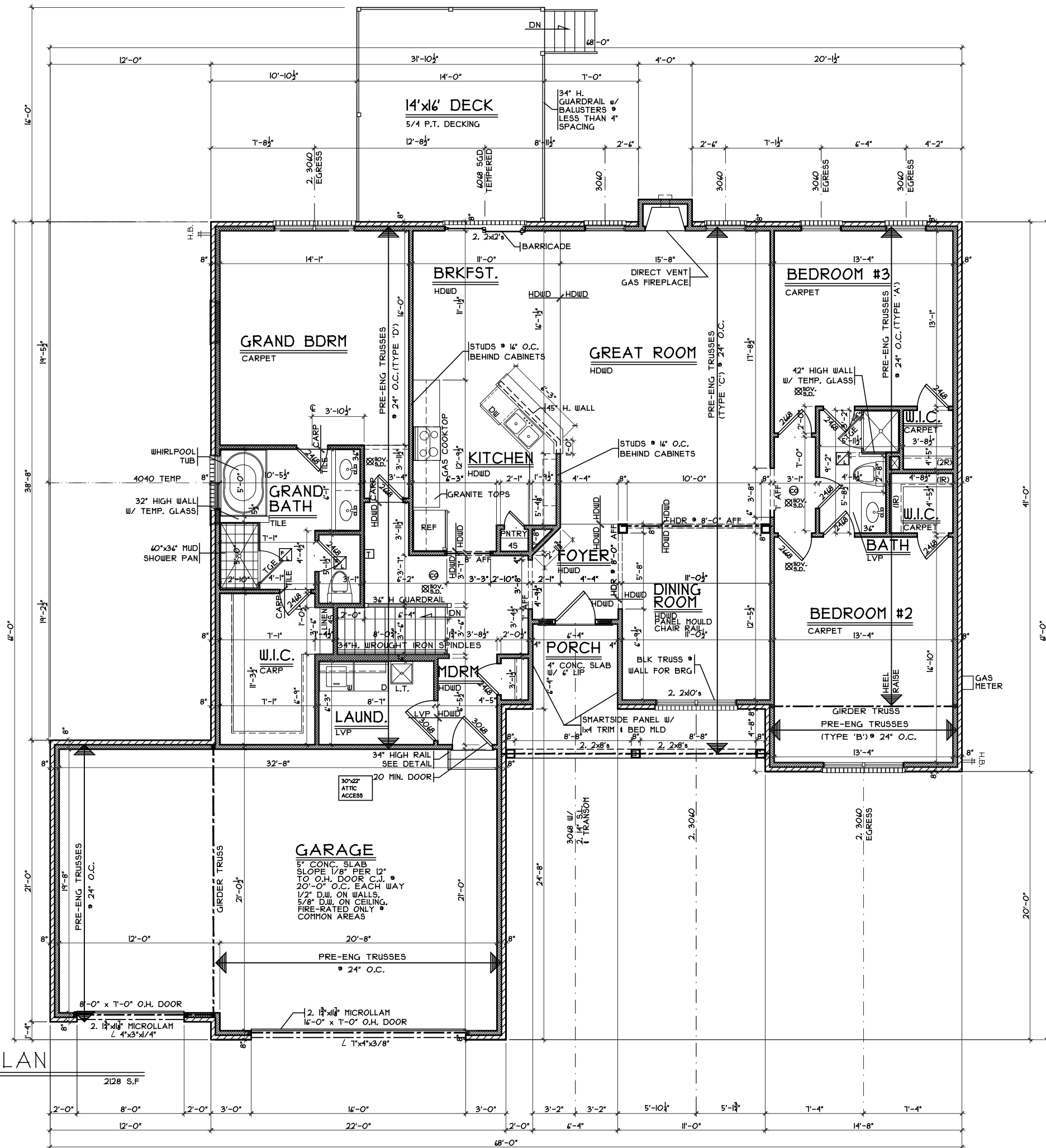


GARAGE HANDRAIL DETAIL

SCALE: 3/8" = 1'-0"

FIRST FLOOR PLAN

SCALE: 1/8" = 1'-0"



2128 S.F.

First Floor Plan - Transitional

Plan : Milan
 Date : 7.20.2016
 Drawn: CKB
 Scale : As Noted
 Revised: 9.30.2016
 Sheet : 11 of 11

KES1-7952

Proposed Residence:
 Victoria's Residence
 1512 Affirmed Ct.
 Keencland Estates Lot#7952

Milan - Transitional - Vinyl

Cristo Homes reserves all property rights in these plans. These plans are not to be reproduced, changed, or copied in any manner. They are not to be given to a third party, either in full or in part, without first receiving written permission from Cristo Homes. In the event these plans are used by a third party, Cristo Homes shall be held harmless.

Change	Issue Dates
8.3.2016	
Review	9.1.2016
Change	9.7.2016
Change	9.19.2016
Correction	9.21.2016
Change	9.30.2016

Lebanon, OH
 Warren County



7594-A Tylers Place Blvd.
 West Chester, OH 45669
 513.755.0570 www.cristohomes.com

A4