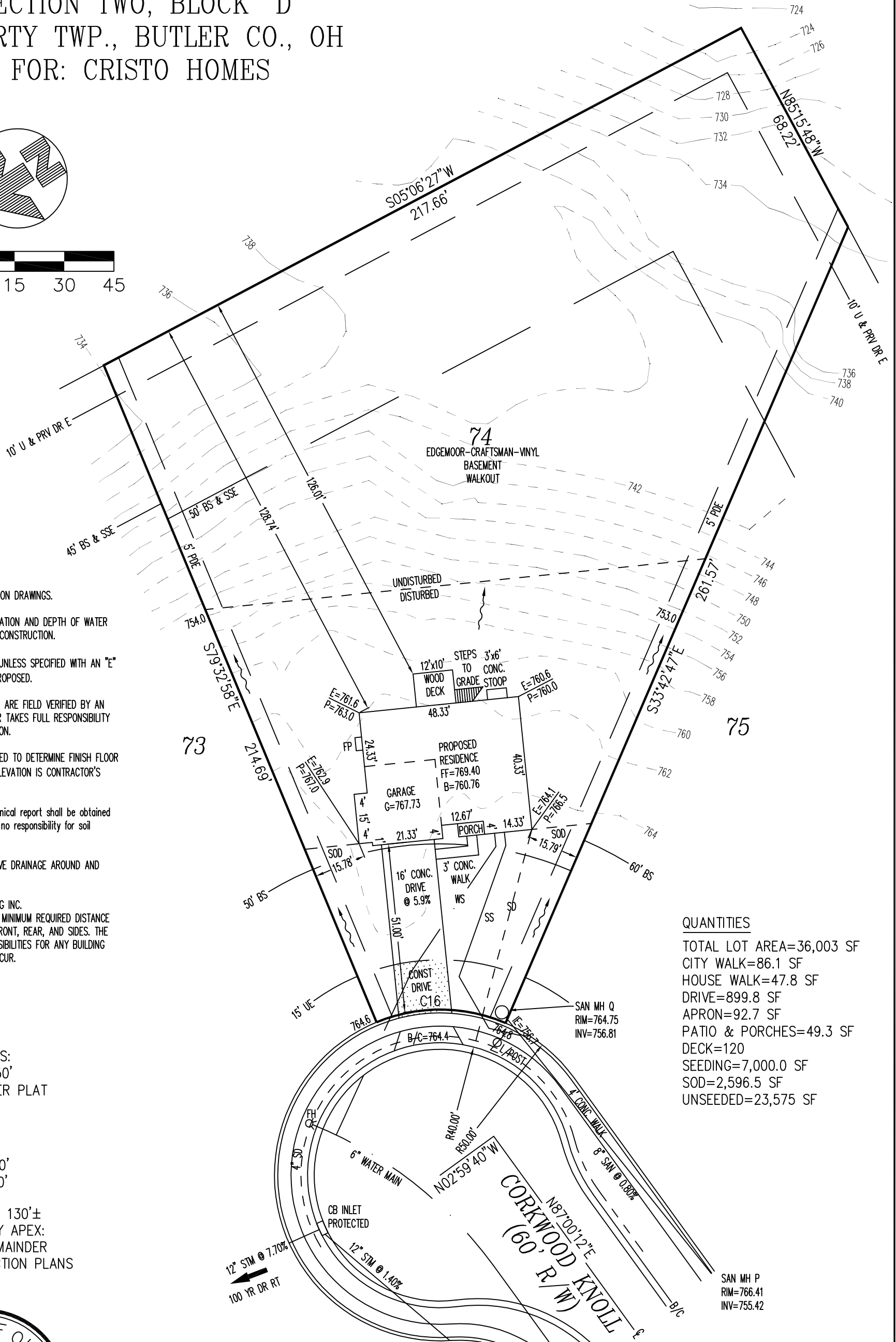
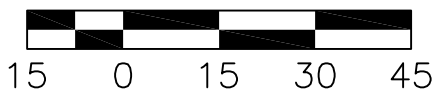
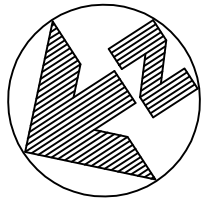


# PLOT PLAN

LOT 74 (36,003 SF) 0.827AC.  
THE KNOLLS OF LIBERTY ESTATES  
SECTION TWO, BLOCK "D"  
LIBERTY TWP., BUTLER CO., OH  
FOR: CRISTO HOMES



### INFORMATION FROM CONSTRUCTION DRAWINGS.

CONTRACTOR IS TO VERIFY LOCATION AND DEPTH OF WATER AND UTILITY SERVICES BEFORE CONSTRUCTION.

ALL ELEVATIONS ARE EXISTING UNLESS SPECIFIED WITH AN "E" FOR EXISTING OR A "P" FOR PROPOSED.

UNLESS F.F.E., M.O.E. OR M.B.E. ARE FIELD VERIFIED BY AN ENGINEERING FIRM, CONTRACTOR TAKES FULL RESPONSIBILITY FOR THE FINISH FLOOR ELEVATION.

A STANDARD FORMULA WAS USED TO DETERMINE FINISH FLOOR GRADE. FINAL FINISH FLOOR ELEVATION IS CONTRACTOR'S RESPONSIBILITY.

Prior to construction, a geotechnical report shall be obtained by the builder. Apex assumes no responsibility for soil conditions.

BUILDER SHALL PROVIDE POSITIVE DRAINAGE AROUND AND AWAY FROM HOUSES.

APEX ENGINEERING & SURVEYING INC. ADVISES AGAINST HOLDING THE MINIMUM REQUIRED DISTANCE ON ANY AND ALL SETBACKS, FRONT, REAR, AND SIDES. THE BUILDER ASSUMES ALL RESPONSIBILITIES FOR ANY BUILDING ENCROACHMENTS THAT MAY OCCUR.

SETBACKS:  
FRONT=50'  
REAR=PER PLAT  
SIDE=15'

C16  
R=50.00'  
L=40.00'

TOPOGRAPHY TO 130'±  
BEHIND CURB BY APEX:  
JUNE, 2016; REMAINDER  
FROM CONSTRUCTION PLANS

### QUANTITIES

TOTAL LOT AREA=36,003 SF  
CITY WALK=86.1 SF  
HOUSE WALK=47.8 SF  
DRIVE=899.8 SF  
APRON=92.7 SF  
PATIO & PORCHES=49.3 SF  
DECK=120  
SEEDING=7,000.0 SF  
SOD=2,596.5 SF  
UNSEEDED=23,575 SF

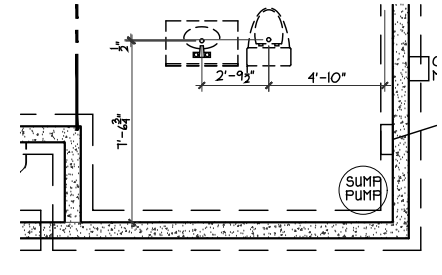
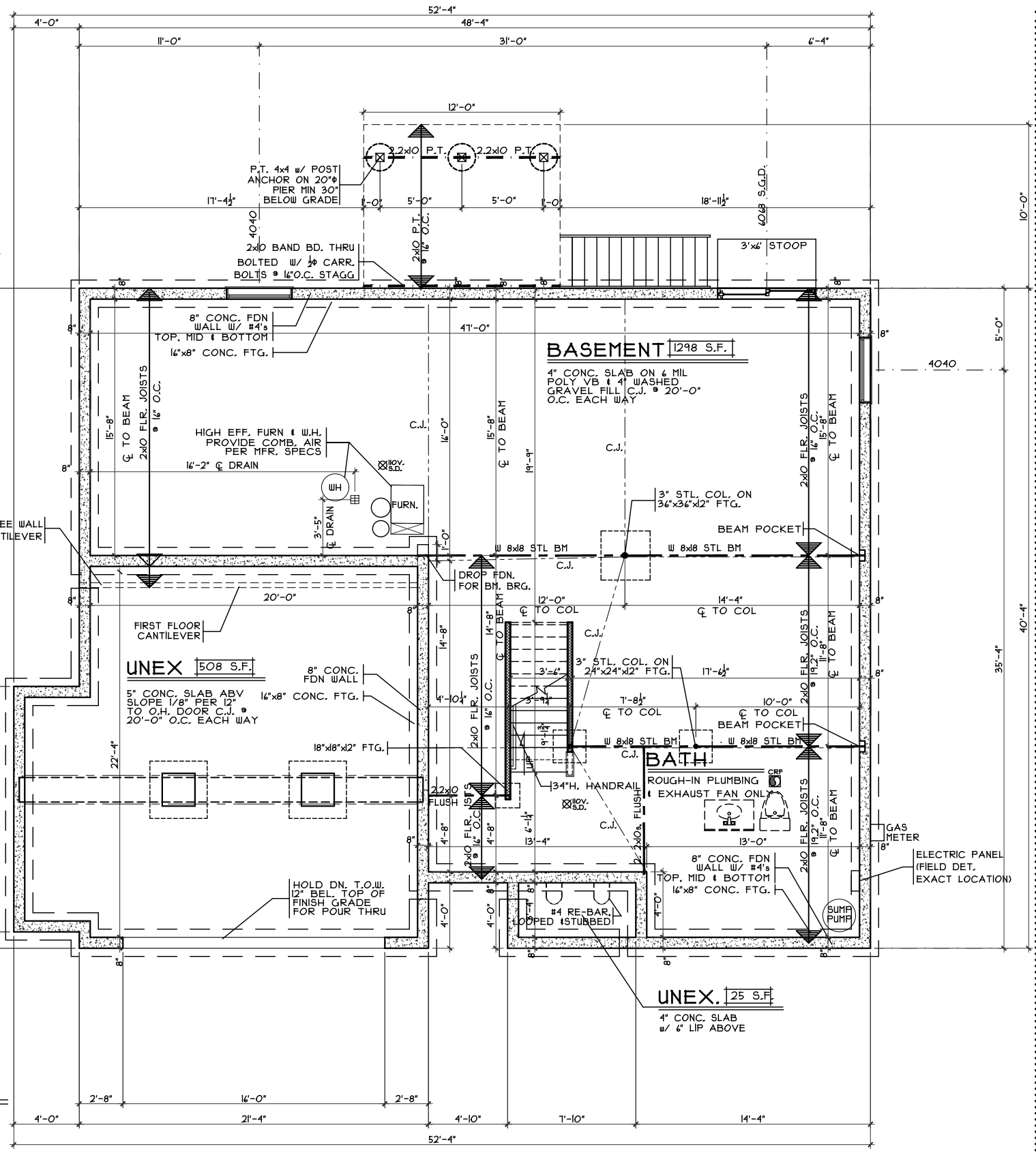
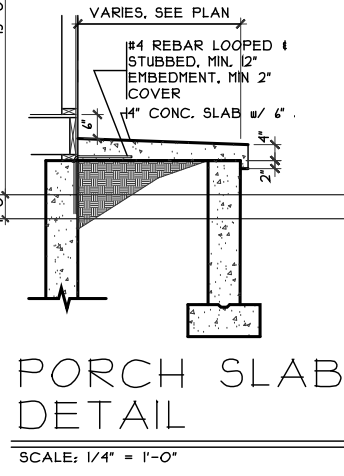
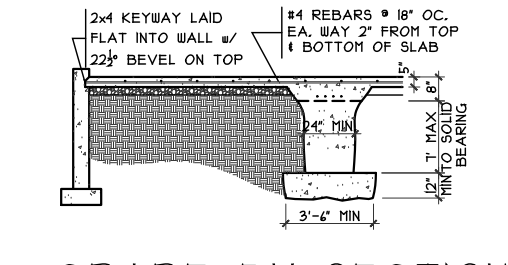
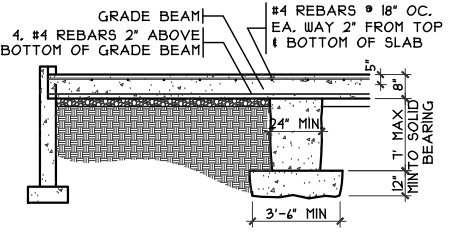
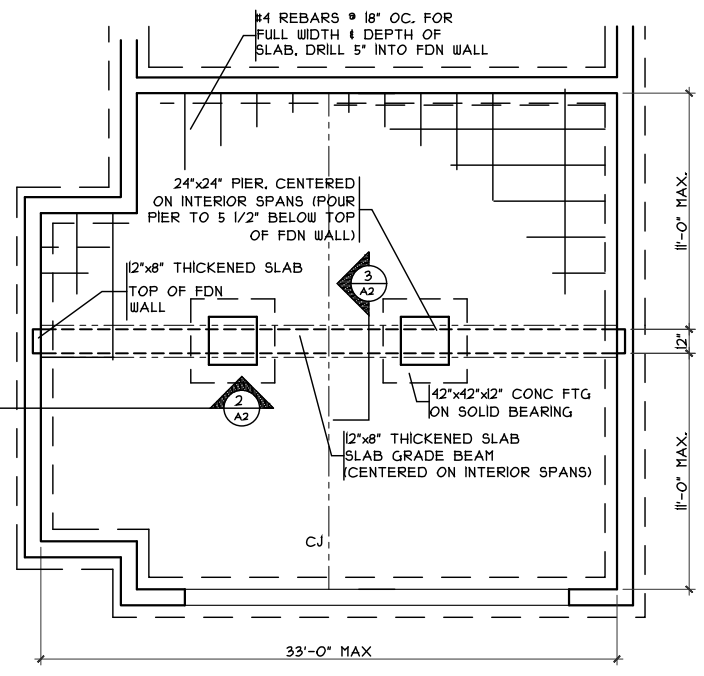
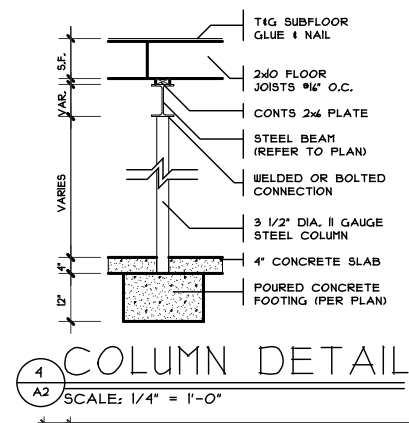
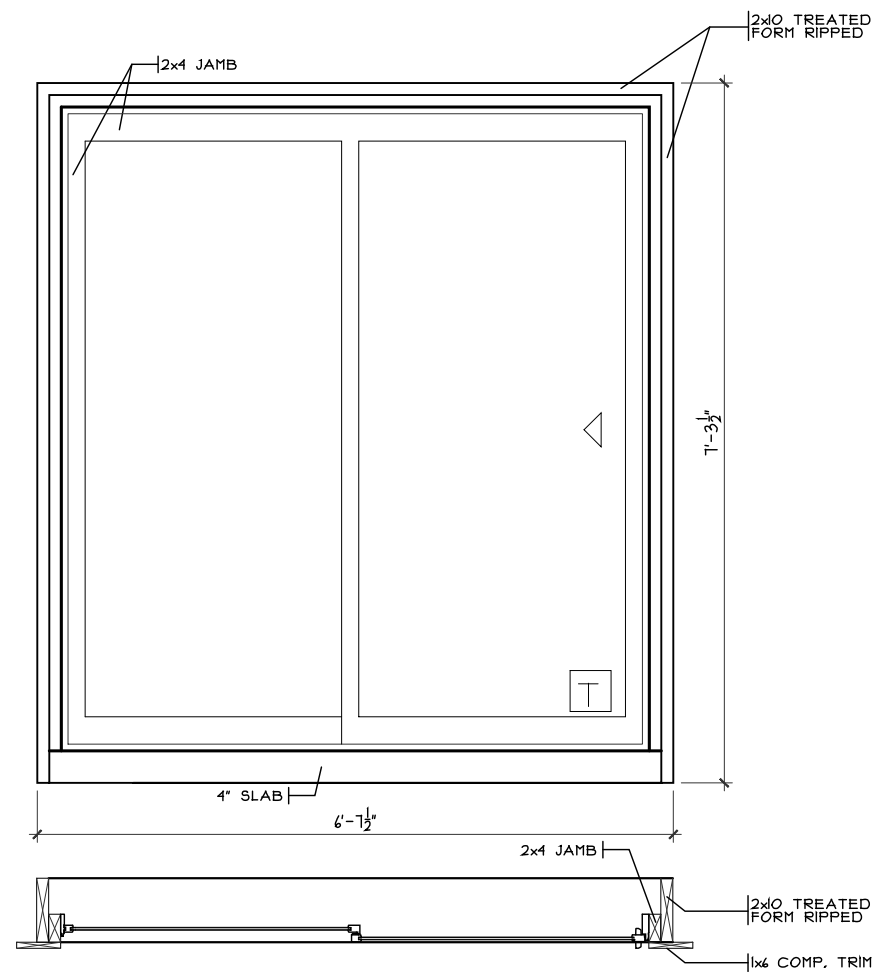


SCALE: 1"=30'  
DATE: 06/09/2017  
DRAWN: JLS  
DESIGNED:  
CHECKED: KRC

**APEX**  
ENGINEERING & SURVEYING, INC.  
1068 N. UNIVERSITY BLVD MIDDLETOWN, OHIO 45042  
PH.-(513) 424-5202 OR (513) 932-8991 FAX - (513) 424-6202

REVISIONS:  
1.06/12/17 MOVED HOME-JLS  
2.06/16/17 CHANGED GARAGE-JLS  
3.  
4.

PROJECT: KNOLLS OF LIBERTY SHEET  
DRAWING: 170953PC 1 OF 1



**Foundation Plan - Craftsman**  
 Plan : Edgemoor  
 Date : 4/13/17  
 Drawn: GKB  
 Scale : As Noted  
 Revised: 7/18/17  
 Sheet : 7 of 21

**Proposed Residence:**  
 Market Home  
 7025 Corkwood Knoll  
 Knolls of Liberty Lot 74

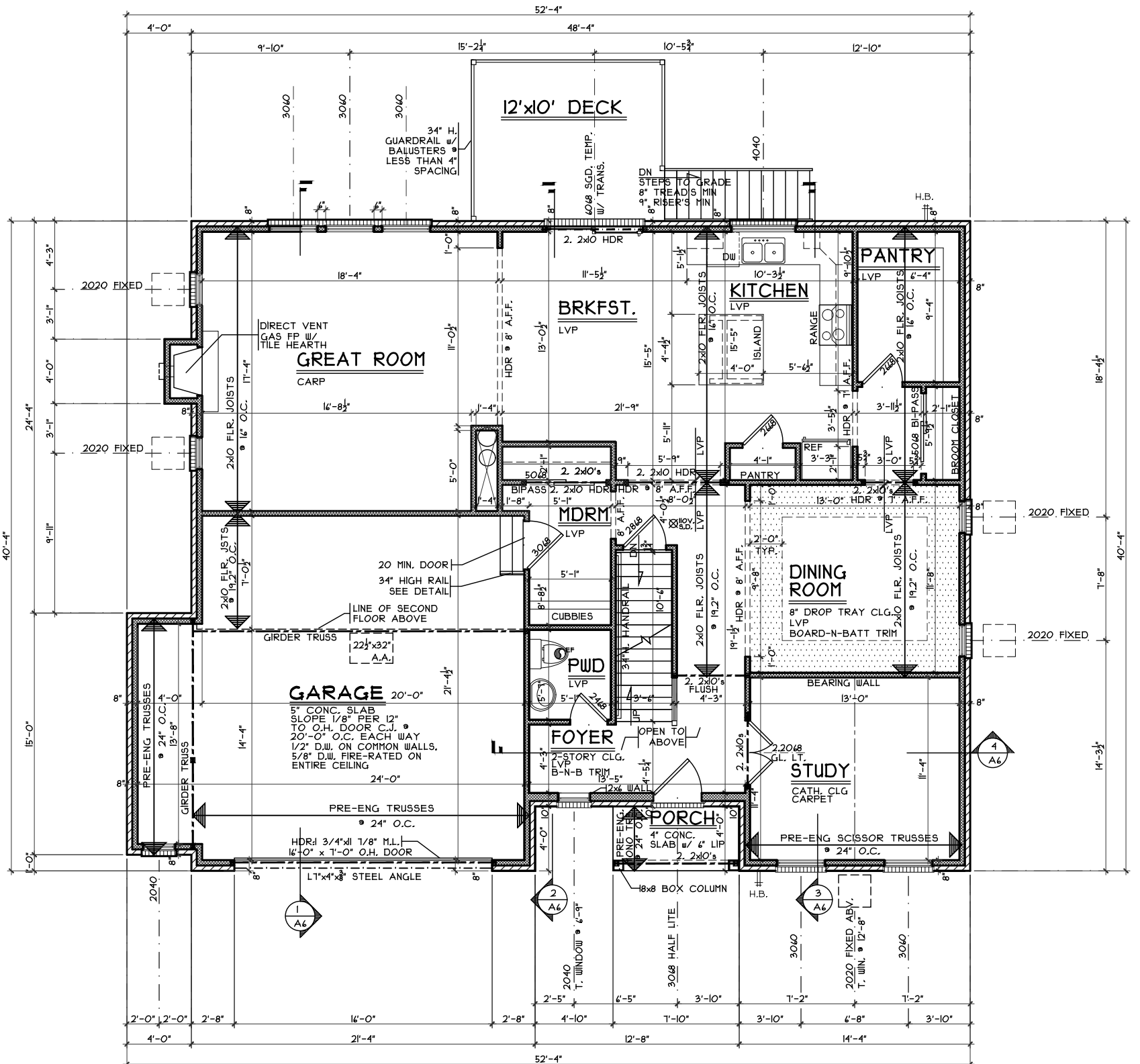
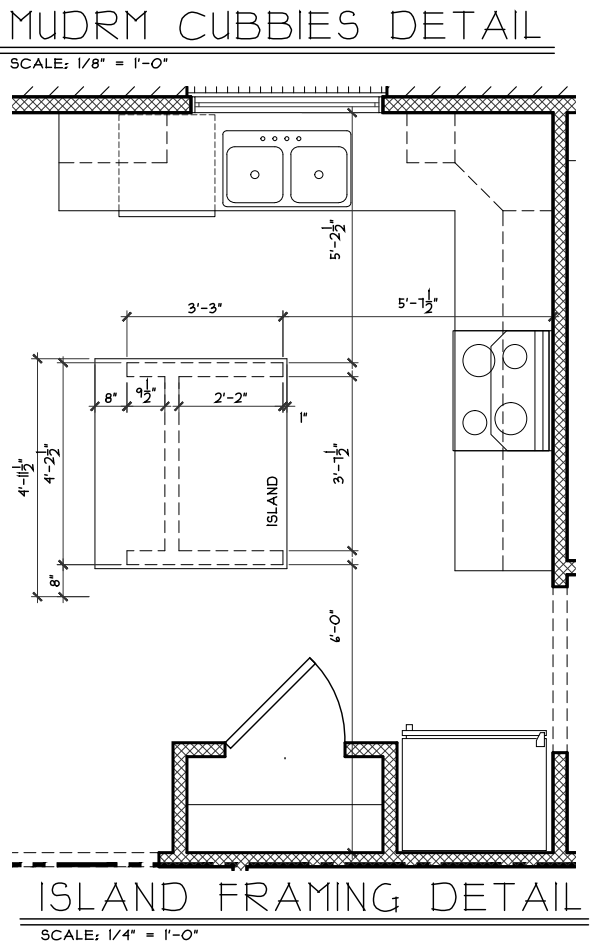
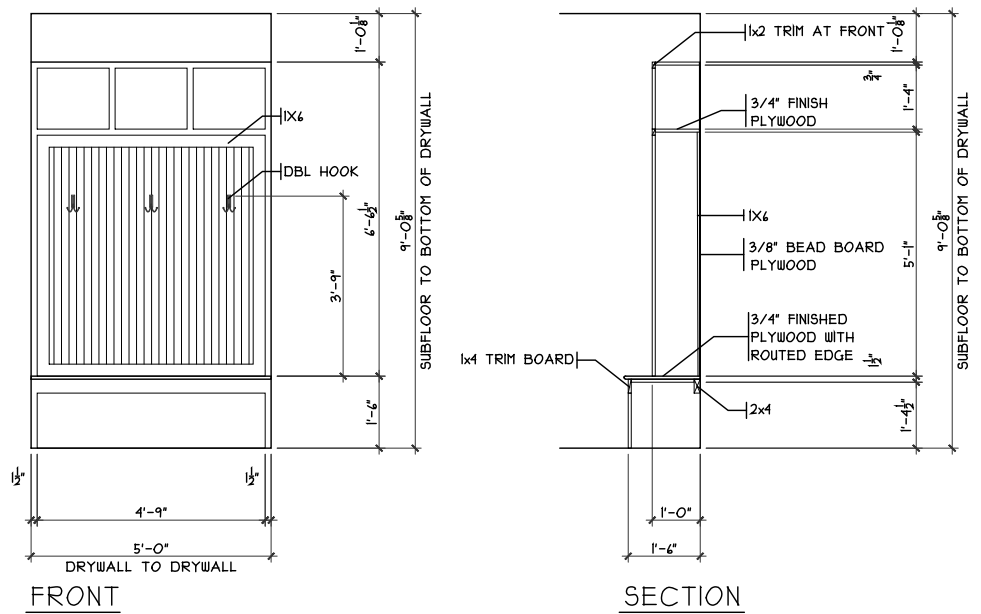
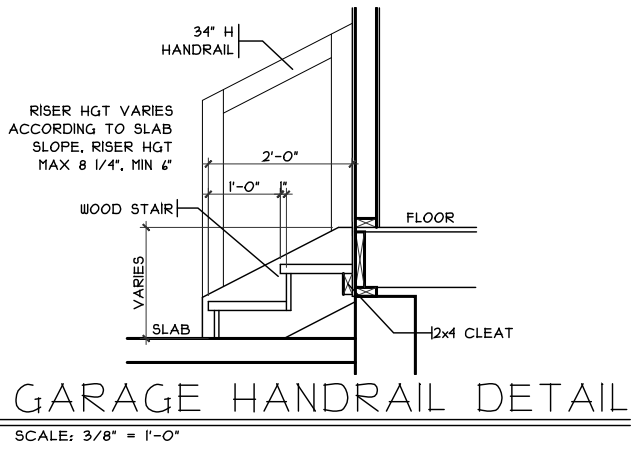
**Issue Dates**

Review #1	4/26/17
Revisions	5/4/17
Change	5/8/17
Change	6/7/17
Revisions	7/18/17

Cristo Homes reserves all property rights in these plans. These plans are not to be reproduced, changed, or copied in any manner. They are not to be given to a third party, either in full or in part, without first receiving written permission from Cristo Homes. In the event these plans are used by a third party, Cristo Homes shall be held harmless.

**CRISTO HOMES**  
 7594-A Tylers Place Blvd.  
 West Chester, OH 45389  
 513.755.0570 www.cristohomes.com

Liberty Twp.  
Butler County



**First Floor Plan - Craftsman**  
 Plan : Edgemoor  
 Date : 4/13/17  
 Drawn: GKB  
 Scale : As Noted  
 Revised: 7/18/17  
 Sheet : 9 of 21

**Proposed Residence:**  
 Market Home  
 7025 Corkwood Knoll  
 Knolls of Liberty Lot 74

**Edgemoor - Craftsman - Vinyl**  
 Issue Dates:  
 Review #1 4/26/17  
 Revisions 5/4/17  
 Change 5/8/17  
 Change 6/7/17  
 Revisions 7/18/17

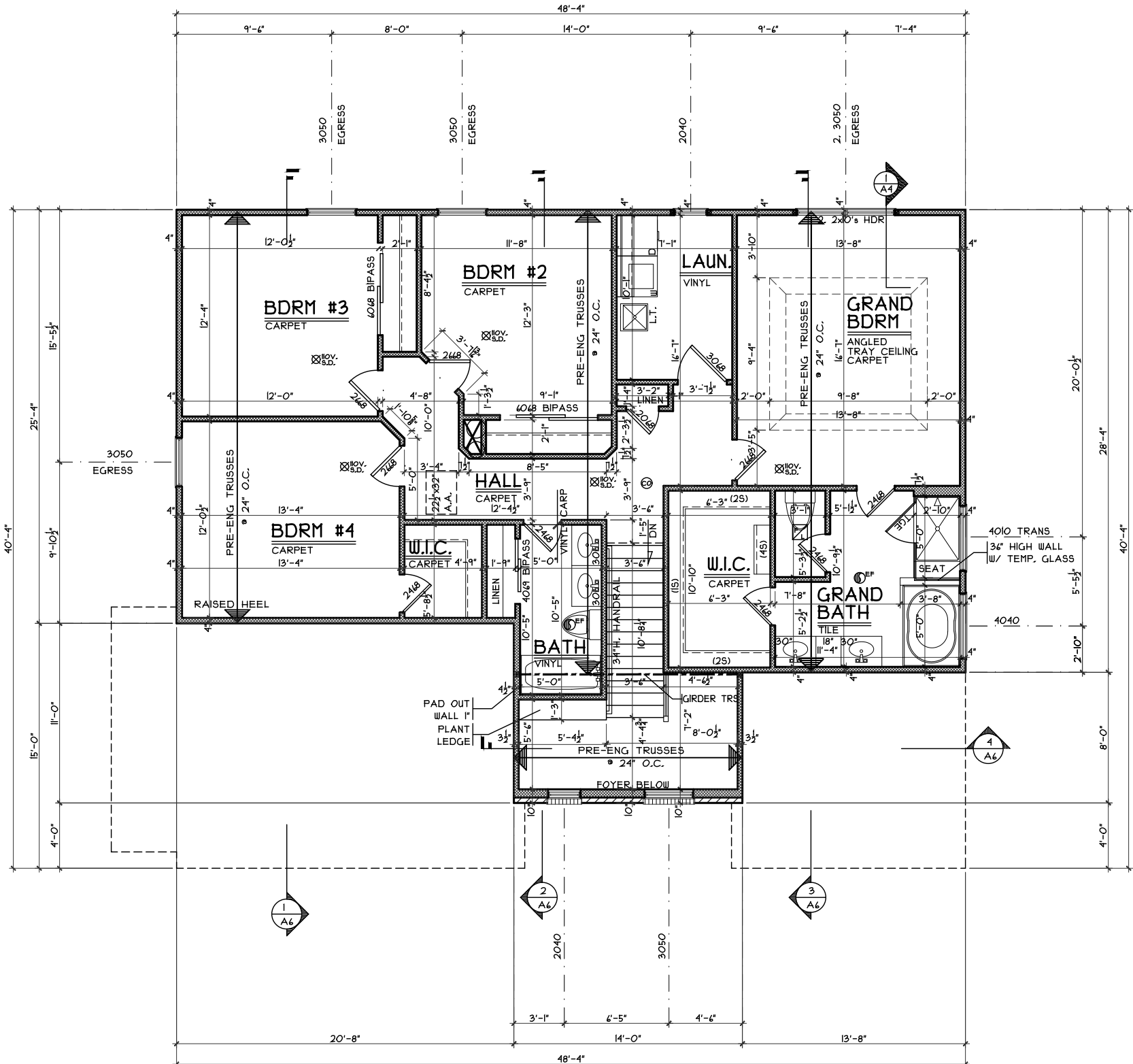
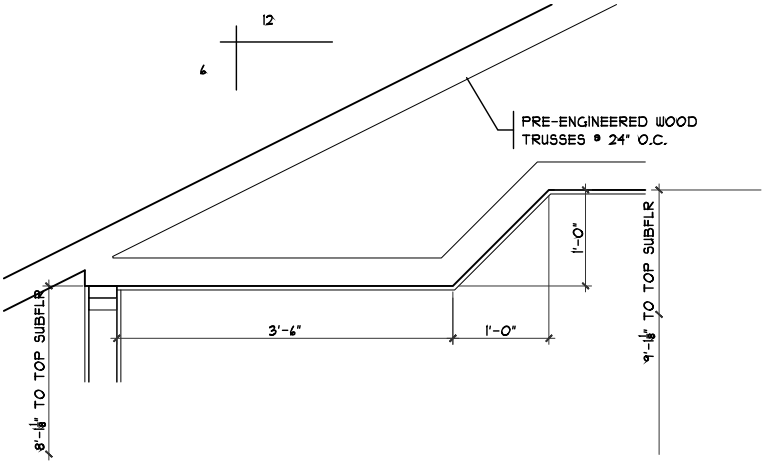
Cristo Homes reserves all property rights in these plans. These plans are not to be reproduced, changed, or copied in any manner. They are not to be given to a third party, either in full or in part, without first receiving written permission from Cristo Homes. In the event these plans are used by a third party, Cristo Homes shall be held harmless.

Liberty Twp.  
 Butler County



### ANGLED TRAY @ MBR

SCALE: 1/4" = 1'-0"



## SECOND FLOOR PLAN

SCALE: 1/8" = 1'-0" 1289 S.F.

Second Floor Plan - Craftsman

Plan : Edgemoor  
 Date : 4/13/17  
 Drawn: GKB  
 Scale : As Noted  
 Revised: 7/18/17  
 Sheet : 11 of 21

Proposed Residence:  
 Market Home  
 7025 Corkwood Knoll  
 Knolls of Liberty Lot 74

KI-74

Liberty Twp.  
 Butler County

Edgemoor - Craftsman - Vinyl

Cristo Homes reserves all property rights in these plans. These plans are not to be reproduced, changed, or copied in any manner. They are not to be given to a third party, either in full or in part, without first receiving written permission from Cristo Homes. In the event these plans are used by a third party, Cristo Homes shall be held harmless.

Issue Dates

Review #1	4/26/17
Revisions	5/4/17
Change	5/8/17
Change	6/7/17
Revisions	7/18/17



7594-A Tylers Place Blvd.  
 West Chester, OH 45389  
 513.755.0570 www.cristohomes.com

# A4