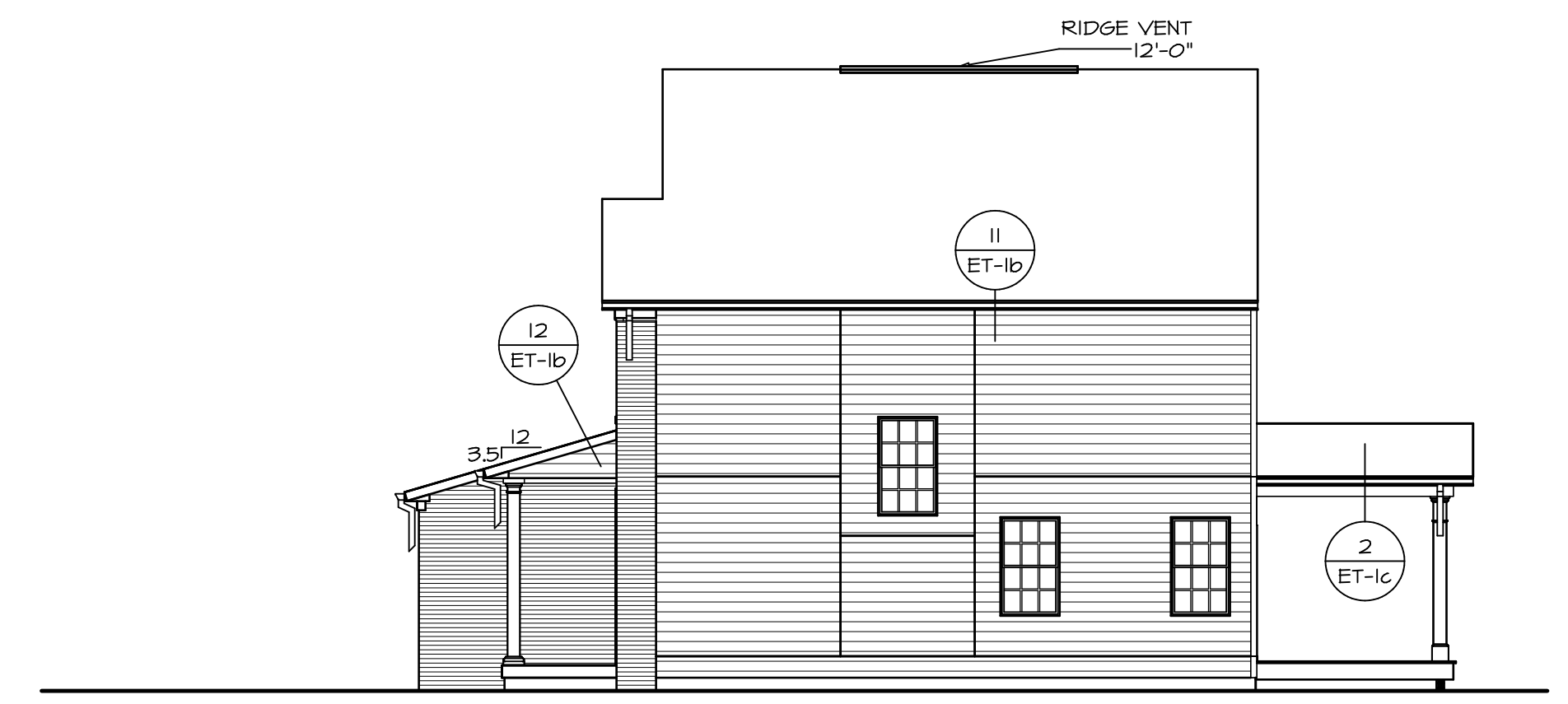


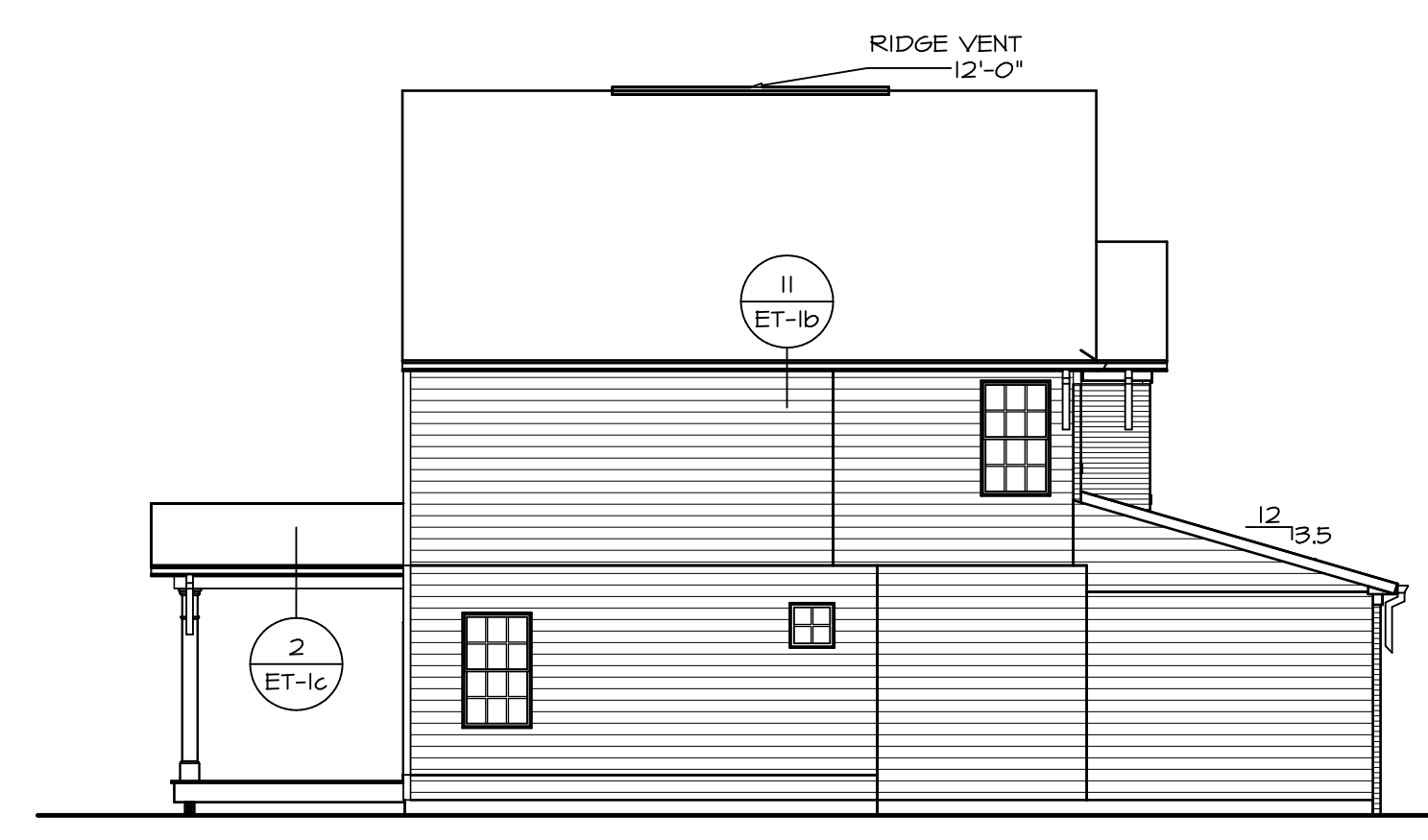
1 FRONT ELEVATION "A"  
 A-1 SCALE: 1/4" = 1'-0"



2 RIGHT ELEVATION  
 A-1 SCALE: 1/8" = 1'-0"



3 REAR ELEVATION  
 A-1 SCALE: 1/8" = 1'-0"



4 LEFT ELEVATION  
 A-1 SCALE: 1/8" = 1'-0"

SHEET NO. <b>A-1</b>	MODEL <b>ALLEGHENY</b>	DRAWING TITLE <b>ELEVATIONS</b>	OPTION DESCRIPTION <b>FULL BASEMENT FOUNDATION</b>	SET NO. <b>ALGOO 01</b>	VERSION <b>01</b>	DRAWN BY <b>KDH</b>	DATE: <b>8/4/17</b>	OPTION <b>FBA</b>
				REMARKS		REV. NO.	DATE	
				NVR, Inc., owner, expressly reserves its copyright in these plans. These plans are not to be reproduced, changed, copied, or otherwise used without the written consent of NVR, Inc.				
				<b>NVR</b> NVR, Inc. Architectural Services Architects & Planners 5285 Washington Blvd., Suite 100 Frederick, MD 21703				
				C:\NVR\Solves\ALLEGHENY_ALGOO_01\DCY-IP-0144\94628\Sheets\Lot_Specific\5 A-1 ELEV.LS (FBA).dwg 05/17/18 = 3.03 .gm				

FOUNDATION BEAM/HEADER SCHEDULE					
IDENTIFIER	DESCRIPTION	LENGTH	OPTIONS	ENG. NUM.	REMARKS
BO01	BEAM STEEL - #8X24	14'-4 3/4"		BO020	
BO02	BEAM STEEL - #8X24	14'-4 3/4"		BO022	
BO03	BEAM BUILT 2X12 - 3 PLY	14'-0"		BO013	

PAD FOOTING SCHEDULE					
IDENTIFIER	LENGTH	WIDTH	HEIGHT	OPTIONS	ENG. NUM.
FO05	14'-4 3/4"	1'-6"	1'-4"	FGN	
FO06	14'-4 3/4"	1'-6"	1'-4"	FGN	

**FOUNDATION NOTES - BASEMENT**

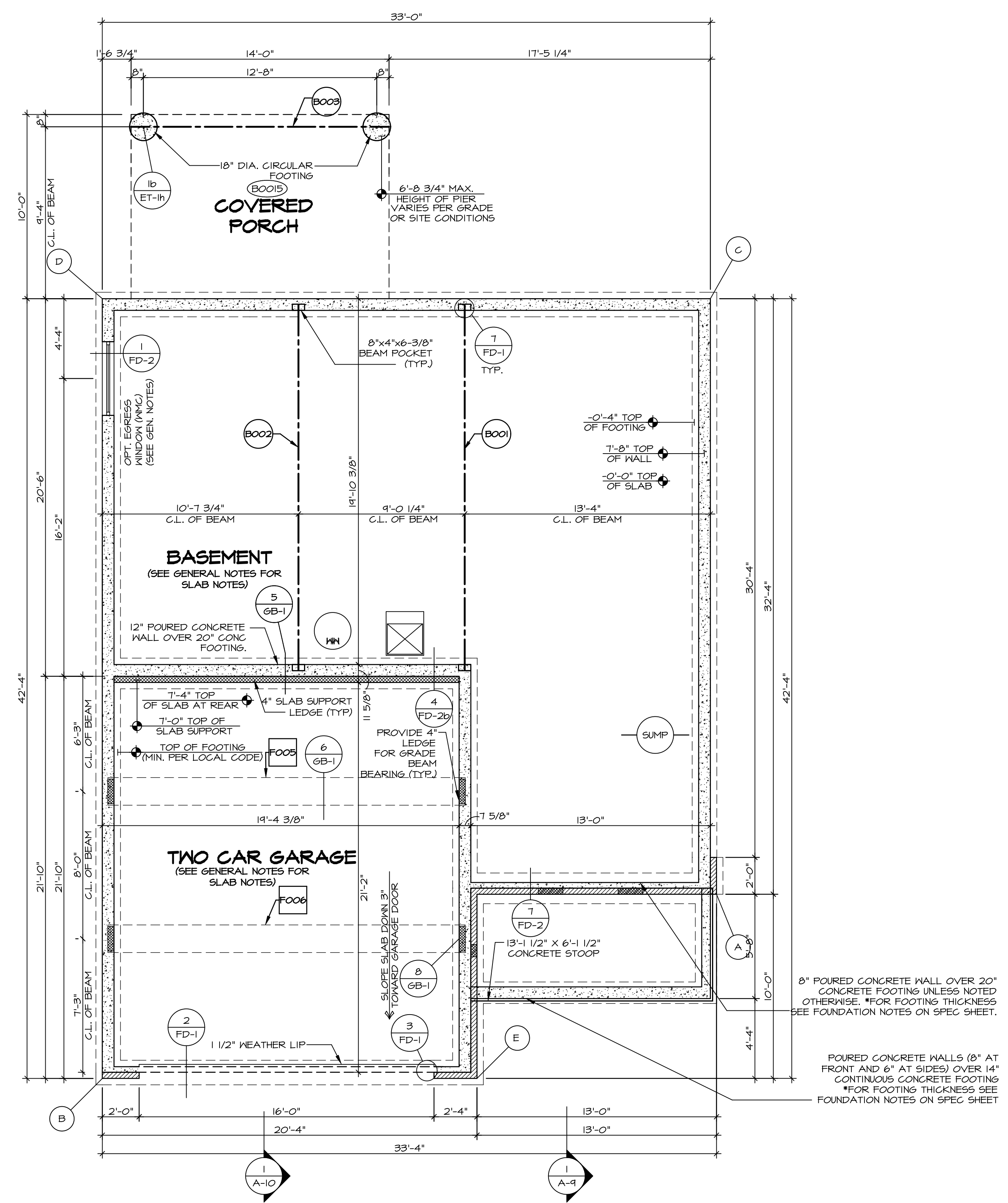
- FOUNDATION UNDER HABITABLE SPACE:
  - CONCRETE SLAB ON 6 MIL VAPOR BARRIER OVER SUB-BASE (SEE SPEC SHEET FOR SLAB NOTES)
- SLAB UNDER GARAGE:
  - UNEXCAVATED WITH CONCRETE SLAB ON VAPOR BARRIER OVER SUB-BASE (SEE SPEC SHEET FOR SLAB NOTES)
- SEE SHEET (A-4) FOR FOUNDATION CONNECTION INFORMATION.
- OPTIONAL EGRESS WINDOW - LOCATION MAY VARY DUE TO GRADE OR OPTIONS ABOVE WINDOW WELL REQUIRED W/ CERTAIN GRADE CONDITIONS (SEE SPEC SHEET FOR ADDITIONAL INFO.)
- SLAB LEDGE LOCATIONS VARY W/ GRADE BEAM(S) ORIENTATION. SEE GB-1 FOR DETAILS.

FOUNDATION DIAGONALS			
	A		B
A	0"	A	34'-4 5/8"
B	34'-4 5/8"	B	0"
C	32'-4"	C	53'-8 1/8"
D	46'-5 1/4"	D	42'-4"
E	16'-4 13/16"	E	20'-4"

**LEGEND**

- BEARING WALL
- NON BEARING WALL
- INDICATES BEARING FROM POINT-LOAD ABOVE
- JACKS
- BEAMHEADER
- PAD FOOTING
- STEEL COLUMN
- PORTAL FRAME
- JOIST/TRUSS
- LVL
- ENGINEERING PAGE NUMBER

SEE FC DETAILS FOR FRAMING CONNECTORS



**FOUNDATION PLAN**  
 SCALE: 1/4" = 1'-0"

**REVISIONS**

REV. NO.	DATE	REMARKS

REV. NO. DATE REMARKS

Model: ALLEGHENY  
 Drawing Title: FOUNDATION PLAN  
 Option: DESCRIPTION

SHEET NO. **A-3**

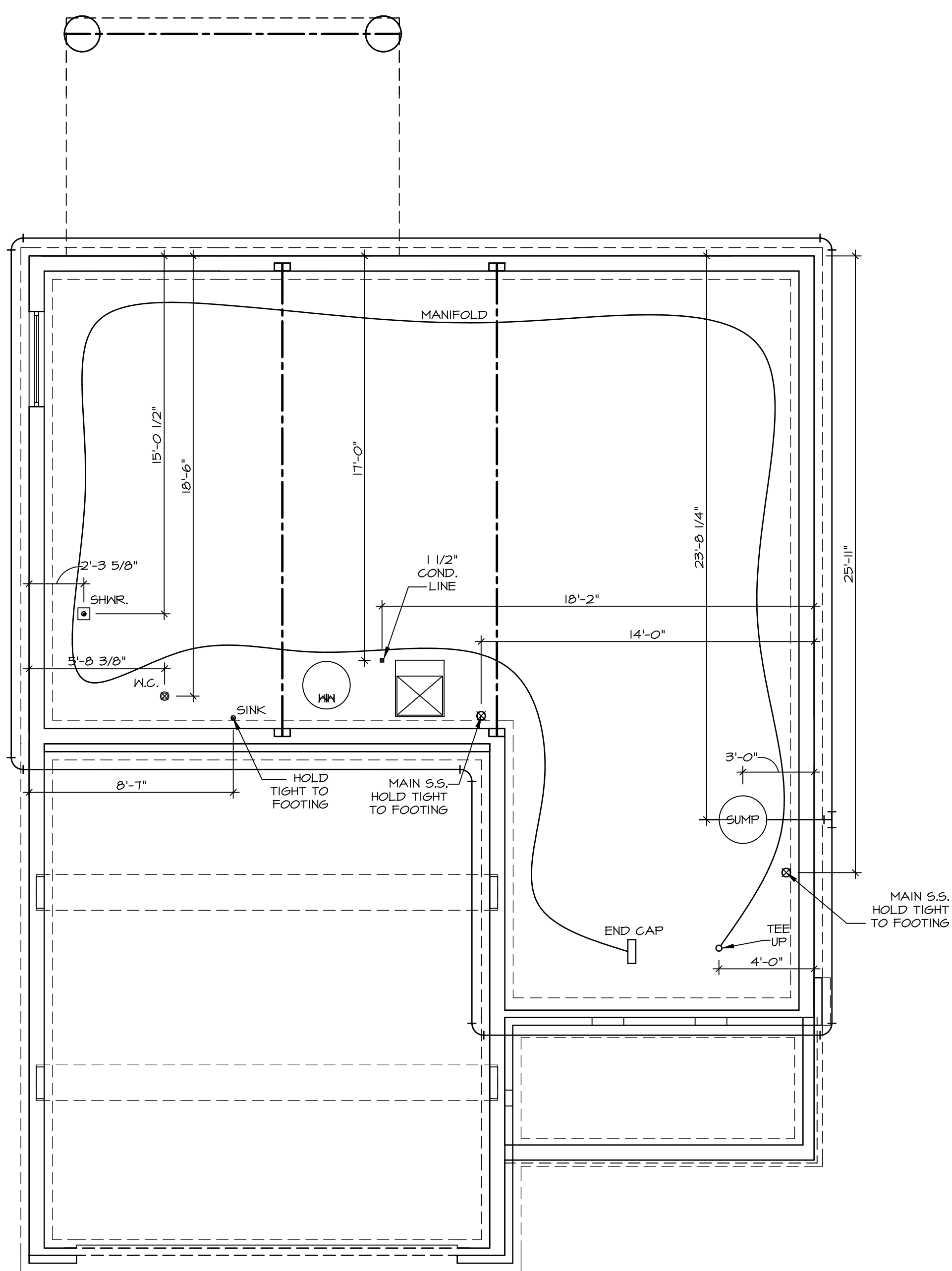
12

SET NO. ALGOO  
 VERSION 01  
 DRAWN BY TN  
 DATE: 08/04/2017  
 OPTION

NVR, Inc., owner, expressly reserves its common law copyright and other property rights in these plans. These plans are not to be copied, reproduced, or transmitted in any form or by any means, electronic or mechanical, including photocopying, recording, or by any information storage and retrieval system, without the prior written consent of NVR, Inc.

**NVR**  
 NVR, Inc.  
 Architectural Services  
 Architects  
 Suite 100  
 5285 Westover Hills  
 Frederick, MD 21703

C:\NVR\Solves\ALLEGHENY\_ALGOO\_01\DCI-IP-0144\94625 Sheets\Lot\_Specific\12\_A-3\_FDN\_LS\_(FBA).dwg 05/17/18 - 3:03 am



**PLUMBING PLAN**  
SCALE: 1/4" = 1'-0"

**NOTE**  
 RADON REMEDIATION  
 RADON LOOP:  
 - (4") PERFORATED HDPE "LOOP"  
 - MUST BE PLACED IN STONE BED SLIGHTLY HIGHER THAN ANY INTERIOR DRAINTILE  
 - LOOP TO BE SEPARATE FROM ANY DRAINTILE ELEMENTS  
 - TO BE CORRUGATED HDPE PIPE  
 - SCREENS TO BE INSTALLED THROUGH LOOP AT TEE UP INTO STACK  
**STACK REQUIREMENTS:**  
 - 3" PVC STACK (4" IF BASEMENT IS GREATER THAN 2200 SQFT.)  
 - NO PART OF STACK IS TO BE HORIZONTAL  
 - PIPE TO BE PHYSICALLY LABELED IN THE FIELD AS "RADON VENT" OR OTHER JURISDICTIONALLY REQUIRED LANGUAGE (ON EVERY LEVEL OF HOUSE)  
 - ROOF TERMINATION TO BE IN TOP 1/3 OF ROOF  
 - SCREEN INSTALLED TO KEEP PESTS OUT OF RADON VENT AT ROOF TERMINATION

SHEET NO.	A-5	22
MODEL	ALLEGHENY	
SET NO.	ALG00	
VERSION	01	
DRAWN BY	TN	
DATE	08/04/2017	
OPTION		

**NVR**  
 NVR, Inc.  
 Architects  
 5285 Westpark Drive  
 Frederick, MD 21703

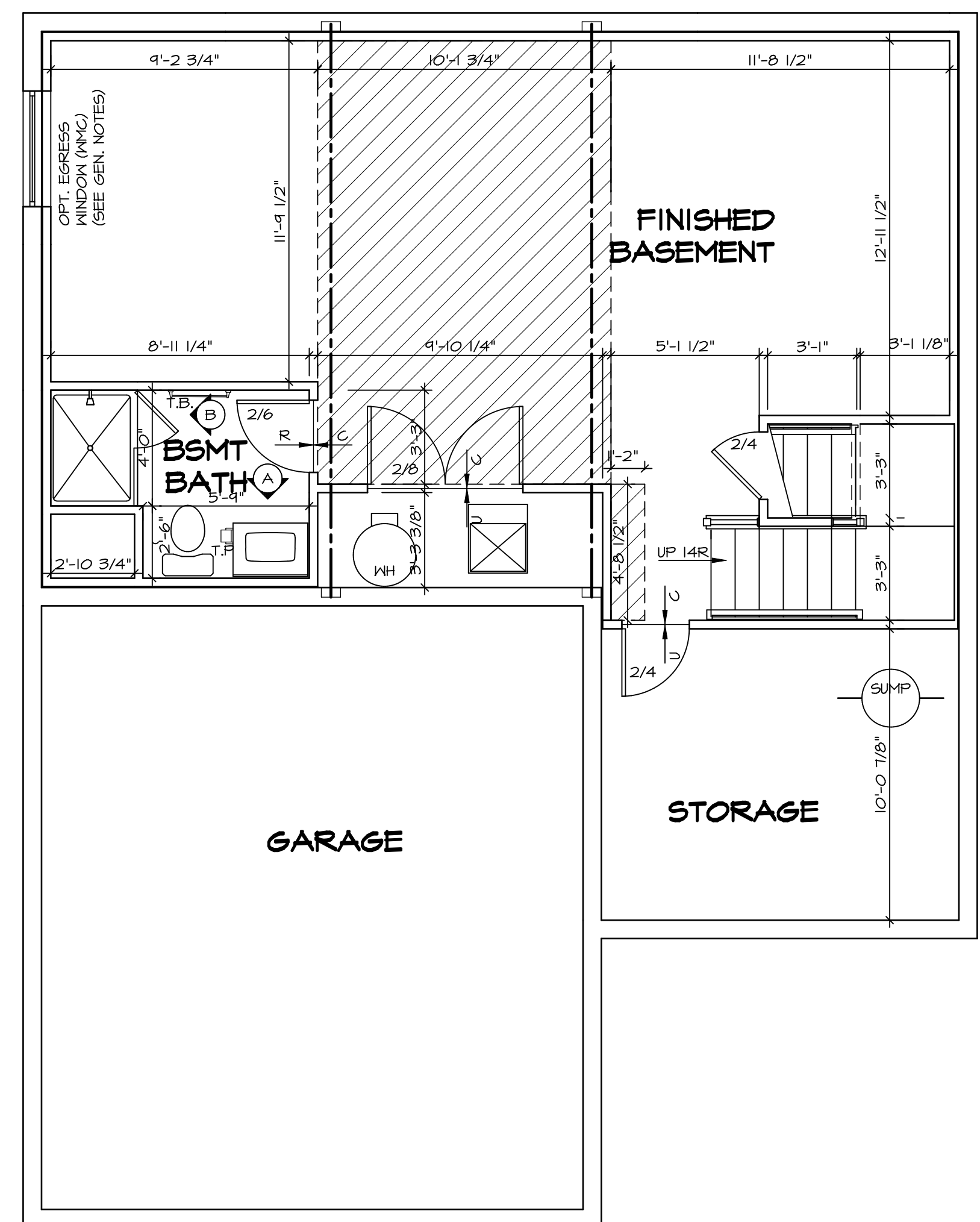
NVR, Inc., owner, expressly reserves its copyright in these plans. These plans are not to be reproduced, changed, copied, or otherwise used in any way without the written consent of NVR, Inc.

REV. NO.	DATE	REMARKS

LEGEND	
	BEARING WALL
	NON BEARING WALL
	INDICATES BEARING FROM POINT-LOAD ABOVE
	JACKS
	BEAM/HEADER
	PAD FOOTING
	STEEL COLUMN
	PORTAL FRAME
	JOIST/TRUSS
	LVL
	ENGINEERING PAGE NUMBER
SEE FC DETAILS FOR FRAMING CONNECTORS	

- ### FLOOR PLAN NOTES
- ALL HEADERS ARE (2) 2x6 w/ 2x4 WALLS OR (3) 2x6 w/ 2x6 WALLS, UNLESS OTHERWISE NOTED.
  - ALL HEADERS TO HAVE (1) 2x4 OR 2x6 JACK AND KING STUD EACH END, UNLESS OTHERWISE NOTED.
  - ALL EXTERIOR WALLS TO BE 4" w/ OSB OR 3 1/2" w/ T-PLY, ALL INTERIOR WALLS TO BE 3 1/2", UNLESS OTHERWISE NOTED.
  - HATCHED AREAS INDICATE DROPPED CEILING. ALL DROPPED CEILING ARE 12" UNLESS OTHERWISE NOTED.
  - SEE "BRACED WALL PANEL DETAIL SHEET" FOR SPECIAL WALL FRAMING LOCATIONS AND HEADER SIZES, IF APPLICABLE.
  - SEE STANDARD DETAIL CATEGORY "IT" SHEET(S) FOR INTERIOR TRIM DETAILS.
  - SEE ARCHITECTURAL DETAIL SHEET "AD" FOR HOUSE SPECIFIC INTERIOR TRIM OPTION TABLE.
  - ALL WINDOWS HAVE T-O 1/2" HEADER HEIGHT UNLESS OTHERWISE NOTED.
  - ALL HEADERS IN NON-BEARING WALLS SHALL BE A SINGLE FLAT 2X4 OR 2X6 ATTACHED TO CRIPPLES ABOVE, UNLESS OTHERWISE NOTED.
  - TANKED WATER HEATER SHOWN AS BASE CONDITION, OPTIONAL TANKLESS WATER HEATER IS AVAILABLE IN LIEU OF TANKED WATER HEATER.

- ### GYPSUM NOTES
- AT GARAGE:  
GYPSUM BOARD AT COMMON WALLS, CEILING, BEAM WRAPS AND SUPPORTS PER STANDARD DETAIL FA-1(b) FIRE ASSEMBLIES OR AS REQUIRED BY LOCAL CODE.
- AT STAIRS:  
1/2" GYPSUM BOARD AT UNDERSIDE OF STAIRS AND WALLS IN CLOSET



**BASEMENT FLOOR PLAN**  
SCALE: 1/4" = 1'-0"

SHEET NO.	MODEL	SET NO.	DATE	REV. NO.	DATE	REMARKS
A-6	ALLEGHENY	ALGOO	08/04/2017			
26	ALLEGHENY	ALGOO	08/04/2017			

NVR, Inc., owner, expressly reserves its copyright in these plans. These plans are not to be reproduced, changed, copied, or otherwise used in any way without the written consent of NVR, Inc.

NVR, Inc.  
Architectural Services  
5285 Westpark Drive  
Frederick, MD 21703

SET NO. ALGOO  
VERSION 01  
DRAWN BY TN  
DATE: 08/04/2017  
OPTION

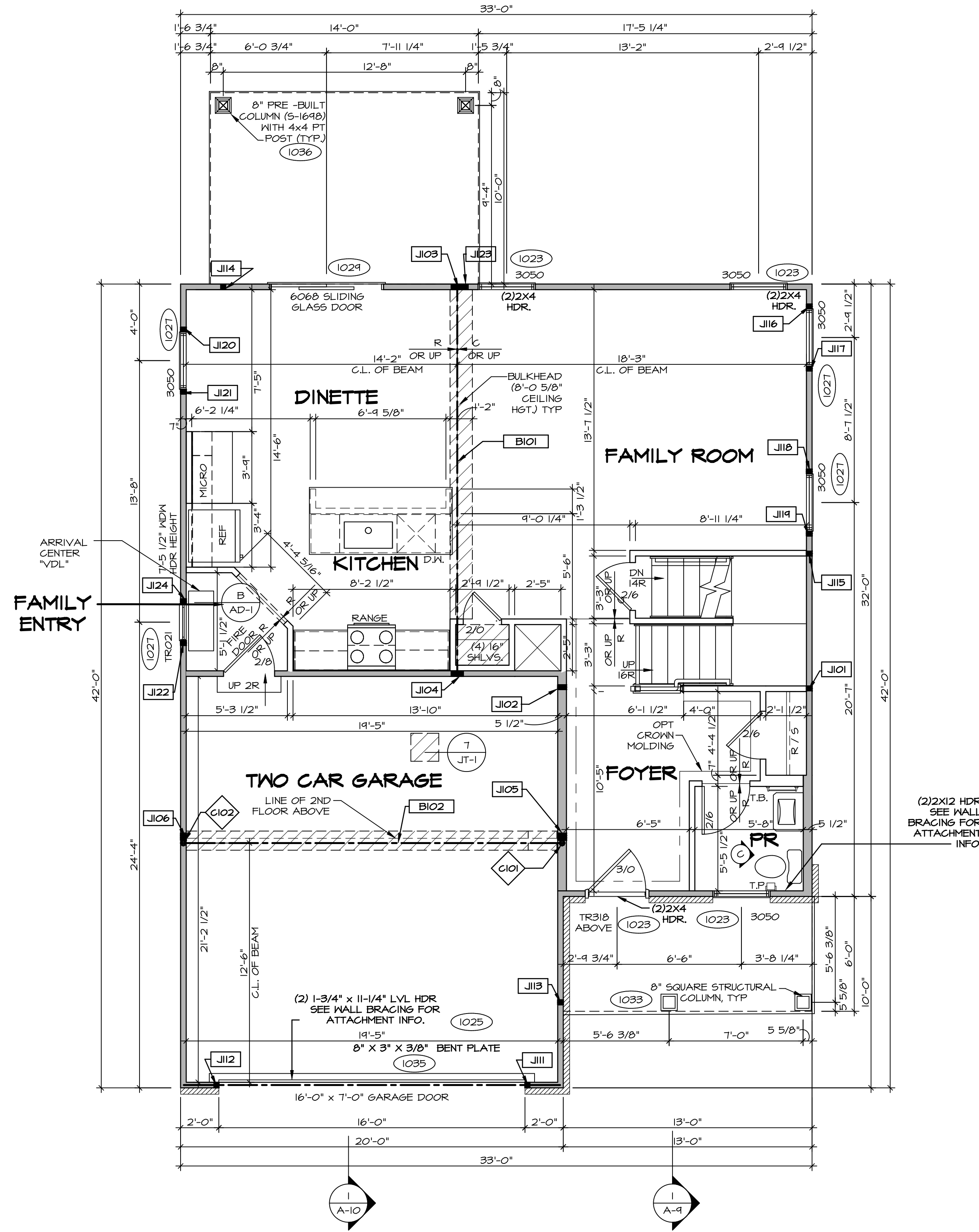
DRAWING TITLE  
BASEMENT FLOOR PLAN

OPTION DESCRIPTION

FIRST FLOOR JACK SCHEDULE				
IDENTIFIER	DESCRIPTION	OPTIONS	ENG. NUM.	REMARKS
J101	JACK - (2) 2X4 SFF STUD GRADE		1004	
J102	JACK - (2) 2X6 SFF STUD GRADE		1004	
J103	JACK - (3) 2X4 SFF#		1008	
J104	JACK - (3) 2X4 SFF#		1008	
J105	JACK - (3) 2X6 SFF#	ELA, ELB, ELK, ELL	1010	
J106	JACK - (3) 2X4 SFF#	ELA, ELB, ELK, ELL	1010	
J111	JACK - (2) 2X4 SFF STUD GRADE		1025	
J112	JACK - (2) 2X4 SFF STUD GRADE		1025	
J113	JACK - (2) 2X4 SFF STUD GRADE		1035	
J114	JACK - (2) 2X4 SFF STUD GRADE	EPE	1036	
J115	JACK - (2) 2X4 SFF STUD GRADE		1006	
J116	JACK - (2) 2X4 SFF STUD GRADE		1027	
J117	JACK - (2) 2X4 SFF STUD GRADE		1027	
J118	JACK - (2) 2X4 SFF STUD GRADE		1027	
J119	JACK - (2) 2X4 SFF STUD GRADE		1027	
J120	JACK - (2) 2X4 SFF STUD GRADE		1027	
J121	JACK - (2) 2X4 SFF STUD GRADE		1027	
J122	JACK - (2) 2X4 SFF STUD GRADE		1027	
J123	JACK - (2) 2X4 SFF STUD GRADE		1036	
J124	JACK - (2) 2X4 SFF STUD GRADE		1027	

FIELD INSTALLED FIRST FLOOR BEAM/HEADER SCHEDULE					
IDENTIFIER	DESCRIPTION	LENGTH	OPTIONS	ENG. NUM.	REMARKS
B101	BEAM STEEL - W10X30	30'-6"		1008	
B102	BEAM STEEL - W12X22	20'-0 1/2"	ELA, EVA	1019	

STEEL COLUMN SCHEDULE					
IDENTIFIER	STYLE	HEIGHT	OPTIONS	ENG. NUM.	REMARKS
C101	STANCHION - 3 IN DIA 116A ADJ	8'-0 13/16"	ELA, EVA	1019	
C102	STANCHION - 3 IN DIA 116A ADJ	9'-3 5/8"	ELA, EVA	1019	



**FIRST FLOOR PLAN**  
SCALE: 1/4" = 1'-0"

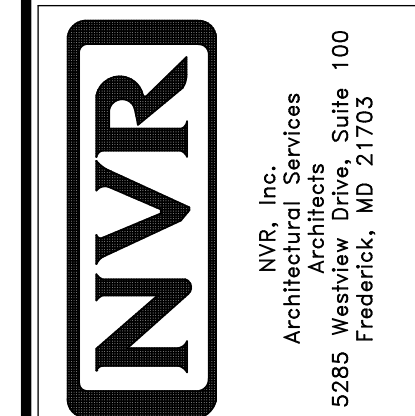
LEGEND	
[Symbol]	BEARING WALL
[Symbol]	NON BEARING WALL
[Symbol]	INDICATES BEARING FROM POINT-LOAD ABOVE
[Symbol]	JACKS
[Symbol]	BEAM/HEADER
[Symbol]	PAD FOOTING
[Symbol]	STEEL COLUMN
[Symbol]	PORTAL FRAME
[Symbol]	JOIST/TRUSS
[Symbol]	LVL
[Symbol]	ENGINEERING PAGE NUMBER

SEE FC DETAILS FOR FRAMING CONNECTORS

- FLOOR PLAN NOTES** RYAN
- ALL HEADERS ARE (2) 2x6 w/ 2x4 WALLS OR (3) 2x6 w/ 2x6 WALLS, UNLESS OTHERWISE NOTED.
  - ALL HEADERS TO HAVE (1) 2x4 OR 2x6 JACK AND KING STUD EACH END, UNLESS OTHERWISE NOTED.
  - ALL EXTERIOR WALLS TO BE 4" w/ OSB OR 3 1/2" w/ LAMINATED FIBROUS STRUCTURAL SHEATHING, ALL INTERIOR WALLS TO BE 3 1/2", UNLESS OTHERWISE NOTED.
  - HATCHED AREAS INDICATE DROPPED CEILINGS. ALL DROPPED CEILINGS ARE 12" UNLESS OTHERWISE NOTED.
  - SEE "BRACED WALL PANEL DETAIL SHEET" FOR SPECIAL WALL FRAMING LOCATIONS AND HEADER SIZES, IF APPLICABLE.
  - SEE STANDARD DETAIL CATEGORY "IT" SHEET(S) FOR INTERIOR TRIM DETAILS.
  - SEE ARCHITECTURAL DETAIL SHEET "AD" FOR HOUSE SPECIFIC INTERIOR TRIM OPTION TABLE.
  - ALL WINDOWS HAVE 7'-0 1/2" HEADER HEIGHT UNLESS OTHERWISE NOTED.
  - ALL HEADERS IN NON-BEARING WALLS SHALL BE A SINGLE FLAT 2X4 OR 2X6 ATTACHED TO GRIPPLES ABOVE, UNLESS OTHERWISE NOTED.
  - TANKED WATER HEATER SHOWN AS BASE CONDITION, OPTIONAL TANKLESS WATER HEATER IS AVAILABLE IN LIEU OF TANKED WATER HEATER.

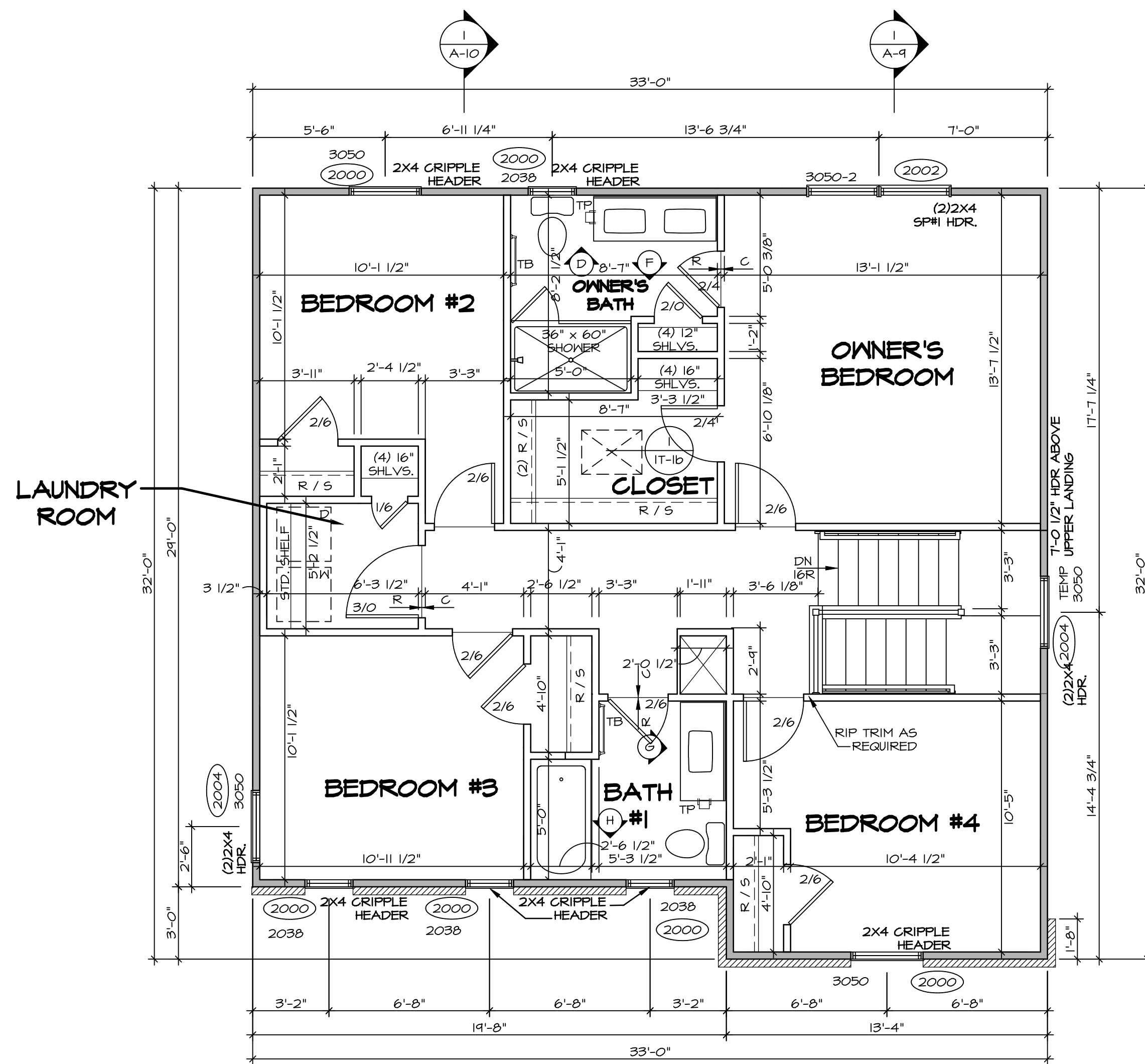
- GYPSUM NOTES**
- AT GARAGE:  
GYPSUM BOARD AT COMMON WALLS, CEILINGS, BEAM WRAPS AND SUPPORTS PER STANDARD DETAIL FA-1(b) FIRE ASSEMBLIES OR AS REQUIRED BY LOCAL CODE.
- AT STAIRS:  
1/2" GYPSUM BOARD AT UNDERSIDE OF STAIRS AND WALLS IN CLOSET

NVR, Inc., owner, expressly reserves its copyright in these plans. These plans are not to be reproduced, changed, copied, or otherwise used in any way without the written consent of NVR, Inc.



SET NO. ALGOO	VERSION 01
DRAWN BY YON	DATE: 08/10/2017
OPTION	

MODEL ALLEGHENY	SHEET NO. A-7
DRAWING TITLE FIRST FLOOR PLAN	28
OPTION DESCRIPTION	



**SECOND FLOOR PLAN**  
SCALE: 1/4" = 1'-0"

LEGEND	
	BEARING WALL
	NON BEARING WALL
	INDICATES BEARING FROM POINT-LOAD ABOVE
	JACKS
	BEAM/HEADER
	PAD FOOTING
	STEEL COLUMN
	PORTAL FRAME
	JOIST/TRUSS
	LVL
	ENGINEERING PAGE NUMBER

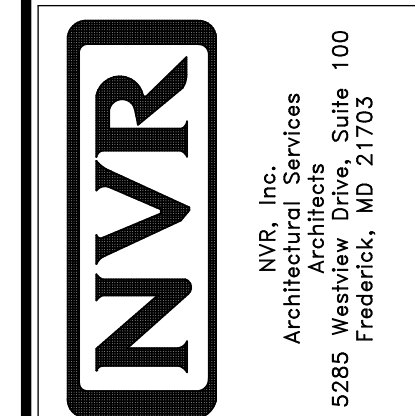
SEE FC DETAILS FOR FRAMING CONNECTORS

- FLOOR PLAN NOTES** RYAN
- ALL HEADERS ARE (2) 2x6 w/ 2x4 WALLS OR (3) 2x6 w/ 2x6 WALLS, UNLESS OTHERWISE NOTED.
  - ALL HEADERS TO HAVE (1) 2x4 OR 2x6 JACK AND KING STUD EACH END, UNLESS OTHERWISE NOTED.
  - ALL EXTERIOR WALLS TO BE 4" w/ OSB OR 3 1/2" w/ T-PLY, ALL INTERIOR WALLS TO BE 3 1/2", UNLESS OTHERWISE NOTED.
  - HATCHED AREAS INDICATE DROPPED CEILINGS. ALL DROPPED CEILINGS ARE 12" UNLESS OTHERWISE NOTED.
  - SEE "BRACED WALL PANEL DETAIL SHEET" FOR SPECIAL WALL FRAMING LOCATIONS AND HEADER SIZES, IF APPLICABLE.
  - SEE STANDARD DETAIL CATEGORY "1T" SHEET(S) FOR INTERIOR TRIM DETAILS.
  - SEE ARCHITECTURAL DETAIL SHEET "AD" FOR HOUSE SPECIFIC INTERIOR TRIM OPTION TABLE.
  - ALL WINDOWS HAVE 1'-0 1/2" HEADER HEIGHT UNLESS OTHERWISE NOTED.
  - ALL HEADERS IN NON-BEARING WALLS SHALL BE A SINGLE FLAT 2x4 OR 2x6 ATTACHED TO CRIPPLES ABOVE, UNLESS OTHERWISE NOTED.
  - TANKED WATER HEATER SHOWN AS BASE CONDITION, OPTIONAL TANKLESS WATER HEATER IS AVAILABLE IN LIEU OF TANKED WATER HEATER.

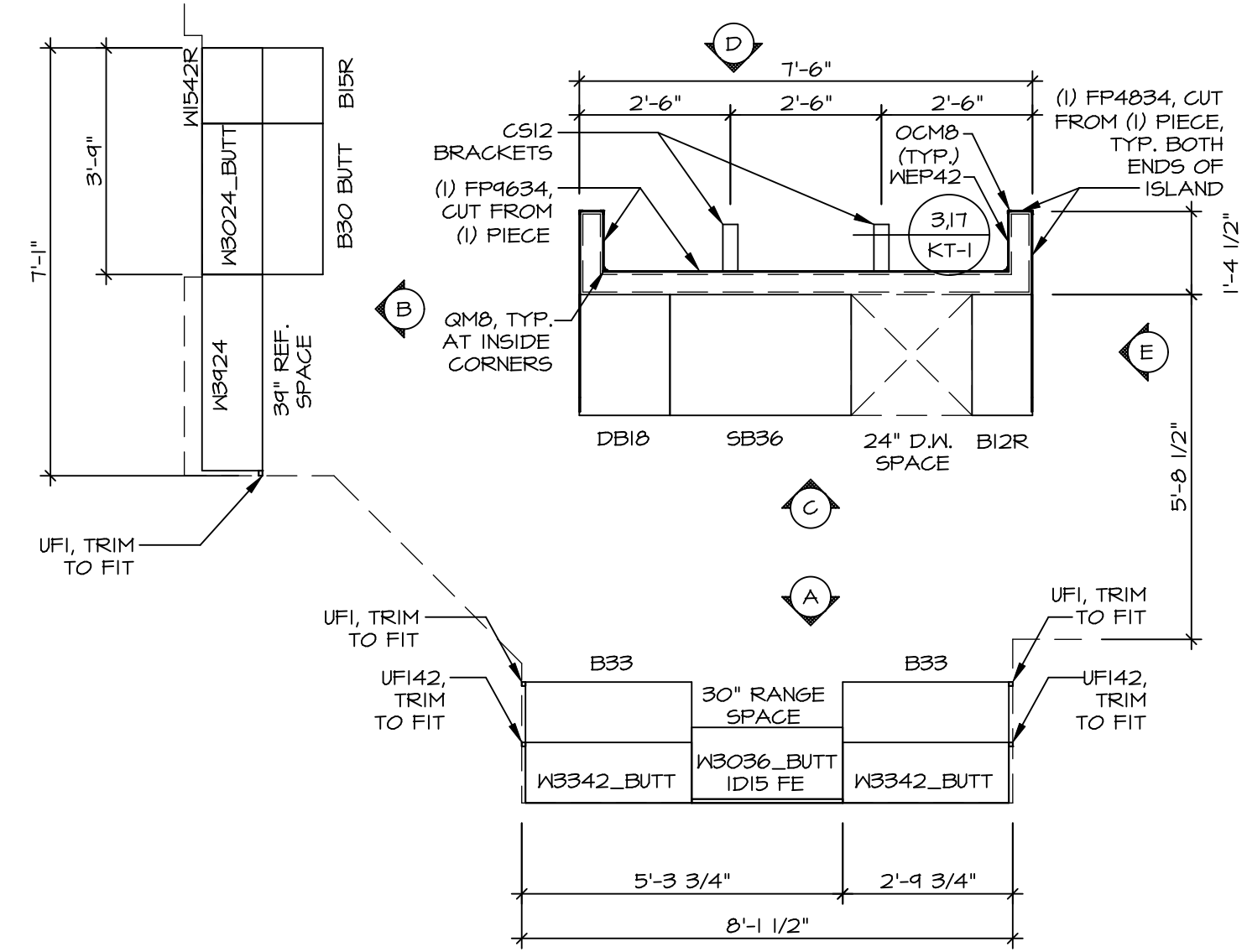
- GYPSUM NOTES**
- AT GARAGE:  
GYPSUM BOARD AT COMMON WALLS, CEILINGS, BEAM WRAPS AND SUPPORTS PER STANDARD DETAIL FA-1(b) FIRE ASSEMBLIES OR AS REQUIRED BY LOCAL CODE.
- AT STAIRS:  
1/2" GYPSUM BOARD AT UNDERSIDE OF STAIRS AND WALLS IN CLOSET

REV. NO.	DATE	REMARKS

NVR, Inc., owner, expressly reserves its copyright in these plans. These plans are not to be reproduced, changed, copied, or otherwise used in any way without the written consent of NVR, Inc.



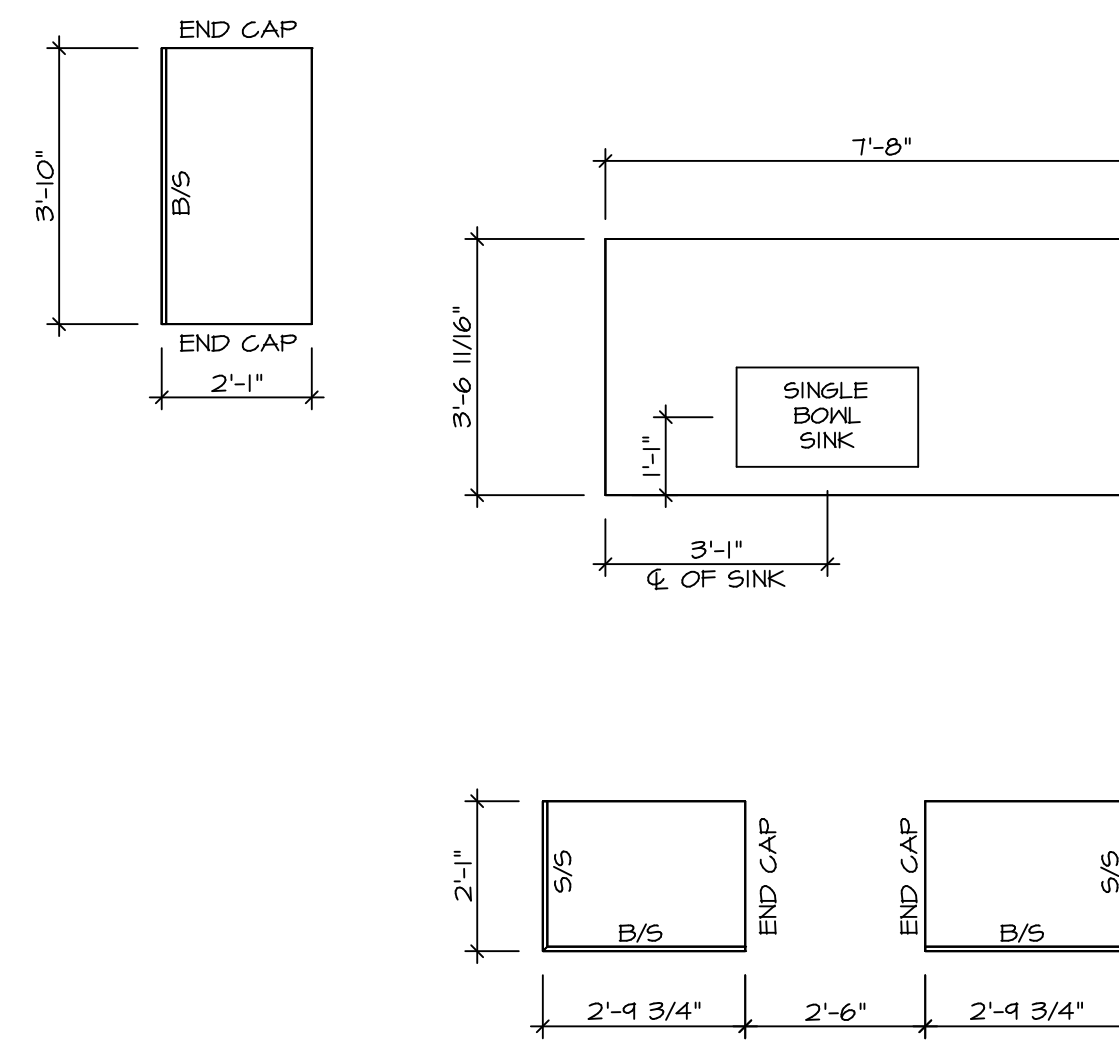
MODEL	ALLEGHENY
SET NO.	ALGOO
VERSION	01
DRAWN BY	YON
DATE	08/10/2017
OPTION	OPTION
DRAWING TITLE	SECOND FLOOR PLAN
OPTION DESCRIPTION	
SHEET NO.	A-8
	31



**KITCHEN CABINET  
PLAN KC - 3489**

SCALE: 3/8" = 1'-0"

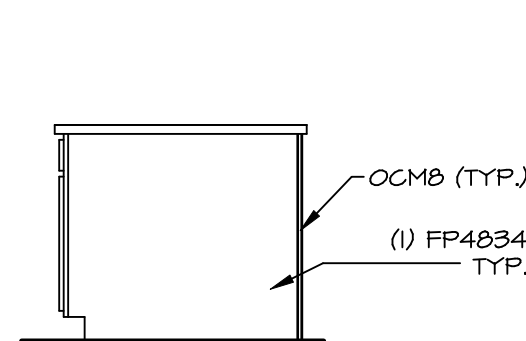
1  
A-12



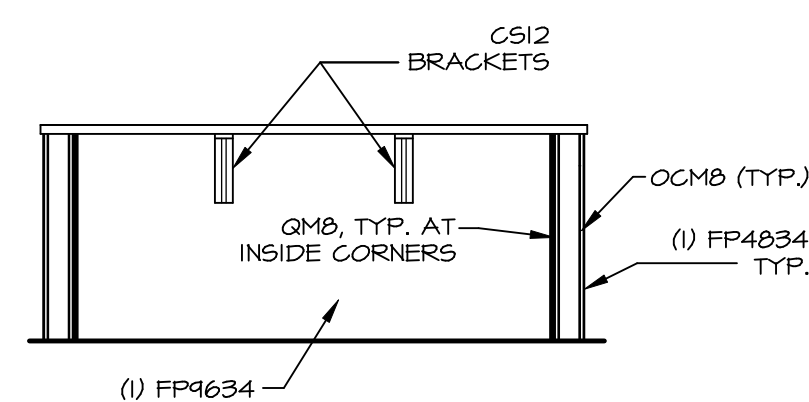
**KITCHEN COUNTERTOP  
PLAN KC - 3489**

SCALE: 3/8" = 1'-0"

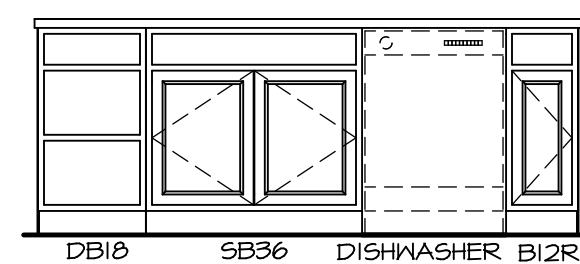
2  
A-12



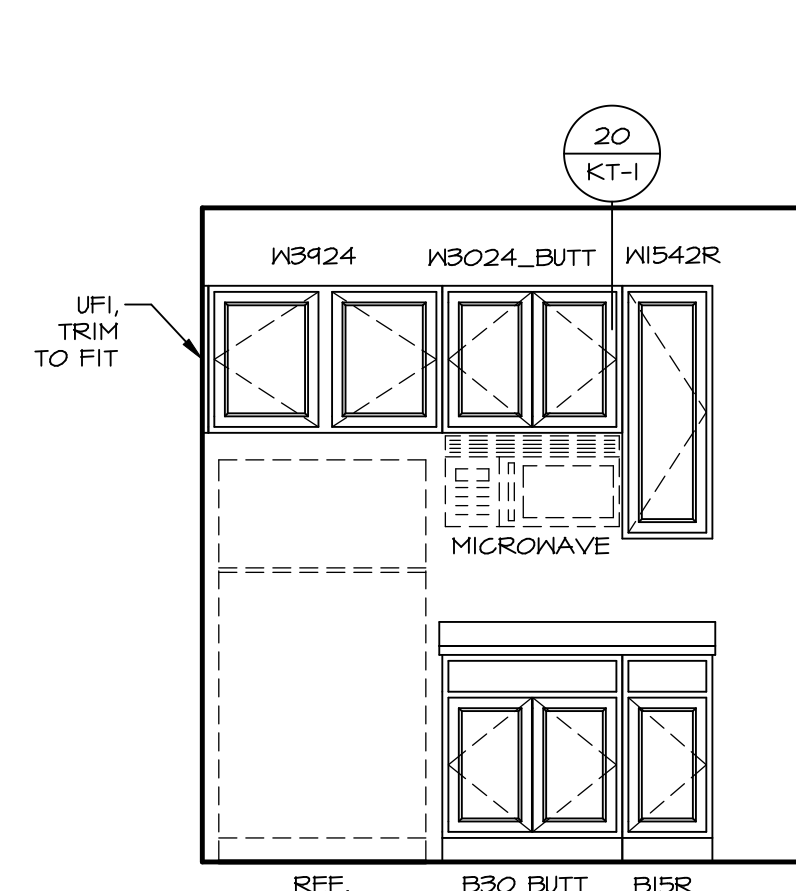
**ELEVATION "E"**  
SCALE: 3/8" = 1'-0"



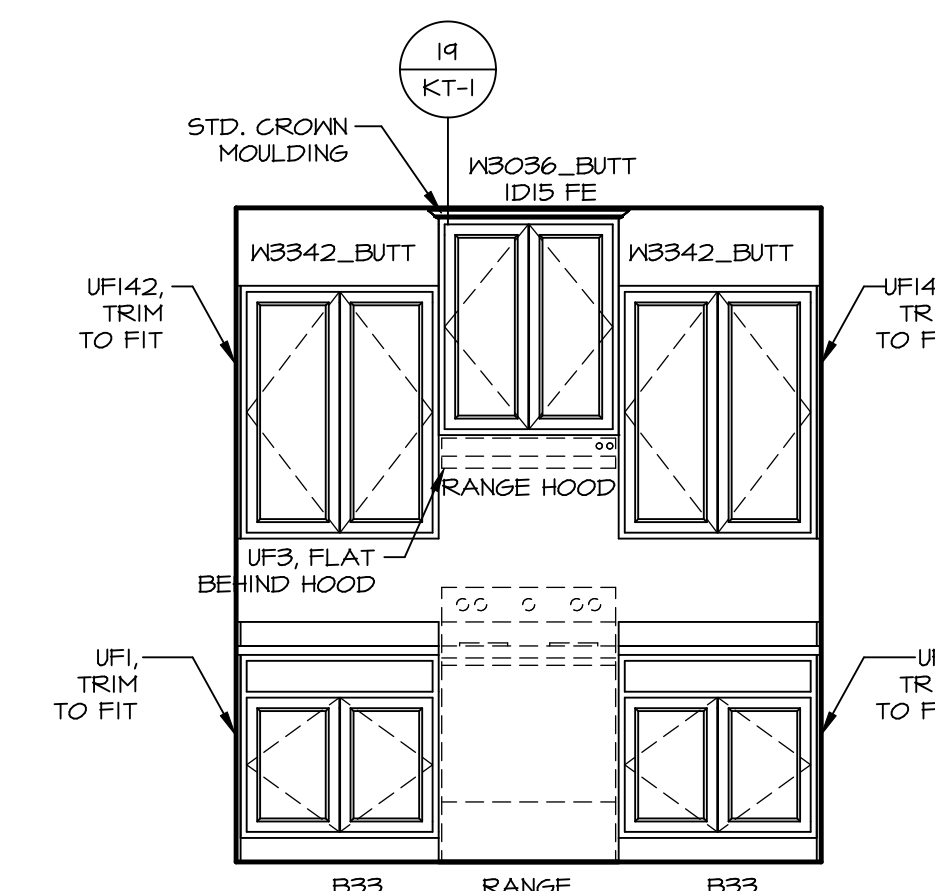
**ELEVATION "D"**  
SCALE: 3/8" = 1'-0"



**ELEVATION "C"**  
SCALE: 3/8" = 1'-0"



**ELEVATION "B"**  
SCALE: 3/8" = 1'-0"

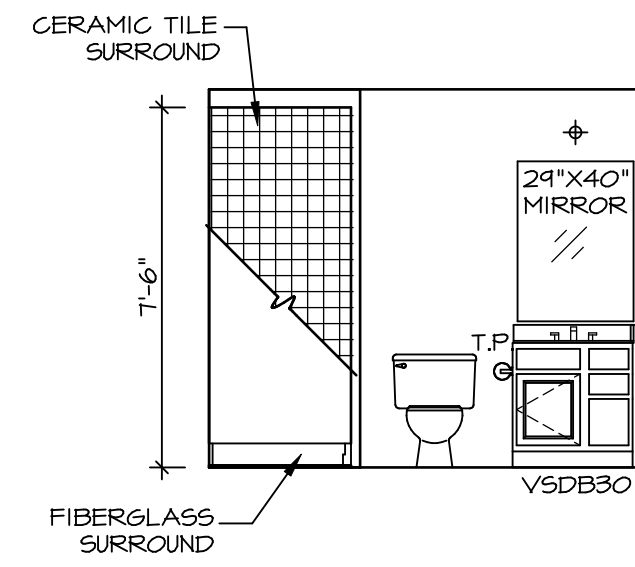


**ELEVATION "A"**  
SCALE: 3/8" = 1'-0"

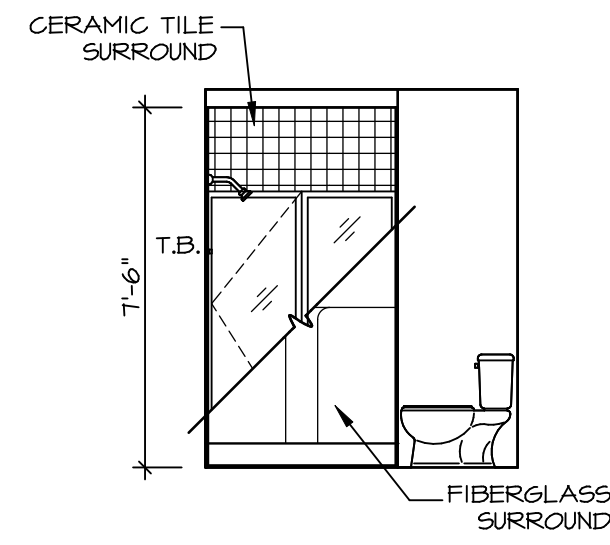
NOTE:  
CABINET LAYOUT(S) ARE  
BASED ON FINISHED  
DIMENSION TO DRYNALL.

NOTE:  
KITCHEN ELEVATIONS/PLANS CALL  
OUT STANDARD MOLDING. REFER TO  
DETAIL 11/KT-1 FOR REPLACEMENT  
BASED ON CABINET STYLE.

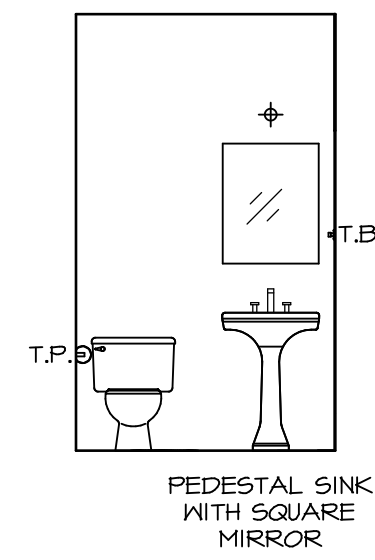
SHEET NO. <b>A-12</b>	MODEL <b>ALLEGHENY</b>	DRAWING TITLE <b>KITCHEN PLANS</b>	OPTION DESCRIPTION	REV. NO.	DATE	REMARKS
SET NO. ALGOO VERSION 01 DRAWN BY KDH DATE: 8/3/17 OPTION				NVR, Inc., owner, expressly reserves its copyright interest in the computer generated drawings and plans. These plans are not to be reproduced, changed, copied in any way, or otherwise transmitted in any form or by any means, electronic or mechanical, including photocopying, recording, or by any information storage and retrieval system, without the prior written consent of NVR, Inc.		
NVR, Inc. Architectural Services Architects & Interiors 5285 Westover Hills Frederick, MD 21703				SHEET NO. <b>43</b> C:\NVR\Solves\ALLEGHENY_ALGOO_01\DCY-IP-0144\94628\Sheets\Lot_Specific\43_A-12_KIT_LS.dwg 05/17/18 - 3:04 am		



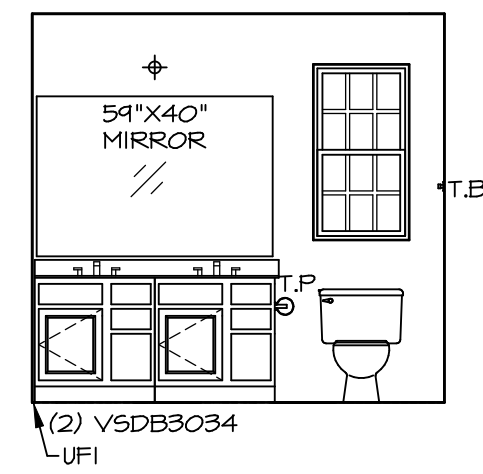
**A BASEMENT BATH**  
SCALE: 1/4" = 1'-0"



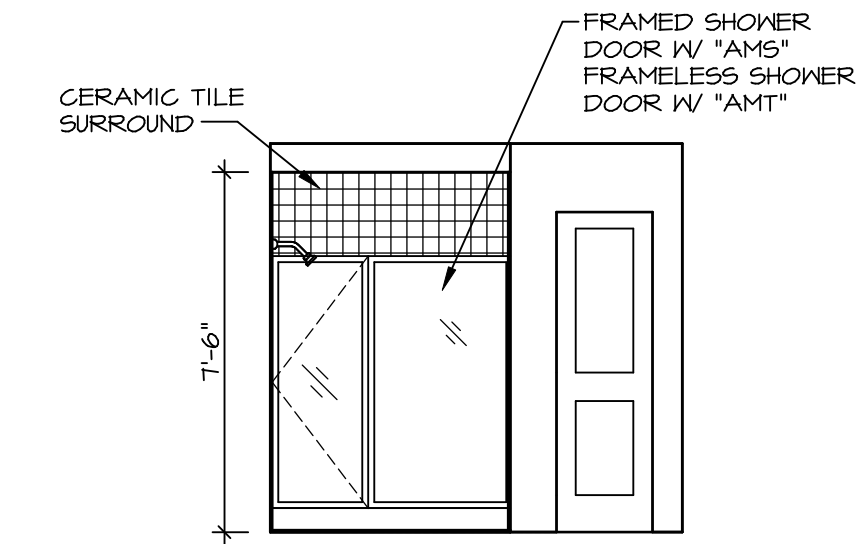
**B BASEMENT BATH**  
SCALE: 1/4" = 1'-0"



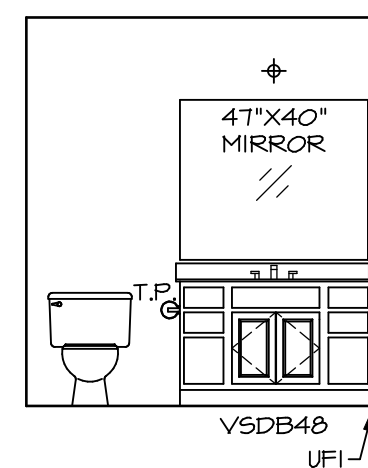
**C POWDER ROOM**  
SCALE: 1/4" = 1'-0"



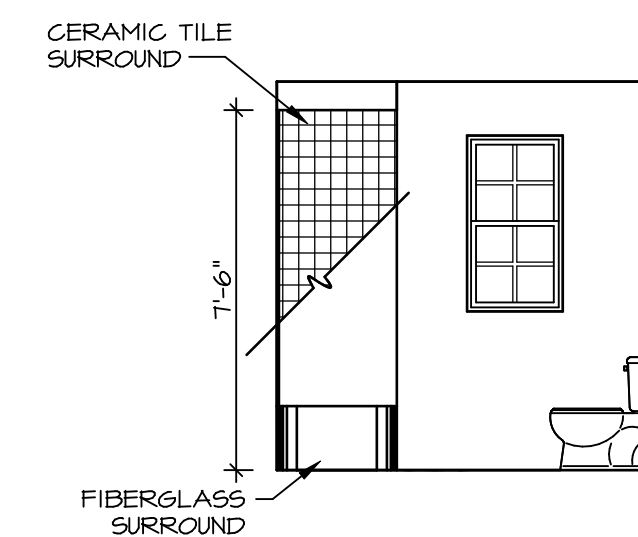
**D OWNER'S BATH**  
SCALE: 1/4" = 1'-0"



**E OWNER'S BATH**  
SCALE: 1/4" = 1'-0"



**G BATH #1**  
SCALE: 1/4" = 1'-0"



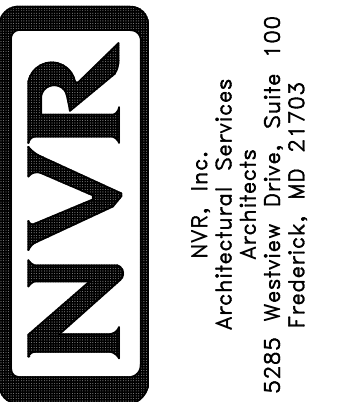
**H BATH #1**  
SCALE: 1/4" = 1'-0"

- NOTES:**
1. TEMPERED GLASS SHOWER ENCLOSURE WITH SWING DOOR OR OPTIONAL SLIDING DOOR BY DIVISION
  2. TUB ACCESS PANELS PROVIDED AS NEEDED, ALL MATERIALS BY DIVISION
  3. REFER TO SHEET IT-2 FOR TUB AND SHOWER DETAILS.
  4. ALL VSD24-42 DRAWERS TO BE SET ON RIGHT HAND.
  5. ALL BATH ELEVATIONS ARE SHOWN PER PLAN.

REMARKS

REV. NO. DATE

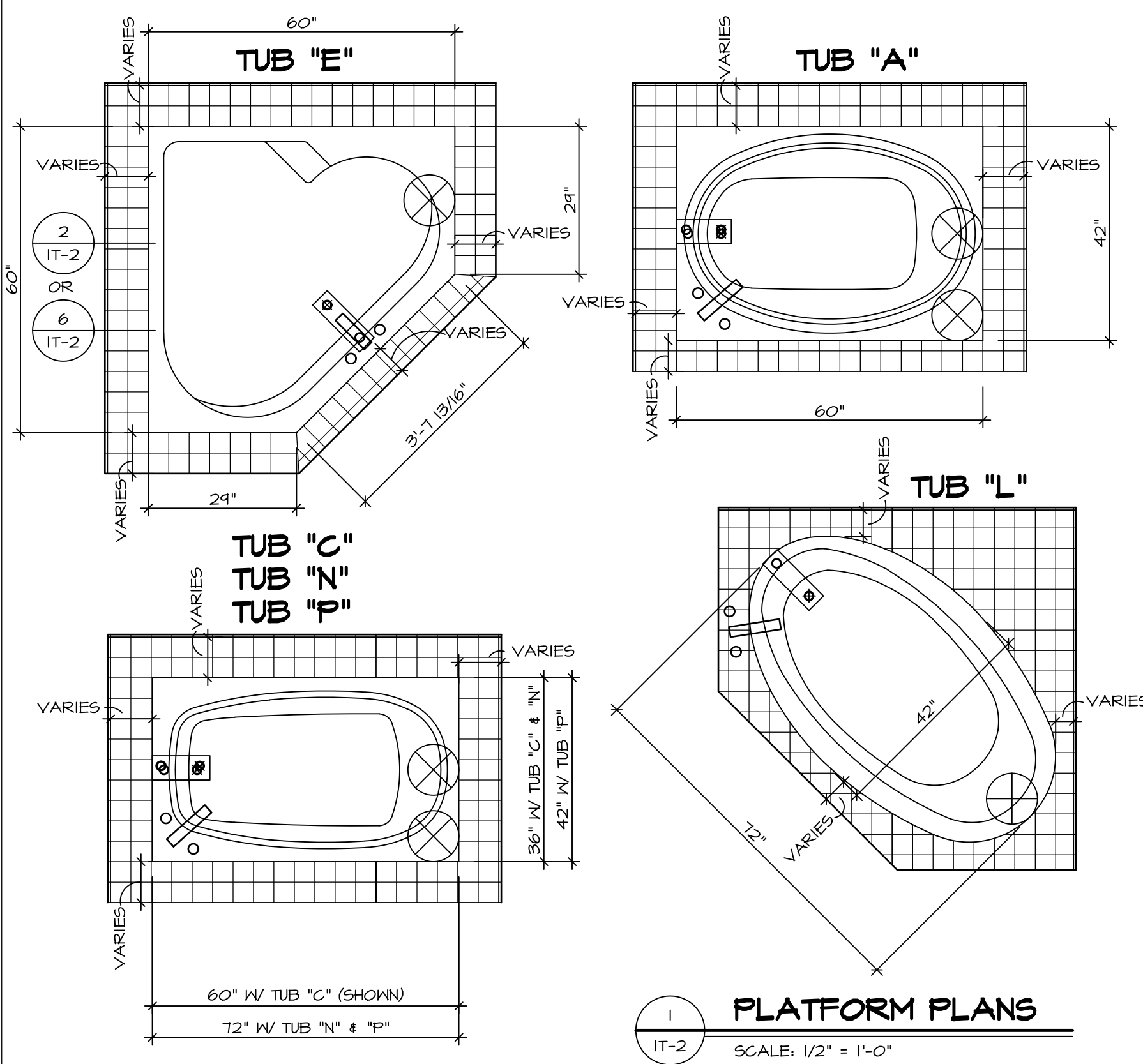
NVR, Inc., owner, expressly reserves its copyright in these plans. These plans are not to be reproduced, changed, copied, or otherwise used without the written consent of NVR, Inc.



SET NO. ALGOO  
VERSION 01  
DRAWN BY YON  
DATE: 4/8/17  
OPTION

SHEET NO. **ALLEGHENY**  
**A-13**  
DRAWING TITLE  
**BATH ELEVATIONS**  
OPTION DESCRIPTION  
**44**



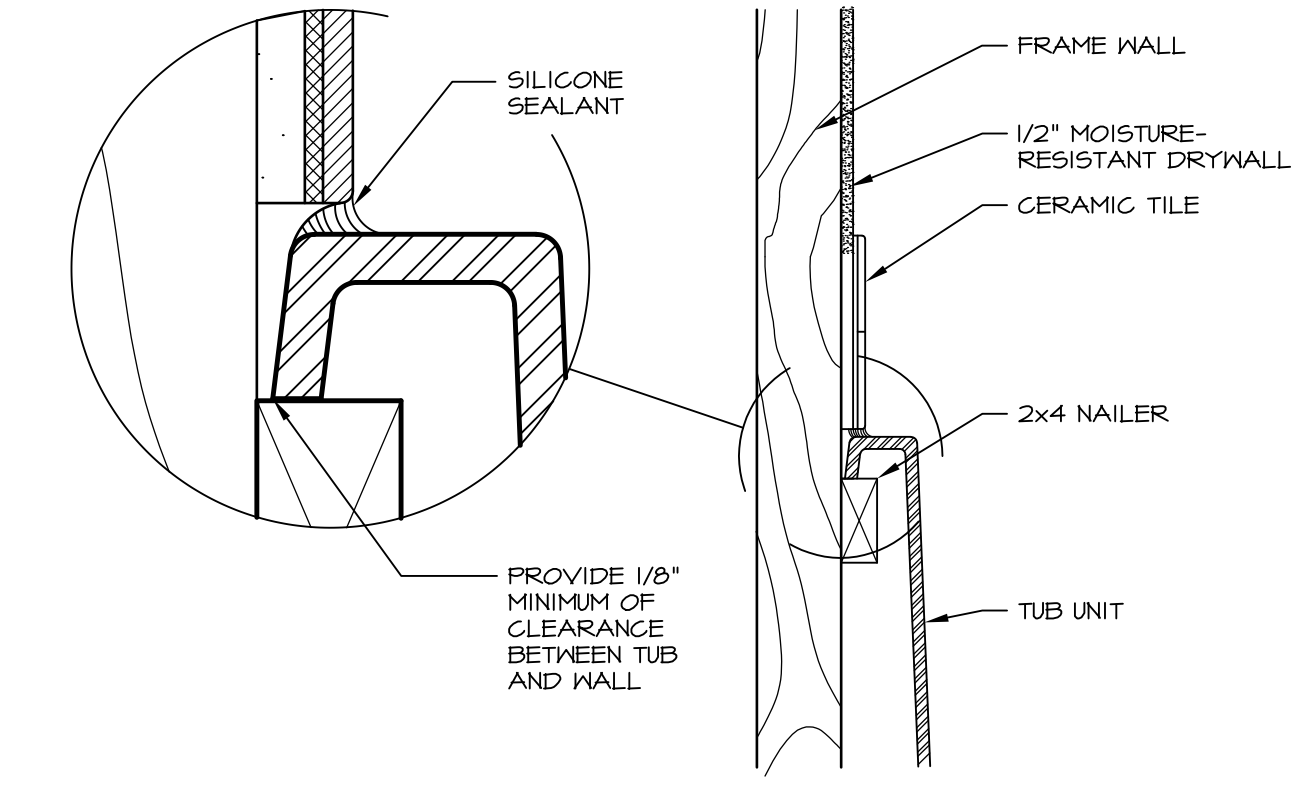


**1 PLATFORM PLANS**  
SCALE: 1/2" = 1'-0"

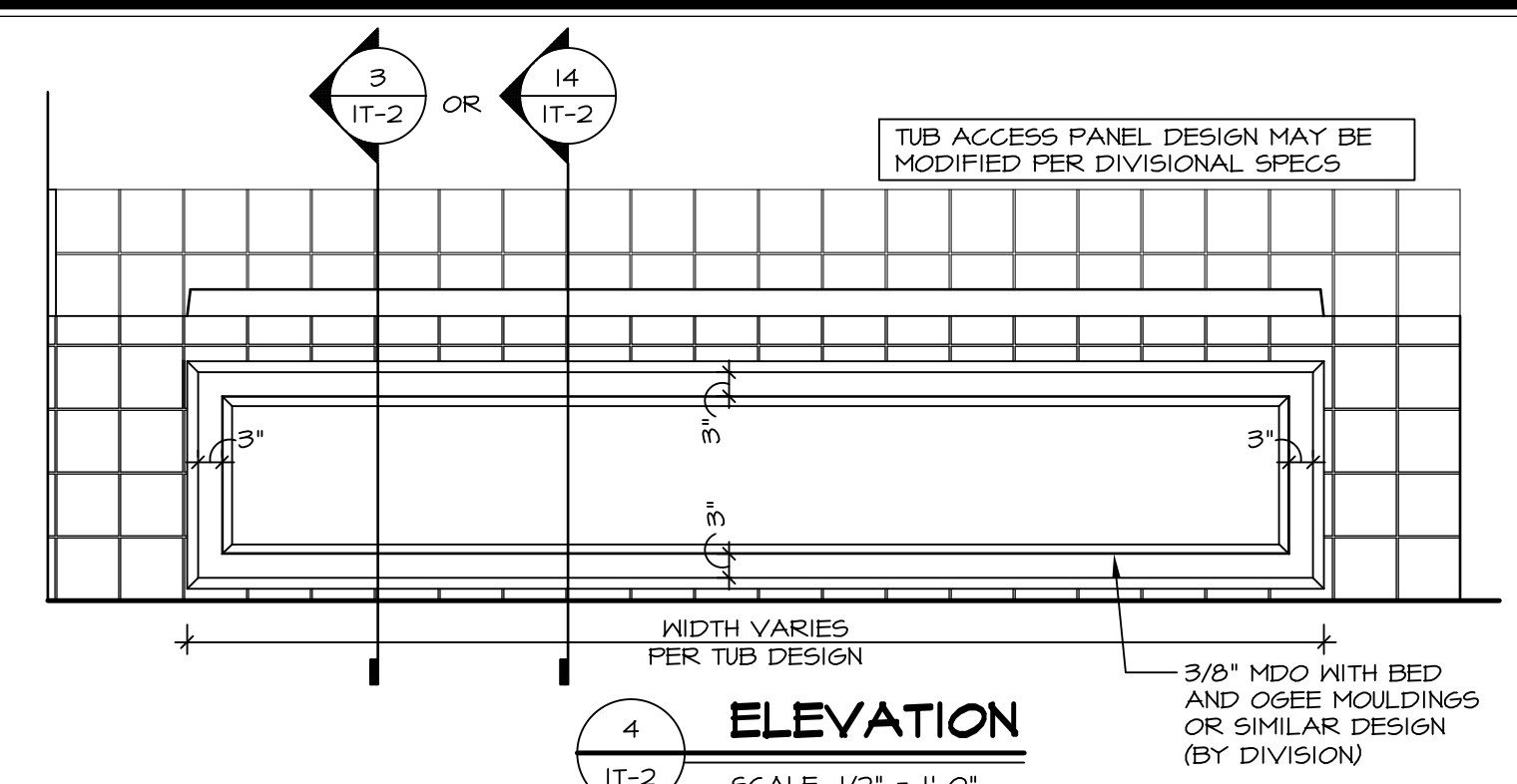
TUB	MANUF.	HEIGHT	WIDTH	LENGTH	TUB DECK PANEL HEIGHT
"A"	KOHLER/ STERLING	18 3/4"	42"	60"	17 1/8"
"C"	KOHLER/ STERLING	18 3/4"	36"	60"	17 1/8"
"E"	KOHLER/ STERLING	19 1/2"	60"	60"	17 7/8"
"L"	KOHLER/ STERLING	18 1/2"	42"	72"	16 7/8"
"N"	KOHLER/ STERLING	18 3/4"	36"	72"	17 1/8"
"P"	KOHLER/ STERLING	18 3/4"	42"	72"	17 1/8"



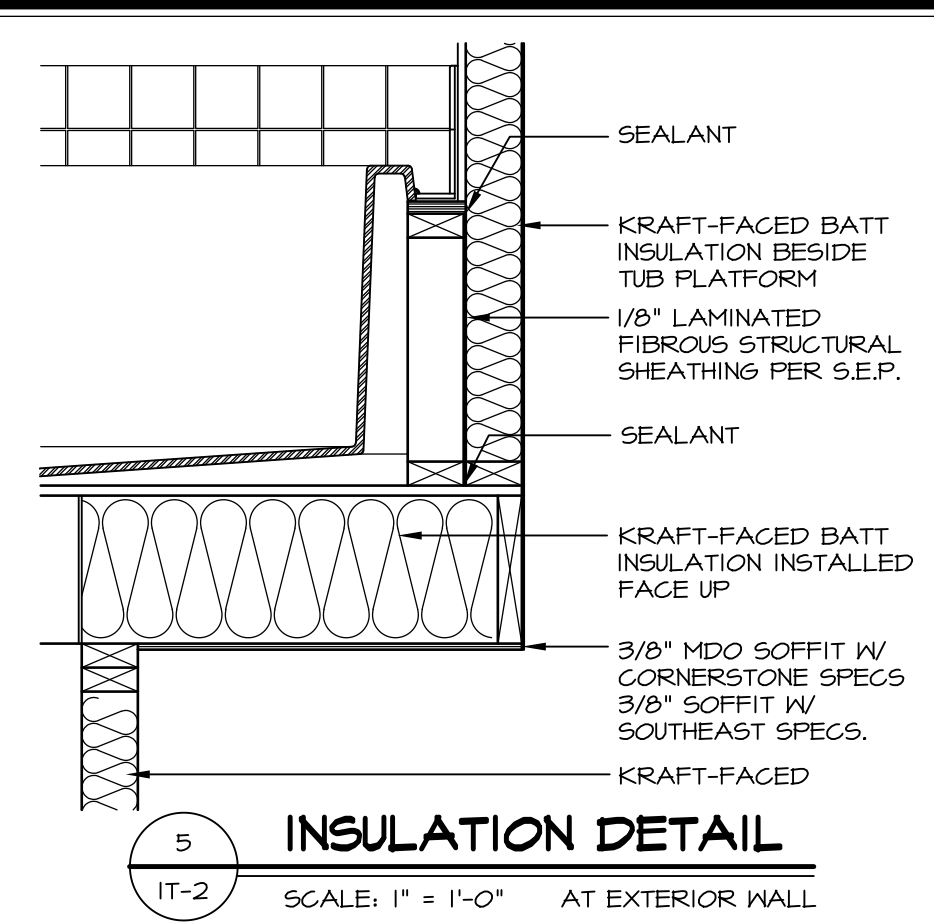
**2 SECTION OF TUB ON PLATFORM CONDITION**  
SCALE: 1" = 1'-0"



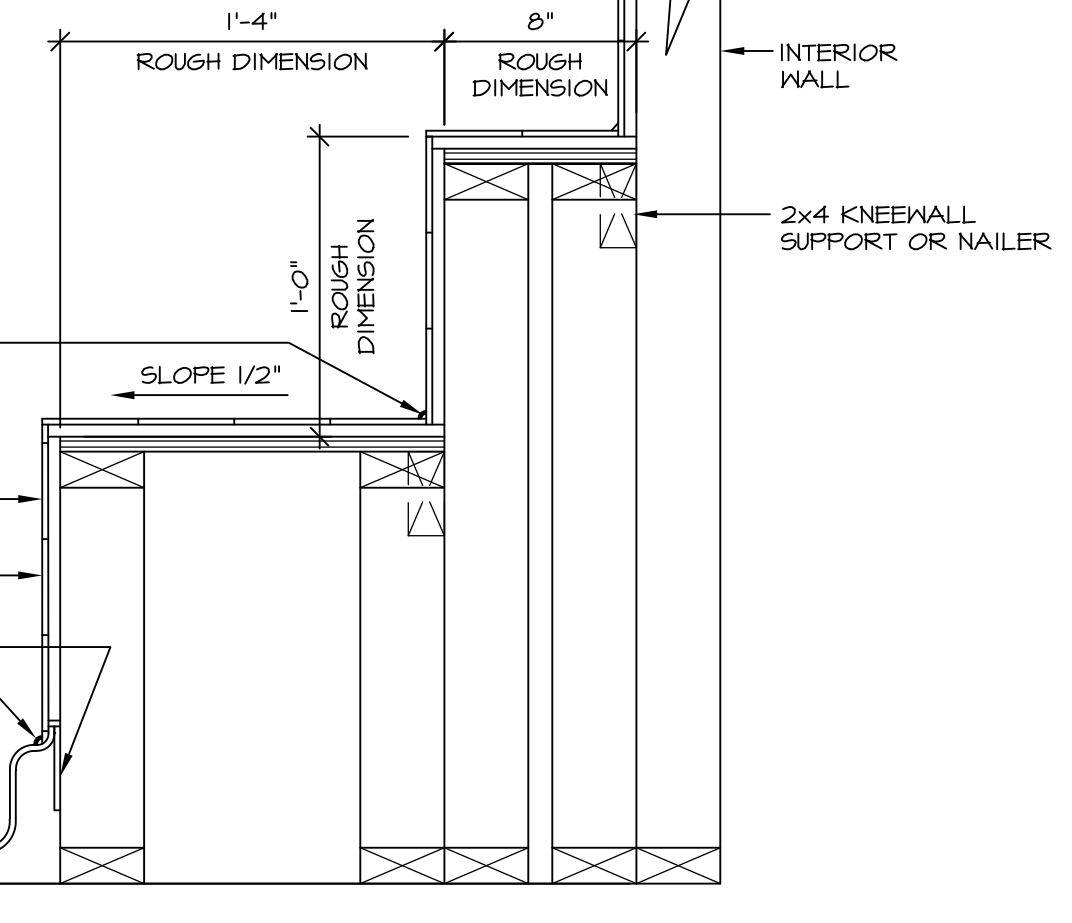
**3 SECTION OF TUB TO WALL CONDITION**  
SCALE: 1 1/2" = 1'-0"



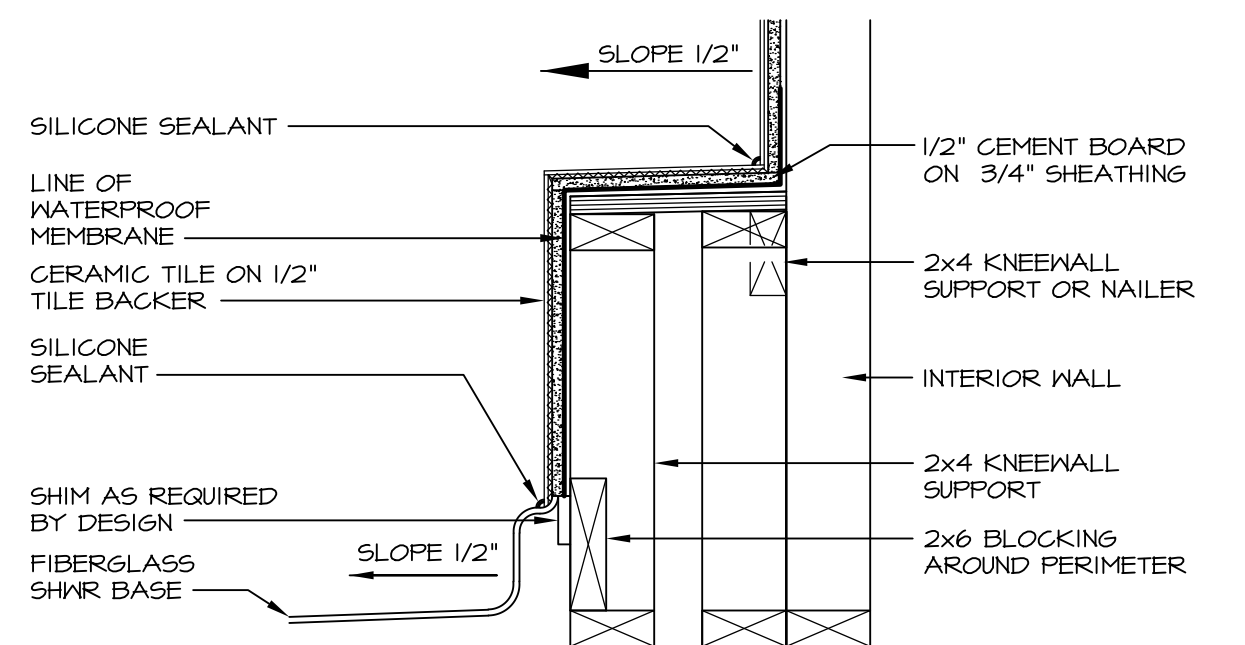
**4 ELEVATION**  
SCALE: 1/2" = 1'-0"



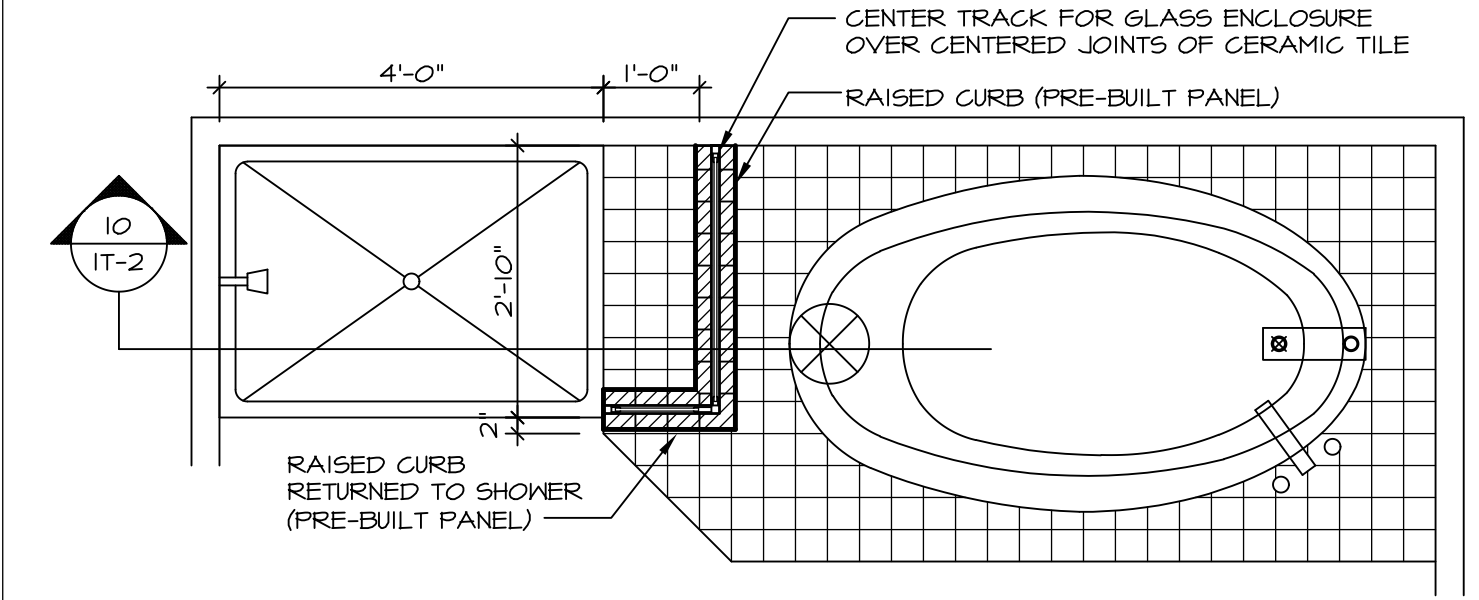
**5 INSULATION DETAIL**  
SCALE: 1" = 1'-0" AT EXTERIOR WALL



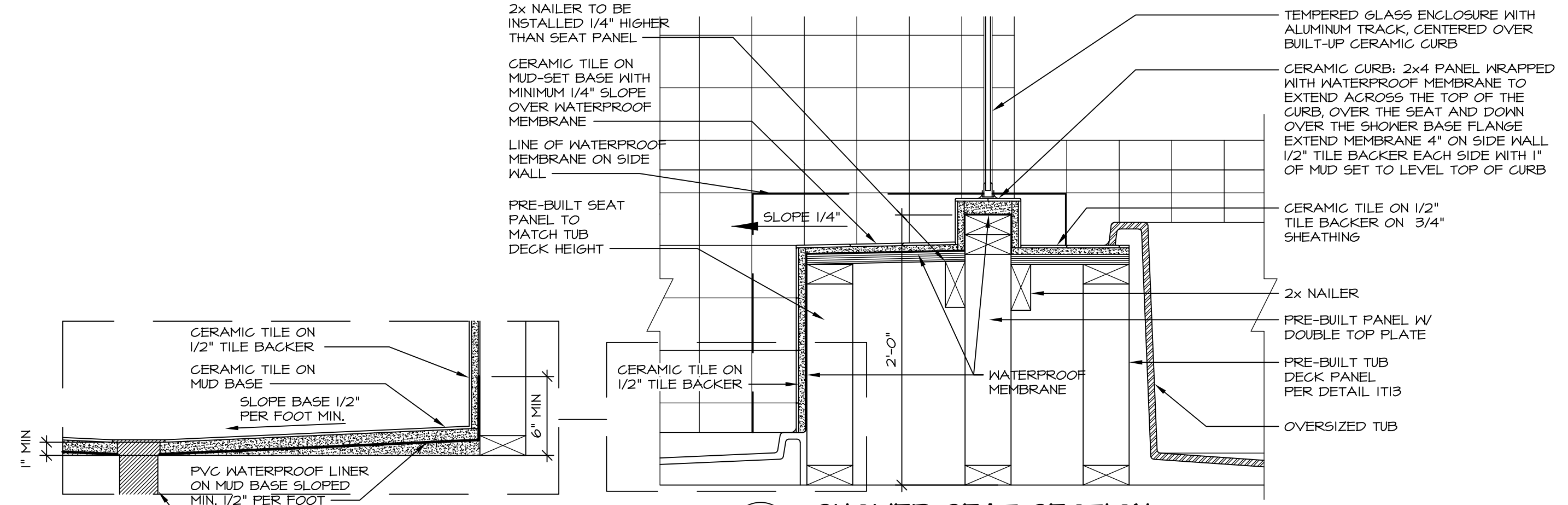
**6 SECTION OF SHOWER SEAT AND SHELF**  
SCALE: 1 1/2" = 1'-0"



**7 SECTION OF SHOWER SEAT**  
SCALE: 1-1/2" = 1'-0" FIBERGLASS SHOWER BASE



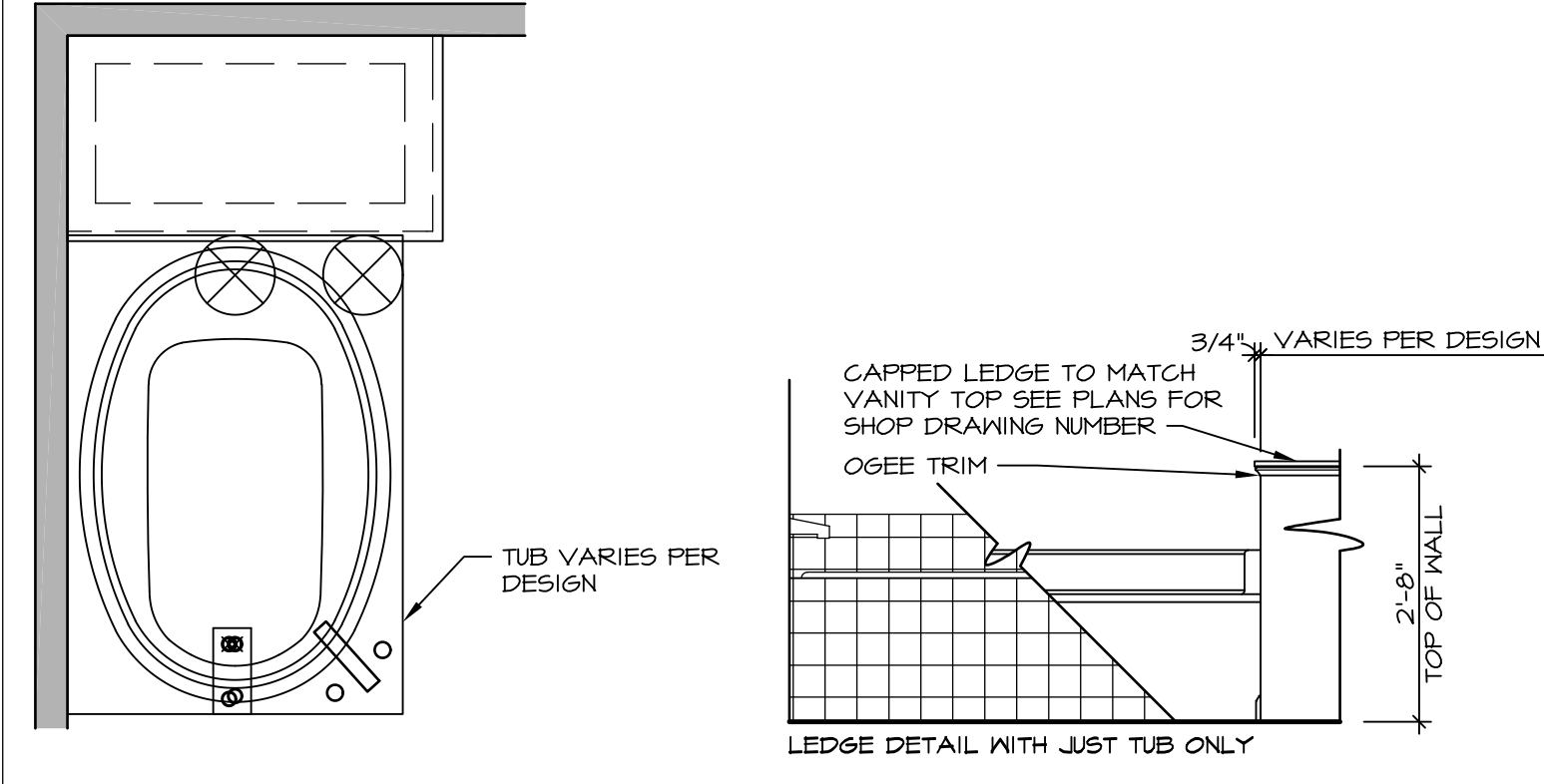
**9 SHOWER SEAT PLAN / DETAIL**  
SCALE: 1/2" = 1'-0"



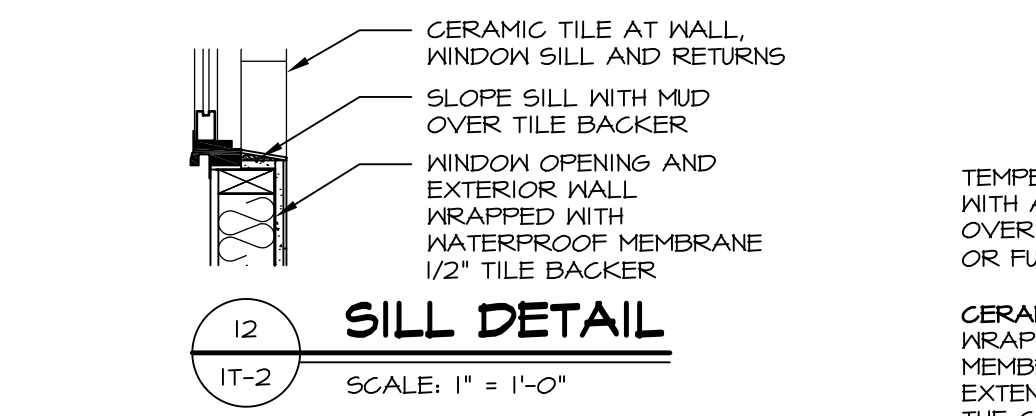
**10 SHOWER SEAT SECTION**  
SCALE: 1-1/2" = 1'-0"



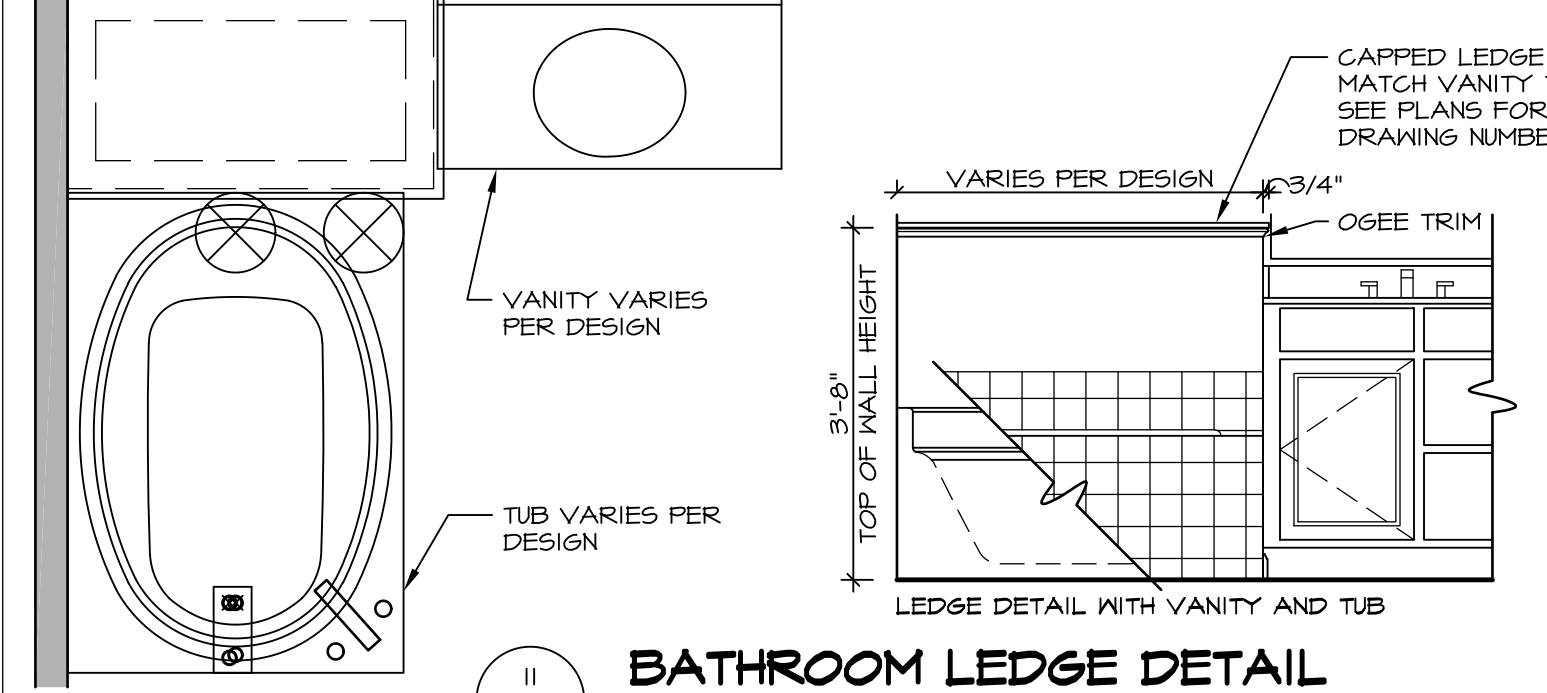
**11 ALTERNATE SHOWER PAN DETAIL**



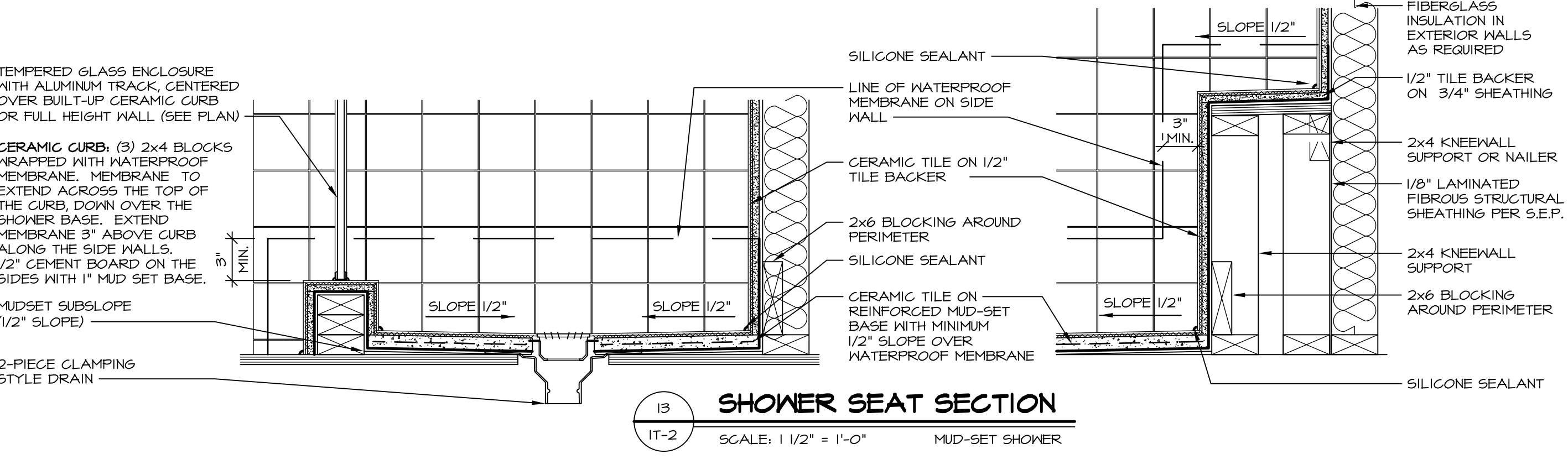
**12 BATHROOM LEDGE DETAIL**  
SCALE: 1/2" = 1'-0"



**13 SILL DETAIL**  
SCALE: 1" = 1'-0"



**14 BATHROOM LEDGE DETAIL**  
SCALE: 1/2" = 1'-0"



**15 SHOWER SEAT SECTION**  
SCALE: 1 1/2" = 1'-0" MUD-SET SHOWER

REVISIONS

REV. NO.	DATE	DESCRIPTION
1	5/1/17	EBP - REVISED DETAIL 1 AND 11 TO REMOVE TUB ACCESS PANEL REF. (DSS #15 5414)
2	9/2/17	EBP - REVISED T-FLY NOTE TO CALL OUT LFS
3	9/2/17	EBP - REVISED NOTE ON DETAIL #1 - REVISED ORDER OF MATERIAL PARA#4934

NVR, Inc., owner, expressly reserves its common law copyright and other property rights in these plans. These plans are not to be copied, reproduced, or otherwise used in any way without the written consent of NVR, Inc. If you are a contractor, you are not to be assigned to any third party, without first obtaining the expressed written consent of NVR, Inc.

**NVR**  
NVR, Inc.  
Architectural Services  
5285 Westchester Blvd, Suite 100  
Frederick, MD 21703

SET NO. NVR  
VERSION  
DRAWN BY  
DATE:  
OPTION

MODEL  
**STANDARD DETAILS**  
DRAWING TITLE  
INTERIOR TRIM DETAILS  
BATH DETAILS  
OPTION DESCRIPTION

SHEET NO.  
**IT-2**

J:\Dwg\NVR\Interior Trim\IT2.dwg 09/27/17 - 9:20 am