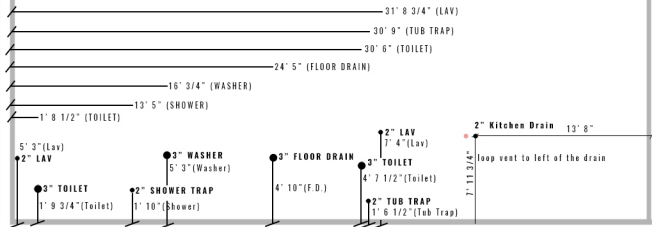


WATER

SEWER

**NOTES:**

1. All measurements are from outside of 4" rim walls
2. Trap showers and tubs - stub up 2" pvc
3. Put tub box on tub , but NOT on the shower !!



WATER

SEWER

28' 5 3/4"  
hold 1' off foundation wall

- BLUE IS COLD WATER
- RED IS HOT WATER

**NOTES:**

1. All measurements are from outside of 4" rim walls
2. Stake 2" pvc sleeve and stub up water lines , strap to foundation wall or tape next to drain stack
3. Stake 4" pvc sleeve and stub up main water lines

HOSE BIB

17' 4" (hose bib)  
tight to foundation

25' 8 1/4" (water mains)

**KITCHEN**

(Loop cold from kitchen back to  
hall bath lav for the ice maker which  
is the extra blue dot at each fixture)



MASER SHOWER

13' 5" (shower water)

MASER LAV

WASHER

5' 6 3/4" (shower water)

HOT WATER MAINS  
4" PVC SLEEVE

HALL BATH LAV

3/4" main water place between both 4" pvc sleeves

COLD WATER MAINS 4" PVC SLEEVE

2' 10" (cold mains)

6' 10" (hot mains)