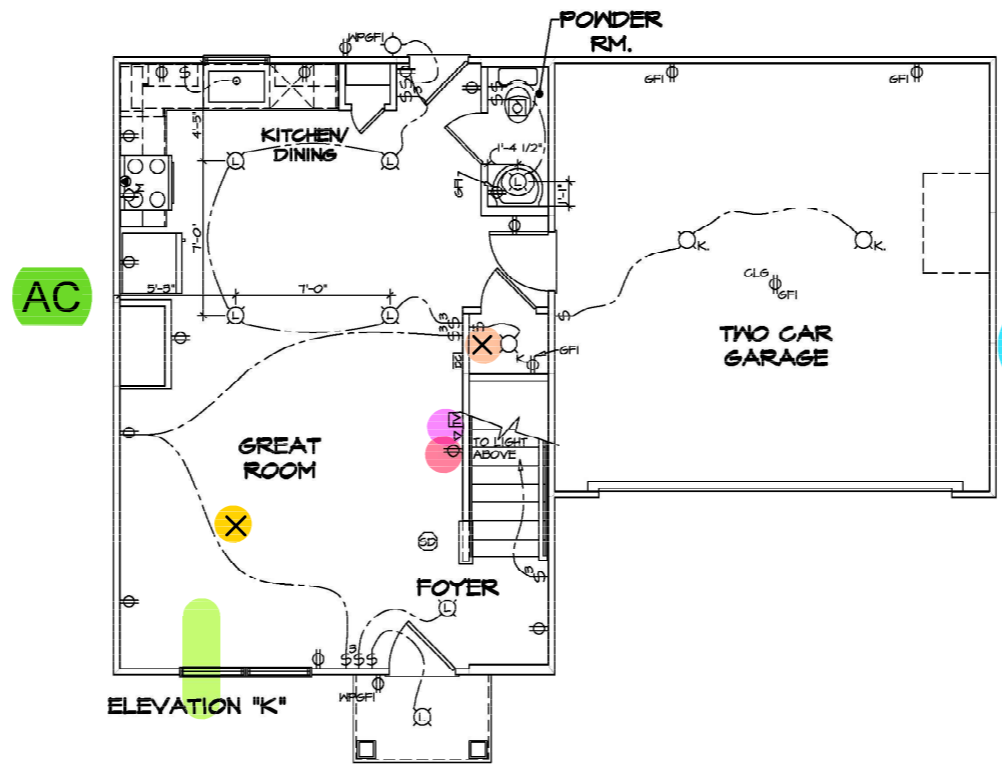


S2-0142

X
 X

- NOTES:**
1. ALL ELECTRICAL PLANS ARE SCHEMATIC ONLY AND NOT INTENDED AS ENGINEERED DRAWINGS. THESE PLANS REPRESENT THE DESIGN INTENT FOR SWITCH AND RECEPTACLE LOCATIONS. ADDITIONAL INFORMATION, IF REQUIRED, SHALL BE PROVIDED BY A LICENSED ELECTRICAL SUBCONTRACTOR OR ENGINEER.
 2. ALL KITCHEN, GARAGES, UNFINISHED BASEMENT, PATIOS AND ALL OUTDOOR RECEPTACLES ARE TO BE GFI PROTECTED.
 3. PROVIDE DUPLEX RECEPTACLE ON DEDICATED CIRCUIT FOR DISHWASHER IN CABINET UNDER THE SINK.
 4. PROVIDE DUPLEX RECEPTACLE FOR GARAGE DISPOSAL IN CABINET UNDER THE SINK.
 5. PROVIDE SWITCH W/ KEYLESS LIGHT IN ATTIC SPACE.
 6. PROVIDE SWITCH W/ KEYLESS LIGHT AND GFI RECEPTACLE WHEN HVAC EQUIPMENT IS IN ATTIC SPACE.
 7. PROVIDE ARC-FAULT CIRCUIT INTERRUPTERS TO ALL ROOMS EXCEPT BATH AND EXTERIOR RECEPTACLES.
 8. WASHER ON LEFT, DRYER ON RIGHT (PER PLAN OR REVERSED).
 9. DRYER RECEPTACLE 110 V/ 6AS OR 220 V/ ELECTRIC.

ELECTRICAL LEGEND	
Ⓢ	SINGLE POLE SWITCH
ⓈⓈ	THREE WAY SWITCH
ⓈⓈⓈ	FOUR WAY SWITCH
ⓈⓈⓈⓈ	DUPLEX RECEPTACLE
ⓈⓈⓈⓈⓈ	DUPLEX RECEPTACLE - BOTTOM HALF SWITCHED
ⓈⓈⓈⓈⓈⓈ	DUPLEX RECEPTACLE - FLOOR MOUNTED
ⓈⓈⓈⓈⓈⓈⓈ	RECEPTACLE - 220V
ⓈⓈⓈⓈⓈⓈⓈⓈ	DUPLEX RECEPTACLE - USB
ⓈⓈⓈⓈⓈⓈⓈⓈⓈ	DUPLEX RECEPTACLE - GROUND FAULT INTERRUPT
ⓈⓈⓈⓈⓈⓈⓈⓈⓈⓈ	DUPLEX RECEPTACLE - HEATER PROOF AND GROUND FAULT INTERRUPT
ⓈⓈⓈⓈⓈⓈⓈⓈⓈⓈⓈ	DUPLEX RECEPTACLE - MICROWAVE
ⓈⓈⓈⓈⓈⓈⓈⓈⓈⓈⓈⓈ	SMOKE DETECTOR - WIRED IN SERIES
ⓈⓈⓈⓈⓈⓈⓈⓈⓈⓈⓈⓈⓈ	CARBON MONOXIDE DETECTOR
ⓈⓈⓈⓈⓈⓈⓈⓈⓈⓈⓈⓈⓈⓈ	EXHAUST FAN MOTOR
ⓈⓈⓈⓈⓈⓈⓈⓈⓈⓈⓈⓈⓈⓈⓈ	EXHAUST FAN MOTOR WITH LIGHT
ⓈⓈⓈⓈⓈⓈⓈⓈⓈⓈⓈⓈⓈⓈⓈⓈ	TELEVISION RECEPTACLE
ⓈⓈⓈⓈⓈⓈⓈⓈⓈⓈⓈⓈⓈⓈⓈⓈⓈ	TELEPHONE RECEPTACLE
ⓈⓈⓈⓈⓈⓈⓈⓈⓈⓈⓈⓈⓈⓈⓈⓈⓈⓈ	DOOR CHIME
ⓈⓈⓈⓈⓈⓈⓈⓈⓈⓈⓈⓈⓈⓈⓈⓈⓈⓈⓈ	LIGHT FIXTURE - WALL MOUNTED
ⓈⓈⓈⓈⓈⓈⓈⓈⓈⓈⓈⓈⓈⓈⓈⓈⓈⓈⓈⓈ	LIGHT FIXTURE - CEILING MOUNTED
ⓈⓈⓈⓈⓈⓈⓈⓈⓈⓈⓈⓈⓈⓈⓈⓈⓈⓈⓈⓈⓈ	LIGHT FIXTURE - RECESSED
ⓈⓈⓈⓈⓈⓈⓈⓈⓈⓈⓈⓈⓈⓈⓈⓈⓈⓈⓈⓈⓈⓈ	LIGHT FIXTURE - RECESSED HEATHER PROOF
ⓈⓈⓈⓈⓈⓈⓈⓈⓈⓈⓈⓈⓈⓈⓈⓈⓈⓈⓈⓈⓈⓈⓈ	LIGHT FIXTURE - CEILING MOUNTED LED
ⓈⓈⓈⓈⓈⓈⓈⓈⓈⓈⓈⓈⓈⓈⓈⓈⓈⓈⓈⓈⓈⓈⓈⓈ	LIGHT FIXTURE - HANGING
ⓈⓈⓈⓈⓈⓈⓈⓈⓈⓈⓈⓈⓈⓈⓈⓈⓈⓈⓈⓈⓈⓈⓈⓈⓈ	LIGHT FIXTURE - PENDANT
ⓈⓈⓈⓈⓈⓈⓈⓈⓈⓈⓈⓈⓈⓈⓈⓈⓈⓈⓈⓈⓈⓈⓈⓈⓈⓈ	LIGHT FIXTURE - FLUORESCENT
ⓈⓈⓈⓈⓈⓈⓈⓈⓈⓈⓈⓈⓈⓈⓈⓈⓈⓈⓈⓈⓈⓈⓈⓈⓈⓈⓈ	LIGHT FIXTURE - UNDER CABINET LIGHT "S" = SMALL "M" = MEDIUM "L" = LARGE
ⓈⓈⓈⓈⓈⓈⓈⓈⓈⓈⓈⓈⓈⓈⓈⓈⓈⓈⓈⓈⓈⓈⓈⓈⓈⓈⓈⓈ	FULLCHAIN LAMPHOLDER
ⓈⓈⓈⓈⓈⓈⓈⓈⓈⓈⓈⓈⓈⓈⓈⓈⓈⓈⓈⓈⓈⓈⓈⓈⓈⓈⓈⓈⓈ	KEYLESS LAMPHOLDER



ELECTRIC METER / PANEL

GAS METER

AC

WATER / SEWER

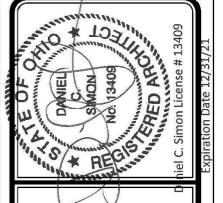
FIRST FLOOR ELECTRICAL PLAN
 SCALE: 1/4" = 1'-0"

WATER METER

(1) CFRI W/ LED LIGHT

(1) CABLE

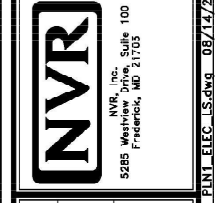
(1) PHONE



STATE OF OHIO
 REGISTERED ARCHITECT
 DANIEL C. SIMON
 No. 13409
 Expiration Date 12/31/21
 Daniel C. Simon License # 13409

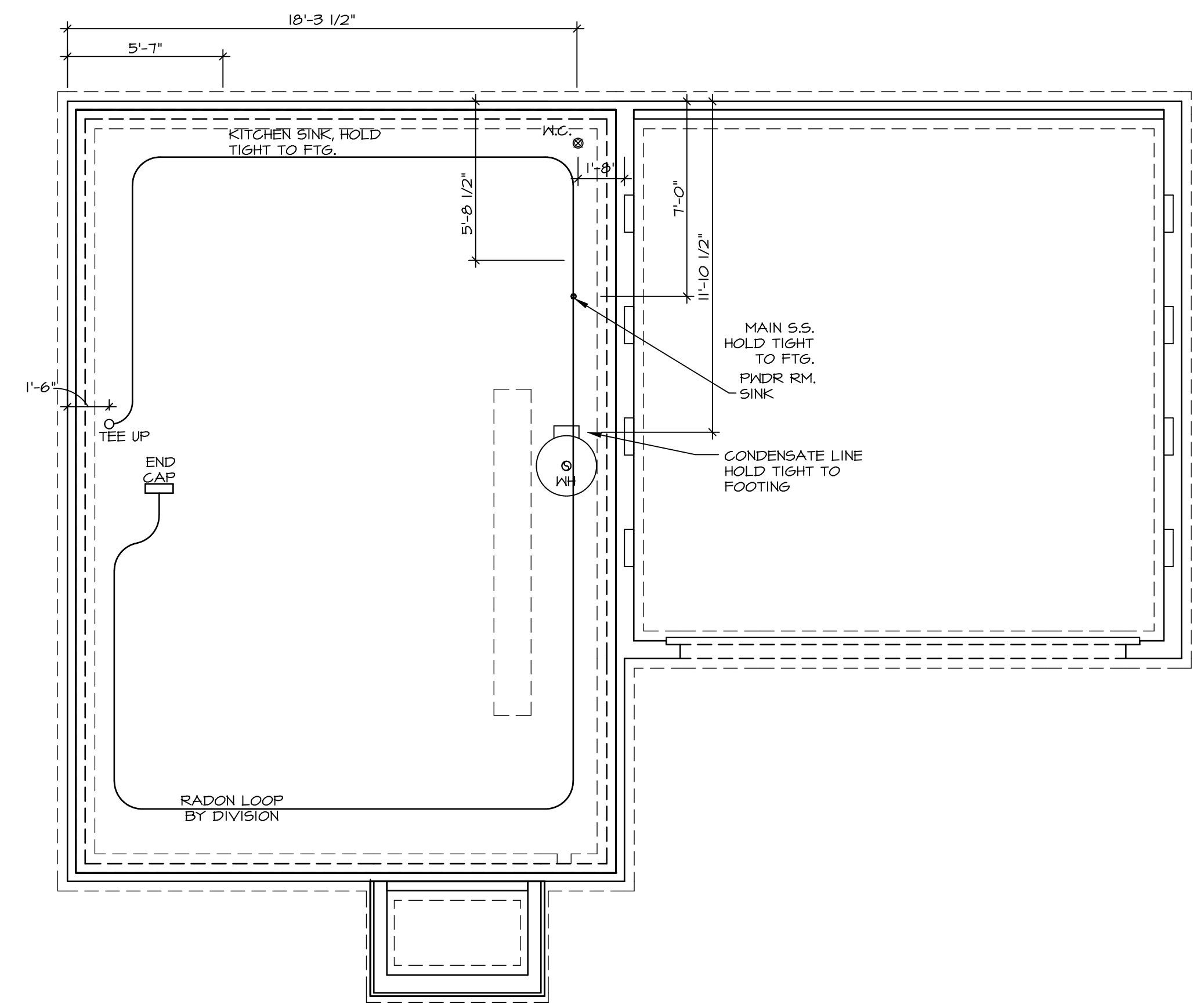
DIV.-COMM-LOT-UNIT	DCY-92-0142
COMM-LOT	
OWNER	SAWYER MILL - SIMPLY RYAN OH2
STREET ADDRESS	0142 8540 WOODCREEK DRIVE
CITY	MIDDLETOWN
STATE	OH
ZIP	45052

NVR, Inc. expressly reserves the copyright and other intellectual property rights in this drawing. These rights shall not be reproduced, stored in a retrieval system, or transmitted in any form or by any means, electronic, mechanical, photocopying, recording, or otherwise, without the prior written consent of NVR, Inc.



MODEL	ASPEN
DRAWING TITLE	FIRST FLOOR ELECTRICAL PLAN
SHEET NO.	E-2
OPTION DESCRIPTION	17
SET NO.	ASPOO
VERSION	01
DRAWN BY	
DATE	
OPTION	

NOTE
 RADON REMEDIATION
 RADON LOOP:
 - (4") PERFORATED HDPE "LOOP"
 - MUST BE PLACED IN STONE BED SLIGHTLY HIGHER THAN ANY INTERIOR DRAINTILE
 - LOOP TO BE SEPARATE FROM ANY DRAINTILE ELEMENTS
 - TO BE CORRUGATED HDPE PIPE
 - SCREENS TO BE INSTALLED THROUGH LOOP AT TEE UP INTO STACK
 STACK REQUIREMENTS:
 - 3" PVC STACK (4" IF BASEMENT IS GREATER THAN 2200 SQFT.)
 - NO PART OF STACK IS TO BE HORIZONTAL (45° ELBOWS PERMITTED AS REQUIRED)
 - PIPE TO BE PHYSICALLY LABELED IN THE FIELD AS "RADON VENT" OR OTHER JURISDICTIONALLY REQUIRED LANGUAGE (ON EVERY LEVEL OF HOUSE)
 - ROOF TERMINATION TO BE IN TOP 1/3 OF ROOF
 - SCREEN OR VENT CAP INSTALLED TO KEEP PESTS OUT OF RADON VENT AT ROOF TERMINATION.

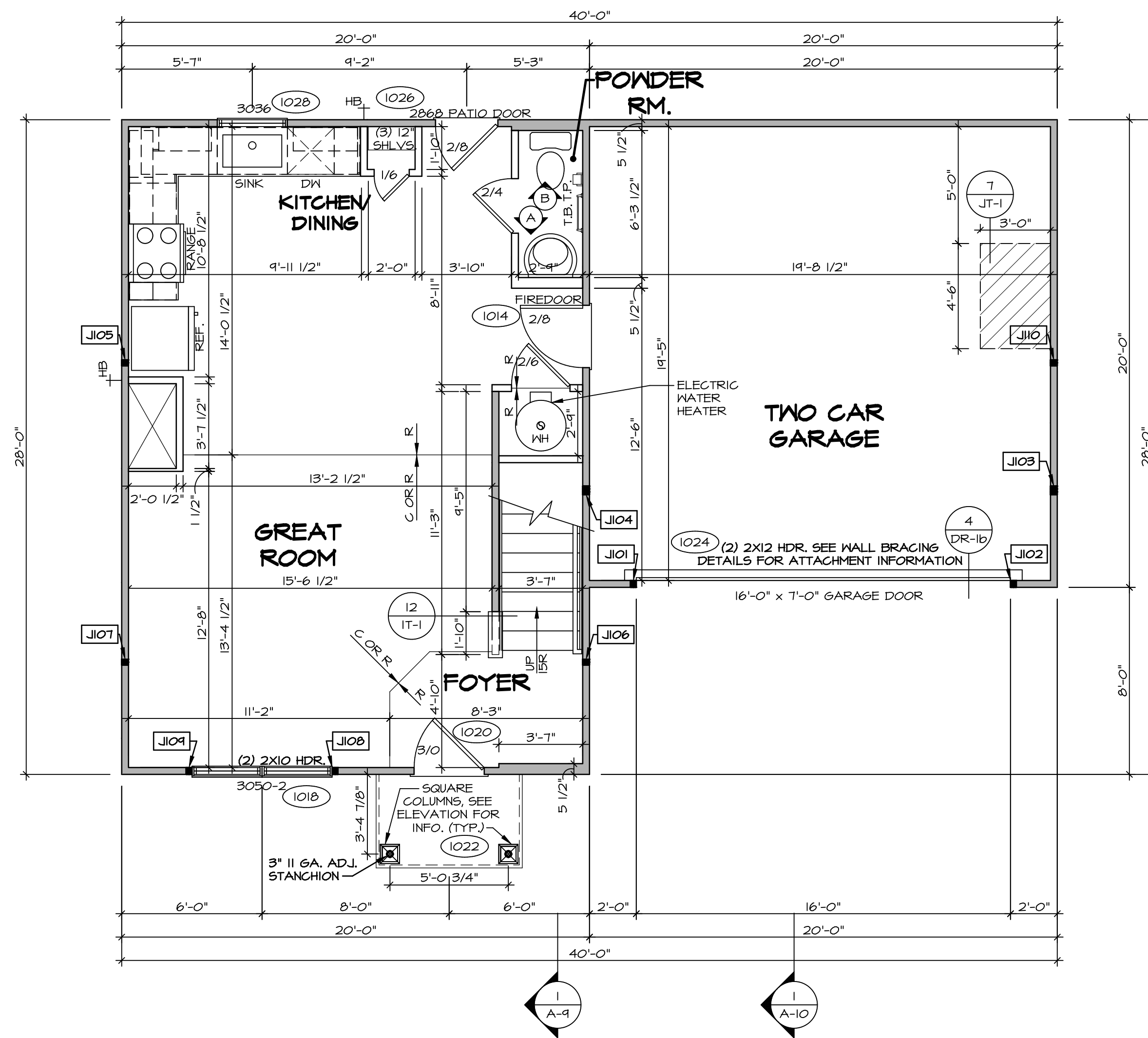


PLUMBING PLAN
 SCALE: 1/4" = 1'-0"

SHEET NO. A-5	MODEL ASPEN	SET NO. ASPOO	OPTION DESCRIPTION 7
	DRAWING TITLE PLUMBING PLAN	VERSION 01	
		DATE:	OPTION

© NVR, Inc. expressly reserves the right to modify these plans without notice. These plans are not to be reproduced, changed or altered in any way without the written consent of NVR, Inc.	
NVR, Inc. Suite 100 5285 Walkersville Road Frederick, MD 21703	

DIV-COMM-LOT-UNIT DCY-S2-0142	
COMM-LOT SANYERS MILL - SIMPLY RYAN - 0142	APT. NO. -----
STREET ADDRESS 5840 WOODCREEK DRIVE	STATE OH
CITY MIDDLETOWN	ZIP 45042



FIRST FLOOR PLAN
SCALE: 1/4" = 1'-0"

LEGEND

- BEARING WALL
- NON BEARING WALL
- INDICATES BEARING FROM POINT-LOAD ABOVE
- JACKS
- BEAM/HEADER
- PAD FOOTING
- STEEL COLUMN
- TRUSS TIE DOWN
- PORTAL FRAME
- JOIST/TRUSS
- LVL
- ENGINEERING PAGE NUMBER

SEE FC DETAILS FOR FRAMING CONNECTORS

- FLOOR PLAN NOTES**
1. ALL HEADERS ARE (2) 2x6 w/ 2x4 WALLS OR (3) 2x6 w/ 2x6 WALLS, UNLESS OTHERWISE NOTED.
 2. ALL HEADERS TO HAVE (1) 2x4 OR 2x6 JACK AND KING STUD EACH END, UNLESS OTHERWISE NOTED. MULTI-OPENING HEADERS TO HAVE (2) JACKS AT INTERMEDIATE BEARINGS, UNLESS OTHERWISE NOTED. NO ADDITIONAL FLOOR SYSTEM BLOCKING OR CONTINUOUS LOAD PATH JACKS ARE REQUIRED UNLESS OTHERWISE NOTED.
 3. ALL EXTERIOR WALLS TO BE 4" w/ OSB OR 3 1/2" w/ LAMINATED FIBROUS STRUCTURAL SHEATHING, ALL INTERIOR WALLS TO BE 3 1/2", UNLESS OTHERWISE NOTED.
 4. HATCHED AREAS INDICATE DROPPED CEILINGS. ALL DROPPED CEILINGS ARE 12" UNLESS OTHERWISE NOTED. SEE 'BRACED WALL PANEL DETAIL SHEET' FOR SPECIAL WALL FRAMING LOCATIONS AND HEADER SIZES, IF APPLICABLE.
 5. SEE STANDARD DETAIL CATEGORY '11' SHEET(S) FOR INTERIOR TRIM DETAILS.
 6. SEE ARCHITECTURAL DETAIL SHEET 'AD' FOR HOUSE SPECIFIC INTERIOR TRIM OPTION TABLE.
 7. ALL WINDOWS HAVE 1"-0 1/2" HEADER HEIGHT UNLESS OTHERWISE NOTED.
 8. ALL HEADERS IN NON-BEARING WALLS SHALL BE A SINGLE FLAT 2x4 OR 2x6 ATTACHED TO CRIPPLES ABOVE, UNLESS OTHERWISE NOTED.
 9. TANKED WATER HEATER SHOWN AS BASE CONDITION, OPTIONAL TANKLESS WATER HEATER IS AVAILABLE IN LIEU OF TANKED WATER HEATER.

- GYPSUM NOTES**
- AT GARAGE:
GYPSUM BOARD AT COMMON WALLS, CEILING, BEAM WRAPS AND SUPPORTS PER STANDARD DETAIL FA-1(b) FIRE ASSEMBLIES OR AS REQUIRED BY LOCAL CODE.
- AT STAIRS:
1/2" GYPSUM BOARD AT UNDERSIDE OF STAIRS AND WALLS IN CLOSET

FIRST FLOOR JACK SCHEDULE

IDENTIFIER	DESCRIPTION	ENG. NUM.	REMARKS
J101	JACK - (2) 2X4 SFF STUD GRADE	1024	
J102	JACK - (2) 2X4 SFF STUD GRADE	1024	
J103	JACK - (3) 2X4 SFF#1	1016	
J104	JACK - (3) 2X4 SFF#1	1016	
J105	JACK - (2) 2X4 SFF STUD GRADE	1012	
J106	JACK - (2) 2X4 SFF STUD GRADE	1012	
J107	JACK - (2) 2X4 SFF STUD GRADE	1012	
J108	JACK - (2) 2X4 SFF STUD GRADE	1018	
J109	JACK - (2) 2X4 SFF STUD GRADE	1018	
J110	JACK - (2) 2X4 SFF STUD GRADE	1012	

DIV-COMM-LOT-UNIT
DCY-S2-0142

COMM-LOT
SANTYERS MILL - SIMPLY RYAN - 0142

STREET ADDRESS
5840 WOODCREEK DRIVE

CITY
MIDDLETOWN

STATE
OH

ZIP
45042

APT. NO.

© NVR, Inc. expressly reserves the right to modify these plans without notice. These plans are not to be reproduced, changed or copied in any way without the written consent of NVR, Inc.

NVR
NVR, Inc. Suite 100
Frederick, MD 21703

5285 Washburne Rd.
Frederick, MD 21703

SET NO. ASPOO
VERSION 01
DRAWN BY
DATE:
OPTION

MODEL
ASPEN
DRAWING TITLE
FIRST FLOOR PLAN
OPTION DESCRIPTION

SHEET NO.
A-7

9

C:\NVR\Solves\ASPEN_ASPOO_01\DCY-S2-0142\211127A\Sheet\Lot_Specific\9 A-7 PLAN_L5.dwg 09/17/20 - 3:20 am

LEGEND	
	BEARING WALL
	NON BEARING WALL
	INDICATES BEARING FROM POINT-LOAD ABOVE
	JACKS
	BEAM/HEADER
	PAD FOOTING
	STEEL COLUMN
	TRUSS TIE DOWN
	PORTAL FRAME
	JOIST/TRUSS
	LVL
	ENGINEERING PAGE NUMBER

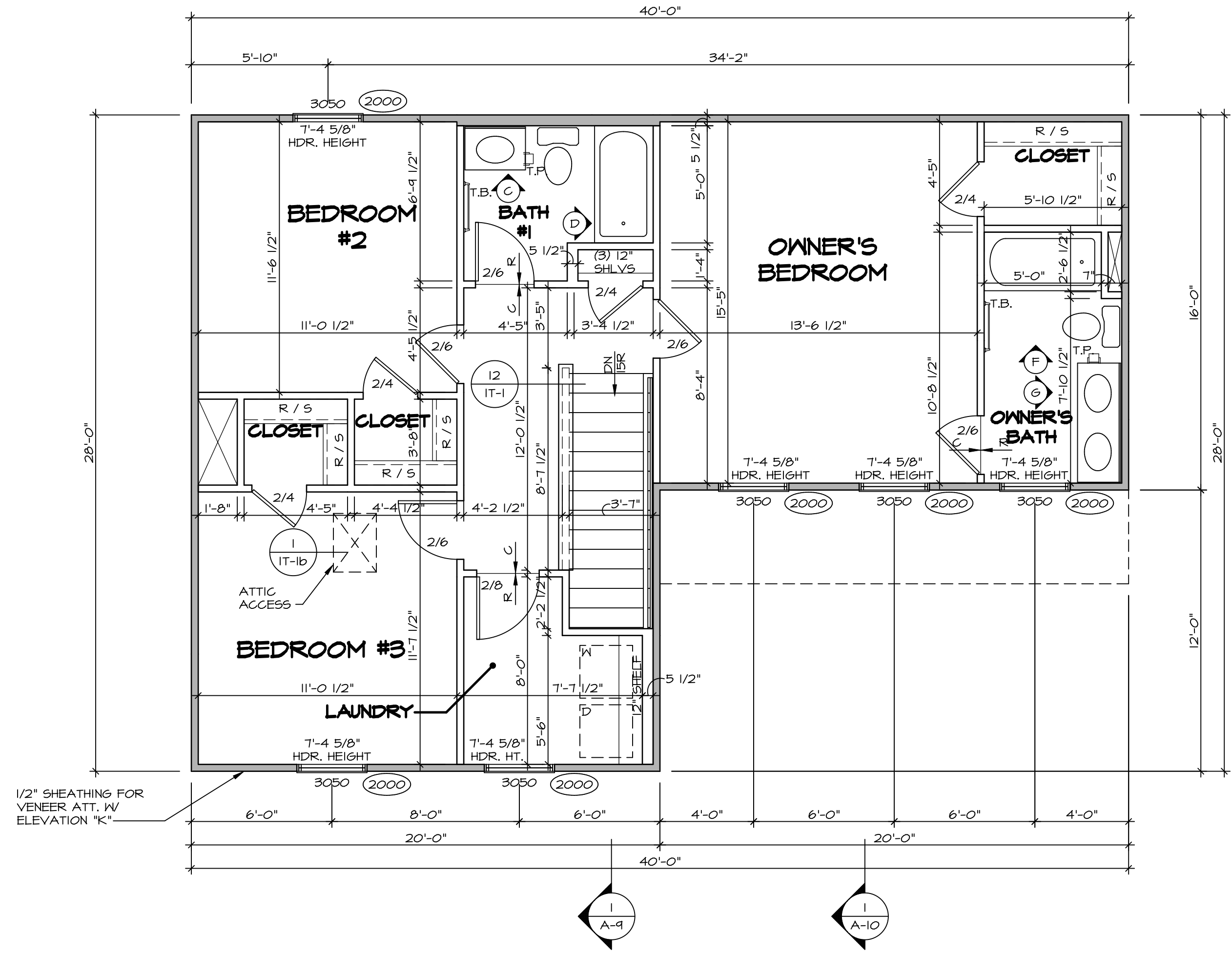
SEE FC DETAILS FOR FRAMING CONNECTORS

FLOOR PLAN NOTES

- ALL HEADERS ARE (2) 2x6 w/ 2x4 WALLS OR (3) 2x6 w/ 2x6 WALLS, UNLESS OTHERWISE NOTED.
- ALL HEADERS TO HAVE (1) 2x4 OR 2x6 JACK AND KING STUD EACH END, UNLESS OTHERWISE NOTED. MULTI-OPENING HEADERS TO HAVE (2) JACKS AT INTERMEDIATE BEARINGS, UNLESS OTHERWISE NOTED. NO ADDITIONAL FLOOR SYSTEM BLOCKING OR CONTINUOUS LOAD PATH JACKS ARE REQUIRED UNLESS OTHERWISE NOTED.
- ALL EXTERIOR WALLS TO BE 4" w/ OSB OR 3 1/2" w/ LAMINATED FIBROUS STRUCTURAL SHEATHING, ALL INTERIOR WALLS TO BE 3 1/2", UNLESS OTHERWISE NOTED. HATCHED AREAS INDICATE DROPPED CEILING. ALL DROPPED CEILING ARE 12" UNLESS OTHERWISE NOTED. SEE "BRACED WALL PANEL DETAIL SHEET" FOR SPECIAL WALL FRAMING LOCATIONS AND HEADER SIZES, IF APPLICABLE.
- SEE STANDARD DETAIL CATEGORY "11" SHEET(S) FOR INTERIOR TRIM DETAILS.
- SEE ARCHITECTURAL DETAIL SHEET "AD" FOR HOUSE SPECIFIC INTERIOR TRIM OPTION TABLE.
- ALL WINDOWS HAVE 1"-0 1/2" HEADER HEIGHT UNLESS OTHERWISE NOTED.
- ALL HEADERS IN NON-BEARING WALLS SHALL BE A SINGLE FLAT 2x4 OR 2x6 ATTACHED TO CRIPPLES ABOVE, UNLESS OTHERWISE NOTED.
- TANKED WATER HEATER SHOWN AS BASE CONDITION, OPTIONAL TANKLESS WATER HEATER IS AVAILABLE IN LIEU OF TANKED WATER HEATER.

GYPSUM NOTES

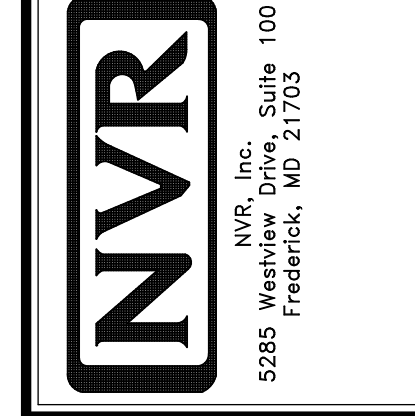
- AT GARAGE:
GYPSUM BOARD AT COMMON WALLS, CEILING, BEAM WRAPS AND SUPPORTS PER STANDARD DETAIL FA-1(b) FIRE ASSEMBLIES OR AS REQUIRED BY LOCAL CODE.
- AT STAIRS:
1/2" GYPSUM BOARD AT UNDERSIDE OF STAIRS AND WALLS IN CLOSET



SECOND FLOOR PLAN
SCALE: 1/4" = 1'-0"

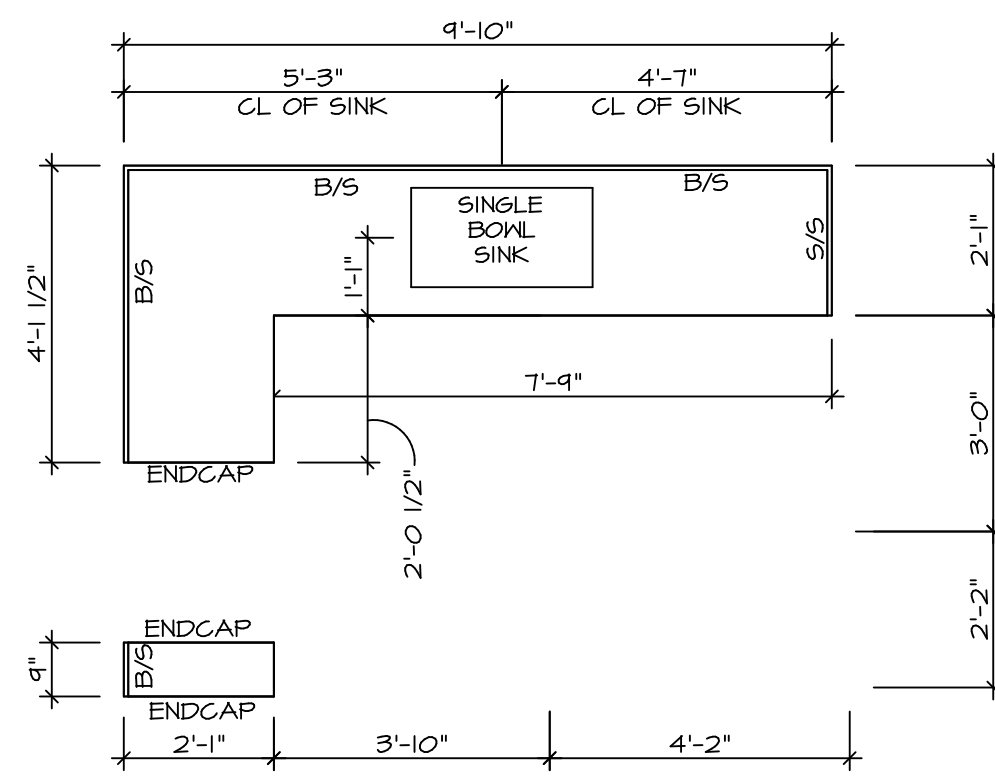
DIV-COMM-LOT-UNIT
DCY-S2-0142
COMM-LOT
SAWYERS MILL - SIMPLY RYAN - 0142
STREET ADDRESS
5840 WOODCREEK DRIVE
CITY MIDDLETOWN STATE OH ZIP 45042

© NVR, Inc. expressly reserves the right to modify or change these plans without notice. These plans are not to be reproduced, changed or copied in any way without the written consent of NVR, Inc.

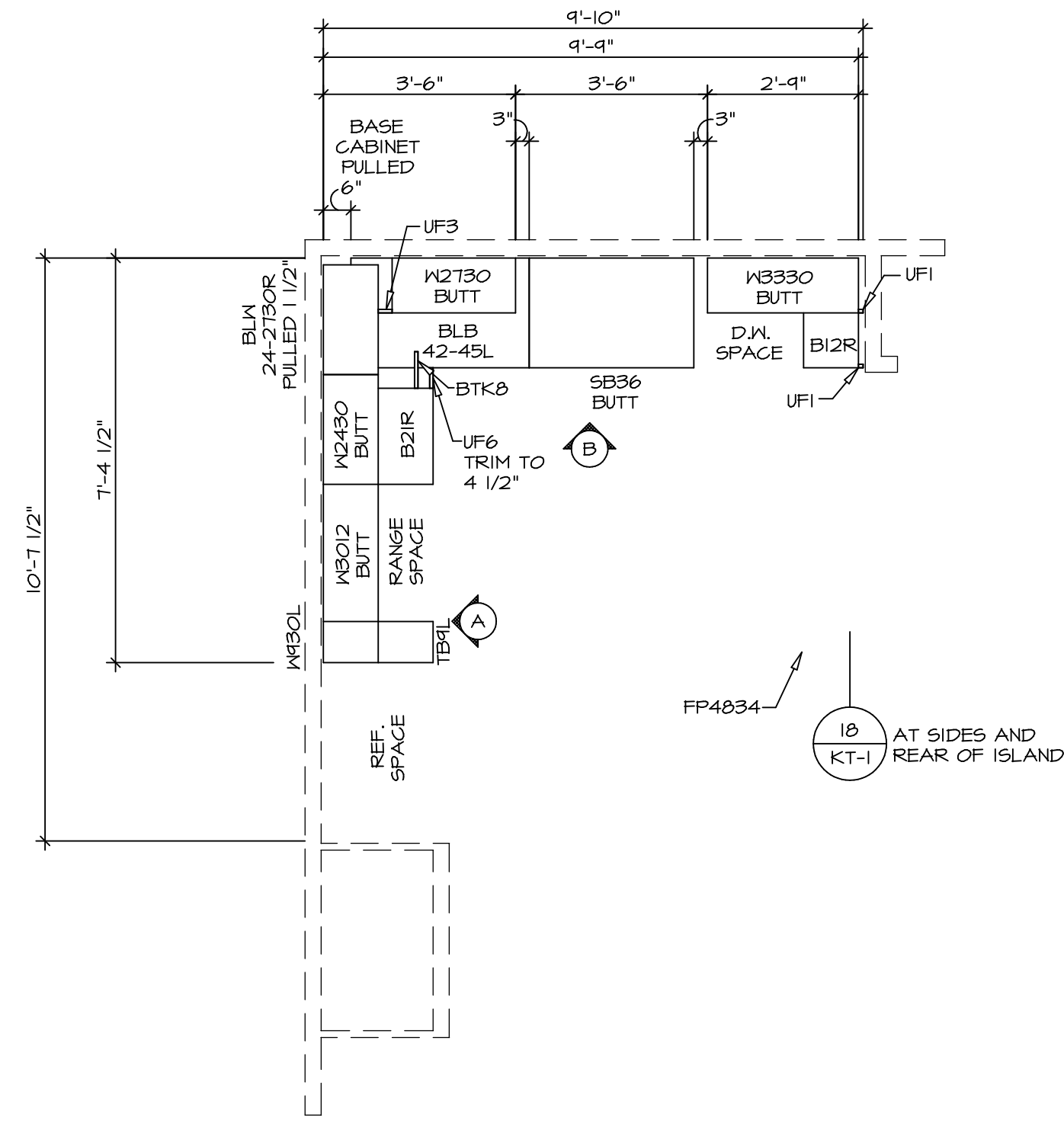


MODEL ASPEN	SET NO. ASPOO
DRAWING TITLE SECOND FLOOR PLAN	VERSION 01
OPTION DESCRIPTION	DRAWN BY
	DATE:
	OPTION

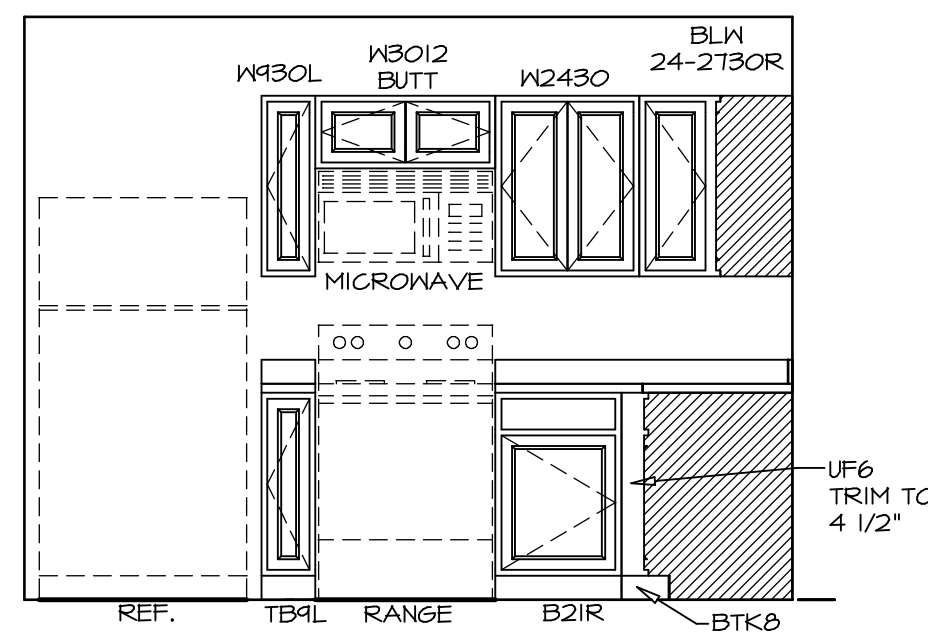
SHEET NO. **A-8**
10



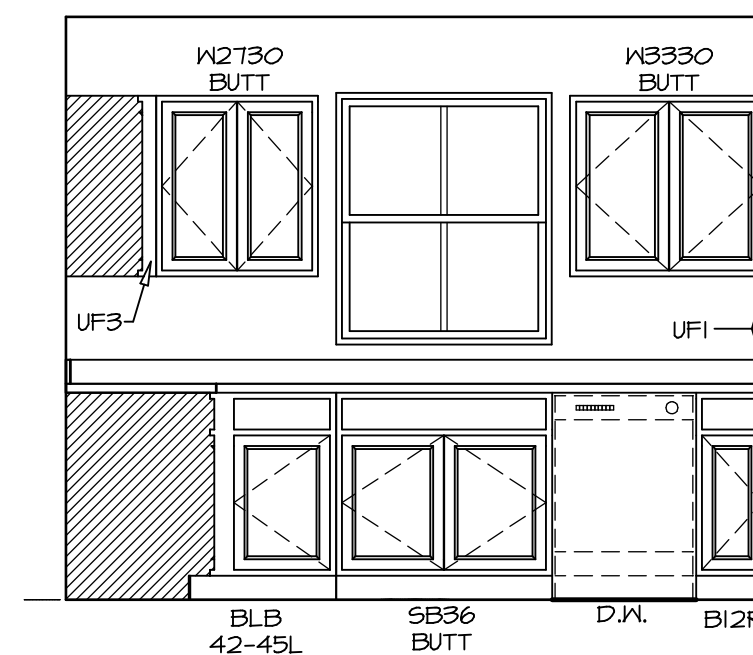
2 **KITCHEN COUNTERTOP PLAN KC - 3639**
 SCALE: 3/8" = 1'-0"



1 **KITCHEN CABINET PLAN KC - 3639**
 SCALE: 3/8" = 1'-0"



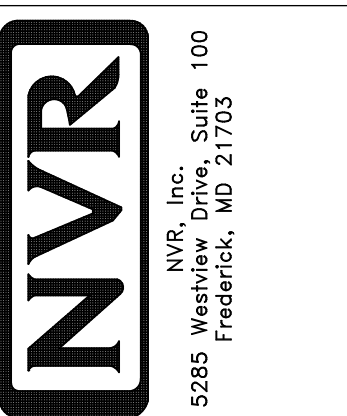
A **ELEVATION**
 SCALE: 3/8" = 1'-0"



B **ELEVATION**
 SCALE: 3/8" = 1'-0"

NOTES:
 1. CABINET LAYOUT(S) ARE BASED ON FINISHED DIMENSIONS TO DRYWALL.
 2. IF KITCHEN PLANS/ELEVATIONS CALL-OUT STANDARD MOULDING, REFER TO STANDARD DETAIL (11KT-1) FOR REPLACEMENT BASED ON CABINET STYLE.
 3. ALL (UF*) FILLERS ARE TO BE "TRIM TO FIT".

MODEL ASPEN	SET NO. ASPOO
DRAWING TITLE KITCHEN PLAN	VERSION 01
OPTION DESCRIPTION	DRAWN BY
	DATE:
	OPTION



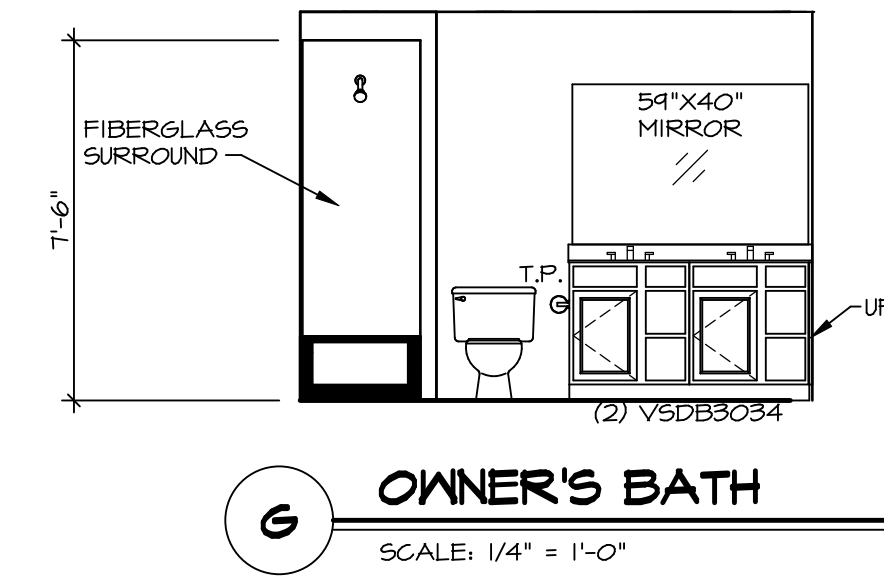
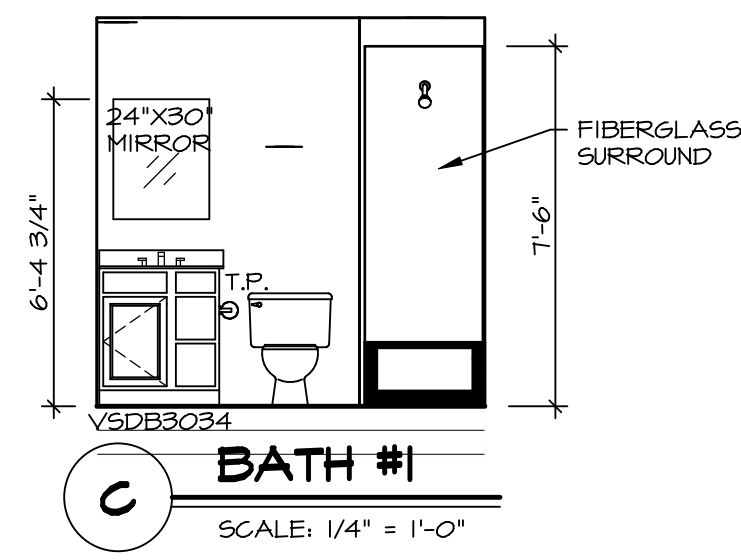
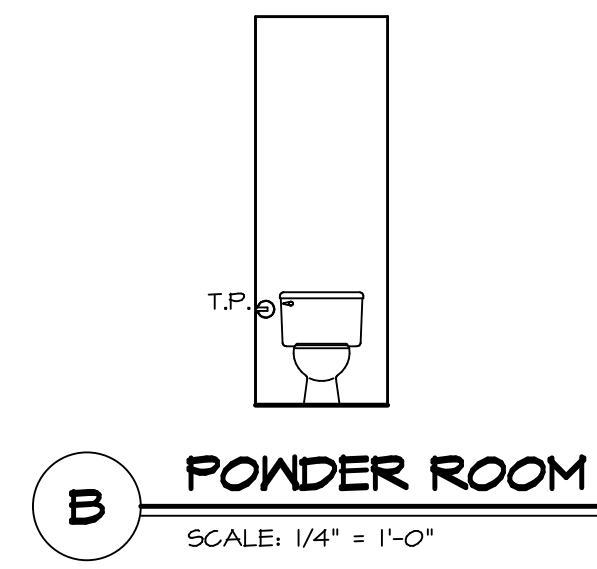
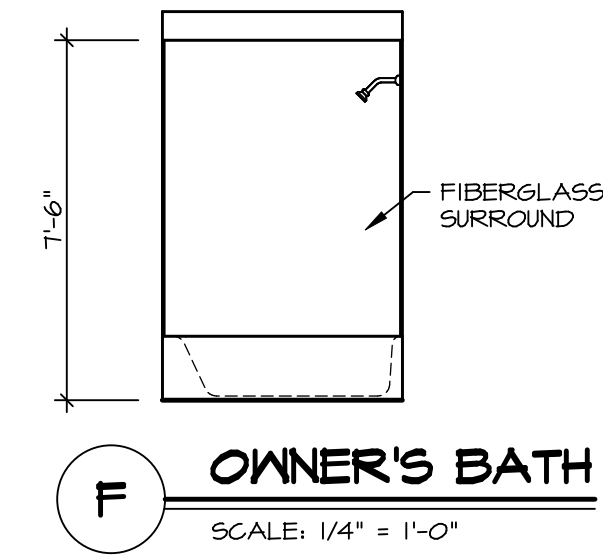
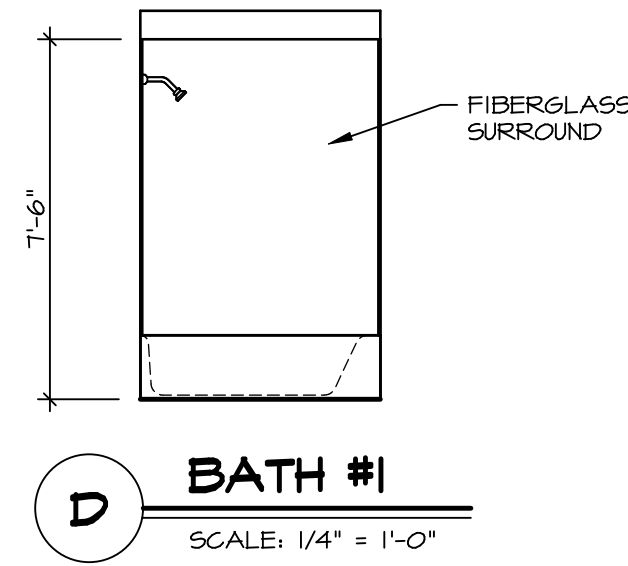
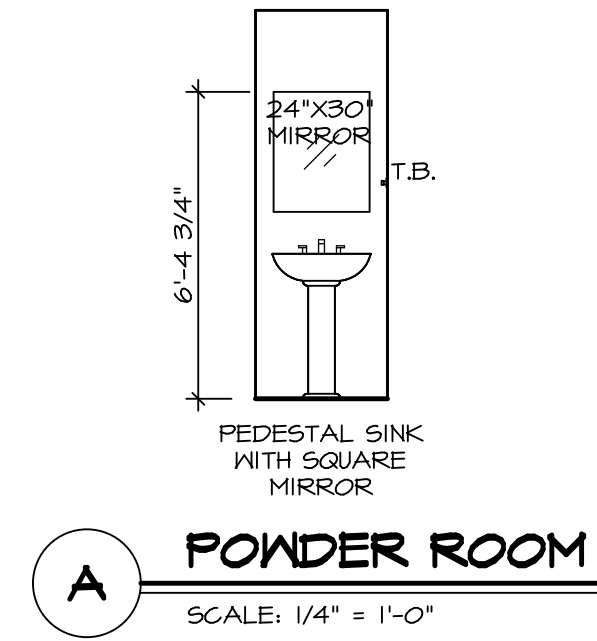
© NVR, Inc. expressly reserves the right to modify or change the information contained in these plans. These plans are not to be reproduced, changed or altered in any way without the prior written consent of NVR, Inc.

DIV-COMM-LOT-UNIT DCY-S2-0142
COMM-LOT SAWYERS MILL - SIMPLY RYAN - 0142
STREET ADDRESS 5840 WOODCREEK DRIVE
CITY MIDDLETOWN
STATE OH
ZIP 45042

SHEET NO. A-12
DATE
OPTION

NOTES:

1. TEMPERED GLASS SHOWER ENCLOSURE WITH SWING DOORS OR OPTIONAL SLIDING DOOR BY DIVISION
2. TUB ACCESS PANELS PROVIDED AS NEEDED, ALL MATERIALS BY DIVISION
3. REFER TO SHEET IT-2 FOR TUB AND SHOWER DETAILS
4. ALL V5DB24-42 DRAWERS TO BE SET ON RIGHT HAND.
5. ALL BATH ELEVATIONS ARE SHOWN PER PLAN.



© NVR, Inc. expressly reserves the right to modify these plans without notice. These plans are not to be reproduced, changed or altered in any way without the written consent of NVR, Inc.



MODEL	ASPEN
DRAWING TITLE	BATH ELEVATIONS
OPTION DESCRIPTION	

SHEET NO. **A-13**
15

SET NO.	ASPOO
VERSION	01
DRAWN BY	
DATE:	
OPTION	

DIV-COMM-LOT-UNIT	DCY-S2-0142
COMM-LOT	
OWNER	SMYTERS MILL - SIMPLY RYAN - 0142
STREET ADDRESS	5840 WOODCREEK DRIVE
CITY	MIDDLETOWN
STATE	OH
ZIP	45042