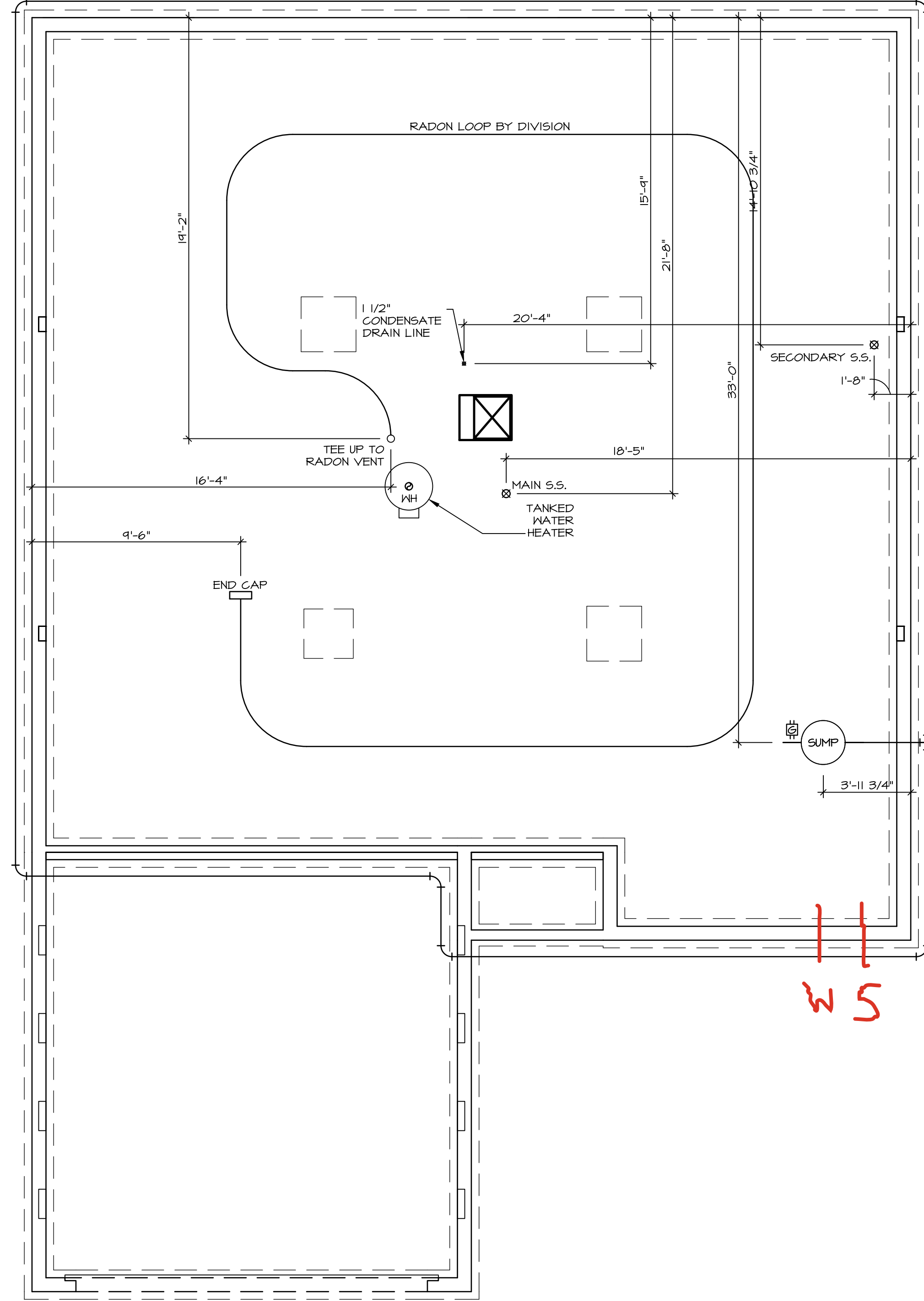


S2 464  
5903 CRESTING DRIVE  
MIDDLETOWN, OH 45042

1 Story Basement  
2 hose bibs - no valves required  
Vent Kitchen  
ice maker  
1 tub  
1 shower  
WATER HEATER ELECTRIC 40 GALLON  
Inside Water Meter setup

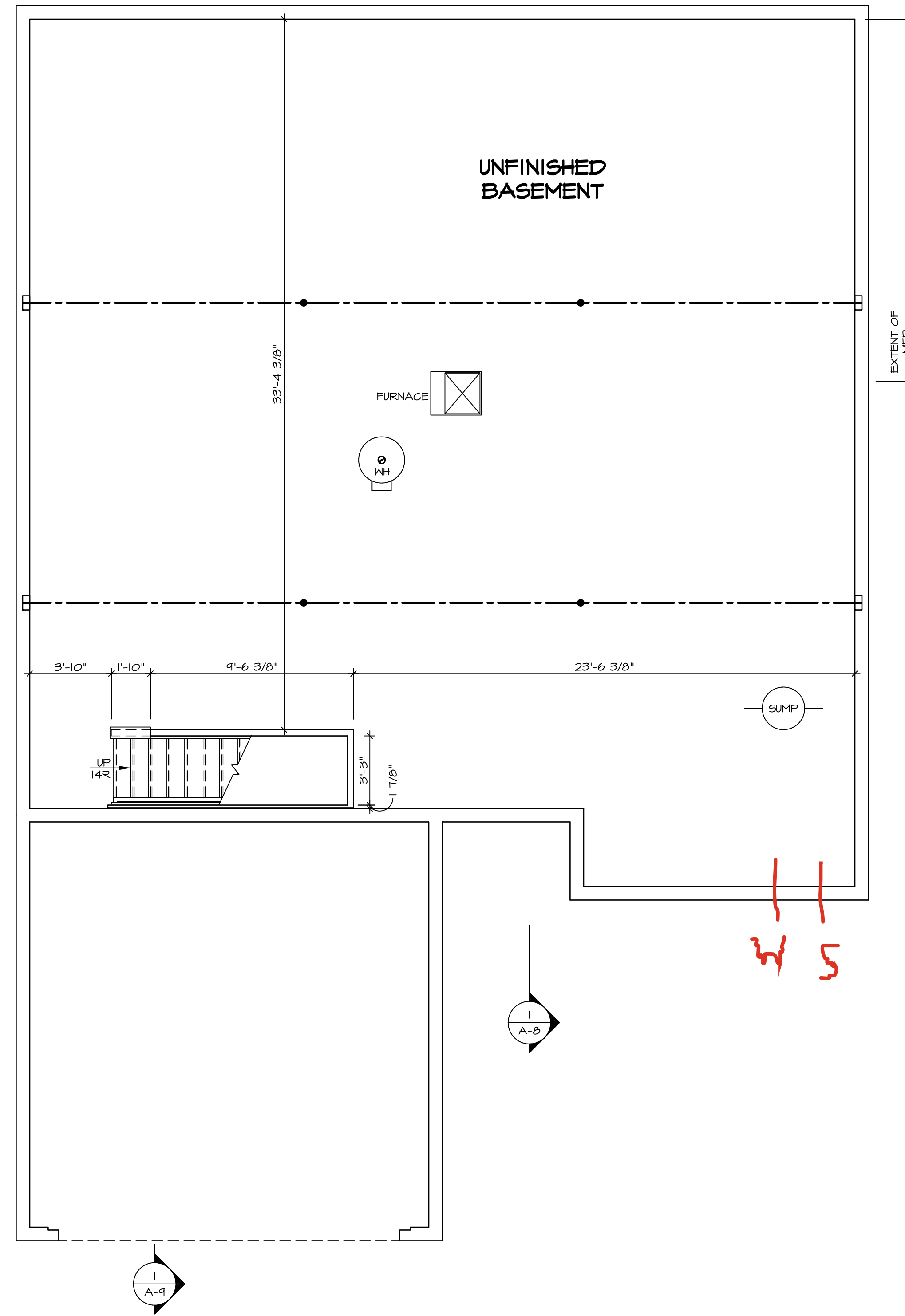
Gas Furnace and Range



**NOTE**  
 RADON REMEDIATION  
 RADON LOOP:  
 - (4") PERFORATED HDPE "LOOP"  
 - MUST BE PLACED IN STONE BED SLIGHTLY HIGHER THAN ANY INTERIOR DRAINTILE  
 - LOOP TO BE SEPARATE FROM ANY DRAINTILE ELEMENTS  
 - TO BE CORRUGATED HDPE PIPE  
 - SCREWS TO BE INSTALLED THROUGH LOOP AT TEE UP INTO STACK  
 STACK REQUIREMENTS:  
 - 3" PVC STACK (4" IF BASEMENT IS GREATER THAN 2200 SQFT.)  
 - NO PART OF STACK IS TO BE HORIZONTAL (45° ELBOWS PERMITTED AS REQUIRED)  
 - PIPE TO BE PHYSICALLY LABELED IN THE FIELD AS "RADON VENT" OR OTHER JURISDICTIONALLY REQUIRED LANGUAGE (ON EVERY LEVEL OF HOUSE)  
 - ROOF TERMINATION TO BE IN TOP 1/3 OF ROOF  
 - SCREEN OR VENT CAP INSTALLED TO KEEP PESTS OUT OF RADON VENT AT ROOF TERMINATION.

**PLUMBING PLAN**  
 SCALE: 1/4" = 1'-0"

SHEET NO. <b>A-5</b>	MODEL <b>TUPELO</b>	SET NO. TUPOO	NVR NVR, Inc., Suite 100 5285 Westchase Frederick, MD 21703	DIV-COMM-LOT-UNIT <b>DCY-S2-0464</b>
	DRAWING TITLE <b>PLUMBING</b>	VERSION 01		
OPTION DESCRIPTION <b>10</b>	RELEASE NO. ----	DRAWN BY HNP	STREET ADDRESS <b>9903 CRESTING DRIVE</b>	CITY <b>MIDDLETOWN</b>
	DATE: 02/20/20	OPTION	STATE <b>OH</b>	ZIP <b>45042</b>



**LEGEND**

	BEARING WALL
	INDICATES BEARING FROM POINT-LOAD ABOVE JACKS
	BEAM/HEADER
	FOOTING/THICKENED SLAB
	STEEL COLUMN
	TRUSS TIE DOWN
	PORTAL FRAME
	JOIST/TRUSS
	LVL
	ENGINEERING PAGE NUMBER

-SEE FA DETAILS FOR FIRE ASSEMBLIES  
-SEE FC DETAILS FOR FRAMING CONNECTORS

**FLOOR PLAN NOTES** RYAN

- ALL HEADERS ARE (2) 2x6 w/ 2x4 WALLS OR (3) 2x6 w/ 2x6 WALLS, UNLESS OTHERWISE NOTED.
- ALL HEADERS TO HAVE (1) 2x4 OR 2x6 JACK AND KING STUD EACH END, UNLESS OTHERWISE NOTED. MULTI-OPENING HEADERS TO HAVE (2) JACKS AT INTERMEDIATE BEARINGS, UNLESS OTHERWISE NOTED. NO ADDITIONAL FLOOR SYSTEM BLOCKING OR CONTINUOUS LOAD PATH JACKS ARE REQUIRED UNLESS OTHERWISE NOTED.
- ALL EXTERIOR WALLS TO BE 4" w/ OSB OR 3 1/2" w/ LAMINATED FIBROUS STRUCTURAL SHEATHING, ALL INTERIOR WALLS TO BE 3 1/2", UNLESS OTHERWISE NOTED. HATCHED AREAS INDICATE DROPPED CEILINGS. ALL DROPPED CEILINGS ARE 12" UNLESS OTHERWISE NOTED. SEE ARCHITECTURAL DETAIL 8/IT-1B FOR 3/4" FIRE STOPPING AT BULKHEAD / CEILING PANELS.
- SEE "BRACED WALL PANEL DETAIL SHEET" FOR SPECIAL WALL FRAMING LOCATIONS AND HEADER SIZES, IF APPLICABLE.
- SEE STANDARD DETAIL CATEGORY "IT" SHEET(S) FOR INTERIOR TRIM DETAILS.
- SEE ARCHITECTURAL DETAIL SHEET "AD" FOR HOUSE SPECIFIC INTERIOR TRIM OPTION TABLE.
- ALL HEADERS IN NON-BEARING WALLS SHALL BE A SINGLE FLAT 2x4 OR 2x6 ATTACHED TO CRIPPLES ABOVE, UNLESS OTHERWISE NOTED.
- TANKED WATER HEATER SHOWN AS BASE CONDITION, OPTIONAL TANKLESS WATER HEATER IS AVAILABLE IN LIEU OF TANKED WATER HEATER.
- INTERIOR HEADER HEIGHT TO BE 6'-11" w/ 8'-0" CEILINGS AND 7'-11" w/ 9'-0" CEILINGS UNLESS OTHERWISE NOTED.
- BASEMENT FINISH DIMENSIONS ASSUME A 1/2" GAP BETWEEN FRAME WALL AND CONCRETE WALL.
- ALL INTERIOR BEARING WALLS SHALL HAVE GYPSUM APPLIED TO AT LEAST ONE SIDE OR HAVE MID-HEIGHT BLOCKING INSTALLED.

**GYPSUM NOTES**

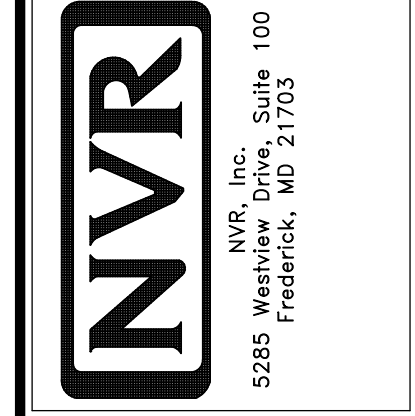
**AT GARAGE:**  
GYPSUM BOARD AT COMMON WALLS, CEILINGS, BEAM WRAPS AND SUPPORTS PER STANDARD DETAIL FA-1(b) FIRE ASSEMBLIES OR AS REQUIRED BY LOCAL CODE.

**AT STAIRS:**  
1/2" GYPSUM BOARD AT UNDERSIDE OF STAIRS AND WALLS IN CLOSET.

**BASEMENT FLOOR PLAN**  
SCALE: 1/4" = 1'-0"

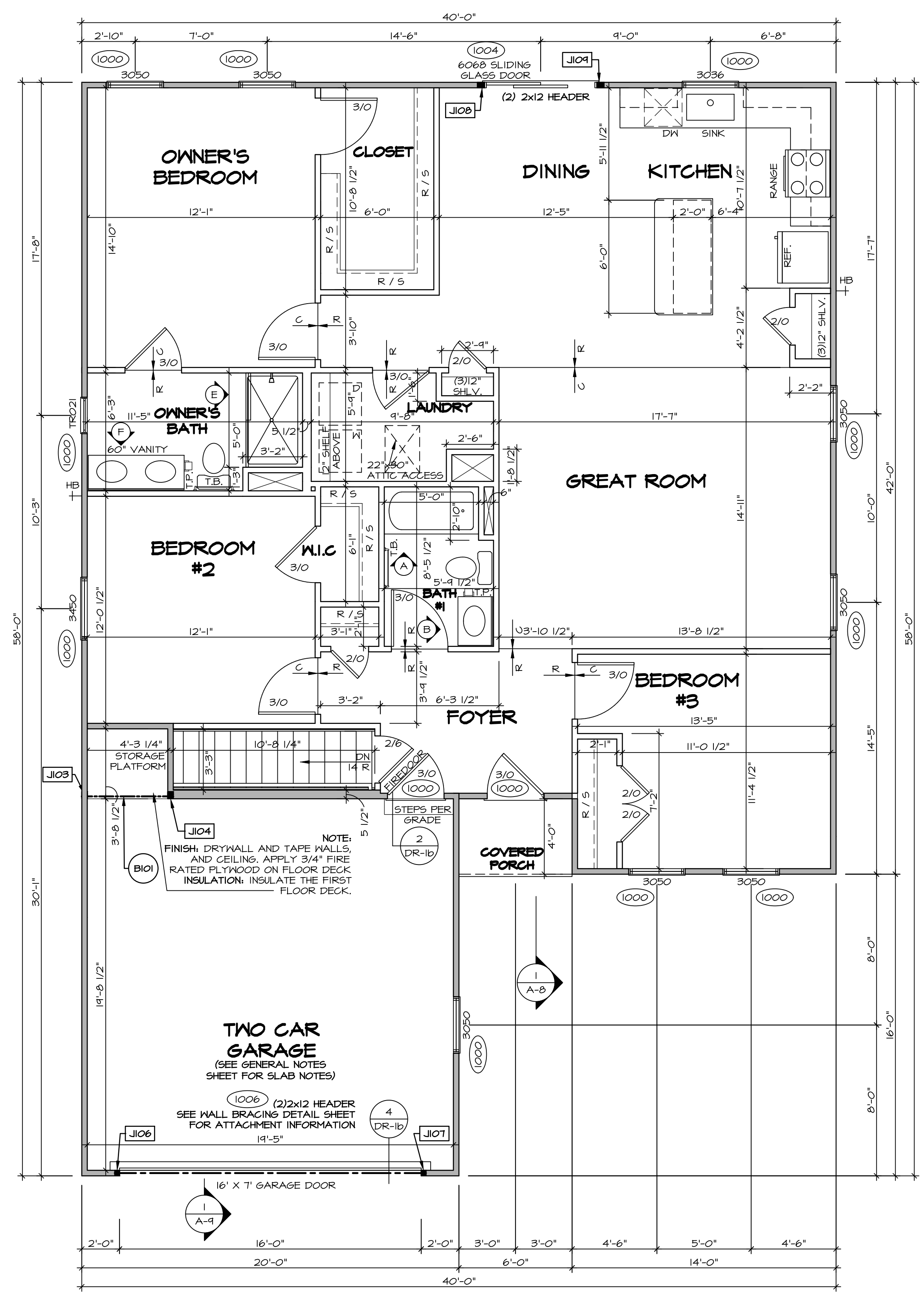
DIV-COMM-LOT-UNIT  
**DCY-S2-0464**  
COM-LOT  
STREET ADDRESS  
SAIYERS MILL - SIMPLY RYAN - 0464  
CITY  
MIDDLETOWN  
STATE  
OH  
ZIP  
45042

NVR, Inc., expressly reserves its copyright and other property rights in these plans. These plans are not to be reproduced, stored in a retrieval system, or transmitted in any form or by any means, electronic, mechanical, photocopying, recording, or otherwise, without the prior written consent of NVR, Inc.



SET NO. TUPOO  
VERSION 01  
RELEASE NO. ----  
DRAWN BY HNT  
DATE: 02/21/20  
OPTION

SHEET NO. <b>A-6</b>	MODEL TUPELO	DRAWING TITLE BASEMENT FLOOR PLAN
OPTION DESCRIPTION 		



**FIRST FLOOR PLAN**  
SCALE: 1/4" = 1'-0"

FIRST FLOOR JACK SCHEDULE			
IDENTIFIER	DESCRIPTION	ENG. NUM.	REMARKS
J103	JACK - (3) 2X4 SPF STUD GRADE	1008	
J104	JACK - (3) 2X4 SPF STUD GRADE	1008	
J106	JACK - (2) 2X4 SPF STUD GRADE	1006	
J107	JACK - (2) 2X4 SPF STUD GRADE	1006	
J108	JACK - (3) 2X4 SPF STUD GRADE	1004	
J109	JACK - (3) 2X4 SPF STUD GRADE	1004	

FIELD INSTALLED FIRST FLOOR BEAM/HEADER SCHEDULE				
IDENTIFIER	DESCRIPTION	LENGTH	ENG. NUM.	REMARKS
B101	INT HEADER - 2X8 - 2 PLY	4'-10 1/4"	1008	

**LEGEND**

- BEARING WALL
- NON BEARING WALL
- JACKS
- BEAM/HEADER
- FOOTINGS/THICKENED SLAB
- STEEL COLUMN
- TRUSS TIE DOWN
- PORTAL FRAME
- JOIST/TRUSS
- LVL
- ENGINEERING PAGE NUMBER

-SEE FA DETAILS FOR FIRE ASSEMBLIES  
-SEE FIG DETAILS FOR FRAMING CONNECTORS

ALL WINDOWS HAVE T-2 1/2" HEADER HEIGHT UNLESS OTHERWISE NOTED

- FLOOR PLAN NOTES** RYAN
- ALL HEADERS ARE (2) 2x6 w/ 2x4 WALLS OR (3) 2x6 w/ 2x6 WALLS, UNLESS OTHERWISE NOTED.
  - ALL HEADERS TO HAVE (1) 2x4 OR 2x6 JACK AND KING STUD EACH END, UNLESS OTHERWISE NOTED.
  - MULTI-OPENING HEADERS TO HAVE (2) JACKS AT INTERMEDIATE BEARING, UNLESS OTHERWISE NOTED. NO ADDITIONAL FLOOR SYSTEM BLOCKING OR CONTINUOUS LOAD PATH JACKS ARE REQUIRED UNLESS OTHERWISE NOTED.
  - ALL EXTERIOR WALLS TO BE 4" w/ OSB OR 3 1/2" w/ LAMINATED FIBROUS STRUCTURAL SHEATHING, ALL INTERIOR WALLS TO BE 3 1/2", UNLESS OTHERWISE NOTED.
  - HATCHED AREAS INDICATE DROPPED CEILINGS. ALL DROPPED CEILINGS ARE 12" UNLESS OTHERWISE NOTED. SEE ARCHITECTURAL DETAIL 8/IT-1B FOR 3/4" FIRE STOPPING AT BULKHEAD / CEILING PANELS.
  - SEE BRACED WALL PANEL DETAIL SHEET FOR SPECIAL WALL FRAMING LOCATIONS AND HEADER SIZES, IF APPLICABLE.
  - SEE STANDARD DETAIL CATEGORY "IT" SHEET(S) FOR INTERIOR TRIM DETAILS.
  - SEE ARCHITECTURAL DETAIL SHEET "AD" FOR HOUSE SPECIFIC INTERIOR TRIM OPTION TABLE.
  - ALL HEADERS IN NON-BEARING WALLS SHALL BE A SINGLE FLAT 2X4 OR 2X6 ATTACHED TO CRIPPLES ABOVE, UNLESS OTHERWISE NOTED.
  - TANKED WATER HEATER SHOWN AS BASE CONDITION, OPTIONAL TANKLESS WATER HEATER IS AVAILABLE IN LIEU OF TANKED WATER HEATER.
  - INTERIOR HEADER HEIGHT TO BE 6'-11" w/ 8'-0" CEILINGS AND T-11" w/ 9'-0" CEILINGS UNLESS OTHERWISE NOTED.
  - BASEMENT FINISH DIMENSIONS ASSUME A 1/2" GAP BETWEEN FRAME WALL AND CONCRETE WALL.
  - ALL INTERIOR BEARING WALLS SHALL HAVE GYPSUM APPLIED TO AT LEAST ONE SIDE OR HAVE MID-HEIGHT BLOCKING INSTALLED.

**GYPSUM NOTES**

AT GARAGE:  
GYPSUM BOARD AT COMMON WALLS, CEILING, BEAM WRAPS AND SUPPORTS PER STANDARD DETAIL FA-1(b) FIRE ASSEMBLIES OR AS REQUIRED BY LOCAL CODE.

AT STAIRS:  
1/2" GYPSUM BOARD AT UNDERSIDE OF STAIRS AND WALLS IN CLOSET

DIV-COMM-LOT-UNIT  
**DCY-S2-0464**  
COM-LOT  
SAYERS MILL - SIMPLY RYAN - 0464  
STREET ADDRESS  
9903 CRESTING DRIVE  
CITY MIDDLETOWN STATE OH ZIP 45042

NVR, Inc. expressly reserves its copyright and other property rights in these plans. These plans are not to be reproduced, stored in a retrieval system, or transmitted in any form or by any means, electronic, mechanical, photocopying, recording, or otherwise, without the prior written consent of NVR, Inc.

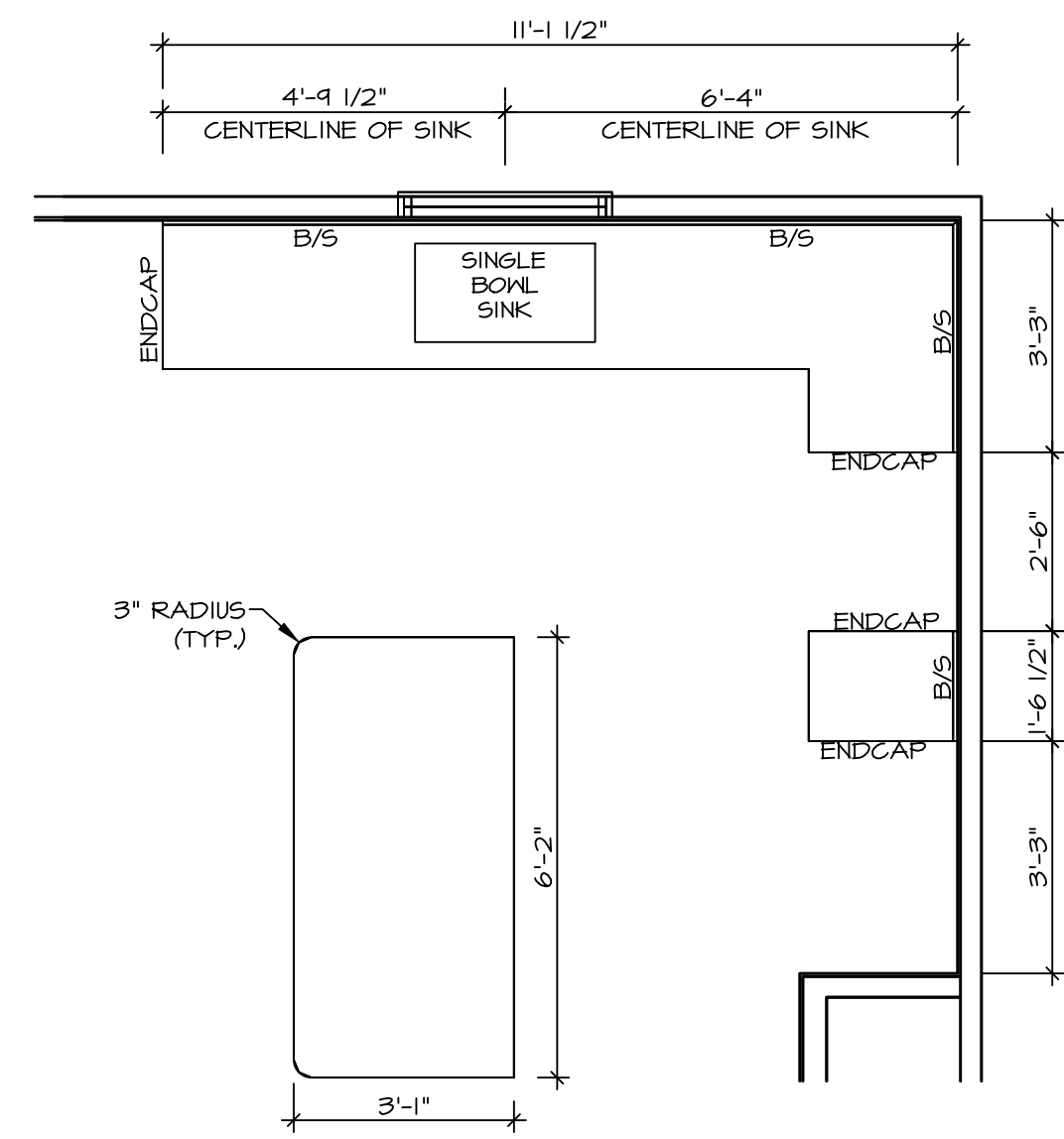
**NVR**  
NVR, Inc. Suite 100  
5285 Westwood Blvd  
Frederick, MD 21703

SET NO. TUPOO  
VERSION 01  
RELEASE NO. ----  
DRAWN BY HNT  
DATE: 02/21/20  
OPTION

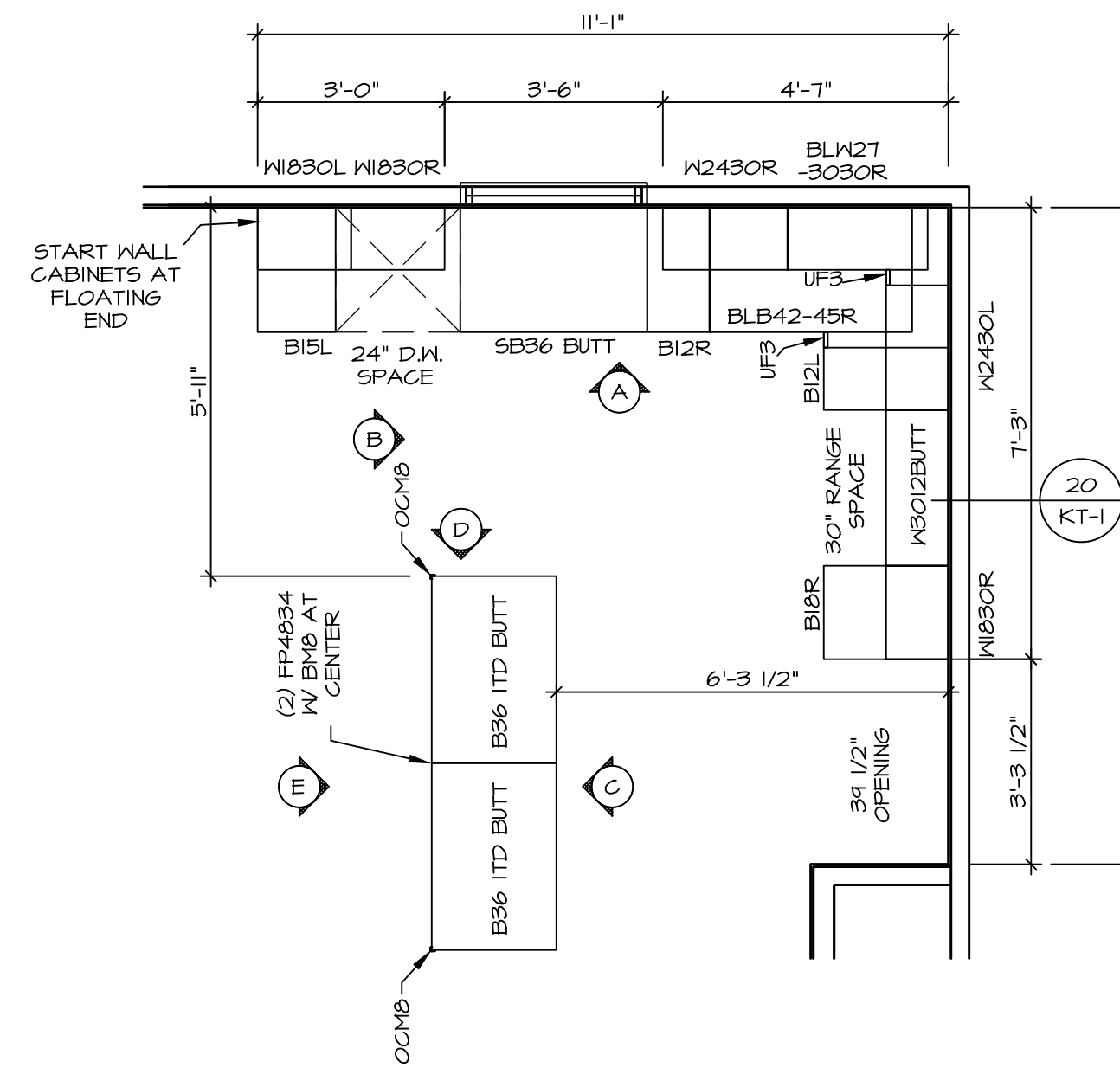
SHEET NO. MODEL  
**A-7**  
TUPELO  
DRAWING TITLE  
FIRST FLOOR PLAN  
OPTION DESCRIPTION  
12

**NOTES:**  
 1. CABINET LAYOUT (S) ARE BASED ON FINISHED DIMENSIONS TO DRYWALL.  
 2. IF KITCHEN PLANS/ELEVATIONS CALL-OUT STANDARD MOLDING, REFER TO STANDARD DETAIL (I/KT-1) FOR REPLACEMENT BASED ON CABINET STYLE.  
 3. ALL (JFR) FILLERS ARE TO BE "TRIM TO FIT" UNLESS OTHERWISE NOTED.  
 4. CABINET MUST BE SET, SHIMMED, LEVELED AND PLUMB W/ ADJOINING BASE CABINETS.  
 5. SET PRE-FINISHED SCRIBE MOLDING AT CABINET BULKHEADS AND AT ENDS (WHERE CABINETS MEET DRYWALL.) PRE-FINISHED SCRIBE MOLDING SHALL BE USED TO PAD OUT CABINET SIDES AT STILE FOR RETURN PIECES OF THE FACE-MOUNTED CABINET CROWN MOLDING.

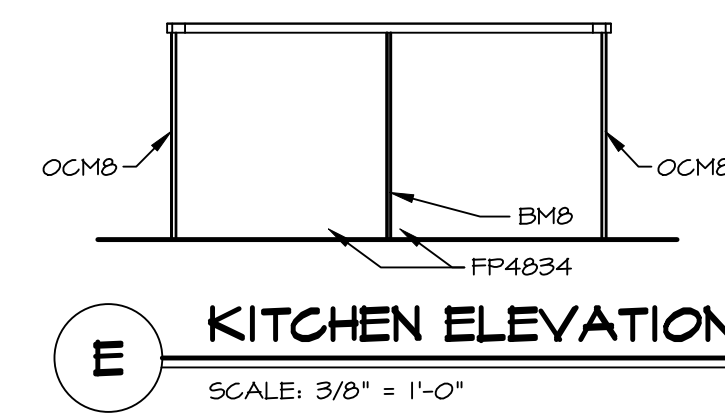
**NOTES:**  
 CABINETS ARE NOT REPRESENTATIVE OF ALL STYLES AND ARE MEANT AS A GENERAL DEPICTION OF THE INTENDED CABINET LAYOUT



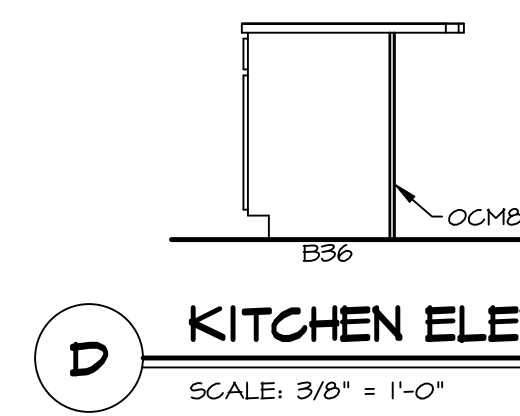
**2** **KITCHEN COUNTERTOP PLAN- (KC-3933)**  
 A-II SCALE: 3/8" = 1'-0"



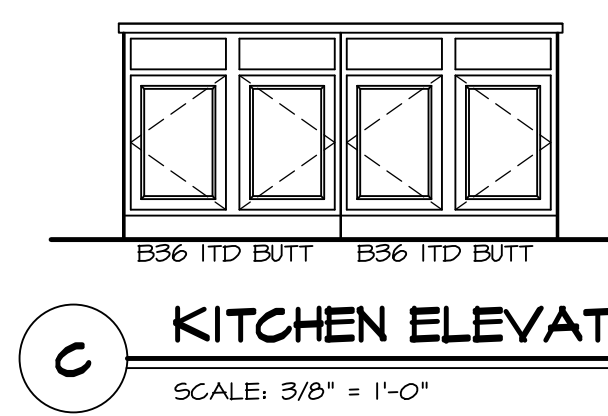
**1** **KITCHEN CABINET PLAN- (KC-3933)**  
 A-II SCALE: 3/8" = 1'-0"



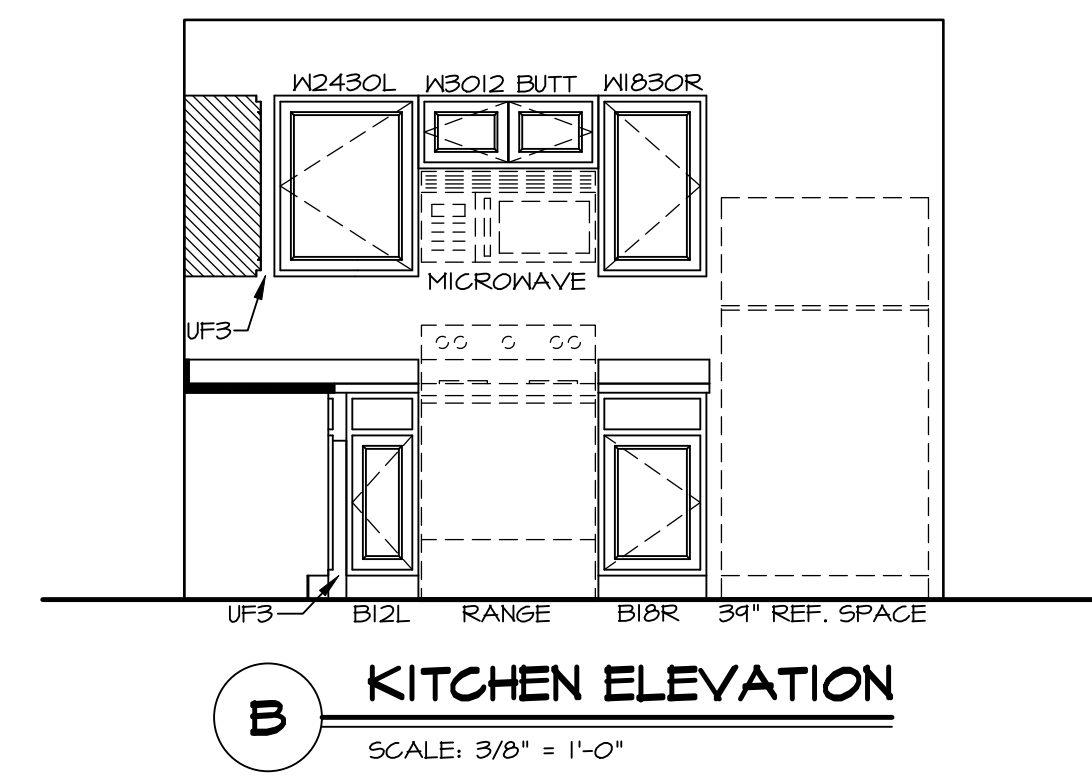
**E** **KITCHEN ELEVATION**  
 SCALE: 3/8" = 1'-0"



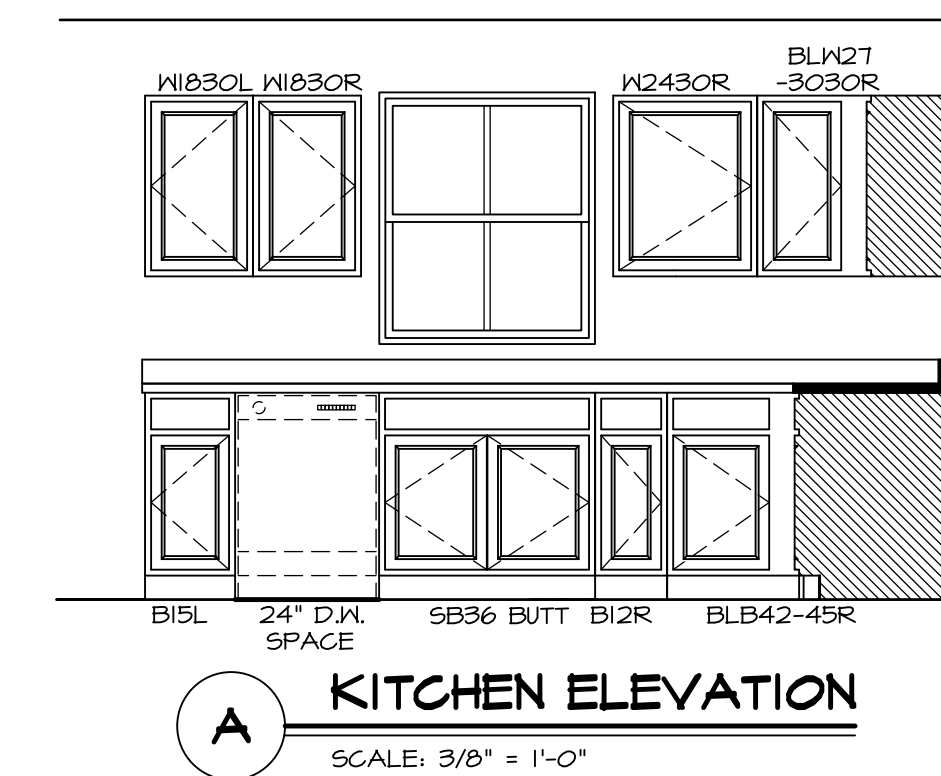
**D** **KITCHEN ELEVATION**  
 SCALE: 3/8" = 1'-0"



**C** **KITCHEN ELEVATION**  
 SCALE: 3/8" = 1'-0"



**B** **KITCHEN ELEVATION**  
 SCALE: 3/8" = 1'-0"



**A** **KITCHEN ELEVATION**  
 SCALE: 3/8" = 1'-0"

**DCY-S2-0464**

**NVR**  
 5285 Westwick, Suite 100  
 Frederick, MD 21703

SET NO. TUPOO  
 VERSION OI  
 RELEASE NO. ----  
 DRAWN BY SGA  
 DATE:  
 OPTION

**TUPELO**  
 DRAWING TITLE  
 KITCHEN

OPTION DESCRIPTION

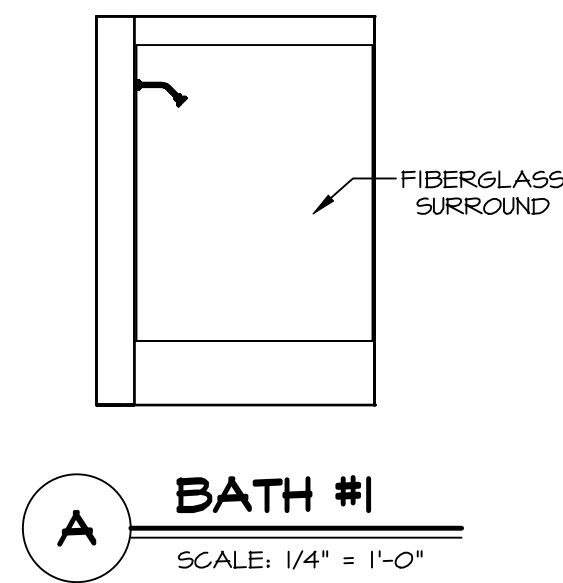
SHEET NO. **A-II**

16

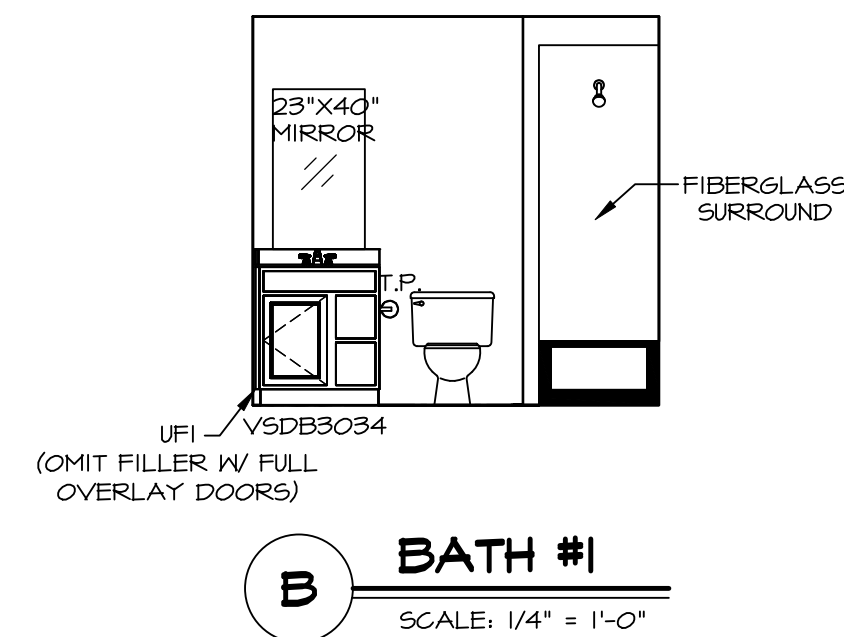
DIV-COMM-LOT-UNIT  
 COM-LOT  
 SAMYERS MILL - SIMPLY RYAN - 0464  
 STREET ADDRESS  
 9903 CRESTING DRIVE  
 CITY MIDDLETOWN OH STATE OH ZIP 45042

© NVR, Inc., expressly reserves its copyright and other property rights in these plans. These plans are not to be reproduced, stored in a retrieval system, or transmitted in any form or by any means, electronic, mechanical, photocopying, recording, or otherwise, without the prior written consent of NVR, Inc.

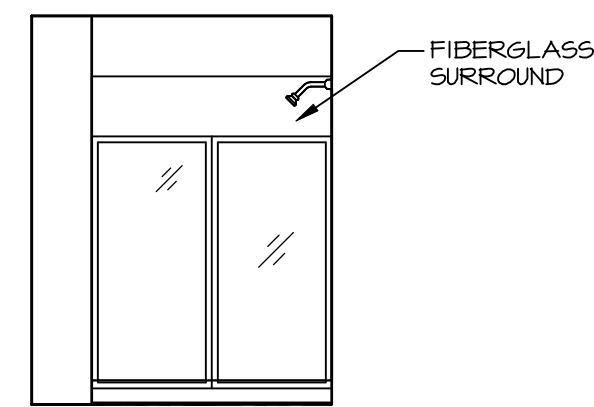
C:\NVR\Spines\TUPELO\_TUP00\_01\DCY-S2-0464\3149551\Sheets\Lot\_Specific\A-II\_KIT\_LS.dwg 07/14/24 - 2:50 PM



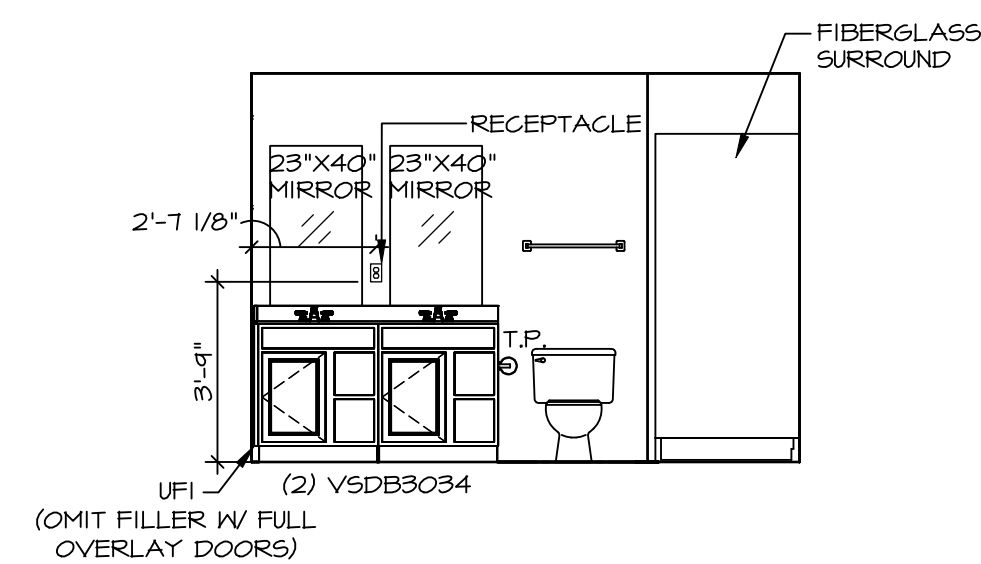
**A BATH #1**  
SCALE: 1/4" = 1'-0"



**B BATH #1**  
SCALE: 1/4" = 1'-0"



**E OWNER'S BATH**  
SCALE: 1/4" = 1'-0" OWNER'S BATHROOM SHOWER "AMA"

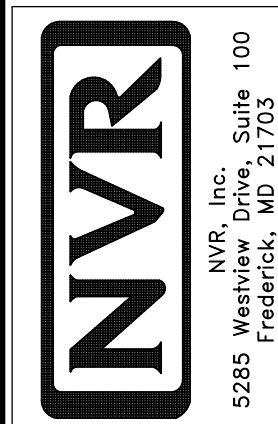


**F OWNER'S BATH**  
SCALE: 1/4" = 1'-0"

**NOTES:**

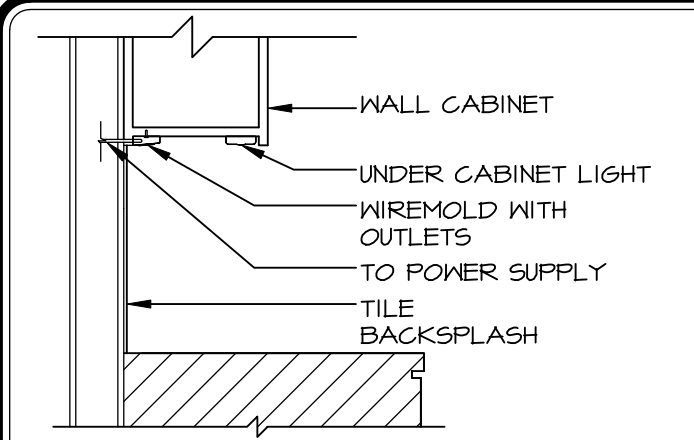
1. TEMPERED GLASS SHOWER ENCLOSURE WITH SWING DOOR OR OPTIONAL SLIDING DOOR BY DIVISION.
2. TUB ACCESS PANELS PROVIDED AS NEEDED, ALL MATERIALS BY DIVISION.
3. ALL BATH ELEVATIONS SHOWN PER PLAN.
4. ALL VANITIES WITH DRAWERS TO BE SET WITH DRAWERS ON RIGHT HAND SIDE.
5. BATH ELEVATIONS ARE SHOWN PER PLAN.
6. ALL DIMENSIONS SHOWN ON BATH ELEVATIONS ARE ROUGH FRAMING REFERENCES ONLY.

SHEET NO.	<b>A-12</b>
MODEL	TUPELO
DRAWING TITLE	BATH ELEVATIONS
OPTION DESCRIPTION	
SET NO.	TUPELO
VERSION	01
RELEASE NO.	----
DRAWN BY	HNT
DATE	02/21/20
OPTION	

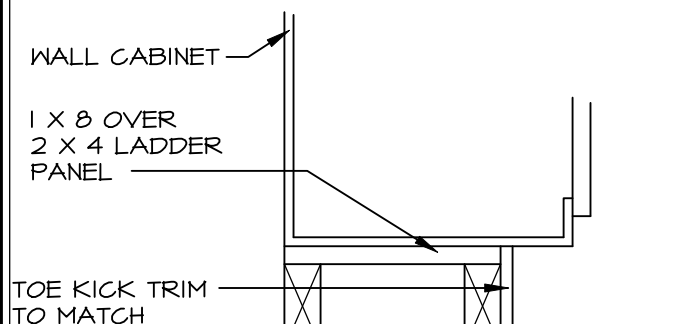


© NVR, Inc., expressly reserves its copyright and other property rights in these plans. These plans are not to be reproduced, stored in a retrieval system, copied in any form or manner whatsoever, nor are they to be used for any project without the express written consent of NVR, Inc.

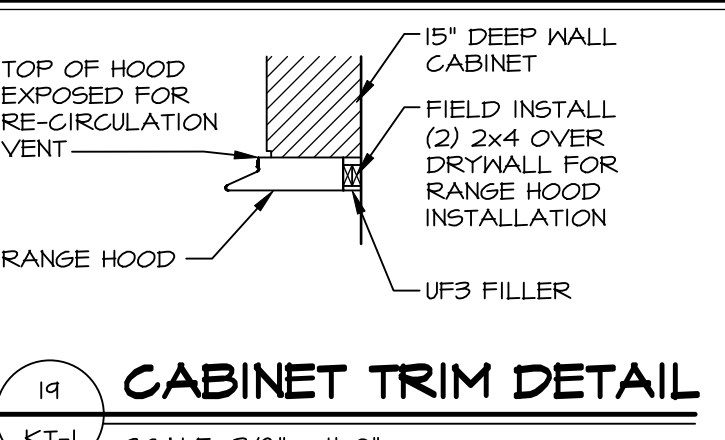
DIV-COMM-LOT-UNIT	
<b>DCY-S2-0464</b>	
COM-LOT	
STREET ADDRESS	SAMYERS MILL - SIMPLY RYAN - 0464
CITY	9903 CRESTING DRIVE
STATE	OH
ZIP	45042



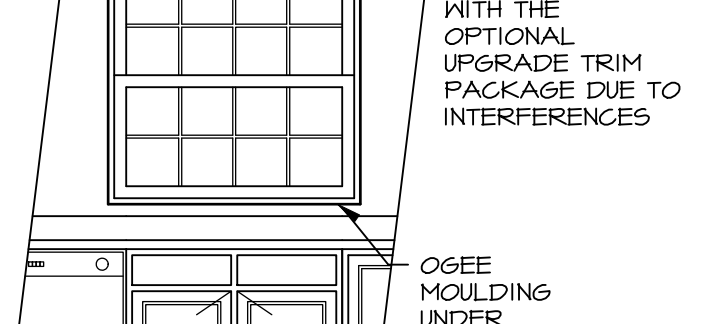
**6 UNDER CABINET WIREMOLD**  
KT-1 SCALE: 3/4" = 1'-0"



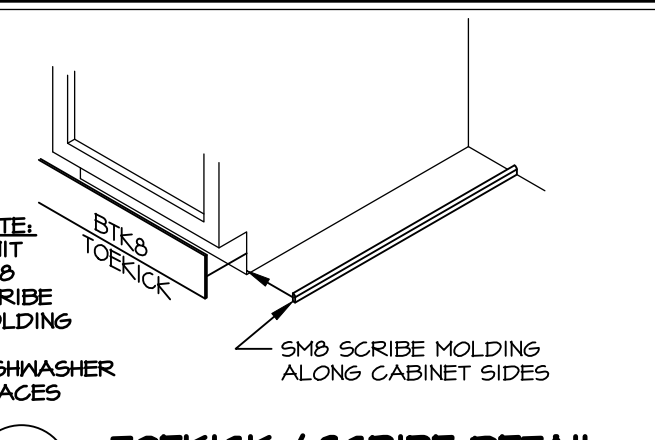
**12 WALL CABINET TOE KICK DETAIL**  
KT-1 1-1/2" = 1'-0"



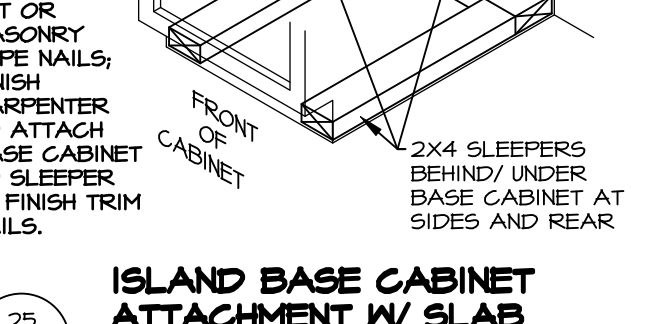
**19 CABINET TRIM DETAIL**  
KT-1 SCALE: 3/8" = 1'-0"



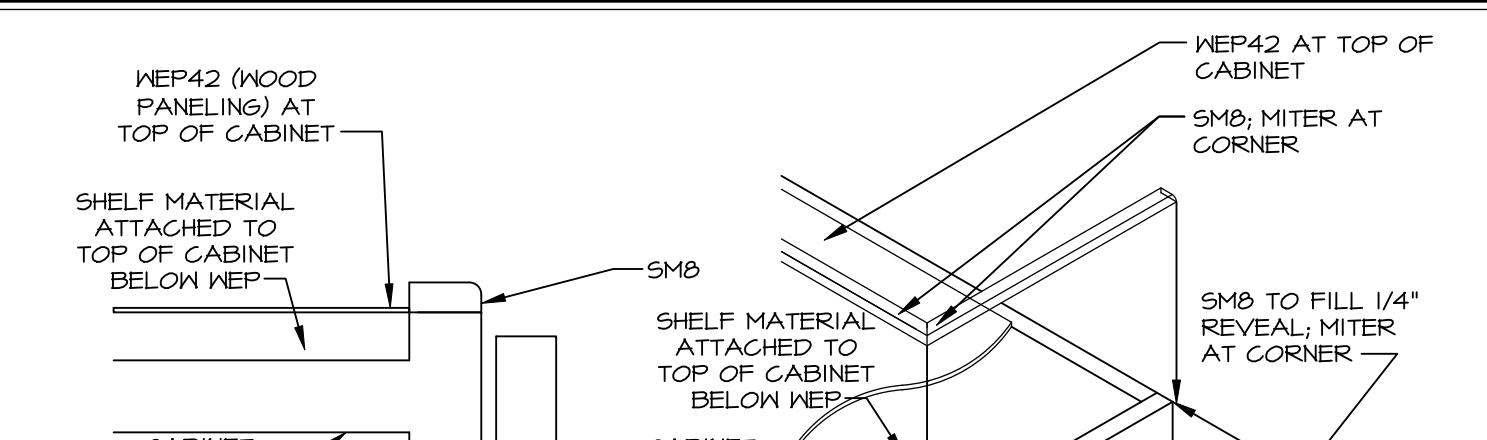
**25 ISLAND BASE CABINET ATTACHMENT W/ SLAB**  
KT-1 SCALE: 3/4" = 1'-0"



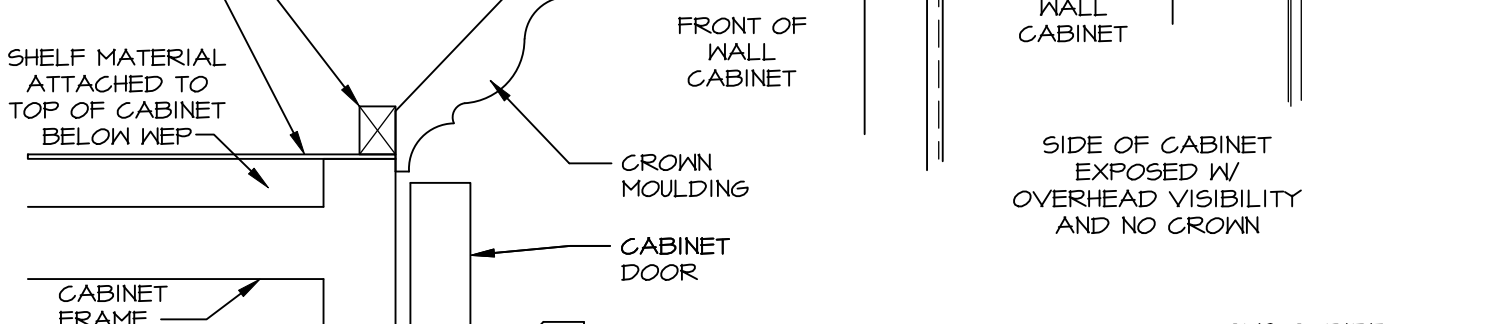
**18 TOEKICK / SCRIBE DETAIL**  
KT-1 SCALE: 3/4" = 1'-0"



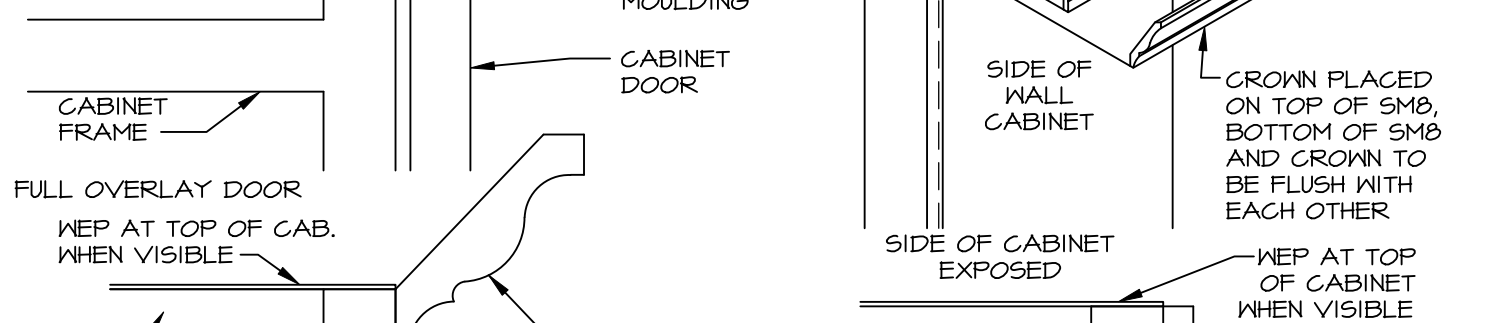
**7 TRIM AT KITCHEN WINDOW SILL**  
KT-1 SCALE: 1/2" = 1'-0"



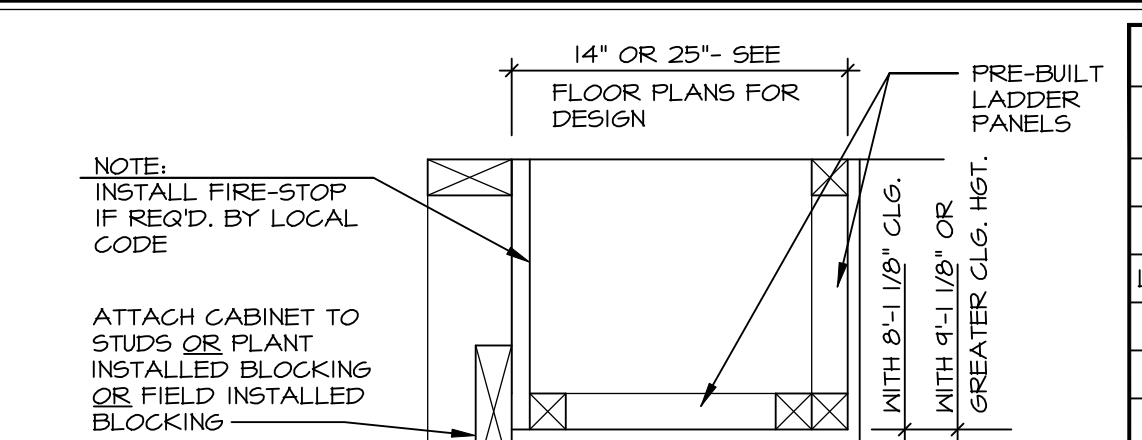
**1 CABINET BULKHEAD**  
KT-1 SCALE: 1-1/2" = 1'-0"



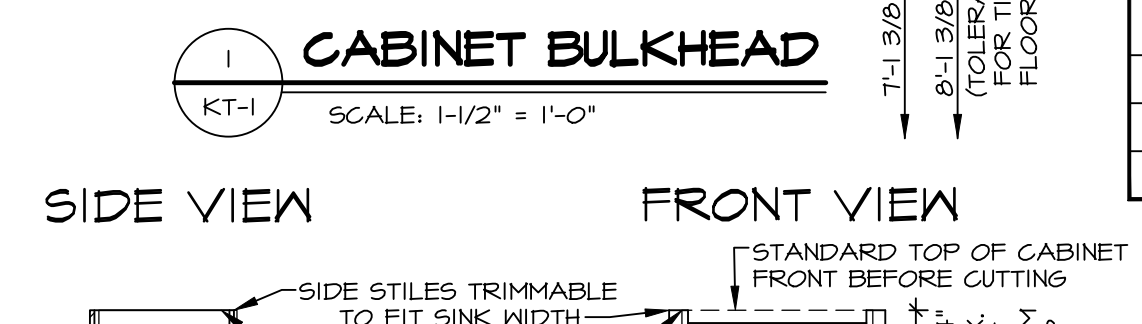
**2.2 CABINET CROWN MOULDING**  
KT-1 SCALE: 1-1/2" = 1'-0"



**2.1 CABINET MOULDING**  
KT-1 SCALE: 1-1/2" = 1'-0"



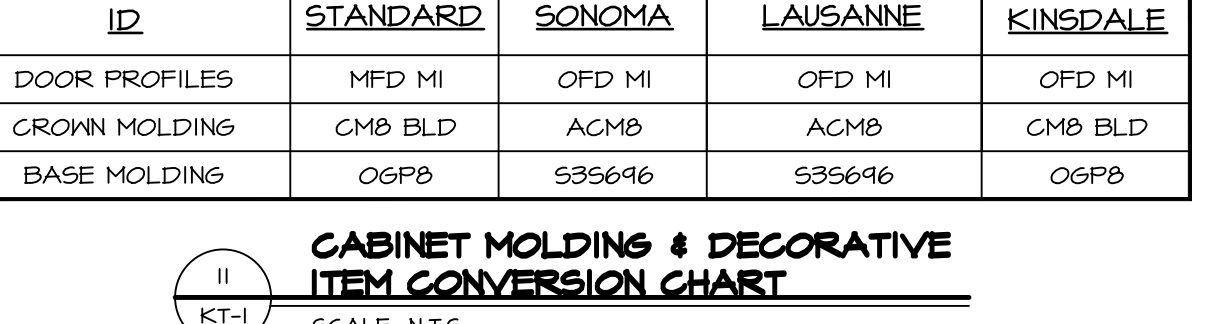
**11 CABINET MOLDING & DECORATIVE ITEM CONVERSION CHART**  
SCALE: N.T.S.



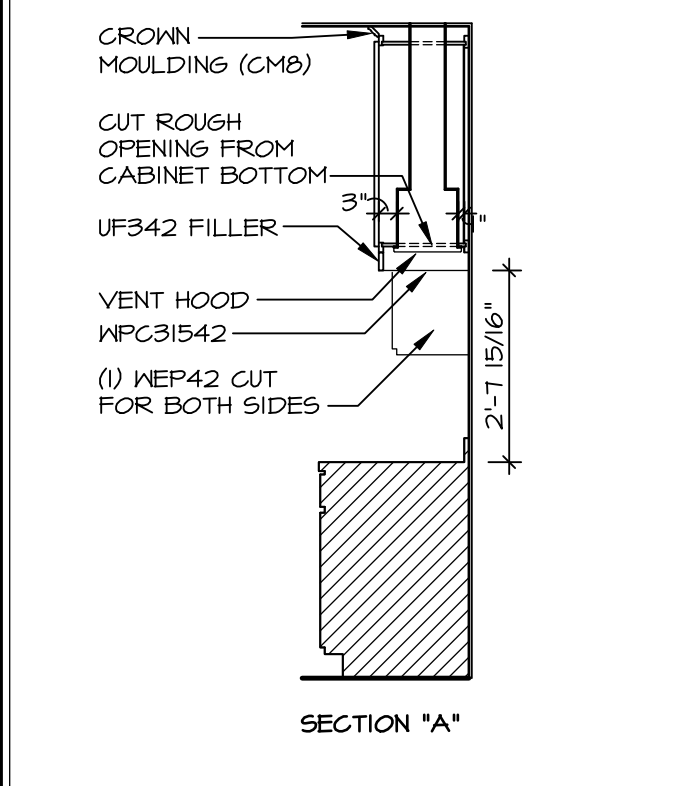
**22 FARMHOUSE SINK INSTALLATION**  
KT-1 SCALE: 3/8" = 1'-0"

ID	STANDARD	NV		
		NEW HAVEN	LAUSANNE	KINGDALE
CROWN MOLDING	CMB	SCVMB	ACMB	CMB
COUNTERTOP SUPPORT	CSI2	CC212	CC212	CSI2
LARGE CROWN MOLDING	LCMB	LCVMB	LCMB	LCMB
DOOR PROFILES	MFD MI	OFD MI	OFD MI	OFD MI
TRIM MOLDING	TCMB WD	LCVMB WD	CTMB WD	CMB
ACCENT MOLDING	SBAMB	SAMB	SBAMB	SBAMB
DECO DOORS	DECO DOORS	DECO DOORS	DECO DOORS	DECO DOORS
BASE MOLDING	OSPB	S35646	S35646	OSPB
EDGE MOLDING	TLRB	CTMB WD	CTMB WD	TLRB

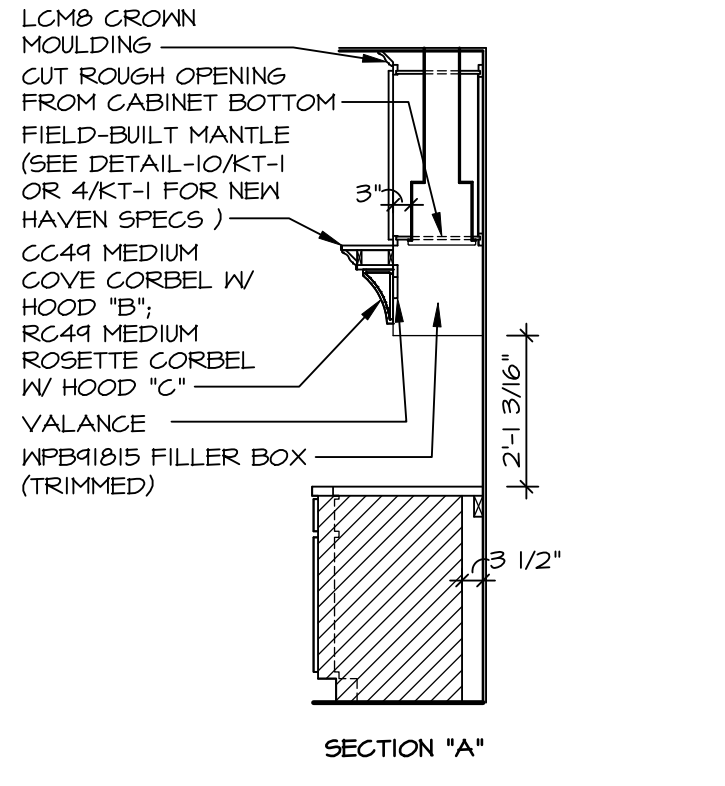
ID	STANDARD	RYAN		
		SONOMA	LAUSANNE	KINGDALE
DOOR PROFILES	MFD MI	OFD MI	OFD MI	OFD MI
CROWN MOLDING	CMB BLD	ACMB	ACMB	CMB BLD
BASE MOLDING	OSPB	S35646	S35646	OSPB



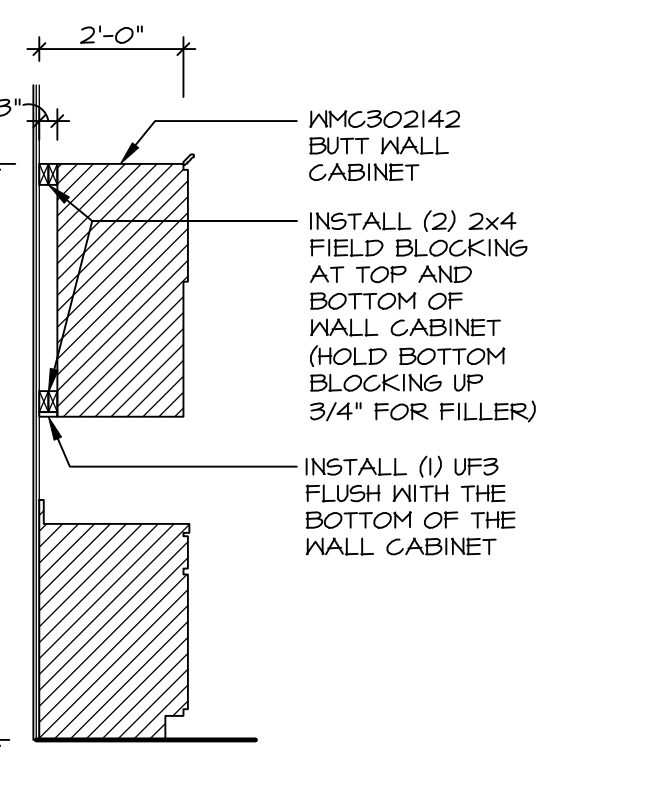
**24 DECORATOR DOORS AT CABINET ENDS**  
KT-1 SCALE: 1/4" = 1'-0"



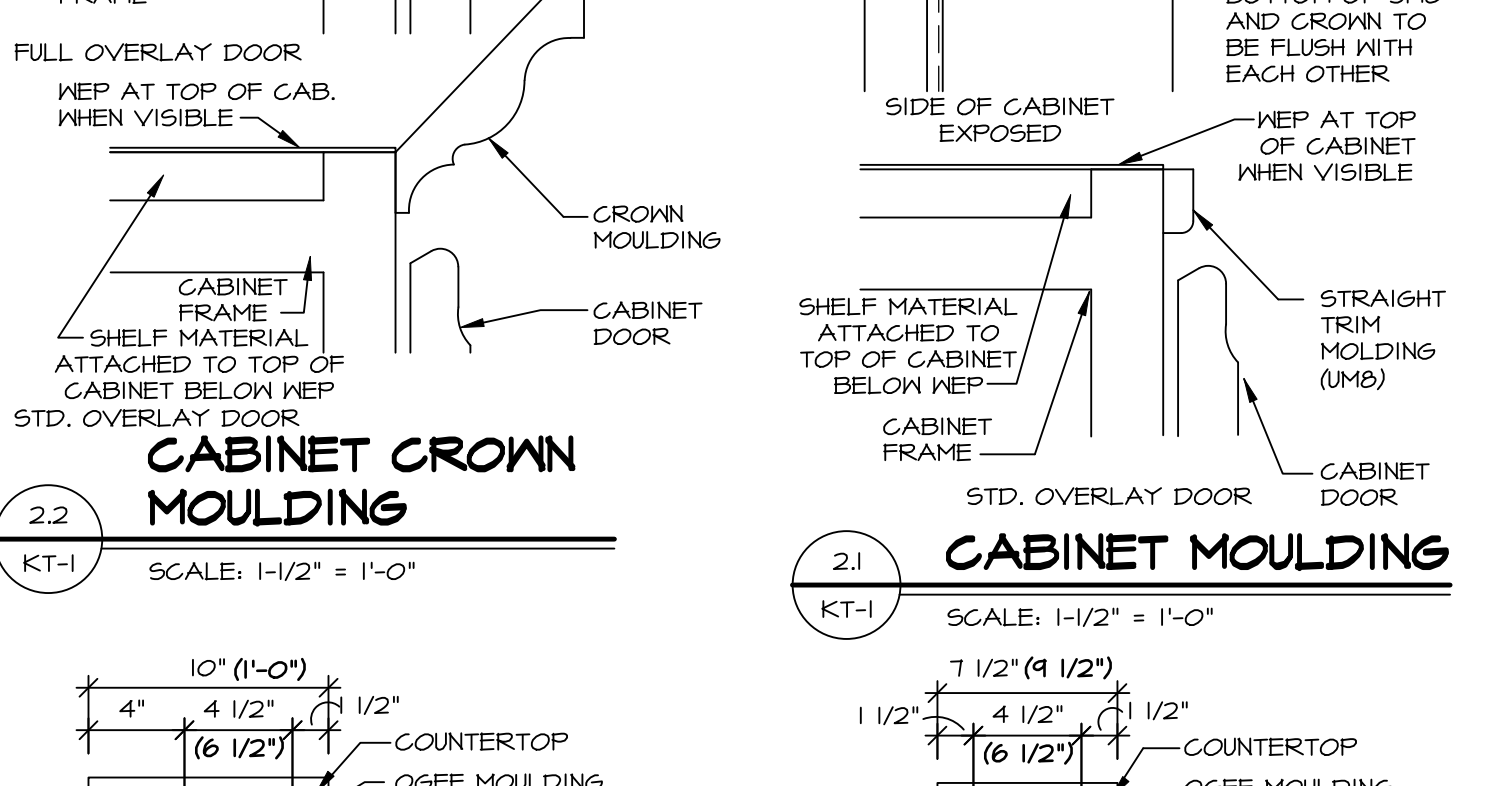
**8 CABINET ELEVATION**  
KT-1 SCALE: 3/8" = 1'-0" HOOD "A"



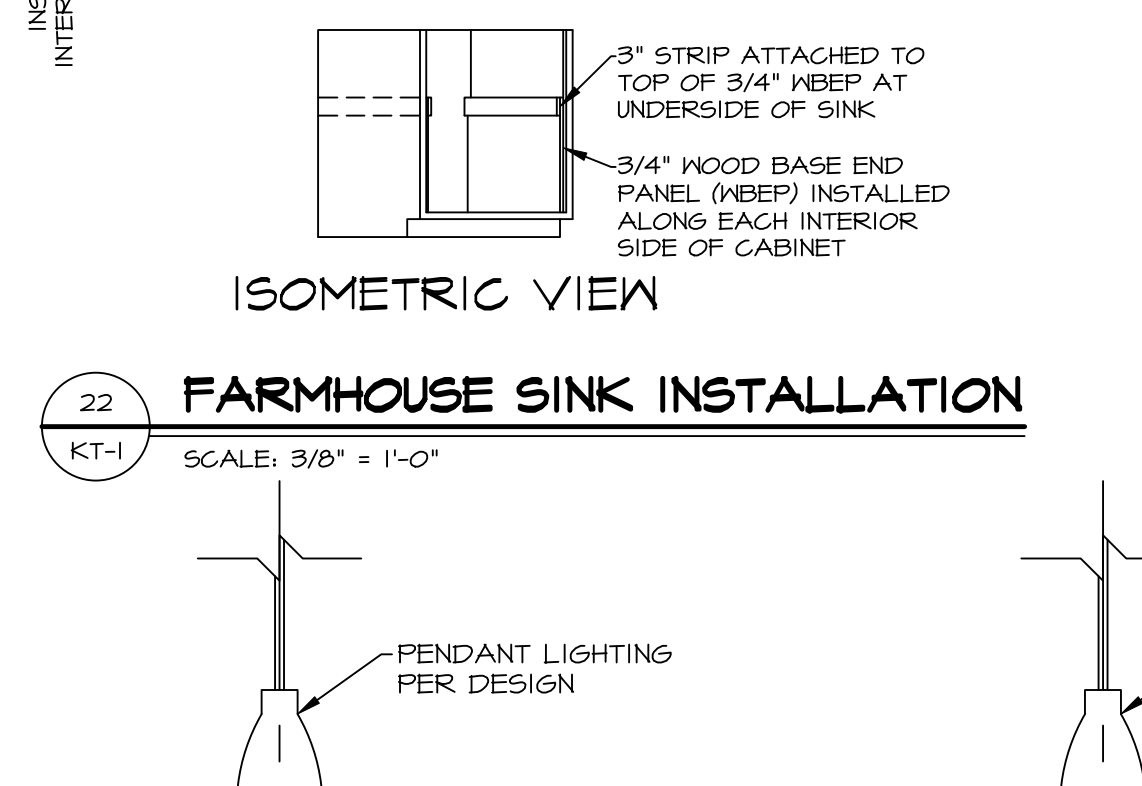
**9 CABINET ELEVATION**  
KT-1 SCALE: 3/8" = 1'-0" HOOD "B" OR HOOD "C"



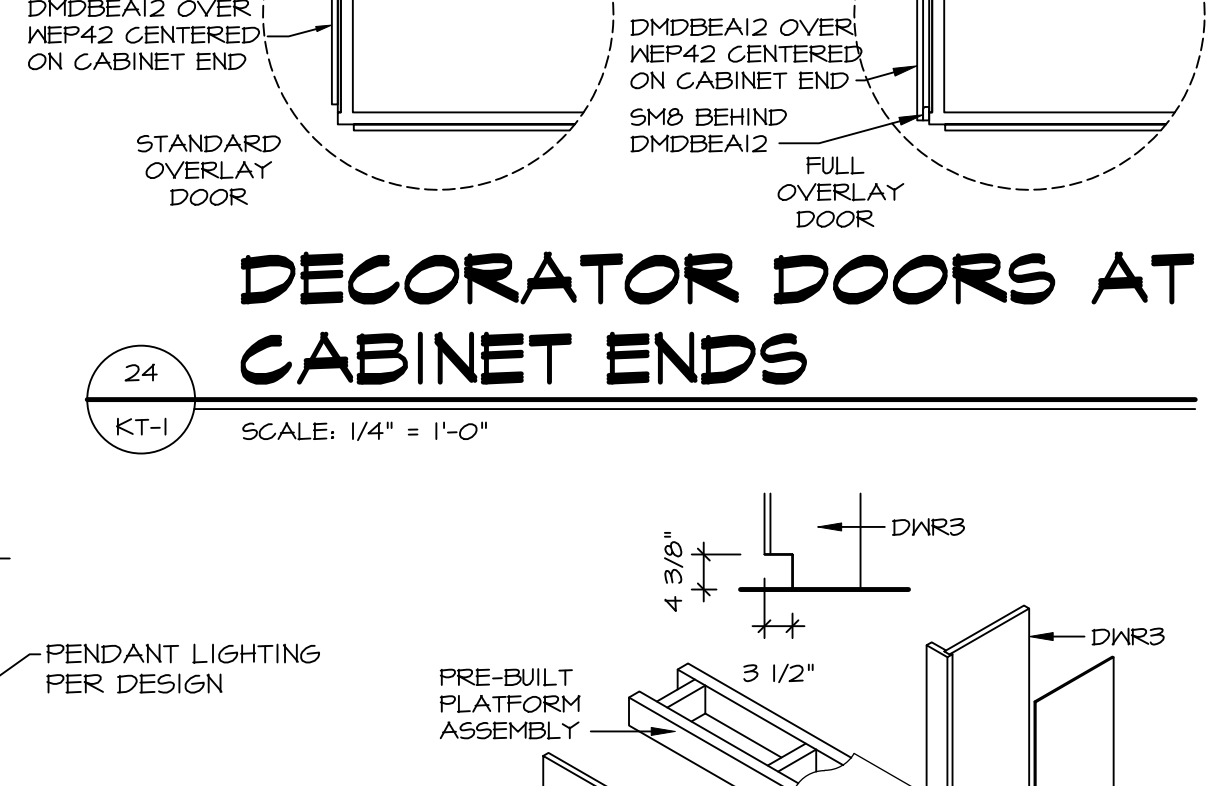
**14 CABINET SECTION**  
KT-1 SCALE: 3/8" = 1'-0" WALL MICROWAVE CABINET 21" DEEP



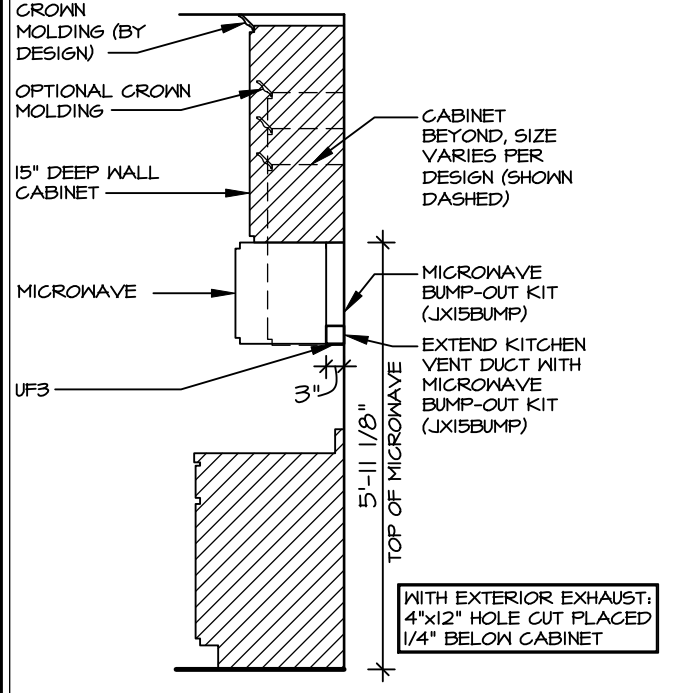
**17 COUNTERTOP OVERHANG DETAILS/ISLAND WALL ASSEMBLY**  
KT-1 SCALE: 1-1/2" = 1'-0"



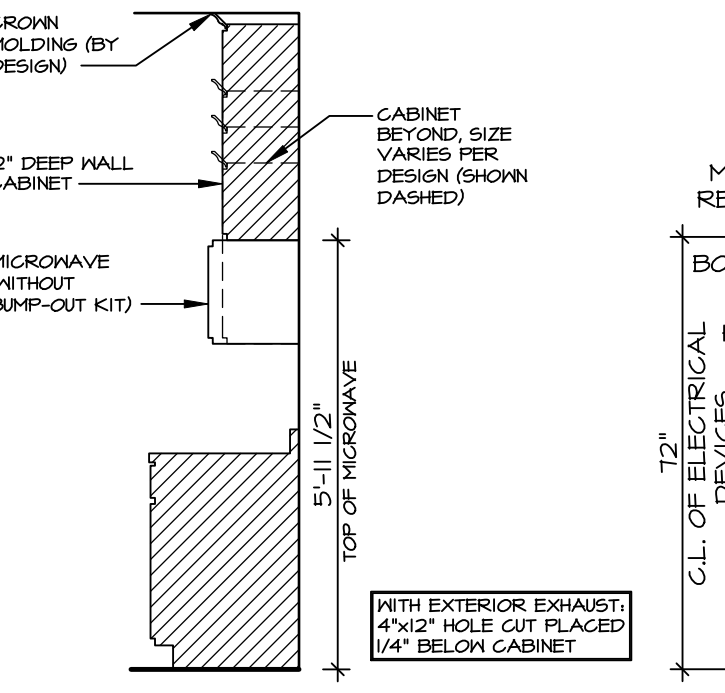
**23 MANTLE SECTION W/ NEW HAVEN**  
KT-1 SCALE: 1-1/2" = 1'-0"



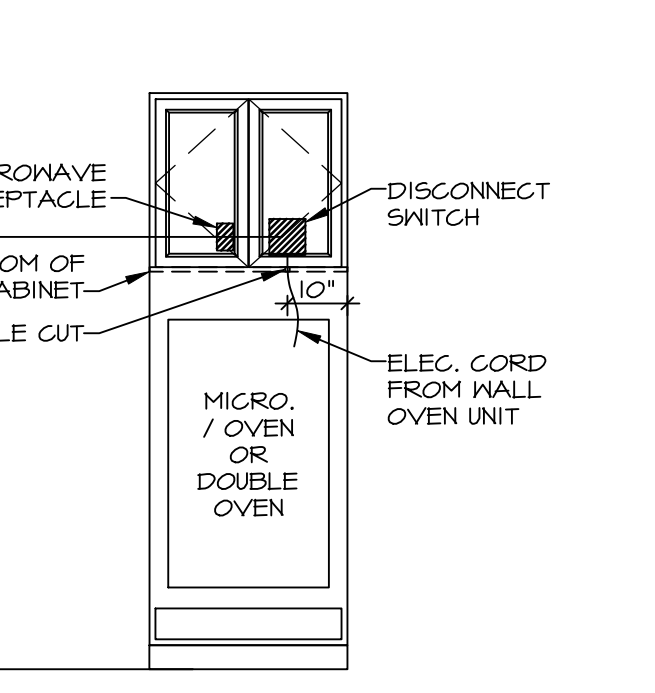
**13 CABINET TOE KICK TRIM**  
KT-1 SCALE: 1/2" = 1'-0"



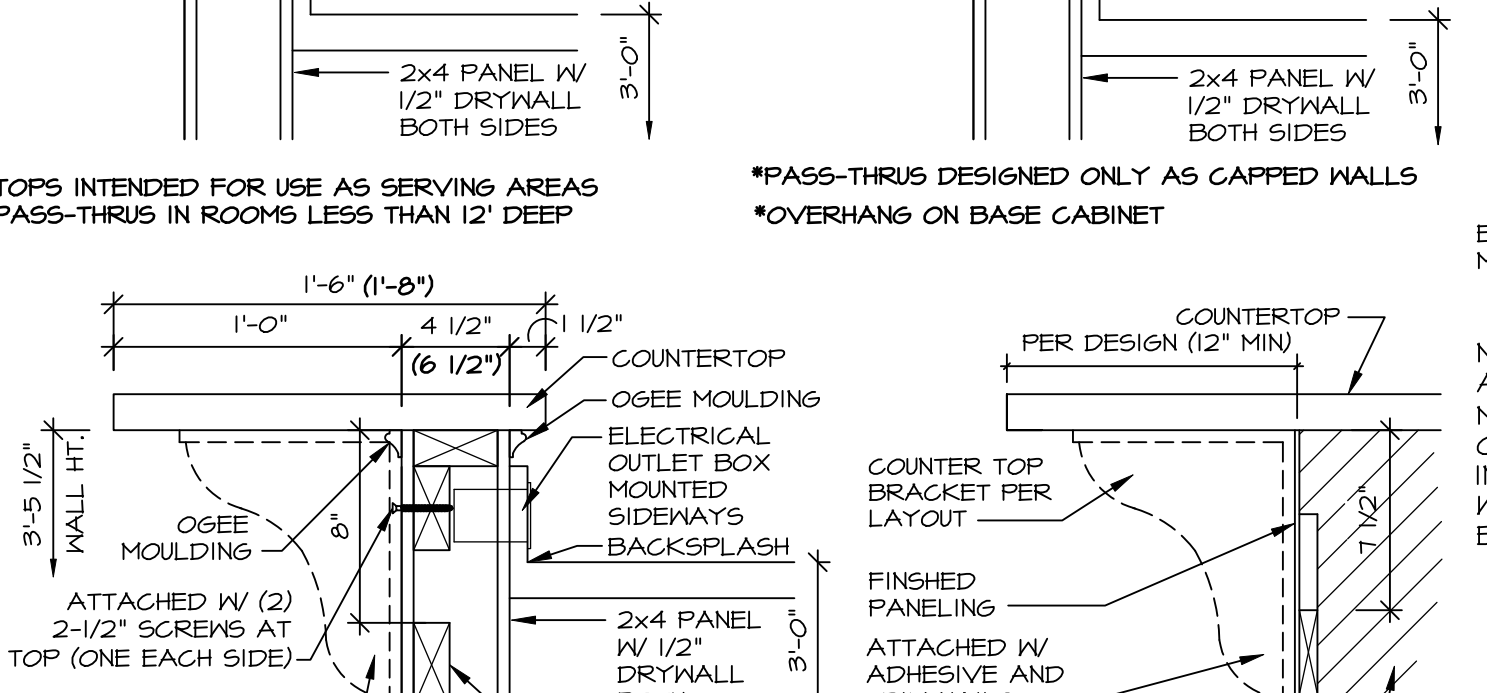
**16 CABINET TRIM DETAIL**  
KT-1 SCALE: 3/8" = 1'-0"



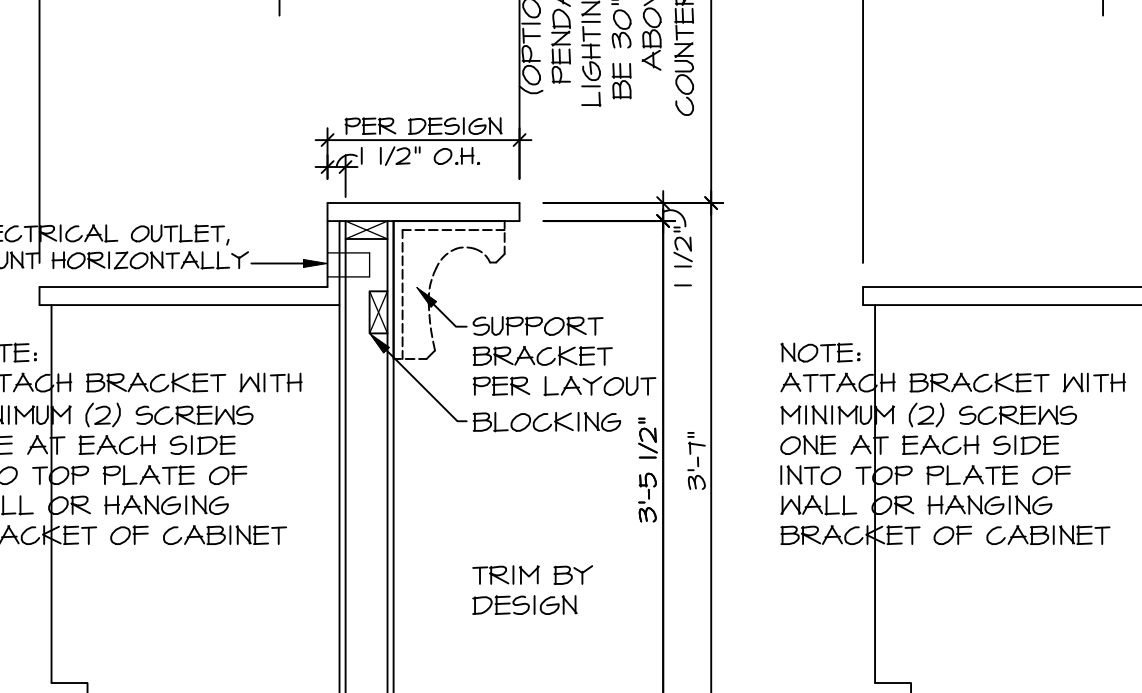
**20 CABINET TRIM DETAIL**  
KT-1 SCALE: 3/8" = 1'-0"



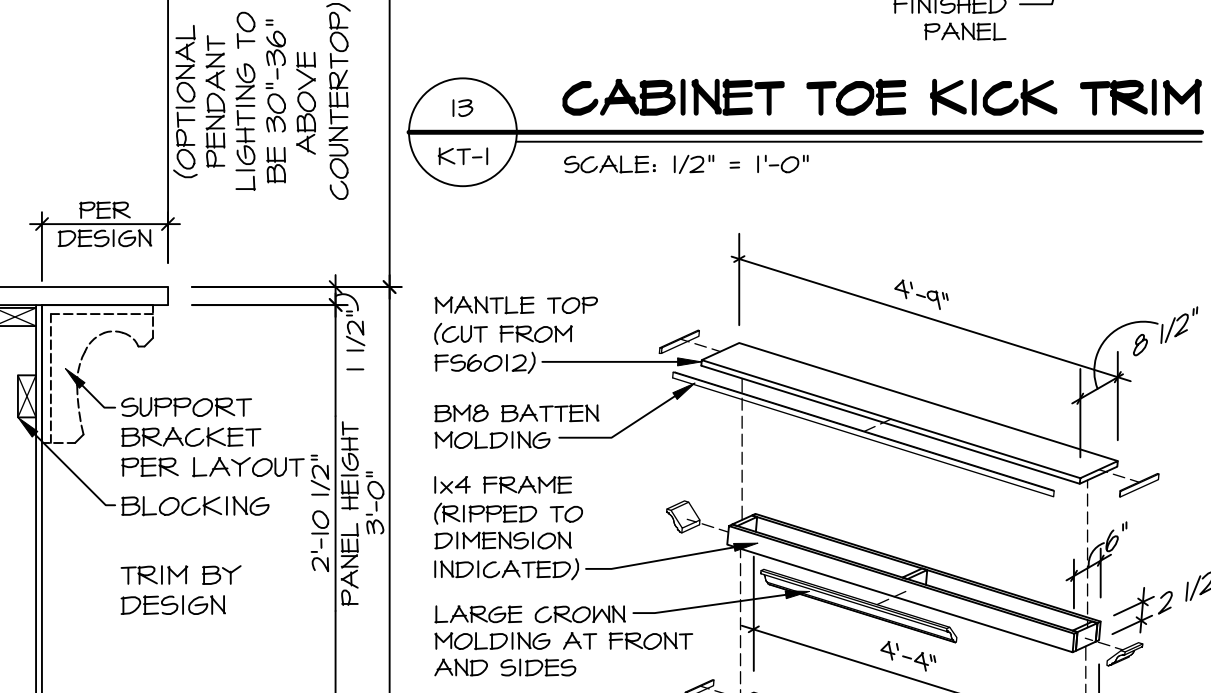
**21 OVEN JUNCTION BOX LOCATION**  
KT-1 SCALE: 3/8" = 1'-0" W STANDARD 30" OVEN



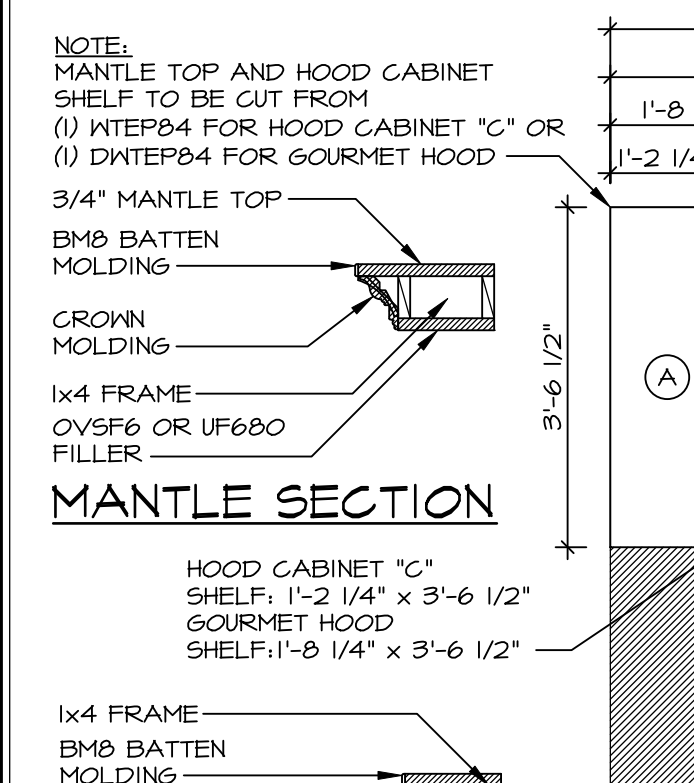
**3 BAR DETAIL**  
KT-1 SCALE: 3/4" = 1'-0"



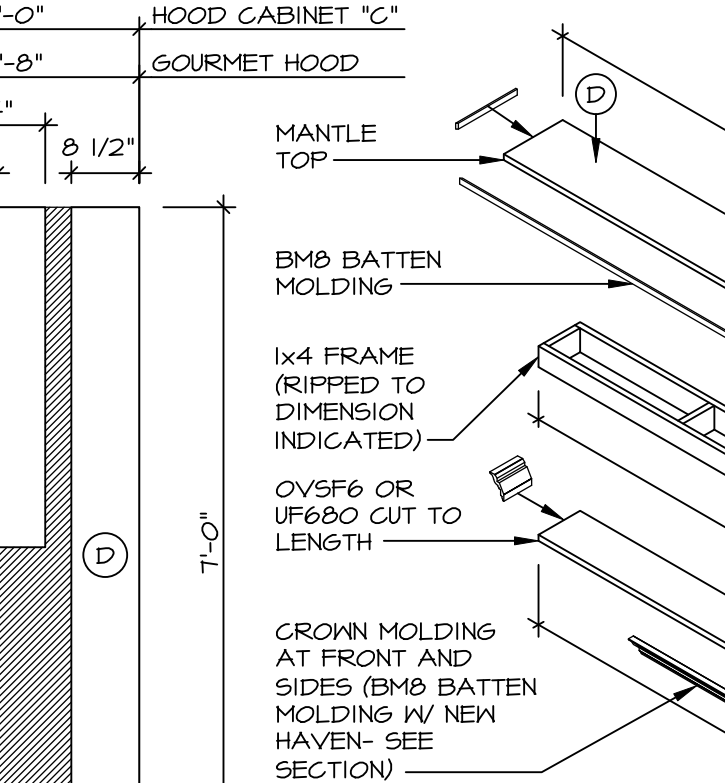
**10 KITCHEN TRIM DETAIL**  
KT-1 SCALE: 1/2" = 1'-0" HOOD "B"



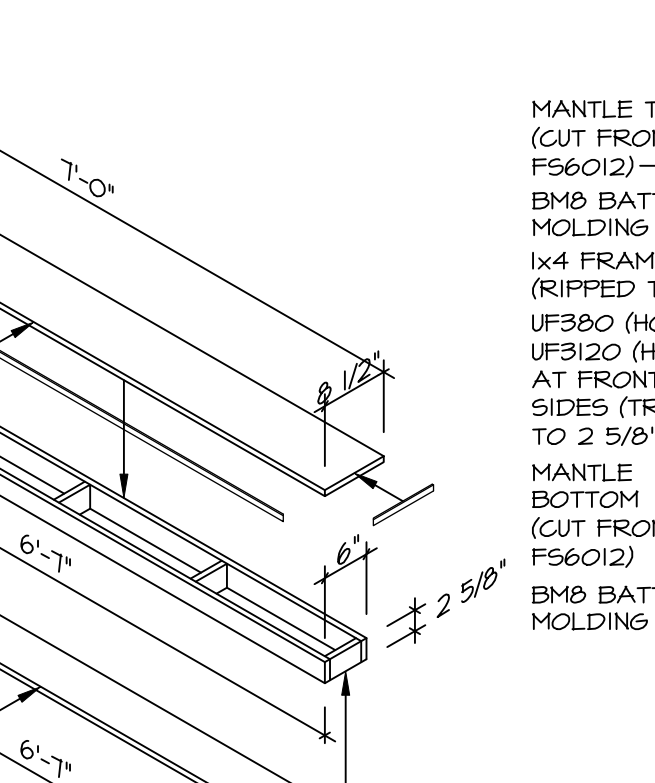
**10 KITCHEN TRIM DETAIL**  
KT-1 SCALE: 1/2" = 1'-0" HOOD "B"



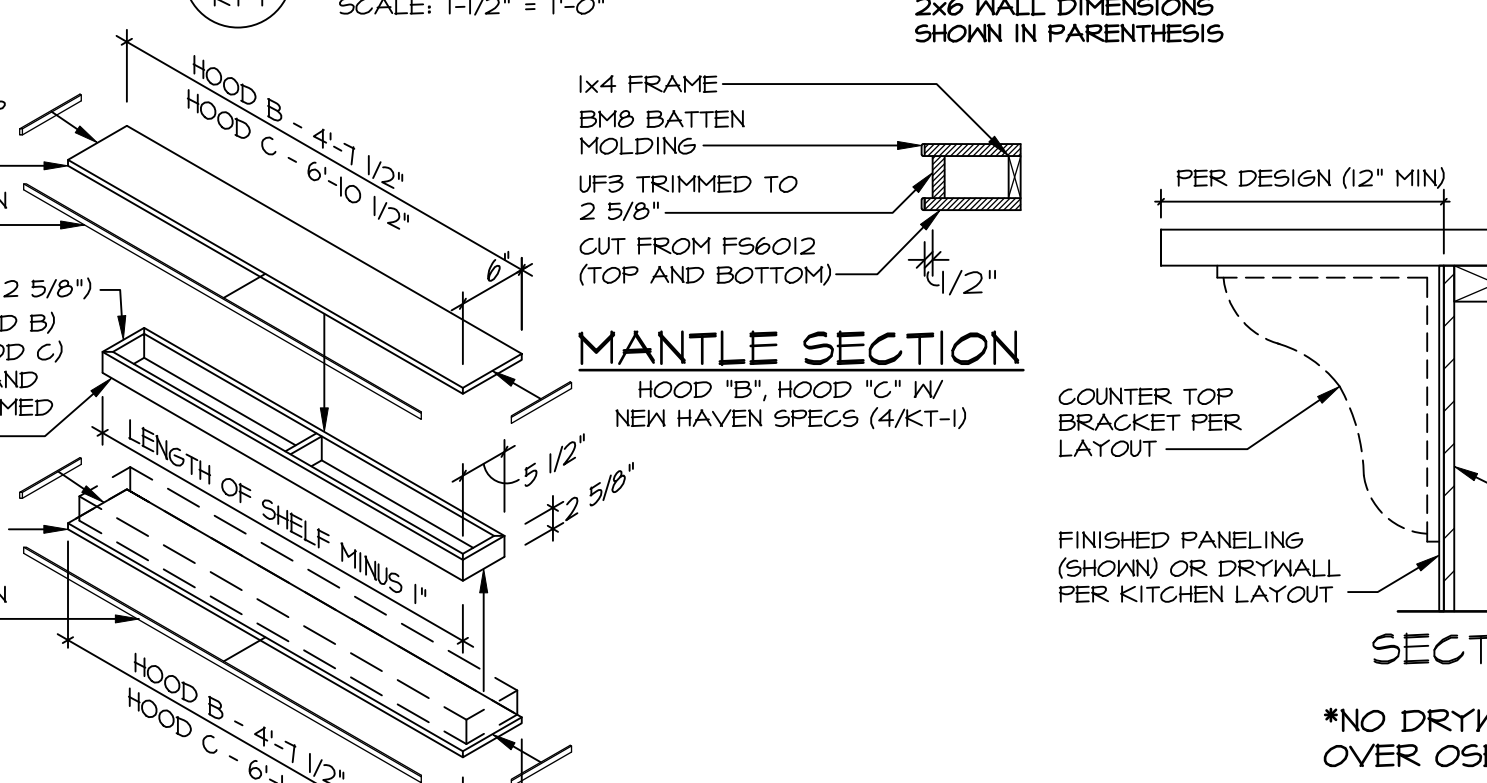
**5 KITCHEN TRIM DETAIL**  
KT-1 SCALE: 1/2" = 1'-0" HOOD "C"



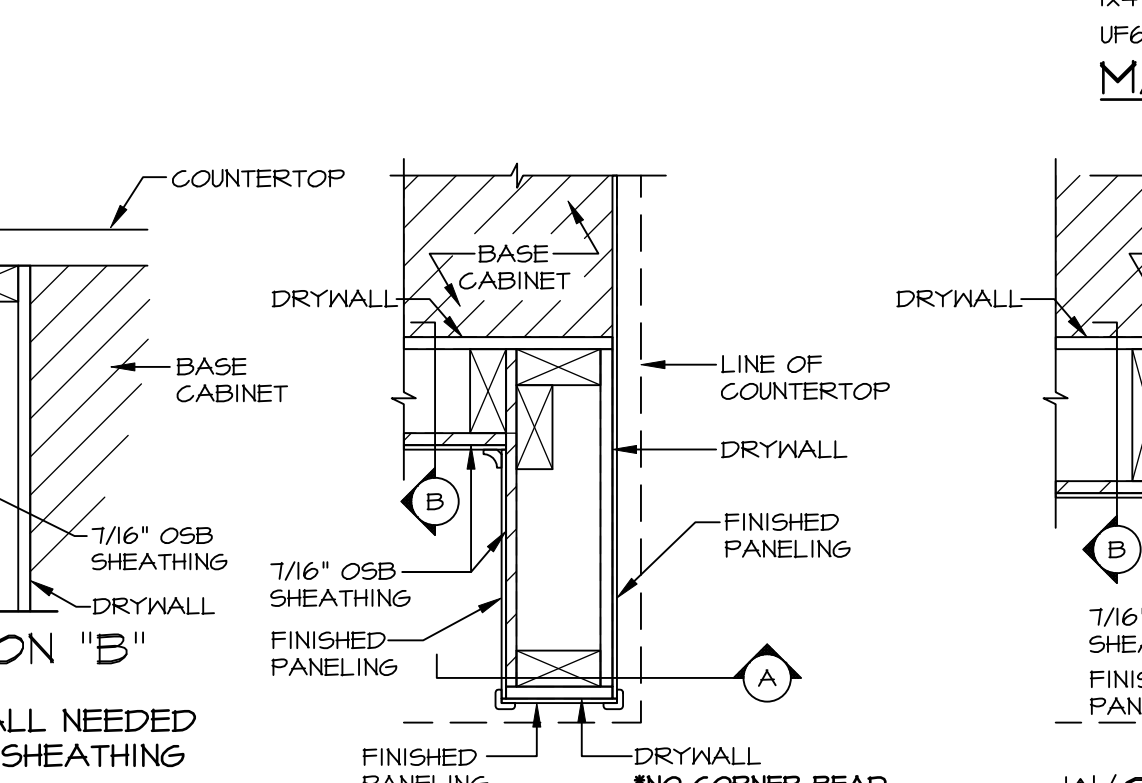
**4 MANTLE TRIM DETAIL**  
KT-1 SCALE: 1/2" = 1'-0" HOOD "B", HOOD "C" W/ NEW HAVEN SPECS



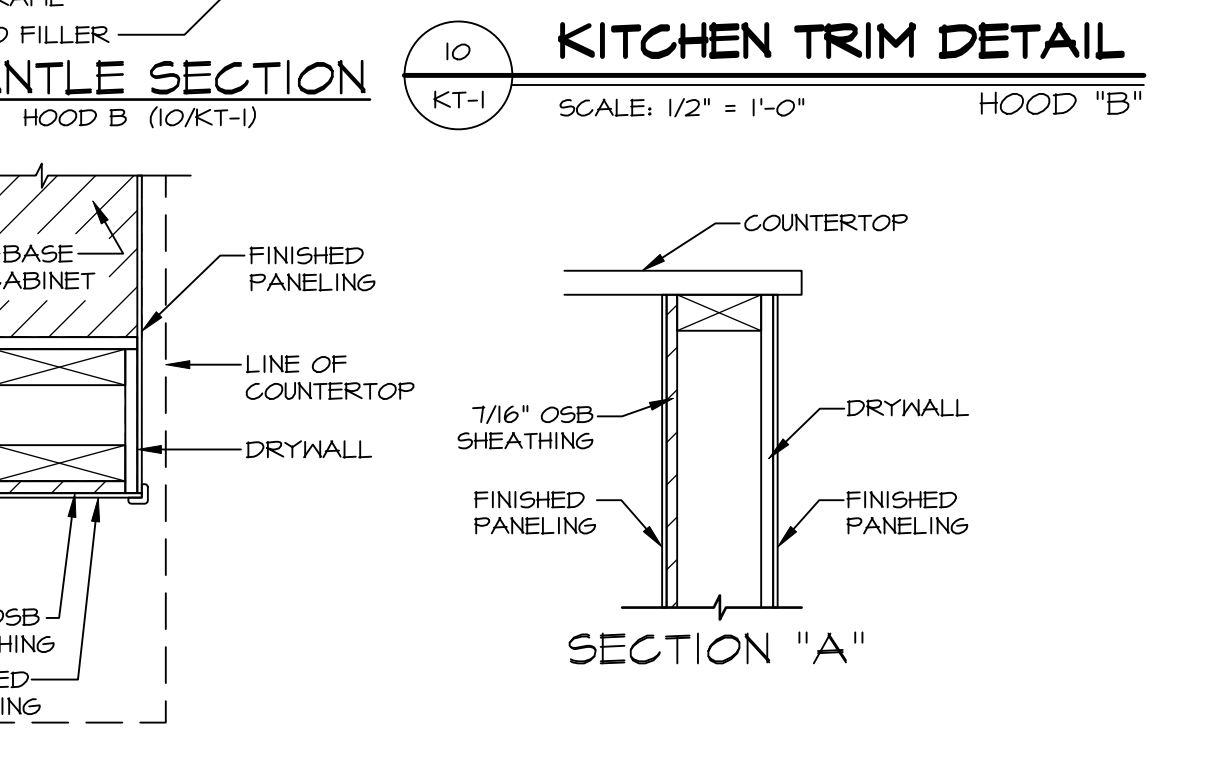
**17 COUNTERTOP OVERHANG DETAILS/ISLAND WALL ASSEMBLY**  
KT-1 SCALE: 1-1/2" = 1'-0"



**23 MANTLE SECTION W/ NEW HAVEN**  
KT-1 SCALE: 1-1/2" = 1'-0"



**10 KITCHEN TRIM DETAIL**  
KT-1 SCALE: 1/2" = 1'-0" HOOD "B"



**10 KITCHEN TRIM DETAIL**  
KT-1 SCALE: 1/2" = 1'-0" HOOD "B"

**STANDARD DETAILS**

**KT-1**

MODEL: PROJECTS/DETAILS/NVR\_Kitchen/KT-1.dwg 06/25/24 - 3:04 PM

REVISIONS:

REV.	NO.	DATE	DESCRIPTION
10	10	10/10/19	REVISED DETAIL #1 TO SHOW ISLAND WALL ASSEMBLY
11	11	11/12/19	REVISED DETAIL #2 FOR WALL OVEN JUNCTION BOX LOCATION
12	12	11/12/19	REVISED DETAIL #3 FOR NV FARM SINK INSTALLATION
13	13	11/12/19	REVISED DETAIL #4 TO REFLECT RE-CIRCULATING RANGE HOOD
14	14	12/12/20	REVISED DETAIL #5 TO REFLECT RE-CIRCULATING RANGE HOOD
15	15	2/16/21	REVISED DETAIL #6 TO REFLECT RE-CIRCULATING RANGE HOOD
16	16	5/26/21	REVISED DETAIL #7 TO INCLUDE ACCENT MOLDING (GC #1754)
17	17	10/26/21	REVISED DETAIL #8 AND #9 TO CORRESPOND WITH DETAIL 4
18	18	10/26/21	REVISED DETAIL #10 TO CALL OUT PLANT INSTALLED BLOCKING
19	19	2/26/24	REVISED DETAIL #11 TO CALL OUT PLANT INSTALLED BLOCKING

REMARKS:

10/10/19 NVR - REVISED DETAIL #1 TO SHOW ISLAND WALL ASSEMBLY

11/12/19 NVR - REVISED DETAIL #2 FOR WALL OVEN JUNCTION BOX LOCATION

11/12/19 NVR - REVISED DETAIL #3 FOR NV FARM SINK INSTALLATION

11/12/19 NVR - REVISED DETAIL #4 TO REFLECT RE-CIRCULATING RANGE HOOD

12/12/20 NVR - REVISED DETAIL #5 TO REFLECT RE-CIRCULATING RANGE HOOD

2/16/21 NVR - REVISED DETAIL #6 TO REFLECT RE-CIRCULATING RANGE HOOD

5/26/21 NVR - REVISED DETAIL #7 TO INCLUDE ACCENT MOLDING (GC #1754)

10/26/21 NVR - REVISED DETAIL #8 AND #9 TO CORRESPOND WITH DETAIL 4

10/26/21 NVR - REVISED DETAIL #10 TO CALL OUT PLANT INSTALLED BLOCKING

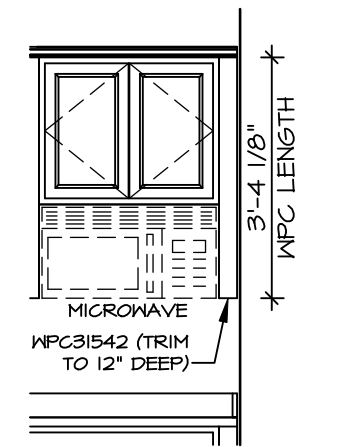
2/26/24 NVR - REVISED DETAIL #11 TO CALL OUT PLANT INSTALLED BLOCKING

© NVR, Inc. All rights reserved. No part of this publication may be reproduced, stored in a retrieval system, or transmitted, in any form or by any means, without the prior written permission of NVR, Inc.

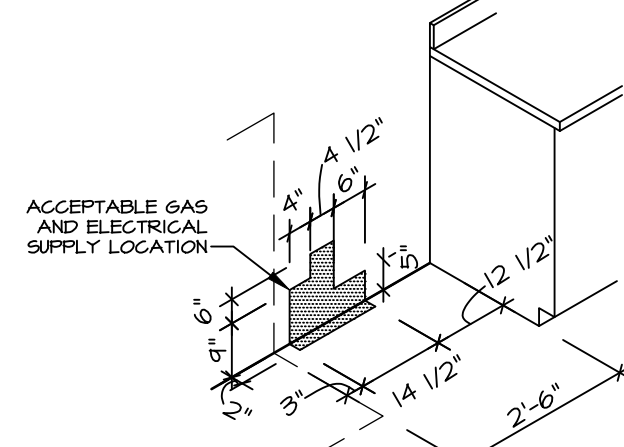
**NVR**

NVR, Inc. Suite 100  
5285 Westpark Drive  
Frederick, MD 21703

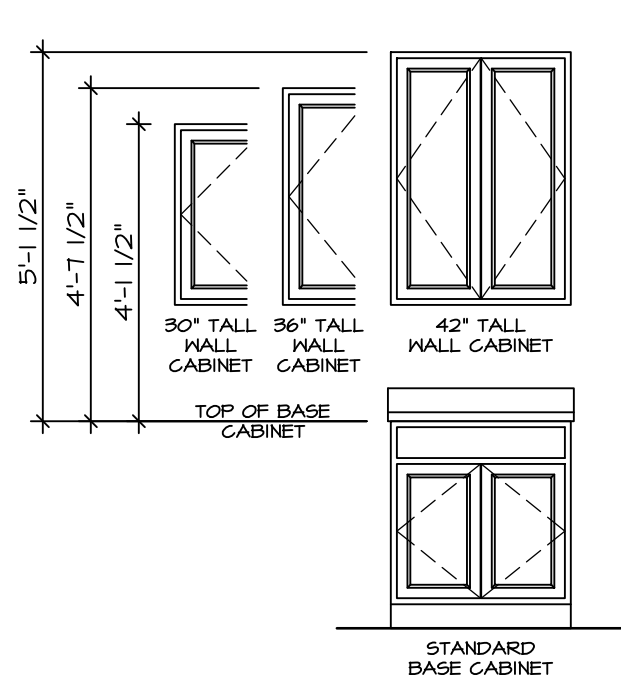
SET NO. NVR  
VERSION  
DRAWN BY  
DATE  
OPTION



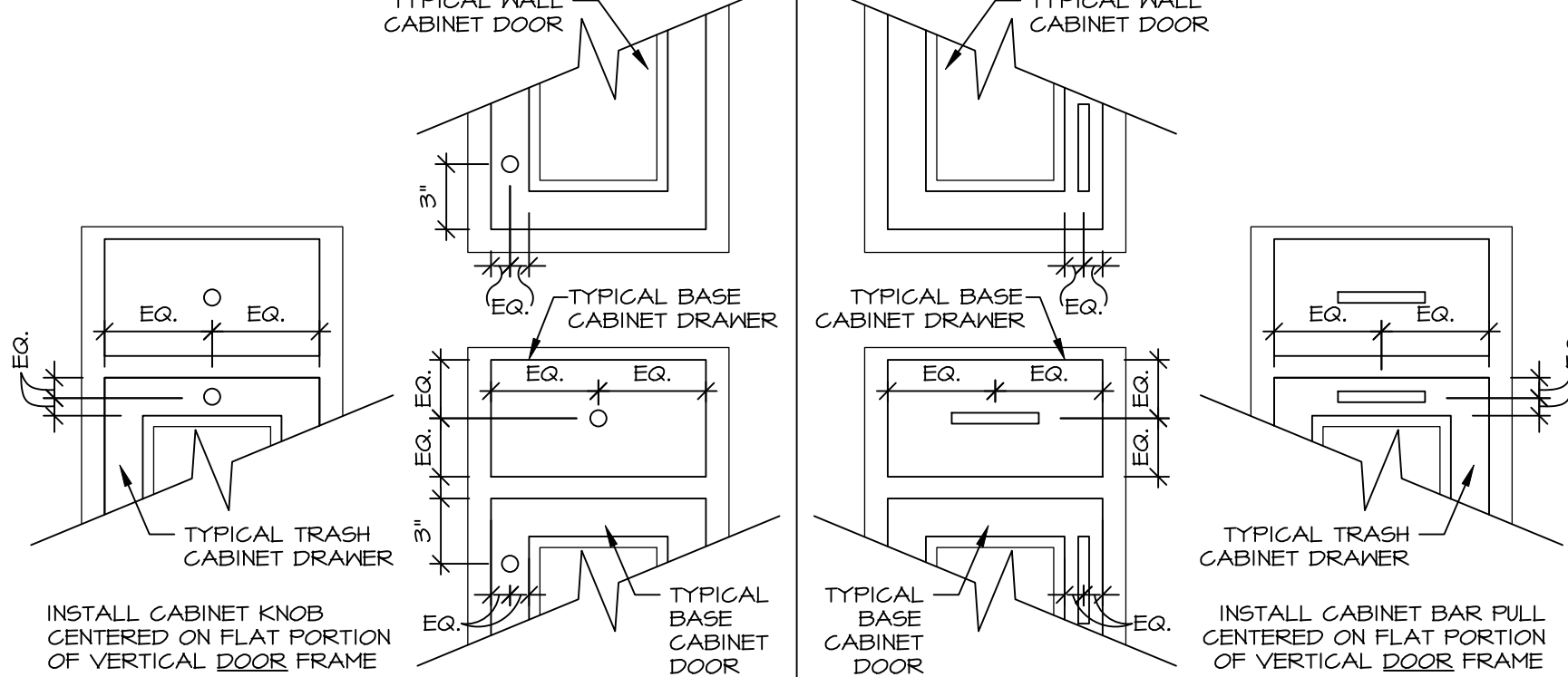
**1 MICROWAVE FILLER DETAIL**  
SCALE: 3/8" = 1'-0"



**2 SLIDE-IN RANGE GAS / ELEC. SUPPLY LOCATION**  
SCALE: 3/8" = 1'-0"

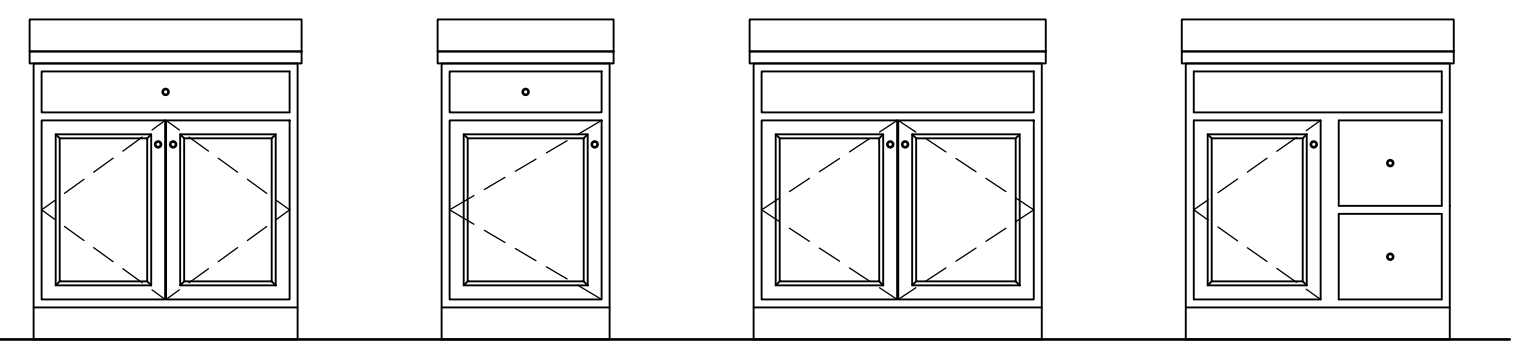


**3 WALL CABINET INSTALLATION HEIGHTS**  
SCALE: 3/8" = 1'-0"



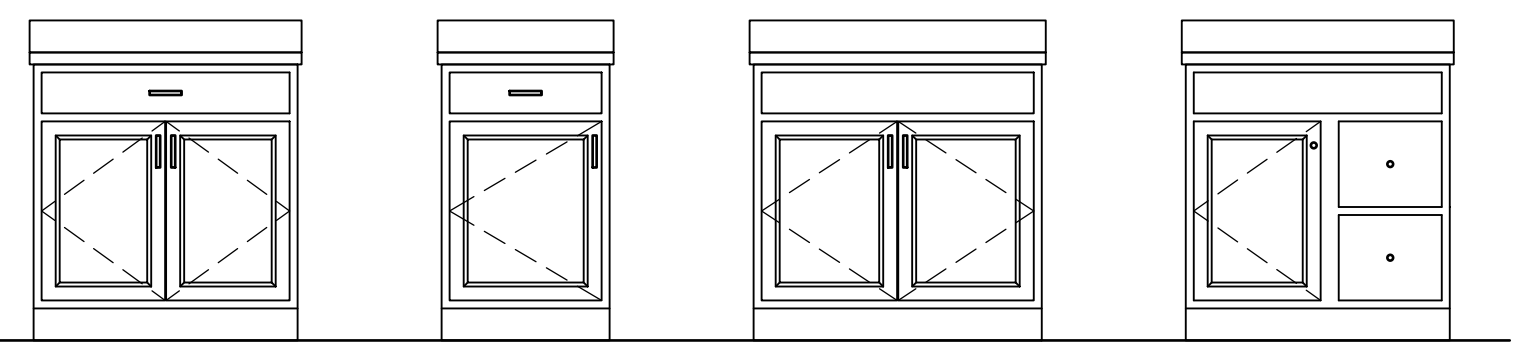
**4 CABINET PULL DETAILS**  
SCALE: 1-1/2" = 1'-0"

**KNOB**  
(TRADITIONAL OR CRAFTSMAN)



1-DRAWER, 2-DOOR | 1-DRAWER, 2-DOOR | SINK BASE (NOTE: NO HARDWARE ON FALSE FRONT) | VANITY COMBO SINK BASE (NOTE: NO HARDWARE ON FALSE FRONT / NON-OPERATIONAL DRAWER)

**BAR PULLS**  
(CONTEMPORARY)



1-DRAWER, 2-DOOR | 1-DRAWER, 2-DOOR | SINK BASE (NOTE: NO HARDWARE ON FALSE FRONT) | VANITY COMBO SINK BASE (NOTE: NO HARDWARE ON FALSE FRONT / NON-OPERATIONAL DRAWER)

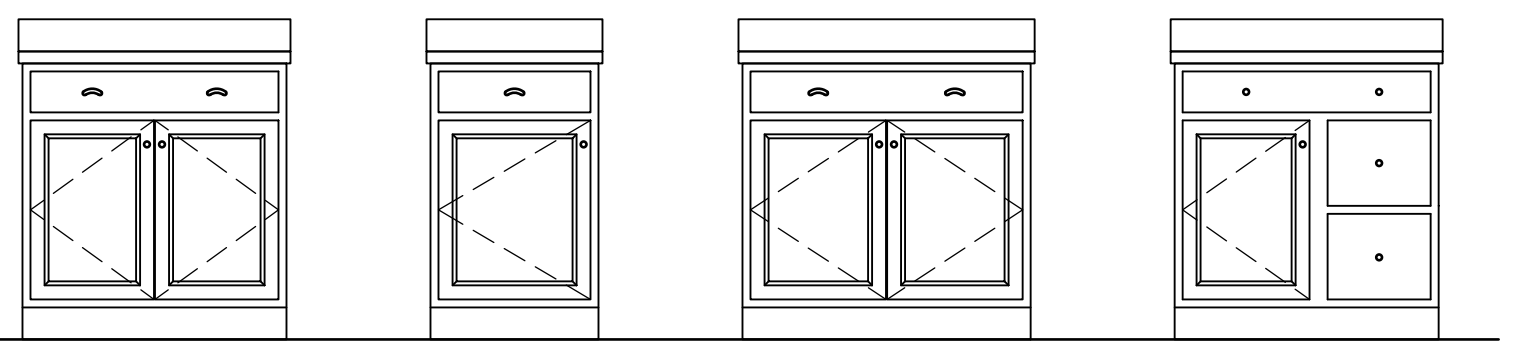
**RYAN CABINET HARDWARE SPECIFICATIONS**

		BATH	NON-BATH
TRADITIONAL	DOORS	ROUND KNOBS	ROUND KNOBS
	DRAWERS	ROUND KNOBS	ROUND KNOBS
CRAFTSMAN	DOORS	SQUARE KNOBS	SQUARE KNOBS
	DRAWERS	SQUARE KNOBS	SQUARE KNOBS
CONTEMPORARY*	DOORS	BAR PULLS	BAR PULLS
	DRAWERS	BAR PULLS	BAR PULLS

\* CABINET SELECTIONS CAN VARY WITHIN THE HOUSE  
 \* DOWNING AND MADDOX CABINETS THAT ARE 12" WIDE OR LESS WILL HAVE A KNOB IN LIEU OF BAR PULLS

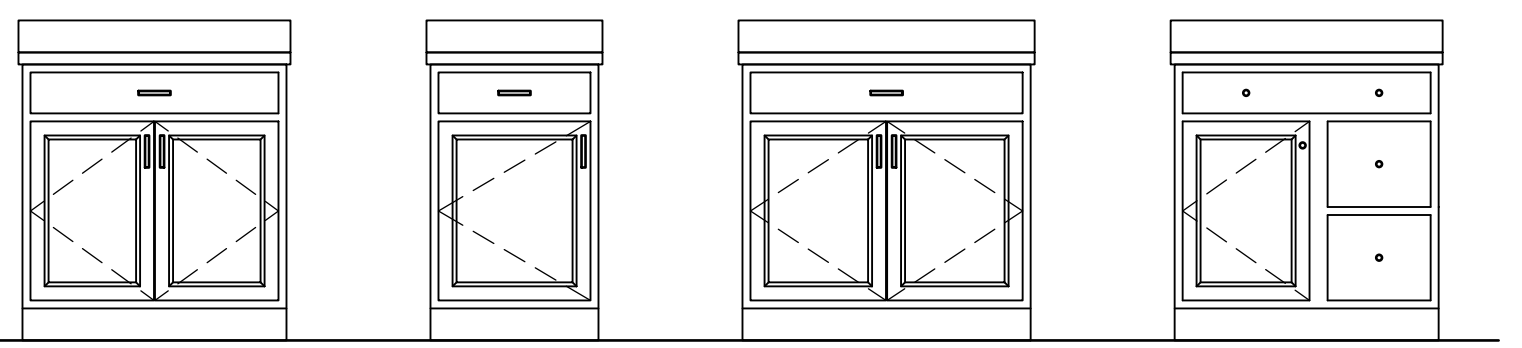
FALSE DOORS AND FALSE DRAWERS DO NOT RECEIVE HARDWARE

**KNOB**  
(TRADITIONAL OR CRAFTSMAN)



1-DRAWER, 2-DOOR | 1-DRAWER, 2-DOOR | SINK BASE | VANITY COMBO SINK BASE

**BAR PULLS**  
(CONTEMPORARY)



1-DRAWER, 2-DOOR | 1-DRAWER, 2-DOOR | SINK BASE | VANITY COMBO SINK BASE

**NV HOMES CABINET HARDWARE SPECIFICATIONS**

		BATH	NON-BATH
TRADITIONAL	DOORS	ROUND KNOBS	ROUND KNOBS
	DRAWERS AND FALSE DRAWERS	ROUND KNOBS	PULLS
CRAFTSMAN	DOORS	SQUARE KNOBS	SQUARE KNOBS
	DRAWERS AND FALSE DRAWERS	SQUARE KNOBS	SQUARE PULLS
CONTEMPORARY*	DOORS	SQUARE KNOBS	BAR PULLS
	DRAWERS AND FALSE DRAWERS	SQUARE KNOBS	BAR PULLS

\* NOT WITH SIERRA VISTA CABINETS

**NOTE:**  
HARDWARE IS INSTALLED ON ALL DOOR / DRAWER FRONTS (EVEN NON-OPERATIONAL FRONTS) DO NOT INSTALL HARDWARE ON DECORATIVE DOORS INSTALLED AT THE END OF CABINET RUNS.

**5 RYAN HARDWARE PLACEMENT GUIDELINES**

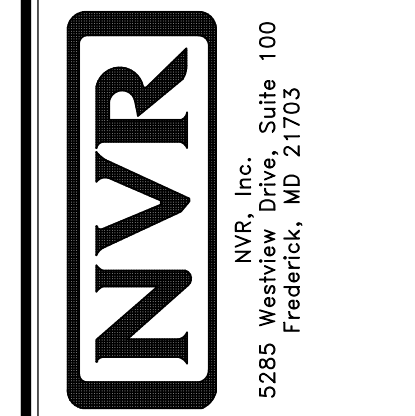
SCALE: 1/2" = 1'-0"

**6 NV HOMES HARDWARE PLACEMENT GUIDELINES**

SCALE: 1/2" = 1'-0"

REV. NO.	DATE	REMARKS
1	3/6/20	9PM - CREATED DETAILS 21 (GC 16/19) AND 28 (GC 16/17)
2	5/26/21	9PM - ADDED DETAILS 4, 5 & 6 / KT-1b (GC #1019)

NVR, Inc. expressly reserves its copyright in these plans. These plans are not to be reproduced, stored in a retrieval system, or transmitted in any form or by any means, electronic, mechanical, photocopying, recording, or by any information storage and retrieval system, without the prior written consent of NVR, Inc.



MODEL	SET NO. NVR
STANDARD DETAILS	VERSION
DRAWING TITLE	DRAWN BY
KITCHEN TRIM DETAILS	DATE:
GENERAL	OPTION
OPTION DESCRIPTION	