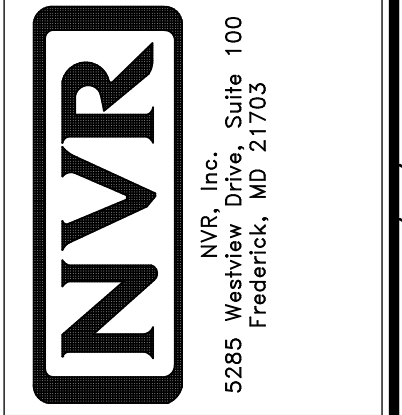


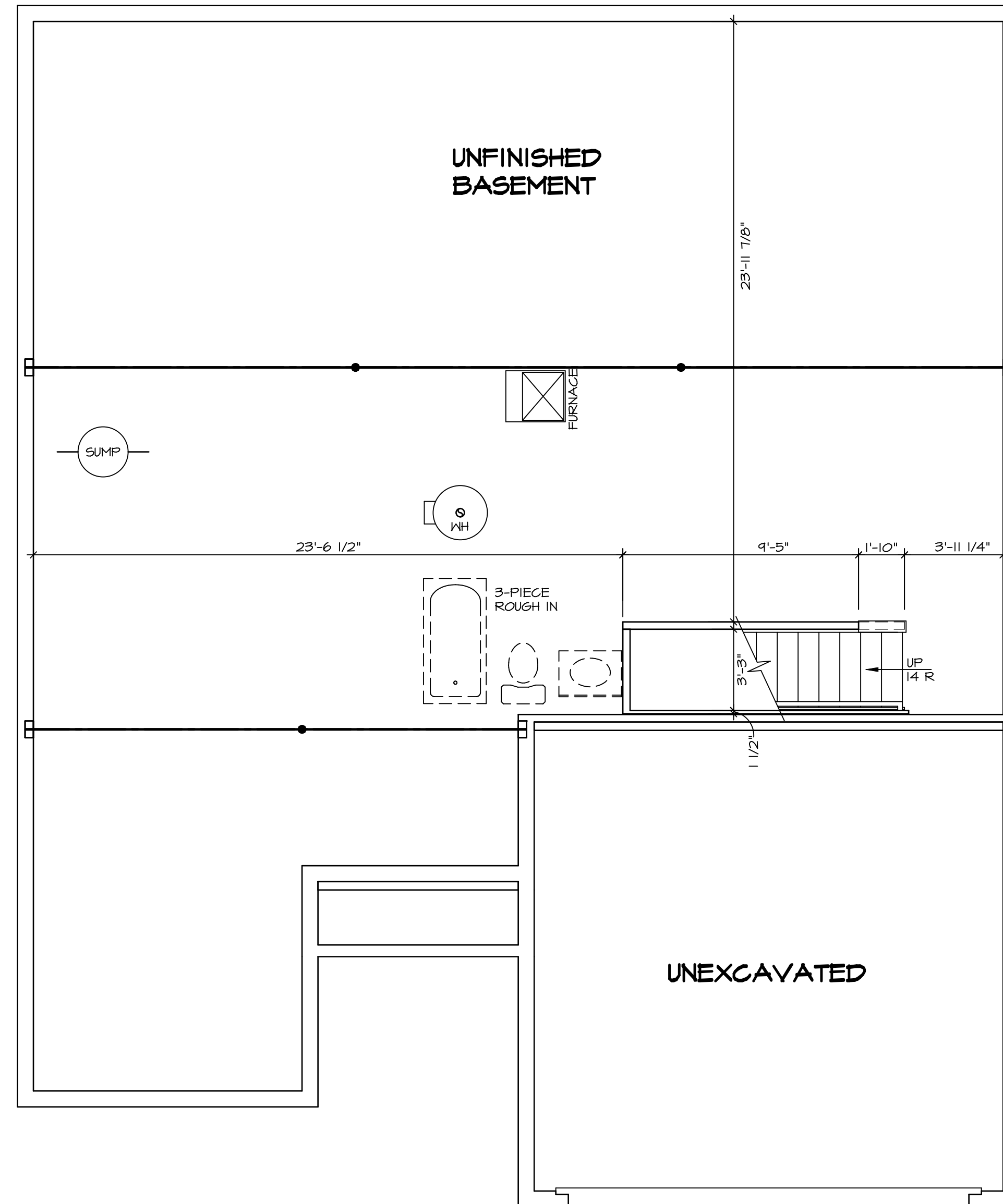
PLUMBING PLAN
SCALE: 1/4" = 1'-0"

| | | | |
|-------------------------|---------------------------------------|-------------------------|----------------------|
| SHEET NO. A-5 | MODEL GRAND BAHAMA | SET NO. 6EHO0 | VERSION 01 |
| | DRAWING TITLE PLUMBING PLAN | DRAWN BY | DATE: |
| | OPTION DESCRIPTION | OPTION | |



© NVR, Inc. expressly reserves the right to modify these plans without notice. These plans are not to be reproduced, changed or altered in any way without the written consent of NVR, Inc.

| | |
|----------------------------------------------------|---------------------|
| DIV-COMM-LOT-UNIT DCY-S3-0245 | |
| COMM-LOT 5MAYERS MILL - LIFESTYLE - 0245 | APT. NO. ---- |
| STREET ADDRESS 6696 CRYSTAL HARBOUR DR. | STATE OH |
| CITY MIDDLETOWN | ZIP 45042 |



LEGEND

- BEARING WALL
- NON BEARING WALL
- INDICATES BEARING FROM POINT-LOAD ABOVE
- JACKS
- BEAM-HEADER
- PAD FOOTING
- STEEL COLUMN
- TRUSS TIE DOWN
- PORTAL FRAME
- JOIST/TRUSS
- LVL
- ENGINEERING PAGE NUMBER

SEE FC DETAILS FOR FRAMING CONNECTORS

- FLOOR PLAN NOTES**
- ALL HEADERS ARE (2) 2x6 w/ 2x4 WALLS OR (3) 2x6 w/ 2x6 WALLS, UNLESS OTHERWISE NOTED.
 - ALL HEADERS TO HAVE (1) 2x4 OR 2x6 JACK AND KING STUD EACH END, UNLESS OTHERWISE NOTED. MULTI-OPENING HEADERS TO HAVE (2) JACKS AT INTERMEDIATE BEARING, UNLESS OTHERWISE NOTED. NO ADDITIONAL FLOOR SYSTEM BLOCKING OR CONTINUOUS LOAD PATH JACKS ARE REQUIRED UNLESS OTHERWISE NOTED.
 - ALL EXTERIOR WALLS TO BE 4" w/ OSB OR 3 1/2" w/ LAMINATED FIBROUS STRUCTURAL SHEATHING, ALL INTERIOR WALLS TO BE 3 1/2", UNLESS OTHERWISE NOTED. HATCHED AREAS INDICATE DROPPED CEILINGS. ALL DROPPED CEILINGS ARE 12" UNLESS OTHERWISE NOTED.
 - SEE "BRACED WALL PANEL DETAIL SHEET" FOR SPECIAL WALL FRAMING LOCATIONS AND HEADER SIZES, IF APPLICABLE.
 - SEE STANDARD DETAIL CATEGORY "1T" SHEET(S) FOR INTERIOR TRIM DETAILS.
 - SEE ARCHITECTURAL DETAIL SHEET "AD" FOR HOUSE WRAPS AND SUPPORTS PER STANDARD DETAIL FA-1(b) FIRE ASSEMBLIES OR AS REQUIRED BY LOCAL CODE.
 - ALL HEADERS IN NON-BEARING WALLS SHALL BE A SINGLE FLAT 2x4 OR 2x6 ATTACHED TO CRIPPLES ABOVE, UNLESS OTHERWISE NOTED.
 - TANKED WATER HEATER SHOWN AS BASE CONDITION. OPTIONAL TANKLESS WATER HEATER IS AVAILABLE IN LIEU OF TANKED WATER HEATER.

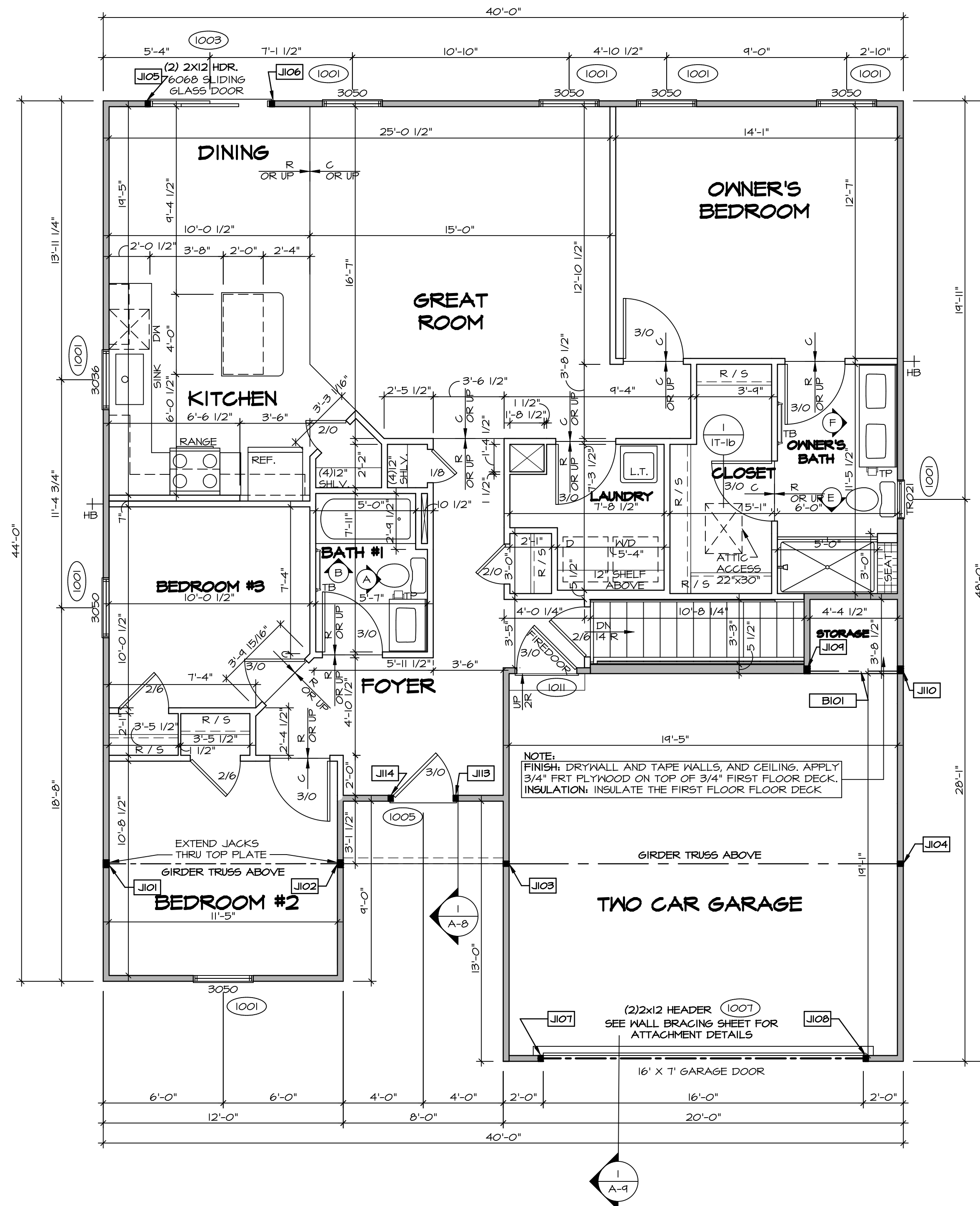
GYPSUM NOTES

AT GARAGE:
GYPSUM BOARD AT COMMON WALLS, CEILINGS, BEAM WRAPS AND SUPPORTS PER STANDARD DETAIL FA-1(b) FIRE ASSEMBLIES OR AS REQUIRED BY LOCAL CODE.

AT STAIRS:
1/2" GYPSUM BOARD AT UNDERSIDE OF STAIRS AND WALLS IN CLOSET

BASEMENT FLOOR PLAN
SCALE: 1/4" = 1'-0"

| | | | |
|--------------------------------------------------------------------------|-----------------------------------------------------------------------------|------------------------------------------------------------------------------------------------------------------------------------------------------------------------------------------------------------------|-------------------------------------------------------------------------------------------------------------------------------------------------------------------------------------------|
| SHEET NO. A-6 | MODEL GRAND BAHAMA DRAWING TITLE BASEMENT FLOOR PLAN | SET NO. 6BHO0 VERSION 01 DRAWN BY DATE: OPTION | DIV-COMM-LOT-UNIT DCY-S3-0245 COMM-LOT 5MAYERS MILL - LIFESTYLE - 0245 STREET ADDRESS 6696 CRYSTAL HARBOUR DR. CITY MIDDLETOWN STATE OH ZIP 45042 |
| NVR, Inc. 5285 Washington Blvd., Suite 100 Frederick, MD 21703 | | © NVR, Inc. expressly reserves the right to modify or amend these plans at any time without notice. These plans are not to be reproduced, changed or altered in any way without the written consent of NVR, Inc. | |
| 1 A-6 | | C:\NVR\Solves\GRAND_BAHAMA_6BHO0_01\DCY-S3-0245\2457157\Sheets\Lot_Specific\A_6-A-6_BSMT_LS.dwg 01/26/22 - 3:45 pm | |



FIRST FLOOR PLAN
SCALE: 1/4" = 1'-0"

| FIRST FLOOR JACK SCHEDULE | | | |
|---------------------------|-------------------------------|-----------|-----------------------|
| IDENTIFIER | DESCRIPTION | ENG. NUM. | REMARKS |
| J101 | JACK - (3) 2X4 SP#1 | 1000 | EXTEND THRU TOP PLATE |
| J102 | JACK - (3) 2X4 SP#1 | 1000 | EXTEND THRU TOP PLATE |
| J103 | JACK - (2) 2X4 SP# STUD GRADE | 1000 | |
| J104 | JACK - (2) 2X4 SP# STUD GRADE | 1000 | |
| J105 | JACK - (2) 2X4 SP# STUD GRADE | 1003 | |
| J106 | JACK - (2) 2X4 SP# STUD GRADE | 1003 | |
| J107 | JACK - (2) 2X4 SP# STUD GRADE | 1007 | |
| J108 | JACK - (2) 2X4 SP# STUD GRADE | 1007 | |
| J109 | JACK - (3) 2X4 SP# STUD GRADE | 1013 | |
| J110 | JACK - (3) 2X4 SP# STUD GRADE | 1013 | |
| J111 | JACK - (2) 2X4 SP# STUD GRADE | 1005 | |
| J112 | JACK - (2) 2X4 SP# STUD GRADE | 1005 | |

LVL PLY TO PLY FASTENING SCHEDULE: (WHERE APPLICABLE BASED ON LVL USAGE)

1.A - (2) PLY UP TO AND INCLUDING 11 7/8" TALL; FASTEN PLYS W/ (2) ROWS 16D NAILS AT 12" O.C.
 2.A - (2) PLY 14" TO AND 18" TALL (INCLUSIVE); FASTEN PLYS W/ (3) ROWS 16D NAILS AT 12" O.C.
 3.A - (2) PLY 20" TALL AND OVER; FASTEN PLYS W/ (4) ROWS 16D NAILS AT 12" O.C.
 4.A - (3) PLY UP TO AND INCLUDING 11 7/8" TALL; FASTEN PLYS W/ (2) ROWS 16D NAILS AT 12" O.C. FROM EACH SIDE
 5.A - (3) PLY 14" TO AND 18" TALL (INCLUSIVE); FASTEN PLYS W/ (3) ROWS 16D NAILS AT 12" O.C. FROM EACH SIDE
 6.A - (3) PLY 20" TALL AND OVER; FASTEN PLYS W/ (4) ROWS 16D NAILS AT 12" O.C. FROM EACH SIDE
 7.A - (4) PLY (ALL SIZES); FASTEN PLYS W/ (2) ROWS 1/2" DIAMETER A307 BOLTS AT 24" O.C.
 SEE SHOP DRAWING FOR ADDITIONAL INFORMATION.

| FIELD INSTALLED FIRST FLOOR BEAM/HEADER SCHEDULE | | | | |
|--------------------------------------------------|---------------------------|------------|-----------|---------|
| IDENTIFIER | DESCRIPTION | LENGTH | ENG. NUM. | REMARKS |
| B101 | INT HEADER - 2X10 - 2 PLY | 4'-11 1/2" | 1013 | |

LEGEND

- BEARING WALL
- NON BEARING WALL
- INDICATES BEARING FROM POINT-LOAD ABOVE JACKS
- BEAM/HEADER
- PAD FOOTING
- STEEL COLUMN
- TRUSS TIE DOWN
- PORTAL FRAME
- JOIST/TRUSS
- LVL
- ENGINEERING PAGE NUMBER

SEE FC DETAILS FOR FRAMING CONNECTORS

- FLOOR PLAN NOTES** RYAN
- ALL HEADERS ARE (2) 2x6 W/ 2x4 WALLS OR (3) 2x6 W/ 2x6 WALLS, UNLESS OTHERWISE NOTED.
 - ALL HEADERS TO HAVE (1) 2x4 OR 2x6 JACK AND KING STUD EACH END, UNLESS OTHERWISE NOTED. MULTI-OPENING HEADERS TO HAVE (2) JACKS AT INTERMEDIATE BEARING, UNLESS OTHERWISE NOTED. NO ADDITIONAL FLOOR SYSTEM BLOCKING OR CONTINUOUS LOAD PATH JACKS ARE REQUIRED UNLESS OTHERWISE NOTED.
 - ALL EXTERIOR WALLS TO BE 4" W/ OSB OR 3 1/2" W/ LAMINATED FIBROUS STRUCTURAL SHEATHING, ALL INTERIOR WALLS TO BE 3 1/2", UNLESS OTHERWISE NOTED.
 - HATCHED AREAS INDICATE DROPPED CEILINGS. ALL DROPPED CEILINGS ARE 12" UNLESS OTHERWISE NOTED.
 - SEE "BRACED WALL PANEL DETAIL SHEET" FOR SPECIAL WALL FRAMING LOCATIONS AND HEADER SIZES, IF APPLICABLE.
 - SEE STANDARD DETAIL CATEGORY "IT" SHEET(S) FOR INTERIOR TRIM DETAILS.
 - SEE ARCHITECTURAL DETAIL SHEET "AD" FOR HOUSE SPECIFIC INTERIOR TRIM OPTION TABLE.
 - ALL HEADERS IN NON-BEARING WALLS SHALL BE A SINGLE FLAT 2X4 OR 2X6 ATTACHED TO CRIPPLES ABOVE, UNLESS OTHERWISE NOTED.
 - TANKED WATER HEATER SHOWN AS BASE CONDITION. OPTIONAL TANKLESS WATER HEATER IS AVAILABLE IN LIEU OF TANKED WATER HEATER.

GYPSUM NOTES

AT GARAGE:
GYPSUM BOARD AT COMMON WALLS, CEILINGS, BEAM WRAPS AND SUPPORTS PER STANDARD DETAIL FA-1(b) FIRE ASSEMBLIES OR AS REQUIRED BY LOCAL CODE.

AT STAIRS:
1/2" GYPSUM BOARD AT UNDERSIDE OF STAIRS AND WALLS IN CLOSET

DIV-COMM-LOT-UNIT
DCY-S3-0245
 COMM-LOT
 SANYERS MILL - LIFESTYLE - 0245
 STREET ADDRESS
 6699 CRYSTAL HARBOUR DR.
 CITY MIDDLETOWN STATE OH ZIP 45042

© NVR, Inc. expressly reserves the right to modify or amend these plans without notice. These plans are not to be reproduced, changed or altered in any way without the written consent of NVR, Inc.

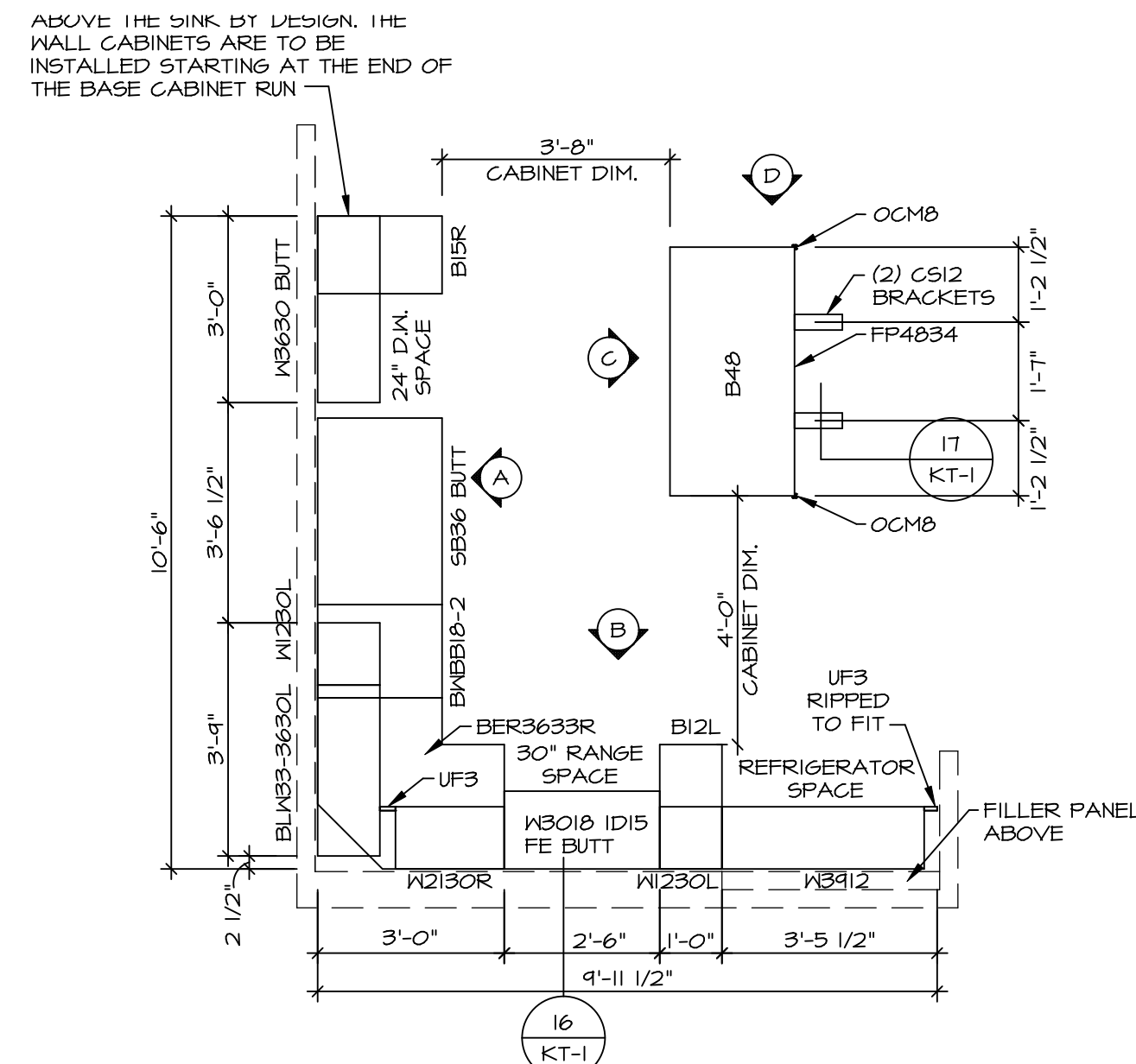
NVR
 NVR, Inc. Suite 100
 5285 Washington Blvd.
 Frederick, MD 21703

SET NO. GBH00
 VERSION 01
 DRAWN BY
 DATE:
 OPTION

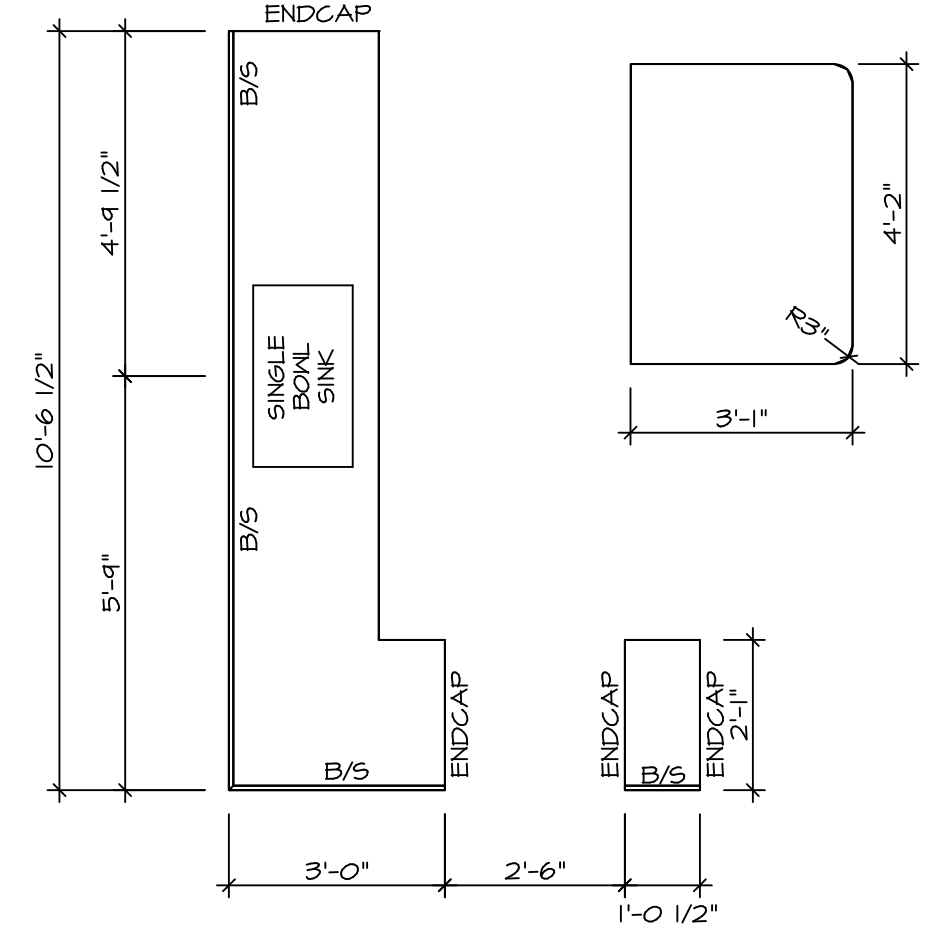
GRAND BAHAMA
 DRAWING TITLE
A-7 FIRST FLOOR PLAN
 OPTION DESCRIPTION
 10

C:\NVR\Solves\GRAND_BAHAMA_GBH00_01\DCY-S3-0245\2457157A\Sheets\01 A-7 PLAN_LS.dwg 01/26/22 - 3:46 pm

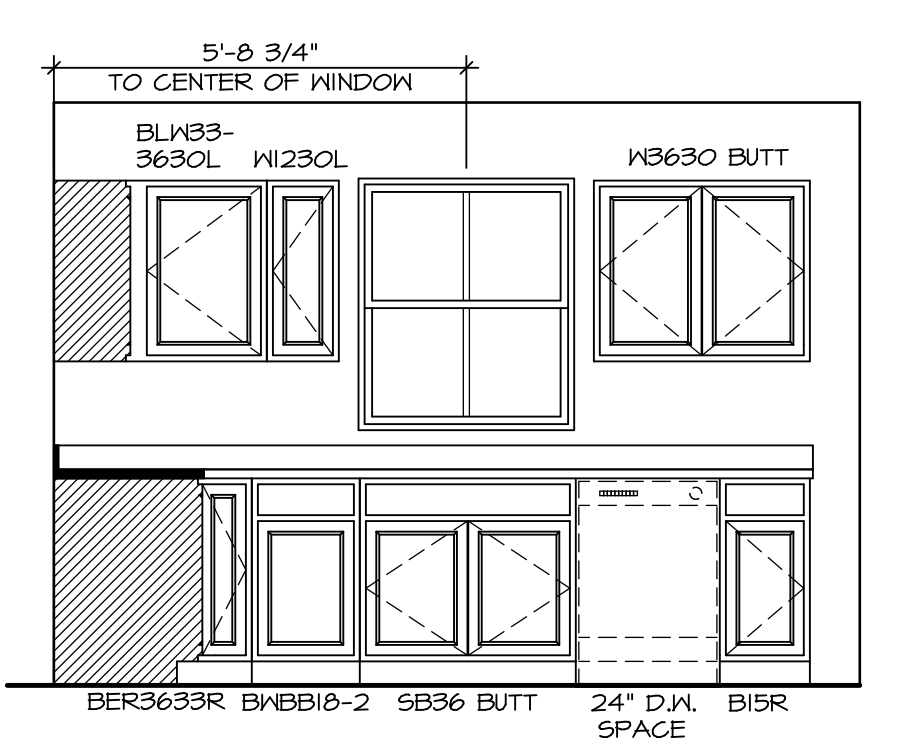
- NOTES:**
- CABINET LAYOUT (S) ARE BASED ON FINISHED DIMENSIONS TO DRYWALL.
 - IF KITCHEN PLANS/ELEVATIONS CALL-OUT STANDARD MOLDING, REFER TO STANDARD DETAIL (11KT-1) FOR REPLACEMENT BASED ON CABINET STYLE.
 - ALL (UFR) FILLERS ARE TO BE "TRIM TO FIT" UNLESS OTHERWISE NOTED.
 - CABINET MUST BE SET SHIMMED, LEVELED AND FLUSH BY ADJOINING BASE CABINETS.
 - SET PRE-FINISHED SCRIBE MOLDING AT CABINET BULKHEADS AND AT ENDS (WHERE CABINETS MEET DRYWALL.) PRE-FINISHED SCRIBE MOLDING SHALL BE USED TO PAD OUT CABINET SIDES AT STILE FOR RETURN PIECES OF THE FACE-MOUNTED CABINET CROWN MOLDING.
 - HARDWARE INSTALL NOTE: KNOBS GO ON OPERABLE DOORS AND DRAWERS FOR ALL KITCHEN AND BATH AREAS. DRAWER FRONTS AND DOORS GET (1) KNOB/PULL, NO HARDWARE ON FALSE DRAWER FRONTS.



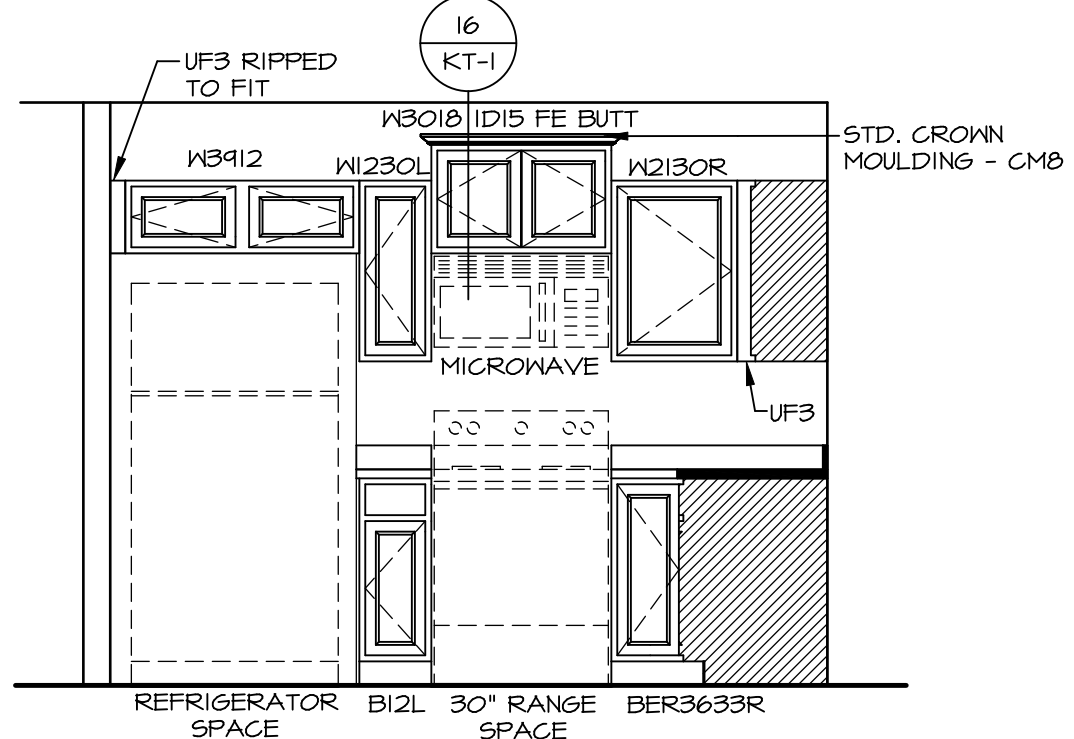
1 KITCHEN CABINET PLAN / KC-3765
SCALE: 3/8" = 1'-0"



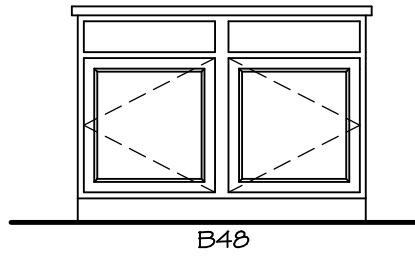
2 KITCHEN COUNTERTOP PLAN KC-3765
SCALE: 3/8" = 1'-0"



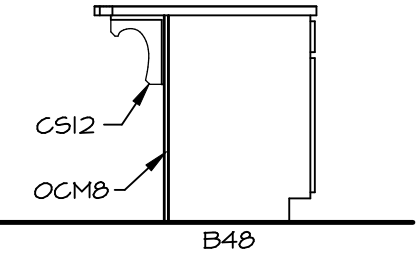
A KITCHEN ELEVATION
SCALE: 3/8" = 1'-0"



B KITCHEN ELEVATION
SCALE: 3/8" = 1'-0"

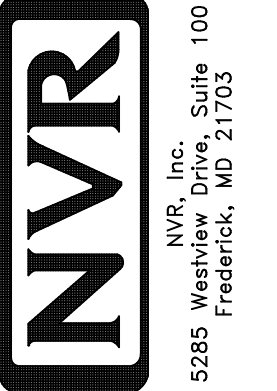


C KITCHEN ELEVATION
SCALE: 3/8" = 1'-0"



D KITCHEN ELEVATION
SCALE: 3/8" = 1'-0"

© NVR, Inc. expressly reserves the right to modify these plans without notice. These plans are not to be reproduced, changed or altered in any way without the written consent of NVR, Inc.

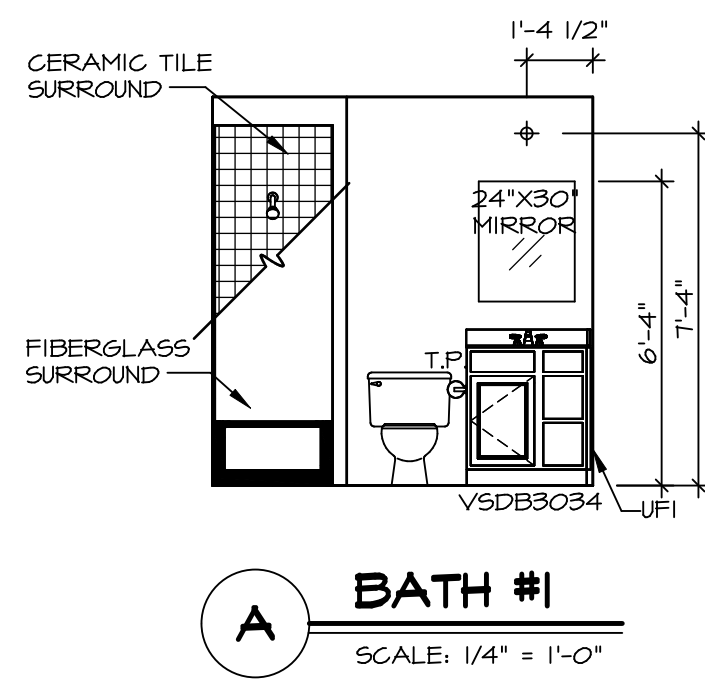


SET NO. 6BH00
VERSION 01
DRAWN BY
DATE:
OPTION

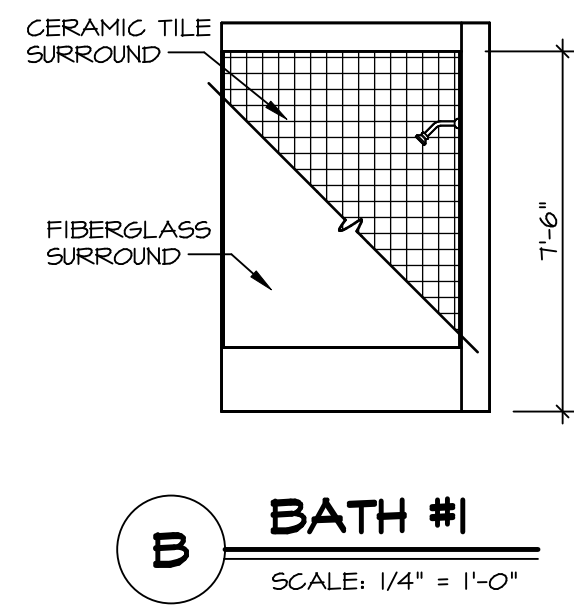
MODEL
GRAND BAHAMA
DRAWING TITLE
KITCHENS
OPTION DESCRIPTION

SHEET NO.
A-11
14

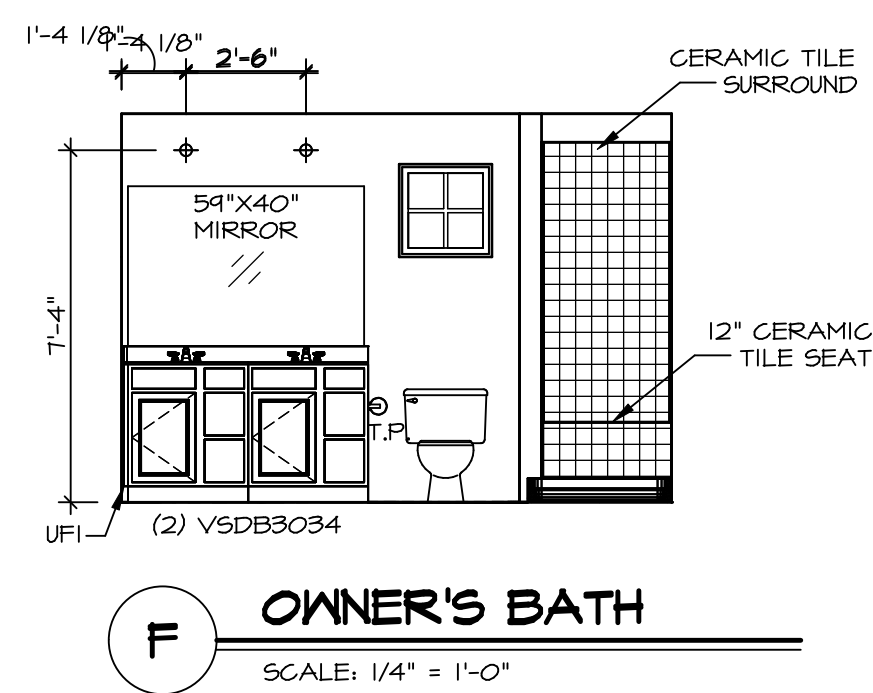
DIV-COMM-LOT-UNIT
DCY-S3-0245
COMM-LOT
5MAYERS MILL - LIFESTYLE - 0245
STREET ADDRESS
6688 CRYSTAL HARBOUR DR.
CITY MIDDLETOWN STATE OH ZIP 45042



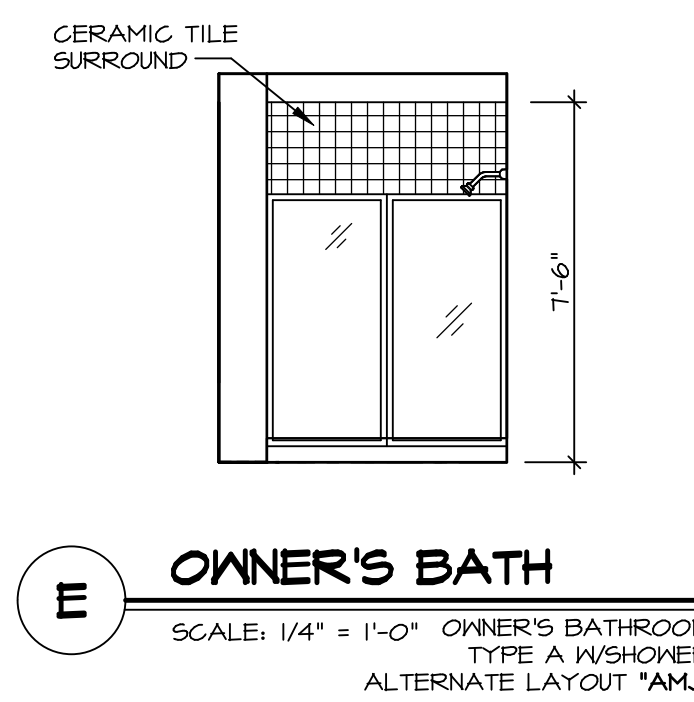
A BATH #1
SCALE: 1/4" = 1'-0"



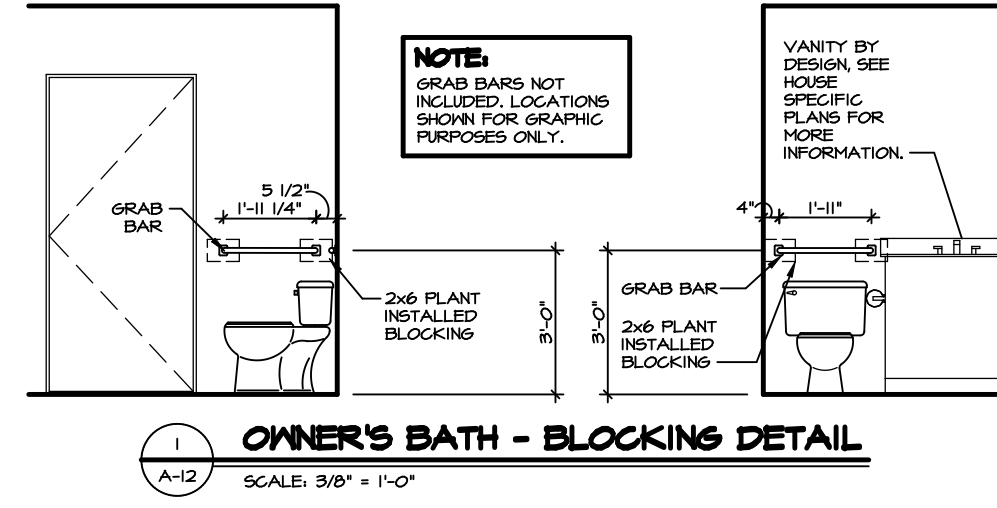
B BATH #1
SCALE: 1/4" = 1'-0"



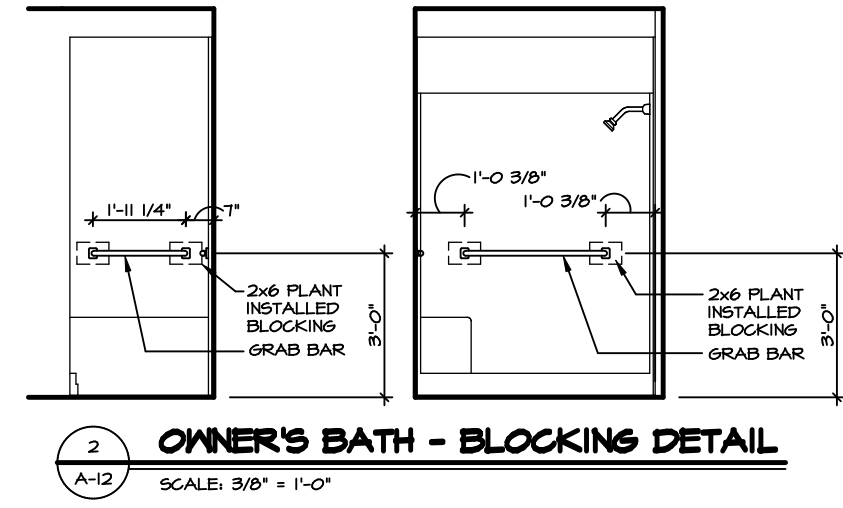
F OWNER'S BATH
SCALE: 1/4" = 1'-0"



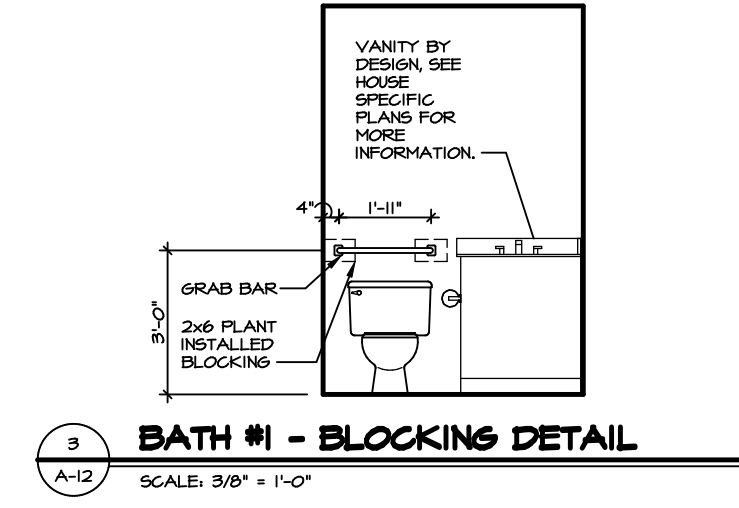
E OWNER'S BATH
SCALE: 1/4" = 1'-0" OWNER'S BATHROOM TYPE A W/SHOWER ALTERNATE LAYOUT "AM1"



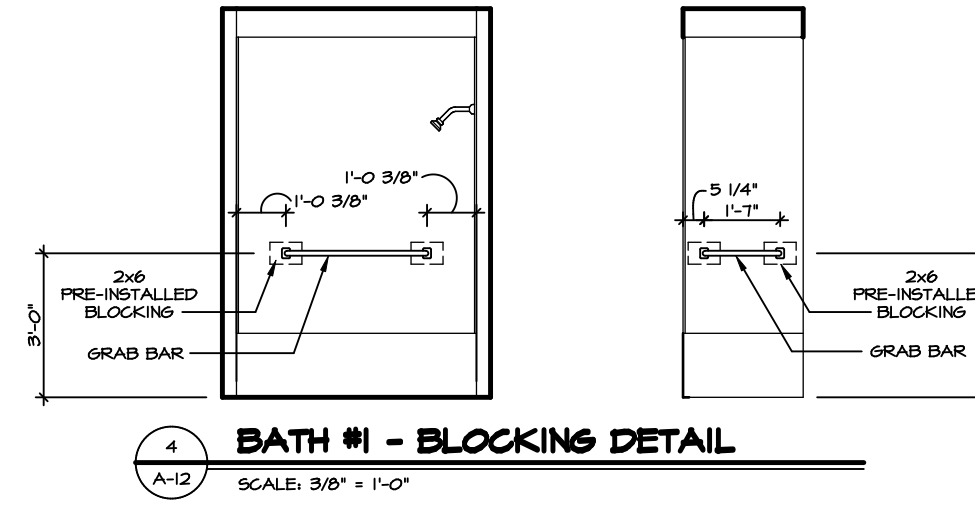
1 OWNER'S BATH - BLOCKING DETAIL
SCALE: 3/8" = 1'-0"



2 OWNER'S BATH - BLOCKING DETAIL
SCALE: 3/8" = 1'-0"



3 BATH #1 - BLOCKING DETAIL
SCALE: 3/8" = 1'-0"



4 BATH #1 - BLOCKING DETAIL
SCALE: 3/8" = 1'-0"

NOTES:

1. TEMPERED GLASS SHOWER ENCLOSURE WITH SWING DOOR OR OPTIONAL SLIDING DOOR BY DIVISION.
2. TUB ACCESS PANELS PROVIDED AS NEEDED, ALL MATERIALS BY DIVISION.
3. ALL BATH ELEVATIONS SHOWN PER PLAN.
4. ALL V5DB24-42 DRAWERS TO BE SET ON RIGHT HAND.

| | | | |
|--------------------------|---------------------------------------------------------------------------------------------------------------------------------------------------------------------------------------------|----------------------|-------------------|
| SHEET NO. A-12 | MODEL GRAND BAHAMA | SET NO. GBH00 | VERSION 01 |
| | DRAWING TITLE BATH ELEVATIONS | DRAWN BY | DATE: |
| 15 | OPTION DESCRIPTION | OPTION | |
| | DIV-COMM-LOT-UNIT DCY-S3-0245 COMM-LOT SAVERYERS MILL - LIFESTYLE - 0245 STREET ADDRESS 6699 CRYSTAL HARBOUR DR. CITY MIDDLETOWN STATE OH ZIP 45042 | | |

© NVR, Inc. expressly reserves the right to modify or change these plans without notice. These plans are not to be reproduced, changed or altered in any way without the written consent of NVR, Inc.

