

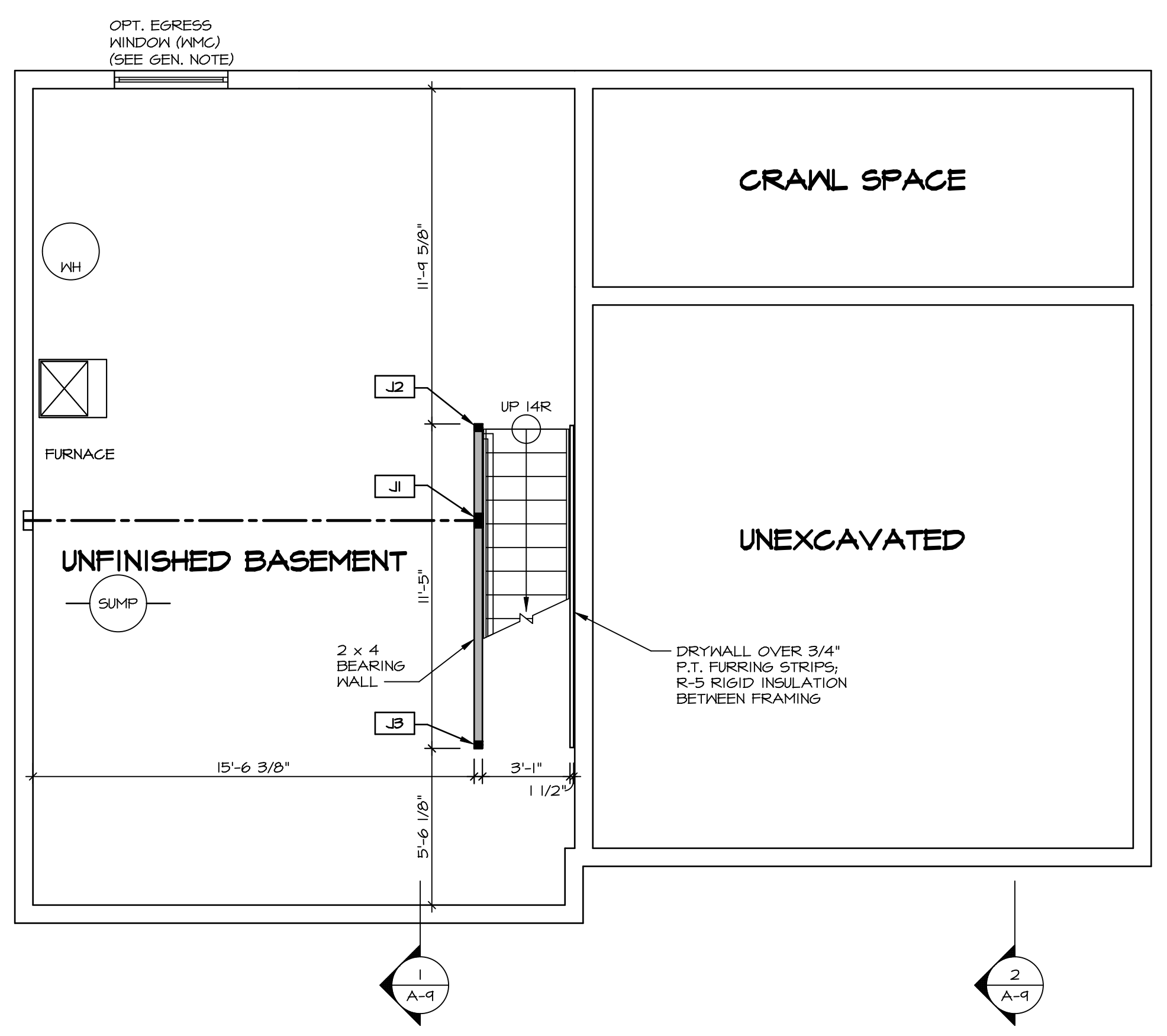
BASEMENT FLOOR SCHEDULES

BASEMENT JACK SCHEDULE				
IDENTIFIER	DESCRIPTION	OPTIONS	ENG. NUM.	REMARKS
J1	JACK - (4) 2X4 SFF STUD GRADE		B0010	
J2	JACK - (2) 2X4 SFF STUD GRADE		B0003	
J3	JACK - (2) 2X4 SFF STUD GRADE		B0003	

LEGEND	
	BEARING WALL
	NON BEARING WALL
	INDICATES BEARING FROM POINT-LOAD ABOVE
	JACKS
	BEAM/HEADER
	PAD FOOTING
	STEEL COLUMN
	PORTAL FRAME
	JOIST/TRUSS
	LVL
	ENGINEERING PAGE NUMBER

- FLOOR PLAN NOTES**
- ALL HEADERS ARE (2) 2x6 w/ 2x4 WALLS OR (3) 2x6 w/ 2x6 WALLS, UNLESS OTHERWISE NOTED.
 - ALL HEADERS TO HAVE (1) 2x4 OR 2x6 JACK AND KING STUD EACH END, UNLESS OTHERWISE NOTED.
 - ALL EXTERIOR WALLS TO BE 4" w/ OSB OR 3 1/2" w/ LAMINATED FIBROUS STRUCTURAL SHEATHING. ALL INTERIOR WALLS TO BE 3 1/2", UNLESS OTHERWISE NOTED.
 - HATCHED AREAS INDICATE DROPPED CEILINGS. ALL DROPPED CEILINGS ARE 12" UNLESS OTHERWISE NOTED.
 - SEE "BRACED WALL PANEL DETAIL SHEET" FOR SPECIAL WALL FRAMING LOCATIONS AND HEADER SIZES, IF APPLICABLE.
 - SEE STANDARD DETAIL CATEGORY "IT" SHEET(S) FOR INTERIOR TRIM DETAILS.
 - SEE ARCHITECTURAL DETAIL SHEET "AD" FOR HOUSE SPECIFIC INTERIOR TRIM OPTION TABLE.
 - ALL WINDOWS HAVE 7'-0 1/2" HEADER HEIGHT UNLESS OTHERWISE NOTED.
 - ALL HEADERS IN NON-BEARING WALLS SHALL BE A SINGLE FLAT 2X4 OR 2X6 ATTACHED TO CRIPPLES ABOVE, UNLESS OTHERWISE NOTED.
 - TANKED WATER HEATER SHOWN AS BASE CONDITION. OPTIONAL TANKLESS WATER HEATER IS AVAILABLE IN LIEU OF TANKED WATER HEATER.

- GYPSUM NOTES**
- AT GARAGE:
 GYPSUM BOARD AT COMMON WALLS, CEILINGS, BEAM WRAPS AND SUPPORTS PER STANDARD DETAIL FA-1(b) FIRE ASSEMBLIES OR AS REQUIRED BY LOCAL CODE.
- AT STAIRS:
 1/2" GYPSUM BOARD AT UNDERSIDE OF STAIRS AND WALLS IN CLOSET



BASEMENT FLOOR PLAN
 SCALE: 1/4" = 1'-0"

SHEET NO. A-6	MODEL PLAN 1918	SET NO. P1918	REVISIONS	REMARKS
	DRAWING TITLE BASEMENT FLOOR PLAN	VERSION 02	DATE	
	OPTION DESCRIPTION	DRAWN BY CSE	1	7/27/16 TN - DRAWING ALIGNMENT
		DATE:	2	9/14/17 RPB - UPDATED FLOOR PLAN NOTES
		OPTION		

NVR
 NVR, Inc. Suite 100
 5285 Westchase Lane
 Frederick, MD 21703

© NVR, Inc. expressly reserves the right to modify or amend these plans at any time without notice. These plans are not to be reproduced, changed or altered in any way without the written consent of NVR, Inc.

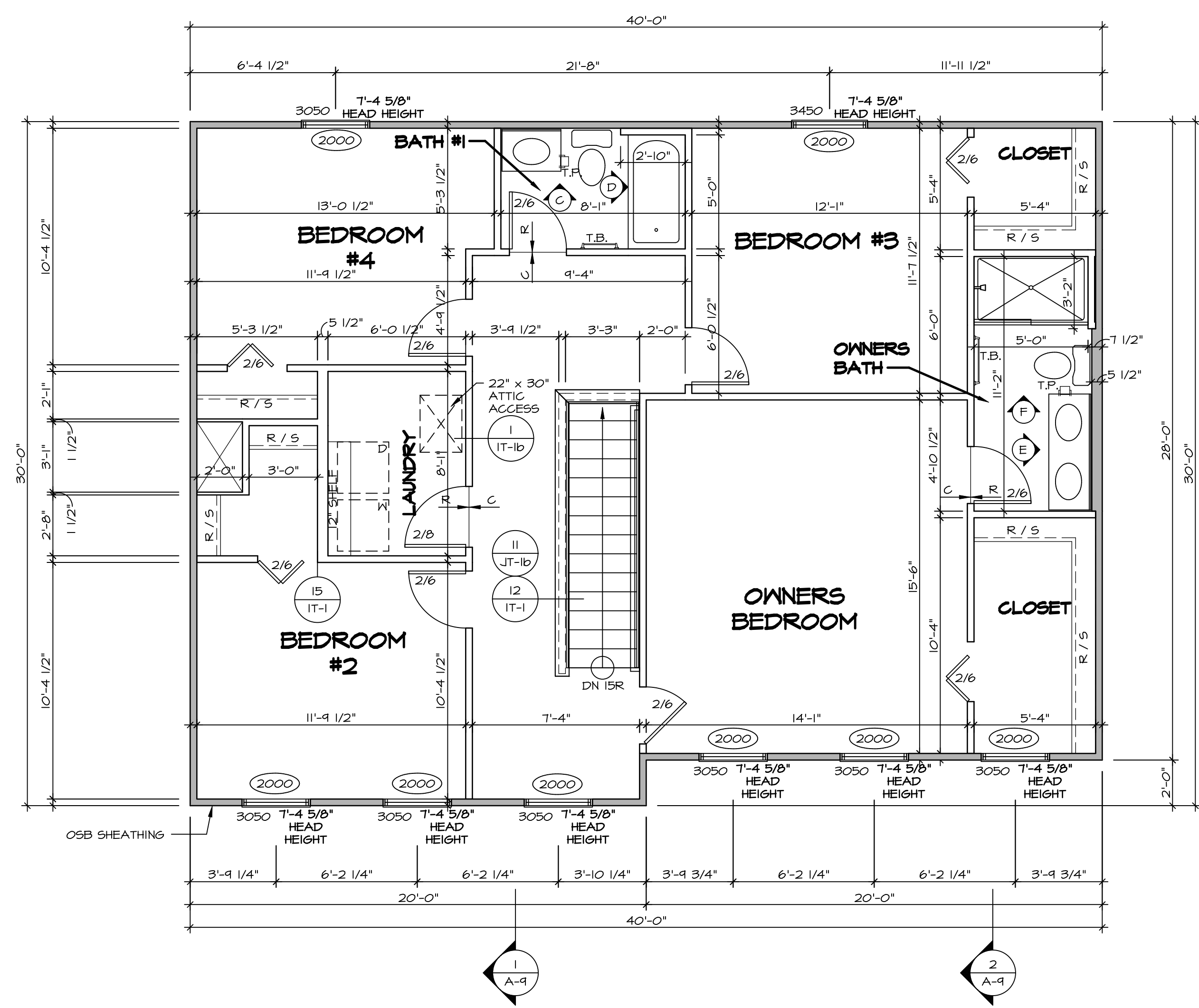
LEGEND

	BEARING WALL
	NON BEARING WALL
	INDICATES BEARING FROM POINT-LOAD ABOVE
	JACKS
	BEAM/HEADER
	PAD FOOTING
	STEEL COLUMN
	PORTAL FRAME
	JOIST/TRUSS
	LVL
	ENGINEERING PAGE NUMBER

SEE FC DETAILS FOR FRAMING CONNECTORS

- FLOOR PLAN NOTES** RYAN
- ALL HEADERS ARE (2) 2x6 w/ 2x4 WALLS OR (3) 2x6 w/ 2x6 WALLS, UNLESS OTHERWISE NOTED.
 - ALL HEADERS TO HAVE (1) 2x4 OR 2x6 JACK AND KING STUD EACH END, UNLESS OTHERWISE NOTED.
 - ALL EXTERIOR WALLS TO BE 4" w/ OSB OR 3 1/2" w/ T-PLY, ALL INTERIOR WALLS TO BE 3 1/2", UNLESS OTHERWISE NOTED.
 - HATCHED AREAS INDICATE DROPPED CEILINGS. ALL DROPPED CEILINGS ARE 12" UNLESS OTHERWISE NOTED.
 - SEE "BRACED WALL PANEL DETAIL SHEET" FOR SPECIAL WALL FRAMING LOCATIONS AND HEADER SIZES, IF APPLICABLE.
 - SEE STANDARD DETAIL CATEGORY "IT" SHEET(S) FOR INTERIOR TRIM DETAILS.
 - SEE ARCHITECTURAL DETAIL SHEET "AD" FOR HOUSE SPECIFIC INTERIOR TRIM OPTION TABLE.
 - ALL WINDOWS HAVE T-0 1/2" HEADER HEIGHT UNLESS OTHERWISE NOTED.
 - ALL HEADERS IN NON-BEARING WALLS SHALL BE A SINGLE FLAT 2x4 OR 2x6 ATTACHED TO CRIPPLES ABOVE, UNLESS OTHERWISE NOTED.
 - TANKED WATER HEATER SHOWN AS BASE CONDITION, OPTIONAL TANKLESS WATER HEATER IS AVAILABLE IN LIEU OF TANKED WATER HEATER.

NOTE:
WINDOW HEADER HEIGHT AT T-4 5/8" UNLESS OTHERWISE NOTED

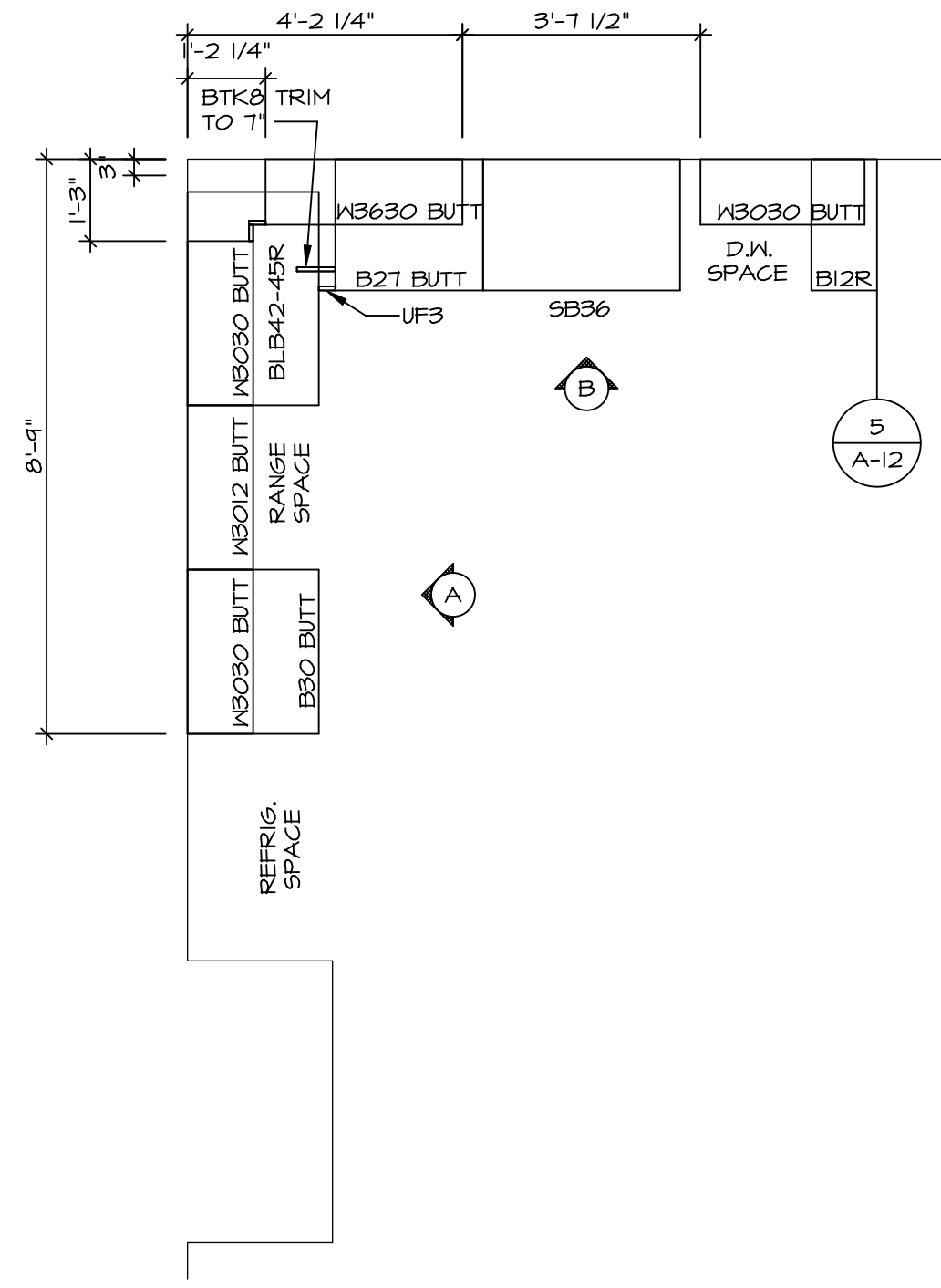


1 SECOND FLOOR PLAN
SCALE: 1/4" = 1'-0"

SHEET NO. A-8	MODEL PLAN 1918	SET NO. P1918	REMARKS
	DRAWING TITLE SECOND FLOOR PLAN	VERSION 02	
OPTION DESCRIPTION 19	DRAWN BY CSB	DATE:	REV. NO. DATE DESCRIPTION
	OPTION		
			2 8/7/17 BRN - UPDATED FLOOR PLAN NOTES

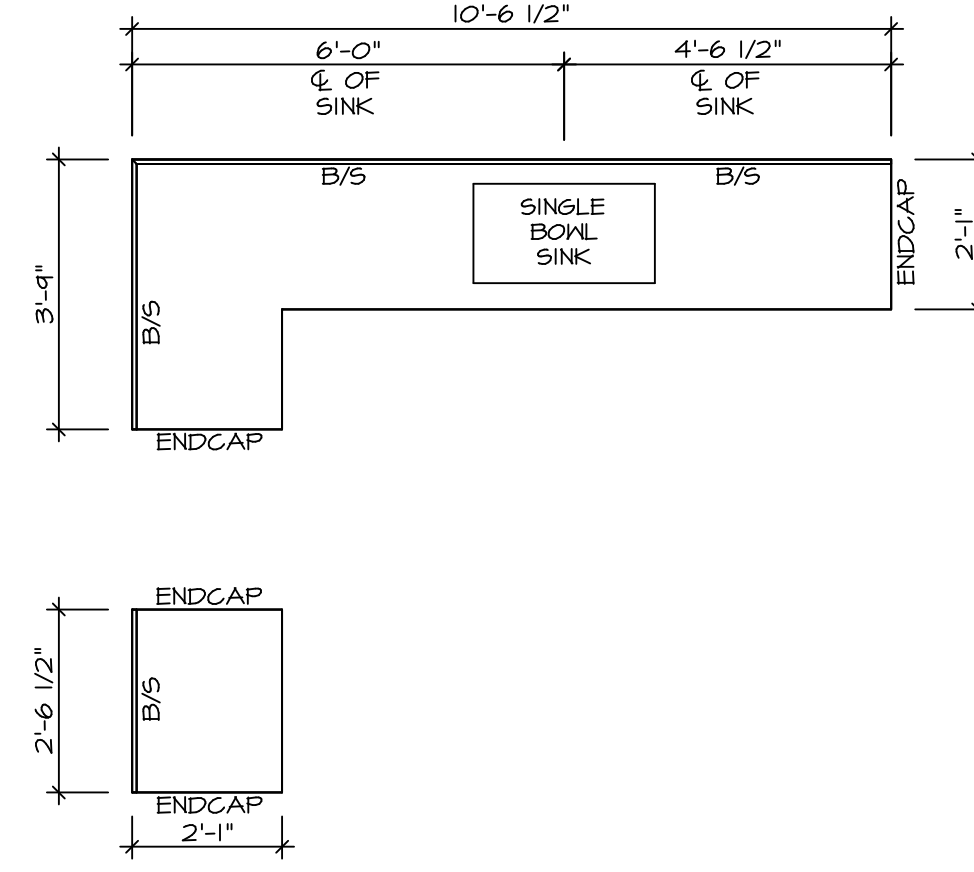
NVR
NVR, Inc. Suite 100
5285 Washburne Rd.
Frederick, MD 21703

C:\NVR\Solves\PLAN_1918_P1918_02\DCI-5A-5487\266500\Sheet\Lot_Specific\19_A-8_PLAN_LS.dwg 06/21/19 - 12:26 pm



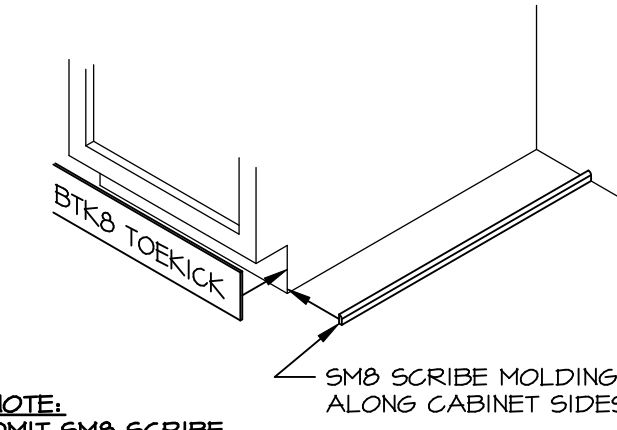
KITCHEN CABINET PLAN (KC-3202)

1
A-12 SCALE: 3/8" = 1'-0"



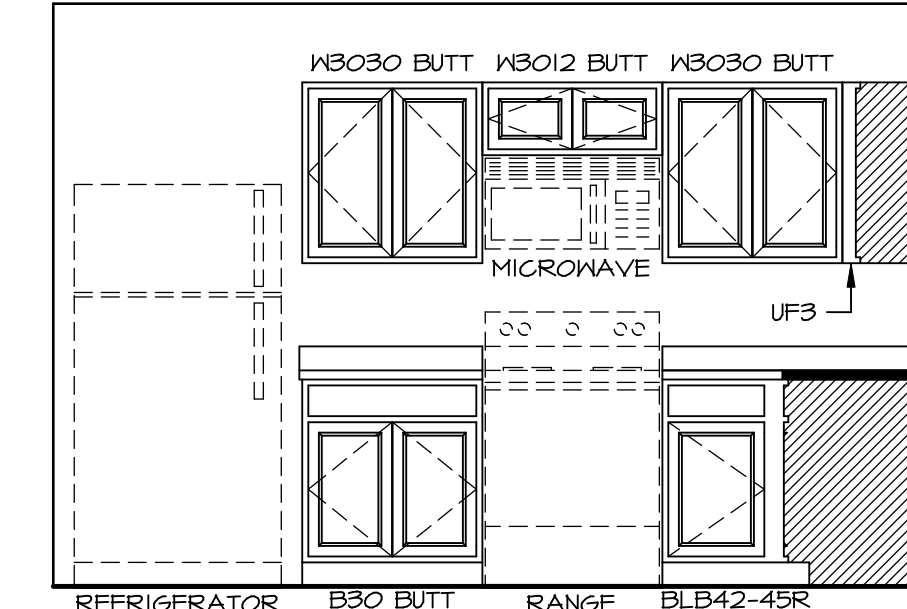
KITCHEN COUNTERTOP PLAN (KT-3202)

2
A-12 SCALE: 3/8" = 1'-0"

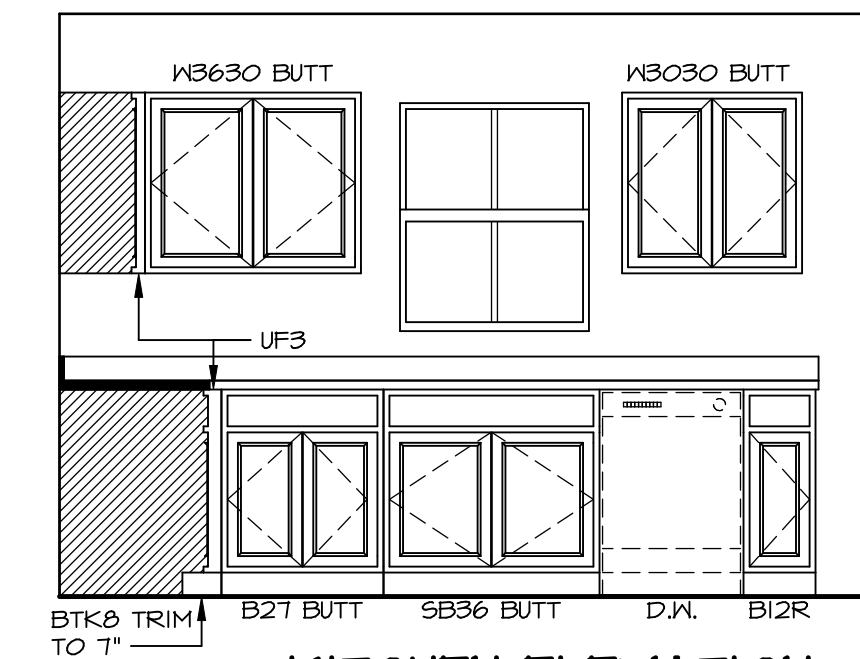


NOTE:
OMIT SMB SCRIBE MOLDING AT DISHWASHER SPACES

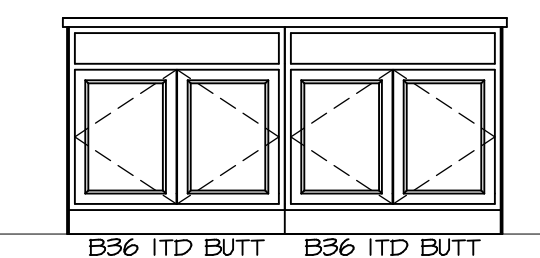
5
A-12 SCALE: 3/4" = 1'-0"



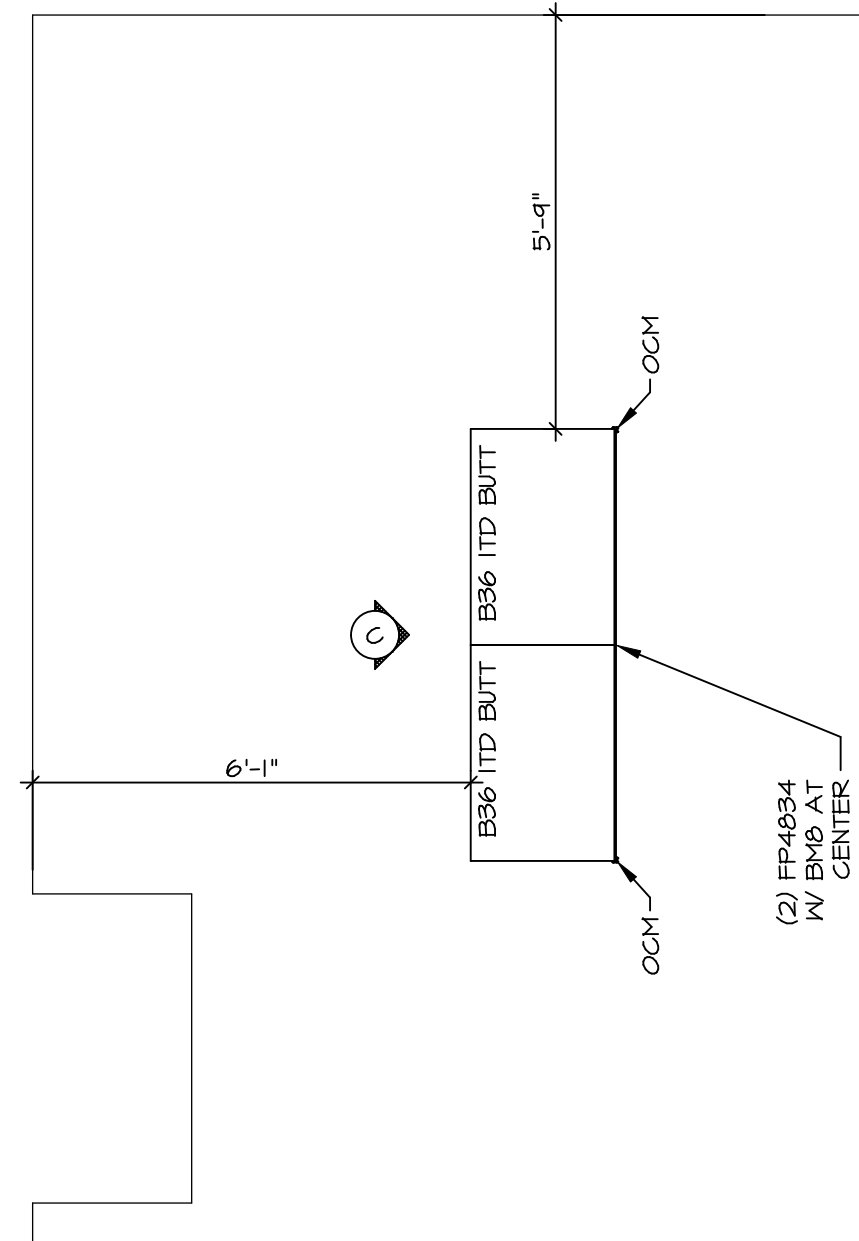
A
SCALE: 3/8" = 1'-0"



B
SCALE: 3/8" = 1'-0"

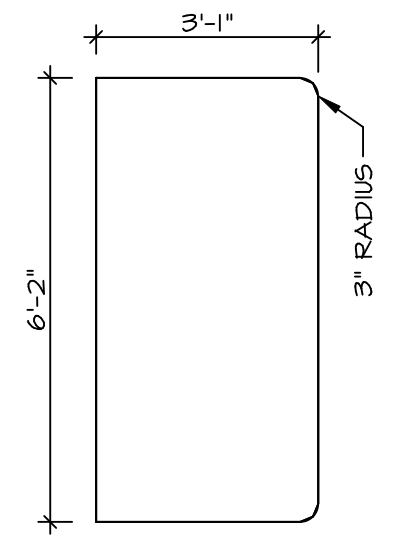


C
SCALE: 3/8" = 1'-0"



KITCHEN CABINET PLAN (KC-3203)

3
A-12 SCALE: 3/8" = 1'-0"

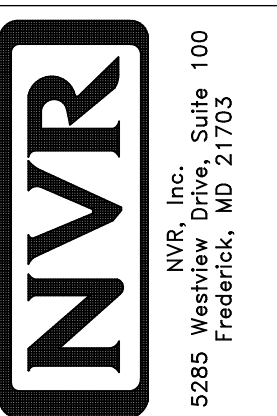


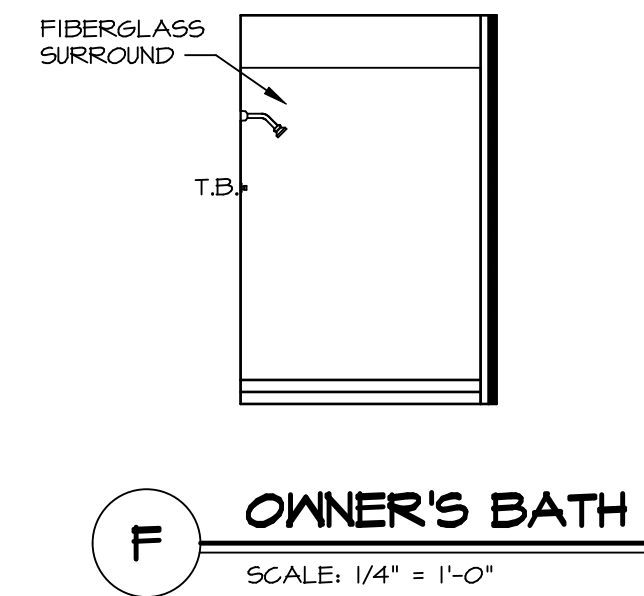
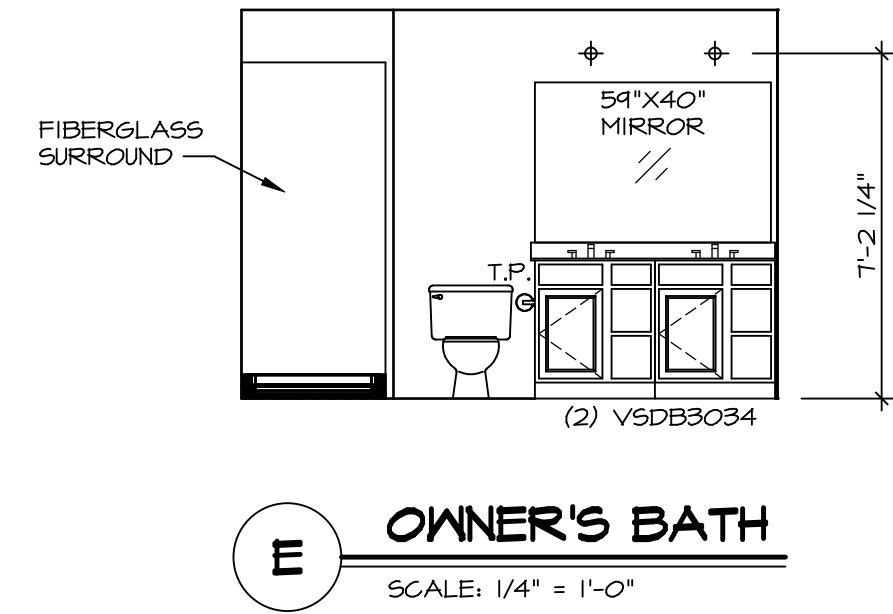
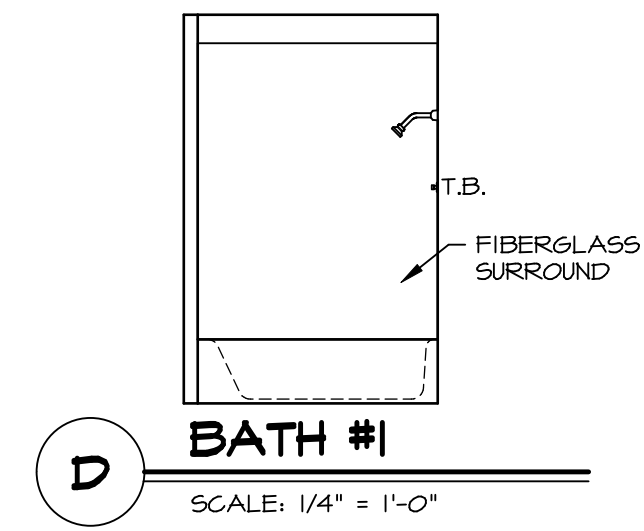
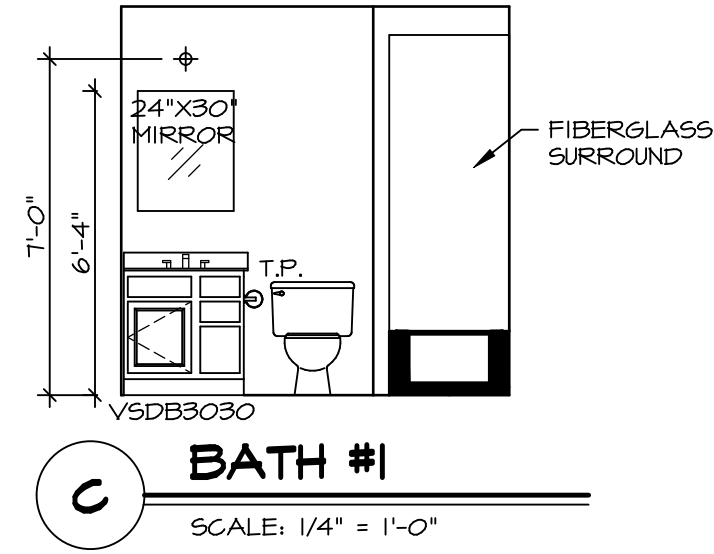
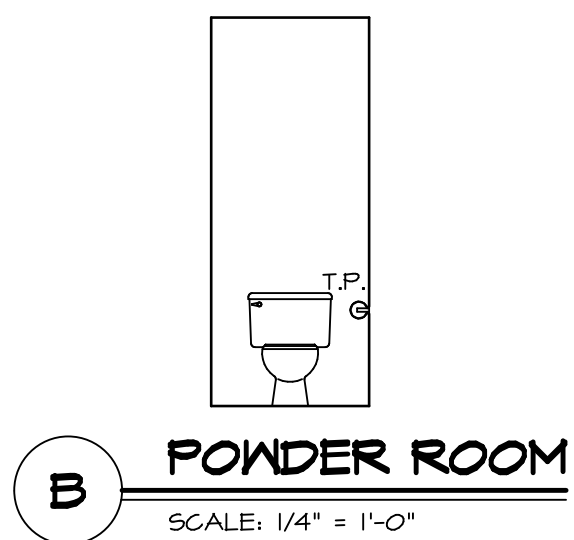
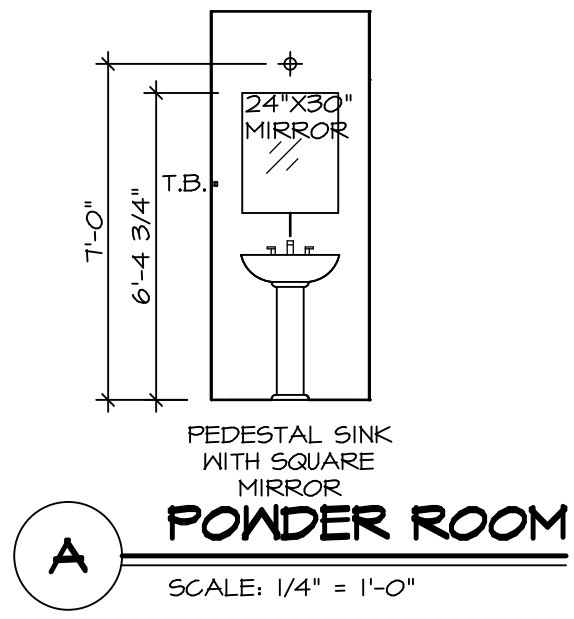
KITCHEN COUNTERTOP PLAN (KT-3203)

4
A-12 SCALE: 3/8" = 1'-0"

SHEET NO. A-12	MODEL PLAN 1918	SET NO. P1918	REMARKS
	DRAWING TITLE KITCHEN PLANS	VERSION 02	
OPTION DESCRIPTION 22		DRAWN BY EBP	
		DATE:	
		OPTION	

©NVR, Inc. expressly reserves the right to modify or change the information contained in these plans. These plans are not to be reproduced, changed or altered in any way without the written consent of NVR, Inc.





NOTES:

- TEMPERED GLASS SHOWER ENCLOSURE WITH SWING DOOR OR OPTIONAL SLIDING DOOR BY DIVISION.
- TUB ACCESS PANELS PROVIDED AS NEEDED, ALL MATERIALS BY DIVISION.
- ALL BATH ELEVATIONS ARE SHOWN PER PLAN.
- ALL VSDB24-42 DRAWERS TO BE SET ON RIGHT HAND.

SHEET NO. A-13	MODEL PLAN 1918	SET NO. P1918	REV. NO. 1	DATE 7/27/16	REMARKS
		VERSION 02	DATE	OPTION	
DRAWING TITLE BATH ELEVATIONS		DRAWN BY CSB			
OPTION DESCRIPTION					
23					

© NVR, Inc. expressly reserves the right to modify or change these plans at any time without notice. These plans are not to be reproduced, changed or altered in any way without the written consent of NVR, Inc.

