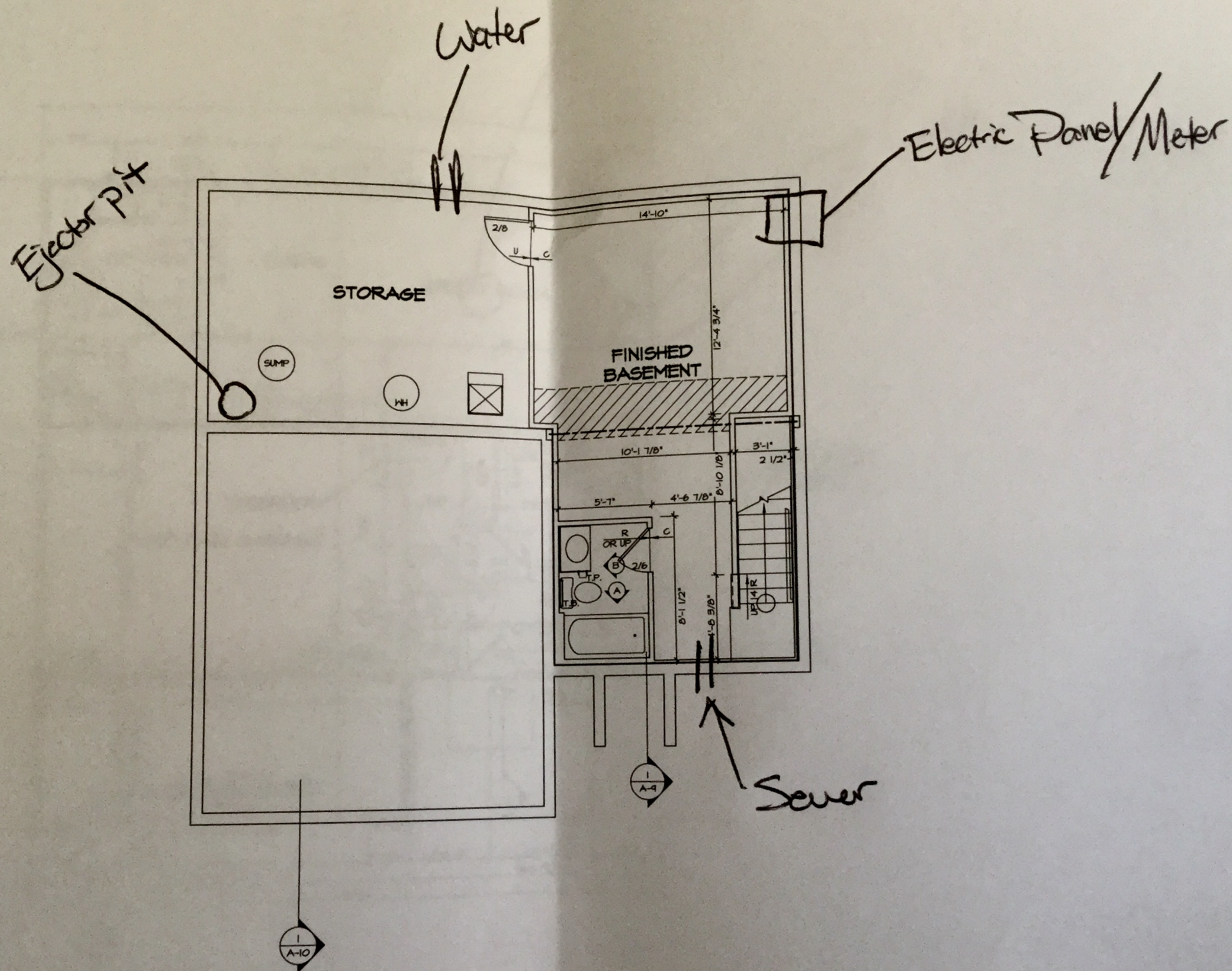
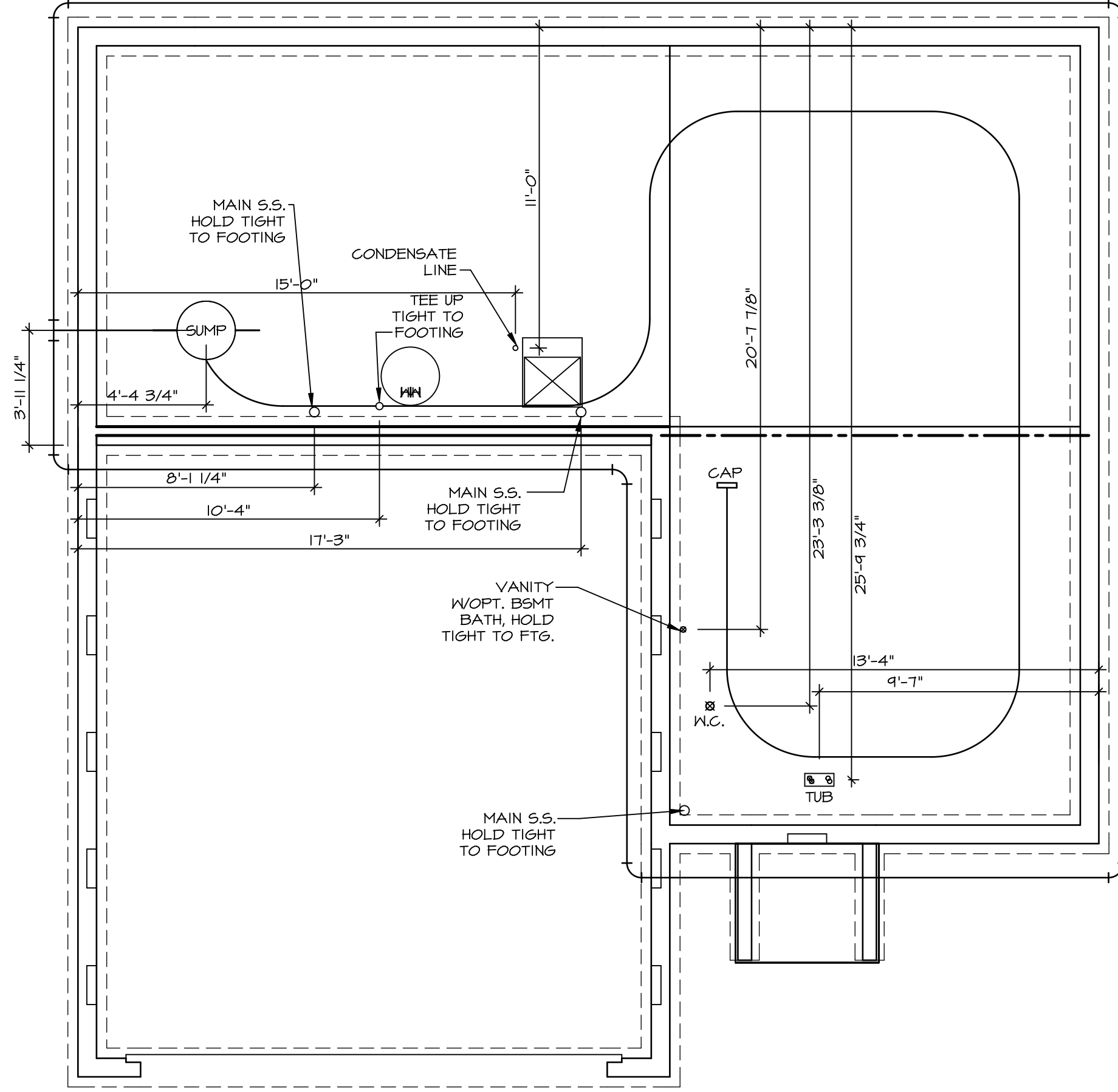


F	PAD FOOT
C	STEEL CO
X	PORTAL
X	JOIST/TR
L	LVL
X	ENGINE
SEE FC DETAILS FRAMING CONNE	



- FLOOR PLAN NOTES**
1. ALL HEADERS ARE (2) 2x6 w/ 2x2x6 WALLS, UNLESS OTHERWISE NOTED.
 2. ALL HEADERS TO HAVE (1) 2x4 UNLESS OTHERWISE NOTED.
 3. ALL EXTERIOR WALLS TO BE 4" WALLS TO BE 3 1/2", UNLESS OTHERWISE NOTED.
 4. HATCHED AREAS INDICATE DROPPED CEILING ARE 12" UNLESS OTHERWISE NOTED.
 5. SEE BRACED WALL PANEL DETAIL FOR WALL FRAMING LOCATIONS AND APPLICABLE.
 6. SEE STANDARD DETAIL GATES FOR INTERIOR TRIM DETAILS.
 7. SEE ARCHITECTURAL DETAIL 51 FOR SPECIFIC INTERIOR TRIM OPTIONS.
 8. ALL WINDOWS HAVE 7'-0 1/2" H UNLESS OTHERWISE NOTED.
- GYPSUM NOTES**
- AT GARAGE:
GYPSUM BOARD AT COMMON WALL WRAPS AND SUPPORTS PER STANDARD FIRE ASSEMBLIES OR AS REQUIRED.
- AT STAIRS:
1/2" GYPSUM BOARD AT UNDERSIDES IN CLOSET

BASEMENT FLOOR PLAN
SCALE: 1/4" = 1'-0"



PLUMBING PLAN
SCALE: 1/4" = 1'-0"

SHEET NO.
A-5

MODEL
SIENNA

DRAWING TITLE
PLUMBING PLAN

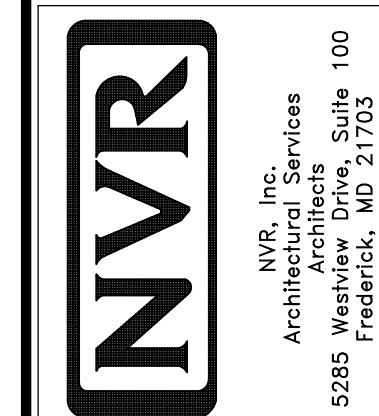
OPTION DESCRIPTION
20

SET NO. SIECO
VERSION **05**

DRAWN BY

DATE: **2/2/2015**

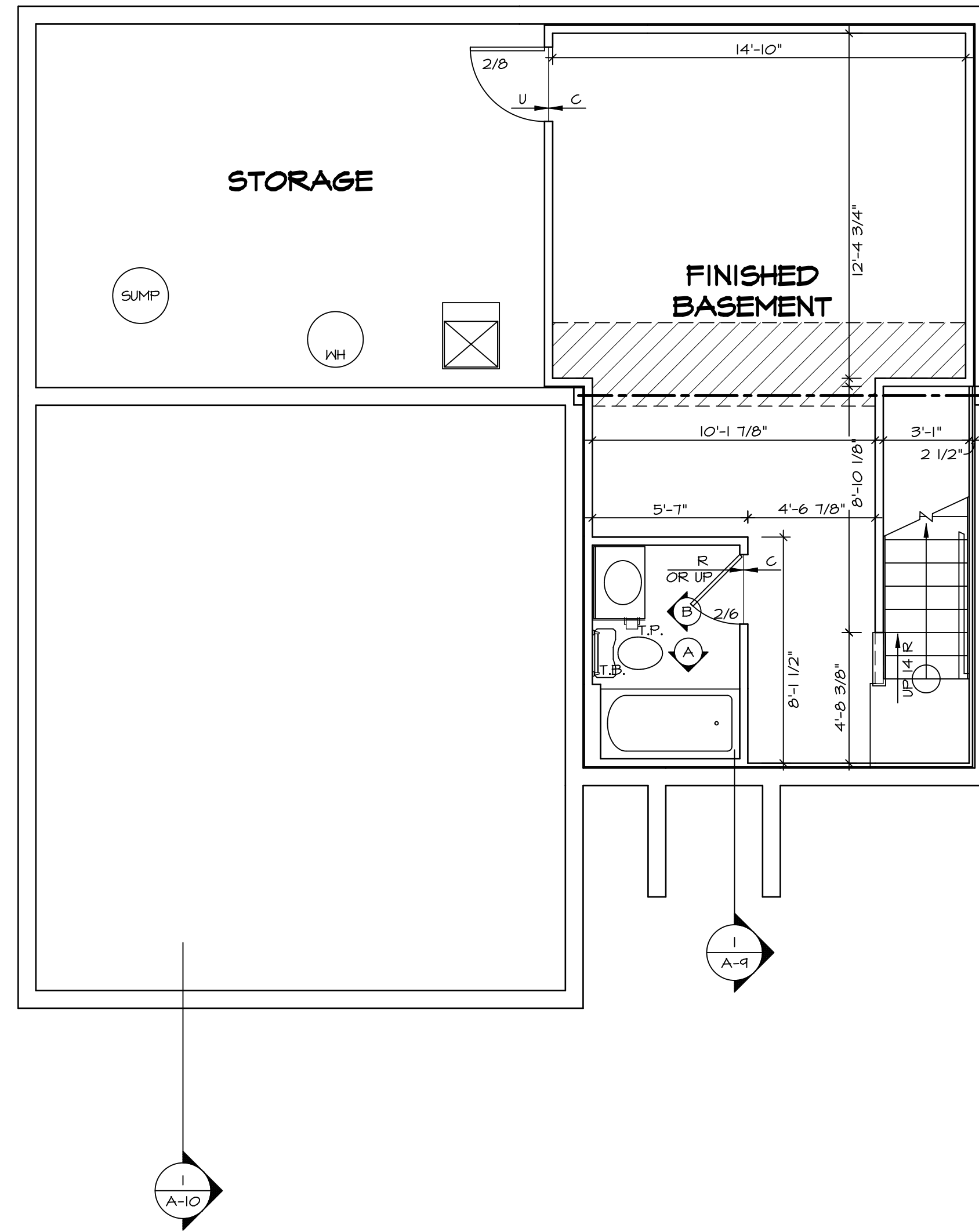
OPTION



NVR, Inc., owner, expressly reserves its copyright in these plans. These plans are not to be reproduced, changed, copied, or used in any way without the prior written consent of NVR, Inc.

REV. NO. DATE

REMARKS



BASEMENT FLOOR PLAN
SCALE: 1/4" = 1'-0"

LEGEND

	BEARING WALL
	NON BEARING WALL
	INDICATES BEARING FROM POINT-LOAD ABOVE
	JACKS
	BEAM/HEADER
	PAD FOOTING
	STEEL COLUMN
	PORTAL FRAME
	JOIST/TRUSS
	LVL
	ENGINEERING PAGE NUMBER

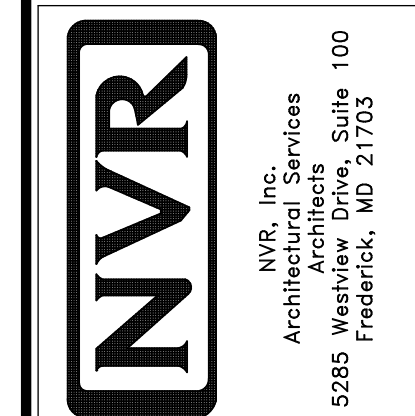
SEE FC DETAILS FOR FRAMING CONNECTORS

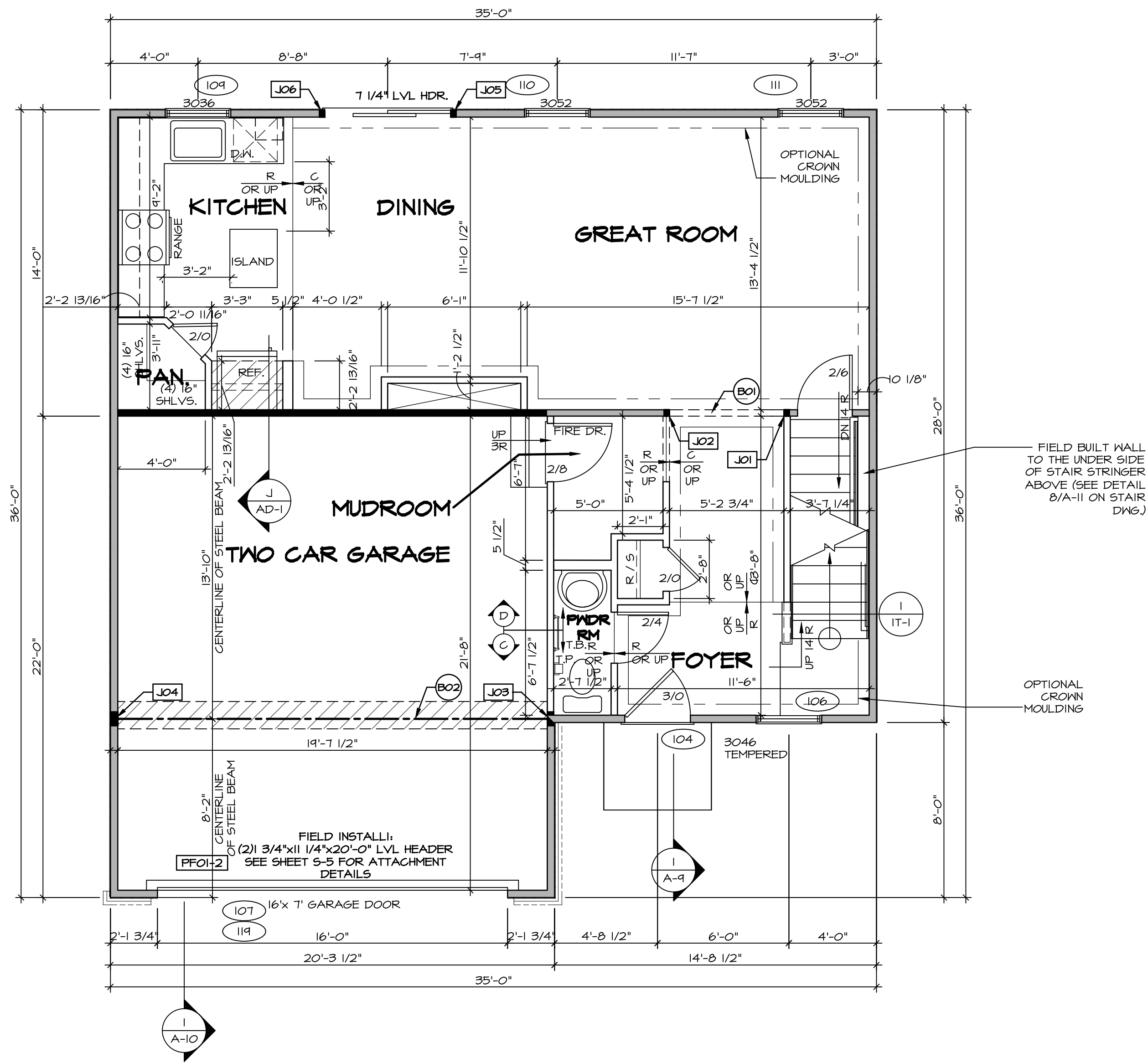
- FLOOR PLAN NOTES**
- ALL HEADERS ARE (2) 2x6 w/ 2x4 WALLS OR (3) 2x6 w/ 2x6 WALLS, UNLESS OTHERWISE NOTED.
 - ALL HEADERS TO HAVE (1) 2x4 OR 2x6 JACK EACH END, UNLESS OTHERWISE NOTED.
 - ALL EXTERIOR WALLS TO BE 4" AND ALL INTERIOR WALLS TO BE 3 1/2", UNLESS OTHERWISE NOTED.
 - HATCHED AREAS INDICATE DROPPED CEILINGS. ALL DROPPED CEILINGS ARE 12" UNLESS OTHERWISE NOTED.
 - SEE "BRACED WALL PANEL DETAIL SHEET" FOR SPECIAL WALL FRAMING LOCATIONS AND HEADER SIZES, IF APPLICABLE.
 - SEE STANDARD DETAIL CATEGORY "IT" SHEET(S) FOR INTERIOR TRIM DETAILS.
 - SEE ARCHITECTURAL DETAIL SHEET "AD" FOR HOUSE SPECIFIC INTERIOR TRIM OPTION TABLE.
 - ALL WINDOWS HAVE T-O 1/2" HEADER HEIGHT UNLESS OTHERWISE NOTED.

- GYPSUM NOTES**
- AT GARAGE:
GYPSUM BOARD AT COMMON WALLS, CEILINGS, BEAM WRAPS AND SUPPORTS PER STANDARD DETAIL FA-1(b) FIRE ASSEMBLIES OR AS REQUIRED BY LOCAL CODE.
- AT STAIRS:
1/2" GYPSUM BOARD AT UNDERSIDE OF STAIRS AND WALLS IN CLOSET

SHEET NO. A-6	MODEL SIENNA	DRAWING TITLE BASEMENT FLOOR PLAN	OPTION DESCRIPTION	SET NO. SIECO VERSION 05	REV. NO. DATE	REMARKS
				DRAWN BY	08/05/16 NL - DRAWING ALIGNMENT	
23				DATE: 2/2/2015		
				OPTION		

NVR, Inc., owner, expressly reserves its copyright in these plans. These plans are not to be reproduced, changed, copied, or otherwise used in any way without the prior written consent of NVR, Inc.





FIRST FLOOR PLAN
SCALE: 1/4" = 1'-0"

LEGEND

- BEARING WALL
- NON BEARING WALL
- INDICATES BEARING FROM POINT-LOAD ABOVE
- JACKS
- BEAM/HEADER
- PAD FOOTING
- STEEL COLUMN
- PORTAL FRAME
- JOIST/TRUSS
- LVL
- ENGINEERING PAGE NUMBER

SEE FC DETAILS FOR FRAMING CONNECTORS

- FLOOR PLAN NOTES**
- ALL HEADERS ARE (2) 2x6 w/ 2x4 WALLS OR (3) 2x6 w/ 2x6 WALLS, UNLESS OTHERWISE NOTED.
 - ALL HEADERS TO HAVE (1) 2x4 OR 2x6 JACK AND KING STUD EACH END, UNLESS OTHERWISE NOTED.
 - ALL EXTERIOR WALLS TO BE 4" w/ OSB OR 3 1/2" w/ T-PLY. ALL INTERIOR WALLS TO BE 3 1/2", UNLESS OTHERWISE NOTED.
 - HATCHED AREAS INDICATE DROPPED CEILINGS. ALL DROPPED CEILINGS ARE 12' UNLESS OTHERWISE NOTED.
 - SEE 'BRACED WALL PANEL DETAIL SHEET' FOR SPECIAL WALL FRAMING LOCATIONS AND HEADER SIZES, IF APPLICABLE.
 - SEE STANDARD DETAIL CATEGORY 'IT' SHEET(S) FOR INTERIOR TRIM DETAILS.
 - SEE ARCHITECTURAL DETAIL SHEET 'AD' FOR HOUSE SPECIFIC INTERIOR TRIM OPTION TABLE.
 - ALL WINDOWS HAVE 1"-0 1/2" HEADER HEIGHT UNLESS OTHERWISE NOTED.
 - ALL HEADERS IN NON-BEARING WALLS SHALL BE A SINGLE FLAT 2x4 OR 2x6 ATTACHED TO CRIPPLES ABOVE, UNLESS OTHERWISE NOTED.

- GYPSUM NOTES**
- AT GARAGE:**
GYPSUM BOARD AT COMMON WALLS, CEILINGS, BEAM WRAPS AND SUPPORTS PER STANDARD DETAIL FA-(b) FIRE ASSEMBLIES OR AS REQUIRED BY LOCAL CODE.
- AT STAIRS:**
1/2" GYPSUM BOARD AT UNDERSIDE OF STAIRS AND WALLS IN CLOSET

FIRST FLOOR JACK SCHEDULE

IDENTIFIER	DESCRIPTION	OPTIONS	ENS. NUM.	FIELD INSTALLED
J01	JACK - (2) 2X4 SFF STUD GRADE		103	
J02	JACK - (2) 2X4 SFF STUD GRADE		103	
J03	JACK - (5) 2X4 SFF#1	GCB / GCC	105	
J04	JACK - (5) 2X4 SFF#1	GCB / GCC	105	
J05	JACK - (2) 2X4 SFF STUD GRADE	DGT	104	
J06	JACK - (2) 2X4 SFF STUD GRADE	DGT	104	

- LVL PLY TO PLY FASTENING SCHEDULE:**
- (2) PLY UP TO AND INCLUDING 11 7/8" TALL; FASTEN PLYS W/ (2) ROWS 16D NAILS AT 12" O.C.
 - (2) PLY 14" TO AND 18" TALL (INCLUSIVE); FASTEN PLYS W/ (3) ROWS 16D NAILS AT 12" O.C.
 - (2) PLY 20" TALL AND OVER; FASTEN PLYS W/ (4) ROWS 16D NAILS AT 12" O.C.
 - (3) PLY UP TO AND INCLUDING 11 7/8" TALL; FASTEN PLYS W/ (2) ROWS 16D NAILS AT 12" O.C. FROM EACH SIDE
 - (3) PLY 14" TO AND 18" TALL (INCLUSIVE); FASTEN PLYS W/ (3) ROWS 16D NAILS AT 12" O.C. FROM EACH SIDE
 - (3) PLY 20" TALL AND OVER; FASTEN PLYS W/ (4) ROWS 16D NAILS AT 12" O.C. FROM EACH SIDE

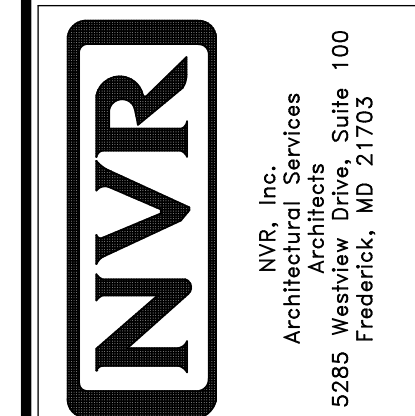
FIELD INSTALLED FIRST FLOOR BEAM/HEADER SCHEDULE

IDENTIFIER	DESCRIPTION	LENGTH	OPTIONS	ENS. NUM.	REMARKS
B01	INT HEADER - 2X8 - 2 PLY	5'-8 3/4"		103	
B02	BEAM STEEL - W12X26	20'-2"	SRI / SXS / FBA / FCA	105	
FF01-2	LVL - 11-04	20'-0"	GCB	119	PORTAL FRAME, 2 PLY, 1A

REMARKS

REV. NO.	DATE	DESCRIPTION
1	08/05/16	N.L. - DRAWING ALIGNMENT
2	7/7/17	DRH - T-PLY CONVERSION

NVR, Inc., owner, expressly warrants the common rights in these plans. These plans are not to be reproduced, changed, copied in any way, or used for any other purpose without the written consent of NVR, Inc.



SET NO. SIECO
VERSION 05
DRAWN BY
DATE: 2/2/2015
OPTION

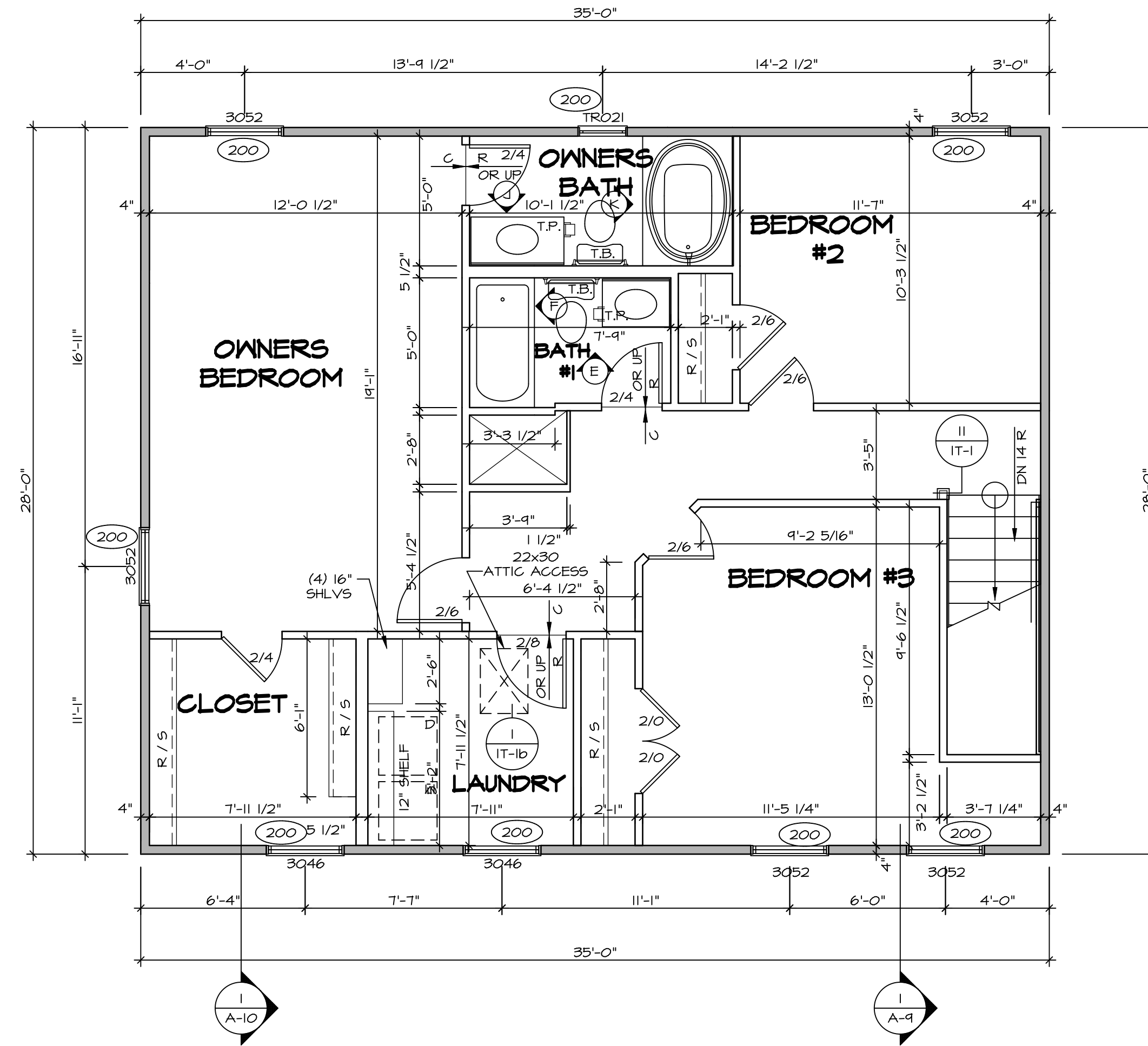
MODEL: SIENNA
DRAWING TITLE: FIRST FLOOR PLAN
OPTION DESCRIPTION

SHEET NO. A-7
OPTION DESCRIPTION: 24

LEGEND	
	BEARING WALL
	NON BEARING WALL
	INDICATES BEARING FROM POINT-LOAD ABOVE
	JACKS
	BEAM/HEADER
	PAD FOOTING
	STEEL COLUMN
	PORTAL FRAME
	JOIST/TRUSS
	LVL
	ENGINEERING PAGE NUMBER
SEE FC DETAILS FOR FRAMING CONNECTORS	

FLOOR PLAN NOTES

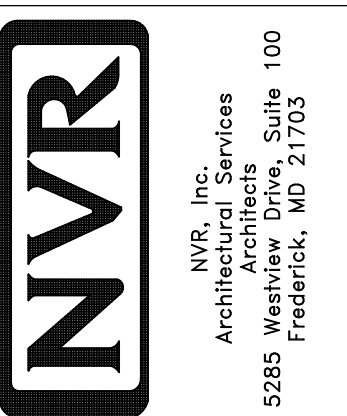
- ALL HEADERS ARE (2) 2x6 w/ 2x4 WALLS OR (3) 2x6 w/ 2x6 WALLS, UNLESS OTHERWISE NOTED.
- ALL HEADERS TO HAVE (1) 2x4 OR 2x6 JACK AND KING STUD EACH END, UNLESS OTHERWISE NOTED.
- ALL EXTERIOR WALLS TO BE 4" w/ OSB OR 3 1/2" w/ T-PLY, ALL INTERIOR WALLS TO BE 3 1/2", UNLESS OTHERWISE NOTED.
- HATCHED AREAS INDICATE DROPPED CEILING. ALL DROPPED CEILING ARE 12" UNLESS OTHERWISE NOTED.
- SEE "BRACED WALL PANEL DETAIL SHEET" FOR SPECIAL WALL FRAMING LOCATIONS AND HEADER SIZES, IF APPLICABLE.
- SEE STANDARD DETAIL CATEGORY "IT" SHEET(S) FOR INTERIOR TRIM DETAILS.
- SEE ARCHITECTURAL DETAIL SHEET "AD" FOR HOUSE SPECIFIC INTERIOR TRIM OPTION TABLE.
- ALL WINDOWS HAVE 7'-0 1/2" HEADER HEIGHT UNLESS OTHERWISE NOTED.
- ALL HEADERS IN NON-BEARING WALLS SHALL BE A SINGLE FLAT 2X4 OR 2X6 ATTACHED TO CRIPPLES ABOVE, UNLESS OTHERWISE NOTED.



SECOND FLOOR PLAN
SCALE: 1/4" = 1'-0"

REV. NO.	DATE	REMARKS
1	08/05/16	NL - DRAWING ALIGNMENT
2	7/7/17	DRH - T-PLY CONVERSION

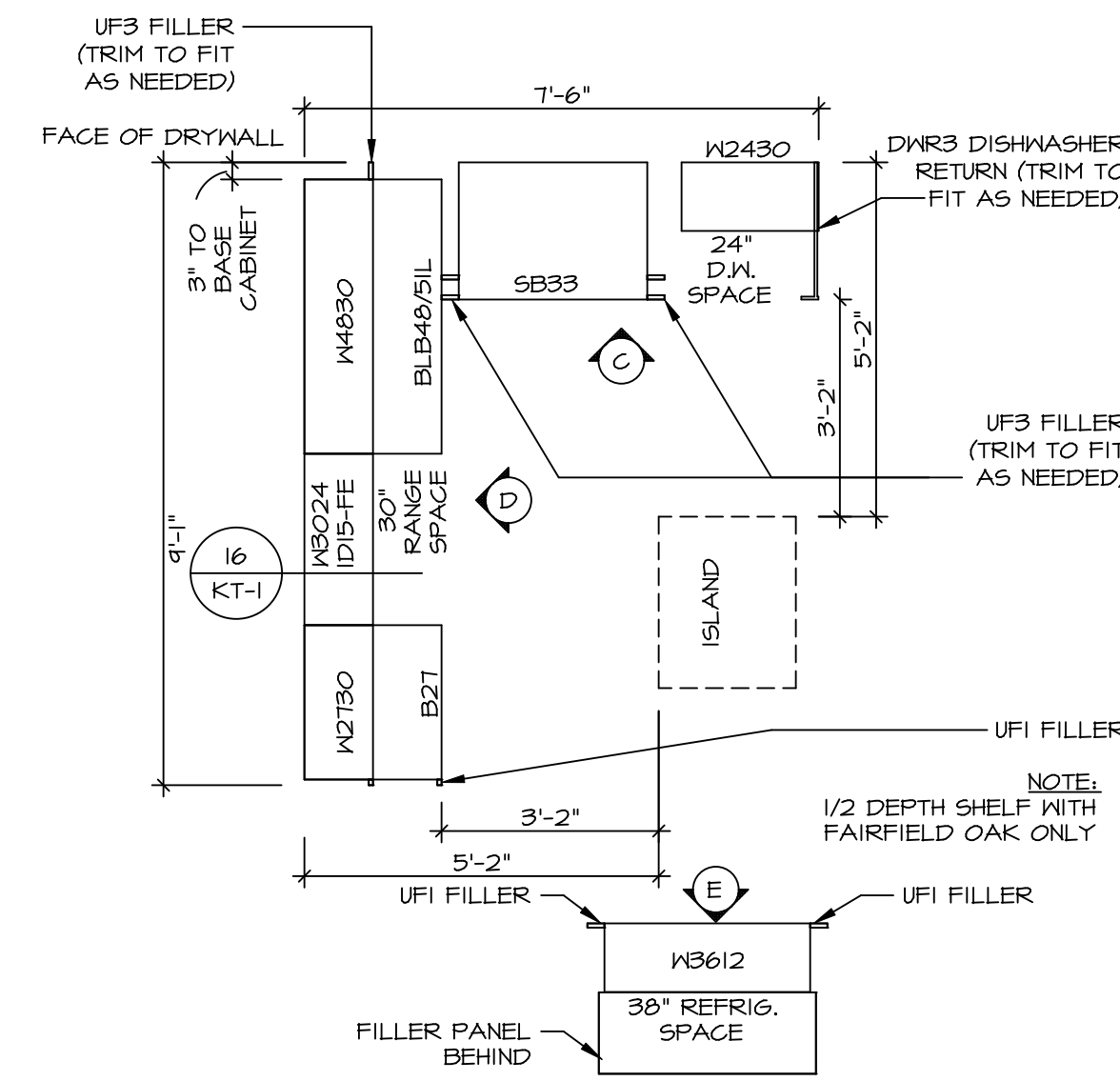
NVR, Inc., owner, expressly reserves its copyright in these plans. These plans are not to be reproduced, changed, copied, or otherwise used in any way without the written consent of NVR, Inc.



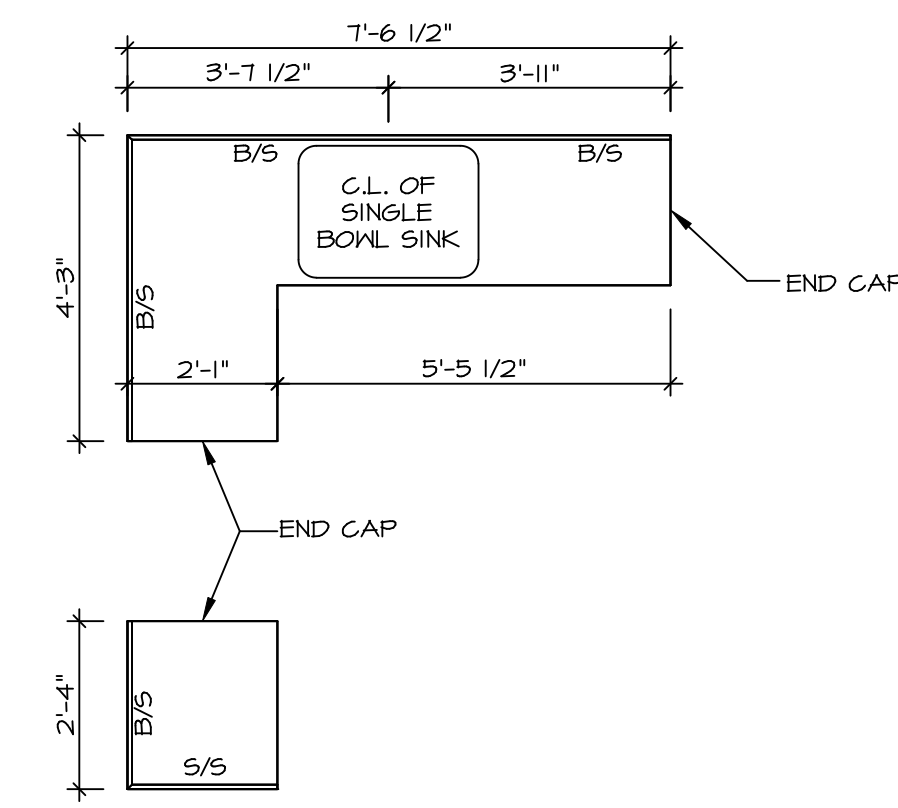
SET NO. SIECO	VERSION 05
DRAWN BY	DATE: 2/2/2015
OPTION	

MODEL	SIENNA
DRAWING TITLE	SECOND FLOOR PLAN
OPTION DESCRIPTION	

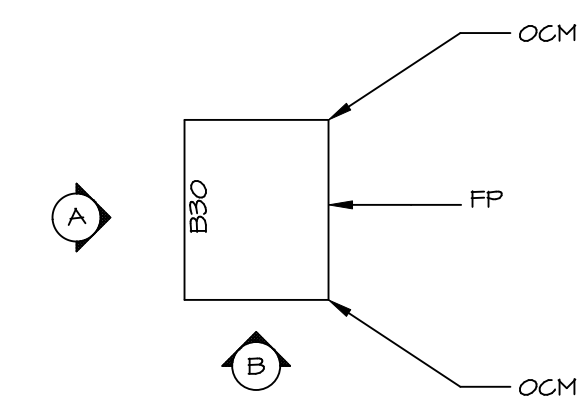
SHEET NO.	A-8
26	



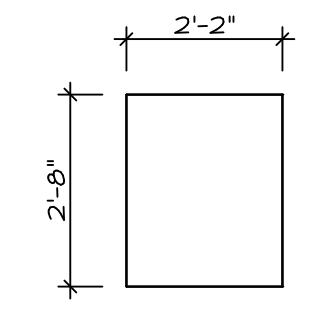
CABINET PLAN - KC-1924 1
 STANDARD KITCHEN w/ 30" WALL CABINETS SCALE: 3/8" = 1'-0" A-12



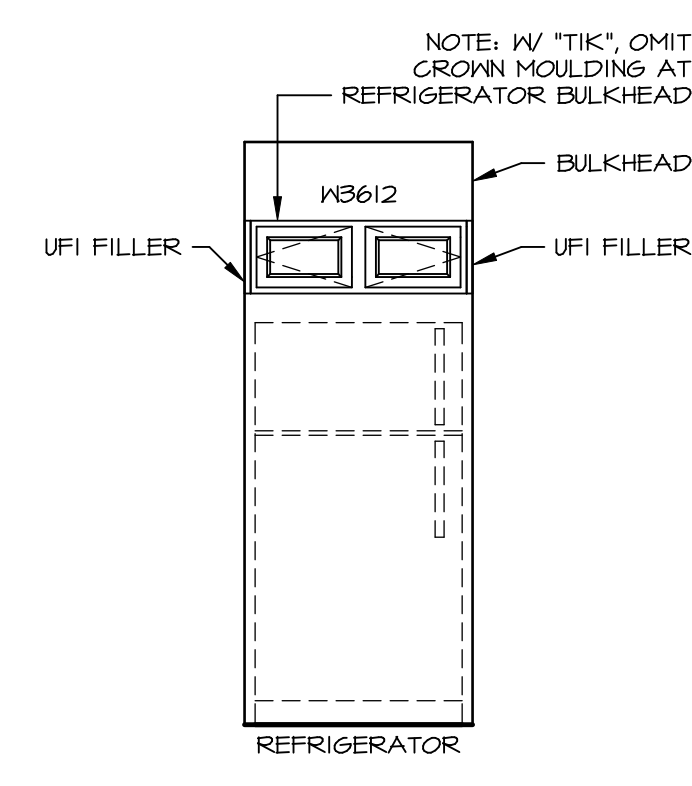
COUNTERTOP PLAN - KT-1924 3
 STANDARD KITCHEN w/ 30" WALL CABINETS SCALE: 3/8" = 1'-0" A-12



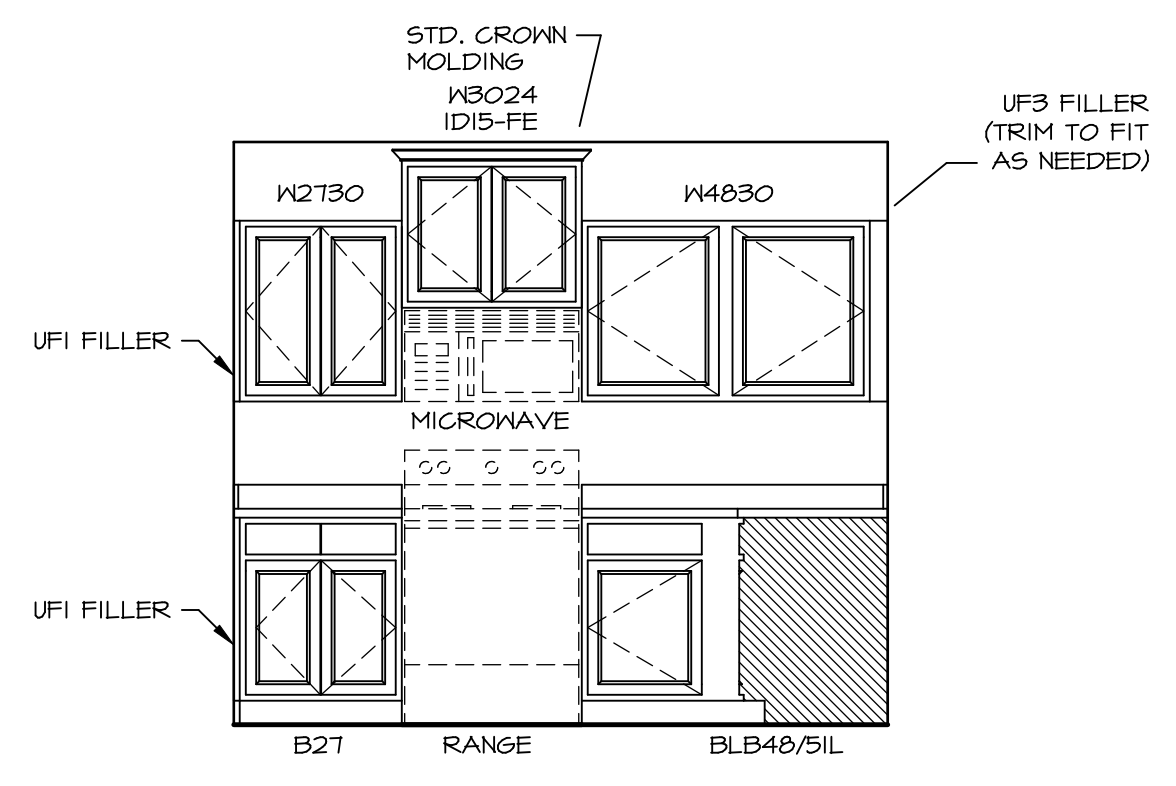
KITCHEN CABINET PLAN - KC-1584 2
 SCALE: 3/8" = 1'-0" A-12



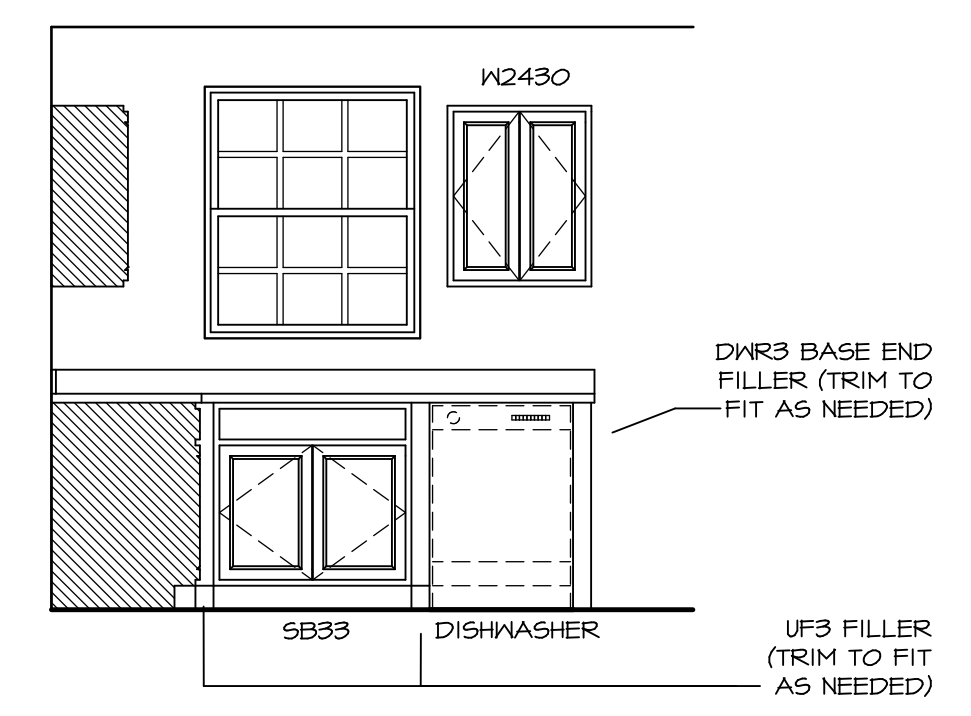
KITCHEN COUNTERTOP PLAN - KT-1584 4
 SCALE: 3/8" = 1'-0" A-12



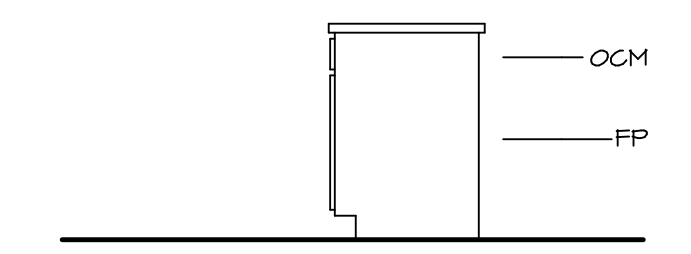
KITCHEN ELEVATION E
 SCALE: 3/8" = 1'-0"



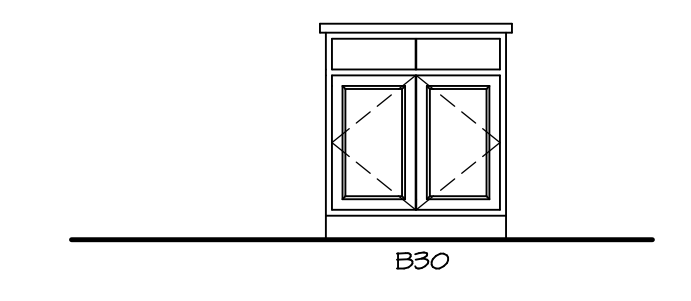
KITCHEN ELEVATION D
 SCALE: 3/8" = 1'-0"



KITCHEN ELEVATION C
 SCALE: 3/8" = 1'-0"



KITCHEN ELEVATION B
 SCALE: 3/8" = 1'-0"



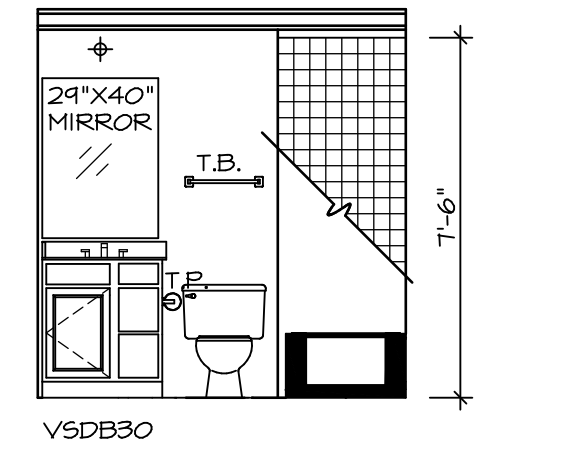
KITCHEN ELEVATION A
 SCALE: 3/8" = 1'-0"

SHEET NO.	MODEL	SET NO.	VERSION	DRAWN BY	DATE	OPTION	REMARKS
A-12	SIENNA KITCHENS	05	05		2/2/2015		
32							

SIENNA KITCHENS
 ARCHITECTURAL SERVICES
 5285 Westpark Drive, Suite 100
 Frederick, MD 21703

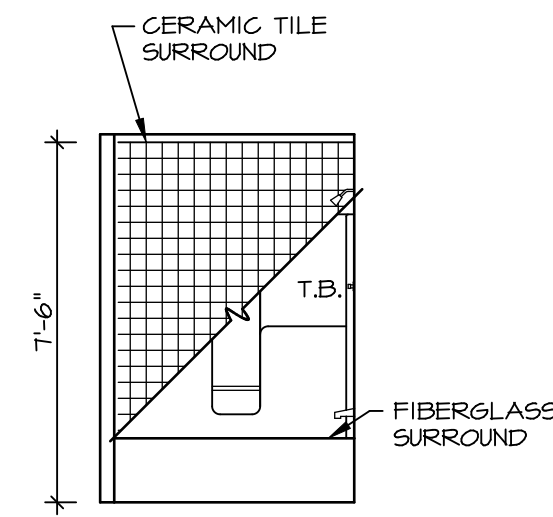
NVR, Inc. owner, expressly reserves the copyright in these plans. These plans are not to be reproduced, changed, copied, or otherwise used without the written consent of NVR, Inc.

C:\NVR\Sienna_SIECO_05\DC7-TE-0938\1078465\Sheet32_A-12_KIT_LS.dwg 01/14/19 - 11:23 am



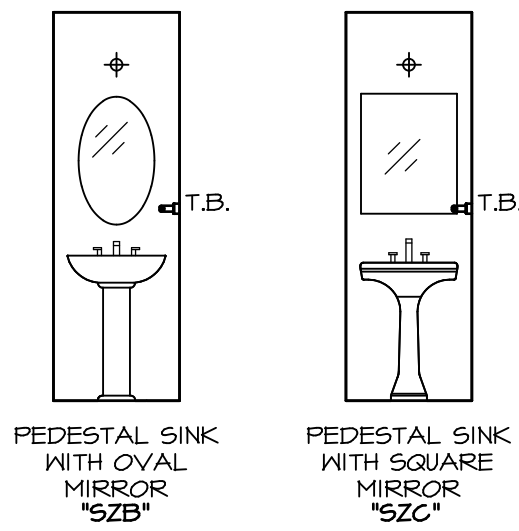
B BASEMENT POWDR. RM. W/ TUB
SCALE: 1/4" = 1'-0"

B



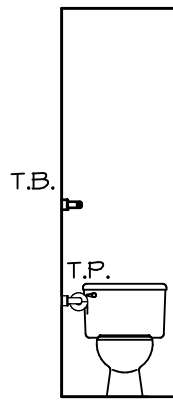
A BASEMENT POWDR. RM. W/ TUB
SCALE: 1/4" = 1'-0"

A



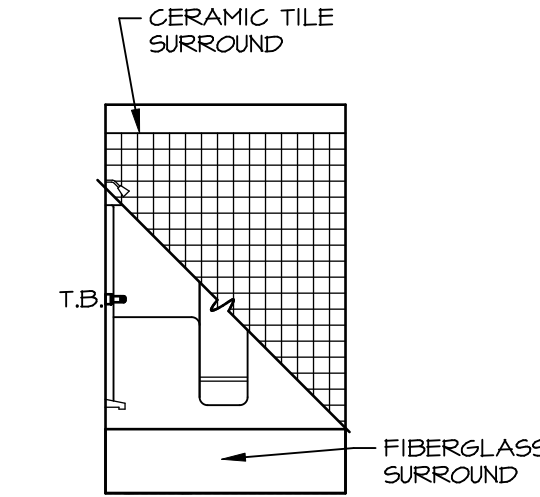
D POWDER ROOM
SCALE: 1/4" = 1'-0"

D



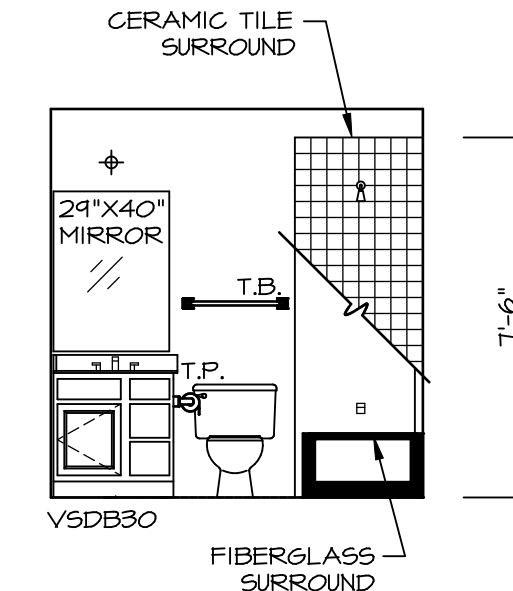
C POWDER ROOM
SCALE: 1/4" = 1'-0"

C



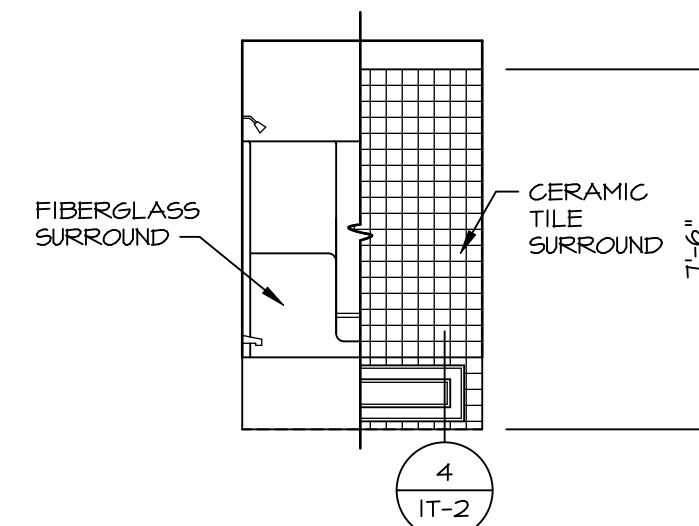
F BATH #1
SCALE: 1/4" = 1'-0"

F



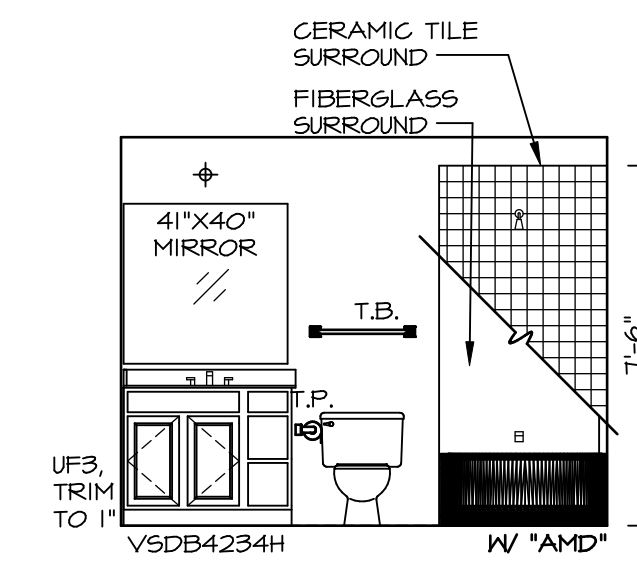
E BATH #1
SCALE: 1/4" = 1'-0"

E



K OWNER'S BATH (AMD)
SCALE: 1/4" = 1'-0"

K



J OWNER'S BATH (AMD)
SCALE: 1/4" = 1'-0"

J

NOTES:

1. TEMPERED GLASS SHOWER ENCLOSURE WITH SWING DOOR OR OPTIONAL SLIDING DOOR BY DIVISION
2. TUB ACCESS PANELS PROVIDED AS NEEDED, ALL MATERIALS BY DIVISION
3. REFER TO SHEET D-II FOR TUB AND SHOWER DETAILS.
4. ALL V5DB24-42 DRAWERS TO BE SET ON RIGHT HAND.
5. BATH ELEVATIONS ARE SHOWN PER PLAN.

REV. NO.	DATE	REMARKS
1	08/05/16	N.L. - DRAWING ALIGNMENT

NVR, Inc., owner, expressly reserves its copyright in these plans. These plans are not to be reproduced, changed, copied, or otherwise used in any way without the prior written consent of NVR, Inc.

NVR
Architectural Services
5285 West Lakeshore, Suite 100
Frederick, MD 21703

SET NO. SIECO	VERSION 05
DRAWN BY CSE	DATE: 4/2/15
OPTION	

SHEET NO. A-13	MODEL SIENNA
	DRAWING TITLE BATH ELEVATIONS
	OPTION DESCRIPTION
33	