

|  |                         |
|--|-------------------------|
|  | PAD FOOTING             |
|  | STEEL COLUMN            |
|  | PORTAL FRAME            |
|  | JOIST/TRUSS             |
|  | LVL                     |
|  | ENGINEERING PAGE NUMBER |

SEE FC DETAILS FOR FRAMING CONNECTORS

- FLOOR PLAN NOTES**
1. ALL HEADERS ARE (2) 2x6 w/ 2x4 WALLS OR (3) 2x6 w/ 2x6 WALLS, UNLESS OTHERWISE NOTED.
  2. ALL HEADERS TO HAVE (1) 2x4 OR 2x6 JACK EACH END, UNLESS OTHERWISE NOTED.
  3. ALL EXTERIOR WALLS TO BE 4" AND ALL INTERIOR WALLS TO BE 3 1/2", UNLESS OTHERWISE NOTED.
  4. HATCHED AREAS INDICATE DROPPED CEILINGS. ALL DROPPED CEILINGS ARE 12" UNLESS OTHERWISE NOTED.
  5. SEE "BRACED WALL PANEL DETAIL SHEET" FOR SPECIAL WALL FRAMING LOCATIONS AND HEADER SIZES, IF APPLICABLE.
  6. SEE STANDARD DETAIL CATEGORY "11" SHEETS FOR INTERIOR TRIM DETAILS.
  7. SEE ARCHITECTURAL DETAIL SHEET "AD" FOR HOUSE SPECIFIC INTERIOR TRIM OPTION TABLE.
  8. ALL WINDOWS HAVE 7'-0" 1/2" HEADER HEIGHT UNLESS OTHERWISE NOTED.

- GYPSUM NOTES**
- AT GARAGE:**  
GYPSUM BOARD AT COMMON WALLS, CEILING, BEAM WRAPS AND SUPPORTS PER STANDARD DETAIL FA-163. FIRE ASSEMBLIES OR AS REQUIRED BY LOCAL CODE.
- AT STAIRS:**  
1/2" GYPSUM BOARD AT UNDERSIDE OF STAIRS AND HALLS IN CLOSET
- BASEMENT WITH I-JOIST FLOOR SYSTEM ABOVE:**  
WITH OPTION "SCI" - DRYWALL UNFINISHED BASEMENT CEILING AREA
- NOTES:**
- 1/2" GYPSUM WALL BOARD REQUIRED ON CEILING IN UNFINISHED AREAS WHEN NO SPRINKLER SYSTEM IS INSTALLED.
  - A MAXIMUM AREA OF 80 SQ FT MAY BE OMITTED AS NEEDED FOR INSTALLATION OF PLUMBING, ELECTRICAL, AND/OR HVAC (TYPICALLY AN 8'-0"x8'-0" CEILING SPACE ABOVE MECHANICAL AREA).
  - PROVIDE FIRE BLOCKING AS REQUIRED AT PERIMETER OF ANY AREAS WHERE DRYWALL HAS BEEN OMITTED.

| REV. NO. | DATE | DESCRIPTION |
|----------|------|-------------|
|          |      |             |

NVR, Inc. is a registered professional engineering firm. It is not to be used for any other purpose without the written consent of NVR, Inc.

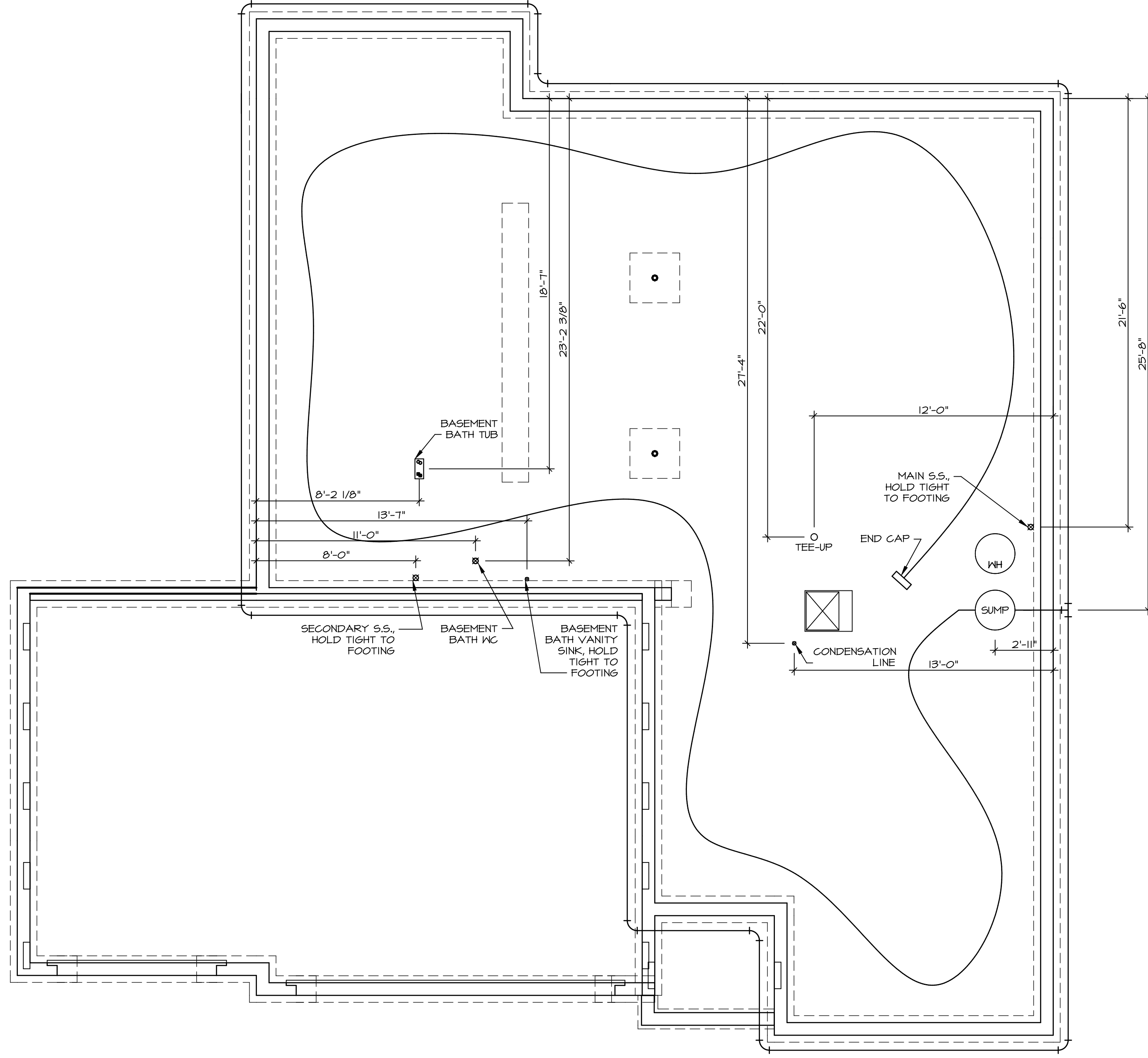


|               |
|---------------|
| SET NO. P1000 |
| VERSION 02    |
| DRAWN BY      |
| DATE          |
| OPTION        |

PROJECT: PISA TORRE  
DRAWING TITLE: BASEMENT FLOOR PLAN  
SHEET NO.: A-6

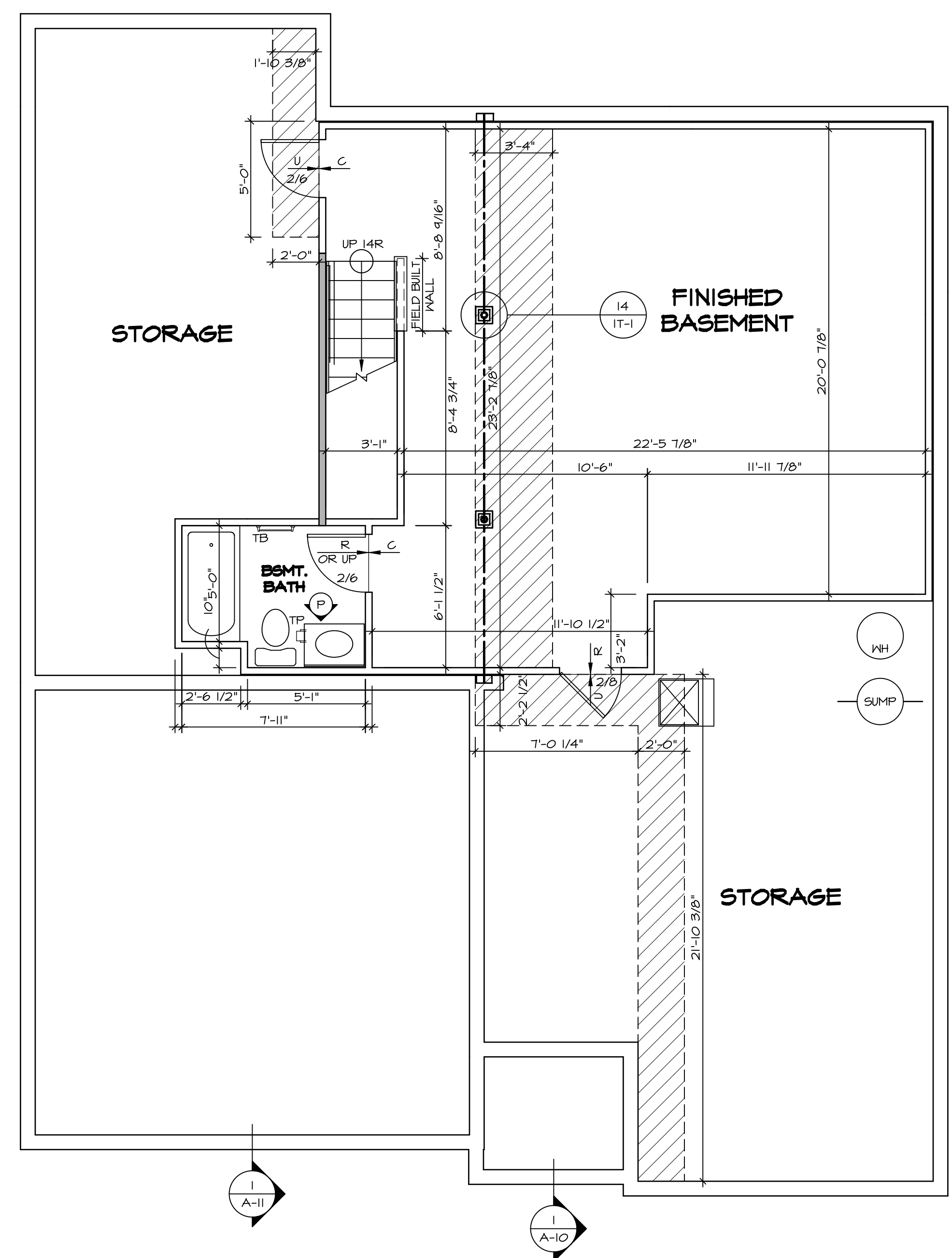
**BASEMENT FLOOR PLAN**  
SCALE: 1/4" = 1'-0"

~~\_\_\_\_\_~~ JF JB



PLUMBING PLAN  
SCALE: 1/4" = 1'-0"

|  |                                       |                         |  |
|--|---------------------------------------|-------------------------|--|
| SHEET NO.<br><b>A-5</b>  | MODEL<br><b>PISA TORRE</b>            | SET NO.<br><b>PSTCO</b> | REMARKS  |
|  | DRAWING TITLE<br><b>PLUMBING PLAN</b> | VERSION<br><b>02</b>    |  |
| OPTION DESCRIPTION<br><b>31</b>  | DRAWN BY                              | DATE                    | REV. NO.   DATE  |
|  | OPTION                                | DATE                    |  |
| <p>NVR, Inc. Architectural Services<br/>Architects P.L.L.C.<br/>21 Park Plaza, Suite A<br/>Frederick, MD 21702</p> |                                       |                         | <p>NVR, Inc., owner, expressly reserves its copyright in these plans. These plans are not to be reproduced, changed, copied, or otherwise used in any way without the written consent of NVR, Inc.</p> |
| <p>C:\NVA\Solves\PISA_TORRE_02\DCY-TE-0039\1057669\SheetA\Lot_Specific\31_A-5_PLUMB_IS.dwg 12/19/18 - 6:30 am</p>  |                                       |                         |  |



**BASEMENT FLOOR PLAN**  
SCALE: 1/4" = 1'-0"

**LEGEND**

|  |   |
|--|---|
|  | BEARING WALL                                  |
|  | NON BEARING WALL                              |
|  | INDICATES BEARING FROM POINT-LOAD ABOVE JACKS |
|  | BEAM/HEADER                                   |
|  | PAD FOOTING                                   |
|  | STEEL COLUMN                                  |
|  | PORTAL FRAME                                  |
|  | JOIST/TRUSS                                   |
|  | LVL   |
|  | ENGINEERING PAGE NUMBER                       |

SEE FC DETAILS FOR FRAMING CONNECTORS

- FLOOR PLAN NOTES**
- ALL HEADERS ARE (2) 2x6 W/ 2x4 WALLS OR (3) 2x6 W/ 2x6 WALLS, UNLESS OTHERWISE NOTED.
  - ALL HEADERS TO HAVE (1) 2x4 OR 2x6 JACK EACH END, UNLESS OTHERWISE NOTED.
  - ALL EXTERIOR WALLS TO BE 4" AND ALL INTERIOR WALLS TO BE 3 1/2", UNLESS OTHERWISE NOTED.
  - HATCHED AREAS INDICATE DROPPED CEILING. ALL DROPPED CEILING ARE 12" UNLESS OTHERWISE NOTED.
  - SEE "BRACED WALL PANEL DETAIL SHEET" FOR SPECIAL WALL FRAMING LOCATIONS AND HEADER SIZES, IF APPLICABLE.
  - SEE STANDARD DETAIL CATEGORY "IT" SHEET(S) FOR INTERIOR TRIM DETAILS.
  - SEE ARCHITECTURAL DETAIL SHEET "AD" FOR HOUSE SPECIFIC INTERIOR TRIM OPTION TABLE.
  - ALL WINDOWS HAVE 1'-0 1/2" HEADER HEIGHT UNLESS OTHERWISE NOTED.

- GYPSUM NOTES**
- AT GARAGE:  
GYPSUM BOARD AT COMMON WALLS, CEILING, BEAM WRAPS AND SUPPORTS PER STANDARD DETAIL FA-1(b) FIRE ASSEMBLIES OR AS REQUIRED BY LOCAL CODE.
- AT STAIRS:  
1/2" GYPSUM BOARD AT UNDERSIDE OF STAIRS AND WALLS IN CLOSET
- BASEMENT WITH I-JOIST FLOOR SYSTEM ABOVE:  
WITH OPTION "SC1" - DRYWALL UNFINISHED BASEMENT CEILING AREA

- NOTES:**
- 1/2" GYPSUM WALL BOARD REQUIRED ON CEILING IN UNFINISHED AREAS WHEN NO SPRINKLER SYSTEM IS INSTALLED.
  - A MAXIMUM AREA OF 80 SQ FT MAY BE OMITTED AS NEEDED FOR INSTALLATION OF PLUMBING, ELECTRICAL, AND/OR HVAC (TYPICALLY AN 8'-0"x8'-0" CEILING SPACE ABOVE MECHANICAL AREA).
  - PROVIDE FIRE BLOCKING AS REQUIRED AT PERIMETER OF ANY AREAS WHERE DRYWALL HAS BEEN OMITTED.

|   |                            |                      |           |                        |
|---|----------------------------|----------------------|-----------|------------------------|
| SHEET NO.<br><b>A-6</b>                     | MODEL<br><b>PISA TORRE</b> | SET NO. <b>PS100</b> | REVISIONS | REMARKS                |
|   |                            | VERSION <b>02</b>    | DATE      |                        |
| DRAWING TITLE<br><b>BASEMENT FLOOR PLAN</b> | DRAWN BY                   | DATE:                | 08/07/16  | TH - DRAWING ALIGNMENT |
|   |                            | OPTION               |           |                        |
| OPTION DESCRIPTION                          |                            |                      |           |                        |
| <b>34</b>                                   |                            |                      |           |                        |

**NVR**  
NVR, Inc.  
Architectural Services  
Architects  
21 B... Co., MD 21102

C:\NVR\Solves\PISA\_TORRE\_PS100\_02\DCY-TE-0039\105769\Sheet\Lot\_Specific\34\_A-6\_BSMT\_LS.dwg 12/19/18 - 6:30 am

| FIRST FLOOR JACK SCHEDULE |                               |                 |             |             |
|---------------------------|-------------------------------|-----------------|-------------|-------------|
| IDENTIFIER                | DESCRIPTION                   | OPTIONS         | ENG. NUM.   | REMARKS     |
| J01                       | JACK - (2) 2X4 SPF STUD GRADE |                 | 1051 / 1050 |             |
| J02                       | JACK - (2) 2X4 SPF STUD GRADE |                 | 1051 / 1050 |             |
| J03                       | JACK - (5) 2X4 SP#1           | SXC             | 1051        | STEEL PLATE |
| J04                       | JACK - (5) 2X4 SP#1           | SXC             | 1051        | STEEL PLATE |
| J05                       | JACK - (2) 2X4 SPF STUD GRADE | ZCC / SXC       | 1062        |             |
| J06                       | JACK - (2) 2X4 SPF STUD GRADE | ZCC / SXC       | 1062        |             |
| J15                       | JACK - (2) 2X4 SPF STUD GRADE | D6T / ZCC / SXC | 1034        |             |
| J16                       | JACK - (2) 2X4 SPF STUD GRADE | D6T / ZCC / SXC | 1034        |             |
| J54                       | JACK - (3) 2X6 SPF STUD GRADE | EES / SXC       | 1050        | STEEL PLATE |
| J55                       | JACK - (3) 2X4 SP#1           | EES / SXC       | 1050        | STEEL PLATE |
| J83                       | JACK - (3) 2X4 SPF STUD GRADE | GCF / ZCC       | 1006        |             |
| J84                       | JACK - (3) 2X4 SPF STUD GRADE | GCF / ZCC       | 1006        |             |
| J83                       | JACK - (2) 2X4 SPF STUD GRADE | GCF             | 1064        |             |
| J84                       | JACK - (2) 2X4 SPF STUD GRADE | GCF             | 1064        |             |

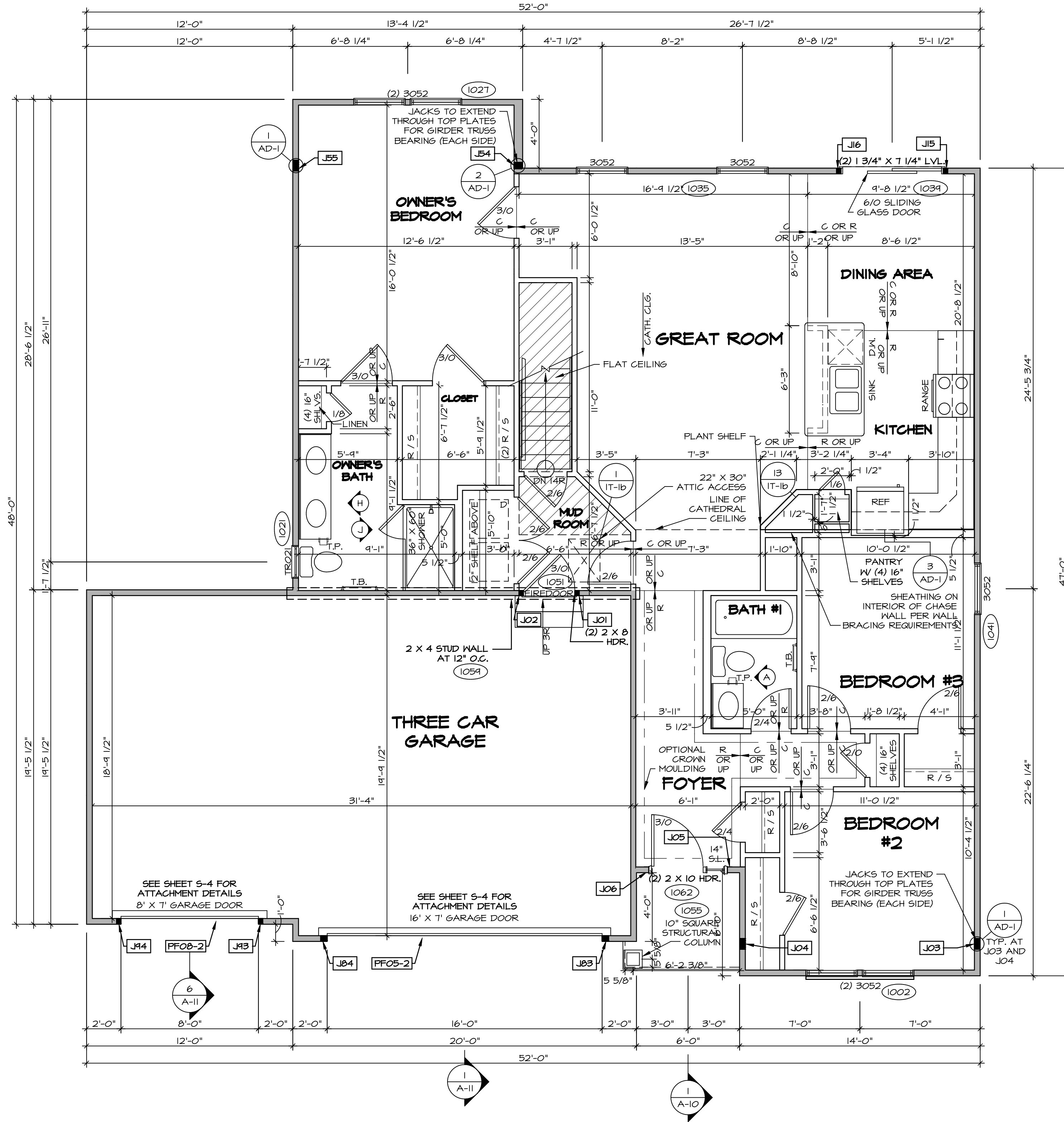
| LEGEND |   |
|--------|---|
|        | BEARING WALL                            |
|        | NON BEARING WALL                        |
|        | INDICATES BEARING FROM POINT-LOAD ABOVE |
|        | JACKS                                   |
|        | BEAM/HEADER                             |
|        | PAD FOOTING                             |
|        | STEEL COLUMN                            |
|        | PORTAL FRAME                            |
|        | JOIST/TRUSS                             |
|        | LVL                                     |
|        | ENGINEERING PAGE NUMBER                 |

SEE FC DETAILS FOR FRAMING CONNECTORS

| FIELD INSTALLED FIRST FLOOR BEAM/HEADER SCHEDULE |                           |        |           |           |            |
|--|---------------------------|--------|-----------|-----------|------------|
| IDENTIFIER                                       | DESCRIPTION               | LENGTH | OPTIONS   | ENG. NUM. | REMARKS    |
| PF05-2   | LVL - 14                  | 14'-4" | GCF / ZCC | 1006      | 2 PLYM, 2A |
| PF06-2   | EXT HEADER - 2X12 - 2 PLY | 11'-4" | GCF       | 1064      |            |

**LVL PLY TO PLY FASTENING SCHEDULE:**

1.A - (2) PLY UP TO AND INCLUDING 11 7/8" TALL; FASTEN PLYS W/ (2) ROWS 16D NAILS AT 12" O.C.  
 2.A - (2) PLY 1/4" TO AND 18" TALL (INCLUSIVE); FASTEN PLYS W/ (3) ROWS 16D NAILS AT 12" O.C.  
 3.A - (2) PLY 20" TALL AND OVER; FASTEN PLYS W/ (4) ROWS 16D NAILS AT 12" O.C.  
 4.A - (3) PLY UP TO AND INCLUDING 11 7/8" TALL; FASTEN PLYS W/ (2) ROWS 16D NAILS AT 12" O.C. FROM EACH SIDE  
 5.A - (3) PLY 1/4" TO AND 18" TALL (INCLUSIVE); FASTEN PLYS W/ (3) ROWS 16D NAILS AT 12" O.C.  
 6.A - (3) PLY 20" TALL AND OVER; FASTEN PLYS W/ (4) ROWS 16D NAILS AT 12" O.C. FROM EACH SIDE



**FIRST FLOOR PLAN**  
 SCALE: 1/4" = 1'-0"

**FLOOR PLAN NOTES**

- ALL HEADERS ARE (2) 2x6 w/ 2x4 WALLS OR (3) 2x6 w/ 2x6 WALLS, UNLESS OTHERWISE NOTED.
- ALL HEADERS TO HAVE (1) 2x4 OR 2x6 JACK EACH END, UNLESS OTHERWISE NOTED.
- ALL EXTERIOR WALLS TO BE 4" AND ALL INTERIOR WALLS TO BE 3 1/2", UNLESS OTHERWISE NOTED.
- HATCHED AREAS INDICATE DROPPED CEILING. ALL DROPPED CEILING ARE 12" UNLESS OTHERWISE NOTED.
- SEE "BRACED WALL PANEL DETAIL SHEET" FOR SPECIAL WALL FRAMING LOCATIONS AND HEADER SIZES, IF APPLICABLE.
- SEE STANDARD DETAIL CATEGORY "IT" SHEET(S) FOR INTERIOR TRIM DETAILS.
- SEE ARCHITECTURAL DETAIL SHEET "AD" FOR HOUSE SPECIFIC INTERIOR TRIM OPTION TABLE.
- ALL WINDOWS HAVE T-0 1/2" HEADER HEIGHT UNLESS OTHERWISE NOTED.

**GYPSUM NOTES**

**AT GARAGE:**  
 GYPSUM BOARD AT COMMON WALLS, CEILING, BEAM WRAPS AND SUPPORTS PER STANDARD DETAIL FA-1(b) FIRE ASSEMBLIES OR AS REQUIRED BY LOCAL CODE.

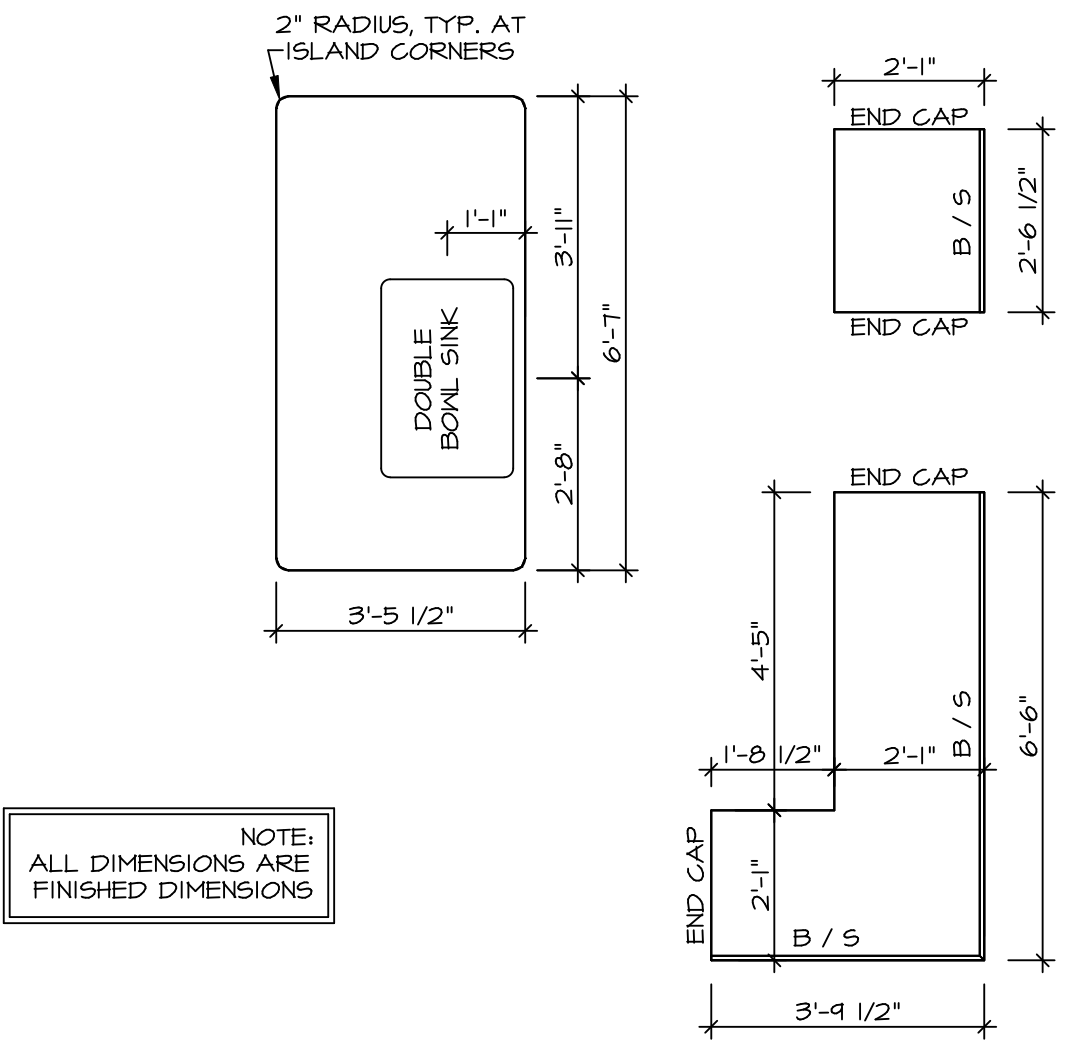
**AT STAIRS:**  
 1/2" GYPSUM BOARD AT UNDERSIDE OF STAIRS AND WALLS IN CLOSET

**BASEMENT WITH 1-JOIST FLOOR SYSTEM ABOVE:**  
 WITH OPTION "SG1" - DRYWALL UNFINISHED BASEMENT CEILING AREA

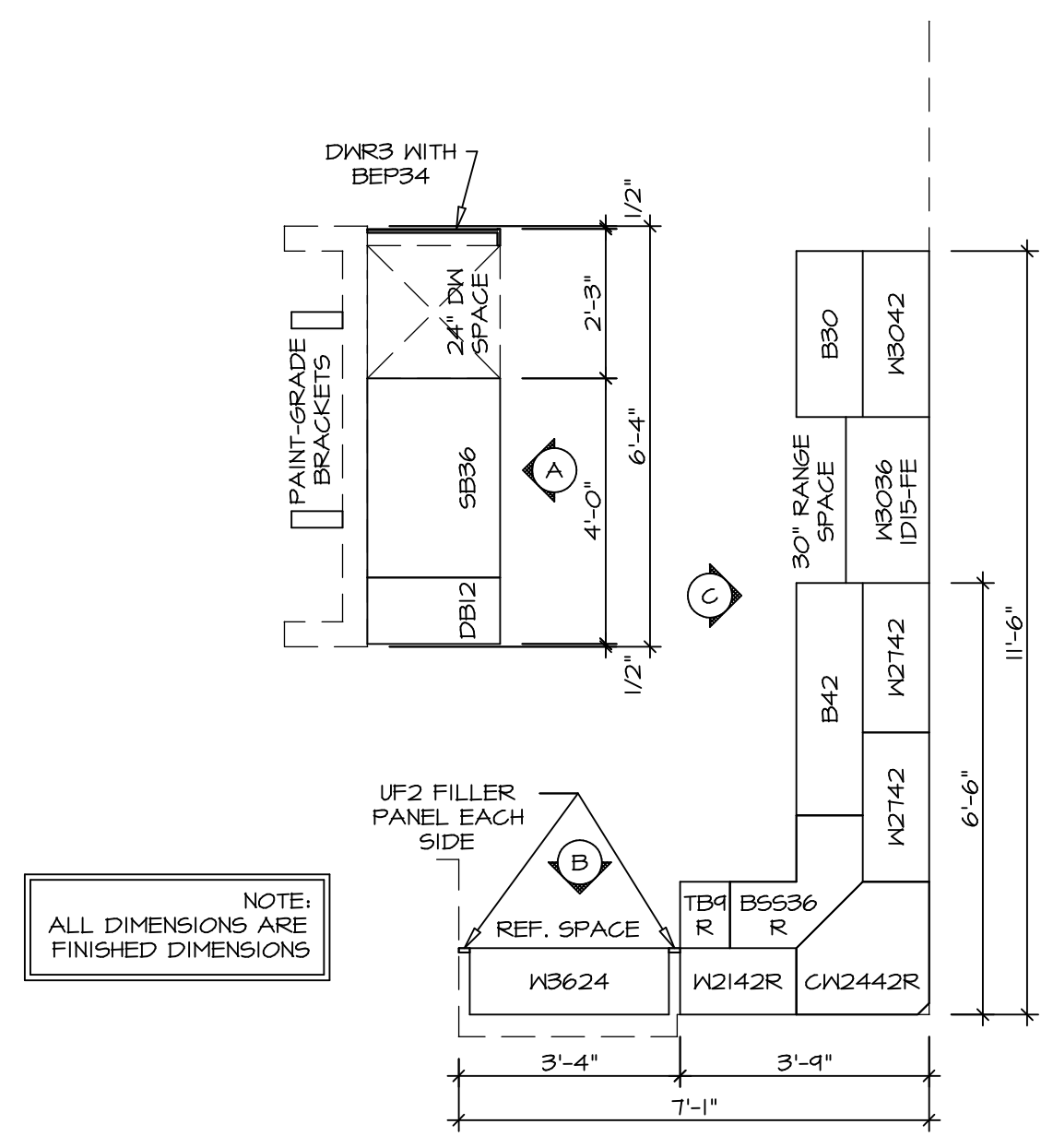
**NOTES:**

- 1/2" GYPSUM WALL BOARD REQUIRED ON CEILING IN UNFINISHED AREAS WHEN NO SPRINKLER SYSTEM IS INSTALLED
- A MAXIMUM AREA OF 80 SQ FT MAY BE OMITTED AS NEEDED FOR INSTALLATION OF PLUMBING, ELECTRICAL, AND/OR HVAC (TYPICALLY AN 8'-0"x8'-0" CEILING SPACE ABOVE MECHANICAL AREA).
- PROVIDE FIRE BLOCKING AS REQUIRED AT PERIMETER OF ANY AREAS WHERE DRYWALL HAS BEEN OMITTED.

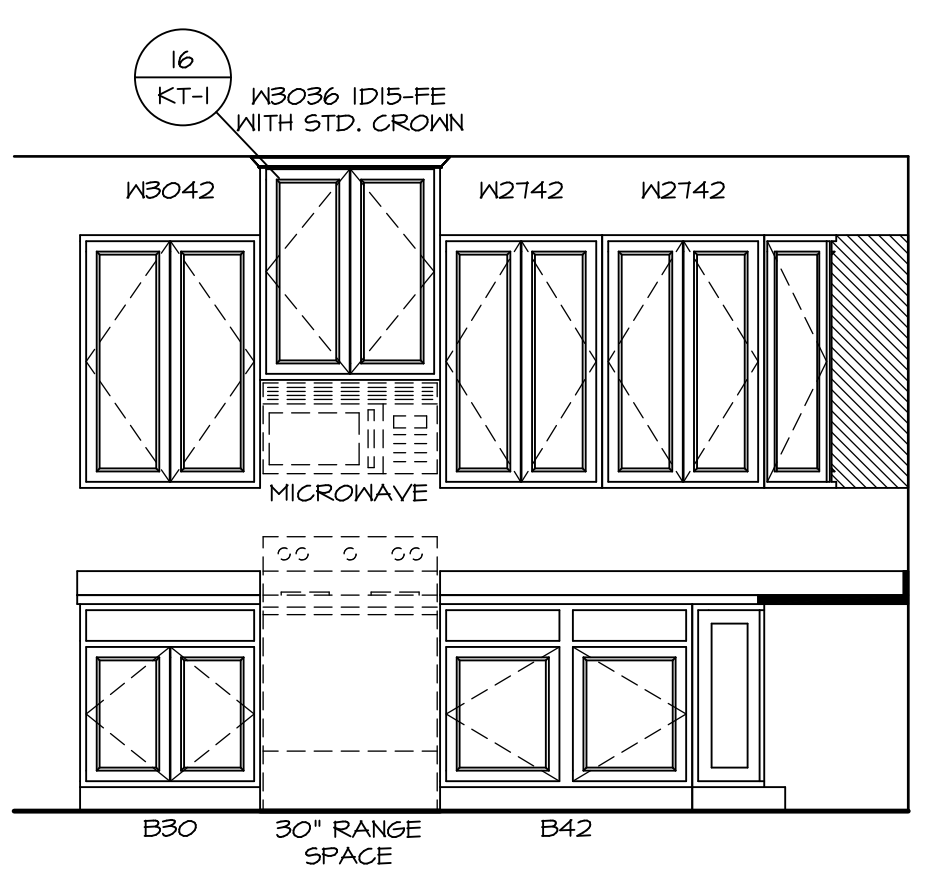
|                    |                            |  |          |
|--------------------|----------------------------|--|----------|
| MODEL              | PISA TORRE                 | SET NO.  | PS100    |
| DRAWING TITLE      | FIRST FLOOR PLAN           | VERSION  | 02       |
| OPTION DESCRIPTION | CORNERSTONE SPECIFICATIONS | DRAWN BY   |          |
|                    |                            | DATE:  | OPTION   |
| SHEET NO.          | A-7                        | <br>NVR, Inc.<br>Architectural Services<br>21 Bay Ct., Ste. A<br>Frederick, MD 21702 |          |
| REV. NO.           | DATE                       | REV. NO.   | DATE     |
| 1                  | 08/01/16                   | 1  | 08/01/16 |
| 2                  |                            | 2  |          |
| 3                  |                            | 3  |          |
| 4                  |                            | 4  |          |
| 5                  |                            | 5  |          |
| 6                  |                            | 6  |          |
| 7                  |                            | 7  |          |
| 8                  |                            | 8  |          |
| 9                  |                            | 9  |          |
| 10                 |                            | 10   |          |
| 11                 |                            | 11   |          |
| 12                 |                            | 12   |          |
| 13                 |                            | 13   |          |
| 14                 |                            | 14   |          |
| 15                 |                            | 15   |          |
| 16                 |                            | 16   |          |
| 17                 |                            | 17   |          |
| 18                 |                            | 18   |          |
| 19                 |                            | 19   |          |
| 20                 |                            | 20   |          |
| 21                 |                            | 21   |          |
| 22                 |                            | 22   |          |
| 23                 |                            | 23   |          |
| 24                 |                            | 24   |          |
| 25                 |                            | 25   |          |
| 26                 |                            | 26   |          |
| 27                 |                            | 27   |          |
| 28                 |                            | 28   |          |
| 29                 |                            | 29   |          |
| 30                 |                            | 30   |          |
| 31                 |                            | 31   |          |
| 32                 |                            | 32   |          |
| 33                 |                            | 33   |          |
| 34                 |                            | 34   |          |
| 35                 |                            | 35   |          |
| 36                 |                            | 36   |          |
| 37                 |                            | 37   |          |
| 38                 |                            | 38   |          |
| 39                 |                            | 39   |          |
| 40                 |                            | 40   |          |
| 41                 |                            | 41   |          |
| 42                 |                            | 42   |          |
| 43                 |                            | 43   |          |
| 44                 |                            | 44   |          |
| 45                 |                            | 45   |          |
| 46                 |                            | 46   |          |
| 47                 |                            | 47   |          |
| 48                 |                            | 48   |          |
| 49                 |                            | 49   |          |
| 50                 |                            | 50   |          |
| 51                 |                            | 51   |          |
| 52                 |                            | 52   |          |
| 53                 |                            | 53   |          |
| 54                 |                            | 54   |          |
| 55                 |                            | 55   |          |
| 56                 |                            | 56   |          |
| 57                 |                            | 57   |          |
| 58                 |                            | 58   |          |
| 59                 |                            | 59   |          |
| 60                 |                            | 60   |          |
| 61                 |                            | 61   |          |
| 62                 |                            | 62   |          |
| 63                 |                            | 63   |          |
| 64                 |                            | 64   |          |
| 65                 |                            | 65   |          |
| 66                 |                            | 66   |          |
| 67                 |                            | 67   |          |
| 68                 |                            | 68   |          |
| 69                 |                            | 69   |          |
| 70                 |                            | 70   |          |
| 71                 |                            | 71   |          |
| 72                 |                            | 72   |          |
| 73                 |                            | 73   |          |
| 74                 |                            | 74   |          |
| 75                 |                            | 75   |          |
| 76                 |                            | 76   |          |
| 77                 |                            | 77   |          |
| 78                 |                            | 78   |          |
| 79                 |                            | 79   |          |
| 80                 |                            | 80   |          |
| 81                 |                            | 81   |          |
| 82                 |                            | 82   |          |
| 83                 |                            | 83   |          |
| 84                 |                            | 84   |          |
| 85                 |                            | 85   |          |
| 86                 |                            | 86   |          |
| 87                 |                            | 87   |          |
| 88                 |                            | 88   |          |
| 89                 |                            | 89   |          |
| 90                 |                            | 90   |          |
| 91                 |                            | 91   |          |
| 92                 |                            | 92   |          |
| 93                 |                            | 93   |          |
| 94                 |                            | 94   |          |
| 95                 |                            | 95   |          |
| 96                 |                            | 96   |          |
| 97                 |                            | 97   |          |
| 98                 |                            | 98   |          |
| 99                 |                            | 99   |          |
| 100                |                            | 100  |          |



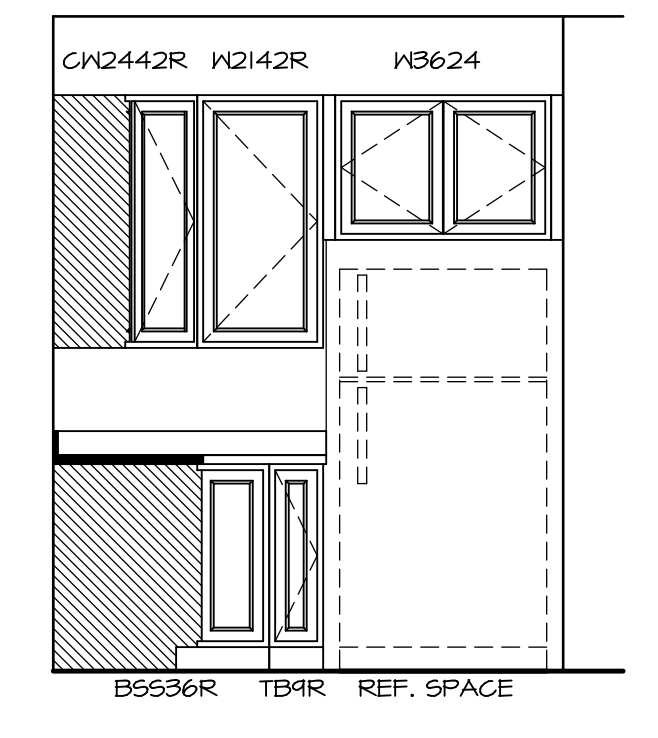
**(KT-3209)  
COUNTERTOP LAYOUT** 2  
SCALE: 3/8" = 1'-0" A-13



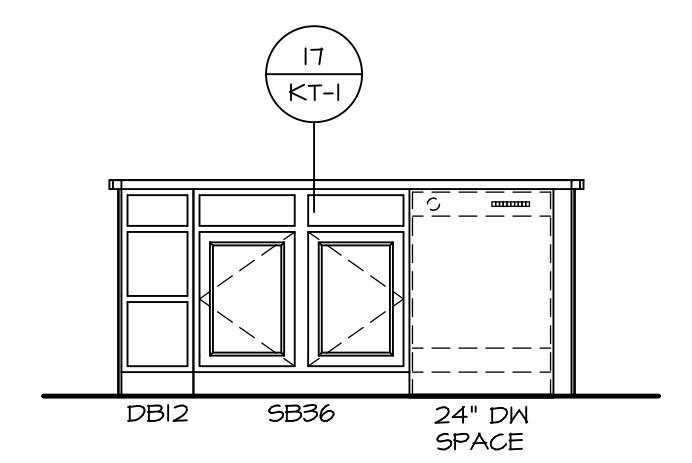
**(KC-3209)  
CABINET LAYOUT** 1  
SCALE: 3/8" = 1'-0" A-13



**CABINET ELEVATION** C  
SCALE: 3/8" = 1'-0"

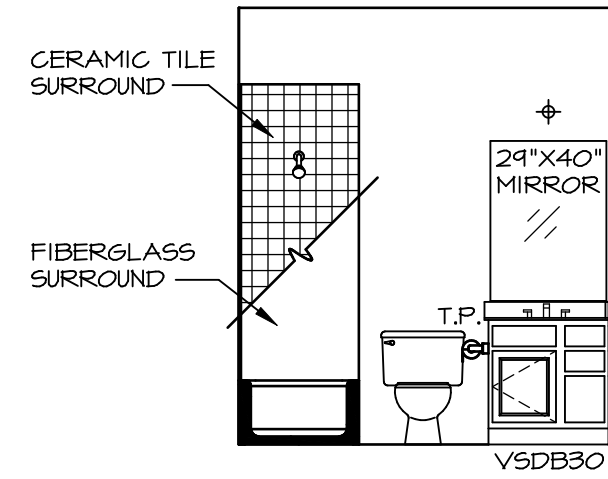


**CABINET ELEVATION** B  
SCALE: 3/8" = 1'-0"

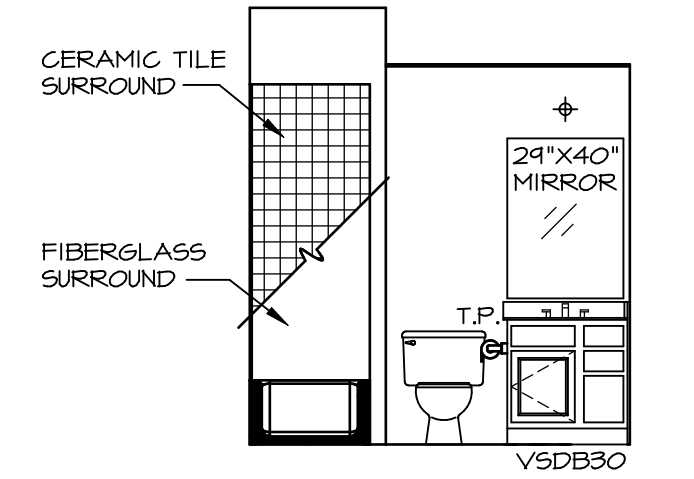


**CABINET ELEVATION** A  
SCALE: 3/8" = 1'-0"

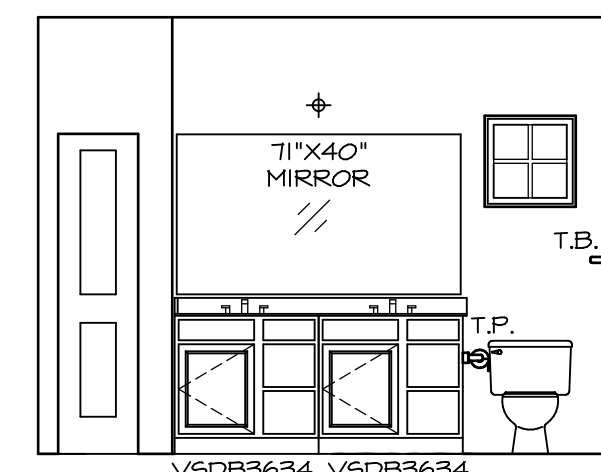
|                                |   |   |         |
|--------------------------------|---|---|---------|
| SHEET NO.<br><b>A-13</b><br>48 | MODEL<br><b>PISA TORRE</b><br>DRAWING TITLE<br>KITCHENS<br>OPTION DESCRIPTION   | SET NO.<br>PST00<br>VERSION<br>02<br>DRAWN BY<br>BDH<br>DATE<br>3/24/15<br>OPTION | REMARKS |
|                                | NVR, Inc., owner, expressly reserves the copyright in these plans. These plans are not to be reproduced, changed, copied, or otherwise used in any way without the prior written consent of NVR, Inc. |   |         |
|                                | <b>NVR</b><br>Architectural Services<br>21 Park Plaza, Suite A<br>Frederick, MD 21702   |   |         |
|                                | PROJECT LOCATION:<br>1057669A Street, Lot. Specific 48, A-13<br>KIT_LS.dwg<br>12/19/18 - 6:51 am  |   |         |



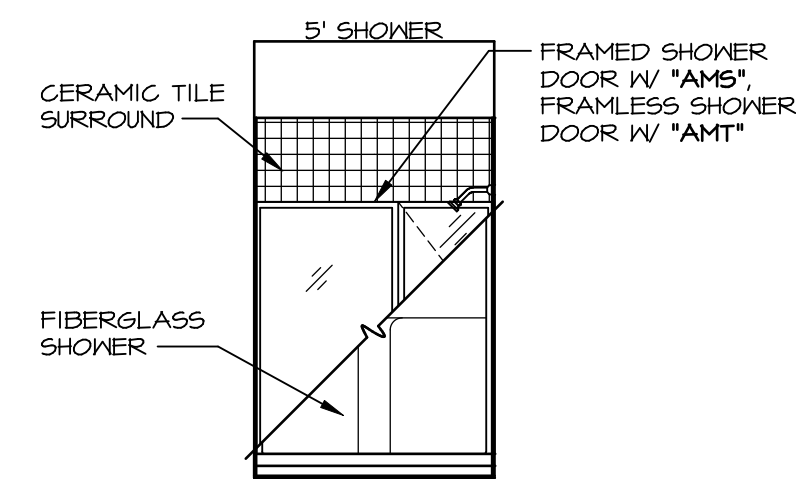
**A BATH #1**  
SCALE: 1/4" = 1'-0"



**P BASEMENT BATH**  
SCALE: 1/4" = 1'-0"



**H OWNER'S BATH**  
SCALE: 1/4" = 1'-0"



**J OWNER'S BATH**  
SCALE: 1/4" = 1'-0"

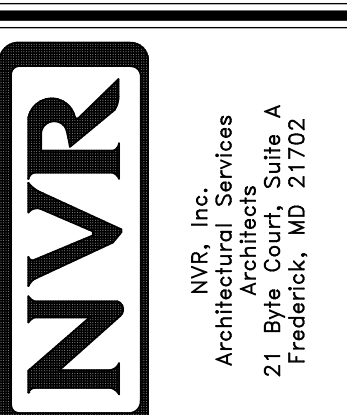
**NOTES:**

1. TEMPERED GLASS SHOWER ENCLOSURE WITH SWING DOOR OR OPTIONAL SLIDING DOOR BY DIVISION
2. TUB ACCESS PANELS PROVIDED AS NEEDED, ALL MATERIALS BY DIVISION
3. REFER TO SHEET IT-2 FOR TUB AND SHOWER DETAILS.
4. ALL VSD24-42 DRAWERS TO BE SET ON RIGHT HAND.
5. BATH ELEVATIONS ARE SHOWN PER PLAN.

NOTES  
• WINDOWS VARY PER OPTION.

| REV. NO. | DATE     | DESCRIPTION             |
|----------|----------|-------------------------|
| 1        | 08/07/16 | TM - DRAINING ALIGNMENT |

NVR, Inc., owner, expressly reserves its copyright in these plans. These plans are not to be reproduced, changed, copied, or otherwise used in any way without the written consent of NVR, Inc.



|                    |                 |
|--------------------|-----------------|
| MODEL              | PISA TORRE      |
| DRAWING TITLE      | BATH ELEVATIONS |
| SHEET NO.          | A-14            |
| OPTION DESCRIPTION | 53              |
| SET NO.            | PSTCO           |
| VERSION            | O2              |
| DRAWN BY           |                 |
| DATE:              | OPTION          |