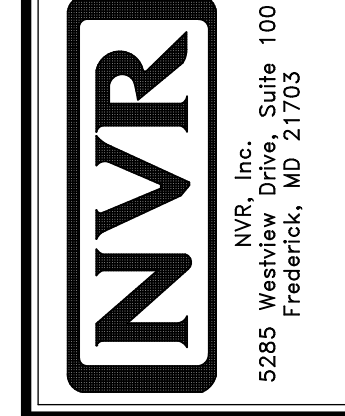


**PLUMBING PLAN**  
SCALE: 1/4" = 1'-0"

SHEET NO. <b>A-5</b>	MODEL <b>CAROLINA PLACE</b>	SET NO. <b>CNPOO</b>
OPTION DESCRIPTION <b>PLUMBING PLAN</b>	DRAWING TITLE <b>PLUMBING PLAN</b>	VERSION <b>02</b>
DATE:	DATE:	DRAWN BY:
OPTION	OPTION	

36



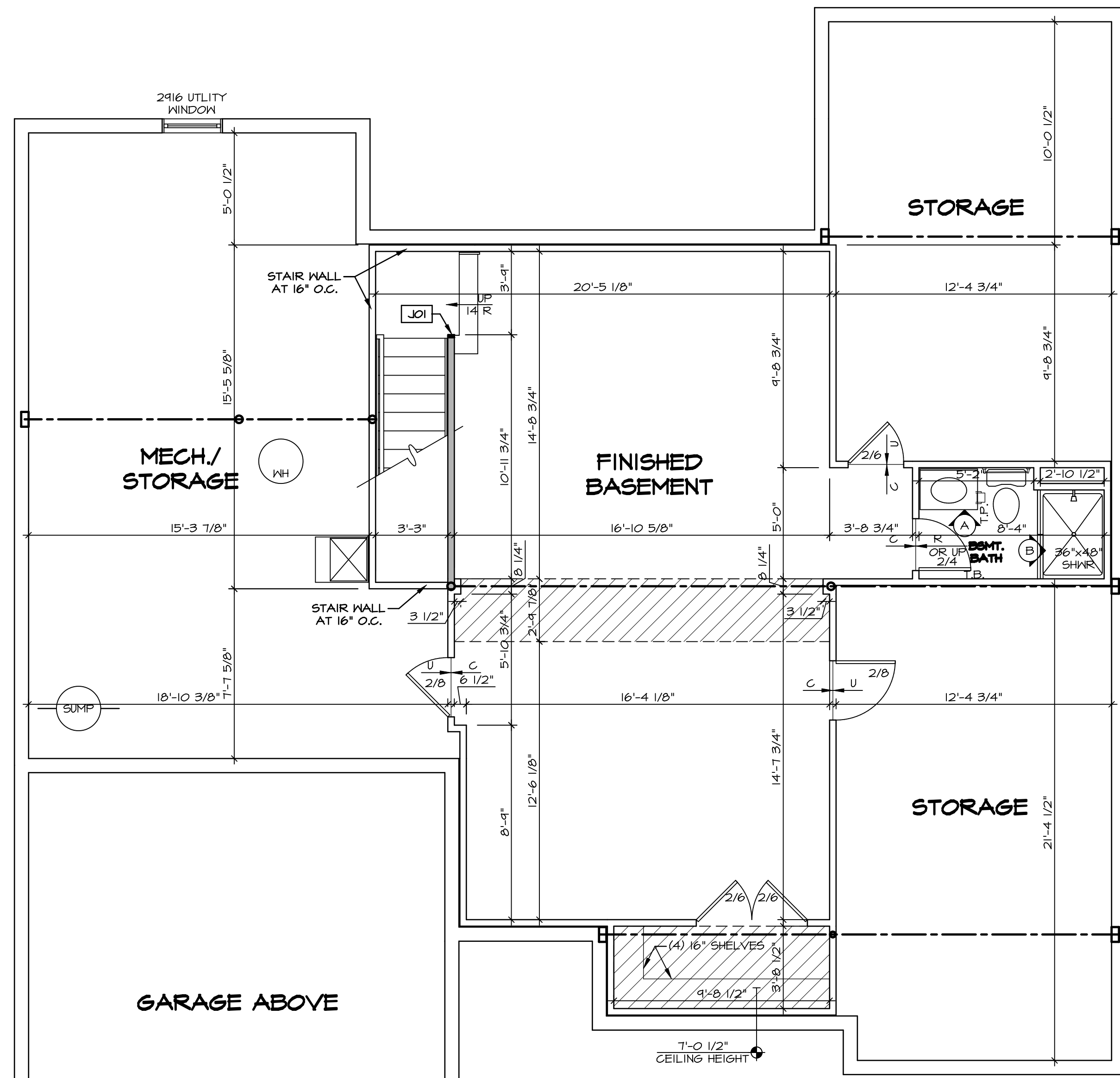
© NVR, Inc. All rights reserved. The information contained herein is the property of NVR, Inc. and is not to be reproduced, changed or copied in any form without the prior written permission of NVR, Inc.

REV. NO. DATE

REMARKS

BASEMENT JACK SCHEDULE				
IDENTIFIER	DESCRIPTION	OPTIONS	ENG. NUM.	REMARKS
J01	JACK - 2x4 SPF STUD GRADE		B016	

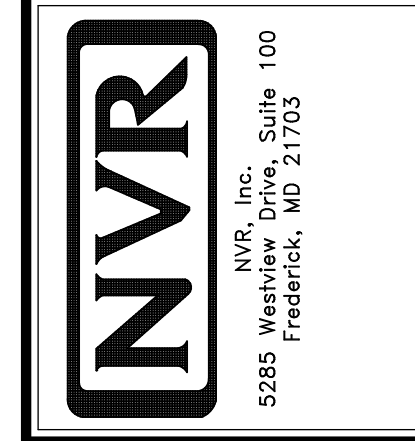
LEGEND	
	BEARING WALL
	NON BEARING WALL
	INDICATES BEARING FROM POINT-LOAD ABOVE
	JACKS
	BEAM/HEADER
	PAD FOOTING
	STEEL COLUMN
	PORTAL FRAME
	JOIST/TRUSS
	LVL
	ENGINEERING PAGE NUMBER
SEE FC DETAILS FOR FRAMING CONNECTORS	



- FLOOR PLAN NOTES**
- ALL HEADERS ARE (2) 2x6 w/ 2x4 WALLS OR (3) 2x6 w/ 2x6 WALLS, UNLESS OTHERWISE NOTED.
  - ALL HEADERS TO HAVE (1) 2x4 OR 2x6 JACK AND KING STUD EACH END, UNLESS OTHERWISE NOTED.
  - ALL EXTERIOR WALLS TO BE 4" w/ OSB OR 3 1/2" w/ T-PLY, ALL INTERIOR WALLS TO BE 3 1/2", UNLESS OTHERWISE NOTED.
  - HATCHED AREAS INDICATE DROPPED CEILINGS. ALL DROPPED CEILINGS ARE 12" UNLESS OTHERWISE NOTED.
  - SEE "BRACED WALL PANEL DETAIL SHEET" FOR SPECIAL WALL FRAMING LOCATIONS AND HEADER SIZES, IF APPLICABLE.
  - SEE STANDARD DETAIL CATEGORY "IT" SHEET(S) FOR INTERIOR TRIM DETAILS.
  - SEE ARCHITECTURAL DETAIL SHEET "AD" FOR HOUSE SPECIFIC INTERIOR TRIM OPTION TABLE.
  - ALL WINDOWS HAVE T-0 1/2" HEADER HEIGHT UNLESS OTHERWISE NOTED.
  - ALL HEADERS IN NON-BEARING WALLS SHALL BE A SINGLE FLAT 2x4 OR 2x6 ATTACHED TO CRIPPLES ABOVE, UNLESS OTHERWISE NOTED.
  - TANKED WATER HEATER SHOWN AS BASE CONDITION, OPTIONAL TANKLESS WATER HEATER IS AVAILABLE IN LIEU OF TANKED WATER HEATER.
- GYPSTUM NOTES**
- AT GARAGE:  
GYPSUM BOARD AT COMMON WALLS, CEILING, BEAM WRAPS AND SUPPORTS PER STANDARD DETAIL FA-1(b) FIRE ASSEMBLIES OR AS REQUIRED BY LOCAL CODE.
- AT STAIRS:  
1/2" GYPSUM BOARD AT UNDERSIDE OF STAIRS AND WALLS IN CLOSET

REV. NO.	DATE	REMARKS
1	08/04/16	N-DRAWING ALIGNMENT

© NVR, Inc. expressly reserves the right to modify these plans without notice. These plans are not to be reproduced, changed or copied in any way without the written consent of NVR, Inc.



SET NO.	CNPOO
VERSION	O2
DRAWN BY	
DATE:	
OPTION	FBA

MODEL	CAROLINA PLACE
DRAWING TITLE	BASEMENT FLOOR PLAN
OPTION DESCRIPTION	FULL BASEMENT FOUNDATION
SHEET NO.	A-6
40	

**1** **BASEMENT FLOOR PLAN**  
SCALE: 1/4" = 1'-0"

**LEGEND**

	BEARING WALL
	NON BEARING WALL
	INDICATES BEARING FROM POINT-LOAD ABOVE
	JACKS
	BEAM/HEADER
	PAD FOOTING
	STEEL COLUMN
	PORTAL FRAME
	JOIST/TRUSS
	LVL
	ENGINEERING PAGE NUMBER

SEE FC DETAILS FOR FRAMING CONNECTORS

**LVL PLY TO PLY FASTENING SCHEDULE:**

1A - (2) PLY UP TO AND INCLUDING 11 7/8" TALL; FASTEN PLYS W/ (2) ROWS 16D NAILS AT 12" O.C.  
 2A - (2) PLY 14" TO AND 18" TALL (INCLUSIVE); FASTEN PLYS W/ (3) ROWS 16D NAILS AT 12" O.C.  
 3A - (2) PLY 20" TALL AND OVER; FASTEN PLYS W/ (4) ROWS 16D NAILS AT 12" O.C.  
 4A - (3) PLY UP TO AND INCLUDING 11 7/8" TALL; FASTEN PLYS W/ (2) ROWS 16D NAILS AT 12" O.C. FROM EACH SIDE  
 5A - (3) PLY 14" TO AND 18" TALL (INCLUSIVE); FASTEN PLYS W/ (3) ROWS 16D NAILS AT 12" O.C. FROM EACH SIDE  
 6A - (3) PLY 20" TALL AND OVER; FASTEN PLYS W/ (4) ROWS 16D NAILS AT 12" O.C. FROM EACH SIDE

**FIRST FLOOR BEAM/HEADER SCHEDULE**

IDENTIFIER	DESCRIPTION	LENGTH	OPTIONS	ENG. NUM.	REMARKS
B100	BEAM BUILT 2X12 - 2 PLY	8'-6"	6CF	1051	2 PLY, FIELD INSTALLED
PFO2	BEAM BUILT 2X12 - 2 PLY	14'-8"	6CF	1051	2-PLY, PORTAL FRAME

**FIRST FLOOR JACK SCHEDULE**

IDENTIFIER	DESCRIPTION	OPTIONS	ENG. NUM.	REMARKS
J01	JACK - (4) 2X4 SP#1		1044	EXT. THRU TOP PLATES
J02	JACK - (4) 2X4 SP#1		1044	EXT. THRU TOP PLATES
J03	JACK - (2) 2X4 SPF STUD GRADE	ELA	1024	
J04	JACK - (2) 2X4 SPF STUD GRADE		1027	
J05	JACK - (2) 2X4 SPF STUD GRADE	ELA	1027	
J06	JACK - (2) 2X4 SPF STUD GRADE	MAA, EFE	1024	
J24	JACK - (2) 2X4 SPF STUD GRADE	6CF	1033	
J25	JACK - (2) 2X4 SPF STUD GRADE	6CF	1033	
J26	JACK - (2) 2X4 SPF STUD GRADE	6CF	1051	
J27	JACK - (2) 2X4 SPF STUD GRADE	6CF	1051	
J28	JACK - (3) 2X4 SP#1	6CF	1050	EXT. THRU TOP PLATES
J29	JACK - (3) 2X4 SP#1	6CF	1050	EXT. THRU TOP PLATES

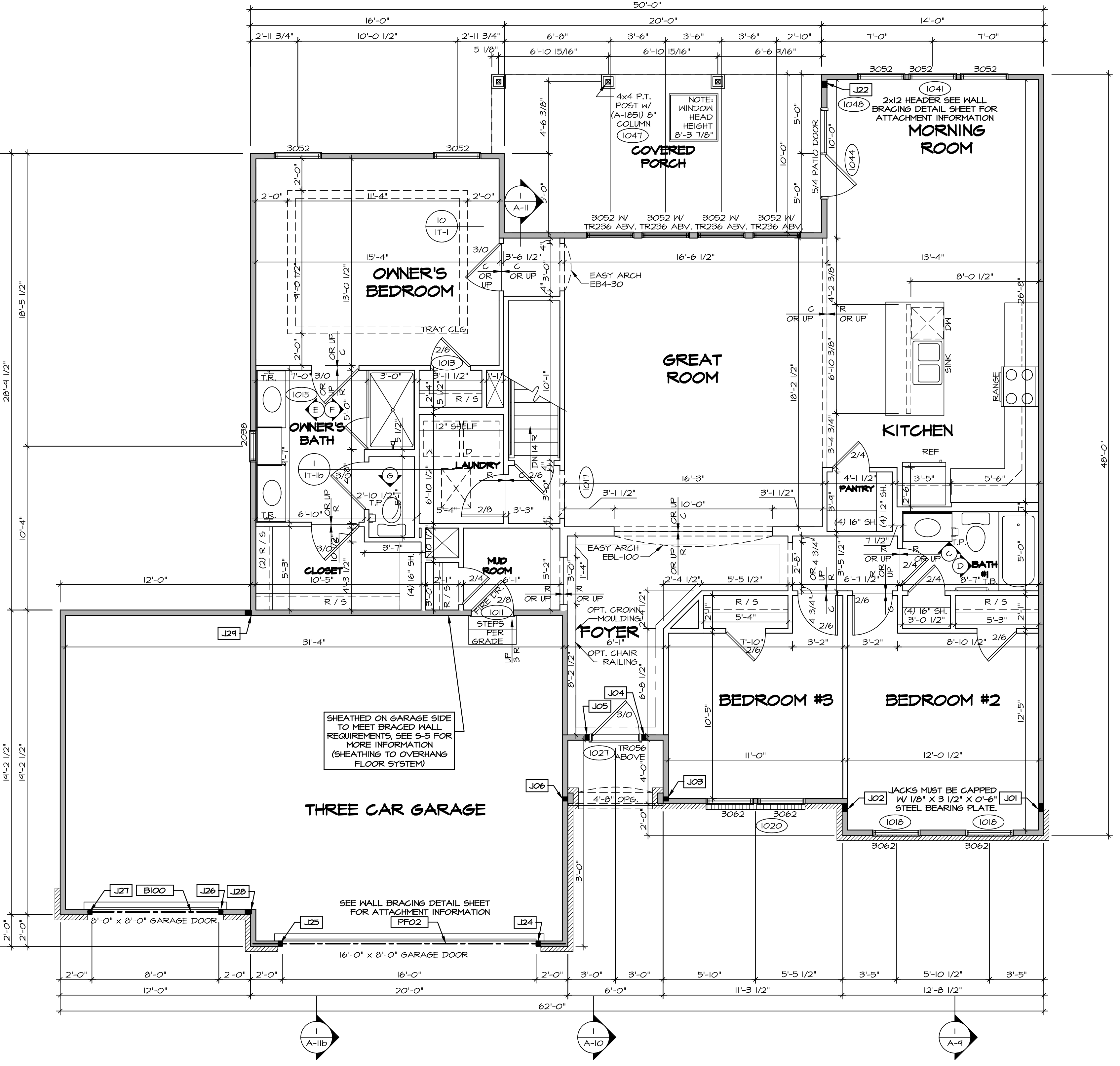
**FLOOR PLAN NOTES**

- ALL HEADERS ARE (2) 2x6 W/ 2x4 WALLS OR (3) 2x6 W/ 2x6 WALLS, UNLESS OTHERWISE NOTED.
- ALL HEADERS TO HAVE (1) 2x4 OR 2x6 JACK AND KING STUD EACH END, UNLESS OTHERWISE NOTED.
- ALL EXTERIOR WALLS TO BE 4" W/ OSB OR 3 1/2" W/ T-PLY, ALL INTERIOR WALLS TO BE 3 1/2", UNLESS OTHERWISE NOTED.
- HATCHED AREAS INDICATE DROPPED CEILING. ALL DROPPED CEILING ARE 12" UNLESS OTHERWISE NOTED.
- SEE "BRACED WALL PANEL DETAIL SHEET" FOR SPECIAL WALL FRAMING LOCATIONS AND HEADER SIZES, IF APPLICABLE.
- SEE STANDARD DETAIL CATEGORY "IT" SHEET(S) FOR INTERIOR TRIM DETAILS.
- SEE ARCHITECTURAL DETAIL SHEET "AD" FOR HOUSE SPECIFIC INTERIOR TRIM OPTION TABLE.
- ALL WINDOWS HAVE T-O 1/2" HEADER HEIGHT UNLESS OTHERWISE NOTED.
- ALL HEADERS IN NON-BEARING WALLS SHALL BE A SINGLE FLAT 2X4 OR 2X6 ATTACHED TO CRIPPLES ABOVE, UNLESS OTHERWISE NOTED.
- TANKED WATER HEATER SHOWN AS BASE CONDITION, OPTIONAL, TANKLESS WATER HEATER IS AVAILABLE IN LIEU OF TANKED WATER HEATER.

**GYPSUM NOTES**

**AT GARAGE:**  
 GYPSUM BOARD AT COMMON WALLS, CEILING, BEAM WRAPS AND SUPPORTS PER STANDARD DETAIL FA-1(b) FIRE ASSEMBLIES OR AS REQUIRED BY LOCAL CODE.

**AT STAIRS:**  
 1/2" GYPSUM BOARD AT UNDERSIDE OF STAIRS AND WALLS IN CLOSET

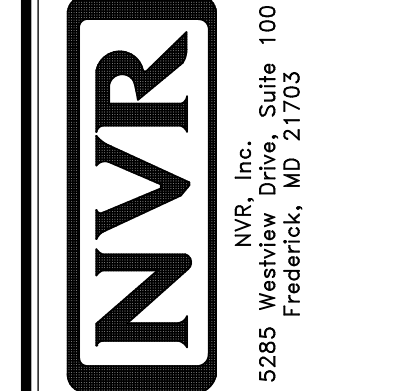


**FIRST FLOOR PLAN**  
 SCALE: 1/4" = 1'-0"

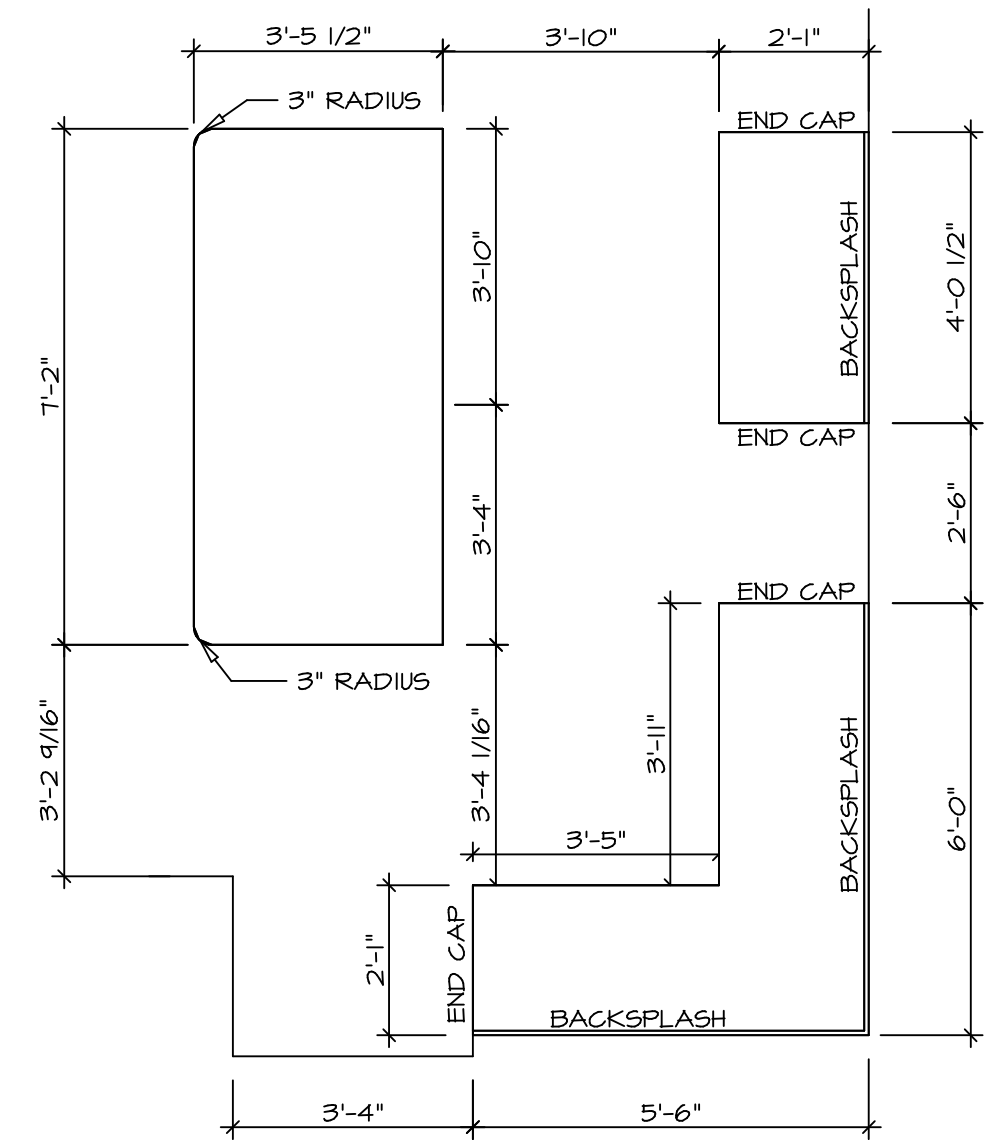
**REVISIONS**

REV. NO.	DATE	DESCRIPTION
1	08/04/16	NL-DRAWING ALIGNMENT
2	7/8/17	DRH - T-PLY CONVERSION

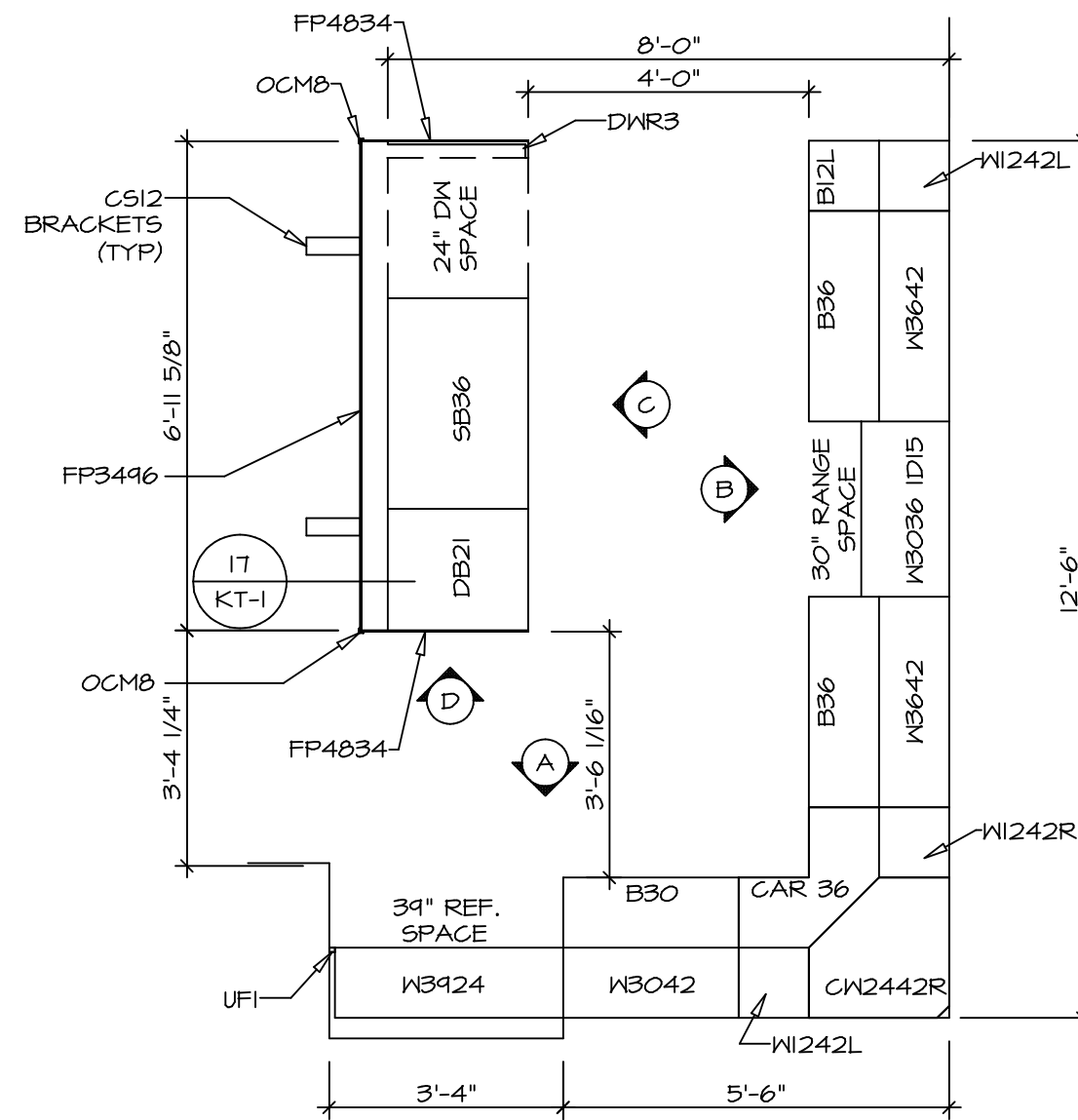
NVR, Inc. expressly reserves the right to modify or amend these plans at any time without notice. These plans are not to be reproduced, changed or altered in any way without the written consent of NVR, Inc.



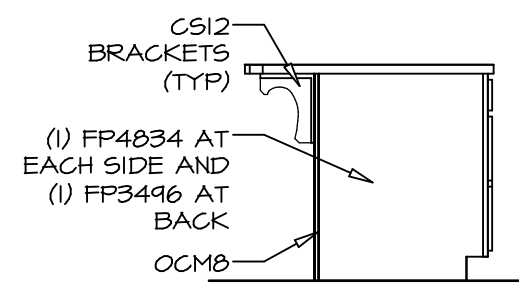
SHEET NO.	A-7
MODEL	CAROLINA PLACE
DRAWING TITLE	FIRST FLOOR PLAN
OPTION DESCRIPTION	
SET NO. CNP00	VERSION 02
DRAWN BY	
DATE:	
OPTION	
SHEET NO.	42



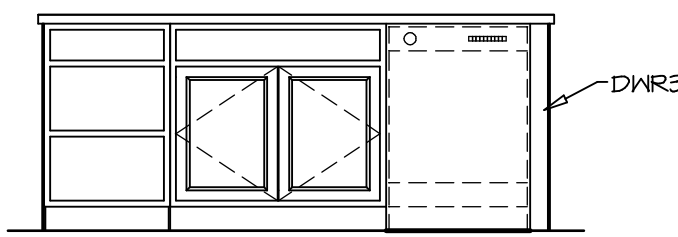
**KITCHEN COUNTERTOP PLAN - (KT-3117)**  
SCALE: 3/8" = 1'-0" 2 A-13



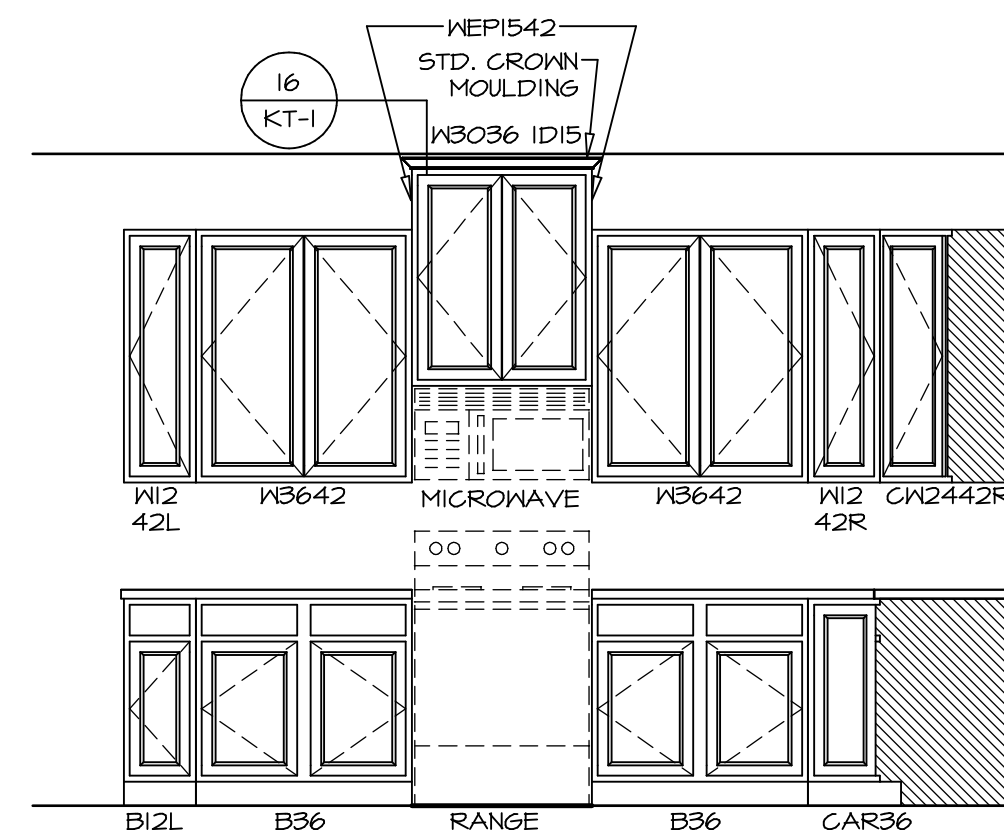
**KITCHEN CABINET PLAN - (KC-3117)**  
SCALE: 3/8" = 1'-0" 1 A-13



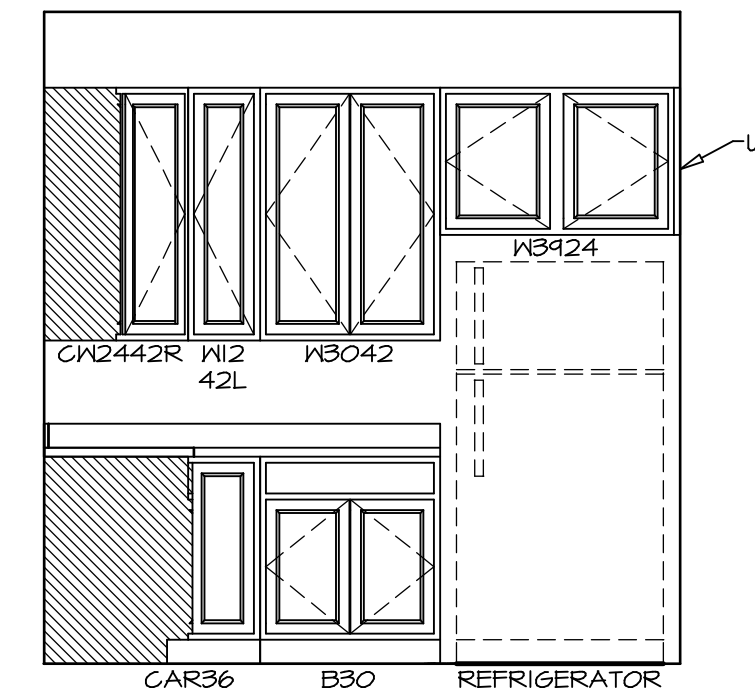
**KITCHEN ELEVATION**  
SCALE: 3/8" = 1'-0" D



**KITCHEN ELEVATION**  
SCALE: 3/8" = 1'-0" C



**KITCHEN ELEVATION**  
SCALE: 3/8" = 1'-0" B



**KITCHEN ELEVATION**  
SCALE: 3/8" = 1'-0" A

SET NO. CNP00  
VERSION 02  
DRAWN BY  
DATE: 6/7/16  
OPTION

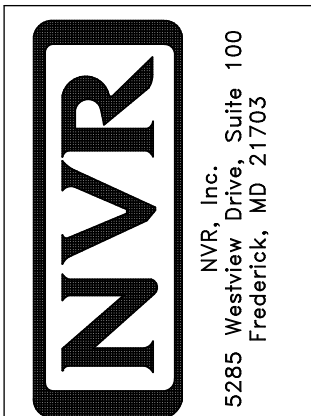
MODEL  
**CAROLINA PLACE**  
DRAWING TITLE  
KITCHENS  
OPTION DESCRIPTION

SHEET NO.  
**A-13**  
54

REV. NO. DATE

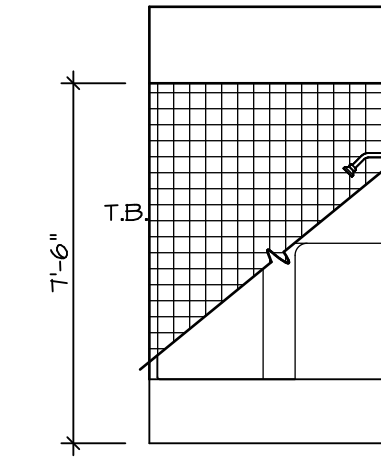
REMARKS

© NVR, Inc. expressly reserves the right to modify or change the design of the products shown in these plans. These plans are not to be reproduced, changed or altered in any way without the written consent of NVR, Inc.

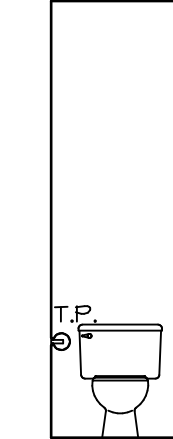


**NOTES:**

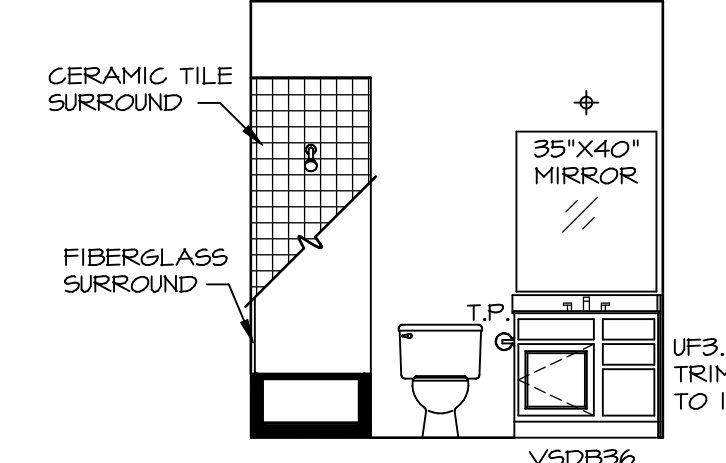
1. TEMPERED GLASS SHOWER ENCLOSURE WITH SWING DOOR OR OPTIONAL SLIDING DOOR BY DIVISION
2. TUB ACCESS PANELS PROVIDED AS NEEDED, ALL MATERIALS BY DIVISION
3. REFER TO SHEET IT-2 FOR TUB AND SHOWER DETAILS.
4. ALL VSDB24-42 DRAWERS TO BE SET ON RIGHT HAND.
5. BATH ELEVATIONS ARE SHOWN PER PLAN.



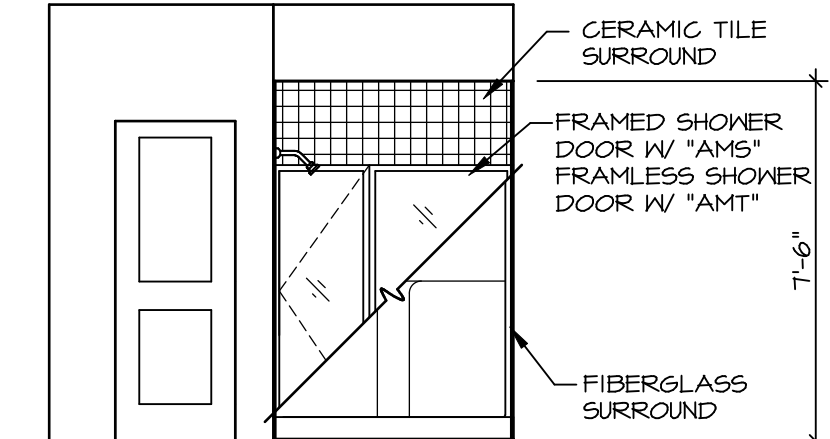
**D BATH #1**  
SCALE: 1/4" = 1'-0"



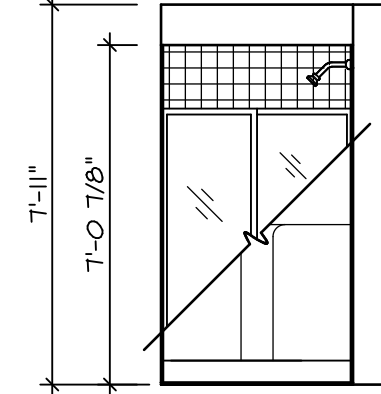
**G OWNER'S BATH**  
SCALE: 1/4" = 1'-0"



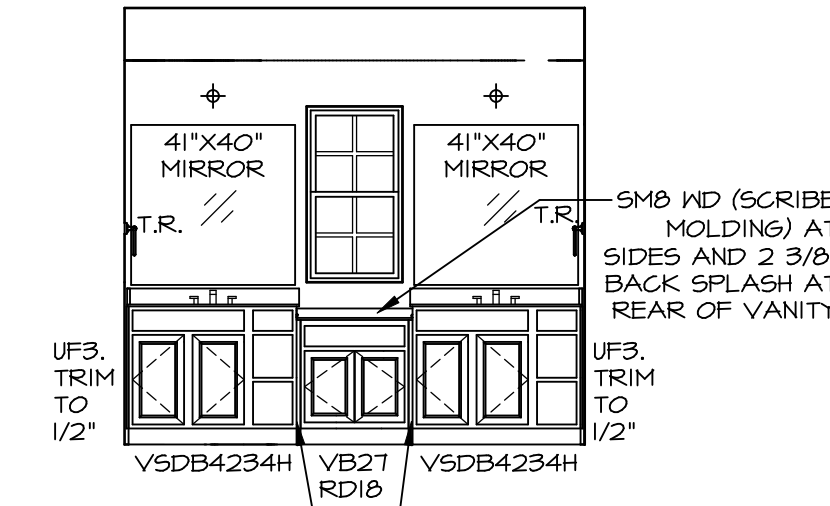
**C BATH #1**  
SCALE: 1/4" = 1'-0"



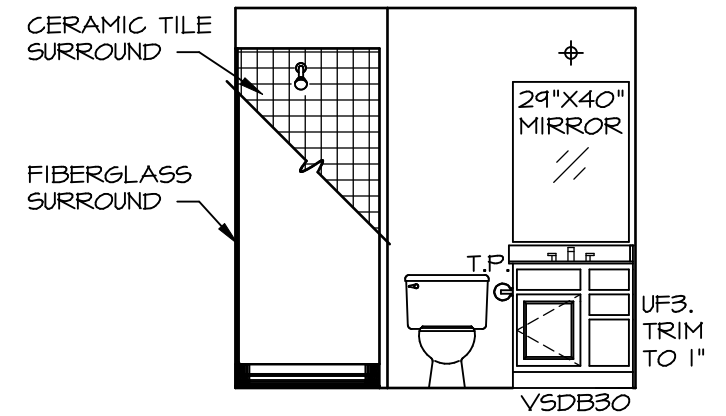
**F OWNER'S BATH**  
SCALE: 1/4" = 1'-0"



**B BSMT. BATH**  
SCALE: 1/4" = 1'-0"



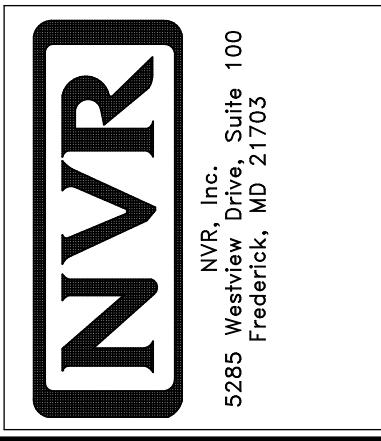
**E OWNER'S BATH**  
SCALE: 1/4" = 1'-0"



**A BSMT. BATH**  
SCALE: 1/4" = 1'-0"

REV. NO.	DATE	REMARKS
1	08/04/16	NL-DRAWING ALIGNMENT

© NVR, Inc. expressly reserves the right to modify or change these plans at any time without notice. These plans are not to be reproduced, changed or altered in any way without the written consent of NVR, Inc.



SET NO. CNP00	VERSION 02
DRAWN BY	DATE: 6/7/16
OPTION	

MODEL	CAROLINA PLACE
DRAWING TITLE	BATH ELEVATIONS
OPTION DESCRIPTION	