

BASEMENT FLOOR PLAN
 SCALE: 1/4" = 1'-0"

LEGEND

	BEARING WALL
	NON BEARING WALL
	INDICATES BEARING FROM POINT-LOAD ABOVE
	JACKS
	BEAM/HEADER
	PAD FOOTING
	STEEL COLUMN
	PORTAL FRAME
	JOIST/TRUSS
	LVL
	ENGINEERING PAGE NUMBER

SEE FC DETAILS FOR FRAMING CONNECTORS

- FLOOR PLAN NOTES**
- ALL HEADERS ARE (2) 2x6 w/ 2x4 WALLS OR (3) 2x6 w/ 2x6 WALLS, UNLESS OTHERWISE NOTED.
 - ALL HEADERS TO HAVE (1) 2x4 OR 2x6 JACK EACH END, UNLESS OTHERWISE NOTED.
 - ALL EXTERIOR WALLS TO BE 4" AND ALL INTERIOR WALLS TO BE 3 1/2", UNLESS OTHERWISE NOTED.
 - HATCHED AREAS INDICATE DROPPED CEILINGS. ALL DROPPED CEILINGS ARE 12" UNLESS OTHERWISE NOTED.
 - SEE "BRACED WALL PANEL DETAIL SHEET" FOR SPECIAL WALL FRAMING LOCATIONS AND HEADER SIZES, IF APPLICABLE.
 - SEE STANDARD DETAIL CATEGORY "IT" SHEET(S) FOR INTERIOR TRIM DETAILS.
 - SEE ARCHITECTURAL DETAIL SHEET "AD" FOR HOUSE SPECIFIC INTERIOR TRIM OPTION TABLE.
 - ALL WINDOWS HAVE 7'-0" 1/2" HEADER HEIGHT UNLESS OTHERWISE NOTED.

- GYPSUM NOTES**
- AT GARAGE:**
 GYPSUM BOARD AT COMMON WALLS, CEILING, BEAM WRAPS AND SUPPORTS PER STANDARD DETAIL FA-1(b) FIRE ASSEMBLIES OR AS REQUIRED BY LOCAL CODE.
- AT STAIRS:**
 1/2" GYPSUM BOARD AT UNDERSIDE OF STAIRS AND WALLS IN CLOSET
- BASEMENT WITH I-JOIST FLOOR SYSTEM ABOVE:**
 WITH OPTION "SC1" - DRYWALL UNFINISHED BASEMENT CEILING AREA
- NOTES:**
- 1/2" GYPSUM WALL BOARD REQUIRED ON CEILING IN UNFINISHED AREAS WHEN NO SPRINKLER SYSTEM IS INSTALLED.
 - A MAXIMUM AREA OF 80 SQ FT MAY BE OMITTED AS NEEDED FOR INSTALLATION OF PLUMBING, ELECTRICAL, AND/OR HVAC (TYPICALLY AN 8'-0"x8'-0" CEILING SPACE ABOVE MECHANICAL AREA).
 - PROVIDE FIRE BLOCKING AS REQUIRED AT PERIMETER OF ANY AREAS WHERE DRYWALL HAS BEEN OMITTED.

SHEET NO. A-6	MODEL PISA TORRE	SET NO. PS100	VERSION 02
		DRAWN BY	DATE:
OPTION DESCRIPTION BASEMENT FLOOR PLAN	OPTION	DRAWING TITLE	
		DATE:	
34	DRAWING DESCRIPTION	DRAWING TITLE	
		DATE:	

REMARKS

REV. NO. | DATE | DESCRIPTION

1 | 08/07/19 | TH - DRAWING ALIGNMENT

© NVR, Inc. NVR, Inc. expressly reserves the right to modify these plans without notice. These plans are not to be reproduced, changed, or altered in any way without the written consent of NVR, Inc.

NVR
 NVR, Inc. Suite 100
 5285 Westpark Drive
 Frederick, MD 21703

C:\NVR\Solves\PISA_TORRE_PS100_02\DCY-TE-004A\482358\Sheet\Lot_Specific\34_A-6_BSM1_LS.dwg 11/07/19 - 3:04 am

FIRST FLOOR JACK SCHEDULE					
IDENTIFIER	DESCRIPTION	OPTIONS	ENG. NUM.	REMARKS	
J01	JACK - (2) 2X4 SPF STUD GRADE		1051 / 1050		
J02	JACK - (2) 2X4 SPF STUD GRADE		1051 / 1050		
J03	JACK - (5) 2X4 SP#1	SXC	1051		STEEL PLATE
J04	JACK - (5) 2X4 SP#1	SXC	1051		STEEL PLATE
J07	JACK - (3) 2X4 SPF STUD GRADE	BTU / SXC	1004		
J08	JACK - (3) 2X4 SPF STUD GRADE	BTU / SXC	1004		
J09	JACK - (2) 2X4 SPF STUD GRADE	ZUD / BTU / SXC	1035		
J10	JACK - (2) 2X4 SPF STUD GRADE	ZUD / BTU / SXC	1035		
J14	JACK - (3) 2X4 SPF STUD GRADE	ZUD / BTU / SXC	1029 / 1050		
J45	JACK - (3) 2X4 SPF STUD GRADE	ZFC / ZMR / SXC / BTU	1025		
J50	JACK - (5) 2X4 SP#1	MAA / SXC	1051		STEEL PLATE
J51	JACK - (5) 2X4 SP#1	MAA / SXC	1051		STEEL PLATE
J62	JACK - (3) 2X4 SPF STUD GRADE	BTU	1050		
J65	JACK - (4) 2X6 SPF STUD GRADE	GCF / BTU / SXC	1008		
J66	JACK - (2) 2X6 SPF STUD GRADE	GCF / BTU / SXC	1050		
J67	JACK - (2) 2X6 SPF STUD GRADE	GCF / BTU / SXC	1050		
J68	JACK - (4) 2X6 SPF STUD GRADE	GCF / BTU / SXC	1008		
J63	JACK - (2) 2X4 SPF STUD GRADE	GCF	1064		
J64	JACK - (2) 2X4 SPF STUD GRADE	GCF	1064		

LEGEND	
	BEARING WALL
	NON BEARING WALL
	INDICATES BEARING FROM POINT-LOAD ABOVE
	JACKS
	BEAM/HEADER
	PAD FOOTING
	STEEL COLUMN
	PORTAL FRAME
	JOIST/TRUSS
	LVL
	ENGINEERING PAGE NUMBER

SEE FC DETAILS FOR FRAMING CONNECTORS

LVL PLY TO PLY FASTENING SCHEDULE:

1.A - (2) PLY UP TO AND INCLUDING 11 7/8" TALL; FASTEN PLYS W/ (2) ROWS 16D NAILS AT 12" O.C.
 2.A - (2) PLY 14" TO AND 18" TALL (INCLUSIVE); FASTEN PLYS W/ (3) ROWS 16D NAILS AT 12" O.C.
 3.A - (2) PLY 20" TALL AND OVER; FASTEN PLYS W/ (4) ROWS 16D NAILS AT 12" O.C.
 4.A - (3) PLY UP TO AND INCLUDING 11 7/8" TALL; FASTEN PLYS W/ (2) ROWS 16D NAILS AT 12" O.C. FROM EACH SIDE
 5.A - (3) PLY 14" TO AND 18" TALL (INCLUSIVE); FASTEN PLYS W/ (3) ROWS 16D NAILS AT 12" O.C. FROM EACH SIDE
 6.A - (3) PLY 20" TALL AND OVER; FASTEN PLYS W/ (4) ROWS 16D NAILS AT 12" O.C. FROM EACH SIDE

FIELD INSTALLED FIRST FLOOR BEAM/HEADER SCHEDULE

IDENTIFIER	DESCRIPTION	LENGTH	OPTIONS	ENG. NUM.	REMARKS
PFO6-3	LVL - 1B	19'-4"	GCF / BTU / SXC	1008	3 PLY, 5A
PFO6-2	EXT HEADER - 2X12 - 2 PLY	11'-4"	GCF	1064	

FLOOR PLAN NOTES

- ALL HEADERS ARE (2) 2x6 W/ 2x4 WALLS OR (3) 2x6 W/ 2x6 WALLS, UNLESS OTHERWISE NOTED.
- ALL HEADERS TO HAVE (1) 2x4 OR 2x6 JACK EACH END, UNLESS OTHERWISE NOTED.
- ALL EXTERIOR WALLS TO BE 4" AND ALL INTERIOR WALLS TO BE 3 1/2", UNLESS OTHERWISE NOTED.
- HATCHED AREAS INDICATE DROPPED CEILING. ALL DROPPED CEILING ARE 12" UNLESS OTHERWISE NOTED.
- SEE "BRACED WALL PANEL DETAIL SHEET" FOR SPECIAL WALL FRAMING LOCATIONS AND HEADER SIZES, IF APPLICABLE.
- SEE STANDARD DETAIL CATEGORY "IT" SHEET(S) FOR INTERIOR TRIM DETAILS.
- SEE ARCHITECTURAL DETAIL SHEET "AD" FOR HOUSE SPECIFIC INTERIOR TRIM OPTION TABLE.
- ALL WINDOWS HAVE T-0 1/2" HEADER HEIGHT UNLESS OTHERWISE NOTED.

GYPSUM NOTES

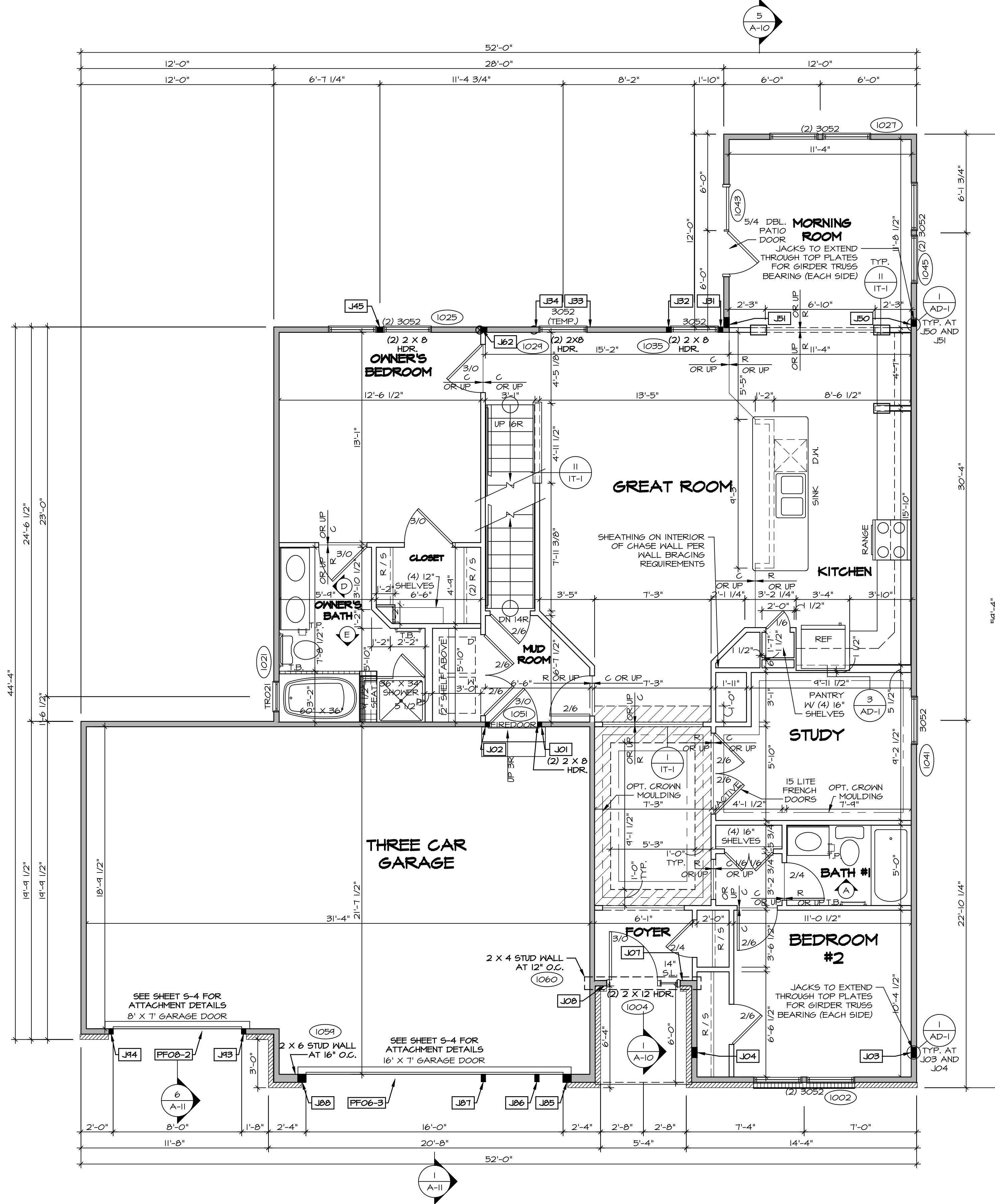
AT GARAGE:
 GYPSUM BOARD AT COMMON WALLS, CEILING, BEAM WRAPS AND SUPPORTS PER STANDARD DETAIL FA-1(b) FIRE ASSEMBLIES OR AS REQUIRED BY LOCAL CODE.

AT STAIRS:
 1/2" GYPSUM BOARD AT UNDERSIDE OF STAIRS AND WALLS IN CLOSET

BASEMENT WITH I-JOIST FLOOR SYSTEM ABOVE:
 WITH OPTION "SG1" - DRYWALL UNFINISHED BASEMENT CEILING AREA

NOTES:

- 1/2" GYPSUM WALL BOARD REQUIRED ON CEILING IN UNFINISHED AREAS WHEN NO SPRINKLER SYSTEM IS INSTALLED
- A MAXIMUM AREA OF 80 SQ FT MAY BE OMITTED AS NEEDED FOR INSTALLATION OF PLUMBING, ELECTRICAL, AND/OR HVAC (TYPICALLY AN 8'-0"x8'-0" CEILING SPACE ABOVE MECHANICAL AREA).
- PROVIDE FIRE BLOCKING AS REQUIRED AT PERIMETER OF ANY AREAS WHERE DRYWALL HAS BEEN OMITTED.



FIRST FLOOR PLAN
 SCALE: 1/4" = 1'-0"

REVISIONS:

REV. NO.	DATE	DESCRIPTION
1	08/07/16	TH - DRAWING ALIGNMENT

© NVR, Inc. NVR, Inc. expressly reserves the right to modify these plans without notice. These plans are not to be reproduced, changed or altered in any way without the written consent of NVR, Inc.

NVR
 NVR, Inc. Suite 100
 5285 Washington Blvd
 Frederick, MD 21703

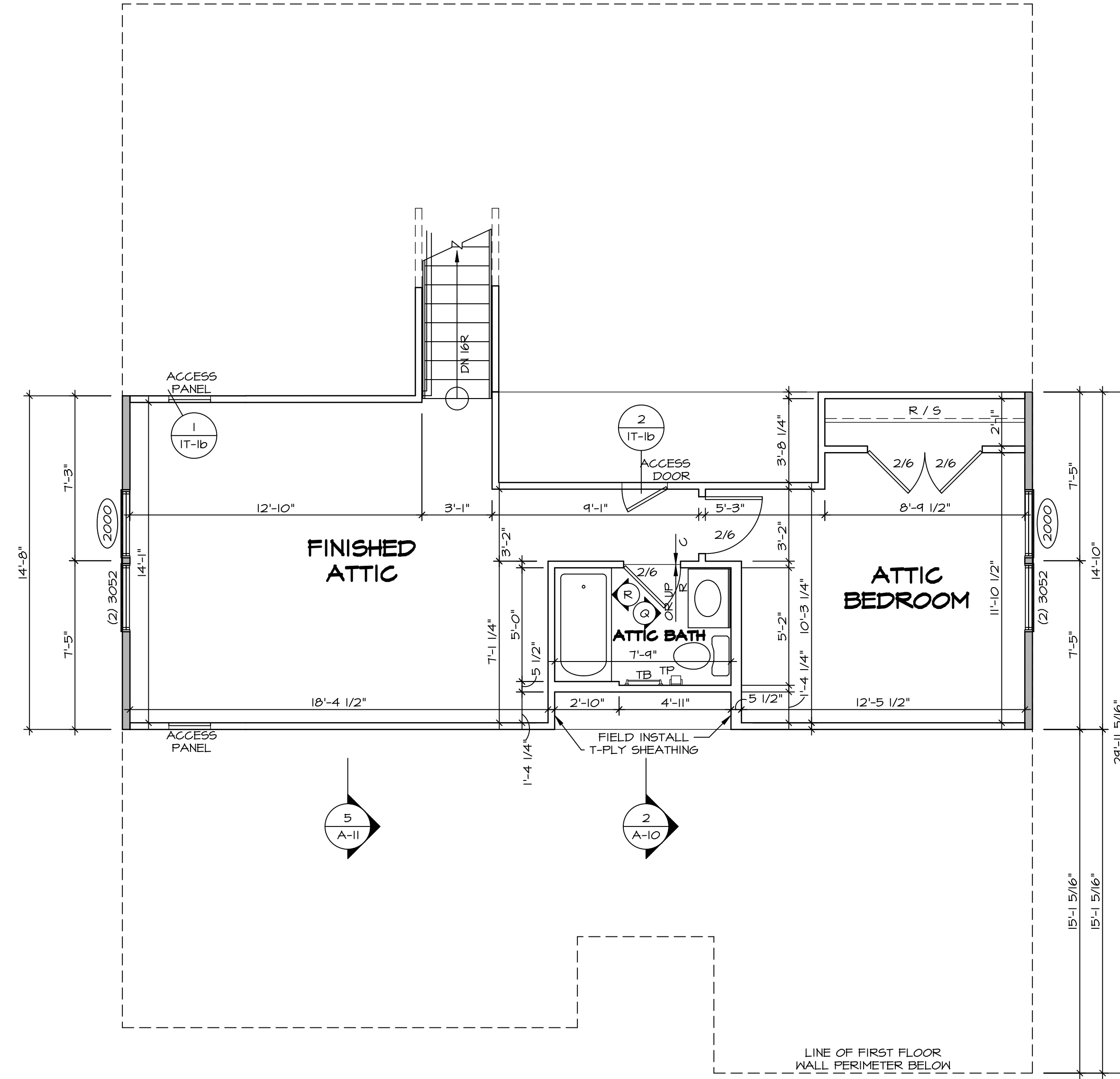
SET NO. P5TCO
 VERSION 02
 DRAWN BY
 DATE:
 OPTION

PISA TORRE
 DRAWING TITLE
 FIRST FLOOR PLAN

OPTION DESCRIPTION
 CORNERSTONE SPECIFICATIONS

SHEET NO. **A-7** OF 36

C:\NVR\Solves\PISA_TORRE_P5TCO_02\DC1-TE-004\1482355X\Sheet\1-6-A-7_Plan1_SXC_LS.dwg 11/07/19 - 3:04 am



1
A-9
SECOND FLOOR PLAN
SCALE: 1/4" = 1'-0"

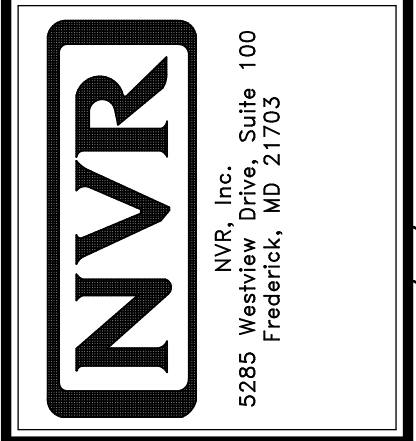
LEGEND	
	BEARING WALL
	NON BEARING WALL
	INDICATES BEARING FROM POINT-LOAD ABOVE
	JACKS
	BEAM/HEADER
	PAD FOOTING
	STEEL COLUMN
	PORTAL FRAME
	JOIST/TRUSS
	LVL
	ENGINEERING PAGE NUMBER

SEE FC DETAILS FOR FRAMING CONNECTORS

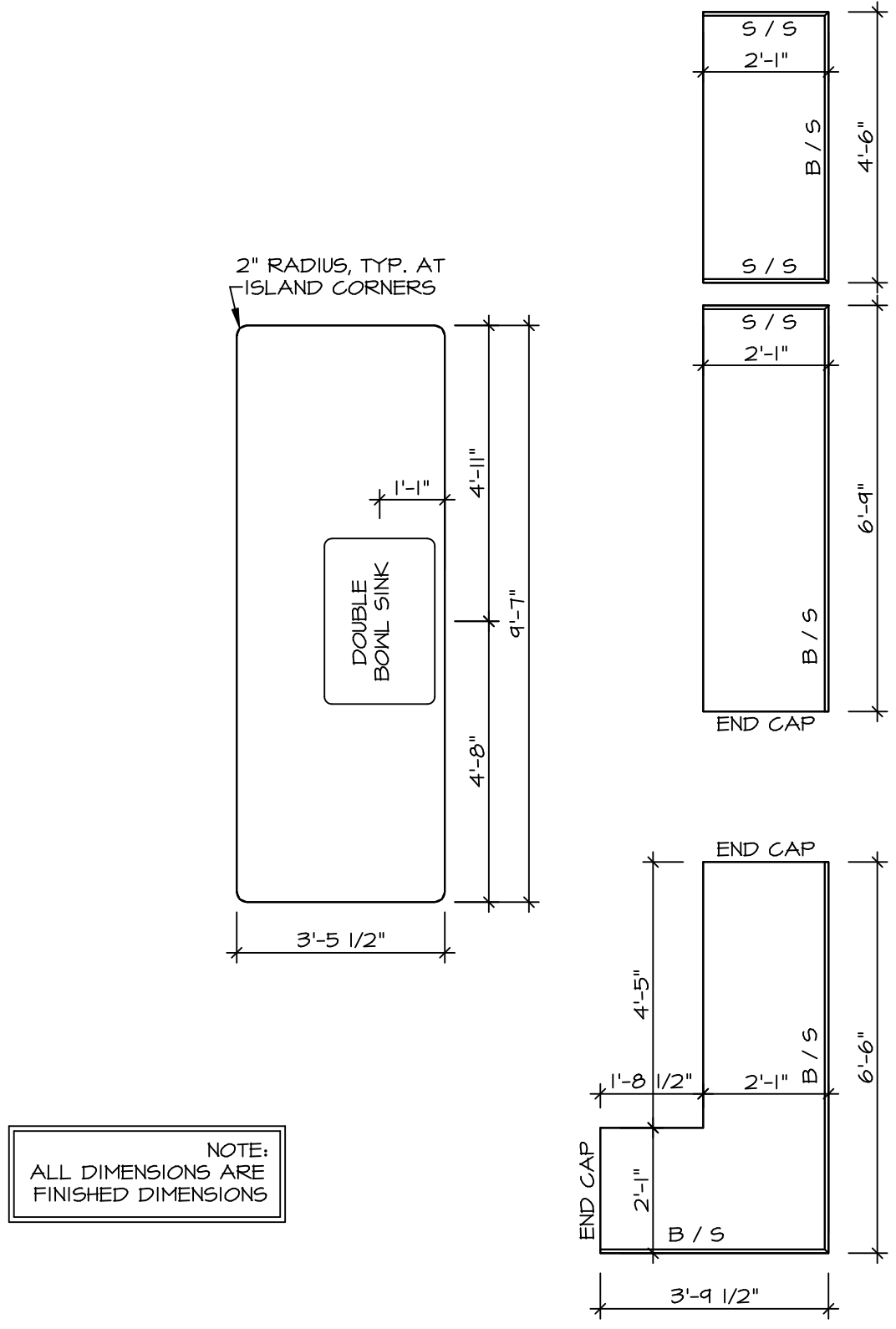
- FLOOR PLAN NOTES**
- ALL HEADERS ARE (2) 2x6 w/ 2x4 WALLS OR (3) 2x6 w/ 2x6 WALLS, UNLESS OTHERWISE NOTED.
 - ALL HEADERS TO HAVE (1) 2x4 OR 2x6 JACK EACH END, UNLESS OTHERWISE NOTED.
 - ALL EXTERIOR WALLS TO BE 4" AND ALL INTERIOR WALLS TO BE 3 1/2", UNLESS OTHERWISE NOTED.
 - HATCHED AREAS INDICATE DROPPED CEILINGS. ALL DROPPED CEILINGS ARE 12" UNLESS OTHERWISE NOTED. SEE BRACED WALL PANEL DETAIL SHEET FOR SPECIAL WALL FRAMING LOCATIONS AND HEADER SIZES, IF APPLICABLE.
 - SEE STANDARD DETAIL CATEGORY "IT" SHEET(S) FOR INTERIOR TRIM DETAILS.
 - SEE ARCHITECTURAL DETAIL SHEET "AD" FOR HOUSE SPECIFIC INTERIOR TRIM OPTION TABLE.
 - ALL WINDOWS HAVE 7'-0 1/2" HEADER HEIGHT UNLESS OTHERWISE NOTED.

REV. NO.	DATE	REMARKS
1	08/07/16	TH - DRAWING ALIGNMENT

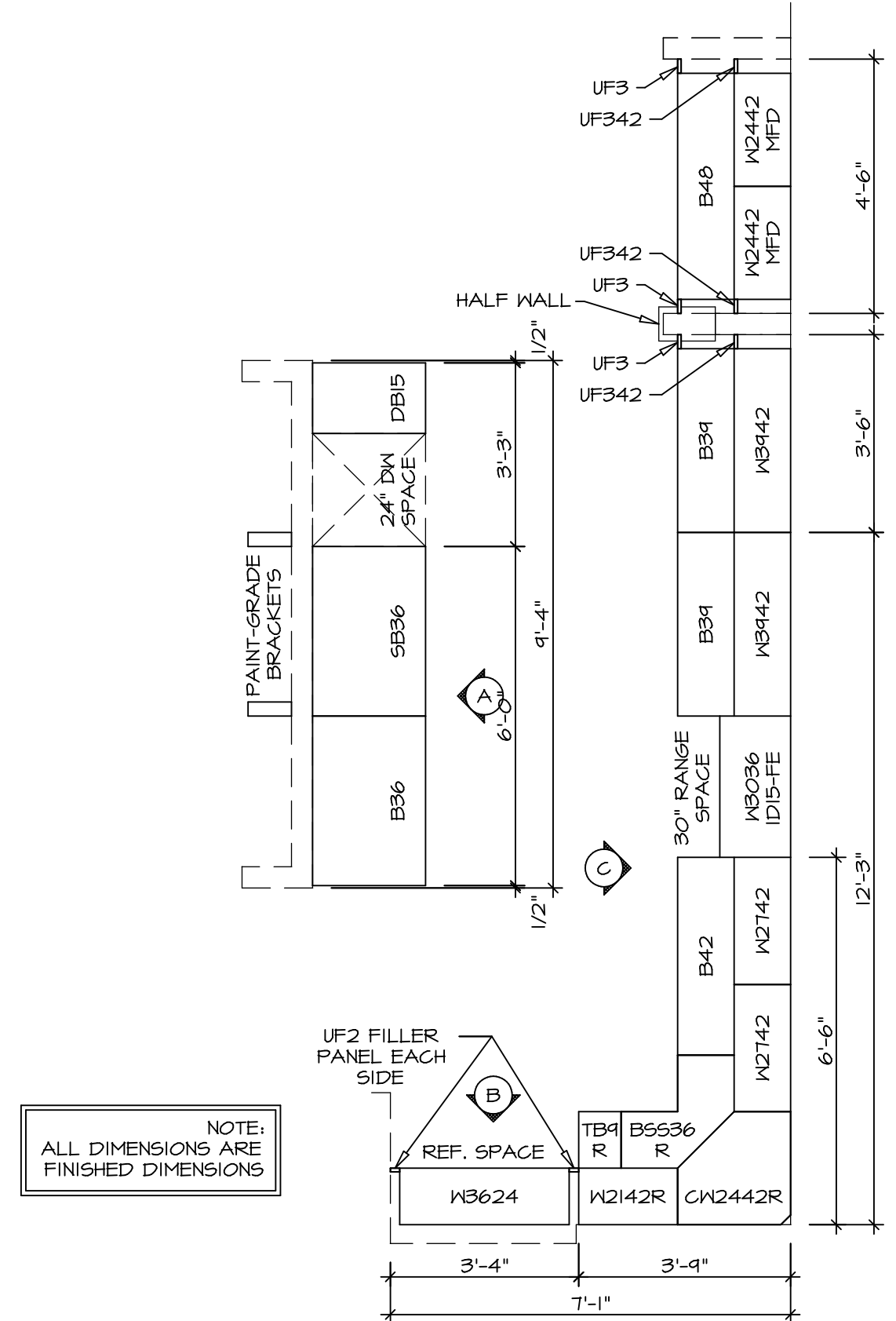
© NVR, Inc. expressly reserves the right to modify or amend these plans without notice. These plans are not to be reproduced, changed or altered in any way without the written consent of NVR, Inc.



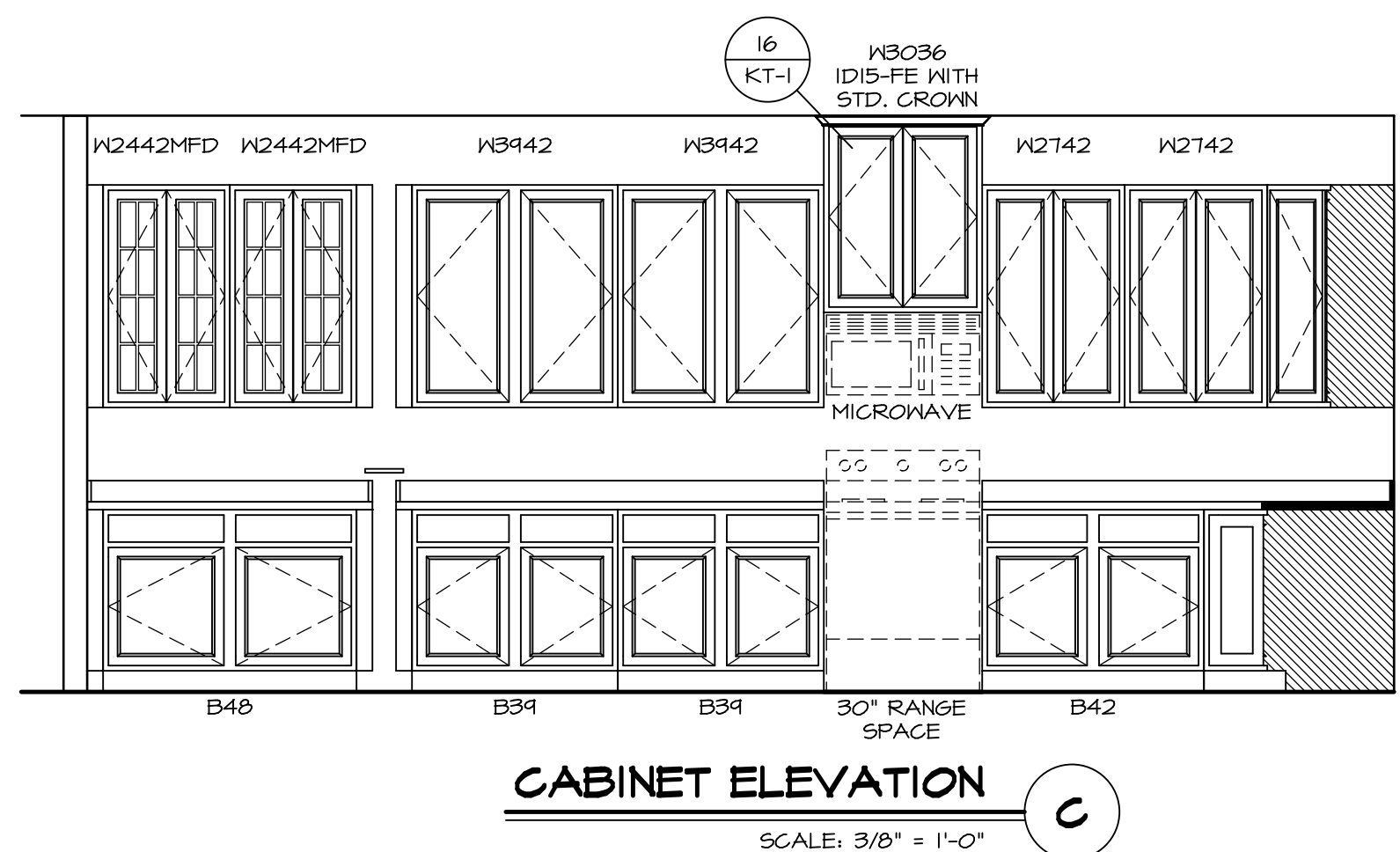
SHEET NO. A-9	MODEL PISA TORRE	SET NO. PSTCO
OPTION DESCRIPTION 4-4	DRAWING TITLE SECOND FLOOR PLAN	VERSION 02
	DATE:	DRAWN BY:
	OPTION	DATE:



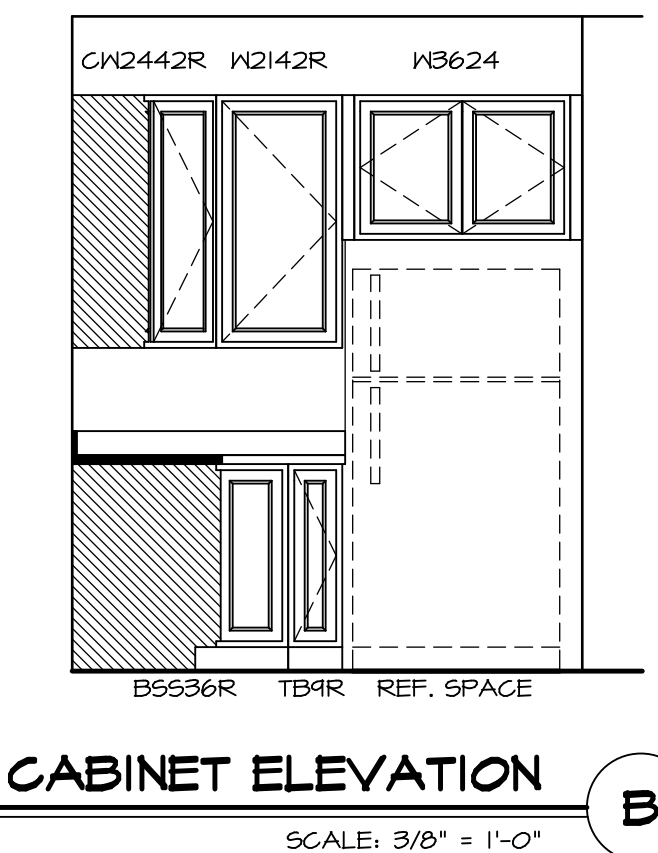
**(KT-3212)
COUNTERTOP LAYOUT**
SCALE: 3/8" = 1'-0" A-13



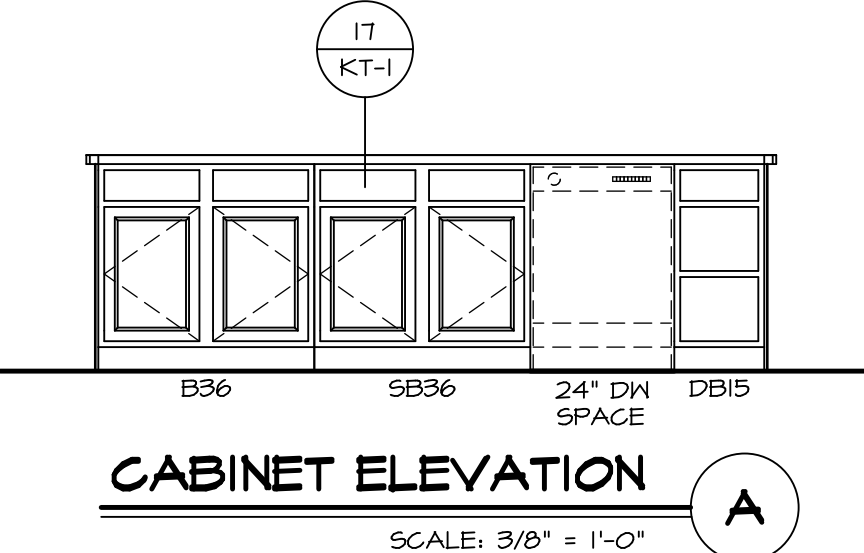
**(KC-3212)
CABINET LAYOUT**
SCALE: 3/8" = 1'-0" A-13



CABINET ELEVATION C
SCALE: 3/8" = 1'-0"

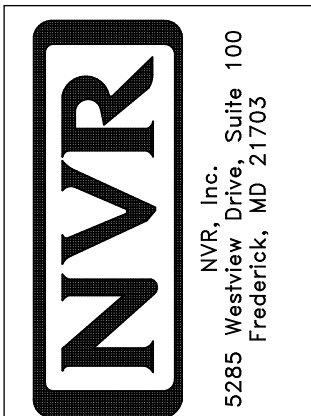


CABINET ELEVATION B
SCALE: 3/8" = 1'-0"

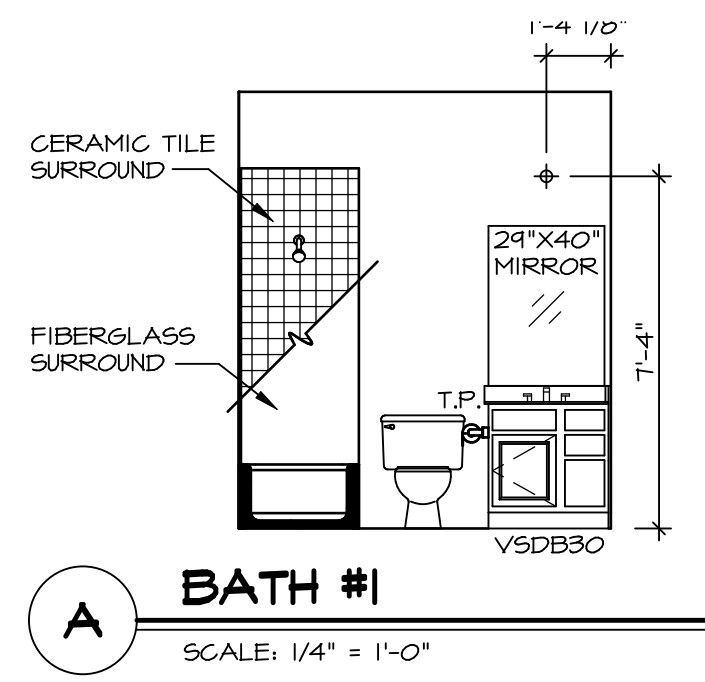


CABINET ELEVATION A
SCALE: 3/8" = 1'-0"

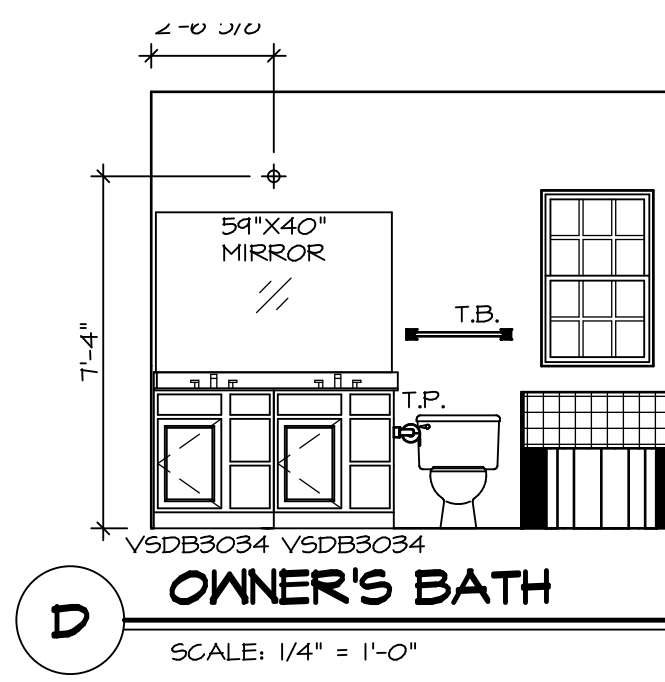
SHEET NO. A-13	MODEL PISA TORRE	SET NO. PST00	OPTION DESCRIPTION	REMARKS
	DRAWING TITLE KITCHENS	VERSION 02		
48				



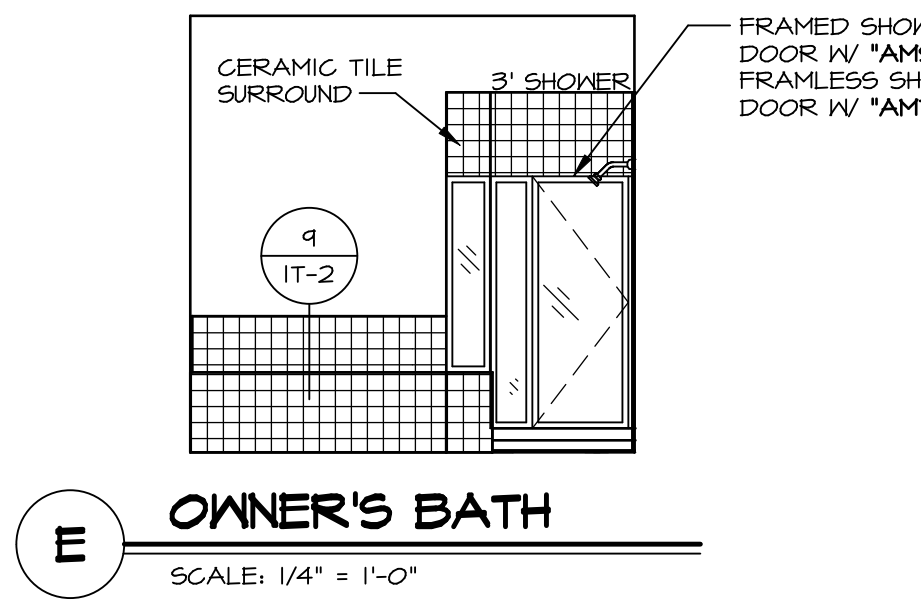
© NVR, Inc. expressly reserves the right to modify or change the information in these plans. These plans are not to be reproduced, changed or altered in any way without the written consent of NVR, Inc.



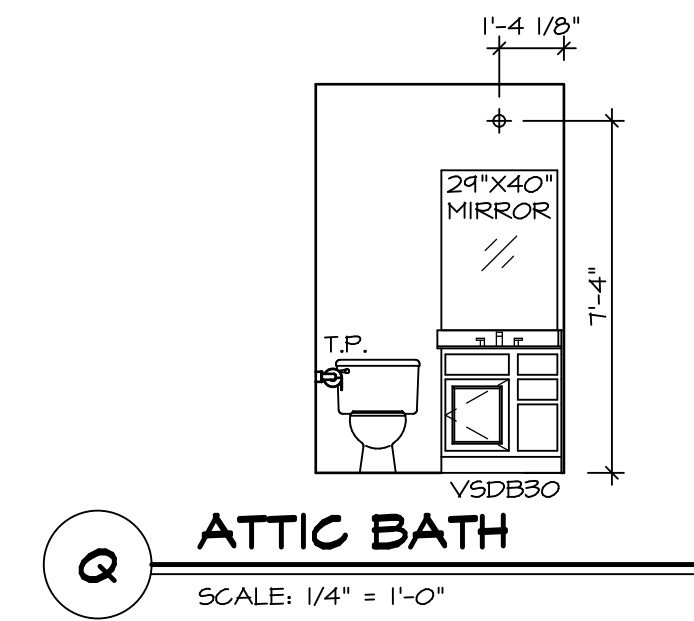
A BATH #1
SCALE: 1/4" = 1'-0"



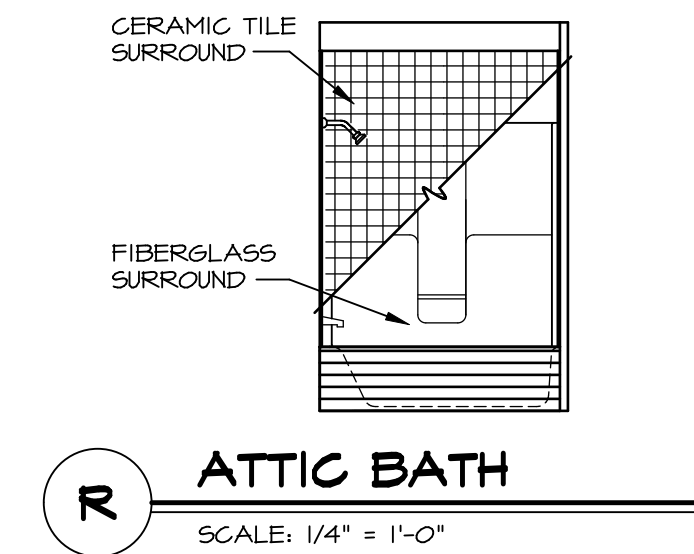
D OWNER'S BATH
SCALE: 1/4" = 1'-0"



E OWNER'S BATH
SCALE: 1/4" = 1'-0"



Q ATTIC BATH
SCALE: 1/4" = 1'-0"



R ATTIC BATH
SCALE: 1/4" = 1'-0"

NOTES:

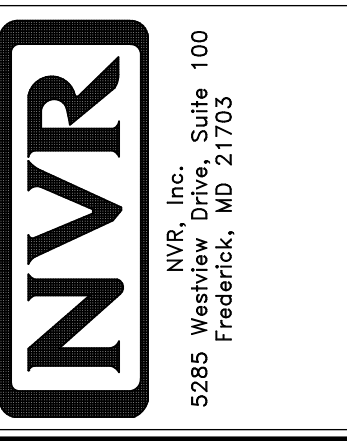
1. TEMPERED GLASS SHOWER ENCLOSURE WITH SWING DOOR OR OPTIONAL SLIDING DOOR BY DIVISION
2. TUB ACCESS PANELS PROVIDED AS NEEDED, ALL MATERIALS BY DIVISION
3. REFER TO SHEET IT-2 FOR TUB AND SHOWER DETAILS.
4. ALL VSD24-42 DRAWERS TO BE SET ON RIGHT HAND.
5. BATH ELEVATIONS ARE SHOWN PER PLAN.

NOTES
• WINDOWS VARY PER OPTION.

7'-6 5/8"

REV. NO.	DATE	REMARKS
1	08/07/16	TM - DRAWING ALIGNMENT

© NVR, Inc. NVR, Inc. expressly reserves the right to modify or change any of the information provided herein without notice. These plans are not to be reproduced, changed or altered in any way without the written consent of NVR, Inc.



MODEL	PISA TORRE
DRAWING TITLE	BATH ELEVATIONS
OPTION DESCRIPTION	
SHEET NO.	A-14
SET NO.	PSTCO
VERSION	02
DRAWN BY	
DATE:	
OPTION	