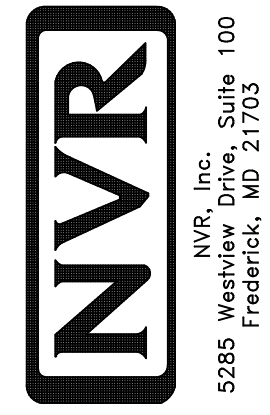


1
A-5
PLUMBING PLAN
SCALE: 1/4" = 1'-0"

SHEET NO. **A-5**
MODEL **PISA TORRE**
DRAWING TITLE **PLUMBING PLAN**
OPTION DESCRIPTION
31

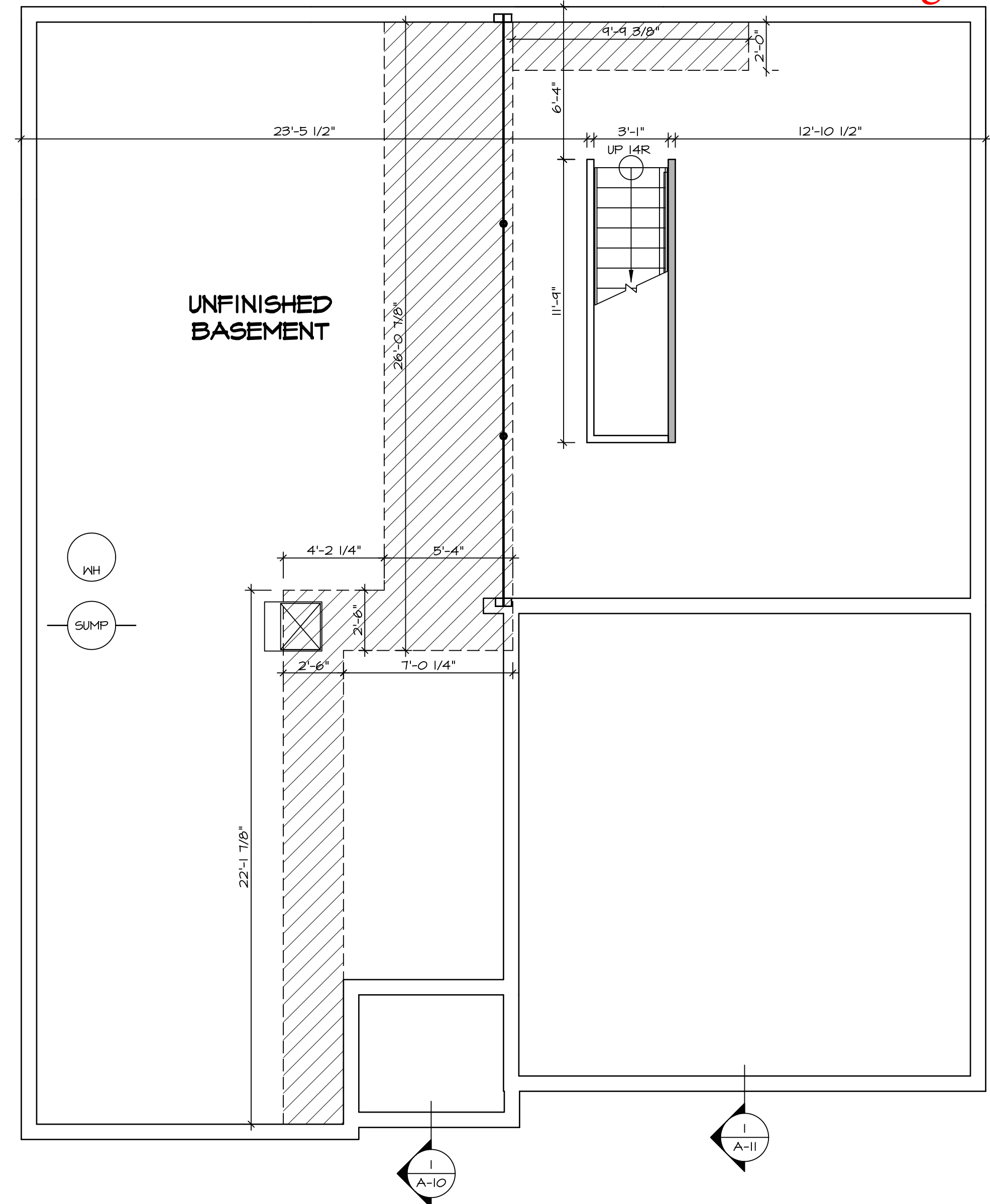


© NVR, Inc. expressly reserves the right to modify, alter, change, or amend these plans without notice. No reproduction, storage, or use of these plans is permitted without the written consent of NVR, Inc.

REV. NO. | DATE | REMARKS

REV. NO.	DATE	REMARKS

Well Tank
Back Right



LEGEND

	BEARING WALL
	NON BEARING WALL
	INDICATES BEARING FROM POINT-LOAD ABOVE
	JACKS
	BEAM/HEADER
	PAD FOOTING
	STEEL COLUMN
	PORTAL FRAME
	JOIST/TRUSS
	LVL
	ENGINEERING PAGE NUMBER

SEE FC DETAILS FOR FRAMING CONNECTORS

- FLOOR PLAN NOTES**
- ALL HEADERS ARE (2) 2x6 w/ 2x4 WALLS OR (3) 2x6 w/ 2x6 WALLS, UNLESS OTHERWISE NOTED.
 - ALL HEADERS TO HAVE (1) 2x4 OR 2x6 JACK EACH END, UNLESS OTHERWISE NOTED.
 - ALL EXTERIOR WALLS TO BE 4" AND ALL INTERIOR WALLS TO BE 3 1/2", UNLESS OTHERWISE NOTED.
 - HATCHED AREAS INDICATE DROPPED CEILINGS. ALL DROPPED CEILINGS ARE 12" UNLESS OTHERWISE NOTED.
 - SEE "BRACED WALL PANEL DETAIL SHEET" FOR SPECIAL WALL FRAMING LOCATIONS AND HEADER SIZES, IF APPLICABLE.
 - SEE STANDARD DETAIL CATEGORY "IT" SHEET(S) FOR INTERIOR TRIM DETAILS.
 - SEE ARCHITECTURAL DETAIL SHEET "AD" FOR HOUSE SPECIFIC INTERIOR TRIM OPTION TABLE.
 - ALL WINDOWS HAVE 7'-0 1/2" HEADER HEIGHT UNLESS OTHERWISE NOTED.

- GYPSUM NOTES**
- AT GARAGE:
GYPSUM BOARD AT COMMON WALLS, CEILING, BEAM WRAPS AND SUPPORTS PER STANDARD DETAIL FA-1(b) FIRE ASSEMBLIES OR AS REQUIRED BY LOCAL CODE.
- AT STAIRS:
1/2" GYPSUM BOARD AT UNDERSIDE OF STAIRS AND WALLS IN CLOSET
- BASEMENT WITH I-JOIST FLOOR SYSTEM ABOVE:
WITH OPTION "SC1" - DRYWALL UNFINISHED BASEMENT CEILING AREA
- NOTES:**
- 1/2" GYPSUM WALL BOARD REQUIRED ON CEILING IN UNFINISHED AREAS WHEN NO SPRINKLER SYSTEM IS INSTALLED.
 - A MAXIMUM AREA OF 80 SQ FT MAY BE OMITTED AS NEEDED FOR INSTALLATION OF PLUMBING, ELECTRICAL, AND/OR HVAC (TYPICALLY AN 8'-0"x8'-0" CEILING SPACE ABOVE MECHANICAL AREA).
 - PROVIDE FIRE BLOCKING AS REQUIRED AT PERIMETER OF ANY AREAS WHERE DRYWALL HAS BEEN OMITTED.

BASEMENT FLOOR PLAN
SCALE: 1/4" = 1'-0"

SHEET NO. A-6	MODEL PISA TORRE	SET NO. PS100	VERSION 02	DATE:	OPTION						
		DRAWING TITLE BASEMENT FLOOR PLAN	DRAWN BY	DATE:	OPTION						
OPTION DESCRIPTION											
34											
<p>© NVR, Inc. reserves the copyright in these plans. These plans are not to be reproduced, changed or altered in any way without the written consent of NVR, Inc.</p> <p>NVR NVR, Inc. Suite 100 Frederick, MD 21703 5285 Washburne Rd.</p>											
<p>REVISIONS</p> <table border="1"> <thead> <tr> <th>REV. NO.</th> <th>DATE</th> <th>DESCRIPTION</th> </tr> </thead> <tbody> <tr> <td>1</td> <td>08/07/16</td> <td>TH - DRAWING ALIGNMENT</td> </tr> </tbody> </table>						REV. NO.	DATE	DESCRIPTION	1	08/07/16	TH - DRAWING ALIGNMENT
REV. NO.	DATE	DESCRIPTION									
1	08/07/16	TH - DRAWING ALIGNMENT									
<p>REMARKS</p>											

FIRST FLOOR JACK SCHEDULE				
IDENTIFIER	DESCRIPTION	OPTIONS	ENG. NUM.	REMARKS
J01	JACK - (2) 2X4 SPF STUD GRADE		1051 / 1050	
J02	JACK - (2) 2X4 SPF STUD GRADE		1051 / 1050	
J03	JACK - (5) 2X4 SP#1	SXC	1051	STEEL PLATE
J04	JACK - (5) 2X4 SP#1	SXC	1051	STEEL PLATE
J05	JACK - (2) 2X4 SPF STUD GRADE	ZCC / SXC	1062	
J06	JACK - (2) 2X4 SPF STUD GRADE	ZCC / SXC	1062	
J15	JACK - (2) 2X4 SPF STUD GRADE	D6T / ZCC / SXC	1034	
J16	JACK - (2) 2X4 SPF STUD GRADE	D6T / ZCC / SXC	1034	
J67	JACK - (3) 2X4 SPF STUD GRADE	GCB / ZCC	1006	
J68	JACK - (3) 2X4 SPF STUD GRADE	GCB / ZCC	1006	

LEGEND	
	BEARING WALL
	NON BEARING WALL
	INDICATES BEARING FROM POINT-LOAD ABOVE
	JACKS
	BEAM/HEADER
	PAD FOOTING
	STEEL COLUMN
	PORTAL FRAME
	JOIST/TRUSS
	LVL
	ENGINEERING PAGE NUMBER

SEE FC DETAILS FOR FRAMING CONNECTORS

LVL PLY TO PLY FASTENING SCHEDULE:

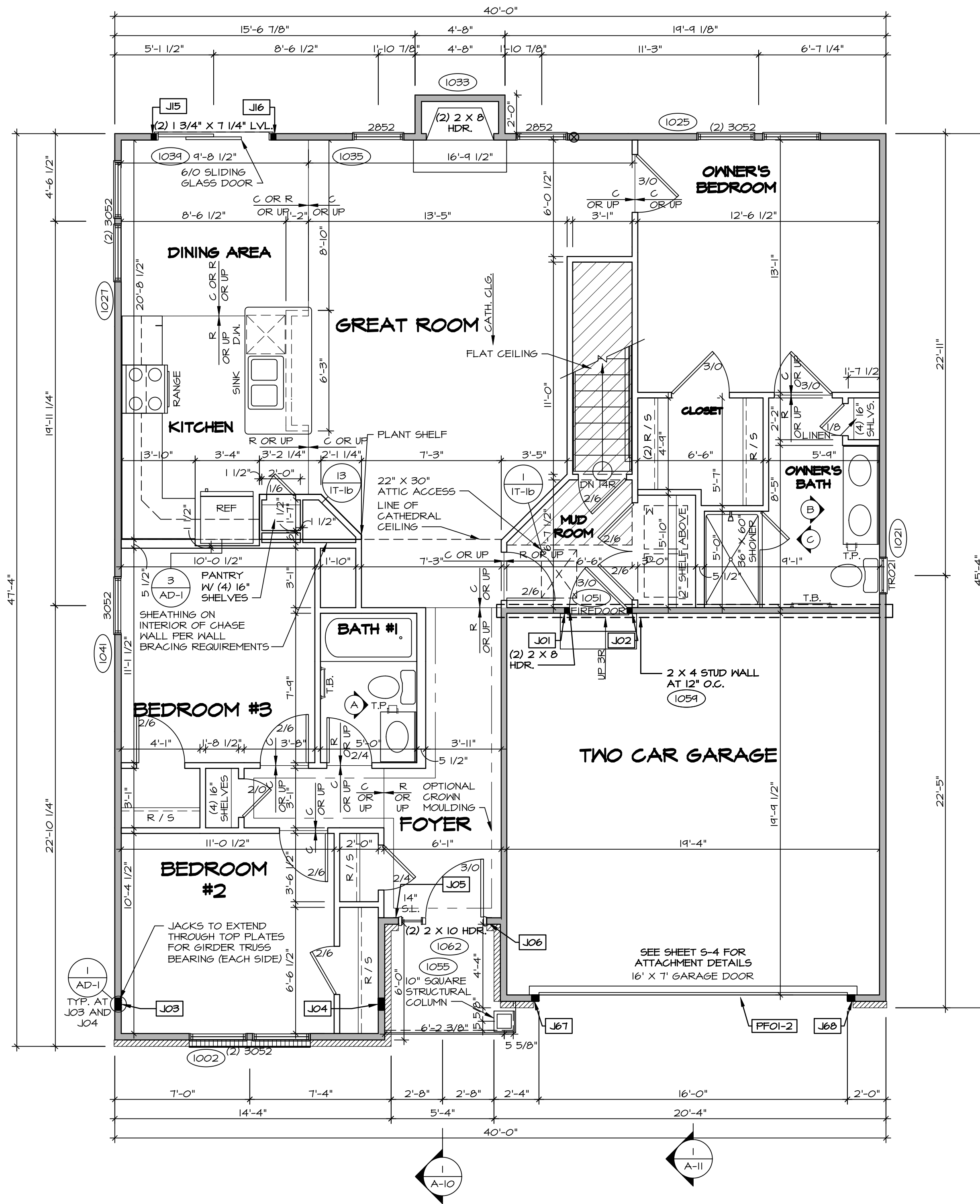
1.A - (2) FLY UP TO AND INCLUDING 11 7/8" TALL; FASTEN FLIES W/ (2) ROWS 16D NAILS AT 12" O.C.
 2.A - (2) FLY 14" TO AND 18" TALL (INCLUSIVE); FASTEN FLIES W/ (3) ROWS 16D NAILS AT 12" O.C.
 3.A - (2) FLY 20" TALL AND OVER; FASTEN FLIES W/ (4) ROWS 16D NAILS AT 12" O.C.
 4.A - (3) FLY UP TO AND INCLUDING 11 7/8" TALL; FASTEN FLIES W/ (2) ROWS 16D NAILS AT 12" O.C. FROM EACH SIDE
 5.A - (3) FLY 14" TO AND 18" TALL (INCLUSIVE); FASTEN FLIES W/ (3) ROWS 16D NAILS AT 12" O.C. FROM EACH SIDE
 6.A - (3) FLY 20" TALL AND OVER; FASTEN FLIES W/ (4) ROWS 16D NAILS AT 12" O.C. FROM EACH SIDE

FIELD INSTALLED FIRST FLOOR BEAM/HEADER SCHEDULE

IDENTIFIER	DESCRIPTION	LENGTH	OPTIONS	ENG. NUM.	REMARKS
PFOI-2	LVL - I4	19'-4"	GCB / ZCC	1006	2 PLY, 2A

- FLOOR PLAN NOTES**
- ALL HEADERS ARE (2) 2x6 w/ 2x4 WALLS OR (3) 2x6 w/ 2x6 WALLS, UNLESS OTHERWISE NOTED.
 - ALL HEADERS TO HAVE (1) 2x4 OR 2x6 JACK EACH END, UNLESS OTHERWISE NOTED.
 - ALL EXTERIOR WALLS TO BE 4" AND ALL INTERIOR WALLS TO BE 3 1/2", UNLESS OTHERWISE NOTED.
 - HATCHED AREAS INDICATE DROPPED CEILING. ALL DROPPED CEILING ARE 12" UNLESS OTHERWISE NOTED.
 - SEE "BRACED WALL PANEL DETAIL SHEET" FOR SPECIAL WALL FRAMING LOCATIONS AND HEADER SIZES, IF APPLICABLE.
 - SEE STANDARD DETAIL CATEGORY "IT" SHEET(S) FOR INTERIOR TRIM DETAILS.
 - SEE ARCHITECTURAL DETAIL SHEET "AD" FOR HOUSE SPECIFIC INTERIOR TRIM OPTION TABLE.
 - ALL WINDOWS HAVE T-O 1/2" HEADER HEIGHT UNLESS OTHERWISE NOTED.

- GYPSUM NOTES**
- AT GARAGE:**
 GYPSUM BOARD AT COMMON WALLS, CEILING, BEAM WRAPS AND SUPPORTS PER STANDARD DETAIL FA-1(b) FIRE ASSEMBLIES OR AS REQUIRED BY LOCAL CODE.
- AT STAIRS:**
 1/2" GYPSUM BOARD AT UNDERSIDE OF STAIRS AND WALLS IN CLOSET
- BASEMENT WITH 1-JOIST FLOOR SYSTEM ABOVE:**
 WITH OPTION "SG1" - DRYWALL UNFINISHED BASEMENT CEILING AREA
- NOTES:**
- 1/2" GYPSUM WALL BOARD REQUIRED ON CEILING IN UNFINISHED AREAS WHEN NO SPRINKLER SYSTEM IS INSTALLED
 - A MAXIMUM AREA OF 80 SQ FT MAY BE OMITTED AS NEEDED FOR INSTALLATION OF PLUMBING, ELECTRICAL, AND/OR HVAC (TYPICALLY AN 8'-0"x8'-0" CEILING SPACE ABOVE MECHANICAL AREA).
 - PROVIDE FIRE BLOCKING AS REQUIRED AT PERIMETER OF ANY AREAS WHERE DRYWALL HAS BEEN OMITTED.



FIRST FLOOR PLAN
 SCALE: 1/4" = 1'-0"

REVISIONS

REV. NO.	DATE	DESCRIPTION
1	08/01/16	TH - DRAWING ALIGNMENT

© NVR, Inc. The user hereby reserves the right to modify or change these plans without notice. These plans are not to be reproduced, changed or altered in any way without the written consent of NVR, Inc.

NVR
 NVR, Inc. Suite 100
 5285 Washington Blvd.
 Frederick, MD 21703

SET NO. P5TCO
 VERSION 02
 DRAWN BY
 DATE:
 OPTION

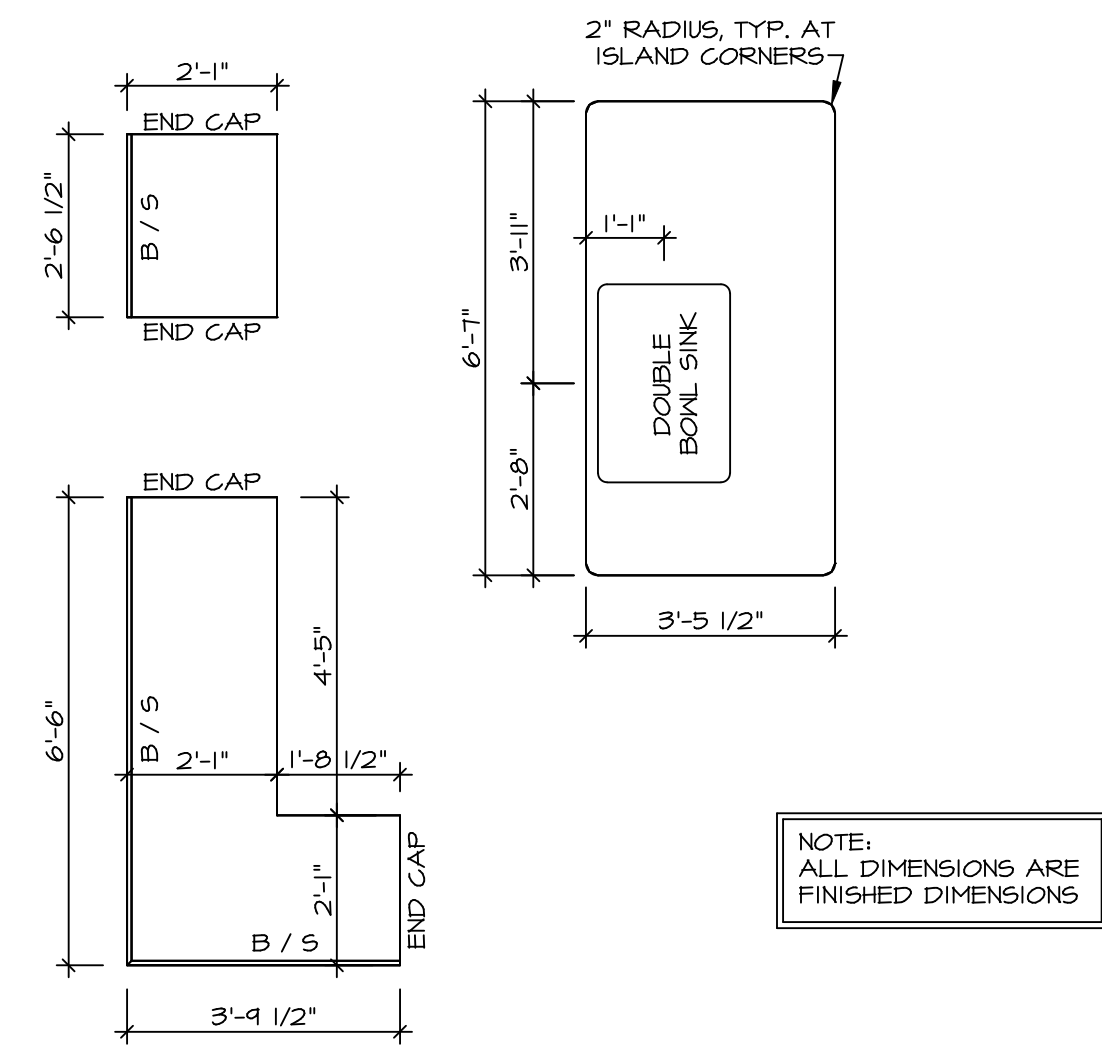
PISA TORRE
 DRAWING TITLE
 FIRST FLOOR PLAN

OPTION DESCRIPTION
 CORNERSTONE SPECIFICATIONS

SHEET NO. **A-7**

36

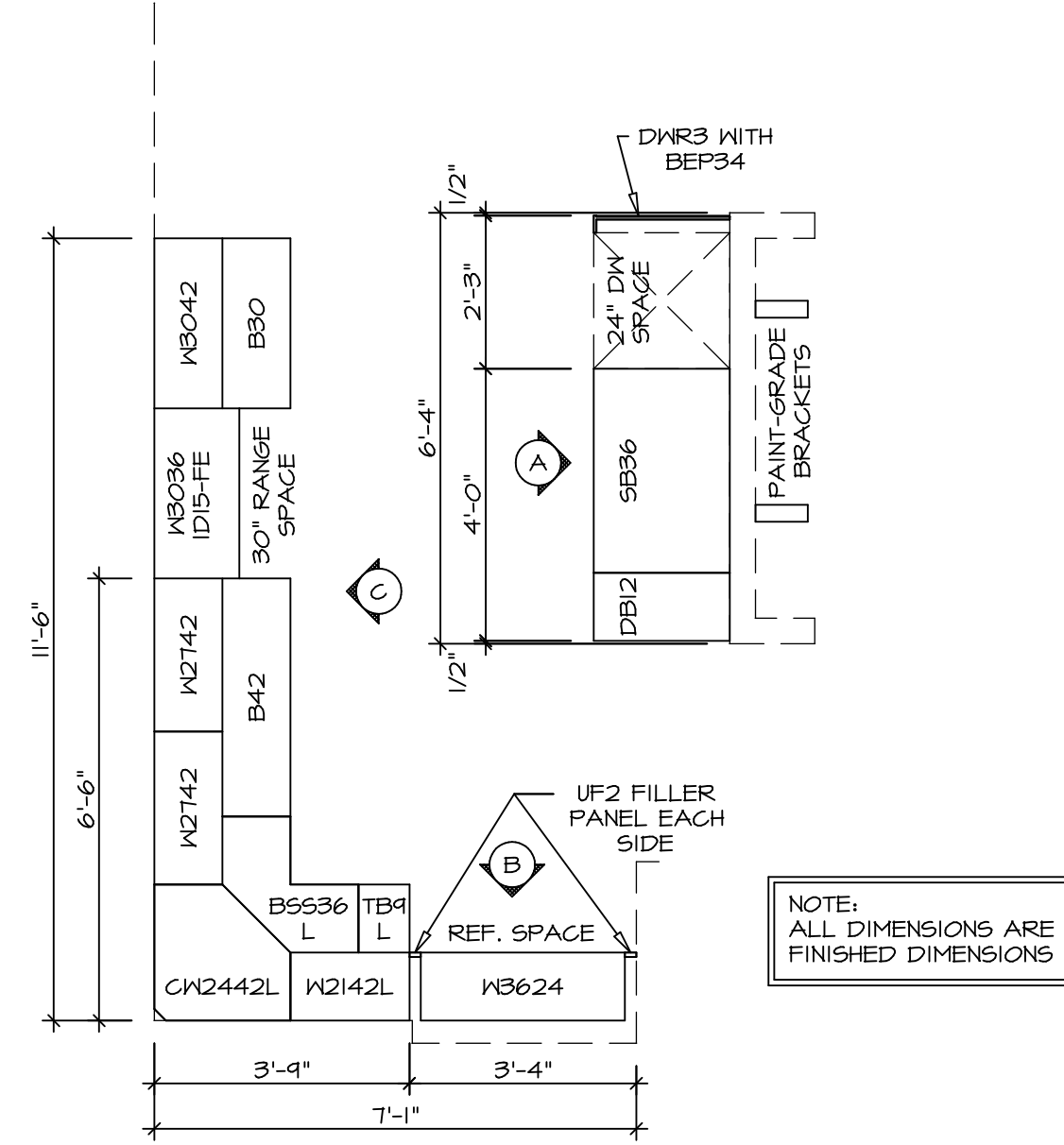
C:\NVR\Solves\PISA_TORRE_P5TCO_02\DCI-TE-005\1402119\Sheet\1st_Specific\36_A-7_PLN1_SXC_US.dwg 09/29/19 - 2:38 pm



NOTE: ALL DIMENSIONS ARE FINISHED DIMENSIONS

(KT-3209)
COUNTERTOP LAYOUT

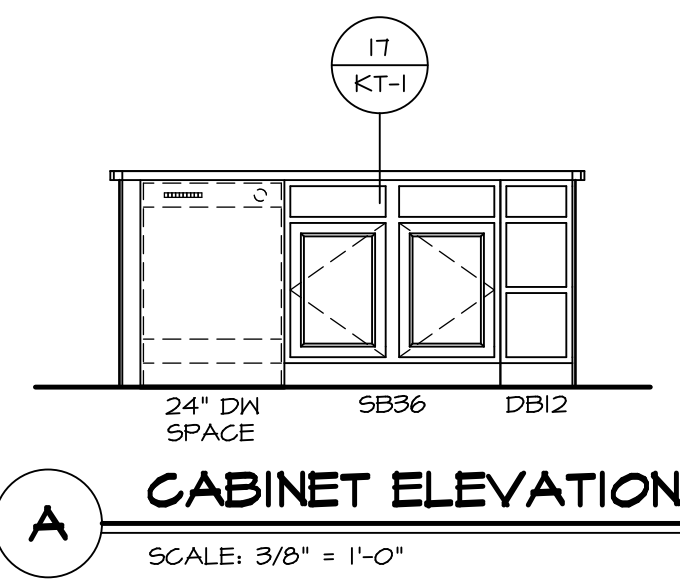
2
A-B SCALE: 3/8" = 1'-0"



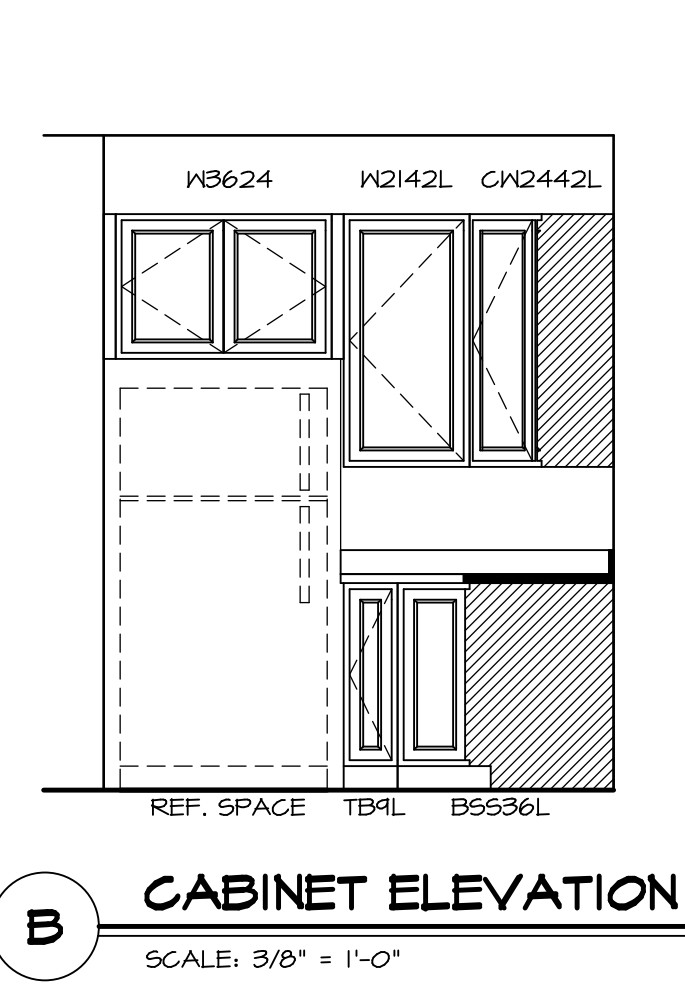
NOTE: ALL DIMENSIONS ARE FINISHED DIMENSIONS

(KC-3209)
CABINET LAYOUT

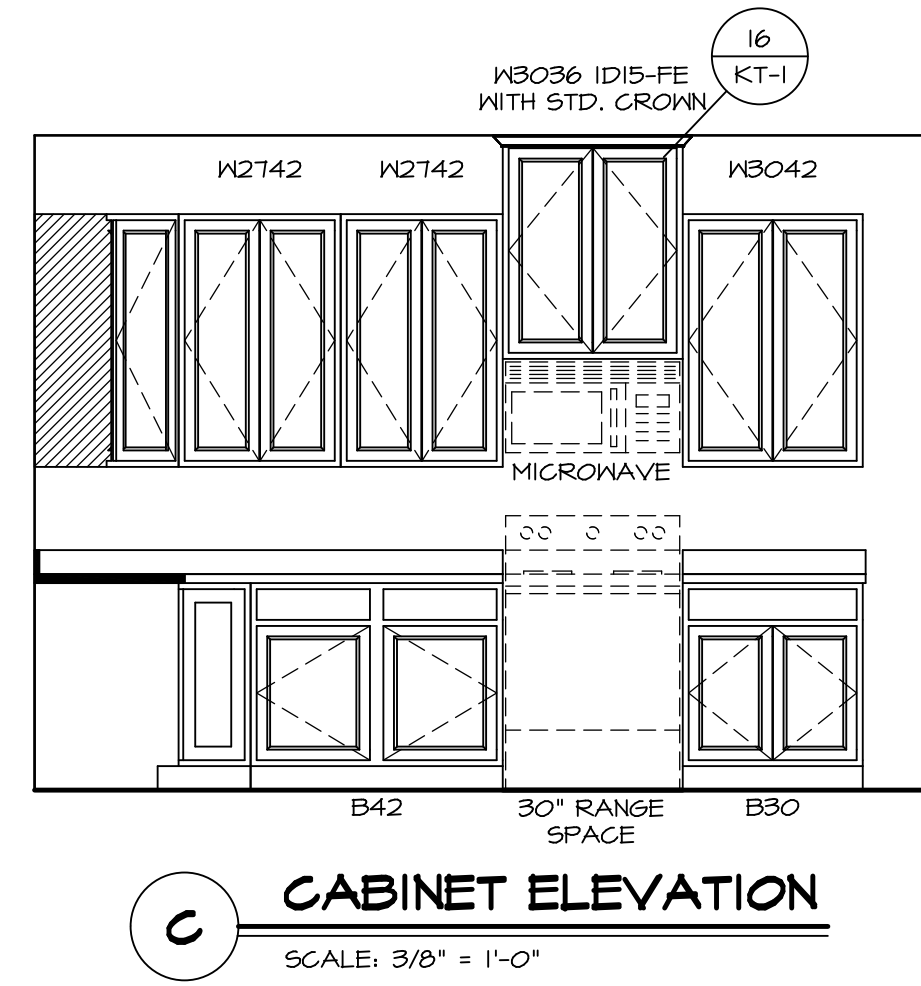
1
A-B SCALE: 3/8" = 1'-0"



A **CABINET ELEVATION**
SCALE: 3/8" = 1'-0"

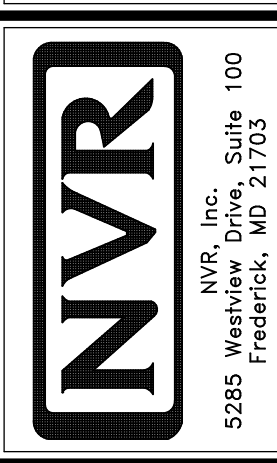


B **CABINET ELEVATION**
SCALE: 3/8" = 1'-0"



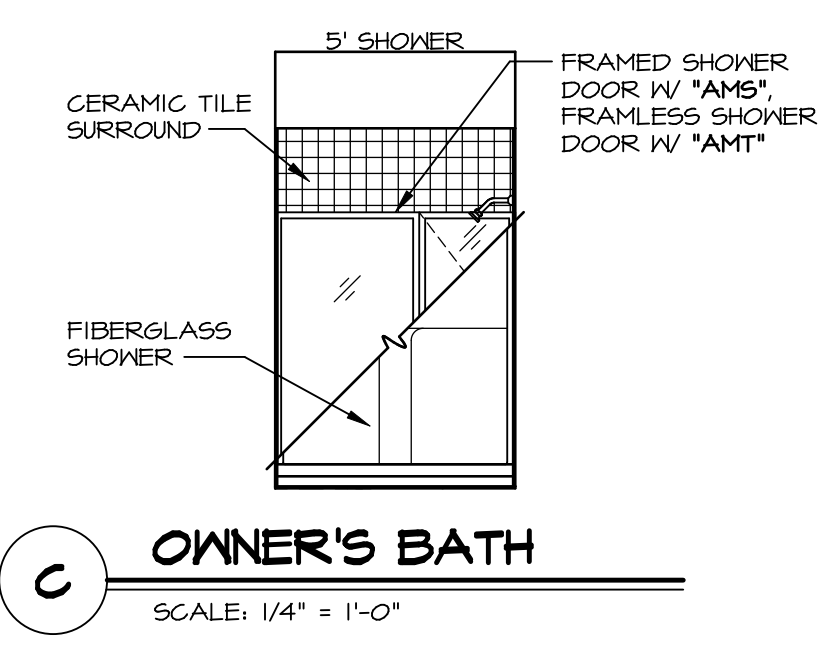
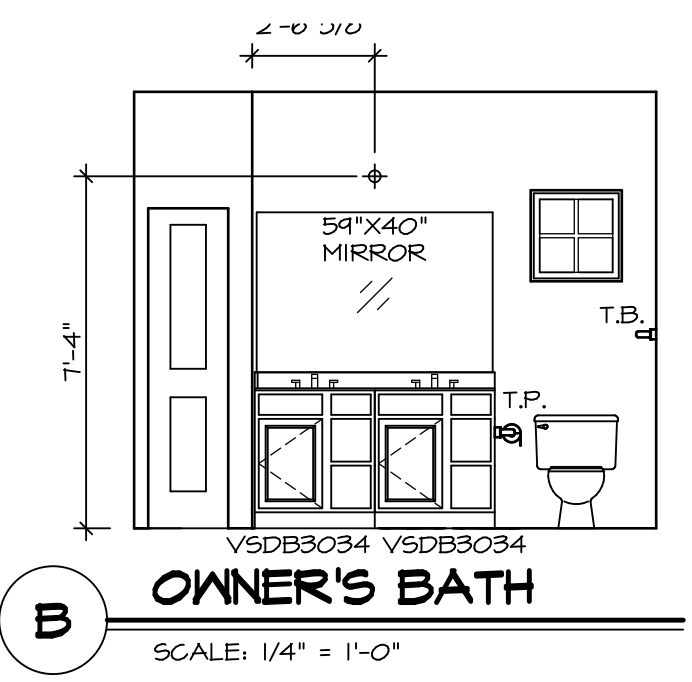
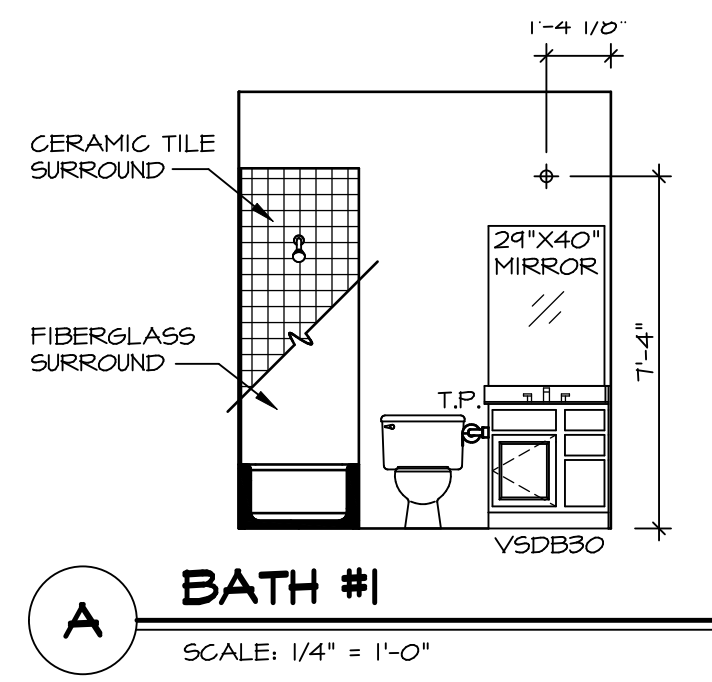
C **CABINET ELEVATION**
SCALE: 3/8" = 1'-0"

SHEET NO.	MODEL	SET NO.	VERSION
A-13	PISA TORRE KITCHENS	PS100	02
OPTION	DRAWN BY	DATE	OPTION
48	BDH	3/24/15	



© NVR, Inc. expressly reserves the right to modify these plans without notice. No part of these plans may be reproduced, stored in a retrieval system, or transmitted in any form or by any means, electronic, mechanical, photocopying, recording, or by any information storage and retrieval system, without the prior written permission of NVR, Inc.

REV. NO.	DATE	REMARKS



NOTES:

1. TEMPERED GLASS SHOWER ENCLOSURE WITH SWING DOOR OR OPTIONAL SLIDING DOOR BY DIVISION
2. TUB ACCESS PANELS PROVIDED AS NEEDED, ALL MATERIALS BY DIVISION
3. REFER TO SHEET IT-2 FOR TUB AND SHOWER DETAILS.
4. ALL V5DB24-42 DRAWERS TO BE SET ON RIGHT HAND.
5. BATH ELEVATIONS ARE SHOWN PER PLAN.

NOTES
 • WINDOWS VARY PER OPTION.

SHEET NO. A-14	MODEL PISA TORRE	SET NO. P5TC00
DRAWING TITLE BATH ELEVATIONS	VERSION 02	DRAWN BY
OPTION DESCRIPTION	DATE:	OPTION
53		

NVR
 NVR, Inc. Suite 100
 5285 Westgate
 Frederick, MD 21703

© NVR, Inc. expressly reserves the right to modify or discontinue, without notice, any or all of the products and services shown in these plans. These plans are not to be reproduced, changed or altered in any way without the express written consent of NVR, Inc.

REV. NO.	DATE	REMARKS
1	08/07/16	TM - DRAINING ALIGNMENT