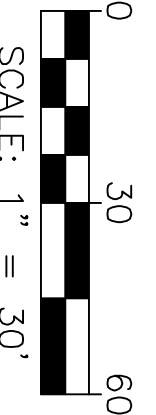
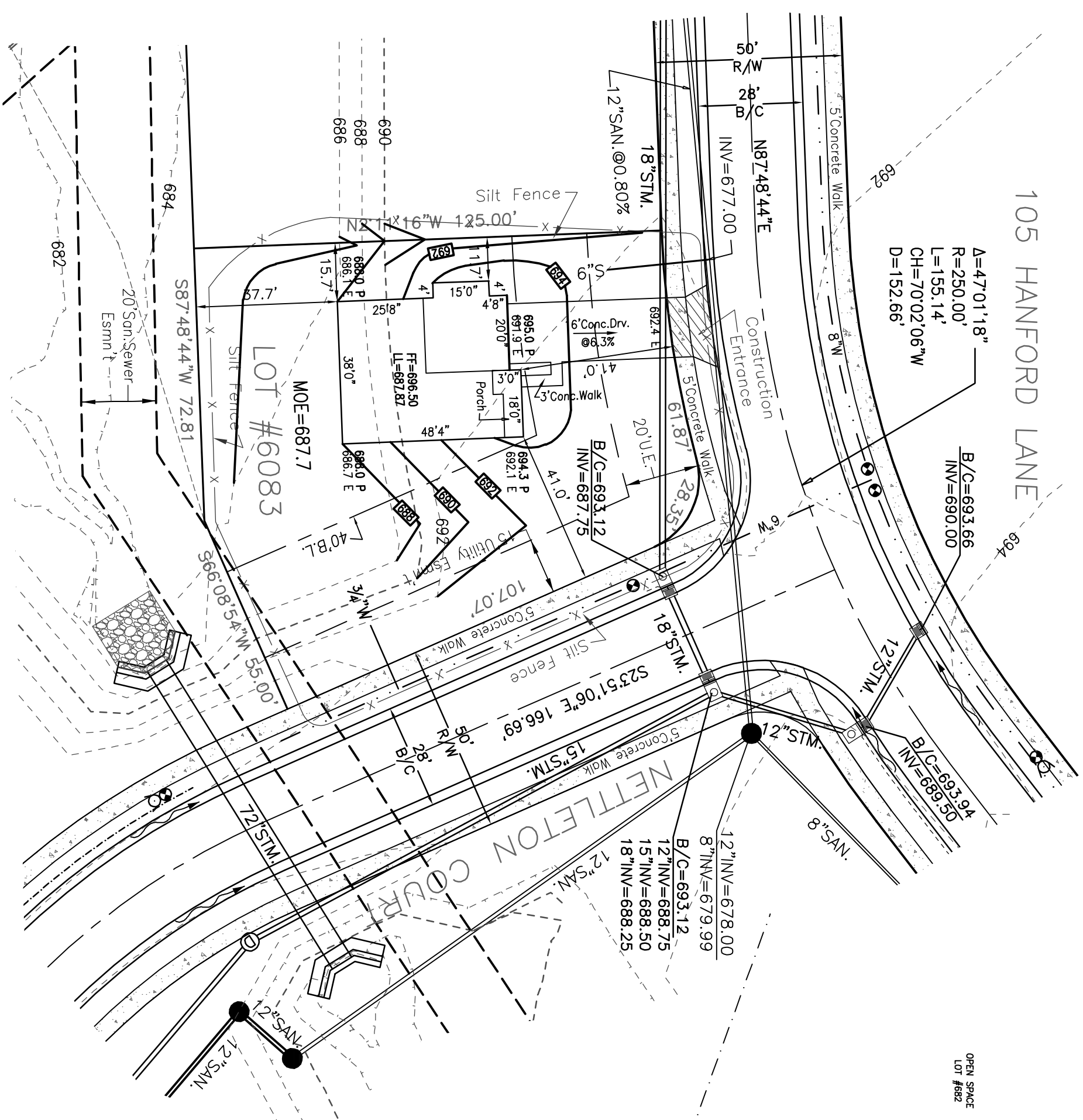
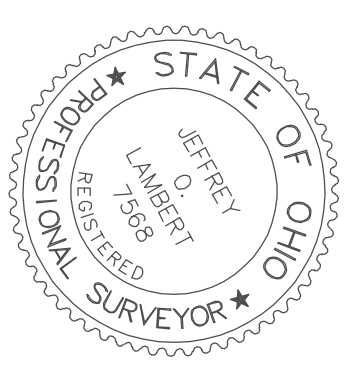
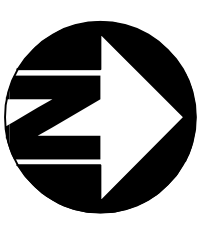
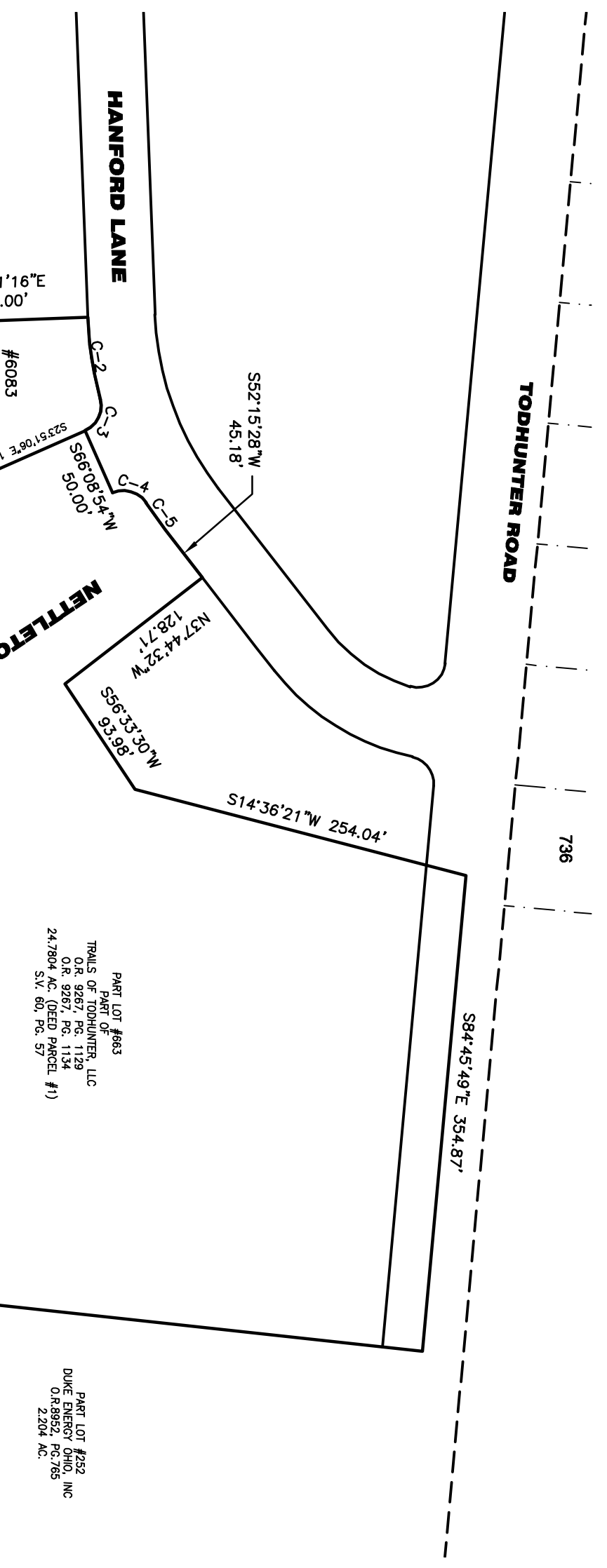


UNDERGROUND UTILITIES
2 WORKING DAYS
BEFORE YOU DIG
Call 1-800-752-6004
KENTUCKY UTILITY
PROTECTION SERVICE
NON MEMBERS
MUST BE CALLED DIRECTLY

CURVE TABLE			
Curve	Delta	Radius	Length Chord
C-8	20°11'54"	175.00'	61.69'
C-9	28°45'28"	175.00'	87.83'
C-1	6°28'55"	225.00'	25.45'
C-2	12°53'23"	275.00'	61.87'
C-3	81°13'33"	20.00'	28.35'
C-4	81°13'33"	20.00'	28.35'
C-5	5°08'58"	275.00'	24.56'



Verify San. Sewer Depth prior to Excavation



NOTE:
1) This drawing was prepared for house permitting and staking only. It does not warrant any environmental or geo-technical conditions, and it does not represent a boundary or "As-Built" survey.
2) Buyer-Becker assumes no responsibility for either the depth or location of the sewer lateral.
3) Typical five (5) foot Private Drainage Easement provided on both sides of every lot line, inside the platted area, not presently labeled with an easement.

Note:
Min. Setbacks
Front=40'
Side=10'
Rear=25'

PART LOT #683
TRAILS OF TODDHUNTER, LLC
O.R. 9287, P.C. 1129
38.7743 S.W. 80, P.C. 57

PART LOT #683
TRAILS OF TODDHUNTER, LLC
O.R. 9287, P.C. 1134
24.7804 AC. (DEED PARCEL #1)

PART LOT #232
DUKE ENERGY OHIO, INC.
O.R. 9802, P.C. 785
2.839 AC.

OWNERS LOT 632 AND
ELECTRIC COMPANY
D.B. 647, P.C. 230
3.914 AC.

THIS DOCUMENT AND ALL RELATED DETAIL DRAWINGS, SPECIFICATIONS, AND ELECTRONIC MEDIA PREPARED OR FURNISHED BY BAYER BECKER (BB), ARE INSTRUMENTS OF BB'S PROFESSIONAL SERVICE, AND IS THE EXCLUSIVE PROPERTY OF BB. NO DISCLOSURE, USE, REPRODUCTION, OR DUPLICATION IN WHOLE, OR IN PART, MAY BE MADE WITHOUT WRITTEN PERMISSION OF BB, AND IS DONE SO AT USER'S SOLE RISK. COPYRIGHT - ALL RIGHTS RESERVED.

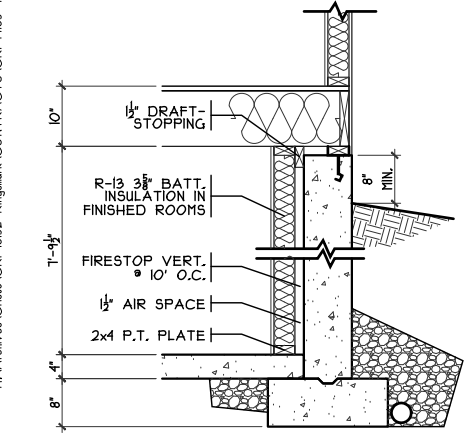
Item	Revision	Description	Date	Dwn:	Chk:

www.bayerbecker.com
110 S. College Avenue
Oxford, OH 45056 - 513.523.4270

PLOT PLAN
FUTURE LOT 6079
THE TRAILS OF TODD HUNTER
SECTION 24 TOWN 3, RANGE 3
CITY OF MONROE
BUTLER COUNTY, OHIO

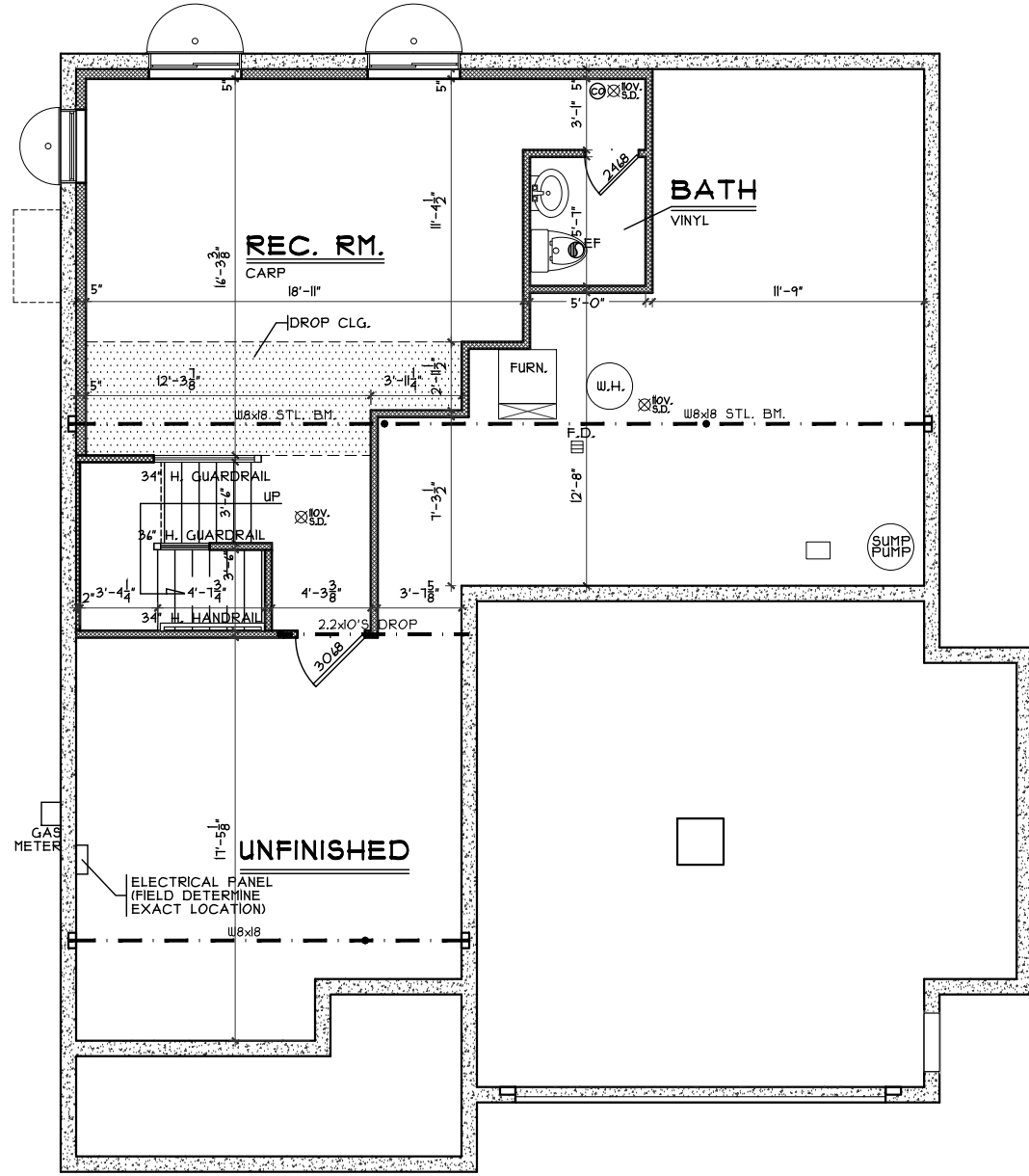
J:\PLOTPLANS\Trails of Todd Hunter \Lot 6079

Drawn by: **CRISTO HOMES**
Checked by: **JOL**
Issue Date: **3/31/20**



FIN. LL WALL DETAIL

SCALE: 3/8" = 1'-0"



FINISHED LOWER LEVEL

SCALE: 1/8" = 1'-0" 5/11 SQ. FT.

OPTIONS

A2a

Finished Lower Level

Plan : Kingsmark
Date : 12.11.2019
Drawn : KMA
Scale : As Noted
Revised:
Sheet : 4 of 13

TH-6083

Proposed Residence:
Model Home
105 Hanford Ln
Trails Of Todhunter Lot #6079



7944 Tyers Place Blvd.
West Chester, OH 45389
513.755.0570 • www.cristohomes.com

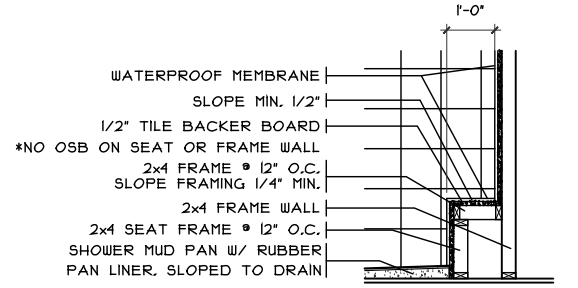
Kingsmark-C2 - Comp.

Cristo Homes reserves all property rights in these plans. These plans are not to be reproduced, changed, or copied in any manner. They are not to be given to a third party, either in full or in part, without first receiving written permission from Cristo Homes. In the event these plans are used by a third party, Cristo Homes shall be held harmless.

Issue Dates

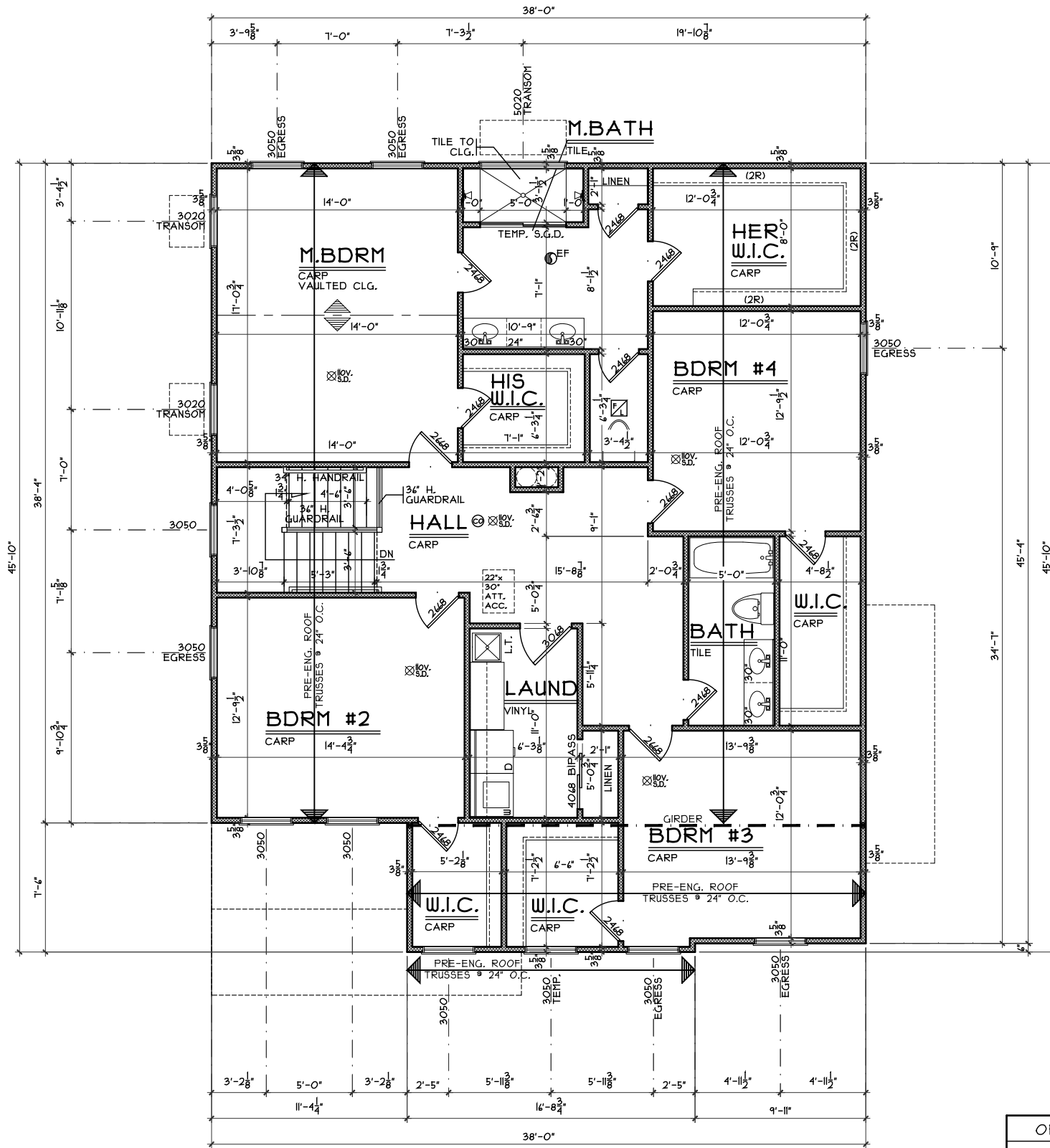
3/17/20	BDRH1

Monroe
Butler County



SHOWER SEAT DETAIL

SCALE: 1/8" = 1'-0"



SECOND FLOOR PLAN

SCALE: 1/8" = 1'-0" 1558 SQ. FT.

OPTIONS

Second Floor Plan

Plan: Kingsmark
Date: 12.11.2019
Drawn: KMA
Scale: As Noted
Revised:
Sheet: 6 of 13

TH-6083

Proposed Residence:
Model Home
105 Hanford Ln
Trails Of Todhunter Lot #6079

Kingsmark-C2 - Comp.

Cristo Homes reserves all property rights in these plans. These plans are not to be reproduced, changed, or copied in any manner. They are not to be given to a third party, either in full or in part, without first receiving written permission from Cristo Homes. In the event these plans are used by a third party, Cristo Homes shall be held harmless.

Issue Dates

3/17/20	BDRH

7844 Tyers Place Blvd.
West Chester, OH 45669
513.755.0570
www.cristohomes.com

Monroe
Butler County

A4