

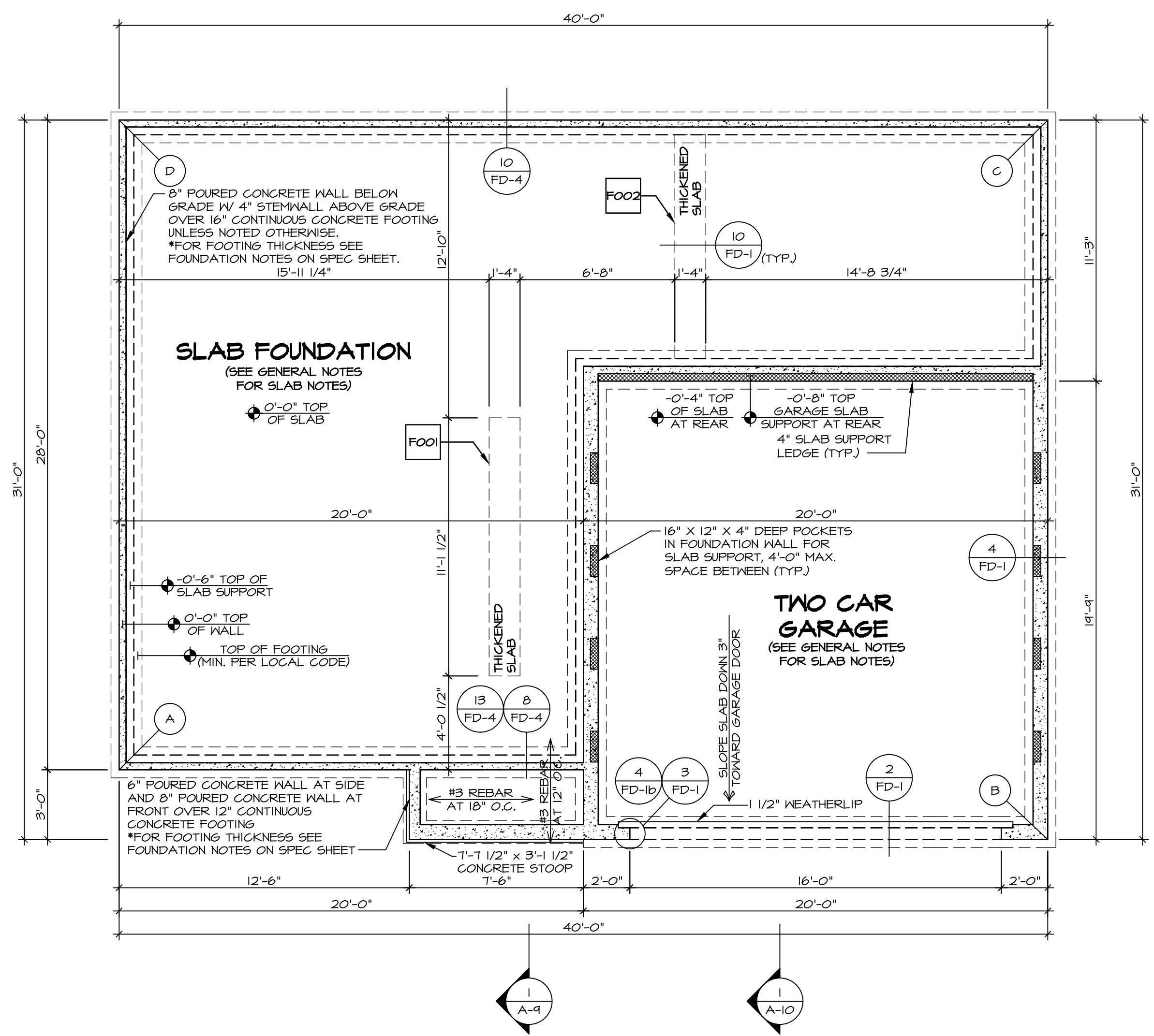
| PAD FOOTING SCHEDULE | | | | | |
|----------------------|------------|-------|--------|-----------|---------|
| IDENTIFIER | LENGTH | WIDTH | HEIGHT | ENG. NUM. | REMARKS |
| FO01 | 11'-1 1/2" | 1'-4" | 0'-8" | S0001 | |
| FO02 | 4'-7 3/4" | 1'-4" | 0'-8" | S0001 | |

| FOUNDATION DIAGONALS | | | |
|----------------------|--------------|---|--------------|
| A | | B | |
| A | 0" | A | 40'-1 11/32" |
| B | 40'-1 11/32" | B | 0" |
| C | 48'-4 29/32" | C | 31'-0" |
| D | 28'-0" | D | 50'-1 9/32" |

FOUNDATION NOTES - SLAB

- FOUNDATION UNDER HABITABLE SPACE:
CONCRETE SLAB ON 6 MIL VAPOR BARRIER OVER SUB-BASE (SEE SPEC SHEET FOR SLAB NOTES)
- FOUNDATION UNDER GARAGE:
UNEXCAVATED WITH CONCRETE SLAB ON VAPOR BARRIER OVER SUB-BASE (SEE SPEC SHEET FOR SLAB NOTES) OR STRUCTURAL CONCRETE SLAB ON VAPOR BARRIER OVER SUB-BASE (SEE SPEC SHEET FOR SLAB NOTES)
- SEE FOUNDATION HOLD DOWN SHEET FOR CONNECTION INFORMATION.
- SLAB LEDGE LOCATIONS VARY 1/4" GRADE BEAM(S) ORIENTATION. SEE GS-1 FOR DETAILS.
- THE DIRECTION OF THE ARROW IS THE DIRECTION OF REBAR, AS REQUIRED.
- ALL FOOTINGS ARE PLAIN, UNREINFORCED CONCRETE UNLESS NOTES OTHERWISE.

| LEGEND | |
|---------------------------------------|---|
| | BEARING WALL |
| | NON BEARING WALL |
| | INDICATES BEARING FROM POINT-LOAD ABOVE |
| | JACKS |
| | BEAM/HEADER |
| | PAD FOOTING |
| | STEEL COLUMN |
| | TRUSS TIE DOWN |
| | PORTAL FRAME |
| | JOIST/TRUSS |
| | LVL |
| | ENGINEERING PAGE NUMBER |
| SEE FC DETAILS FOR FRAMING CONNECTORS | |



FOUNDATION PLAN
SCALE: 1/4" = 1'-0"

DIV-COMM-LOT-UNIT
DCY-YC-5638
 COMM-LOT
 STREET ADDRESS
 6020 AVIATION TRAIL
 CITY DAYTON STATE OH ZIP 45424
 APT. NO. ---

© NVR, Inc. expressly reserves the right to modify or amend these plans at any time without notice. These plans are not to be reproduced, changed or altered in any way without the written consent of NVR, Inc.

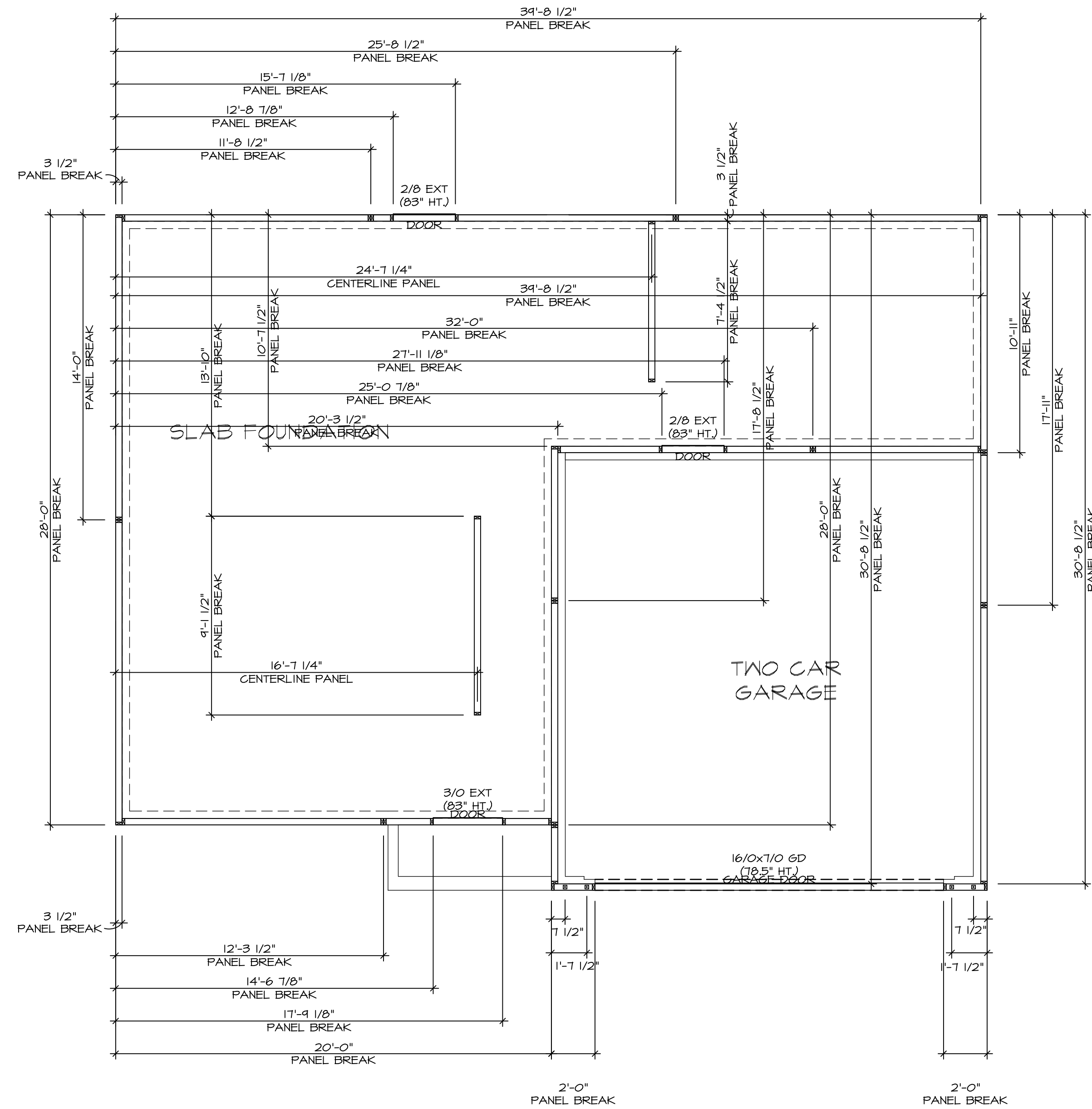
NVR
 NVR, Inc. Suite 100
 5285 Westchester Road
 Frederick, MD 21703

SET NO. CDPROO
 VERSION 01
 DRAWN BY
 DATE:
 OPTION FSA

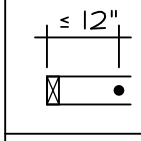


MODEL CEDAR
 DRAWING TITLE FOUNDATION PLAN
 OPTION DESCRIPTION SLAB FOUNDATION

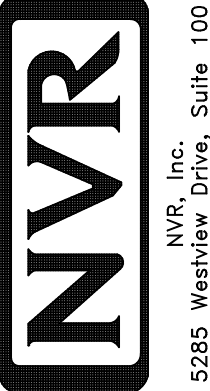
SHEET NO. A-3
 5

C:\NVR\Solves\CEDAR_CDPROO_01\DCY-YC-5638\2399179\Sheet\Lot_Specific\5_A-3_FD-LS_(FSD).dwg 10/06/21 = 312 gm

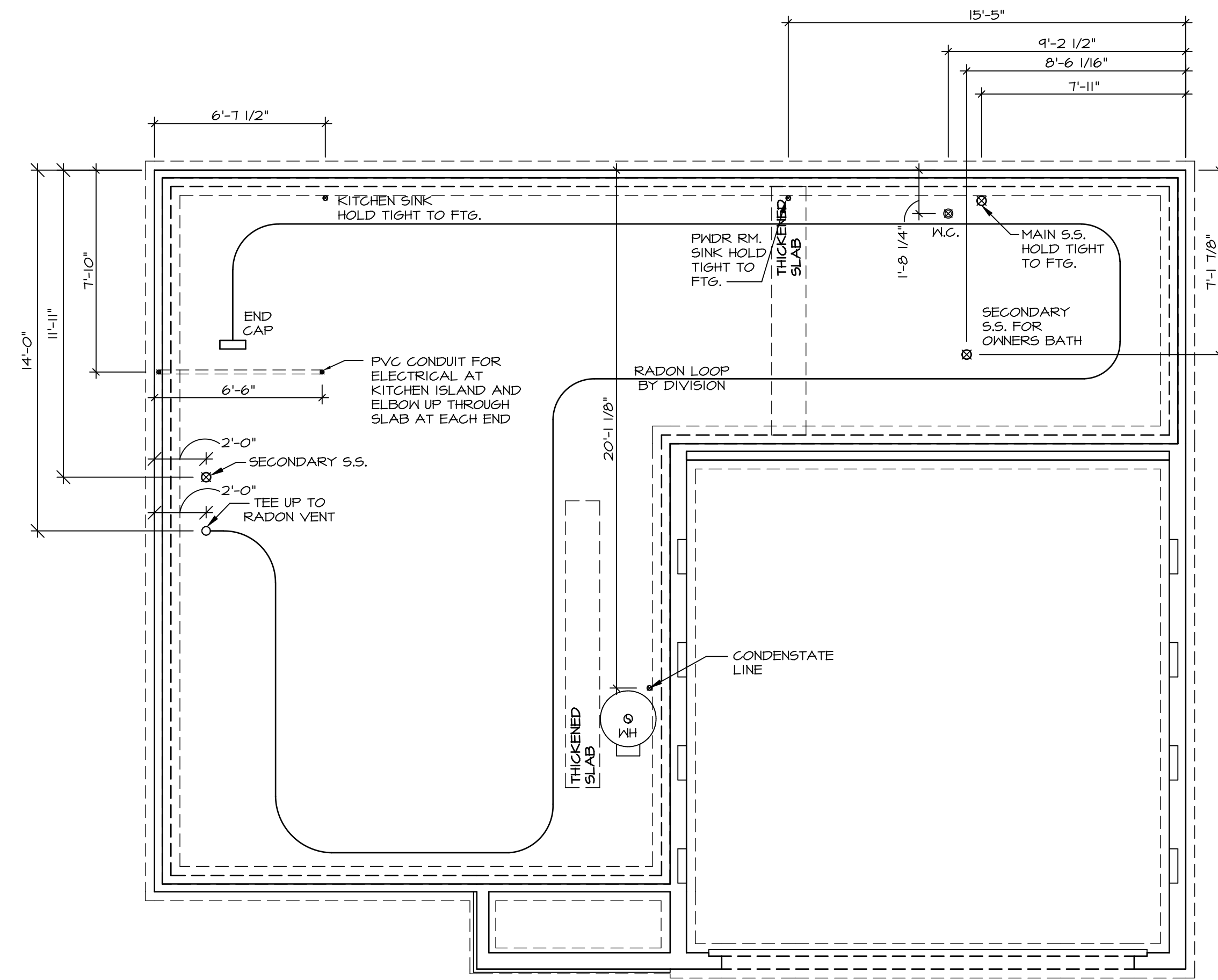


FOUNDATION HOLD DOWN DETAILS
 SCALE: 1/4" = 1'-0"

| HOLD DOWN NOTES | |
|---|--|
| REFER TO DETAIL (H/FD-1) FOR HOLD DOWN OFFSET DIMENSIONS. REFER TO DETAIL (I2/FD-1) FOR HOLD DOWNS ON CMU BLOCK. | |
|  | 1. ALL PANELS GREATER THAN 24" SHALL HAVE AN ANCHOR WITHIN 12" OF THE PANEL BREAKS / ENDS. (SEE DETAIL SHEET FF-1 FOR MORE INFORMATION ON ANCHOR DETAILS) |
|  | 1. STRAP: a. ON FOUNDATION USE (5THD14) b. ON FLOOR SYSTEM USE (5THD14R.J.) 2. ALL OTHER HOLD DOWN SEE DETAIL (MB-2) FOR MORE INFORMATION. 3. STRAP LOCATION ON PLANS SHOWN BY DASHED DIMENSION TO CENTER OF STUDS |
| OR | |
|  | 1. 5/8" THREADED ROD 2. ALL OTHER HOLD DOWN SEE DETAIL (MB-2) FOR MORE INFORMATION. 3. BOLT LOCATION ON PLANS SHOWN BY SOLID DIMENSION TO CENTER OF BOLT |

| | | | |
|--|---|--|--|
| SHEET NO. A-4 | MODEL CEDAR DRAWING TITLE FOUNDATION HOLD DOWN DETAILS OPTION DESCRIPTION 6 | SET NO. CDR00 VERSION 01 DRAWN BY DATE: OPTION | <div style="text-align: center;">  <small>NVR, Inc. 5285 Washburn, Suite 100 Frederick, MD 21703</small> </div> <div style="font-size: 8px; margin-top: 10px;"> <small>© NVR, Inc. expressly reserves the right to modify or amend these plans at any time without notice. These plans are not to be reproduced, changed or altered in any way without the written consent of NVR, Inc.</small> </div> |
| DIV-COMM-LOT-UNIT DCY-VC-5638 | | | |
| COMM-LOT WRIGHT LANDING - 5638 | | | |
| STREET ADDRESS 6020 AVIATION TRAIL | | | |
| CITY STATE OH ZIP DAYTON OH 45424 | | | |
| APT. NO. ---- | | | |

NOTE
 RADON REMEDIATION
 RADON LOOP:
 - (4") PERFORATED HDPE "LOOP"
 - MUST BE PLACED IN STONE BED SLIGHTLY HIGHER THAN ANY INTERIOR DRAINTILE
 - LOOP TO BE SEPARATE FROM ANY DRAINTILE ELEMENTS
 - TO BE CORRUGATED HDPE PIPE
 - SCREENS TO BE INSTALLED THROUGH LOOP AT TEE UP INTO STACK
 STACK REQUIREMENTS:
 - 3" PVC STACK (4" IF BASEMENT IS GREATER THAN 2200 SQFT.)
 - NO PART OF STACK IS TO BE HORIZONTAL (45° ELBOWS PERMITTED AS REQUIRED)
 - PIPE TO BE PHYSICALLY LABELED IN THE FIELD AS "RADON VENT" OR OTHER
 JURISDICTIONALLY REQUIRED LANGUAGE (ON EVERY LEVEL OF HOUSE)
 - ROOF TERMINATION TO BE IN TOP 1/3 OF ROOF
 - SCREEN OR VENT CAP INSTALLED TO KEEP PESTS OUT OF RADON VENT AT ROOF TERMINATION.



PLUMBING PLAN
 SCALE: 1/4" = 1'-0"

| | | | |
|--------------------------------|---------------------------------------|----------------------|--|
| SHEET NO. A-5 | MODEL CEDAR | SET NO. CDROO | DIV-COMM-LOT-UNIT DCY-YC-5638 |
| | DRAWING TITLE PLUMBING PLAN | VERSION 01 | |
| OPTION DESCRIPTION 7 | | DATE: | STREET ADDRESS 6020 AVIATION TRAIL |
| | | OPTION | CITY DAYTON |
| | | | STATE OH |
| | | | ZIP 45424 |

© NVR, Inc. expressly reserves the right to modify or amend these plans at any time without notice. These plans are not to be reproduced, changed or altered in any way without the written consent of NVR, Inc.

NVR
 NVR, Inc. Suite 100
 Frederick, MD 21703

C:\NVR\Solves\CEDAR_CDROO_01\DCY-YC-5638\2399179\SheetA Lot_Specific\7 A-5 PLUMB_LS.dwg 10/05/21 = 3:12 am

| FIRST FLOOR JACK SCHEDULE | | | |
|---------------------------|-------------------------------|-----------|---------|
| IDENTIFIER | DESCRIPTION | ENG. NUM. | REMARKS |
| J101 | JACK - (3) 2X4 SPF STUD GRADE | 1019 | |
| J102 | JACK - (2) 2X4 SPF STUD GRADE | 1019 | |
| J103 | JACK - (2) 2X4 SPF STUD GRADE | 1014 | |
| J104 | JACK - (2) 2X4 SPF STUD GRADE | 1014 | |
| J105 | JACK - (2) 2X4 SPF STUD GRADE | 1012 | |
| J106 | JACK - (4) 2X4 SP#1 | 1025 | |
| J107 | JACK - (4) 2X4 SP#1 | 1025 | |
| J108 | JACK - (2) 2X4 SPF STUD GRADE | 1008 | |
| J109 | JACK - (2) 2X4 SPF STUD GRADE | 1008 | |
| J110 | JACK - (2) 2X4 SPF STUD GRADE | 1010 | |
| J111 | JACK - (2) 2X4 SPF STUD GRADE | 1010 | |
| J112 | JACK - (4) 2X4 SPF STUD GRADE | 1006 | |
| J113 | JACK - (4) 2X4 SPF STUD GRADE | 1006 | |
| J114 | JACK - (4) 2X4 SPF STUD GRADE | 1006 | |
| J115 | JACK - (4) 2X4 SPF STUD GRADE | 1006 | |

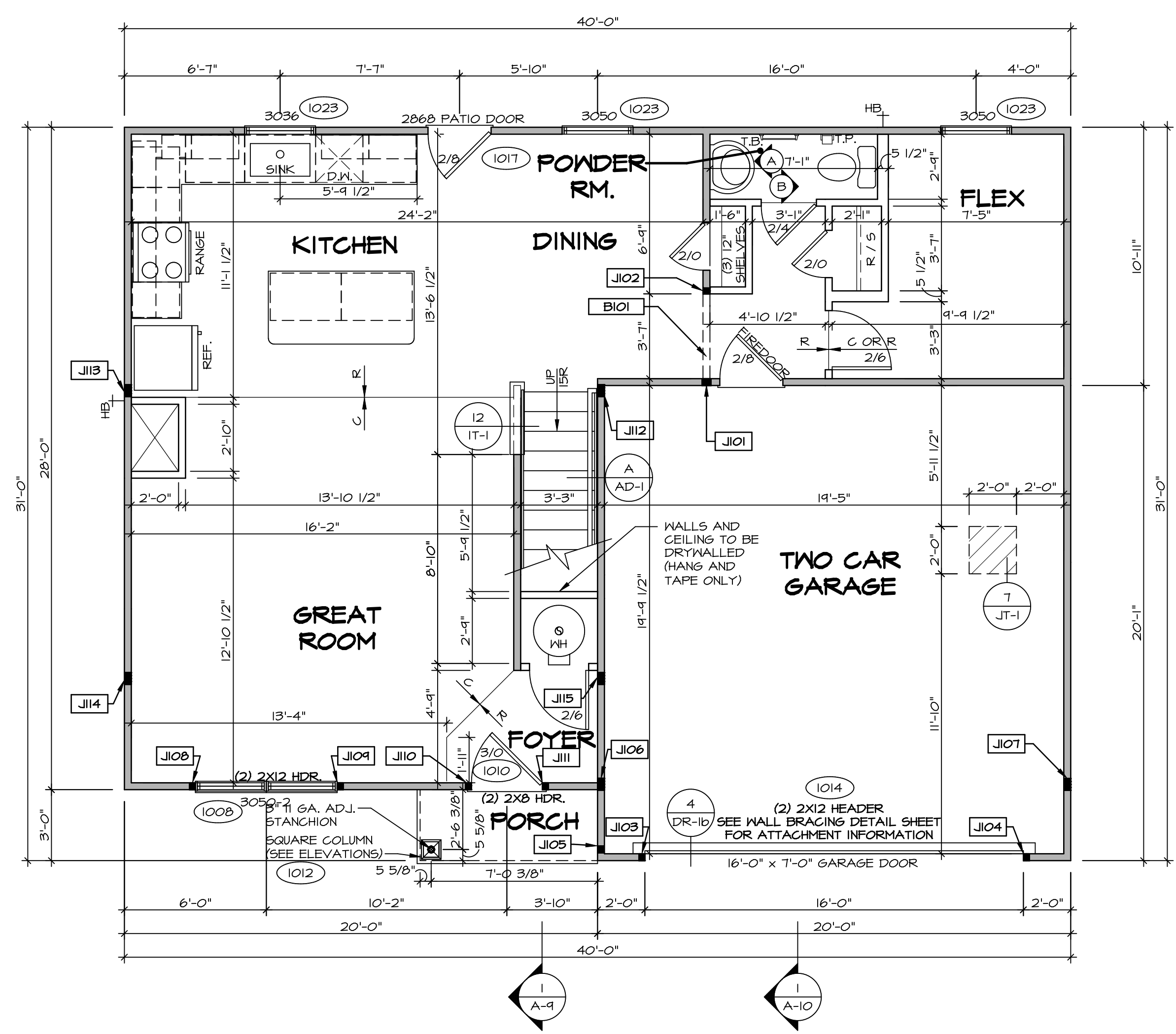
| FIELD INSTALLED FIRST FLOOR BEAM/HEADER SCHEDULE | | | | |
|--|--------------------------|--------|-----------|---------|
| IDENTIFIER | DESCRIPTION | LENGTH | ENG. NUM. | REMARKS |
| B101 | INT HEADER - 2X8 - 2 FLY | 4'-1" | 1019 | |

| LEGEND | |
|--------|---|
| | BEARING WALL |
| | NON BEARING WALL |
| | INDICATES BEARING FROM POINT-LOAD ABOVE |
| | JACKS |
| | BEAM/HEADER |
| | PAD FOOTING |
| | STEEL COLUMN |
| | TRUSS TIE DOWN |
| | PORTAL FRAME |
| | JOIST/TRUSS |
| | LVL |
| | ENGINEERING PAGE NUMBER |

SEE FC DETAILS FOR FRAMING CONNECTORS

- FLOOR PLAN NOTES**
- ALL HEADERS ARE (2) 2x6 w/ 2x4 WALLS OR (3) 2x6 w/ 2x6 WALLS, UNLESS OTHERWISE NOTED.
 - ALL HEADERS TO HAVE (1) 2x4 OR 2x6 JACK AND KING STUD EACH END, UNLESS OTHERWISE NOTED.
 - MULTI-OPENING HEADERS TO HAVE (2) JACKS AT INTERMEDIATE BEARINGS, UNLESS OTHERWISE NOTED. NO ADDITIONAL FLOOR SYSTEM BLOCKING OR CONTINUOUS LOAD PATH JACKS ARE REQUIRED UNLESS OTHERWISE NOTED.
 - ALL EXTERIOR WALLS TO BE 4" w/ OSB OR 3 1/2" w/ LAMINATED FIBROUS STRUCTURAL SHEATHING, ALL INTERIOR WALLS TO BE 3 1/2", UNLESS OTHERWISE NOTED.
 - HATCHED AREAS INDICATE DROPPED CEILING. ALL DROPPED CEILING ARE 12" UNLESS OTHERWISE NOTED.
 - SEE "BRACED WALL PANEL DETAIL SHEET" FOR SPECIAL WALL FRAMING LOCATIONS AND HEADER SIZES, IF APPLICABLE.
 - SEE STANDARD DETAIL CATEGORY "11" SHEET(S) FOR INTERIOR TRIM DETAILS.
 - SEE ARCHITECTURAL DETAIL SHEET "AD" FOR HOUSE SPECIFIC INTERIOR TRIM OPTION TABLE.
 - ALL WINDOWS HAVE 1"-0 1/2" HEADER HEIGHT UNLESS OTHERWISE NOTED.
 - ALL HEADERS IN NON-BEARING WALLS SHALL BE A SINGLE FLAT 2X4 OR 2X6 ATTACHED TO CRIPPLES ABOVE, UNLESS OTHERWISE NOTED.
 - TANKED WATER HEATER SHOWN AS BASE CONDITION, OPTIONAL TANKLESS WATER HEATER IS AVAILABLE IN LIEU OF TANKED WATER HEATER.

- GYPSUM NOTES**
- AT GARAGE:
GYPSUM BOARD AT COMMON WALLS, CEILING, BEAM WRAPS AND SUPPORTS PER STANDARD DETAIL FA-1(b) FIRE ASSEMBLY OR AS REQUIRED BY LOCAL CODE.
- AT STAIRS:
1/2" GYPSUM BOARD AT UNDERSIDE OF STAIRS AND WALLS IN CLOSET



FIRST FLOOR PLAN
SCALE: 1/4" = 1'-0"

© NVR, Inc. expressly reserves the right to modify these plans without notice. These plans are not to be reproduced, changed or altered in any way without the written consent of NVR, Inc.

NVR
NVR, Inc. Suite 100
Fredericks, MD 21703

SET NO. CDPROO
VERSION 01
DRAWN BY
DATE:
OPTION

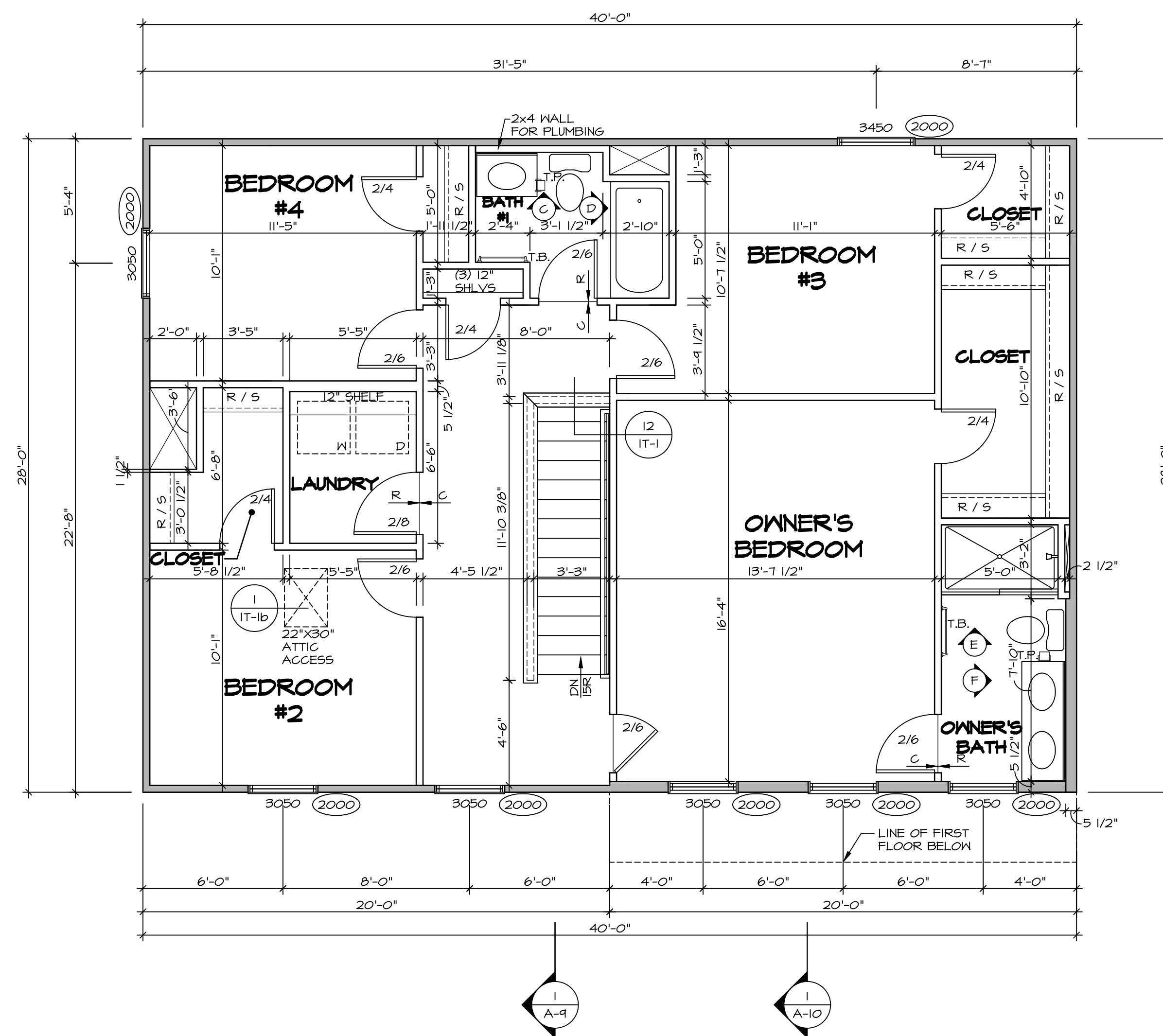
MODEL
CEDAR
DRAWING TITLE
FIRST FLOOR PLAN
OPTION DESCRIPTION

SHEET NO.
A-7

9

DCY-V-C-5638
A-7 PLNT_LS.dwg 10/06/21 - 3:12 pm

6020 AVIATION TRAIL
DAYTON OH 45424



SECOND FLOOR PLAN
SCALE: 1/4" = 1'-0"

LEGEND

| | |
|--|---|
| | BEARING WALL |
| | NON BEARING WALL |
| | INDICATES BEARING FROM POINT-LOAD ABOVE |
| | JACKS |
| | BEAM/HEADER |
| | PAD FOOTING |
| | STEEL COLUMN |
| | TRUSS TIE DOWN |
| | PORTAL FRAME |
| | JOIST/TRUSS |
| | LVL |
| | ENGINEERING PAGE NUMBER |

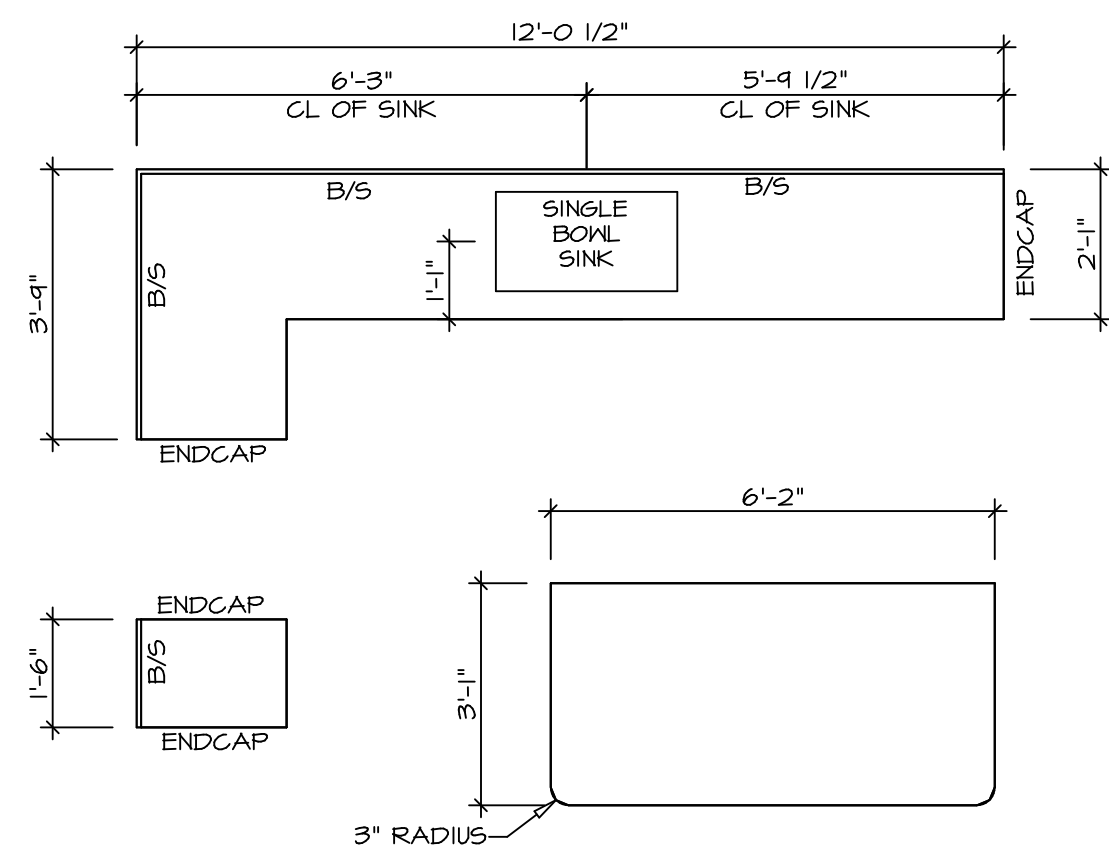
SEE FC DETAILS FOR FRAMING CONNECTORS

- FLOOR PLAN NOTES**
- ALL HEADERS ARE (2) 2x6 w/ 2x4 WALLS OR (3) 2x6 w/ 2x6 WALLS, UNLESS OTHERWISE NOTED.
 - ALL HEADERS TO HAVE (1) 2x4 OR 2x6 JACK AND KING STUD EACH END, UNLESS OTHERWISE NOTED. MULTI-OPENING HEADERS TO HAVE (2) JACKS AT INTERMEDIATE BEARINGS, UNLESS OTHERWISE NOTED. NO ADDITIONAL FLOOR SYSTEM BLOCKING OR CONTINUOUS LOAD PATH JACKS ARE REQUIRED UNLESS OTHERWISE NOTED.
 - ALL EXTERIOR WALLS TO BE 4" w/ OSB OR 3 1/2" w/ LAMINATED FIBROUS STRUCTURAL SHEATHING, ALL INTERIOR WALLS TO BE 3 1/2", UNLESS OTHERWISE NOTED.
 - HATCHED AREAS INDICATE DROPPED CEILINGS. ALL DROPPED CEILINGS ARE 12" UNLESS OTHERWISE NOTED. SEE 'BRACED WALL PANEL DETAIL SHEET' FOR SPECIAL WALL FRAMING LOCATIONS AND HEADER SIZES, IF APPLICABLE.
 - SEE STANDARD DETAIL CATEGORY '11' SHEET(S) FOR INTERIOR TRIM DETAILS.
 - SEE ARCHITECTURAL DETAIL SHEET 'AD' FOR HOUSE SPECIFIC INTERIOR TRIM OPTION TABLE.
 - ALL WINDOWS HAVE 1'-0 1/2" HEADER HEIGHT UNLESS OTHERWISE NOTED.
 - ALL HEADERS IN NON-BEARING WALLS SHALL BE A SINGLE FLAT 2x4 OR 2x6 ATTACHED TO CRIPPLES ABOVE, UNLESS OTHERWISE NOTED.
 - TANKED WATER HEATER SHOWN AS BASE CONDITION, OPTIONAL TANKLESS WATER HEATER IS AVAILABLE IN LIEU OF TANKED WATER HEATER.

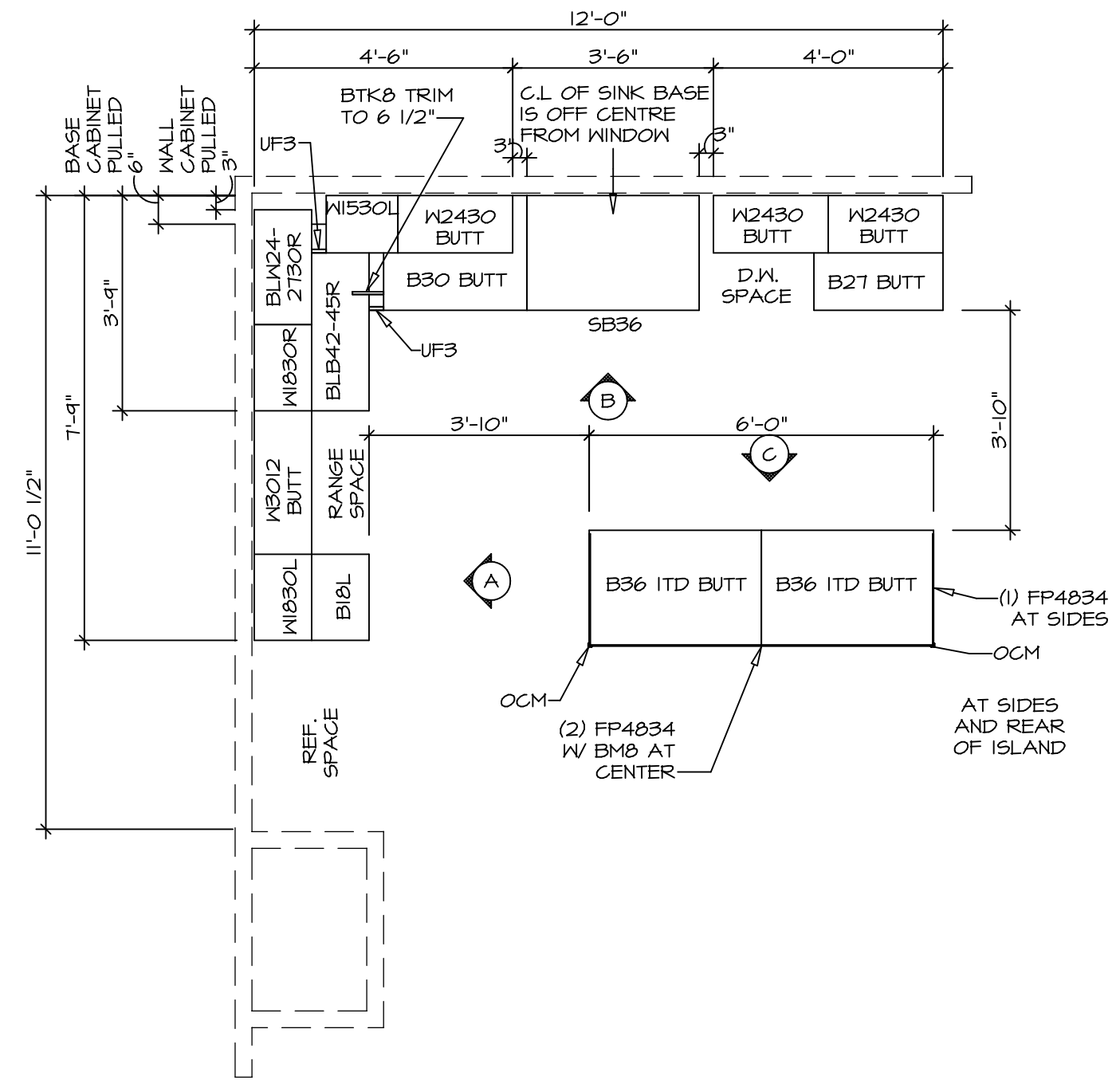
- GYPSUM NOTES**
- AT GARAGE:
GYPSUM BOARD AT COMMON WALLS, CEILING, BEAM WRAPS AND SUPPORTS PER STANDARD DETAIL FA-1(b) FIRE ASSEMBLIES OR AS REQUIRED BY LOCAL CODE.
- AT STAIRS:
1/2" GYPSUM BOARD AT UNDERSIDE OF STAIRS AND WALLS IN CLOSET

| | | | | | | |
|-------------------------|-----------------------|---|-------------------------------------|---|---|---|
| SHEET NO. A-8 | MODEL CEDAR | DRAWING TITLE SECOND FLOOR PLAN | OPTION DESCRIPTION OPTION | SET NO. CDPROO VERSION 01 DRAWN BY DATE: OPTION | NVR, Inc. Suite 100 Frederick, MD 21703 5285 Washburn Rd Frederick, MD 21703 | DIV-COMM-LOT-UNIT DCY-VC-5638 COMM-LOT WRIGHT LANDING - 5638 STREET ADDRESS 6020 AVIATION TRAIL CITY DAYTON STATE OH ZIP 45424 |
| | | | | | | |

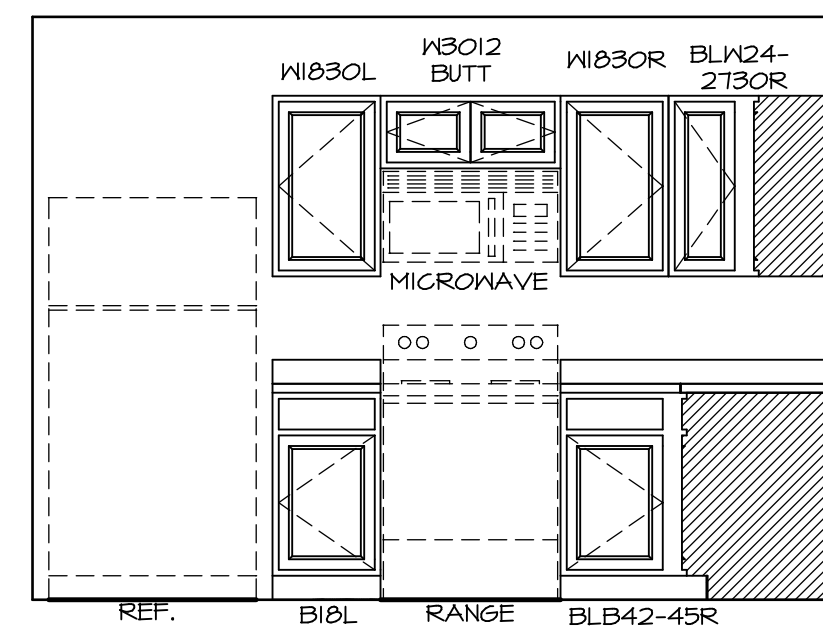
C:\NVR\Solves\CEDAR_CBROD_01\DCY-VC-5638\2399179\Sheet\Lot_Specific\10_A-8_PLN2_LS.dwg 10/06/21 - 3:12 am



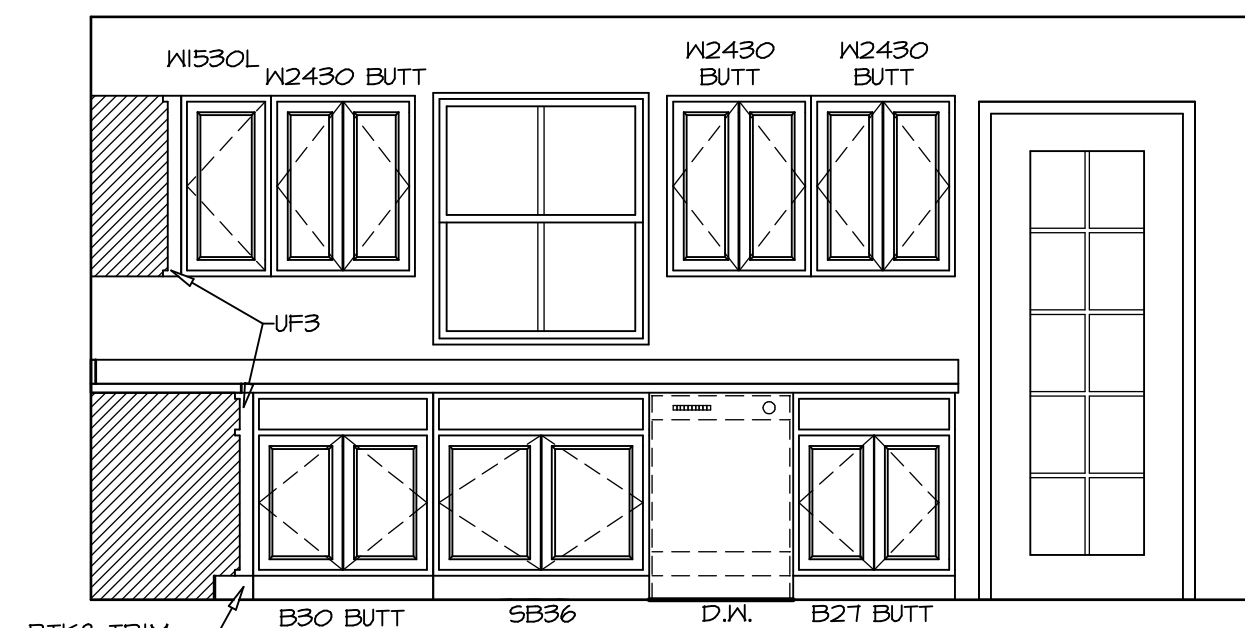
2 **KITCHEN COUNTERTOP PLAN KC - 3640**
 A-12 SCALE: 3/8" = 1'-0"



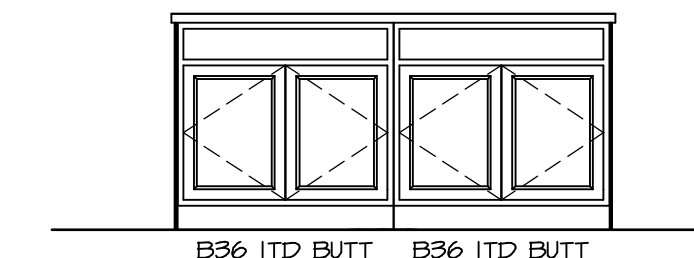
1 **KITCHEN CABINET PLAN KC - 3640**
 A-12 SCALE: 3/8" = 1'-0"



A **ELEVATION**
 SCALE: 3/8" = 1'-0"



B **ELEVATION**
 SCALE: 3/8" = 1'-0"



C **ELEVATION**
 SCALE: 3/8" = 1'-0"

NOTES:
 1. CABINET LAYOUT(S) ARE BASED ON FINISHED DIMENSIONS TO DRYWALL.
 2. IF KITCHEN PLANS/ELEVATIONS CALL-OUT STANDARD MOULDING, REFER TO STANDARD DETAIL (1/KT-1) FOR REPLACEMENT BASED ON CABINET STYLE.
 3. ALL (UF) FILLERS ARE TO BE "TRIM TO FIT".

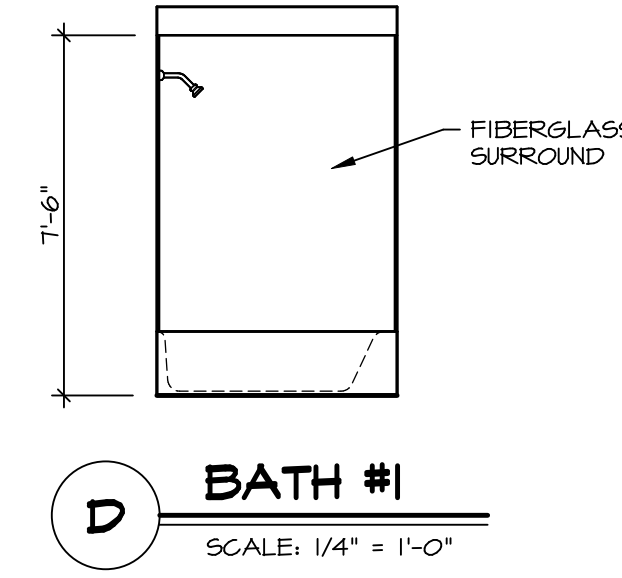
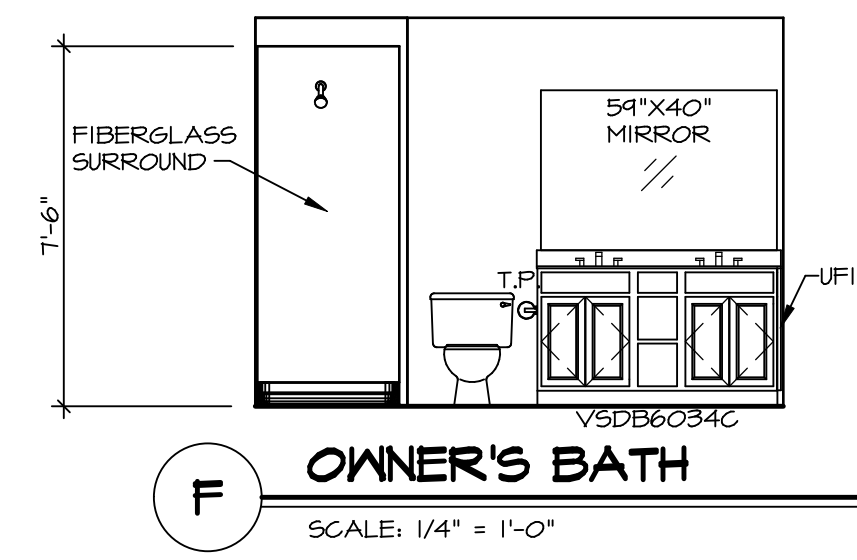
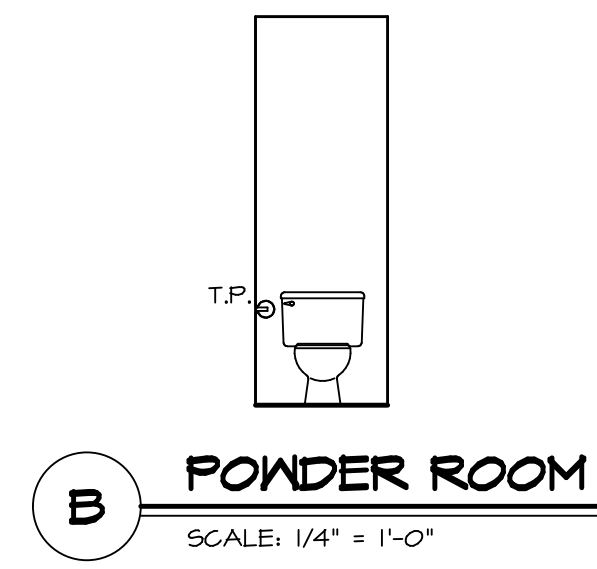
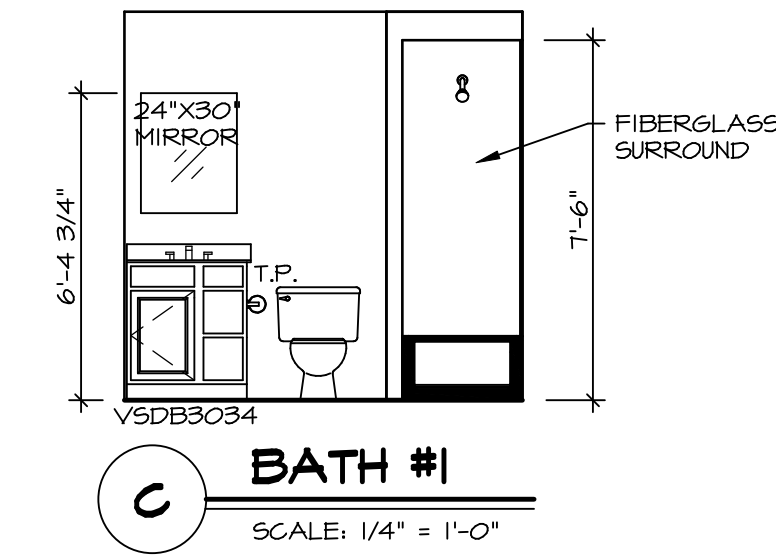
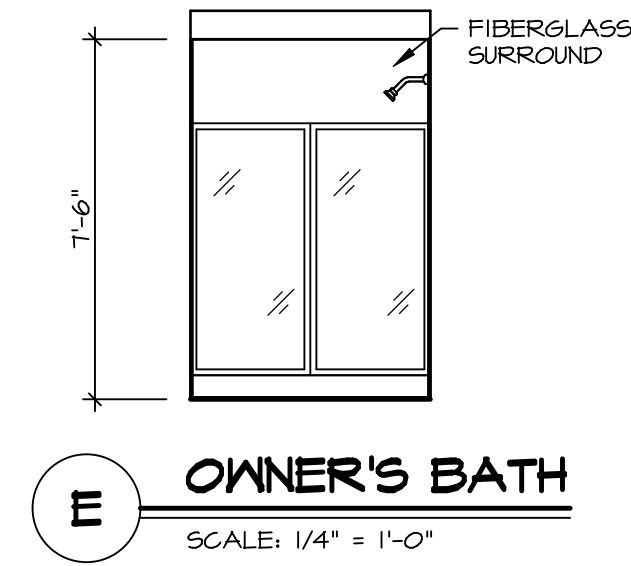
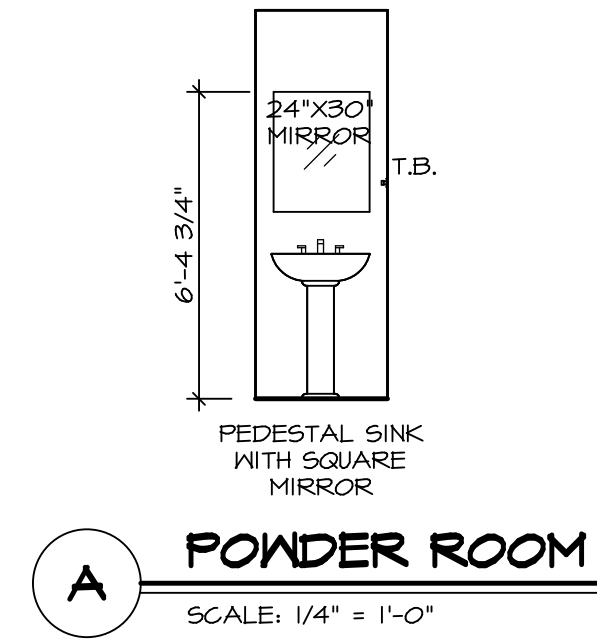
| | | | | | |
|--------------------------------------|---------------------------------------|---------------------------------------|--------------|-------------|-----------|
| MODEL CEDAR | SET NO. CDR00 | OPTION DESCRIPTION | STATE OH | CITY DAYTON | ZIP 45424 |
| | VERSION 01 | | | | |
| DRAWING TITLE KITCHEN PLAN | COMM-LOT | STREET ADDRESS 6020 AVIATION TRAIL | APT. NO. --- | CITY DAYTON | ZIP 45424 |
| | BIV-COMM-LOT-UNIT | | | | |
| SHEET NO. A-12 | PROJECT ADDRESS DCY-VC-5638 | | | | DATE |
| 14 | DRAWN BY | | | | DATE |
| | OPTION | | | | DATE |

NVR
 NVR, Inc., Suite 100
 5285 Westchester, Frederick, MD 21703

© NVR, Inc. expressly reserves the right to modify or change these plans without notice. These plans are not to be reproduced, changed or altered in any way without the prior written consent of NVR, Inc.

NOTES:

1. TEMPERED GLASS SHOWER ENCLOSURE WITH SWING DOORS OR OPTIONAL SLIDING DOOR BY DIVISION
2. TUB ACCESS PANELS PROVIDED AS NEEDED, ALL MATERIALS BY DIVISION
3. REFER TO SHEET IT-2 FOR TUB AND SHOWER DETAILS
4. ALL VSDB24-42 DRAWERS TO BE SET ON RIGHT HAND.
5. ALL BATH ELEVATIONS ARE SHOWN PER PLAN.



| | | | |
|-----------|--------------------|----------|--------|
| SHEET NO. | MODEL | SET NO. | CDPROO |
| A-13 | CEDAR | VERSION | 01 |
| | DRAWING TITLE | DRAWN BY | |
| | BATH ELEVATIONS | DATE: | |
| | OPTION DESCRIPTION | OPTION | |
| 15 | | | |

NVR
NVR, Inc., Suite 100
5285 Washington Blvd.
Frederick, MD 21703

© NVR, Inc. expressly reserves the right to modify or change any of the information contained in these plans. These plans are not to be reproduced, changed or altered in any way without the written consent of NVR, Inc.

| | |
|-------------------|-----------------------|
| DIV-COMM-LOT-UNIT | DCY-YC-5638 |
| COMM-LOT | |
| STREET ADDRESS | WRIGHT LANDING - 5638 |
| CITY | DAYTON |
| STATE | OH |
| ZIP | 45424 |
| APT. NO. | ---- |