

LEGEND	
	BEARING WALL
	NON BEARING WALL
	INDICATES BEARING FROM POINT-LOAD ABOVE
	JACKS
	BEAM/HEADER
	PAD FOOTING
	STEEL COLUMN
	PORTAL FRAME
	JOIST/TRUSS
	LVL
	ENGINEERING PAGE NUMBER

SEE FC DETAILS FOR FRAMING CONNECTORS

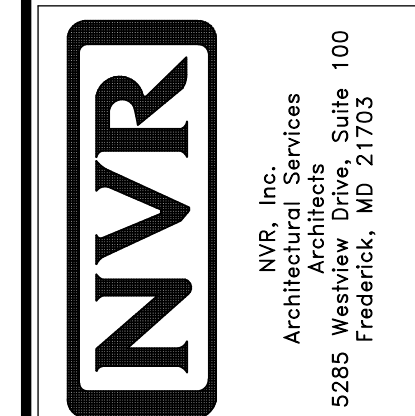
- FLOOR PLAN NOTES**
1. ALL HEADERS ARE (2) 2x6 w/ 2x4 WALLS OR (3) 2x6 w/ 2x6 WALLS, UNLESS OTHERWISE NOTED.
 2. ALL HEADERS TO HAVE (1) 2x4 OR 2x6 JACK EACH END, UNLESS OTHERWISE NOTED.
 3. ALL EXTERIOR WALLS TO BE 4" AND ALL INTERIOR WALLS TO BE 3 1/2", UNLESS OTHERWISE NOTED.
 4. HATCHED AREAS INDICATE DROPPED CEILINGS. ALL DROPPED CEILINGS ARE 12" UNLESS OTHERWISE NOTED.
 5. SEE "BRACED WALL PANEL DETAIL SHEET" FOR SPECIAL WALL FRAMING LOCATIONS AND HEADER SIZES, IF APPLICABLE.
 6. SEE STANDARD DETAIL CATEGORY "IT" SHEET(S) FOR INTERIOR TRIM DETAILS.
 7. SEE ARCHITECTURAL DETAIL SHEET "AD" FOR HOUSE SPECIFIC INTERIOR TRIM OPTION TABLE.
 8. ALL WINDOWS HAVE 7'-0 1/2" HEADER HEIGHT UNLESS OTHERWISE NOTED.
 9. ALL CASED OPENINGS AT T-11, UNLESS OTHERWISE NOTED.

- GYPSUM NOTES**
- AT GARAGE:
GYPSUM BOARD AT COMMON WALLS, CEILING, BEAM WRAPS AND SUPPORTS PER STANDARD DETAIL FA-1(b) FIRE ASSEMBLIES OR AS REQUIRED BY LOCAL CODE.
- AT STAIRS:
1/2" GYPSUM BOARD AT UNDERSIDE OF STAIRS AND WALLS IN CLOSET

BASEMENT FLOOR PLAN
SCALE: 1/4" = 1'-0"

SHEET NO.	MODEL	SET NO.	VERSION	DRAWN BY	DATE:	OPTION	DESCRIPTION	REMARKS
A-6	PALERMO	03	03				BASEMENT FLOOR PLAN	
51								

NVR, Inc., owner, expressly reserves its common law copyright in these plans. These plans are not to be reproduced, changed, adapted in any way, or otherwise used, without the prior written consent of NVR, Inc.



FIRST FLOOR JACK SCHEDULE				
IDENTIFIER	DESCRIPTION	OPTIONS	ENG. NUM.	REMARKS
J106	JACK - (2) 2X4 SPF STUD GRADE		1012	
J107	JACK - (2) 2X4 SPF STUD GRADE		1012	
J108	JACK - (2) 2X4 SPF STUD GRADE		1012	
J109	JACK - (3) 2X4 SPF STUD GRADE	GCB	1046	
J110	JACK - (3) 2X4 SPF STUD GRADE	GCB	1046	
J114	JACK - (2) 2X4 SPF STUD GRADE	EDQMAP	1075, 1076	
J120	JACK - (4) 2X6 SPF STUD GRADE	MAA	1019	
J121	JACK - (3) 2X6 SPF STUD GRADE	MAA	1019	FIELD INSTALLED
J122	JACK - (3) 2X4 SPF STUD GRADE	SRM	1040	
J123	JACK - (3) 2X4 SPF STUD GRADE	SRM	1044	
J124	JACK - (3) 2X4 SP#1	ELD	1021	
J133	JACK - (2) 2X4 SPF STUD GRADE	GCBMAV	1044, 1131	CRIPPLES
J134	JACK - (2) 2X4 SPF STUD GRADE	GCBMAV	1044, 1131	CRIPPLES
J137	JACK - (3) 2X4 SPF STUD GRADE	EVP, MAV	1129	
J164	JACK - (3) 2X4 SPF STUD GRADE	EVP, MAV	1129	
J164	JACK - (3) 2X4 SP#1	ELD		

LVL PLY TO PLY FASTENING SCHEDULE:

1A - (2) FLY UP TO AND INCLUDING 11 7/8" TALL; FASTEN FLIES W/ (2) ROWS 16D NAILS AT 12" O.C.
 2A - (2) FLY 14" TO AND INCLUDING 18" TALL (INCLUSIVE); FASTEN FLIES W/ (3) ROWS 16D NAILS AT 12" O.C.
 3A - (2) FLY 20" TALL AND OVER; FASTEN FLIES W/ (4) ROWS 16D NAILS AT 12" O.C.
 4A - (3) FLY UP TO AND INCLUDING 11 7/8" TALL; FASTEN FLIES W/ (2) ROWS 16D NAILS AT 12" O.C. FROM EACH SIDE
 5A - (3) FLY 14" TO AND INCLUDING 18" TALL (INCLUSIVE); FASTEN FLIES W/ (3) ROWS 16D NAILS AT 12" O.C. FROM EACH SIDE
 6A - (3) FLY 20" TALL AND OVER; FASTEN FLIES W/ (4) ROWS 16D NAILS AT 12" O.C. FROM EACH SIDE

FIRST FLOOR BEAM/HEADER SCHEDULE					
IDENTIFIER	DESCRIPTION	LENGTH	OPTIONS	ENG. NUM.	REMARKS
B101-3	LVL - 16	14'-4 1/2"	MAA	1019	5A, FIELD INSTALL
B103	BEAM STEEL - W12X35	22'-3 1/2"	ELD, MAV	1128	
B104	BEAM STEEL - W12X14	22'-3 1/2"	ELD, EVM, MAV	1129	
B107-2	LVL - 14	17'-4"	MAV	1050, 1051	2A, FIELD INSTALL

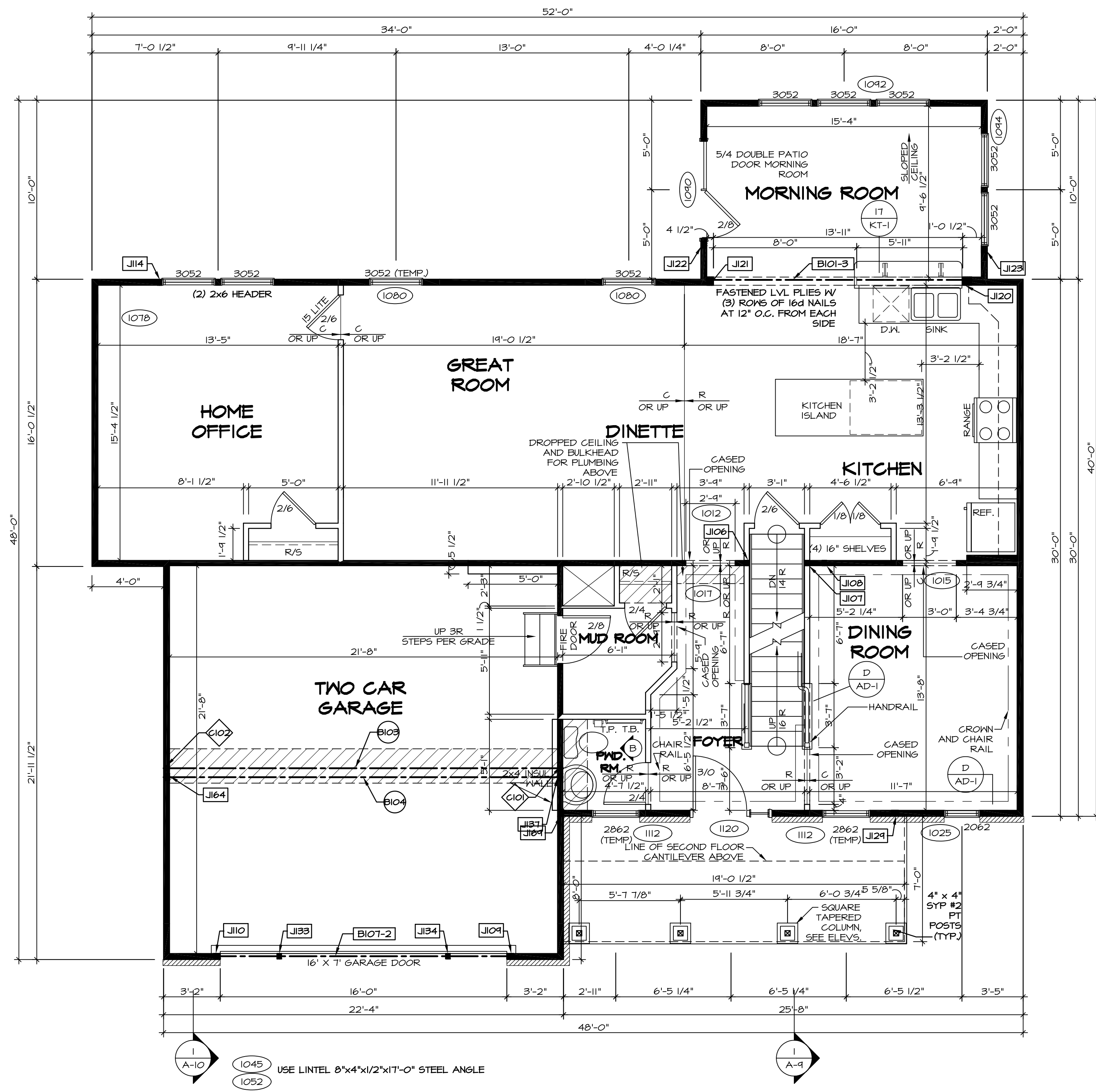
LEGEND	
	BEARING WALL
	NON BEARING WALL
	INDICATES BEARING FROM POINT-LOAD ABOVE
	JACKS
	BEAM/HEADER
	PAD FOOTING
	STEEL COLUMN
	PORTAL FRAME
	JOIST/TRUSS
	LVL
	ENGINEERING PAGE NUMBER

SEE FC DETAILS FOR FRAMING CONNECTORS

- FLOOR PLAN NOTES**
- ALL HEADERS ARE (2) 2x6 W/ 2x4 WALLS OR (3) 2x6 W/ 2x6 WALLS, UNLESS OTHERWISE NOTED.
 - ALL HEADERS TO HAVE (1) 2x4 OR 2x6 JACK EACH END, UNLESS OTHERWISE NOTED.
 - ALL EXTERIOR WALLS TO BE 4" AND ALL INTERIOR WALLS TO BE 3 1/2", UNLESS OTHERWISE NOTED.
 - HATCHED AREAS INDICATE DROPPED CEILINGS. ALL DROPPED CEILINGS ARE 12" UNLESS OTHERWISE NOTED.
 - SEE "BRACED WALL PANEL DETAIL SHEET" FOR SPECIAL WALL FRAMING LOCATIONS AND HEADER SIZES, IF APPLICABLE.
 - SEE STANDARD DETAIL CATEGORY "11" SHEET(S) FOR INTERIOR TRIM DETAILS.
 - SEE ARCHITECTURAL DETAIL SHEET "AD" FOR HOUSE SPECIFIC INTERIOR TRIM OPTION TABLE.
 - ALL WINDOWS HAVE 7'-0 1/2" HEADER HEIGHT UNLESS OTHERWISE NOTED.
 - ALL CASED OPENINGS AT 7'-11", UNLESS OTHERWISE NOTED.

- GYPSON NOTES**
- AT GARAGE:**
 GYPSUM BOARD AT COMMON WALLS, CEILING, BEAM WRAPS AND SUPPORTS PER STANDARD DETAIL FA-10) FIRE ASSEMBLIES OR AS REQUIRED BY LOCAL CODE.
- AT STAIRS:**
 1/2" GYPSUM BOARD AT UNDERSIDE OF STAIRS AND WALLS IN CLOSET

STEEL COLUMN SCHEDULE					
IDENTIFIER	STYLE	HEIGHT	OPTIONS	ENG. NUM.	REMARKS
C101	STANCHION - 3 IN SCHED 40	9'-0 11/16"	FBA	1057, 1133, 1128	
C102	STANCHION - 3 IN SCHED 40	9'-0 11/16"	FBA	1057, 1133, 1128	



FIRST FLOOR PLAN
 SCALE: 1/4" = 1'-0"

REVISIONS

REV. NO.	DATE	DESCRIPTION
01	08/04/16	TH - DRAWING ALIGNMENT

REMARKS

NVR, Inc., owner, expressly reserves its copyright in the common law plans. These plans are not to be reproduced, changed, altered, or otherwise used in any way without the written consent of NVR, Inc.

NVR
 NVR, Inc.
 Architects
 5285 Washington Blvd
 Frederick, MD 21703

SET NO. PALOO
 VERSION 03
 DRAWN BY
 DATE:
 OPTION

MODEL
PALERMO
 DRAWING TITLE
FIRST FLOOR PLAN
 OPTION DESCRIPTION

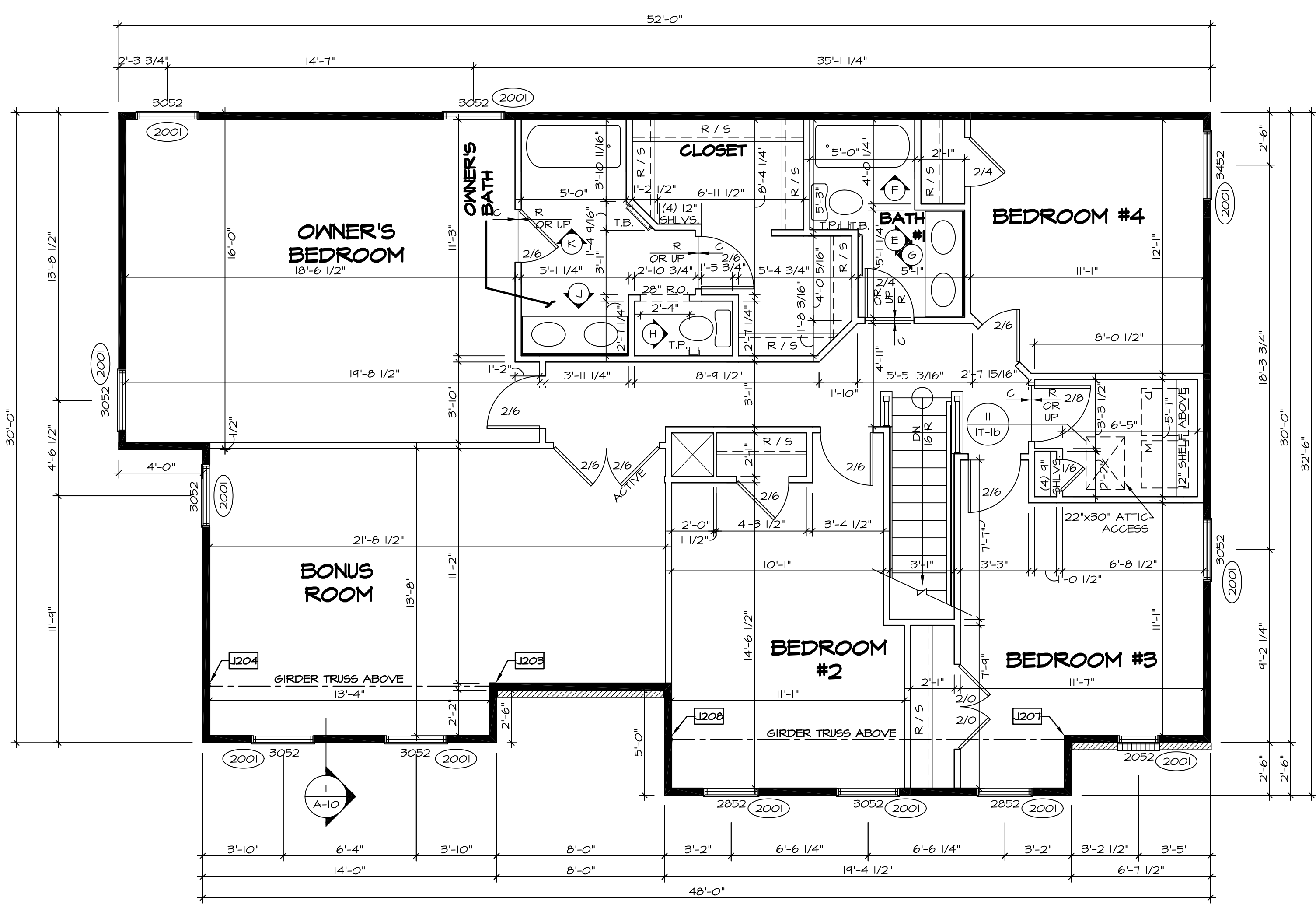
SHEET NO.
A-7
53

C:\NVR\Solves\PALERMO_PALOO_03\DC-16-K99\1371475\Sheets\1.ctb Specific.53 A-7 PLAN L5.dwg 03/15/17 - 404.6m

SECOND FLOOR JACK SCHEDULE				
IDENTIFIER	DESCRIPTION	OPTIONS	ENG. NUM.	REMARKS
J203	JACK - (2) 2X4 SPM	MAY	2011	EXTEND JACKS THROUGH TOP PLATE
J204	JACK - (2) 2X4 SPM	MAY	2011	EXTEND JACKS THROUGH TOP PLATE
J207	JACK - (3) 2X4 SPM	ELD	2011	EXTEND JACKS THROUGH TOP PLATE
J208	JACK - (3) 2X4 SPM	ELD	2011	EXTEND JACKS THROUGH TOP PLATE

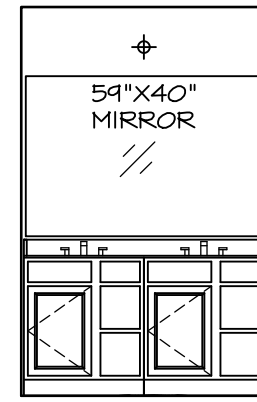
LEGEND	
	BEARING WALL
	NON BEARING WALL
	INDICATES BEARING FROM POINT-LOAD ABOVE
	JACKS
	BEAM/HEADER
	PAD FOOTING
	STEEL COLUMN
	PORTAL FRAME
	JOIST/TRUSS
	LVL
	ENGINEERING PAGE NUMBER

- FLOOR PLAN NOTES**
- ALL HEADERS ARE (2) 2x6 w/ 2x4 WALLS OR (3) 2x6 w/ 2x6 WALLS, UNLESS OTHERWISE NOTED.
 - ALL HEADERS TO HAVE (1) 2x4 OR 2x6 JACK EACH END, UNLESS OTHERWISE NOTED.
 - ALL EXTERIOR WALLS TO BE 4" AND ALL INTERIOR WALLS TO BE 3 1/2", UNLESS OTHERWISE NOTED.
 - HATCHED AREAS INDICATE DROPPED CEILINGS. ALL DROPPED CEILINGS ARE 12" UNLESS OTHERWISE NOTED.
 - SEE "BRACED WALL PANEL DETAIL SHEET" FOR SPECIAL WALL FRAMING LOCATIONS AND HEADER SIZES, IF APPLICABLE.
 - SEE STANDARD DETAIL CATEGORY "IT" SHEET(S) FOR INTERIOR TRIM DETAILS.
 - SEE ARCHITECTURAL DETAIL SHEET "AD" FOR HOUSE SPECIFIC INTERIOR TRIM OPTION TABLE.
 - ALL WINDOWS HAVE 1'-0 1/2" HEADER HEIGHT UNLESS OTHERWISE NOTED.
 - ALL CASED OPENINGS AT 7'-11", UNLESS OTHERWISE NOTED.



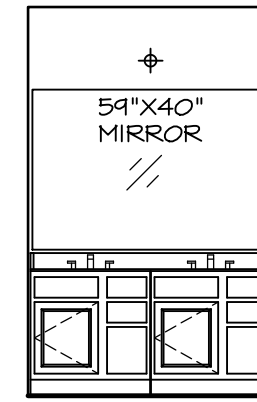
SECOND FLOOR PLAN
SCALE: 1/4" = 1'-0"

SHEET NO. A-8	MODEL PALERMO	SET NO. PALOO	VERSION 03
		DRAWN BY	DATE:
OPTION DESCRIPTION 60	DRAWING TITLE SECOND FLOOR PLAN	OPTION	
		DATE:	
SHEET NO. 60		 NVR, Inc. Architectural Services 5285 West... Frederick, MD 21703	
REVISIONS		<small>NVR, Inc., owner, expressly reserves its copyright in these plans. These plans are not to be reproduced, changed, copied, or otherwise used in any way without the written consent of NVR, Inc.</small>	
REV. NO.	DATE	DESCRIPTION	REMARKS
1	08/04/16	TH - DRAWING ALIGNMENT	



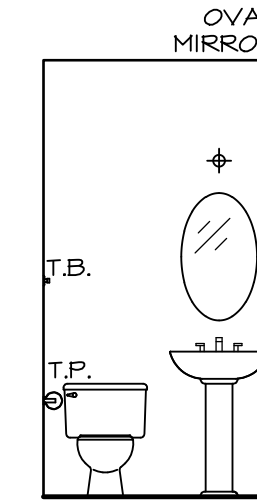
(2) V5DB3034H

J OWNER'S BATH
SCALE: 1/4" = 1'-0"



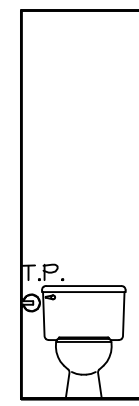
(2) V5DB30

E BATH #1
SCALE: 1/4" = 1'-0"

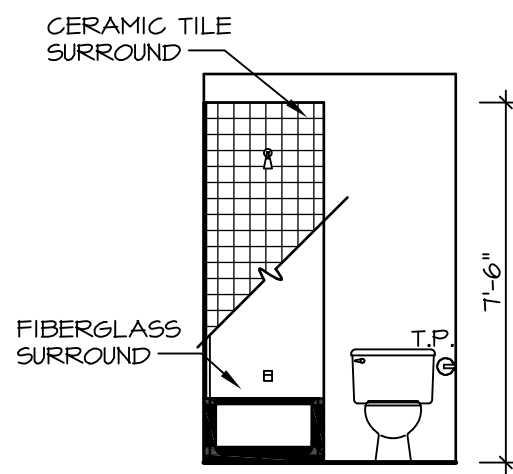


PEDESTAL SINK
(BY DIVISION)
WITH OVAL
MIRROR

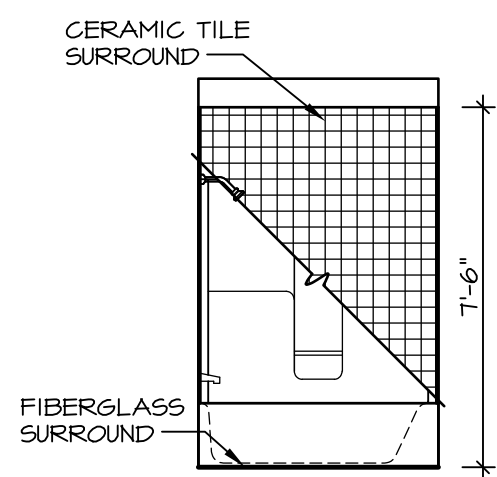
B POWDER ROOM
SCALE: 1/4" = 1'-0"



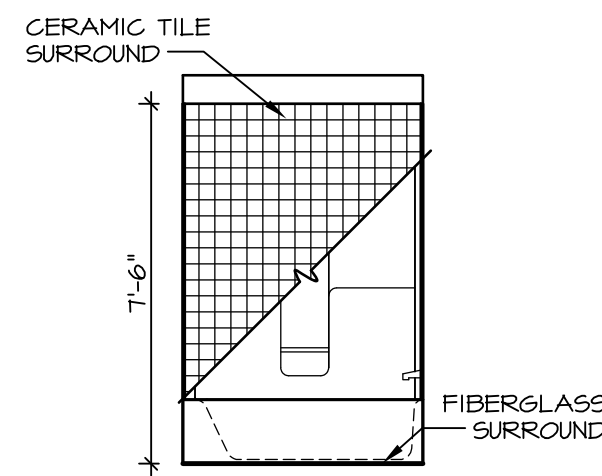
H OWNER'S BATH
SCALE: 1/4" = 1'-0"



G BATH #1
SCALE: 1/4" = 1'-0"



K OWNER'S BATH
SCALE: 1/4" = 1'-0"



F BATH #1
SCALE: 1/4" = 1'-0"

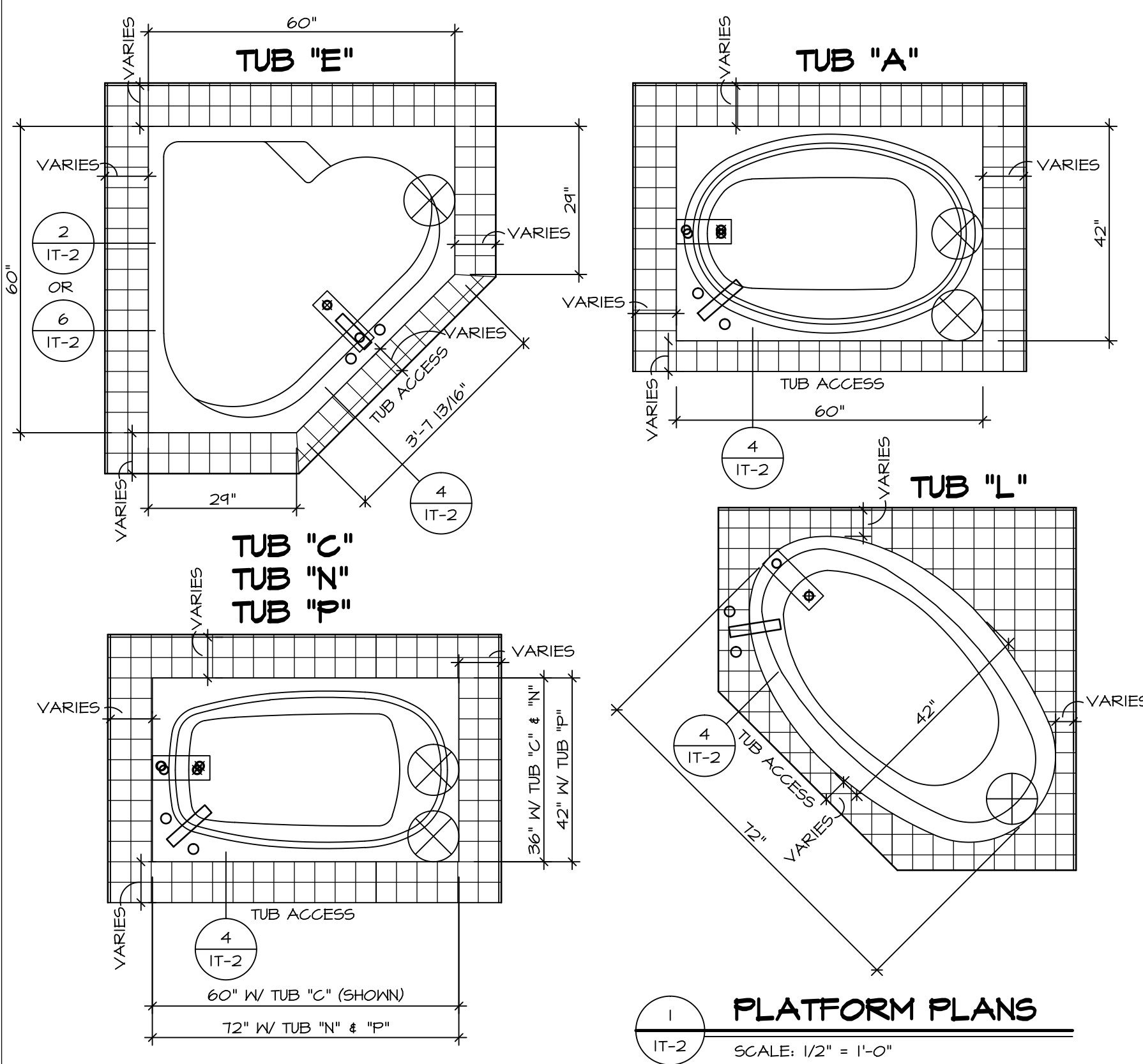
NOTES:

1. TEMPERED GLASS SHOWER ENCLOSURE WITH SWING DOOR OR OPTIONAL SLIDING DOOR BY DIVISION
2. TUB ACCESS PANELS PROVIDED AS NEEDED, ALL MATERIALS BY DIVISION
3. REFER TO SHEET IT-2 FOR TUB AND SHOWER DETAILS.
4. ALL V5DB24-42 DRAWERS TO BE SET ON RIGHT HAND.
5. BATH ELEVATIONS ARE SHOWN PER PLAN.

SHEET NO.	MODEL	SET NO.	VERSION	DRAWN BY	DATE:	OPTION	DESCRIPTION	REV. NO.	DATE	REMARKS
A-13	PALERMO	03	03				BATH ELEVATIONS	1	08/04/16	TM - DRAWING ALIGNMENT
72										

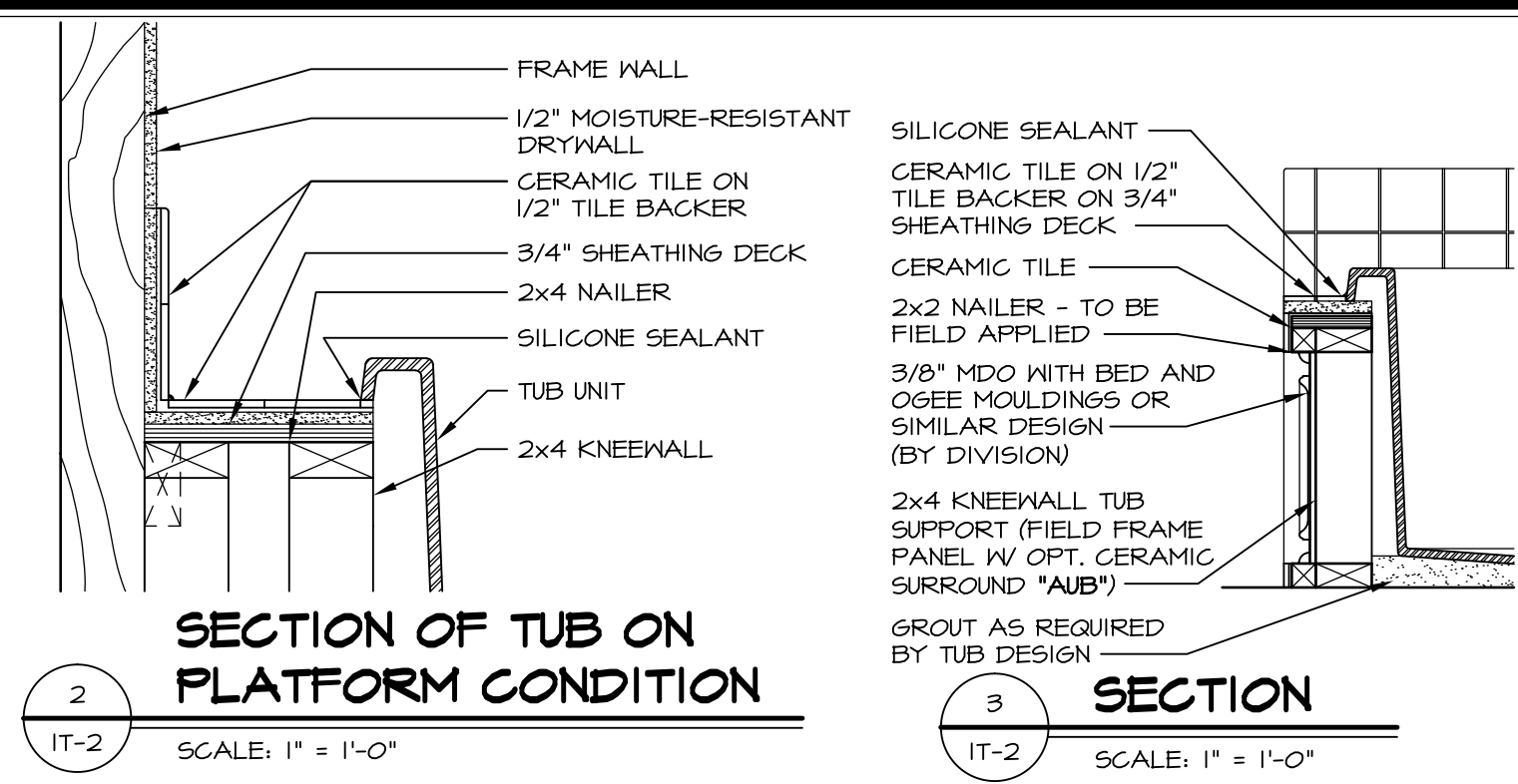
NVR
NVR, Inc.
Architectural Services
Architects
5285 Westover Lane, Suite 100
Frederick, MD 21703

C:\NVR\Solves\PALERMO_PAL00_03\DCY-YG-K99\371475\Sheets\1.ctb Specific\72 A-13_BATH_LS.dwg 03/15/17 - 4:05 am

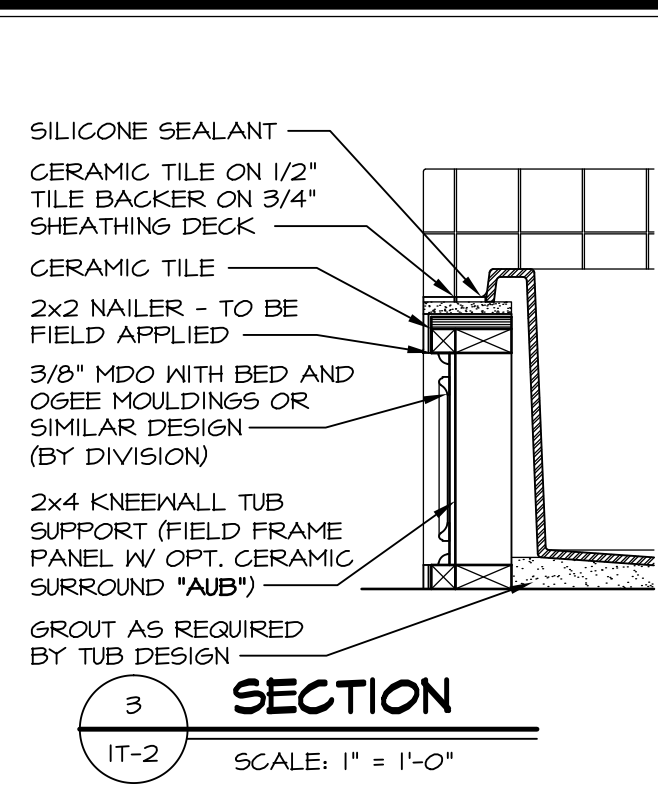


1 PLATFORM PLANS
SCALE: 1/2" = 1'-0"

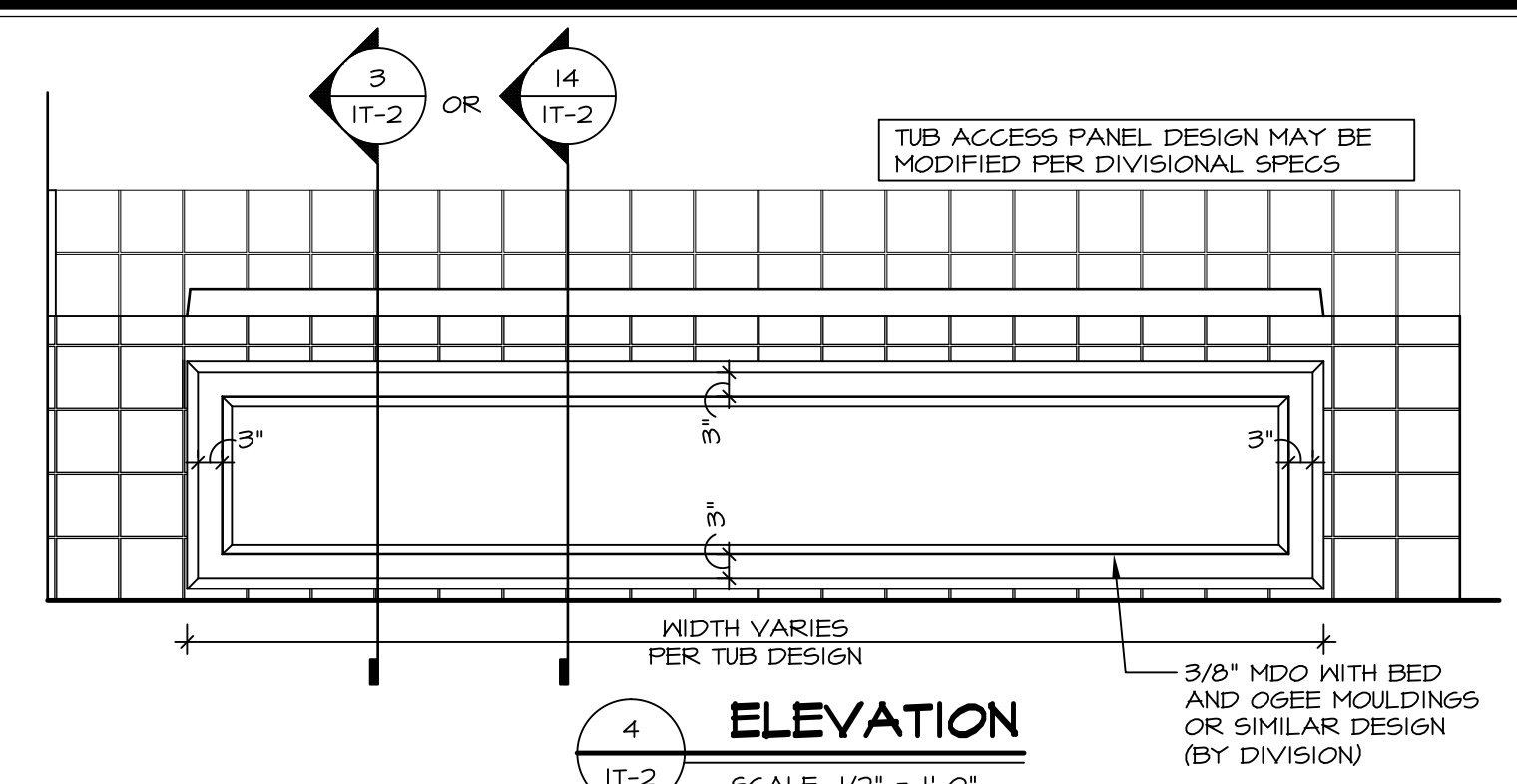
TUB	MANUF.	HEIGHT	WIDTH	LENGTH	TUB DECK PANEL HEIGHT
"A"	KOHLER/STERLING	18 3/4"	42"	60"	17 1/8"
"C"	KOHLER/STERLING	18 3/4"	36"	60"	17 1/8"
"E"	KOHLER/STERLING	19 1/2"	60"	60"	17 7/8"
"L"	KOHLER/STERLING	18 1/2"	42"	72"	16 7/8"
"N"	KOHLER/STERLING	18 3/4"	36"	72"	17 1/8"
"P"	KOHLER/STERLING	18 3/4"	42"	72"	17 1/8"



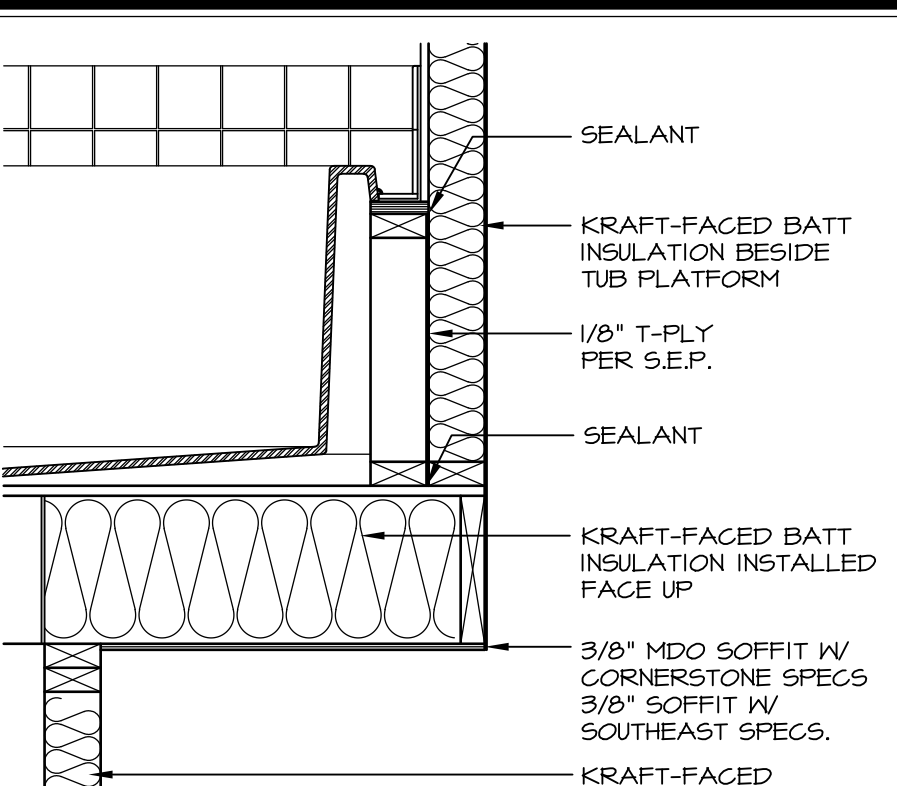
2 SECTION OF TUB ON PLATFORM CONDITION
SCALE: 1" = 1'-0"



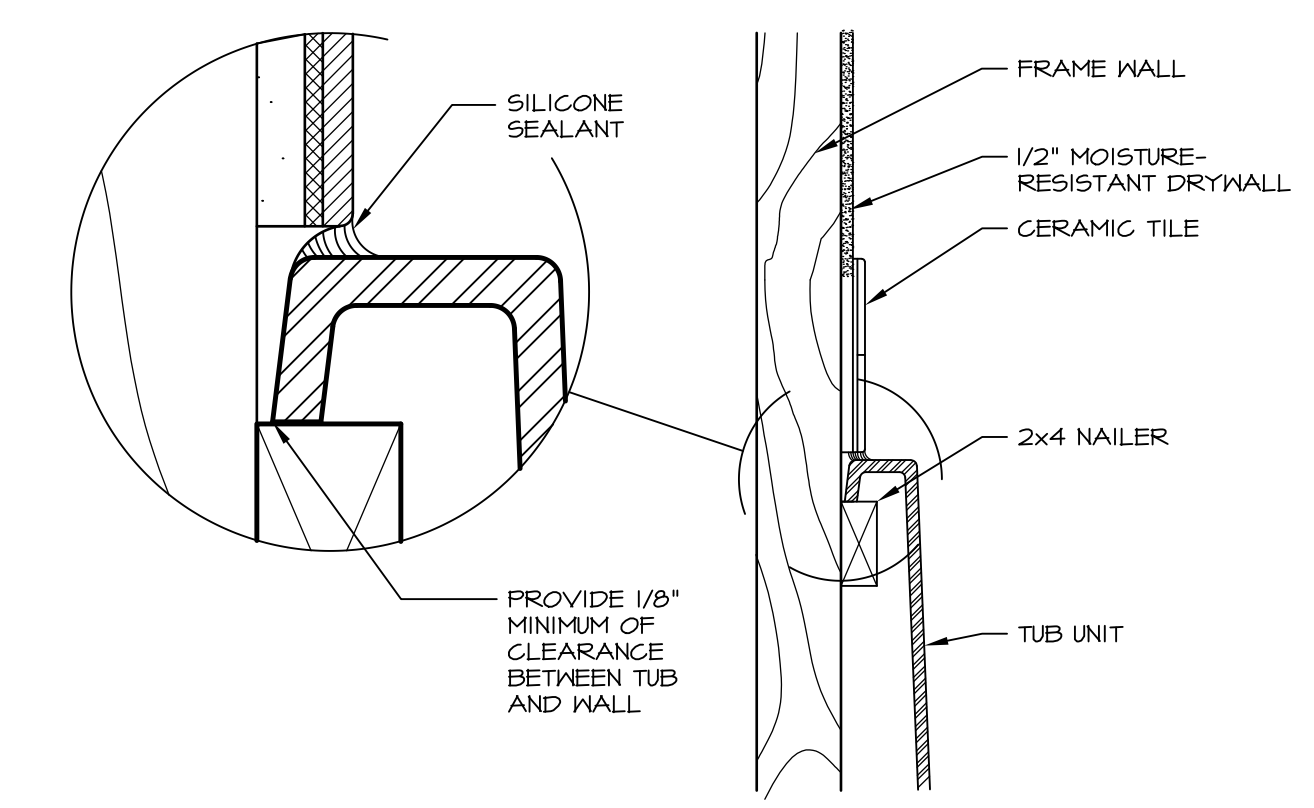
3 SECTION
SCALE: 1" = 1'-0"



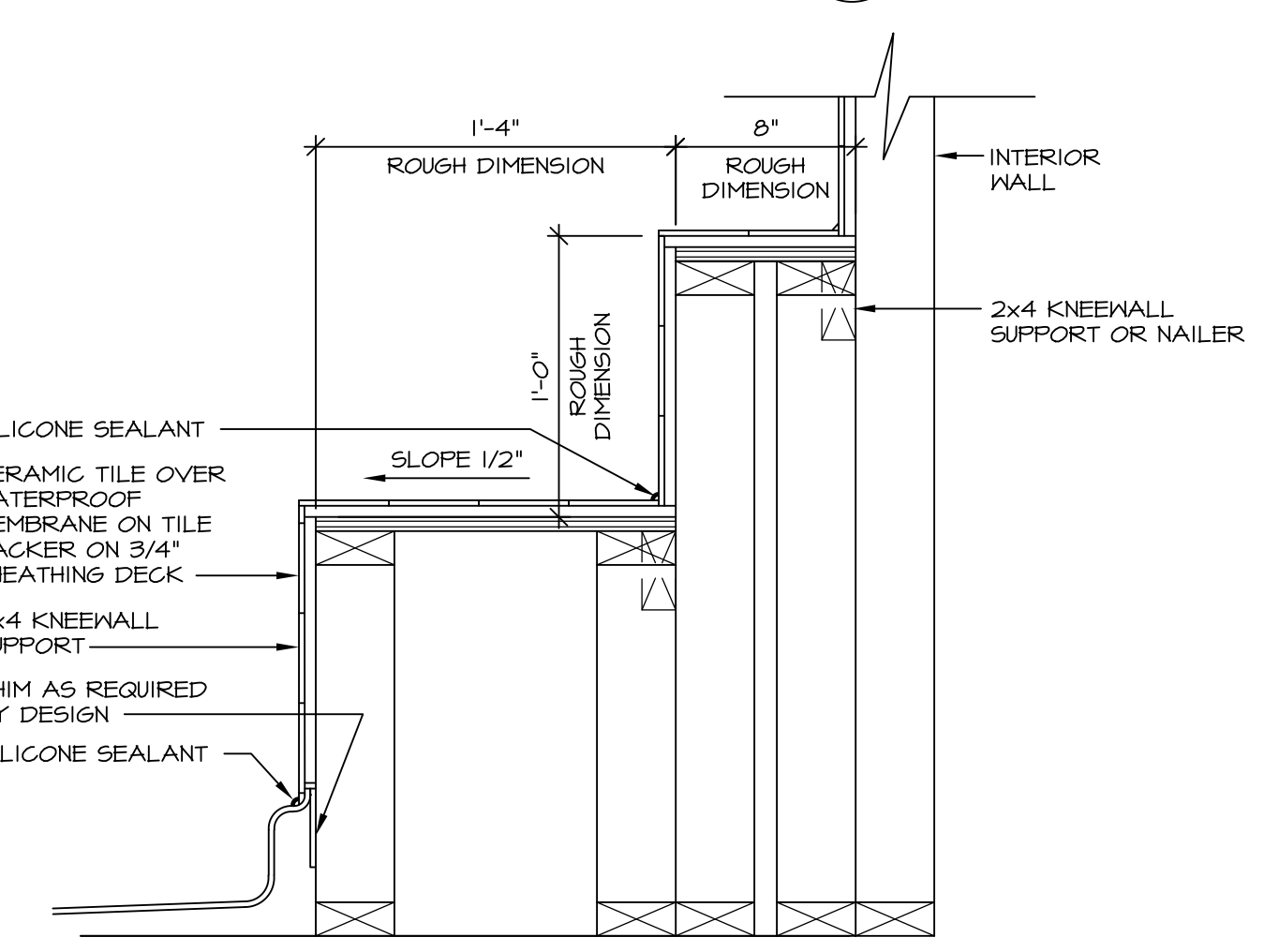
4 ELEVATION
SCALE: 1/2" = 1'-0"



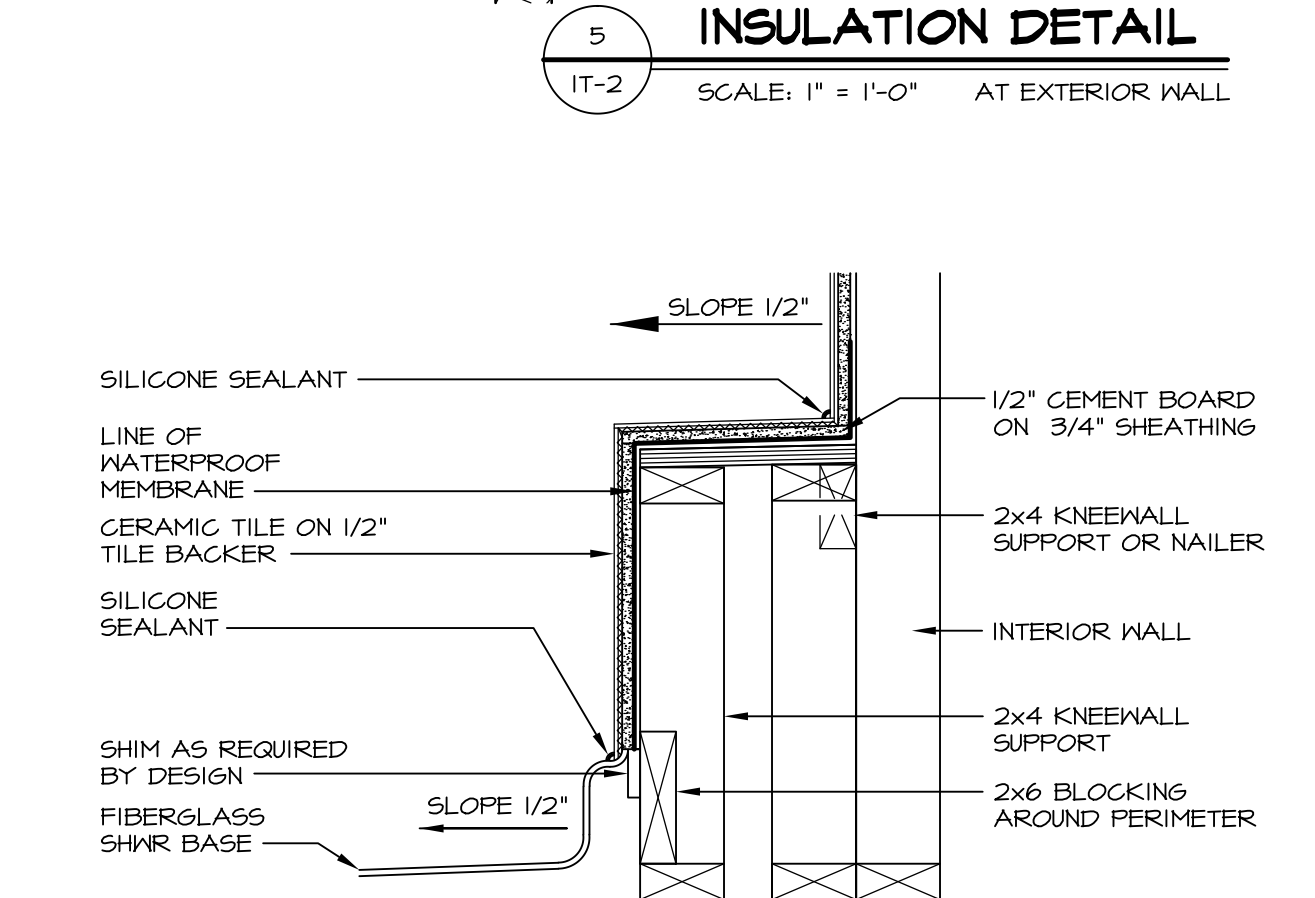
5 INSULATION DETAIL
SCALE: 1" = 1'-0" AT EXTERIOR WALL



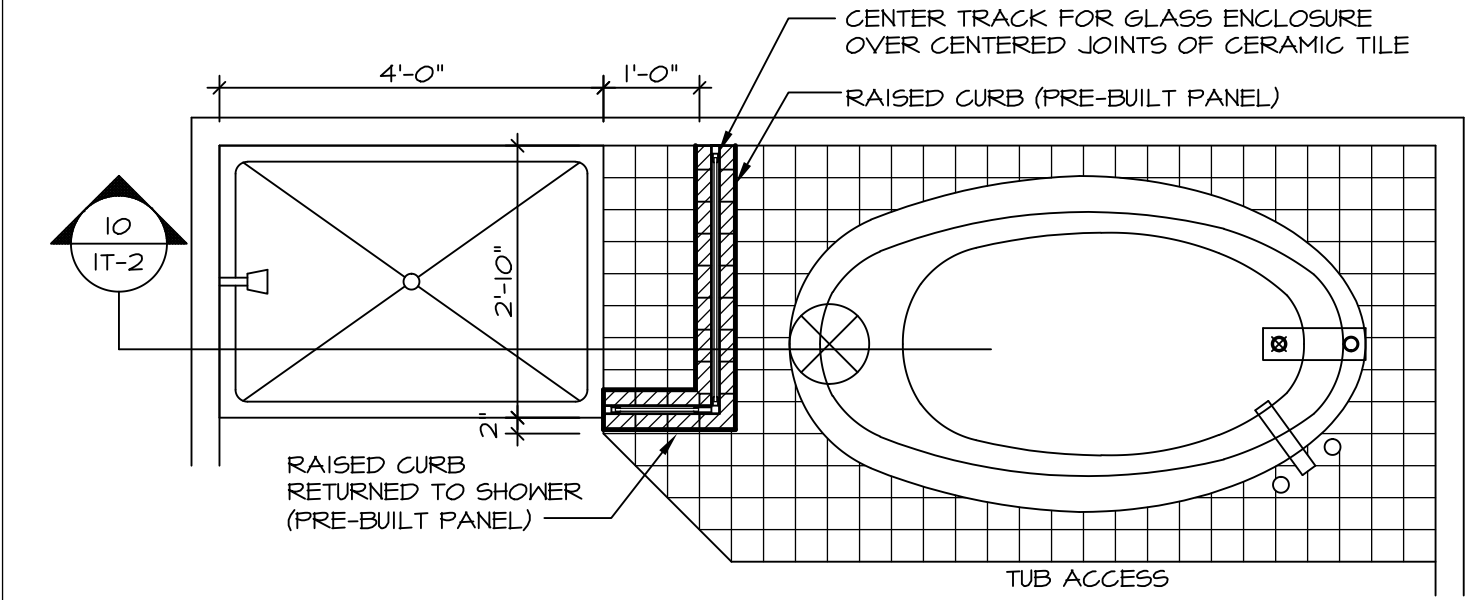
6 SECTION OF TUB TO WALL CONDITION
SCALE: 1 1/2" = 1'-0"



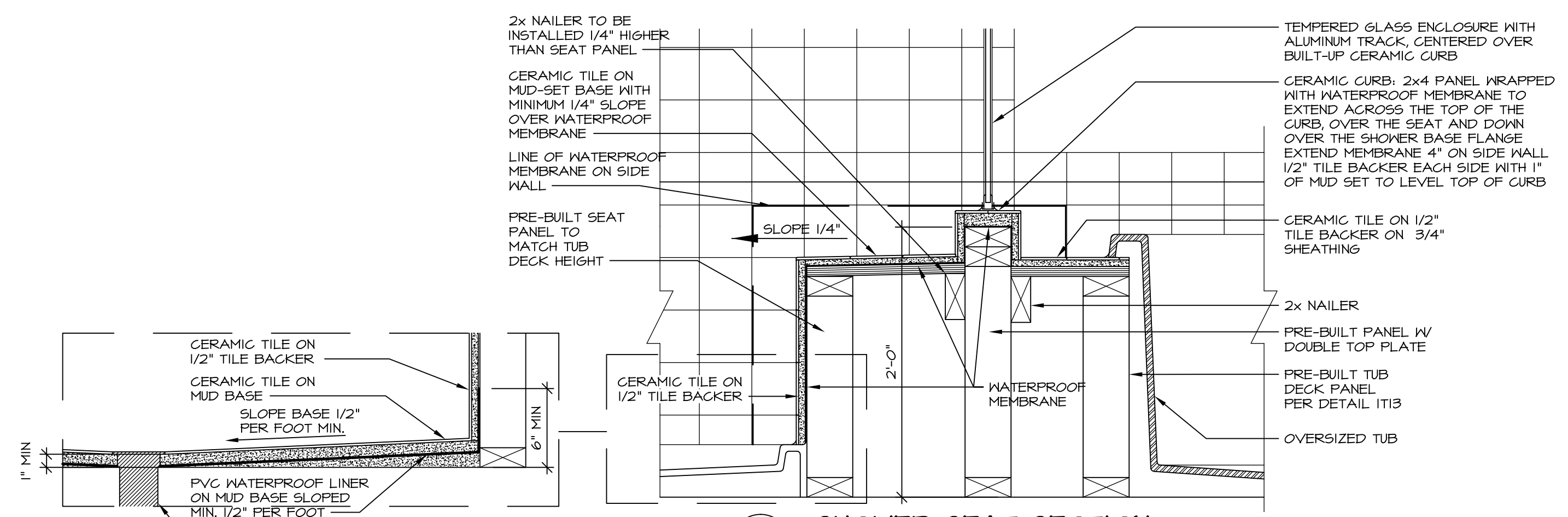
7 SECTION OF SHOWER SEAT AND SHELF
SCALE: 1 1/2" = 1'-0"



8 SECTION OF SHOWER SEAT
SCALE: 1-1/2" = 1'-0" FIBERGLASS SHOWER BASE



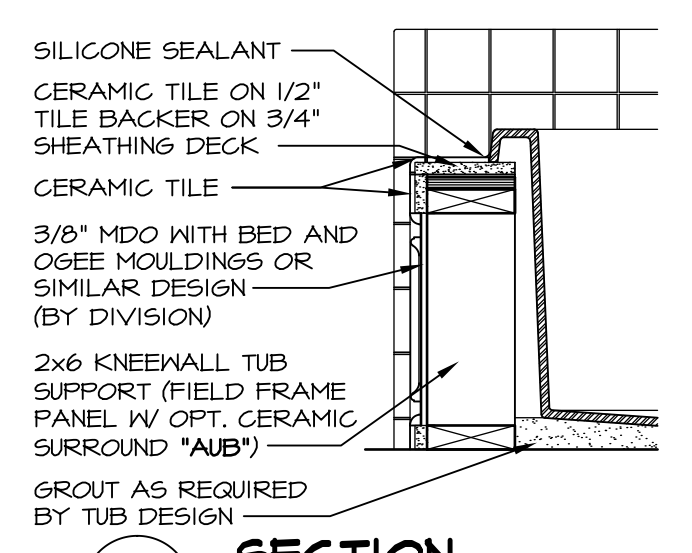
9 SHOWER SEAT PLAN / DETAIL
SCALE: 1/2" = 1'-0"



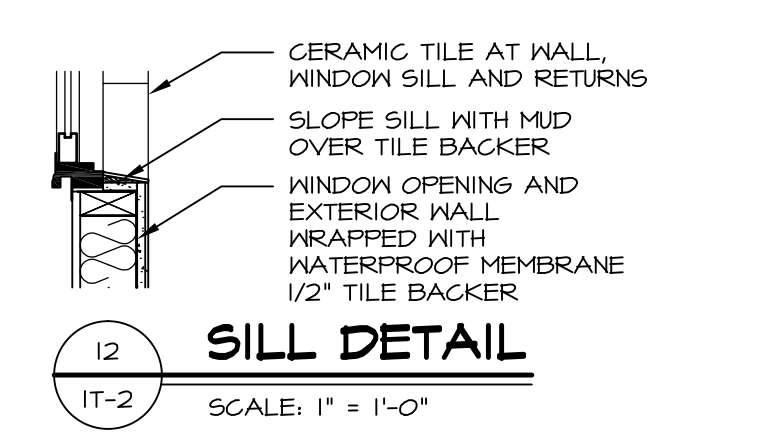
10 SHOWER SEAT SECTION
SCALE: 1-1/2" = 1'-0"



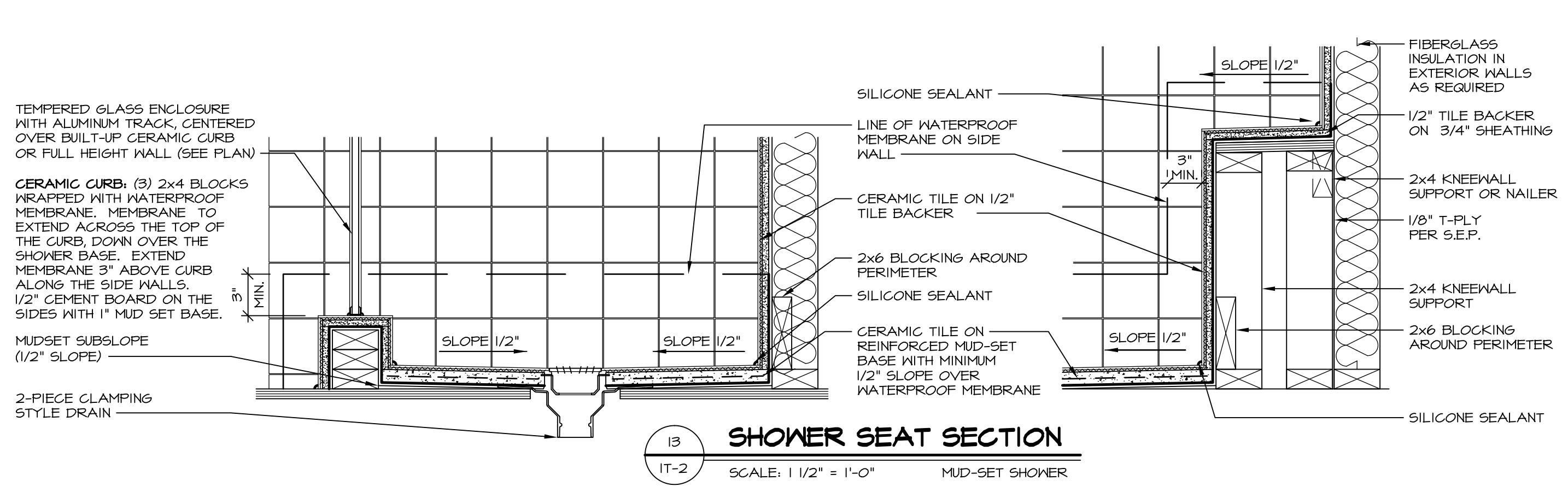
11 ALTERNATE SHOWER PAN DETAIL



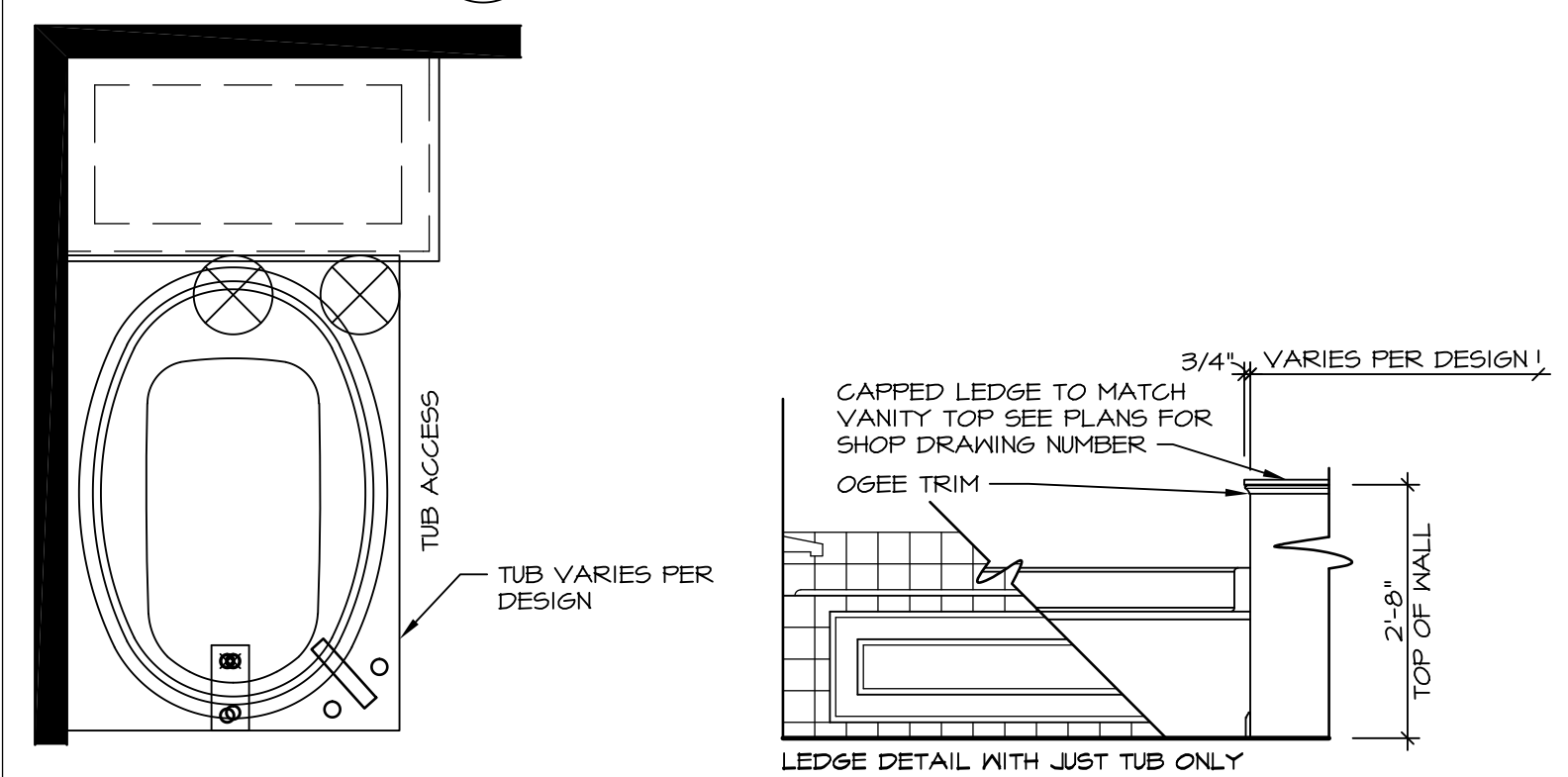
14 SECTION
SCALE: 1" = 1'-0"



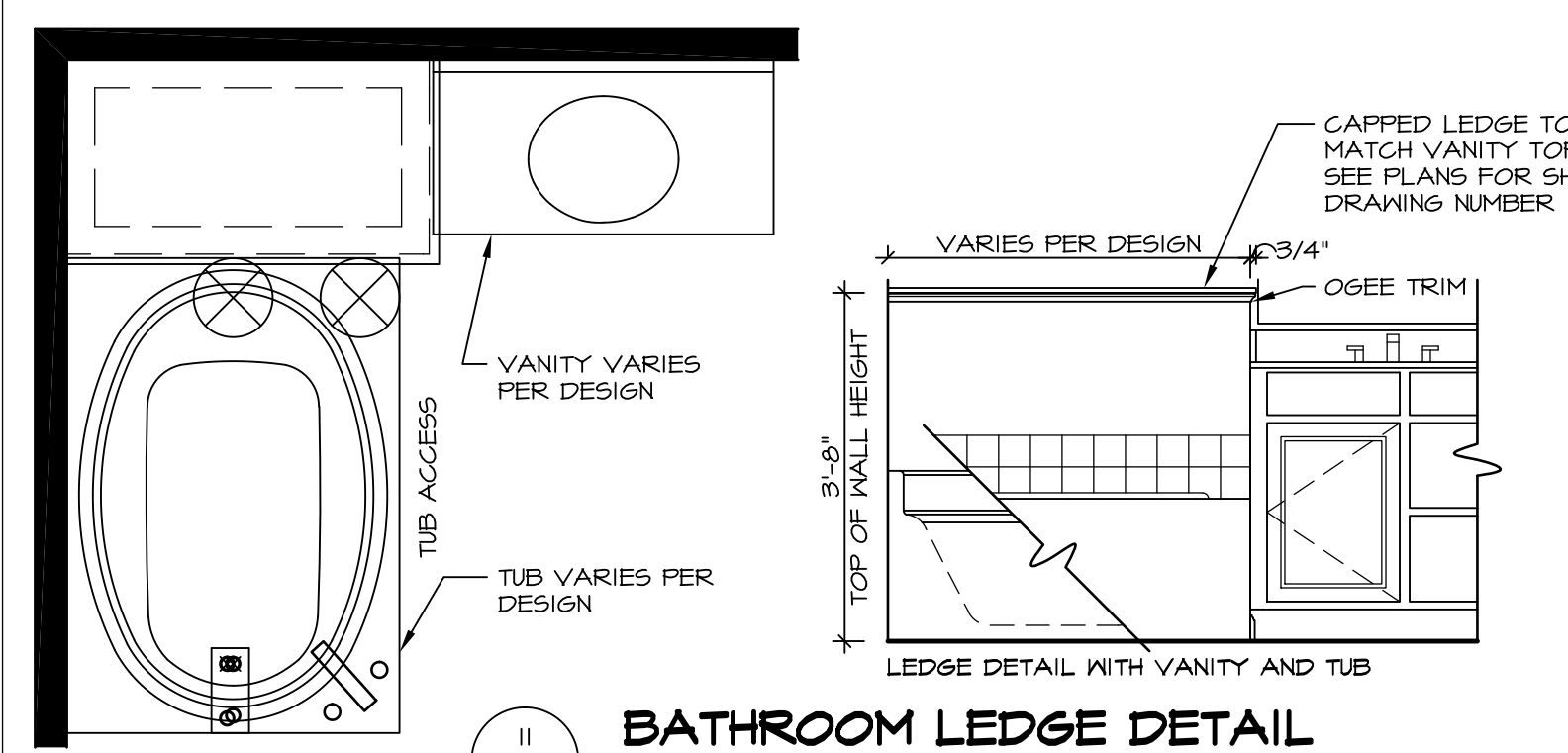
12 SILL DETAIL
SCALE: 1" = 1'-0"



13 SHOWER SEAT SECTION
SCALE: 1 1/2" = 1'-0" MUD-SET SHOWER



11 BATHROOM LEDGE DETAIL
SCALE: 1/2" = 1'-0"



12 BATHROOM LEDGE DETAIL
SCALE: 1/2" = 1'-0"

REMARKS

REV. NO. DATE

1 11/13/16

2 11/13/16

3 11/13/16

4 11/13/16

5 11/13/16

6 11/13/16

7 11/13/16

8 11/13/16

9 11/13/16

10 11/13/16

11 11/13/16

12 11/13/16

13 11/13/16

14 11/13/16

15 11/13/16

16 11/13/16

17 11/13/16

18 11/13/16

19 11/13/16

20 11/13/16

21 11/13/16

22 11/13/16

23 11/13/16

24 11/13/16

25 11/13/16

26 11/13/16

27 11/13/16

28 11/13/16

29 11/13/16

30 11/13/16

31 11/13/16

32 11/13/16

33 11/13/16

34 11/13/16

35 11/13/16

36 11/13/16

37 11/13/16

38 11/13/16

39 11/13/16

40 11/13/16

41 11/13/16

42 11/13/16

43 11/13/16

44 11/13/16

45 11/13/16

46 11/13/16

47 11/13/16

48 11/13/16

49 11/13/16

50 11/13/16

51 11/13/16

52 11/13/16

53 11/13/16

54 11/13/16

55 11/13/16

56 11/13/16

57 11/13/16

58 11/13/16

59 11/13/16

60 11/13/16

61 11/13/16

62 11/13/16

63 11/13/16

64 11/13/16

65 11/13/16

66 11/13/16

67 11/13/16

68 11/13/16

69 11/13/16

70 11/13/16

71 11/13/16

72 11/13/16

73 11/13/16

74 11/13/16

75 11/13/16

76 11/13/16

77 11/13/16

78 11/13/16

79 11/13/16

80 11/13/16

81 11/13/16

82 11/13/16

83 11/13/16

84 11/13/16

85 11/13/16

86 11/13/16

87 11/13/16

88 11/13/16

89 11/13/16

90 11/13/16

91 11/13/16

92 11/13/16

93 11/13/16

94 11/13/16

95 11/13/16

96 11/13/16

97 11/13/16

98 11/13/16

99 11/13/16

100 11/13/16

101 11/13/16

102 11/13/16

103 11/13/16

104 11/13/16

105 11/13/16

106 11/13/16

107 11/13/16

108 11/13/16

109 11/13/16

110 11/13/16

111 11/13/16

112 11/13/16

113 11/13/16

114 11/13/16

115 11/13/16

116 11/13/16

117 11/13/16

118 11/13/16

119 11/13/16

120 11/13/16

121 11/13/16

122 11/13/16

123 11/13/16

124 11/13/16

125 11/13/16

126 11/13/16

127 11/13/16

128 11/13/16

129 11/13/16

130 11/13/16

131 11/13/16

132 11/13/16

133 11/13/16

134 11/13/16

135 11/13/16

136 11/13/16

137 11/13/16

138 11/13/16

139 11/13/16

140 11/13/16

141 11/13/16

142 11/13/16

143 11/13/16

144 11/13/16

145 11/13/16

146 11/13/16

147 11/13/16

148 11/13/16

149 11/13/16

150 11/13/16

151 11/13/16

152 11/13/16

153 11/13/16

154 11/13/16

155 11/13/16

156 11/13/16

157 11/13/16

158 11/13/16

159 11/13/16

160 11/13/16

161 11/13/16

162 11/13/16

163 11/13/16

164 11/13/16

165 11/13/16

166 11/13/16

167 11/13/16

168 11/13/16

169 11/13/16

170 11/13/16

171 11/13/16

172 11/13/16

173 11/13/16

174 11/13/16

175 11/13/16

176 11/13/16

177 11/13/16

178 11/13/16

179 11/13/16

180 11/13/16

181 11/13/16

182 11/13/16

183 11/13/16

184 11/13/16

185 11/13/16

186 11/13/16

187 11/13/16

188 11/13/16

189 11/13/16

190 11/13/16

191 11/13/16

192 11/13/16

193 11/13/16

194 11/13/16

195 11/13/16

196 11/13/16

197 11/13/16

198 11/13/16

199 11/13/16

200 11/13/16

201 11/13/16

202 11/13/16

203 11/13/16

204 11/13/16

205 11/13/16

206 11/13/16

207 11/13/16

208 11/13/16

209 11/13/16

210 11/13/16

211 11/13/16

212 11/13/16

213 11/13/16

214 11/13/16

215 11/13/16

216 11/13/16

217 11/13/16

218 11/13/16

219 11/13/16

220 11/13/16

221 11/13/16

222 11/13/16

223 11/13/16

224 11/13/16

225 11/13/16

226 11/13/16

227 11/13/16

228 11/13/16

229 11/13/16

230 11/13/16

231 11/13/16

232 11/13/16

233 11/13/16

234 11/13/16

235 11/13/16

236 11/13/16

237 11/13/16

238 11/13/16

239 11/13/16

240 11/13/16

241 11/13/16

242 11/13/16

243 11/13/16

244 11/13/16

245 11/13/16

246 11/13/16

247 11/13/16

248 11/13/16

249 11/13/16

250 11/13/16

251 11/13/16

252 11/13/16

253 11/13/16

254 11/13/16

255 11/13/16

256 11/13/16

257 11/13/16

258 11/13/16

259 11/13/16

260 11/13/16

261 11/13/16

262 11/13/16

263 11/13/16

264 11/13/16

265 11/13/16

266 11/13/16

267 11/13/16

268 11/13/16

269 11/13/16

270 11/13/16

271 11/13/16

272 11/13/16

273 11/13/16

274 11/13/16

275 11/13/16

276 11/13/16

277 11/13/16

278 11/13/16

279 11/13/16

280 11/13/16

281 11/13/16

282 11/13/16

283 11/13/16

284 11/13/16

285 11/13/16

286 11/13/16

287 11/13/16

288 11/13/16

289 11/13/16

290 11/13/16

291 11/13/16

292 11/13/16

293 11/13/16

294 11/13/16

295 11/13/16

296 11/13/16

297 11/13/16

298 11/13/16

299 11/13/16

300 11/13/16

301 11/13/16

302 11/13/16

303 11/13/16

304 11/13/16

305 11/13/16

306 11/13/16

307 11/13/16

308 11/13/16

309 11/13/16

310 11/13/16

311 11/13/16

312 11/13/16

313 11/13/16

314 11/13/16

315 11/13/16

316 11/13/16

317 11/13/16

318 11/13/16

319 11/13/16

320 11/13/16

321 11/13/16

322 11/13/16

323 11/13/16

324 11/13/16

325 11/13/16

326 11/13/16

327 11/13/16

328 11/13/16

329 11/13/16

330 11/13/16

331 11/13/16

332 11/13/16

333 11/13/16

334 11/13/16

335 11/13/16

336 11/13/16

337 11/13/16

338 11/13/16

339 11/13/16

340 11/13/16

341 11/13/16

342 11/13/16

343 11/13/16

344 11/13/16

345 11/13/16

346 11/13/16

347 11/13/16

348 11/13/16

349 11/13/16

350 11/13/16

351 11/13/16

352 11/13/16

353 11/13/16

354 11/13/16

355 11/13/16

356 11/13/16

357 11/13/16

358 11/13/16

359 11/13/16

360 11/13/16

361 11/13/16

362 11/13/16

363 11/13/16

364 11/13/16

365 11/13/16

366 11/13/16

367 11/13/16

368 11/13/16

369 11/13/16

370 11/13/16

371 11/13/16

372 11/13/16

373 11/13/16

374 11/13/16

375 11/13/16

376 11/13/16

377 11/13/16

378 11/13/16

379 11/13/16

380 11/13/16

381 11/13/16

382 11/13/16

383 11/13/16

384 11/13/16

385 11/13/16

386 11/13/16

387 11/13/16

388 11/13/16

389 11/13/16

390 11/13/16

391 11/13/16

392 11/13/16

393 11/13/16

394 11/13/16

395 11/13/16

396 11/13/16

397 11/13/16

398 11/13/16

399 11/13/16

400 11/13/16

401 11/13/16

402 11/13/16

403 11/13/16

404 11/13/16

405 11/13/16

406 11/13/16

407 11/13/16

408 11/13/16

409 11/13/16

410 11/13/16

411 11/13/16

412 11/13/16

413 11/13/16

414 11/13/16

415 11/13/16

416 11/13/16

417 11/13/16

418 11/13/16

419 11/13/16

420 11/13/16

421 11/13/16

422 11/13/16

423 11/13/16

424 11/13/16

425 11/13/16

426 11/13/16

427 11/13/16

428 11/13/16

429 11/13/16

430 11/13/16

431 11/13/16

432 11/13/16

433 11/13/16

434 11/13/16

435 11/13/16

436 11/13/16

437 11/13/16

438 11/13/16

439 11/13/16

440 11/13/16

441 11/13/16

442 11/13/16

443 11/13/16

444 11/13/16

445 11/13/16

446 11/13/16

447 11/13/16

448 11/13/16

449 11/13/16

450 11/13/16

451 11/13/16

452 11/13/16

453 11/13/16

454 11/13/16

455 11/13/16

456 11/13/16

457 11/13/16

458 11/13/16

459 11/13/16

460 11/13/16

461 11/13/16

462 11/13/16

463 11/13/16

464 11/13/16

465 11/13/16

466 11/13/16

467 11/13/16

468 11/13/16

469 11/13/16

470 11/13/16

471 11/13/16

472 11/13/16

473 11/13/16

474 11/13/16

475 11/13/16

476 11/13/16

477 11/13/16

478 11/13/16

479 11/13/16

480 11/13/16

481 11/13/16

482 11/13/16

483 11/13/16

484 11/13/16

485 11/13/16

486 11/13/16

487 11/13/16

488 11/13/16

489 11/13/16

490 11/13/16

491 11/13/16

492 11/13/16

493 11/13/16

494 11/13/16

495 11/13/16

496 11/13/16

497 11/13/16

498 11/13/16

499 11/13/16

500 11/13/16

501 11/13/16

502 11/13/16

503 11/13/16

504 11/13/16

505 11/13/16

506 11/13/16

507 11/13/16

508 11/13/16

509 11/13/16

510 11/13/16

511 11/13/16

512 11/13/16

513 11/13/16

514 11/13/16

515 11/13/16

516 11/13/16

517 11/13/16

518 11/13/16

519 11/13/16

520 11/13/16

521 11/13/16

522 11/13/16

523 11/13/16

524 11/13/16