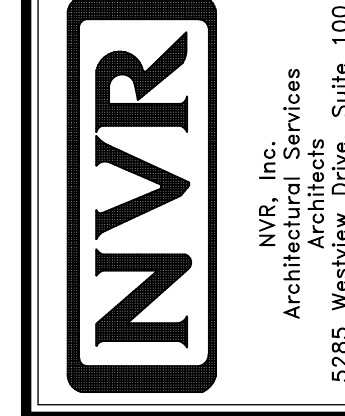


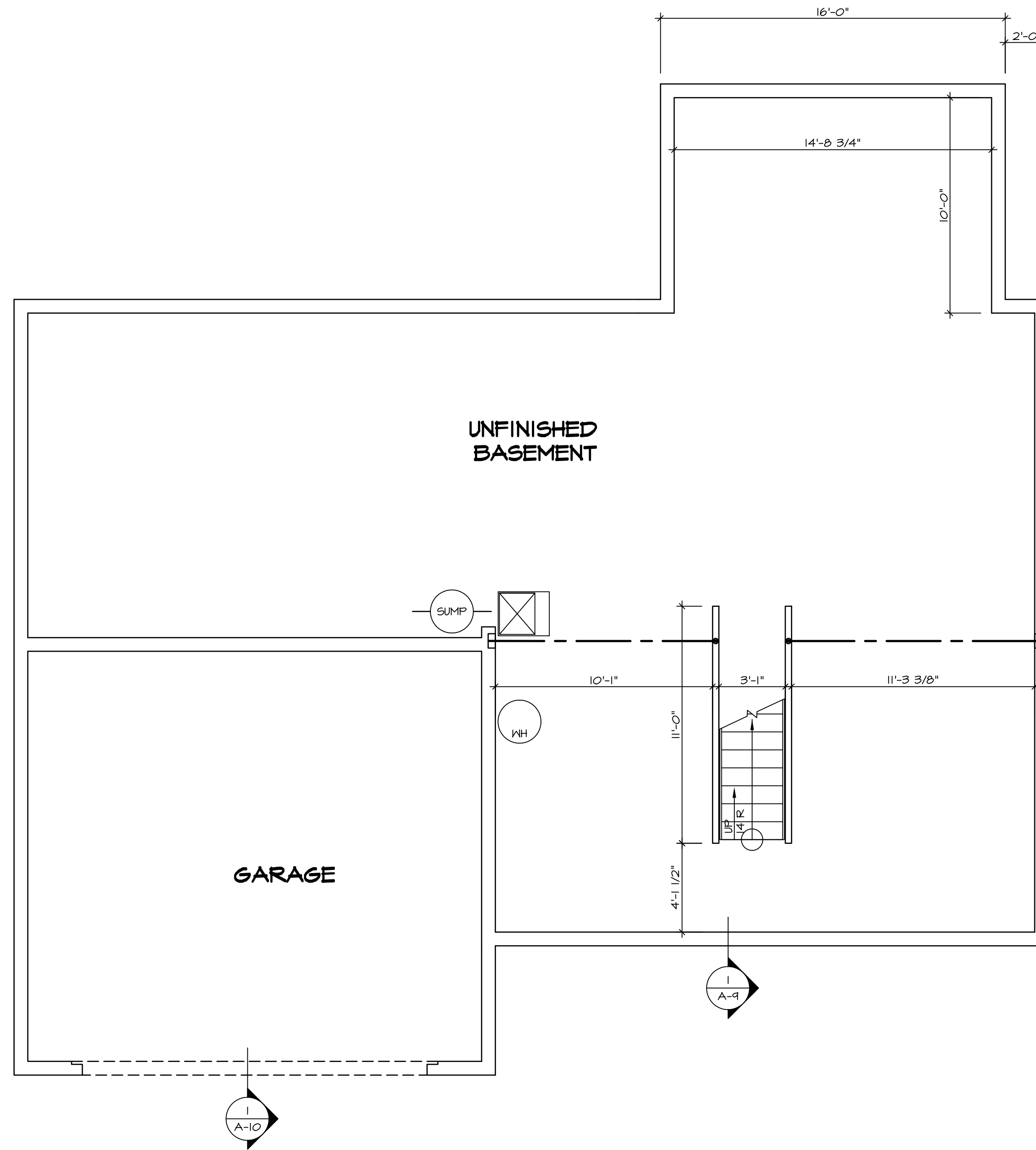
PLUMBING PLAN
 SCALE: 1/4" = 1'-0"

SHEET NO. A-5	MODEL PALERMO	SET NO. PALOO
OPTION DESCRIPTION 48	VERSION 03	DRAWN BY PALERMO
	DATE:	OPTION



NVR, Inc., owner, expressly reserves its copyright in these plans. These plans are not to be reproduced, changed, copied, or otherwise used in any way without the prior written consent of NVR, Inc.

REV. NO.	DATE	REMARKS



LEGEND	
	BEARING WALL
	NON BEARING WALL
	INDICATES BEARING FROM POINT-LOAD ABOVE
	JACKS
	BEAM/HEADER
	PAD FOOTING
	STEEL COLUMN
	PORTAL FRAME
	JOIST/TRUSS
	LVL
	ENGINEERING PAGE NUMBER

SEE FC DETAILS FOR FRAMING CONNECTORS

- FLOOR PLAN NOTES**
- ALL HEADERS ARE (2) 2x6 w/ 2x4 WALLS OR (3) 2x6 w/ 2x6 WALLS, UNLESS OTHERWISE NOTED.
 - ALL HEADERS TO HAVE (1) 2x4 OR 2x6 JACK EACH END, UNLESS OTHERWISE NOTED.
 - ALL EXTERIOR WALLS TO BE 4" AND ALL INTERIOR WALLS TO BE 3 1/2", UNLESS OTHERWISE NOTED.
 - HATCHED AREAS INDICATE DROPPED CEILINGS. ALL DROPPED CEILINGS ARE 12" UNLESS OTHERWISE NOTED.
 - SEE "BRACED WALL PANEL DETAIL SHEET" FOR SPECIAL WALL FRAMING LOCATIONS AND HEADER SIZES, IF APPLICABLE.
 - SEE STANDARD DETAIL CATEGORY "IT" SHEET(S) FOR INTERIOR TRIM DETAILS.
 - SEE ARCHITECTURAL DETAIL SHEET "AD" FOR HOUSE SPECIFIC INTERIOR TRIM OPTION TABLE.
 - ALL WINDOWS HAVE 7'-0 1/2" HEADER HEIGHT UNLESS OTHERWISE NOTED.
 - ALL CASED OPENINGS AT T-11, UNLESS OTHERWISE NOTED.

- GYPSUM NOTES**
- AT GARAGE:
GYPSUM BOARD AT COMMON WALLS, CEILING, BEAM WRAPS AND SUPPORTS PER STANDARD DETAIL FA-1(b) FIRE ASSEMBLIES OR AS REQUIRED BY LOCAL CODE.
- AT STAIRS:
1/2" GYPSUM BOARD AT UNDERSIDE OF STAIRS AND WALLS IN CLOSET

BASEMENT FLOOR PLAN
SCALE: 1/4" = 1'-0"

SHEET NO.	MODEL	SET NO.	DATE	REV. NO.	DATE	REMARKS
A-6	PALERMO	03	08/07/17	1		
51						

NVR, Inc. owner, expressly reserves its copyright in these plans. These plans are not to be reproduced, changed, adapted, or otherwise used in any way without the prior written consent of NVR, Inc.

NVR
 NVR, Inc.
 Architectural Services
 Architects
 5285 Westpark Drive, Suite 100
 Frederick, MD 21703

SET NO. PALOO
 VERSION 03
 DRAWN BY
 DATE:
 OPTION

DRAWING TITLE
 BASEMENT FLOOR PLAN
 OPTION DESCRIPTION

C:\NVR_Solves\PALERMO_PALOO_03\DCY-YG-K393\501157\Sheets\1.dwg
 Specific\51 A-6 BSMT_LS.dwg 08/07/17 - 6:58 am

FIRST FLOOR JACK SCHEDULE				
IDENTIFIER	DESCRIPTION	OPTIONS	ENG. NUM.	REMARKS
J101	JACK - (2) 2X4 SPF STUD GRADE		1072	
J102	JACK - (2) 2X4 SPF STUD GRADE		1072	
J106	JACK - (2) 2X4 SPF STUD GRADE		1012	
J107	JACK - (2) 2X4 SPF STUD GRADE		1012	
J108	JACK - (2) 2X4 SPF STUD GRADE		1012	
J120	JACK - (4) 2X6 SPF STUD GRADE	MAA	1014	
J121	JACK - (3) 2X6 SPF STUD GRADE	MAA	1014	FIELD INSTALLED
J122	JACK - (3) 2X4 SPF STUD GRADE	SRH	1040	
J123	JACK - (3) 2X4 SPF STUD GRADE	SRH	1044	
J150	JACK - (3) 2X4 SPF STUD GRADE	GCF	1044	
J151	JACK - (3) 2X4 SPF STUD GRADE	GCF	1044	
J152	JACK - (2) 2X4 SPF STUD GRADE	GCF, MAV	1044, 1131	CRIPPLES
J153	JACK - (2) 2X4 SPF STUD GRADE	GCF, MAV	1044, 1131	CRIPPLES
J154	JACK - (2) 2X4 SPF STUD GRADE	GCF	1122	
J155	JACK - (2) 2X4 SPF STUD GRADE	GCF	1122	
J156	JACK - (2) 2X4 SPF STUD GRADE	GCF	1105	
J157	JACK - (2) 2X4 SPF#1	ELE	1021	
J167	JACK - (2) 2X4 SPF STUD GRADE	LGG	1082	
J168	JACK - (2) 2X4 SPF STUD GRADE	LGG	1082	
J170	JACK - (2) 2X4 SPF#1	ELE		

LVL PLY TO PLY FASTENING SCHEDULE:

1A - (2) FLY UP TO AND INCLUDING 11 7/8" TALL; FASTEN FLIES W/ (2) ROWS 16D NAILS AT 12" O.C.
 2A - (2) FLY 14" TO AND INCLUDING 18" TALL (INCLUSIVE); FASTEN FLIES W/ (3) ROWS 16D NAILS AT 12" O.C.
 3A - (2) FLY 20" TALL AND OVER; FASTEN FLIES W/ (4) ROWS 16D NAILS AT 12" O.C.
 4A - (3) FLY UP TO AND INCLUDING 11 7/8" TALL; FASTEN FLIES W/ (2) ROWS 16D NAILS AT 12" O.C. FROM EACH SIDE
 5A - (3) FLY 14" TO AND INCLUDING 18" TALL (INCLUSIVE); FASTEN FLIES W/ (3) ROWS 16D NAILS AT 12" O.C. FROM EACH SIDE
 6A - (3) FLY 20" TALL AND OVER; FASTEN FLIES W/ (4) ROWS 16D NAILS AT 12" O.C. FROM EACH SIDE

FIRST FLOOR BEAM/HEADER SCHEDULE					
IDENTIFIER	DESCRIPTION	LENGTH	OPTIONS	ENG. NUM.	REMARKS
B101-3	LVL - 16	14'-4 1/2"	MAA	1014	5A, FIELD INSTALL
B105	BEAM STEEL - W12X40	22'-3 1/2"	ELE, MAV	1051, 1133	
B107-2	LVL - 14	17'-4"	MAV	1050, 1051	2A, FIELD INSTALL
PF104-2	EXT HEADER - 2X12 - 2 PLY	11'-4"	GCF	1054, 1148	2-PLY, FIELD INSTALL

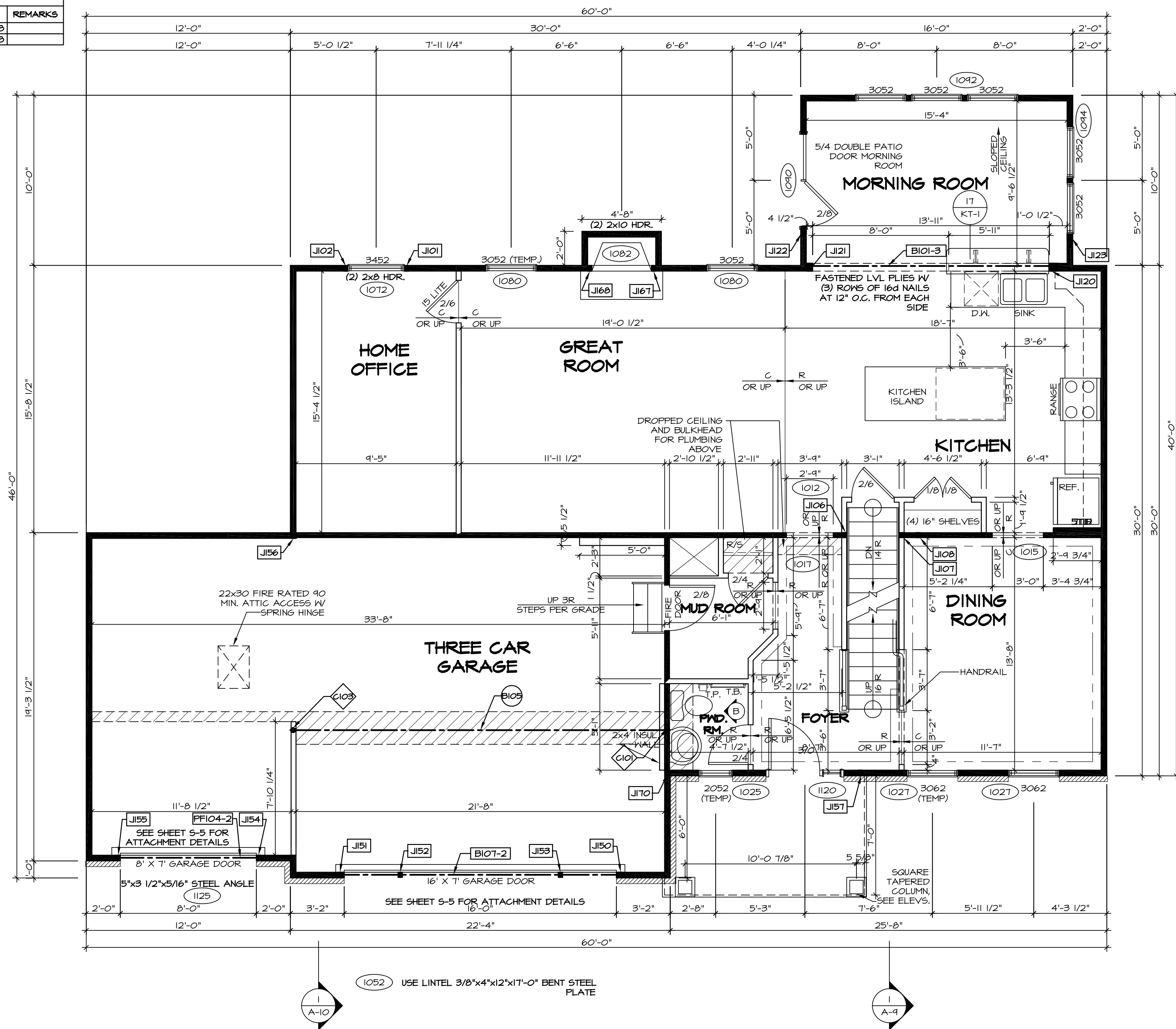
LEGEND	
	BEARING WALL
	NON BEARING WALL
	INDICATES BEARING FROM POINT-LOAD ABOVE
	JACKS
	BEAM/HEADER
	PAD FOOTING
	STEEL COLUMN
	PORTAL FRAME
	JOIST/TRUSS
	LVL
	ENGINEERING PAGE NUMBER

SEE FC DETAILS FOR FRAMING CONNECTORS

- FLOOR PLAN NOTES**
- ALL HEADERS ARE (2) 2x6 W/ 2x4 WALLS OR (3) 2x6 W/ 2x6 WALLS, UNLESS OTHERWISE NOTED.
 - ALL HEADERS TO HAVE (1) 2x4 OR 2x6 JACK EACH END, UNLESS OTHERWISE NOTED.
 - ALL EXTERIOR WALLS TO BE 4" AND ALL INTERIOR WALLS TO BE 3 1/2", UNLESS OTHERWISE NOTED.
 - HATCHED AREAS INDICATE DROPPED CEILINGS. ALL DROPPED CEILINGS ARE 12" UNLESS OTHERWISE NOTED.
 - SEE "BRACED WALL PANEL DETAIL SHEET" FOR SPECIAL WALL FRAMING LOCATIONS AND HEADER SIZES, IF APPLICABLE.
 - SEE STANDARD DETAIL CATEGORY "11" SHEET(S) FOR INTERIOR TRIM DETAILS.
 - SEE ARCHITECTURAL DETAIL SHEET "AD" FOR HOUSE SPECIFIC INTERIOR TRIM OPTION TABLE.
 - ALL WINDOWS HAVE 7'-0 1/2" HEADER HEIGHT UNLESS OTHERWISE NOTED.
 - ALL CASED OPENINGS AT 7'-11", UNLESS OTHERWISE NOTED.

- GYPSON NOTES**
- AT GARAGE:**
 GYPSUM BOARD AT COMMON WALLS, CEILING, BEAM WRAPS AND SUPPORTS PER STANDARD DETAIL FA-106) FIRE ASSEMBLIES OR AS REQUIRED BY LOCAL CODE.
- AT STAIRS:**
 1/2" GYPSUM BOARD AT UNDERSIDE OF STAIRS AND WALLS IN CLOSET

STEEL COLUMN SCHEDULE					
IDENTIFIER	STYLE	HEIGHT	OPTIONS	ENG. NUM.	REMARKS
C101	STANCHION - 3 IN SCHED 40	9'-0 11/16"	FBA	1051, 1133, 1128	
C103	STANCHION - 3 IN SCHED 40	9'-0 11/16"	FBA	1051, 1133, 1128	



FIRST FLOOR PLAN
 SCALE: 1/4" = 1'-0"

SHEET NO. A-7	MODEL PALERMO	DRAWING TITLE FIRST FLOOR PLAN	OPTION DESCRIPTION	DATE: OPTION	DRAWN BY: DATE:	VERSION 03	SET NO. PALOO	REVISIONS	REV. NO.	DATE	DESCRIPTION
										08/07/17	15A

1. 08/07/17 - DRAWING ALIGNMENT
 2. 07/27/17 SLS - T-PLY CONVERSION PROJECT

NVR, Inc., owner, expressly reserves its copyright in these plans. These plans are not to be reproduced, changed, altered, or otherwise used in any way without the written consent of NVR, Inc.

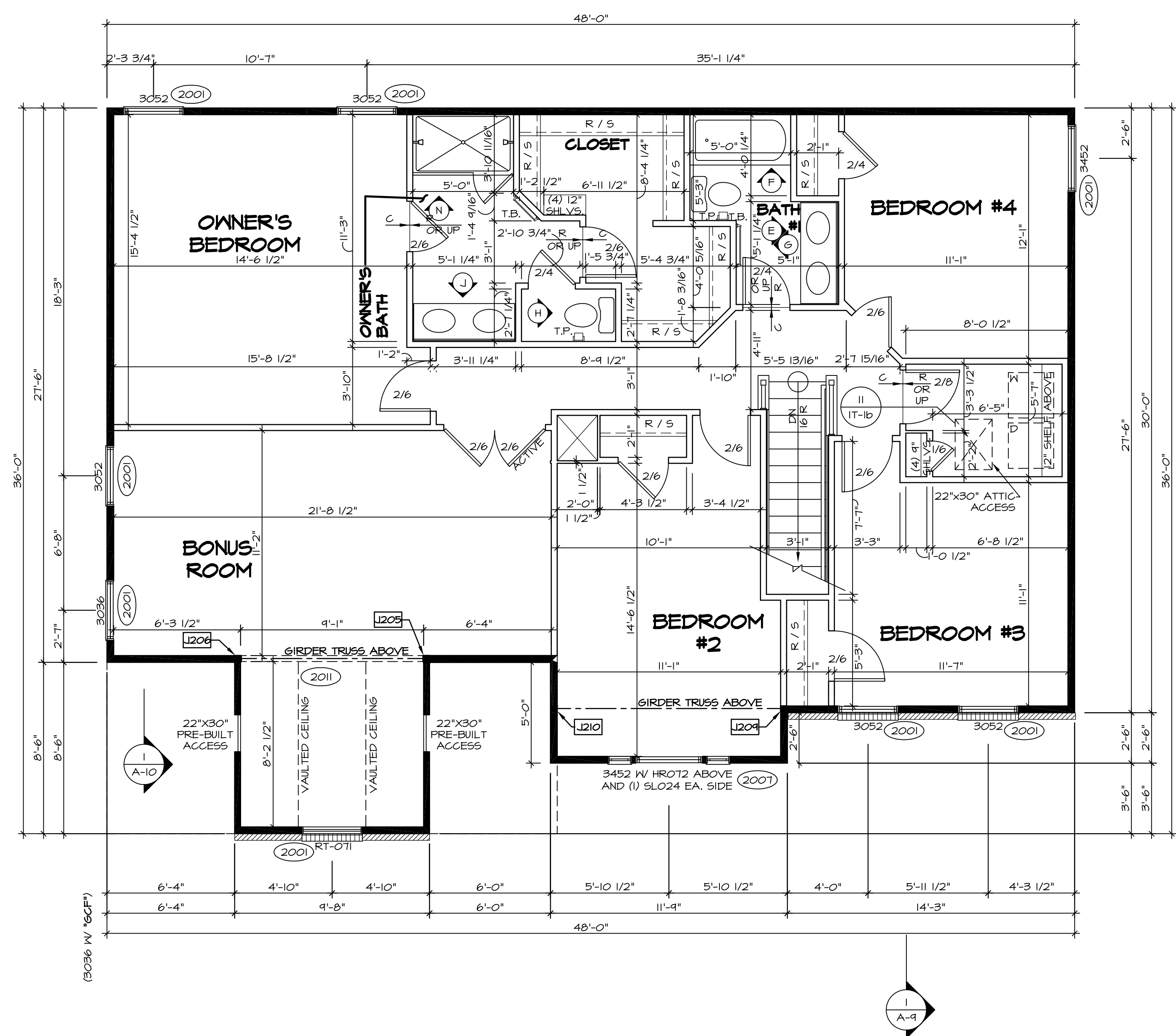
NVR
 NVR, Inc.
 Architects
 Suite 100
 5285 Washburn Circle
 Frederick, MD 21703

C:\NVR\Solves\PALORMO_PALOO_03\DC-16-K99\150157A\Sheets\1.ctb Specific\53 A-7 PLAN - L5.dwg 08/07/17 - 6:58 am

SECOND FLOOR JACK SCHEDULE				
IDENTIFIER	DESCRIPTION	OPTIONS	ENG. NUM.	REMARKS
J205	JACK - (3) 2X4 SFF STUD GRADE	MAY	2011	
J206	JACK - (3) 2X4 SFF STUD GRADE	MAY	2011	
J204	JACK - (2) 2X4 SFF#1	ELE	2011	
J210	JACK - (2) 2X4 SFF#1	ELE	2011	

LEGEND	
	BEARING WALL
	NON BEARING WALL
	INDICATES BEARING FROM POINT-LOAD ABOVE
	JACKS
	BEAM/HEADER
	PAD FOOTING
	STEEL COLUMN
	PORTAL FRAME
	JOIST/TRUSS
	LVL
	ENGINEERING PAGE NUMBER

- FLOOR PLAN NOTES**
- ALL HEADERS ARE (2) 2x6 w/ 2x4 WALLS OR (3) 2x6 w/ 2x6 WALLS, UNLESS OTHERWISE NOTED.
 - ALL HEADERS TO HAVE (1) 2x4 OR 2x6 JACK EACH END, UNLESS OTHERWISE NOTED.
 - ALL EXTERIOR WALLS TO BE 4" AND ALL INTERIOR WALLS TO BE 3 1/2", UNLESS OTHERWISE NOTED.
 - HATCHED AREAS INDICATE DROPPED CEILINGS. ALL DROPPED CEILINGS ARE 12" UNLESS OTHERWISE NOTED.
 - SEE "BRACED WALL PANEL DETAIL SHEET" FOR SPECIAL WALL FRAMING LOCATIONS AND HEADER SIZES, IF APPLICABLE.
 - SEE STANDARD DETAIL CATEGORY "IT" SHEET(S) FOR INTERIOR TRIM DETAILS.
 - SEE ARCHITECTURAL DETAIL SHEET "AD" FOR HOUSE SPECIFIC INTERIOR TRIM OPTION TABLE.
 - ALL WINDOWS HAVE T-0 1/2" HEADER HEIGHT UNLESS OTHERWISE NOTED.
 - ALL CASED OPENINGS AT T-11", UNLESS OTHERWISE NOTED.



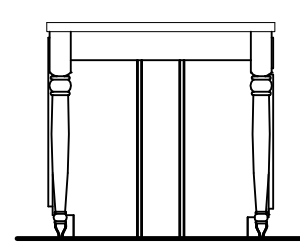
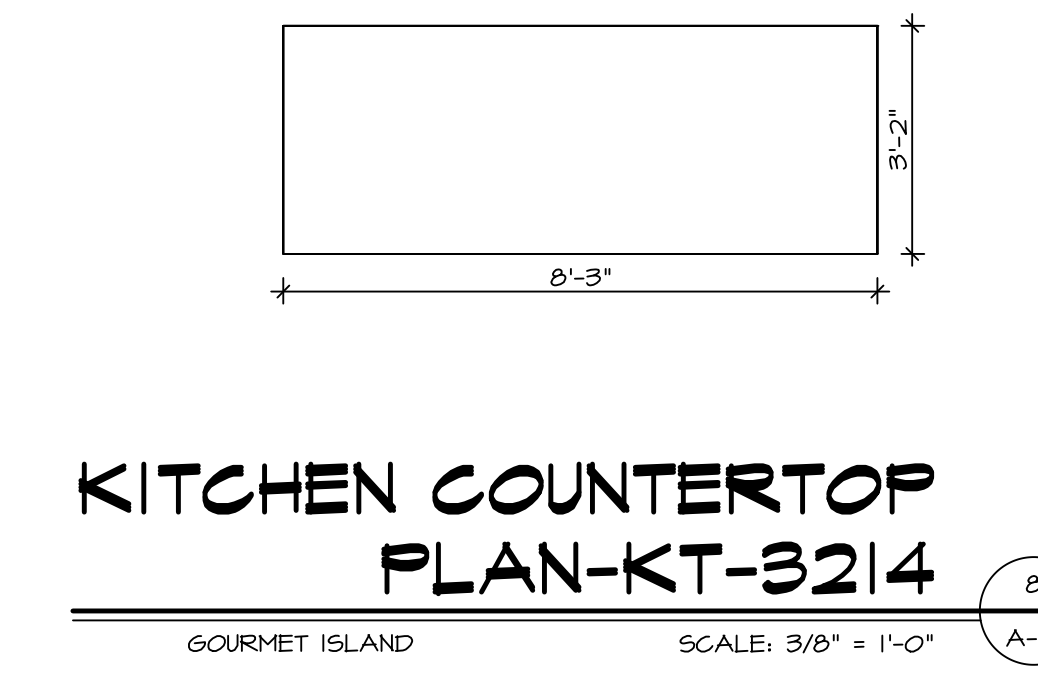
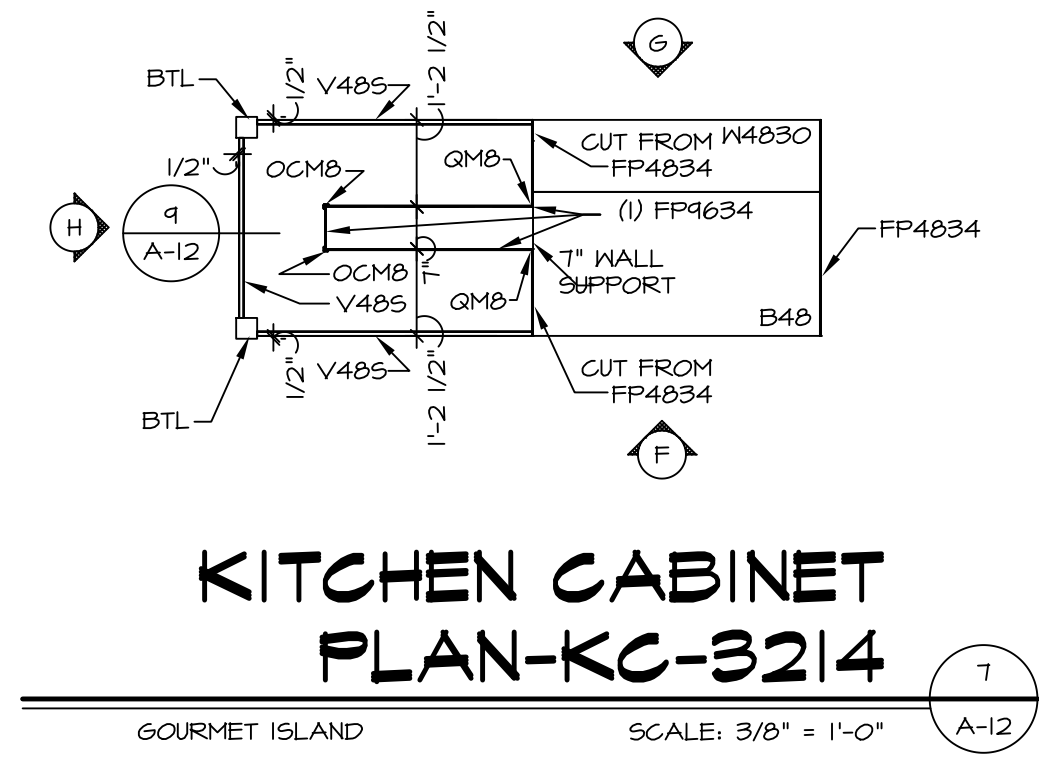
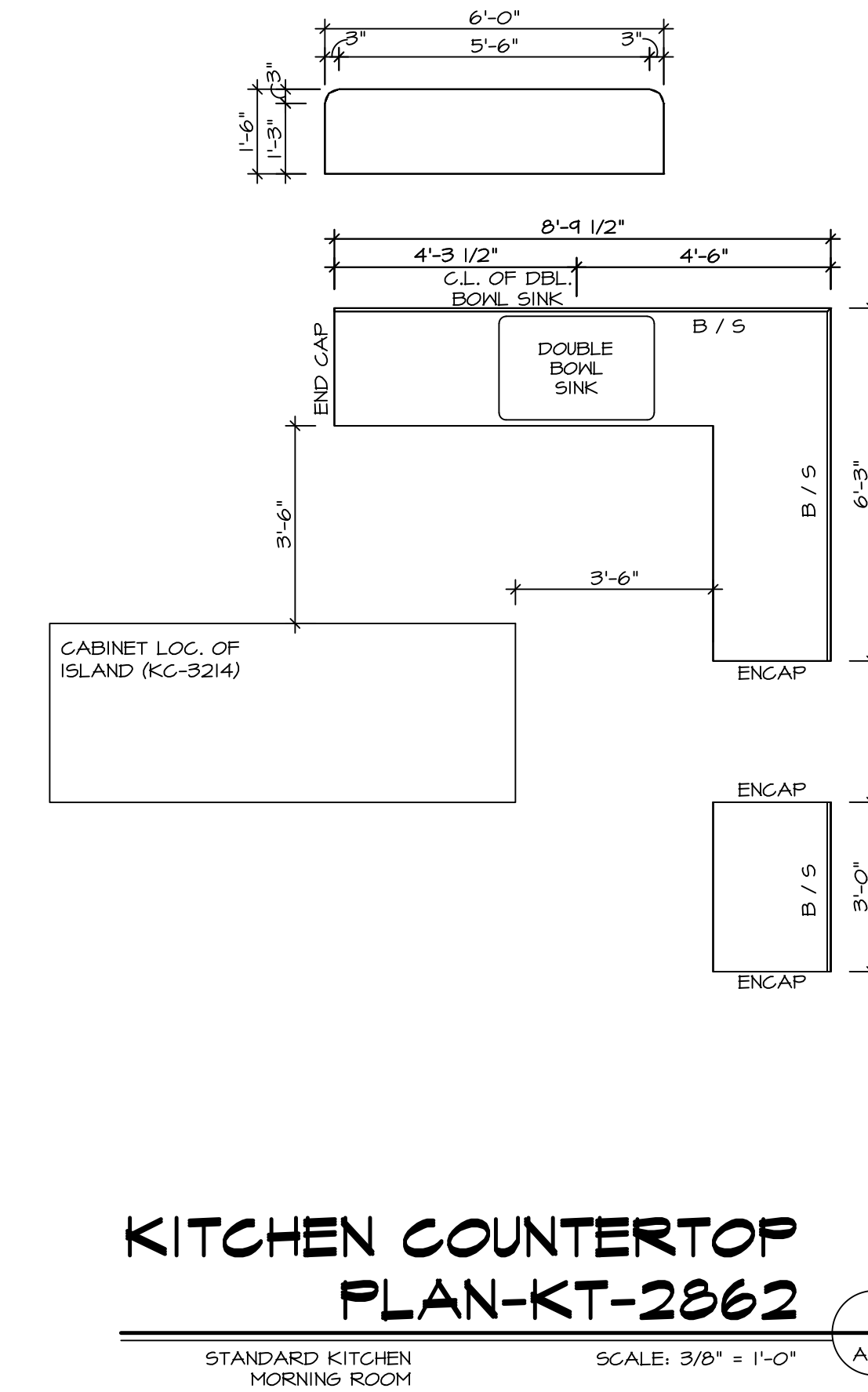
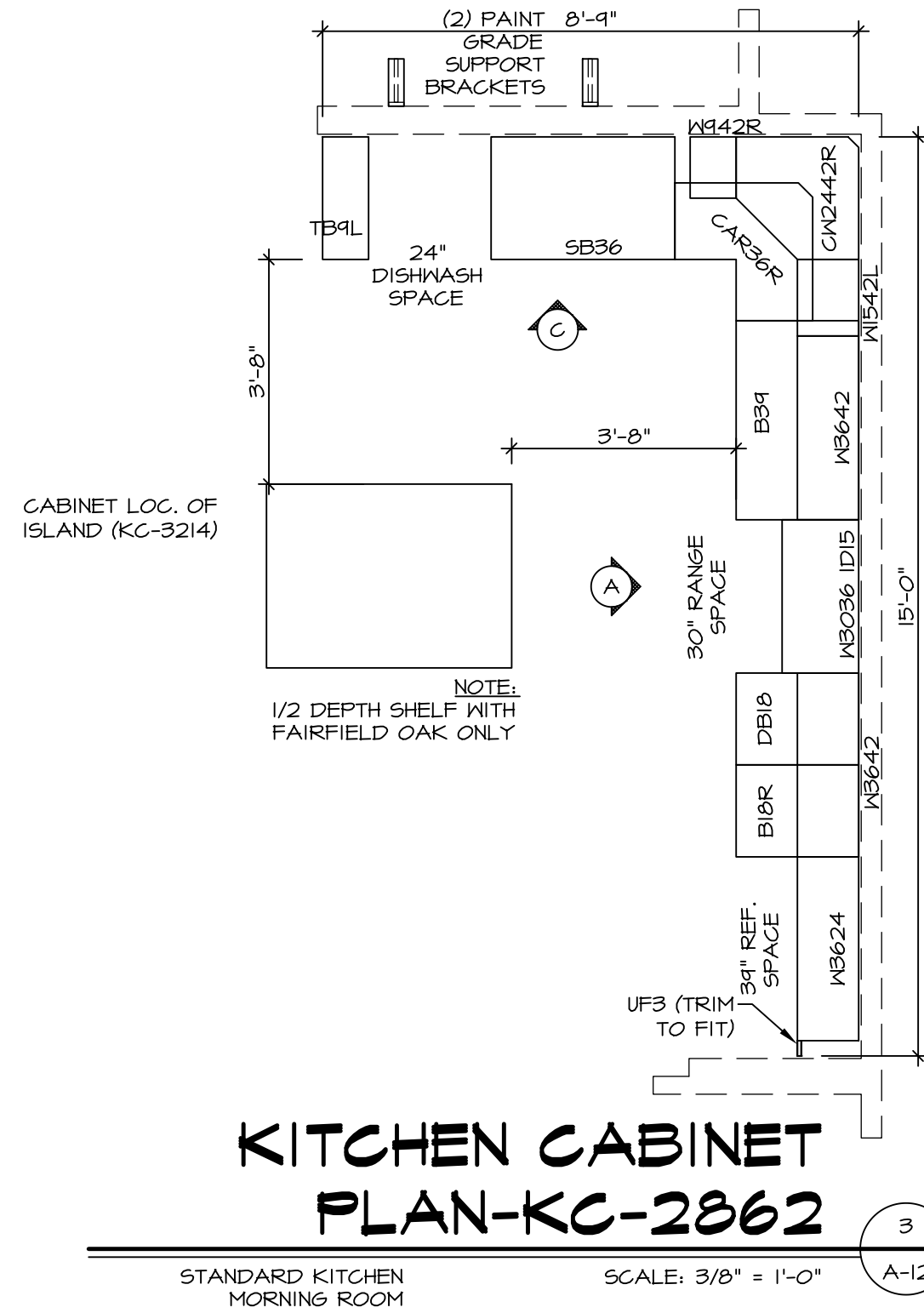
SECOND FLOOR PLAN
SCALE: 1/4" = 1'-0"

SHEET NO. A-8	MODEL PALERMO	DRAWING TITLE SECOND FLOOR PLAN	OPTION DESCRIPTION 60	SET NO. PALOO	VERSION 03	DRAWN BY	DATE:	OPTION
				<p>REMARKS</p> <p>1 08/04/16 TH - DRAWING ALIGNMENT</p> <p>2 07/12/17 SLS - T-PLY CONVERSION PROJECT</p>				

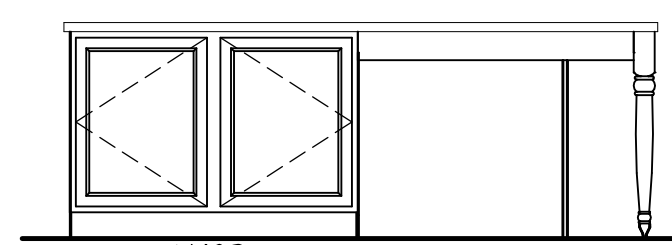
NVR, Inc., owner, expressly reserves its copyright in these plans. These plans are not to be reproduced, changed, copied, or otherwise used in any way without the written consent of NVR, Inc.

NVR
NVR, Inc.
Architectural Services
100
5285 Washington Blvd
Frederick, MD 21703

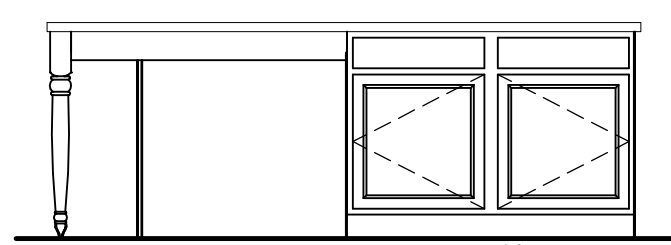
C:\NVR\Solves\PALERMO_PALOO_03\DCY-YG-K99\501157\Sheets\1.ctb Specific\60 A-8 FLN2_LS.dwg 08/07/17 - 6:58 am



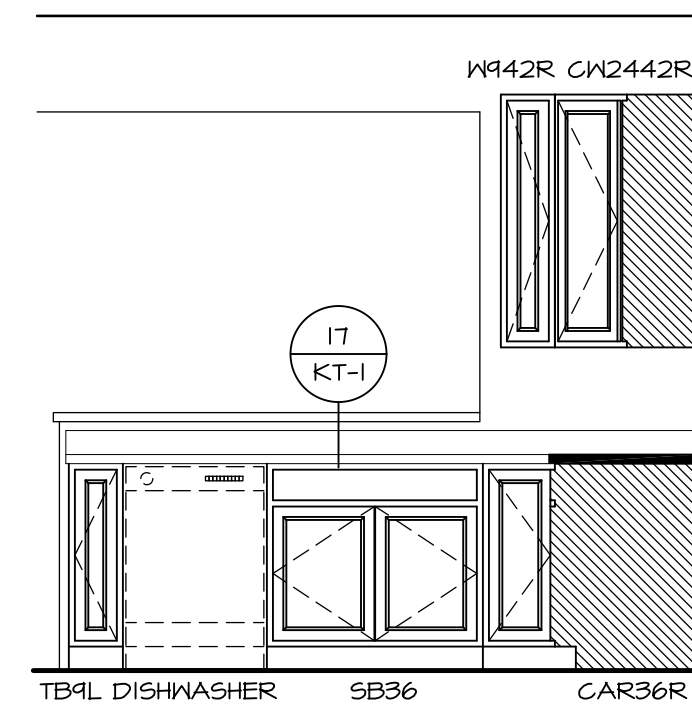
KITCHEN ELEVATION H
 SCALE: 3/8" = 1'-0"



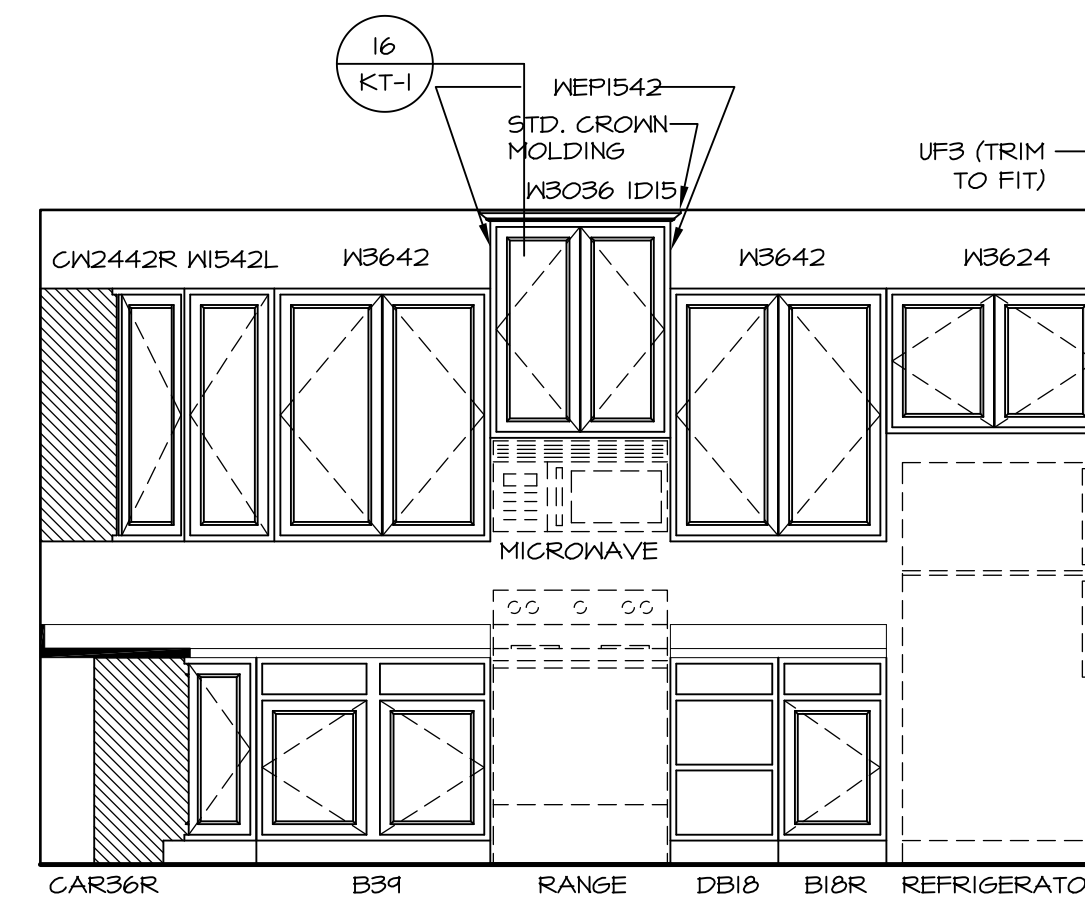
KITCHEN ELEVATION G
 SCALE: 3/8" = 1'-0"



KITCHEN ELEVATION F
 SCALE: 3/8" = 1'-0"



KITCHEN ELEVATION C
 SCALE: 3/8" = 1'-0"

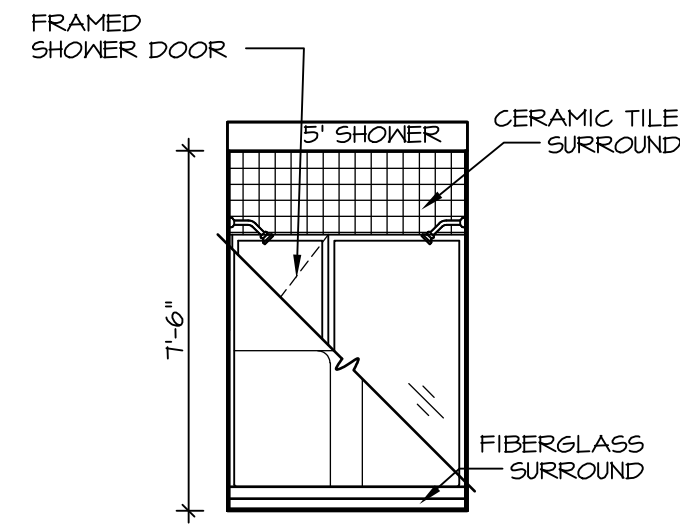


KITCHEN ELEVATION A
 SCALE: 3/8" = 1'-0"

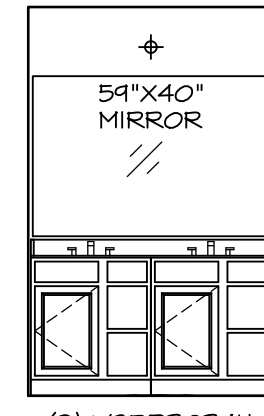
SHEET NO. A-12	MODEL PALERMO	SET NO. PALOO	REMARKS
	DRAWING TITLE	VERSION 03	
70	OPTION DESCRIPTION	DRAWN BY	REV. NO. DATE
		DATE:	
		OPTION	

NVR, Inc., owner, expressly reserves its common law copyright in these plans. These plans are not to be reproduced, changed, copied in any way, or used for any purpose not intended by NVR, Inc. without the written consent of NVR, Inc.

NVR
 NVR, Inc.
 Architectural Services
 Architects
 5285 Westheimer Road, Suite 100
 Frederick, MD 21703

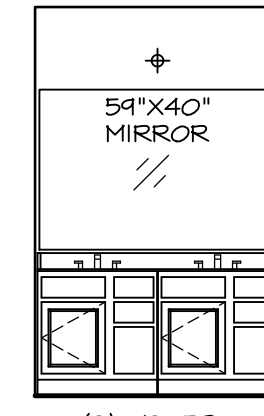


N OWNER'S BATH
SCALE: 1/4" = 1'-0"



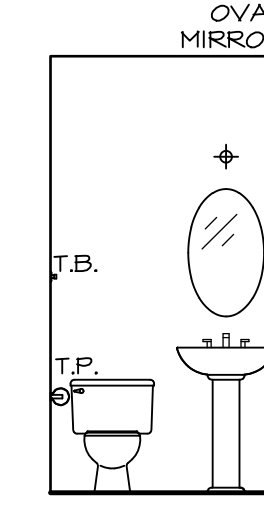
(2) V5DB3034H

J OWNER'S BATH
SCALE: 1/4" = 1'-0"

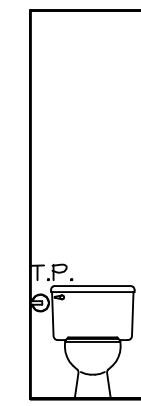


(2) V5DB30

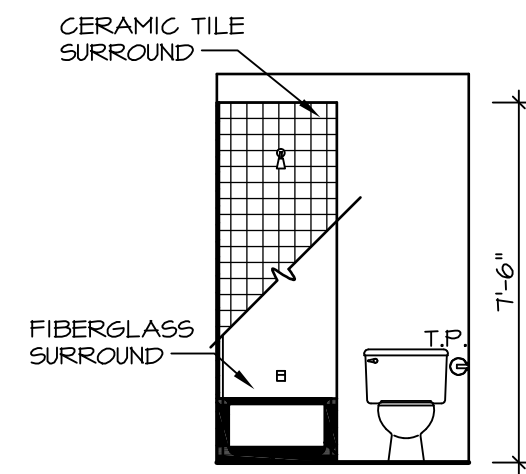
E BATH #1
SCALE: 1/4" = 1'-0"



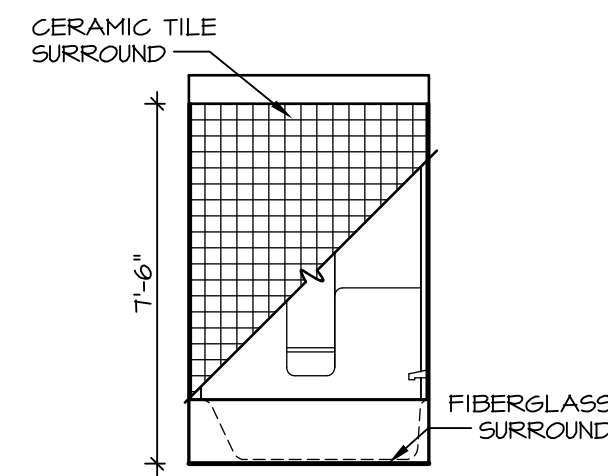
B POWDER ROOM
SCALE: 1/4" = 1'-0"



H OWNER'S BATH
SCALE: 1/4" = 1'-0"



G BATH #1
SCALE: 1/4" = 1'-0"



F BATH #1
SCALE: 1/4" = 1'-0"

NOTES:

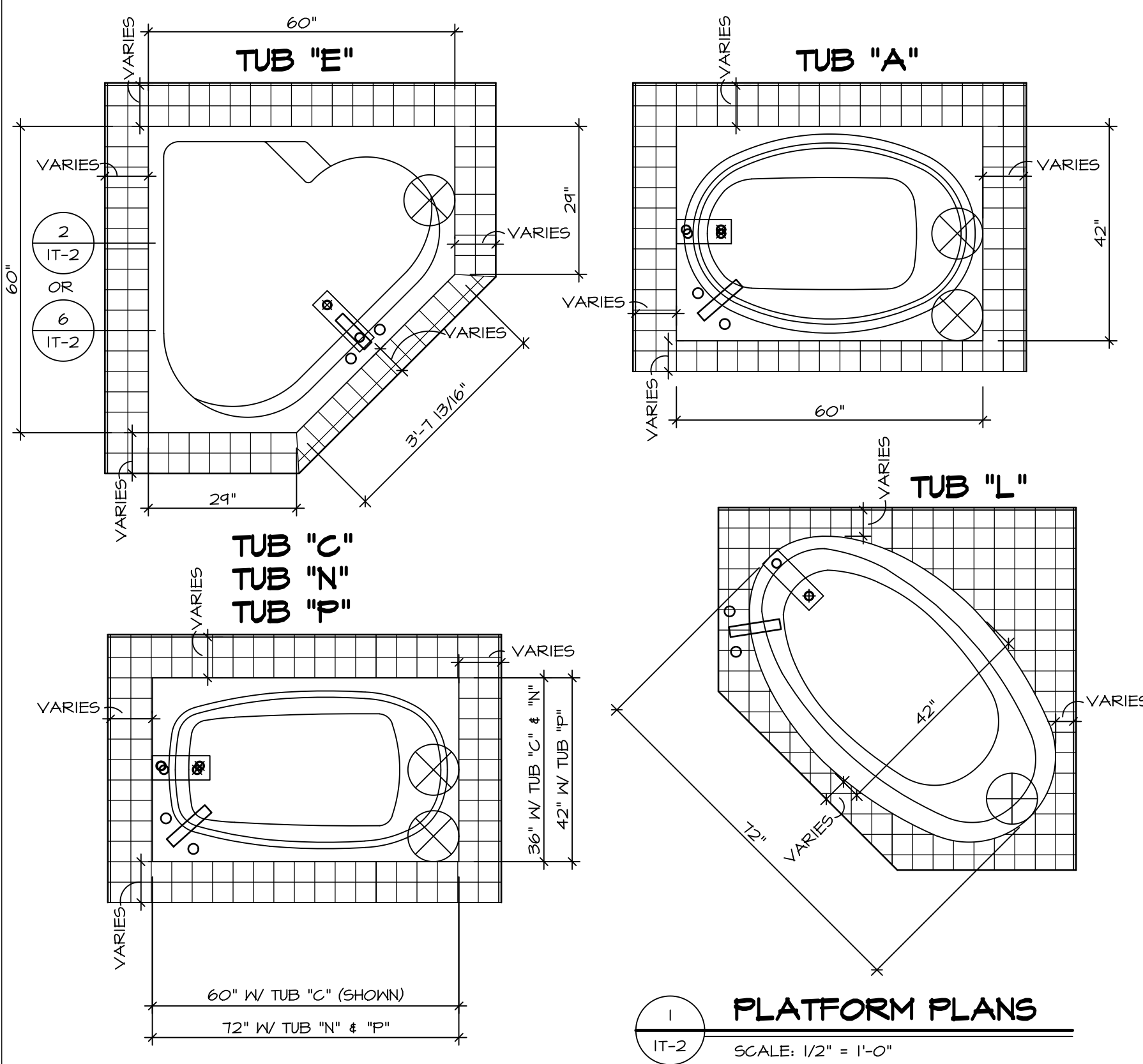
1. TEMPERED GLASS SHOWER ENCLOSURE WITH SWING DOOR OR OPTIONAL SLIDING DOOR BY DIVISION
2. TUB ACCESS PANELS PROVIDED AS NEEDED, ALL MATERIALS BY DIVISION
3. REFER TO SHEET IT-2 FOR TUB AND SHOWER DETAILS.
4. ALL V5DB24-42 DRAWERS TO BE SET ON RIGHT HAND.
5. BATH ELEVATIONS ARE SHOWN PER PLAN.

SHEET NO.	MODEL	SET NO.	VERSION	DATE	OPTION
A-13	PALERMO	03	03		
	DRAWING TITLE	DRAWN BY	DATE:		
	BATH ELEVATIONS				
	OPTION DESCRIPTION				

NVR
NVR, Inc.
Architectural Services
Architects
5285 Westover Lane, Suite 100
Frederick, MD 21703

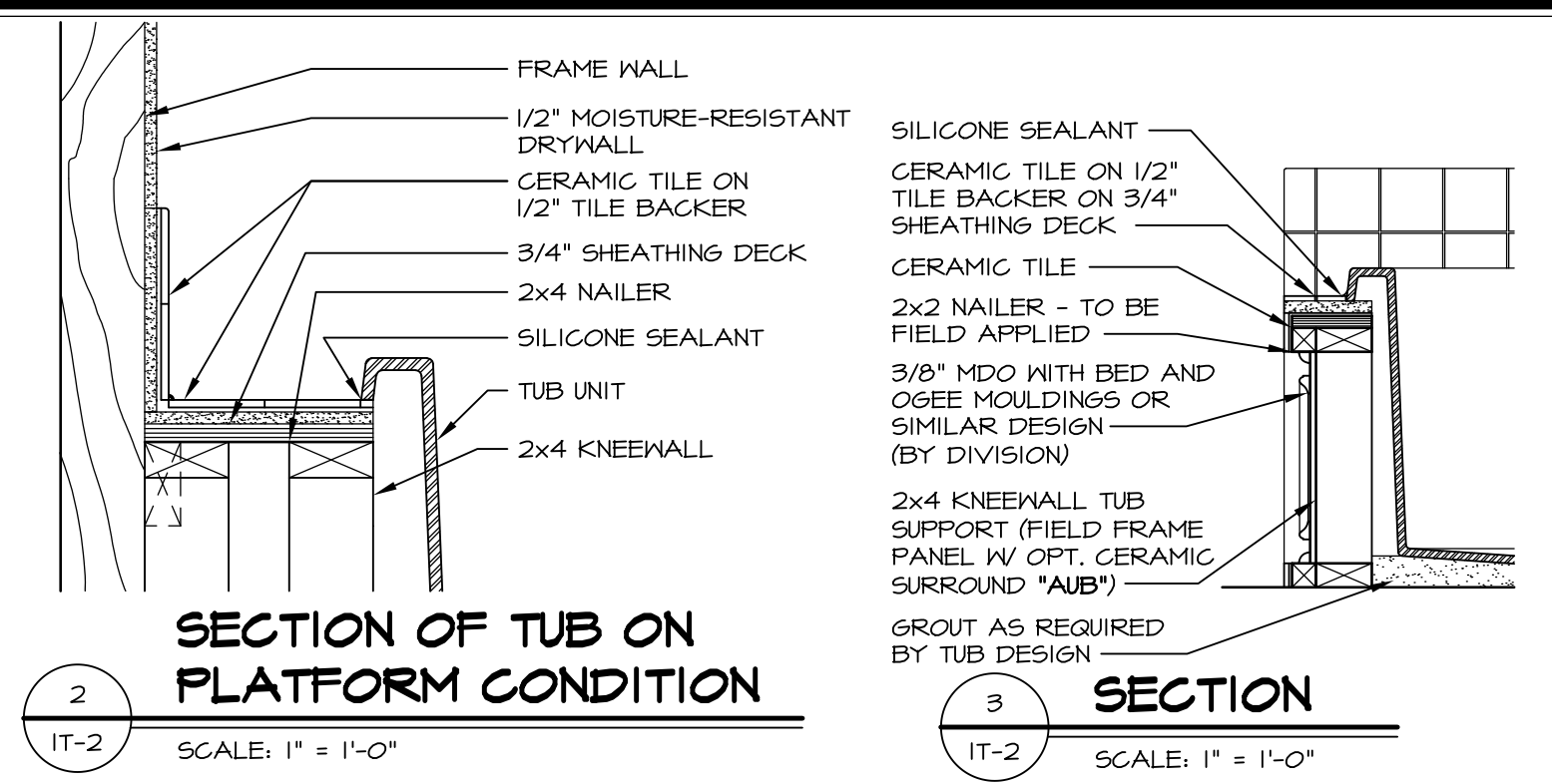
NVR, Inc., owner, expressly reserves its copyright in these plans. These plans are not to be reproduced, changed, copied, or otherwise used in any way without the written consent of NVR, Inc.

REV. NO.	DATE	REMARKS
1	08/04/16	TM - DRAWING ALIGNMENT

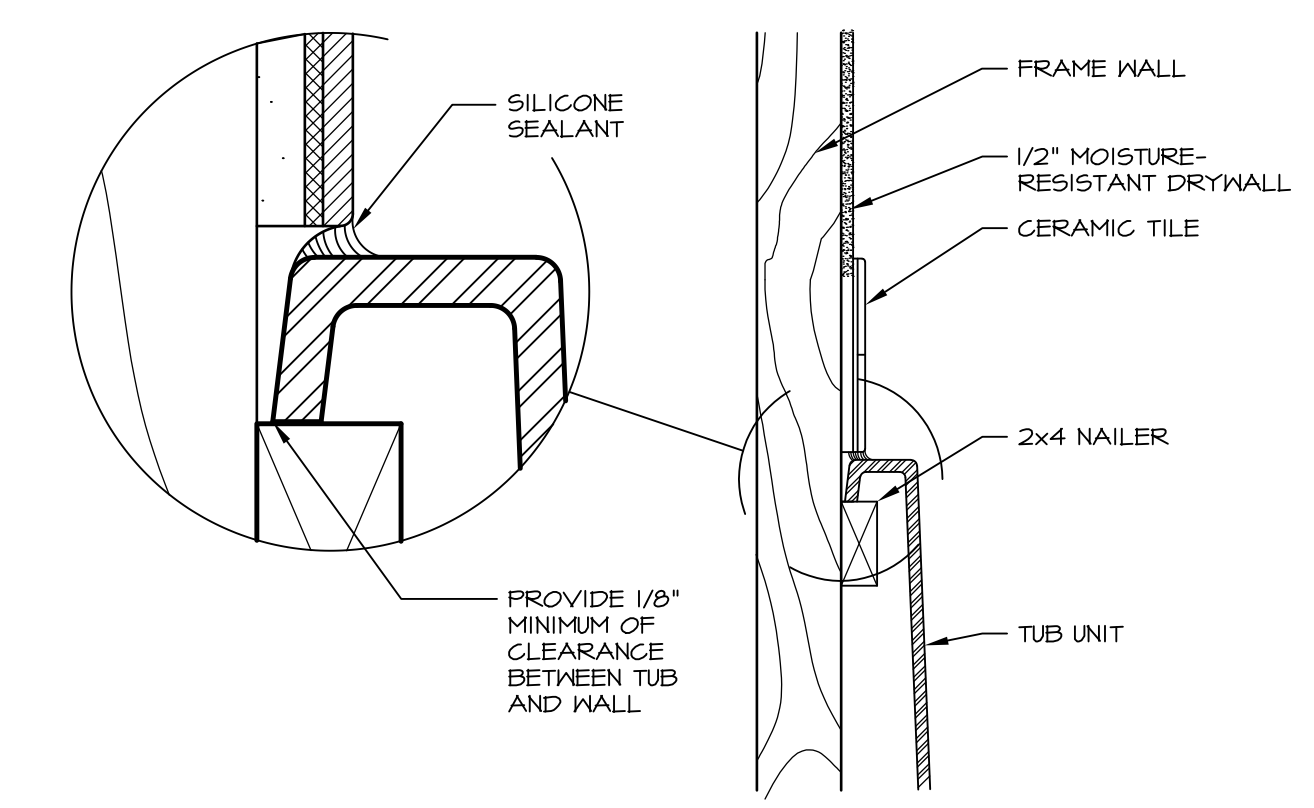


1 PLATFORM PLANS
SCALE: 1/2" = 1'-0"

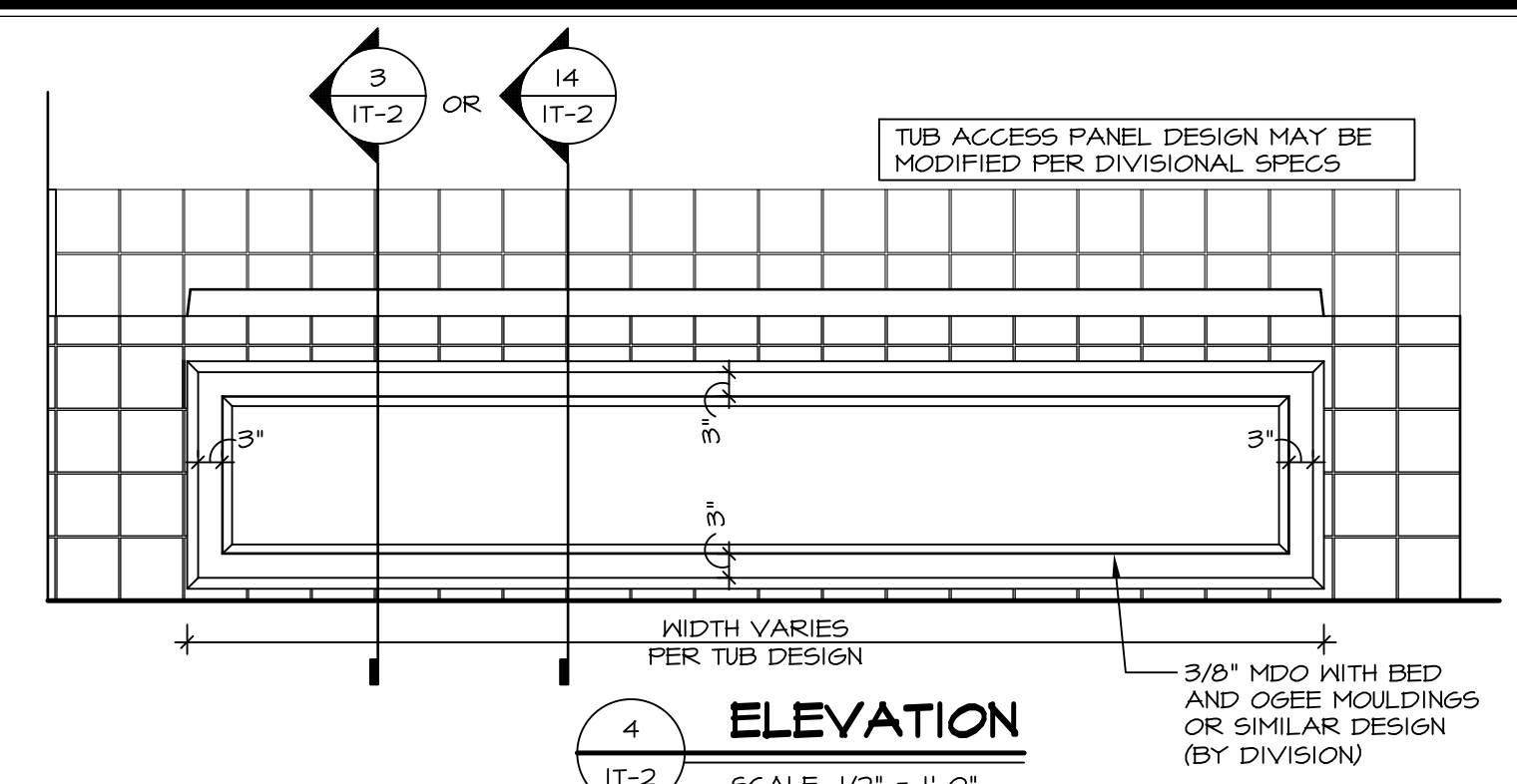
TUB	MANUF.	HEIGHT	WIDTH	LENGTH	TUB DECK PANEL HEIGHT
"A"	KOHLER/ STERLING	18 3/4"	42"	60"	17 1/8"
"C"	KOHLER/ STERLING	18 3/4"	36"	60"	17 1/8"
"E"	KOHLER/ STERLING	19 1/2"	60"	60"	17 7/8"
"L"	KOHLER/ STERLING	18 1/2"	42"	72"	16 7/8"
"N"	KOHLER/ STERLING	18 3/4"	36"	72"	17 1/8"
"P"	KOHLER/ STERLING	18 3/4"	42"	72"	17 1/8"



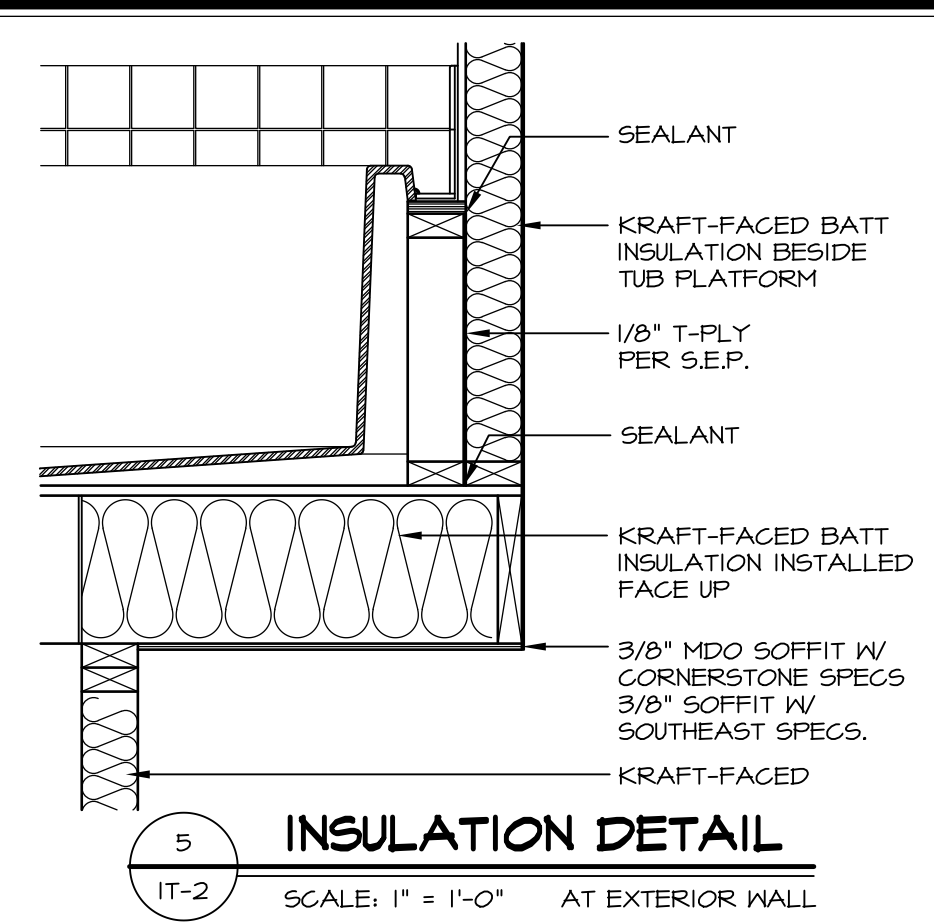
2 SECTION OF TUB ON PLATFORM CONDITION
SCALE: 1" = 1'-0"



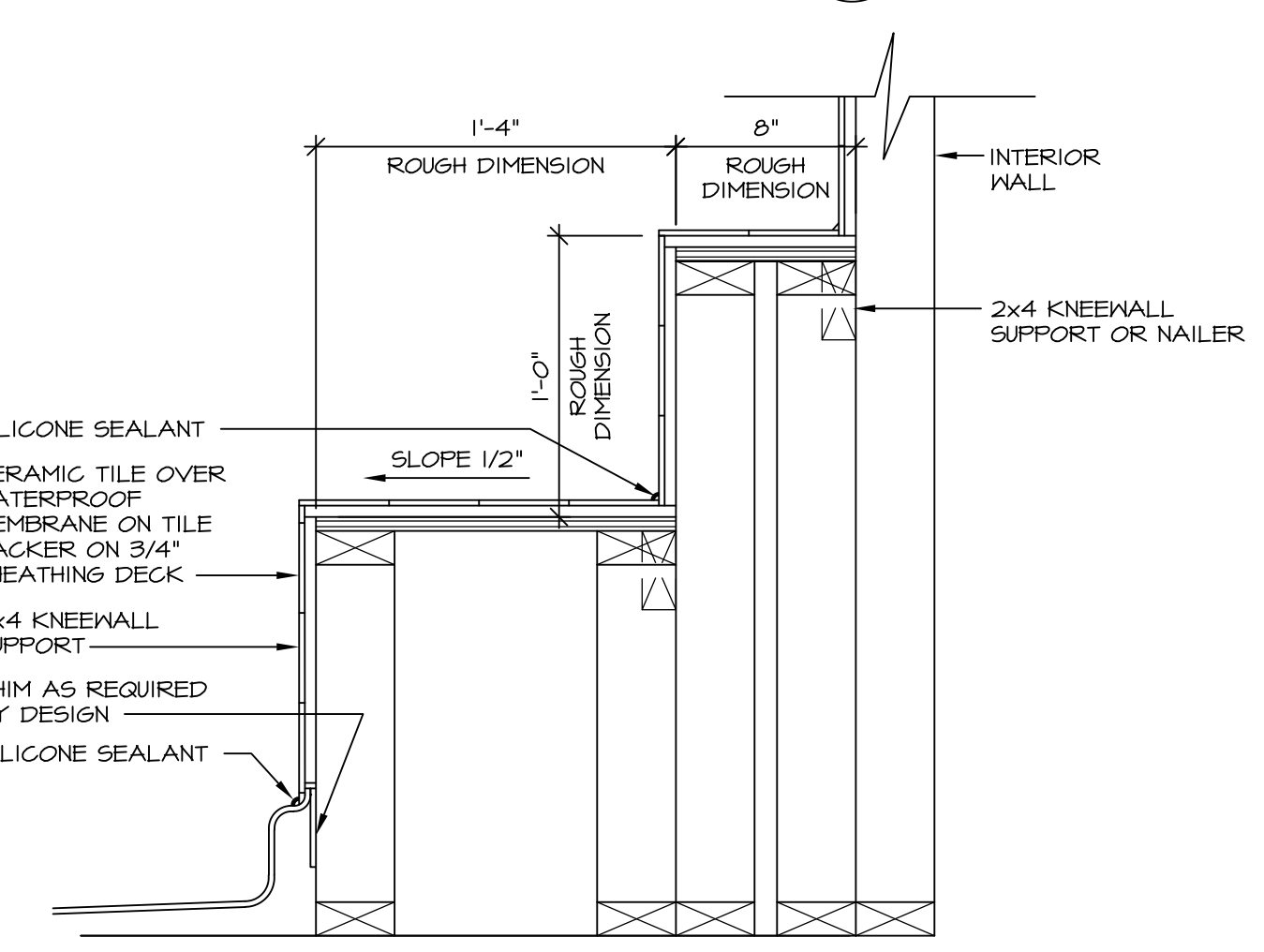
3 SECTION OF TUB TO WALL CONDITION
SCALE: 1 1/2" = 1'-0"



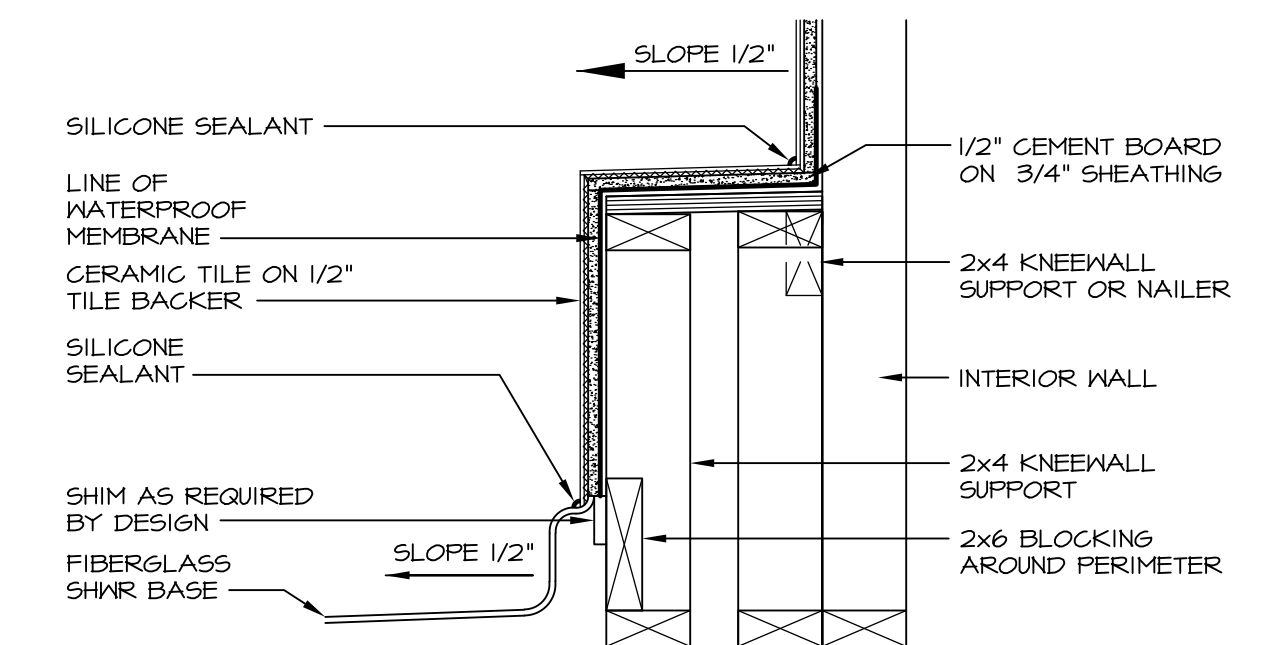
4 ELEVATION
SCALE: 1/2" = 1'-0"



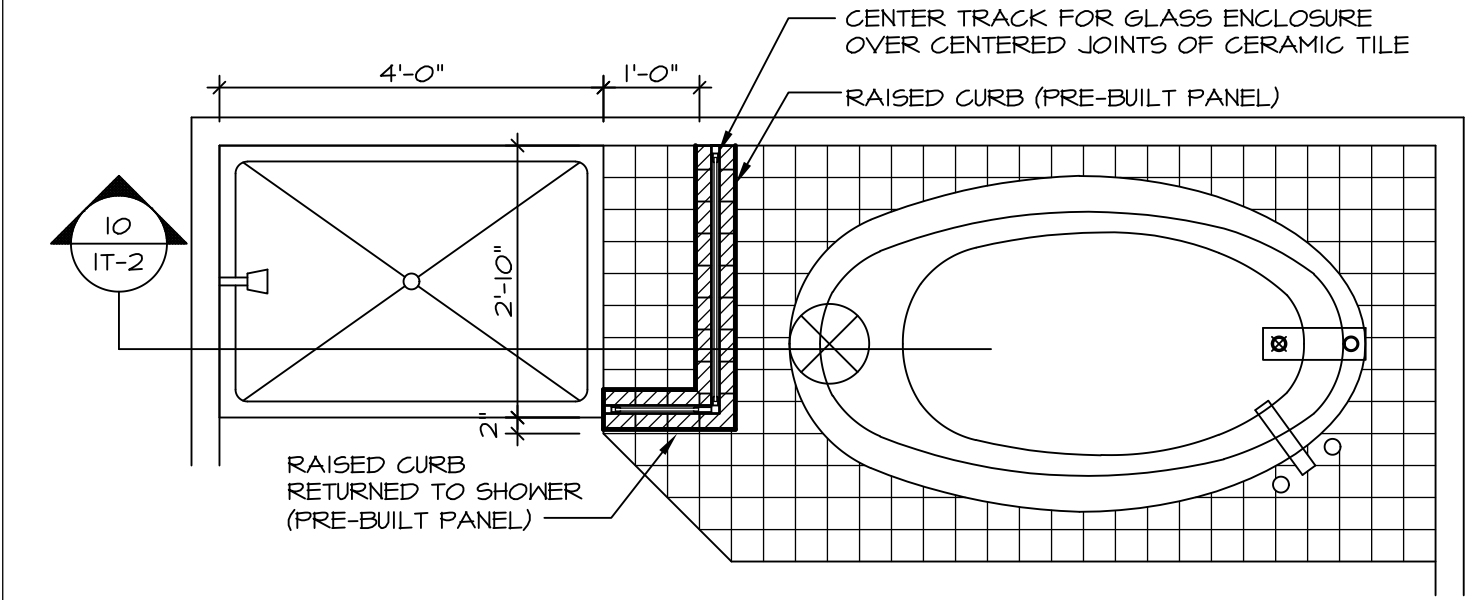
5 INSULATION DETAIL
SCALE: 1" = 1'-0" AT EXTERIOR WALL



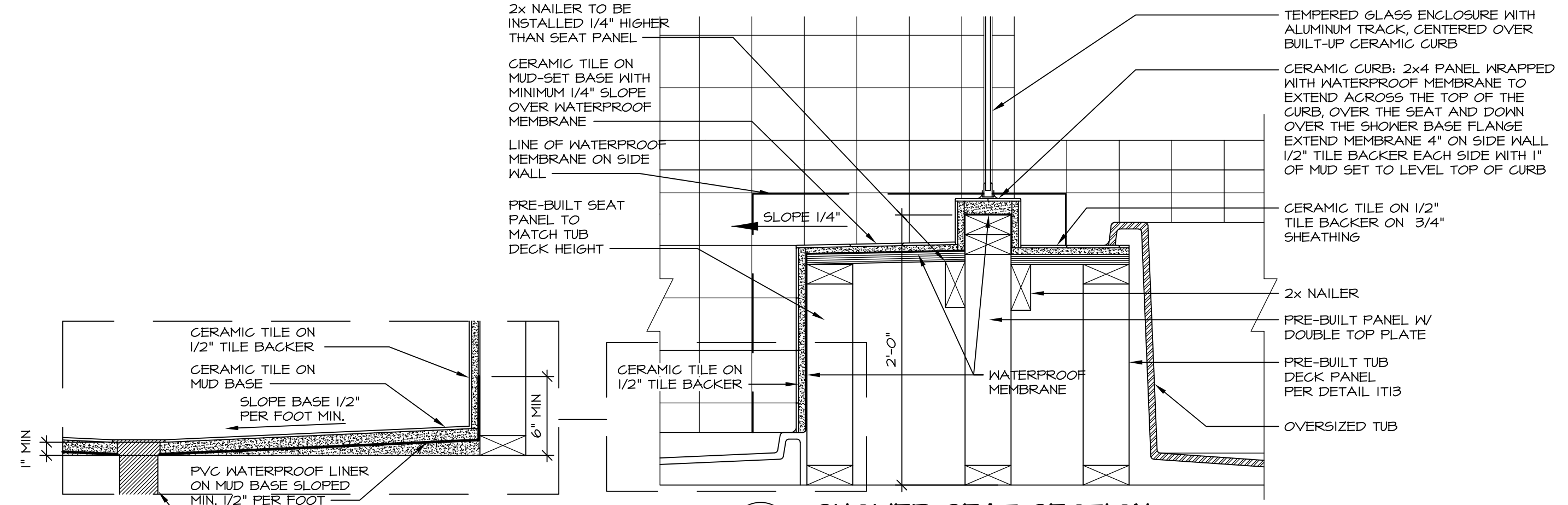
6 SECTION OF SHOWER SEAT AND SHELF
SCALE: 1 1/2" = 1'-0"



7 SECTION OF SHOWER SEAT
SCALE: 1-1/2" = 1'-0" FIBERGLASS SHOWER BASE



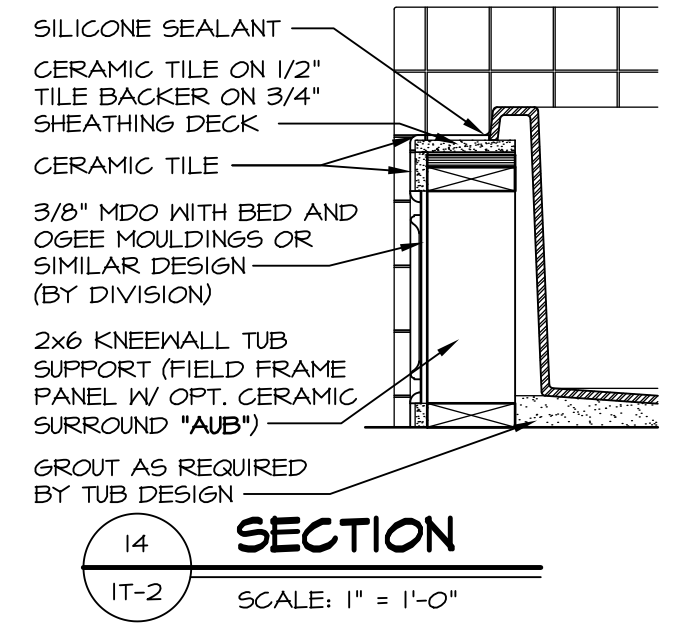
9 SHOWER SEAT PLAN / DETAIL
SCALE: 1/2" = 1'-0"



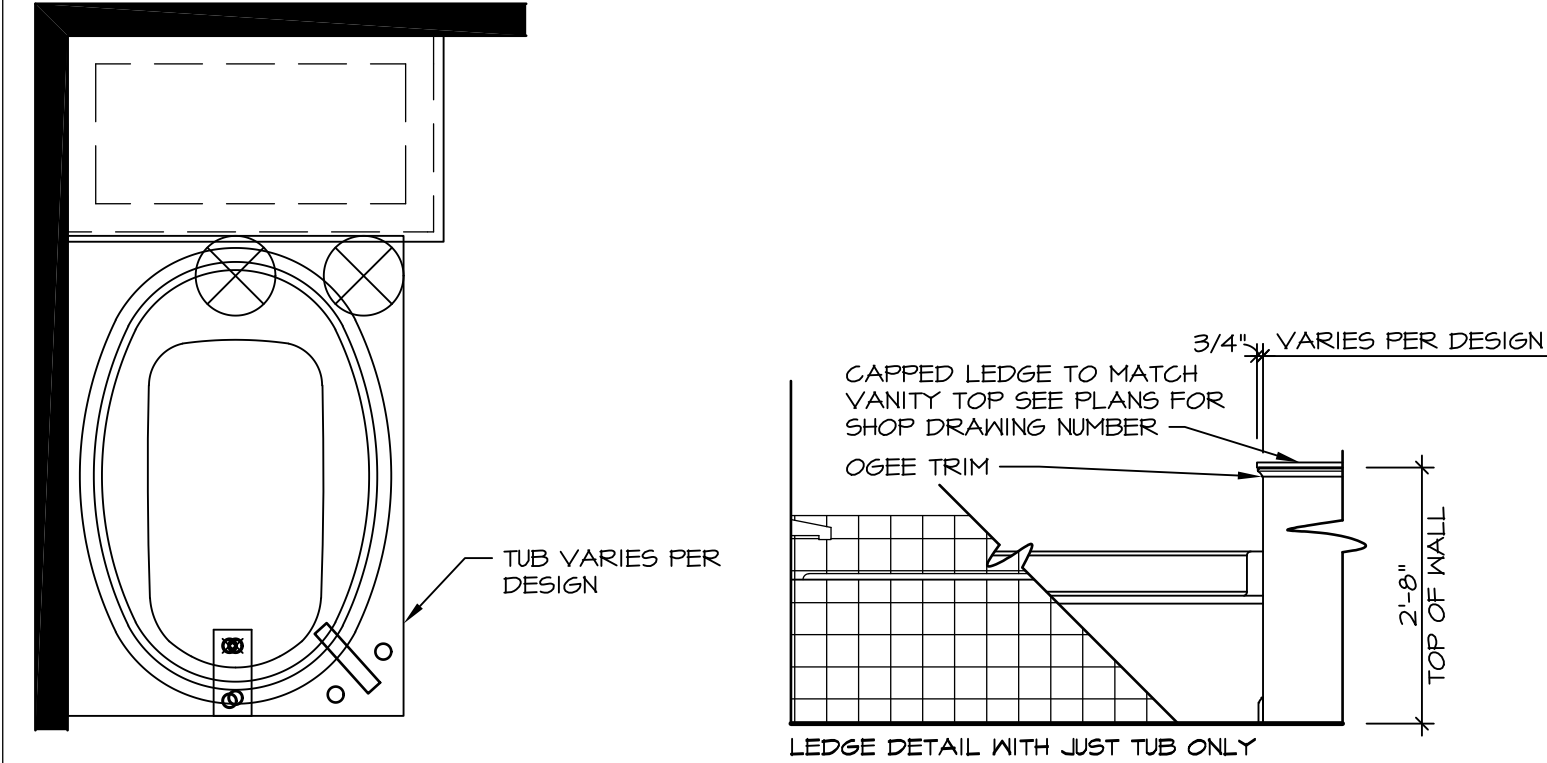
10 SHOWER SEAT SECTION
SCALE: 1-1/2" = 1'-0"



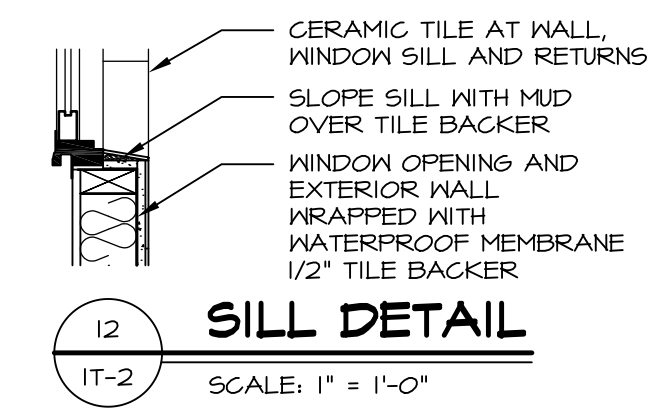
11 ALTERNATE SHOWER PAN DETAIL



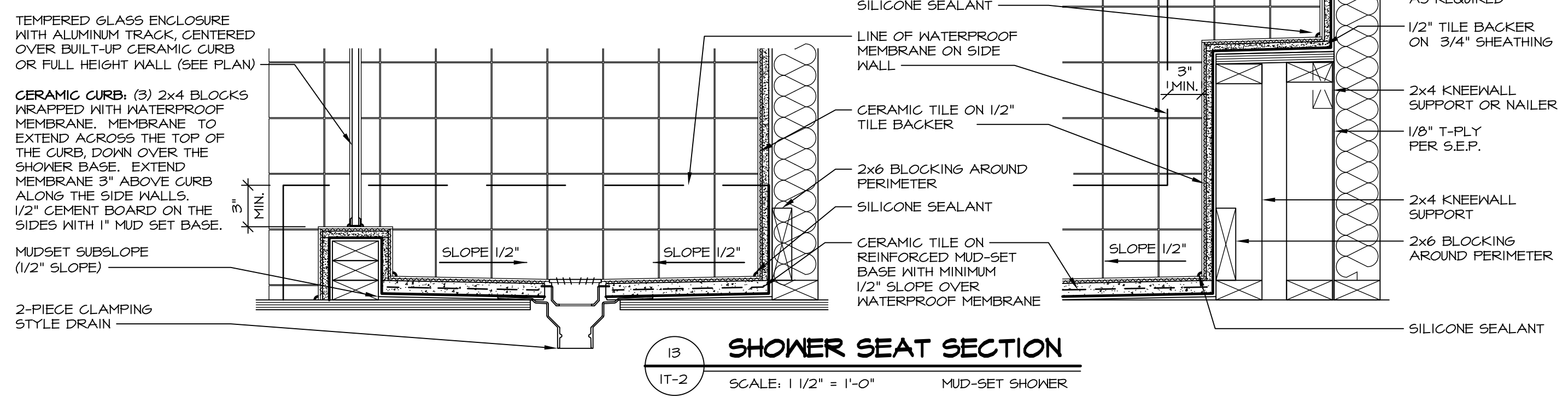
12 SECTION
SCALE: 1" = 1'-0"



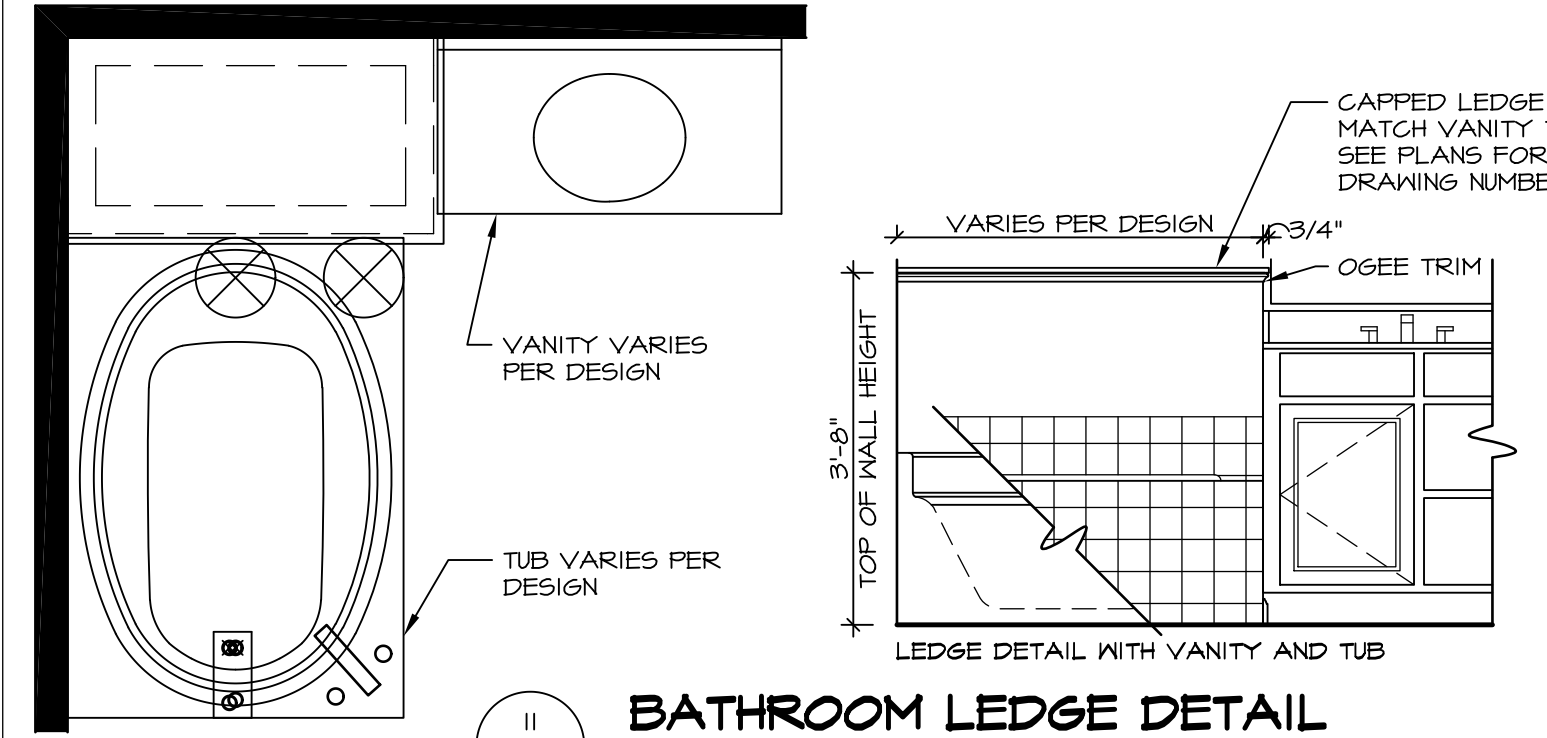
13 BATHROOM LEDGE DETAIL
SCALE: 1/2" = 1'-0"



14 SILL DETAIL
SCALE: 1" = 1'-0"



15 SHOWER SEAT SECTION
SCALE: 1 1/2" = 1'-0" MUD-SET SHOWER



16 BATHROOM LEDGE DETAIL
SCALE: 1/2" = 1'-0"

REVISIONS

REV. NO.	DATE	DESCRIPTION
5/11/17	5/11/17	EEP - REVISED DETAIL 1 AND 11 TO REMOVE TUB ACCESS PANEL REF. (CBS #5 5414)

NVR, Inc., owner, expressly reserves its common law copyright and other property rights in these plans. These plans are not to be reproduced, stored in a retrieval system, or transmitted in any form or by any means, electronic, mechanical, photocopying, recording, or by any information storage and retrieval system, without first obtaining the expressed written consent of NVR, Inc.

NVR
NVR, Inc.
Architectural Services
5285 Westpark Drive, Suite 100
Frederick, MD 21703

SET NO. NVR
VERSION
DRAWN BY
DATE:
OPTION

STANDARD DETAILS
DRAWING TITLE
INTERIOR TRIM DETAILS
BATH DETAILS
OPTION DESCRIPTION

SHEET NO. **IT-2**