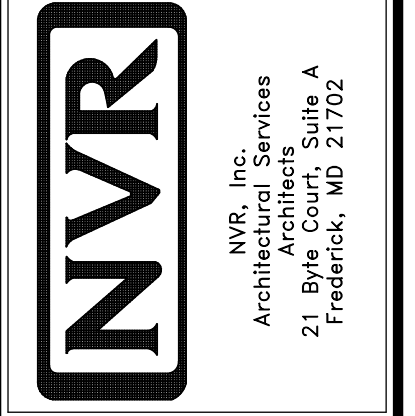


1
A-4
SCALE: 1/4" = 1'-0"
PLUMBING LAYOUT

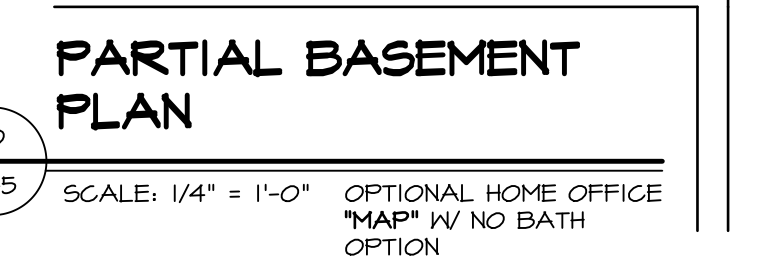
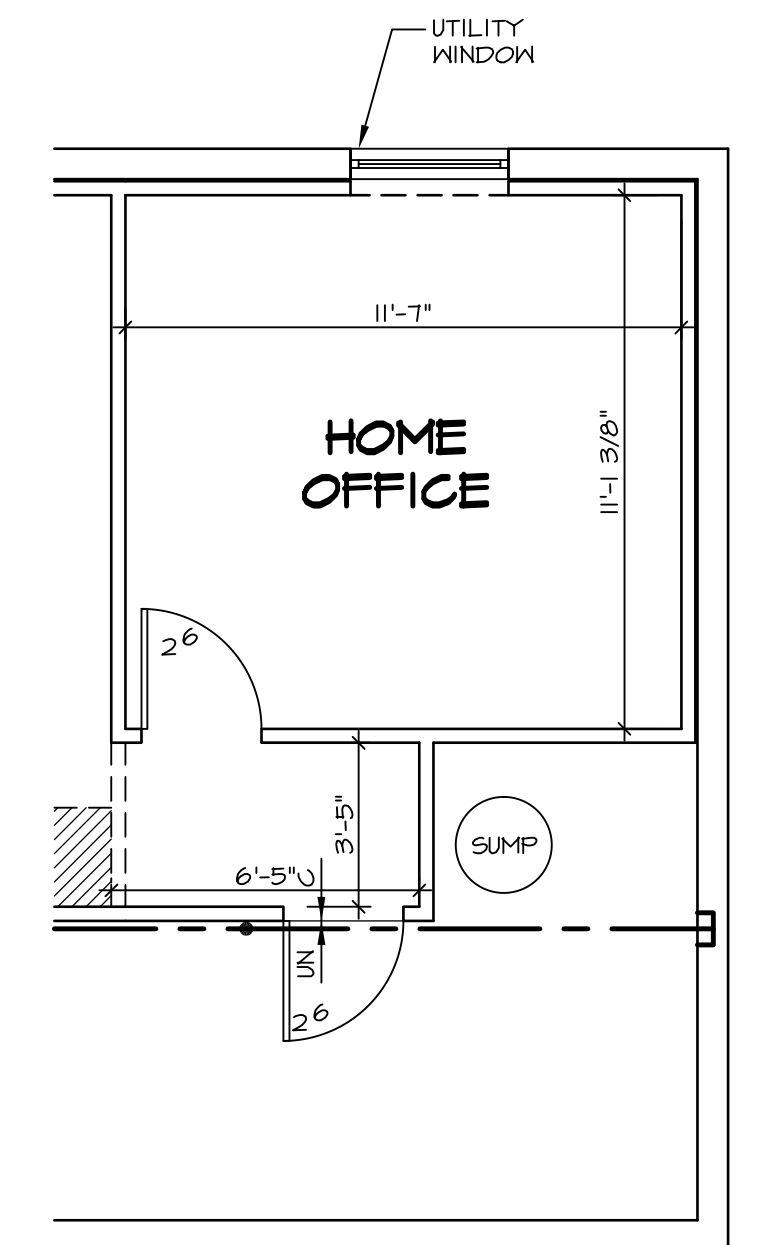
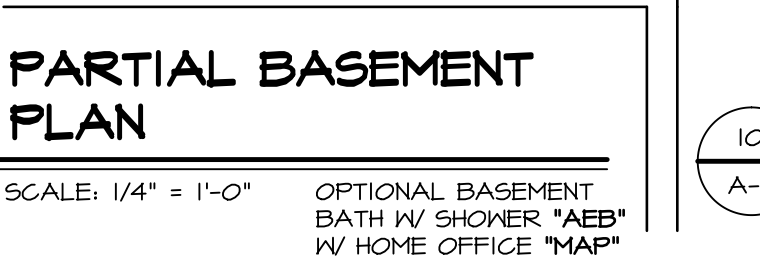
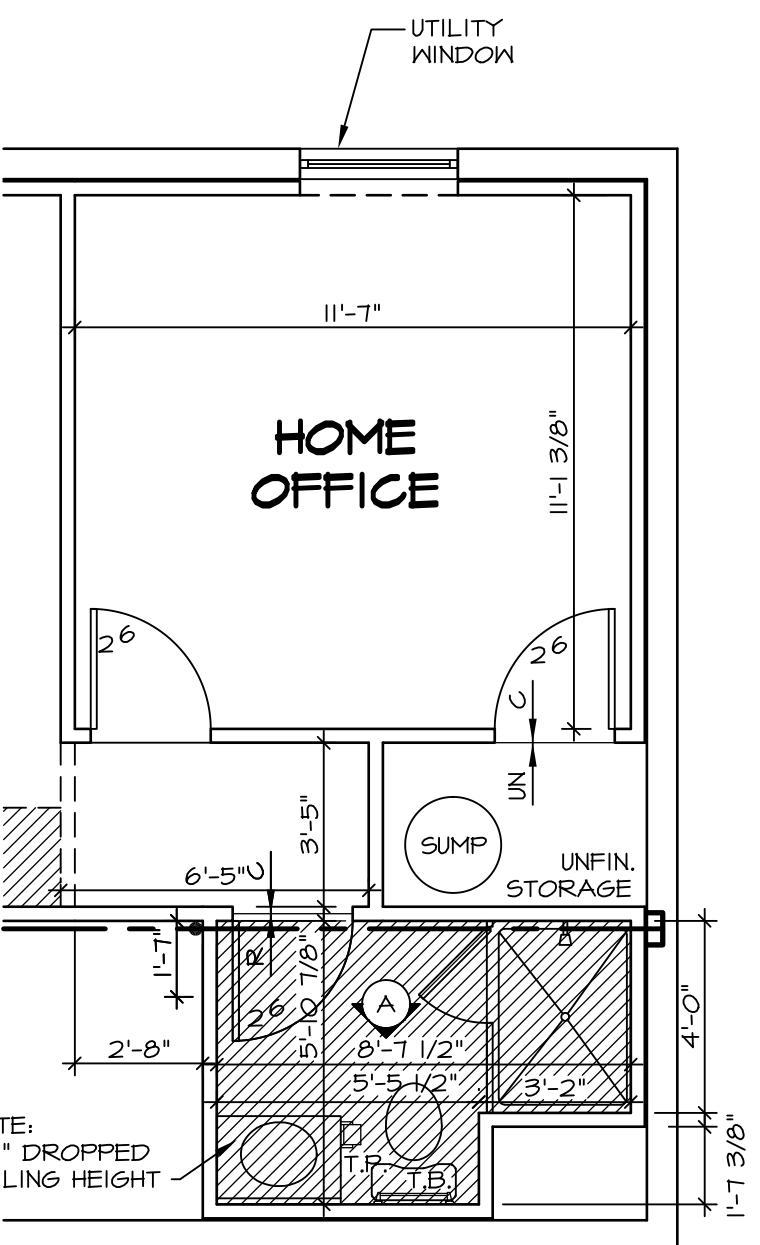
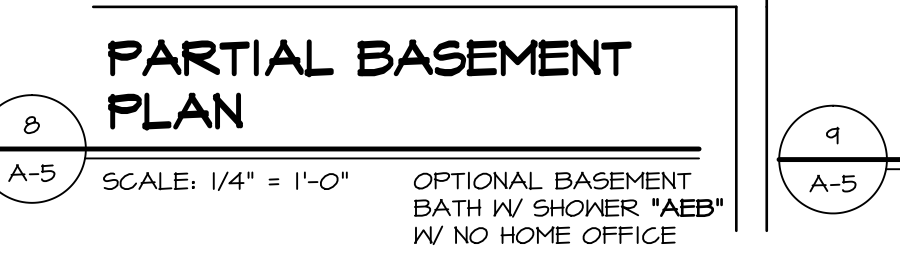
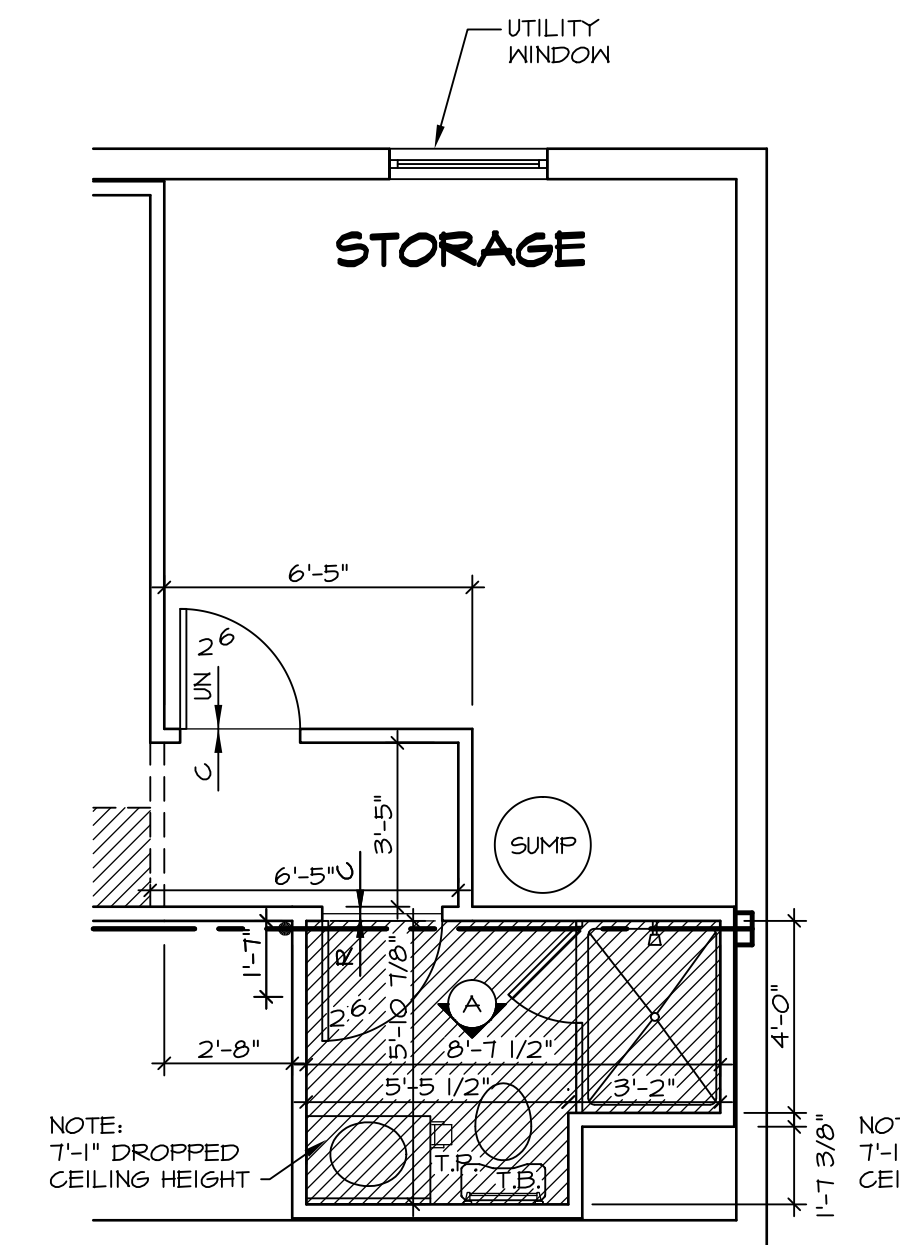
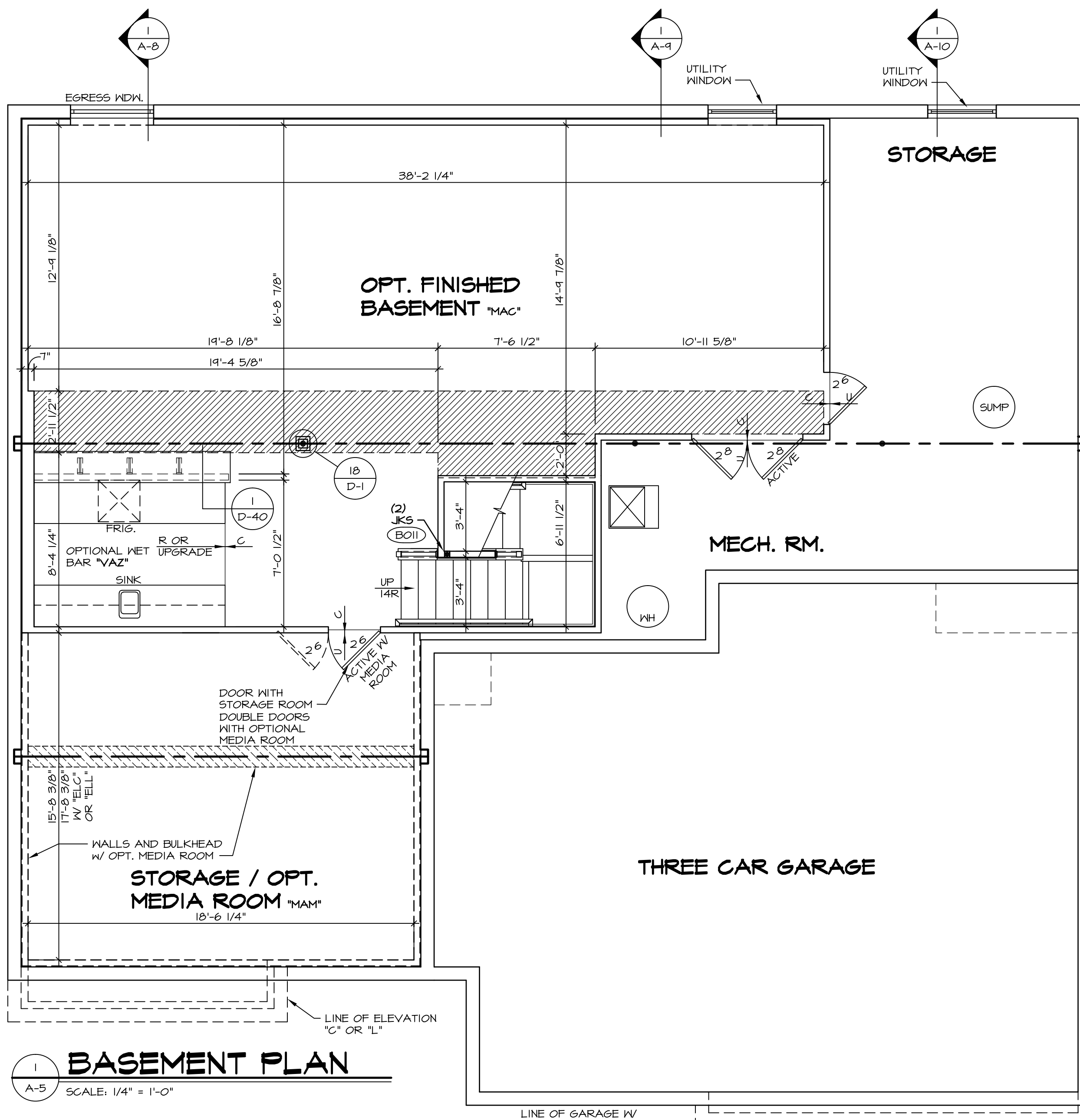
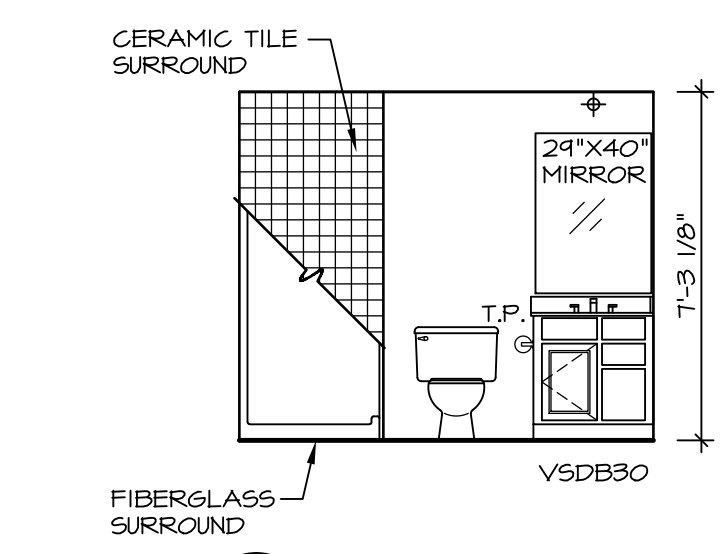
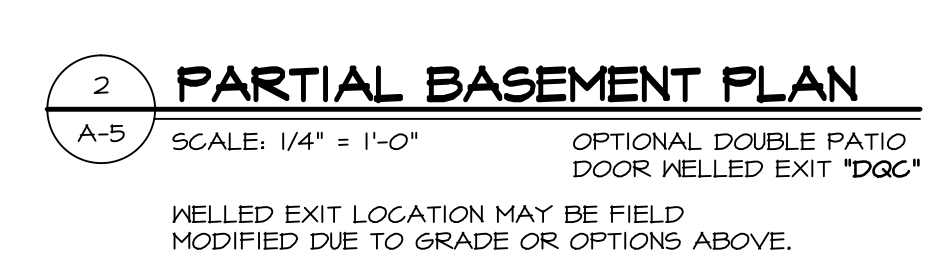
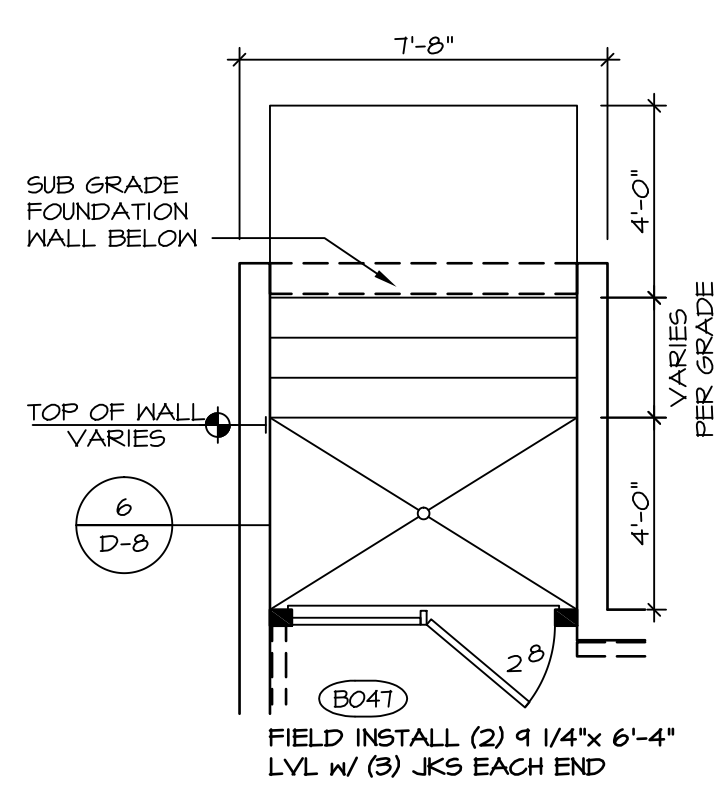
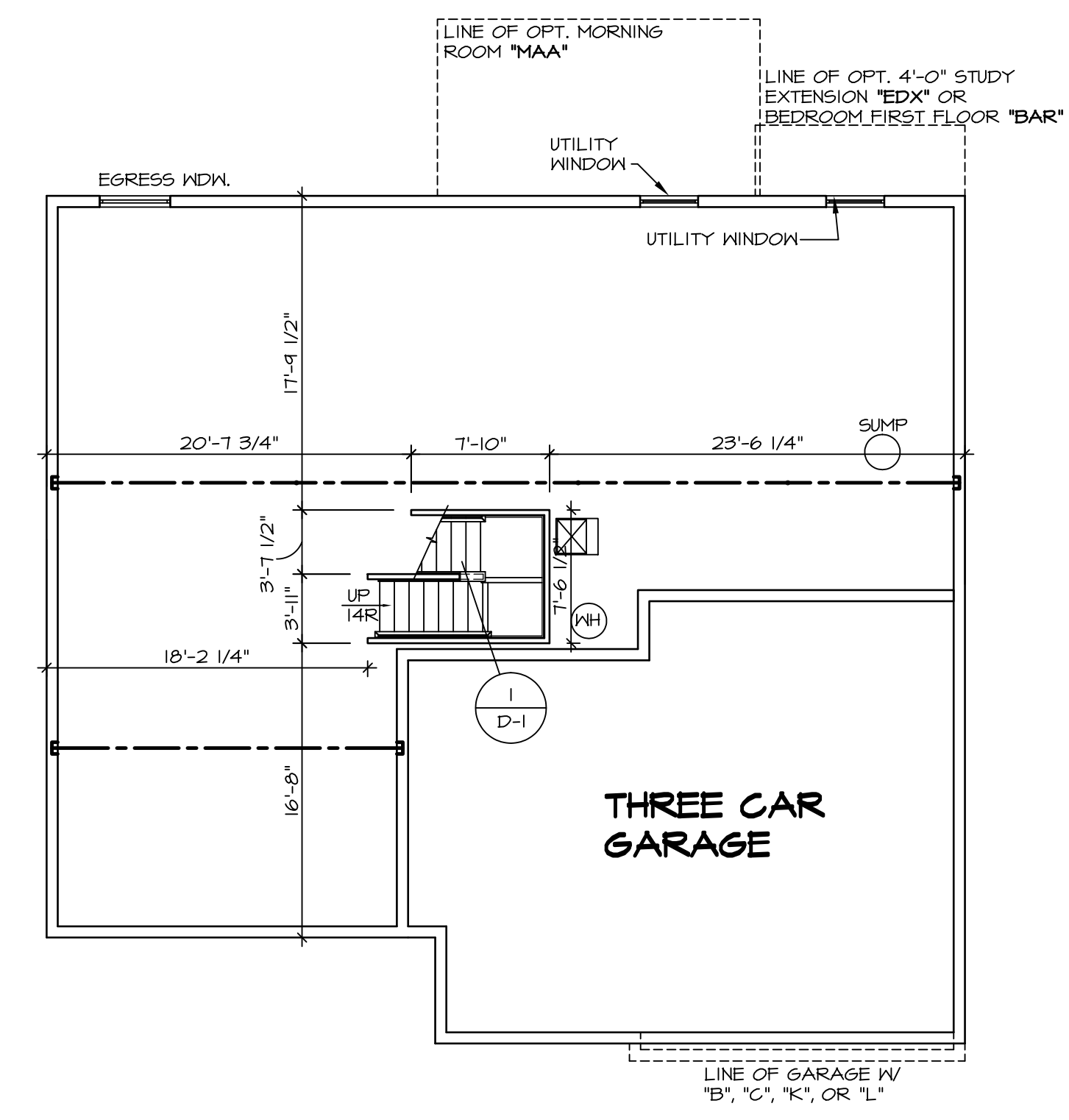
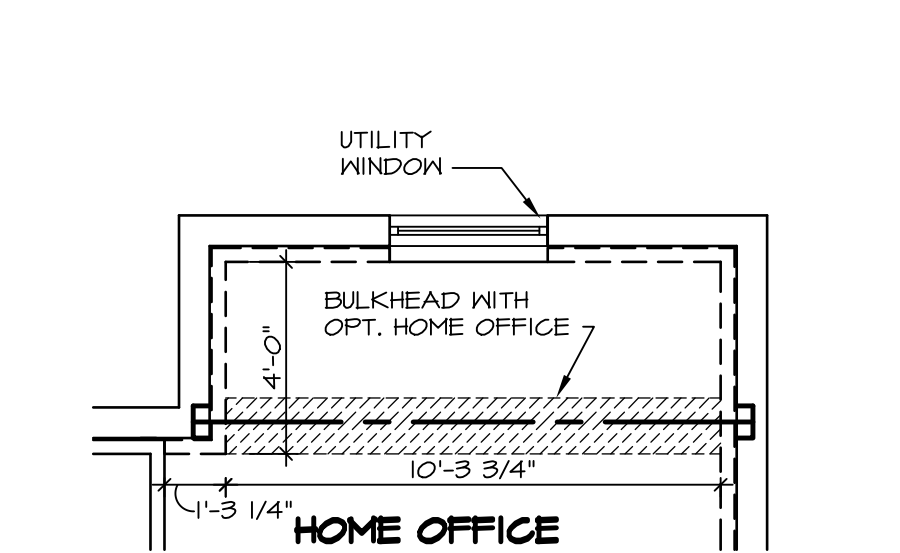
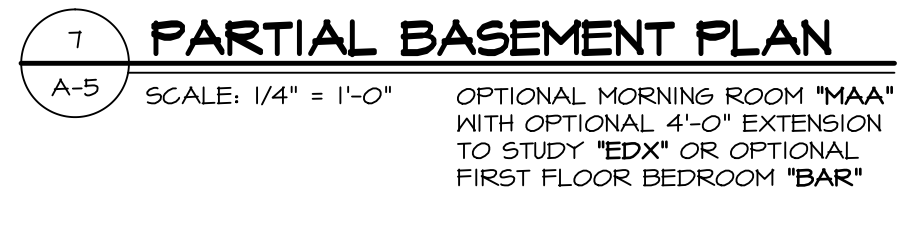
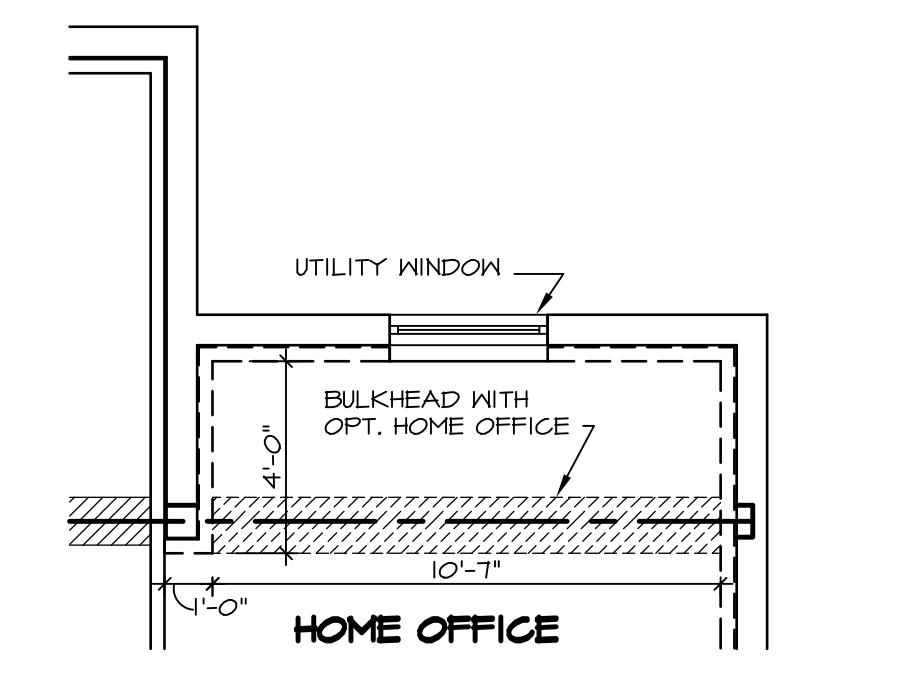
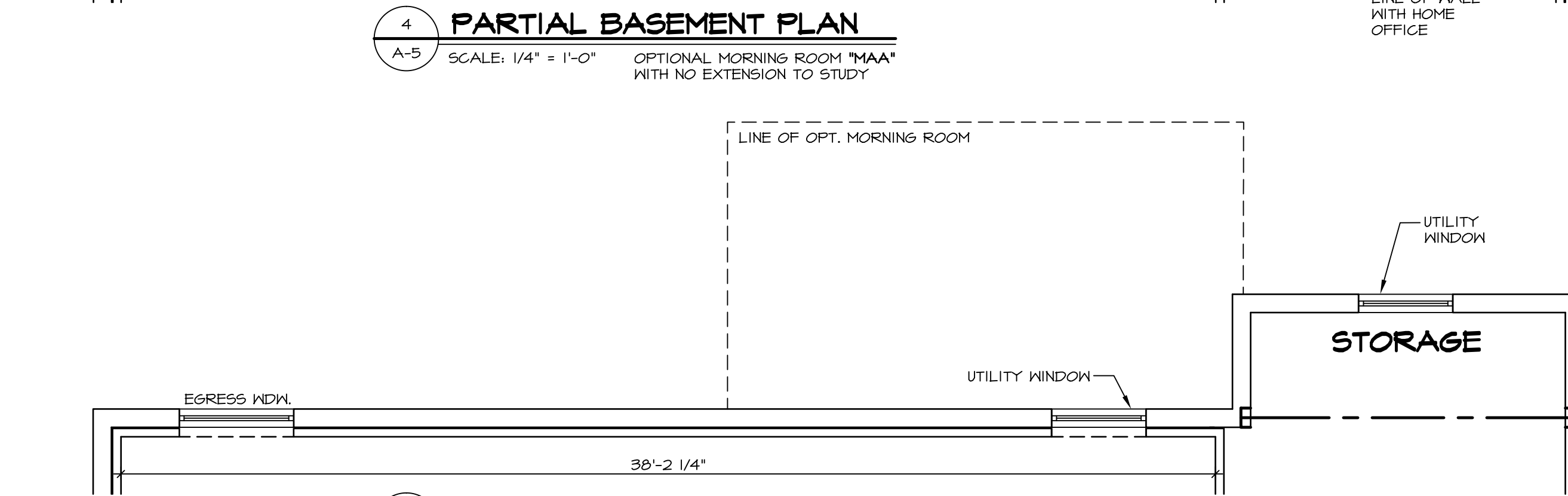
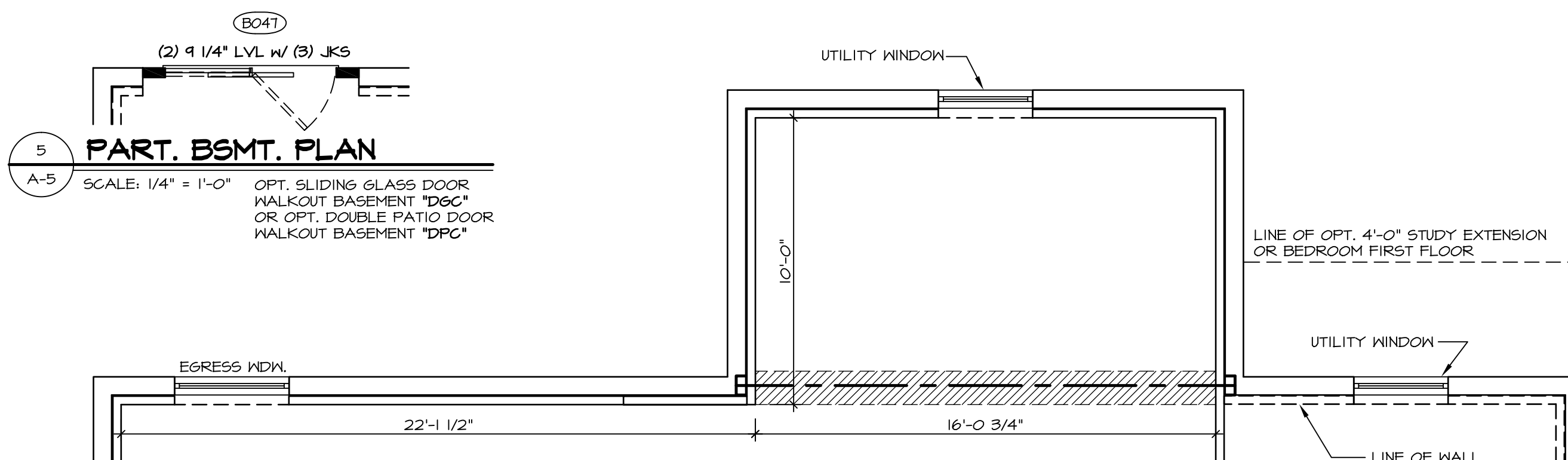
2
A-4
SCALE: 1/4" = 1'-0"
PARTIAL PLUMBING LAYOUT

SHEET NO.	MODEL	SET NO.	VERSION	DRAWN BY	DATE	OPTION
A-4	OLSEN	01	02	BDH	10/15/13	FBA
DRAWING TITLE		OPTION DESCRIPTION				
PLUMBING LAYOUT		FULL BASEMENT FOUNDATION				
23						



NVR, Inc., owner, expressly reserves its common law copyright and other property rights in these plans. These plans are not to be used, copied, reproduced, or otherwise disseminated without the express written consent of NVR, Inc.

REV. NO.	DATE	REMARKS
1	2/25/14	DSK - CREATED VERSION 01
2	12/29/14	DRH - CREATED VERSION 02
3	3/2/16	SKM - REVISED LOCATION OF TEE-UP PAR 30/171
4	3/28/17	CHB - REVISED LOCATION OF MAIN S.S. (PAR #44844)



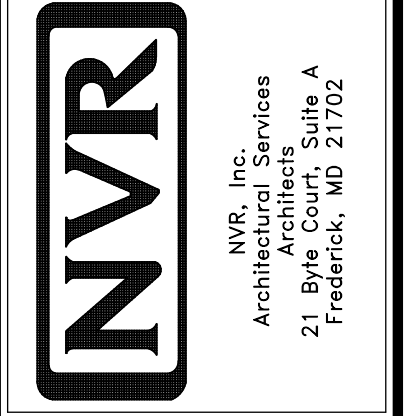
NOTES:
 1. TEMPERED GLASS SHOWER ENCLOSURE.
 2. REFER TO SHEET (D-10) FOR SHOWER DETAILS.
 3. ALL V5DB24-42 DRAWERS TO BE SET ON RIGHT HAND.

STRUCTURAL LEGEND

- (X) ENGINEERING PAGE NUMBER
- INDICATES BEARING FROM POINT-LOAD ABOVE
- REINFORCEMENT ADDED AT POINT-LOADS FROM ABOVE OR PER ENGINEERING. QUANTITY/SIZING VARIES PER DESIGN.

REV. NO.	DATE	REMARKS
1	2/6/14	DSK - PROTOTYPED REVISIONS
2	2/25/14	DSK - CREATED VERSION 01
3	5/1/14	DWG - TUB CONVERSION
4	12/29/14	DRH - CREATED VERSION 02
5	1/16/15	DRH - SHOWER DOOR PROJECT I12
6	8/7/17	D.L.R. - ADDED DIMENSIONS TO MET BAR HALF WALL (PAR 44440)

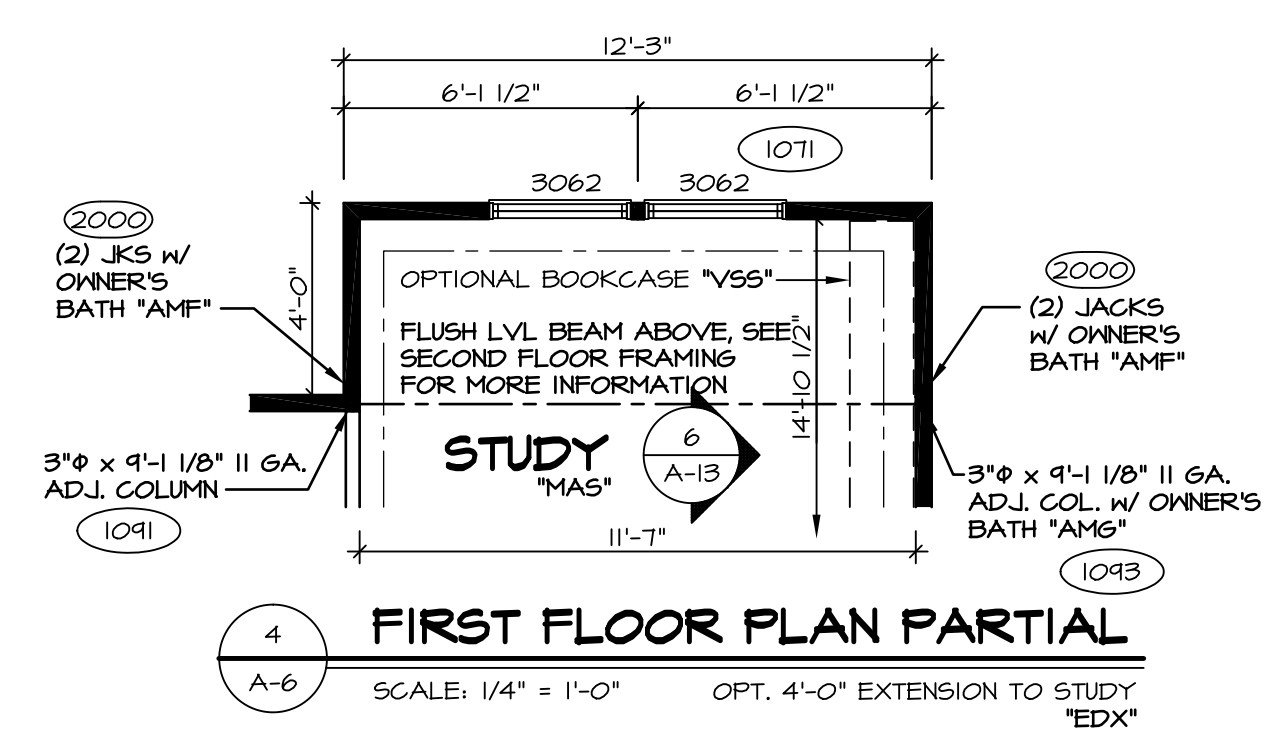
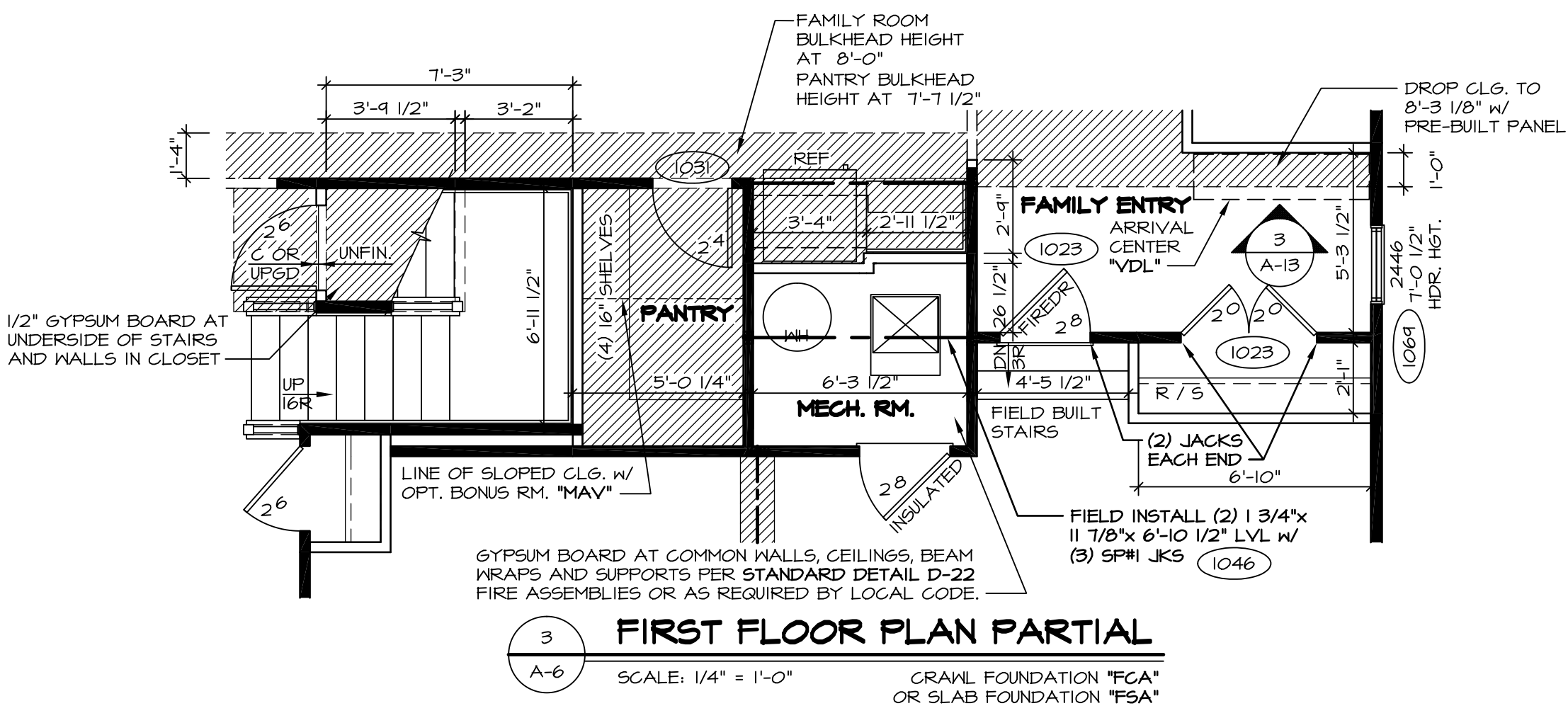
NVR, Inc., owner, expressly reserves its common law copyright and other property rights in these plans. These plans are not to be used, copied, reproduced, or otherwise disseminated without the written consent of NVR, Inc.



NVR, Inc. Services
 Architects
 21 Bye Court, Suite A
 Frederick, MD 21702

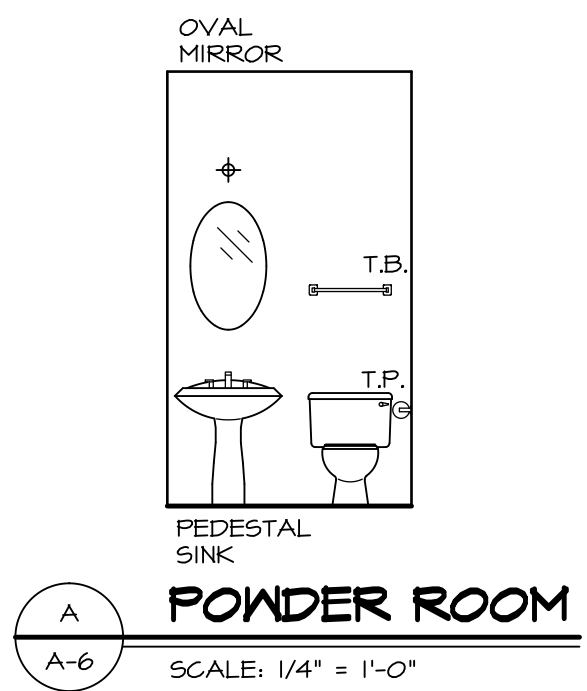
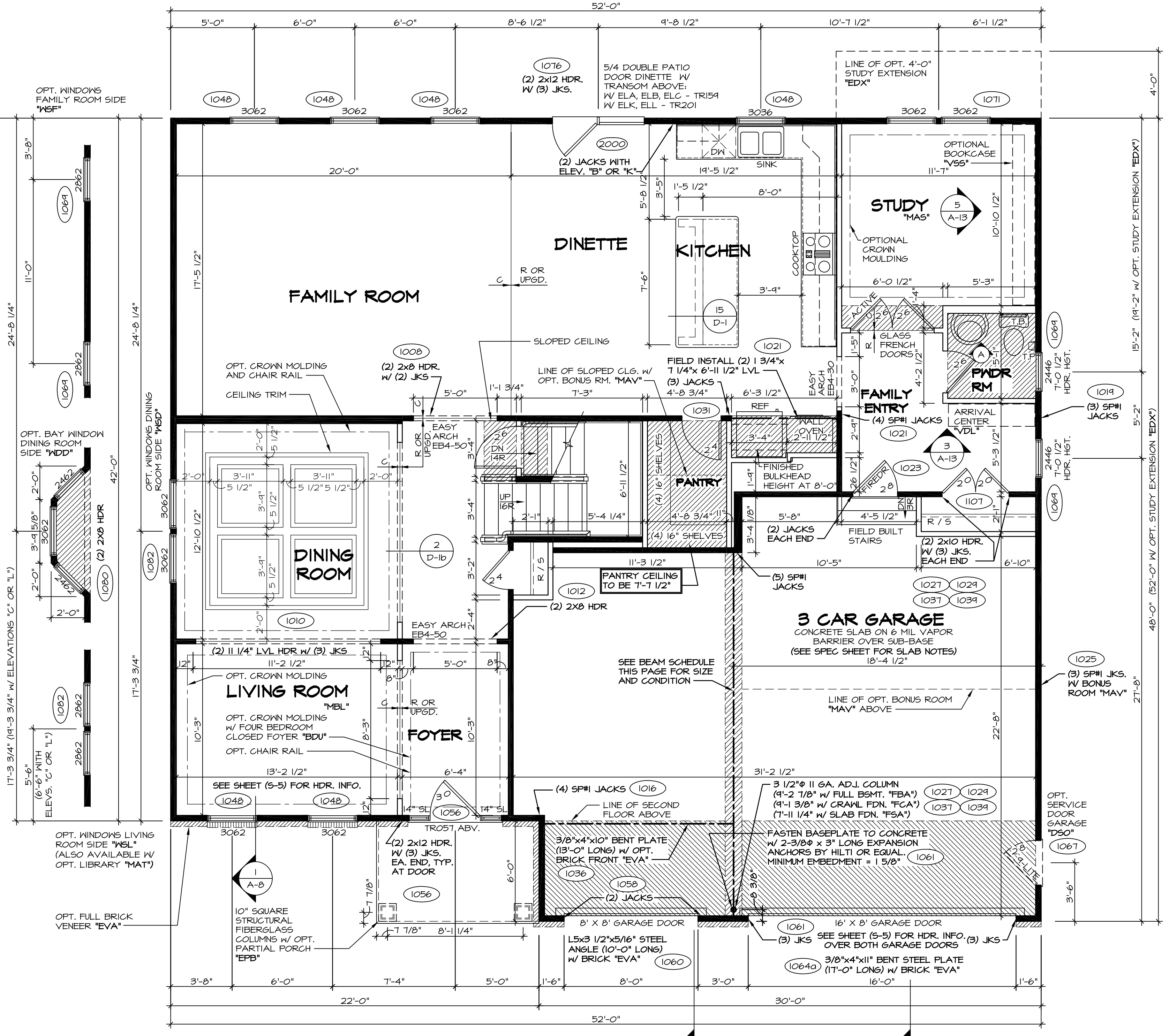
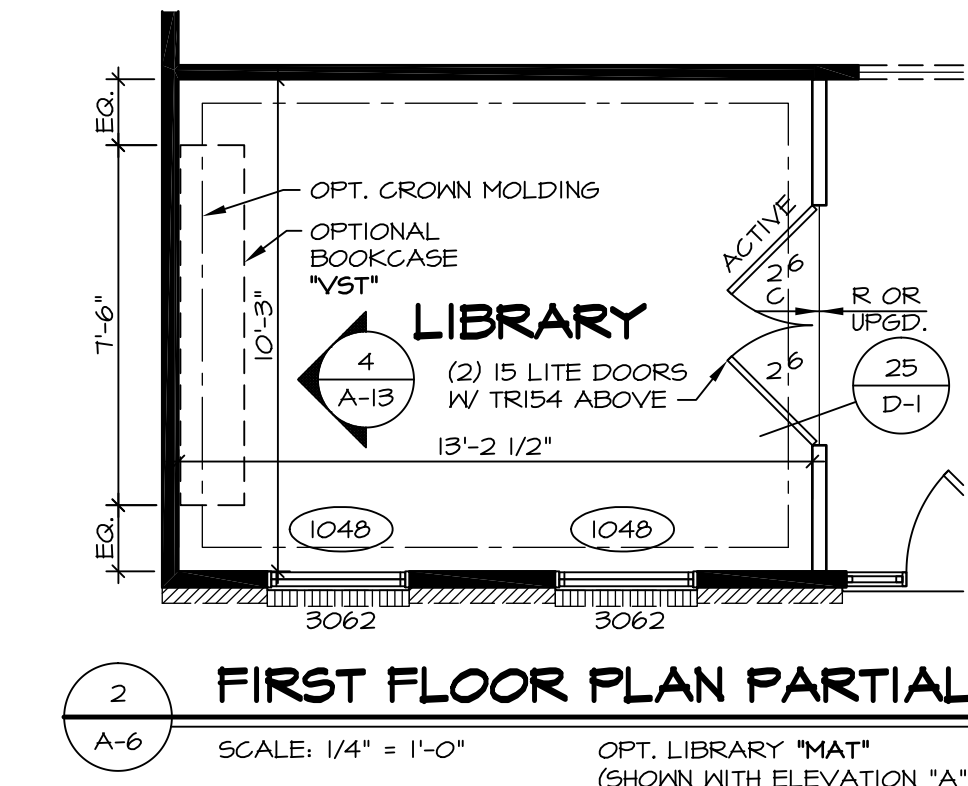
MODEL	SET NO.	VERSION	DRAWN BY	DATE	OPTION
OLSEN	01500	02	DAG	10/14/2018	FBA

DRAWING TITLE: BASEMENT PLAN
 OPTION DESCRIPTION: FULL BASEMENT FOUNDATION



BEAM SCHEDULE

W/ ELEVATION "A"	W/ ELEVATIONS "B","C","K","L"
W12x 14x 21'-11 1/2" STEEL BEAM WITHOUT BRICK AND WITHOUT BONUS ROOM (1029)	W12x 22x 22'-11 1/2" STEEL BEAM WITHOUT BRICK AND WITHOUT BONUS ROOM (1111)
W12x 26x 21'-11 1/2" STEEL BEAM WITHOUT BRICK AND WITH BONUS ROOM (1027)	W12x 30x 22'-11 1/2" STEEL BEAM WITHOUT BRICK AND WITH BONUS ROOM (1109)
W12x 22x 21'-11 1/2" STEEL BEAM WITH FULL BRICK AND WITHOUT BONUS ROOM (1039)	W12x 26x 22'-11 1/2" STEEL BEAM WITH FULL BRICK AND WITHOUT BONUS ROOM (1115)
W12x 30x 21'-11 1/2" STEEL BEAM WITH FULL BRICK AND WITH BONUS ROOM (1037)	W12x 35x 22'-11 1/2" STEEL BEAM WITH FULL BRICK AND WITH BONUS ROOM (1113)



- NOTES:**
- 1. ALL HEADERS ARE (2) 2x6 W/ 2x4 WALLS OR (3) 2x6 W/ 2x6 WALLS, UNLESS OTHERWISE NOTED.
 - 2. ALL HEADERS TO HAVE (1) 2x4 OR 2x6 JACK EACH END, UNLESS OTHERWISE NOTED.
 - 3. ALL EXTERIOR WALLS TO BE 4" AND ALL INTERIOR WALLS TO BE 3 1/2", UNLESS OTHERWISE NOTED.
 - 4. HATCHED AREAS INDICATE DROPPED CEILING.
 - 5. SEE "BRACED WALL PANEL DETAIL SHEET" FOR SPECIAL WALL FRAMING LOCATIONS AND HEADER SIZES, IF APPLICABLE.
 - 6. SEE STANDARD DETAIL SHEET D-1 FOR TRIM OPTIONS (21 / D-1) AND DETAILS.
 - 7. ALL WINDOW HEADER HEIGHTS TO BE 8'-0" 1/2" UNLESS OTHERWISE NOTED.

REMARKS

3/1/16 CLS - REVISED DIM. KITCHEN ISLAND PANELS TO MATCH KITCHEN (PAR ID 30078)
 6/15/16 SBS - PAR #9447 - ADDED BULKHEAD AND DROPPED CEILING FOR HOOD VEIL
 6/21/16 JAB - REVISED BULKHEAD NOTE IN KITCHEN TO SAY FINISHED HEIGHT (PAR #9493)
 10/22/16 JBS - REVISED BENT PLATE LENGTH (PAR #42592)
 10/24/16 DRH - ADDED THE MORE EASY ARCH, CLARIFIED FOTER TRIM (PAR ID 28940)
 12/29/16 DRH - ADDED REVISIONS
 2/17/17 RLK - ADIT REVISIONS
 7/27/15 SKK - SHIFTED WALL BEHIND OVEN 2" FOR BULKHEAD PAR 34209
 11/08/15 DLB - ADDED STEEL COLUMN BASE PLATE CONNECTION NOTE (56271)

REV. NO. DATE

10 3/1/16
 11 6/15/16
 12 6/21/16
 13 10/22/16
 14 10/24/16
 15 12/29/16
 16 2/17/17
 17 7/27/15
 18 11/08/15

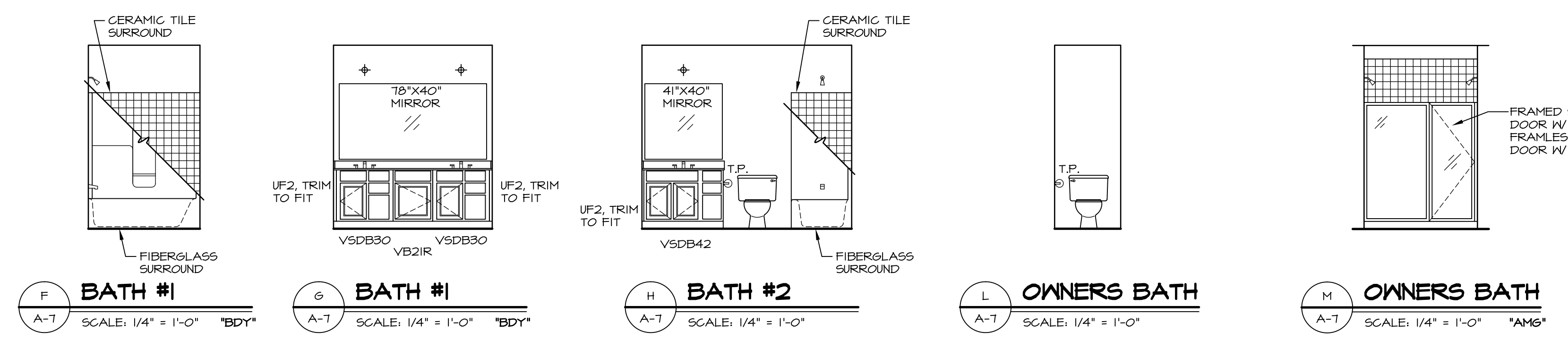
DESCRIPTION

1. NVR, Inc., owner, expressly reserves its common law copyright and other property rights in these plans. These plans are not to be copied, reproduced, or transmitted in any form or by any means, electronic or mechanical, including photocopying, recording, or by any information storage and retrieval system, without first obtaining the expressed written consent of NVR, Inc.

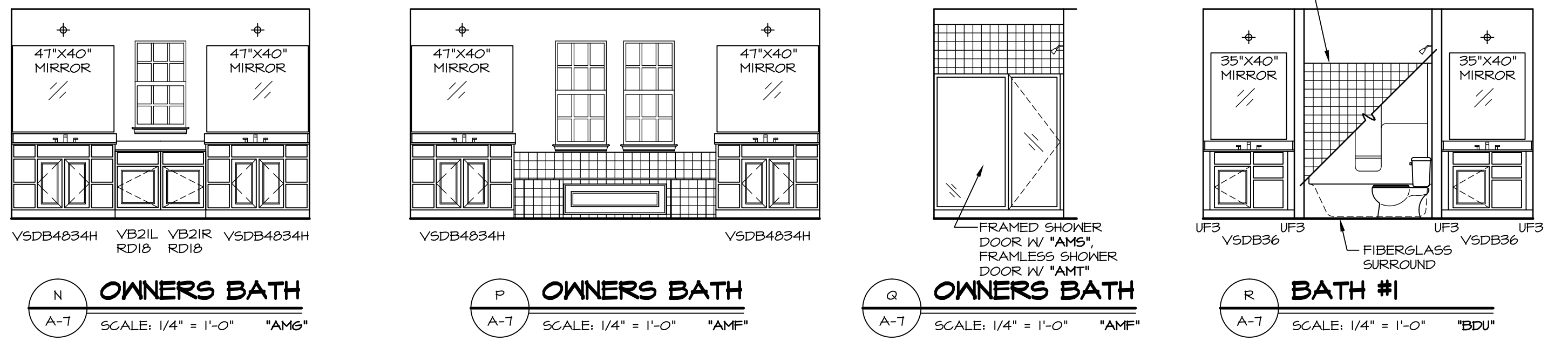
NVR
 NVR, Inc. Services
 Architects
 21 Bye Court, Suite A
 Frederick, MD 21702

SET NO. OL500
 VERSION 02
 DRAWN BY: BEB
 DATE: 10/1/2013
 OPTION

MODEL: OLSEN
 DRAWING TITLE: FIRST FLOOR PLAN
 SHEET NO.: A-6
 27



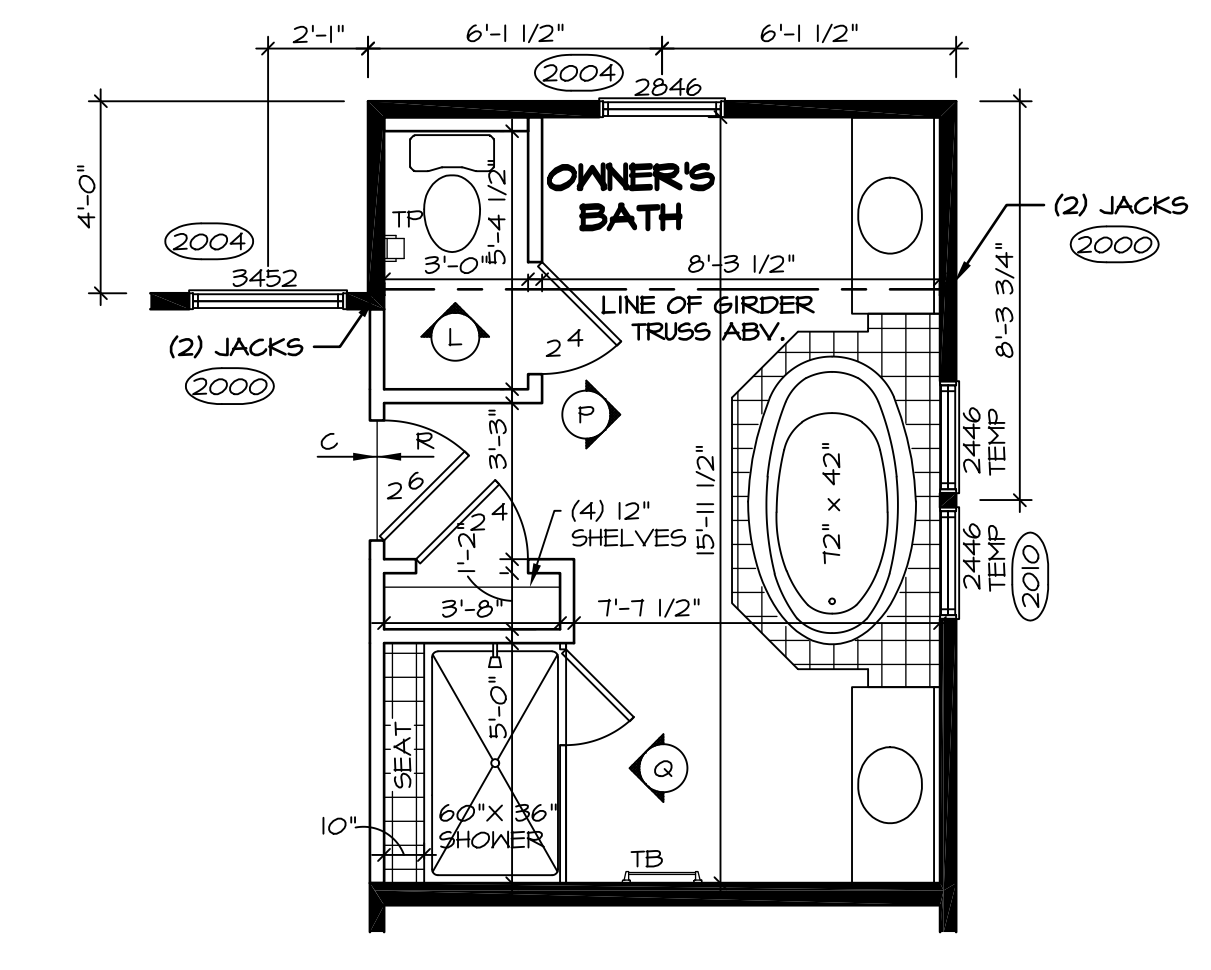
F BATH #1 SCALE: 1/4" = 1'-0" *BDY*
G BATH #1 SCALE: 1/4" = 1'-0" *BDY*
H BATH #2 SCALE: 1/4" = 1'-0"
L OWNERS BATH SCALE: 1/4" = 1'-0"
M OWNERS BATH SCALE: 1/4" = 1'-0" *AM6*



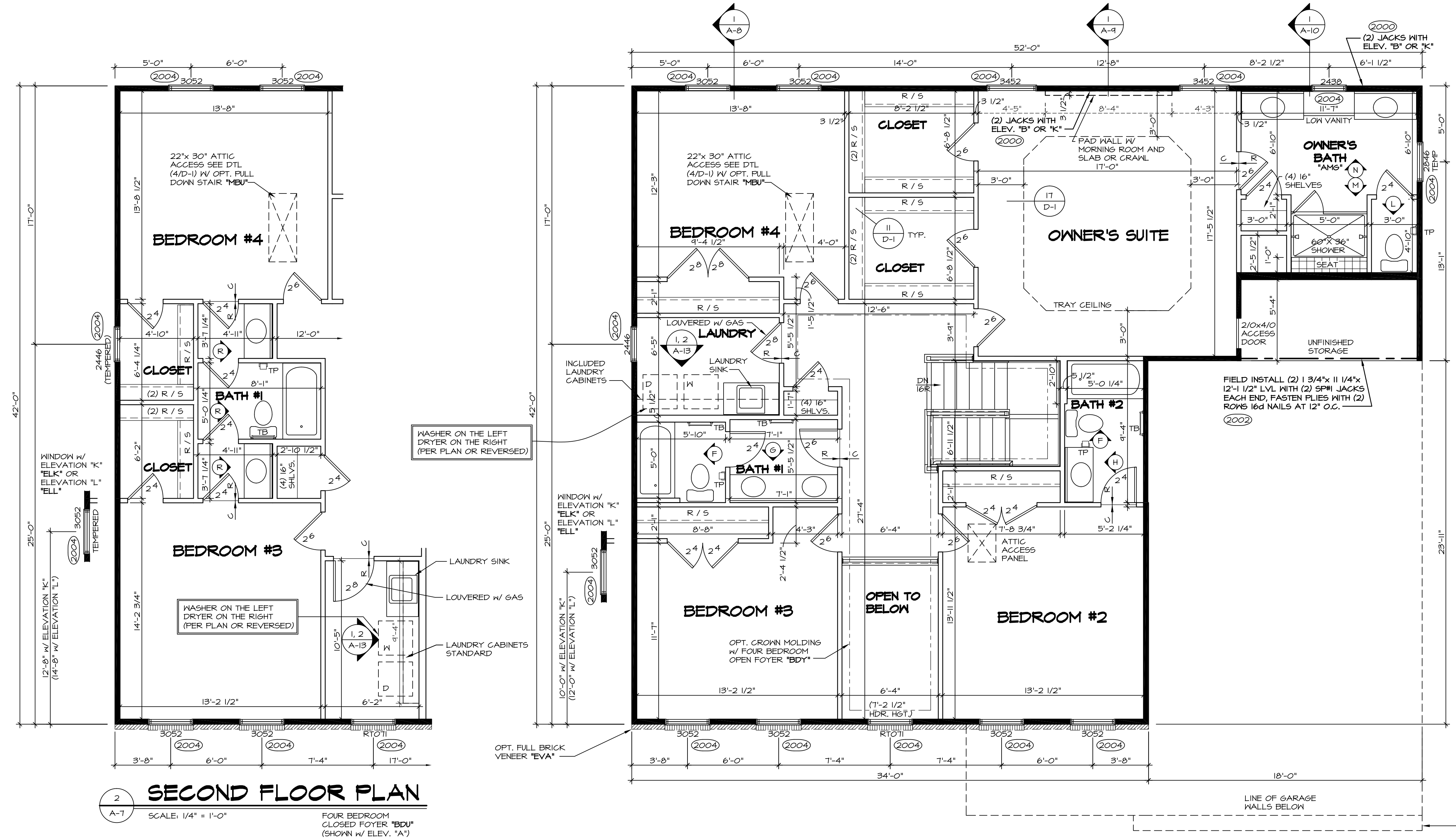
N OWNERS BATH SCALE: 1/4" = 1'-0" *AM6*
P OWNERS BATH SCALE: 1/4" = 1'-0" *AM6*
Q OWNERS BATH SCALE: 1/4" = 1'-0" *AM6*
R BATH #1 SCALE: 1/4" = 1'-0" *BDY*

NOTES:

- TEMPERED GLASS SHOWER ENCLOSURE.
- TUB ACCESS PANELS PROVIDED AS NEEDED, ALL MATERIALS BY DIVISION.
- REFER TO SHEET (D-10) FOR TUB AND SHOWER DETAILS.
- ALL VSD824-42 DRAINERS TO BE SET ON RIGHT HAND.
- WINDOW GRILL PATTERNS SHOWN MAY VARY PER ELEVATION.



3 SECOND FLOOR PLAN SCALE: 1/4" = 1'-0" UPGRADED OWNERS BATH *AM6* (ONLY AVAILABLE WITH 4' STUDY EXT. *BDY* OR OPT. BEDROOM FIRST FLOOR *BAR*)



2 SECOND FLOOR PLAN SCALE: 1/4" = 1'-0" FOUR BEDROOM CLOSED FOYER *BDY* (SHOWN W/ ELEV. *A*)

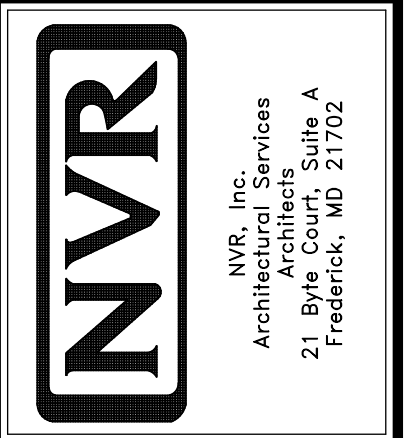
1 SECOND FLOOR PLAN SCALE: 1/4" = 1'-0" FOUR BEDROOM OPEN FOYER *BDY*

NOTES:

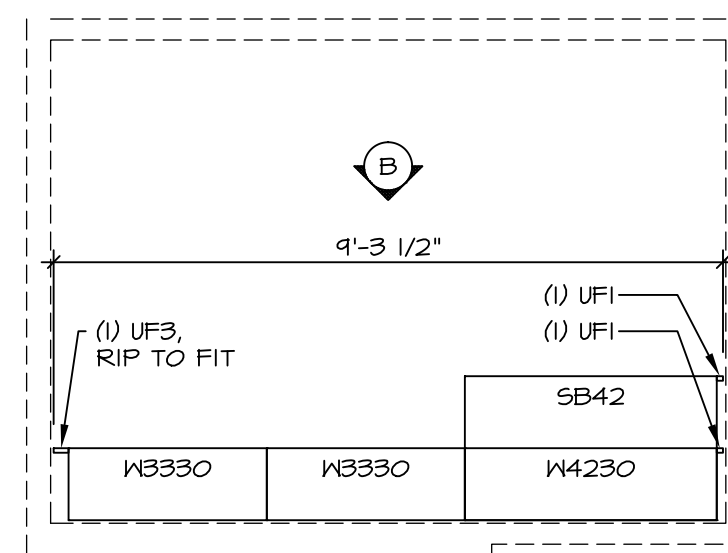
- BEARING WALL
 - NON BEARING WALL
 - ENGINEERING PAGE NUMBER
 - INDICATES BEARING FROM POINT-LOAD ABOVE
- ALL HEADERS ARE (2) 2x6 W/ 2x4 WALLS OR (3) 2x6 W/ 2x6 WALLS, UNLESS OTHERWISE NOTED.
 - ALL HEADERS TO HAVE (1) 2x4 OR 2x6 JACK EACH END, UNLESS OTHERWISE NOTED.
 - ALL EXTERIOR WALLS TO BE 4" AND ALL INTERIOR WALLS TO BE 3 1/2", UNLESS OTHERWISE NOTED.
 - HATCHED AREAS INDICATE DROPPED CEILING.
 - SEE "BRACED WALL PANEL DETAIL SHEET" FOR SPECIAL WALL FRAMING LOCATIONS AND HEADER SIZES, IF APPLICABLE.
 - SEE STANDARD DETAIL SHEET D-1 FOR TRIM OPTIONS (21 / D-1) AND DETAILS.

REV. NO.	DATE	REMARKS
1	6/1/16	CLS - REVISED THE LAUNDRY SINK TO BE SHOWN AS STANDARD (PAR #3641)
2	6/2/16	JAB - MOVED CLOSED FOYER LAUNDRY RM DOOR 1-1/2" FOR I.P. TRIM (PAR #3839)
3	6/2/16	J65 - ADDED PAD WALL TO OWNERS BEDROOM W/ MANTAFCA (PAR #4280)
4	6/15/16	S85 - PAR #10000 - REVISED LAUNDRY ROOM HALL TO 2'6" W/ BDU
5	6/17/16	RLK - ADPT REVISIONS
6	6/30/16	JLR - REVISED BATH ELEV. 'R' FROM 42" VANITIES TO 36" (PAR #39610)
7	7/16/16	DLA - SHOWER DOOR PROJECT I12
8	11/20/15	J65 - REVISED TRIM NOTE AT OPEN FOYER (PAR #3644)
9	5/11/16	S85 - REVISED BEDROOMS #2 & #3 DOOR TO FIT TRIM (PAR #3412)

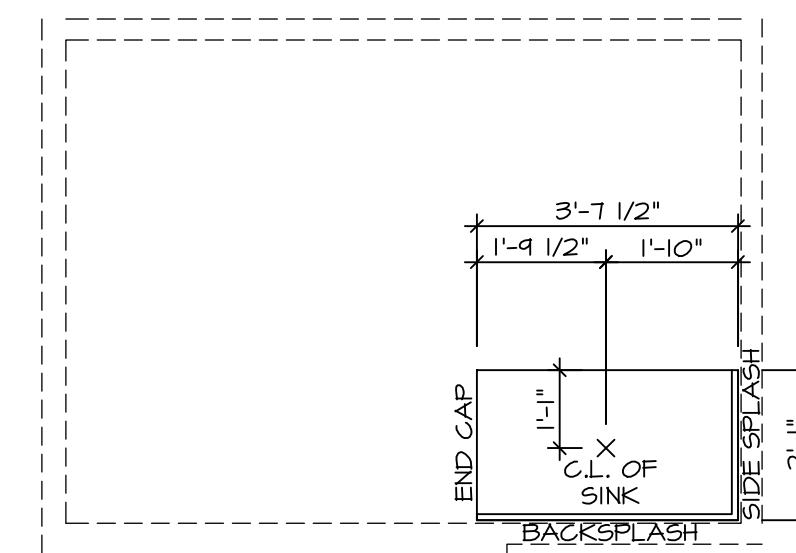
REV. NO.	DATE	REMARKS
1	6/1/16	NVR, Inc., owner, expressly reserves its common law copyright and other property rights in these plans. These plans are not to be copied, reproduced, or transmitted in any form or by any means, nor are they to be assigned to any third party, without first obtaining the expressed written consent of NVR, Inc.



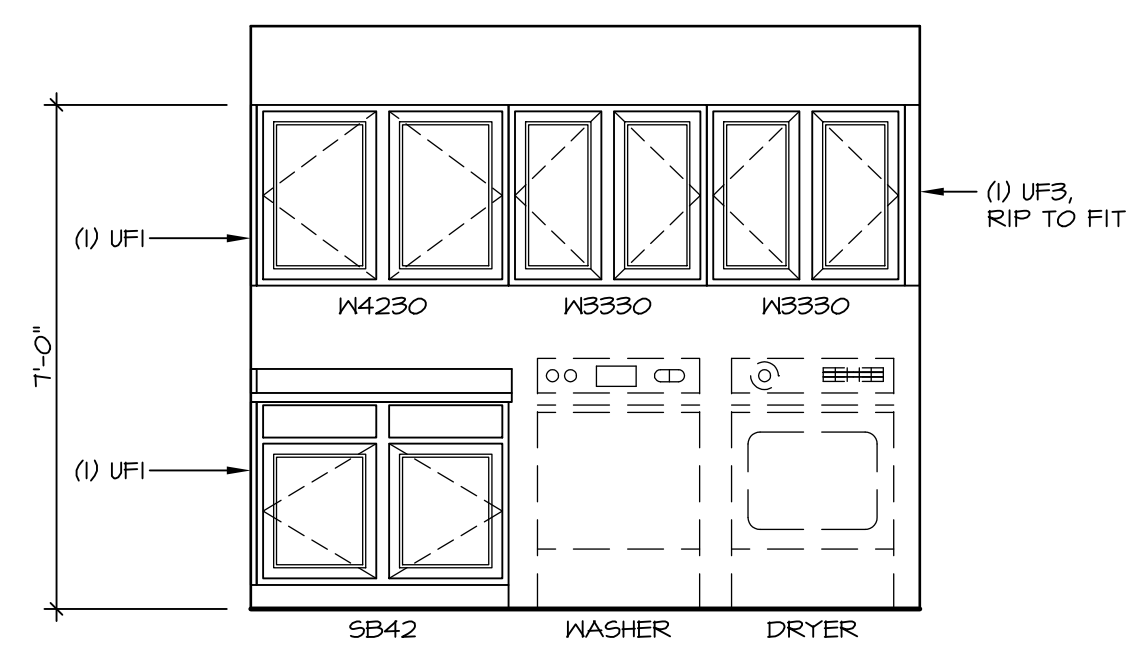
MODEL	OPTION DESCRIPTION
OLSEN	OPTION
A-7	29



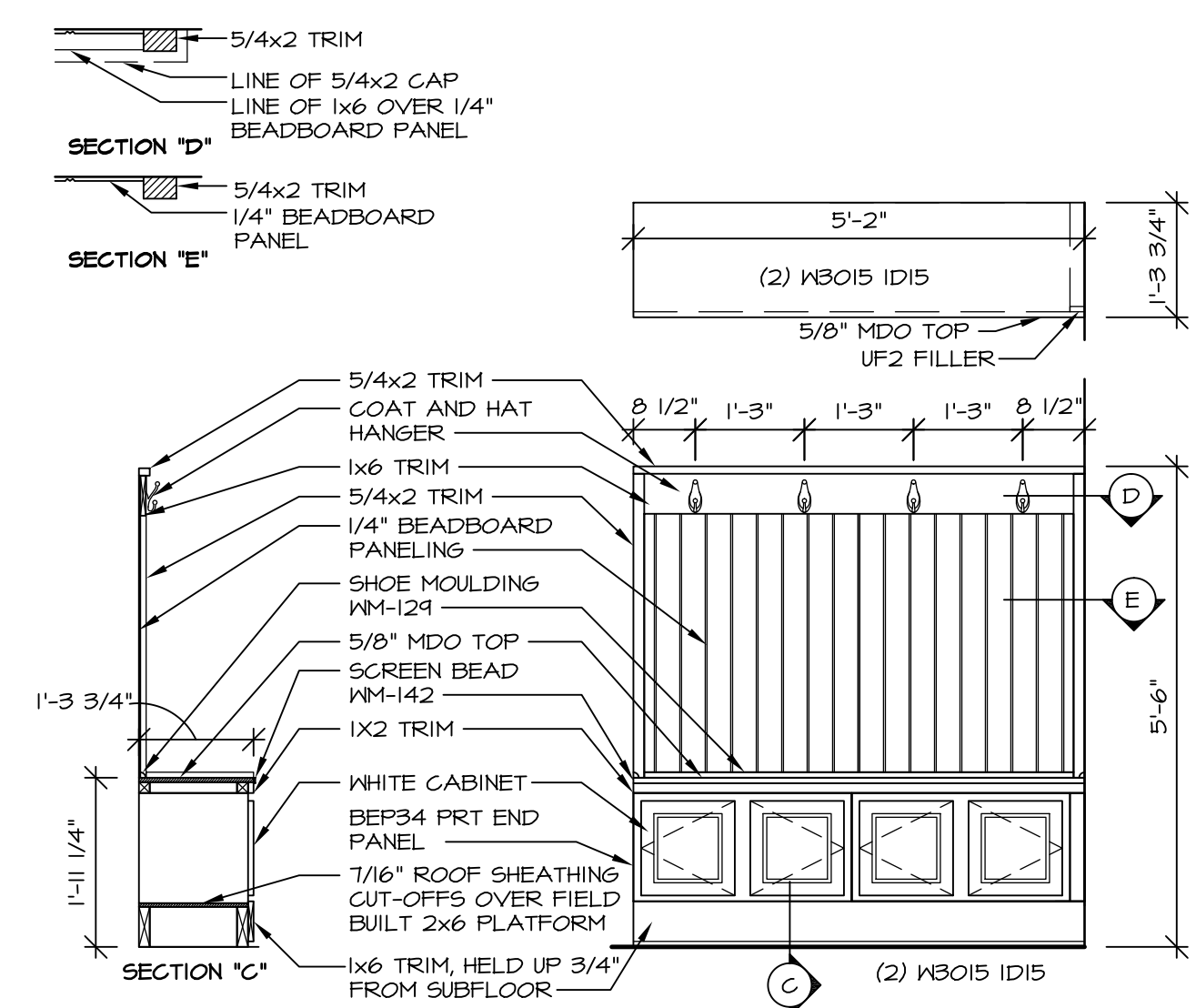
CABINET PLAN / KC - 4157
SCALE: 3/8" = 1'-0"



COUNTERTOP PLAN / KT - 4157
SCALE: 3/8" = 1'-0"

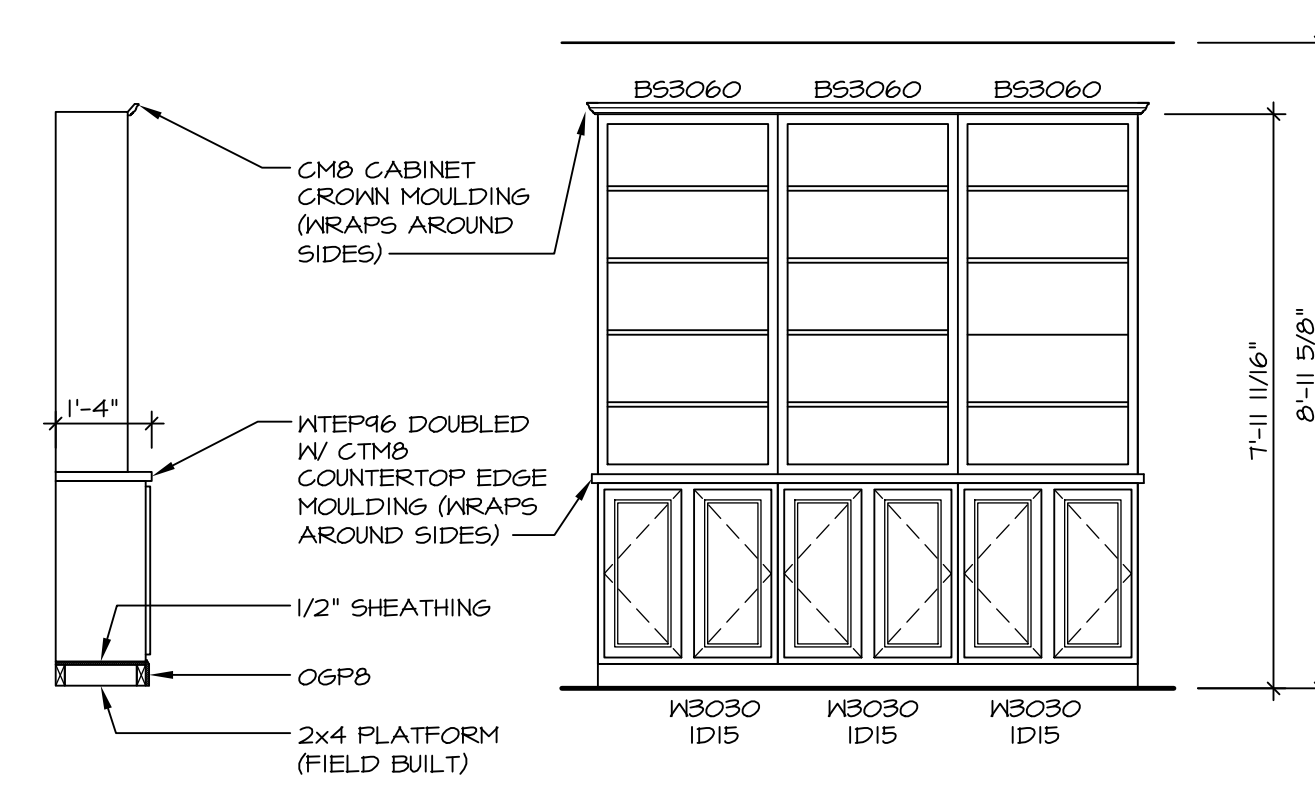
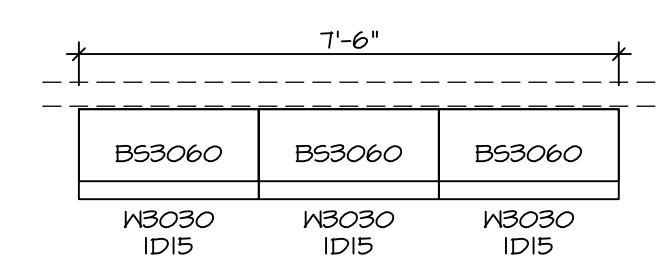


ELEVATION "B"
SCALE: 3/8" = 1'-0"

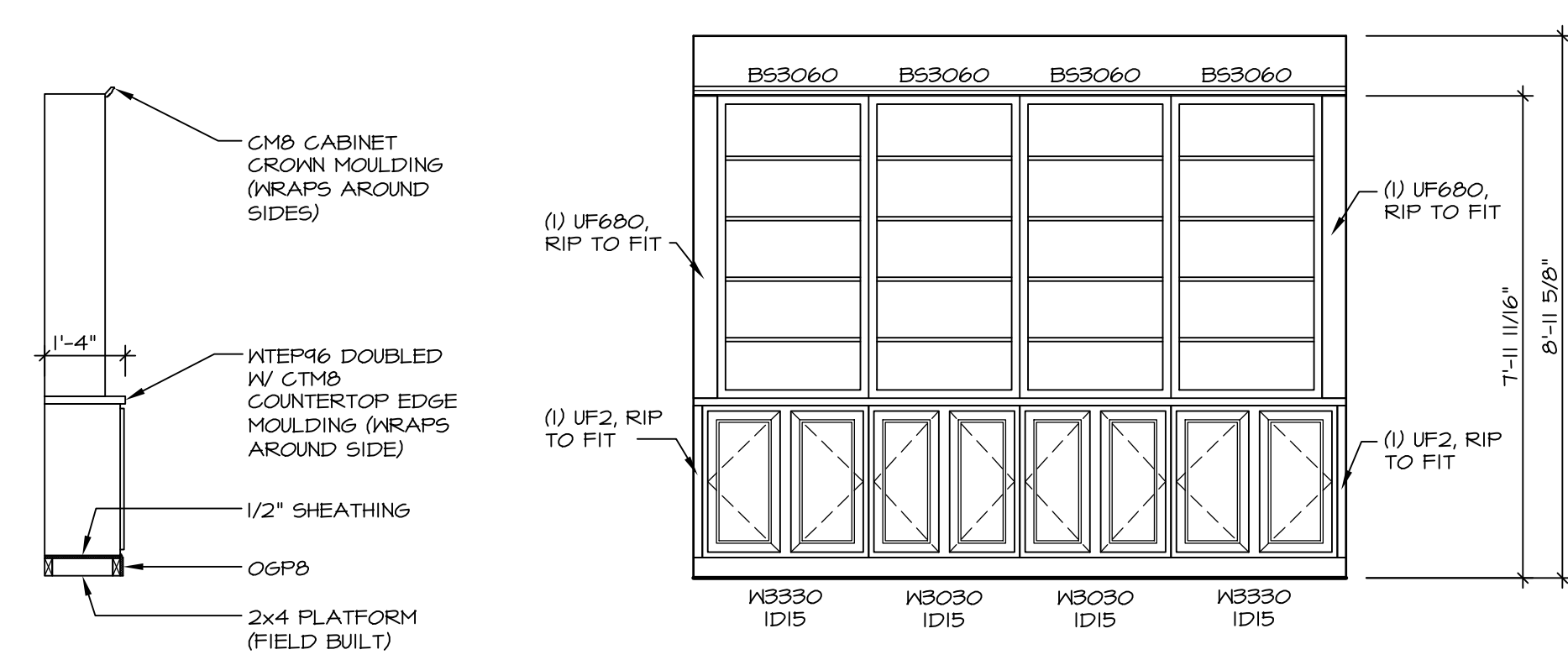
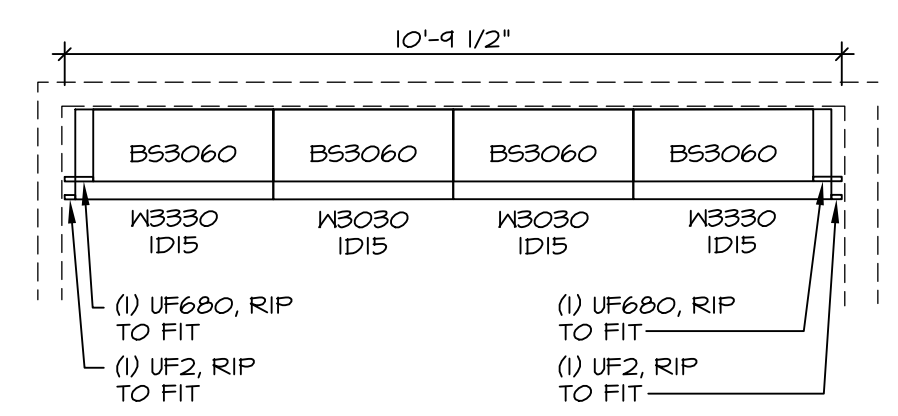


ARRIVAL CENTER DETAIL
SCALE: 1/2" = 1'-0"

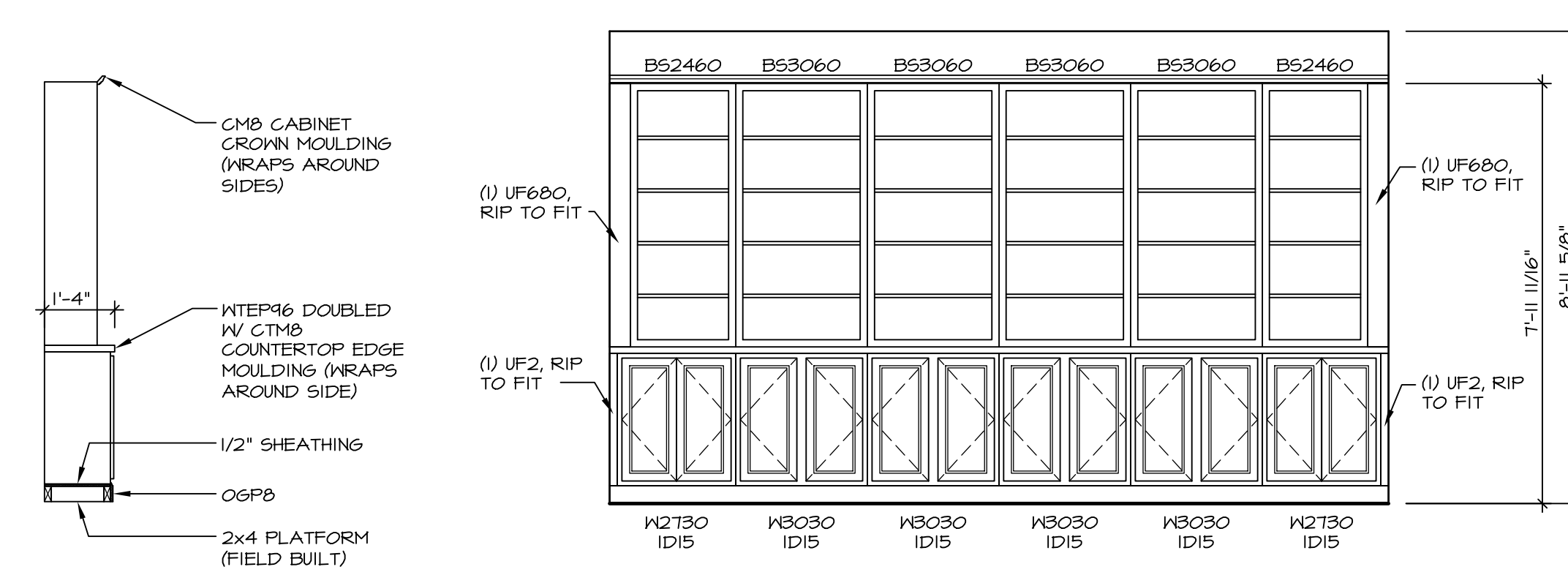
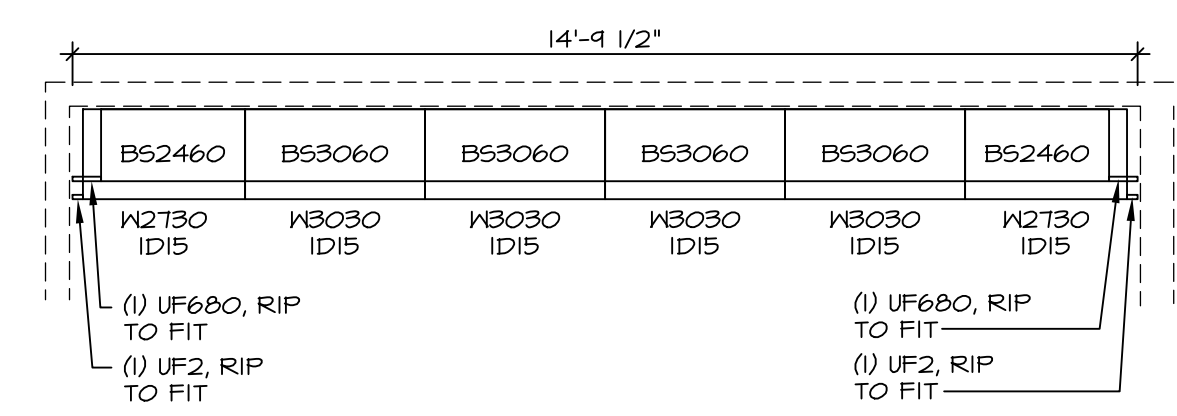
NOTE:
ALL DIMENSIONS ARE
FINISHED DIMENSIONS,
UNLESS OTHERWISE NOTED



CABINET PLAN / KC - 4158
SCALE: 3/8" = 1'-0"

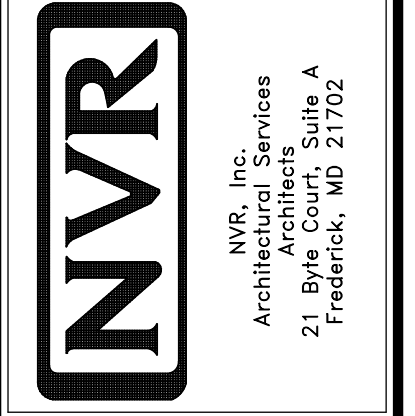


CABINET PLAN / KC - 4159
SCALE: 3/8" = 1'-0"

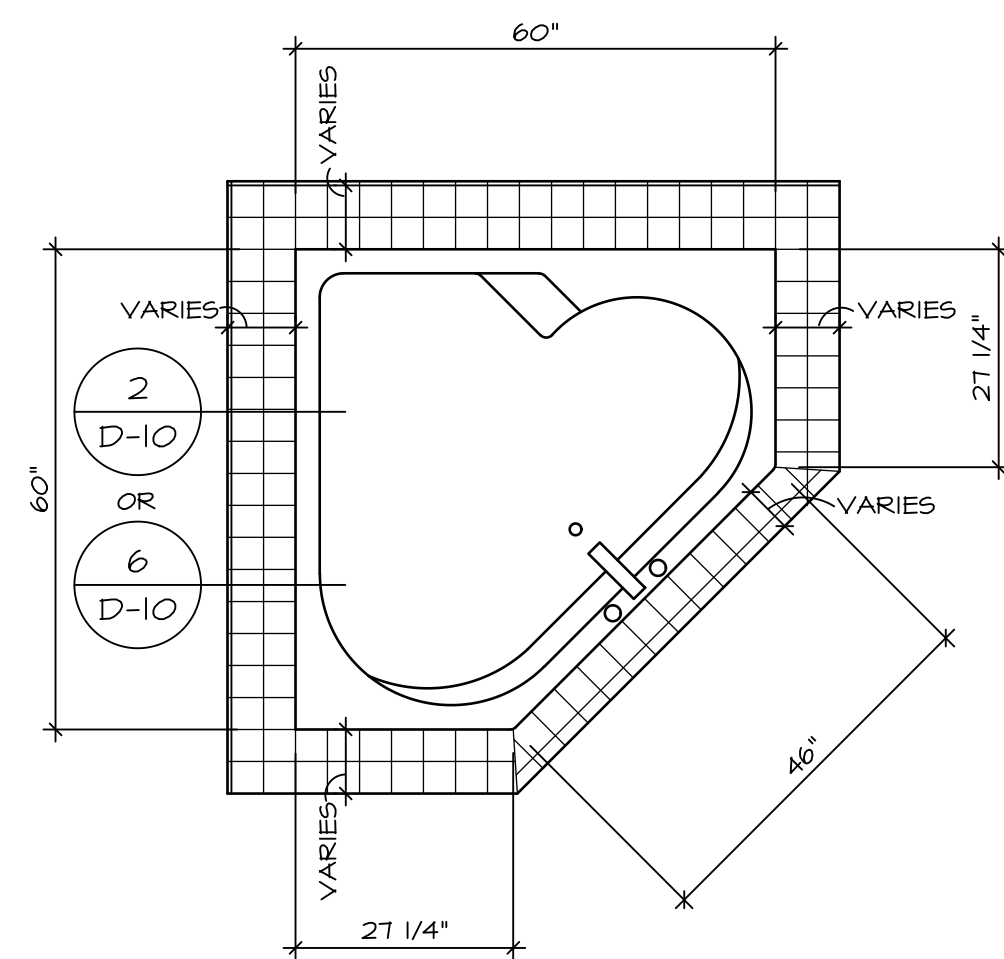


CABINET PLAN / KC - 4160
SCALE: 3/8" = 1'-0"

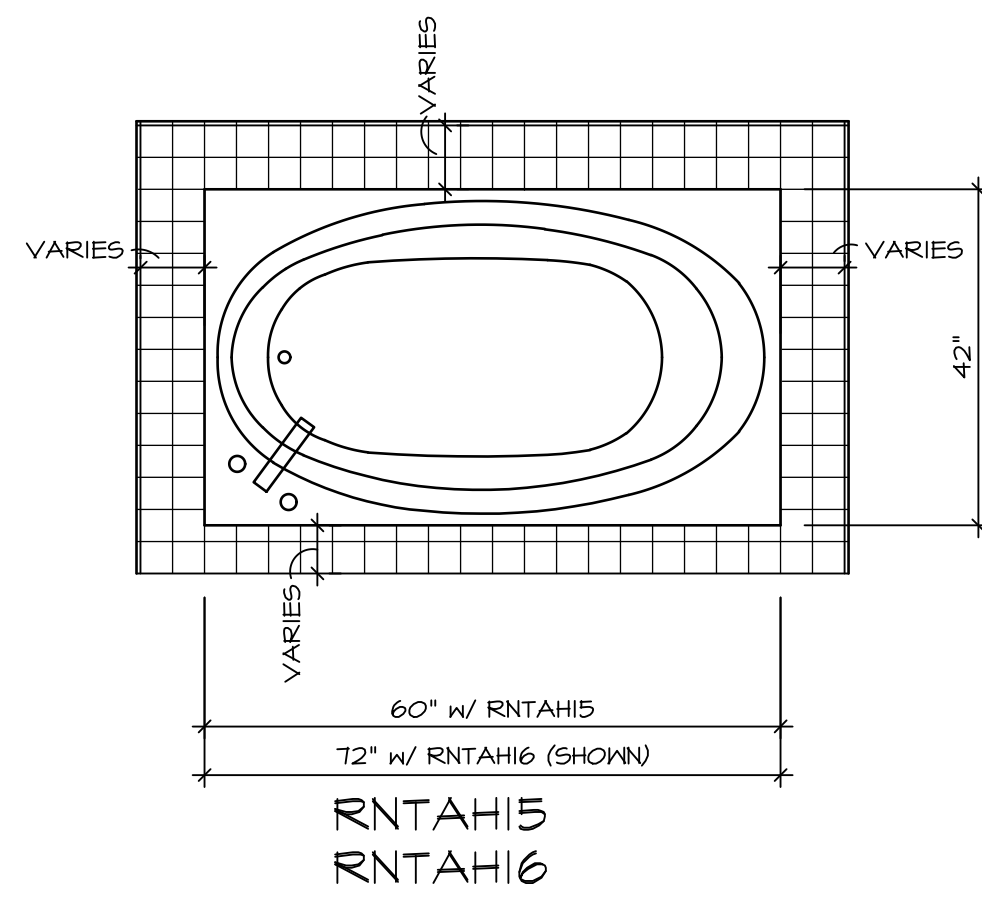
REV. NO.	DATE	REMARKS
1	2/25/14	DSK - CREATED VERSION 01
2	7/14/14	ALH - REVISED ARRIVAL CENTER (DNR #114)
3	12/29/14	DRH - CREATED VERSION 02
4	6/1/16	CLS - REVISED THE LAUNDRY SINK TO BE SHOWN AS STANDARD (PAR #3641)



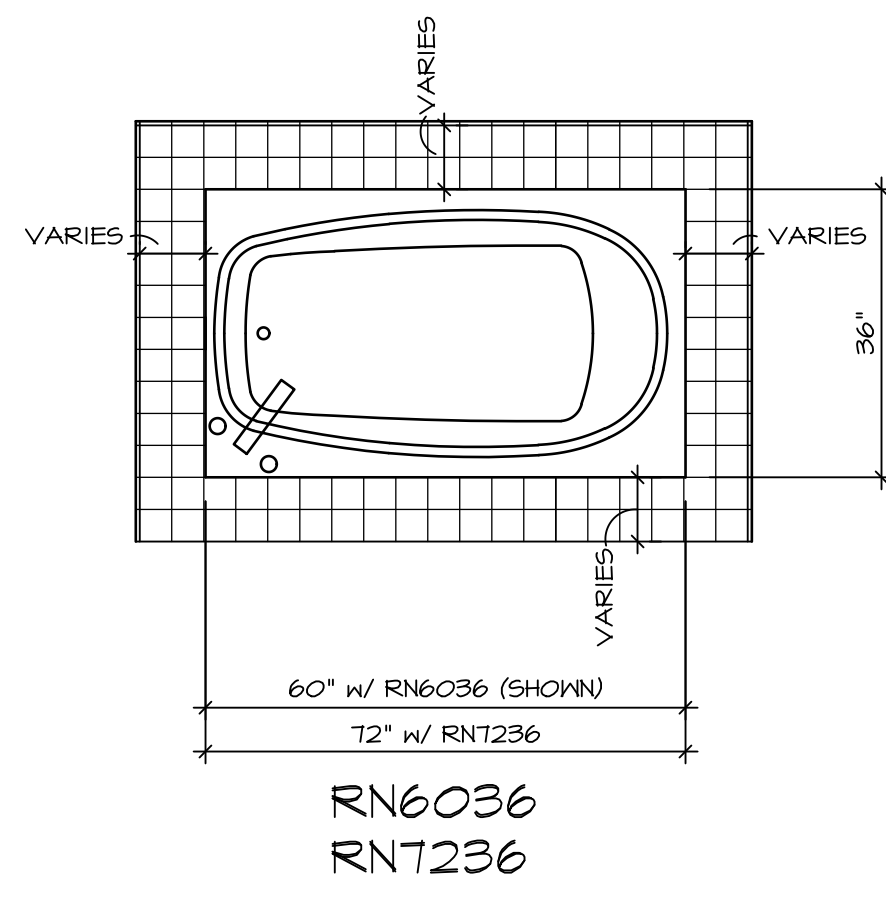
SET NO. 01.500	VERSION 02	DRAWN BY: DRA	DATE: 10/10/13	OPTION	VST, V55
MODEL: OLSEN	DRAWING TITLE: CABINET AND COUNTERTOP LAYOUT	OPTION DESCRIPTION: LAUNDRY CABINETS BOOKCASE LIBRARY / BOOKCASE STUDY ARRIVAL CENTER	SHEET NO. A-13	38	



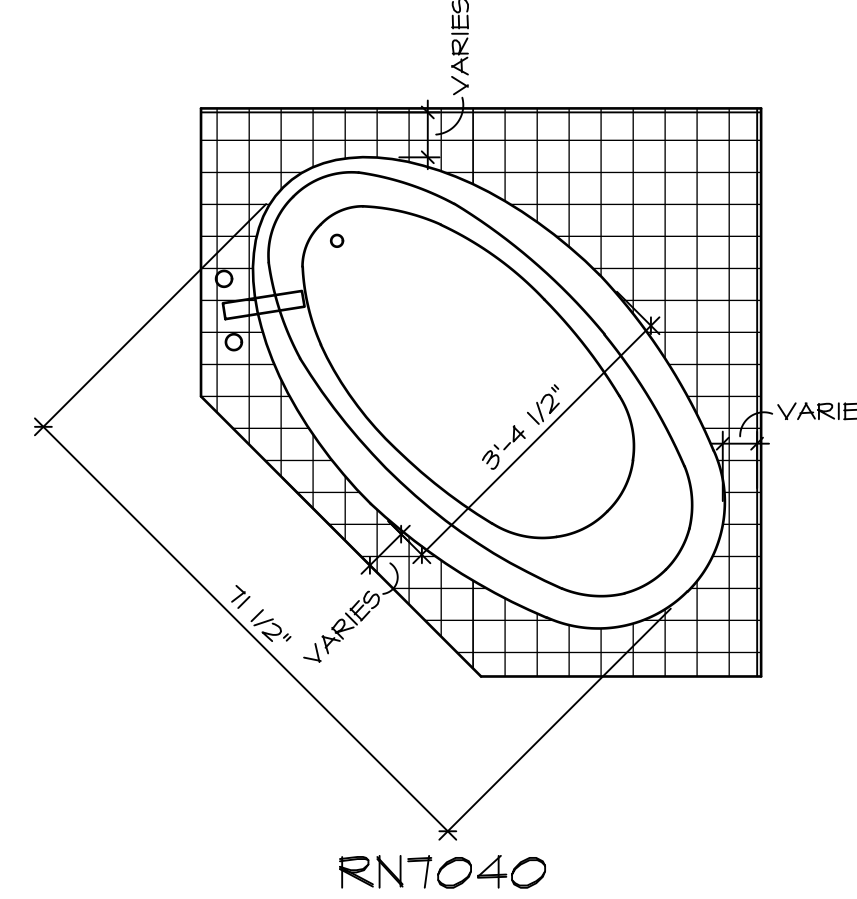
RN6060



RNTAH15
RNTAH16



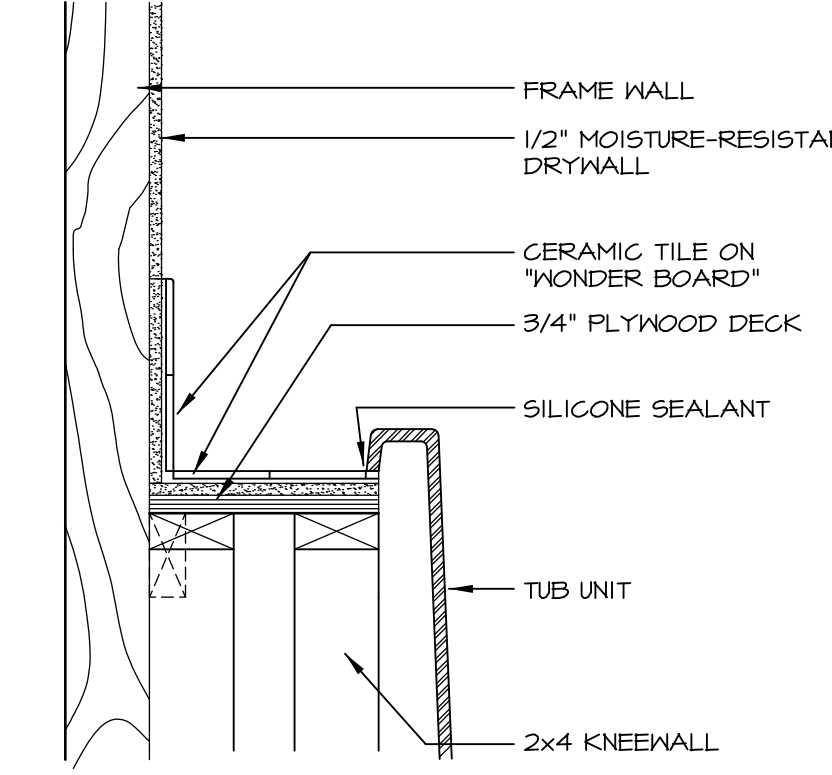
RN6036
RNT236



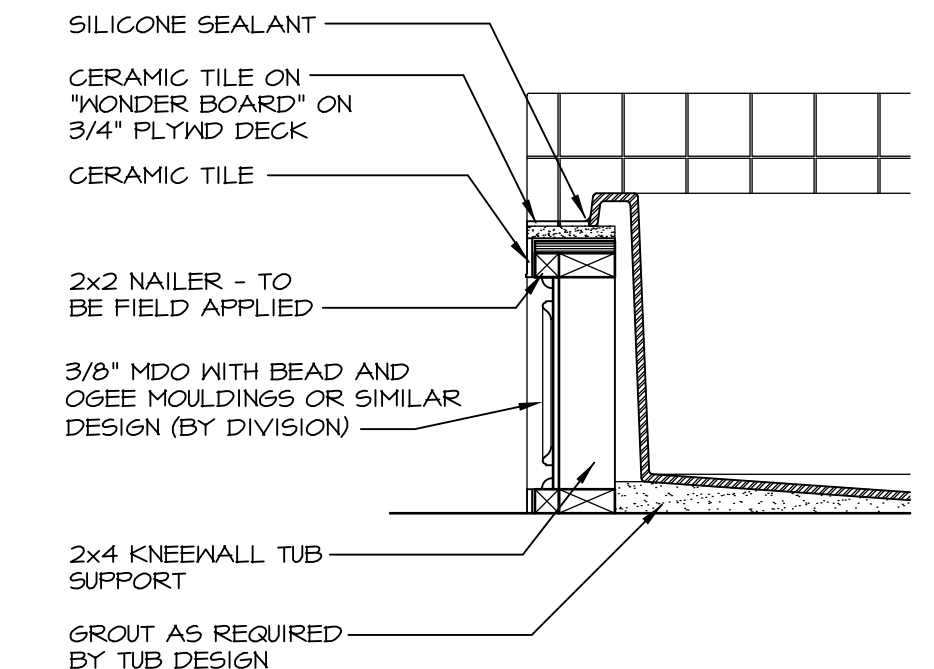
RNT040

TUB NAME	MANUF.	HEIGHT	WIDTH	LENGTH	TUB DECK PANEL HEIGHT
RN6036	AMERICAN WHIRLPOOL	20"	36"	60"	16 3/4"
RN6060	AMERICAN WHIRLPOOL	20 3/4"	60"	60"	17 1/4"
RNT040	AMERICAN WHIRLPOOL	20 1/2"	40 1/2"	71 1/2"	17"
RNT236	AMERICAN WHIRLPOOL	20 1/2"	36"	72"	17 1/4"
RNTAH15	AMERICAN WHIRLPOOL	18 1/4"	42"	60"	15"
RNTAH16	AMERICAN WHIRLPOOL	20 1/4"	42"	72"	17"

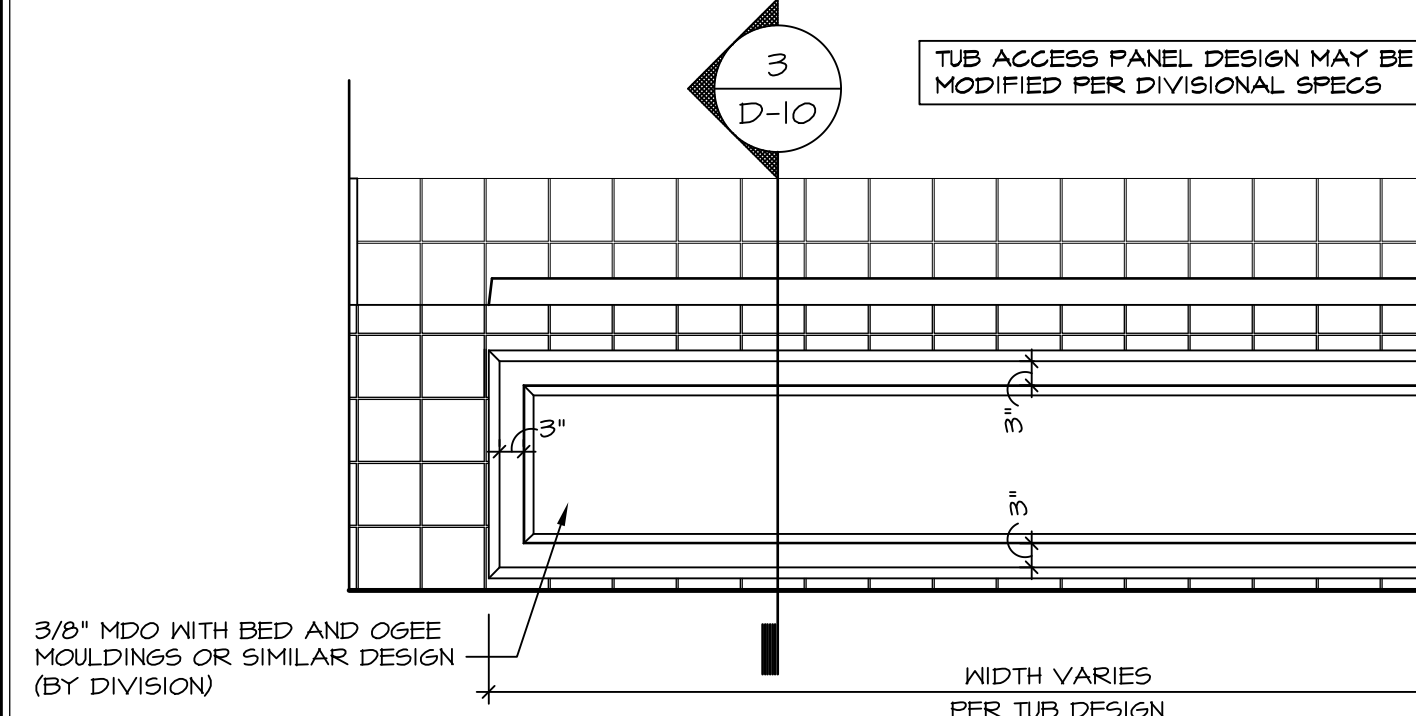
1 PLATFORM PLANS
D-10 SCALE: 1/2" = 1'-0"



2 SECTION OF TUB ON PLATFORM CONDITION
D-10 SCALE: 1 1/2" = 1'-0"

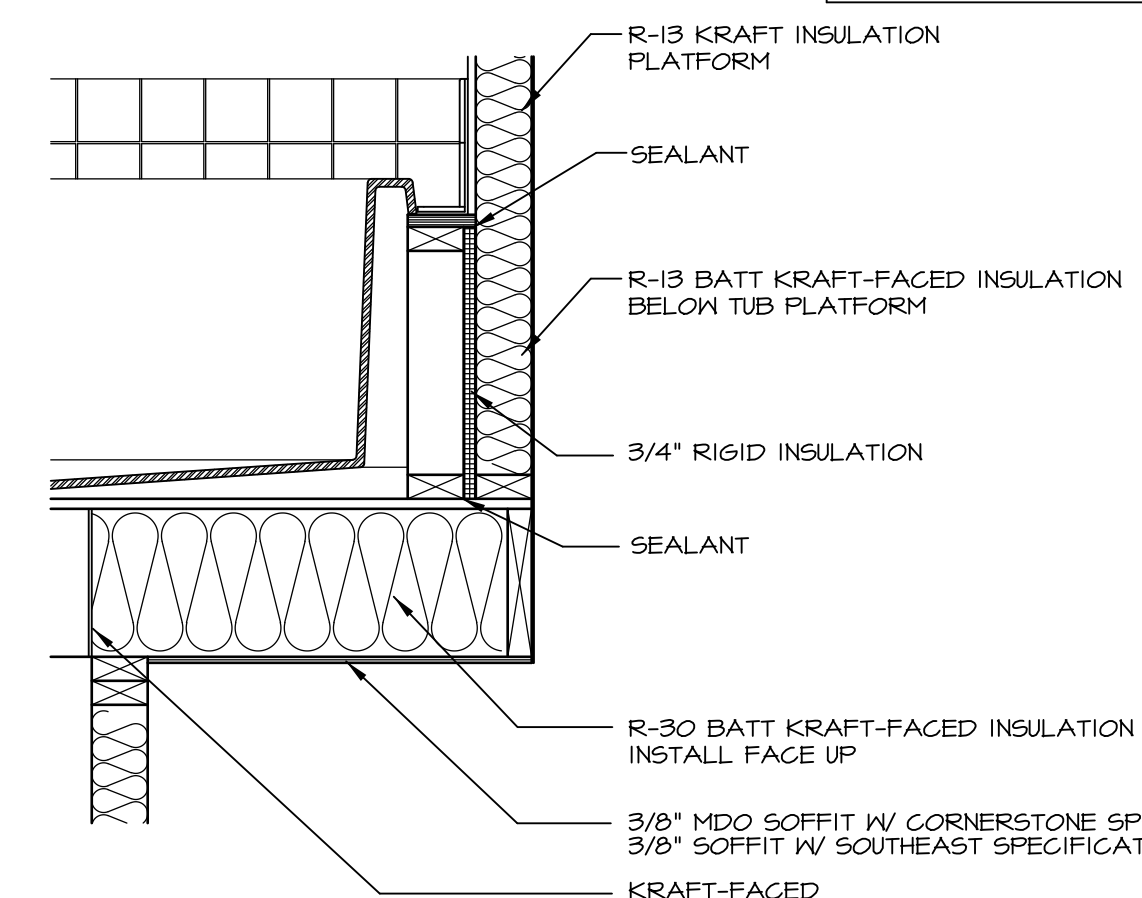


3 SECTION
D-10 SCALE: 1" = 1'-0"

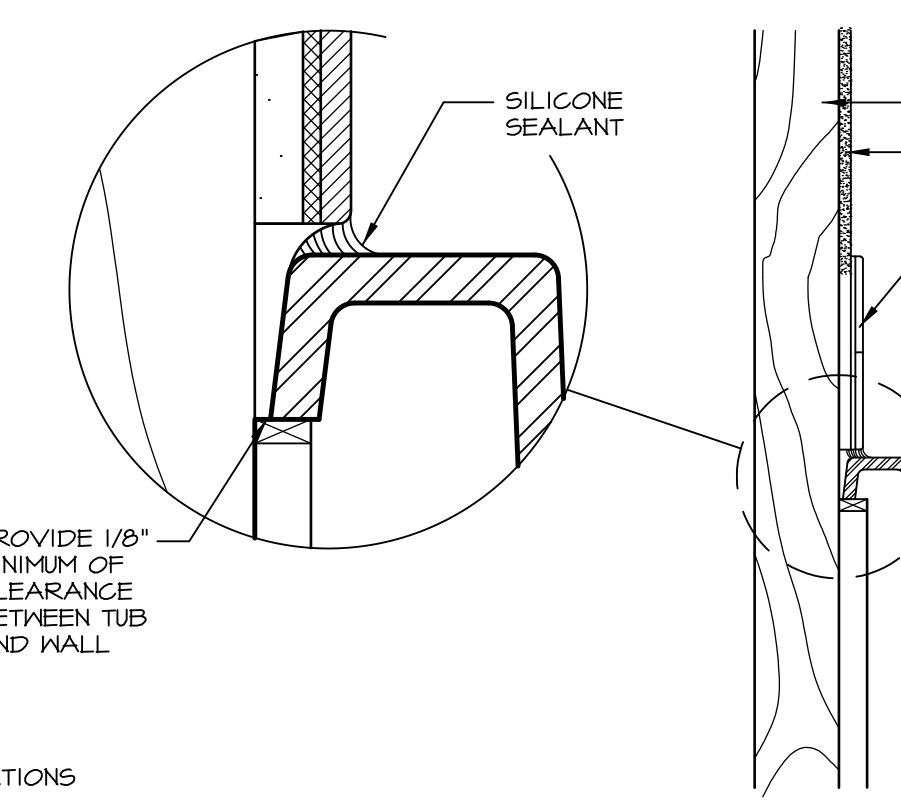


3 TUB ACCESS PANEL DESIGN MAY BE MODIFIED PER DIVISIONAL SPECS
D-10 SCALE: 1" = 1'-0"

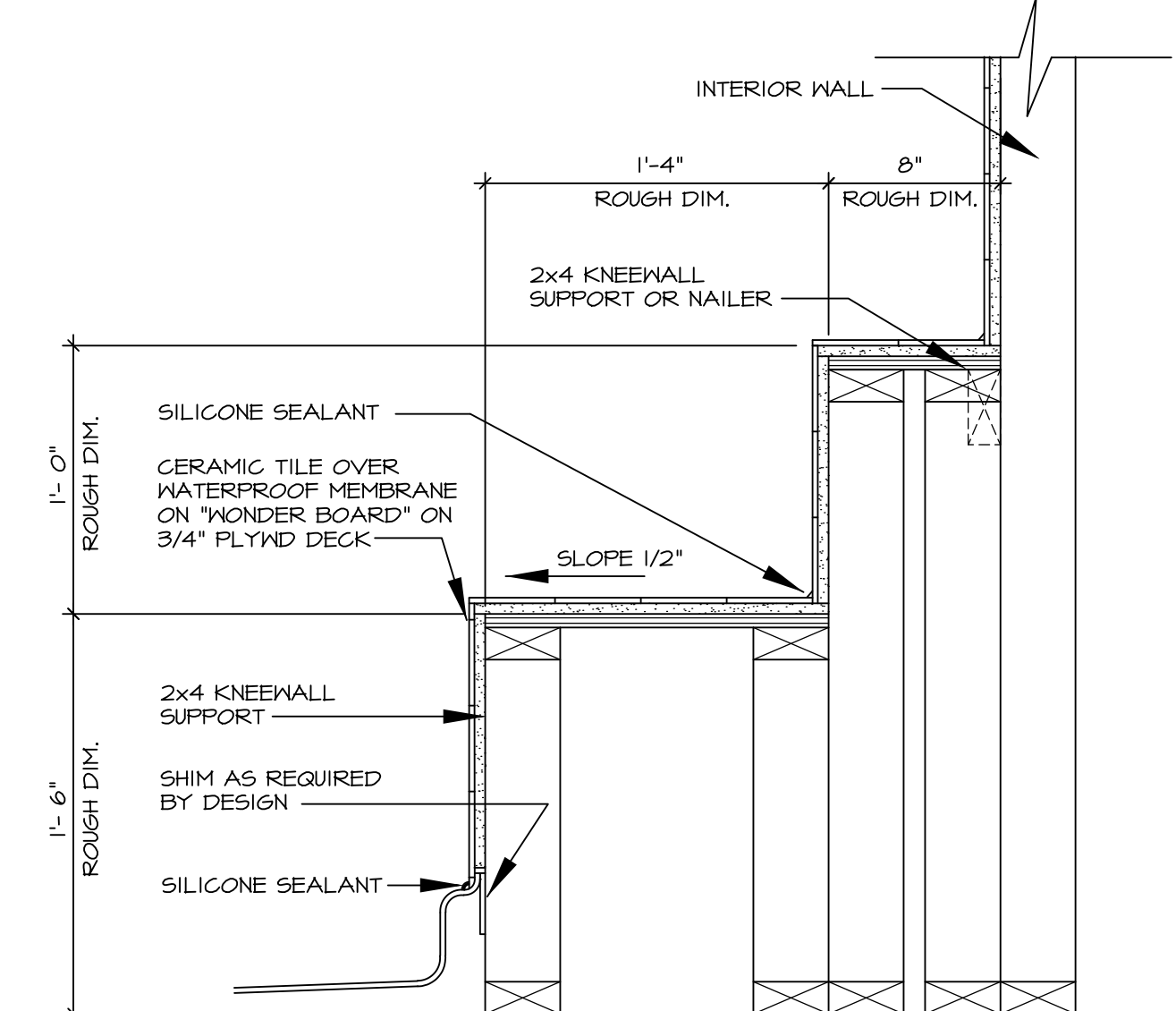
3/8" MDO WITH BED AND OGEE MOUNDINGS OR SIMILAR DESIGN (BY DIVISION)



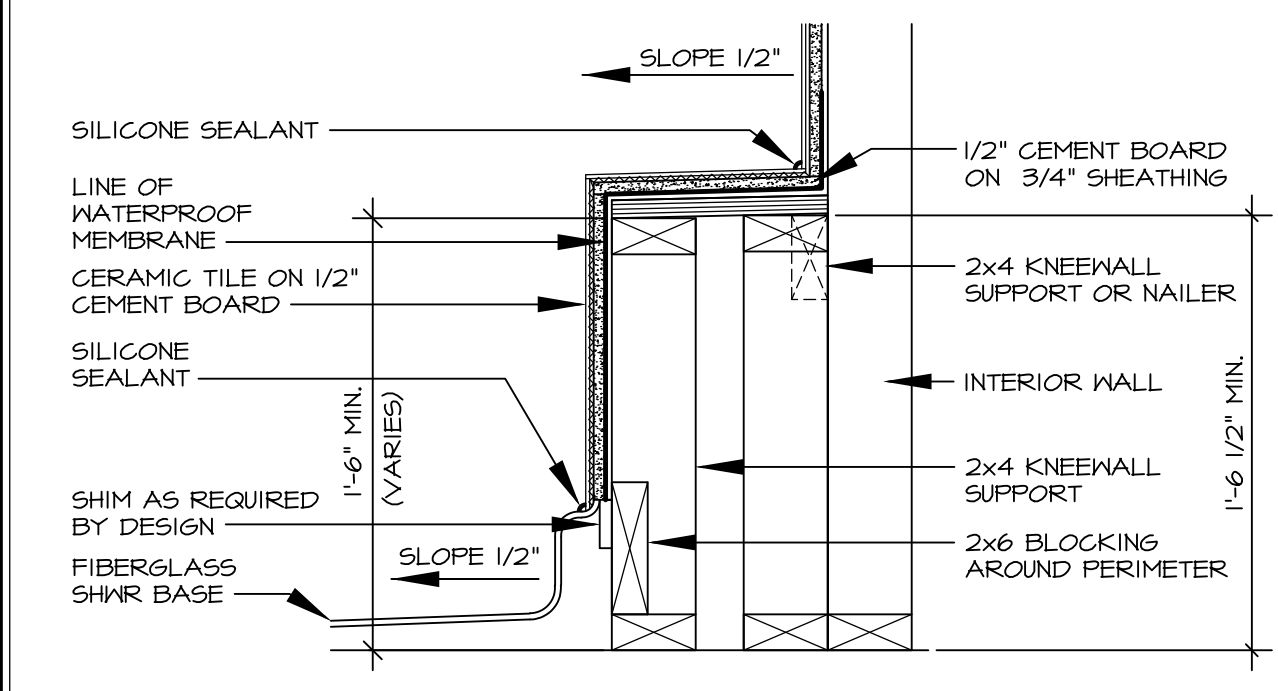
5 INSULATION DETAIL
D-10 SCALE: 1" = 1'-0" AT EXTERIOR WALL



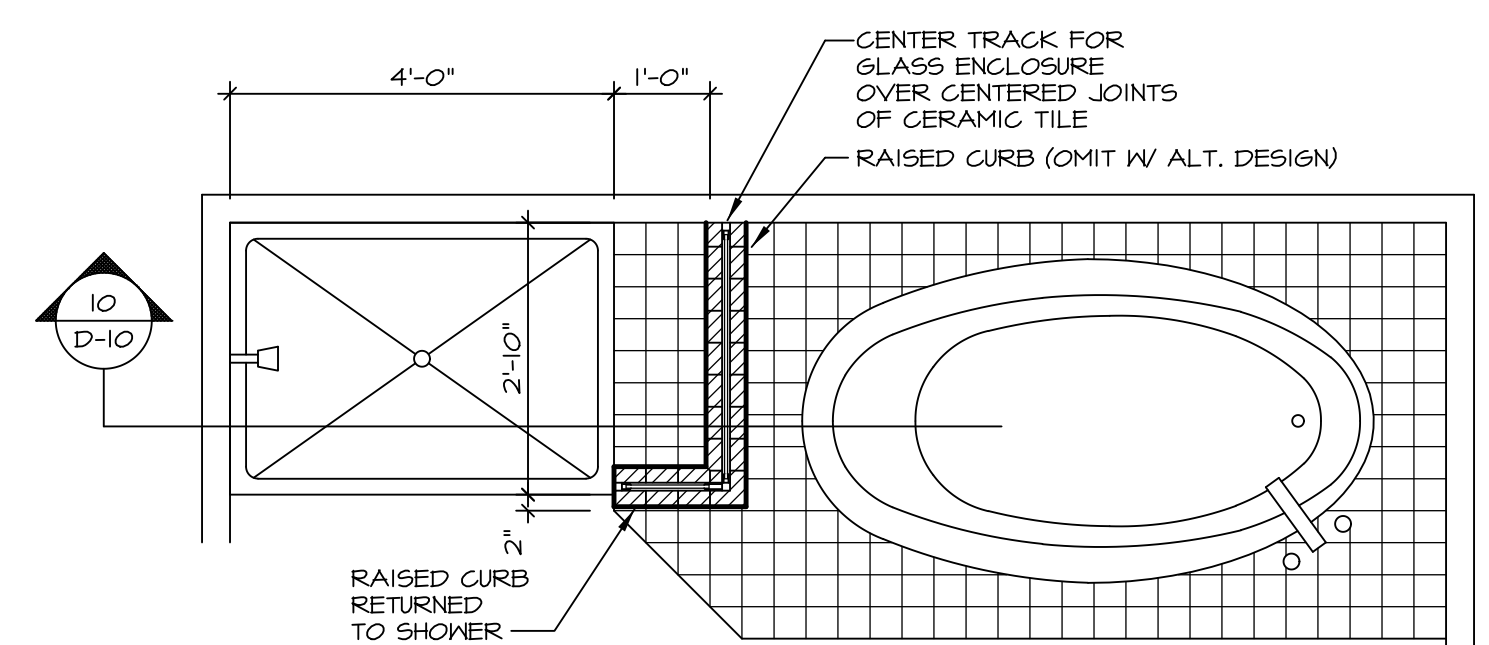
6 SECTION OF TUB TO WALL CONDITION
D-10 SCALE: 1 1/2" = 1'-0"



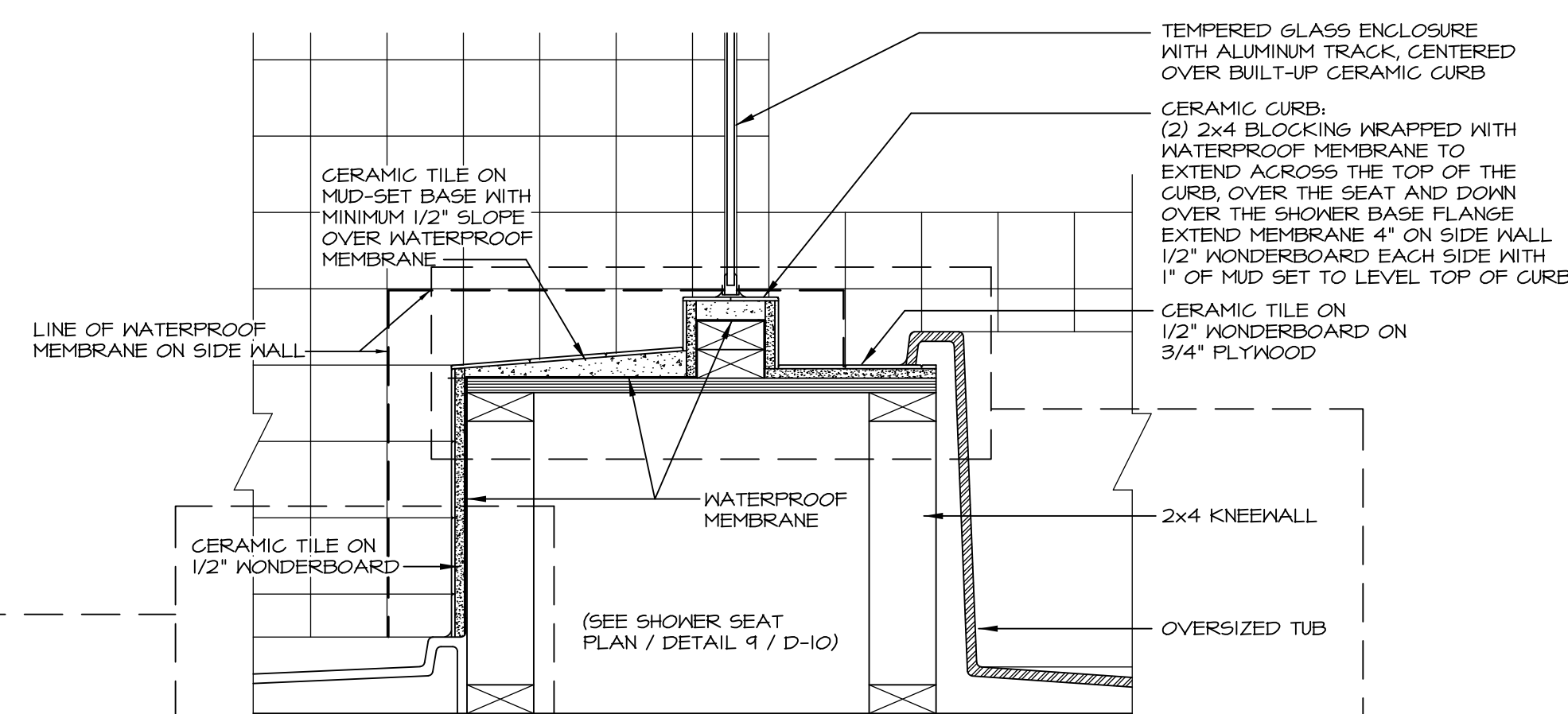
7 SECTION OF SHOWER SEAT AND SHELF
D-10 SCALE: 1 1/2" = 1'-0"



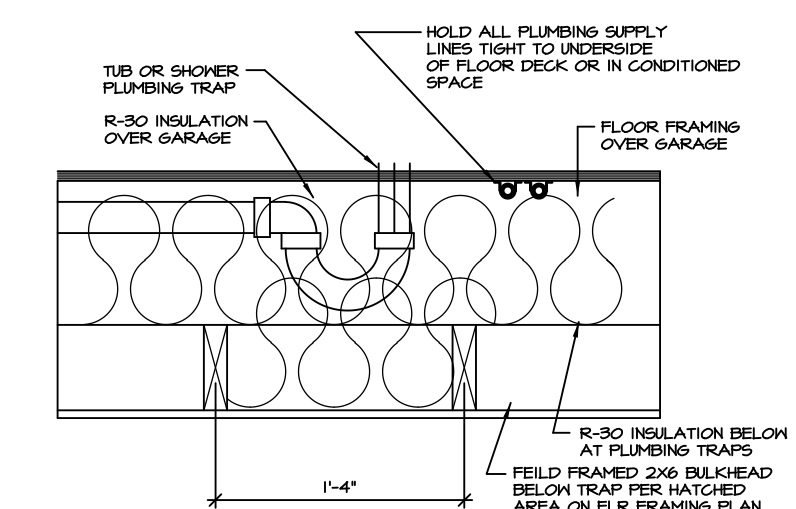
8 SECTION OF SHOWER SEAT
D-10 SCALE: 1 1/2" = 1'-0" FIBERGLASS SHOWER BASE



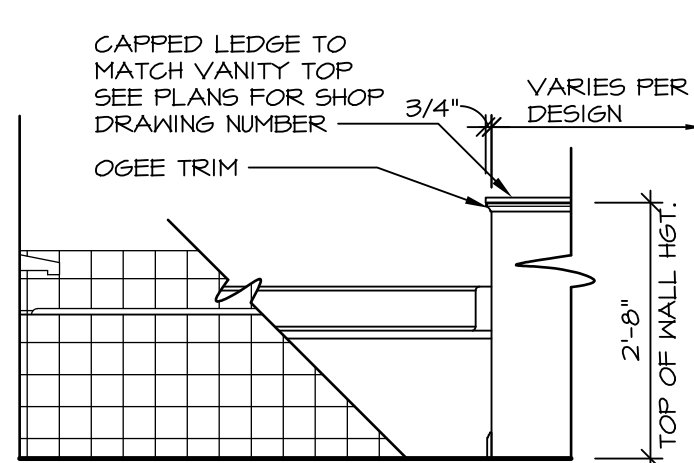
9 SHOWER SEAT PLAN / DETAIL
D-10 SCALE: 1" = 1'-0"



10 SHOWER SEAT SECTION
D-10 SCALE: 1 1/2" = 1'-0"



11 PLUMBING TRAP INSULATION
D-10 SCALE: 1 1/2" = 1'-0"



12 BATHROOM LEDGE DETAIL
D-10 SCALE: 1 1/2" = 1'-0"

LEDGE DETAIL WITH JUST TUB ONLY

LEDGE DETAIL WITH VANITY AND TUB

ALTERNATE SHOWER PAN DETAIL

ALTERNATE SEAT DETAIL

ALTERNATE TUB DECK

NOTES:

1. CONCRETE WONDERBOARD TO BE APPLIED HORIZONTALLY W/ FACTORY EDGE HELD 1/4" ABOVE PLYWOOD DECK.
2. ALL OPENINGS CUT IN DRYWALL AND ALL CUT JOINTS SHALL BE SEALED W/ ADHESIVE OR MATERIAL RECEIVED BY MANUF.
3. ALL JOINTS TO RECEIVE A TAPE AND BLOCK COAT; NAIL HEADS TO RECEIVE ONE COAT ONLY.

REVISIONS

REV. NO.	DATE	DESCRIPTION
1	5/27/14	CALL - REVISED SHOWER SEAT DETAILS
2	2/23/15	J.R. - ADDED FACETS AND TUB ACCESS TO PLATFORM PLANS (PAR #301)
3	5/1/17	EBP - REVISED DETAIL 1, 9, AND 12 TO REMOVE TUB ACCESS REF. (CBS # 3, 4)

REMARKS

NVR, Inc., owner, expressly reserves its common law copyright and other property rights in these plans. These plans are not to be altered, copied, or otherwise used in any way without the written consent of NVR, Inc. nor are they to be assigned to any third party, without first obtaining the expressed written consent of NVR, Inc.

SET NO. CORNERSTONE
VERSION
DRAWN BY RJC
DATE: 4/25/14
OPTION

STANDARD DETAILS
DRAWING TITLE
POTOMAC SHORES
UPGRADE TUB DETAILS
OPTION DESCRIPTION

SHEET NO. D-10

Model: Ryan Homes
NVR, Inc.
Architectural Services
210 North Street
Thurmont, MD 21788

C:\Users\epetarsa\AppData\Local\Temp\KspPublish_9936\010_TUBS.dwg 05/17/17 - 8:05 am