

**PLUMBING PLAN**  
 SCALE: 1/4" = 1'-0"

SHEET NO.

**A-5**

31

**NORMANDY**  
 DRAWING TITLE  
 PLUMBING PLAN

OPTION DESCRIPTION

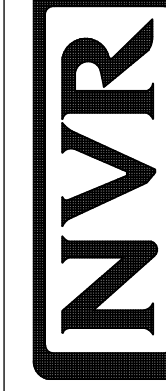
SET NO. NRM00

VERSION 01

DRAWN BY RJC

DATE: 5/14/15

OPTION



NVR, Inc.  
 Architectural Services  
 Architects  
 21 Park Plaza, Suite A  
 Frederick, MD 21702

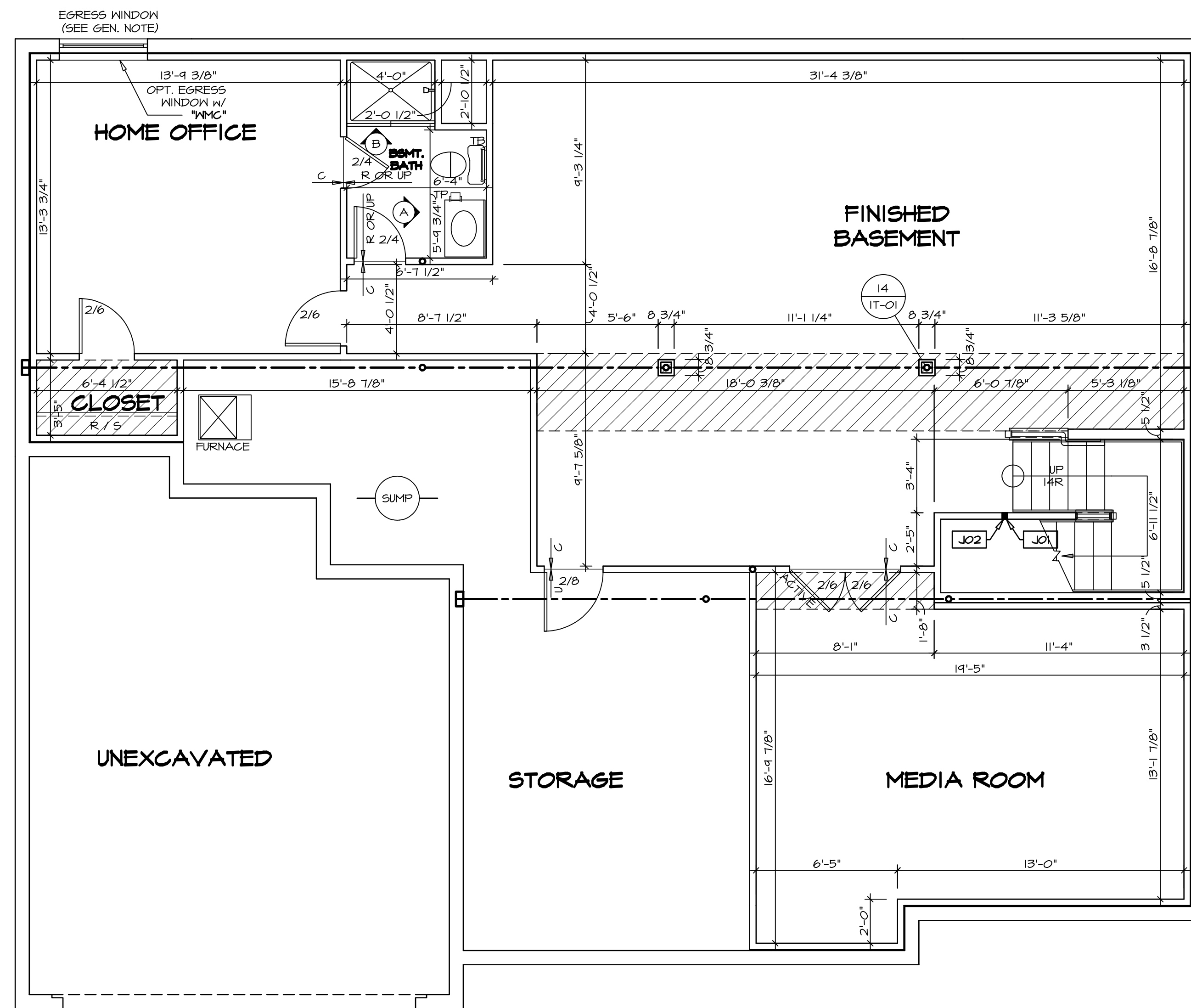
NVR, Inc., owner, expressly reserves its copyright in these plans. These plans are not to be reproduced, changed, adapted in any way, or for any purpose other than that for which they were originally prepared, without the written consent of NVR, Inc.

REV. NO.

DATE

REMARKS

REV. NO.	DATE	REMARKS



**LEGEND**

- BEARING WALL
- NON BEARING WALL
- INDICATES BEARING FROM POINT-LOAD ABOVE
- JACKS
- BEAM/HEADER
- PAD FOOTING
- STEEL COLUMN
- PORTAL FRAME
- JOIST/TRUSS
- LVL
- ENGINEERING PAGE NUMBER

SEE FC DETAILS FOR FRAMING CONNECTORS

- FLOOR PLAN NOTES**
1. ALL HEADERS ARE (2) 2x6 w/ 2x4 WALLS OR (3) 2x6 w/ 2x6 WALLS, UNLESS OTHERWISE NOTED.
  2. ALL HEADERS TO HAVE (1) 2x4 OR 2x6 JACK EACH END, UNLESS OTHERWISE NOTED.
  3. ALL EXTERIOR WALLS TO BE 4" AND ALL INTERIOR WALLS TO BE 3 1/2", UNLESS OTHERWISE NOTED.
  4. HATCHED AREAS INDICATE DROPPED CEILING. ALL DROPPED CEILING ARE 12" UNLESS OTHERWISE NOTED.
  5. SEE "BRACED WALL PANEL DETAIL SHEET" FOR SPECIAL WALL FRAMING LOCATIONS AND HEADER SIZES, IF APPLICABLE.
  6. SEE STANDARD DETAIL CATEGORY "IT" SHEET(S) FOR INTERIOR TRIM DETAILS.
  7. SEE ARCHITECTURAL DETAIL SHEET "AD" FOR HOUSE SPECIFIC INTERIOR TRIM OPTION TABLE.
  8. ALL WINDOWS HAVE 7'-0 1/2" HEADER HEIGHT UNLESS OTHERWISE NOTED.

- GYPSUM NOTES**
- AT GARAGE:  
 GYPSUM BOARD AT COMMON WALLS, CEILING, BEAM WRAPS AND SUPPORTS PER STANDARD DETAIL FA-1(b) FIRE ASSEMBLY OR AS REQUIRED BY LOCAL CODE.
- AT STAIRS:  
 1/2" GYPSUM BOARD AT UNDERSIDE OF STAIRS AND WALLS IN CLOSET

**BASEMENT JACK SCHEDULE**

IDENTIFIER	DESCRIPTION	OPTIONS	ENG. NUM.	REMARKS
J01	JACK - 2x4 SPF STUD GRADE		B10	
J02	JACK - 2x4 SPF STUD GRADE		B22	

**BASEMENT FLOOR PLAN**  
 SCALE: 1/4" = 1'-0"

**REVISIONS**

REV. NO.	DATE	DESCRIPTION
1	08/07/16	NL - DRAWING ALIGNMENT
2	11/05/16	TH - STANDARD DETAILS 3.0
3	4/20/17	SFK - ADDED BASEMENT FLOOR PLAN JACK SCHEDULE

**REMARKS**

NVR, Inc., owner, expressly reserves its copyright in these plans. These plans are not to be reproduced, changed, copied, or otherwise used in any way without the prior written consent of NVR, Inc.

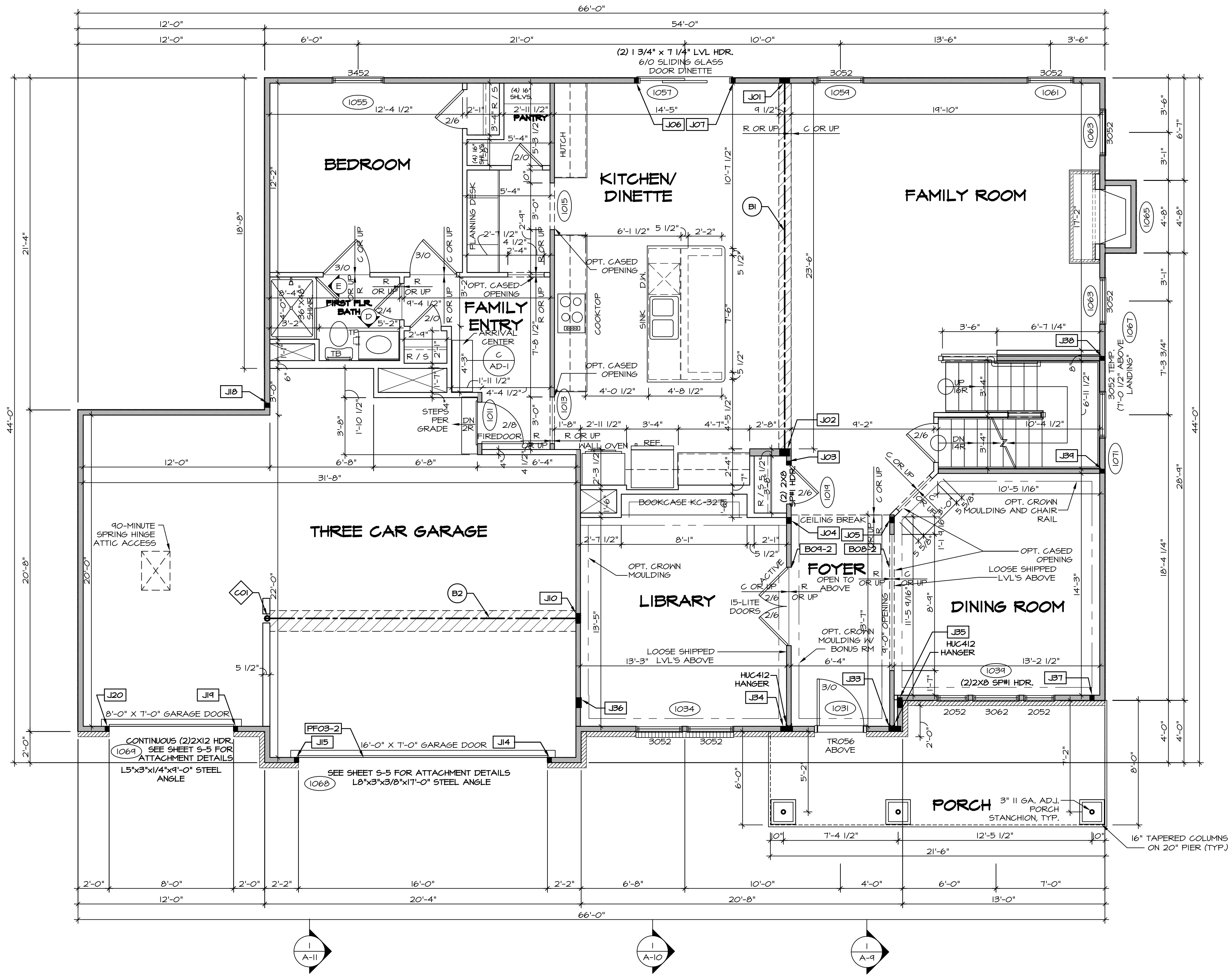
**NVR**  
 NVR, Inc.  
 Architectural Services  
 Architects  
 21 Bay Street, Suite A  
 Frederick, MD 21702

SET NO. NRM00  
 VERSION 01  
 DRAWN BY SGA  
 DATE: 6/29/15  
 OPTION

MODEL: **NORMANDY**  
 DRAWING TITLE: **BASEMENT FLOOR PLAN**  
 OPTION DESCRIPTION

SHEET NO. **A-6**  
 34

C:\NVR\Solves\NORMANDY\_NRM00\_01\DCI-VG-K418-88-01-4-Sheets\01-Spec\13-4-A-6-BSMT\_LS.dwg 02/18/18 - 3:07 pm



**FIRST FLOOR PLAN**  
SCALE: 1/4" = 1'-0"

**LVL PLY TO PLY FASTENING SCHEDULE:** (WHERE APPLICABLE BASED ON LVL USAGE)

1A - (2) PLY UP TO AND INCLUDING 11 7/8" TALL; FASTEN PLYS W/ (2) ROWS 16D NAILS AT 12" O.C.  
 2A - (2) PLY 14" TO AND 18" TALL (INCLUSIVE); FASTEN PLYS W/ (3) ROWS 16D NAILS AT 12" O.C.  
 3A - (2) PLY 20" TALL AND OVER; FASTEN PLYS W/ (4) ROWS 16D NAILS AT 12" O.C.  
 4A - (3) PLY UP TO AND INCLUDING 11 7/8" TALL; FASTEN PLYS W/ (2) ROWS 16D NAILS AT 12" O.C. FROM EACH SIDE  
 5A - (3) PLY 14" TO AND 18" TALL (INCLUSIVE); FASTEN PLYS W/ (3) ROWS 16D NAILS AT 12" O.C. FROM EACH SIDE  
 6A - (3) PLY 20" TALL AND OVER; FASTEN PLYS W/ (4) ROWS 16D NAILS AT 12" O.C. FROM EACH SIDE  
 7A - (4) PLY (ALL SIZES); FASTEN PLYS W/ (2) ROWS 1/2" DIAMETER A307 BOLTS AT 24" O.C. SEE SHOP DRAWING FOR ADDITIONAL INFORMATION.

**FIELD INSTALLED FIRST FLOOR BEAM/HEADER SCHEDULE**

IDENTIFIER	DESCRIPTION	LENGTH	OPTIONS	ENG. NUM.	REMARKS
B08-2	LVL - 11-14	13'-5 9/16"	ELL	1017	1A (FIELD INSTALLED)
B09-2	LVL - 11-14	13'-5"	ELL	1017	1A (FIELD INSTALLED)
B1	BEAM STEEL - W12X35	24'-2"		1021	
B2	BEAM STEEL - W12X26	20'-2 1/2"		1023	
PF03-2	LVL - 11-04	20'-0"	6CF	1043	PORTAL FRAME, 1A

**STEEL COLUMN SCHEDULE**

IDENTIFIER	STYLE	HEIGHT	OPTIONS	ENG. NUM.	REMARKS
CO1	STANCHION - 4 IN DIA 116A ADJ	9'-0 1/8"	6CF, FBA	1023	

**FIRST FLOOR JACK SCHEDULE**

IDENTIFIER	DESCRIPTION	OPTIONS	ENG. NUM.	REMARKS
JO1	JACK - (5) 2X4 SP#1		1021	
JO2	JACK - (5) 2X6 SP#1		1021	
JO3	JACK - (2) 2X4 SP# STUD GRADE		1019	
JO4	JACK - (3) 2X4 SP# STUD GRADE		1017	
JO5	JACK - (3) 2X4 SP# STUD GRADE		1017	
JO6	JACK - (2) 2X4 SP# STUD GRADE		1057	
JO7	JACK - (2) 2X4 SP# STUD GRADE		1057	
JO8	JACK - (5) 2X4 SP#1		1023	
JO9	JACK - (2) 2X4 SP# STUD GRADE	6CB, 6CF	1043	
JO10	JACK - (2) 2X4 SP# STUD GRADE	6CF, 6CF	1043	
JO11	JACK - (2) 2X4 SP# STUD GRADE	6CF	1043	
JO12	JACK - (2) 2X4 SP# STUD GRADE	6CF	1043	
JO13	JACK - (6) 2X4 SP# STUD GRADE	ELL	1017	
JO14	JACK - (6) 2X4 SP# STUD GRADE	ELL	1017	
JO15	JACK - (5) 2X4 SP#1	ELL	2000	
JO16	JACK - (5) 2X4 SP#1	ELL	2000	
JO17	JACK - (2) 2X4 SP# STUD GRADE	ELL	1041	
JO18	JACK - (2) 2X4 SP# STUD GRADE	ELL	1007	
JO19	JACK - (2) 2X4 SP# STUD GRADE	ELL	1007	

**LEGEND**

- BEARING WALL
- NON BEARING WALL
- INDICATES BEARING FROM POINT-LOAD ABOVE
- JACKS
- BEAM/HEADER
- PAD FOOTING
- STEEL COLUMN
- PORTAL FRAME
- JOIST/TRUSS
- LVL
- ENGINEERING PAGE NUMBER
- SEE FC DETAILS FOR FRAMING CONNECTORS

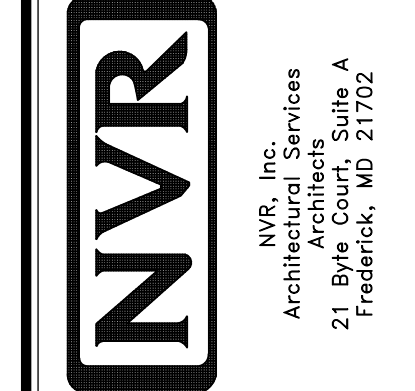
- FLOOR PLAN NOTES** RYAN
- ALL HEADERS ARE (2) 2x6 w/ 2x4 WALLS OR (3) 2x6 w/ 2x6 WALLS, UNLESS OTHERWISE NOTED.
  - ALL HEADERS TO HAVE (1) 2x4 OR 2x6 JACK AND KING STUD EACH END, UNLESS OTHERWISE NOTED.
  - ALL EXTERIOR WALLS TO BE 4" w/ OSB OR 3 1/2" w/ T-PLY. ALL INTERIOR WALLS TO BE 5 1/2", UNLESS OTHERWISE NOTED.
  - HATCHED AREAS INDICATE DROPPED CEILING. ALL DROPPED CEILING ARE 12' UNLESS OTHERWISE NOTED.
  - SEE "BRACED WALL PANEL DETAIL SHEET" FOR SPECIAL WALL FRAMING LOCATIONS AND HEADER SIZES, IF APPLICABLE.
  - SEE STANDARD DETAIL CATEGORY "IT" SHEET(S) FOR INTERIOR TRIM DETAILS.
  - SEE ARCHITECTURAL DETAIL SHEET "AD" FOR HOUSE SPECIFIC INTERIOR TRIM OPTION TABLE.
  - ALL WINDOWS HAVE 7'-0 1/2" HEADER HEIGHT UNLESS OTHERWISE NOTED.
  - ALL HEADERS IN NON-BEARING WALLS SHALL BE A SINGLE FLAT 2X4 OR 2X6 ATTACHED TO CRIPPLES ABOVE, UNLESS OTHERWISE NOTED.

- GYPSUM NOTES** RYAN
- AT GARAGE:**  
GYPSUM BOARD AT COMMON WALLS, CEILING, BEAM WRAPS AND SUPPORTS PER STANDARD DETAIL FA-10(b) FIRE ASSEMBLIES OR AS REQUIRED BY LOCAL CODE.
- AT STAIRS:**  
1/2" GYPSUM BOARD AT UNDERSIDE OF STAIRS AND WALLS IN CLOSET

**REVISIONS**

REV. NO.	DATE	DESCRIPTION
1	08/07/16	N.E. - DRAWING ALIGNMENT
2	10/05/16	TH - STANDARD DETAILS 3.0
3	07/17/17	SL5 - T-PLY CONVERSION PROJECT

NVR, Inc., owner, expressly reserves its common law copyright in these plans. These plans are not to be reproduced, changed, copied, or otherwise used in any way without the written consent of NVR, Inc.

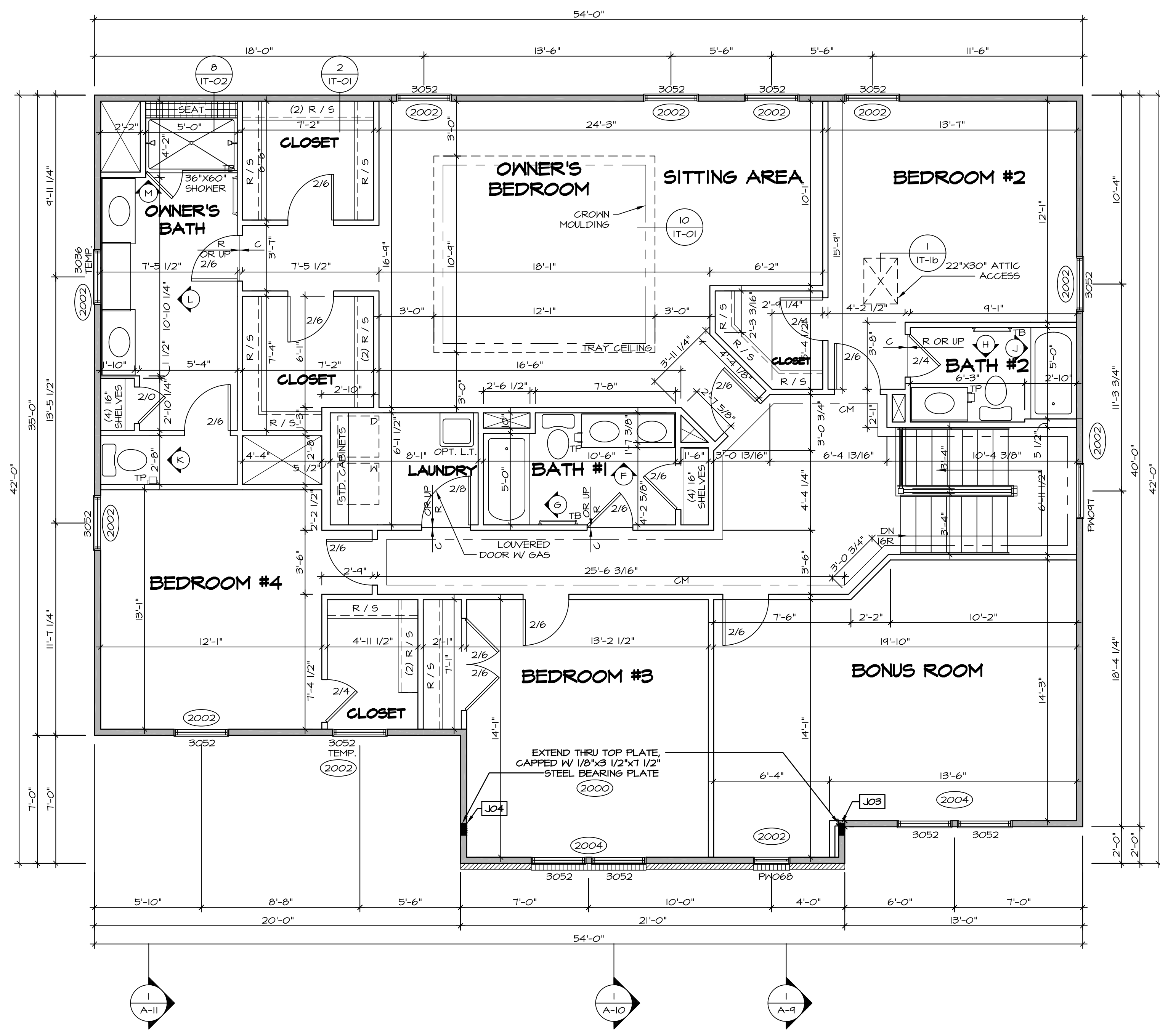


MODEL: NRM000  
VERSION: 01  
DRAWN BY: SGA  
DATE: 6/29/15  
OPTION

SET NO. NRM000  
DRAWING TITLE: FIRST FLOOR PLAN  
OPTION DESCRIPTION

**A-7**

35



**SECOND FLOOR PLAN**  
SCALE: 1/4" = 1'-0"

**LEGEND**

- BEARING WALL
- NON BEARING WALL
- INDICATES BEARING FROM POINT-LOAD ABOVE
- JACKS
- BEAM/HEADER
- PAD FOOTING
- STEEL COLUMN
- PORTAL FRAME
- JOIST/TRUSS
- LVL
- ENGINEERING PAGE NUMBER

SEE FC DETAILS FOR FRAMING CONNECTORS

- FLOOR PLAN NOTES** RYAN
- ALL HEADERS ARE (2) 2x6 w/ 2x4 WALLS OR (3) 2x6 w/ 2x6 WALLS, UNLESS OTHERWISE NOTED.
  - ALL HEADERS TO HAVE (1) 2x4 OR 2x6 JACK AND KING STUD EACH END, UNLESS OTHERWISE NOTED.
  - ALL EXTERIOR WALLS TO BE 4" w/ OSB OR 3 1/2" w/ T-PLY, ALL INTERIOR WALLS TO BE 3 1/2", UNLESS OTHERWISE NOTED.
  - HATCHED AREAS INDICATE DROPPED CEILINGS. ALL DROPPED CEILINGS ARE 12" UNLESS OTHERWISE NOTED.
  - SEE "BRACED WALL PANEL DETAIL SHEET" FOR SPECIAL WALL FRAMING LOCATIONS AND HEADER SIZES, IF APPLICABLE.
  - SEE STANDARD DETAIL CATEGORY "IT" SHEET(S) FOR INTERIOR TRIM DETAILS.
  - SEE ARCHITECTURAL DETAIL SHEET "AD" FOR HOUSE SPECIFIC INTERIOR TRIM OPTION TABLE.
  - ALL WINDOWS HAVE 7'-0 1/2" HEADER HEIGHT UNLESS OTHERWISE NOTED.
  - ALL HEADERS IN NON-BEARING WALLS SHALL BE A SINGLE FLAT 2x4 OR 2x6 ATTACHED TO GRIFFLES ABOVE, UNLESS OTHERWISE NOTED.

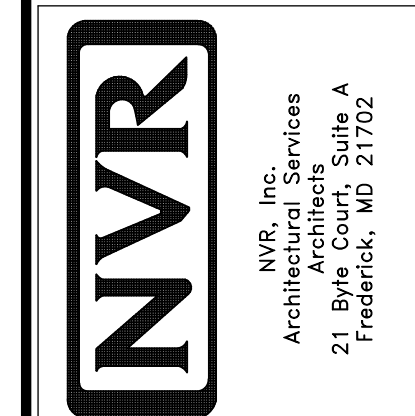
**SECOND FLOOR JACK SCHEDULE**

IDENTIFIER	DESCRIPTION	OPTIONS	ENG. NUM.	REMARKS
JO3	JACK - (5) 2X4 SPM	ELL	2000	
JO4	JACK - (5) 2X4 SPM	ELL	2000	

**REVISIONS**

REV. NO.	DATE	DESCRIPTION
1	08/07/16	N - DRAWING ALIGNMENT
2	11/05/16	TH - STANDARD DETAILS 3.0
3	07/17/17	SLS - T-PLY CONVERSION PROJECT

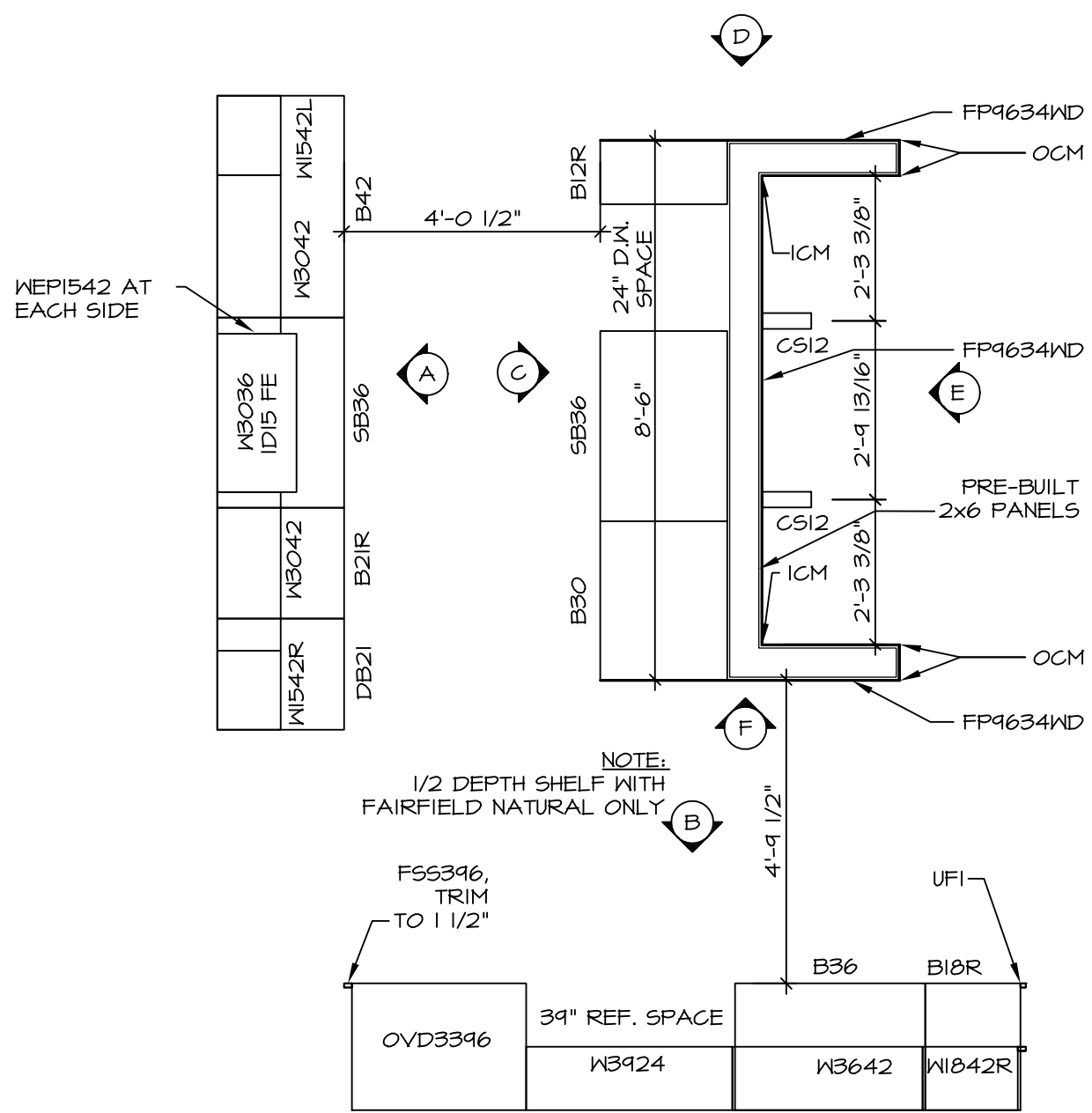
NVR, Inc., owner, expressly reserves its common law copyright in these architectural plans. These plans are not to be reproduced, changed, copied in any way, or otherwise used without the written consent of NVR, Inc.



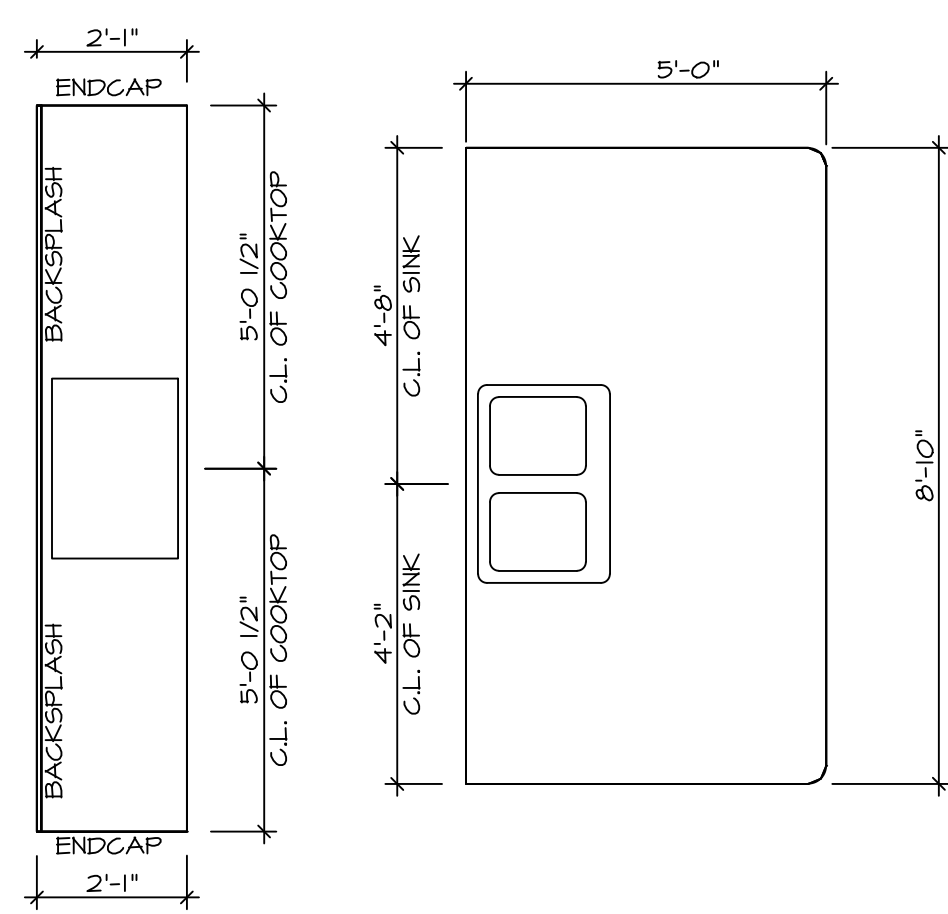
SET NO. NRM00  
VERSION 01  
DRAWN BY SGA  
DATE: 6/29/15  
OPTION

MODEL: NORMANDY  
DRAWING TITLE: SECOND FLOOR PLAN  
OPTION DESCRIPTION

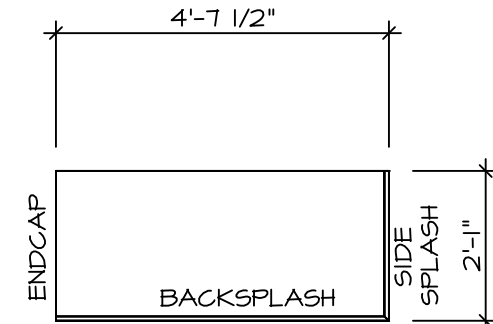
SHEET NO. A-8  
38



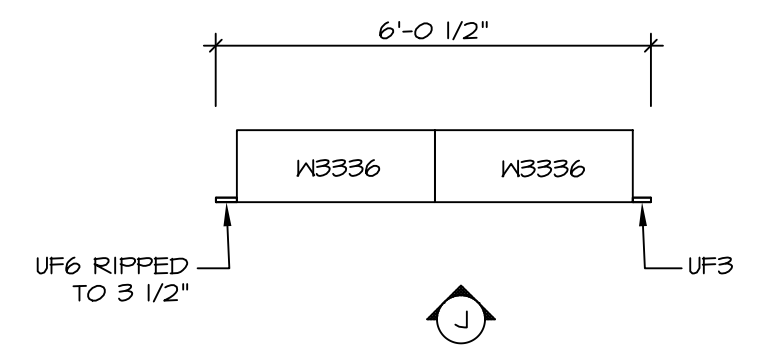
**KITCHEN CABINET PLAN / KC-3231**  
SCALE: 3/8" = 1'-0" A-13



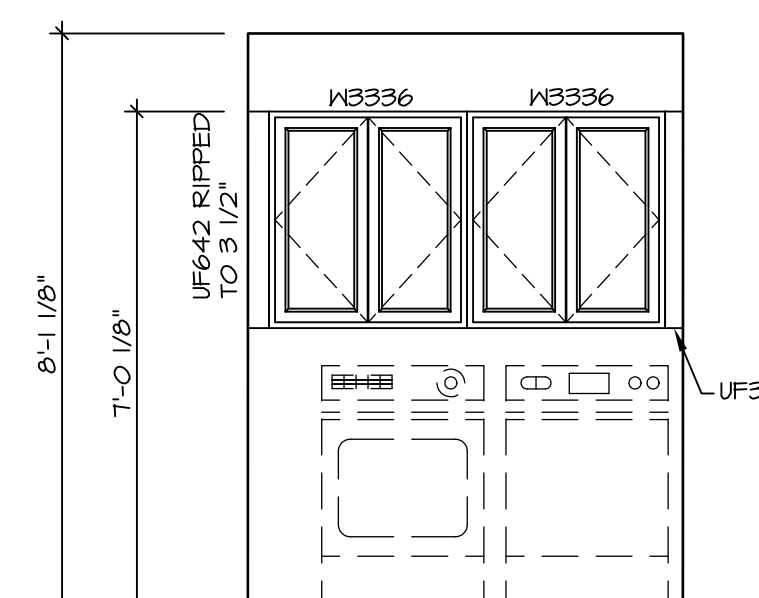
**KITCHEN CABINET PLAN / KC-3307**  
KITCHEN HUTCH "VAK" SCALE: 3/8" = 1'-0" A-13



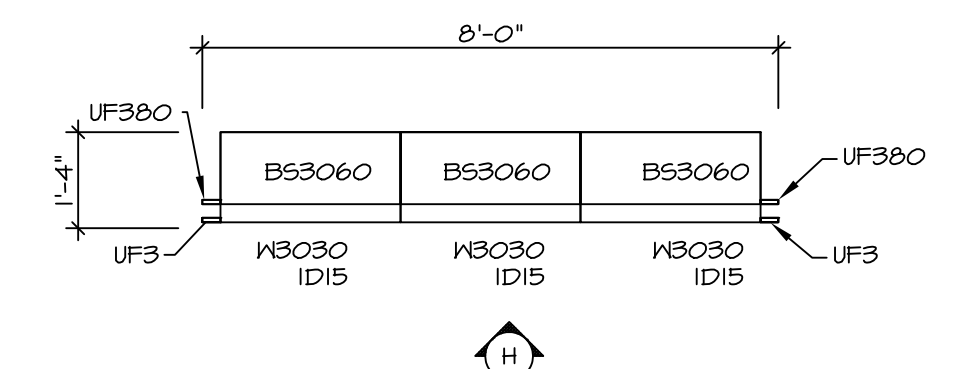
**KITCHEN COUNTER PLAN / KT-3307**  
KITCHEN HUTCH "VAK" SCALE: 3/8" = 1'-0" A-13



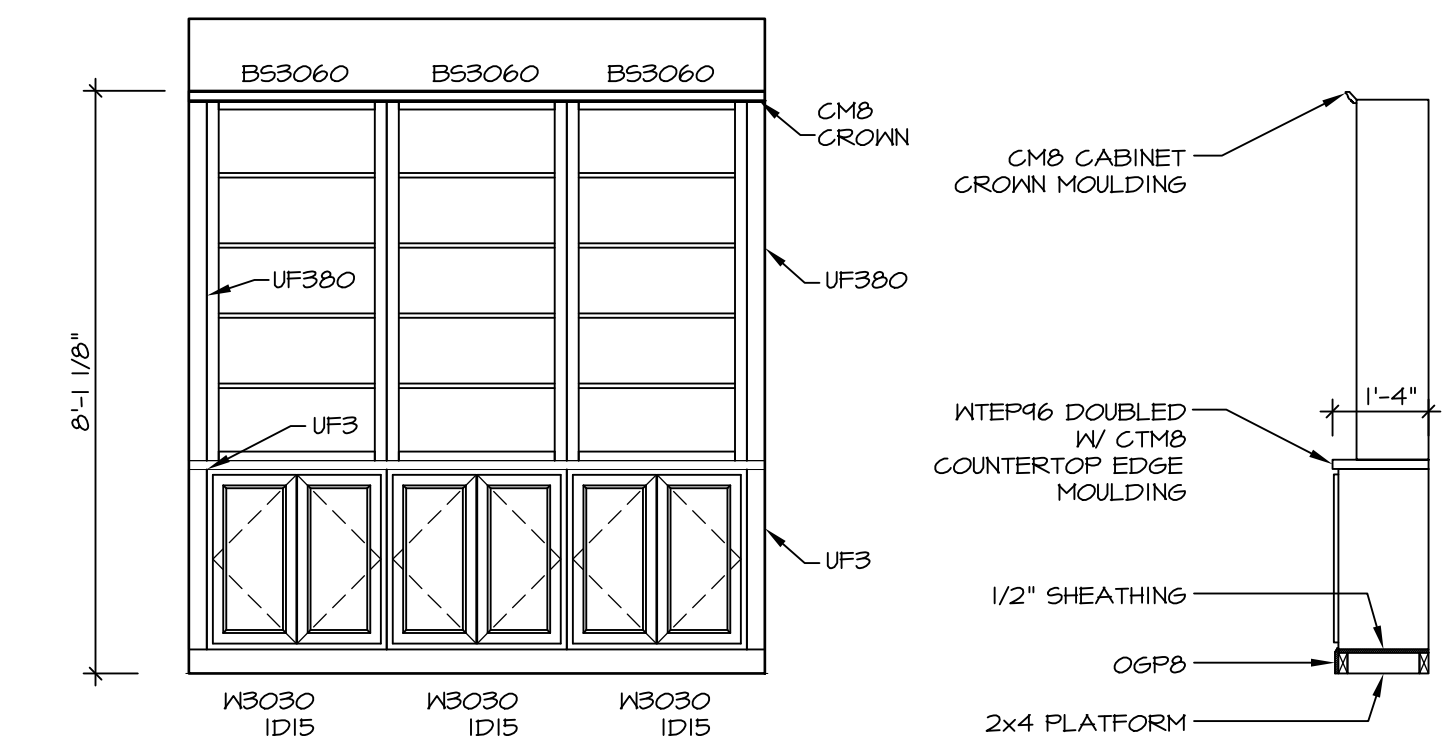
**LAUNDRY CABINET PLAN / KC-3281**  
SCALE: 3/8" = 1'-0" A-13



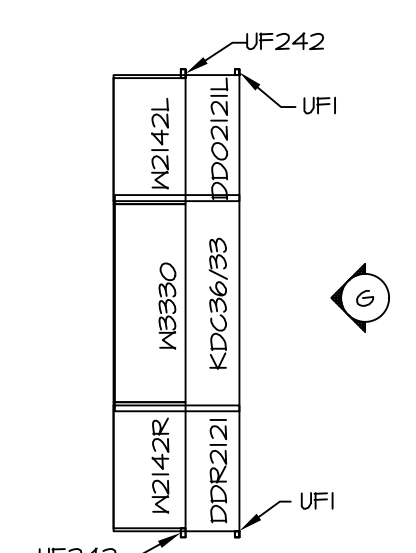
**LAUNDRY CABINET ELEVATION**  
SCALE: 3/8" = 1'-0" A-13



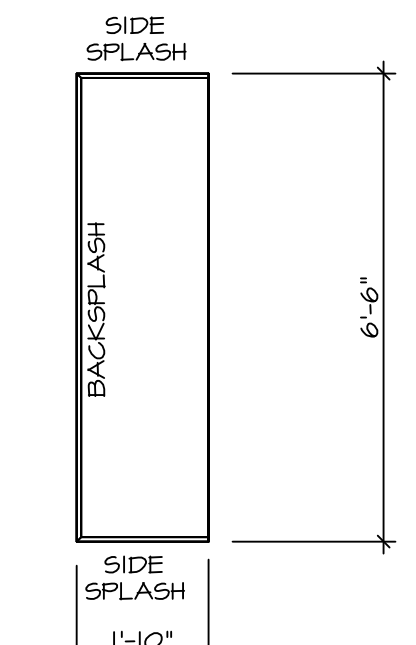
**LIBRARY BOOKCASE PLAN / KC-3275**  
LIBRARY BOOKCASE "VST" SCALE: 3/8" = 1'-0" A-13



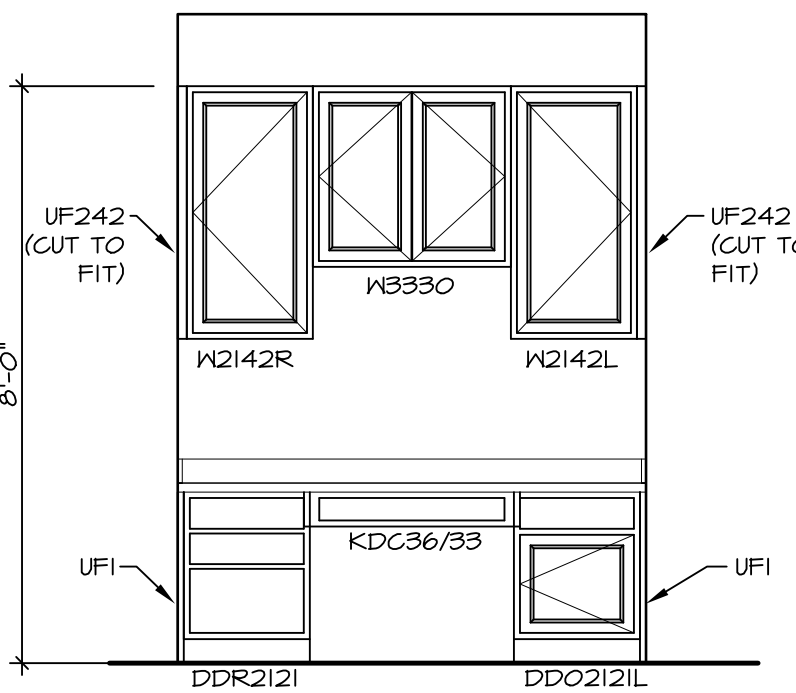
**LIBRARY BOOKCASE ELEVATION**  
LIBRARY BOOKCASE "VST" SCALE: 3/8" = 1'-0" A-13



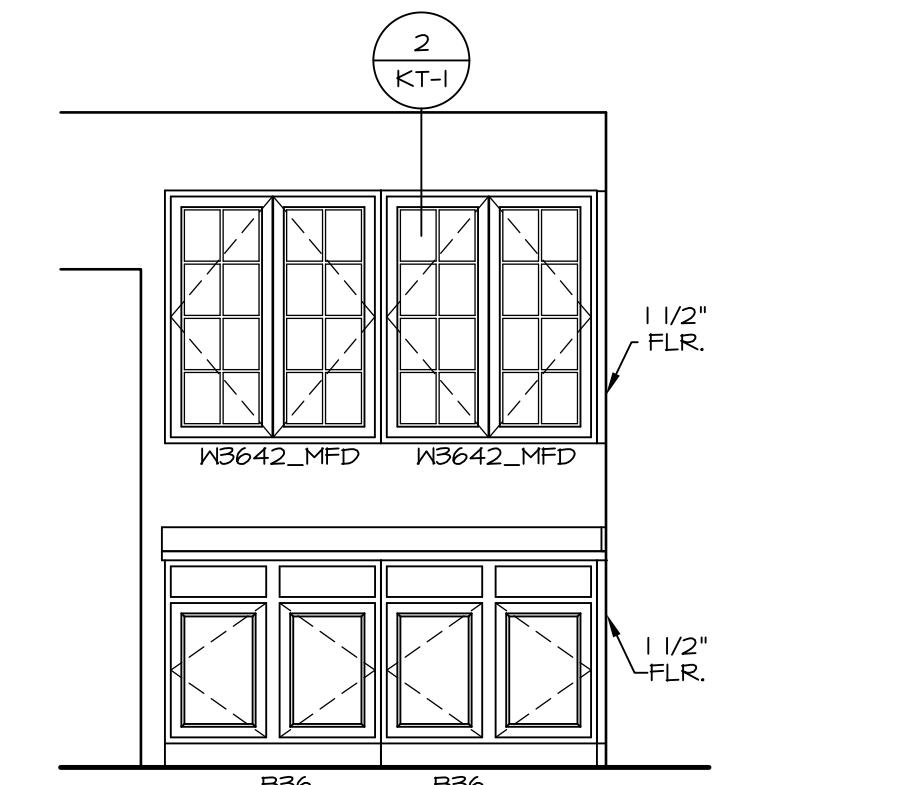
**KITCHEN CABINET PLAN / KC-3232**  
KITCHEN PLANNING DESK "KFE" SCALE: 3/8" = 1'-0" A-13



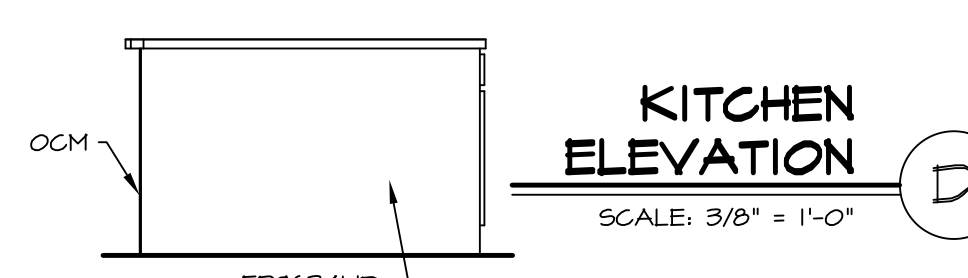
**KITCHEN COUNTER PLAN / KT-3232**  
KITCHEN PLANNING DESK "KFE" SCALE: 3/8" = 1'-0" A-13



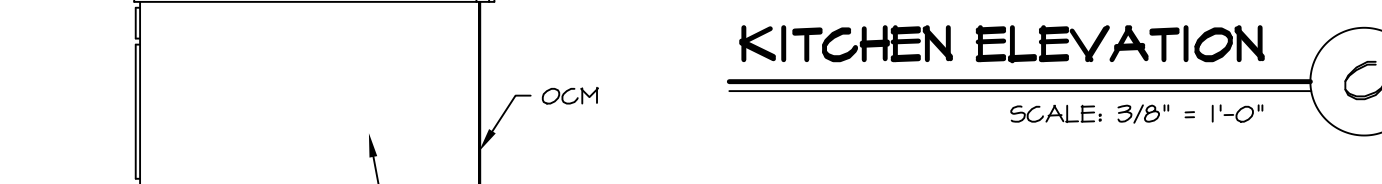
**KITCHEN ELEVATION**  
KITCHEN PLANNING DESK "KFE" SCALE: 3/8" = 1'-0" A-13



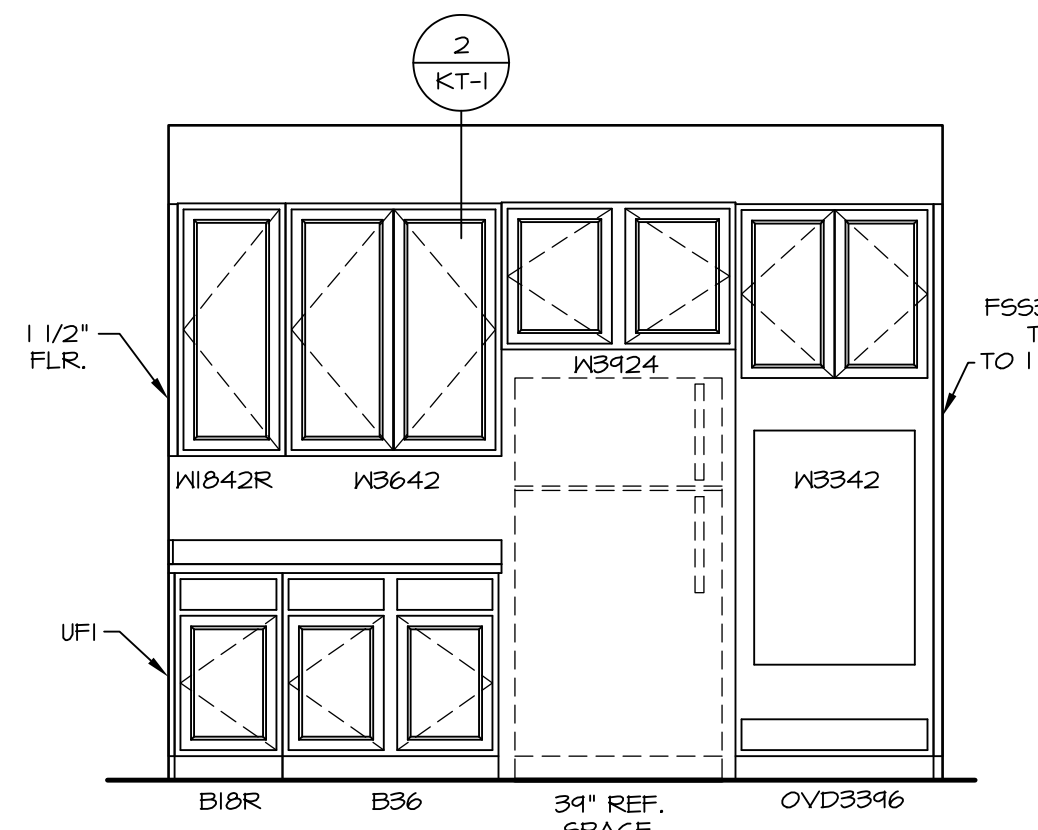
**KITCHEN HUTCH ELEVATION**  
SCALE: 3/8" = 1'-0" A-13



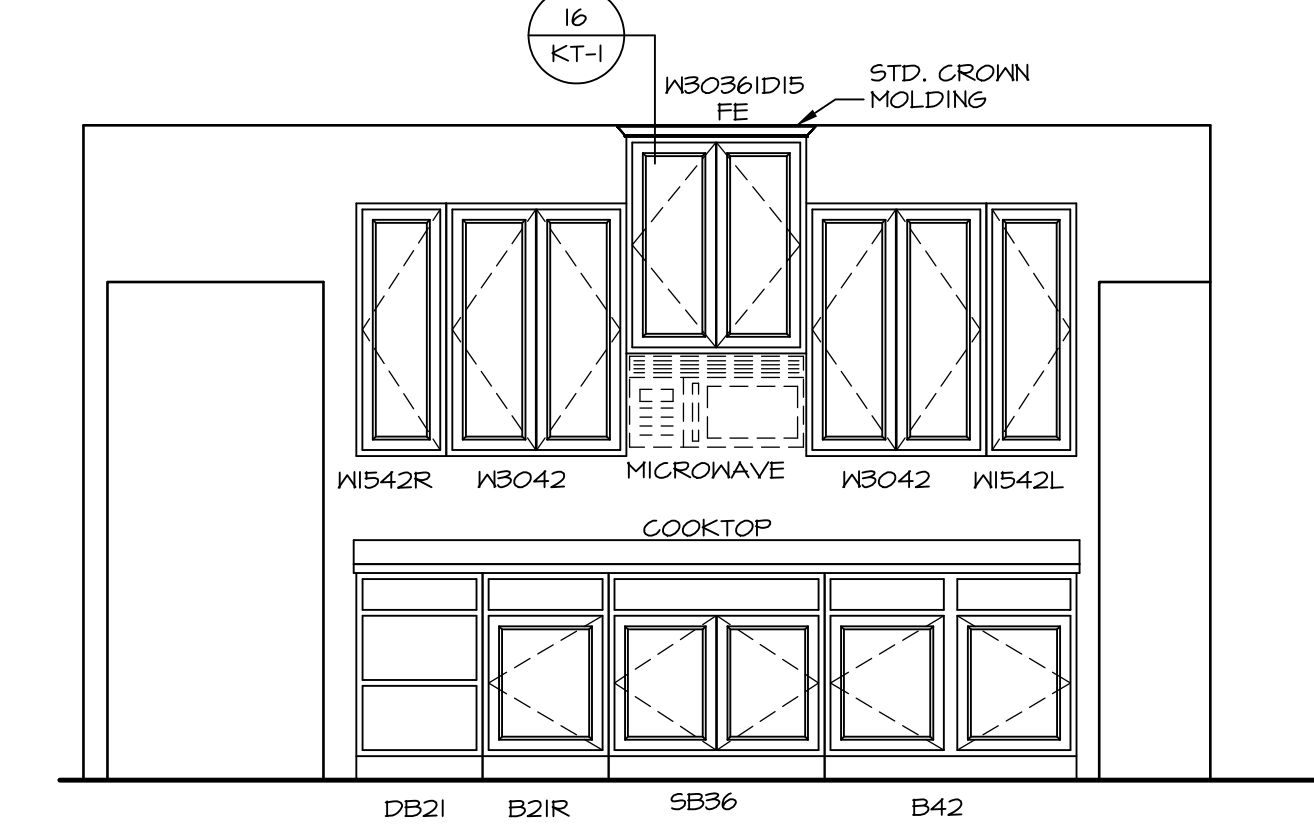
**KITCHEN ELEVATION**  
SCALE: 3/8" = 1'-0" A-13



**KITCHEN ELEVATION**  
SCALE: 3/8" = 1'-0" A-13



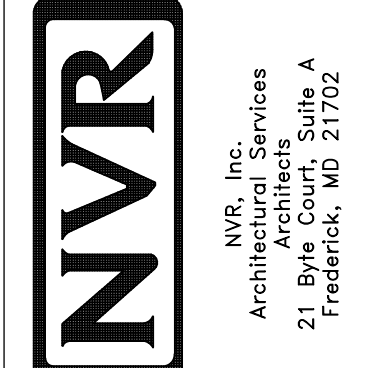
**KITCHEN ELEVATION**  
SCALE: 3/8" = 1'-0" A-13



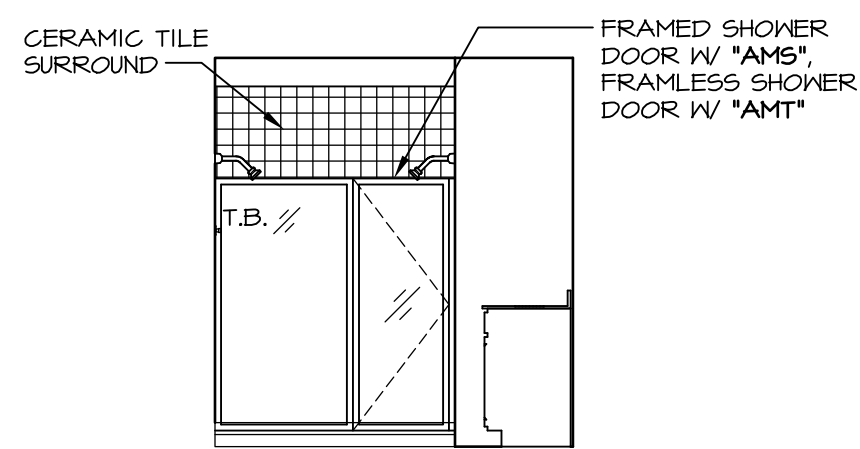
**KITCHEN ELEVATION**  
SCALE: 3/8" = 1'-0" A-13

REV. NO.	DATE	REMARKS
1	11/05/16	TRV - STANDARD DETAILS 5.0

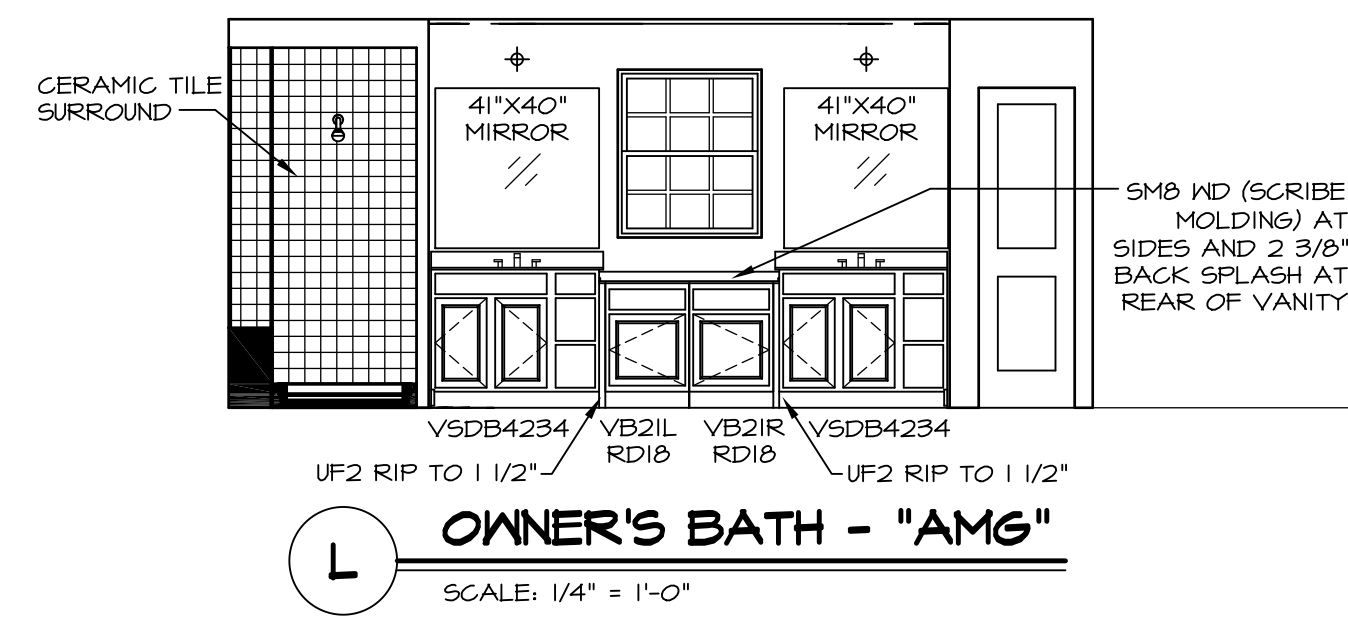
NVR, Inc., owner, expressly reserves its copyright in these plans. These plans are not to be reproduced, changed, copied, or otherwise used without the written consent of NVR, Inc.



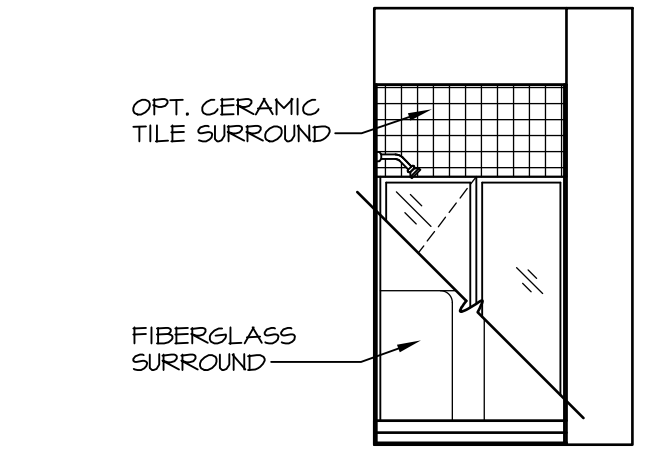
MODEL	NORMANDY
DRAWING TITLE	KITCHEN LAYOUT
OPTION DESCRIPTION	
SHEET NO.	A-13
SET NO.	NRM00
VERSION	01
DRAWN BY	RJC
DATE	6/29/15
OPTION	



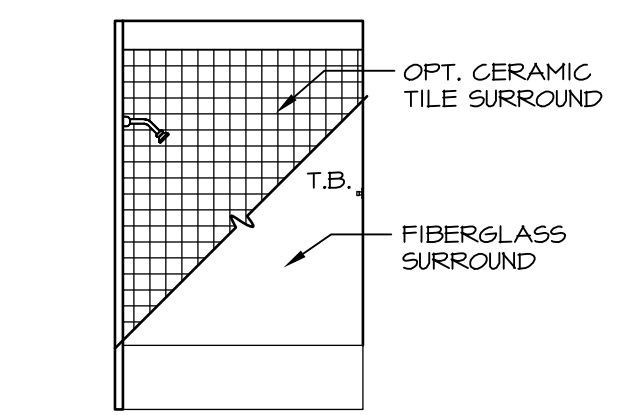
**M** OWNER'S BATH - "AMG"  
SCALE: 1/4" = 1'-0"



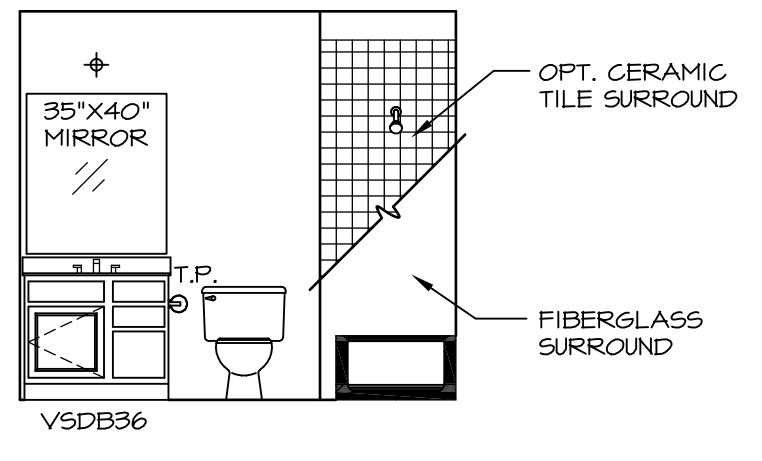
**L** OWNER'S BATH - "AMG"  
SCALE: 1/4" = 1'-0"



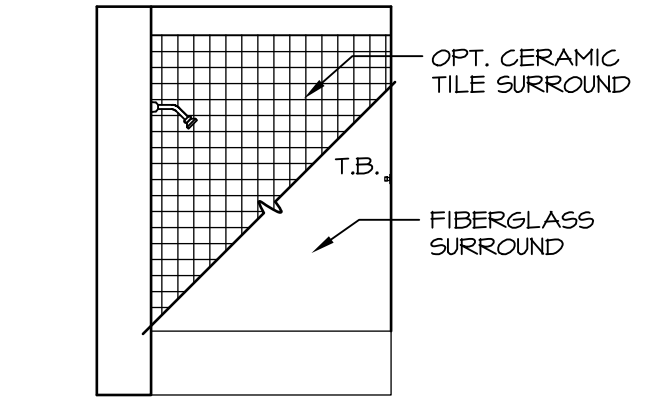
**E** FIRST FLOOR BATH - "BAR"  
SCALE: 1/4" = 1'-0"



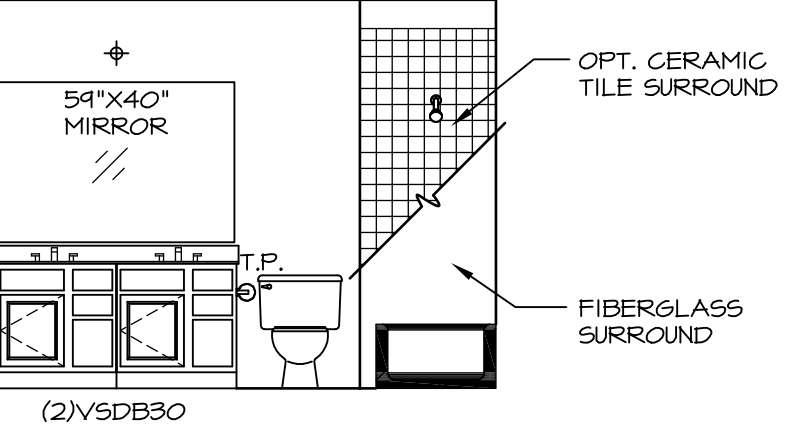
**J** BATH #2  
SCALE: 1/4" = 1'-0"



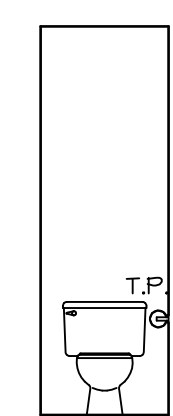
**H** BATH #2  
SCALE: 1/4" = 1'-0"



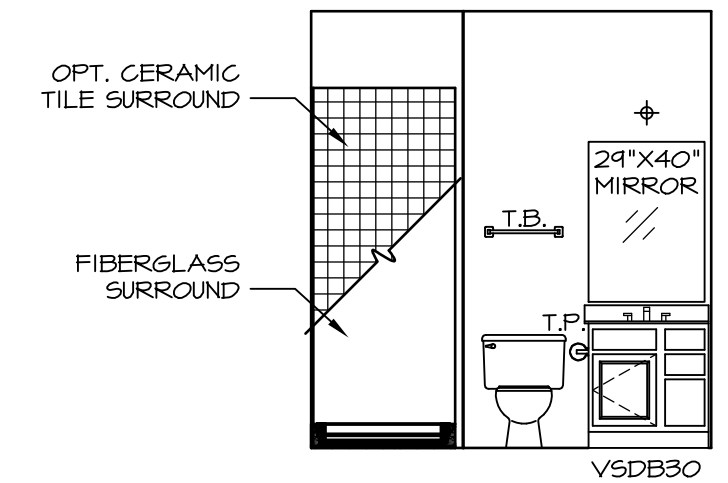
**G** BATH #1  
SCALE: 1/4" = 1'-0"



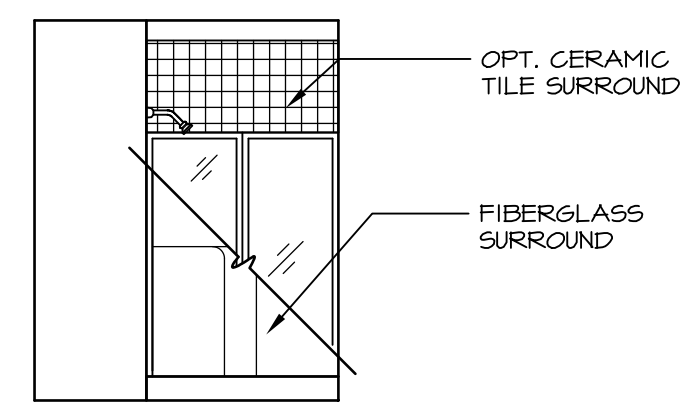
**F** BATH #1  
SCALE: 1/4" = 1'-0"



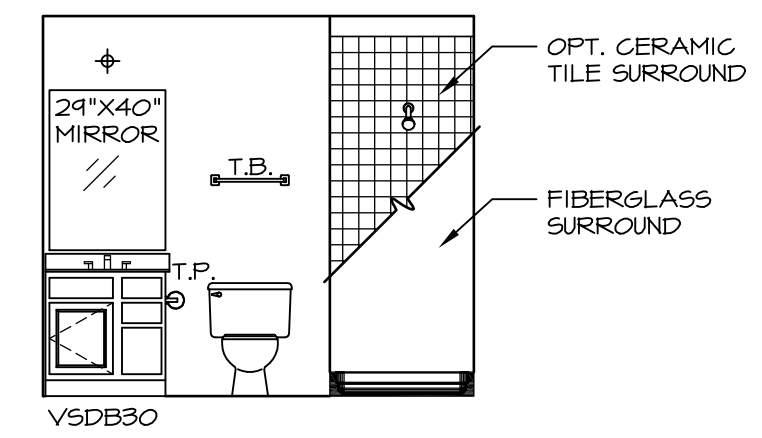
**K** OWNER'S BATH - "AMA" OR "AMG"  
SCALE: 1/4" = 1'-0"



**D** FIRST FLOOR BATH - "BAR"  
SCALE: 1/4" = 1'-0"



**B** BASEMENT BATH - "AEB"  
SCALE: 1/4" = 1'-0"



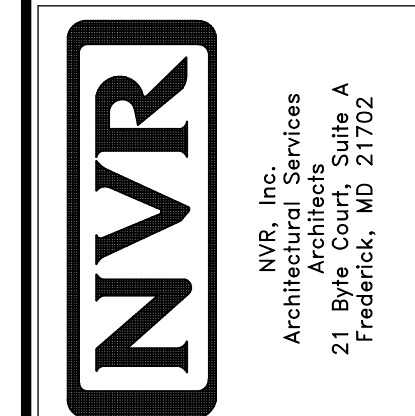
**A** BASEMENT BATH - "AEB"  
SCALE: 1/4" = 1'-0"

**NOTES:**

1. TEMPERED GLASS SHOWER ENCLOSURE WITH SWING DOOR OR OPTIONAL SLIDING DOOR BY DIVISION
2. TUB ACCESS PANELS PROVIDED AS NEEDED, ALL MATERIALS BY DIVISION
3. REFER TO SHEET (IT-2) FOR TUB AND SHOWER DETAILS.
4. ALL V5DB24-42 DRAWERS TO BE SET ON RIGHT HAND.
5. BATH ELEVATIONS ARE SHOWN PER PLAN.

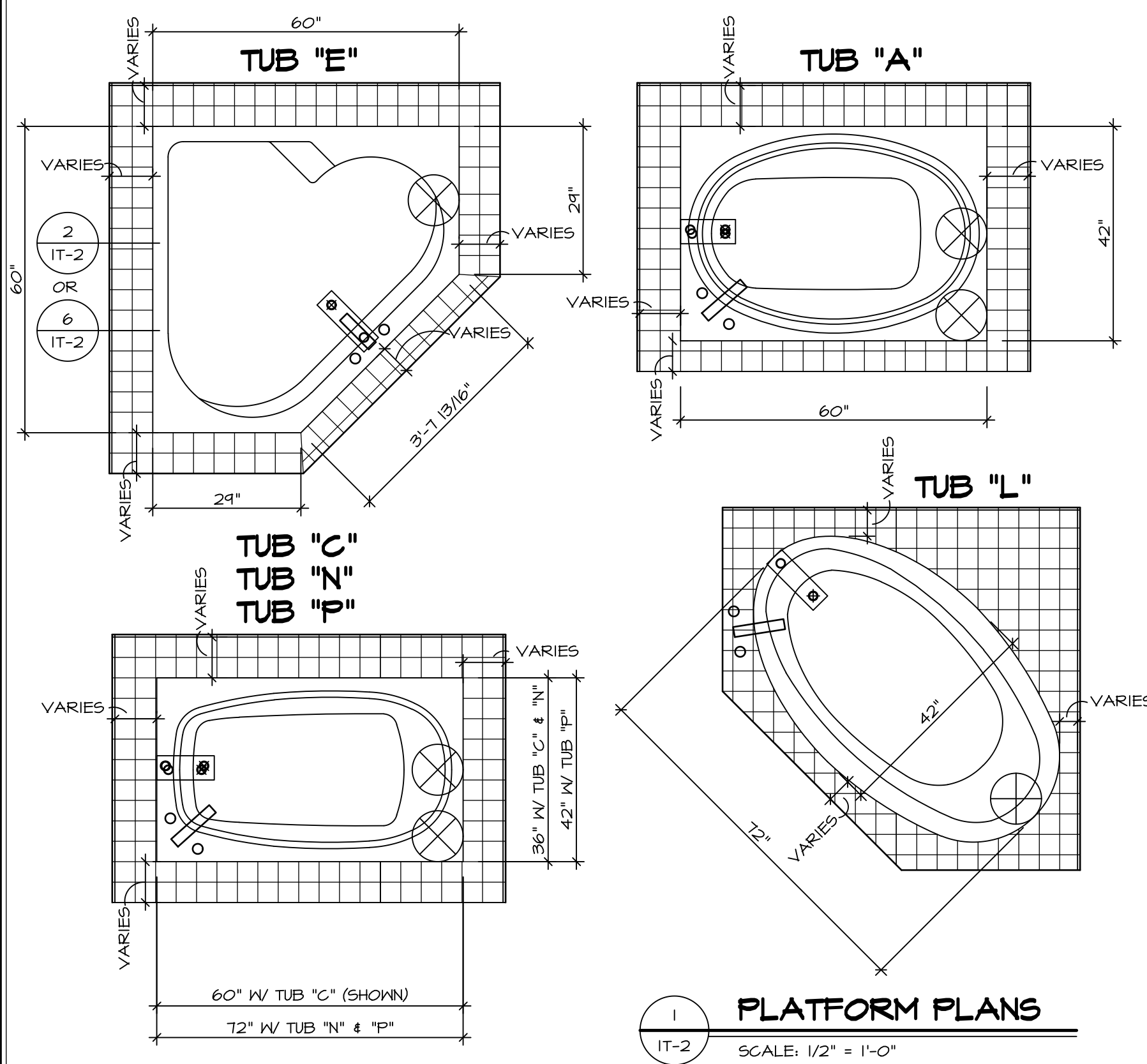
REV. NO.	DATE	REMARKS
1	08/07/16	N. - DRAWING ALIGNMENT
2	11/15/16	TRV - STANDARD DETAILS 5.0

NVR, Inc., owner, expressly reserves its copyright in these plans. These plans are not to be reproduced, changed, copied, or otherwise used in any way without the written consent of NVR, Inc.



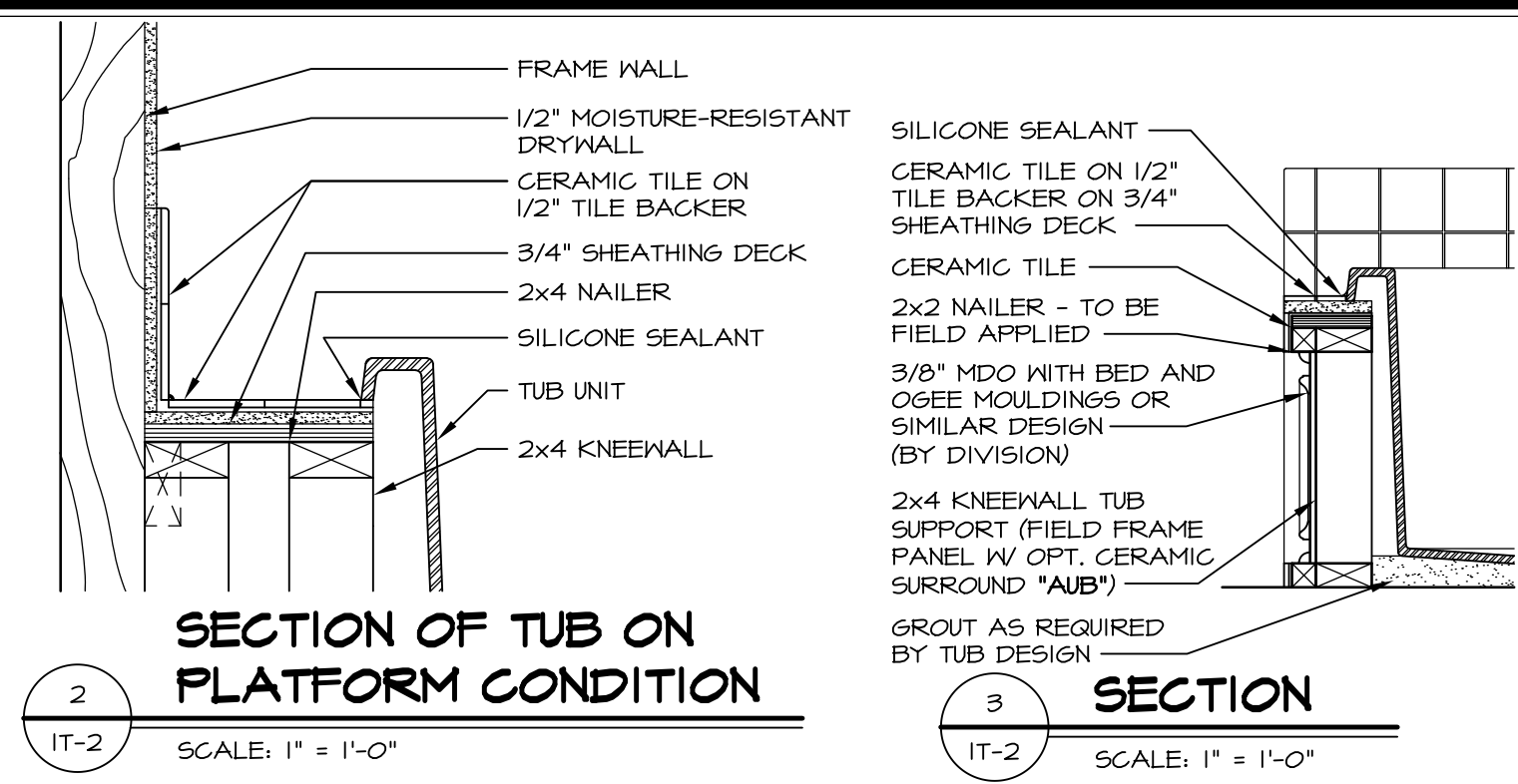
SET NO. NRM00	VERSION 01
DRAWN BY SGA	DATE: 5/29/15
OPTION	

MODEL NORMANDY	DRAWING TITLE BATH ELEVATIONS
SHEET NO. A-14	OPTION DESCRIPTION

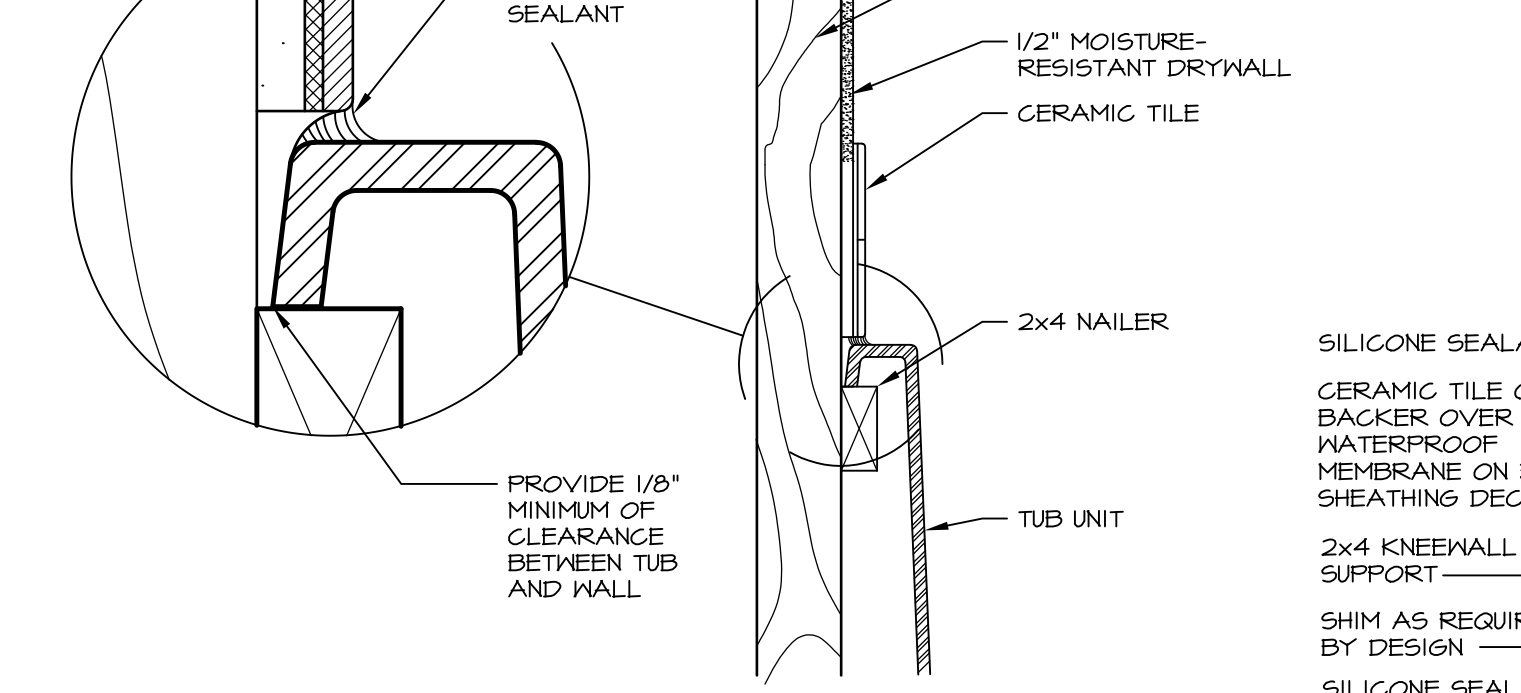


**1 PLATFORM PLANS**  
SCALE: 1/2" = 1'-0"

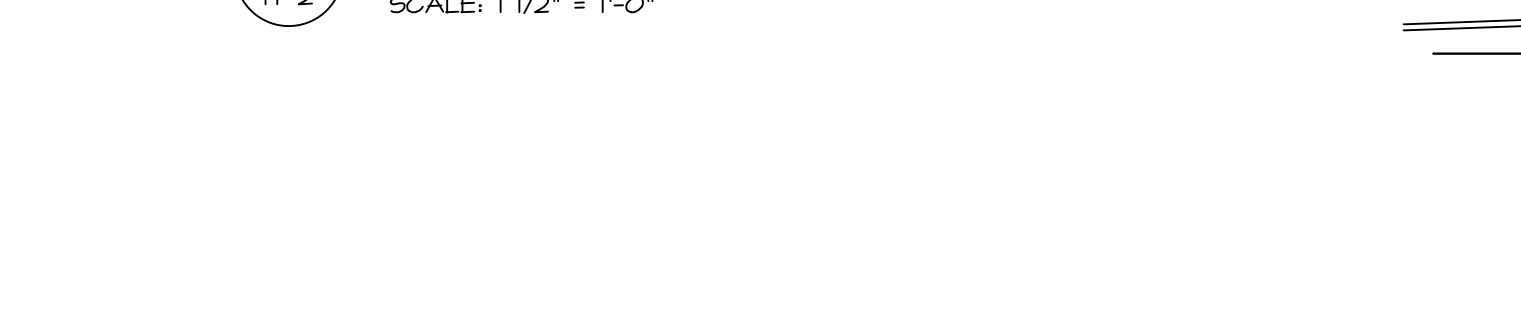
TUB	MANUF.	HEIGHT	WIDTH	LENGTH	TUB DECK PANEL HEIGHT
"A"	KOHLER/ STERLING	18 3/4"	42"	60"	17 1/8"
"C"	KOHLER/ STERLING	18 3/4"	36"	60"	17 1/8"
"E"	KOHLER/ STERLING	19 1/2"	60"	60"	17 7/8"
"L"	KOHLER/ STERLING	18 1/2"	42"	72"	16 7/8"
"N"	KOHLER/ STERLING	18 3/4"	36"	72"	17 1/8"
"P"	KOHLER/ STERLING	18 3/4"	42"	72"	17 1/8"



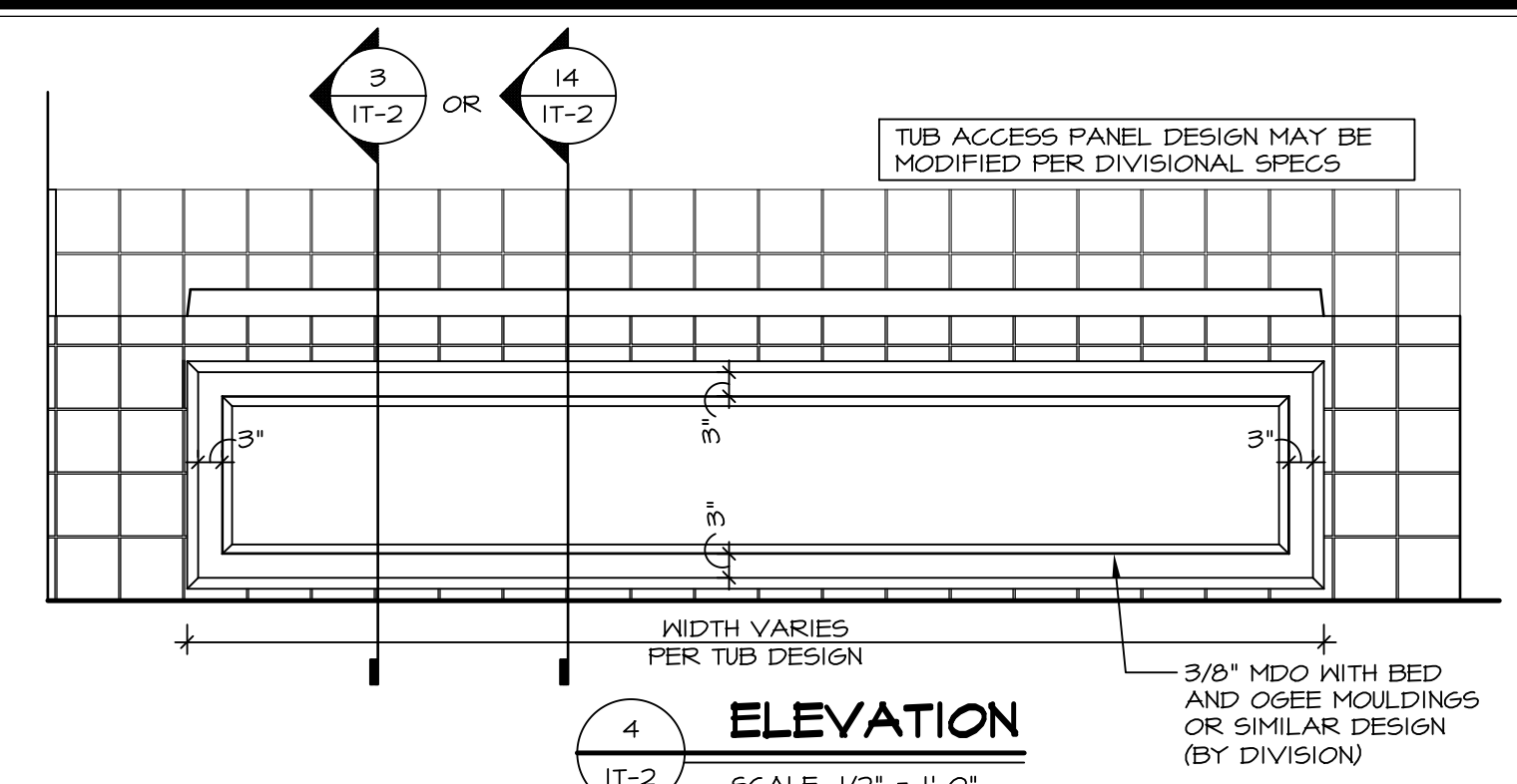
**2 SECTION OF TUB ON PLATFORM CONDITION**  
SCALE: 1" = 1'-0"



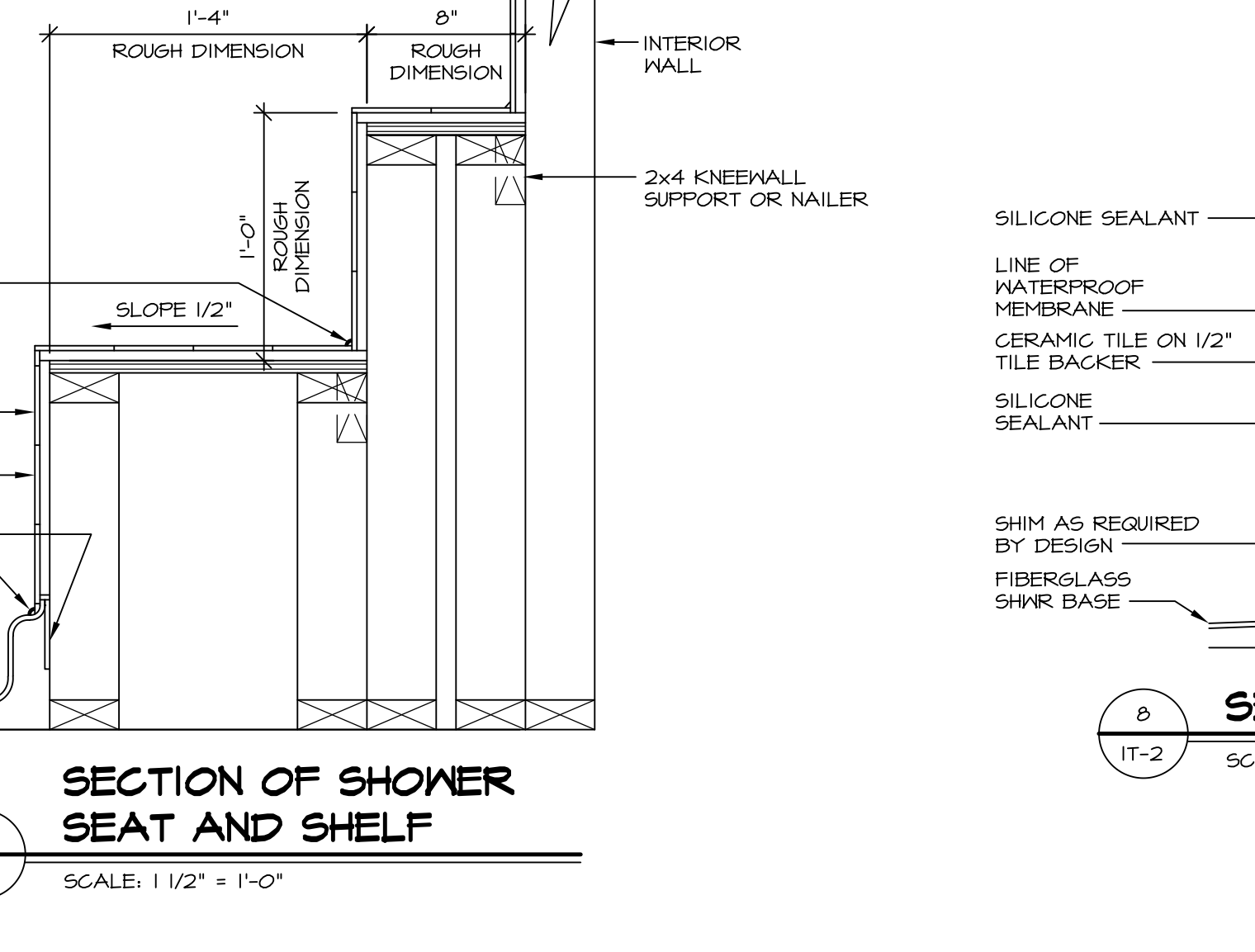
**3 SECTION**  
SCALE: 1" = 1'-0"



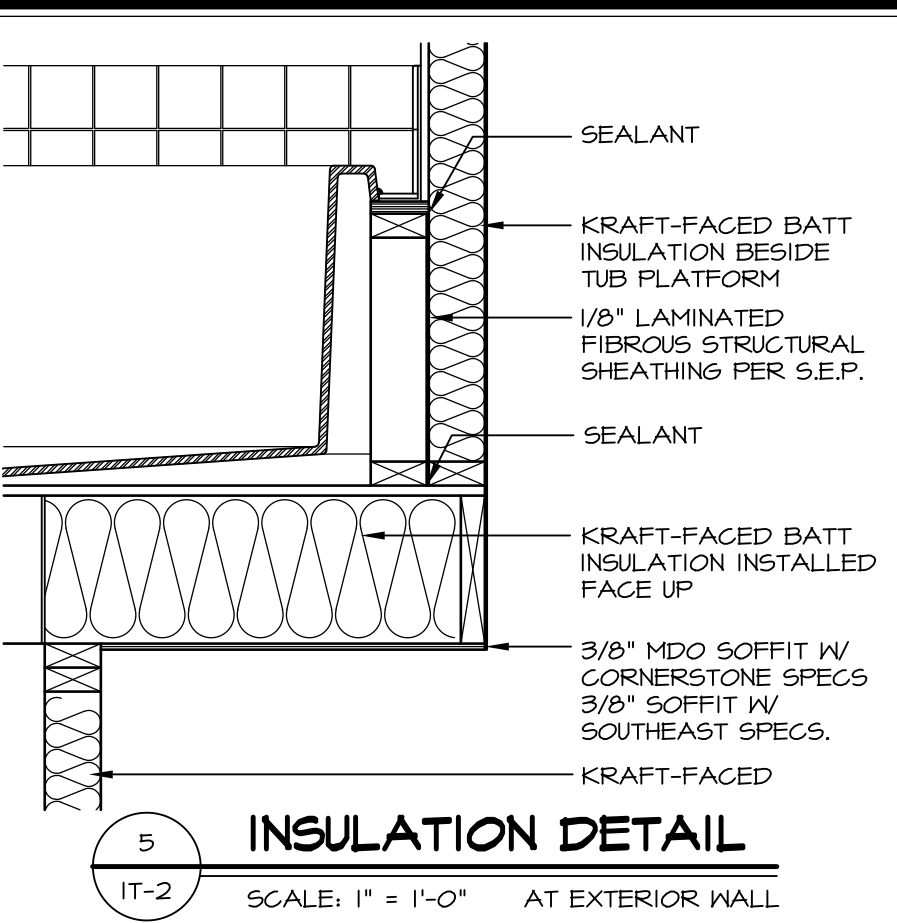
**6 SECTION OF TUB TO WALL CONDITION**  
SCALE: 1 1/2" = 1'-0"



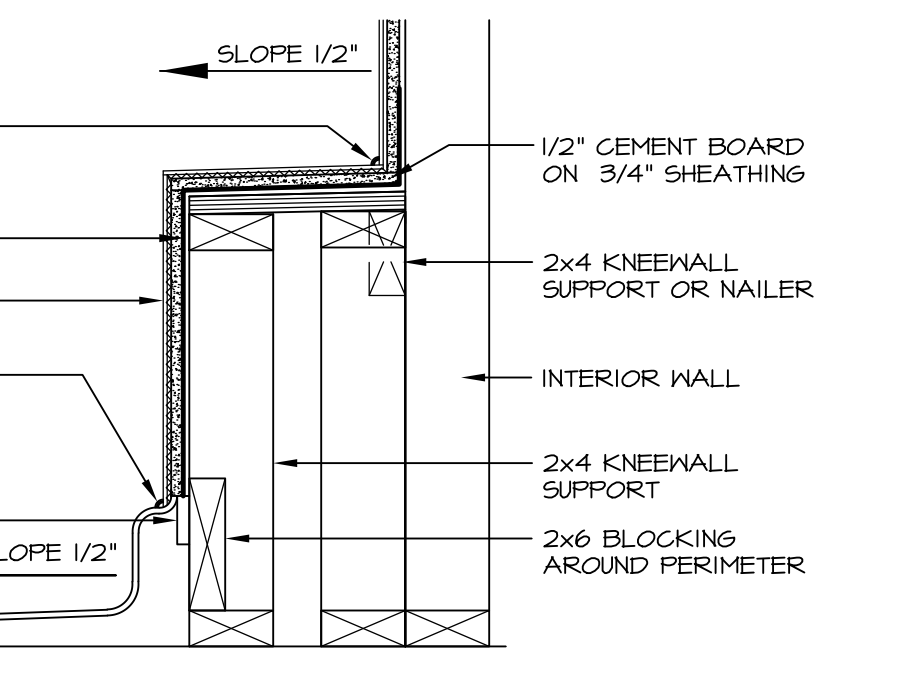
**4 ELEVATION**  
SCALE: 1/2" = 1'-0"



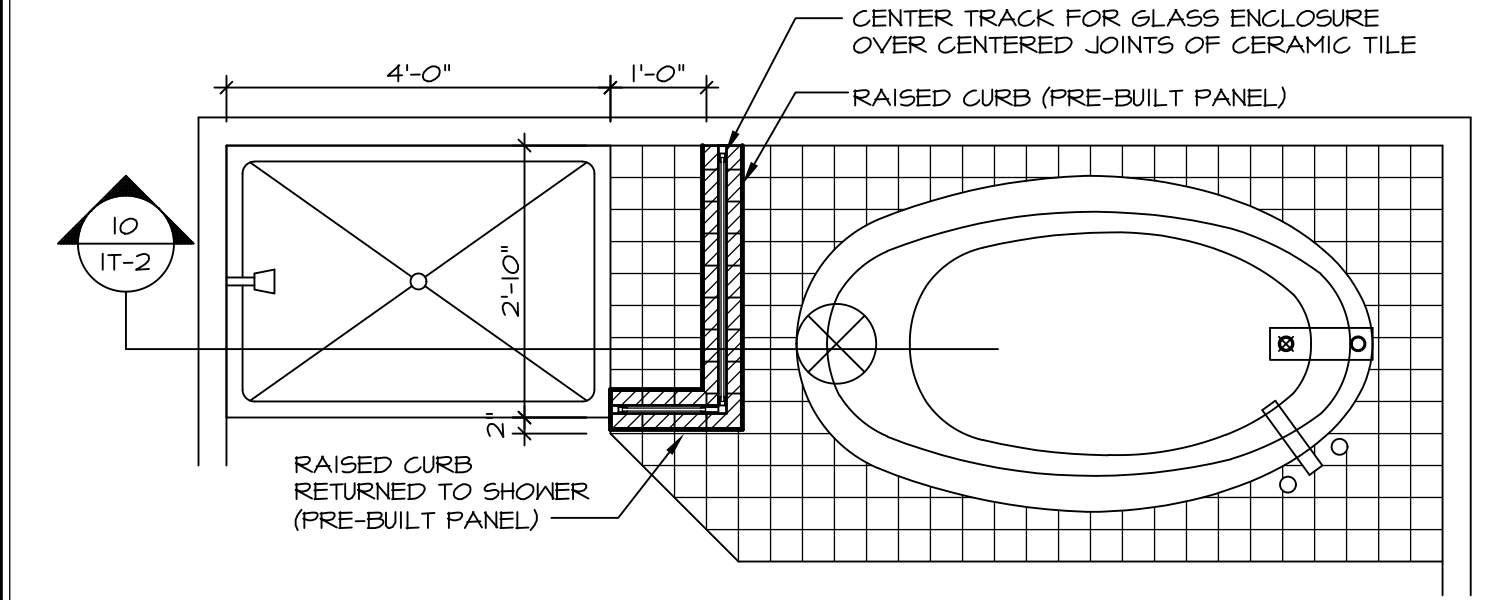
**7 SECTION OF SHOWER SEAT AND SHELF**  
SCALE: 1 1/2" = 1'-0"



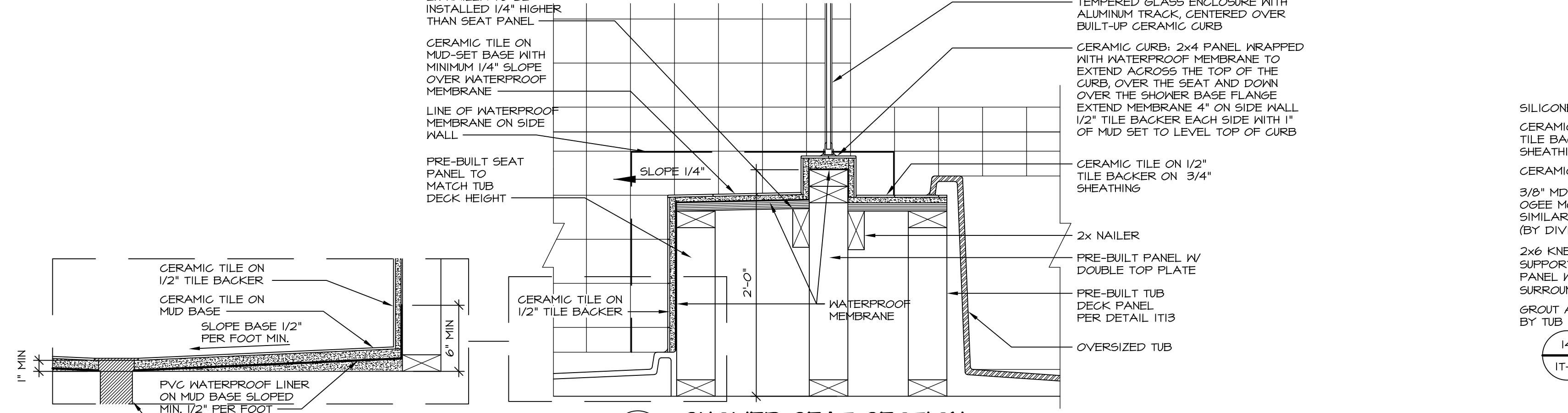
**5 INSULATION DETAIL**  
SCALE: 1" = 1'-0" AT EXTERIOR WALL



**8 SECTION OF SHOWER SEAT**  
SCALE: 1-1/2" = 1'-0" FIBERGLASS SHOWER BASE



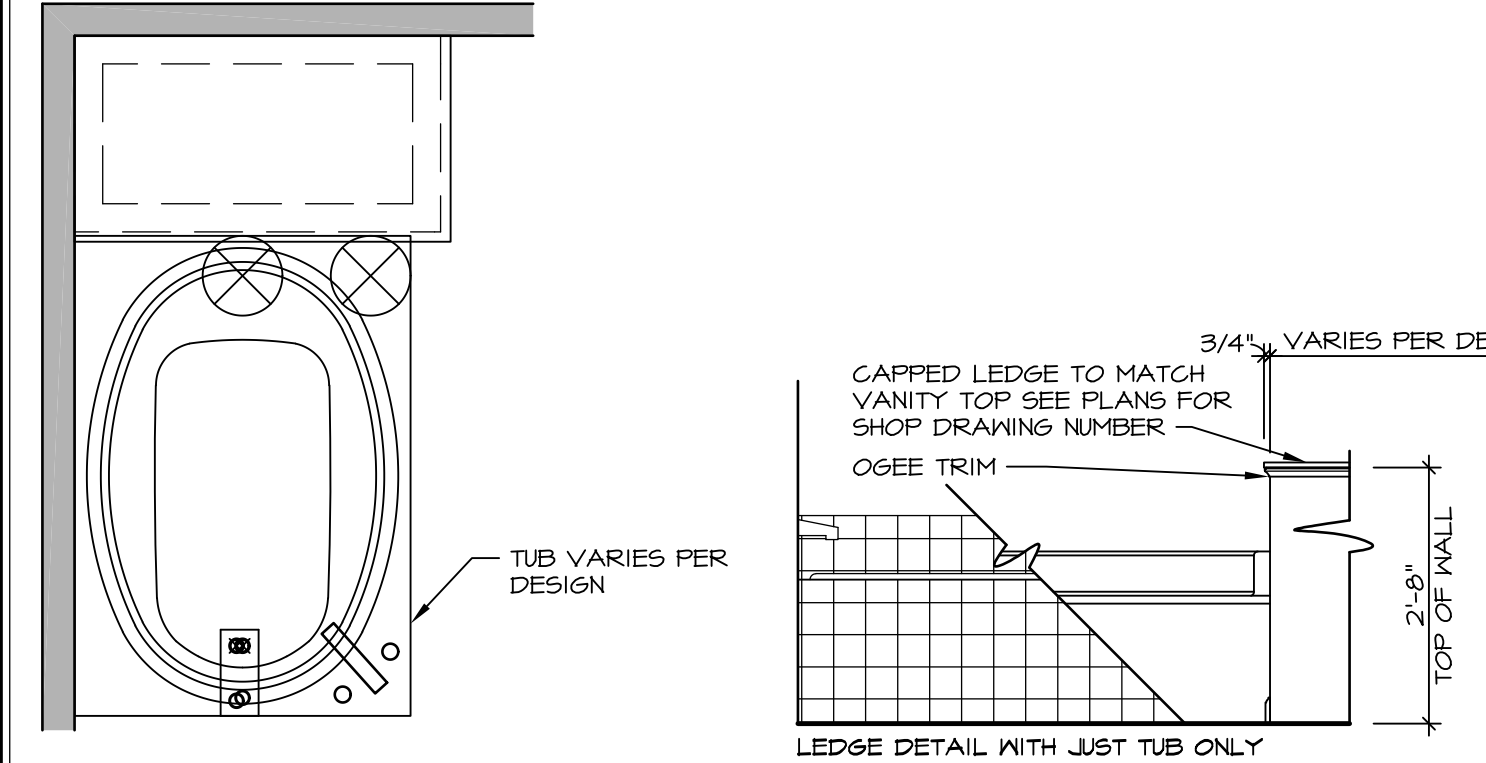
**9 SHOWER SEAT PLAN / DETAIL**  
SCALE: 1/2" = 1'-0"



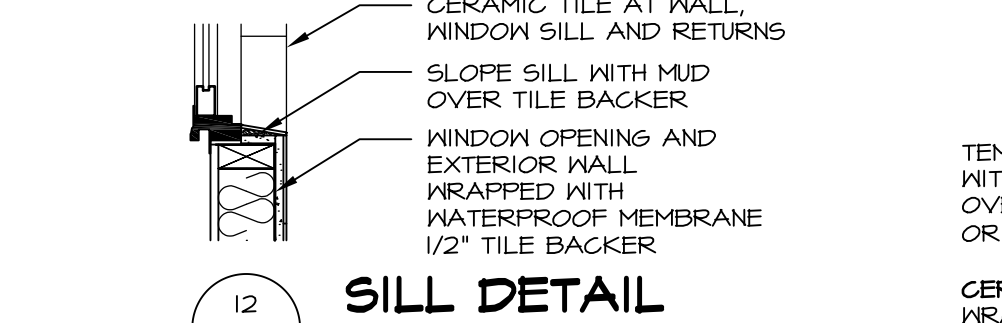
**10 SHOWER SEAT SECTION**  
SCALE: 1-1/2" = 1'-0"



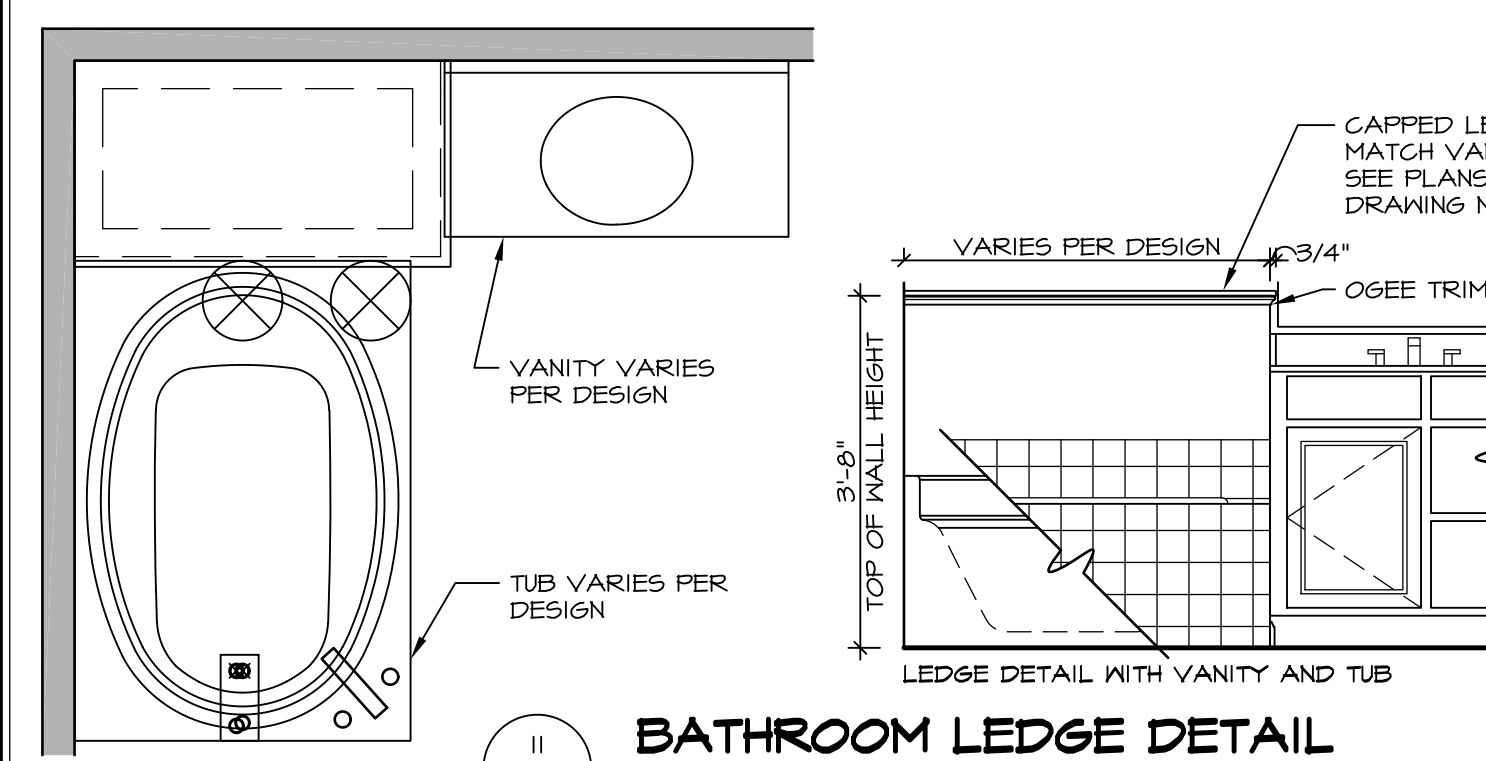
**11 ALTERNATE SHOWER PAN DETAIL**



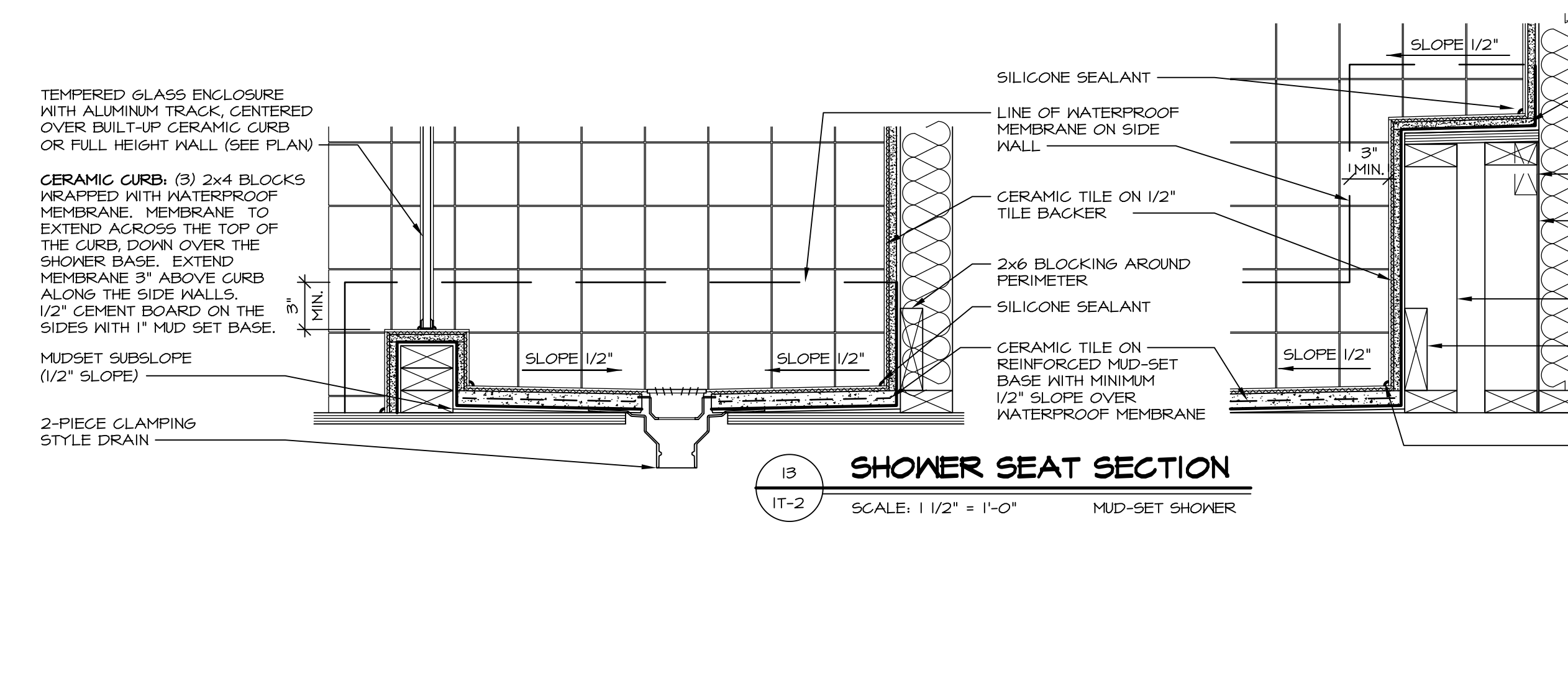
**12 BATHROOM LEDGE DETAIL**  
SCALE: 1" = 1'-0"



**12 SILL DETAIL**  
SCALE: 1" = 1'-0"



**11 BATHROOM LEDGE DETAIL**  
SCALE: 1/2" = 1'-0"

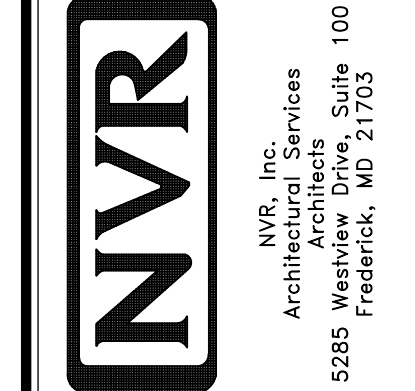


**13 SHOWER SEAT SECTION**  
SCALE: 1 1/2" = 1'-0" MUD-SET SHOWER

REVISIONS

REV. NO.	DATE	DESCRIPTION
1	5/1/17	EBP - REVISED DETAIL 1 AND 11 TO REMOVE TUB ACCESS PANEL REF. (DSS #15 5414)
2	9/2/17	EBP - REVISED T-FLY NOTE TO CALL OUT LFS
3	9/2/17	EBP - REVISED NOTE ON DETAIL #1 - REVISED ORDER OF MATERIAL PARA#4934

NVR, Inc., owner, expressly reserves its common law copyright and other property rights in these plans. These plans are not to be reproduced, copied, or otherwise used in any way without the prior written consent of NVR, Inc.



SET NO. NVR

VERSION

DRAWN BY

DATE:

OPTION

MODEL

**STANDARD DETAILS**

DRAWING TITLE

**INTERIOR TRIM DETAILS**

BATH DETAILS

OPTION DESCRIPTION

SHEET NO. **IT-2**

J:\Dwg\NVR\Interior Trim\IT2.dwg 09/27/17 - 9:20 am