

**PLUMBING PLAN**

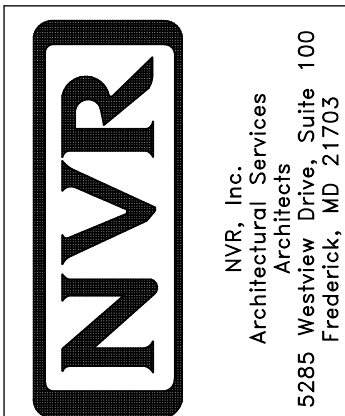
SCALE: 1/4" = 1'-0"

1  
A-5

SHEET NO.  
**A-5**  
48

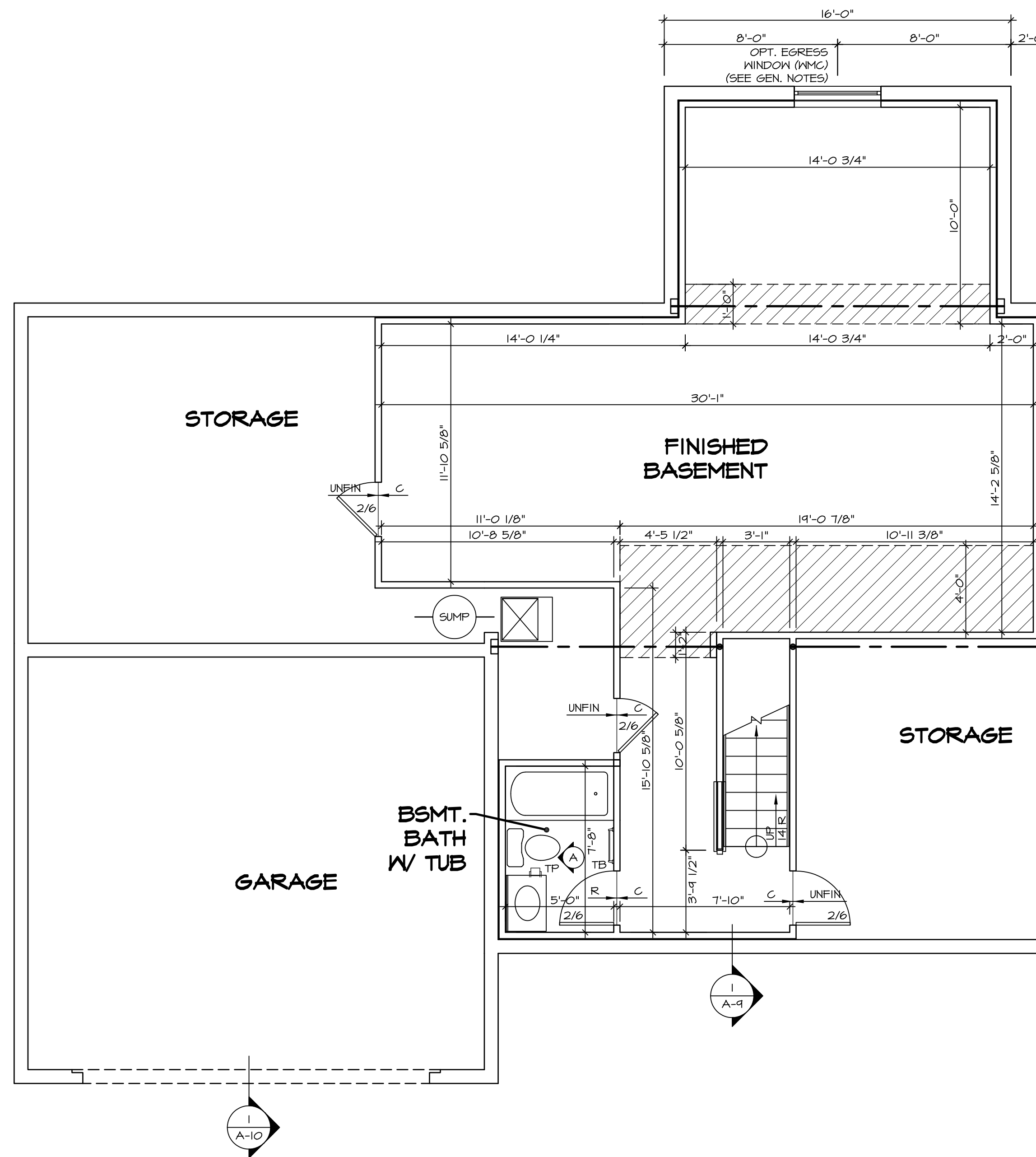
MODEL  
**PALERMO**  
DRAWING TITLE  
**PLUMBING PLAN**  
OPTION DESCRIPTION

SET NO. **PALOO**  
VERSION **03**  
DRAWN BY  
DATE:  
OPTION



NVR, Inc., owner, expressly reserves its copyright in these plans. These plans are not to be reproduced, changed, copied, altered, or otherwise used in any way without the prior written consent of NVR, Inc.

REV. NO.	DATE	REMARKS



LEGEND	
	BEARING WALL
	NON BEARING WALL
	INDICATES BEARING FROM POINT-LOAD ABOVE
	JACKS
	BEAM/HEADER
	PAD FOOTING
	STEEL COLUMN
	PORTAL FRAME
	JOIST/TRUSS
	LVL
	ENGINEERING PAGE NUMBER

SEE FC DETAILS FOR FRAMING CONNECTORS

- FLOOR PLAN NOTES**
1. ALL HEADERS ARE (2) 2x6 w/ 2x4 WALLS OR (3) 2x6 w/ 2x6 WALLS, UNLESS OTHERWISE NOTED.
  2. ALL HEADERS TO HAVE (1) 2x4 OR 2x6 JACK EACH END, UNLESS OTHERWISE NOTED.
  3. ALL EXTERIOR WALLS TO BE 4" AND ALL INTERIOR WALLS TO BE 3 1/2", UNLESS OTHERWISE NOTED.
  4. HATCHED AREAS INDICATE DROPPED CEILINGS. ALL DROPPED CEILINGS ARE 12" UNLESS OTHERWISE NOTED.
  5. SEE "BRACED WALL PANEL DETAIL SHEET" FOR SPECIAL WALL FRAMING LOCATIONS AND HEADER SIZES, IF APPLICABLE.
  6. SEE STANDARD DETAIL CATEGORY "IT" SHEET(S) FOR INTERIOR TRIM DETAILS.
  7. SEE ARCHITECTURAL DETAIL SHEET "AD" FOR HOUSE SPECIFIC INTERIOR TRIM OPTION TABLE.
  8. ALL WINDOWS HAVE 7'-0" 1/2" HEADER HEIGHT UNLESS OTHERWISE NOTED.
  9. ALL CASED OPENINGS AT T-11", UNLESS OTHERWISE NOTED.

- GYPSUM NOTES**
- AT GARAGE:  
GYPSUM BOARD AT COMMON WALLS, CEILING, BEAM WRAPS AND SUPPORTS PER STANDARD DETAIL FA-1(b) FIRE ASSEMBLIES OR AS REQUIRED BY LOCAL CODE.
- AT STAIRS:  
1/2" GYPSUM BOARD AT UNDERSIDE OF STAIRS AND WALLS IN CLOSET

**BASEMENT FLOOR PLAN**  
SCALE: 1/4" = 1'-0"

SHEET NO.	MODEL	SET NO.	DATE	REV. NO.	DATE	REMARKS
A-6	PALERMO	03	08/05/16	1		
51						

SET NO. PALERO  
 VERSION 03  
 DRAWN BY  
 DATE:  
 OPTION

**PALERMO**  
 DRAWING TITLE  
 BASEMENT FLOOR PLAN  
 OPTION DESCRIPTION

NVR, Inc.  
 Architectural Services  
 Architects  
 5285 West  
 Frederick, MD 21703

NVR, Inc., owner, expressly  
 reserves its common law copyright  
 in these plans. These plans are not to be  
 reproduced, changed, adapted in  
 any way, or otherwise used, without  
 the prior written consent of NVR, Inc.

C:\NVR\Solves\PALERMO\_PAL00\_03\DCY-YG-K419\678074\Sheets\1.dwg 02/13/19 - 3:38 am

FIRST FLOOR JACK SCHEDULE				
IDENTIFIER	DESCRIPTION	OPTIONS	ENG. NUM.	REMARKS
J101	JACK - (2) 2X4 SPF STUD GRADE		1072	
J102	JACK - (2) 2X4 SPF STUD GRADE		1072	
J106	JACK - (2) 2X4 SPF STUD GRADE		1012	
J107	JACK - (2) 2X4 SPF STUD GRADE		1012	
J108	JACK - (2) 2X4 SPF STUD GRADE		1012	
J104	JACK - (3) 2X4 SPF STUD GRADE	GCB	1046	
J110	JACK - (3) 2X4 SPF STUD GRADE	GCB	1046	
J120	JACK - (4) 2X6 SPF STUD GRADE	MAA	1014	
J121	JACK - (3) 2X6 SPF STUD GRADE	MAA	1014	FIELD INSTALLED
J122	JACK - (3) 2X4 SPF STUD GRADE	SRN	1040	
J133	JACK - (2) 2X4 SPF STUD GRADE	GCBMAV	1044, 1131	CRIPPLES
J134	JACK - (2) 2X4 SPF STUD GRADE	GCBMAV	1044, 1131	CRIPPLES
J157	JACK - (2) 2X4 SP#	ELE	1021	
J167	JACK - (2) 2X4 SPF STUD GRADE	L66	1082	
J168	JACK - (2) 2X4 SPF STUD GRADE	L66	1082	
J170	JACK - (2) 2X4 SP#	ELE		

**LVL PLY TO PLY FASTENING SCHEDULE:**

1A - (2) FLY UP TO AND INCLUDING 11 7/8" TALL; FASTEN FLIES W/ (2) ROWS 16D NAILS AT 12" O.C.  
 2A - (2) FLY 14" TO AND INCLUDING 18" TALL (INCLUSIVE); FASTEN FLIES W/ (3) ROWS 16D NAILS AT 12" O.C.  
 3A - (2) FLY 20" TALL AND OVER; FASTEN FLIES W/ (4) ROWS 16D NAILS AT 12" O.C.  
 4A - (3) FLY UP TO AND INCLUDING 11 7/8" TALL; FASTEN FLIES W/ (2) ROWS 16D NAILS AT 12" O.C. FROM EACH SIDE  
 5A - (3) FLY 14" TO AND INCLUDING 18" TALL (INCLUSIVE); FASTEN FLIES W/ (3) ROWS 16D NAILS AT 12" O.C. FROM EACH SIDE  
 6A - (3) FLY 20" TALL AND OVER; FASTEN FLIES W/ (4) ROWS 16D NAILS AT 12" O.C. FROM EACH SIDE

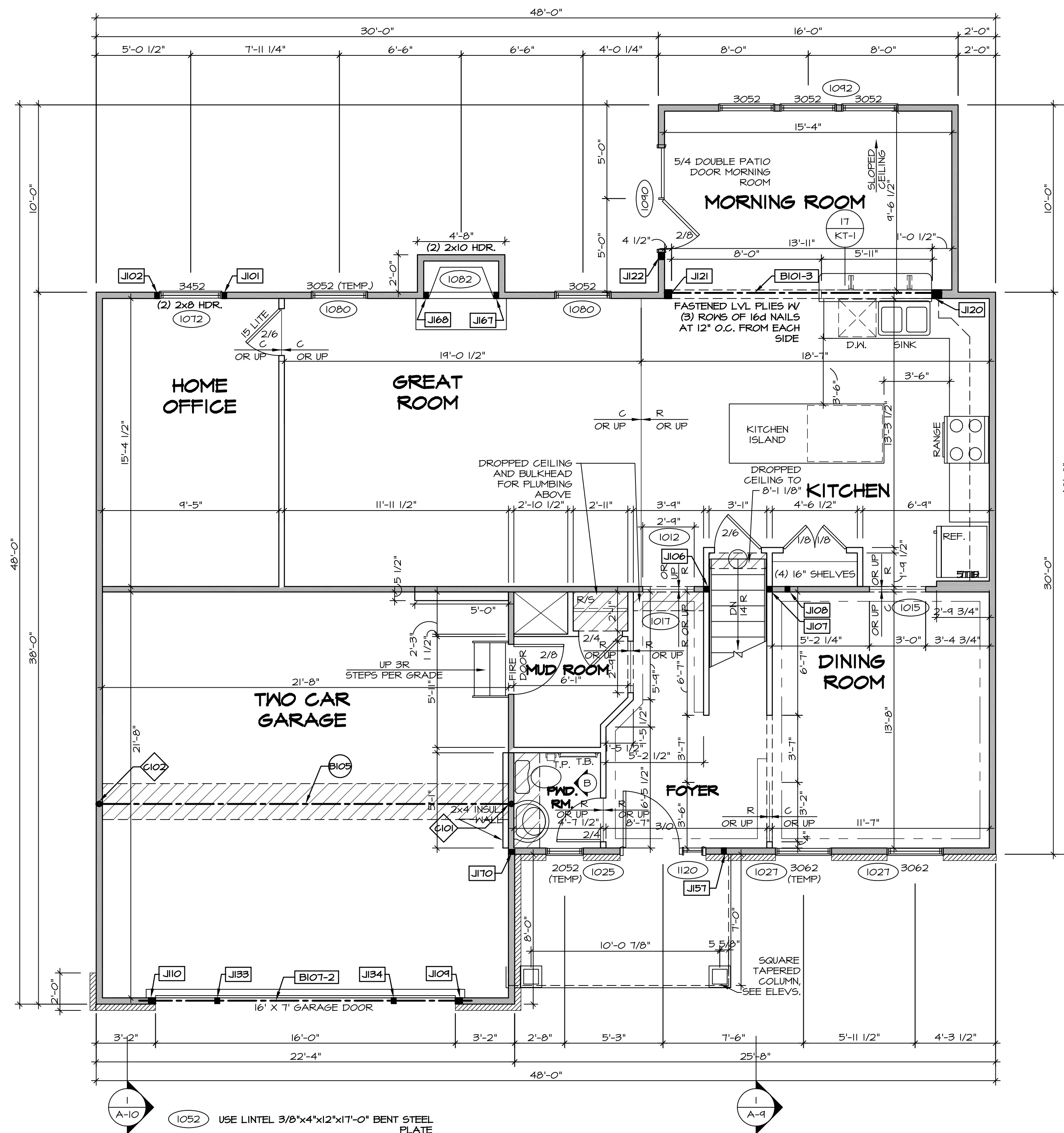
FIRST FLOOR BEAM/HEADER SCHEDULE					
IDENTIFIER	DESCRIPTION	LENGTH	OPTIONS	ENG. NUM.	REMARKS
B101-3	LVL - 16	14'-4 1/2"	MAA	1014	5A, FIELD INSTALL
B105	BEAM STEEL - W12X40	22'-3 1/2"	ELE, MAV	1057, 1133	
B107-2	LVL - 14	17'-4"	MAV	1050, 1051	2A, FIELD INSTALL

LEGEND	
	BEARING WALL
	NON BEARING WALL
	INDICATES BEARING FROM POINT-LOAD ABOVE
	JACKS
	BEAM/HEADER
	PAD FOOTING
	STEEL COLUMN
	PORTAL FRAME
	JOIST/TRUSS
	LVL
	ENGINEERING PAGE NUMBER

- FLOOR PLAN NOTES**
- ALL HEADERS ARE (2) 2x6 W/ 2x4 WALLS OR (3) 2x6 W/ 2x6 WALLS, UNLESS OTHERWISE NOTED.
  - ALL HEADERS TO HAVE (1) 2x4 OR 2x6 JACK AND KING STUD EACH END, UNLESS OTHERWISE NOTED.
  - ALL EXTERIOR WALLS TO BE 4" W/ OSB OR 3 1/2" W/ T-PLY, ALL INTERIOR WALLS TO BE 3 1/2", UNLESS OTHERWISE NOTED.
  - HATCHED AREAS INDICATE DROPPED CEILINGS. ALL DROPPED CEILINGS ARE 12" UNLESS OTHERWISE NOTED.
  - SEE 'BRACED WALL PANEL DETAIL SHEET' FOR SPECIAL WALL FRAMING LOCATIONS AND HEADER SIZES, IF APPLICABLE.
  - SEE STANDARD DETAIL CATEGORY 'IT' SHEET(S) FOR INTERIOR TRIM DETAILS.
  - SEE ARCHITECTURAL DETAIL SHEET 'AD' FOR HOUSE SPECIFIC INTERIOR TRIM OPTION TABLE.
  - ALL WINDOWS HAVE 7'-0 1/2" HEADER HEIGHT UNLESS OTHERWISE NOTED.
  - ALL HEADERS IN NON-BEARING WALLS SHALL BE A SINGLE FLAT 2X4 OR 2X6 ATTACHED TO CRIPPLES ABOVE, UNLESS OTHERWISE NOTED.

- GYPSUM NOTES**
- AT GARAGE:**  
 GYPSUM BOARD AT COMMON WALLS, CEILING, BEAM WRAPS AND SUPPORTS PER STANDARD DETAIL FA-1(b) FIRE ASSEMBLIES OR AS REQUIRED BY LOCAL CODE.
- AT STAIRS:**  
 1/2" GYPSUM BOARD AT UNDERSIDE OF STAIRS AND WALLS IN CLOSET

STEEL COLUMN SCHEDULE					
IDENTIFIER	STYLE	HEIGHT	OPTIONS	ENG. NUM.	REMARKS
C101	STANCHION - 3 IN SCHED 40	9'-0 11/16"	FBA	1057, 1133, 1128	
C102	STANCHION - 3 IN SCHED 40	9'-0 11/16"	FBA	1057, 1133, 1128	



**FIRST FLOOR PLAN**  
 SCALE: 1/4" = 1'-0"

REV. NO.	DATE	DESCRIPTION	REMARKS
1	08/04/16	TH - DRAWING ALIGNMENT	
2	07/27/17	SLS - T-PLY CONVERSION PROJECT	

SET NO. PALOO  
 VERSION 03  
 DRAWN BY  
 DATE:  
 OPTION

**PALERMO**  
 DRAWING TITLE  
 FIRST FLOOR PLAN  
 OPTION DESCRIPTION

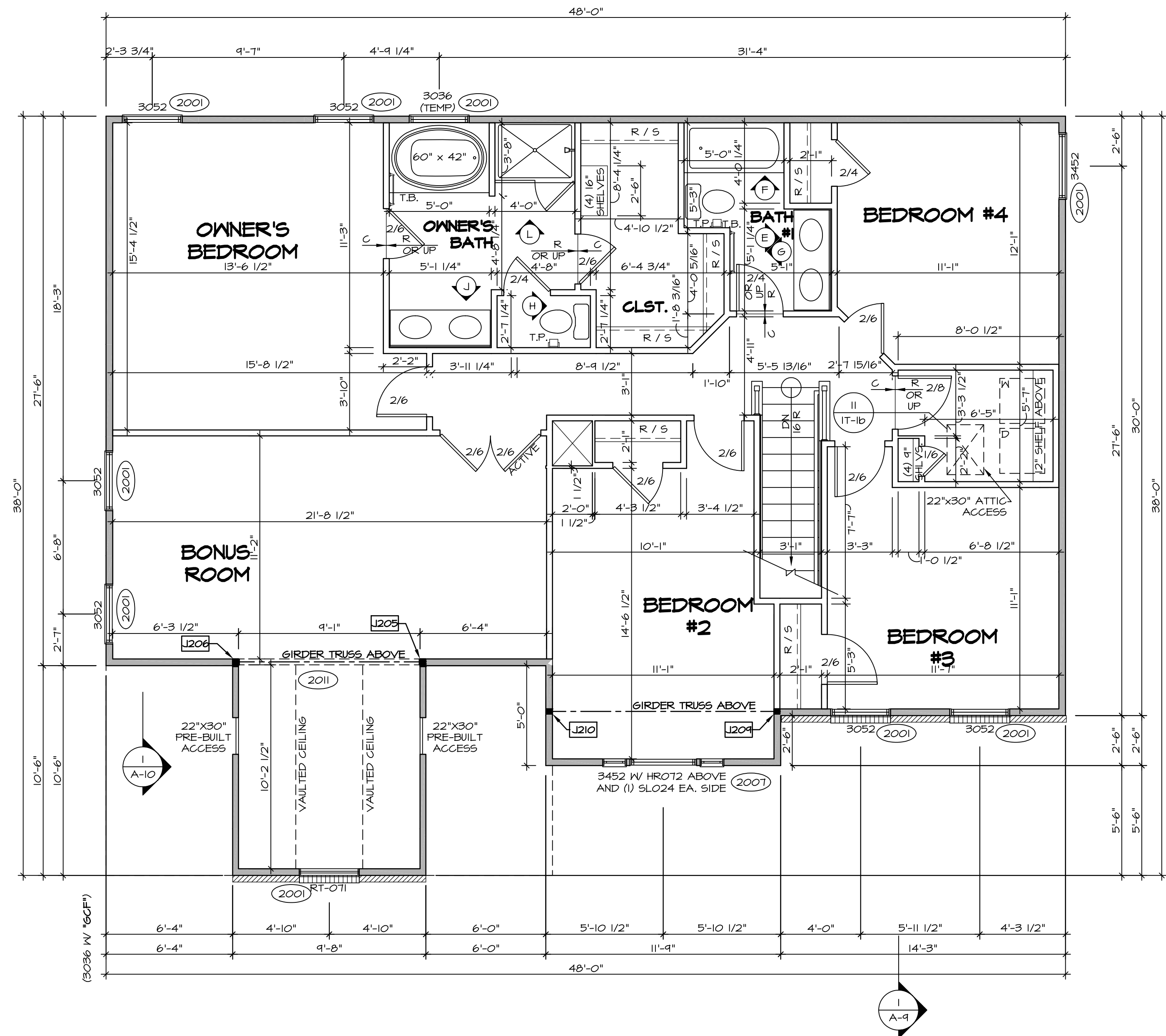
**NVR**  
 NVR, Inc.  
 Architectural Services  
 5285 Washburn Ave  
 Frederick, MD 21703  
 301.771.1111

SHEET NO. **A-7**  
 53

SECOND FLOOR JACK SCHEDULE				
IDENTIFIER	DESCRIPTION	OPTIONS	ENG. NUM.	REMARKS
J205	JACK - (3) 2X4 SFF STUD GRADE	MAY	2011	
J206	JACK - (3) 2X4 SFF STUD GRADE	MAY	2011	
J204	JACK - (2) 2X4 SFF#1	ELE	2011	
J210	JACK - (2) 2X4 SFF#1	ELE	2011	

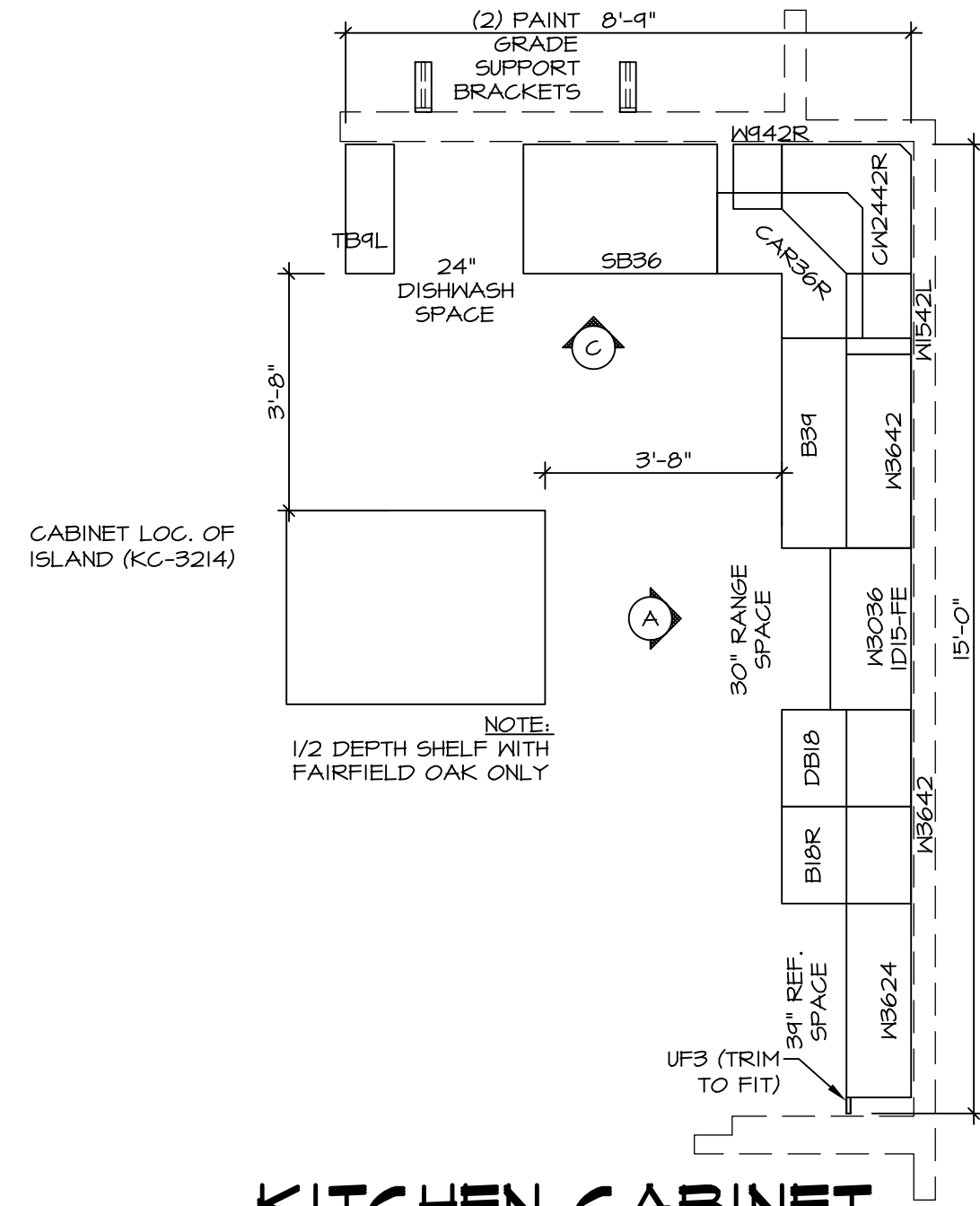
LEGEND	
	BEARING WALL
	NON BEARING WALL
	INDICATES BEARING FROM POINT-LOAD ABOVE
	JACKS
	BEAM/HEADER
	PAD FOOTING
	STEEL COLUMN
	PORTAL FRAME
	JOIST/TRUSS
	LVL
	ENGINEERING PAGE NUMBER

- FLOOR PLAN NOTES**
- ALL HEADERS ARE (2) 2x6 w/ 2x4 WALLS OR (3) 2x6 w/ 2x6 WALLS, UNLESS OTHERWISE NOTED.
  - ALL HEADERS TO HAVE (1) 2x4 OR 2x6 JACK AND KING STUD EACH END, UNLESS OTHERWISE NOTED.
  - ALL EXTERIOR WALLS TO BE 4" w/ OSB OR 3 1/2" w/ T-PLY, ALL INTERIOR WALLS TO BE 3 1/2", UNLESS OTHERWISE NOTED.
  - HATCHED AREAS INDICATE DROPPED CEILINGS. ALL DROPPED CEILINGS ARE 12" UNLESS OTHERWISE NOTED.
  - SEE "BRACED WALL PANEL DETAIL SHEET" FOR SPECIAL WALL FRAMING LOCATIONS AND HEADER SIZES, IF APPLICABLE.
  - SEE STANDARD DETAIL CATEGORY "1T" SHEET(S) FOR INTERIOR TRIM DETAILS.
  - SEE ARCHITECTURAL DETAIL SHEET "AD" FOR HOUSE SPECIFIC INTERIOR TRIM OPTION TABLE.
  - ALL WINDOWS HAVE 7'-0 1/2" HEADER HEIGHT UNLESS OTHERWISE NOTED.
  - ALL HEADERS IN NON-BEARING WALLS SHALL BE A SINGLE FLAT 2x4 OR 2x6 ATTACHED TO CRIPPLES ABOVE, UNLESS OTHERWISE NOTED.

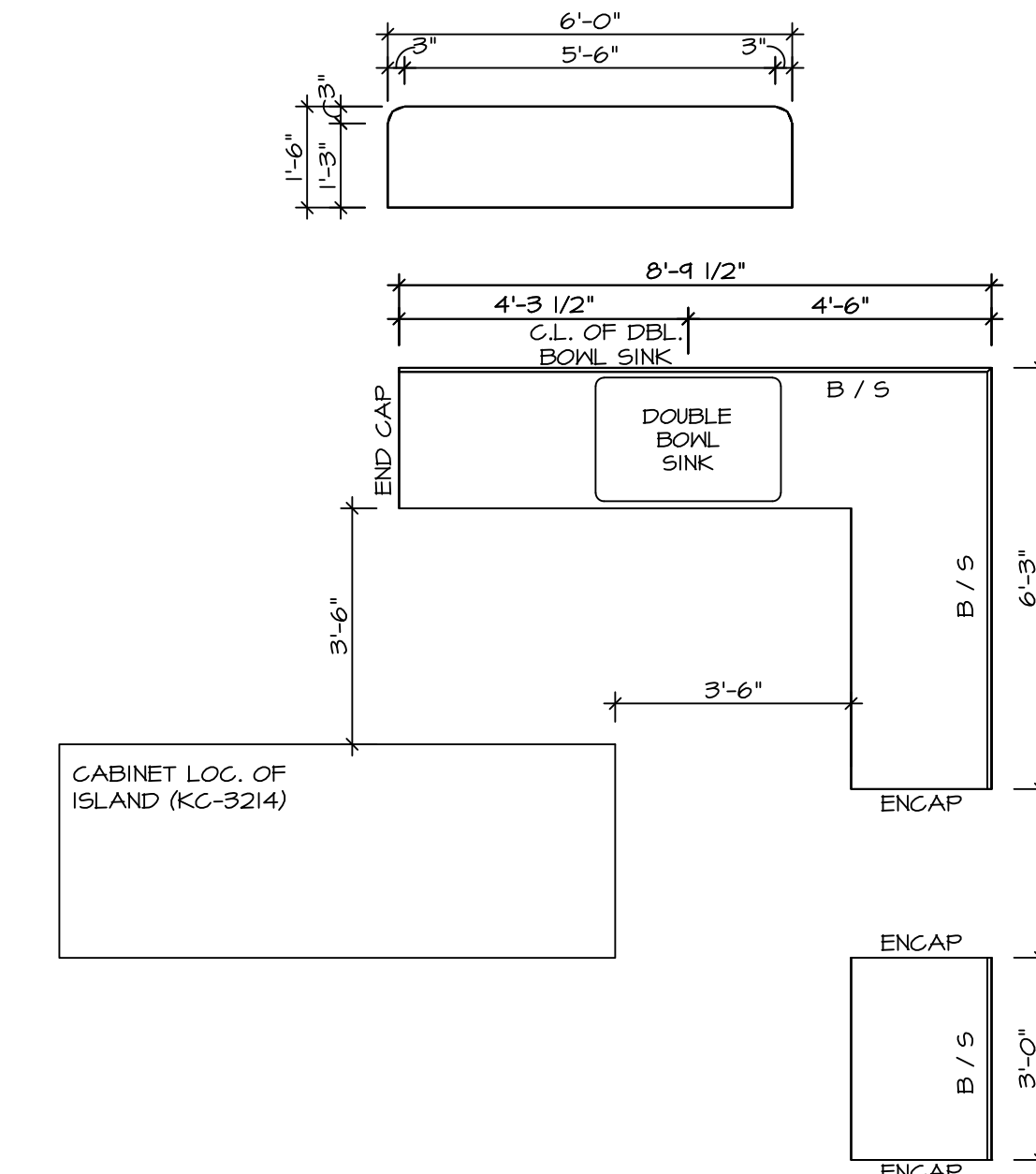


**SECOND FLOOR PLAN**  
SCALE: 1/4" = 1'-0"

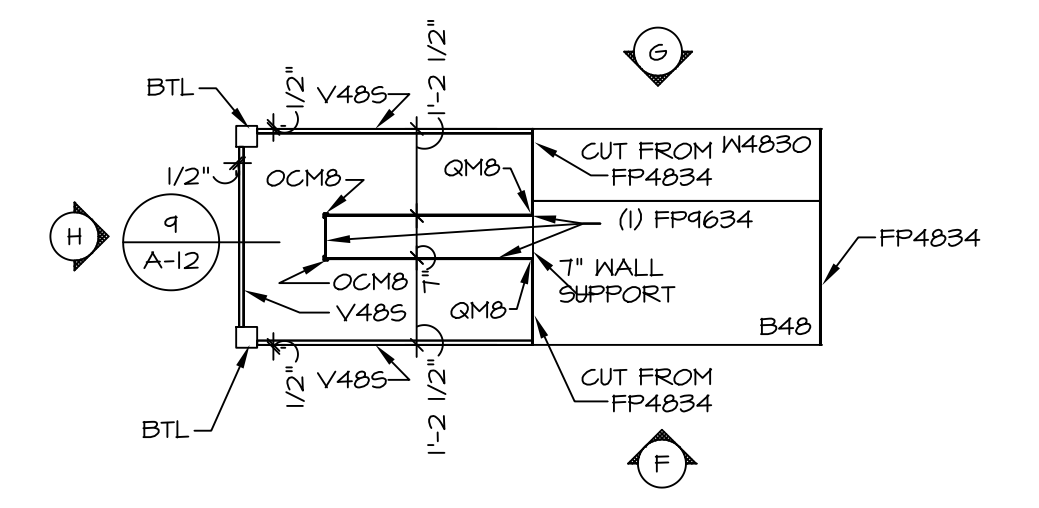
SHEET NO. <b>A-8</b>	MODEL <b>PALERMO</b>	DRAWING TITLE <b>SECOND FLOOR PLAN</b>	OPTION DESCRIPTION <b>60</b>	SET NO. <b>PALOO</b>	VERSION <b>03</b>	DRAWN BY	DATE:	OPTION
				<p>REMARKS</p> <p>1 08/04/16 TH - DRAWING ALIGNMENT</p> <p>2 07/12/17 SLS - T-PLY CONVERSION PROJECT</p>				
<p>NVR, Inc., owner, expressly reserves its copyright in these plans. These plans are not to be reproduced, changed, copied, or otherwise used in any way without the prior written consent of NVR, Inc.</p>				<p><b>NVR</b> NVR, Inc. Architectural Services 100 5285 West Frederick, MD 21703</p>				
<p>C:\NVR\Solves\PALERMO_PALOO_03\DCY-YG-K419\678074\Sheets\1.ctb - Specific\60 A-8 FLN2_LS.dwg 02/13/18 - 3:58 pm</p>								



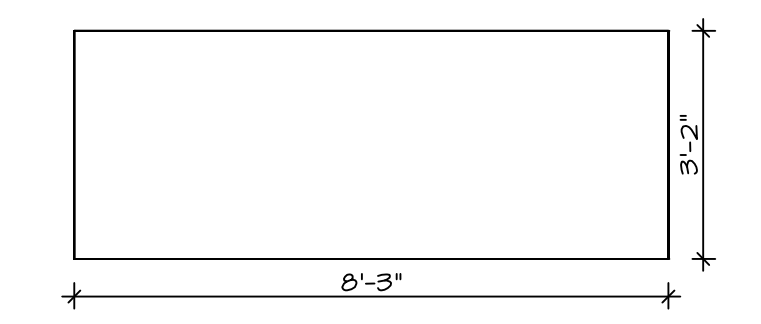
**KITCHEN CABINET PLAN-KC-2862**  
 STANDARD KITCHEN MORNING ROOM SCALE: 3/8" = 1'-0" A-12



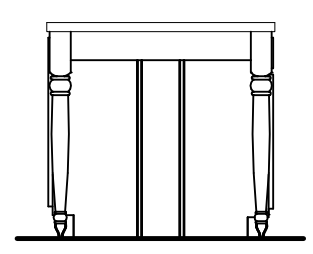
**KITCHEN COUNTERTOP PLAN-KT-2862**  
 STANDARD KITCHEN MORNING ROOM SCALE: 3/8" = 1'-0" A-12



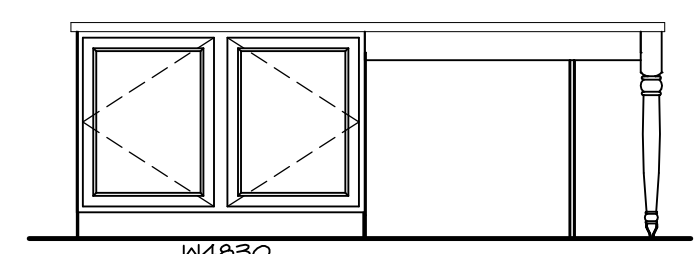
**KITCHEN CABINET PLAN-KC-3214**  
 GOURMET ISLAND SCALE: 3/8" = 1'-0" A-12



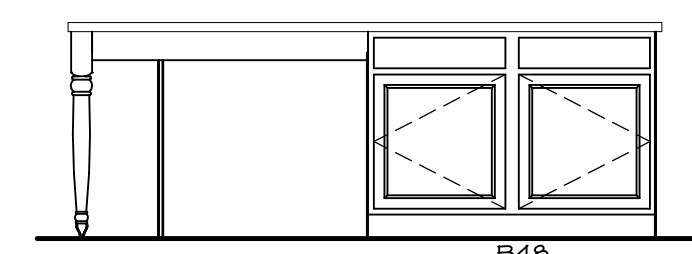
**KITCHEN COUNTERTOP PLAN-KT-3214**  
 GOURMET ISLAND SCALE: 3/8" = 1'-0" A-12



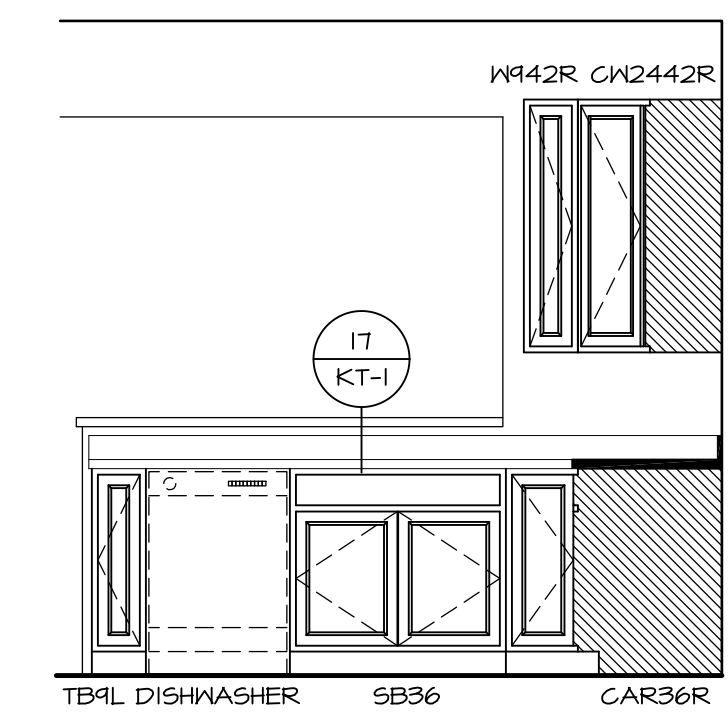
**KITCHEN ELEVATION H**  
 SCALE: 3/8" = 1'-0"



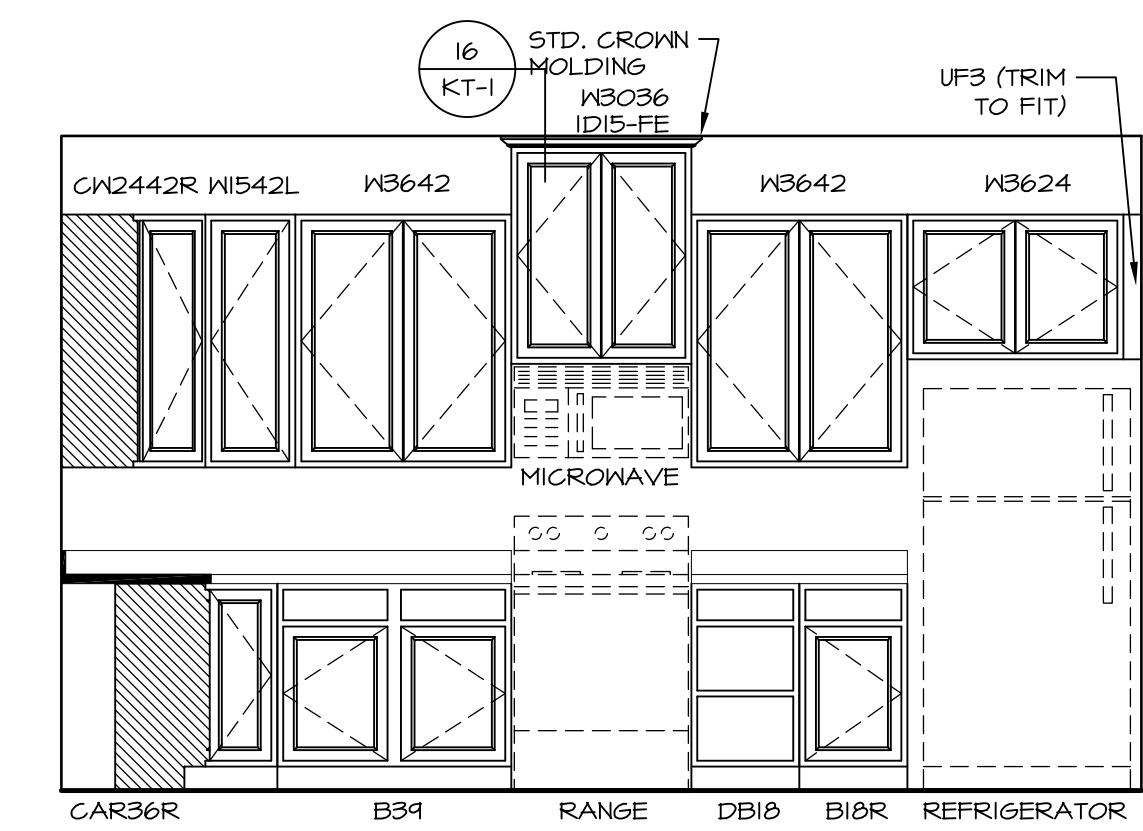
**KITCHEN ELEVATION G**  
 SCALE: 3/8" = 1'-0"



**KITCHEN ELEVATION F**  
 SCALE: 3/8" = 1'-0"



**KITCHEN ELEVATION C**  
 SCALE: 3/8" = 1'-0"

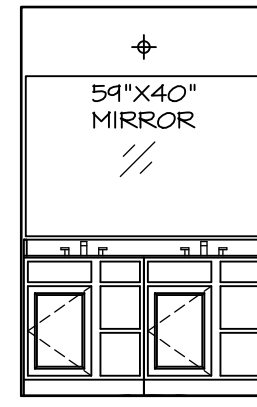


**KITCHEN ELEVATION A**  
 SCALE: 3/8" = 1'-0"

SHEET NO. <b>A-12</b>	MODEL <b>PALERMO</b>	SET NO. <b>PALOO</b>	REVISIONS	REV. NO.	DATE	REMARKS
	DRAWING TITLE	VERSION <b>03</b>	DRAWN BY			
OPTION	DESCRIPTION	DATE:	OPTION			
<b>70</b>						

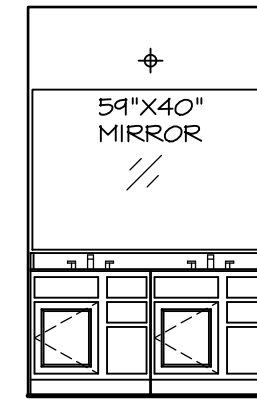
**NVR**  
 NVR, Inc.  
 Architectural Services  
 Architects  
 5285 Westover Hills  
 Frederick, MD 21703

NVR, Inc., owner, expressly reserves its copyright in these plans. These plans are not to be reproduced, changed, copied in any way, or used for any purpose not intended by NVR, Inc. without the written consent of NVR, Inc.



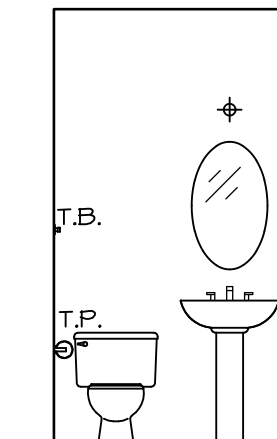
(2) V5DB3034H

**J** OWNER'S BATH  
SCALE: 1/4" = 1'-0"

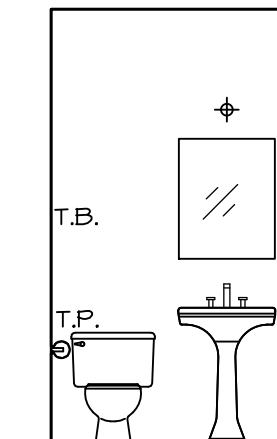


(2) V5DB30

**E** BATH #1  
SCALE: 1/4" = 1'-0"

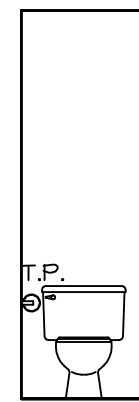


PEDESTAL SINK WITH OVAL MIRROR \*5ZB\*

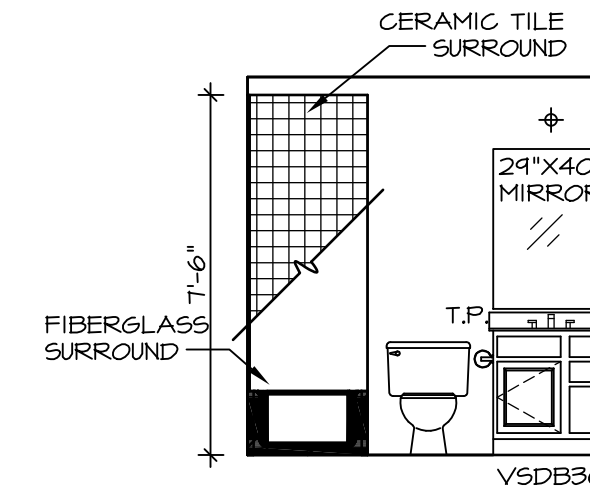


PEDESTAL SINK WITH SQUARE MIRROR \*5ZC\*

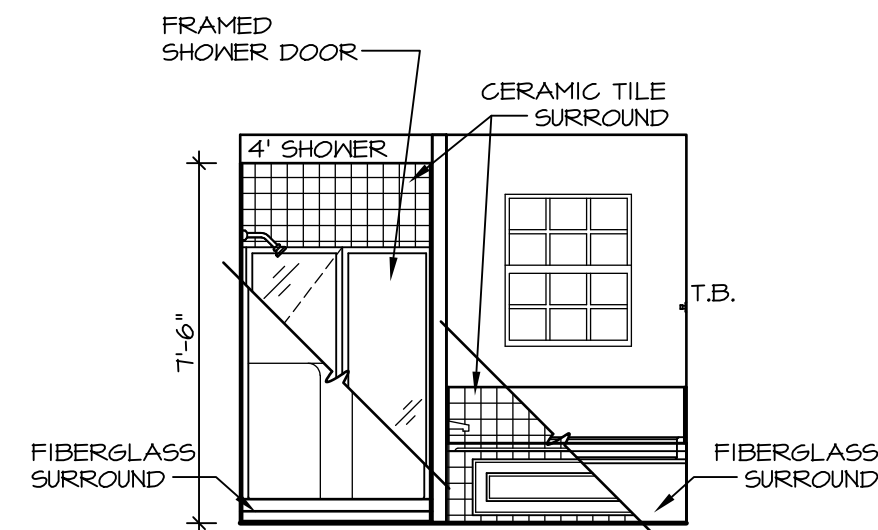
**B** POWDER ROOM  
SCALE: 1/4" = 1'-0"



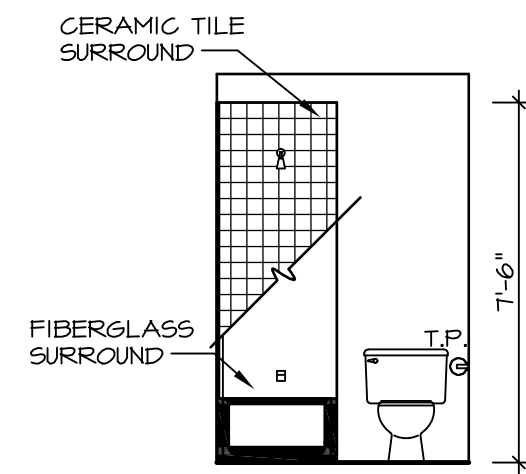
**H** OWNER'S BATH  
SCALE: 1/4" = 1'-0"



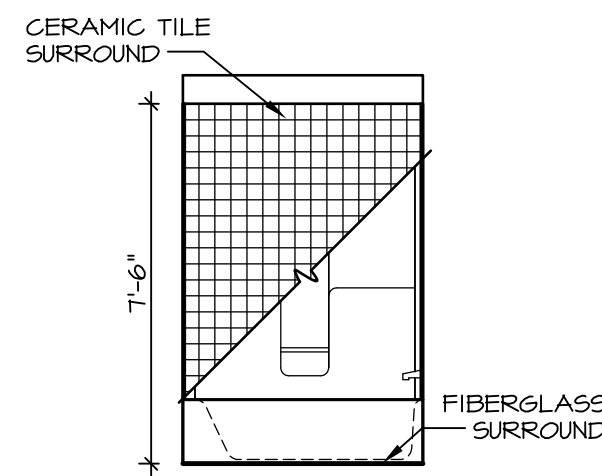
**A** BASEMENT BATH  
SCALE: 1/4" = 1'-0"



**L** OWNER'S BATH  
SCALE: 1/4" = 1'-0"



**G** BATH #1  
SCALE: 1/4" = 1'-0"



**F** BATH #1  
SCALE: 1/4" = 1'-0"

**NOTES:**

1. TEMPERED GLASS SHOWER ENCLOSURE WITH SWING DOOR OR OPTIONAL SLIDING DOOR BY DIVISION
2. TUB ACCESS PANELS PROVIDED AS NEEDED, ALL MATERIALS BY DIVISION
3. REFER TO SHEET IT-2 FOR TUB AND SHOWER DETAILS.
4. ALL V5DB24-42 DRAWERS TO BE SET ON RIGHT HAND.
5. BATH ELEVATIONS ARE SHOWN PER PLAN.

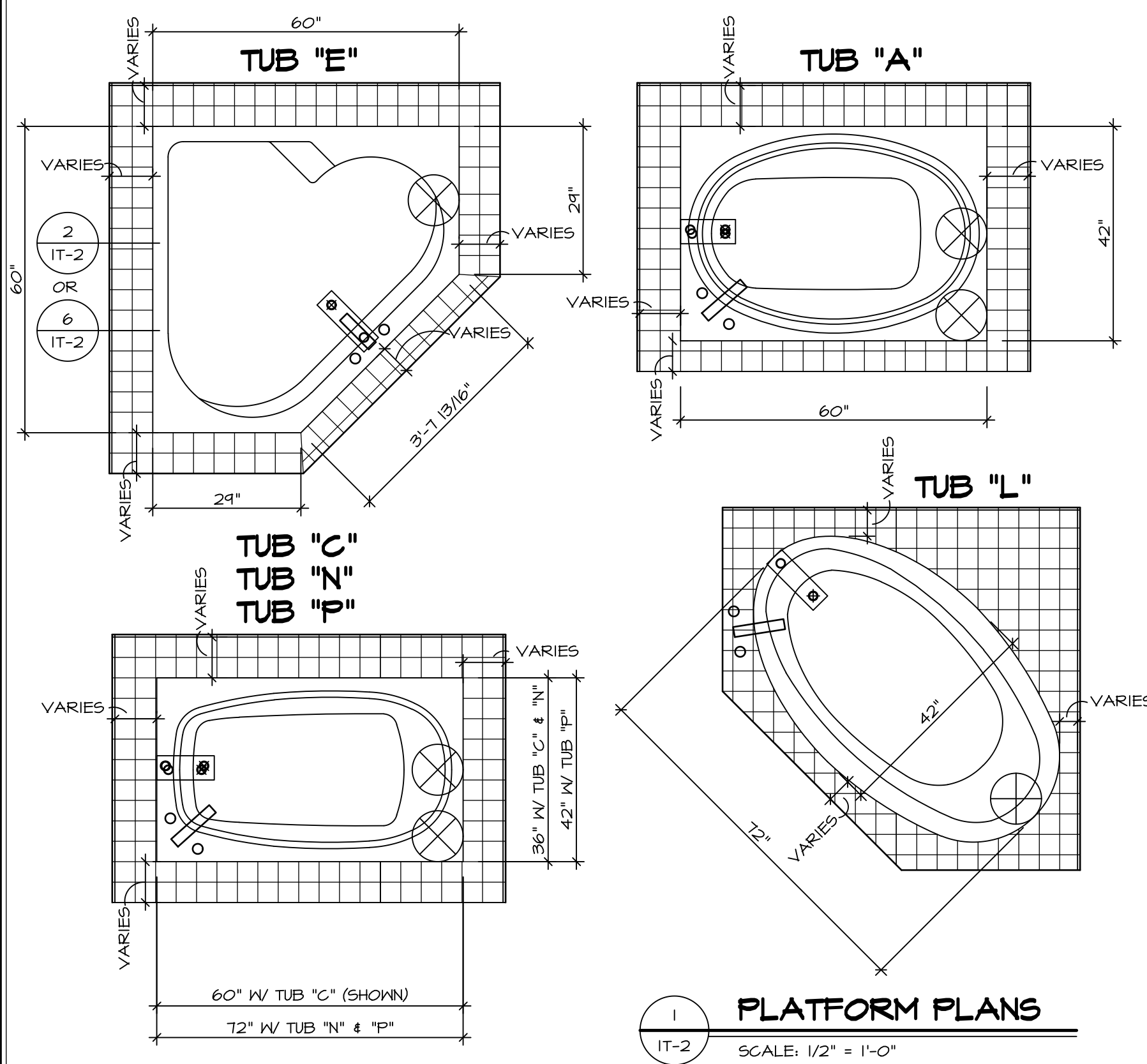
REV. NO.	DATE	REMARKS
1	08/04/18	DM - DRAWING ALIGNMENT

NVR, Inc., owner, expressly reserves its copyright in these plans. These plans are not to be reproduced, changed, adapted, or otherwise used in any way without the written consent of NVR, Inc.

**NVR**  
NVR, Inc.  
Architectural Services  
Architects  
5285 Westover Hills  
Frederick, MD 21703

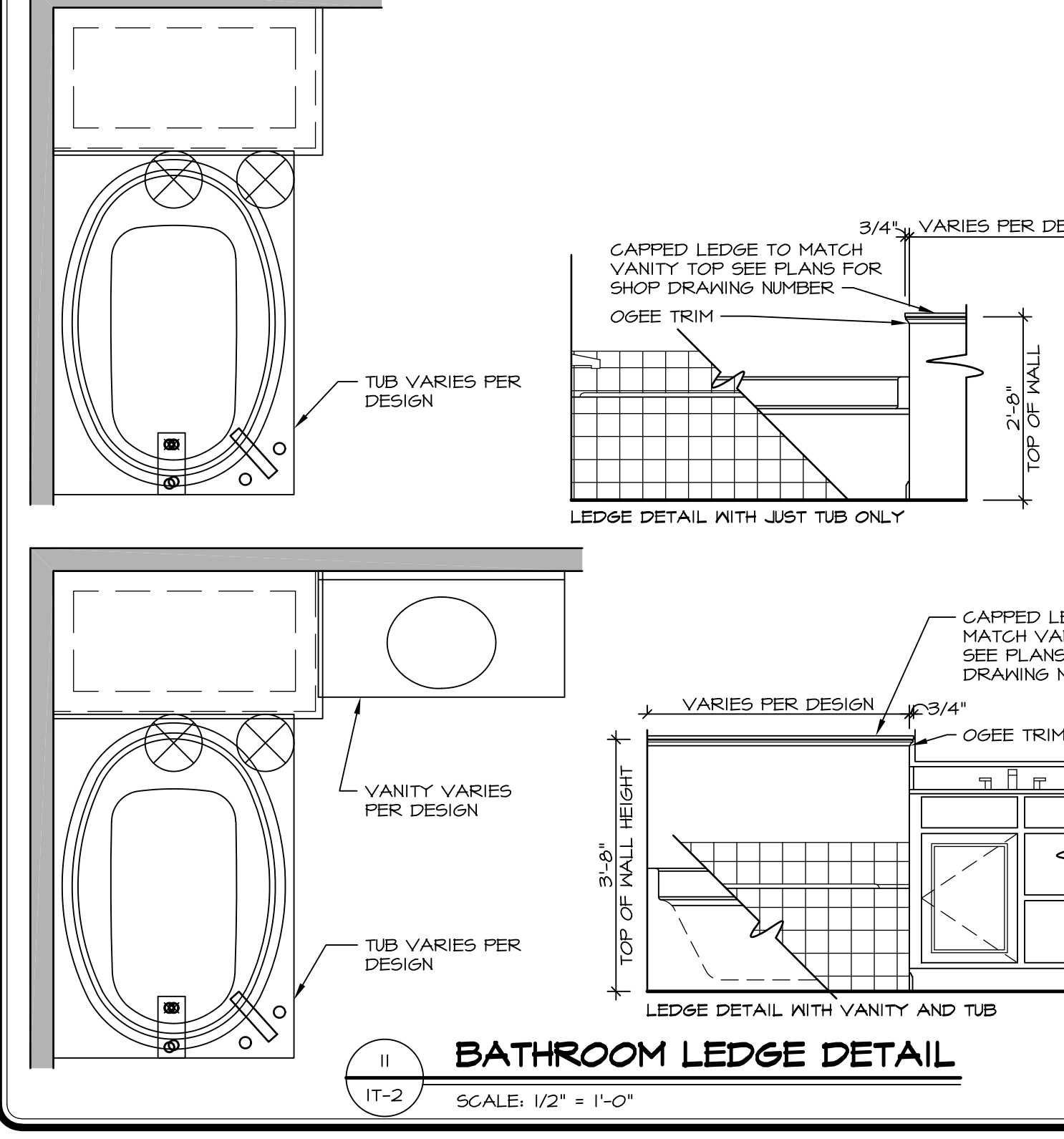
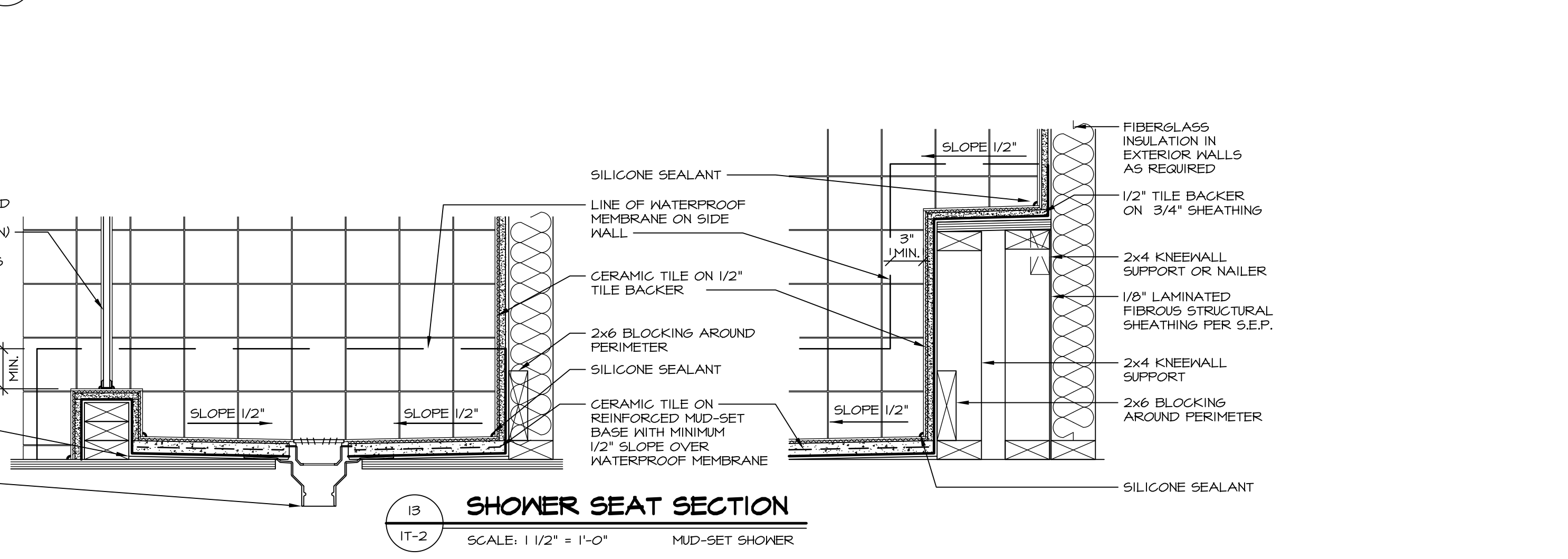
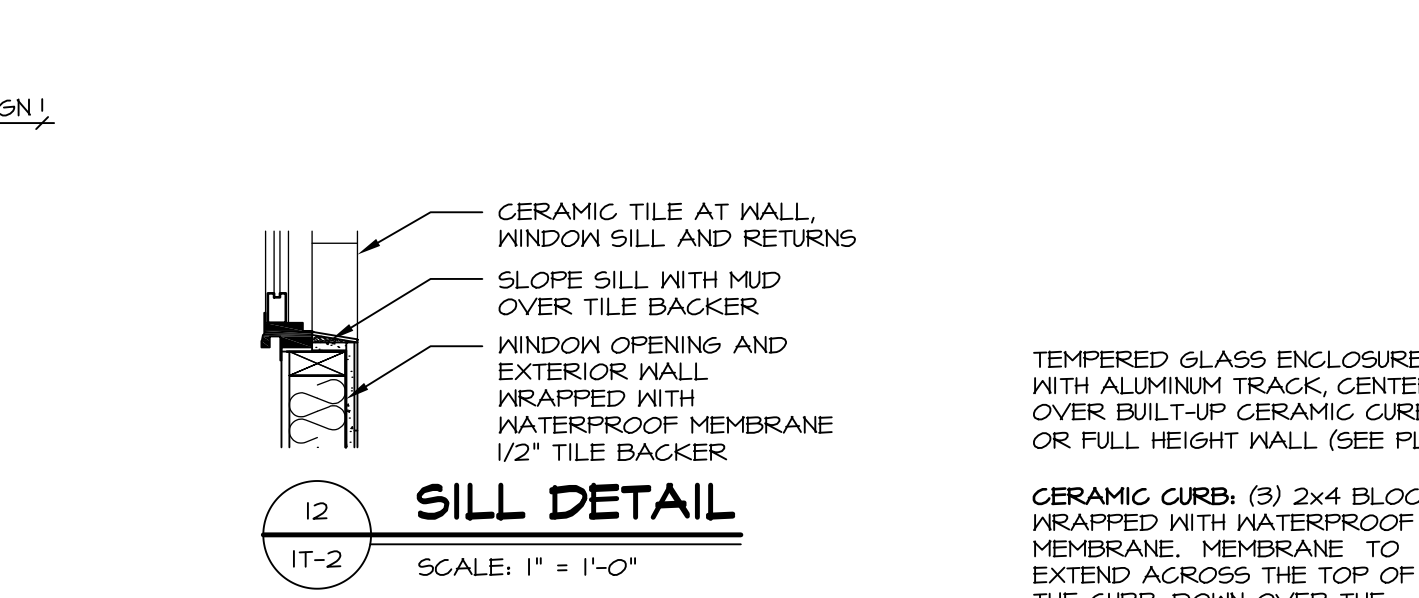
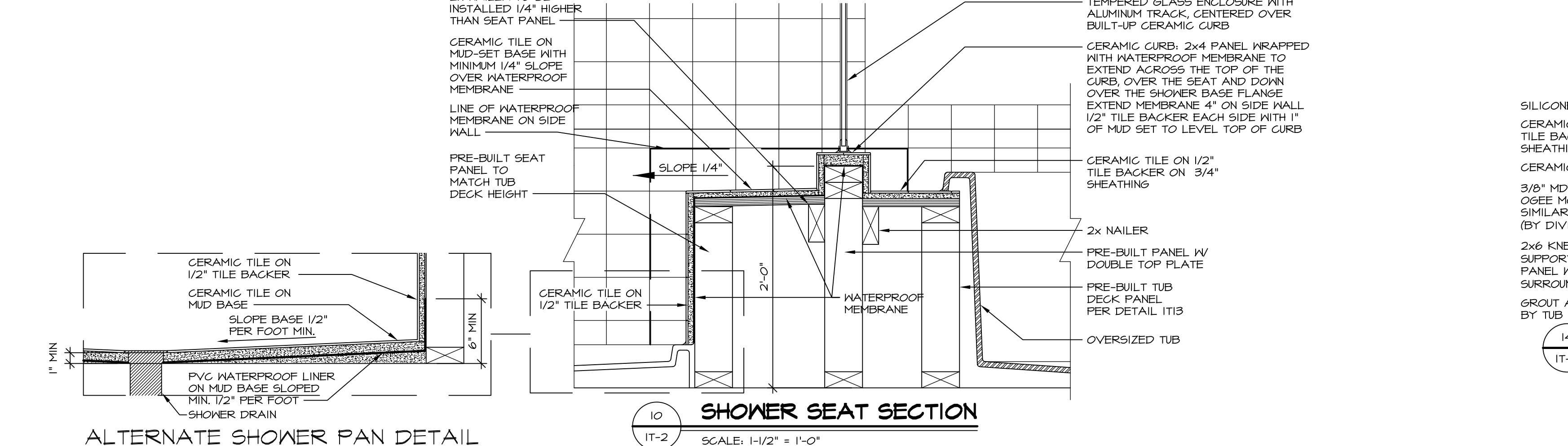
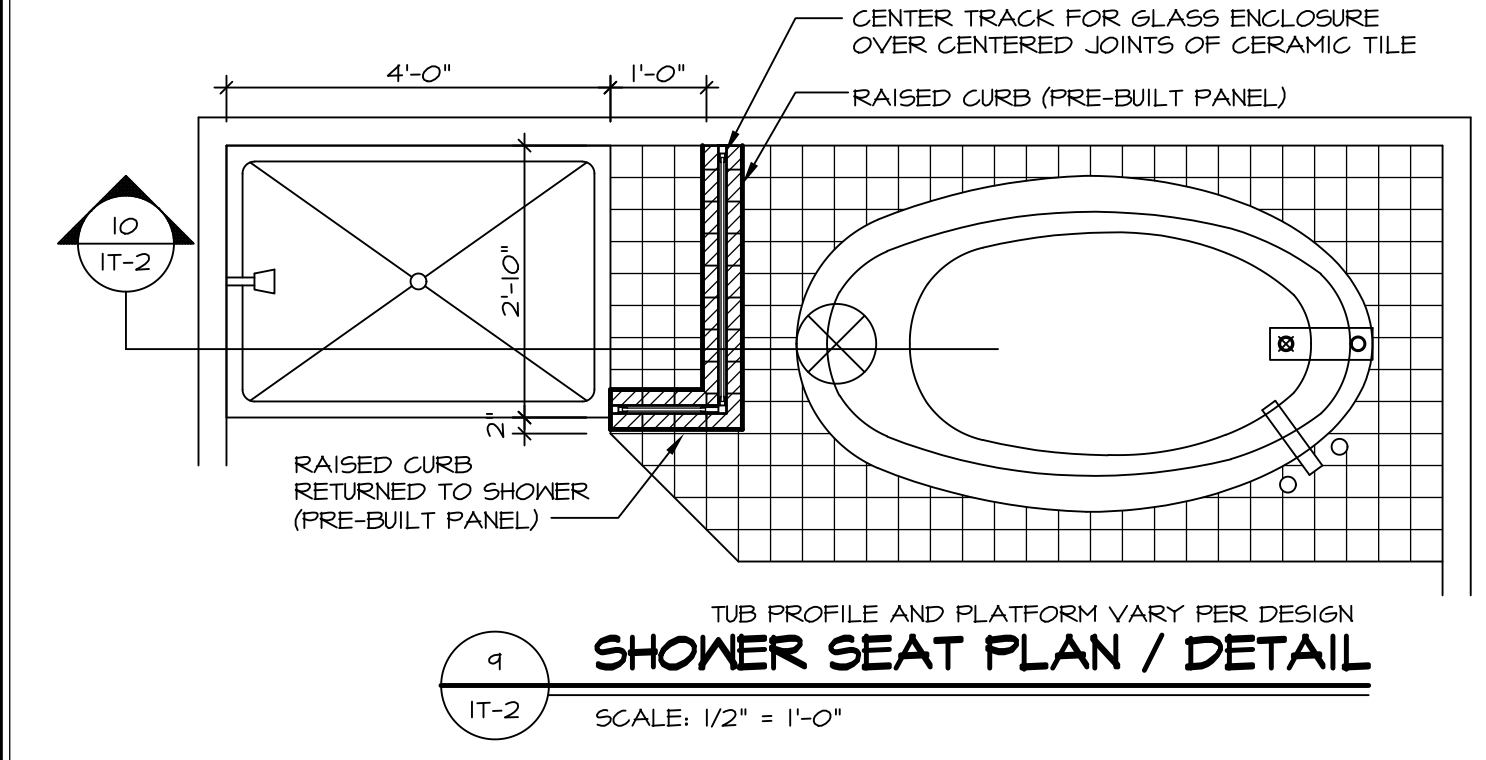
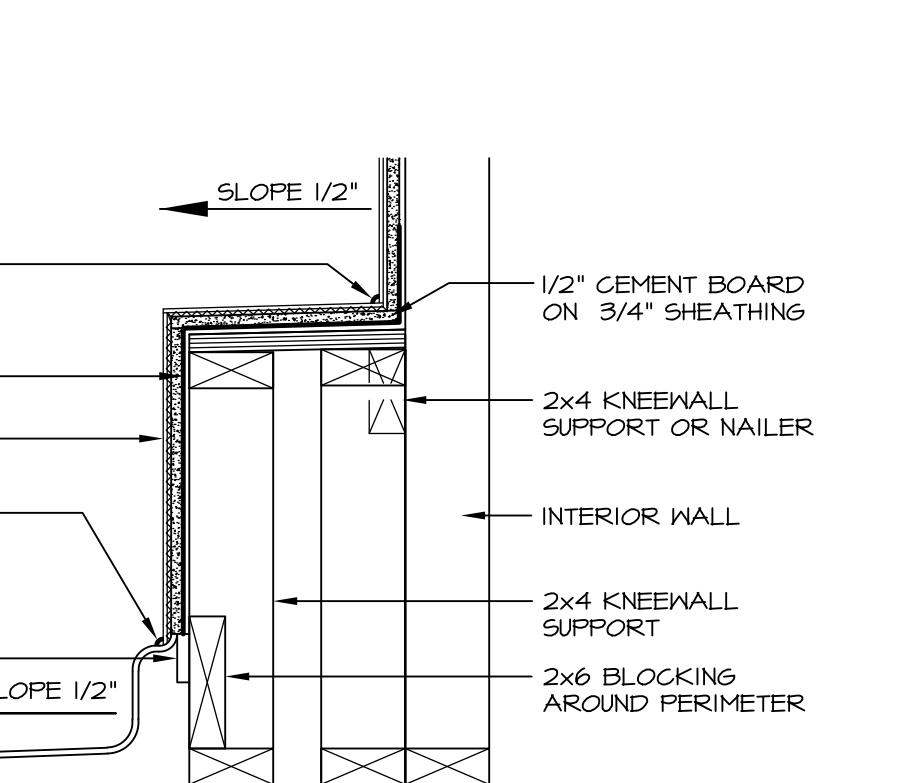
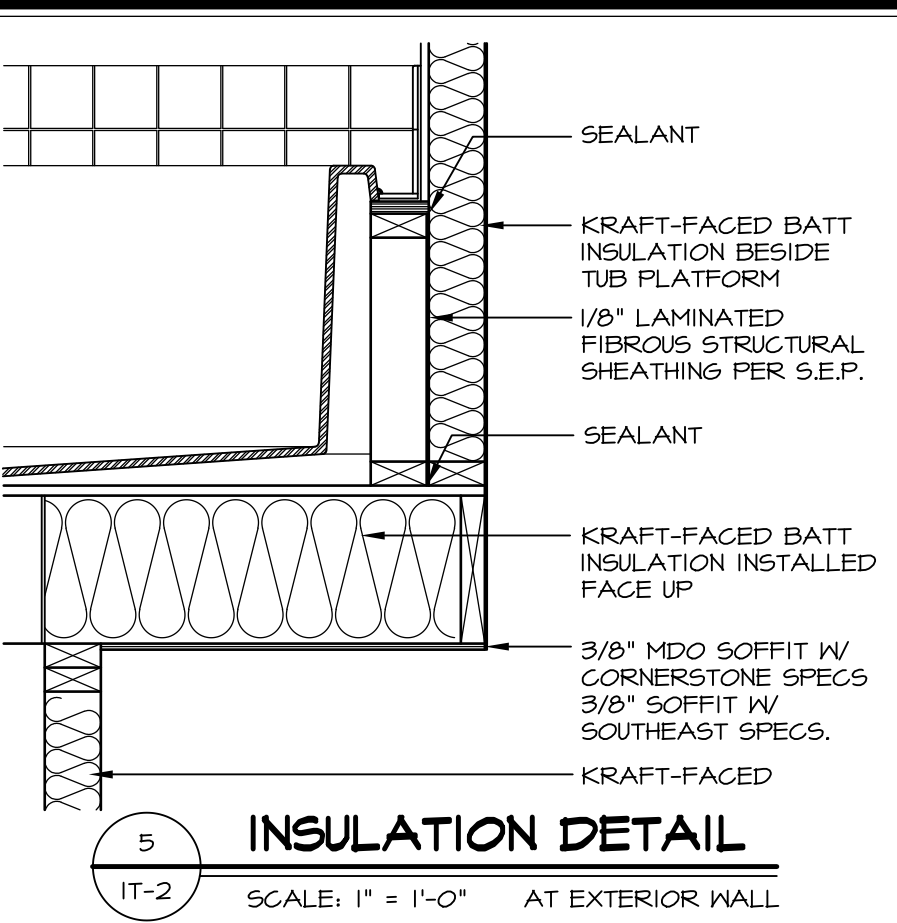
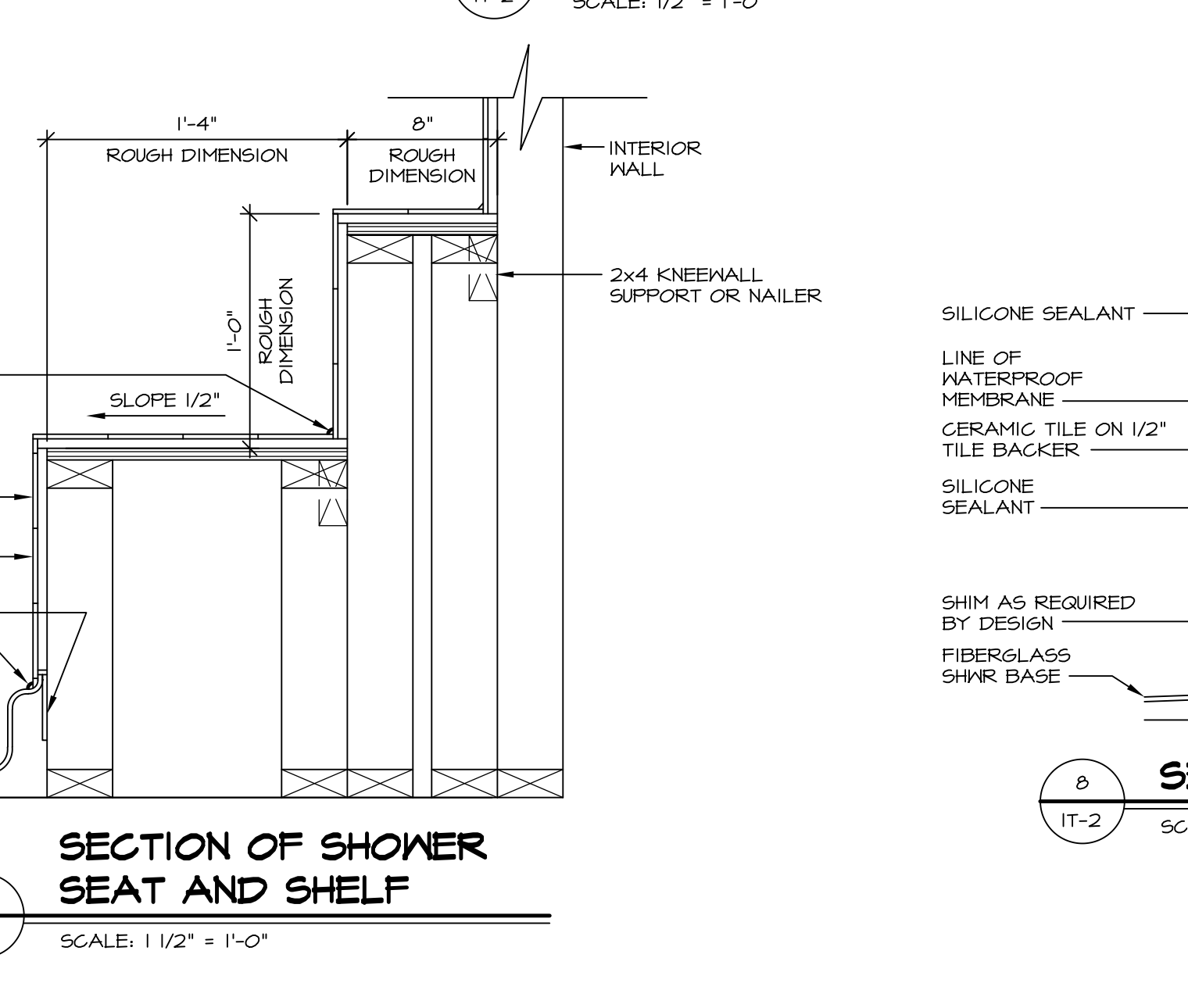
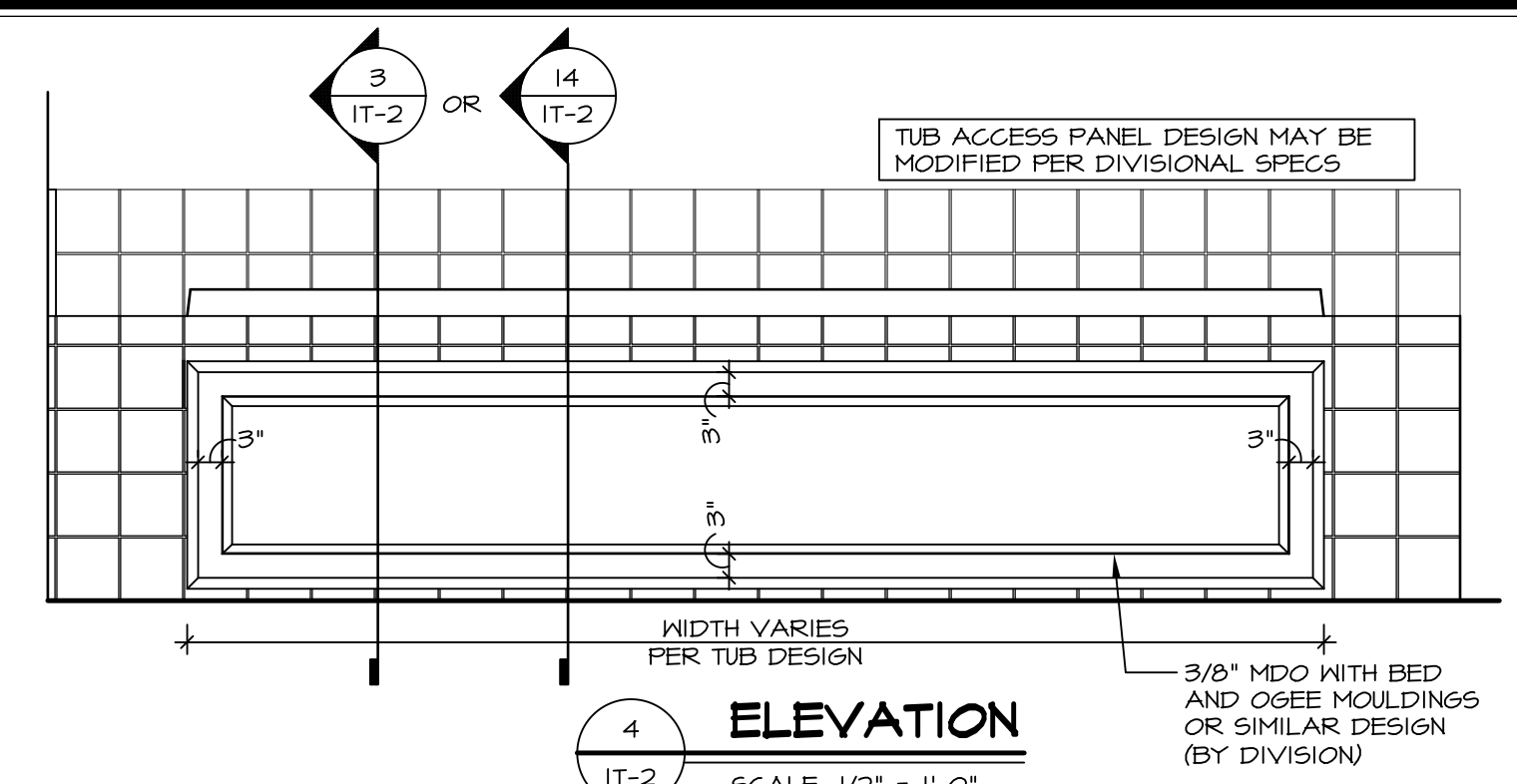
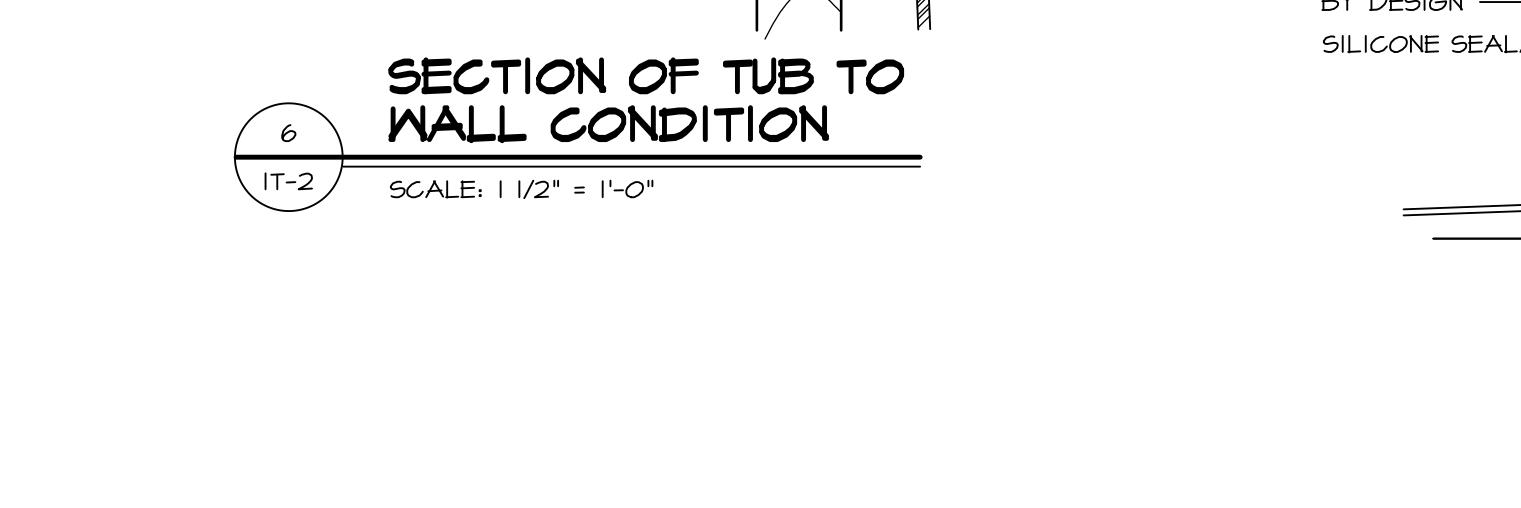
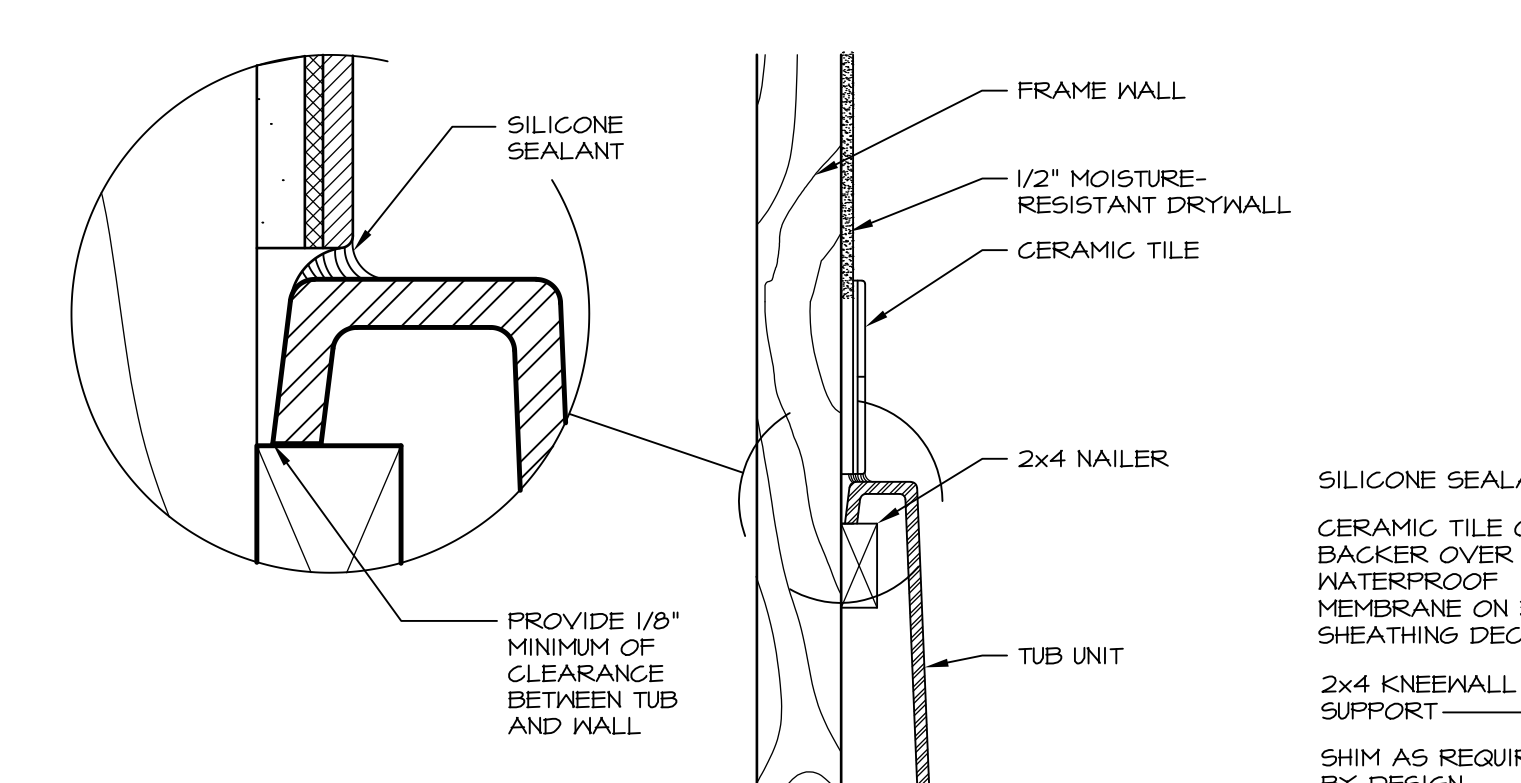
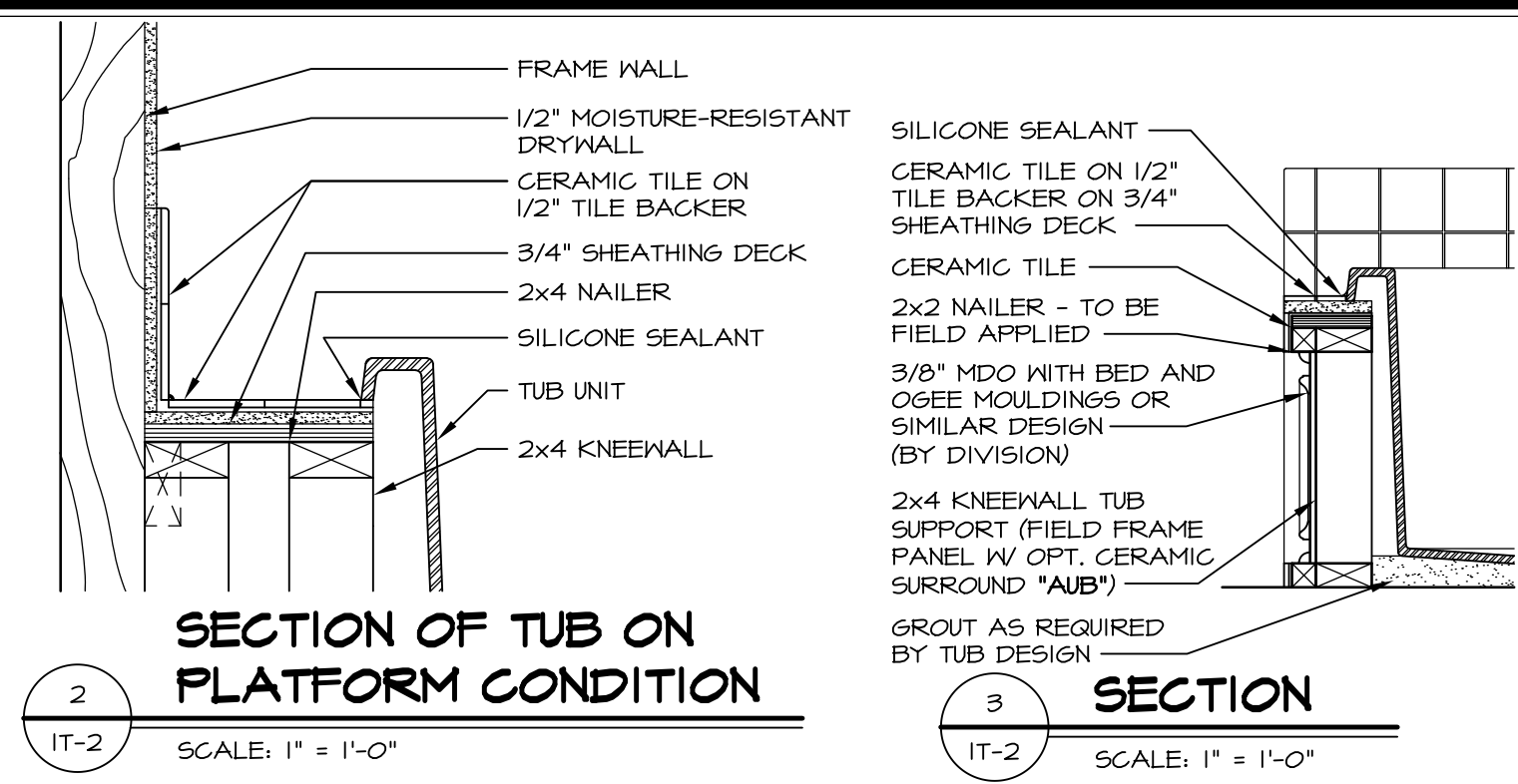
SET NO.	PALOO
VERSION	03
DRAWN BY	
DATE:	
OPTION	

SHEET NO.	<b>A-13</b>
MODEL	<b>PALERMO</b>
DRAWING TITLE	BATH ELEVATIONS
OPTION DESCRIPTION	
72	



**1 PLATFORM PLANS**  
SCALE: 1/2" = 1'-0"

TUB	MANUF.	HEIGHT	WIDTH	LENGTH	TUB DECK PANEL HEIGHT
"A"	KOHLER/ STERLING	18 3/4"	42"	60"	17 1/8"
"C"	KOHLER/ STERLING	18 3/4"	36"	60"	17 1/8"
"E"	KOHLER/ STERLING	19 1/2"	60"	60"	17 7/8"
"L"	KOHLER/ STERLING	18 1/2"	42"	72"	16 7/8"
"N"	KOHLER/ STERLING	18 3/4"	36"	72"	17 1/8"
"P"	KOHLER/ STERLING	18 3/4"	42"	72"	17 1/8"



REMARKS

REV. NO. DATE

1 5/1/17 EBP - REVISED DETAIL 1 AND 11 TO REMOVE TUB ACCESS PANEL REF. (095 #15 5414)

2 9/2/17 EBP - REVISED T-FLY NOTE TO CALL OUT LFS

3 9/2/17 EBP - REVISED NOTE ON DETAIL #1 - REVISED ORDER OF MATERIAL PARA#6934

SET NO. NVR

VERSION

DRAWN BY

DATE:

OPTION

MODEL STANDARD DETAILS

DRAWING TITLE INTERIOR TRIM DETAILS

BATH DETAILS

OPTION DESCRIPTION

SHEET NO. IT-2

J:\Dwg\NVR\Interior Trim\IT2.dwg 09/27/17 - 9:20 am

NVR, Inc. Architectural Services 100 5285 Washburn Ave. Suite 100 Frederick, MD 21703