

**FOUNDATION PLAN**  
SCALE: 1/4" = 1'-0"

**LEGEND**

- BEARING WALL
- NON BEARING WALL
- INDICATES BEARING FROM POINT-LOAD ABOVE
- JACKS
- BEAM/HEADER
- PAD FOOTING
- STEEL COLUMN
- PORTAL FRAME
- JOIST/TRUSS
- LVL
- ENGINEERING PAGE NUMBER

SEE FC DETAILS FOR FRAMING CONNECTORS

- FOUNDATION NOTES - BASEMENT**
- FOUNDATION UNDER HABITABLE SPACE.
  - CONCRETE SLAB ON 6 MIL VAPOR BARRIER OVER SUB-BASE (SEE SPEC SHEET FOR SLAB NOTES)
  - SLAB UNDER GARAGE.
  - UNEXCAVATED WITH CONCRETE SLAB ON VAPOR BARRIER OVER SUB-BASE (SEE SPEC SHEET FOR SLAB NOTES)
  - SEE SHEET (A-4) FOR FOUNDATION CONNECTION INFORMATION.
  - OPTIONAL EGRESS WINDOW - LOCATION MAY VARY DUE TO GRADE OR OPTIONS ABOVE WINDOW WELL REQUIRED W/ CERTAIN GRADE CONDITIONS (SEE SPEC SHEET FOR ADDITIONAL INFO.)
  - SLAB LEDGE LOCATIONS VARY W/ GRADE BEAM(S) ORIENTATION. SEE 6B-1 FOR DETAILS.

**FOUNDATION DIAGONALS**

	A	B
A	0"	50'-5 21/32"
B	50'-5 21/32"	0"
C	48'-0"	74'-3 31/32"
D	50'-0"	65'-8 13/16"
E	54'-4 13/16"	52'-5 31/32"
F	65'-11 3/8"	50'-0"
G	30'-4 21/32"	20'-0"

**FOUNDATION BEAM/HEADER SCHEDULE**

IDENTIFIER	DESCRIPTION	LENGTH	OPTIONS	ENS. NUM.	REMARKS
B01	BEAM STEEL - #BX10	23'-4"		BO22	
B02	BEAM STEEL - #BX18	30'-1 3/4"		BO25	
B03	BEAM STEEL - #BX13	13'-4"		BO28	
B04	BEAM STEEL - #BX13	15'-10 3/4"	BVV, MAV	BO32	

**PAD FOOTING SCHEDULE**

IDENTIFIER	LENGTH	WIDTH	HEIGHT	OPTIONS	ENS. NUM.
FO1	2'-3"	2'-3"	1'-0"		BO23
FO2	3'-0"	3'-0"	1'-3"		BO26
FO3	2'-0"	2'-0"	1'-0"		BO26
FO4	2'-0"	2'-0"	1'-0"		BO33
FO5	3'-6"	3'-6"	1'-6"	BVV, MAV	BO33
F20	11'-3 3/4"	1'-4"	0'-8"		BO23

**STEEL COLUMN SCHEDULE**

IDENTIFIER	STYLE	HEIGHT	OPTIONS	ENS. NUM.	REMARKS
C01	STANCHION - 3 IN DIA 116A ADJ	7'-5 3/8"		BO23	
C02	STANCHION - 4 IN DIA 116A ADJ	7'-5 3/8"		BO26	
C03	STANCHION - 3 IN DIA 116A ADJ	7'-5 3/8"		BO26	
C04	STANCHION - 3 IN DIA 116A ADJ	7'-5 3/8"		BO33	
C05	STANCHION - 3 IN SCHED 40	7'-5 3/8"	BVV, MAV	BO33	

REVISIONS

REV. NO.	DATE	DESCRIPTION
1	05/04/16	N-DRAWING ALIGNMENT

REMARKS

NVR, Inc., owner, expressly reserves its common law copyright and other property rights in these plans. These plans are not to be altered, reproduced, or used in any way without the written consent of NVR, Inc.

**NVR**  
NVR, Inc.  
Architectural Services  
Architects  
5285 Westchase Lane, Suite 100  
Frederick, MD 21703

SET NO. CNP00  
VERSION 02  
DRAWN BY HT  
DATE: 6/10/16  
OPTION

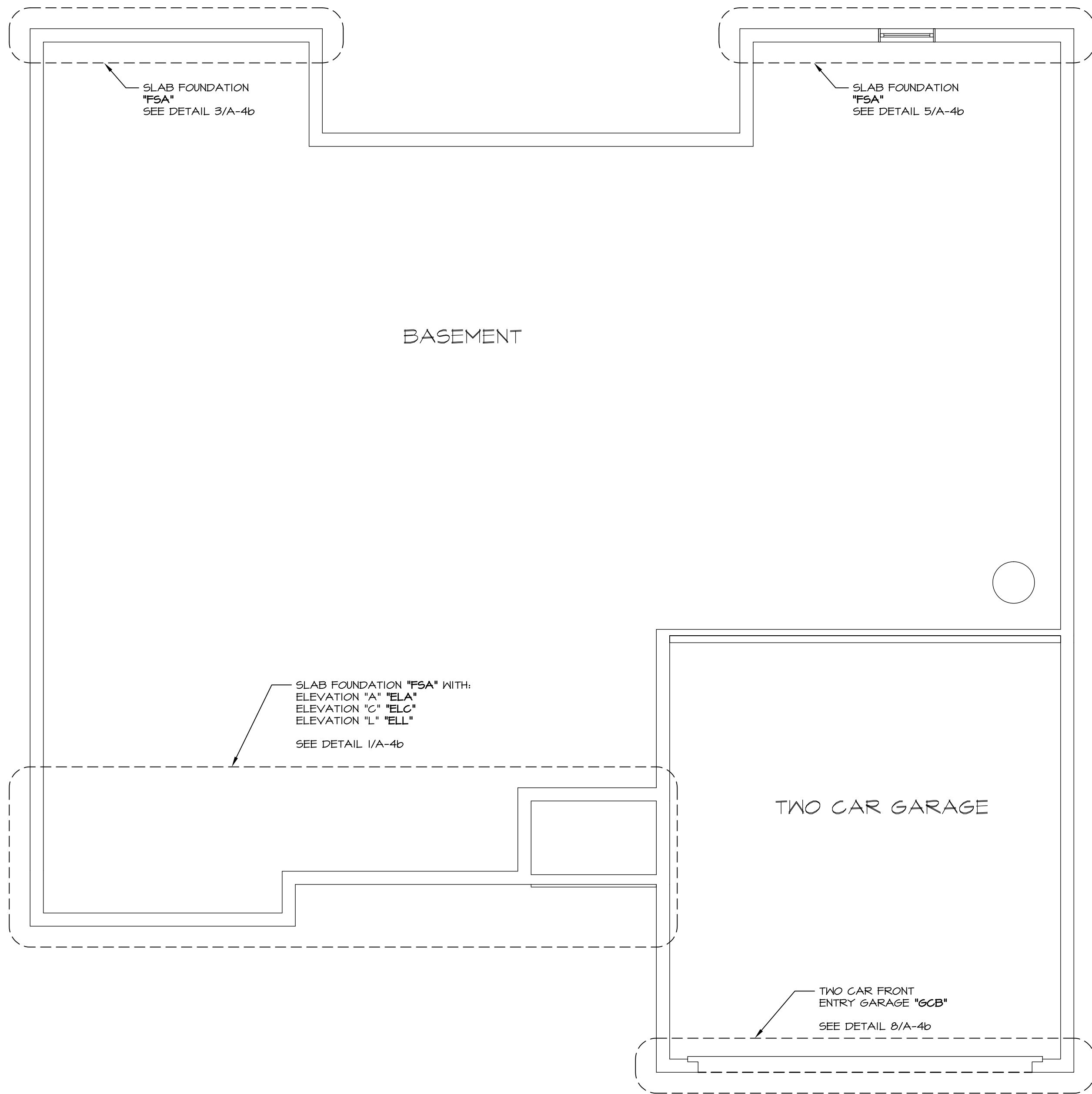
**CAROLINA PLACE**  
DRAWING TITLE  
FOUNDATION PLAN

OPTION DESCRIPTION

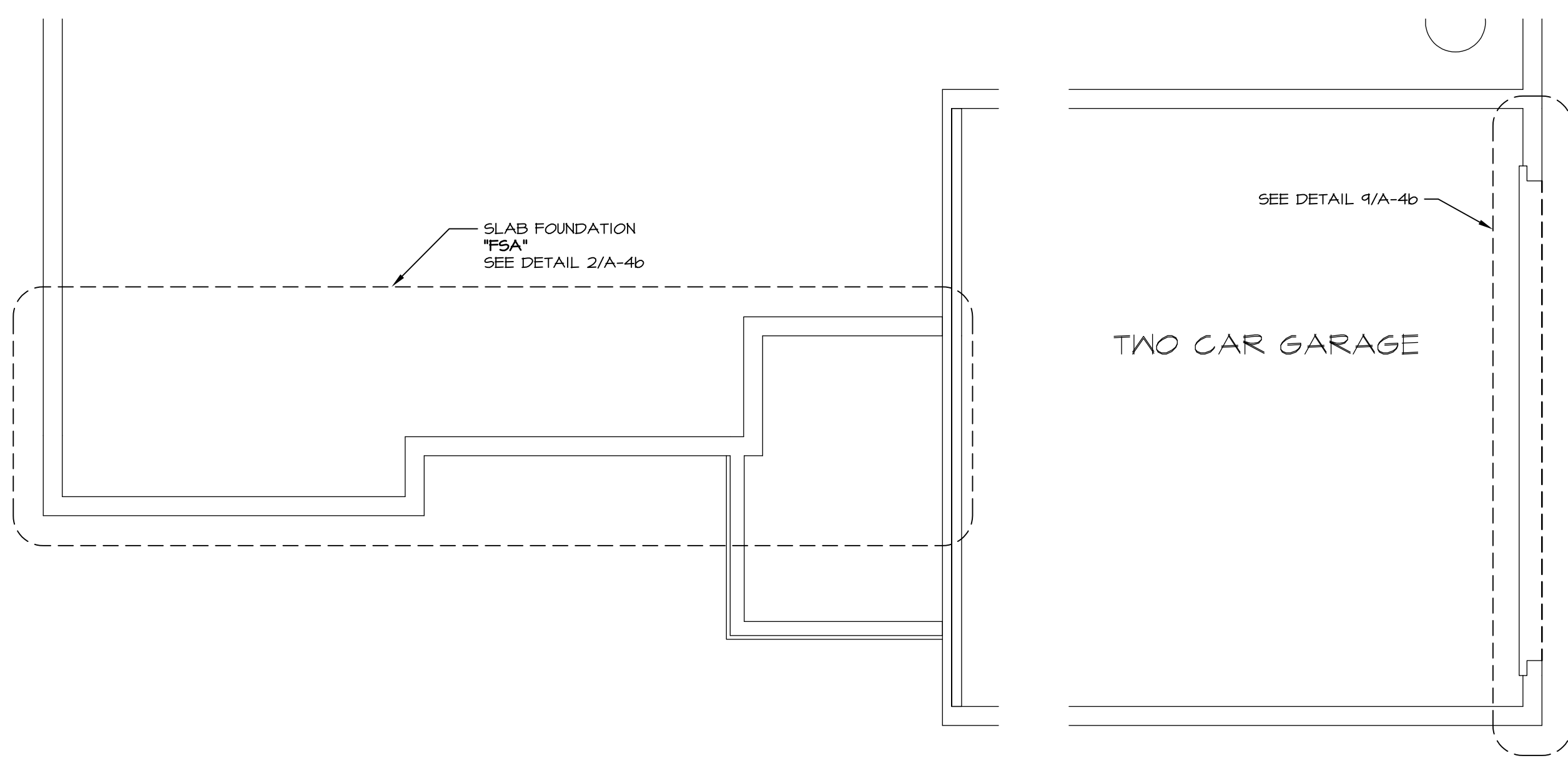
SHEET NO. **A-3**

18

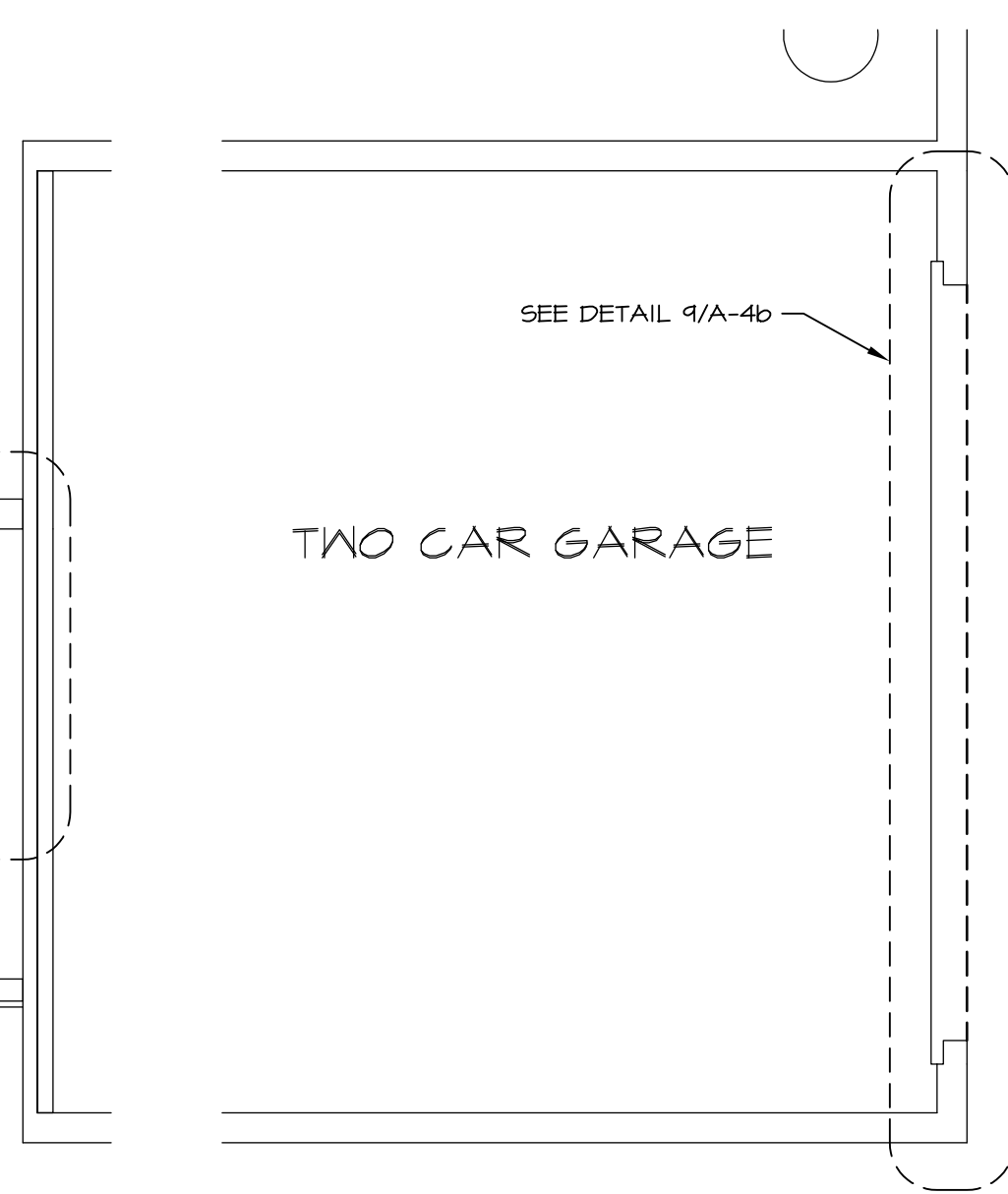
C:\NVR\Solves\CAROLINA\_PLACE\_CNP00\_02\DCI-16-K421\564856\Sheets\18\_A-3\_FDN\_LS (FBA).dwg 03/08/17 - 11:37 PM



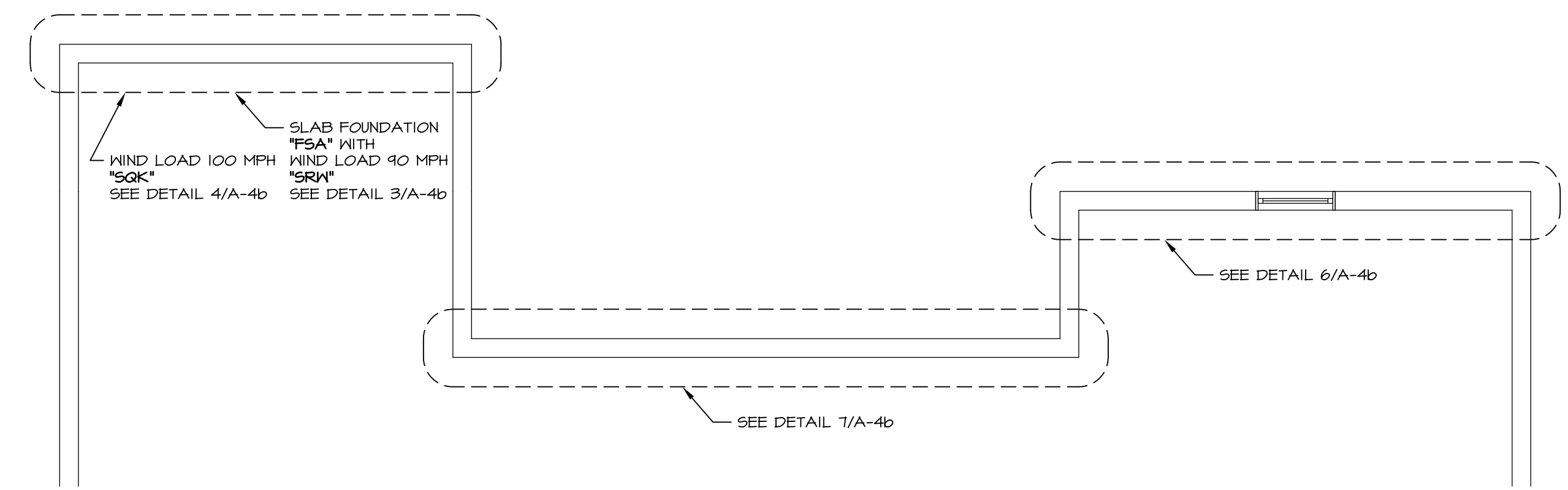
**A FOUNDATION HOLD DOWN DETAIL**  
SCALE: 1/4" = 1'-0"



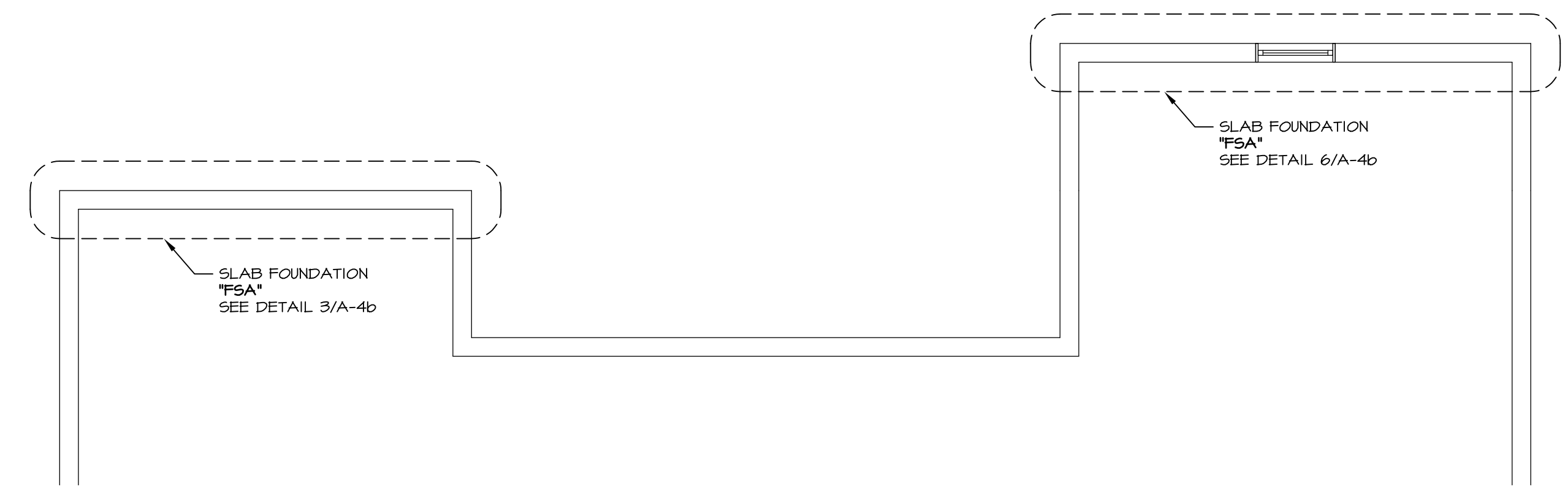
**B FOUNDATION HOLD DOWN DETAIL**  
SCALE: 1/4" = 1'-0"  
ELEVATION "B" "ELB"  
ELEVATION "C" "ELC"



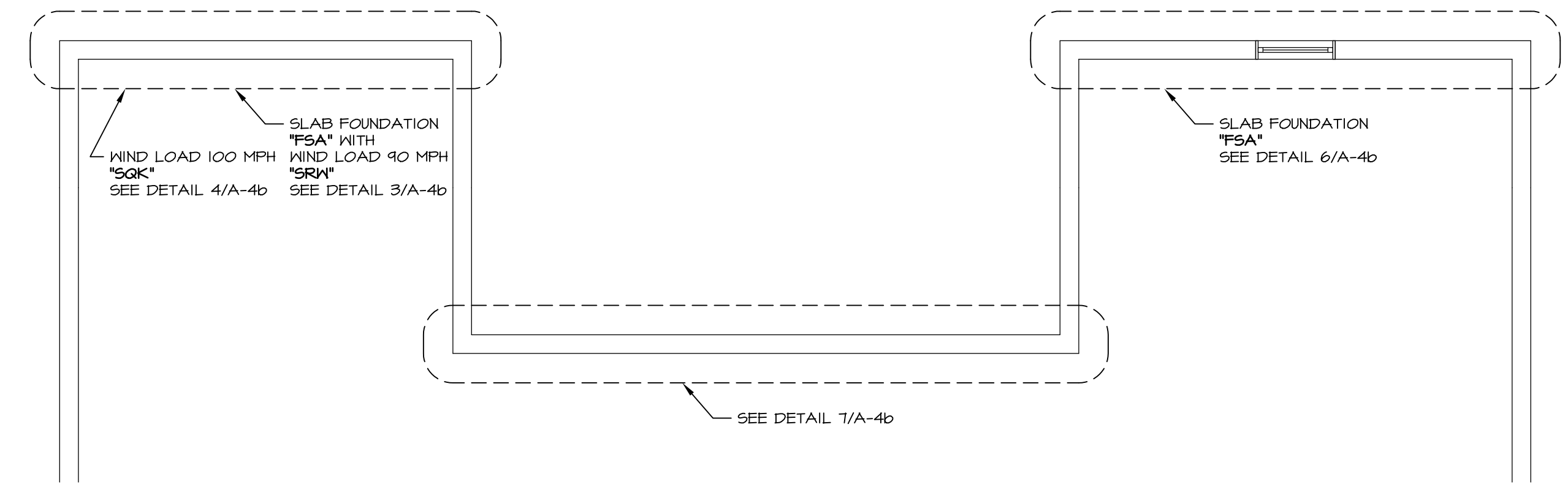
**C FOUNDATION HOLD DOWN DETAIL**  
SCALE: 1/4" = 1'-0"  
TWO CAR SIDE ENTRY GARAGE "GCB"



**D FOUNDATION HOLD DOWN DETAIL**  
SCALE: 1/4" = 1'-0"  
MORNING ROOM "MAA"



**E FOUNDATION HOLD DOWN DETAIL**  
SCALE: 1/4" = 1'-0"  
EXTENDED OWNER'S SUITE "EGY"



**F FOUNDATION HOLD DOWN DETAIL**  
SCALE: 1/4" = 1'-0"  
EXTENDED OWNER'S SUITE "EGY"  
MORNING ROOM "MAA"

**HOLD DOWN NOTES**

REFER TO DETAIL (4/FD-1) FOR HOLD DOWN OFFSET DIMENSIONS.  
REFER TO DETAIL (12/FD-1) FOR HOLD DOWNS ON CMU BLOCK.

STRAP	1. STRAP: a. ON FOUNDATION USE (5THD14) b. ON FLOOR SYSTEM USE (5THD14R.J) 2. ALL OTHER HOLD DOWN SEE DETAIL (WB-1, 2) FOR MORE INFORMATION. 3. STRAP LOCATION ON PLANS SHOWN BY SOLID DIMENSION TO CENTER OF STUDS
OR	
BOLT	1. 5/8" THREADED ROD 2. ALL OTHER HOLD DOWN SEE DETAIL (WB-1, 2) FOR MORE INFORMATION. 3. BOLT LOCATION ON PLANS SHOWN BY DASHED DIMENSION TO CENTER OF BOLT
	4. ALL HARDY PANELS USE (1/8" DIAMETER THREADED ROD) 5. SEE DETAIL (WB-3) FOR MORE HARDY PANEL INFORMATION. 6. HARDY PANEL LOCATION ON PLANS SHOWN BY DIMENSIONS TO CENTER OF HARDY PANEL TEMPLATE.

REV. NO.	DATE	REMARKS
1	8/5/16	TN - DRAWING ALIGNMENT
2	10/27/16	TB - STANDARD DETAILS 3.0
3	1/04/17	56A - REVISED EGY OPTION DESCRIPTION TO EXT. OWNER'S SUITE PAR # 43361

NVR, Inc., owner, expressly reserves its common law copyright and other property rights in these plans. These plans are not to be copied, reproduced, or otherwise used in any way without the express written consent of NVR, Inc.

**NVR**  
 NVR, Inc.  
 Architectural Services  
 Architects  
 Suite 100  
 5285 Washington Blvd  
 Frederick, MD 21703

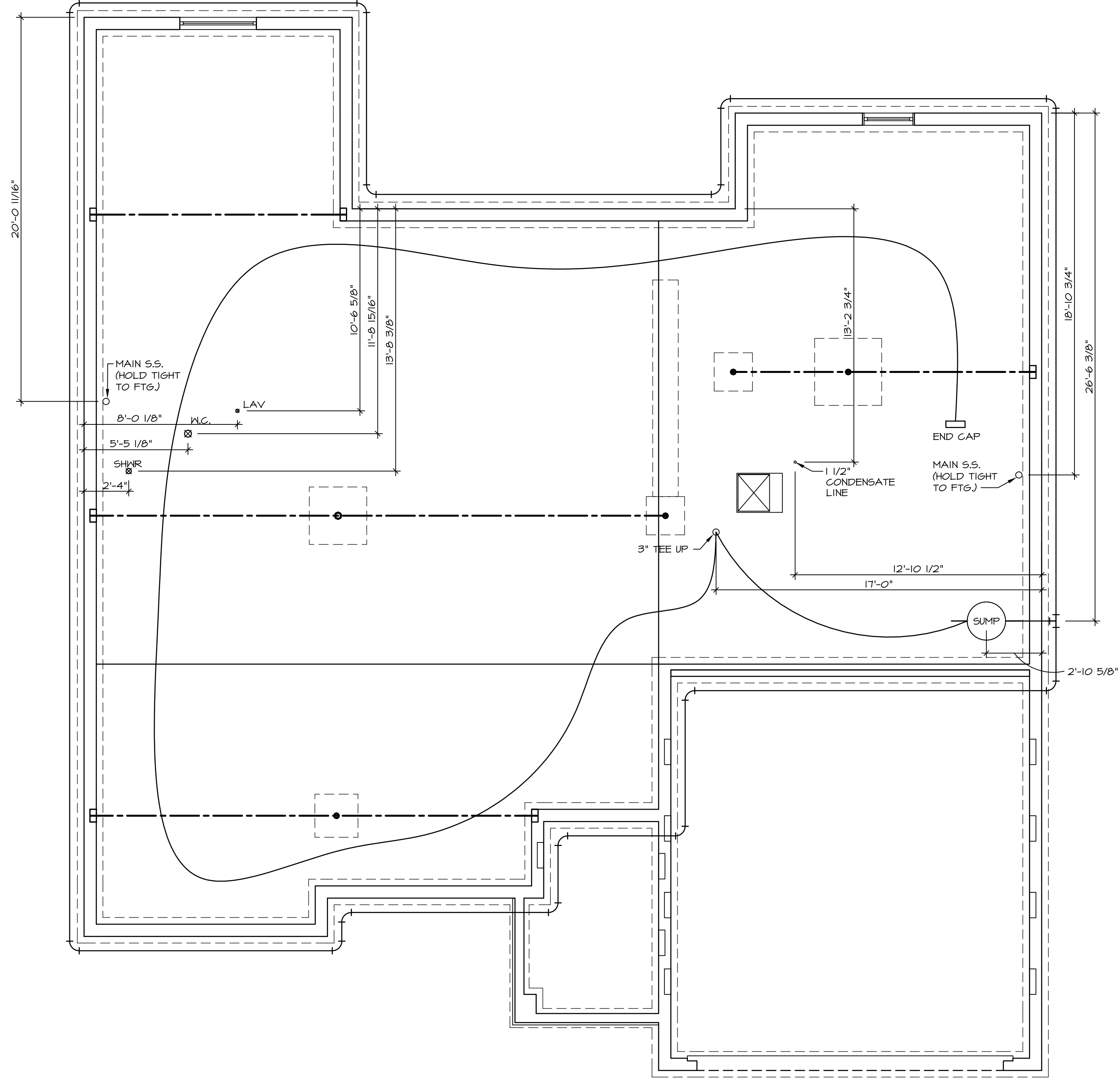
SET NO. CNP00  
 VERSION 02  
 DRAWN BY CEL  
 DATE: 7/19/16  
 OPTION

MODEL  
**CAROLINA PLACE**  
 DRAWING TITLE  
 FOUNDATION HOLD DOWN DETAILS

SHEET NO.  
**A-4**

OPTION DESCRIPTION  
**34**

C:\NVR\Solves\CAROLINA PLACE\_CNP00\_02\DCI-YG-K421\564856A\Sheets\Master\_Sel\Foundation\_Hold\_Downs\34\_A-4\_FDN\_HD.dwg 03/08/17 11:37 pm



1  
A-5  
PLUMBING PLAN  
SCALE: 1/4" = 1'-0"

SHEET NO. <b>A-5</b>	MODEL <b>CAROLINA PLACE</b>	SET NO. <b>CNPOO</b> VERSION <b>02</b> DRAWN BY <b>PLUMBING PLAN</b>	OPTION DESCRIPTION
<b>36</b>		DATE: OPTION	

**NVR**  
NVR, Inc.  
Architectural Services  
5285 Westwood Lane, Suite 100  
Frederick, MD 21703

NVR, Inc., owner, expressly reserves its common law copyright and other property rights in these plans. These plans are not to be reproduced, stored in a retrieval system, or transmitted in any form or by any means, electronic, mechanical, photocopying, recording, or otherwise, without the prior written consent of NVR, Inc.

REV. NO.	DATE	REMARKS

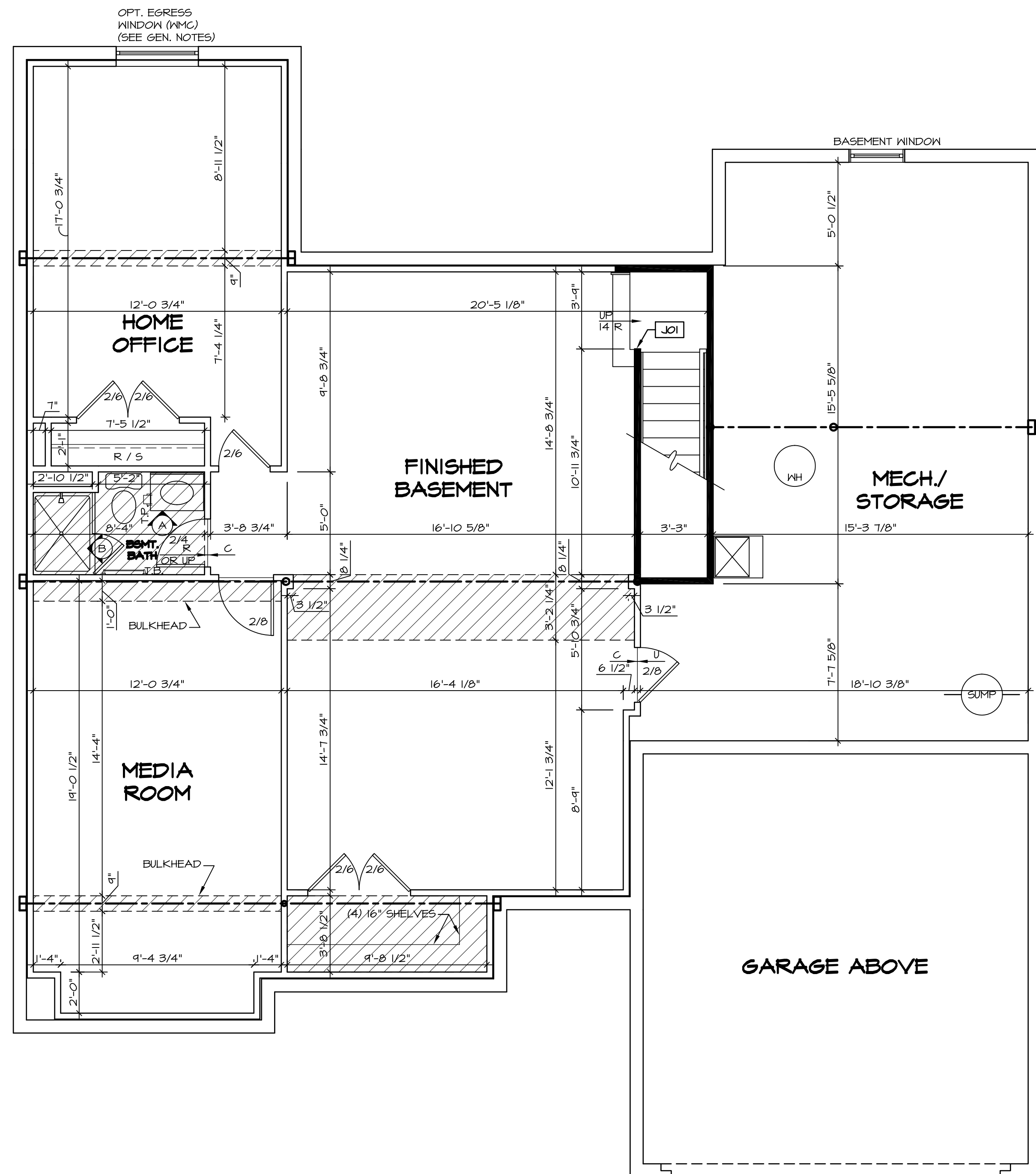
BASEMENT JACK SCHEDULE				
IDENTIFIER	DESCRIPTION	OPTIONS	ENG. NUM.	REMARKS
JO1	JACK - 2x4 SPF STUD GRADE		BO16	

LEGEND	
	BEARING WALL
	NON BEARING WALL
	INDICATES BEARING FROM POINT-LOAD ABOVE
	JACKS
	BEAM/HEADER
	PAD FOOTING
	STEEL COLUMN
	PORTAL FRAME
	JOIST/TRUSS
	LVL
	ENGINEERING PAGE NUMBER

SEE FC DETAILS FOR FRAMING CONNECTORS

- FLOOR PLAN NOTES**
- ALL HEADERS ARE (2) 2x6 w/ 2x4 WALLS OR (3) 2x6 w/ 2x6 WALLS, UNLESS OTHERWISE NOTED.
  - ALL HEADERS TO HAVE (1) 2x4 OR 2x6 JACK EACH END, UNLESS OTHERWISE NOTED.
  - ALL EXTERIOR WALLS TO BE 4" AND ALL INTERIOR WALLS TO BE 3 1/2", UNLESS OTHERWISE NOTED.
  - HATCHED AREAS INDICATE DROPPED CEILINGS. ALL DROPPED CEILINGS ARE 12" UNLESS OTHERWISE NOTED.
  - SEE 'BRACED WALL PANEL DETAIL SHEET' FOR SPECIAL WALL FRAMING LOCATIONS AND HEADER SIZES, IF APPLICABLE.
  - SEE STANDARD DETAIL CATEGORY '1T' SHEET(S) FOR INTERIOR TRIM DETAILS.
  - SEE ARCHITECTURAL DETAIL SHEET 'AD' FOR HOUSE SPECIFIC INTERIOR TRIM OPTION TABLE.
  - ALL WINDOWS HAVE 7'-0 1/2" HEADER HEIGHT UNLESS OTHERWISE NOTED.

- GYPSUM NOTES**
- AT GARAGE:  
GYPSUM BOARD AT COMMON WALLS, CEILING, BEAM WRAPS AND SUPPORTS PER STANDARD DETAIL FA-1(b) FIRE ASSEMBLIES OR AS REQUIRED BY LOCAL CODE.
- AT STAIRS:  
1/2" GYPSUM BOARD AT UNDERSIDE OF STAIRS AND WALLS IN CLOSET



**BASEMENT FLOOR PLAN**  
SCALE: 1/4" = 1'-0"

REV. NO.	DATE	DESCRIPTION	REMARKS
1	08/04/16	N-DRAWING ALIGNMENT	

NVR, Inc., owner, expressly reserves its common law copyright and other property rights in these plans. These plans are not to be altered, reproduced, or used in any way without the express written consent of NVR, Inc.

**NVR**  
NVR, Inc.  
Architectural Services  
Architects  
5285 Westover Hills  
Frederick, MD 21703

SET NO. CNP00	VERSION 02	DRAWN BY	DATE:	OPTION
MODEL: CAROLINA PLACE				
DRAWING TITLE: BASEMENT FLOOR PLAN				
OPTION DESCRIPTION:				

SHEET NO. **A-6** 40

C:\NVR\Solves\CAROLINA\_PLACE\_CNP00\_02\DC1-Y6-K42\364858\Sheets\01\_Specific\0 A-6\_BSM\_LS.dwg 03/08/17 - 11:37 pm

**LEGEND**

- BEARING WALL
- NON BEARING WALL
- INDICATES BEARING FROM POINT-LOAD ABOVE JACKS
- BEAM/HEADER
- PAD FOOTING
- STEEL COLUMN
- PORTAL FRAME
- JOIST/TRUSS
- LVL
- ENGINEERING PAGE NUMBER

SEE FC DETAILS FOR FRAMING CONNECTORS

- FLOOR PLAN NOTES**
1. ALL HEADERS ARE (2) 2x6 W/ 2x4 WALLS OR (3) 2x6 W/ 2x6 WALLS, UNLESS OTHERWISE NOTED.
  2. ALL HEADERS TO HAVE (1) 2x4 OR 2x6 JACK EACH END, UNLESS OTHERWISE NOTED.
  3. ALL EXTERIOR WALLS TO BE 4" AND ALL INTERIOR WALLS TO BE 3 1/2", UNLESS OTHERWISE NOTED.
  4. HATCHED AREAS INDICATE DROPPED CEILINGS. ALL DROPPED CEILINGS ARE 12" UNLESS OTHERWISE NOTED. SEE "BRACED WALL PANEL DETAIL SHEET" FOR SPECIAL WALL FRAMING LOCATIONS AND HEADER SIZES, IF APPLICABLE.
  5. SEE STANDARD DETAIL CATEGORY "IT" SHEET(S) FOR INTERIOR TRIM DETAILS.
  6. SEE ARCHITECTURAL DETAIL SHEET "AD" FOR HOUSE SPECIFIC INTERIOR TRIM OPTION TABLE.
  7. ALL WINDOWS HAVE T-0 1/2" HEADER HEIGHT UNLESS OTHERWISE NOTED.

- GYPSUM NOTES**
- AT GARAGE:  
GYPSUM BOARD AT COMMON WALLS, CEILING, BEAM WRAPS AND SUPPORTS PER STANDARD DETAIL FA-1(B) FIRE ASSEMBLIES OR AS REQUIRED BY LOCAL CODE.
- AT STAIRS:  
1/2" GYPSUM BOARD AT UNDERSIDE OF STAIRS AND WALLS IN CLOSET

**LVL PLY TO PLY FASTENING SCHEDULE:**

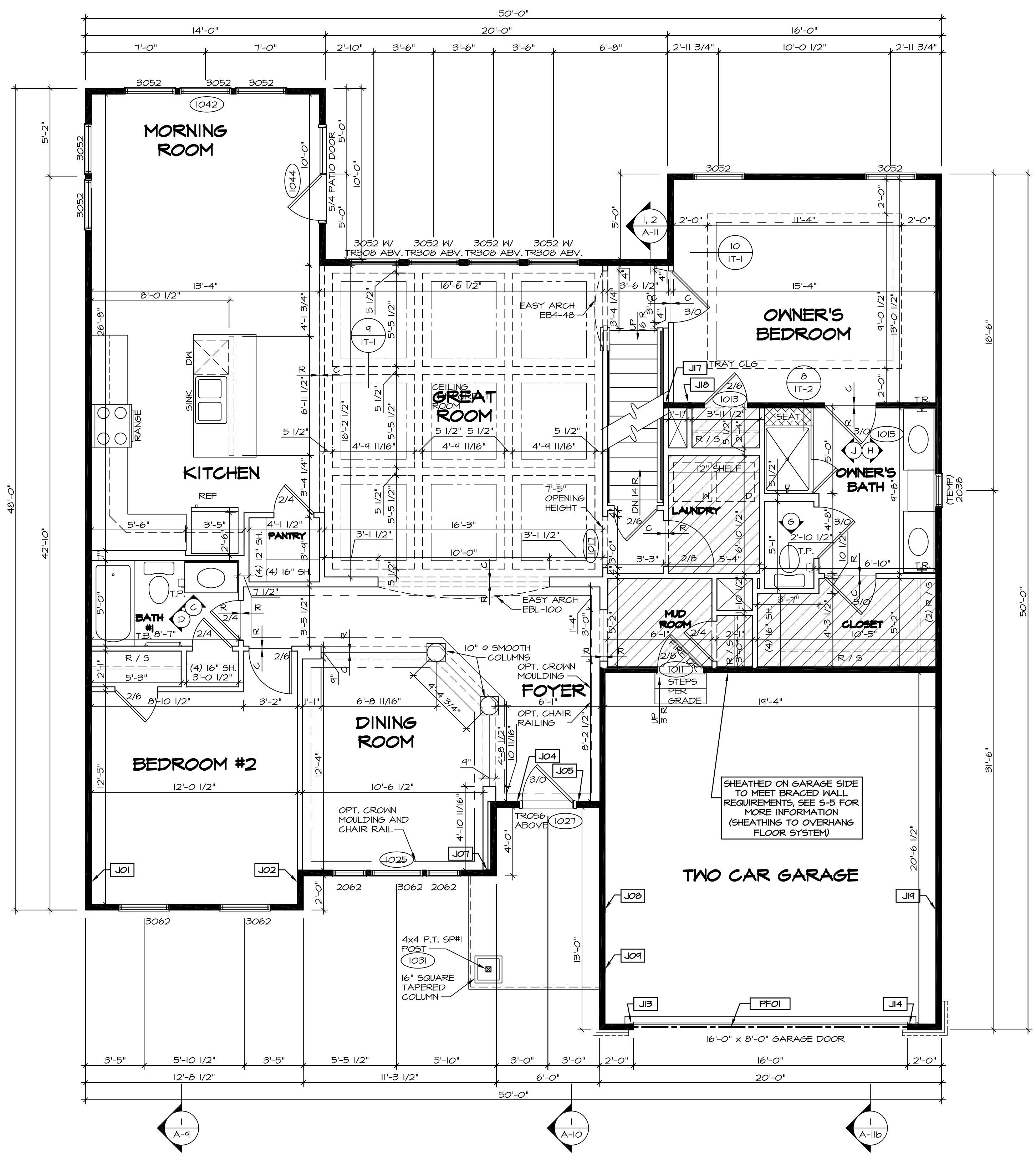
1.A - (2) PLY UP TO AND INCLUDING 11 7/8" TALL; FASTEN PLYS W/ (2) ROWS 16D NAILS AT 12" O.C.  
 2.A - (2) PLY 14" TO AND 18" TALL (INCLUSIVE); FASTEN PLYS W/ (3) ROWS 16D NAILS AT 12" O.C.  
 3.A - (2) PLY 20" TALL AND OVER; FASTEN PLYS W/ (4) ROWS 16D NAILS AT 12" O.C.  
 4.A - (3) PLY UP TO AND INCLUDING 11 7/8" TALL; FASTEN PLYS W/ (2) ROWS 16D NAILS AT 12" O.C. FROM EACH SIDE  
 5.A - (3) PLY 14" TO AND 18" TALL (INCLUSIVE); FASTEN PLYS W/ (3) ROWS 16D NAILS AT 12" O.C. FROM EACH SIDE  
 6.A - (3) PLY 20" TALL AND OVER; FASTEN PLYS W/ (4) ROWS 16D NAILS AT 12" O.C. FROM EACH SIDE

**FIRST FLOOR BEAM/HEADER SCHEDULE**

IDENTIFIER	DESCRIPTION	LENGTH	OPTIONS	ENG. NUM.	REMARKS
FF01	BEAM BUILT 2X12 - 2 PLY	14'-8"	6CB	1033	2-PLY, PORTAL FRAME

**FIRST FLOOR JACK SCHEDULE**

IDENTIFIER	DESCRIPTION	OPTIONS	ENG. NUM.	REMARKS
J01	JACK - (4) 2X4 SPH		1044	
J02	JACK - (4) 2X4 SPH		1044	
J04	JACK - (2) 2X4 SPF STUD GRADE		1027	
J05	JACK - (2) 2X4 SPF STUD GRADE		1027	
J07	JACK - (2) 2X4 SPF STUD GRADE	ELK	1031	
J08	JACK - (2) 2X4 SPF STUD GRADE	ELK	1044	
J09	JACK - (2) 2X4 SPF STUD GRADE	ELK	1031	
J13	JACK - (2) 2X4 SPF STUD GRADE	6CB	1033	
J14	JACK - (2) 2X4 SPF STUD GRADE	6CB	1033	
J17	JACK - 2X4 SPF STUD GRADE	BVV, MAV	1005, 1004	
J18	JACK - 2X4 SPF STUD GRADE	BVV, MAV	1005, 1004	
J19	JACK - (2) 2X4 SPF STUD GRADE	6CB, ELB, ELK	1044	



**FIRST FLOOR PLAN**  
SCALE: 1/4" = 1'-0"

REV. NO. DATE

08/04/16 N-DRAWING ALIGNMENT

REMARKS

SET NO. CNP00  
VERSION 02  
DRAWN BY  
DATE:  
OPTION

**CAROLINA PLACE**  
DRAWING TITLE  
FIRST FLOOR PLAN

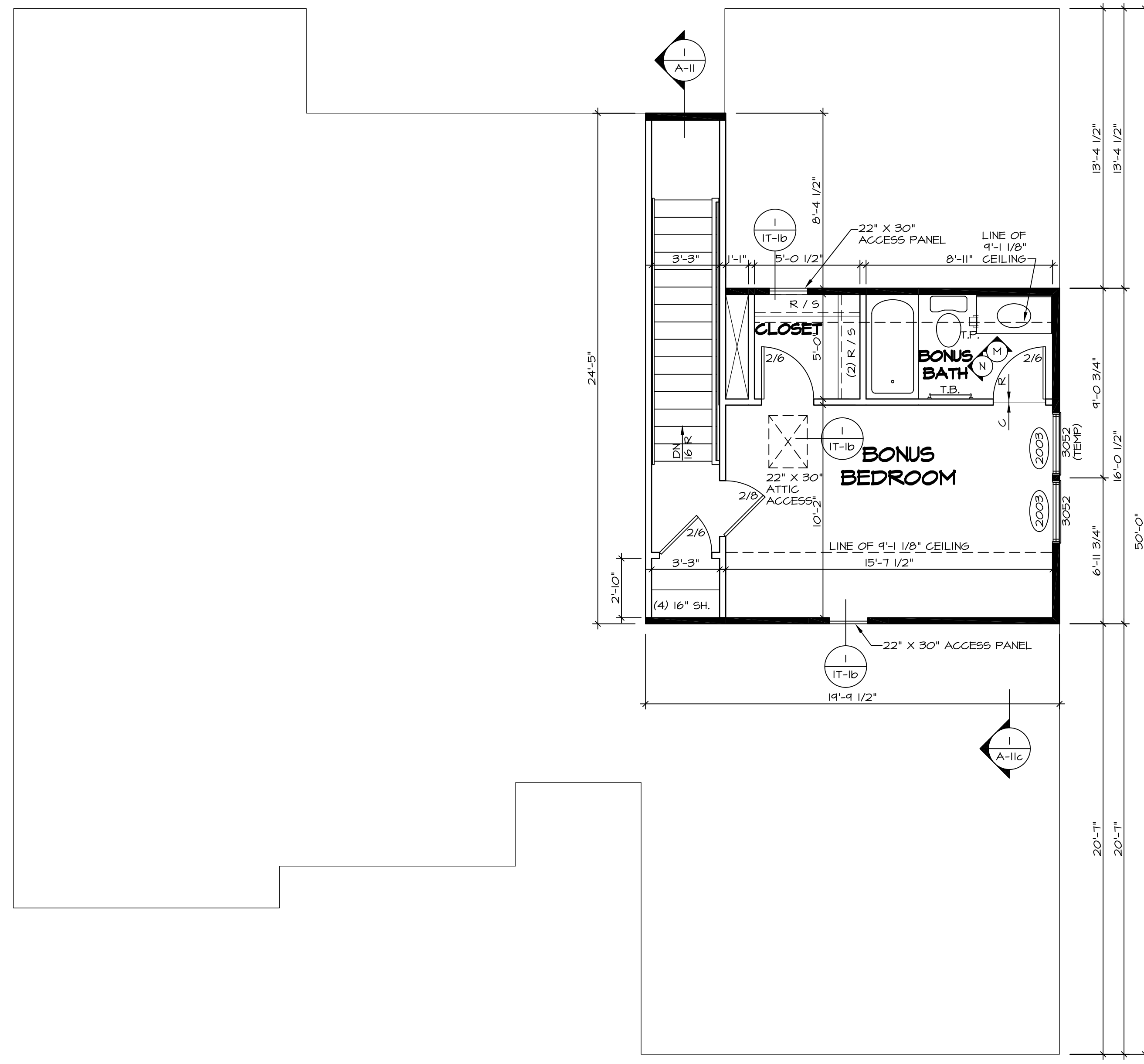
OPTION DESCRIPTION

42

NVR, Inc., owner, expressly reserves its common law copyright and other property rights in these plans. These plans are not to be altered, reproduced, or transmitted in any form or by any means, electronic or mechanical, including photocopying, recording, or by any information storage and retrieval system, without first obtaining the expressed written consent of NVR, Inc.

**NVR**  
NVR, Inc.  
Architectural Services  
Architects  
5285 Westchase Circle  
Frederick, MD 21703

C:\NVR\Solves\CAROLINA\_PLACE\_CNP00\_02\DC1-Y6-K42\564856A\Sheets\01\_Specific\02\_A-7\_Plan\LS.dwg 03/08/17 - 11:37 am



**LEGEND**

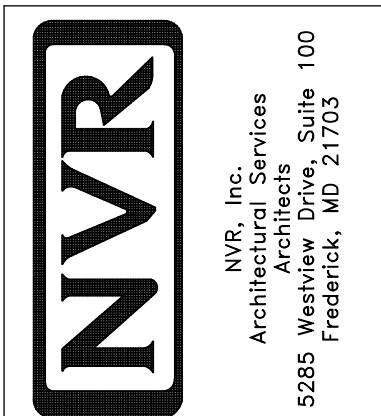
	BEARING WALL
	NON BEARING WALL
	INDICATES BEARING FROM POINT-LOAD ABOVE JACKS
	JACKS
	BEAM/HEADER
	PAD FOOTING
	STEEL COLUMN
	PORTAL FRAME
	JOIST/TRUSS
	LVL
	ENGINEERING PAGE NUMBER

SEE FC DETAILS FOR FRAMING CONNECTORS

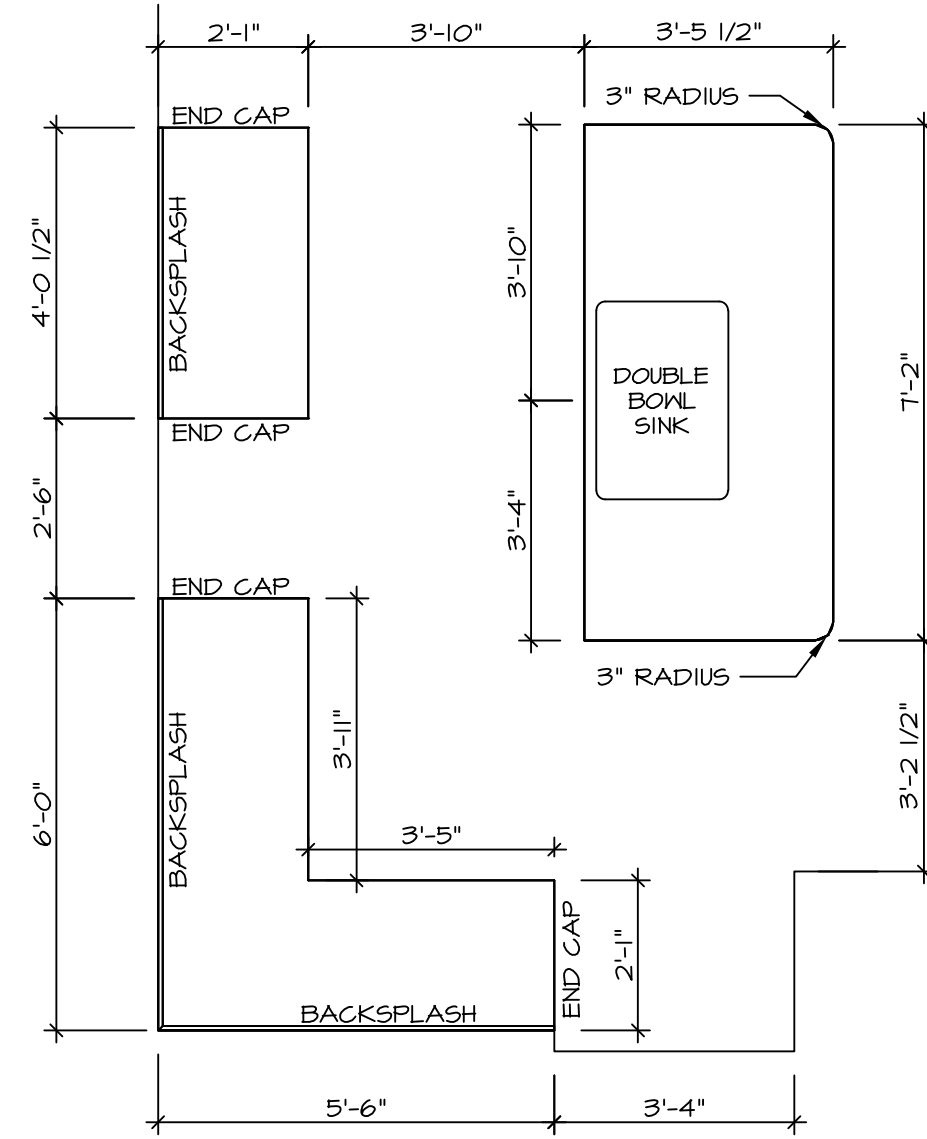
- FLOOR PLAN NOTES**
- ALL HEADERS ARE (2) 2x6 w/ 2x4 WALLS OR (3) 2x6 w/ 2x6 WALLS, UNLESS OTHERWISE NOTED.
  - ALL HEADERS TO HAVE (1) 2x4 OR 2x6 JACK EACH END, UNLESS OTHERWISE NOTED.
  - ALL EXTERIOR WALLS TO BE 4" AND ALL INTERIOR WALLS TO BE 3 1/2", UNLESS OTHERWISE NOTED.
  - HATCHED AREAS INDICATE DROPPED CEILINGS. ALL DROPPED CEILINGS ARE 12" UNLESS OTHERWISE NOTED.
  - SEE "BRACED WALL PANEL DETAIL SHEET" FOR SPECIAL WALL FRAMING LOCATIONS AND HEADER SIZES, IF APPLICABLE.
  - SEE STANDARD DETAIL CATEGORY "IT" SHEET(S) FOR INTERIOR TRIM DETAILS.
  - SEE ARCHITECTURAL DETAIL SHEET "AD" FOR HOUSE SPECIFIC INTERIOR TRIM OPTION TABLE.
  - ALL WINDOWS HAVE 7'-0 1/2" HEADER HEIGHT UNLESS OTHERWISE NOTED.

**SECOND FLOOR PLAN**  
SCALE: 1/4" = 1'-0"

SHEET NO. <b>A-8</b>	MODEL <b>CAROLINA PLACE</b>	SET NO. CNP00	REV. NO. 1	DATE 08/04/16	REMARKS
	DRAWING TITLE <b>SECOND FLOOR PLAN</b>	VERSION 02			
OPTION DESCRIPTION					
46					

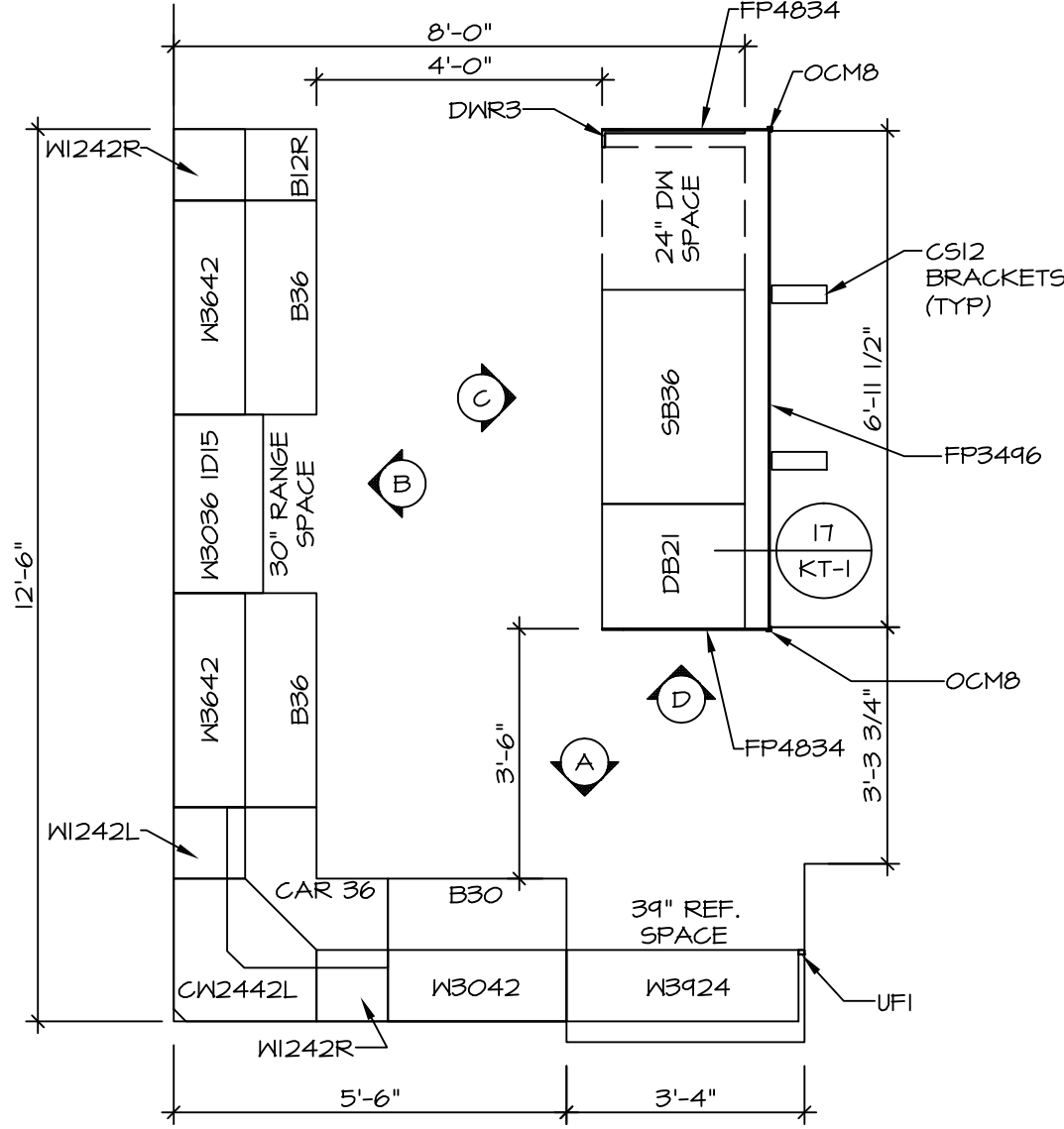


NVR, Inc., owner, expressly reserves its common law copyright and other property rights in these plans. These plans are not to be copied, reproduced, or transmitted in any form or by any means, nor are they to be assigned to any third party, without first obtaining the expressed written consent of NVR, Inc.



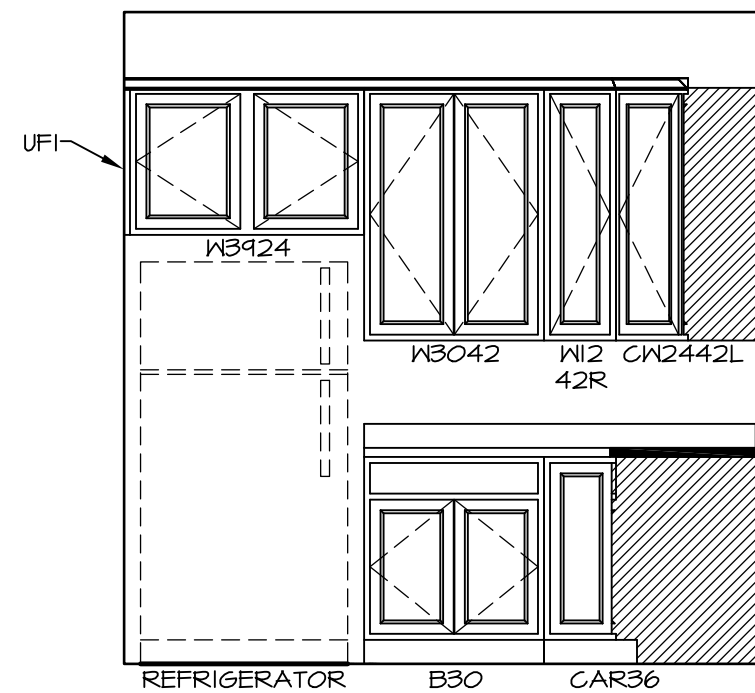
**KITCHEN COUNTERTOP PLAN - (KT-3117)**

2  
A-13 SCALE: 3/8" = 1'-0"



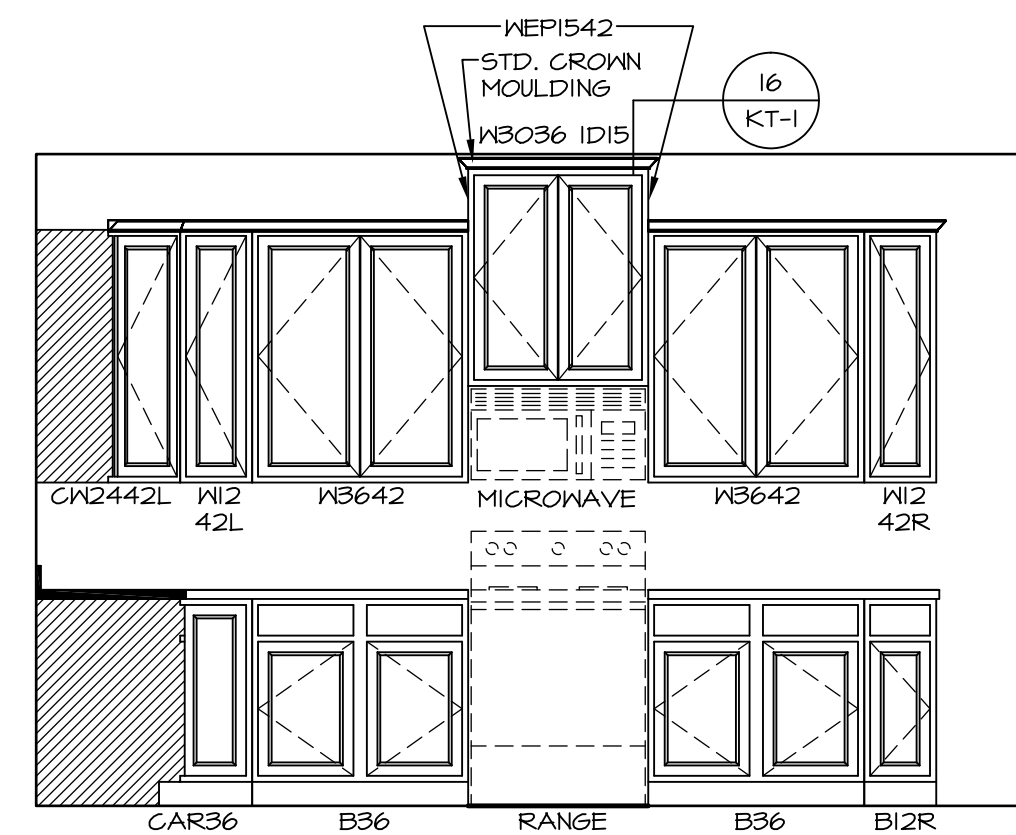
**KITCHEN CABINET PLAN - (KC-3117)**

1  
A-13 SCALE: 3/8" = 1'-0"



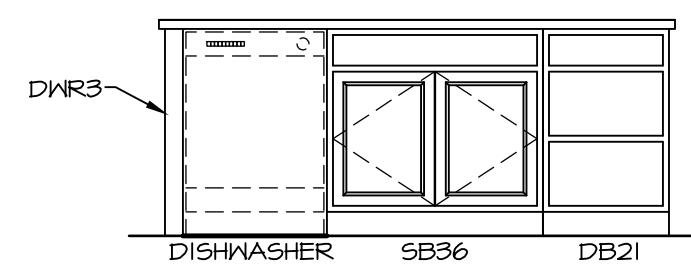
**A KITCHEN ELEVATION**

SCALE: 3/8" = 1'-0"



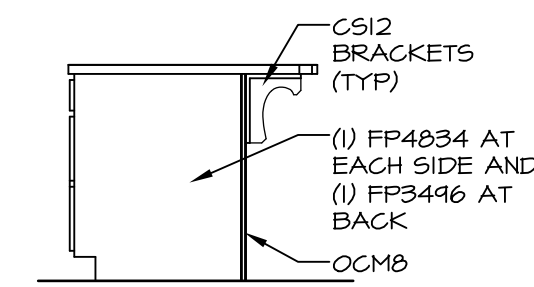
**B KITCHEN ELEVATION**

SCALE: 3/8" = 1'-0"



**C KITCHEN ELEVATION**

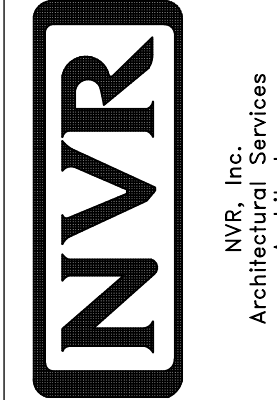
SCALE: 3/8" = 1'-0"



**D KITCHEN ELEVATION**

SCALE: 3/8" = 1'-0"

SHEET NO. **A-13**  
MODEL **CAROLINA PLACE**  
DRAWING TITLE **KITCHENS**  
OPTION DESCRIPTION



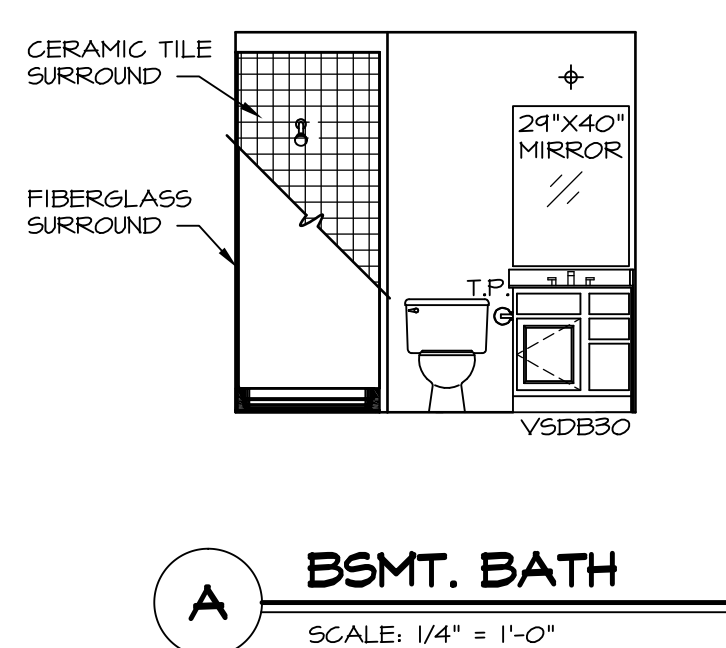
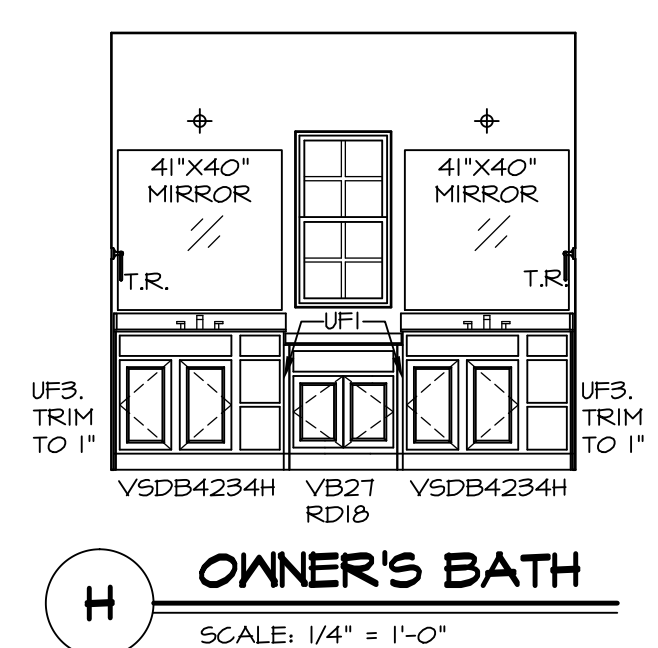
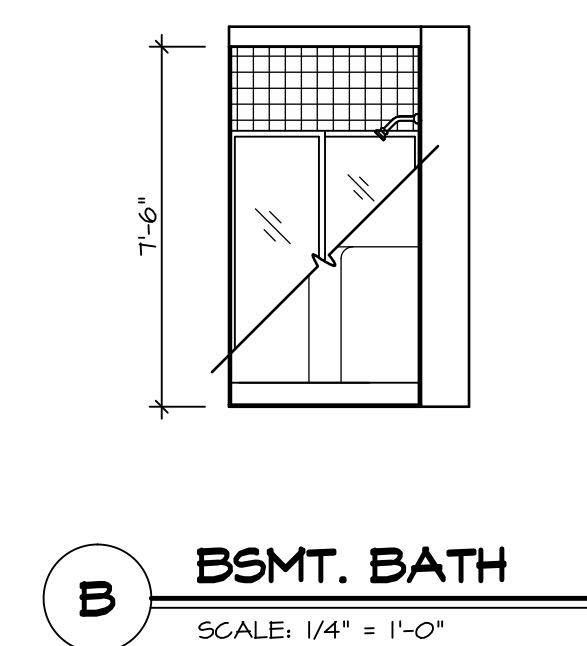
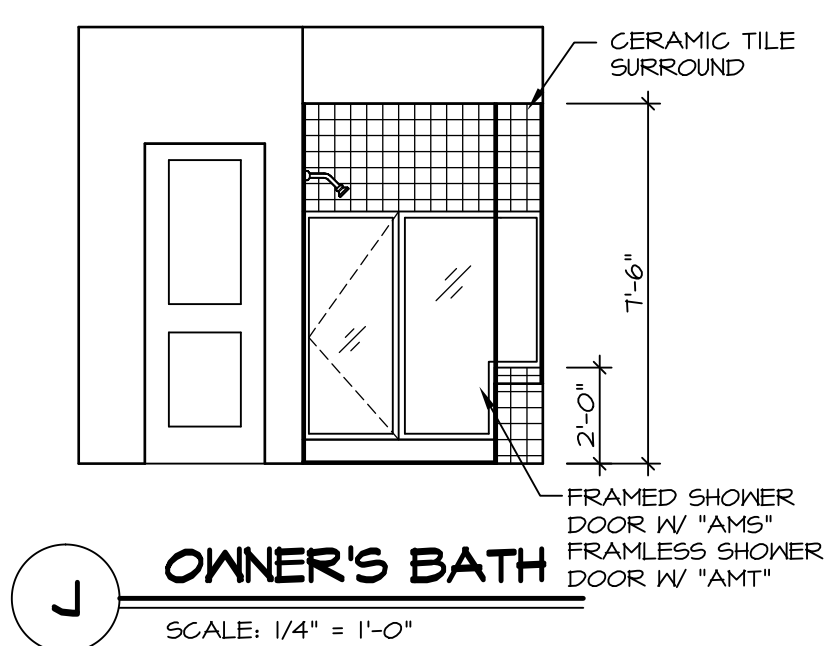
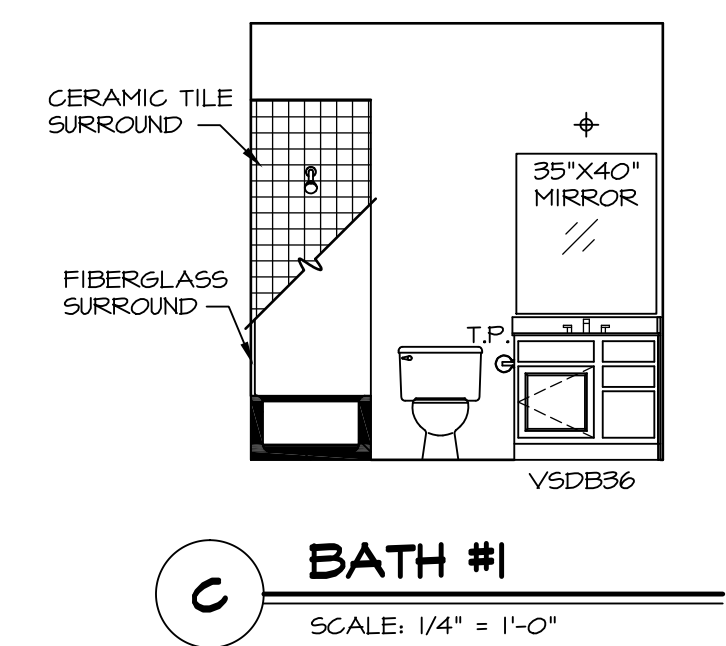
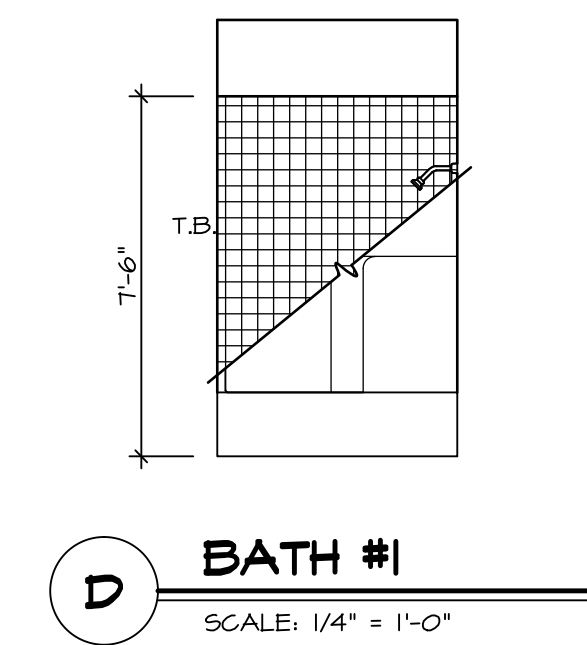
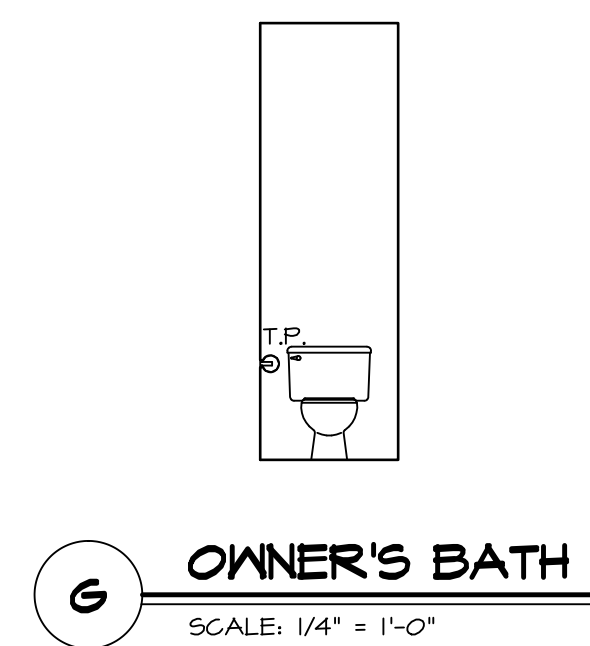
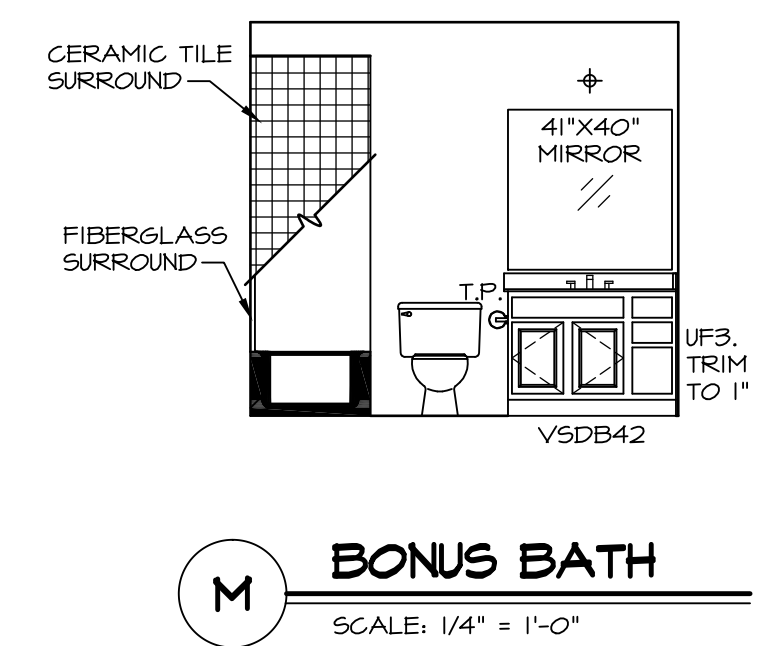
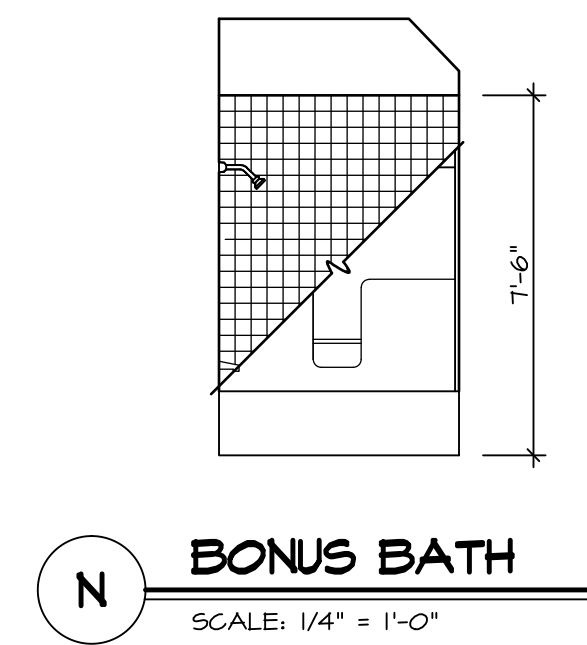
NVR, Inc., owner, expressly reserves its common law copyright and other property rights in these plans. These plans are not to be copied, reproduced, or transmitted in any form or by any means, nor are they to be assigned to any third party, without first obtaining the expressed written consent of NVR, Inc.

REV. NO. | DATE

REMARKS

**NOTES:**

1. TEMPERED GLASS SHOWER ENCLOSURE WITH SWING DOOR OR OPTIONAL SLIDING DOOR BY DIVISION
2. TUB ACCESS PANELS PROVIDED AS NEEDED, ALL MATERIALS BY DIVISION
3. REFER TO SHEET IT-2 FOR TUB AND SHOWER DETAILS.
4. ALL VSDB24-42 DRAWERS TO BE SET ON RIGHT HAND.
5. BATH ELEVATIONS ARE SHOWN PER PLAN.



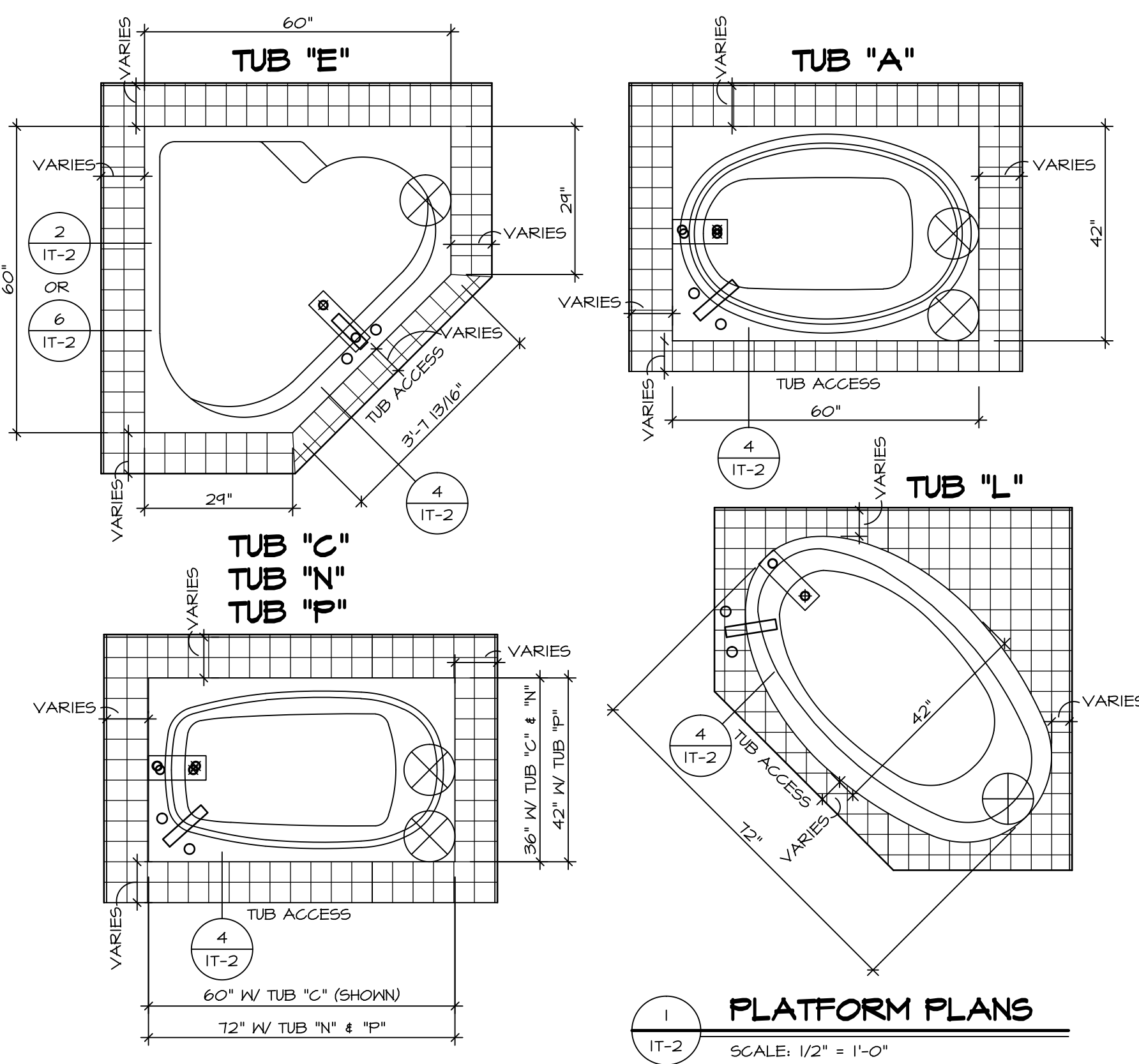
REV. NO.	DATE	REMARKS
1	08/04/16	N-DRAWING ALIGNMENT

NVR, Inc., owner, expressly reserves its common law copyright and other property rights in these plans. These plans are not to be copied, reproduced, or otherwise used in any way without the express written consent of NVR, Inc.

**NVR**  
NVR, Inc.  
Architectural Services  
Architects  
5285 Westwood Drive, Suite 100  
Frederick, MD 21703

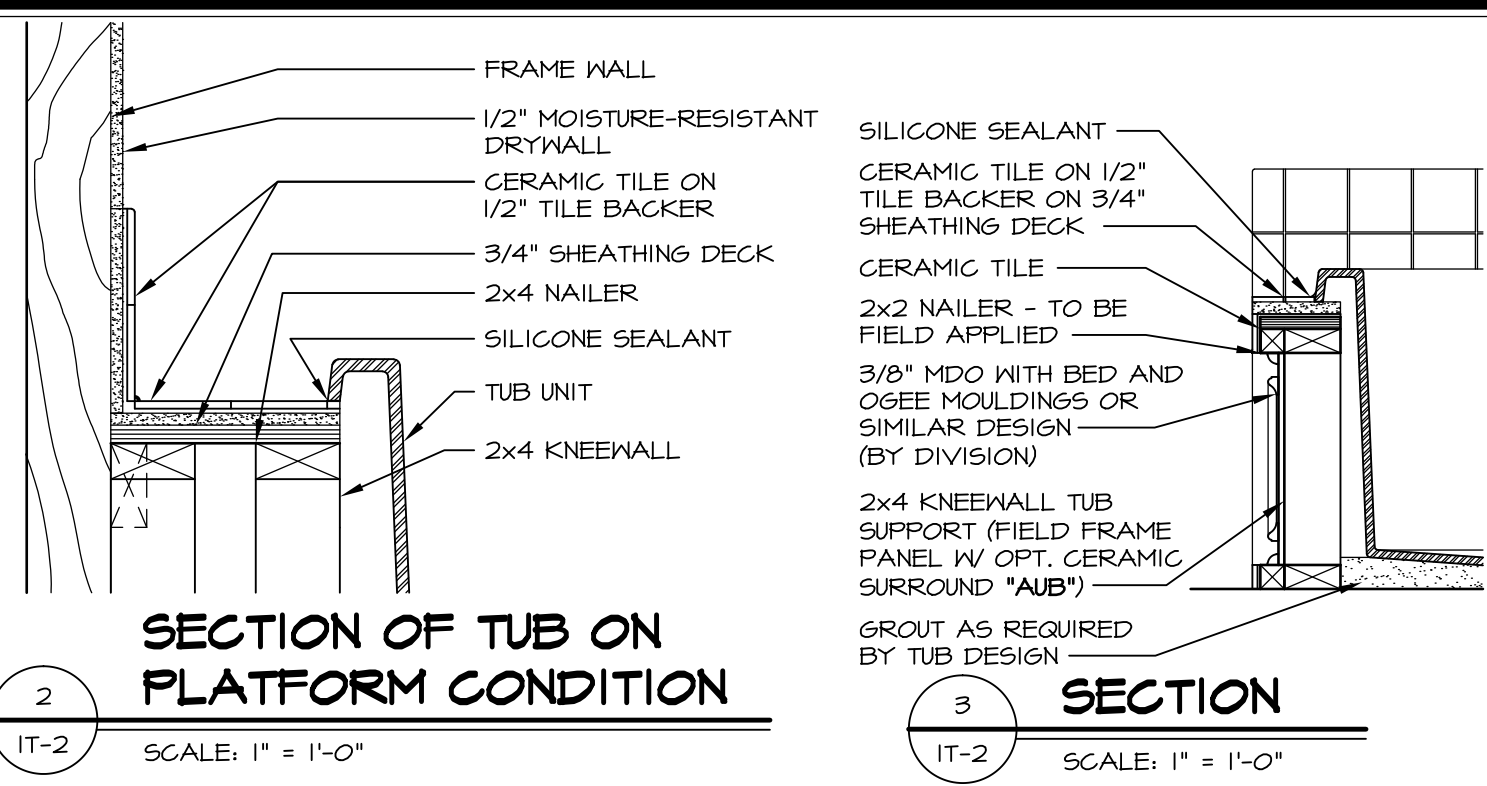
MODEL	CAROLINA PLACE
DRAWING TITLE	BATH ELEVATIONS
OPTION DESCRIPTION	
SHEET NO.	A-14
SET NO.	CNPOO
VERSION	02
DRAWN BY	
DATE	6/7/16
OPTION	
SHEET NO.	57



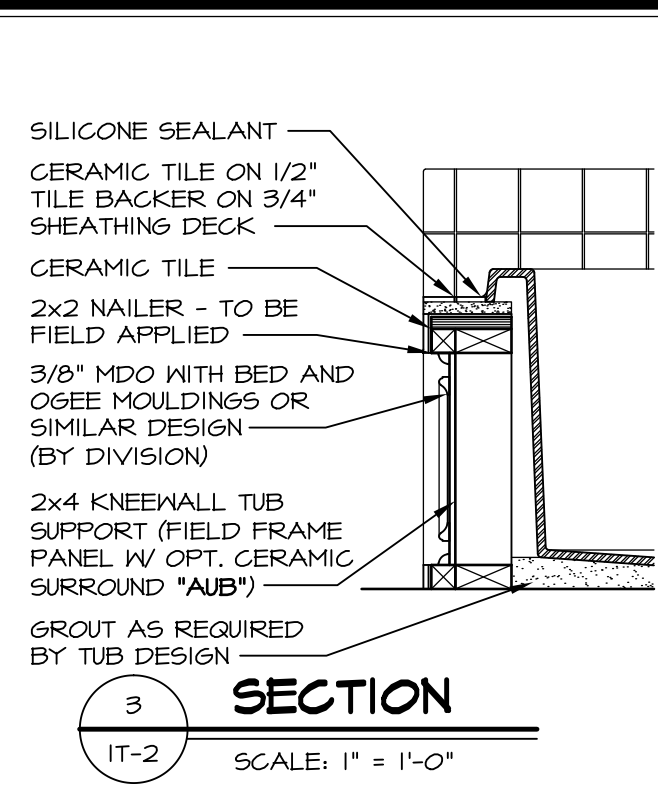


1 PLATFORM PLANS  
SCALE: 1/2" = 1'-0"

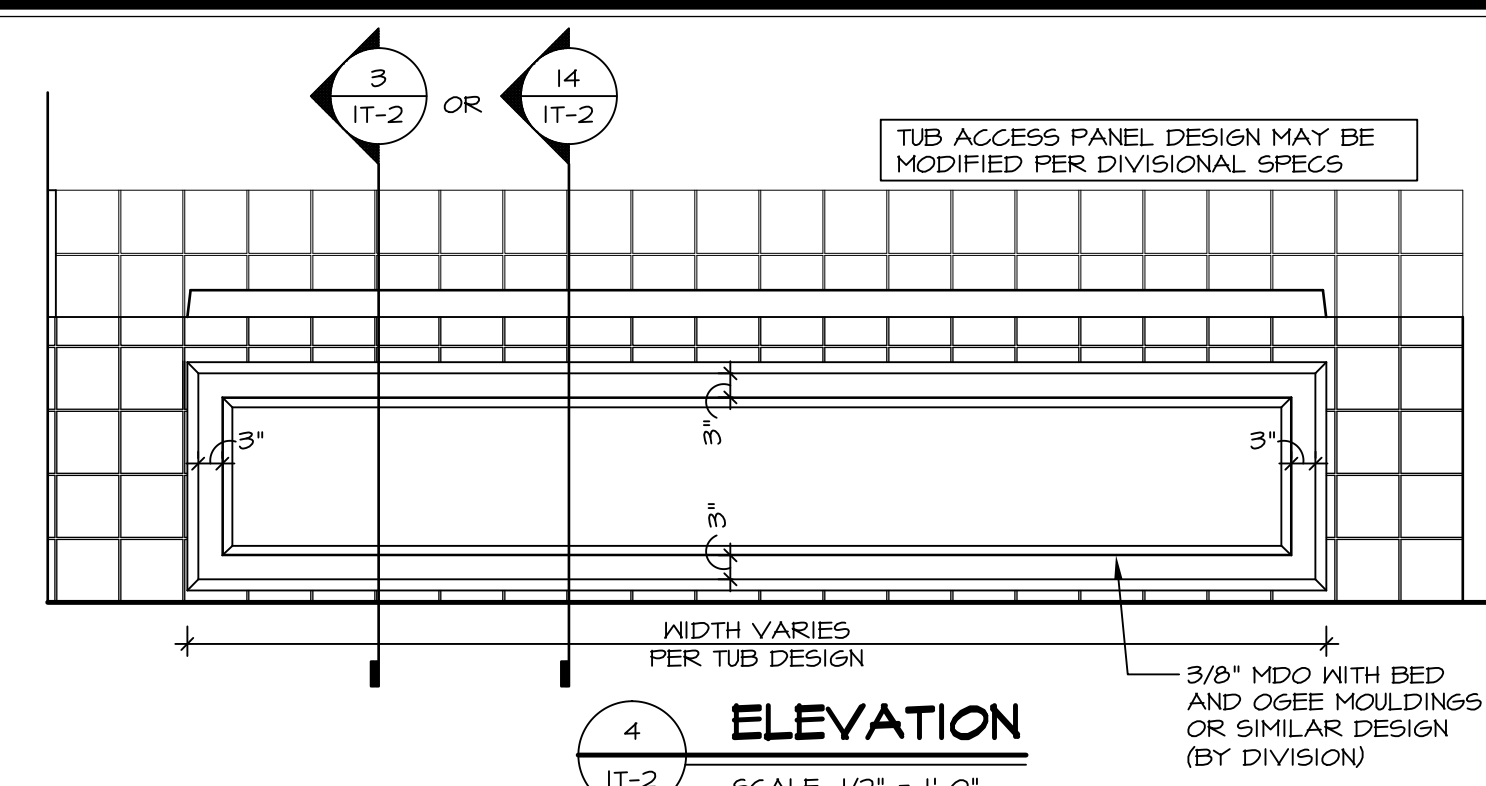
TUB	MANUF.	HEIGHT	WIDTH	LENGTH	TUB DECK PANEL HEIGHT
"A"	KOHLER/STERLING	18 3/4"	42"	60"	17 1/8"
"C"	KOHLER/STERLING	18 3/4"	36"	60"	17 1/8"
"E"	KOHLER/STERLING	19 1/2"	60"	60"	17 7/8"
"L"	KOHLER/STERLING	18 1/2"	42"	72"	16 7/8"
"N"	KOHLER/STERLING	18 3/4"	36"	72"	17 1/8"
"P"	KOHLER/STERLING	18 3/4"	42"	72"	17 1/8"



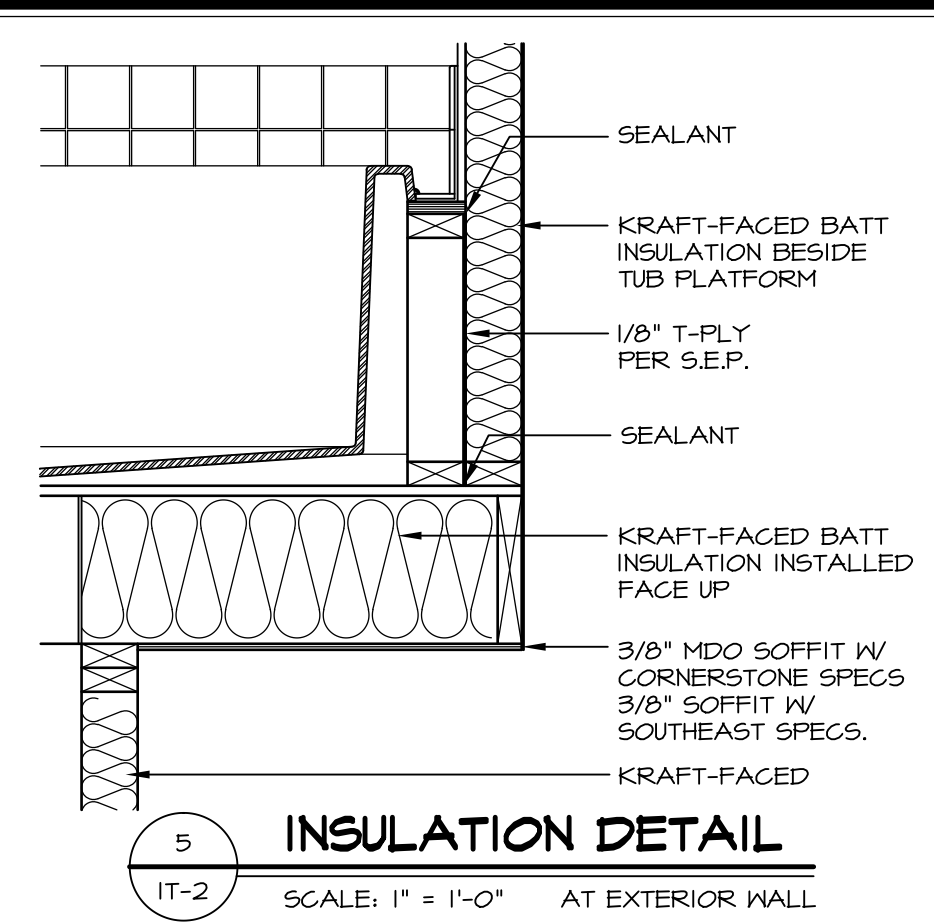
2 SECTION OF TUB ON PLATFORM CONDITION  
SCALE: 1" = 1'-0"



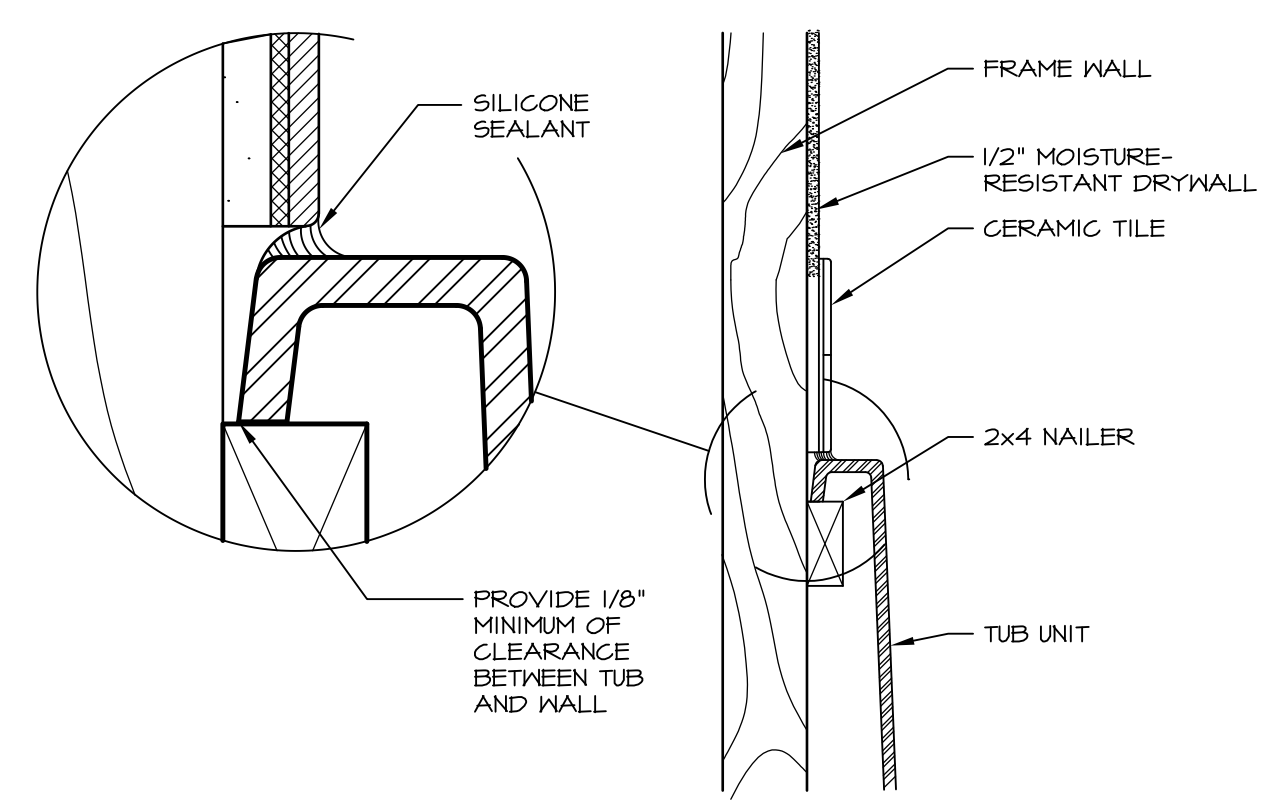
3 SECTION  
SCALE: 1" = 1'-0"



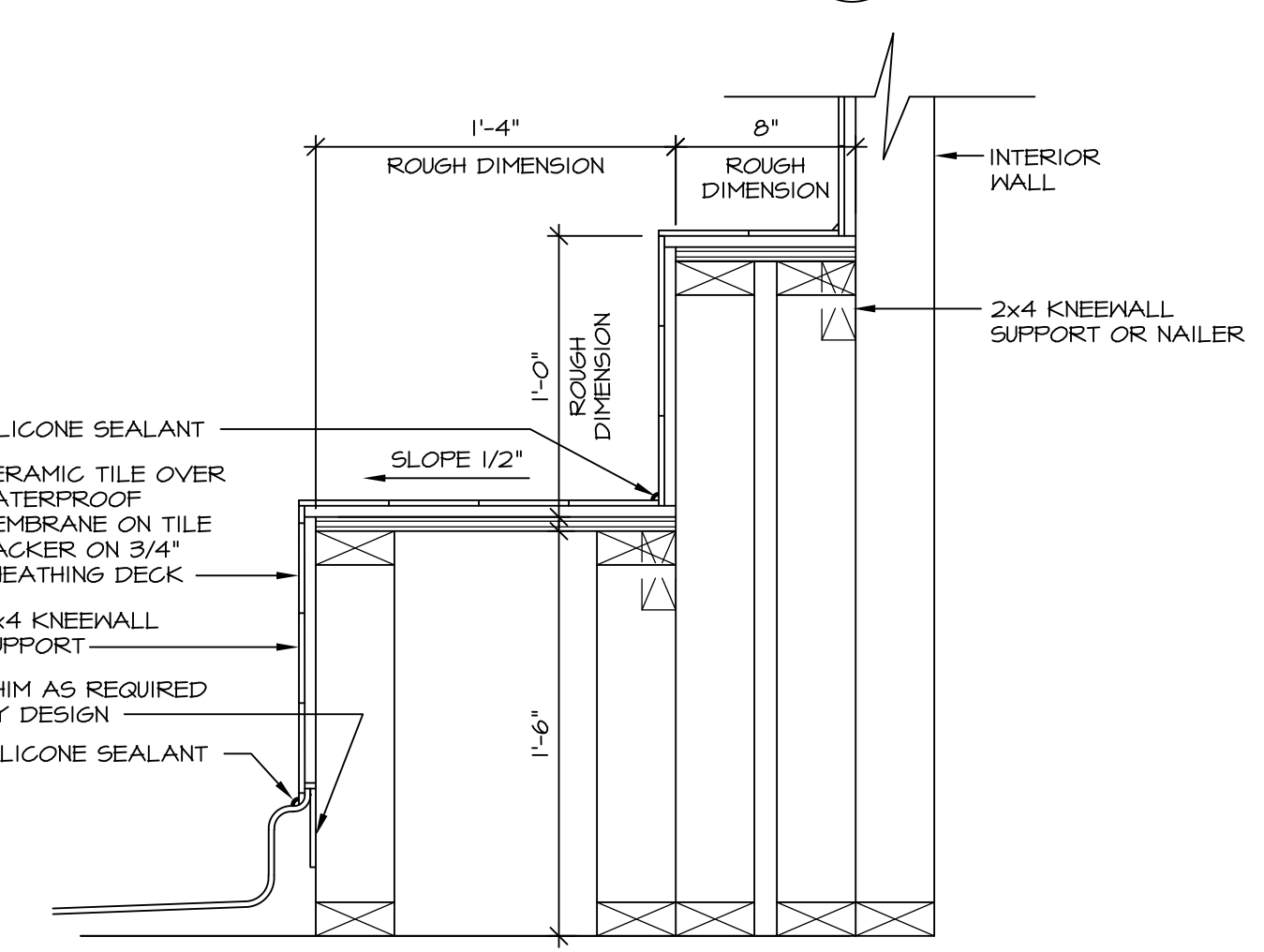
4 ELEVATION  
SCALE: 1/2" = 1'-0"



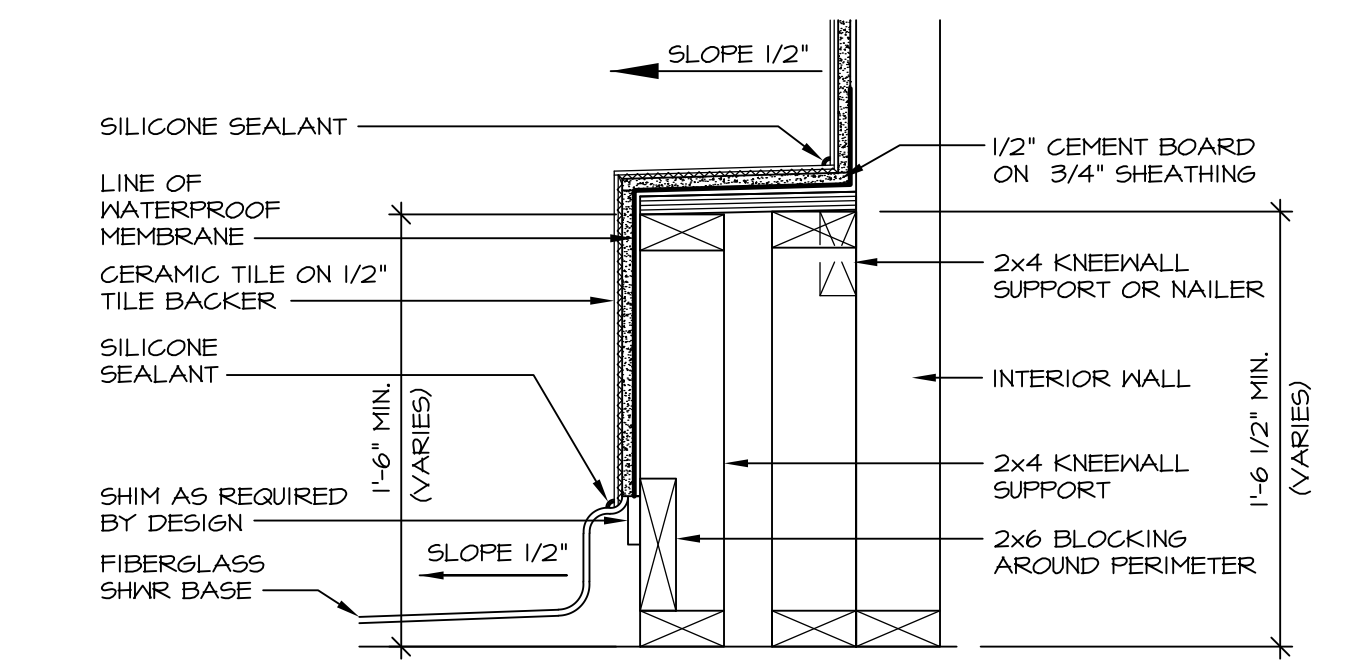
5 INSULATION DETAIL  
SCALE: 1" = 1'-0" AT EXTERIOR WALL



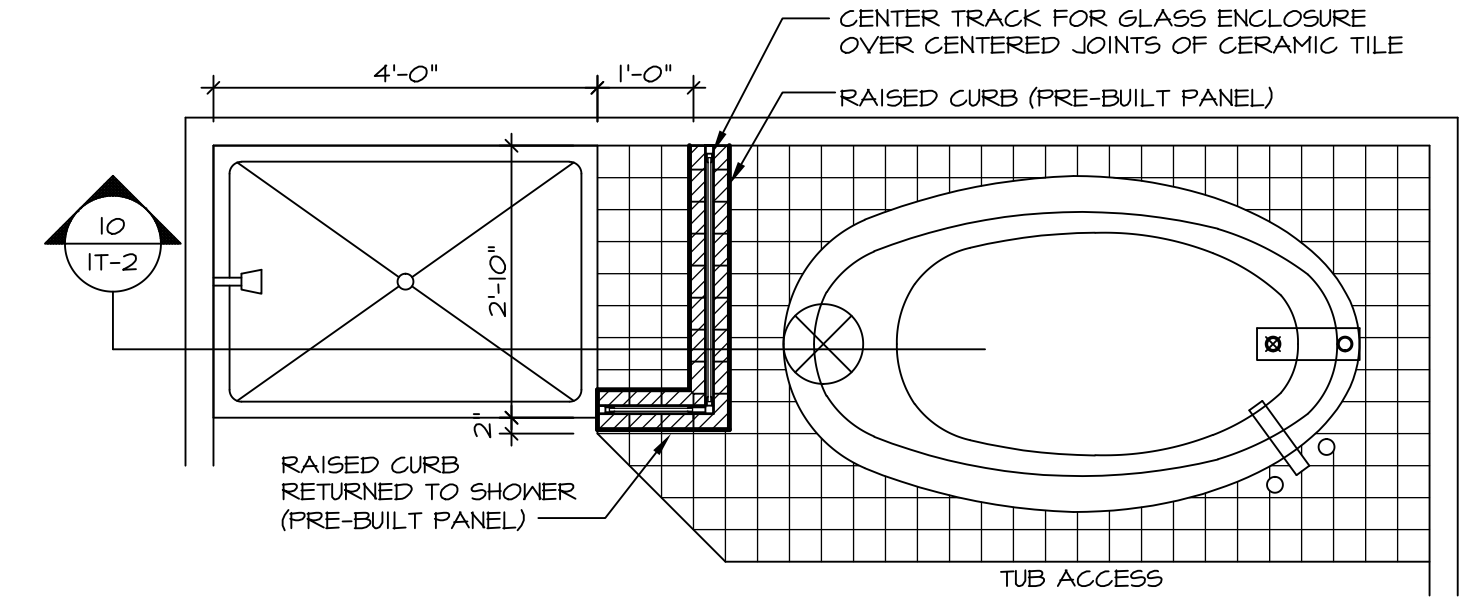
6 SECTION OF TUB TO WALL CONDITION  
SCALE: 1 1/2" = 1'-0"



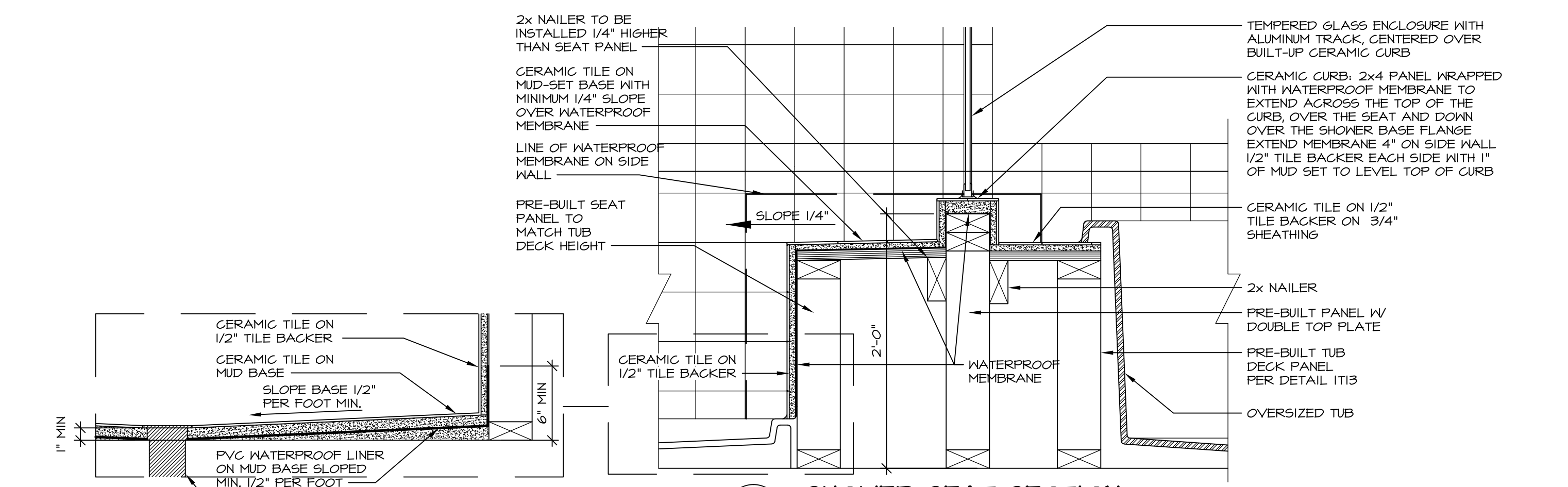
7 SECTION OF SHOWER SEAT AND SHELF  
SCALE: 1 1/2" = 1'-0"



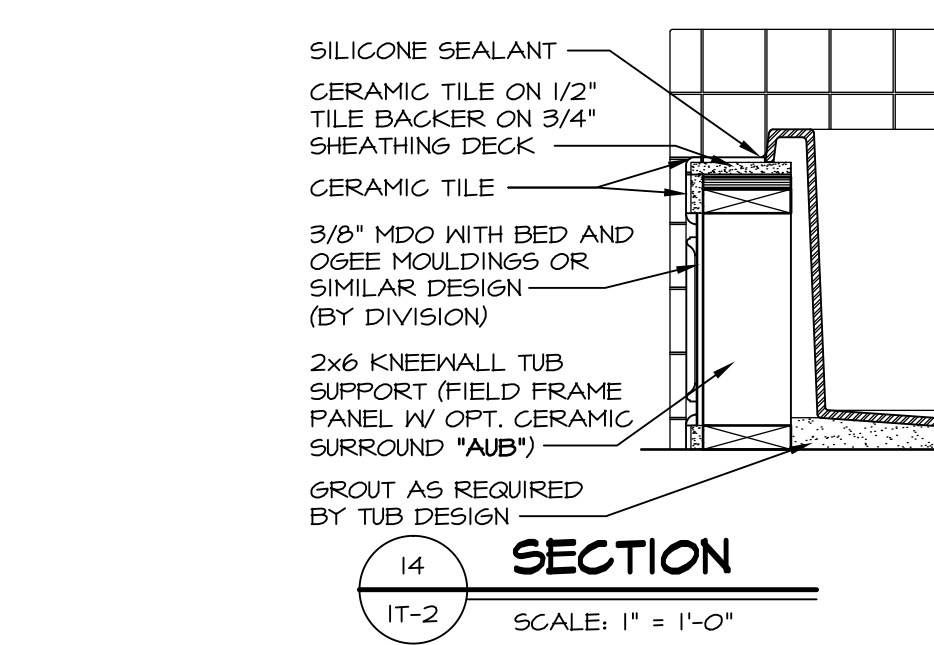
8 SECTION OF SHOWER SEAT  
SCALE: 1-1/2" = 1'-0" FIBERGLASS SHOWER BASE



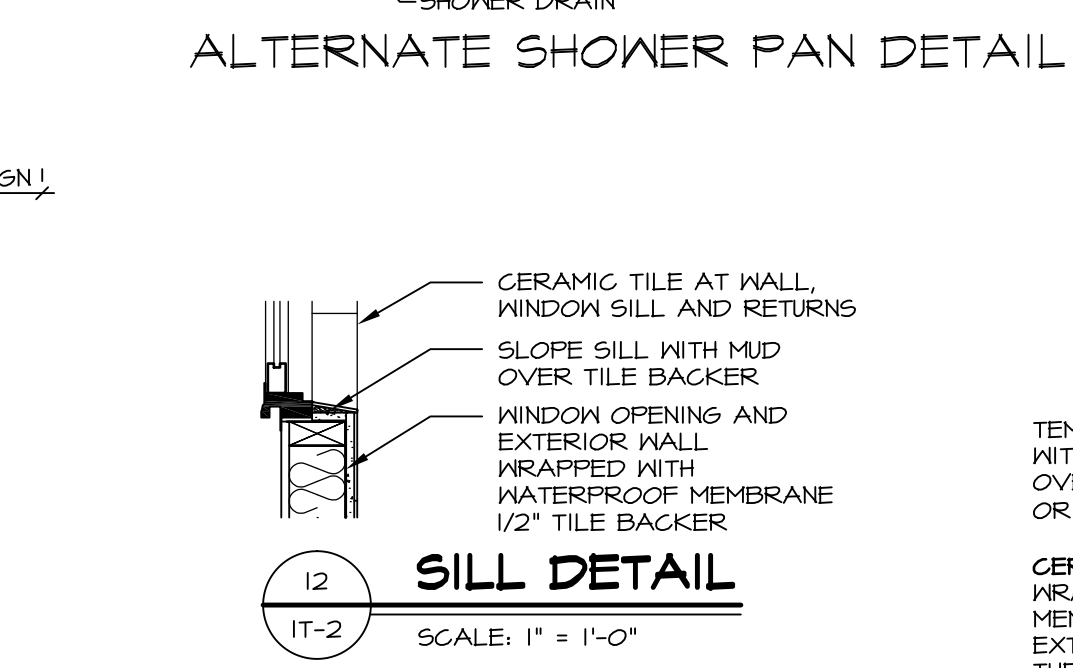
9 SHOWER SEAT PLAN / DETAIL  
SCALE: 1/2" = 1'-0"



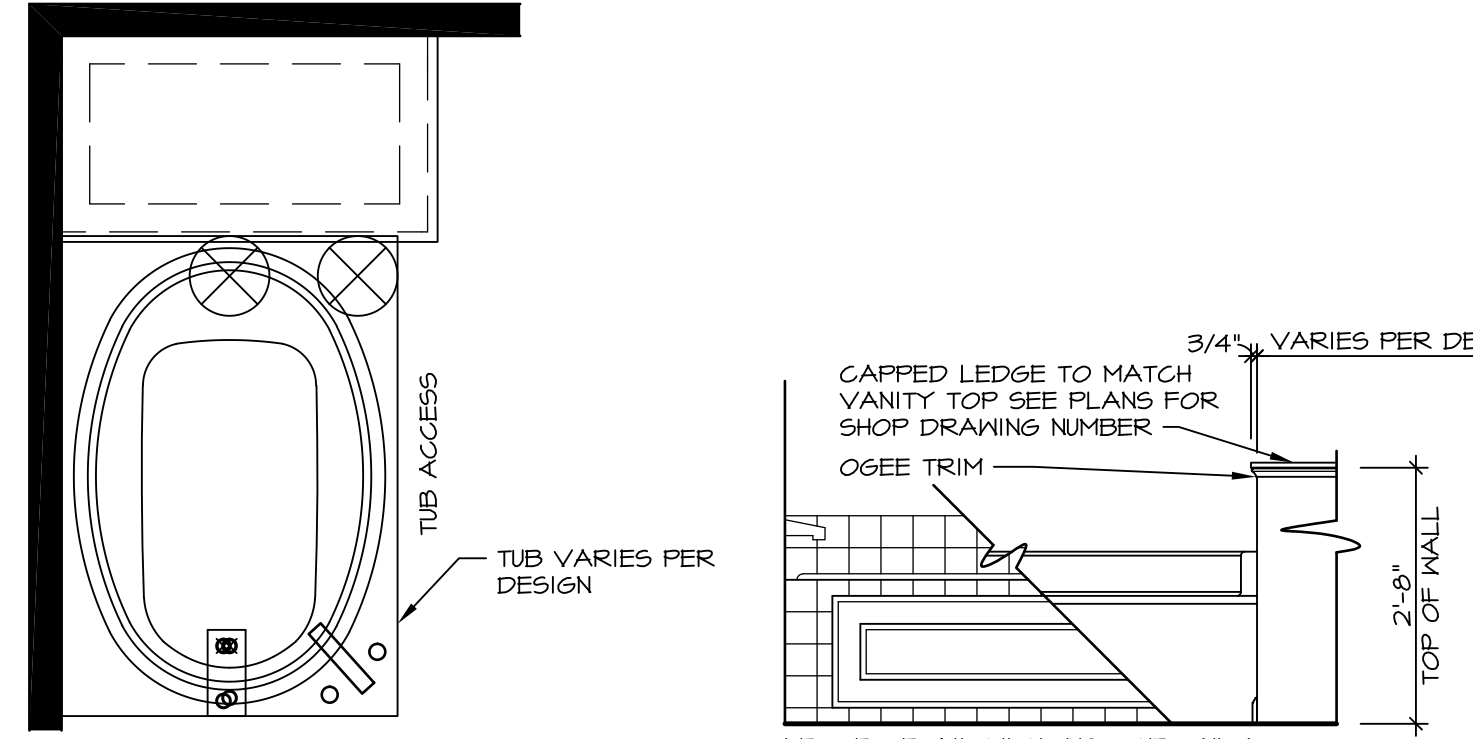
10 SHOWER SEAT SECTION  
SCALE: 1-1/2" = 1'-0"



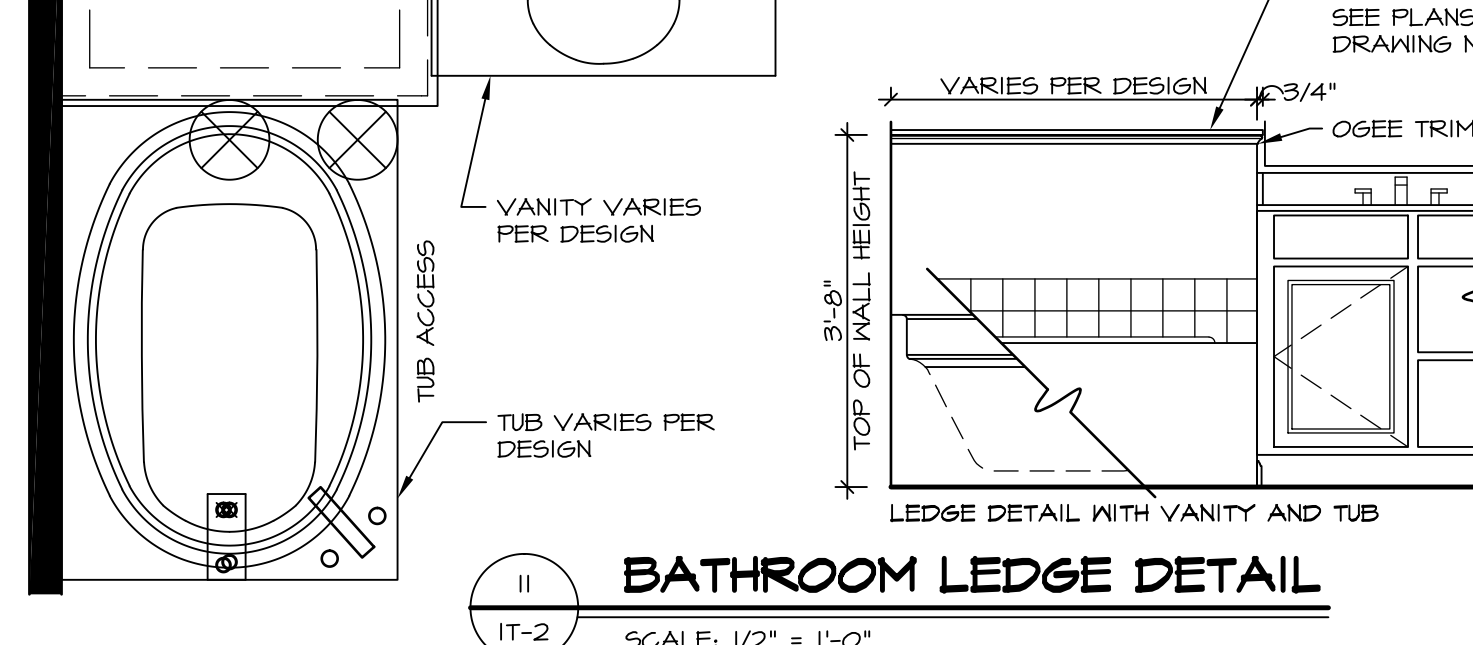
14 SECTION  
SCALE: 1" = 1'-0"



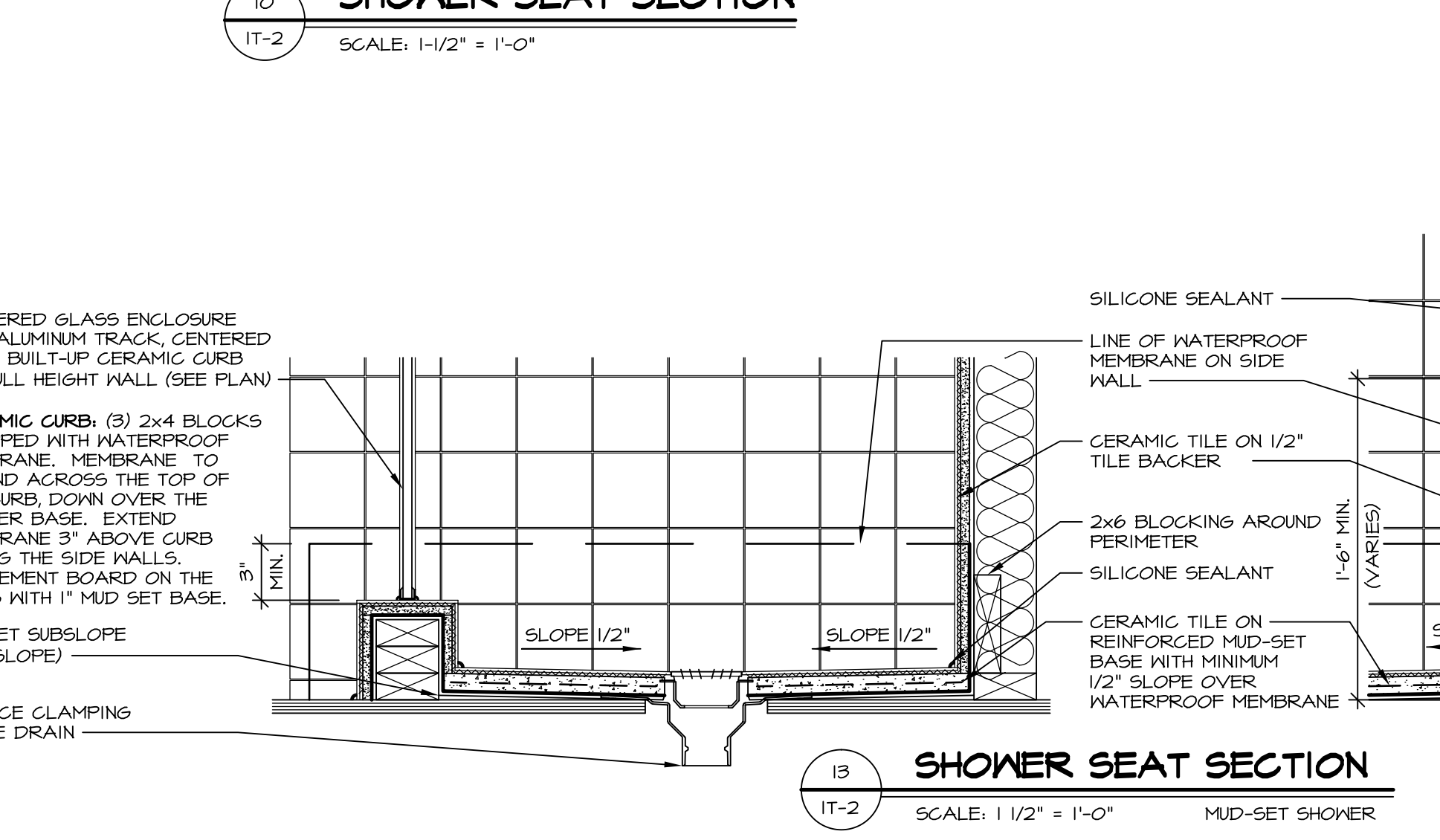
12 SILL DETAIL  
SCALE: 1" = 1'-0"



11 BATHROOM LEDGE DETAIL  
SCALE: 1/2" = 1'-0"



11 BATHROOM LEDGE DETAIL  
SCALE: 1/2" = 1'-0"



13 SHOWER SEAT SECTION  
SCALE: 1 1/2" = 1'-0" MUD-SET SHOWER

REMARKS

REV. NO. DATE

SET NO. NVR

VERSION

DRAWN BY

DATE:

OPTION

MODEL

**STANDARD DETAILS**

DRAWING TITLE

**INTERIOR TRIM DETAILS**

BATH DETAILS

OPTION DESCRIPTION

**IT-2**

J:\Dwg\NVR\Interior Trim\IT2.dwg 11/07/16 - 10:52 am

**NVR**

NVR, Inc.  
Architectural Services  
21 Baychester Ave. A  
Brooklyn, NY 11214