

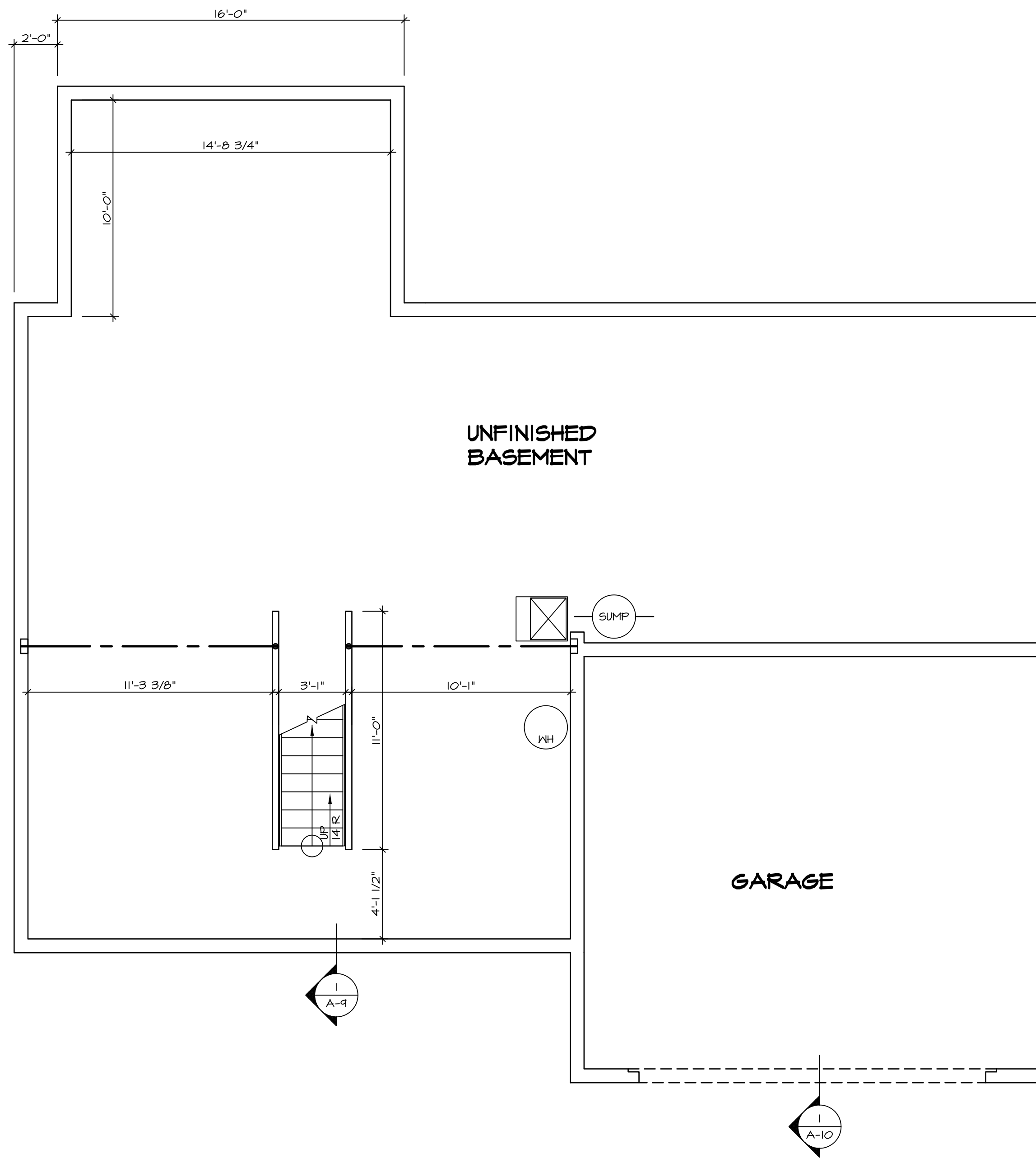
1 PLUMBING PLAN  
A-5 SCALE: 1/4" = 1'-0"

SHEET NO. <b>A-5</b>	MODEL <b>PALERMO</b>	SET NO. <b>PALOO</b>
OPTION DESCRIPTION <b>48</b>	VERSION <b>03</b>	DRAWN BY <b>DATE:</b>
	DRAWING TITLE <b>PLUMBING PLAN</b>	OPTION <b>OPTION</b>

**NVR**  
NVR, Inc.  
Architectural Services  
5285 Westpark Drive, Suite 100  
Frederick, MD 21703

NVR, Inc., owner, expressly reserves its copyright in these plans. These plans are not to be reproduced, changed, copied, or otherwise used in any way without the written consent of NVR, Inc.

REV. NO.	DATE	REMARKS



**LEGEND**

- BEARING WALL
- NON BEARING WALL
- INDICATES BEARING FROM POINT-LOAD ABOVE
- JACKS
- BEAM/HEADER
- PAD FOOTING
- STEEL COLUMN
- PORTAL FRAME
- JOIST/TRUSS
- LVL
- ENGINEERING PAGE NUMBER

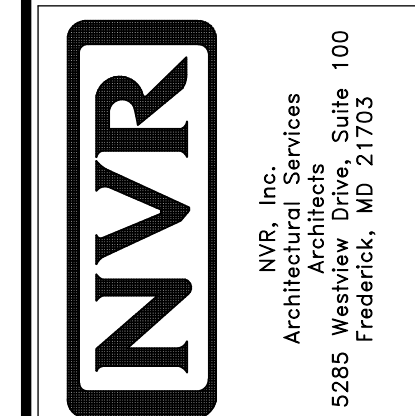
SEE FC DETAILS FOR FRAMING CONNECTORS

- FLOOR PLAN NOTES**
1. ALL HEADERS ARE (2) 2x6 w/ 2x4 WALLS OR (3) 2x6 w/ 2x6 WALLS, UNLESS OTHERWISE NOTED.
  2. ALL HEADERS TO HAVE (1) 2x4 OR 2x6 JACK EACH END, UNLESS OTHERWISE NOTED.
  3. ALL EXTERIOR WALLS TO BE 4" AND ALL INTERIOR WALLS TO BE 3 1/2", UNLESS OTHERWISE NOTED.
  4. HATCHED AREAS INDICATE DROPPED CEILINGS. ALL DROPPED CEILINGS ARE 12" UNLESS OTHERWISE NOTED.
  5. SEE "BRACED WALL PANEL DETAIL SHEET" FOR SPECIAL WALL FRAMING LOCATIONS AND HEADER SIZES, IF APPLICABLE.
  6. SEE STANDARD DETAIL CATEGORY "IT" SHEET(S) FOR INTERIOR TRIM DETAILS.
  7. SEE ARCHITECTURAL DETAIL SHEET "AD" FOR HOUSE SPECIFIC INTERIOR TRIM OPTION TABLE.
  8. ALL WINDOWS HAVE 7'-0" 1/2" HEADER HEIGHT UNLESS OTHERWISE NOTED.
  9. ALL CASED OPENINGS AT T-11", UNLESS OTHERWISE NOTED.

- GYPSUM NOTES**
- AT GARAGE:  
GYPSUM BOARD AT COMMON WALLS, CEILING, BEAM WRAPS AND SUPPORTS PER STANDARD DETAIL FA-1(b) FIRE ASSEMBLIES OR AS REQUIRED BY LOCAL CODE.
- AT STAIRS:  
1/2" GYPSUM BOARD AT UNDERSIDE OF STAIRS AND WALLS IN CLOSET

REV. NO.	DATE	REMARKS
1	08/05/16	TH - DRAWING ALIGNMENT

NVR, Inc., owner, expressly reserves its common law copyright in these plans. These plans are not to be reproduced, changed, adapted, or otherwise used in any way without the prior written consent of NVR, Inc.



SHEET NO.	MODEL	VERSION	DRAWN BY	DATE:	OPTION
A-6	PALERMO	03			
	DRAWING TITLE				
	BASEMENT FLOOR PLAN				
	OPTION DESCRIPTION				
	51				

**BASEMENT FLOOR PLAN**  
SCALE: 1/4" = 1'-0"

FIRST FLOOR JACK SCHEDULE				
IDENTIFIER	DESCRIPTION	OPTIONS	ENG. NUM.	REMARKS
J101	JACK - (2) 2X4 SPF STUD GRADE		1072	
J102	JACK - (2) 2X4 SPF STUD GRADE		1072	
J106	JACK - (2) 2X4 SPF STUD GRADE		1012	
J107	JACK - (2) 2X4 SPF STUD GRADE		1012	
J108	JACK - (2) 2X4 SPF STUD GRADE		1012	
J104	JACK - (3) 2X4 SPF STUD GRADE	6CB	1046	
J110	JACK - (3) 2X4 SPF STUD GRADE	6CB	1046	
J120	JACK - (4) 2X6 SPF STUD GRADE	MAA	1014	
J121	JACK - (3) 2X6 SPF STUD GRADE	MAA	1014	FIELD INSTALLED
J122	JACK - (3) 2X4 SPF STUD GRADE	SRN	1040	
J157	JACK - (2) 2X4 SP#1	ELE	1021	
J170	JACK - (2) 2X4 SP#1	ELE		

**LVL PLY TO PLY FASTENING SCHEDULE:**

1A - (2) FLY UP TO AND INCLUDING 1 7/8" TALL; FASTEN FLIES W/ (2) ROWS 16D NAILS AT 12" O.C.  
 2A - (2) FLY 14" TO AND INCLUDING 18" TALL (INCLUSIVE); FASTEN FLIES W/ (3) ROWS 16D NAILS AT 12" O.C.  
 3A - (2) FLY 20" TALL AND OVER; FASTEN FLIES W/ (4) ROWS 16D NAILS AT 12" O.C.  
 4A - (3) FLY UP TO AND INCLUDING 1 7/8" TALL; FASTEN FLIES W/ (2) ROWS 16D NAILS AT 12" O.C. FROM EACH SIDE  
 5A - (3) FLY 14" TO AND INCLUDING 18" TALL (INCLUSIVE); FASTEN FLIES W/ (3) ROWS 16D NAILS AT 12" O.C. FROM EACH SIDE  
 6A - (3) FLY 20" TALL AND OVER; FASTEN FLIES W/ (4) ROWS 16D NAILS AT 12" O.C. FROM EACH SIDE

FIRST FLOOR BEAM/HEADER SCHEDULE					
IDENTIFIER	DESCRIPTION	LENGTH	OPTIONS	ENG. NUM.	REMARKS
B101-3	LVL - 16	14'-4 1/2"	MAA	1014	5A, FIELD INSTALL
B106-2	LVL - 16	17'-4"	ZSU	1044	2A, FIELD INSTALL

LEGEND	
	BEARING WALL
	NON BEARING WALL
	INDICATES BEARING FROM POINT-LOAD ABOVE
	JACKS
	BEAM/HEADER
	PAD FOOTING
	STEEL COLUMN
	PORTAL FRAME
	JOIST/TRUSS
	LVL
	ENGINEERING PAGE NUMBER

SEE FC DETAILS FOR FRAMING CONNECTORS

STEEL COLUMN SCHEDULE					
IDENTIFIER	STYLE	HEIGHT	OPTIONS	ENG. NUM.	REMARKS

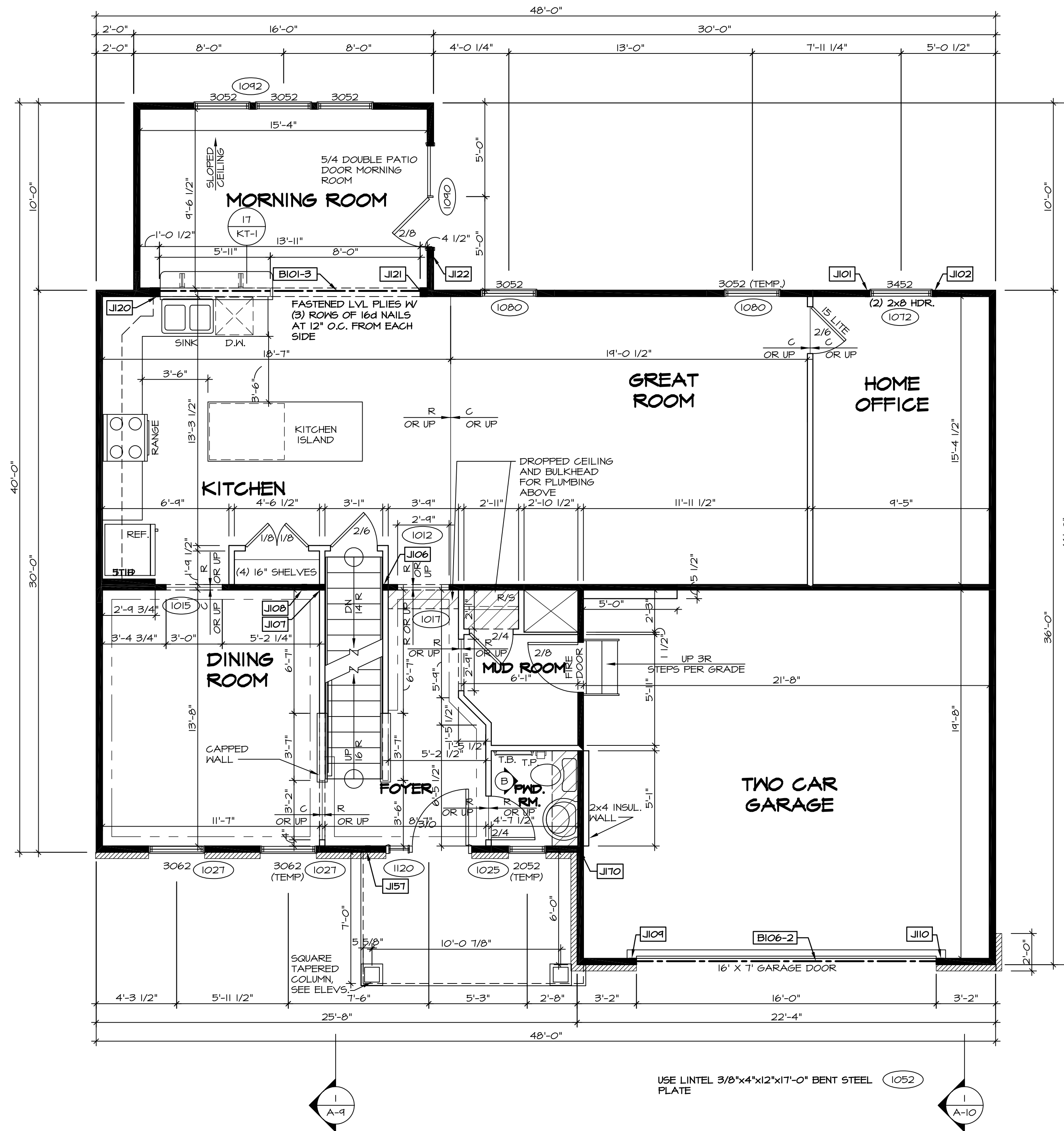
**FLOOR PLAN NOTES**

- ALL HEADERS ARE (2) 2x6 W/ 2x4 WALLS OR (3) 2x6 W/ 2x6 WALLS, UNLESS OTHERWISE NOTED.
- ALL HEADERS TO HAVE (1) 2x4 OR 2x6 JACK EACH END, UNLESS OTHERWISE NOTED.
- ALL EXTERIOR WALLS TO BE 4" AND ALL INTERIOR WALLS TO BE 3 1/2", UNLESS OTHERWISE NOTED.
- HATCHED AREAS INDICATE DROPPED CEILINGS. ALL DROPPED CEILINGS ARE 12" UNLESS OTHERWISE NOTED.
- SEE "BRACED WALL PANEL DETAIL SHEET" FOR SPECIAL WALL FRAMING LOCATIONS AND HEADER SIZES, IF APPLICABLE.
- SEE STANDARD DETAIL CATEGORY "11" SHEET(S) FOR INTERIOR TRIM DETAILS.
- SEE ARCHITECTURAL DETAIL SHEET "AD" FOR HOUSE SPECIFIC INTERIOR TRIM OPTION TABLE.
- ALL WINDOWS HAVE T-O 1/2" HEADER HEIGHT UNLESS OTHERWISE NOTED.
- ALL CASED OPENINGS AT T-11", UNLESS OTHERWISE NOTED.

**GYPSON NOTES**

**AT GARAGE:**  
 GYPSON BOARD AT COMMON WALLS, CEILINGS, BEAM WRAPS AND SUPPORTS PER STANDARD DETAIL FA-106) FIRE ASSEMBLIES OR AS REQUIRED BY LOCAL CODE.

**AT STAIRS:**  
 1/2" GYPSON BOARD AT UNDERSIDE OF STAIRS AND WALLS IN CLOSET



**FIRST FLOOR PLAN**  
 SCALE: 1/4" = 1'-0"

REV. NO.	DATE	DESCRIPTION	REMARKS
1	08/04/16	TH - DRAWING ALIGNMENT	
2	07/12/17	SLS - T-PLY CONVERSION PROJECT	

NVR, Inc., owner, expressly reserves its common law copyright in these plans. These plans are not to be reproduced, changed, adapted, or otherwise used in any way without the prior written consent of NVR, Inc.

**NVR**  
 NVR, Inc.  
 Architectural Services  
 Architects  
 5285 Washburn Circle  
 Frederick, MD 21703

SET NO. PALOO  
 VERSION 03  
 DRAWN BY  
 DATE:  
 OPTION

**PALERMO**  
 DRAWING TITLE  
 FIRST FLOOR PLAN

OPTION DESCRIPTION

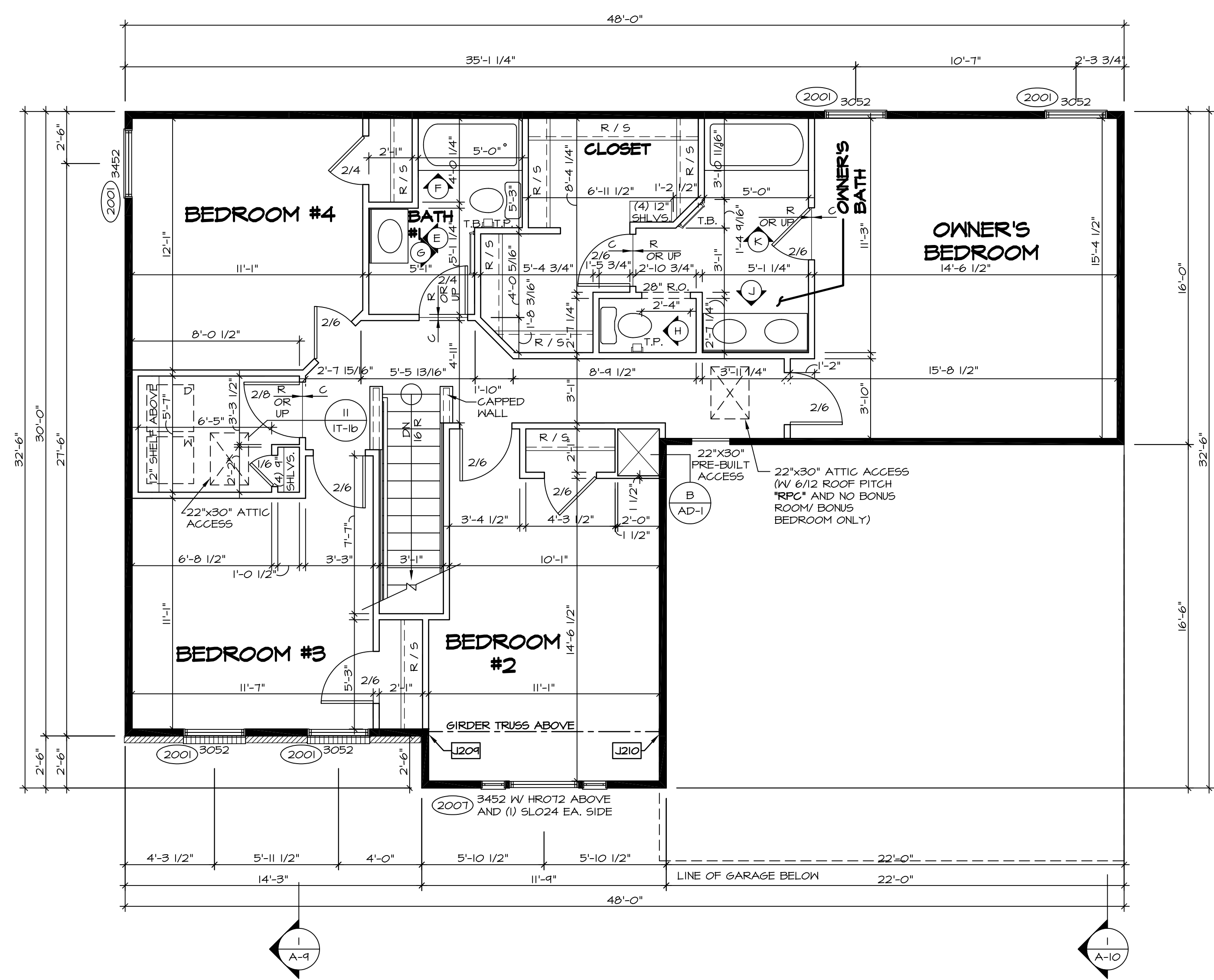
SHEET NO. **A-7**  
 53

C:\NVR\Solves\PALERMO\_PALOO\_03\DCI-YG-K424\515153\Sheets\Lot\_Specific\53 A-7 PLAN\_L5.dwg 08/16/17 - 10:45 am

SECOND FLOOR JACK SCHEDULE				
IDENTIFIER	DESCRIPTION	OPTIONS	ENG. NUM.	REMARKS
J204	JACK - (2) 2X4 SFP#1	ELE	2011	
J210	JACK - (2) 2X4 SFP#1	ELE	2011	

LEGEND	
	BEARING WALL
	NON BEARING WALL
	INDICATES BEARING FROM POINT-LOAD ABOVE
	JACKS
	BEAM/HEADER
	PAD FOOTING
	STEEL COLUMN
	PORTAL FRAME
	JOIST/TRUSS
	LVL
	ENGINEERING PAGE NUMBER

- FLOOR PLAN NOTES**
- ALL HEADERS ARE (2) 2x6 w/ 2x4 WALLS OR (3) 2x6 w/ 2x6 WALLS, UNLESS OTHERWISE NOTED.
  - ALL HEADERS TO HAVE (1) 2x4 OR 2x6 JACK EACH END, UNLESS OTHERWISE NOTED.
  - ALL EXTERIOR WALLS TO BE 4" AND ALL INTERIOR WALLS TO BE 3 1/2", UNLESS OTHERWISE NOTED.
  - HATCHED AREAS INDICATE DROPPED CEILINGS. ALL DROPPED CEILINGS ARE 12" UNLESS OTHERWISE NOTED.
  - SEE "BRACED WALL PANEL DETAIL SHEET" FOR SPECIAL WALL FRAMING LOCATIONS AND HEADER SIZES, IF APPLICABLE.
  - SEE STANDARD DETAIL CATEGORY "IT" SHEET(S) FOR INTERIOR TRIM DETAILS.
  - SEE ARCHITECTURAL DETAIL SHEET "AD" FOR HOUSE SPECIFIC INTERIOR TRIM OPTION TABLE.
  - ALL WINDOWS HAVE 1'-0 1/2" HEADER HEIGHT UNLESS OTHERWISE NOTED.
  - ALL CASED OPENINGS AT 7'-11", UNLESS OTHERWISE NOTED.



**SECOND FLOOR PLAN**  
SCALE: 1/4" = 1'-0"

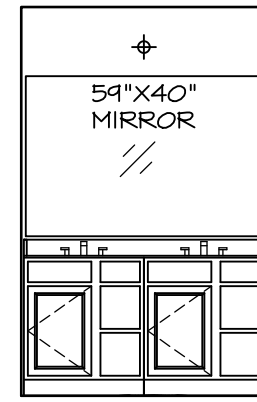
SHEET NO. <b>A-8</b>	MODEL <b>PALERMO</b>	SET NO. <b>PALOO</b>	REVISIONS	DATE	REMARKS
		VERSION <b>03</b>	1	08/04/16	TH - DRAWING ALIGNMENT
OPTION DESCRIPTION <b>60</b>	DRAWING TITLE <b>SECOND FLOOR PLAN</b>	DRAWN BY	2	07/27/17	SLS - T-FPLY CONVERSION PROJECT
		DATE			
		OPTION			

NVR, Inc., owner, expressly reserves its copyright in these plans. These plans are not to be reproduced, changed, copied, or otherwise used in any way without the prior written consent of NVR, Inc.

**NVR**  
NVR, Inc.  
Architectural Services  
Architects  
5285 West  
Frederick, MD 21703

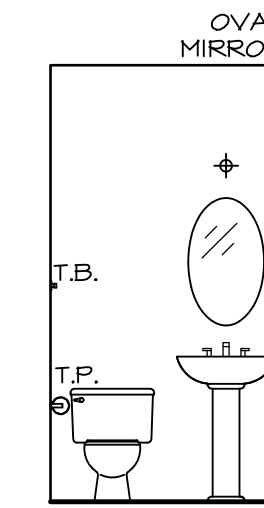
C:\NVR\Solves\PALERMO\_PALOO\_03\DCY-YG-K42\515153\Sheets\1.ctb Specific\_60 A-8 FLN2\_L5.dwg 08/16/17 - 10:45 am





(2) V5DB3034H

**J** OWNER'S BATH  
SCALE: 1/4" = 1'-0"

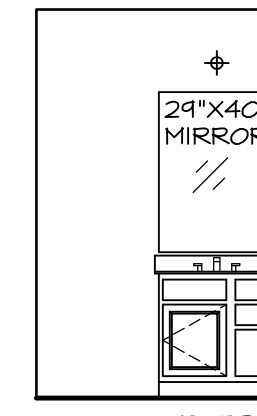


PEDESTAL SINK  
(BY DIVISION)  
WITH OVAL  
MIRROR

**B** POWDER ROOM  
SCALE: 1/4" = 1'-0"

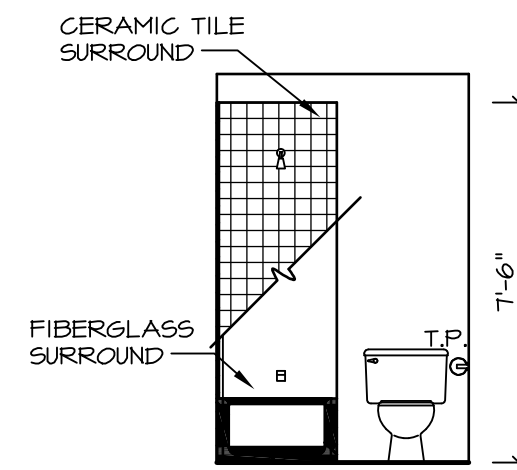


**H** OWNER'S BATH  
SCALE: 1/4" = 1'-0"

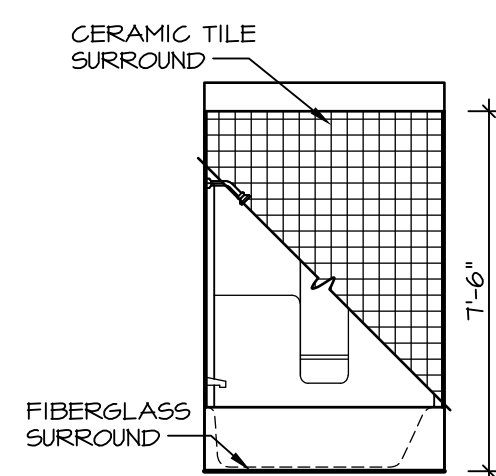


V5DB30

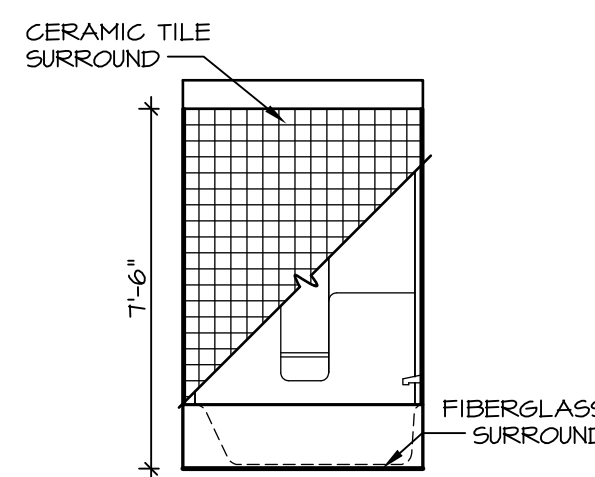
**E** BATH #1  
SCALE: 1/4" = 1'-0"



**G** BATH #1  
SCALE: 1/4" = 1'-0"



**K** OWNER'S BATH  
SCALE: 1/4" = 1'-0"



**F** BATH #1  
SCALE: 1/4" = 1'-0"

**NOTES:**

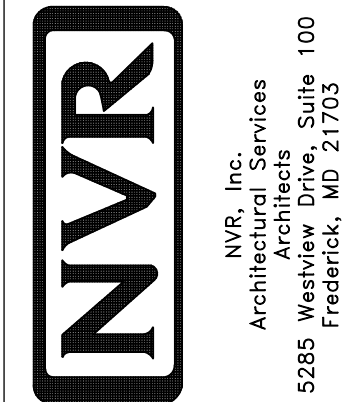
1. TEMPERED GLASS SHOWER ENCLOSURE WITH SWING DOOR OR OPTIONAL SLIDING DOOR BY DIVISION
2. TUB ACCESS PANELS PROVIDED AS NEEDED, ALL MATERIALS BY DIVISION
3. REFER TO SHEET IT-2 FOR TUB AND SHOWER DETAILS.
4. ALL V5DB24-42 DRAWERS TO BE SET ON RIGHT HAND.
5. BATH ELEVATIONS ARE SHOWN PER PLAN.

REMARKS

REV. NO. | DATE | DESCRIPTION

1 | 08/04/16 | TM - DRAWING ALIGNMENT

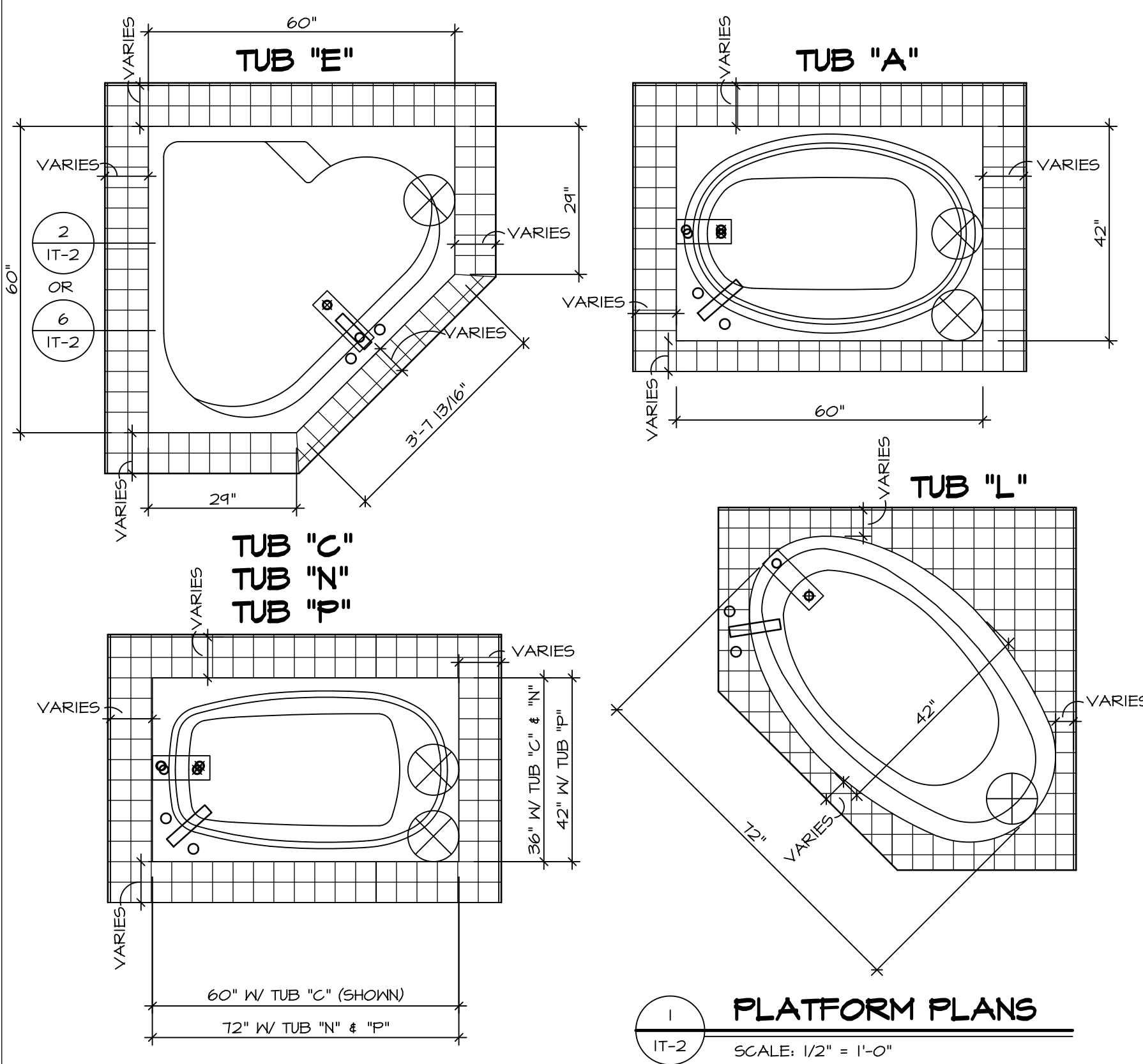
NVR, Inc., owner, expressly reserves its copyright in these plans. These plans are not to be reproduced, changed, copied in any way, or used for any purpose not intended by NVR, Inc. without the written consent of NVR, Inc.



SET NO. PALOO	VERSION 03
DRAWN BY	DATE:
OPTION	OPTION

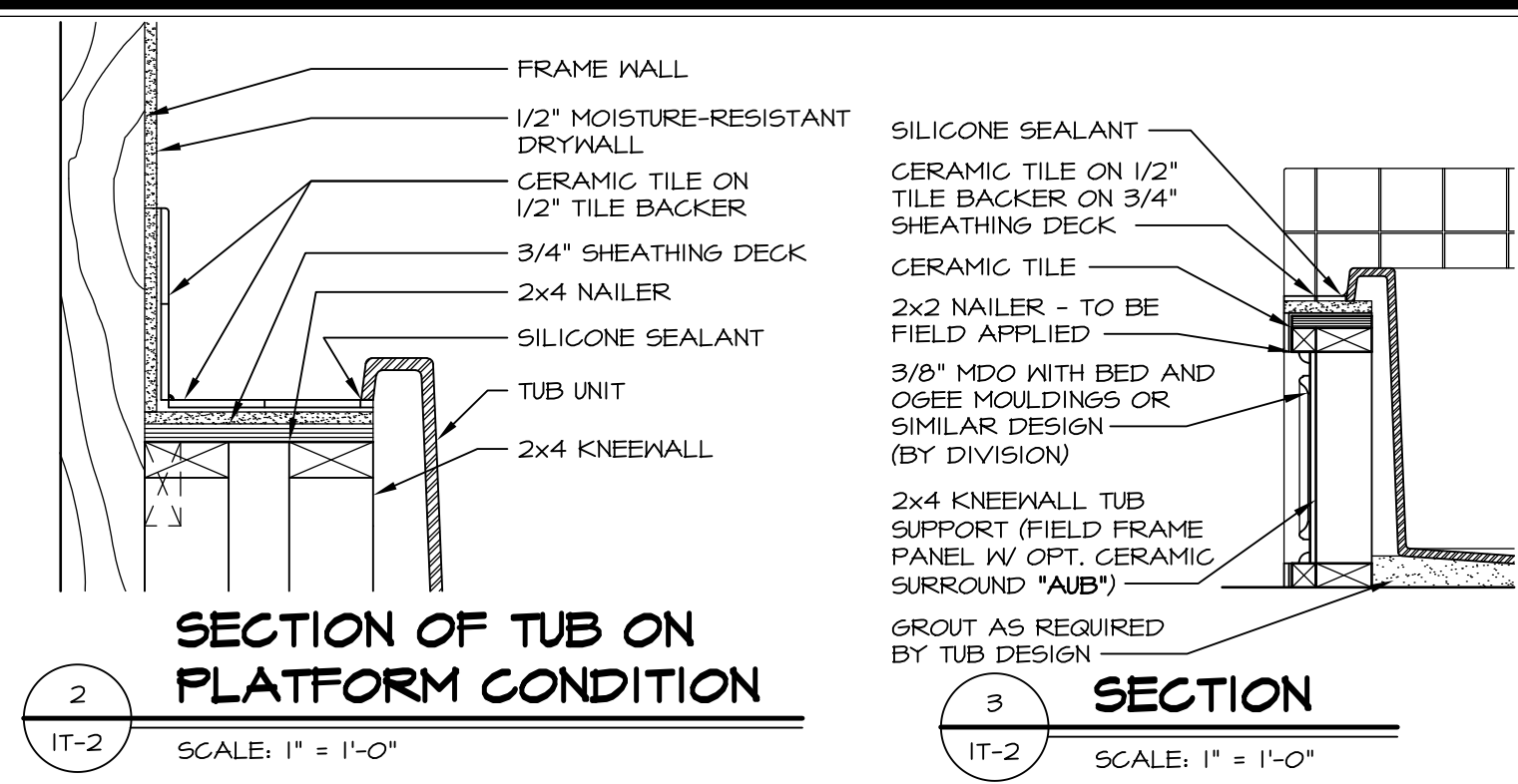
SHEET NO. **A-13**  
MODEL **PALERMO**  
DRAWING TITLE **BATH ELEVATIONS**  
OPTION DESCRIPTION



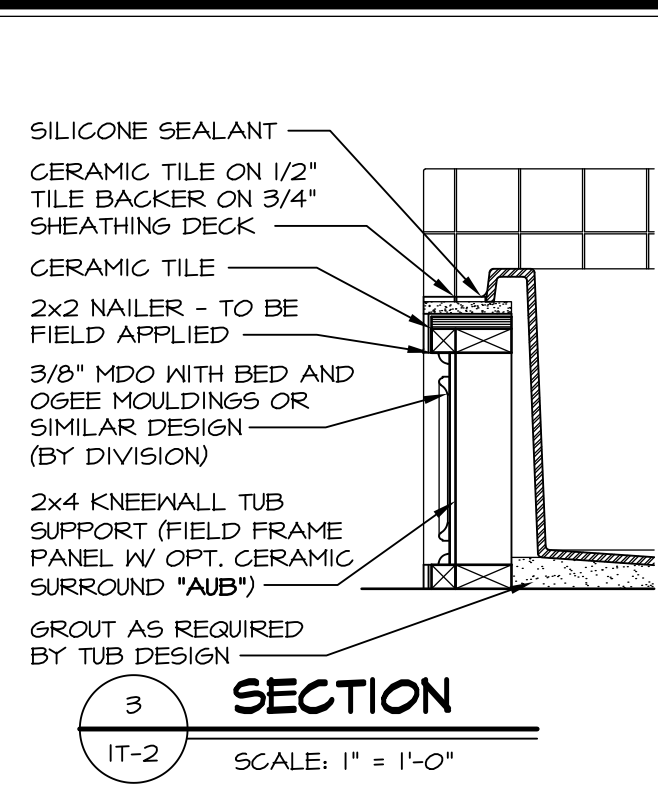


**1 PLATFORM PLANS**  
SCALE: 1/2" = 1'-0"

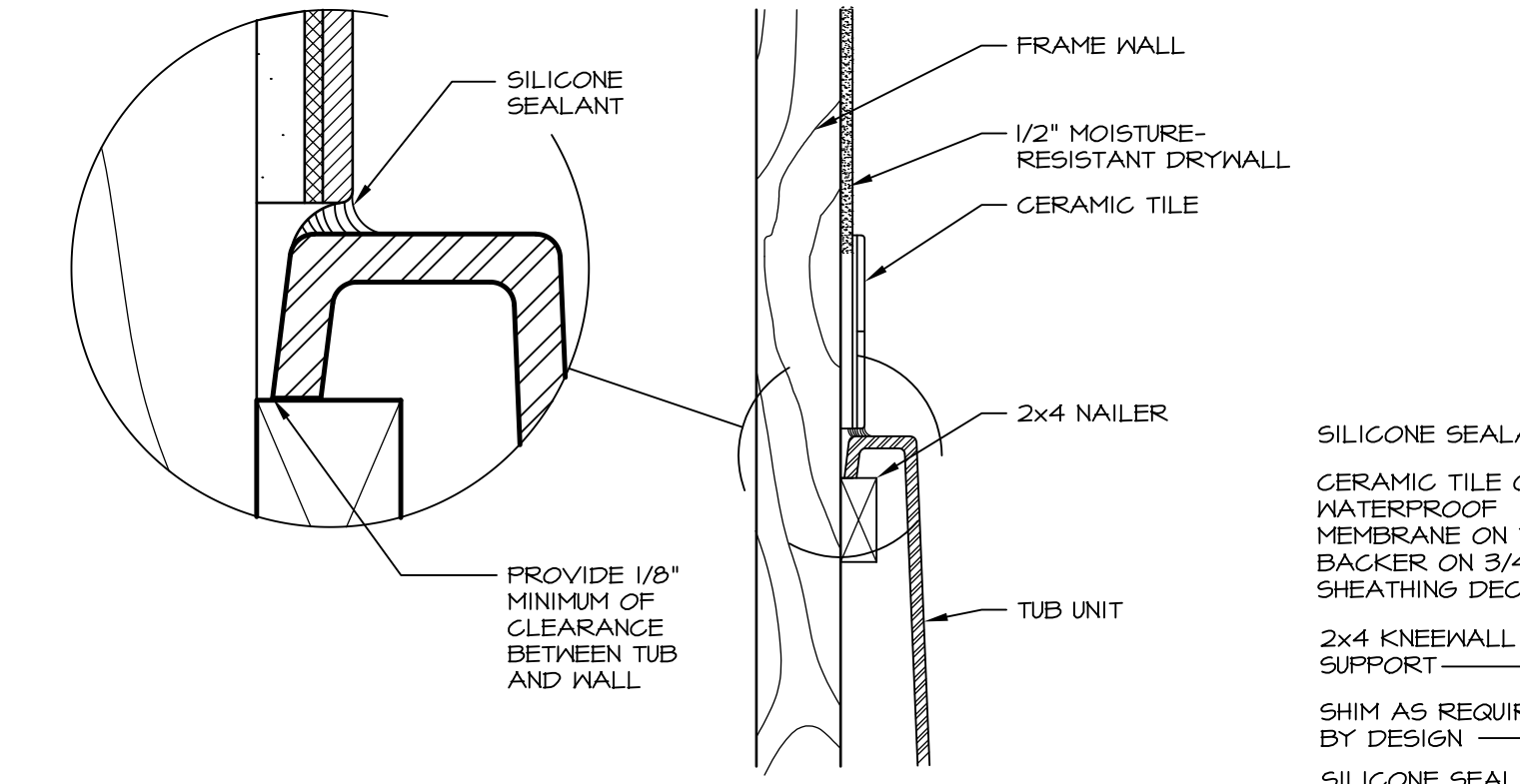
TUB	MANUF.	HEIGHT	WIDTH	LENGTH	TUB DECK PANEL HEIGHT
"A"	KOHLER/ STERLING	18 3/4"	42"	60"	17 1/8"
"C"	KOHLER/ STERLING	18 3/4"	36"	60"	17 1/8"
"E"	KOHLER/ STERLING	19 1/2"	60"	60"	17 7/8"
"L"	KOHLER/ STERLING	18 1/2"	42"	72"	16 7/8"
"N"	KOHLER/ STERLING	18 3/4"	36"	72"	17 1/8"
"P"	KOHLER/ STERLING	18 3/4"	42"	72"	17 1/8"



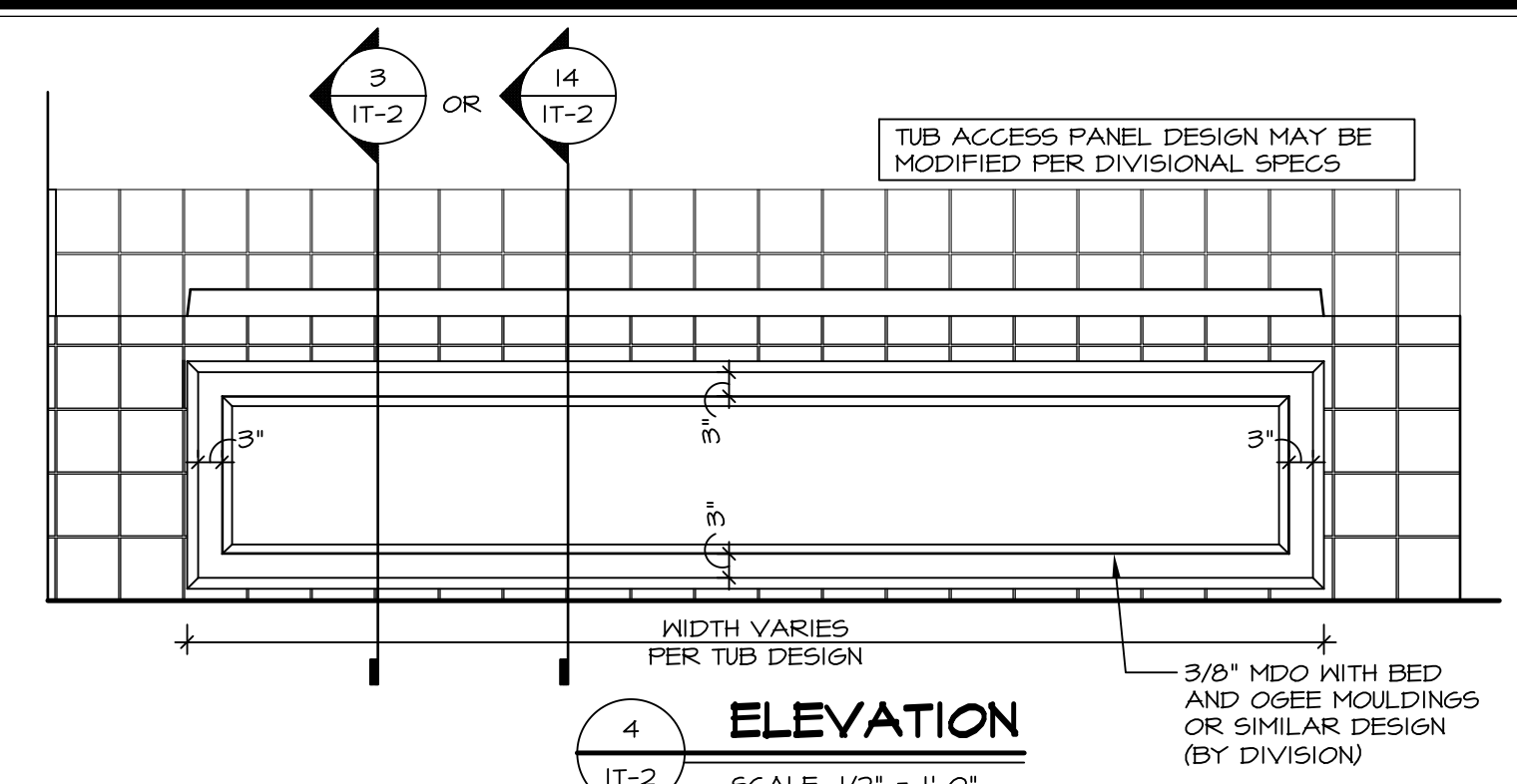
**2 SECTION OF TUB ON PLATFORM CONDITION**  
SCALE: 1" = 1'-0"



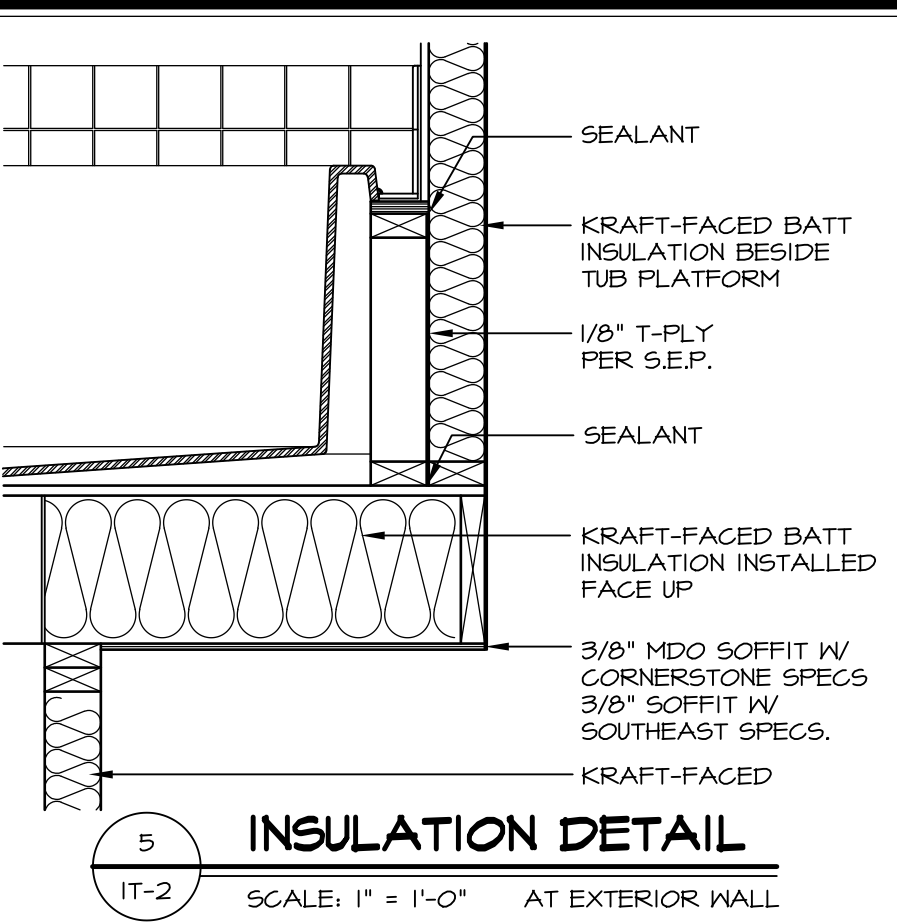
**3 SECTION**  
SCALE: 1" = 1'-0"



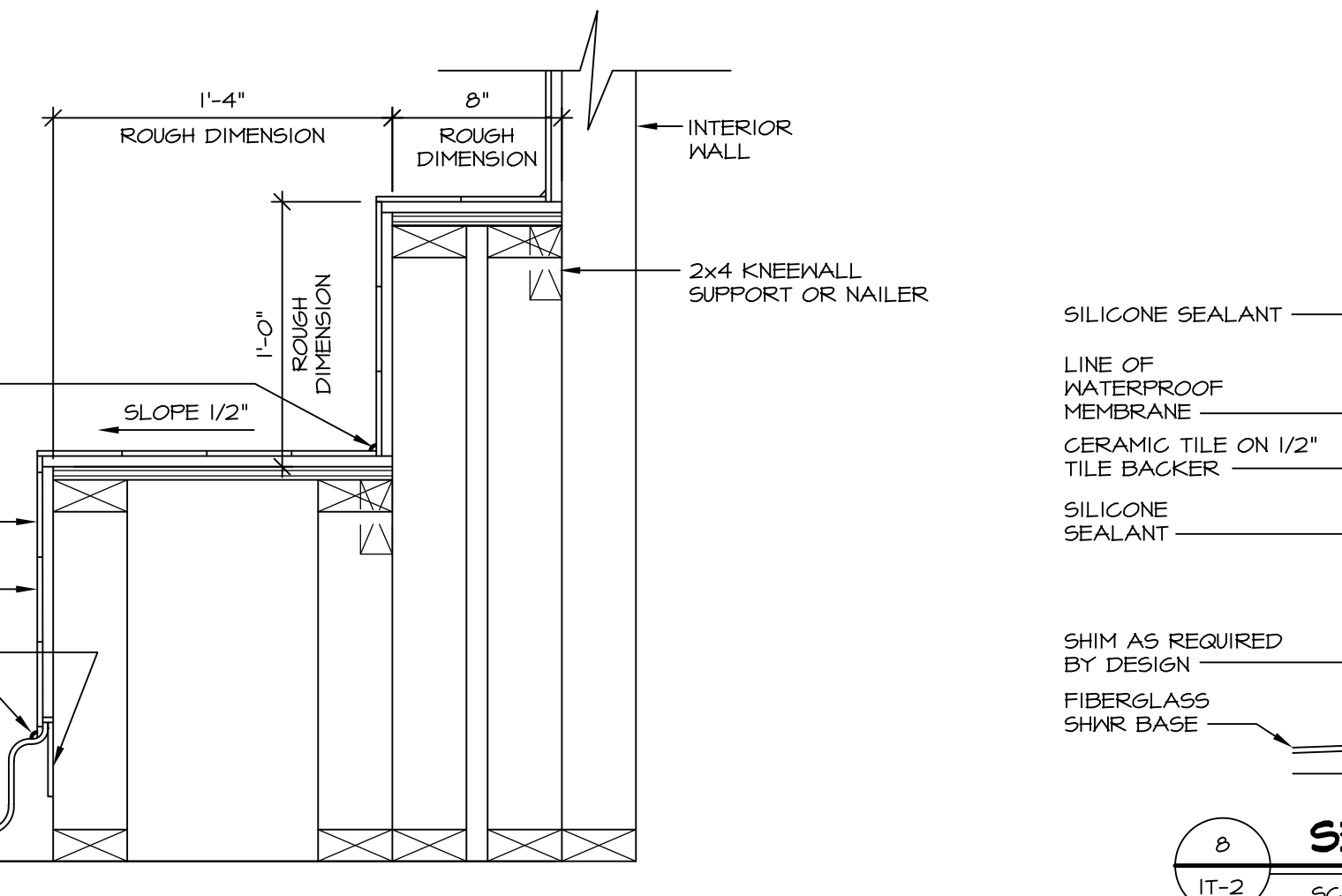
**6 SECTION OF TUB TO WALL CONDITION**  
SCALE: 1 1/2" = 1'-0"



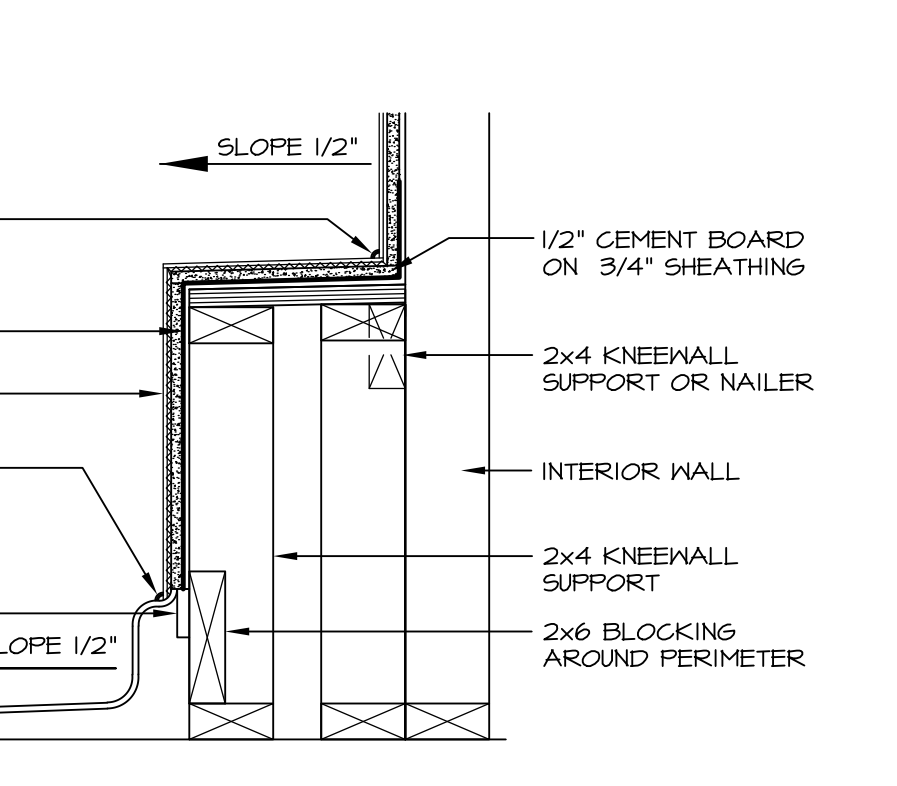
**4 ELEVATION**  
SCALE: 1/2" = 1'-0"



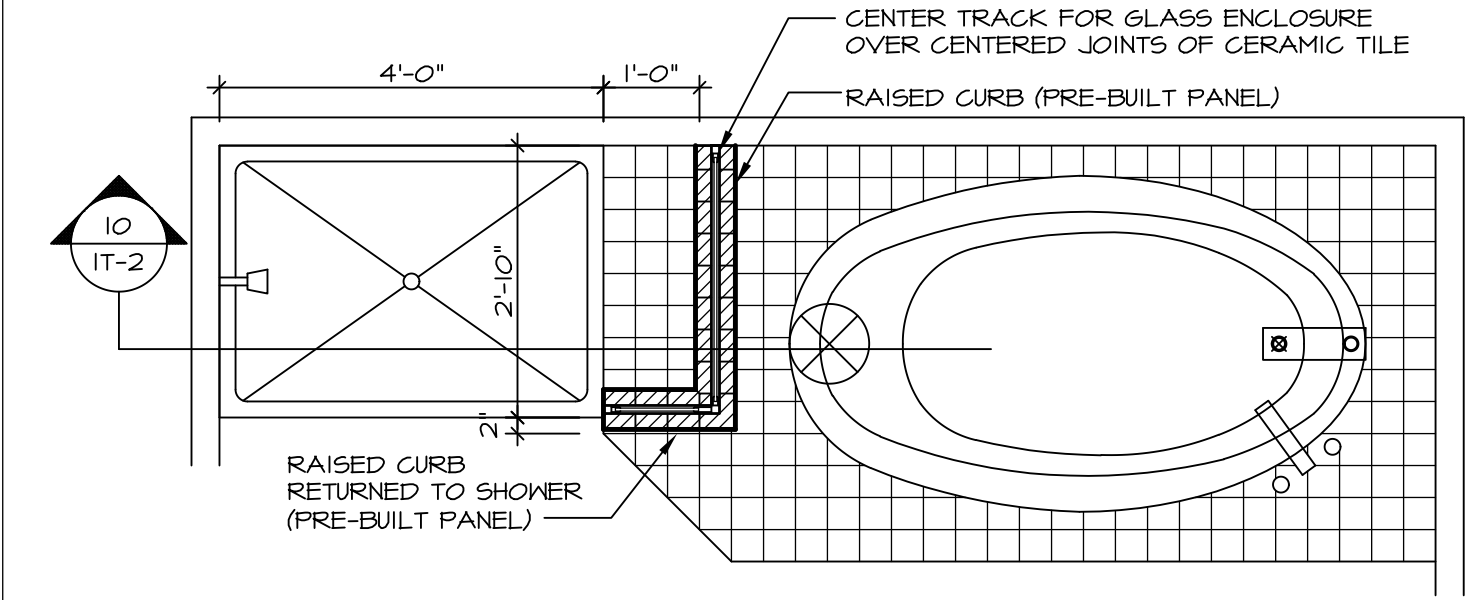
**5 INSULATION DETAIL**  
SCALE: 1" = 1'-0" AT EXTERIOR WALL



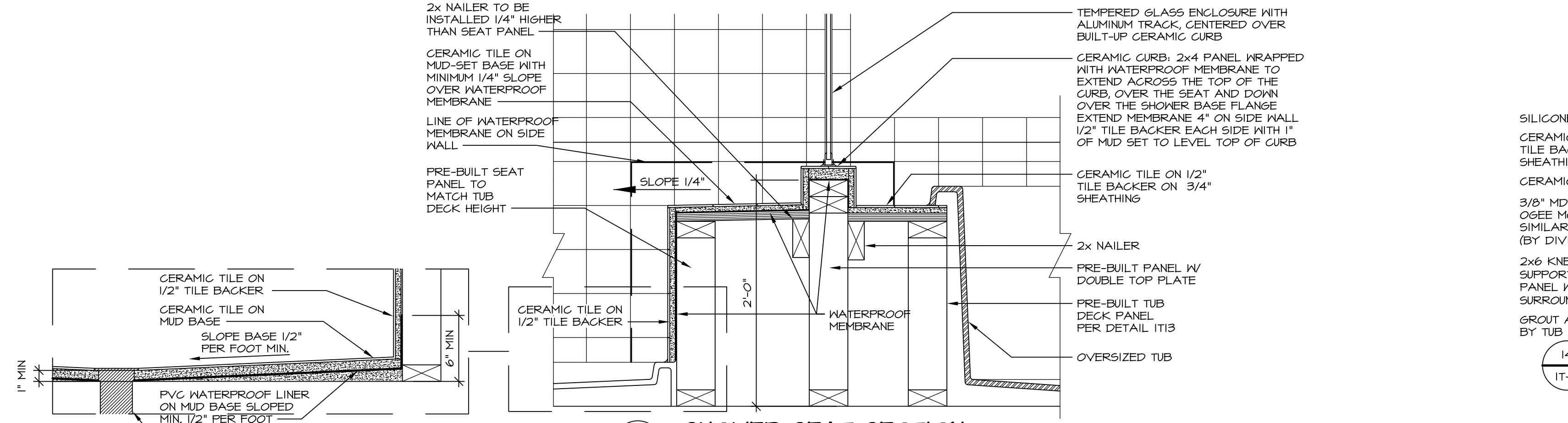
**7 SECTION OF SHOWER SEAT AND SHELF**  
SCALE: 1 1/2" = 1'-0"



**8 SECTION OF SHOWER SEAT**  
SCALE: 1-1/2" = 1'-0" FIBERGLASS SHOWER BASE



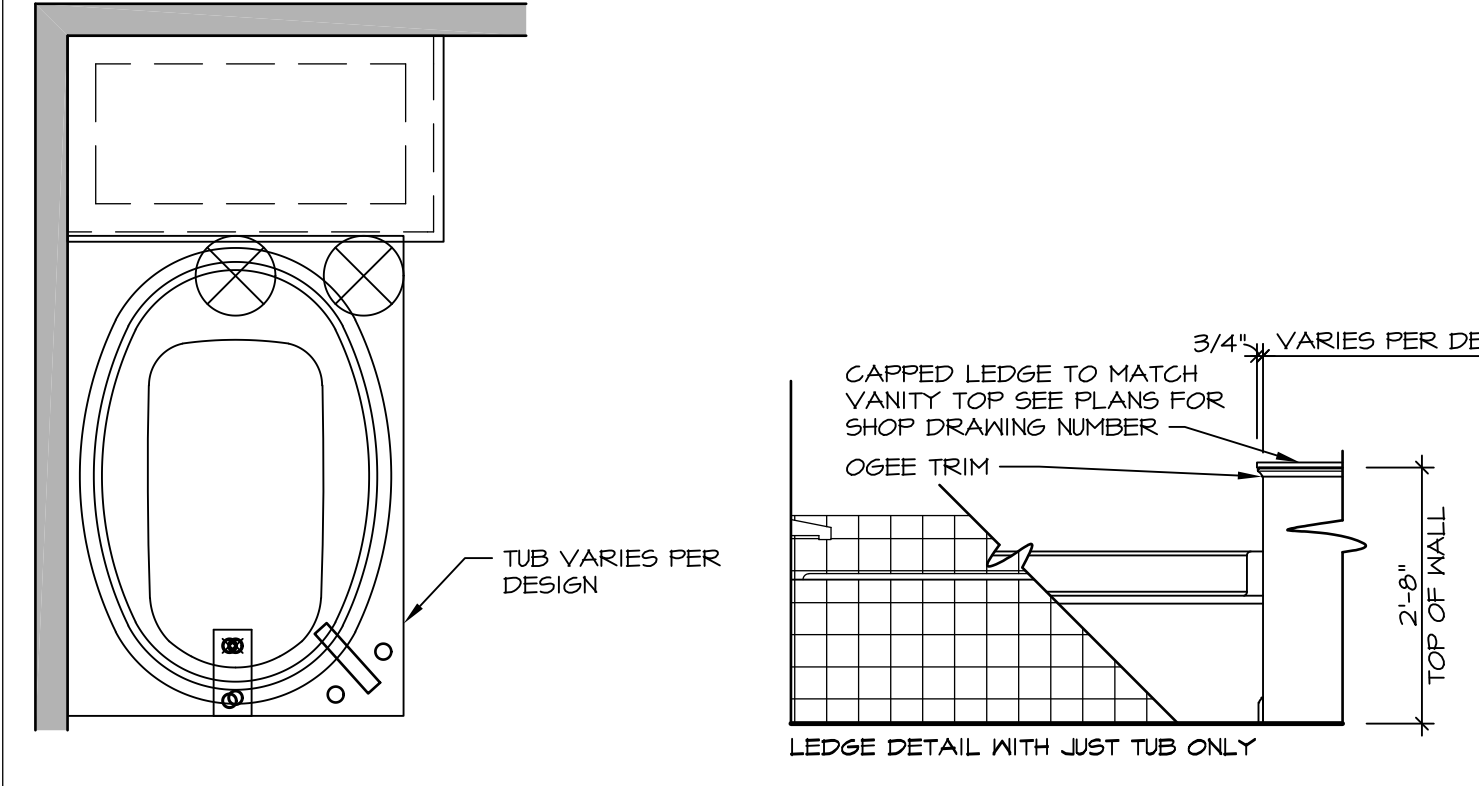
**9 SHOWER SEAT PLAN / DETAIL**  
SCALE: 1/2" = 1'-0"



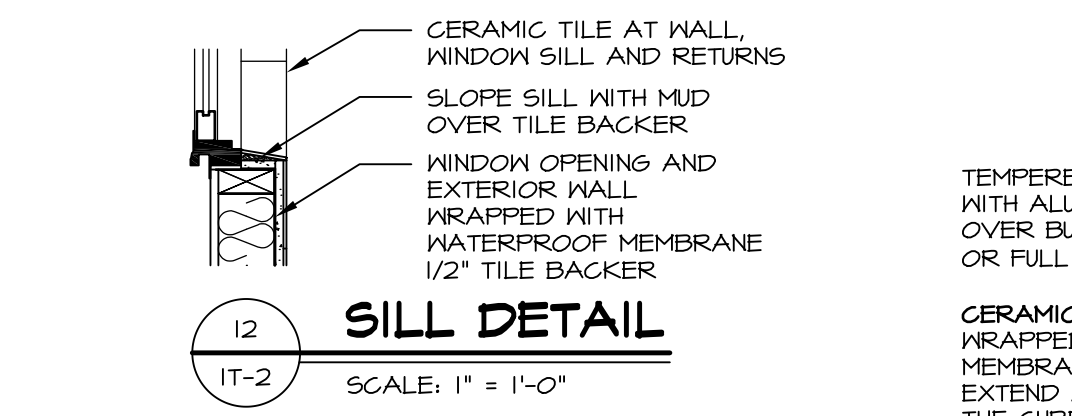
**10 SHOWER SEAT SECTION**  
SCALE: 1-1/2" = 1'-0"



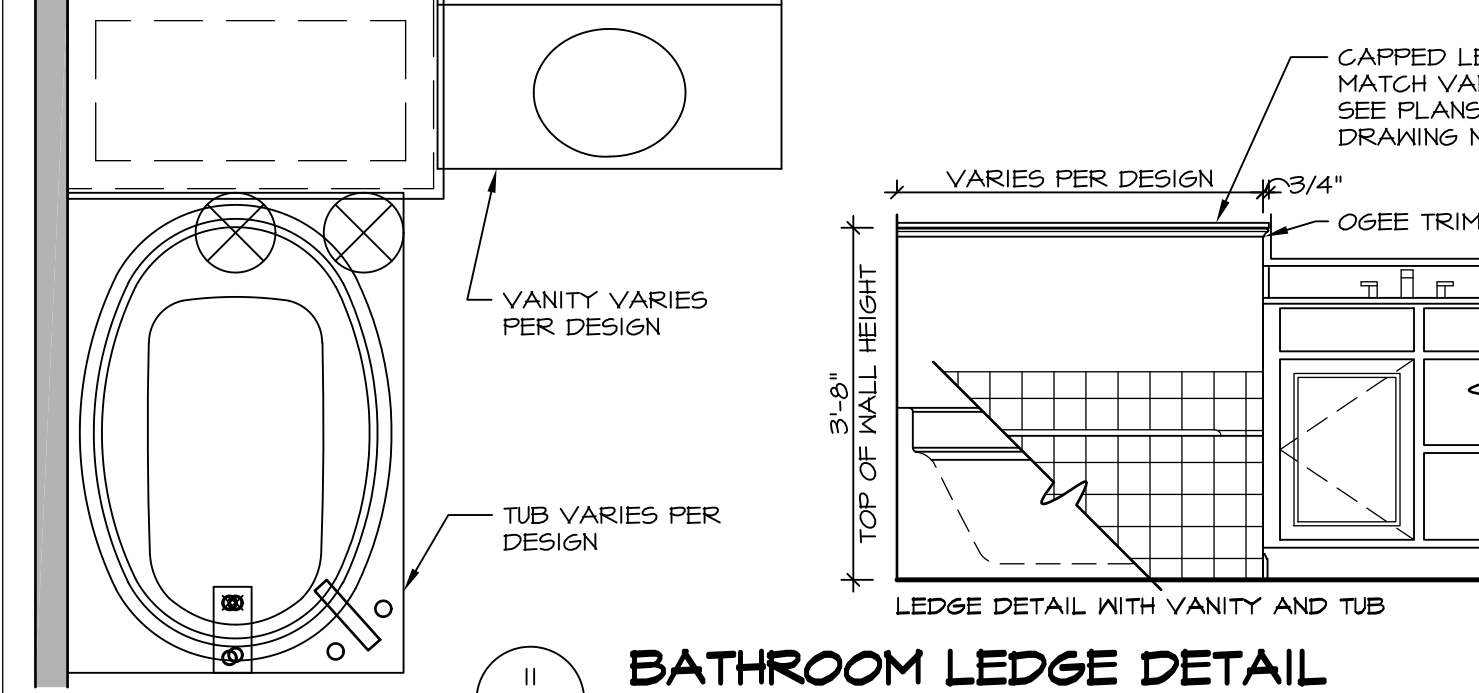
**11 ALTERNATE SHOWER PAN DETAIL**



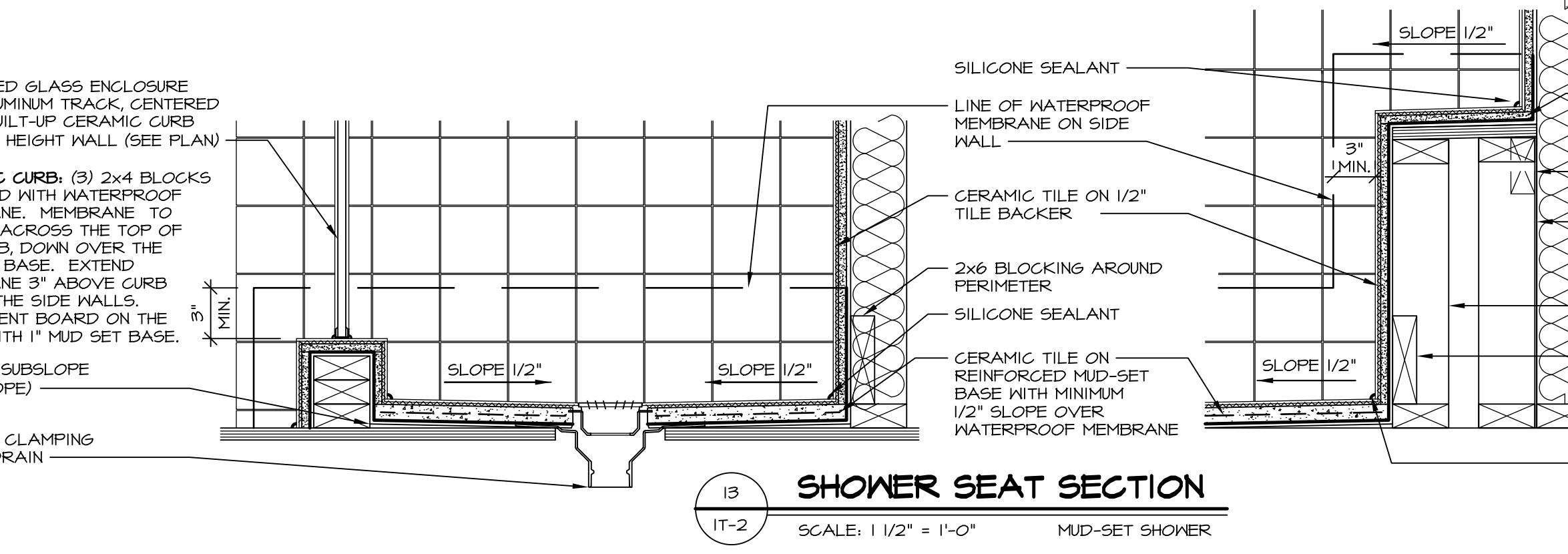
**12 BATHROOM LEDGE DETAIL**  
SCALE: 1" = 1'-0"



**13 SILL DETAIL**  
SCALE: 1" = 1'-0"



**14 BATHROOM LEDGE DETAIL**  
SCALE: 1/2" = 1'-0"



**13 SHOWER SEAT SECTION**  
SCALE: 1 1/2" = 1'-0" MUD-SET SHOWER

REVISIONS

REV. NO.	DATE	DESCRIPTION
1	5/11/17	ISSUE FOR PERMIT
2	5/11/17	ISSUE FOR PERMIT
3	5/11/17	ISSUE FOR PERMIT
4	5/11/17	ISSUE FOR PERMIT
5	5/11/17	ISSUE FOR PERMIT
6	5/11/17	ISSUE FOR PERMIT
7	5/11/17	ISSUE FOR PERMIT
8	5/11/17	ISSUE FOR PERMIT
9	5/11/17	ISSUE FOR PERMIT
10	5/11/17	ISSUE FOR PERMIT
11	5/11/17	ISSUE FOR PERMIT
12	5/11/17	ISSUE FOR PERMIT
13	5/11/17	ISSUE FOR PERMIT
14	5/11/17	ISSUE FOR PERMIT

REMARKS

1. REMOVE TUB ACCESS PANEL REF. (085 #15 8414)

2. REVISED DETAIL 1 AND 11 TO REMOVE TUB ACCESS PANEL REF. (085 #15 8414)

3. REVISED DETAIL 1 AND 11 TO REMOVE TUB ACCESS PANEL REF. (085 #15 8414)

4. REVISED DETAIL 1 AND 11 TO REMOVE TUB ACCESS PANEL REF. (085 #15 8414)

5. REVISED DETAIL 1 AND 11 TO REMOVE TUB ACCESS PANEL REF. (085 #15 8414)

6. REVISED DETAIL 1 AND 11 TO REMOVE TUB ACCESS PANEL REF. (085 #15 8414)

7. REVISED DETAIL 1 AND 11 TO REMOVE TUB ACCESS PANEL REF. (085 #15 8414)

8. REVISED DETAIL 1 AND 11 TO REMOVE TUB ACCESS PANEL REF. (085 #15 8414)

9. REVISED DETAIL 1 AND 11 TO REMOVE TUB ACCESS PANEL REF. (085 #15 8414)

10. REVISED DETAIL 1 AND 11 TO REMOVE TUB ACCESS PANEL REF. (085 #15 8414)

11. REVISED DETAIL 1 AND 11 TO REMOVE TUB ACCESS PANEL REF. (085 #15 8414)

12. REVISED DETAIL 1 AND 11 TO REMOVE TUB ACCESS PANEL REF. (085 #15 8414)

13. REVISED DETAIL 1 AND 11 TO REMOVE TUB ACCESS PANEL REF. (085 #15 8414)

14. REVISED DETAIL 1 AND 11 TO REMOVE TUB ACCESS PANEL REF. (085 #15 8414)

SET NO. NVR  
VERSION  
DRAWN BY  
DATE  
OPTION

**STANDARD DETAILS**  
DRAWING TITLE  
INTERIOR TRIM DETAILS  
BATH DETAILS  
OPTION DESCRIPTION

**IT-2**

NVR, Inc., owner, expressly reserves its common law copyright and other property rights in these plans. These plans are not to be copied, reproduced, or otherwise used in any way without the express written consent of NVR, Inc.

**NVR**  
NVR, Inc.  
Architectural Services  
5285 Westpark Drive  
Frederick, MD 21703

C:\Users\epeterson\AppData\Local\Temp\Temp\Pub\8156\IT2.dwg 08/10/17 1:52 pm