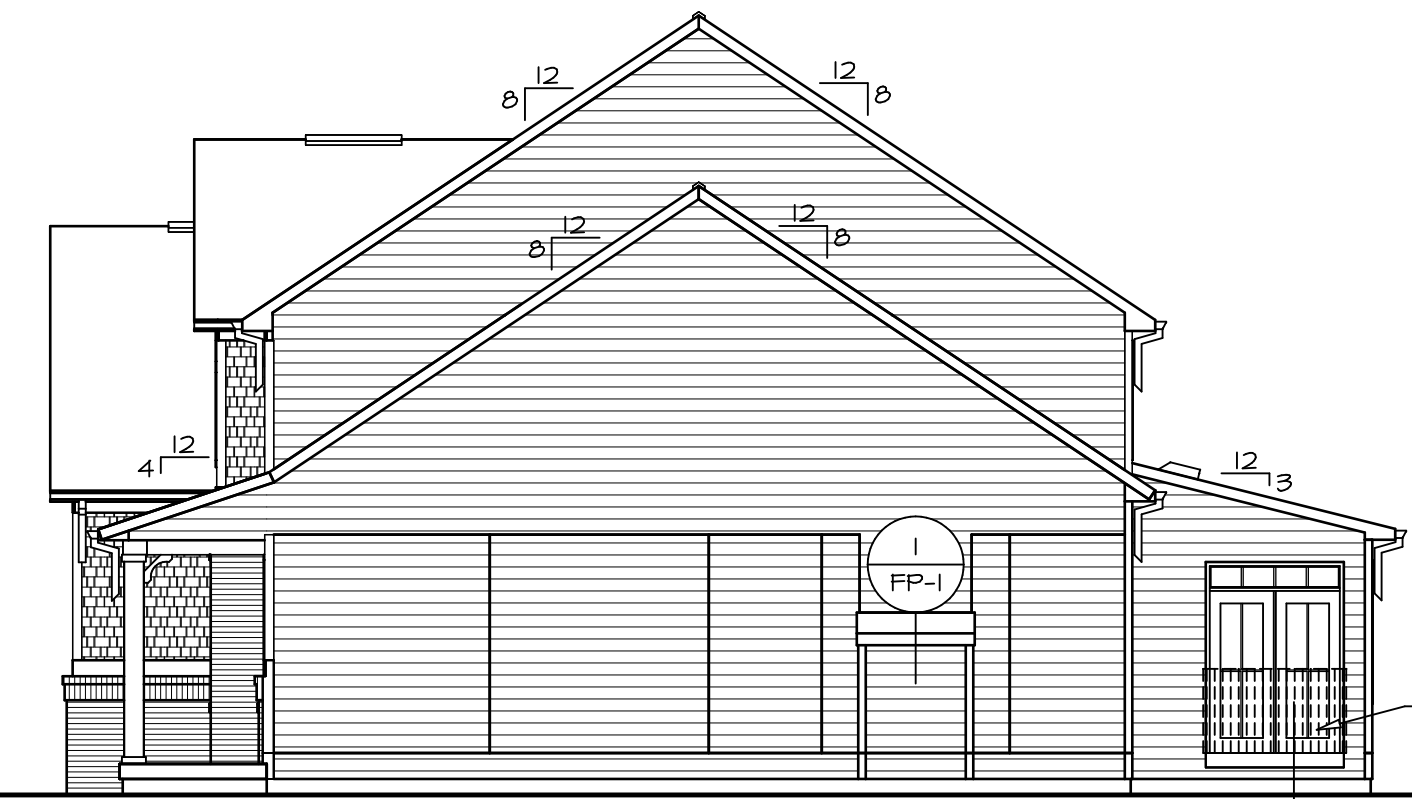


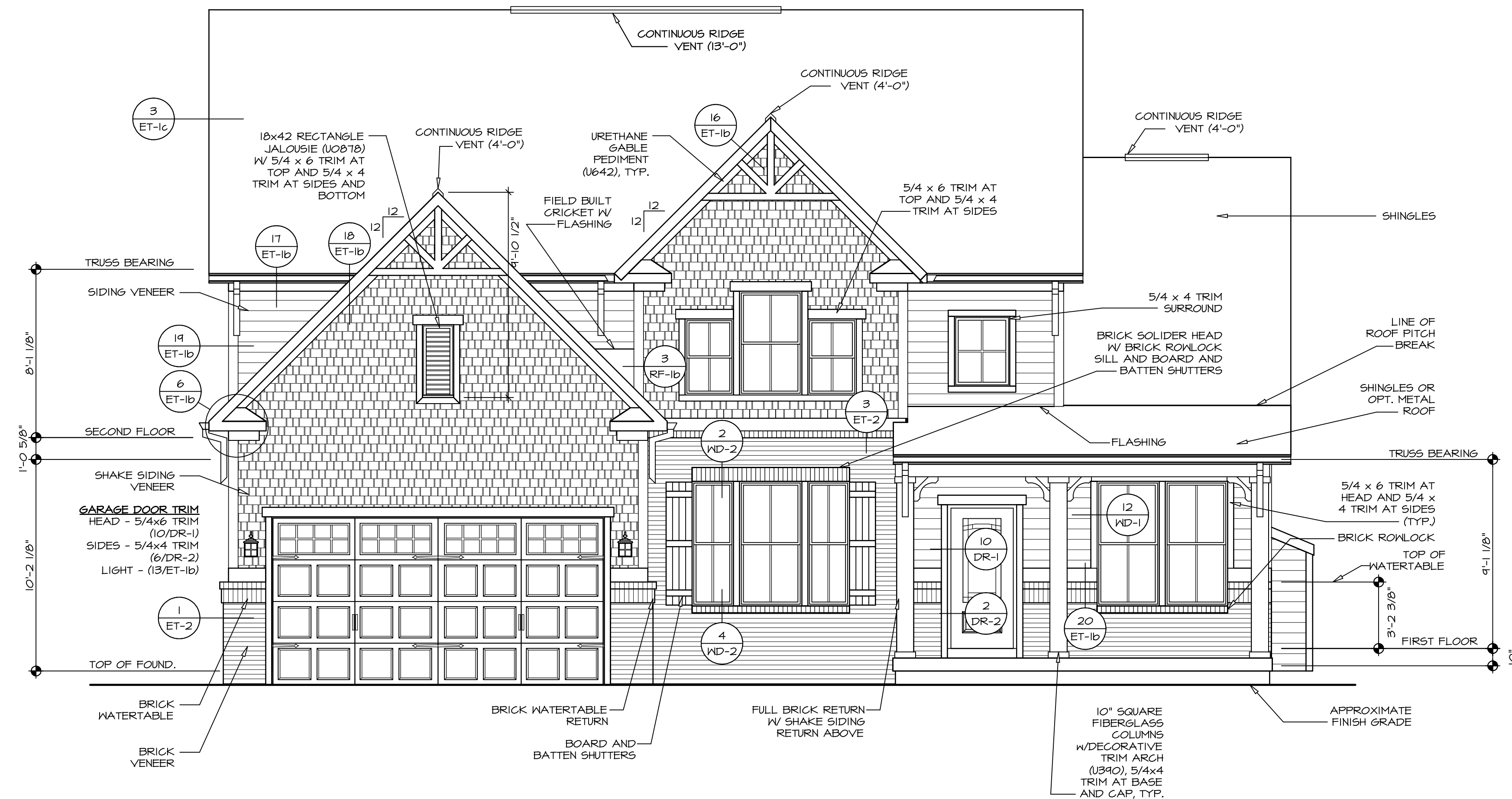
4 **LEFT ELEVATION**
A-1 SCALE: 1/8" = 1'-0"



3 **REAR ELEVATION**
A-1 SCALE: 1/8" = 1'-0"

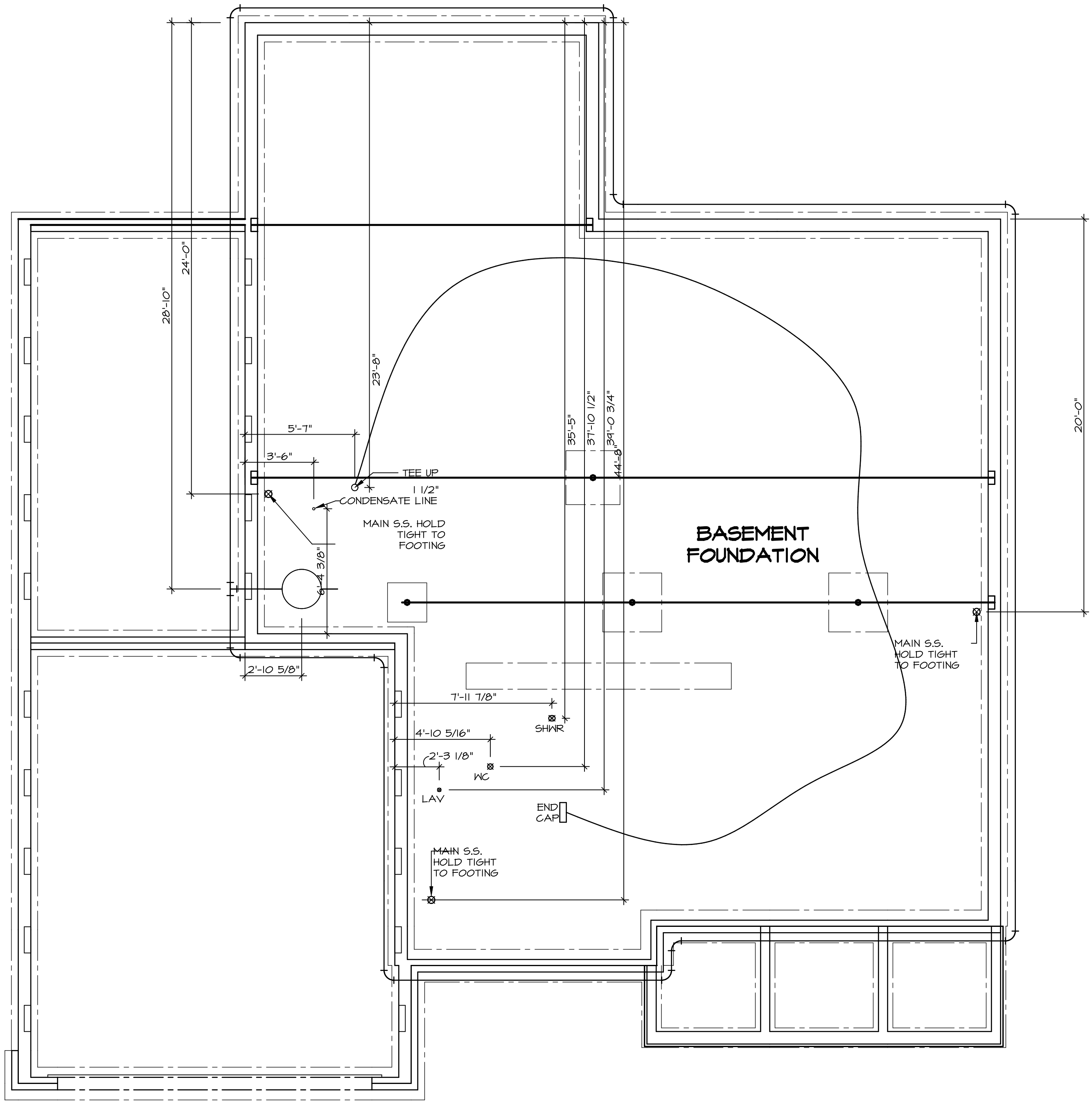


2 **RIGHT ELEVATION**
A-1 SCALE: 1/8" = 1'-0"



FRONT ELEVATION "K"
SCALE: 1/4" = 1'-0"

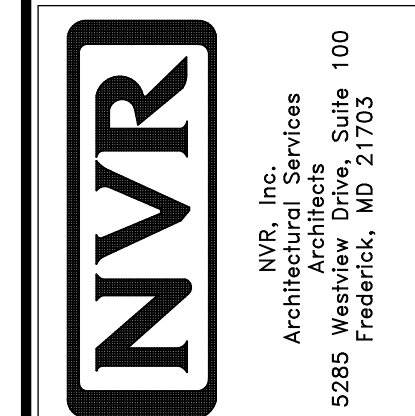
| | | | |
|--------------------|--------------------------|---|---|
| SHEET NO. | A-1 | 5 | REMARKS |
| MODEL | BATEMAN | | |
| DRAWING TITLE | ELEVATIONS | | |
| OPTION DESCRIPTION | FULL BASEMENT FOUNDATION | | |
| SET NO. | BAT00 | | |
| VERSION | 03 | | |
| DRAWN BY | | | |
| DATE | | | |
| OPTION | FBA | | |
| | | | NVR, Inc. owner, expressly reserves its copyright and all other rights in this drawing. No part of this drawing may be reproduced, stored in a retrieval system, or transmitted in any form or by any means, without the prior written consent of NVR, Inc. |
| | | | NVR, Inc. Architects Suite 100 5285 West Fredericka, MD 21703 |



PLUMBING PLAN
SCALE: 1/4" = 1'-0"

| SHEET NO. | MODEL | SET NO. | REV. NO. | DATE | REMARKS |
|------------|--|--|----------|------|---------|
| A-5 | BATEMAN DRAWING TITLE PLUMBING PLAN | BAT00 VERSION 03 DRAWN BY DATE: OPTION | | | |
| 42 | OPTION DESCRIPTION | | | | |

NVR, Inc., owner, expressly reserves its copyright in these plans. These plans are not to be reproduced, changed, copied, or otherwise used in any way without the prior written consent of NVR, Inc.



FLOOR PLAN NOTES

1. ALL HEADERS ARE (2) 2x6 w/ 2x4 WALLS OR (3) 2x6 w/ 2x6 WALLS, UNLESS OTHERWISE NOTED.
2. ALL HEADERS TO HAVE (1) 2x4 OR 2x6 JACK EACH END, UNLESS OTHERWISE NOTED.
3. ALL EXTERIOR WALLS TO BE 4" AND ALL INTERIOR WALLS TO BE 3 1/2", UNLESS OTHERWISE NOTED.
4. HATCHED AREAS INDICATE DROPPED CEILINGS. ALL DROPPED CEILINGS ARE 12" UNLESS OTHERWISE NOTED.
5. SEE "BRACED WALL PANEL DETAIL SHEET" FOR SPECIAL WALL FRAMING LOCATIONS AND HEADER SIZES, IF APPLICABLE.
6. SEE STANDARD DETAIL CATEGORY "IT" SHEET(S) FOR INTERIOR TRIM DETAILS.
7. SEE ARCHITECTURAL DETAIL SHEET "AD" FOR HOUSE SPECIFIC INTERIOR TRIM OPTION TABLE.
8. ALL WINDOWS HAVE T-O 1/2" HEADER HEIGHT UNLESS OTHERWISE NOTED.

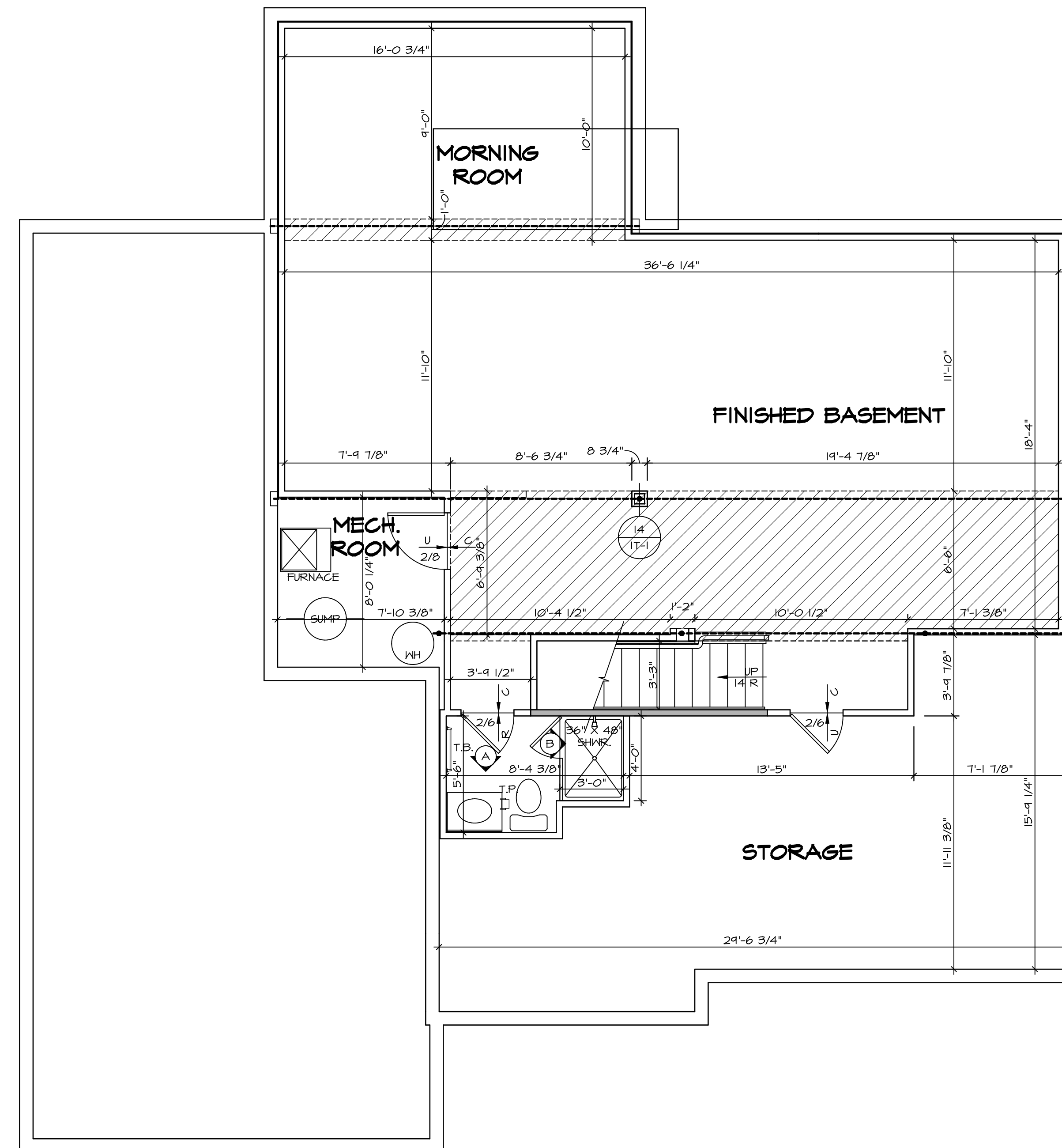
GYPSTUM NOTES

AT GARAGE:
 GYPSUM BOARD AT COMMON WALLS, CEILING, BEAM WRAPS AND SUPPORTS PER STANDARD DETAIL FA-1(b) FIRE ASSEMBLIES OR AS REQUIRED BY LOCAL CODE.

AT STAIRS:
 1/2" GYPSUM BOARD AT UNDERSIDE OF STAIRS AND WALLS IN CLOSET

LEGEND

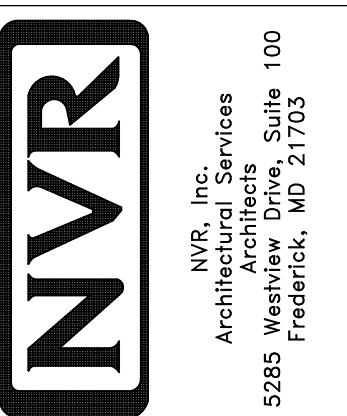
- BEARING WALL
 - NON BEARING WALL
 - INDICATES BEARING FROM POINT-LOAD ABOVE JACKS
 - BEAM/HEADER
 - PAD FOOTING
 - STEEL COLUMN
 - PORTAL FRAME
 - JOIST/TRUSS
 - LVL
 - ENGINEERING PAGE NUMBER
- SEE FC DETAILS FOR FRAMING CONNECTORS



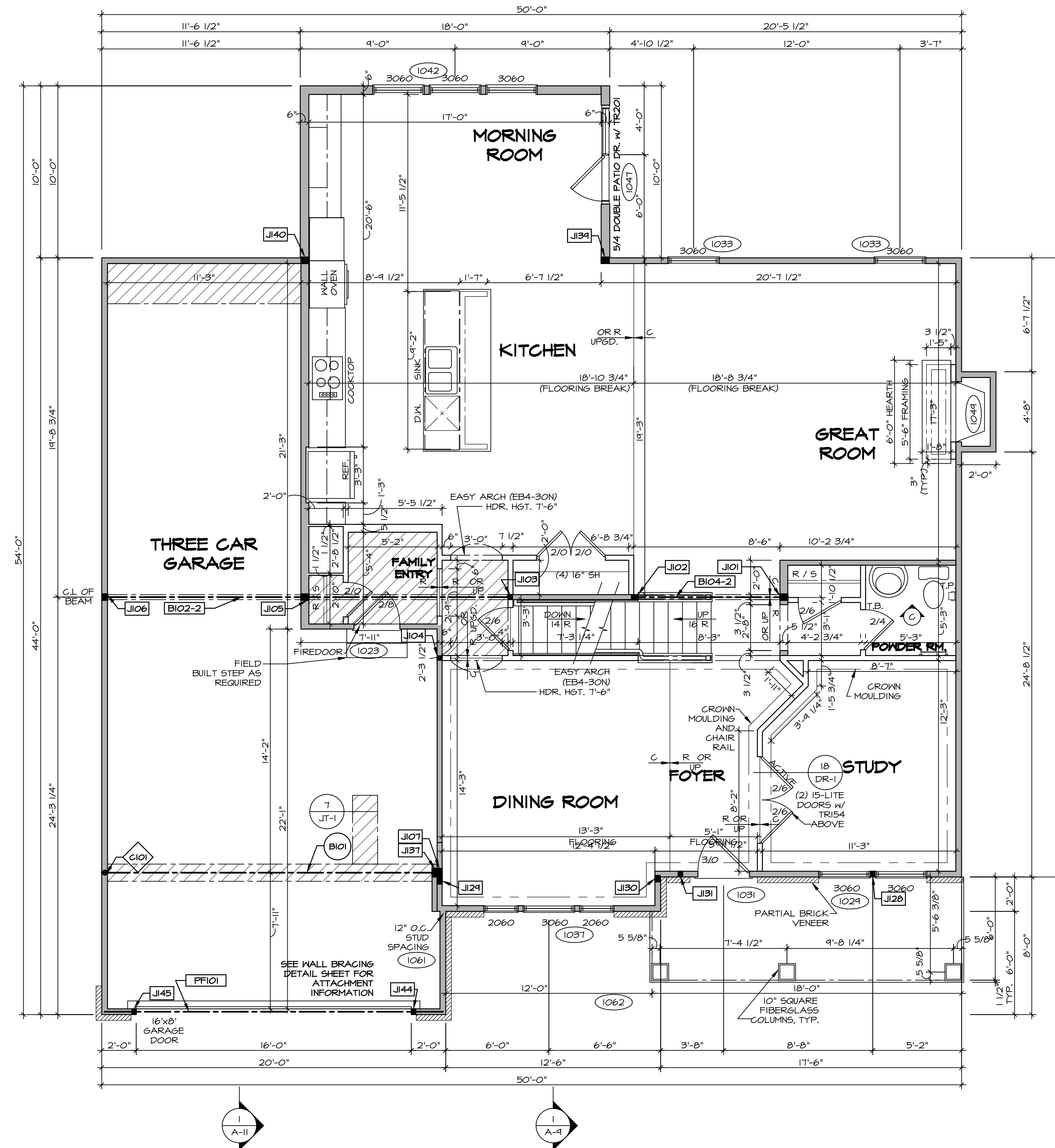
BASEMENT FLOOR PLAN
 SCALE: 1/4" = 1'-0"

| REV. NO. | DATE | REMARKS |
|----------|------|---------|
| | | |
| | | |
| | | |

NVR, Inc., owner, expressly reserves its copyright in these plans. These plans are not to be reproduced, changed, copied in any way, or used for any other project, without the written consent of NVR, Inc.



| | |
|----------------------------|----------------|
| MODEL | SET NO. BATOOC |
| BATEMAN | VERSION 03 |
| DRAWING TITLE | DRAWN BY |
| BASEMENT FLOOR PLAN | DATE: |
| OPTION DESCRIPTION | OPTION |
| A-6 | |
| 46 | |



FIRST FLOOR PLAN
 SCALE: 1/4" = 1'-0"

| LEGEND | |
|----------|---|
| [Line] | BEARING WALL |
| [Line] | NON BEARING WALL |
| [Symbol] | INDICATES BEARING FROM POINT-LOAD ABOVE |
| [Symbol] | JACKS |
| [Symbol] | BEAM/HEADER |
| [Symbol] | PAD FOOTING |
| [Symbol] | STEEL COLUMN |
| [Symbol] | PORTAL FRAME |
| [Symbol] | JOIST/TRUSS |
| [Symbol] | LVL |
| [Symbol] | ENGINEERING PAGE NUMBER |
| [Symbol] | SEE FC DETAILS FOR FRAMING CONNECTORS |

- FLOOR PLAN NOTES**
- ALL HEADERS ARE (2) 2x6 W/ 2x4 WALLS OR (3) 2x6 W/ 2x6 WALLS, UNLESS OTHERWISE NOTED.
 - ALL HEADERS TO HAVE (1) 2x4 OR 2x6 JACK EACH END, UNLESS OTHERWISE NOTED.
 - ALL EXTERIOR WALLS TO BE 4" AND ALL INTERIOR WALLS TO BE 3 1/2", UNLESS OTHERWISE NOTED.
 - HATCHED AREAS INDICATE DROPPED CEILINGS. ALL DROPPED CEILINGS ARE 12" UNLESS OTHERWISE NOTED.
 - SEE "BRACED WALL PANEL DETAIL SHEET" FOR SPECIAL WALL FRAMING LOCATIONS AND HEADER SIZES, IF APPLICABLE.
 - SEE STANDARD DETAIL CATEGORY "11" SHEET(S) FOR INTERIOR TRIM DETAILS.
 - SEE ARCHITECTURAL DETAIL SHEET "AD" FOR HOUSE SPECIFIC INTERIOR TRIM OPTION TABLE.
 - ALL WINDOWS HAVE 7'-0 1/2" HEADER HEIGHT UNLESS OTHERWISE NOTED.

GYPSON NOTES

AT GARAGE:
 GYPSUM BOARD AT COMMON WALLS, CEILING, BEAM WRAPS AND SUPPORTS PER STANDARD DETAIL FA-10) FIRE ASSEMBLIES OR AS REQUIRED BY LOCAL CODE.

AT STAIRS:
 1/2" GYPSUM BOARD AT UNDERSIDE OF STAIRS AND WALLS IN CLOSET

LVL PLY TO PLY FASTENING SCHEDULE: (WHERE APPLICABLE BASED ON LVL USAGE)

1.A - (2) FLY UP TO AND INCLUDING 11 7/8" TALL; FASTEN PLYS W/ (2) ROWS 16D NAILS AT 12" O.C.
 2.A - (2) FLY 14" TO AND INCLUDING 18" TALL (INCLUSIVE); FASTEN PLYS W/ (3) ROWS 16D NAILS AT 12" O.C.
 3.A - (2) FLY 20" TALL AND OVER; FASTEN PLYS W/ (4) ROWS 16D NAILS AT 12" O.C.
 4.A - (3) FLY UP TO AND INCLUDING 11 7/8" TALL; FASTEN PLYS W/ (2) ROWS 16D NAILS AT 12" O.C. FROM EACH SIDE
 5.A - (3) FLY 14" TO AND INCLUDING 18" TALL (INCLUSIVE); FASTEN PLYS W/ (3) ROWS 16D NAILS AT 12" O.C. FROM EACH SIDE
 6.A - (3) FLY 20" TALL AND OVER; FASTEN PLYS W/ (4) ROWS 16D NAILS AT 12" O.C. FROM EACH SIDE
 7.A - (4) FLY (ALL SIZES); FASTEN PLYS W/ (2) ROWS 1/2" DIAMETER A307 BOLTS AT 24" O.C. SEE SHOP DRAWING FOR ADDITIONAL INFORMATION.

| FIRST FLOOR JACK SCHEDULE | | | |
|---------------------------|-------------------------------|---------|-----------|
| IDENTIFIER | DESCRIPTION | OPTIONS | ENG. NUM. |
| J101 | JACK - (3) 2X6 SFF STUD GRADE | | 1012 |
| J102 | JACK - (3) 2X4 SFF STUD GRADE | | 1012 |
| J103 | JACK - (2) 2X4 SFF STUD GRADE | | 1020 |
| J104 | JACK - (2) 2X4 SFF STUD GRADE | | 1008 |
| J105 | JACK - (3) 2X6 SFF STUD GRADE | | 1020 |
| J106 | JACK - (3) 2X4 SFF STUD GRADE | | 1020 |
| J107 | JACK - (4) 2X4 SFF | | 1025 |
| J128 | JACK - (2) 2X4 SFF | ELK | 1024 |
| J129 | JACK - (3) 2X4 SFF | ELK | 2000 |
| J130 | JACK - (3) 2X4 SFF | ELK | 2000 |
| J131 | JACK - (2) 2X4 SFF STUD GRADE | ELK | |
| J137 | JACK - (4) 2X4 SFF | | 1025 |
| J139 | JACK - (3) 2X6 SFF STUD GRADE | MAA | 1027 |
| J140 | JACK - (3) 2X6 SFF STUD GRADE | MAA | 1027 |
| J144 | JACK - (2) 2X4 SFF STUD GRADE | GCH | 1051 |
| J145 | JACK - (2) 2X4 SFF STUD GRADE | GCH | 1051 |

| STEEL COLUMN SCHEDULE | | | | | |
|-----------------------|---------------------------|-----------|----------|-----------|---------|
| IDENTIFIER | STYLE | HEIGHT | OPTIONS | ENG. NUM. | REMARKS |
| C101 | STANCHION - 3 IN SCHED 40 | 9'-2 1/8" | GCH, FBA | 1025 | |

| FIELD INSTALLED FIRST FLOOR BEAM/HEADER SCHEDULE | | | | | |
|--|---------------------------|---------|---------|-----------|----------------------------|
| IDENTIFIER | DESCRIPTION | LENGTH | OPTIONS | ENG. NUM. | REMARKS |
| B101 | BEAM STEEL - W10X30 | 19'-4" | | 1025 | |
| B102-2 | LVL - 11-14 | 23'-10" | | 1020 | 1A, 2-PLY, FIELD INSTALLED |
| B104-2 | LVL - 11-04 | 9'-1" | | 1012 | |
| PF101 | EXT HEADER - 2X12 - 2 PLY | 19'-8" | GCH | 1051 | 2-PLY, PORTAL FRAME |

REMARKS

| | |
|----------|------|
| REV. NO. | DATE |
| | |
| | |
| | |
| | |

NVR, Inc., owner, expressly reserves its copyright in the architectural plans. These plans are not to be reproduced, changed, copied, or otherwise used without the prior written consent of NVR, Inc.

NVR
 NVR, Inc.
 Architects
 5285 West
 Frederick, MD 21703

SET NO. BAT00
 VERSION 03
 DRAWING TITLE
 FIRST FLOOR PLAN
 OPTION DESCRIPTION

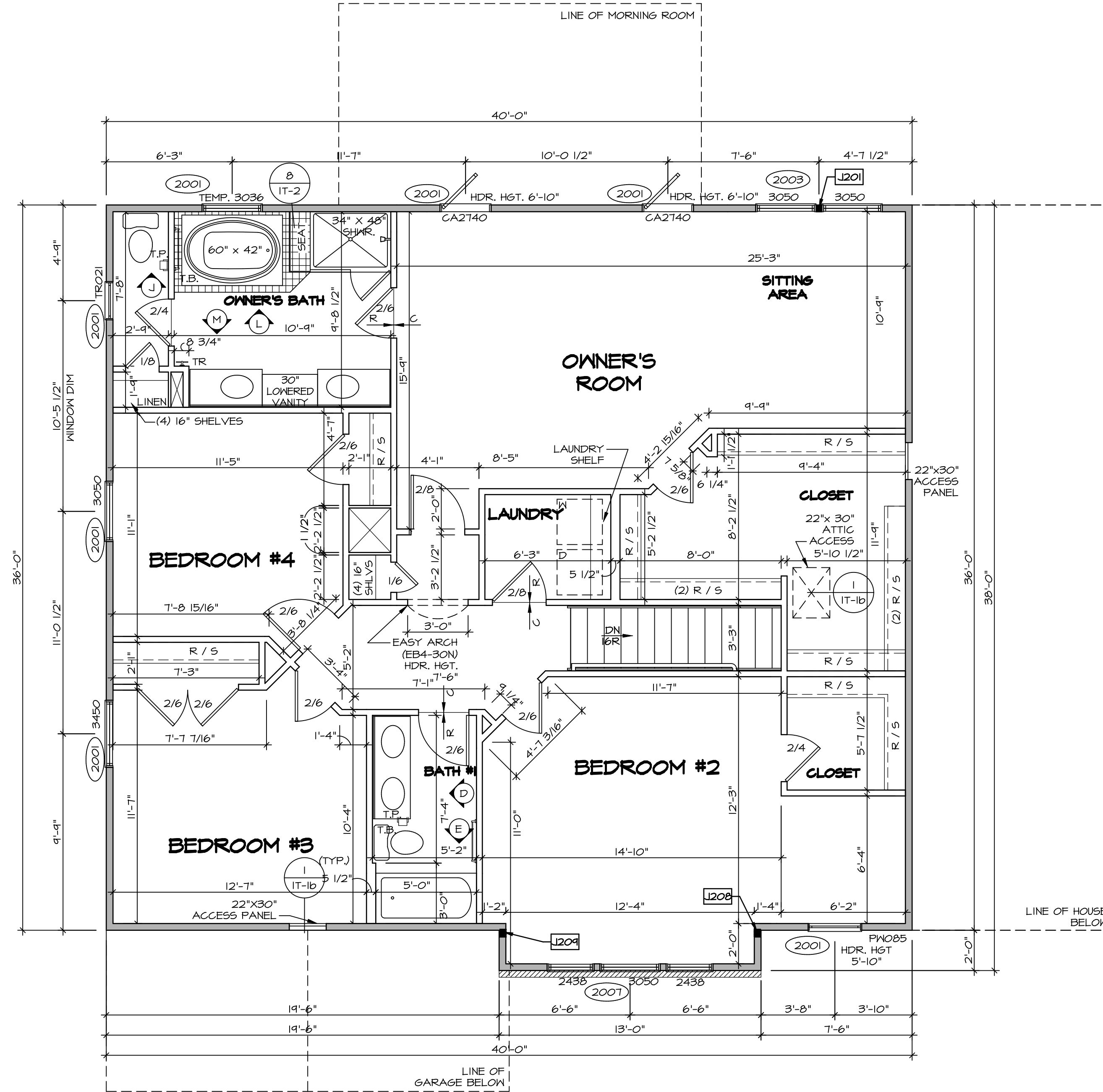
SHEET NO. **A-7**
 49

C:\NVR\Solves\BATEMAN_BAT00_03\DCY-16-K43\B0103\Sheets\101-Specific_19 A-7 PLAN_L5.dwg 05/22/19 - 4:22 pm

| SECOND FLOOR JACK SCHEDULE | | | |
|----------------------------|--------------------|---------|-----------|
| IDENTIFIER | DESCRIPTION | OPTIONS | ENG. NUM. |
| J201 | JACK - (2) 2X4 SPM | MAR | 2003 |
| J208 | JACK - (3) 2X4 SPM | ELK | 2000 |
| J204 | JACK - (3) 2X4 SPM | ELK | 2000 |

FLOOR PLAN NOTES

- ALL HEADERS ARE (2) 2x6 w/ 2x4 WALLS OR (3) 2x6 w/ 2x6 WALLS, UNLESS OTHERWISE NOTED.
- ALL HEADERS TO HAVE (1) 2x4 OR 2x6 JACK EACH END, UNLESS OTHERWISE NOTED.
- ALL EXTERIOR WALLS TO BE 4" AND ALL INTERIOR WALLS TO BE 3 1/2", UNLESS OTHERWISE NOTED.
- HATCHED AREAS INDICATE DROPPED CEILINGS. ALL DROPPED CEILINGS ARE 12" UNLESS OTHERWISE NOTED.
- SEE "BRACED WALL PANEL DETAIL SHEET" FOR SPECIAL WALL FRAMING LOCATIONS AND HEADER SIZES, IF APPLICABLE.
- SEE STANDARD DETAIL CATEGORY "IT" SHEET(S) FOR INTERIOR TRIM DETAILS.
- SEE ARCHITECTURAL DETAIL SHEET "AD" FOR HOUSE SPECIFIC INTERIOR TRIM OPTION TABLE.
- ALL WINDOWS HAVE 7'-0 1/2" HEADER HEIGHT UNLESS OTHERWISE NOTED.



LEGEND

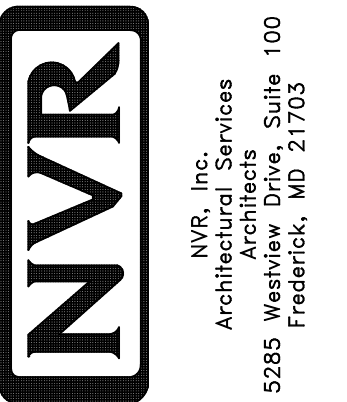
- BEARING WALL
- NON BEARING WALL
- INDICATES BEARING FROM POINT-LOAD ABOVE
- JACKS
- BEAM/HEADER
- PAD FOOTING
- STEEL COLUMN
- PORTAL FRAME
- JOIST/TRUSS
- LVL
- ENGINEERING PAGE NUMBER

SEE FC DETAILS FOR FRAMING CONNECTORS

SECOND FLOOR PLAN
SCALE: 1/4" = 1'-0"

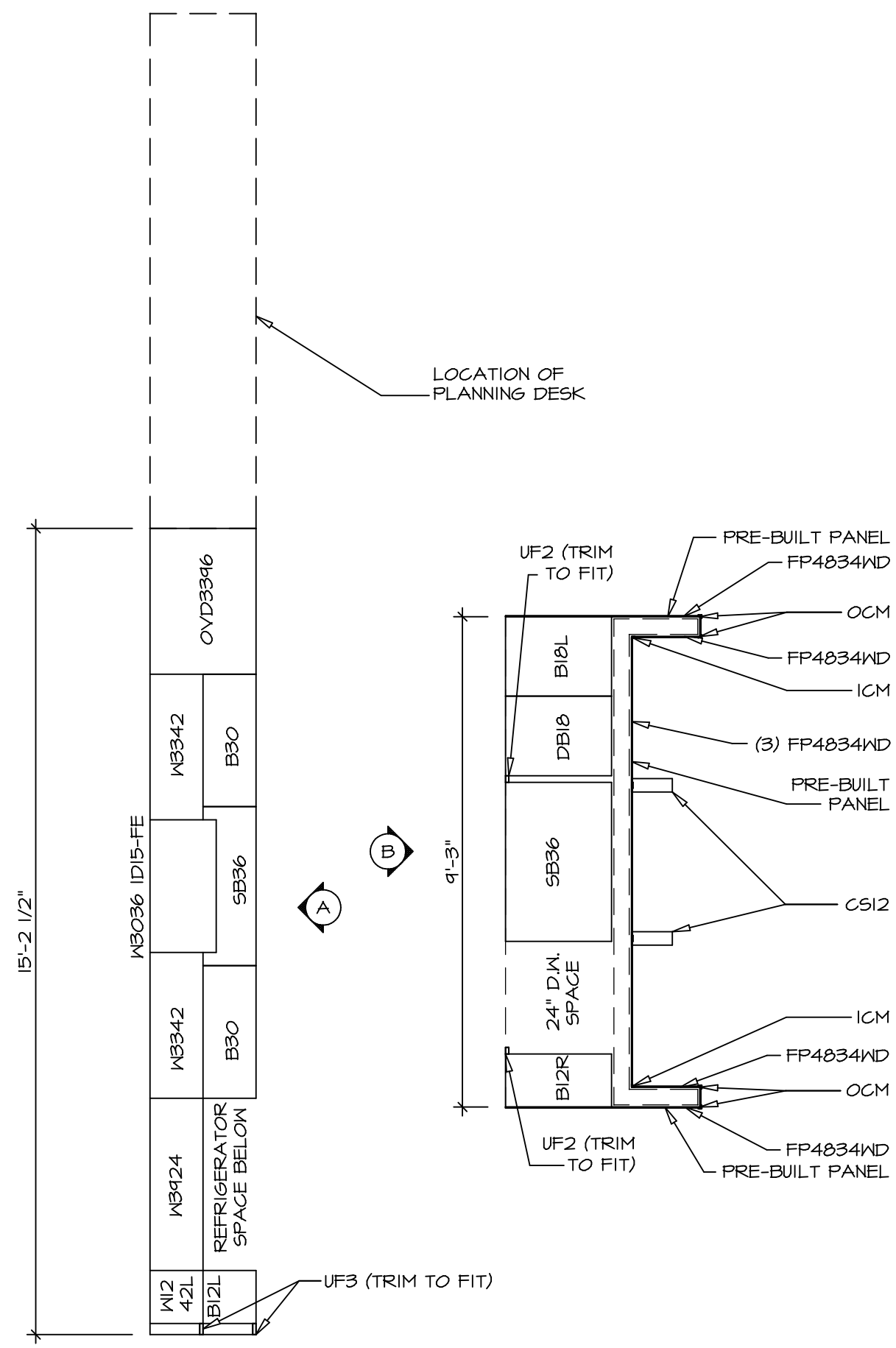
| REV. NO. | DATE | REMARKS |
|----------|--------|---------------------------------|
| 1 | 7/6/17 | TH - REVISED ROOF ACCESS PANELS |

NVR, Inc., owner, expressly reserves its copyright in these plans. These plans are not to be reproduced, changed, copied in any way, or used for any other project without the written consent of NVR, Inc.



| | |
|----------------|------------|
| SET NO. BATOOC | VERSION 03 |
| DRAWN BY | DATE: |
| OPTION | OPTION |

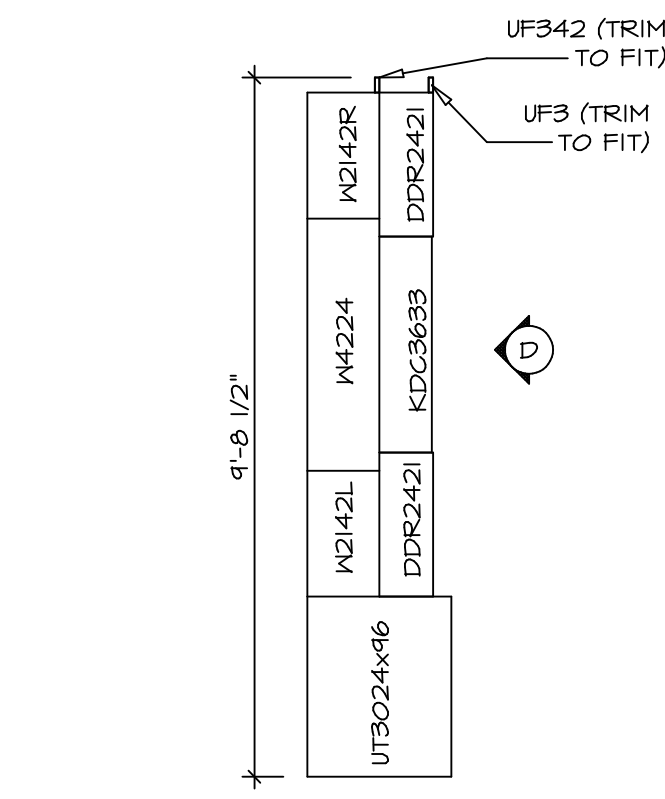
| | |
|----------------------|--|
| SHEET NO. A-8 | MODEL BATEMAN |
| 54 | DRAWING TITLE SECOND FLOOR PLAN |
| | OPTION DESCRIPTION |



KITCHEN CABINET PLAN - KC-3148

SCALE: 3/8" = 1'-0"

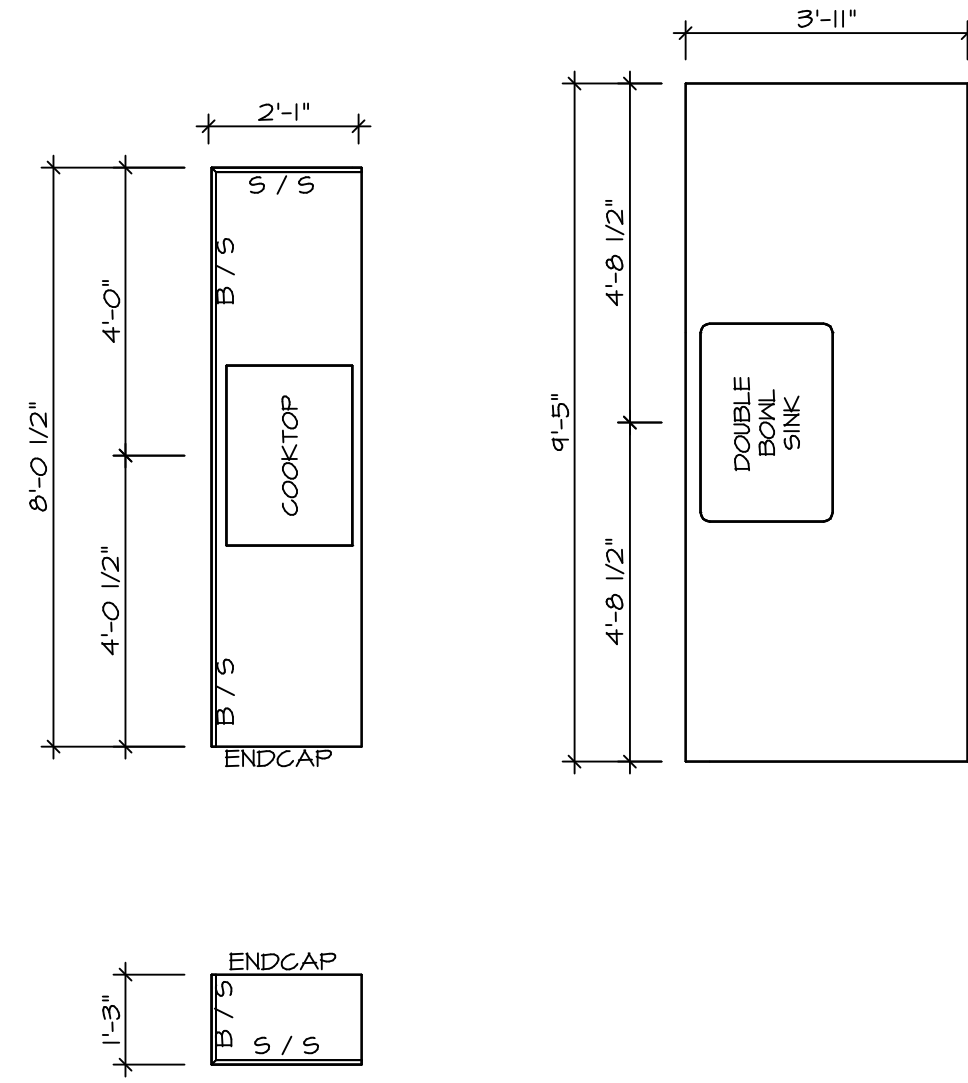
1
A-13



KITCHEN CABINET PLAN - KC-4215

SCALE: 3/8" = 1'-0"

5
A-13



KITCHEN COUNTERTOP PLAN - KC-3148

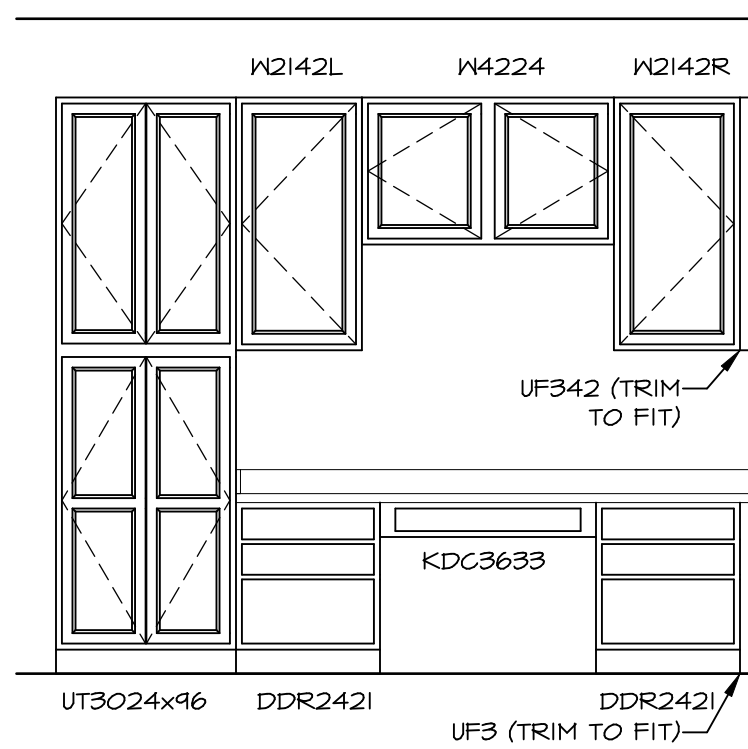
SCALE: 3/8" = 1'-0"

2
A-13

KITCHEN COUNTERTOP PLAN - KC-4215

SCALE: 3/8" = 1'-0"

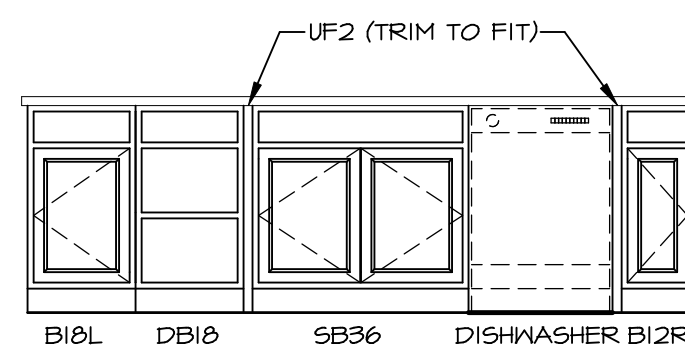
6
A-13



ELEVATION D

SCALE: 3/8" = 1'-0"

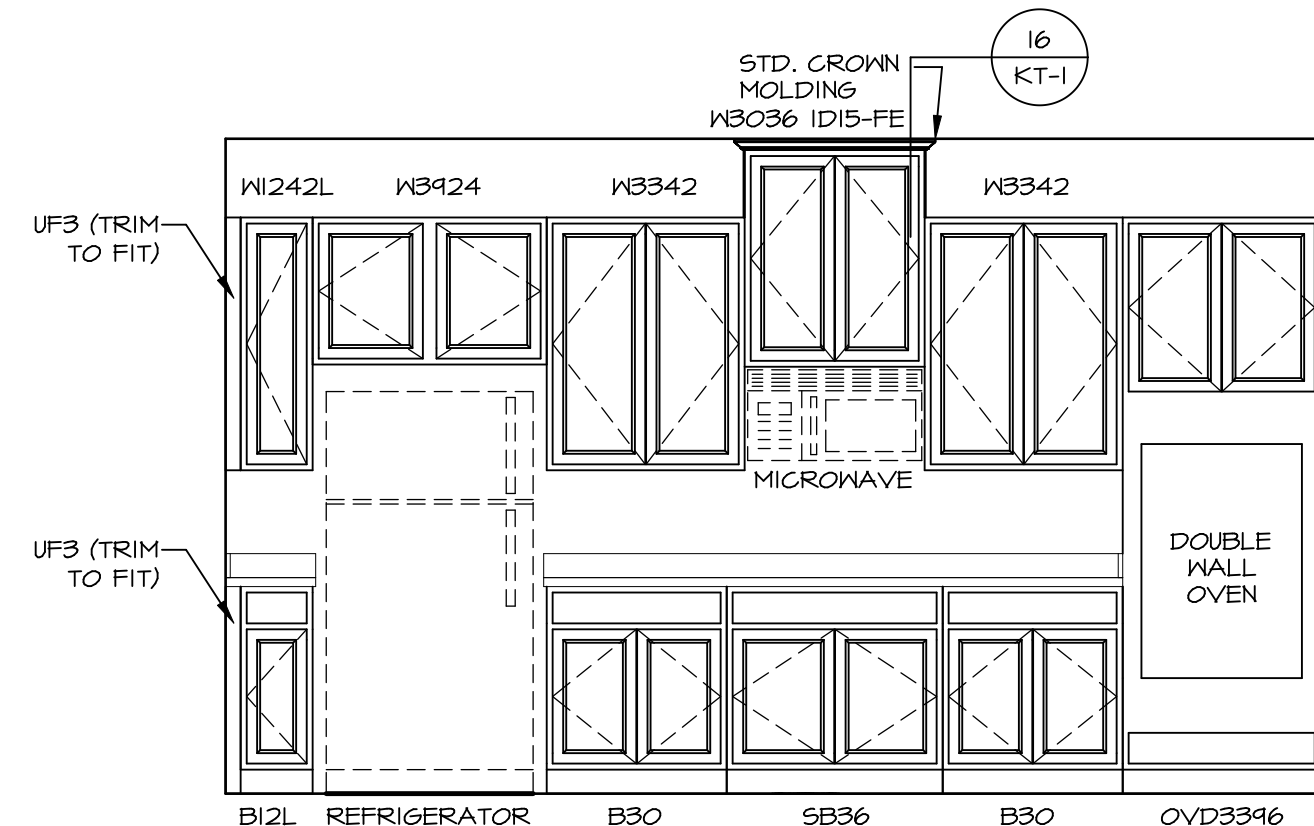
D



ELEVATION B

SCALE: 3/8" = 1'-0"

B



ELEVATION A

SCALE: 3/8" = 1'-0"

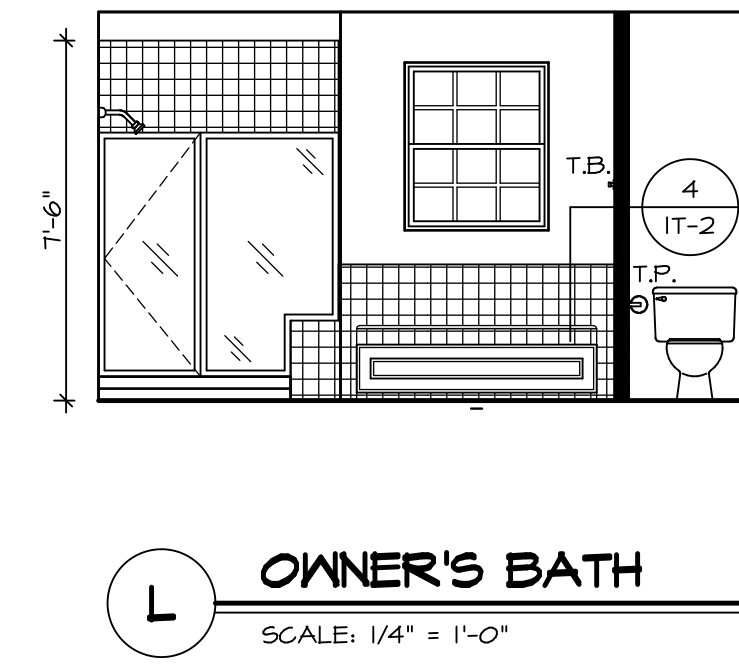
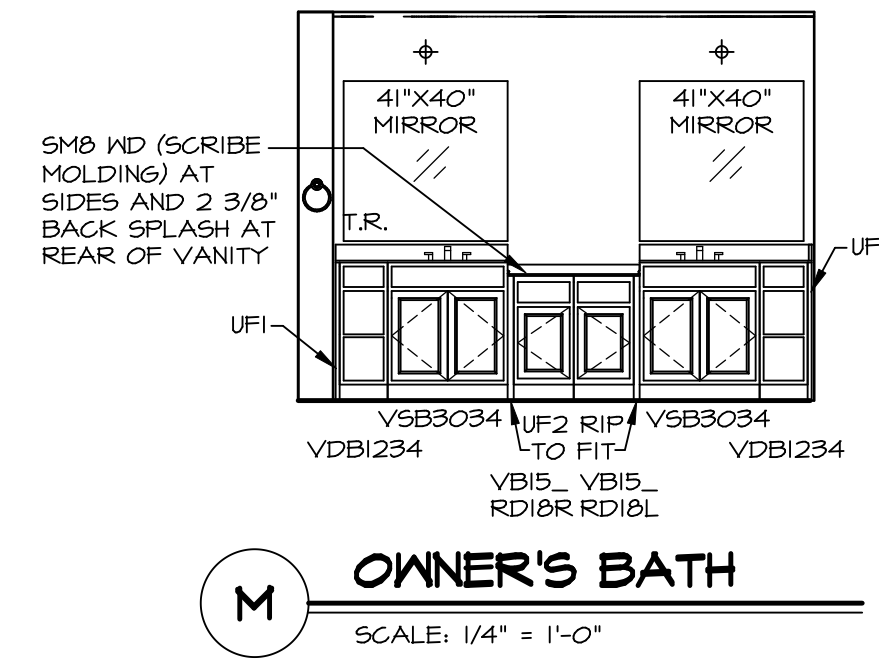
A

| SHEET NO. | MODEL | SET NO. | DATE | REV. NO. | DATE | REMARKS |
|-----------|---------|----------|----------|----------|------|---------|
| A-13 | BATEMAN | BAT00_03 | 05/22/18 | | | |
| 65 | BATEMAN | BAT00_03 | 05/22/18 | | | |

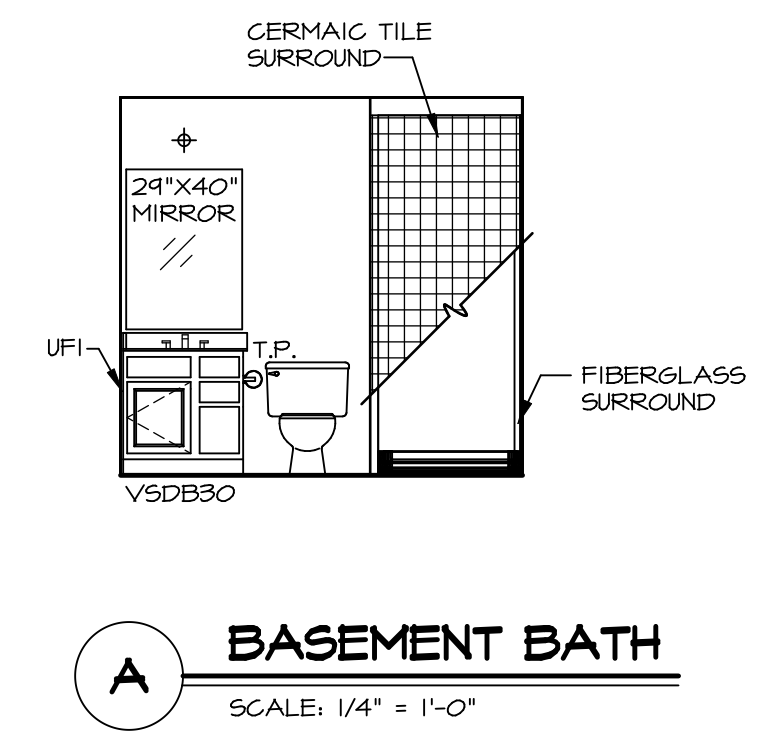
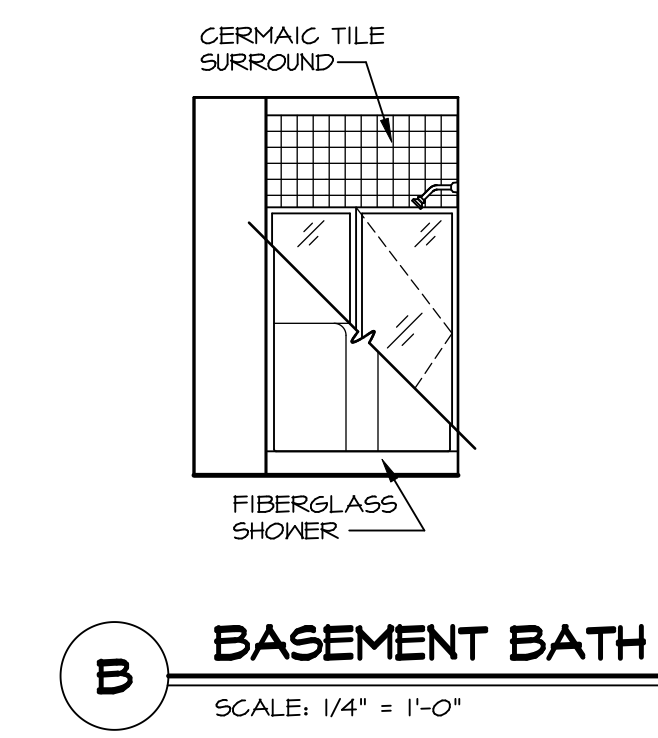
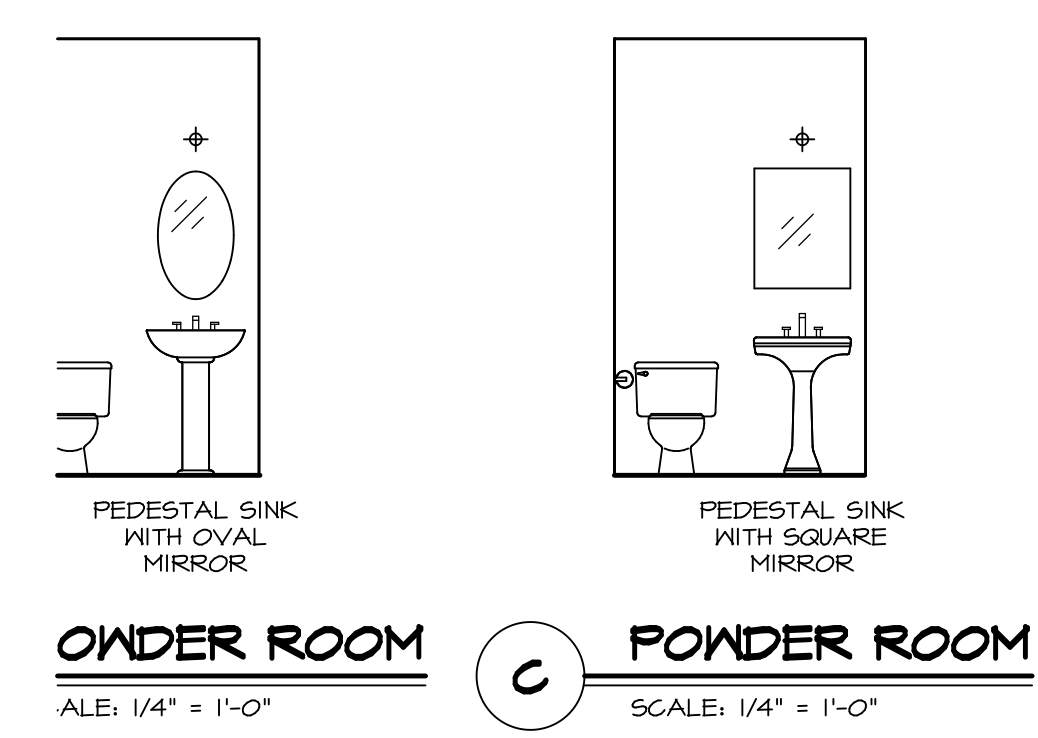
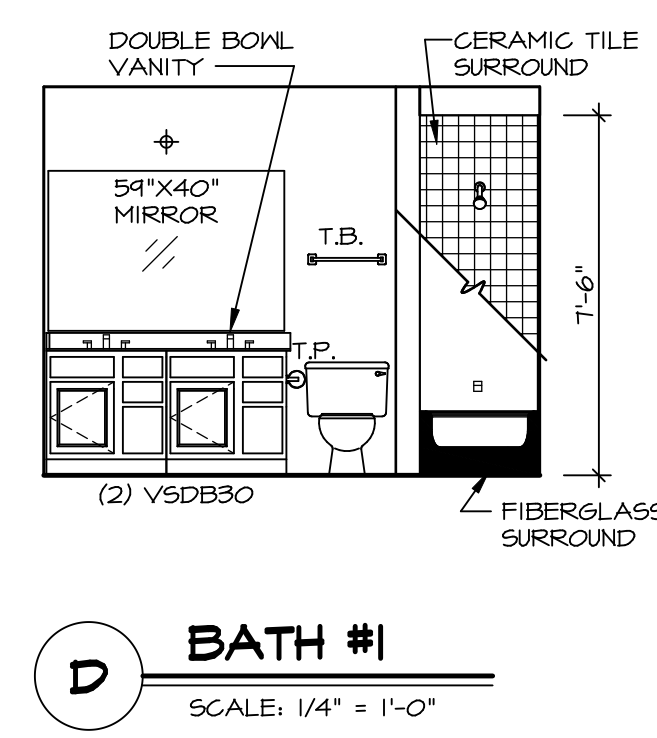
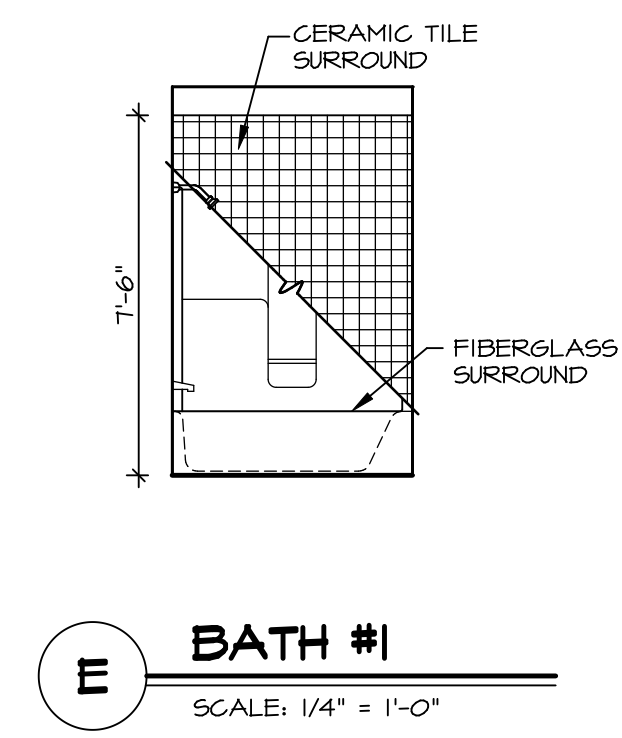
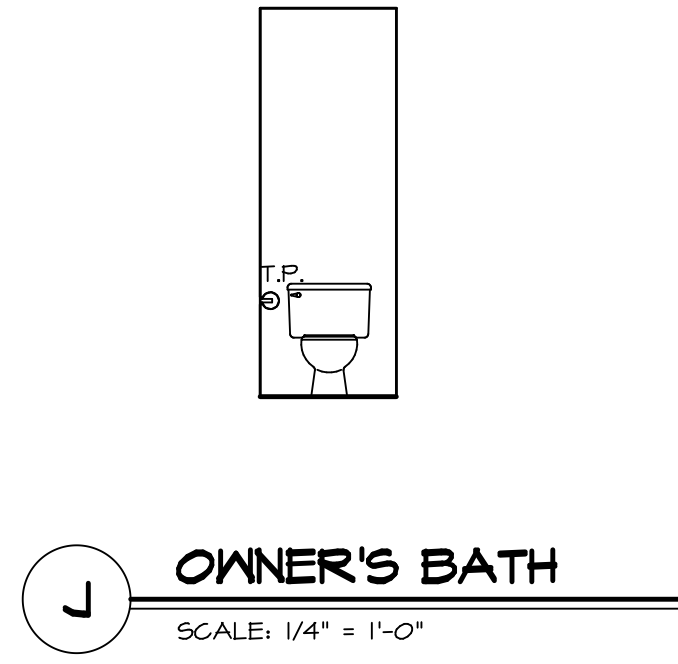
NVR
 NVR, Inc.
 Architectural Services
 Architects
 5285 Westover Hills, Suite 100
 Frederick, MD 21703

NVR, Inc., owner, expressly reserves its copyright in these plans. These plans are not to be reproduced, changed, copied, or otherwise used in any way without the written consent of NVR, Inc.

OPTION DESCRIPTION
 DRAWING TITLE
 KITCHEN PLANS



- NOTES:**
1. TEMPERED GLASS SHOWER ENCLOSURE WITH SWING DOOR OR OPTIONAL SLIDING DOOR BY DIVISION
 2. TUB ACCESS PANELS PROVIDED AS NEEDED, ALL MATERIALS BY DIVISION
 3. REFER TO SHEET IT-2 FOR TUB AND SHOWER DETAILS.
 4. ALL VSD24-42 DRAWERS TO BE SET ON RIGHT HAND.
 5. BATH ELEVATIONS ARE SHOWN PER PLAN.

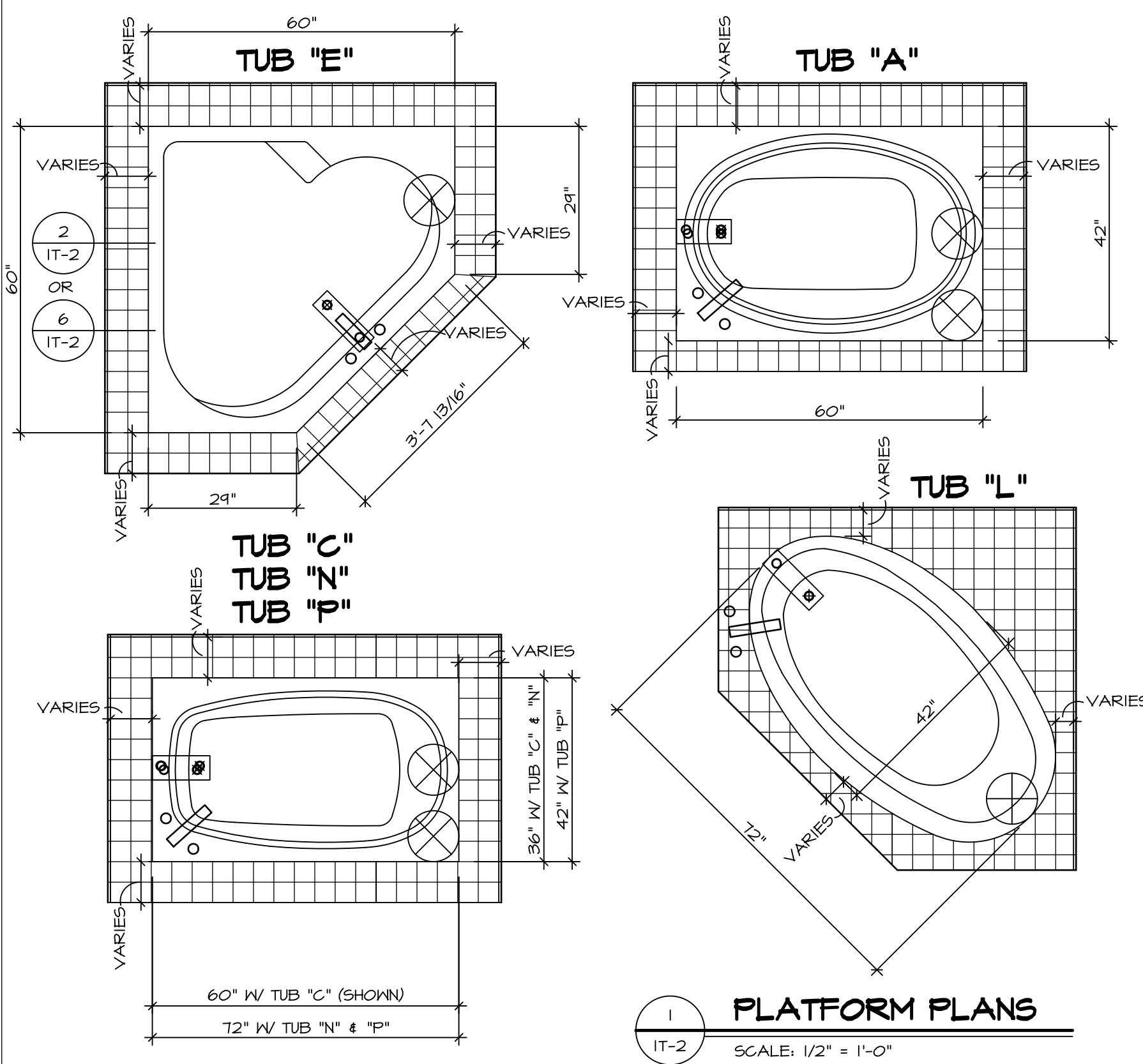


| SHEET NO. | MODEL | SET NO. | VERSION | DRAWN BY | DATE | OPTION | REMARKS |
|-----------|-----------------|---------|---------|----------|------|--------|---------|
| A-14 | BATEMAN | BAT00 | 03 | | | | |
| 10 | BATH ELEVATIONS | | | | | | |

NVR, Inc., owner, expressly reserves its copyright in these plans. These plans are not to be reproduced, changed, copied in any way, or used for any purpose not assigned to them without the written consent of NVR, Inc.

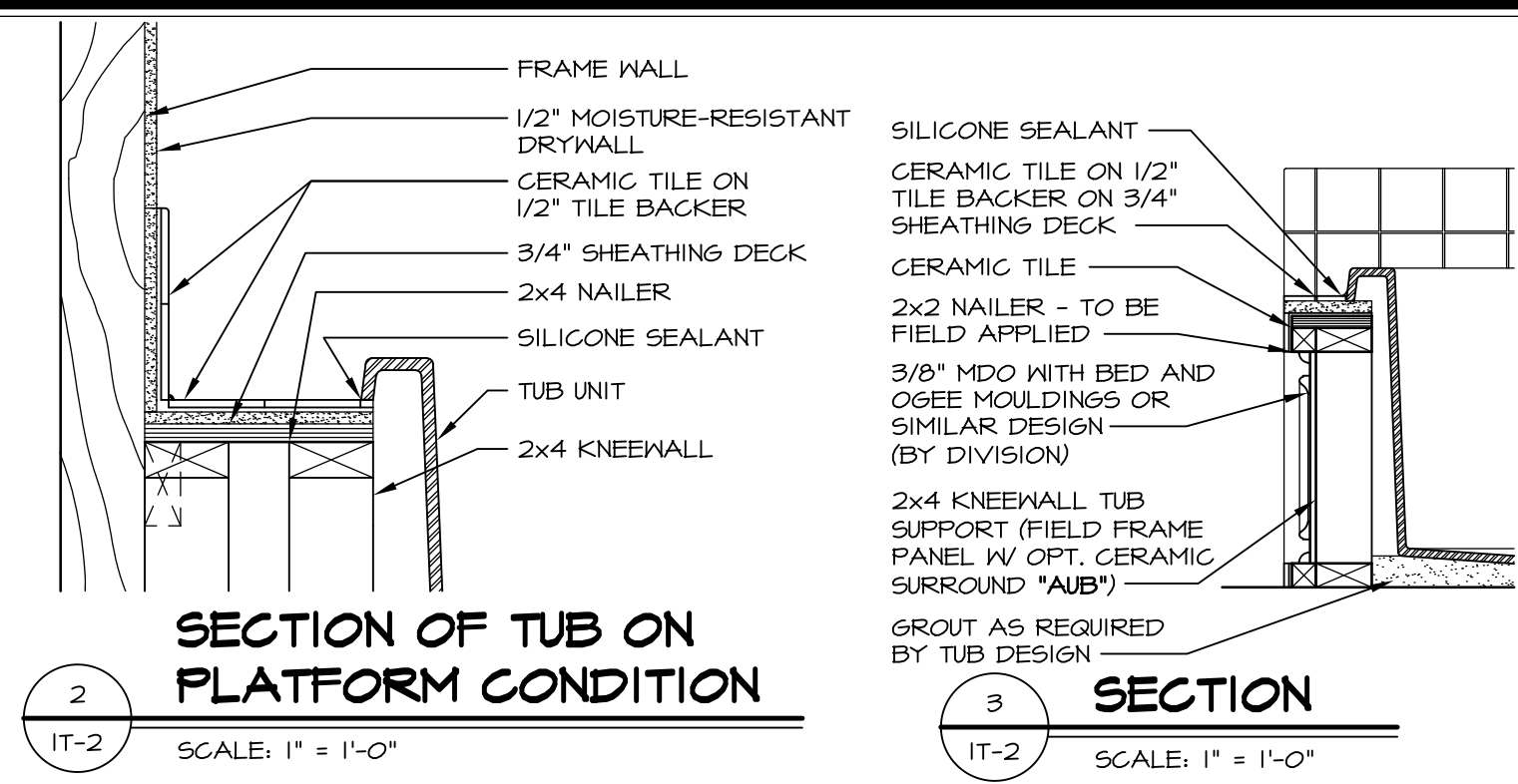
NVR
NVR, Inc.
Architectural Services
Architects
5285 Westgate Drive
Frederick, MD 21703

C:\NVR\Solves\BATEMAN_BAT00_03\BAT-16-K43\B00103\Sheets\10 A-14_BATH_LS.dwg 05/22/18 - 4:22 am

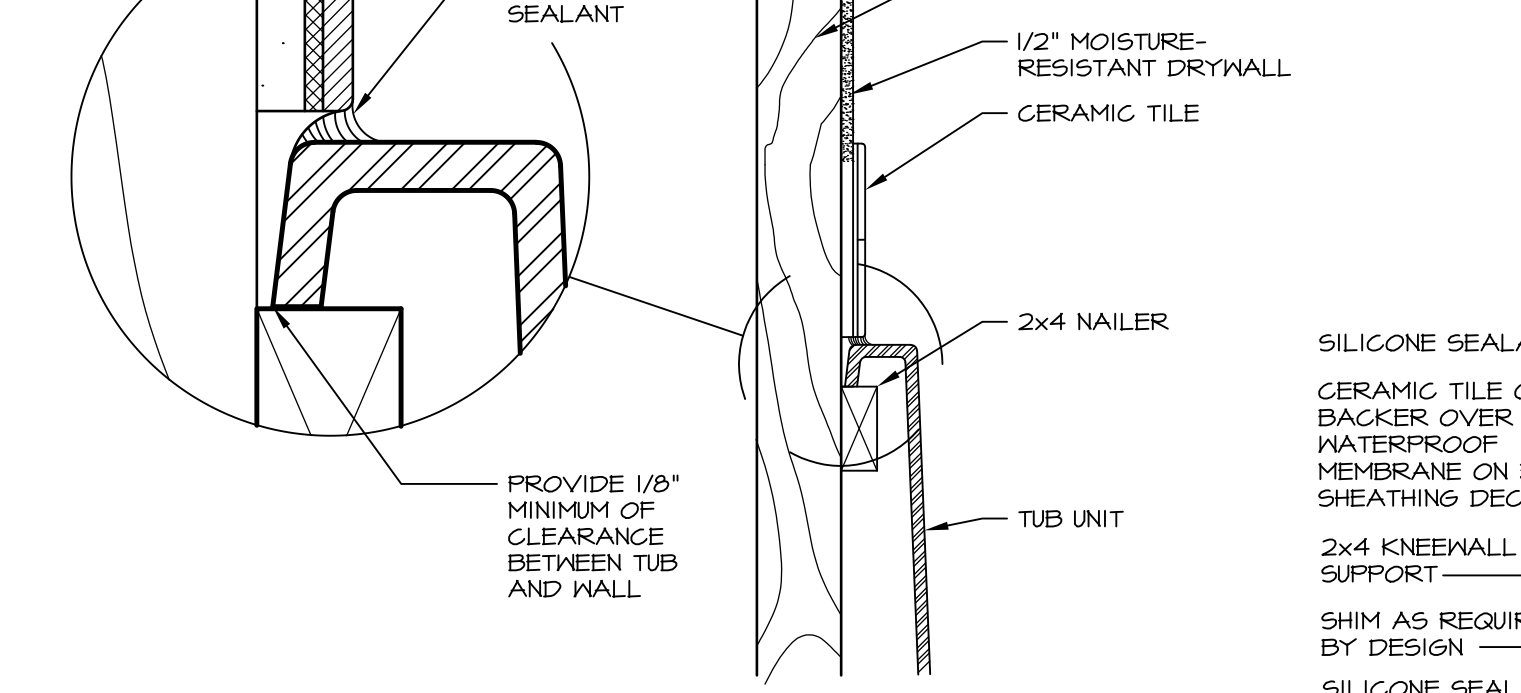


1 PLATFORM PLANS
SCALE: 1/2" = 1'-0"

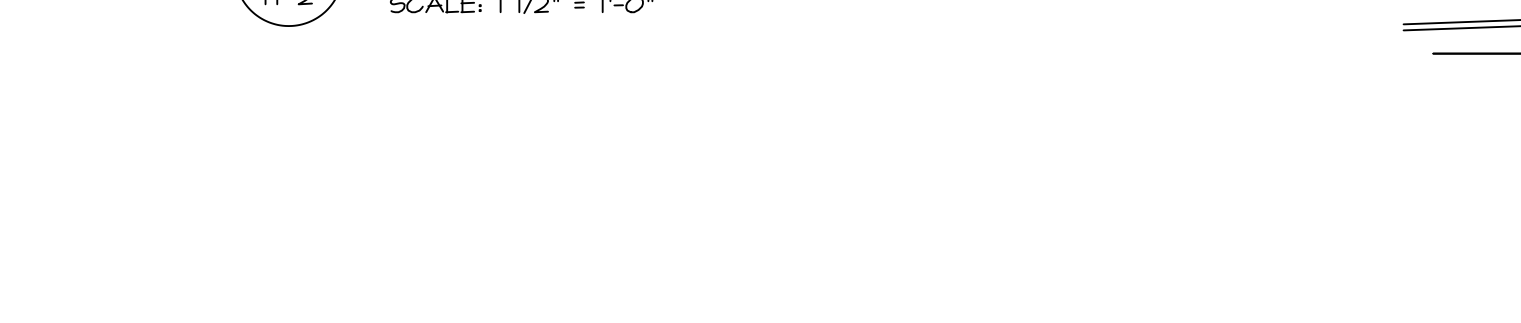
| TUB | MANUF. | HEIGHT | WIDTH | LENGTH | TUB DECK PANEL HEIGHT |
|-----|------------------|---------|-------|--------|-----------------------|
| "A" | KOHLER/ STERLING | 18 3/4" | 42" | 60" | 17 1/8" |
| "C" | KOHLER/ STERLING | 18 3/4" | 36" | 60" | 17 1/8" |
| "E" | KOHLER/ STERLING | 19 1/2" | 60" | 60" | 17 7/8" |
| "L" | KOHLER/ STERLING | 18 1/2" | 42" | 72" | 16 7/8" |
| "N" | KOHLER/ STERLING | 18 3/4" | 36" | 72" | 17 1/8" |
| "P" | KOHLER/ STERLING | 18 3/4" | 42" | 72" | 17 1/8" |



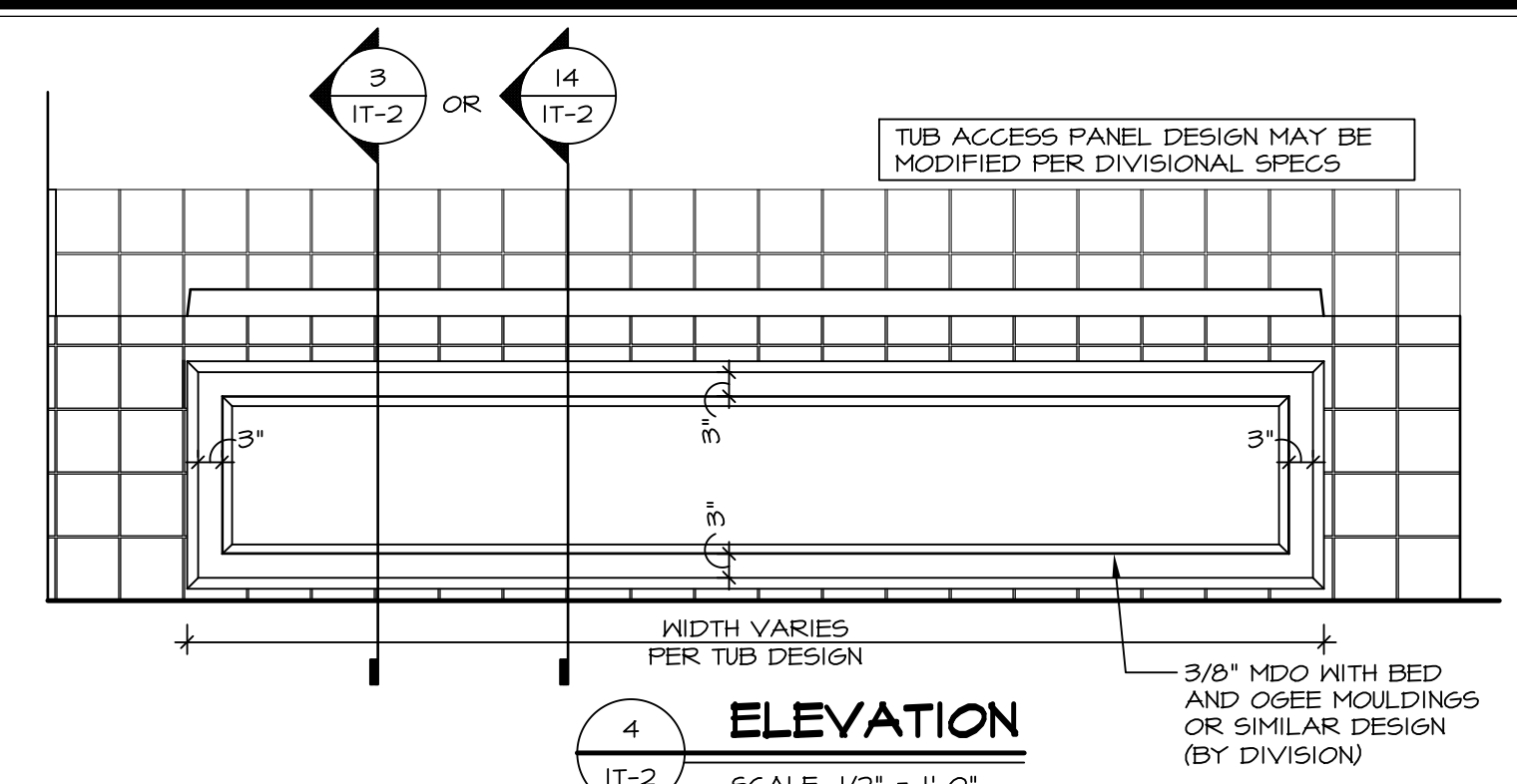
2 SECTION OF TUB ON PLATFORM CONDITION
SCALE: 1" = 1'-0"



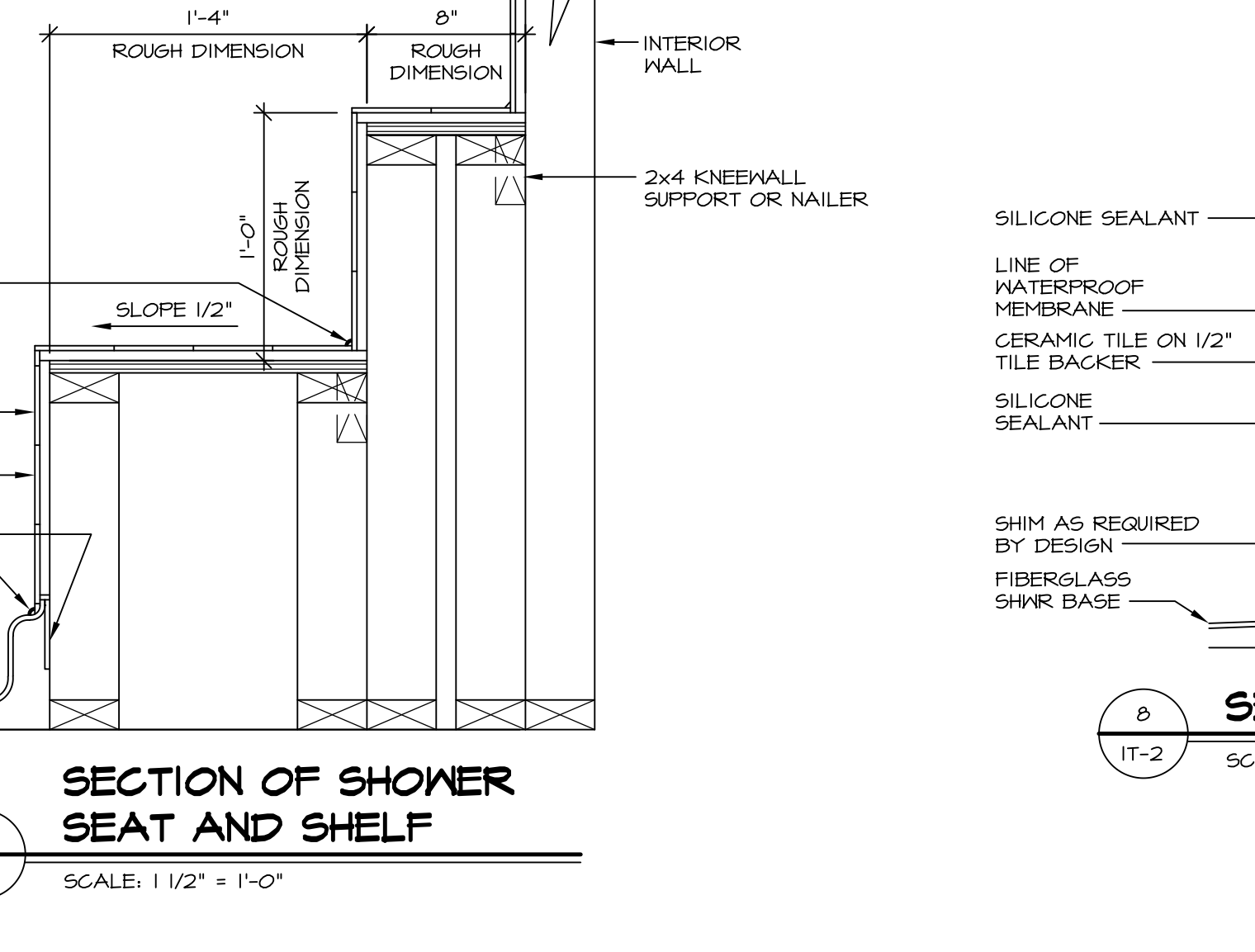
3 SECTION
SCALE: 1" = 1'-0"



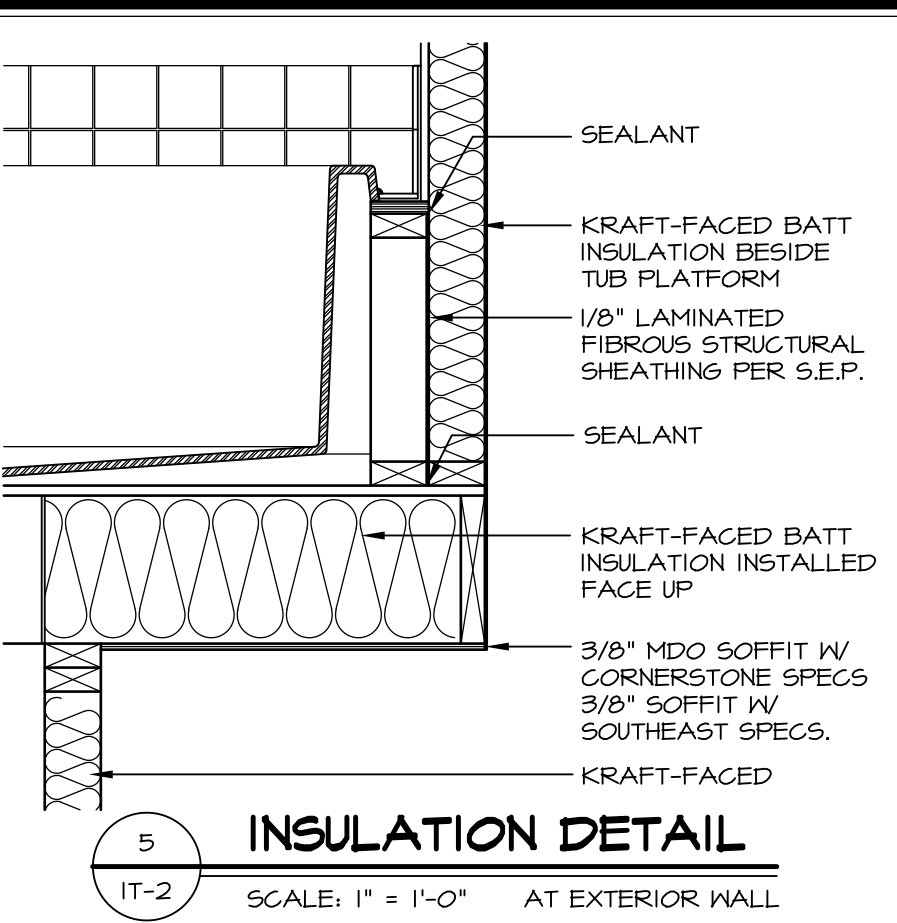
6 SECTION OF TUB TO WALL CONDITION
SCALE: 1 1/2" = 1'-0"



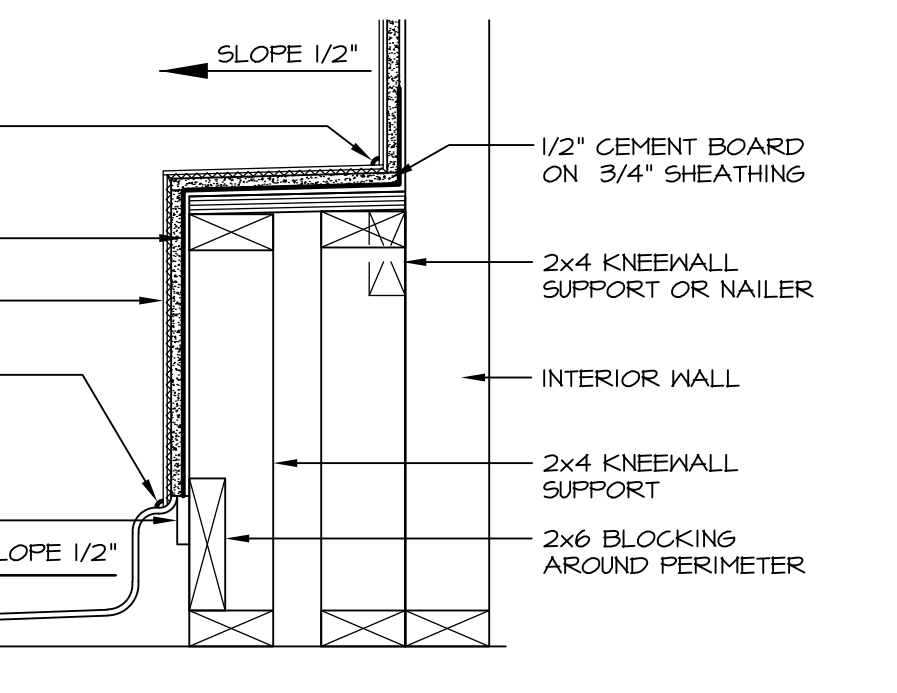
4 ELEVATION
SCALE: 1/2" = 1'-0"



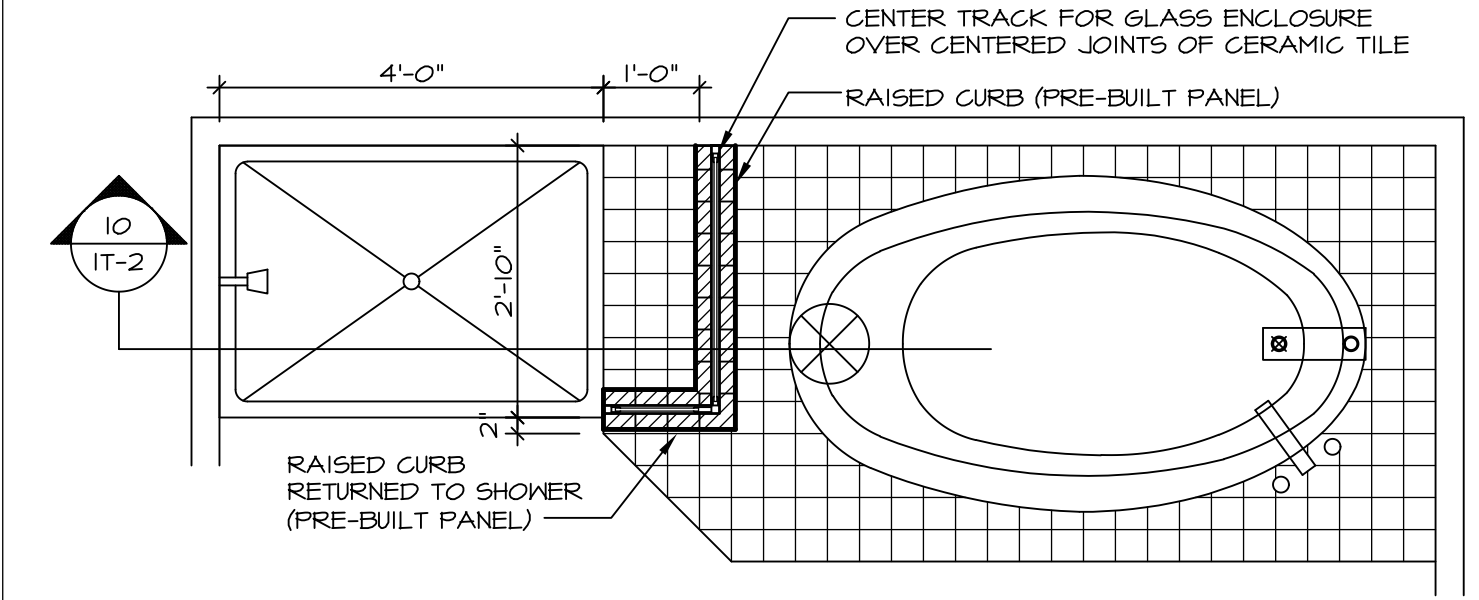
7 SECTION OF SHOWER SEAT AND SHELF
SCALE: 1 1/2" = 1'-0"



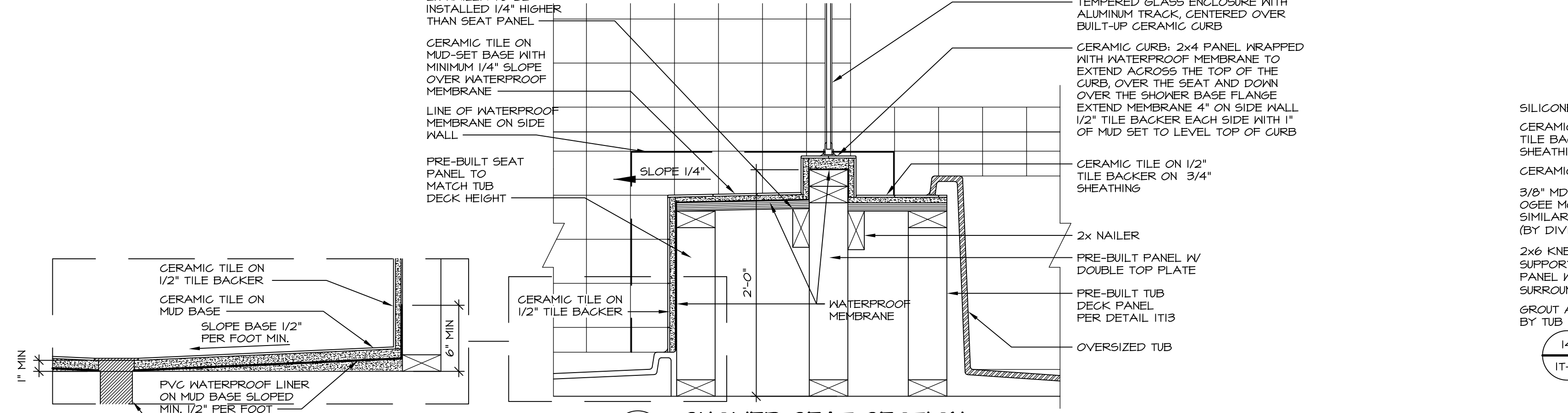
5 INSULATION DETAIL
SCALE: 1" = 1'-0" AT EXTERIOR WALL



8 SECTION OF SHOWER SEAT
SCALE: 1-1/2" = 1'-0" FIBERGLASS SHOWER BASE



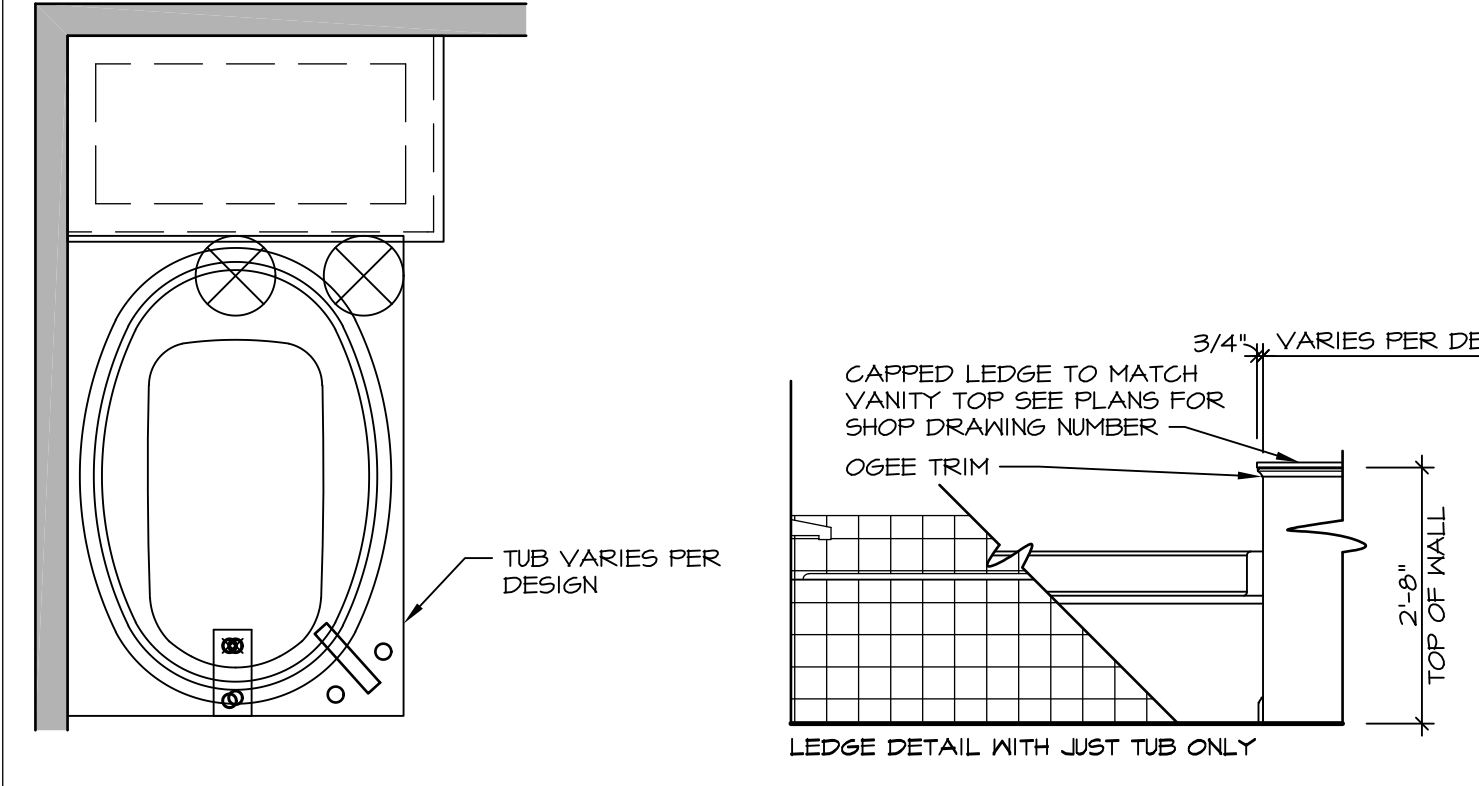
9 SHOWER SEAT PLAN / DETAIL
SCALE: 1/2" = 1'-0"



10 SHOWER SEAT SECTION
SCALE: 1-1/2" = 1'-0"



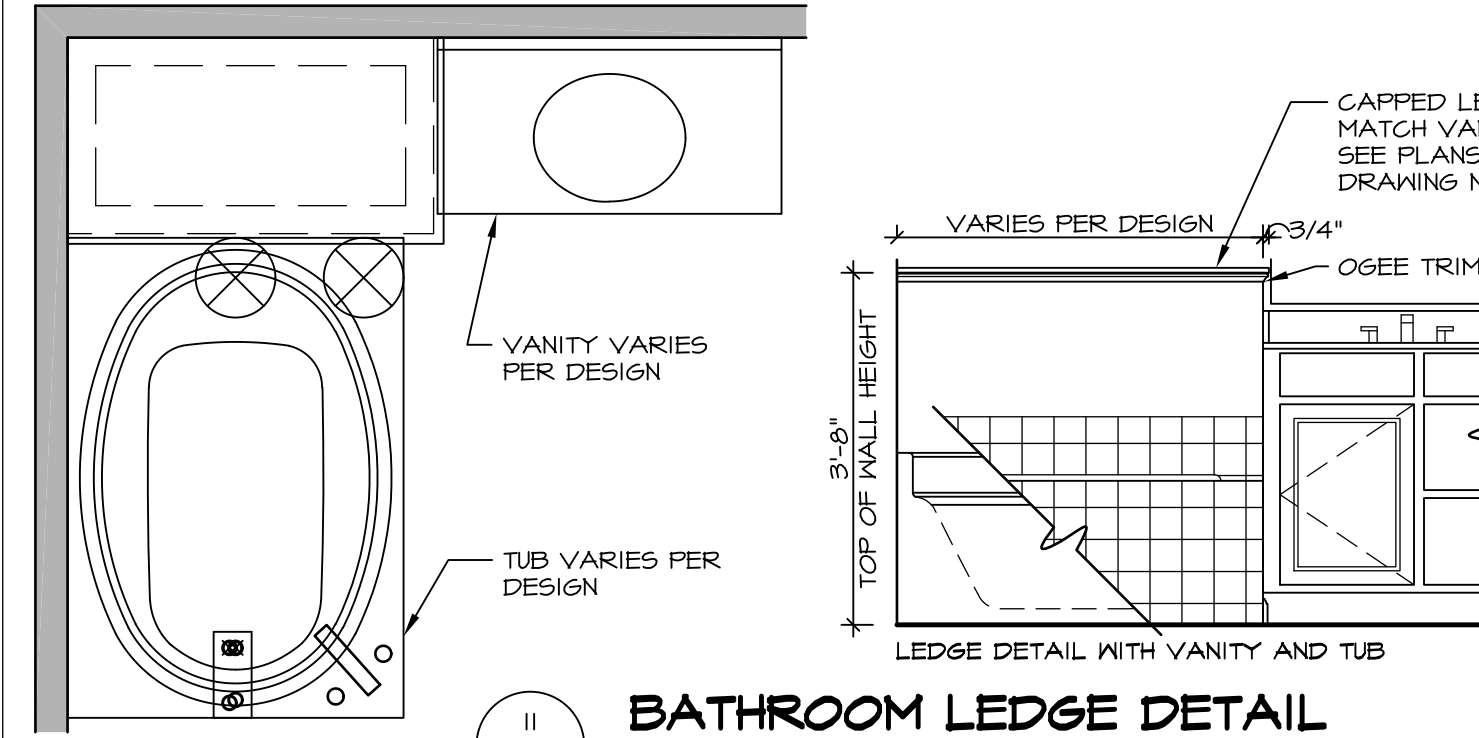
11 ALTERNATE SHOWER PAN DETAIL



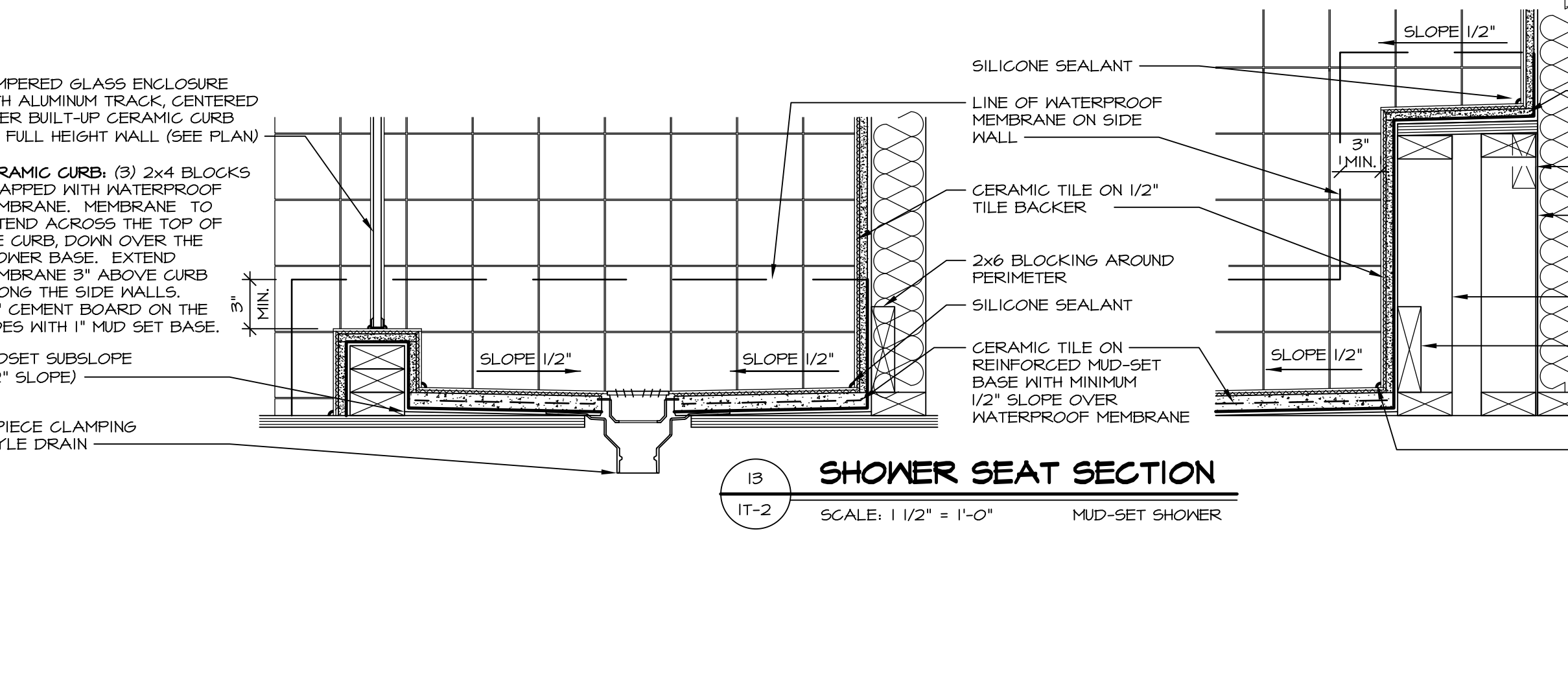
12 BATHROOM LEDGE DETAIL
SCALE: 1" = 1'-0"



12 SILL DETAIL
SCALE: 1" = 1'-0"



11 BATHROOM LEDGE DETAIL
SCALE: 1/2" = 1'-0"

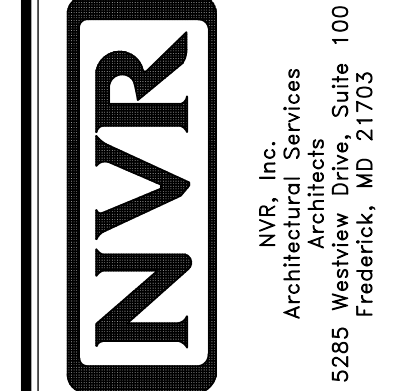


13 SHOWER SEAT SECTION
SCALE: 1 1/2" = 1'-0" MUD-SET SHOWER

REVISIONS

| REV. NO. | DATE | DESCRIPTION |
|----------|--------|--|
| 1 | 5/1/17 | EBP - REVISED DETAIL 1 AND 11 TO REMOVE TUB ACCESS PANEL REF. (DSS #15 5414) |
| 2 | 9/2/17 | EBP - REVISED T-FLY NOTE TO CALL OUT LFS |
| 3 | 9/2/17 | EBP - REVISED NOTE ON DETAIL #1 - REVISED ORDER OF MATERIAL PARA#4934 |

NVR, Inc., owner, expressly reserves its common law copyright and other property rights in these plans. These plans are not to be reproduced, stored in a retrieval system, or transmitted in any form or by any means, electronic, mechanical, photocopying, recording, or by any information storage and retrieval system, without the prior written consent of NVR, Inc.



SET NO. NVR

VERSION

DRAWN BY

DATE:

OPTION

MODEL

STANDARD DETAILS

DRAWING TITLE

INTERIOR TRIM DETAILS

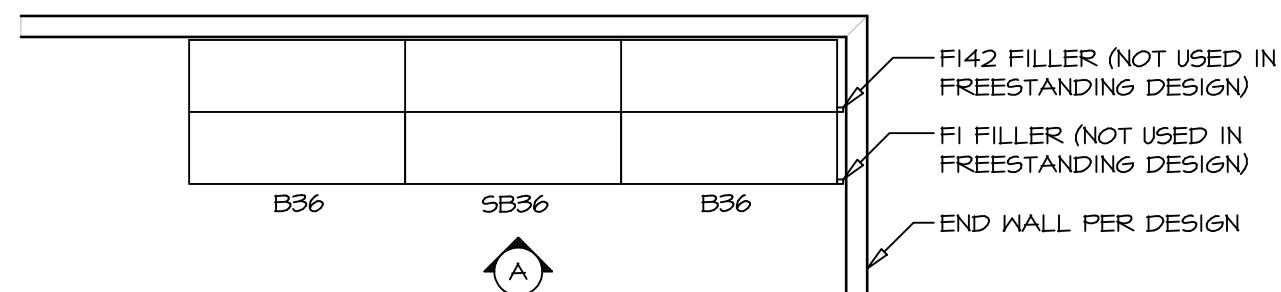
BATH DETAILS

OPTION DESCRIPTION

SHEET NO. **IT-2**

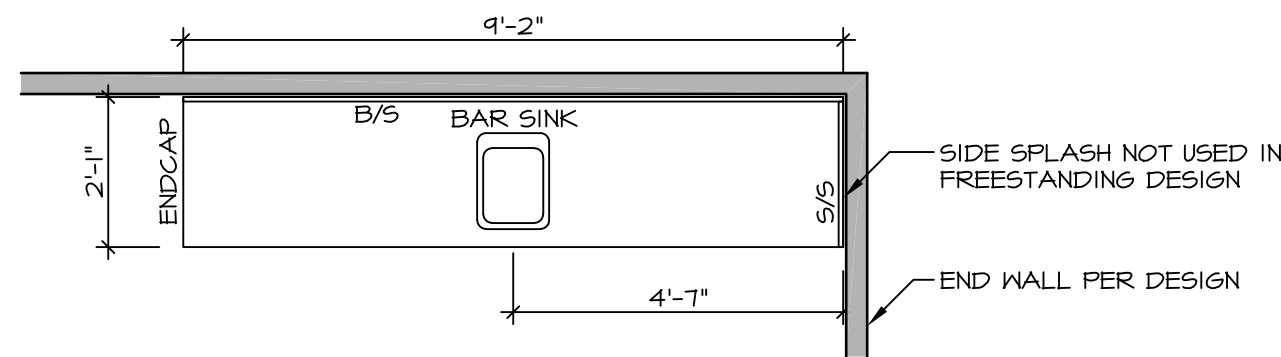
J:\Dwg\NVR\Interior Trim\IT2.dwg 09/27/17 - 9:20 am

NOTE:
REVIEW HOUSE SPECIFIC
PLANS FOR LOCATION
AND HANDING



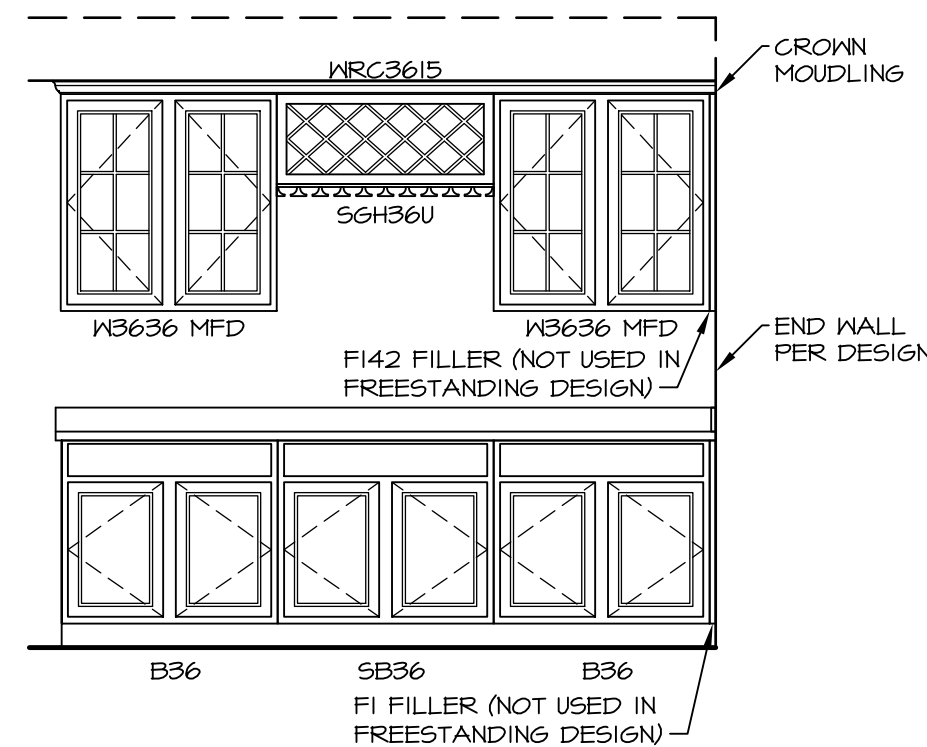
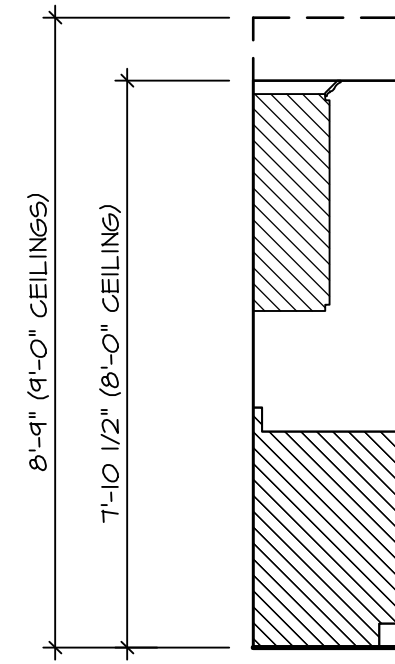
**KITCHEN CABINET
PLAN KC - 1900**

2
IT-3b SCALE: 3/8" = 1'-0"



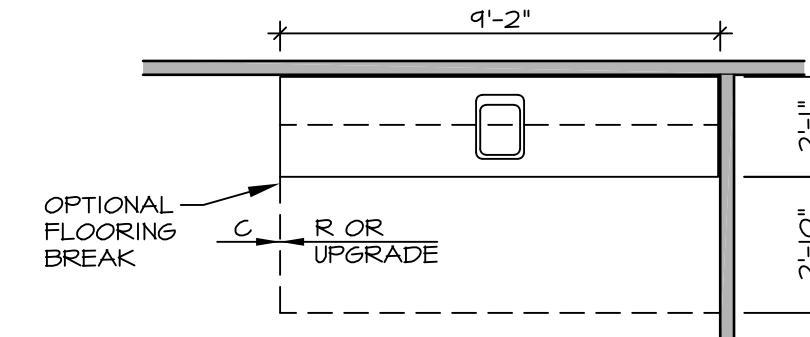
**KITCHEN COUNTERTOP
PLAN KT - 1900**

6
IT-3b SCALE: 3/8" = 1'-0"



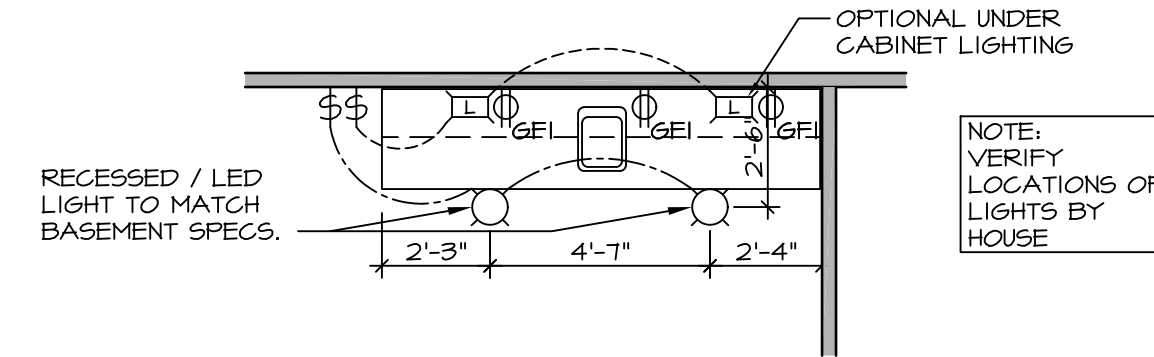
ELEVATION "A"

3
IT-3b SCALE: 3/8" = 1'-0"



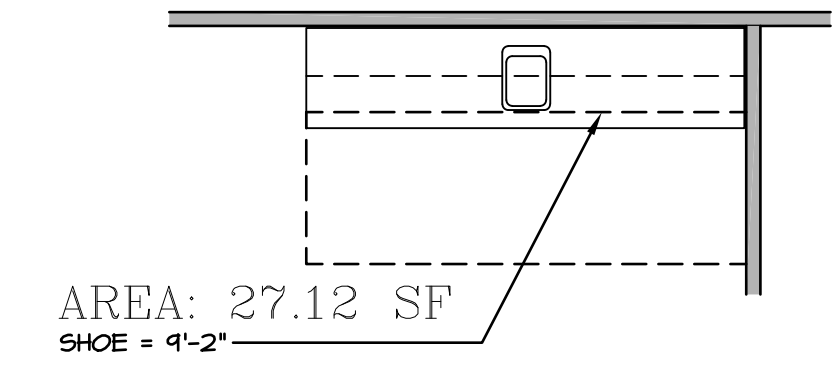
FLOOR PLAN

4
IT-3b SCALE: 1/4" = 1'-0"



FLOOR PLAN ELECTRICAL LAYOUT

7
IT-3b SCALE: 1/4" = 1'-0"



AREA: 27.12 SF
SHOE = 4'-2"

FLOORING PLAN

5
IT-3b SCALE: 1/4" = 1'-0"

WET BAR DETAILS

1
IT-3b SCALE: VARIES * SHOWN AS END WALL DESIGN

| REV. NO. | DATE | REMARKS |
|----------|---------|--|
| 1 | 5/17/17 | 56A - REVISED FLOOR PLAN DIMENSIONS TO MATCH COUNTERTOP DIMENSIONS |
| 2 | 5/23/17 | 56A - REMOVED COUNTERTOP INFORMATION FROM 2/IT-3b |
| 3 | 6/5/17 | 56A - REMOVED U.C. REF. AND TURNED OFF FLOORING SPACES |
| 4 | 9/14/17 | EBP - ADDED NOTE TO RECESSED LIGHT / LED LIGHT IN NET BAR |

| SET NO. | VERSION | DATE | OPTION |
|---------|---------|------|--------|
| 1 | 1 | | |

NVR
Architectural Services
5285 West Annapolis Avenue, Suite 100
Frederick, MD 21703

| | |
|---|-------------|
| MODEL STANDARD DETAILS | SET NO. NVR |
| DRAWING TITLE INTERIOR TRIM DETAILS | VERSION |
| WET BAR DETAILS - BACK BAR (RYAN ONLY) | DRAWN BY |
| OPTION DESCRIPTION | DATE: |
| | OPTION |

SHEET NO.
IT-3b