

1
A-5 PLUMBING PLAN
SCALE: 1/4" = 1'-0"

SHEET NO. A-5	MODEL BATEMAN	SET NO. BAT00
OPTION DESCRIPTION 4-2	DRAWING TITLE PLUMBING PLAN	VERSION 03
	DATE:	DRAWN BY:
	OPTION:	

NVR
Architectural Services
5285 Westheimer, Suite 100
Frederick, MD 21703

NVR, Inc., owner, expressly reserves its copyright in these plans. These plans are not to be reproduced, changed, copied, or otherwise used in any way without the written consent of NVR, Inc.

REV. NO.	DATE	REMARKS

FLOOR PLAN NOTES

1. ALL HEADERS ARE (2) 2x6 w/ 2x4 WALLS OR (3) 2x6 w/ 2x6 WALLS, UNLESS OTHERWISE NOTED.
2. ALL HEADERS TO HAVE (1) 2x4 OR 2x6 JACK EACH END, UNLESS OTHERWISE NOTED.
3. ALL EXTERIOR WALLS TO BE 4" AND ALL INTERIOR WALLS TO BE 3 1/2", UNLESS OTHERWISE NOTED
4. HATCHED AREAS INDICATE DROPPED CEILINGS. ALL DROPPED CEILINGS ARE 12" UNLESS OTHERWISE NOTED.
5. SEE "BRACED WALL PANEL DETAIL SHEET" FOR SPECIAL WALL FRAMING LOCATIONS AND HEADER SIZES, IF APPLICABLE.
6. SEE STANDARD DETAIL CATEGORY "IT" SHEET(S) FOR INTERIOR TRIM DETAILS.
7. SEE ARCHITECTURAL DETAIL SHEET "AD" FOR HOUSE SPECIFIC INTERIOR TRIM OPTION TABLE.
8. ALL WINDOWS HAVE T-O 1/2" HEADER HEIGHT UNLESS OTHERWISE NOTED.

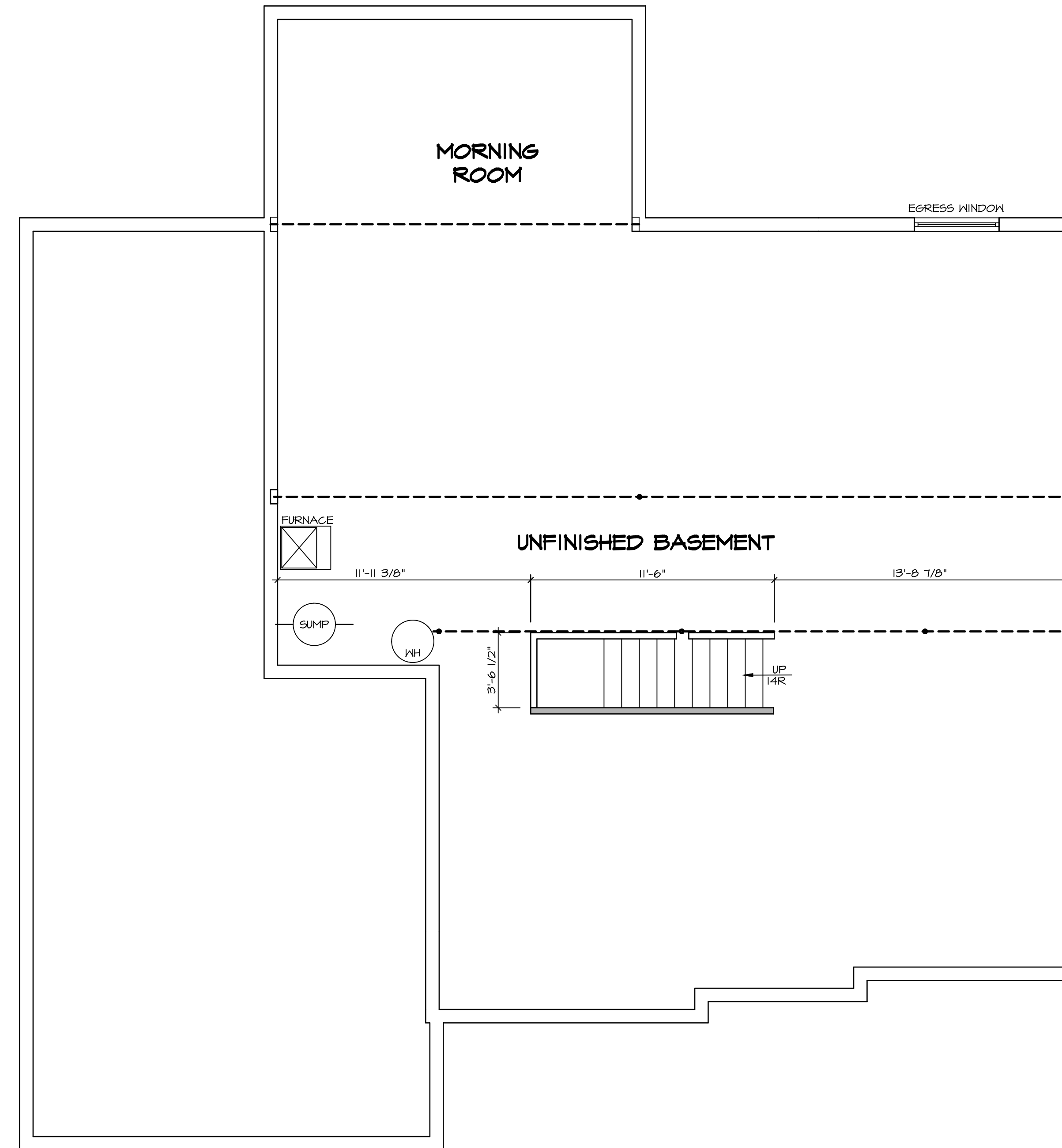
GYPSUM NOTES

AT GARAGE:
GYPSUM BOARD AT COMMON WALLS, CEILINGS, BEAM WRAPS AND SUPPORTS PER STANDARD DETAIL FA-1(b) FIRE ASSEMBLIES OR AS REQUIRED BY LOCAL CODE.

AT STAIRS:
1/2" GYPSUM BOARD AT UNDERSIDE OF STAIRS AND WALLS IN CLOSET

LEGEND

- BEARING WALL
 - NON BEARING WALL
 - INDICATES BEARING FROM POINT-LOAD ABOVE JACKS
 - BEAM/HEADER
 - PAD FOOTING
 - STEEL COLUMN
 - PORTAL FRAME
 - JOIST/TRUSS
 - LVL
 - ENGINEERING PAGE NUMBER
- SEE FC DETAILS FOR FRAMING CONNECTORS

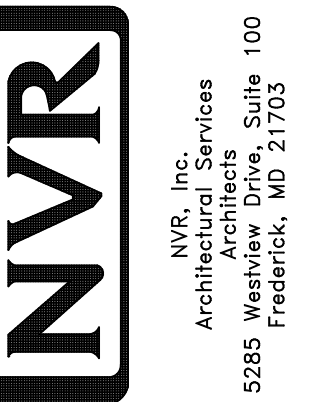


BASEMENT FLOOR PLAN
SCALE: 1/4" = 1'-0"

REMARKS

REV. NO. DATE

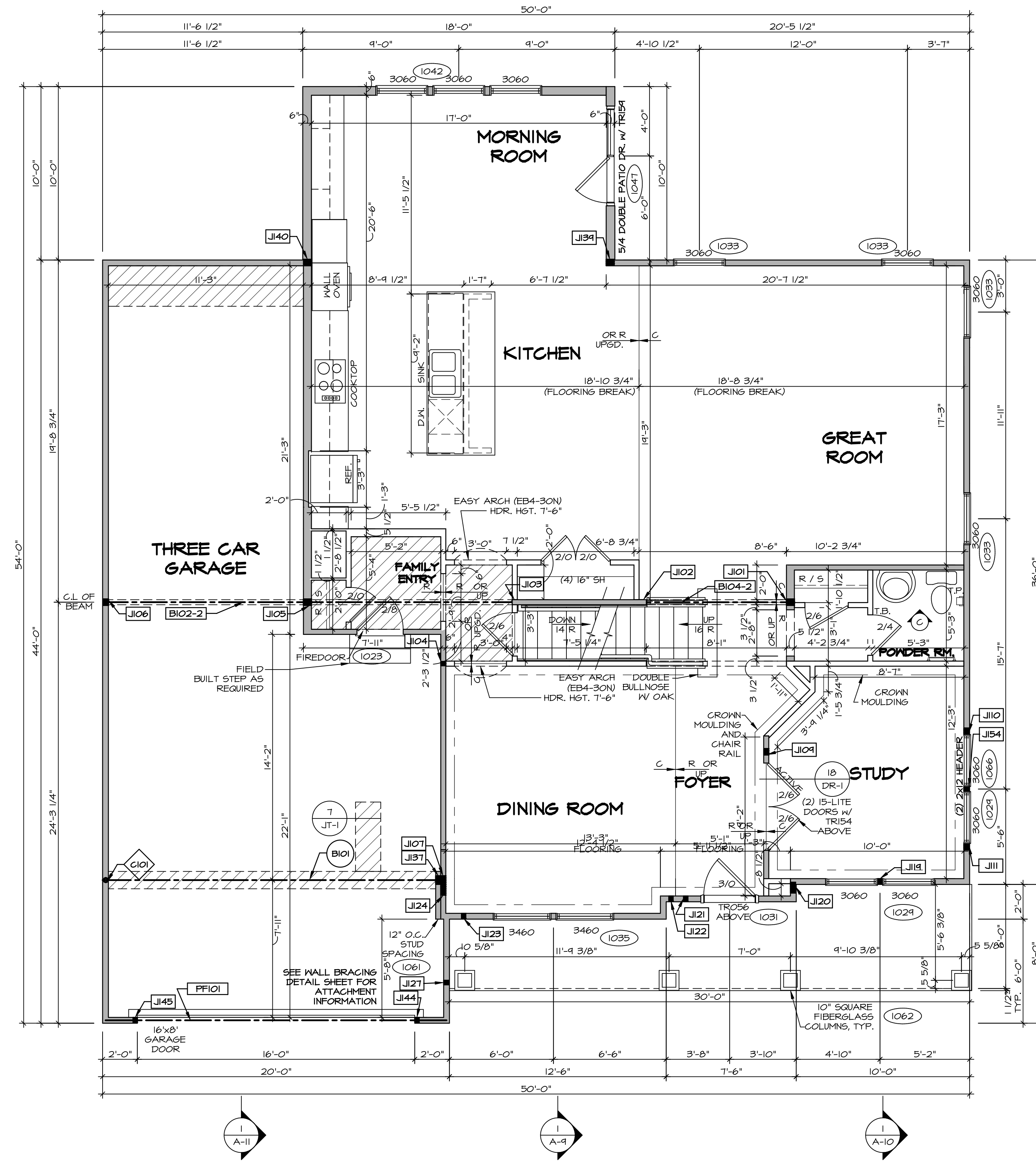
NVR, Inc., owner, expressly reserves its copyright in these plans. These plans are not to be reproduced, changed, adapted in any way, or otherwise used, without the prior written consent of NVR, Inc.



SET NO. BAT00
VERSION 03
DRAWN BY
DATE:
OPTION

MODEL
BATEMAN
DRAWING TITLE
BASEMENT FLOOR PLAN
OPTION DESCRIPTION

SHEET NO.
A-6
46



FIRST FLOOR PLAN
SCALE: 1/4" = 1'-0"

LEGEND

- BEARING WALL
- NON BEARING WALL
- INDICATES BEARING FROM POINT-LOAD ABOVE
- JACKS
- BEAM/HEADER
- PAD FOOTING
- STEEL COLUMN
- PORTAL FRAME
- JOIST/TRUSS
- LVL
- ENGINEERING PAGE NUMBER

SEE FC DETAILS FOR FRAMING CONNECTORS

- ### FLOOR PLAN NOTES
1. ALL HEADERS ARE (2) 2x6 w/ 2x4 WALLS OR (3) 2x6 w/ 2x6 WALLS, UNLESS OTHERWISE NOTED.
 2. ALL HEADERS TO HAVE (1) 2x4 OR 2x6 JACK EACH END, UNLESS OTHERWISE NOTED.
 3. ALL EXTERIOR WALLS TO BE 4" AND ALL INTERIOR WALLS TO BE 3 1/2", UNLESS OTHERWISE NOTED.
 4. HATCHED AREAS INDICATE DROPPED CEILINGS. ALL DROPPED CEILINGS ARE 12" UNLESS OTHERWISE NOTED.
 5. SEE "BRACED WALL PANEL DETAIL SHEET" FOR SPECIAL WALL FRAMING LOCATIONS AND HEADER SIZES, IF APPLICABLE.
 6. SEE STANDARD DETAIL CATEGORY "IT" SHEET(S) FOR INTERIOR TRIM DETAILS.
 7. SEE ARCHITECTURAL DETAIL SHEET "AD" FOR HOUSE SPECIFIC INTERIOR TRIM OPTION TABLE.
 8. ALL WINDOWS HAVE 7'-0 1/2" HEADER HEIGHT UNLESS OTHERWISE NOTED.

- ### GYPHUM NOTES
- AT GARAGE:**
GYPSUM BOARD AT COMMON WALLS, CEILING, BEAM WRAPS AND SUPPORTS PER STANDARD DETAIL FA-1(b) FIRE ASSEMBLY OR AS REQUIRED BY LOCAL CODE.
- AT STAIRS:**
1/2" GYPSUM BOARD AT UNDERSIDE OF STAIRS AND WALLS IN CLOSET

- ### LVL PLY TO PLY FASTENING SCHEDULE: (WHERE APPLICABLE BASED ON LVL USAGE)
- 1.A - (2) FLY UP TO AND INCLUDING 11 7/8" TALL; FASTEN PLYS W/ (2) ROWS 16D NAILS AT 12" O.C.
 - 2.A - (2) FLY 14" TO AND 18" TALL (INCLUSIVE); FASTEN PLYS W/ (3) ROWS 16D NAILS AT 12" O.C.
 - 3.A - (2) FLY 20" TALL AND OVER; FASTEN PLYS W/ (4) ROWS 16D NAILS AT 12" O.C.
 - 4.A - (3) FLY UP TO AND INCLUDING 11 7/8" TALL; FASTEN PLYS W/ (2) ROWS 16D NAILS AT 12" O.C. FROM EACH SIDE
 - 5.A - (3) FLY 14" TO AND 18" TALL (INCLUSIVE); FASTEN PLYS W/ (3) ROWS 16D NAILS AT 12" O.C. FROM EACH SIDE
 - 6.A - (3) FLY 20" TALL AND OVER; FASTEN PLYS W/ (4) ROWS 16D NAILS AT 12" O.C. FROM EACH SIDE
 - 7.A - (4) FLY (ALL SIZES); FASTEN PLYS W/ (2) ROWS 1/2" DIAMETER A307 BOLTS AT 24" O.C. SEE SHOP DRAWING FOR ADDITIONAL INFORMATION.

FIRST FLOOR JACK SCHEDULE

IDENTIFIER	DESCRIPTION	OPTIONS	ENG. NUM.
J101	JACK - (3) 2X6 SFF STUD GRADE		1012
J102	JACK - (3) 2X4 SFF STUD GRADE		1012
J103	JACK - (2) 2X4 SFF STUD GRADE		1020
J104	JACK - (2) 2X4 SFF STUD GRADE		1008
J105	JACK - (3) 2X6 SFF STUD GRADE		1020
J106	JACK - (3) 2X4 SFF STUD GRADE		1025
J107	JACK - (4) 2X4 SFF		1025
J109	JACK - (3) 2X4 SFF STUD GRADE	MAV	1014
J110	JACK - (3) 2X4 SFF STUD GRADE	W55, MAV	1066
J111	JACK - (3) 2X4 SFF STUD GRADE	W55, MAV	1066
J119	JACK - (2) 2X4 SFF	ELC	1029
J120	JACK - (5) 2X4 SFF	ELC	2000
J121	JACK - (2) 2X4 SFF STUD GRADE	ELC	
J122	JACK - (2) 2X4 SFF STUD GRADE	ELC	
J123	JACK - (2) 2X4 SFF STUD GRADE	ELC	
J124	JACK - (5) 2X4 SFF	ELC	2000
J127	JACK - (2) 2X4 SFF STUD GRADE	ELC	
J137	JACK - (4) 2X4 SFF		1025
J139	JACK - (3) 2X6 SFF STUD GRADE	MAA	1027
J140	JACK - (3) 2X6 SFF STUD GRADE	MAA	1027
J144	JACK - (2) 2X4 SFF STUD GRADE	GCH	1051
J145	JACK - (2) 2X4 SFF STUD GRADE	GCH	1051
J154	JACK - (2) 2X4 SFF STUD GRADE	W55, MAV	1066

STEEL COLUMN SCHEDULE

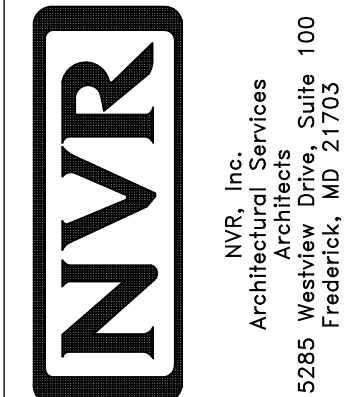
IDENTIFIER	STYLE	HEIGHT	OPTIONS	ENG. NUM.	REMARKS
C101	STANCHION - 3 IN SCHED 40	9'-2 1/8"	GCH, FBA	1025	

FIELD INSTALLED FIRST FLOOR BEAM/HEADER SCHEDULE

IDENTIFIER	DESCRIPTION	LENGTH	OPTIONS	ENG. NUM.	REMARKS
B101	BEAM STEEL - M10X30	19'-4"		1025	
B102-2	LVL - 11-14	23'-10"		1020	1.A, 2-PLY, FIELD INSTALLED
B104-2	LVL - 11-04	4'-1"		1012	
FF101	EXT HEADER - 2X12 - 2 PLY	19'-8"	GCH	1051	2-PLY, PORTAL FRAME

REVISIONS
REV. NO. DATE

NVR, Inc., owner, expressly agrees to indemnify and hold NVR, Inc. harmless from all claims, damages, losses, and expenses, including reasonable attorneys' fees, that may be asserted against or incurred by NVR, Inc. in connection with the performance of the services provided by NVR, Inc. under this contract.



SET NO. BAT00
VERSION 03
DRAWN BY
DATE:
OPTION

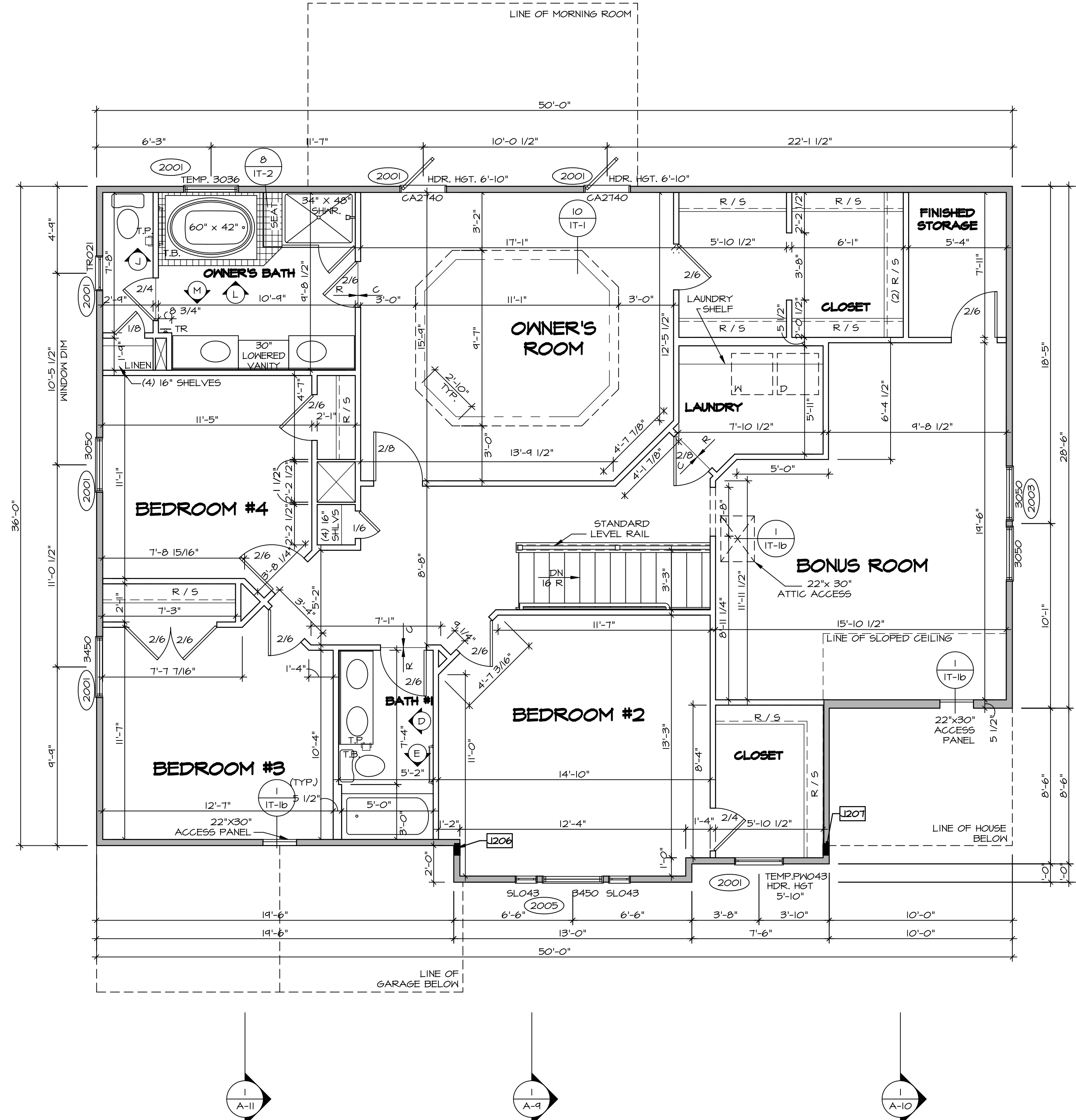
MODEL
BATEMAN
DRAWING TITLE
FIRST FLOOR PLAN
OPTION DESCRIPTION

SHEET NO.
A-7
49

SECOND FLOOR JACK SCHEDULE			
IDENTIFIER	DESCRIPTION	OPTIONS	ENG. NUM.
J206	JACK - (5) 2X4 SPM	ELC	2000
J207	JACK - (5) 2X4 SPM	ELC	2000

FLOOR PLAN NOTES

- ALL HEADERS ARE (2) 2x6 w/ 2x4 WALLS OR (3) 2x6 w/ 2x6 WALLS, UNLESS OTHERWISE NOTED.
- ALL HEADERS TO HAVE (1) 2x4 OR 2x6 JACK EACH END, UNLESS OTHERWISE NOTED.
- ALL EXTERIOR WALLS TO BE 4" AND ALL INTERIOR WALLS TO BE 3 1/2", UNLESS OTHERWISE NOTED.
- HATCHED AREAS INDICATE DROPPED CEILINGS. ALL DROPPED CEILINGS ARE 12" UNLESS OTHERWISE NOTED.
- SEE "BRACED WALL PANEL DETAIL SHEET" FOR SPECIAL WALL FRAMING LOCATIONS AND HEADER SIZES, IF APPLICABLE.
- SEE STANDARD DETAIL CATEGORY "IT" SHEET(S) FOR INTERIOR TRIM DETAILS.
- SEE ARCHITECTURAL DETAIL SHEET "AD" FOR HOUSE SPECIFIC INTERIOR TRIM OPTION TABLE.
- ALL WINDOWS HAVE 7'-0 1/2" HEADER HEIGHT UNLESS OTHERWISE NOTED.



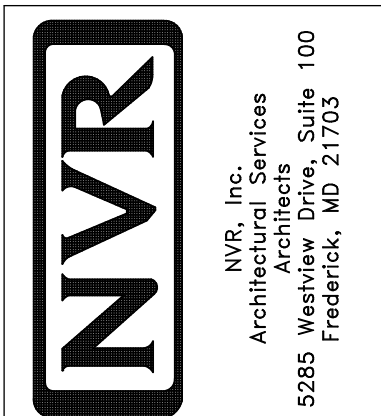
LEGEND

- BEARING WALL
 - NON BEARING WALL
 - INDICATES BEARING FROM POINT-LOAD ABOVE
 - JACKS
 - BEAM/HEADER
 - PAD FOOTING
 - STEEL COLUMN
 - PORTAL FRAME
 - JOIST/TRUSS
 - LVL
 - ENGINEERING PAGE NUMBER
- SEE FC DETAILS FOR FRAMING CONNECTORS

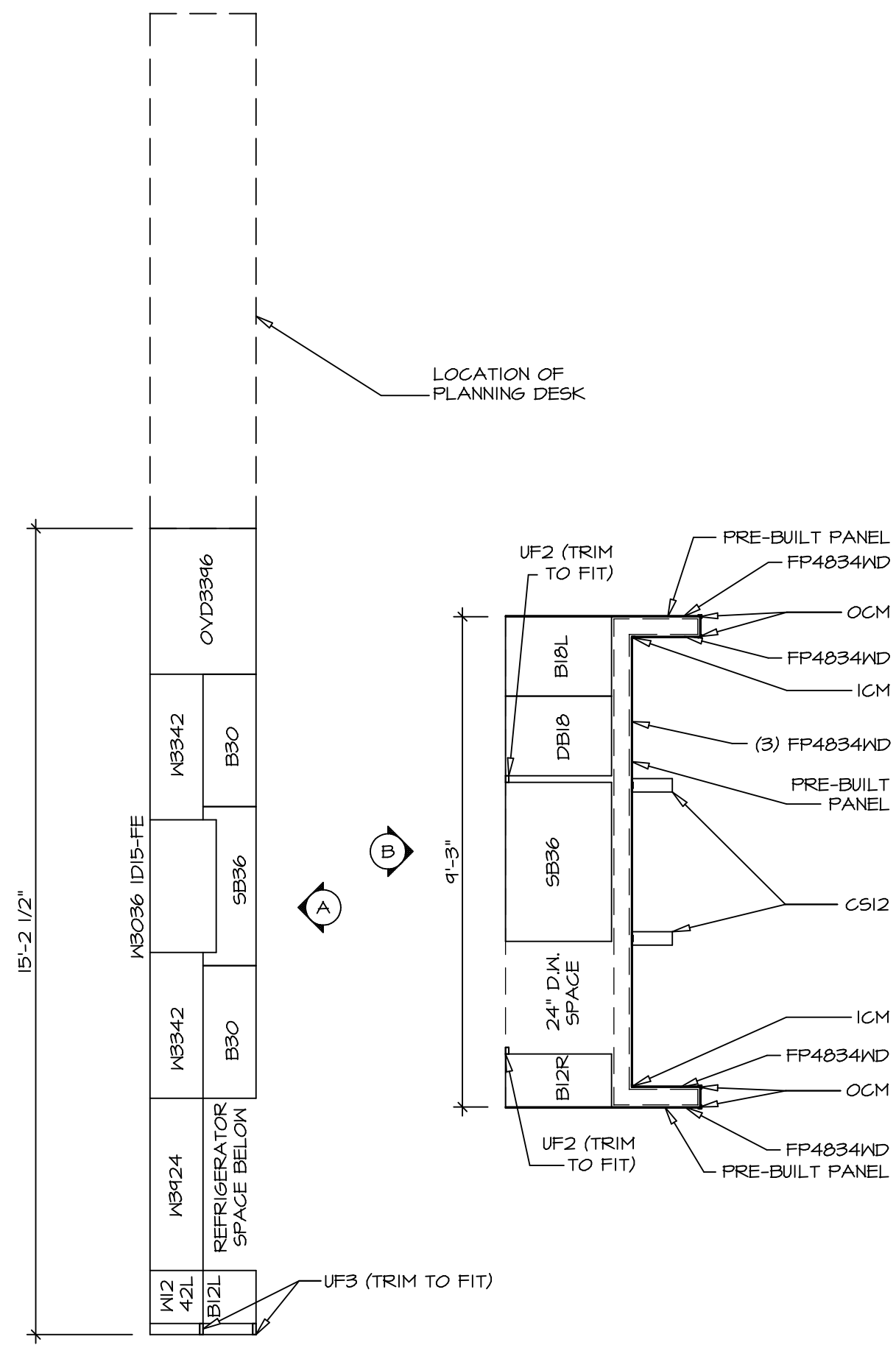
SECOND FLOOR PLAN
SCALE: 1/4" = 1'-0"

REV. NO.	DATE	REMARKS
1	7/6/17	TH - REVISED ROOF ACCESS PANELS

NVR, Inc., owner, expressly reserves its copyright in these plans. These plans are not to be reproduced, changed, copied, or otherwise used in any way without the written consent of NVR, Inc.



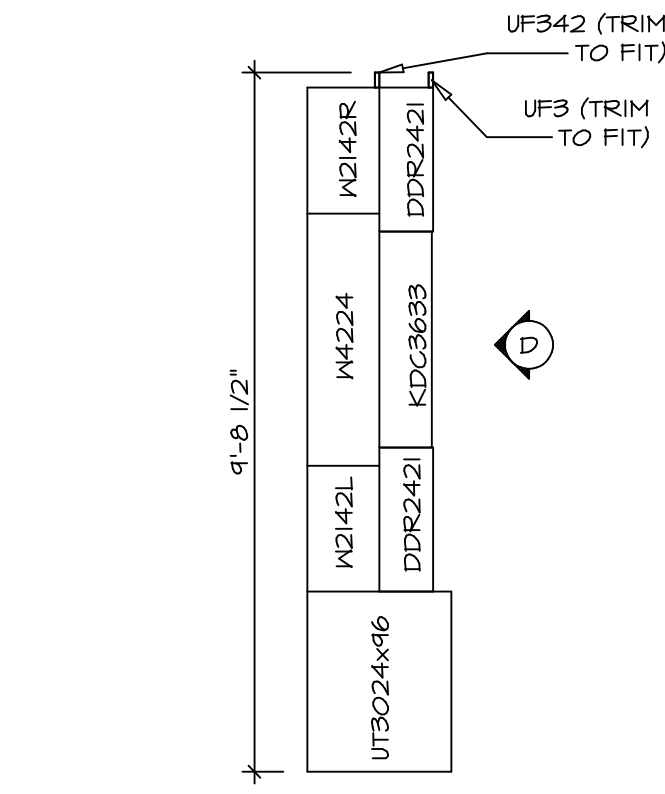
SHEET NO.	MODEL	SET NO.	VERSION	DRAWING TITLE	DATE:	OPTION
A-8	BATEMAN	BAT00	03	SECOND FLOOR PLAN		
54						



KITCHEN CABINET PLAN - KC-3148

SCALE: 3/8" = 1'-0"

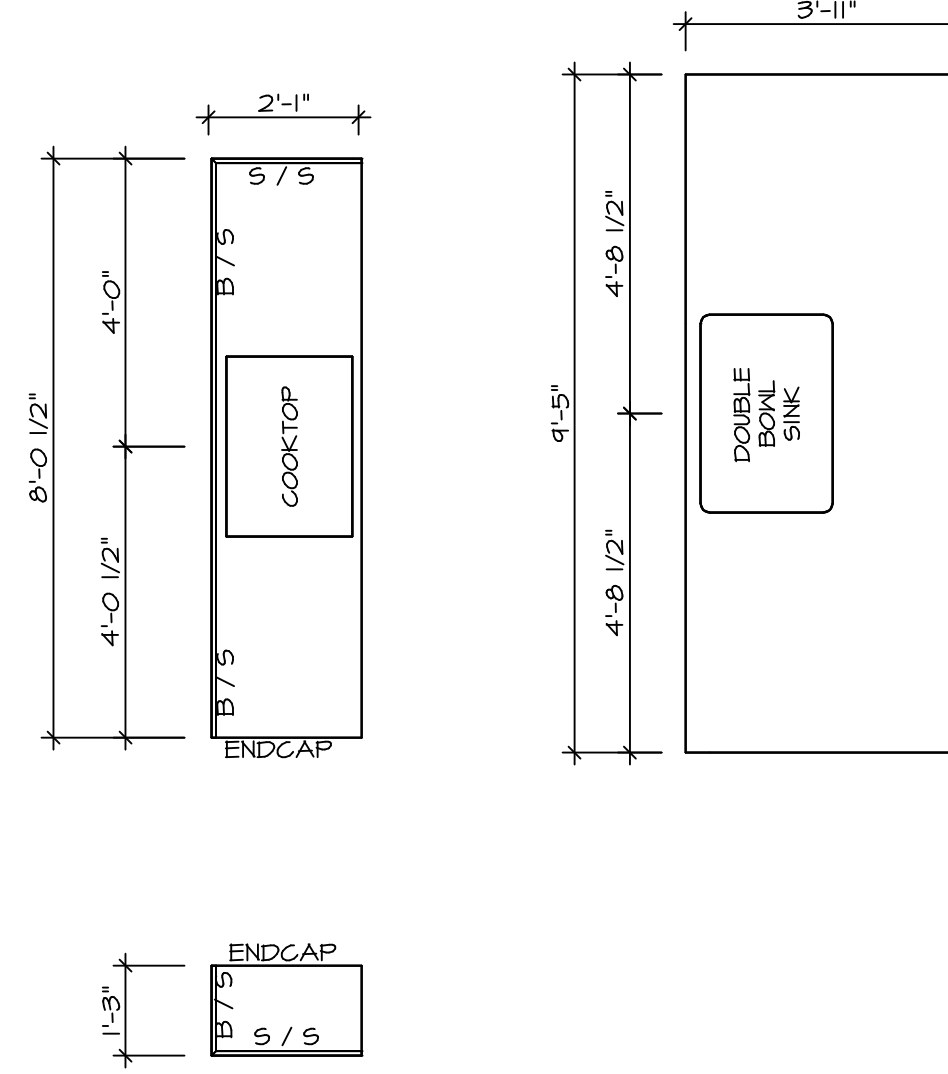
1
A-13



KITCHEN CABINET PLAN - KC-4215

SCALE: 3/8" = 1'-0"

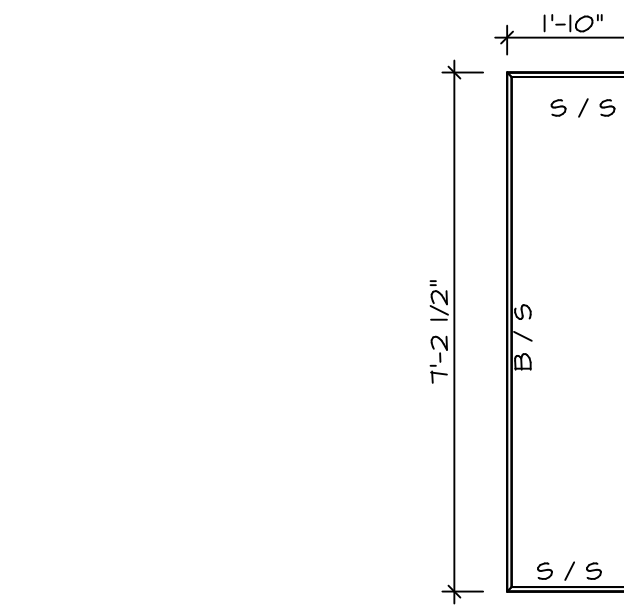
5
A-13



KITCHEN COUNTERTOP PLAN - KC-3148

SCALE: 3/8" = 1'-0"

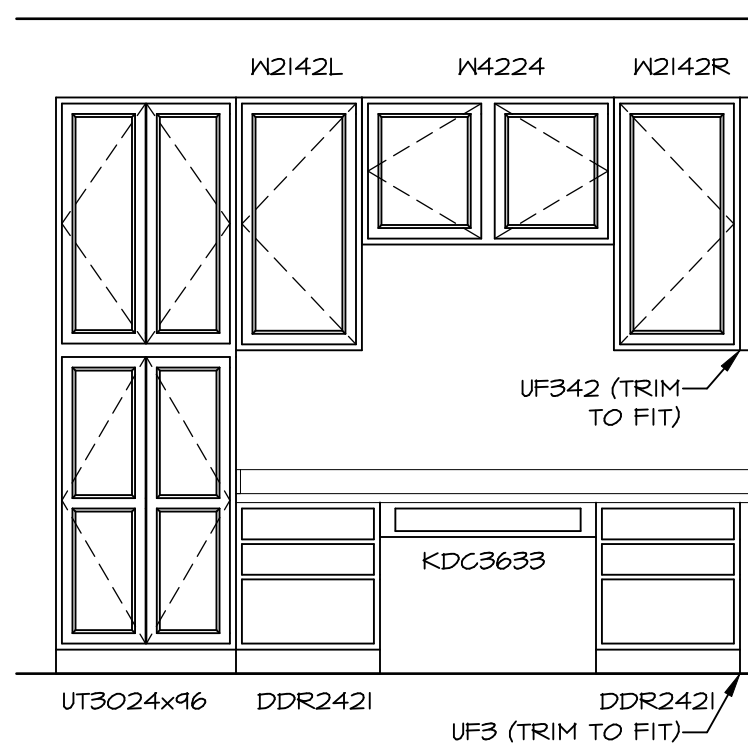
2
A-13



KITCHEN COUNTERTOP PLAN - KC-4215

SCALE: 3/8" = 1'-0"

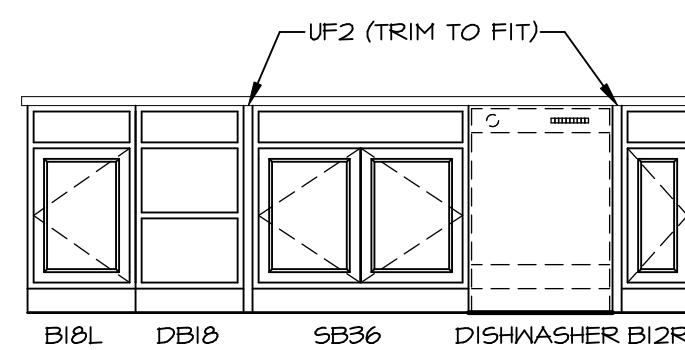
6
A-13



ELEVATION D

SCALE: 3/8" = 1'-0"

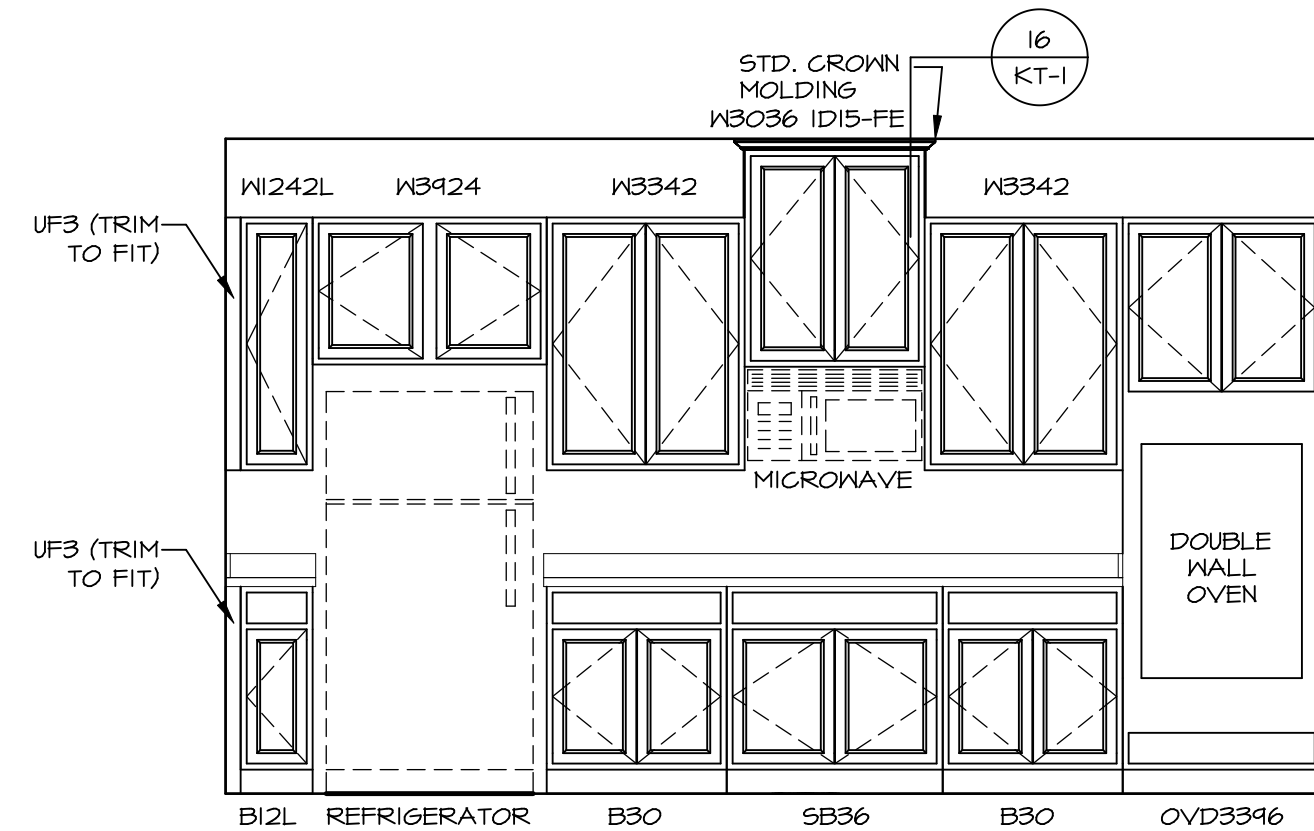
D



ELEVATION B

SCALE: 3/8" = 1'-0"

B



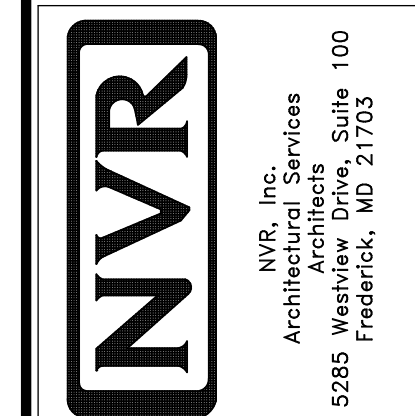
ELEVATION A

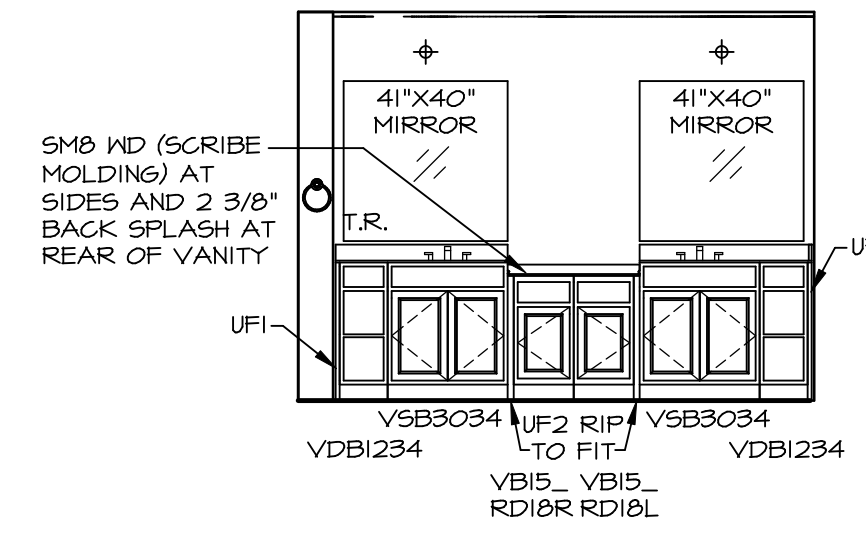
SCALE: 3/8" = 1'-0"

A

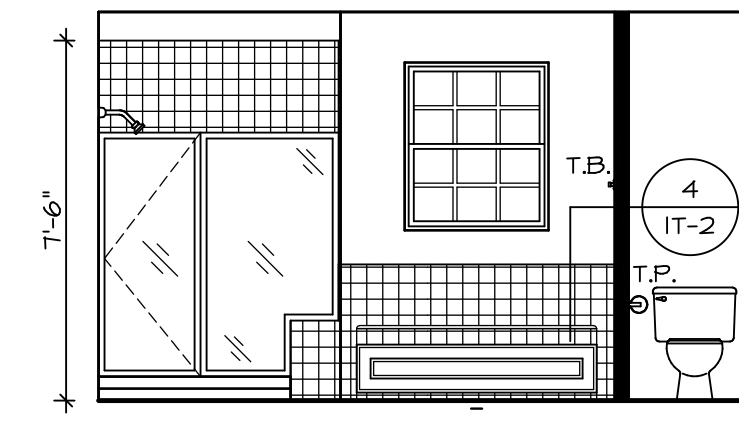
SHEET NO.	MODEL	SET NO.	BATOC	VERSION	DRAWN BY	DATE:	OPTION	REMARKS
A-13	BATEMAN	03	03	03				
65	KITCHEN PLANS							

NVR, Inc., owner, expressly reserves its copyright in these plans. These plans are not to be reproduced, changed, copied, or otherwise used in any way without the prior written consent of NVR, Inc.



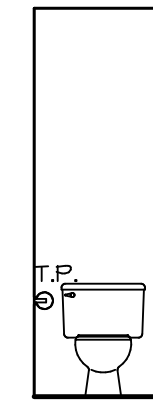


M OWNER'S BATH
SCALE: 1/4" = 1'-0"

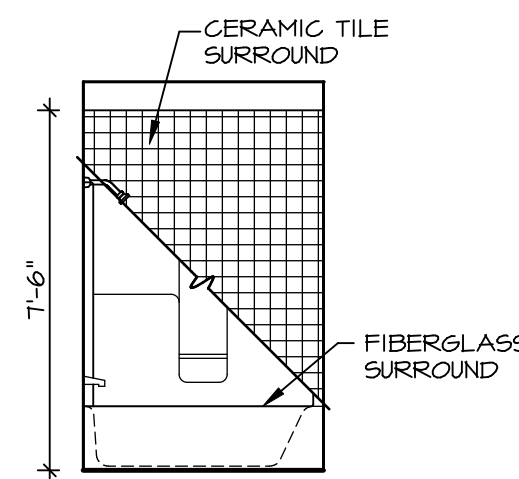


L OWNER'S BATH
SCALE: 1/4" = 1'-0"

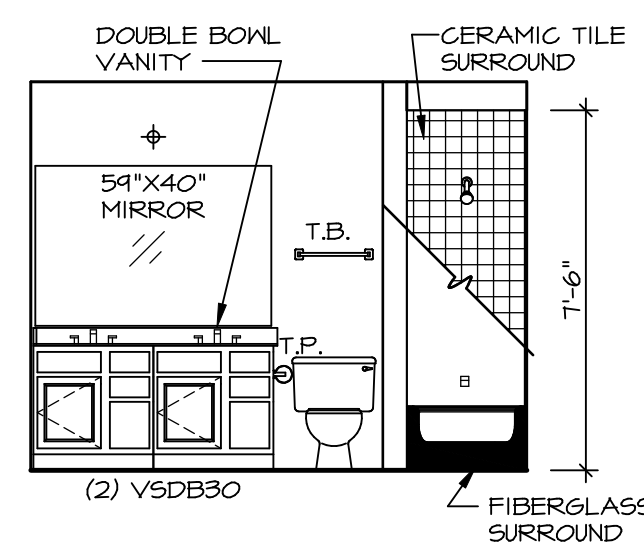
- NOTES:**
1. TEMPERED GLASS SHOWER ENCLOSURE WITH SLIDING DOOR OR OPTIONAL SLIDING DOOR BY DIVISION
 2. TUB ACCESS PANELS PROVIDED AS NEEDED, ALL MATERIALS BY DIVISION
 3. REFER TO SHEET IT-2 FOR TUB AND SHOWER DETAILS.
 4. ALL VSDDB24-42 DRAWERS TO BE SET ON RIGHT HAND.
 5. BATH ELEVATIONS ARE SHOWN PER PLAN.



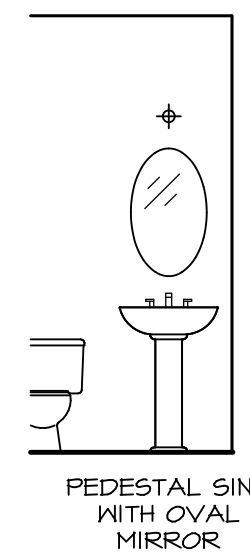
J OWNER'S BATH
SCALE: 1/4" = 1'-0"



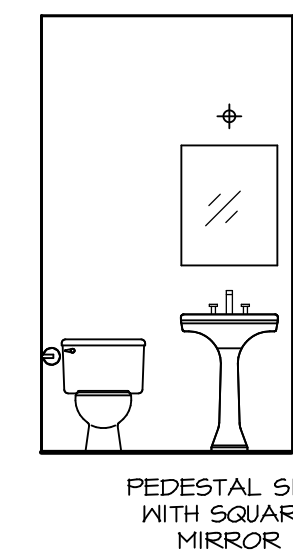
E BATH #1
SCALE: 1/4" = 1'-0"



D BATH #1
SCALE: 1/4" = 1'-0"



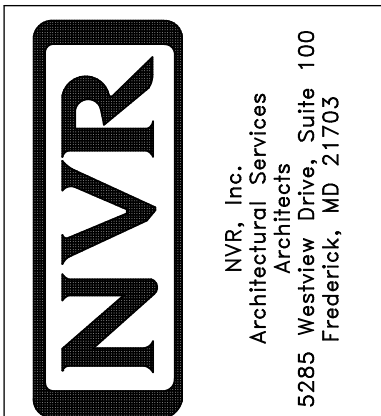
A OWNER ROOM
SCALE: 1/4" = 1'-0"

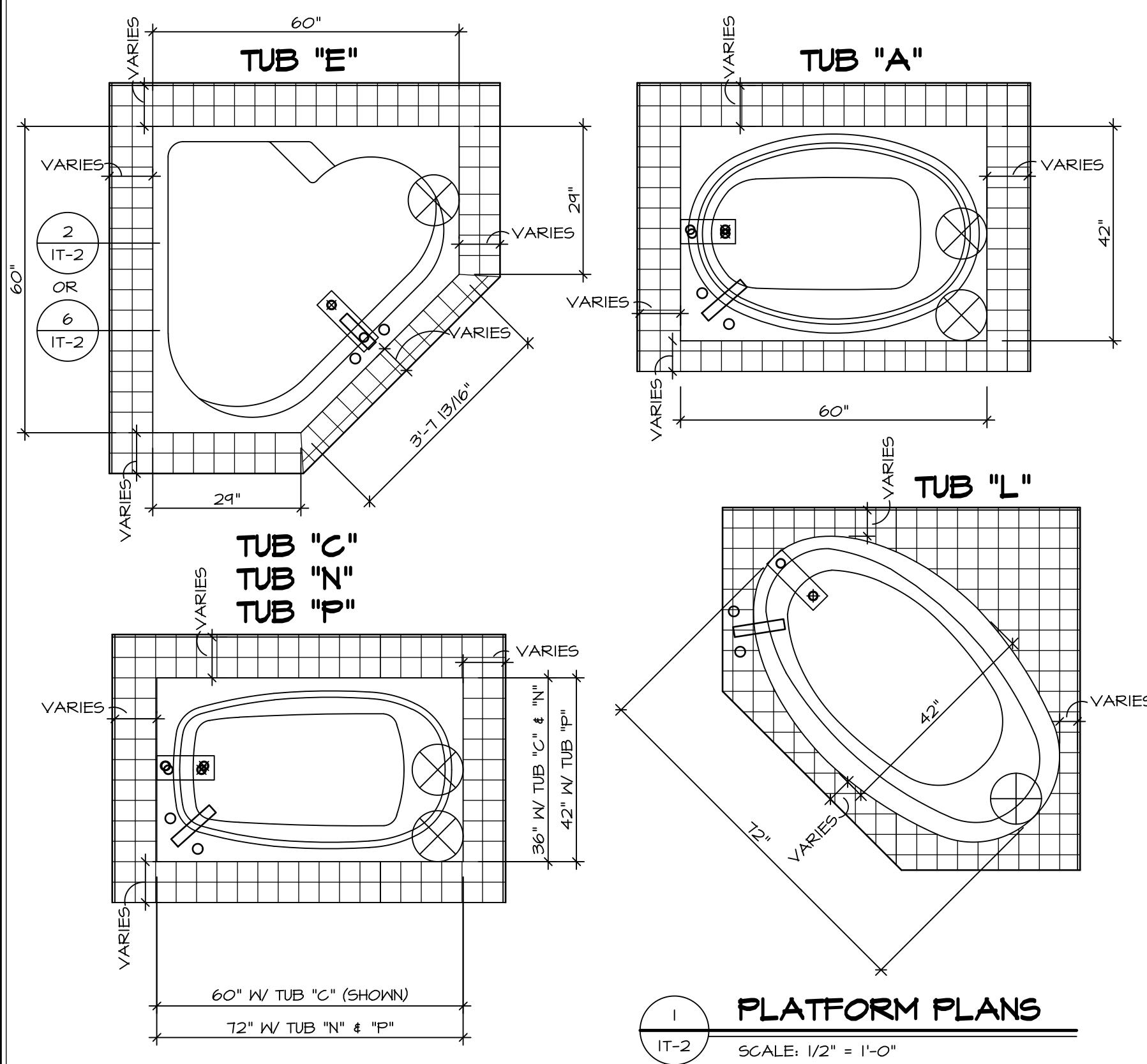


C POWDER ROOM
SCALE: 1/4" = 1'-0"

SHEET NO.	MODEL	DRAWING TITLE	OPTION DESCRIPTION	SET NO.	DATE	REV.	NO.	DATE	REMARKS
				BATEMAN	BATH ELEVATIONS	BAT00_03			
A-14									
70									

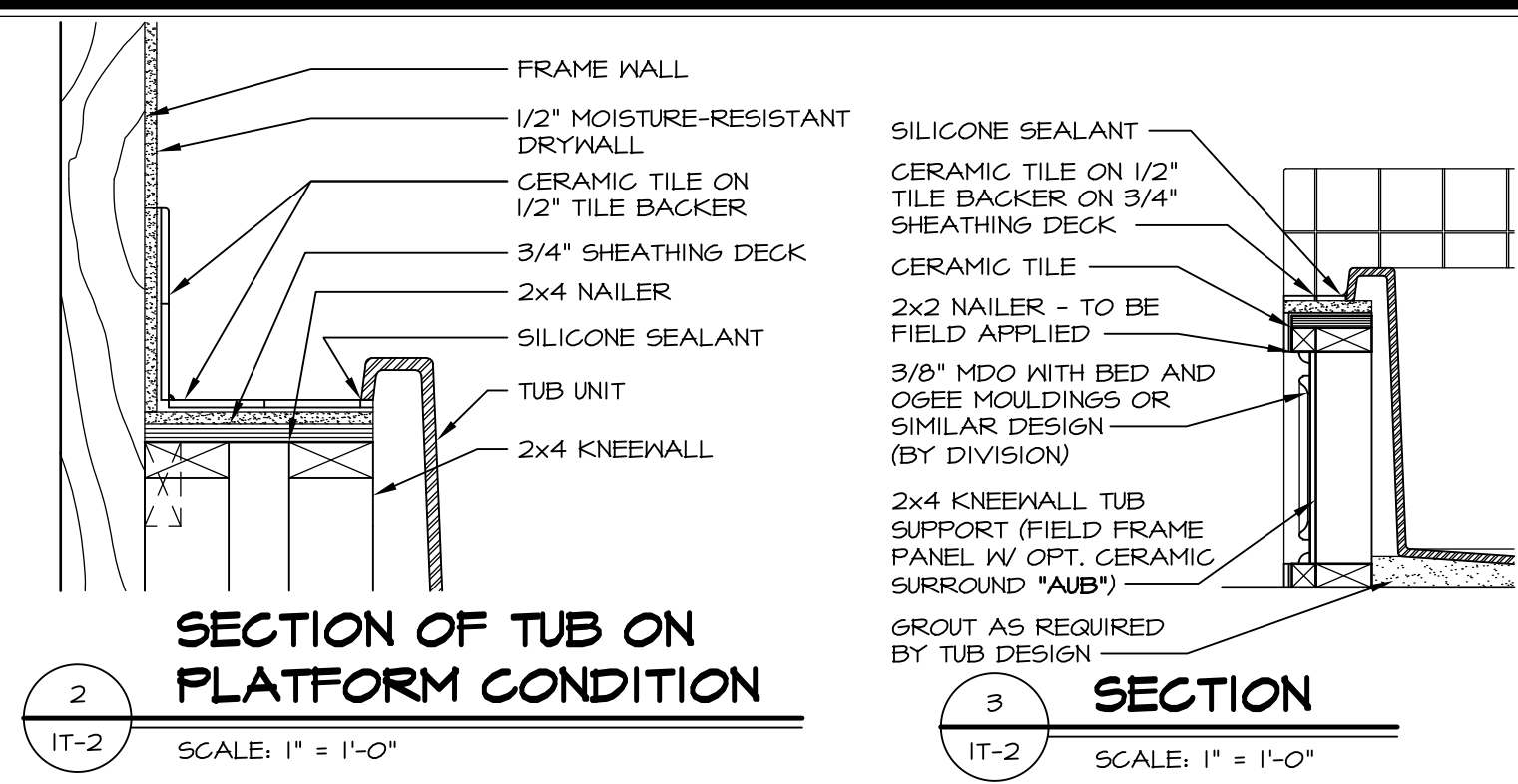
NVR, Inc., owner, expressly reserves its copyright in these plans. These plans are not to be reproduced, changed, copied in any manner, or used for any purpose not assigned to them without the written consent of NVR, Inc.



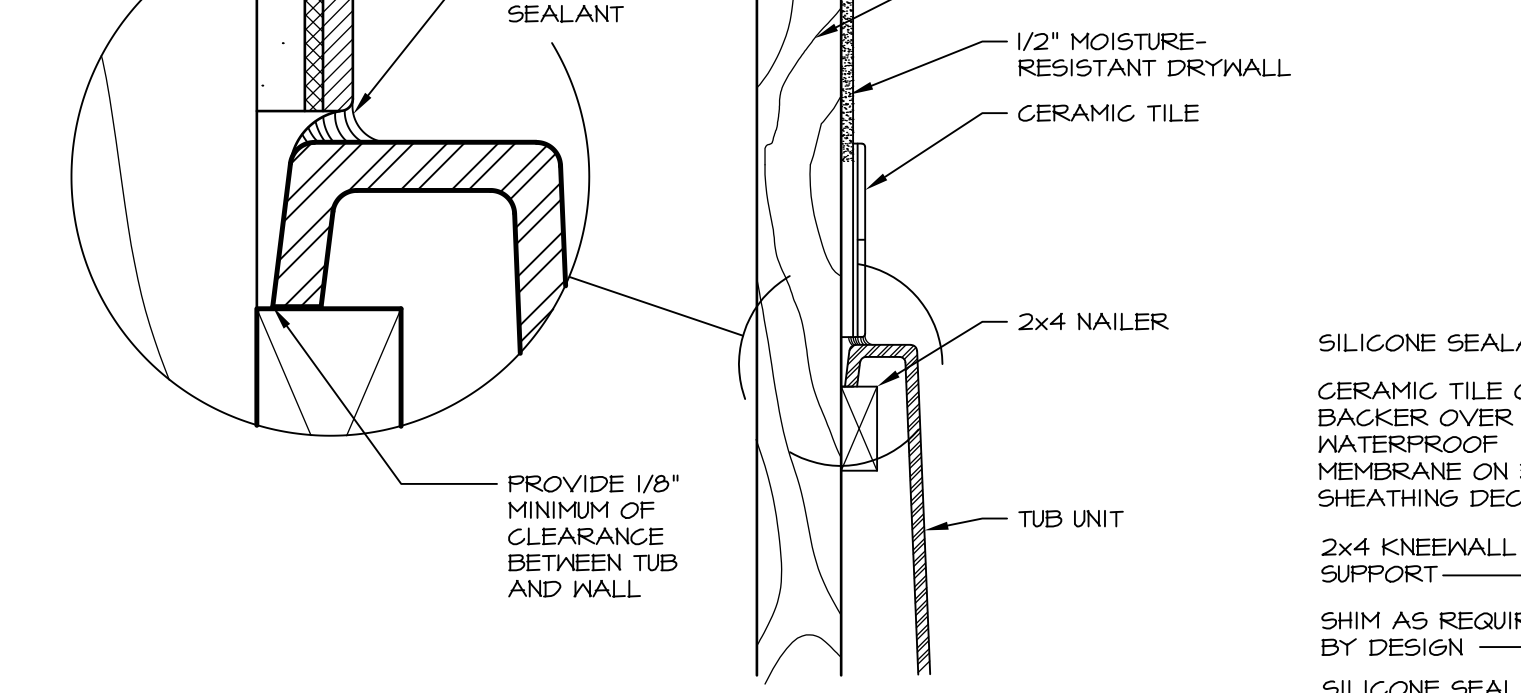


1 PLATFORM PLANS
SCALE: 1/2" = 1'-0"

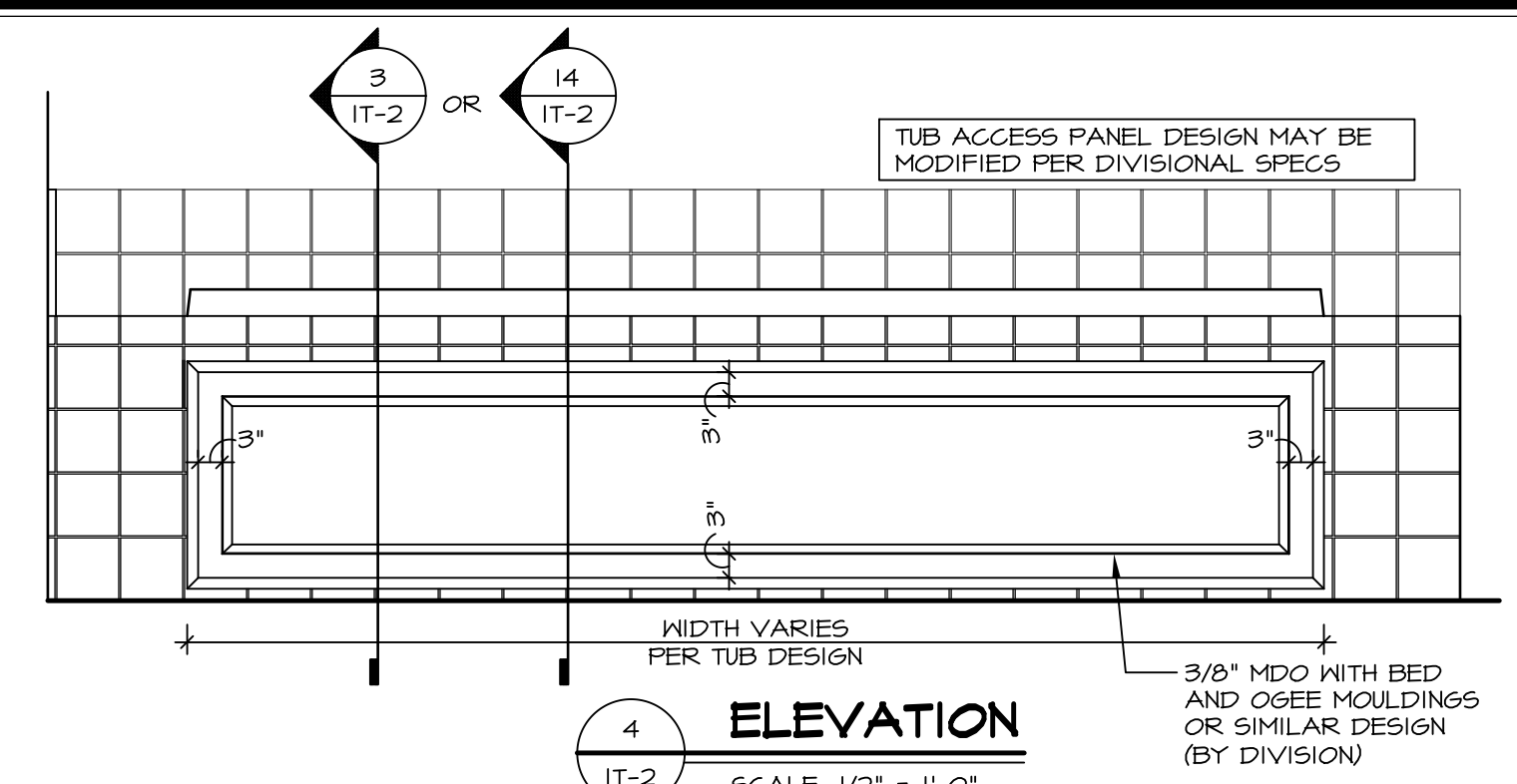
TUB	MANUF.	HEIGHT	WIDTH	LENGTH	TUB DECK PANEL HEIGHT
"A"	KOHLER/STERLING	18 3/4"	42"	60"	17 1/8"
"C"	KOHLER/STERLING	18 3/4"	36"	60"	17 1/8"
"E"	KOHLER/STERLING	19 1/2"	60"	60"	17 7/8"
"L"	KOHLER/STERLING	18 1/2"	42"	72"	16 7/8"
"N"	KOHLER/STERLING	18 3/4"	36"	72"	17 1/8"
"P"	KOHLER/STERLING	18 3/4"	42"	72"	17 1/8"



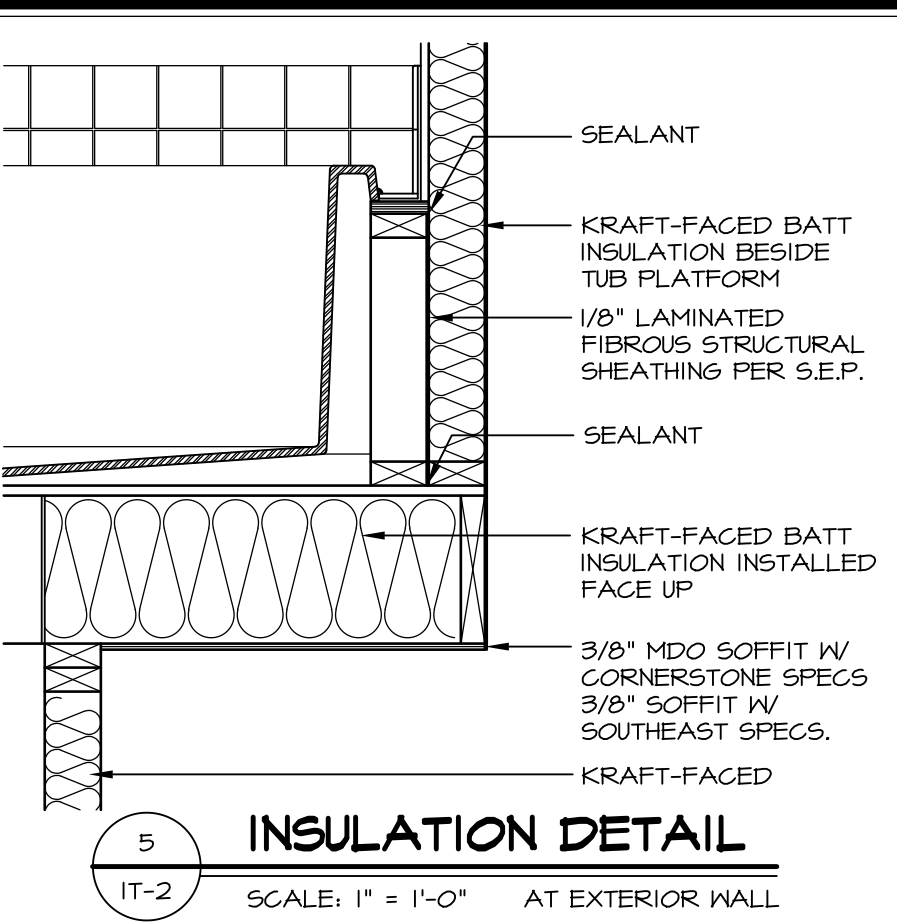
2 SECTION OF TUB ON PLATFORM CONDITION
SCALE: 1" = 1'-0"



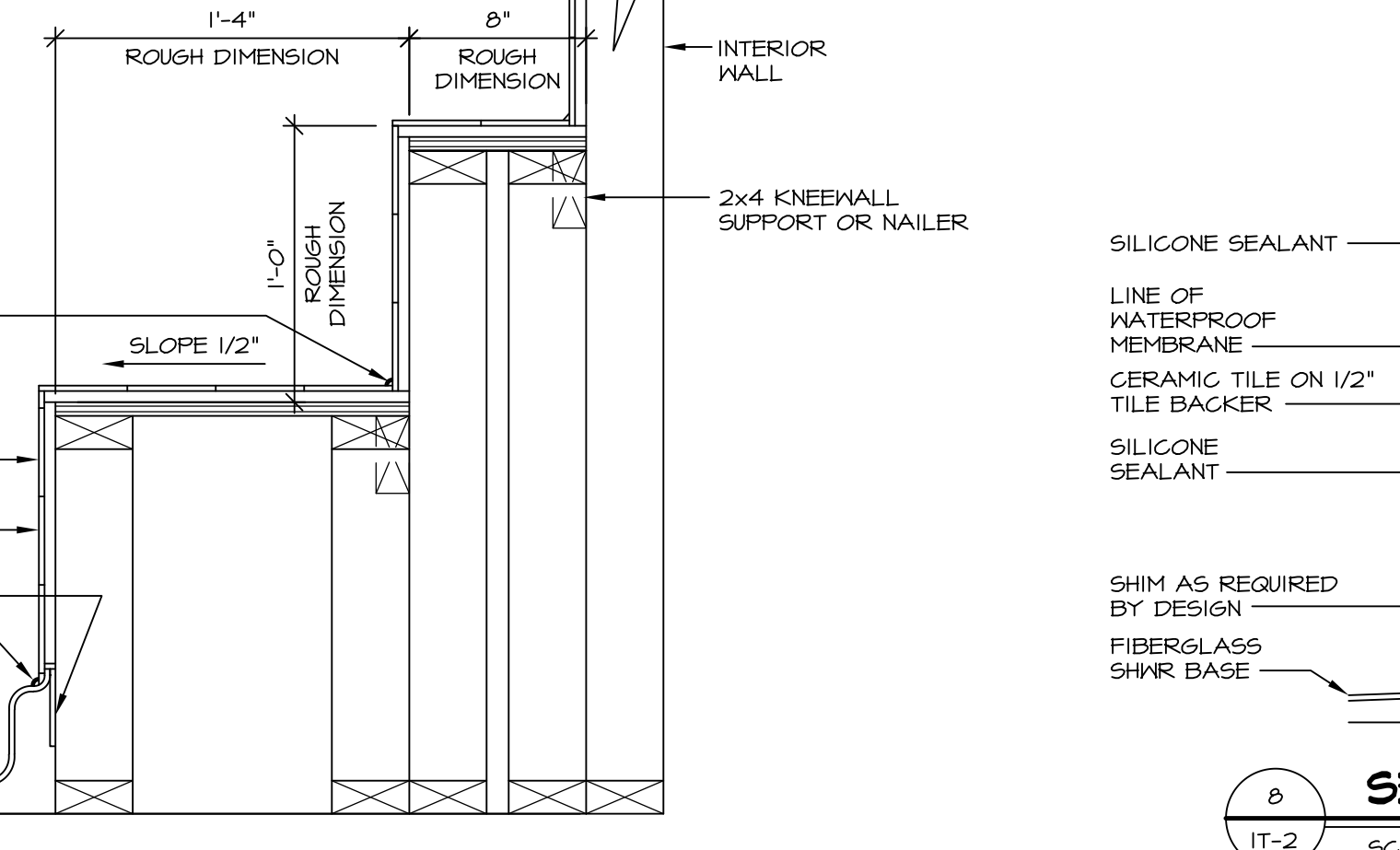
3 SECTION OF TUB TO WALL CONDITION
SCALE: 1" = 1'-0"



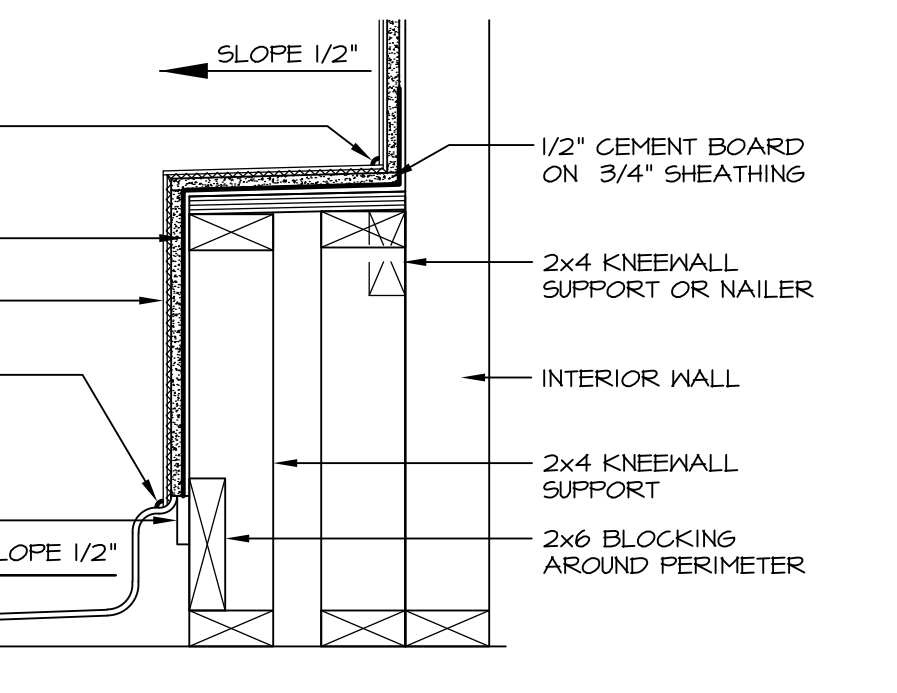
4 ELEVATION
SCALE: 1/2" = 1'-0"



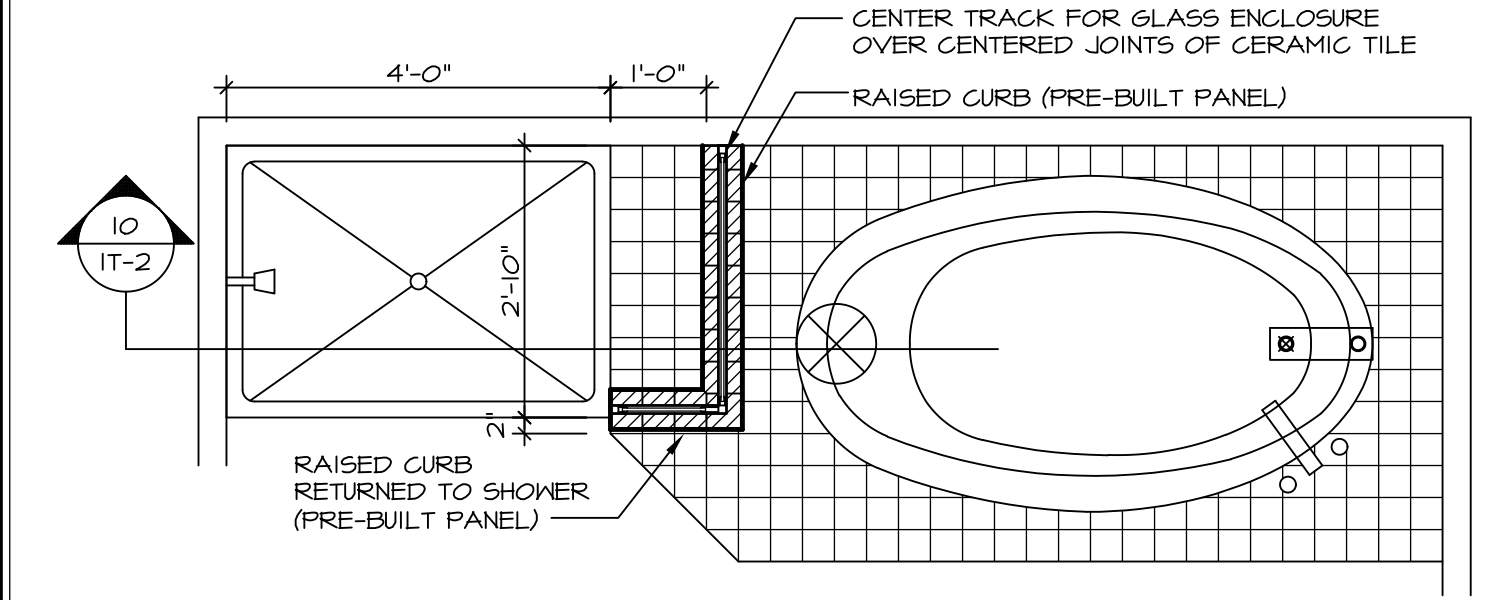
5 INSULATION DETAIL
SCALE: 1" = 1'-0" AT EXTERIOR WALL



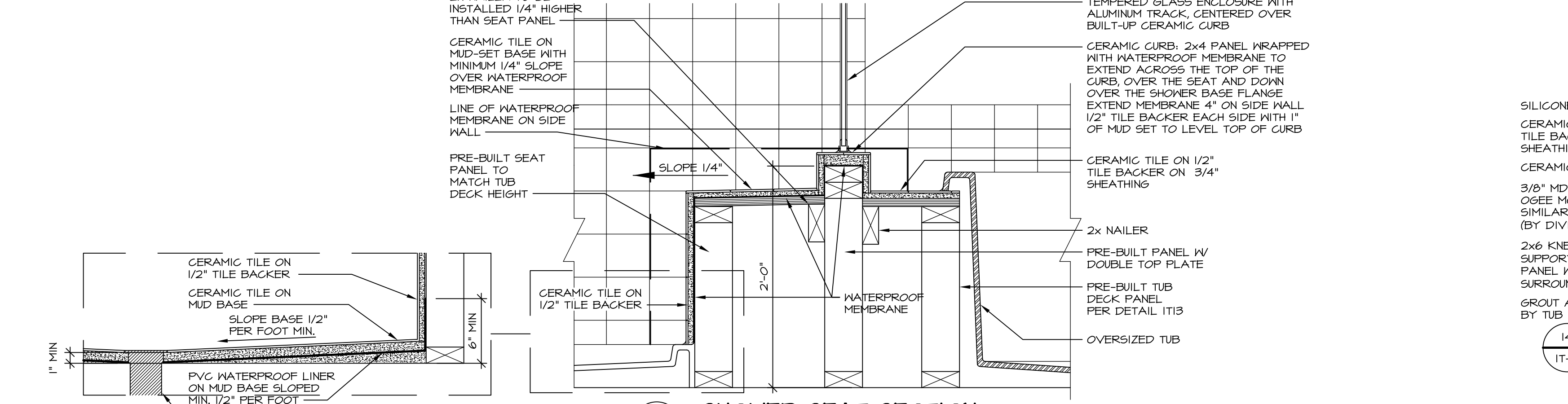
7 SECTION OF SHOWER SEAT AND SHELF
SCALE: 1/2" = 1'-0"



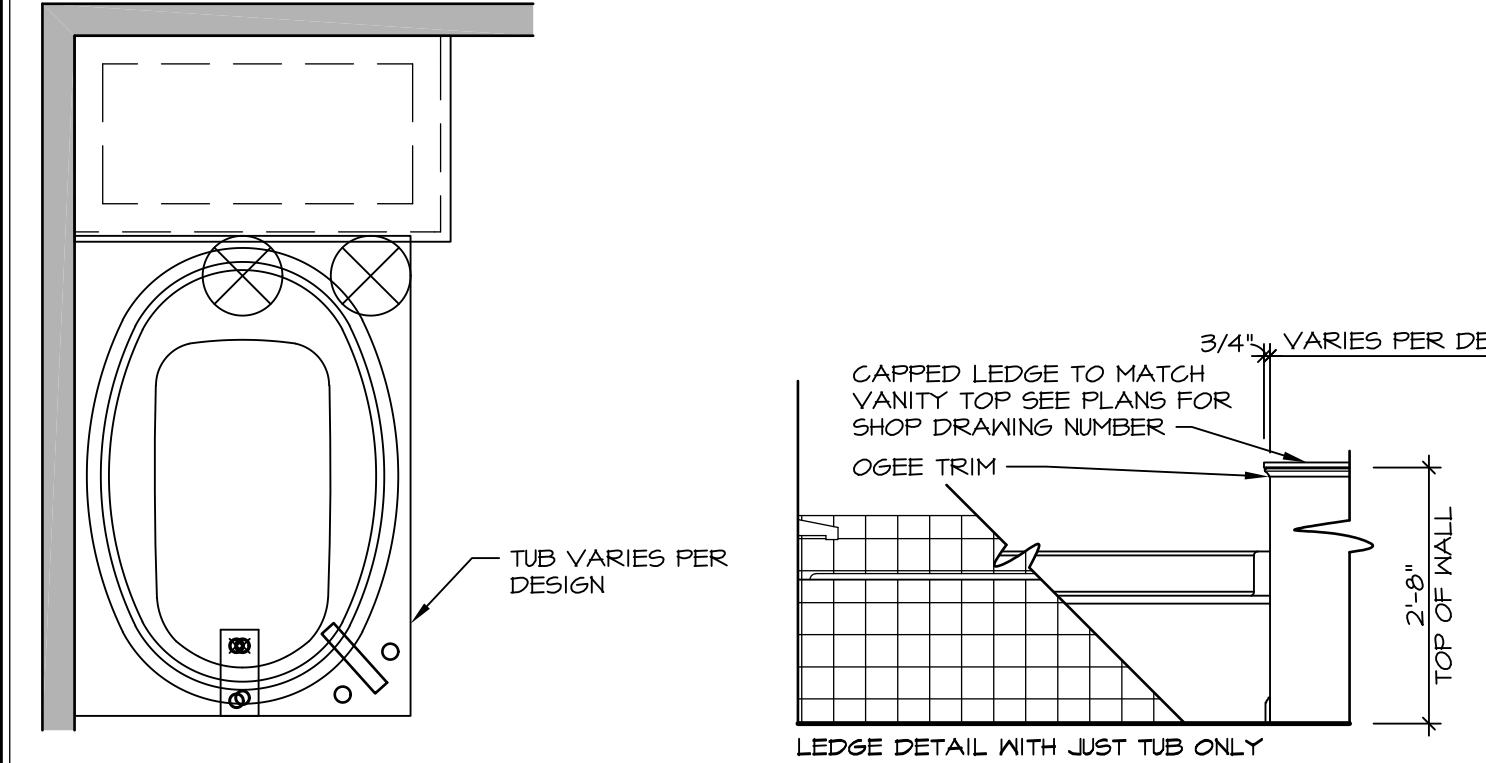
8 SECTION OF SHOWER SEAT
SCALE: 1/2" = 1'-0" FIBERGLASS SHOWER BASE



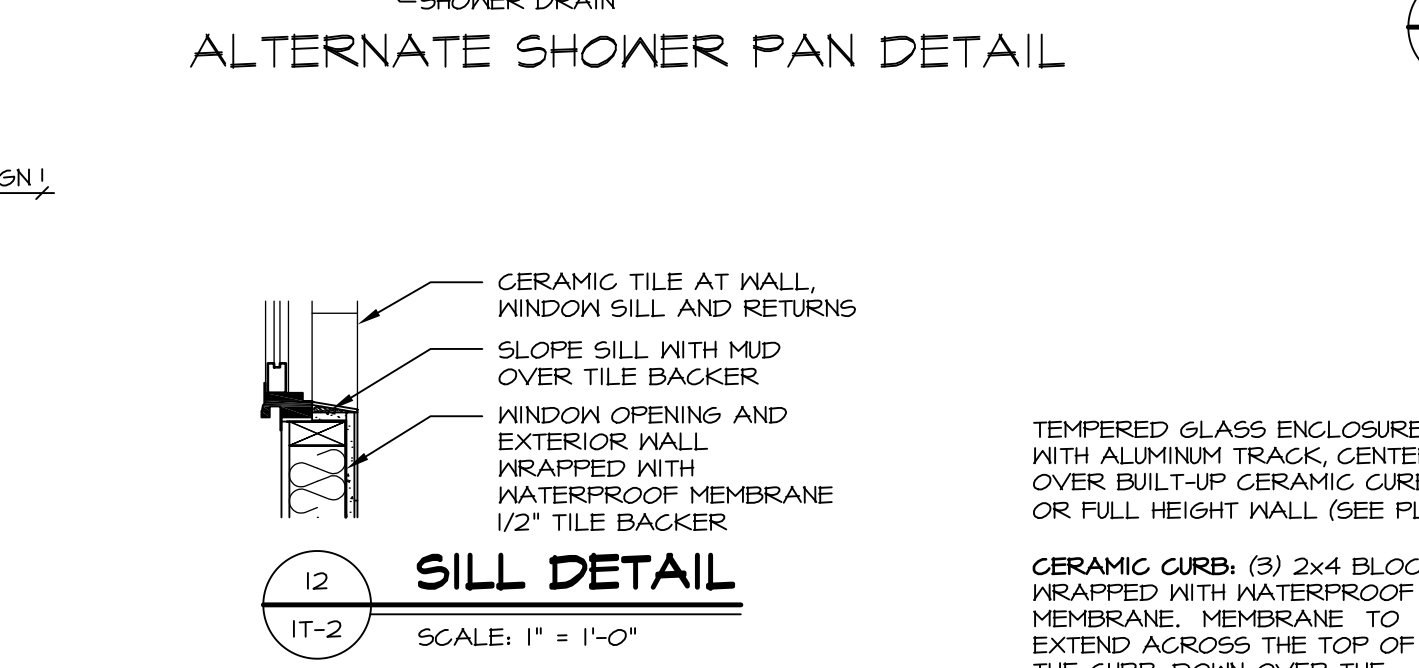
9 SHOWER SEAT PLAN / DETAIL
SCALE: 1/2" = 1'-0"



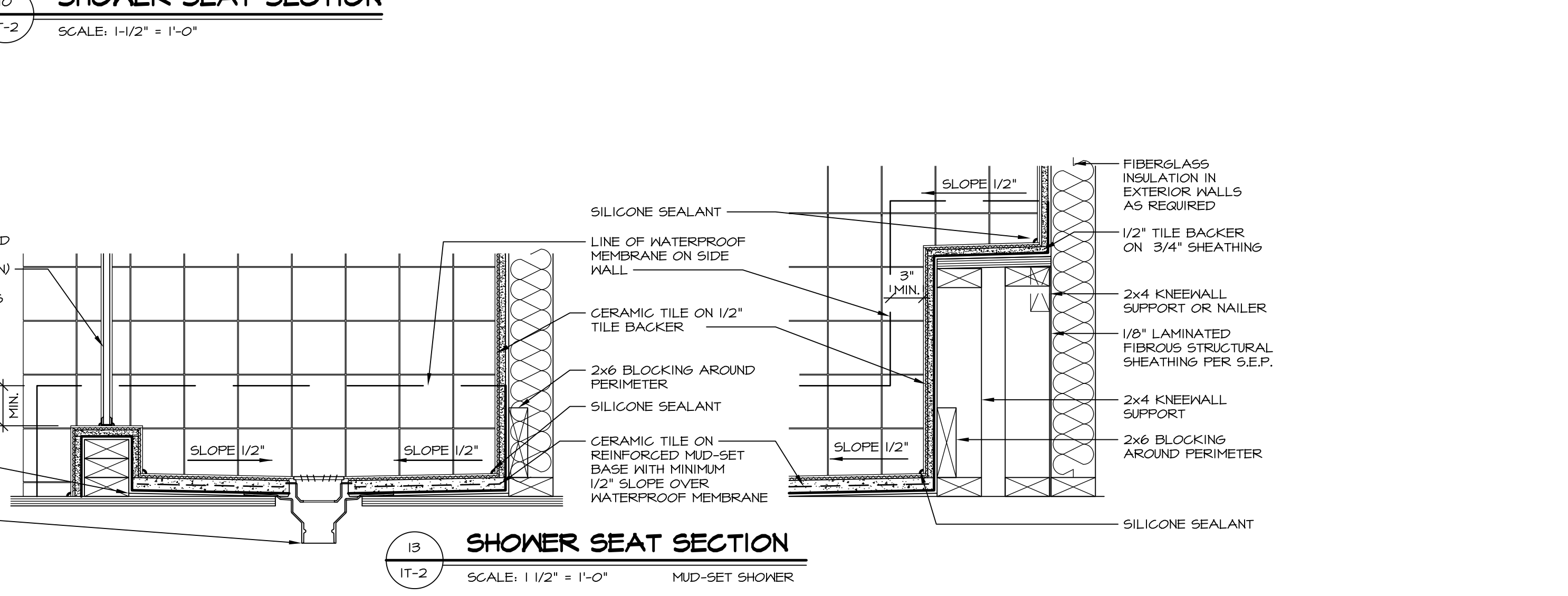
10 SHOWER SEAT SECTION
SCALE: 1/2" = 1'-0"



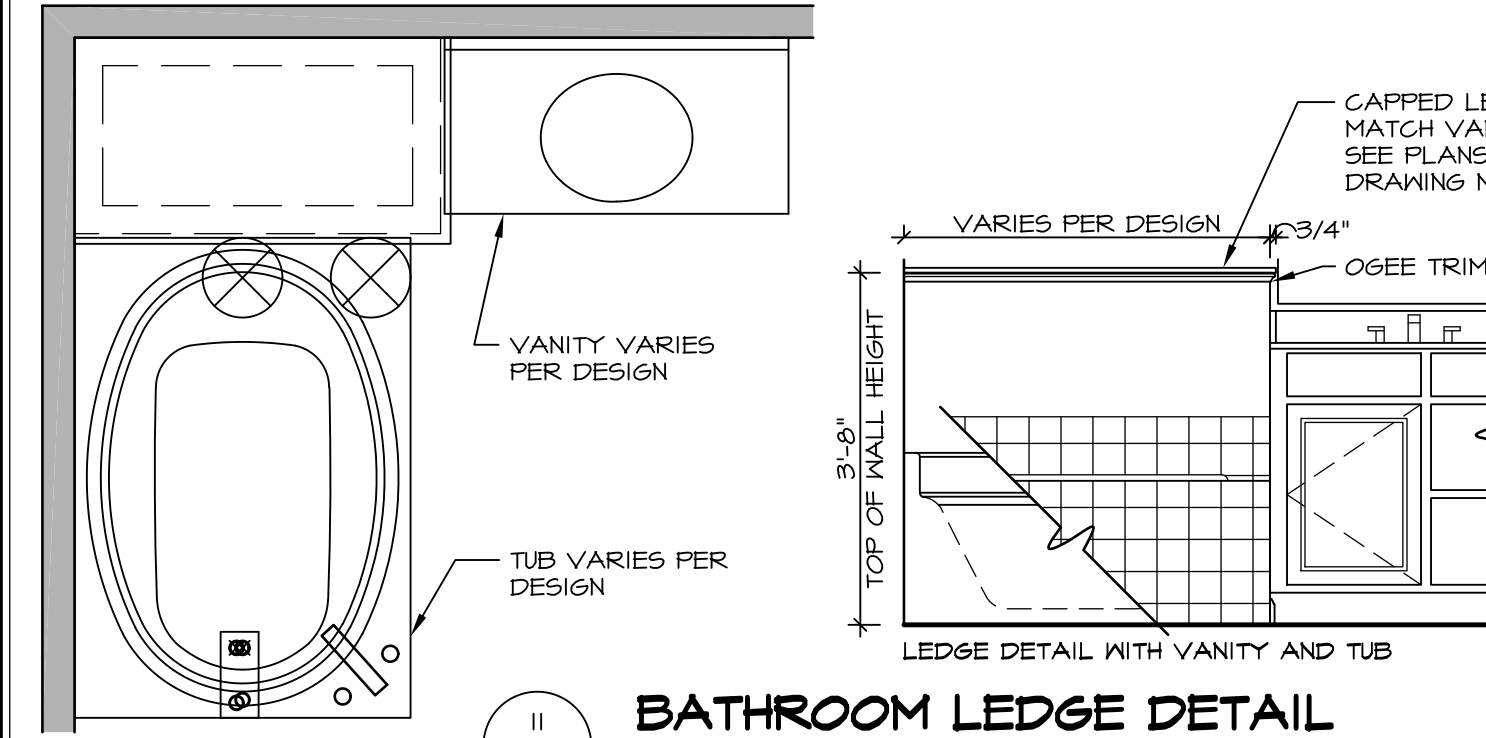
11 BATHROOM LEDGE DETAIL
SCALE: 1/2" = 1'-0"



12 SILL DETAIL
SCALE: 1" = 1'-0"



13 SHOWER SEAT SECTION
SCALE: 1/2" = 1'-0" MUD-SET SHOWER

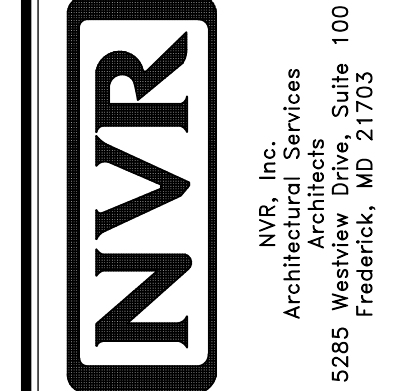


14 BATHROOM LEDGE DETAIL
SCALE: 1/2" = 1'-0"

REVISIONS

REV. NO.	DATE	DESCRIPTION
1	5/1/17	EBP - REVISED DETAIL 1 AND 11 TO REMOVE TUB ACCESS PANEL REF. (DSS #15 5414)
2	9/2/17	EBP - REVISED T-FLY NOTE TO CALL OUT LFS
3	9/2/17	EBP - REVISED NOTE ON DETAIL #1 - REVISED ORDER OF MATERIAL PARA#6934

NVR, Inc., owner, expressly reserves its common law copyright and other property rights in these plans. These plans are not to be reproduced, stored in a retrieval system, or transmitted in any form or by any means, electronic, mechanical, photocopying, recording, or by any information storage and retrieval system, without first obtaining the expressed written consent of NVR, Inc.



SET NO. NVR

VERSION

DRAWN BY

DATE:

OPTION

MODEL STANDARD DETAILS

DRAWING TITLE INTERIOR TRIM DETAILS

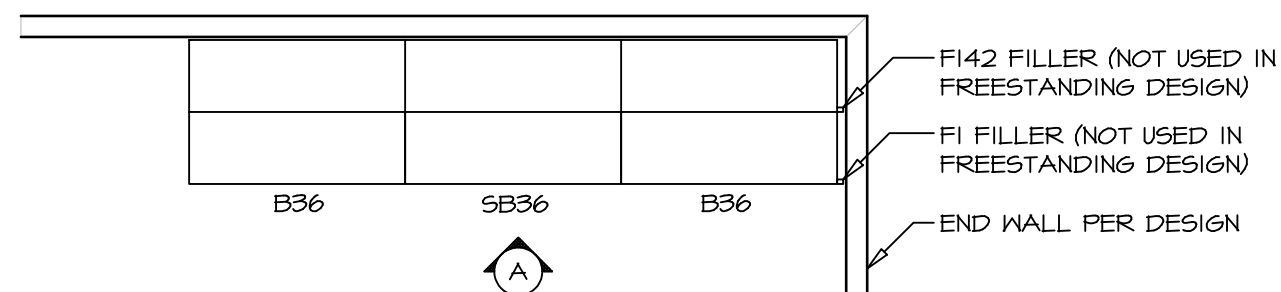
BATH DETAILS

OPTION DESCRIPTION

SHEET NO. IT-2

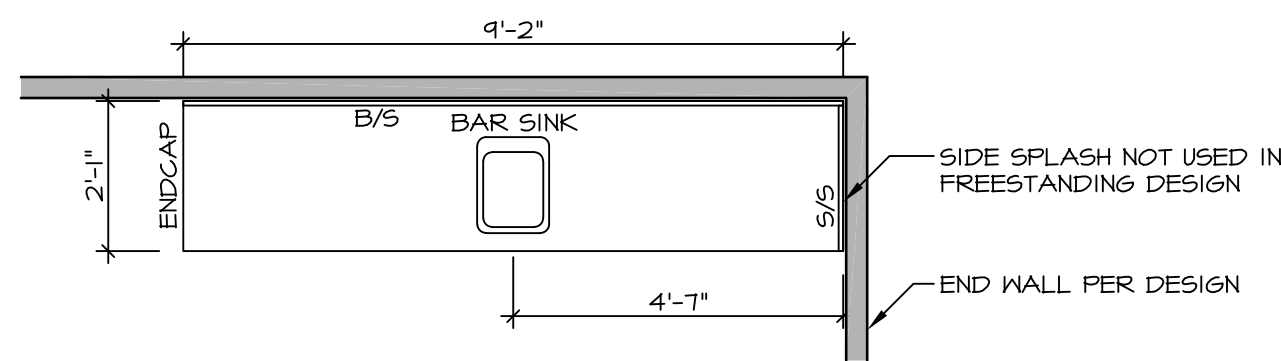
J:\Dwg\NVR\Interior Trim\IT2.dwg 09/27/17 - 9:20 am

NOTE:
REVIEW HOUSE SPECIFIC
PLANS FOR LOCATION
AND HANDING



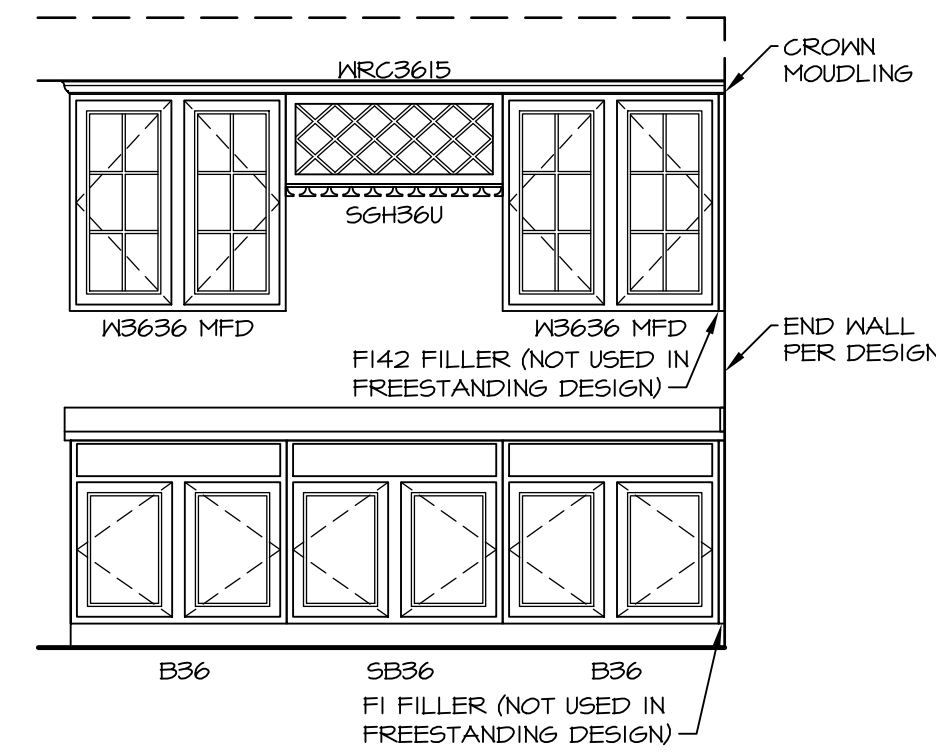
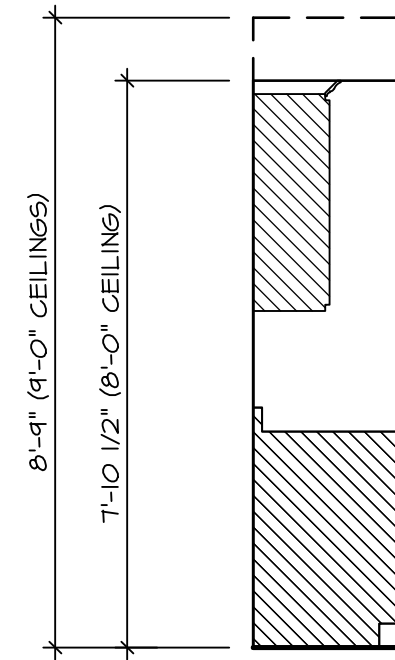
**KITCHEN CABINET
PLAN KC - 1900**

2
IT-3b SCALE: 3/8" = 1'-0"

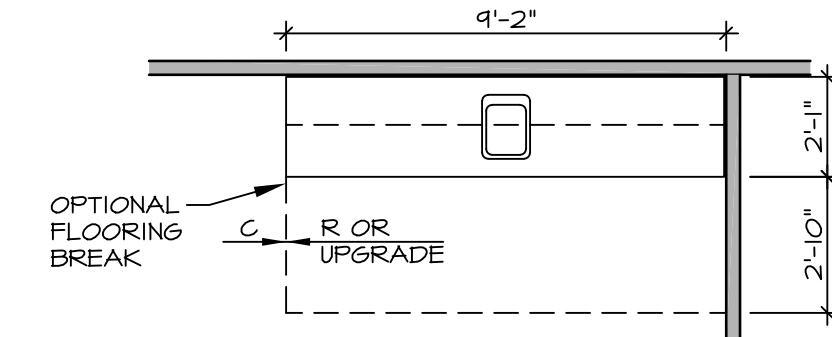


**KITCHEN COUNTERTOP
PLAN KT - 1900**

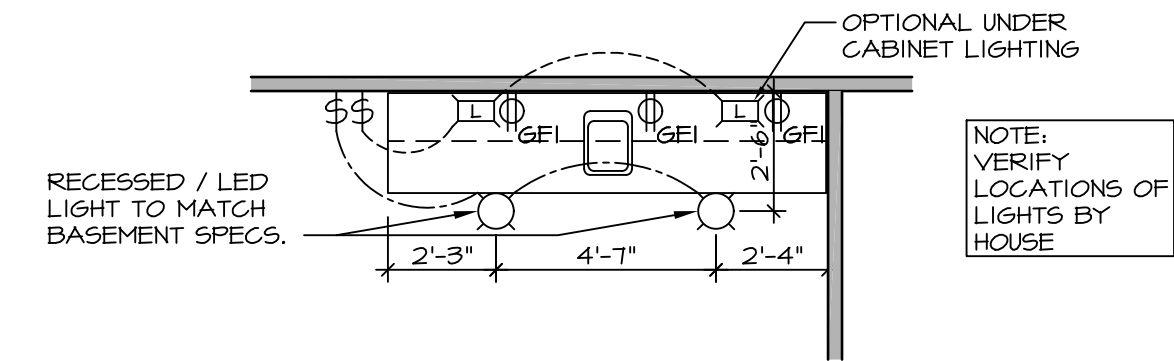
6
IT-3b SCALE: 3/8" = 1'-0"



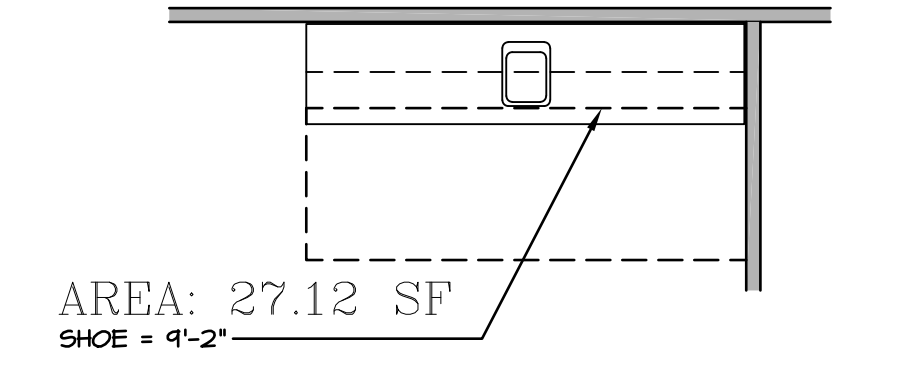
3
IT-3b **ELEVATION "A"**
SCALE: 3/8" = 1'-0"



4
IT-3b **FLOOR PLAN**
SCALE: 1/4" = 1'-0"



7
IT-3b **FLOOR PLAN ELECTRICAL LAYOUT**
SCALE: 1/4" = 1'-0"



5
IT-3b **FLOORING PLAN**
SCALE: 1/4" = 1'-0"

1
IT-3b **WET BAR DETAILS**
SCALE: VARIES * SHOWN AS END WALL DESIGN

REV. NO.	DATE	REMARKS
1	5/17/17	56A - REVISED FLOOR PLAN DIMENSIONS TO MATCH COUNTERTOP DIMENSIONS
2	5/23/17	56A - REMOVED COUNTERTOP INFORMATION FROM 2/IT-3b
3	6/5/17	56A - REMOVED U.C. REF. AND TURNED OFF FLOORING SPACES
4	9/14/17	EBP - ADDED NOTE TO RECESSED LIGHT / LED LIGHT IN NET BAR

NVR, Inc., owner, expressly reserves its common law copyright and other property rights in these plans. These plans are not to be copied, reproduced, or otherwise used in any way without the express written consent of NVR, Inc. nor are they to be assigned to any third party, without first obtaining the expressed written consent of NVR, Inc.

NVR
NVR, Inc.
Architectural Services
Architects
5285 West Annapolis Avenue, Suite 100
Frederick, MD 21703

MODEL	SET NO.	VERSION	DATE	OPTION
STANDARD DETAILS	1	1		
INTERIOR TRIM DETAILS				
WET BAR DETAILS - BACK BAR (RYAN ONLY)				
OPTION DESCRIPTION				

SHEET NO.
IT-3b