

1
A-5 PLUMBING PLAN
SCALE: 1/4" = 1'-0"

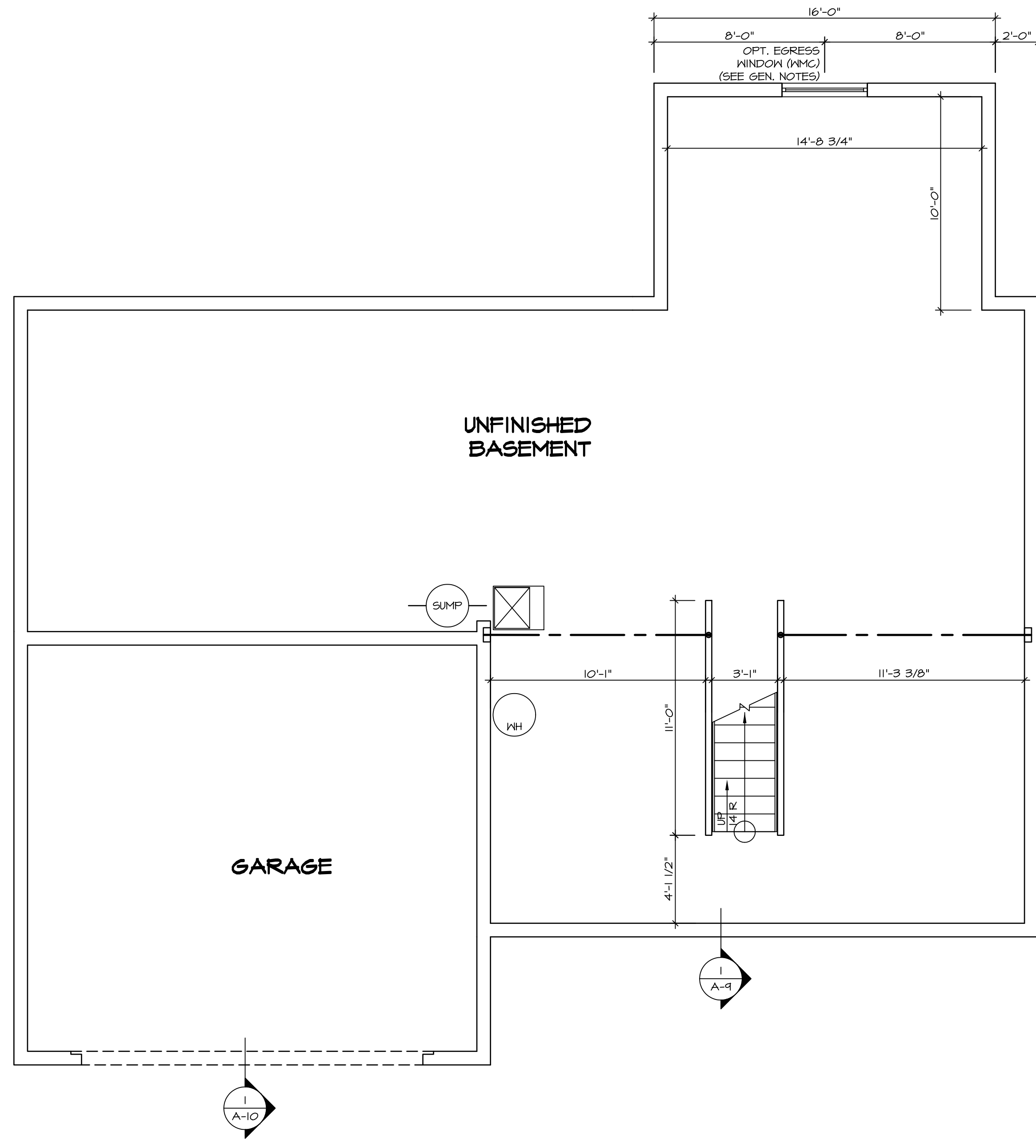
SHEET NO. A-5	MODEL PALERMO	SET NO. PALOO
OPTION DESCRIPTION 48	VERSION 03	DRAWN BY PALERMO
	DATE:	OPTION



NVR, Inc., owner, expressly reserves its common law copyright in these plans. These plans are not to be reproduced, changed, adapted, or otherwise used in any way without the prior written consent of NVR, Inc.

REV. NO. DATE

REMARKS



LEGEND

- BEARING WALL
- NON BEARING WALL
- ⊗ INDICATES BEARING FROM POINT-LOAD ABOVE
- J JACKS
- B BEAM/HEADER
- F PAD FOOTING
- C STEEL COLUMN
- X PORTAL FRAME
- X JOIST/TRUSS
- LVL LVL
- X ENGINEERING PAGE NUMBER

SEE FC DETAILS FOR FRAMING CONNECTORS

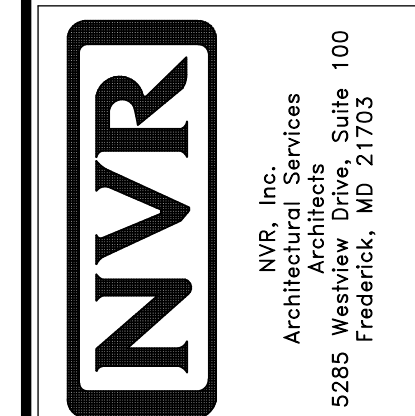
- FLOOR PLAN NOTES**
1. ALL HEADERS ARE (2) 2x6 w/ 2x4 WALLS OR (3) 2x6 w/ 2x6 WALLS, UNLESS OTHERWISE NOTED.
 2. ALL HEADERS TO HAVE (1) 2x4 OR 2x6 JACK EACH END, UNLESS OTHERWISE NOTED.
 3. ALL EXTERIOR WALLS TO BE 4" AND ALL INTERIOR WALLS TO BE 3 1/2", UNLESS OTHERWISE NOTED.
 4. HATCHED AREAS INDICATE DROPPED CEILINGS. ALL DROPPED CEILINGS ARE 12" UNLESS OTHERWISE NOTED.
 5. SEE "BRACED WALL PANEL DETAIL SHEET" FOR SPECIAL WALL FRAMING LOCATIONS AND HEADER SIZES, IF APPLICABLE.
 6. SEE STANDARD DETAIL CATEGORY "IT" SHEET(S) FOR INTERIOR TRIM DETAILS.
 7. SEE ARCHITECTURAL DETAIL SHEET "AD" FOR HOUSE SPECIFIC INTERIOR TRIM OPTION TABLE.
 8. ALL WINDOWS HAVE 7'-0 1/2" HEADER HEIGHT UNLESS OTHERWISE NOTED.
 9. ALL CASED OPENINGS AT T-11, UNLESS OTHERWISE NOTED.

- GYPSUM NOTES**
- AT GARAGE:
GYPSUM BOARD AT COMMON WALLS, CEILING, BEAM WRAPS AND SUPPORTS PER STANDARD DETAIL FA-1(b) FIRE ASSEMBLIES OR AS REQUIRED BY LOCAL CODE.
- AT STAIRS:
1/2" GYPSUM BOARD AT UNDERSIDE OF STAIRS AND WALLS IN CLOSET

BASEMENT FLOOR PLAN
SCALE: 1/4" = 1'-0"

SHEET NO. A-6	MODEL PALERMO	SET NO. PALOO	REVISIONS
OPTION DESCRIPTION 51	DRAWING TITLE BASEMENT FLOOR PLAN	VERSION 03	DATE 08/05/16
		DRAWN BY	DRAWING ALIGNMENT
		DATE:	REV. NO. DATE
		OPTION	1 08/05/16

NVR, Inc., owner, expressly reserves its common law copyright in these plans. These plans are not to be reproduced, changed, adapted in any way, or otherwise used without the prior written consent of NVR, Inc.



FIRST FLOOR JACK SCHEDULE				
IDENTIFIER	DESCRIPTION	OPTIONS	ENG. NUM.	REMARKS
J101	JACK - (2) 2x4 SPF STUD GRADE		1072	
J102	JACK - (2) 2x4 SPF STUD GRADE		1072	
J106	JACK - (2) 2x4 SPF STUD GRADE		1012	
J107	JACK - (2) 2x4 SPF STUD GRADE		1012	
J108	JACK - (2) 2x4 SPF STUD GRADE		1012	
J120	JACK - (4) 2x6 SPF STUD GRADE	MAA	1014	
J121	JACK - (3) 2x6 SPF STUD GRADE	MAA	1014	FIELD INSTALLED
J122	JACK - (3) 2x4 SPF STUD GRADE	SRH	1040	
J123	JACK - (3) 2x4 SPF STUD GRADE	SRH	1044	
J124	JACK - (3) 2x4 SPF STUD GRADE	ELD	1021	
J134	JACK - (2) 2x4 SPF STUD GRADE	MAY	1044, 1131	CRIPPLES
J140	JACK - (2) 2x4 SPF STUD GRADE	MAY	1044, 1131	CRIPPLES
J141	JACK - (3) 2x4 SPF STUD GRADE	GCC	1046	
J142	JACK - (3) 2x4 SPF STUD GRADE	GCC	1046	
J145	JACK - (3) 2x6 SPF STUD GRADE	GCC, MAY	1155	
J146	JACK - (2) 2x6 SPF STUD GRADE	GCC, MAY	1155	
J148	JACK - (6) 2x6 SPF STUD GRADE	GCC, MAY	1128	
J162	JACK - (3) 2x4 SPF STUD GRADE	EVM, MAY	1124	
J165	JACK - (3) 2x6 SPF STUD GRADE	EVM, MAY	1124	
J167	JACK - (2) 2x4 SPF STUD GRADE	L66	1082	
J168	JACK - (2) 2x4 SPF STUD GRADE	L66	1082	
J164	JACK - (3) 2x4 SPF STUD GRADE	ELD		

LVL PLY TO PLY FASTENING SCHEDULE:

- 1A - (2) FLY UP TO AND INCLUDING 1 7/8" TALL; FASTEN FLIES W/ (2) ROWS 16D NAILS AT 12" O.C.
- 2A - (2) FLY 14" TO AND INCLUDING 18" TALL (INCLUSIVE); FASTEN FLIES W/ (3) ROWS 16D NAILS AT 12" O.C.
- 3A - (2) FLY 20" TALL AND OVER; FASTEN FLIES W/ (4) ROWS 16D NAILS AT 12" O.C.
- 4A - (3) FLY UP TO AND INCLUDING 1 7/8" TALL; FASTEN FLIES W/ (2) ROWS 16D NAILS AT 12" O.C. FROM EACH SIDE
- 5A - (3) FLY 14" TO AND INCLUDING 18" TALL (INCLUSIVE); FASTEN FLIES W/ (3) ROWS 16D NAILS AT 12" O.C. FROM EACH SIDE
- 6A - (3) FLY 20" TALL AND OVER; FASTEN FLIES W/ (4) ROWS 16D NAILS AT 12" O.C. FROM EACH SIDE

FIRST FLOOR BEAM/HEADER SCHEDULE

IDENTIFIER	DESCRIPTION	LENGTH	OPTIONS	ENG. NUM.	REMARKS
B101-3	LVL - 16	14'-4 1/2"	MAA	1014	5A, FIELD INSTALL
B103	BEAM STEEL - W12X35	22'-3 1/2"	ELD, MAY	1128	
B104	BEAM STEEL - W12X14	22'-3 1/2"	ELD, EVM, MAY	1124	
PF103-3	LVL - 20	14'-8 1/2"	GCC	1061, 1146	6A, FIELD INSTALL

STEEL COLUMN SCHEDULE					
IDENTIFIER	STYLE	HEIGHT	OPTIONS	ENG. NUM.	REMARKS
C101	STANCHION - 3 IN SCHED 40	9'-0" 11/16"	FBA	1057, 1133, 1128	

LEGEND

- BEARING WALL
- NON BEARING WALL
- INDICATES BEARING FROM POINT-LOAD ABOVE
- JACKS
- BEAM/HEADER
- PAD FOOTING
- STEEL COLUMN
- PORTAL FRAME
- JOIST/TRUSS
- LVL
- ENGINEERING PAGE NUMBER

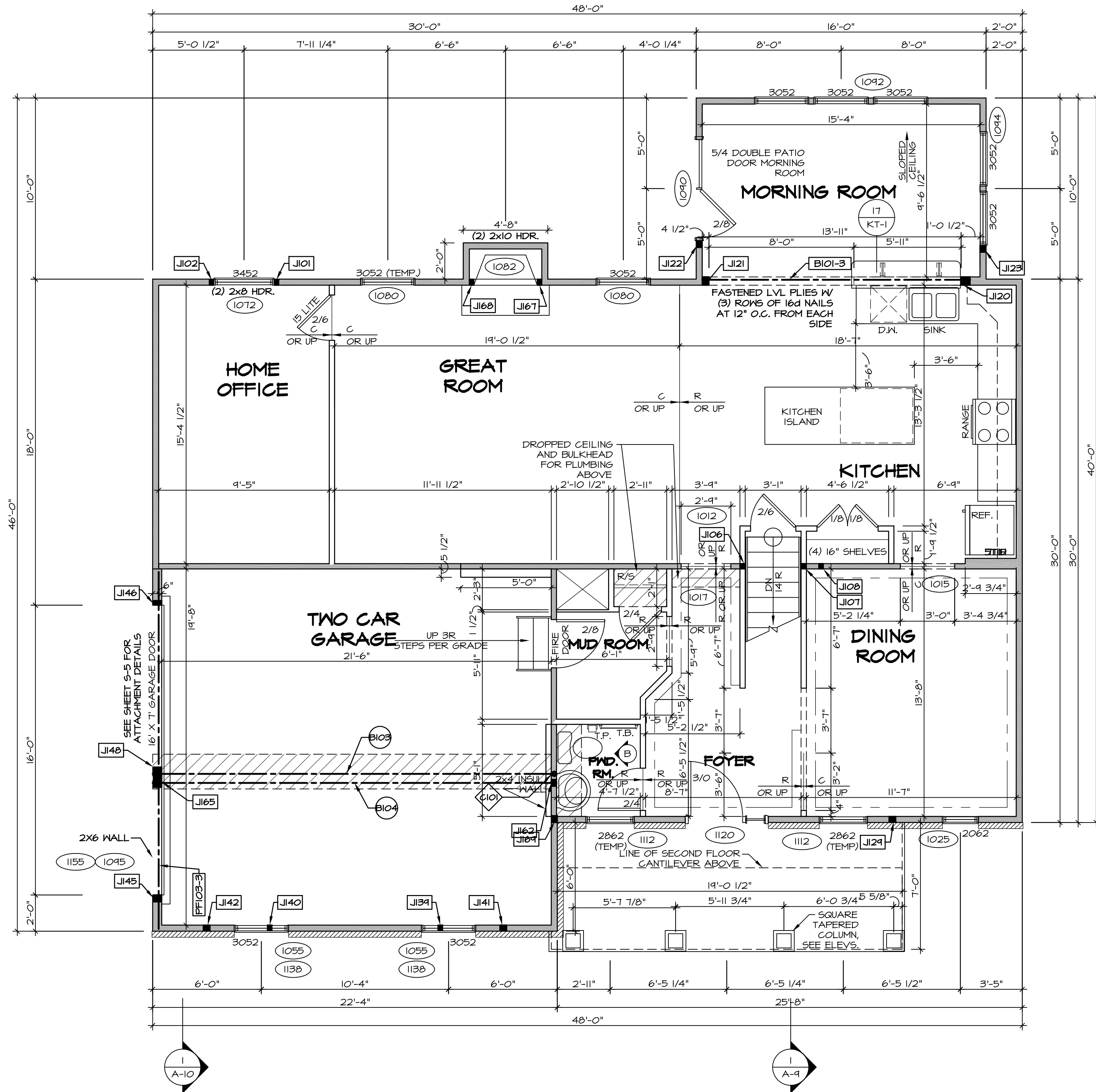
SEE FC DETAILS FOR FRAMING CONNECTORS

FLOOR PLAN NOTES

1. ALL HEADERS ARE (2) 2x6 W/ 2x4 WALLS OR (3) 2x6 W/ 2x6 WALLS, UNLESS OTHERWISE NOTED.
2. ALL HEADERS TO HAVE (1) 2x4 OR 2x6 JACK AND KING STUD EACH END, UNLESS OTHERWISE NOTED.
3. ALL EXTERIOR WALLS TO BE 4" W/ OSB OR 3 1/2" W/ T-PLY, ALL INTERIOR WALLS TO BE 3 1/2", UNLESS OTHERWISE NOTED.
4. HATCHED AREAS INDICATE DROPPED CEILINGS. ALL DROPPED CEILINGS ARE 12" UNLESS OTHERWISE NOTED.
5. SEE 'BRACED WALL PANEL DETAIL SHEET' FOR SPECIAL WALL FRAMING LOCATIONS AND HEADER SIZES, IF APPLICABLE.
6. SEE STANDARD DETAIL CATEGORY 'IT' SHEET(S) FOR INTERIOR TRIM DETAILS.
7. SEE ARCHITECTURAL DETAIL SHEET 'AD' FOR HOUSE SPECIFIC INTERIOR TRIM OPTION TABLE.
8. ALL WINDOWS HAVE 7'-0" 1/2" HEADER HEIGHT UNLESS OTHERWISE NOTED.
9. ALL HEADERS IN NON-BEARING WALLS SHALL BE A SINGLE FLAT 2X4 OR 2X6 ATTACHED TO CRIPPLES ABOVE, UNLESS OTHERWISE NOTED.

GYPSUM NOTES

- AT GARAGE:**
GYPSUM BOARD AT COMMON WALLS, CEILING, BEAM WRAPS AND SUPPORTS PER STANDARD DETAIL FA-10) FIRE ASSEMBLIES OR AS REQUIRED BY LOCAL CODE.
- AT STAIRS:**
1/2" GYPSUM BOARD AT UNDERSIDE OF STAIRS AND WALLS IN CLOSET



FIRST FLOOR PLAN
SCALE: 1/4" = 1'-0"

REV. NO.	DATE	REMARKS
1	08/04/16	TM - DRAWING ALIGNMENT
2	07/27/17	SLS - T-PLY CONVERSION PROJECT

NVR, Inc., owner, expressly reserves its copyright in the drawings. These drawings are not to be reproduced, changed, copied, or otherwise used without the prior written consent of NVR, Inc.

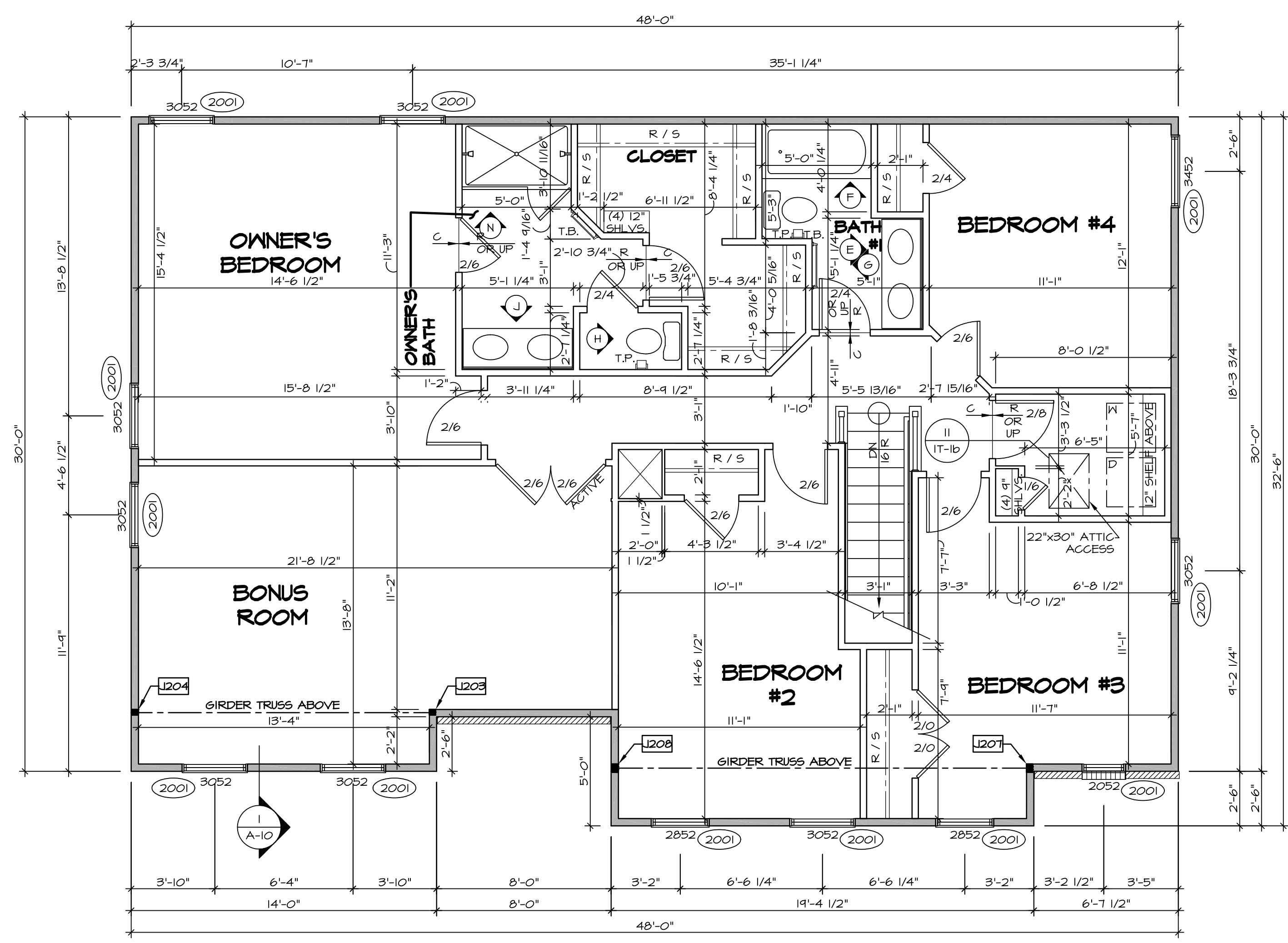
NVR, Inc.
Architectural Services
5285 Westgate Drive
Frederick, MD 21703

MODEL	SET NO. PALOO
DRAWING TITLE	VERSION 03
OPTION DESCRIPTION	DRAWN BY
	DATE:
	OPTION
SHEET NO.	A-7
	53

SECOND FLOOR JACK SCHEDULE				
IDENTIFIER	DESCRIPTION	OPTIONS	ENG. NUM.	REMARKS
J203	JACK - (2) 2X4 SPM	MAY	2011	EXTEND JACKS THROUGH TOP PLATE
J204	JACK - (2) 2X4 SPM	MAY	2011	EXTEND JACKS THROUGH TOP PLATE
J207	JACK - (3) 2X4 SPM	ELD	2011	EXTEND JACKS THROUGH TOP PLATE
J208	JACK - (3) 2X4 SPM	ELD	2011	EXTEND JACKS THROUGH TOP PLATE

LEGEND	
	BEARING WALL
	NON BEARING WALL
	INDICATES BEARING FROM POINT-LOAD ABOVE
	JACKS
	BEAM/HEADER
	PAD FOOTING
	STEEL COLUMN
	PORTAL FRAME
	JOIST/TRUSS
	LVL
	ENGINEERING PAGE NUMBER

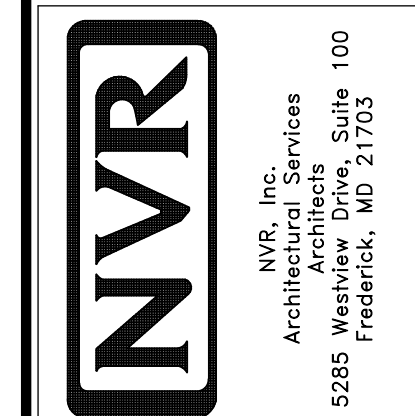
- FLOOR PLAN NOTES**
- ALL HEADERS ARE (2) 2x6 w/ 2x4 WALLS OR (3) 2x6 w/ 2x6 WALLS, UNLESS OTHERWISE NOTED.
 - ALL HEADERS TO HAVE (1) 2x4 OR 2x6 JACK AND KING STUD EACH END, UNLESS OTHERWISE NOTED.
 - ALL EXTERIOR WALLS TO BE 4" w/ OSB OR 3 1/2" w/ T-PLY, ALL INTERIOR WALLS TO BE 3 1/2", UNLESS OTHERWISE NOTED.
 - HATCHED AREAS INDICATE DROPPED CEILINGS. ALL DROPPED CEILINGS ARE 12" UNLESS OTHERWISE NOTED.
 - SEE "BRACED WALL PANEL DETAIL SHEET" FOR SPECIAL WALL FRAMING LOCATIONS AND HEADER SIZES, IF APPLICABLE.
 - SEE STANDARD DETAIL CATEGORY "IT" SHEET(S) FOR INTERIOR TRIM DETAILS.
 - SEE ARCHITECTURAL DETAIL SHEET "AD" FOR HOUSE SPECIFIC INTERIOR TRIM OPTION TABLE.
 - ALL WINDOWS HAVE 7'-0 1/2" HEADER HEIGHT UNLESS OTHERWISE NOTED.
 - ALL HEADERS IN NON-BEARING WALLS SHALL BE A SINGLE FLAT 2x4 OR 2x6 ATTACHED TO CRIPPLES ABOVE, UNLESS OTHERWISE NOTED.



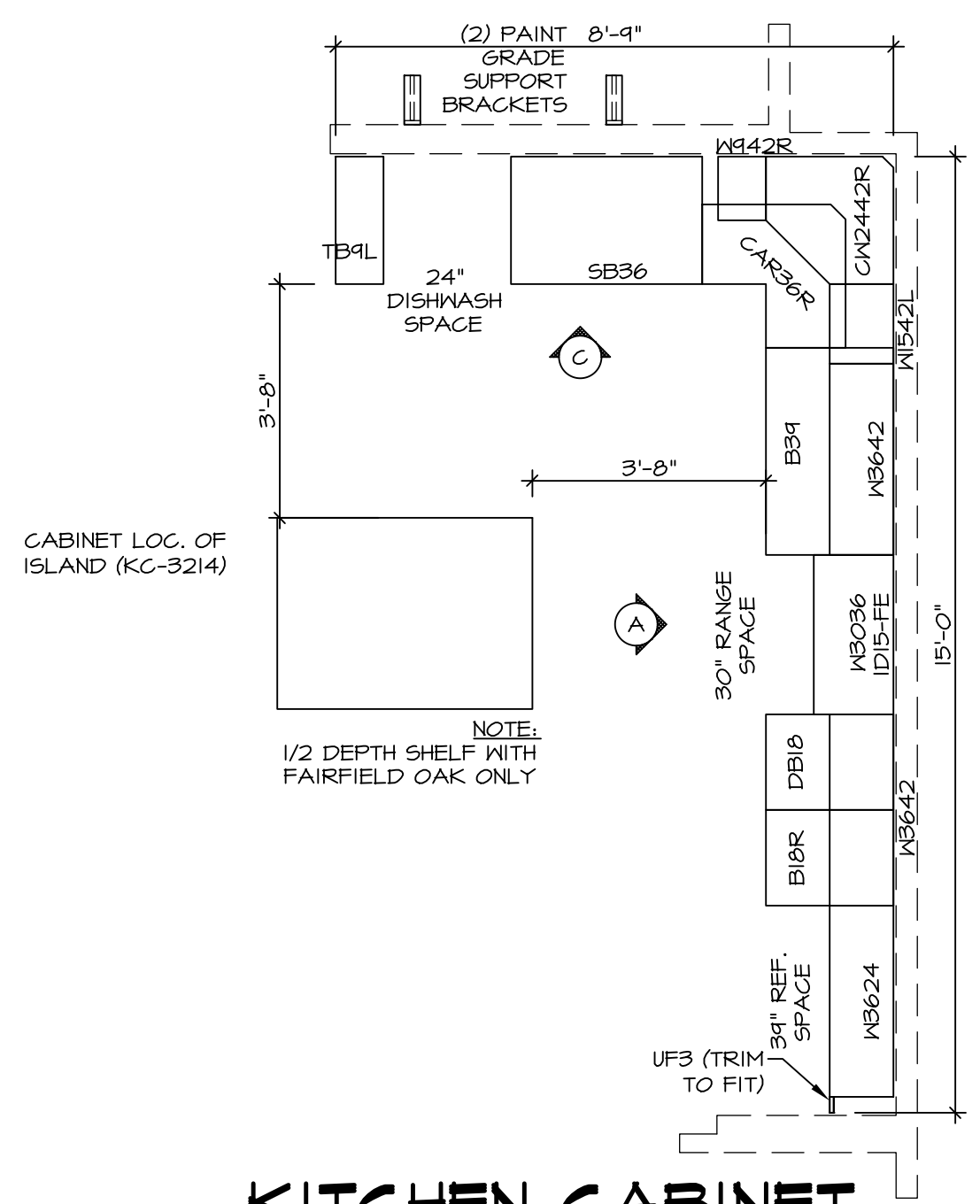
SECOND FLOOR PLAN
SCALE: 1/4" = 1'-0"

REV. NO.	DATE	REMARKS
1	08/04/16	TM - DRAWING ALIGNMENT
2	07/12/17	SLS - T-PLY CONVERSION PROJECT

NVR, Inc., owner, expressly reserves its copyright in these plans. These plans are not to be reproduced, changed, copied, or otherwise used in any way without the written consent of NVR, Inc.

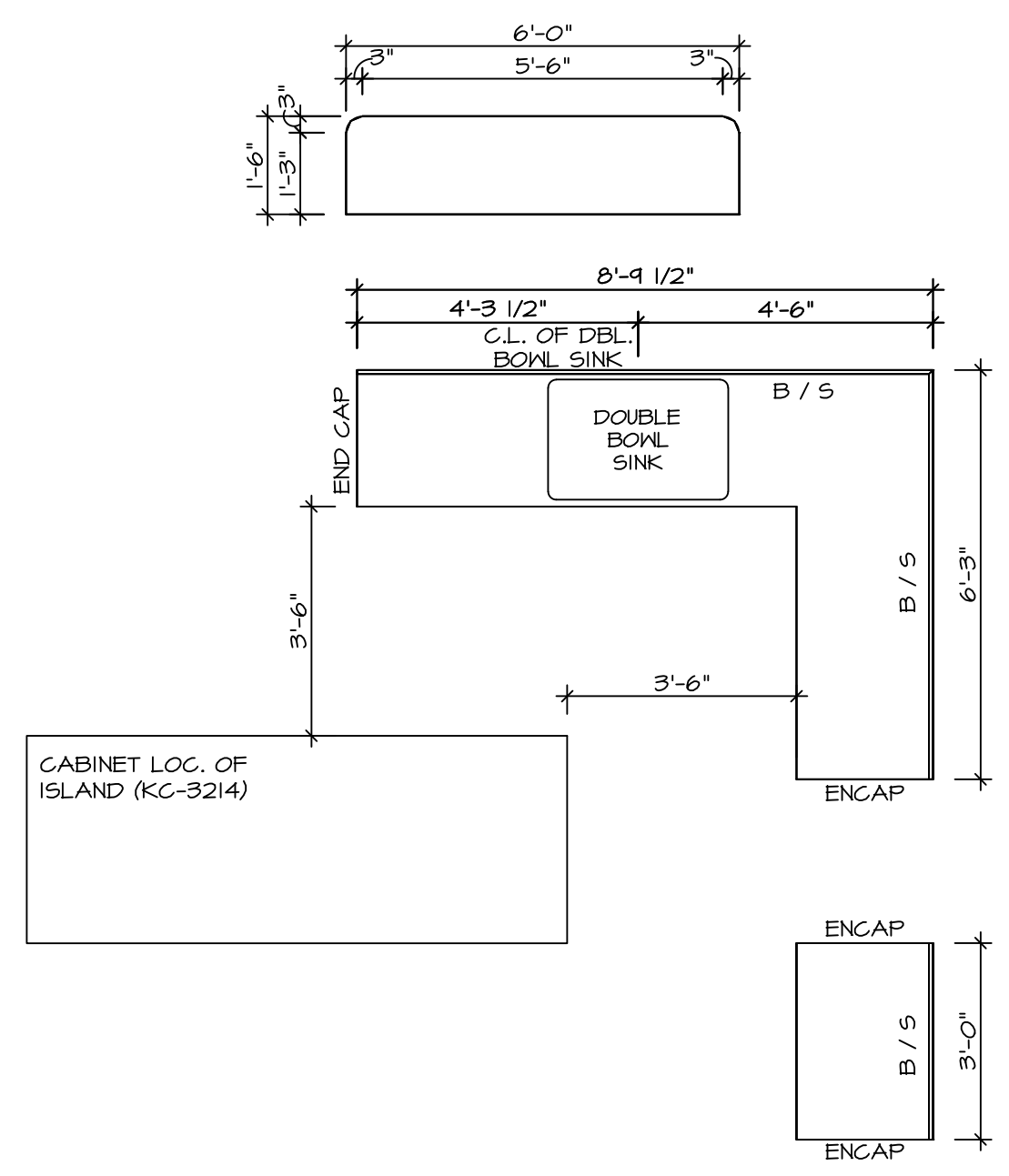


SHEET NO.	A-8	60
MODEL	PALERMO	
VERSION	03	
DRAWN BY		
DATE:		
OPTION		
DESCRIPTION	SECOND FLOOR PLAN	



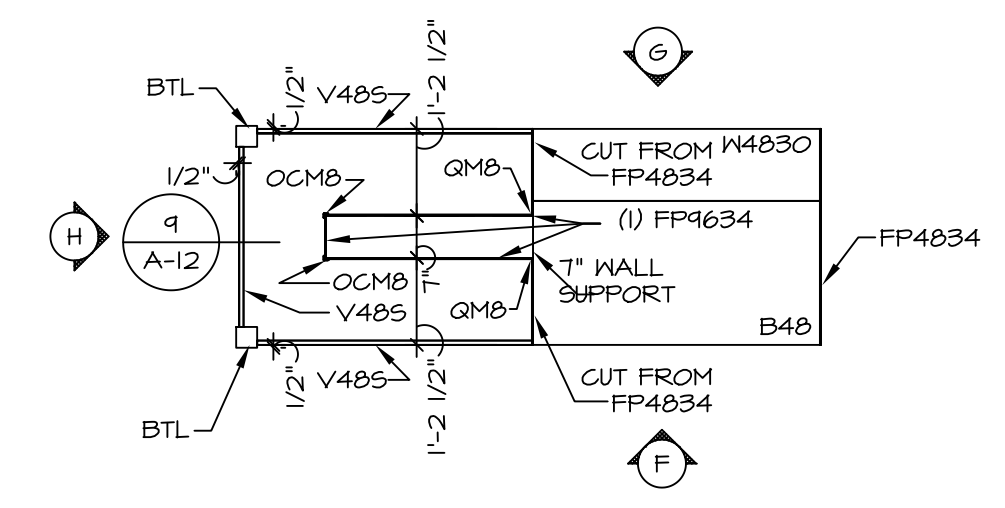
**KITCHEN CABINET
PLAN-KC-2862**

STANDARD KITCHEN MORNING ROOM SCALE: 3/8" = 1'-0" A-12



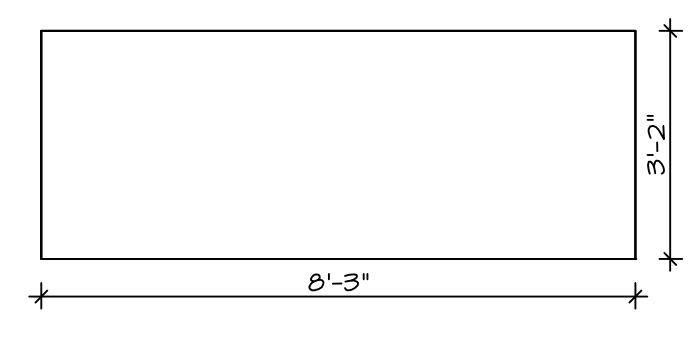
**KITCHEN COUNTERTOP
PLAN-KT-2862**

STANDARD KITCHEN MORNING ROOM SCALE: 3/8" = 1'-0" A-12



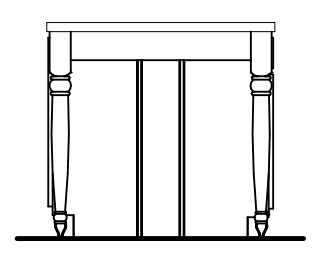
**KITCHEN CABINET
PLAN-KC-3214**

GOURMET ISLAND SCALE: 3/8" = 1'-0" A-12

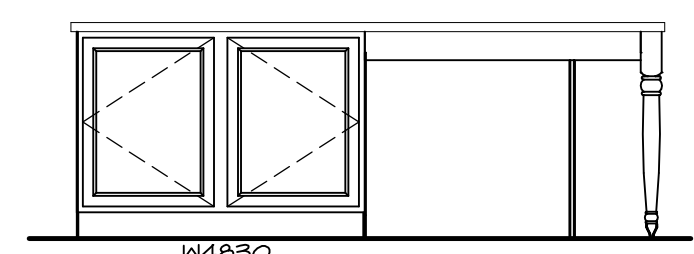


**KITCHEN COUNTERTOP
PLAN-KT-3214**

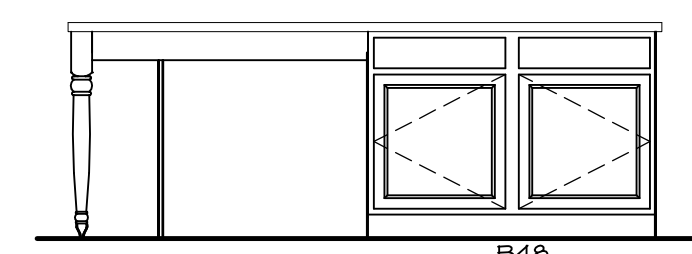
GOURMET ISLAND SCALE: 3/8" = 1'-0" A-12



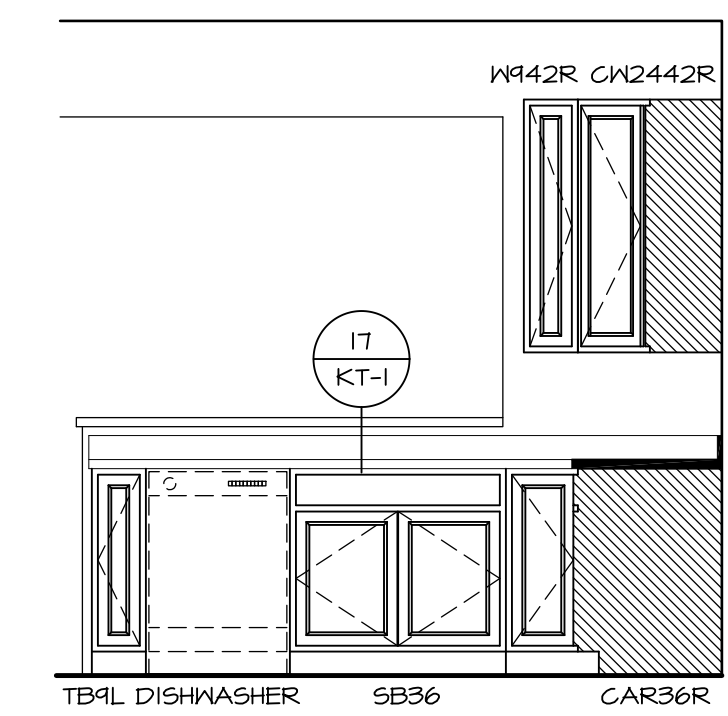
KITCHEN ELEVATION H
SCALE: 3/8" = 1'-0"



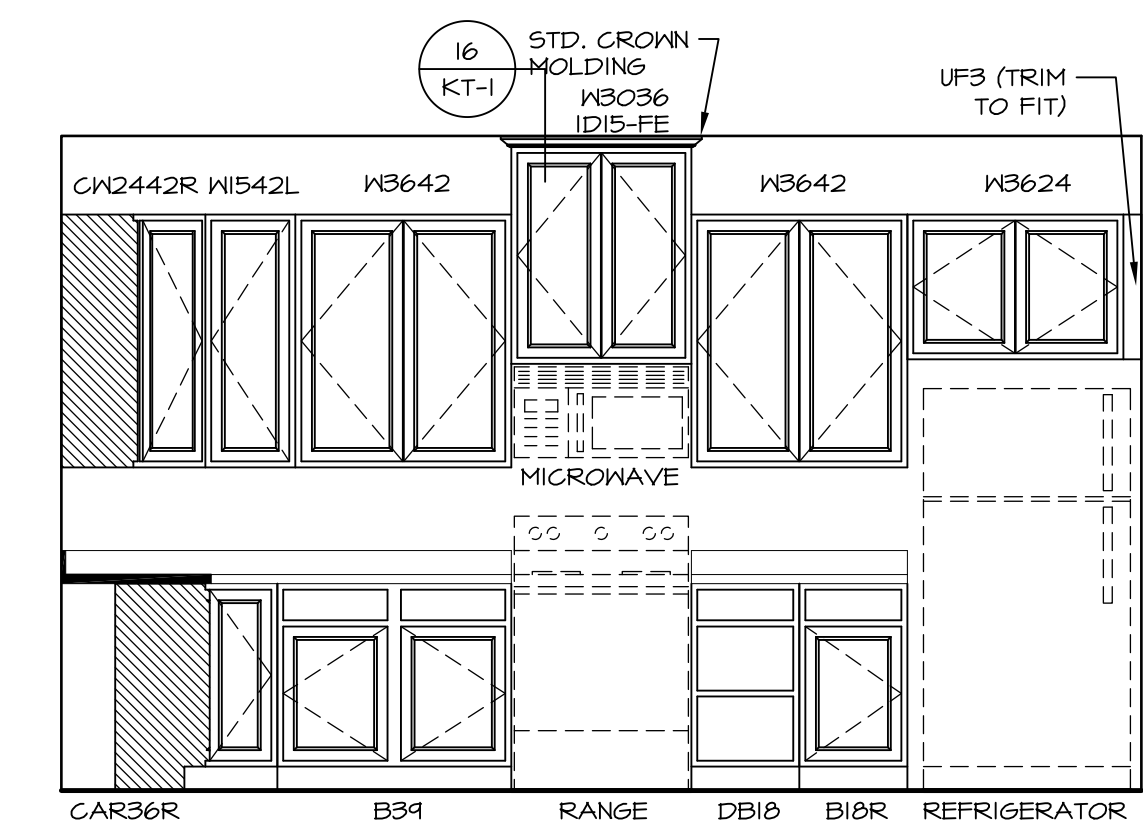
KITCHEN ELEVATION G
SCALE: 3/8" = 1'-0"



KITCHEN ELEVATION F
SCALE: 3/8" = 1'-0"

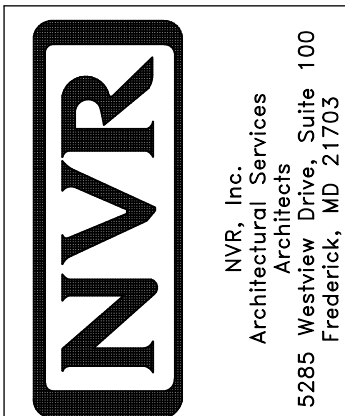


KITCHEN ELEVATION C
SCALE: 3/8" = 1'-0"

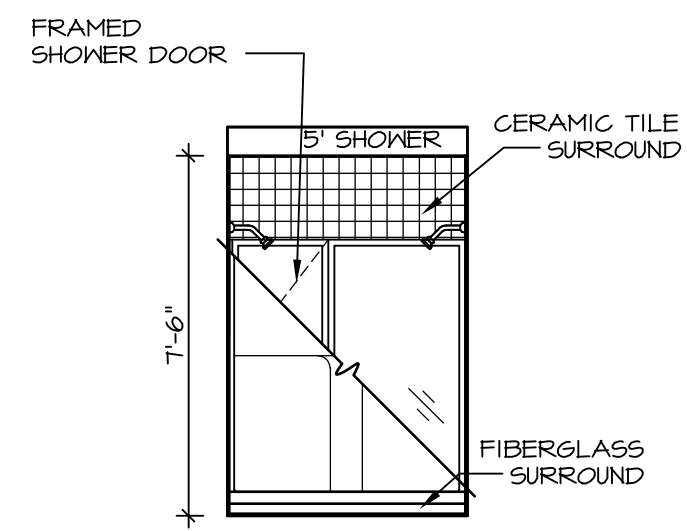


KITCHEN ELEVATION A
SCALE: 3/8" = 1'-0"

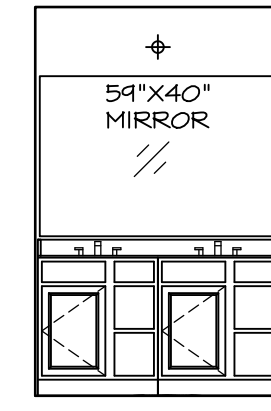
SHEET NO. A-12	MODEL PALERMO	SET NO. PALOO	REMARKS
	DRAWING TITLE	VERSION 03	
70	OPTION DESCRIPTION	DRAWN BY	REV. NO. DATE
		DATE:	



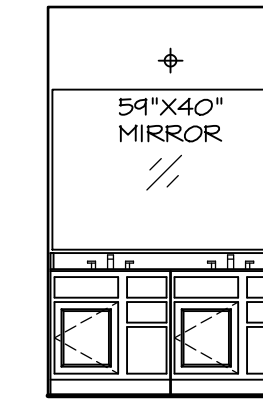
NVR, Inc., owner, expressly reserves its copyright in these plans. These plans are not to be reproduced, changed, copied in any way, or used for any purpose not intended by NVR, Inc. without the written consent of NVR, Inc.



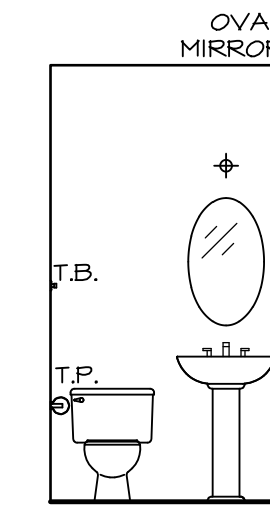
N OWNER'S BATH
SCALE: 1/4" = 1'-0"



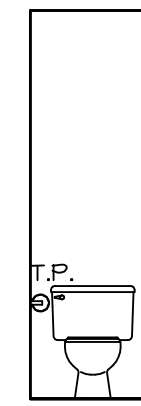
J OWNER'S BATH
SCALE: 1/4" = 1'-0"



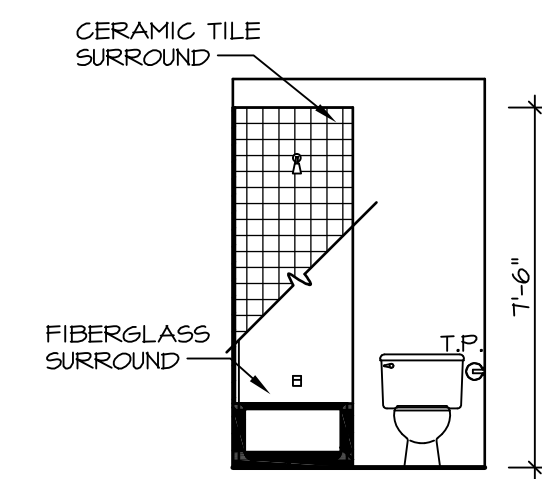
E BATH #1
SCALE: 1/4" = 1'-0"



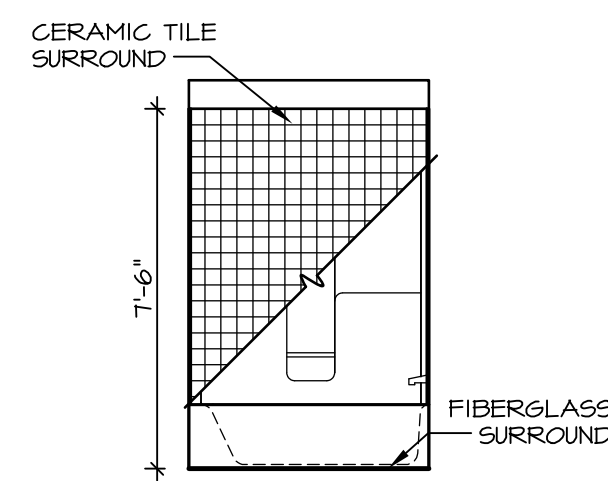
B POWDER ROOM
SCALE: 1/4" = 1'-0"



H OWNER'S BATH
SCALE: 1/4" = 1'-0"



G BATH #1
SCALE: 1/4" = 1'-0"



F BATH #1
SCALE: 1/4" = 1'-0"

NOTES:

1. TEMPERED GLASS SHOWER ENCLOSURE WITH SWING DOOR OR OPTIONAL SLIDING DOOR BY DIVISION
2. TUB ACCESS PANELS PROVIDED AS NEEDED, ALL MATERIALS BY DIVISION
3. REFER TO SHEET IT-2 FOR TUB AND SHOWER DETAILS.
4. ALL V5DB24-42 DRAWERS TO BE SET ON RIGHT HAND.
5. BATH ELEVATIONS ARE SHOWN PER PLAN.

SHEET NO.	A-13
MODEL	PALERMO
DRAWING TITLE	BATH ELEVATIONS
OPTION DESCRIPTION	
72	

NVR
Architectural Services
Architects
5285 Westover Lane, Suite 100
Frederick, MD 21703

SET NO.	PALOO
VERSION	03
DRAWN BY	
DATE:	
OPTION	

REV. NO.	DATE	REMARKS
1	08/04/16	TM - DRAWING ALIGNMENT

--