

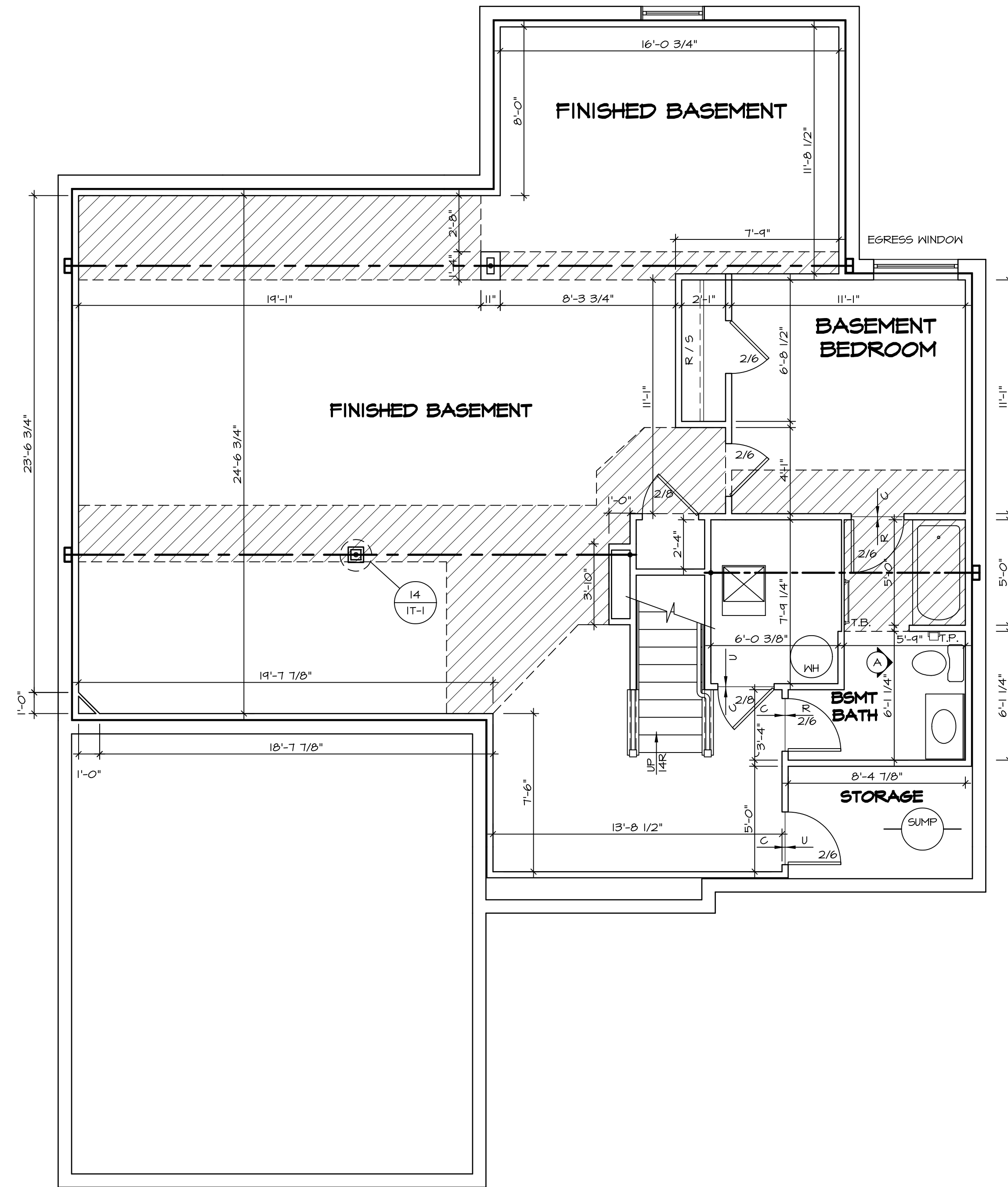
1  
A-5 **PLUMBING PLAN**  
SCALE: 1/4" = 1'-0"

SHEET NO. <b>A-5</b>	MODEL <b>DUNKIRK</b>	SET NO. <b>DUNCO</b>
OPTION DESCRIPTION <b>26</b>	DRAWING TITLE <b>PLUMBING PLAN</b>	VERSION OR <b>01</b>
	DATE:	DRAWN BY:
	OPTION:	

**NVR**  
NVR, Inc.  
Architectural Services  
5285 Westover Hills, Suite 100  
Frederick, MD 21703

NVR, Inc., owner, expressly reserves its copyright in these plans. These plans are not to be reproduced, changed, adapted, or otherwise used in any way without the prior written consent of NVR, Inc.

REV. NO.	DATE	REMARKS



**1**  
A-6 **BASEMENT FLOOR PLAN**  
SCALE: 1/4" = 1'-0"

**FLOOR PLAN NOTES**

- ALL HEADERS ARE (2) 2x6 w/ 2x4 WALLS OR (3) 2x6 w/ 2x6 WALLS, UNLESS OTHERWISE NOTED.
- ALL HEADERS TO HAVE (1) 2x4 OR 2x6 JACK EACH END, UNLESS OTHERWISE NOTED.
- ALL EXTERIOR WALLS TO BE 4" AND ALL INTERIOR WALLS TO BE 3 1/2", UNLESS OTHERWISE NOTED.
- HATCHED AREAS INDICATE DROPPED CEILINGS. ALL DROPPED CEILINGS ARE 12" UNLESS OTHERWISE NOTED.
- SEE "BRACED WALL PANEL DETAIL SHEET" FOR SPECIAL WALL FRAMING LOCATIONS AND HEADER SIZES, IF APPLICABLE.
- SEE STANDARD DETAIL CATEGORY "IT" SHEET(S) FOR INTERIOR TRIM DETAILS.
- SEE ARCHITECTURAL DETAIL SHEET "AD" FOR HOUSE SPECIFIC INTERIOR TRIM OPTION TABLE.
- ALL WINDOWS HAVE T-0 1/2" HEADER HEIGHT UNLESS OTHERWISE NOTED.

**GYPSUM NOTES**

AT GARAGE:  
GYPSUM BOARD AT COMMON WALLS, CEILINGS, BEAM WRAPS AND SUPPORTS PER STANDARD DETAIL FA-1(b) FIRE ASSEMBLIES OR AS REQUIRED BY LOCAL CODE.

AT STAIRS:  
1/2" GYPSUM BOARD AT UNDERSIDE OF STAIRS AND WALLS IN CLOSET

**LEGEND**

	BEARING WALL
	NON BEARING WALL
	INDICATES BEARING FROM POINT-LOAD ABOVE
	JACKS
	BEAM/HEADER
	PAD FOOTING
	STEEL COLUMN
	PORTAL FRAME
	JOIST/TRUSS
	LVL
	ENGINEERING PAGE NUMBER

SEE FC DETAILS FOR FRAMING CONNECTORS

SHEET NO.	A-6	OPTION DESCRIPTION	27
MODEL	DUNKIRK	OPTION	
SET NO.	DUNDO	OPTION	
VERSION	01	OPTION	
DRAWN BY		OPTION	
DATE:		OPTION	
DRAWING TITLE	BASEMENT FLOOR PLAN		

**NVR**  
Architectural Services  
5285 Washburn Circle  
Frederick, MD 21703

NVR, Inc., owner, expressly reserves its copyright in these plans. These plans are not to be reproduced, changed, copied in any way, or otherwise used, without the prior written consent of NVR, Inc.

REV. NO.	DATE	REMARKS

FIRST FLOOR JACK SCHEDULE				
IDENTIFIER	DESCRIPTION	OPTIONS	ENG. NUM.	REMARKS
J101	JACK - (6) 2X4 SP#1	EVA	1050	
J102	JACK - (3) 2X4 SFF STUD GRADE	EVA, ELB	1046	CRIPPLES
J104	JACK - (3) 2X4 SFF STUD GRADE	GCB, EVA, ELB	1046	
J105	JACK - (3) 2X6 SFF STUD GRADE	ELB	2008	
J109	JACK - (2) 2X4 SFF STUD GRADE	GCB	1127	
J110	JACK - (2) 2X4 SFF STUD GRADE	GCB	1127	
J128	JACK - (2) 2X4 SFF STUD GRADE	EDQ, MNS	1114	
J129	JACK - (2) 2X4 SFF STUD GRADE	EDQ, MNS	1114	
J133	JACK - (3) 2X6 SFF STUD GRADE	MAA	1062	
J134	JACK - (2) 2X4 SFF STUD GRADE	MAA, EDQ	1076	
J136	JACK - (3) 2X6 SFF STUD GRADE	MAA	1068	
J138	JACK - (2) 2X4 SFF STUD GRADE		1072	
J139	JACK - (2) 2X4 SFF STUD GRADE		1072	
J140	JACK - (2) 2X4 SFF STUD GRADE		1056	
J141	JACK - (2) 2X4 SFF STUD GRADE		1056	
J142	JACK - (3) 2X4 SFF STUD GRADE		1034, 1034	
J146	JACK - (2) 2X4 SFF STUD GRADE		1102	
J147	JACK - (2) 2X4 SFF STUD GRADE		1102	

STEEL COLUMN SCHEDULE					
IDENTIFIER	STYLE	HEIGHT	OPTIONS	ENG. NUM.	REMARKS
C103	STANCHION - 3 IN SCHED 40	8'-0" 3/8"	GCB, EVA	1050	

**LVL PLY TO PLY FASTENING SCHEDULE:** (WHERE APPLICABLE BASED ON LVL USAGE)

1.A - (2) FLY UP TO AND INCLUDING 11 7/8" TALL; FASTEN FLIES W/ (2) ROWS 16D NAILS AT 12" O.C.  
 2.A - (2) FLY 14" TO AND 18" TALL (INCLUSIVE); FASTEN FLIES W/ (3) ROWS 16D NAILS AT 12" O.C.  
 3.A - (2) FLY 20" TALL AND OVER; FASTEN FLIES W/ (4) ROWS 16D NAILS AT 12" O.C.  
 4.A - (3) FLY UP TO AND INCLUDING 11 7/8" TALL; FASTEN FLIES W/ (2) ROWS 16D NAILS AT 12" O.C. FROM EACH SIDE  
 5.A - (3) FLY 14" TO AND 18" TALL (INCLUSIVE); FASTEN FLIES W/ (3) ROWS 16D NAILS AT 12" O.C. FROM EACH SIDE  
 6.A - (3) FLY 20" TALL AND OVER; FASTEN FLIES W/ (4) ROWS 16D NAILS AT 12" O.C. FROM EACH SIDE  
 7.A - (4) FLY (ALL SIZES); FASTEN FLIES W/ (2) ROWS 1/2" DIAMETER A307 BOLTS AT 24" O.C. SEE SHOP DRAWING FOR ADDITIONAL INFORMATION.

FIRST FLOOR BEAM/HEADER SCHEDULE					
IDENTIFIER	DESCRIPTION	LENGTH	OPTIONS	ENG. NUM.	REMARKS
B101	BEAM STEEL - W16X50 HP	20'-3"	EVA, ELB	1053	3/8"x11" PLATE
B102	BEAM STEEL - W12X14	20'-3"	EVA, ELB	1046	
PF101-2	LVL - 14	20'-0"	GCB	1127	2.A, PORTAL FRAME

**FLOOR PLAN NOTES**

- ALL HEADERS ARE (2) 2x6 W/ 2x4 WALLS OR (3) 2x6 W/ 2x6 WALLS, UNLESS OTHERWISE NOTED.
- ALL HEADERS TO HAVE (1) 2x4 OR 2x6 JACK EACH END, UNLESS OTHERWISE NOTED.
- ALL EXTERIOR WALLS TO BE 4" AND ALL INTERIOR WALLS TO BE 3 1/2", UNLESS OTHERWISE NOTED.
- HATCHED AREAS INDICATE DROPPED CEILING. ALL DROPPED CEILING ARE 12" UNLESS OTHERWISE NOTED.
- SEE BRACED WALL PANEL DETAIL SHEET FOR SPECIAL WALL FRAMING LOCATIONS AND HEADER SIZES, IF APPLICABLE.
- SEE STANDARD DETAIL CATEGORY "IT" SHEET(S) FOR INTERIOR TRIM DETAILS.
- SEE ARCHITECTURAL DETAIL SHEET "AD" FOR HOUSE SPECIFIC INTERIOR TRIM OPTION TABLE.
- ALL WINDOWS HAVE 8'-0" 1/2" HEADER HEIGHT UNLESS OTHERWISE NOTED.

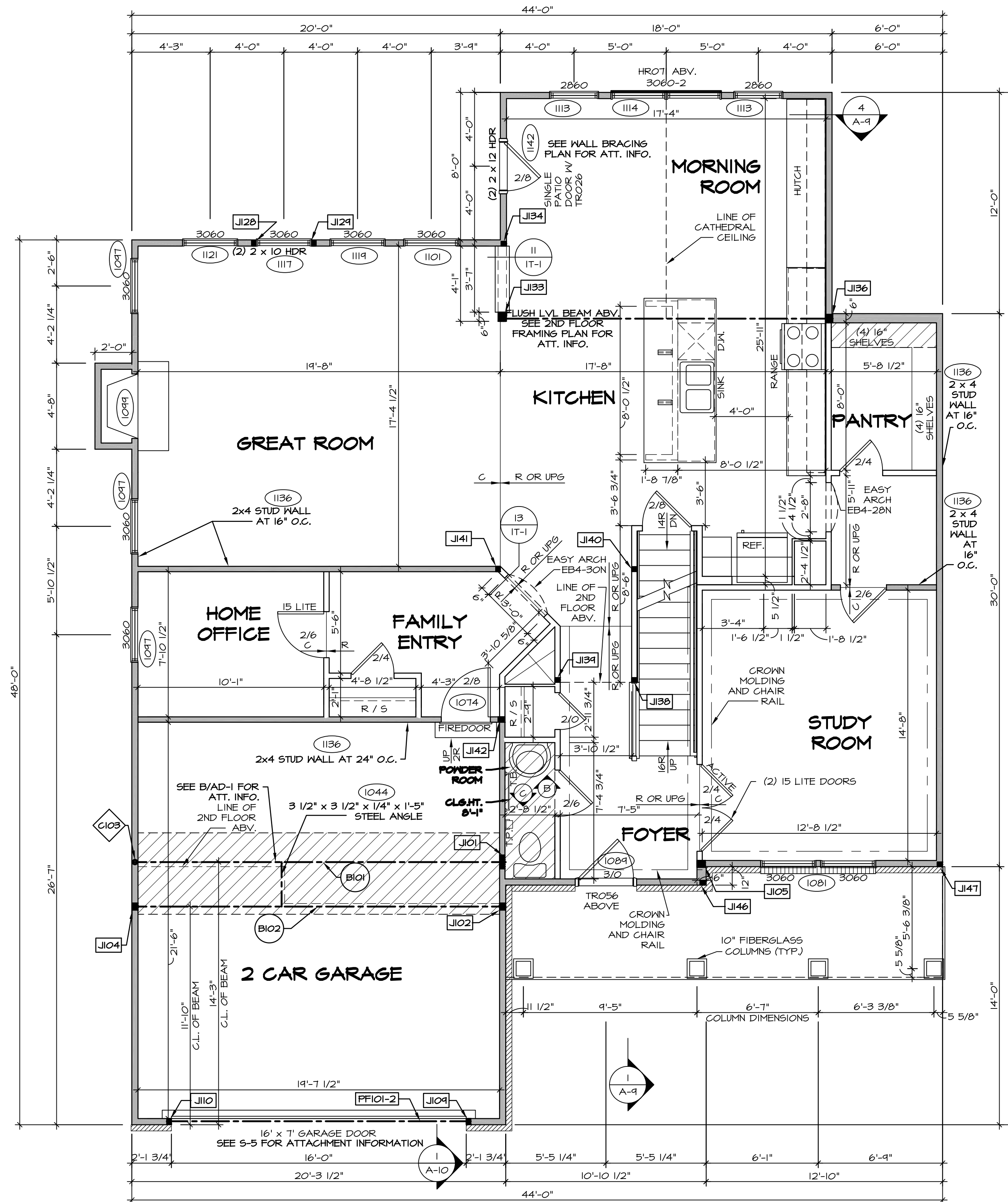
**GYPSUM NOTES**

**AT GARAGE:**  
 GYPSUM BOARD AT COMMON WALLS, CEILING, BEAM WRAPS AND SUPPORTS PER STANDARD DETAIL FA-1(b) FIRE ASSEMBLIES OR AS REQUIRED BY LOCAL CODE.

**AT STAIRS:**  
 1/2" GYPSUM BOARD AT UNDERSIDE OF STAIRS AND WALLS IN CLOSET

**LEGEND**

- BEARING WALL
  - NON BEARING WALL
  - INDICATES BEARING FROM POINT-LOAD ABOVE
  - JACKS
  - BEAM/HEADER
  - PAD FOOTING
  - STEEL COLUMN
  - PORTAL FRAME
  - JOIST/TRUSS
  - LVL
  - ENGINEERING PAGE NUMBER
- SEE FC DETAILS FOR FRAMING CONNECTORS



**FIRST FLOOR PLAN**  
 SCALE: 1/4" = 1'-0"

REVISIONS

REV. NO.	DATE	REMARKS

MODEL: DUNKIRK  
 DRAWING TITLE: FIRST FLOOR PLAN  
 SHEET NO. A-7  
 OPTION DESCRIPTION: 29

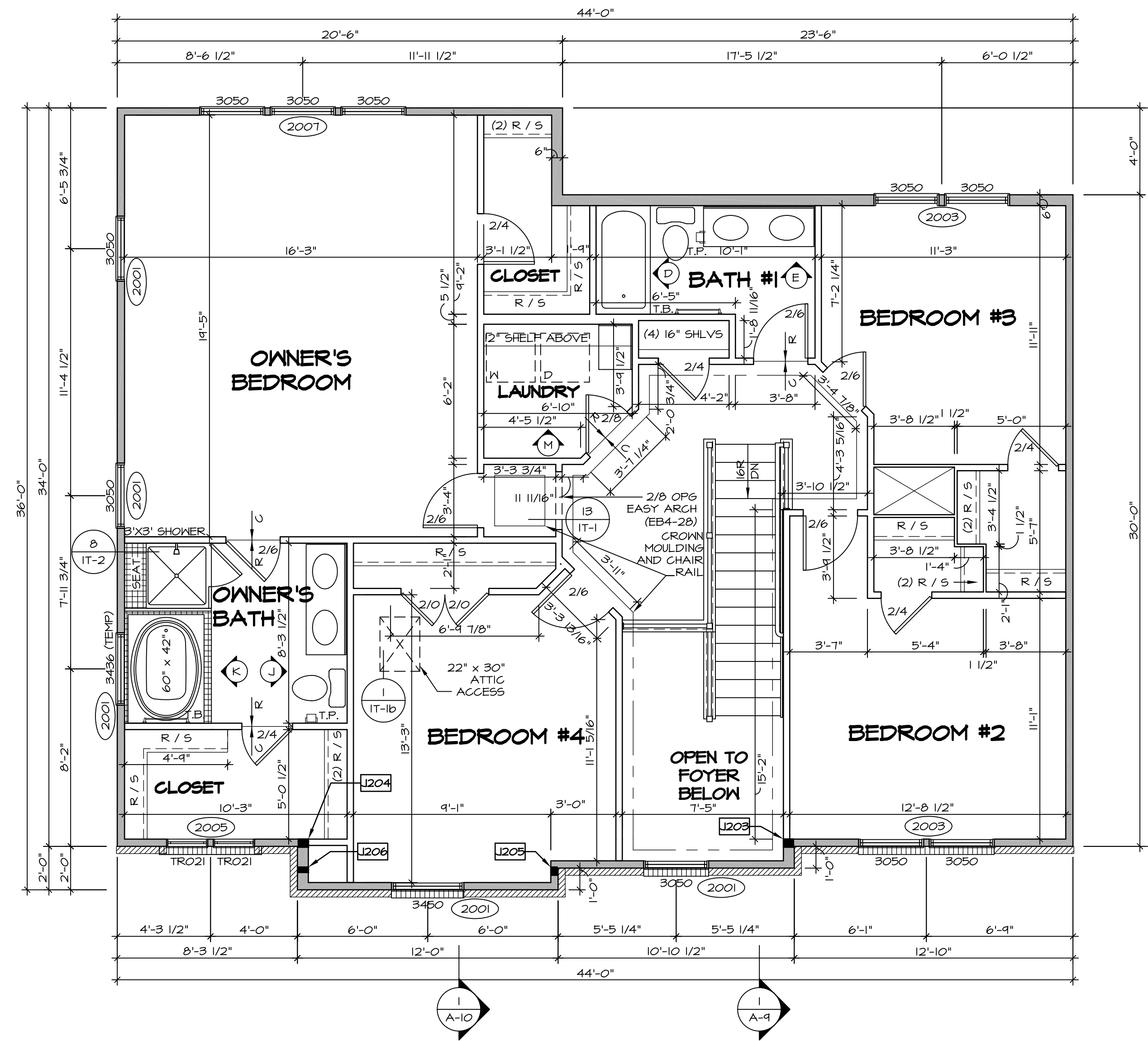
SET NO. DUNCO  
 VERSION 01  
 DRAWN BY:  
 DATE:  
 OPTION

NVR, Inc. Architectural Services  
 5285 West... Suite 100  
 Frederick, MD 21703

NVR, Inc., owner, expressly reserves its copyright in these plans. These plans are not to be reproduced, changed, altered, or otherwise used in any way without the written consent of NVR, Inc.

C:\NVR\Solves\DUNKIRK-DUNCO-09\DC1-16-K443\732355\Sheets\Lot\_Spec\16-A-7-PLN1\_L5.dwg 03/28/19 - 5:45 am

SECOND FLOOR JACK SCHEDULE				
IDENTIFIER	DESCRIPTION	OPTIONS	ENG. NUM.	REMARKS
J203	JACK - (3) 2x6 SFF STUD GRADE	ELB	2008	EXTEND THROUGH TOP PLATE
J204	JACK - (3) 2x6 SFF STUD GRADE	ELB	2008	EXTEND THROUGH TOP PLATE
J205	JACK - (3) 2x4 SFF STUD GRADE	ELB, EVA	2008	
J206	JACK - (2) 2x6 SFF STUD GRADE	ELB, EVA	2008	



I **SECOND FLOOR PLAN**  
 SCALE: 1/4" = 1'-0"

- FLOOR PLAN NOTES**
- ALL HEADERS ARE (2) 2x6 w/ 2x4 WALLS OR (3) 2x6 w/ 2x6 WALLS, UNLESS OTHERWISE NOTED.
  - ALL HEADERS TO HAVE (1) 2x4 OR 2x6 JACK EACH END, UNLESS OTHERWISE NOTED.
  - ALL EXTERIOR WALLS TO BE 4" AND ALL INTERIOR WALLS TO BE 3 1/2", UNLESS OTHERWISE NOTED.
  - HATCHED AREAS INDICATE DROPPED CEILINGS. ALL DROPPED CEILINGS ARE 12" UNLESS OTHERWISE NOTED.
  - SEE "BRACED WALL PANEL DETAIL SHEET" FOR SPECIAL WALL FRAMING LOCATIONS AND HEADER SIZES, IF APPLICABLE.
  - SEE STANDARD DETAIL CATEGORY "11" SHEET(S) FOR INTERIOR TRIM DETAILS.
  - SEE ARCHITECTURAL DETAIL SHEET "AD" FOR HOUSE SPECIFIC INTERIOR TRIM OPTION TABLE.
  - ALL WINDOWS HAVE 7'-0 1/2" HEADER HEIGHT UNLESS OTHERWISE NOTED.

**LEGEND**

	BEARING WALL
	NON BEARING WALL
	INDICATES BEARING FROM POINT-LOAD ABOVE JACKS
	JACKS
	BEAM/HEADER
	PAD FOOTING
	STEEL COLUMN
	PORTAL FRAME
	JOIST/TRUSS
	LVL
	ENGINEERING PAGE NUMBER

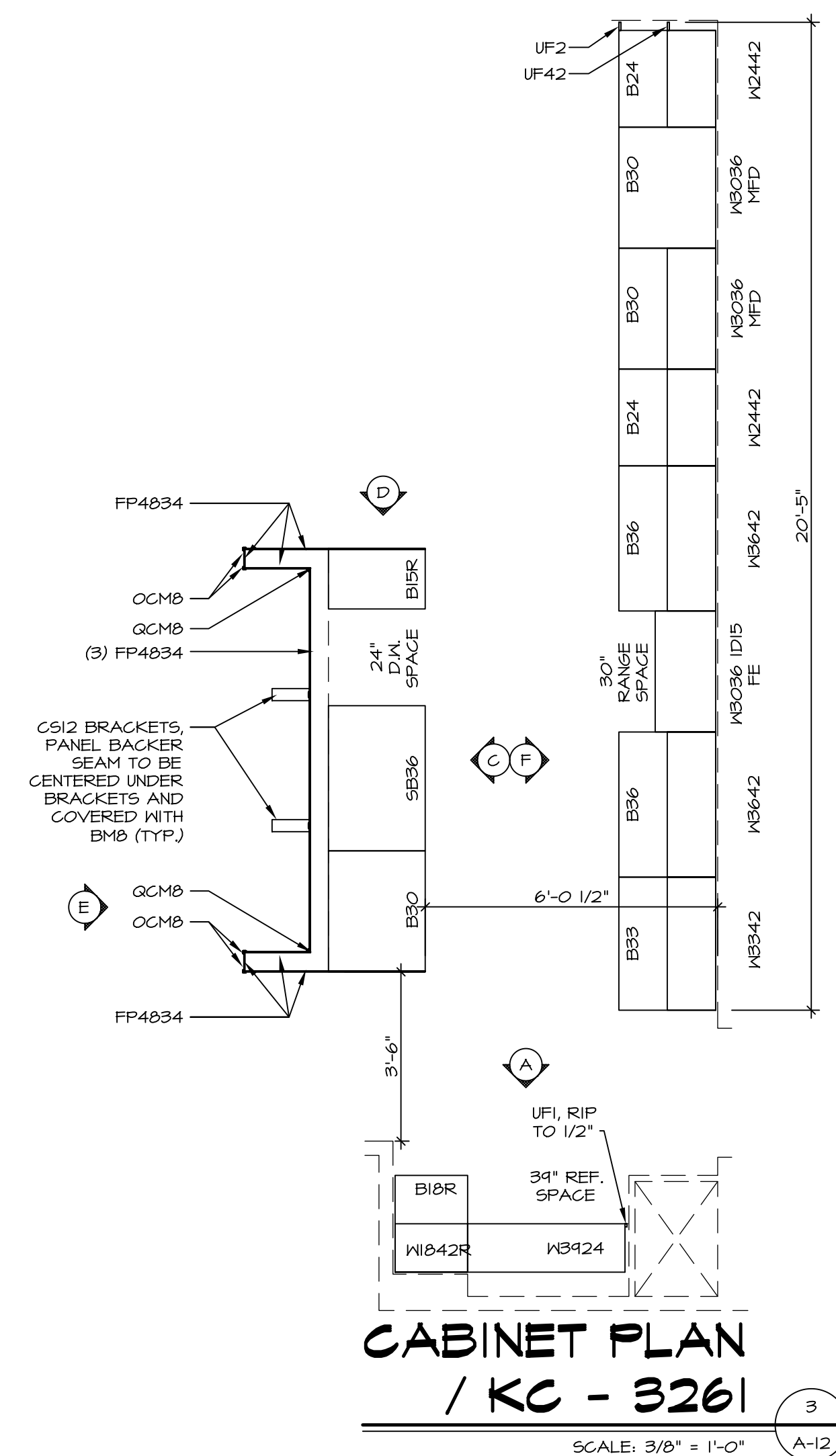
SEE FC DETAILS FOR FRAMING CONNECTORS

SHEET NO.	<b>A-8</b>	34
MODEL	<b>DUNKIRK</b>	
SET NO.	<b>DUNCO</b>	
VERSION	<b>01</b>	
DRAWN BY		
DATE:		
OPTION		
DRAWING TITLE	<b>SECOND FLOOR PLAN</b>	
OPTION DESCRIPTION		

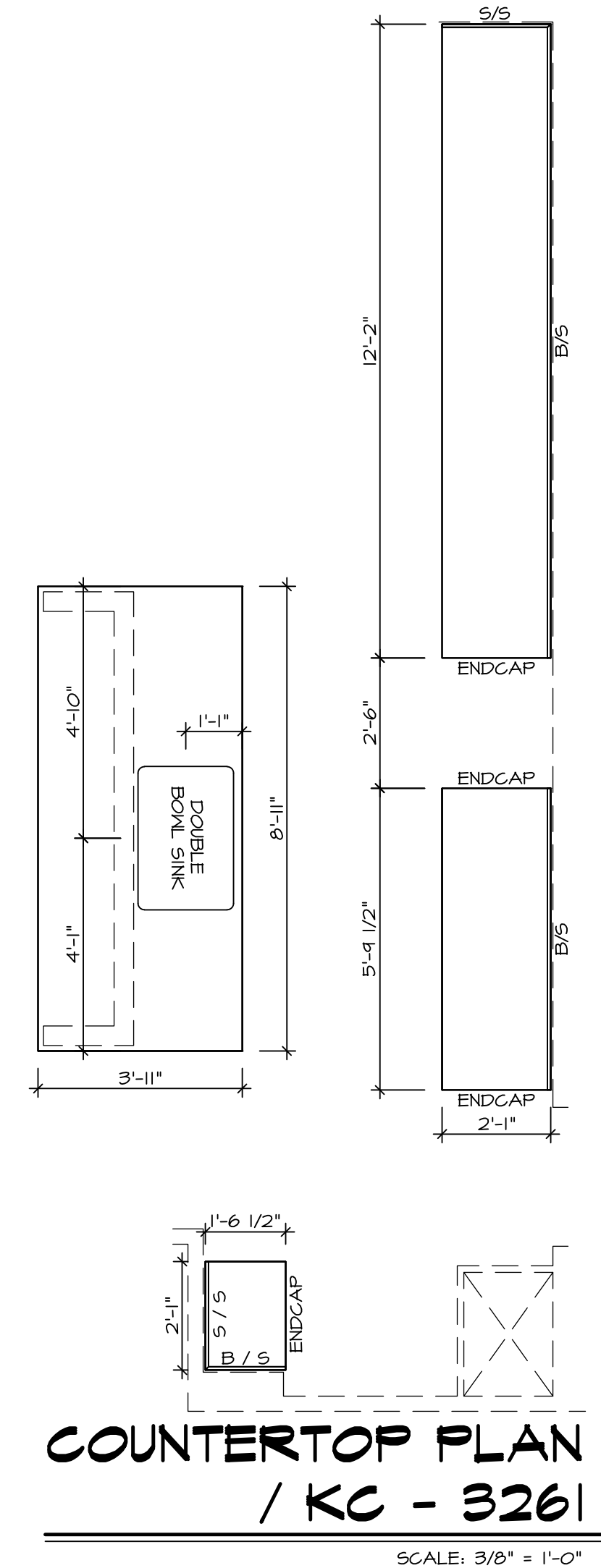
**NVR, Inc.**  
 Architects  
 5285 Westgate Circle  
 Frederick, MD 21703

NVR, Inc., owner, expressly reserves its copyright in these plans. These plans are not to be reproduced, changed, copied, or otherwise used in any way without the written consent of NVR, Inc.

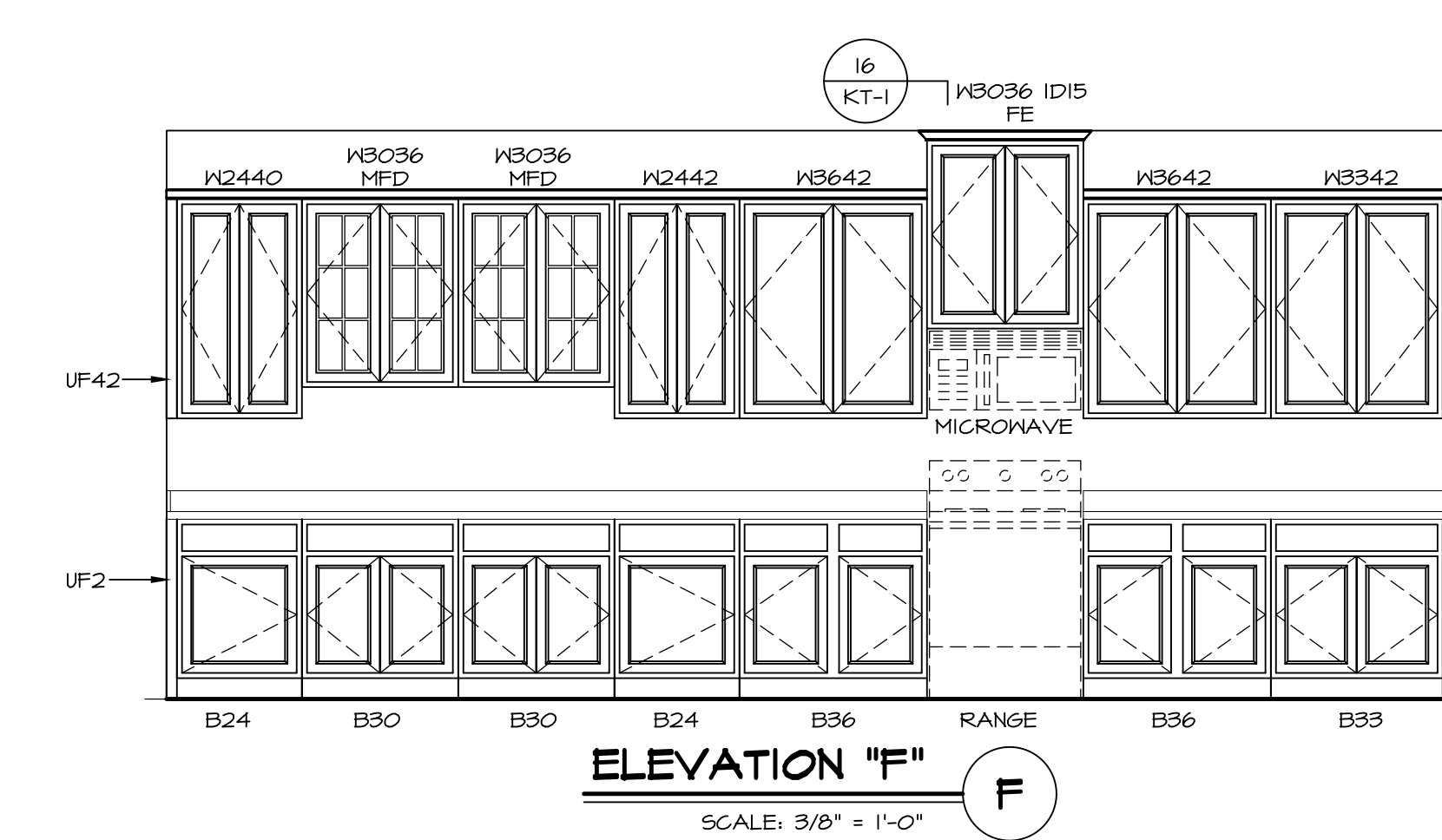
REV. NO.	DATE	REMARKS



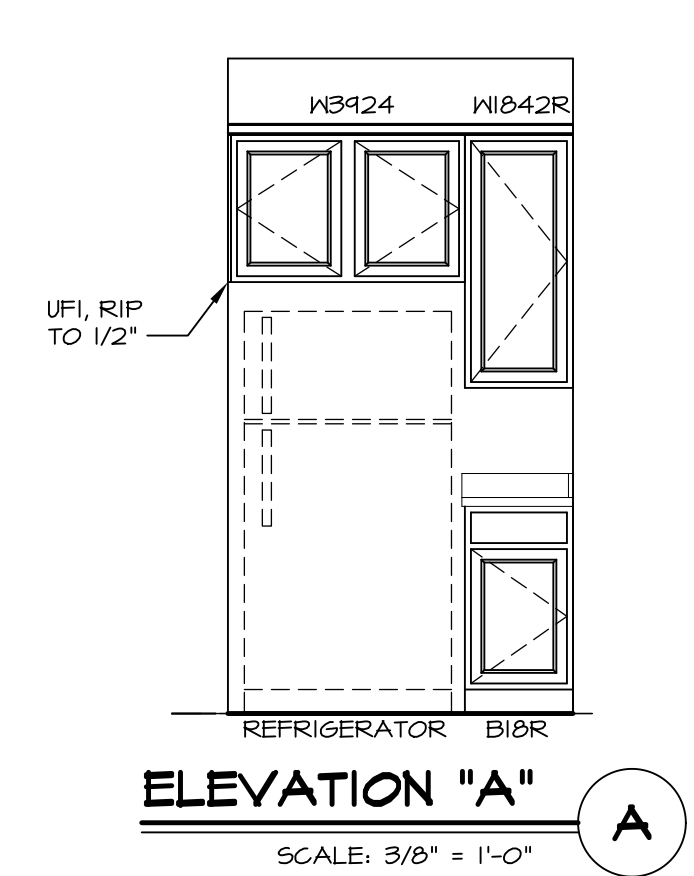
**CABINET PLAN**  
**/ KC - 3261**  
SCALE: 3/8" = 1'-0"  
A-12



**COUNTERTOP PLAN**  
**/ KC - 3261**  
SCALE: 3/8" = 1'-0"  
A-12



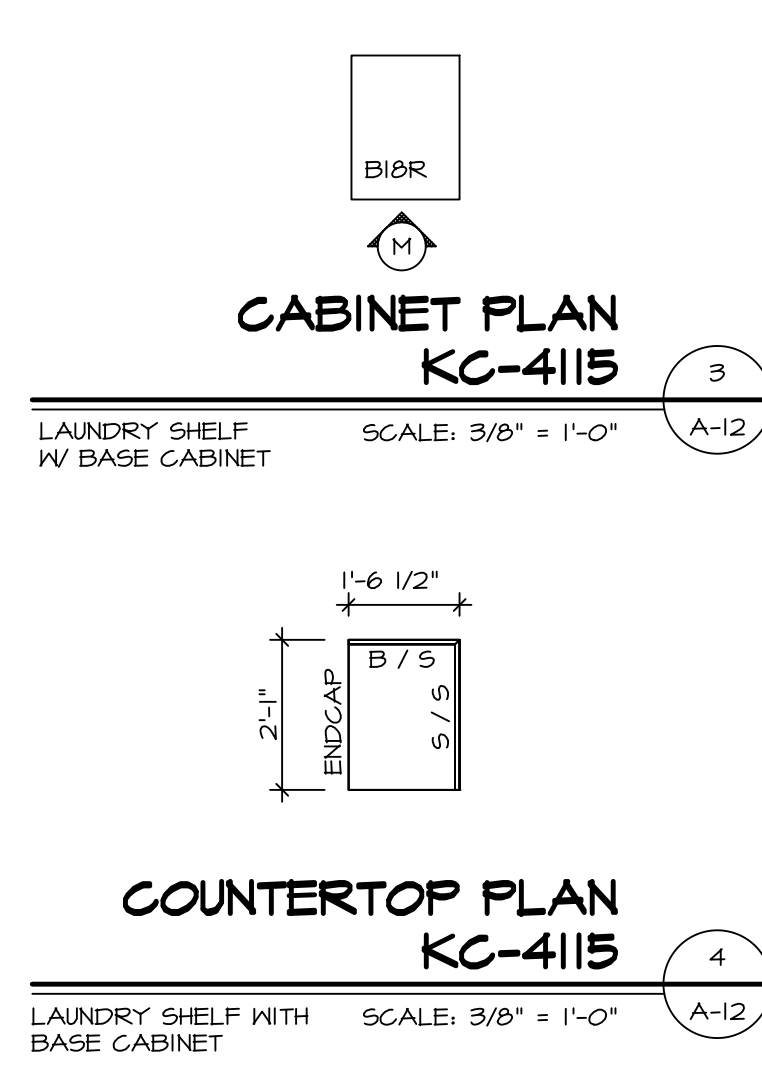
**ELEVATION "F"**  
SCALE: 3/8" = 1'-0"  
A-12



**ELEVATION "A"**  
SCALE: 3/8" = 1'-0"  
A-12

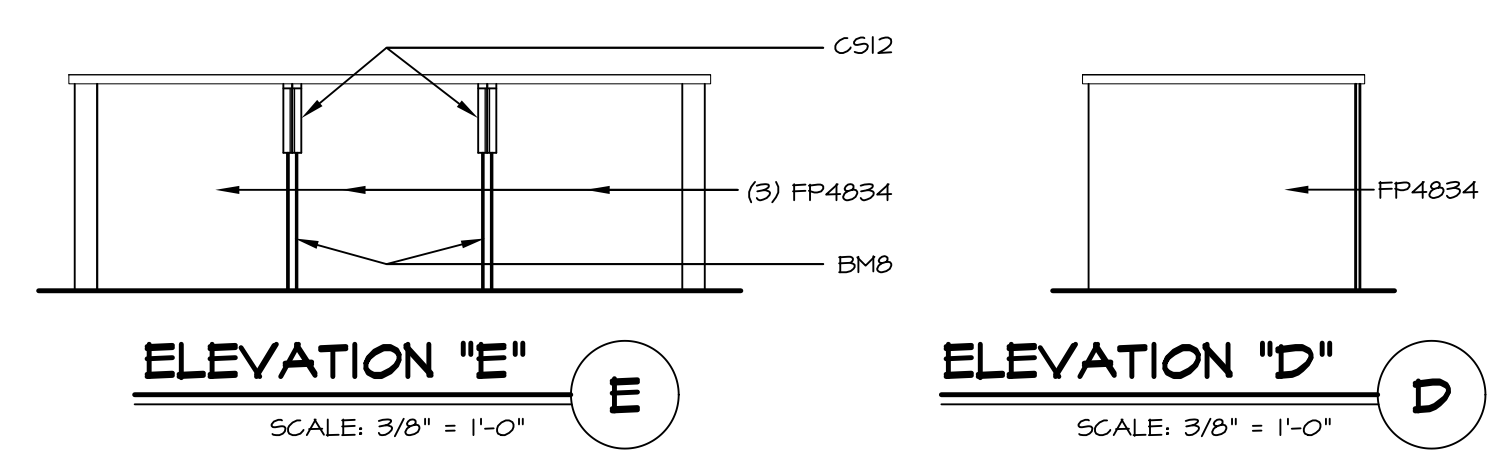


**LAUNDRY ELEVATION**  
SCALE: 3/8" = 1'-0"  
A-12



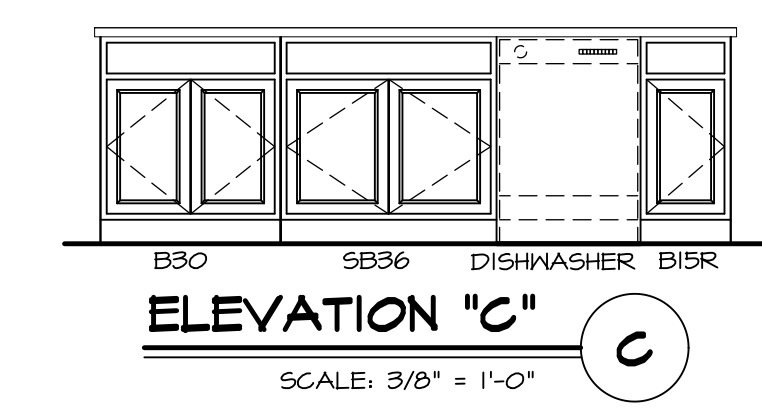
**CABINET PLAN**  
**KC-4115**  
SCALE: 3/8" = 1'-0"  
A-12

**COUNTERTOP PLAN**  
**KC-4115**  
LAUNDRY SHELF WITH BASE CABINET  
SCALE: 3/8" = 1'-0"  
A-12



**ELEVATION "E"**  
SCALE: 3/8" = 1'-0"  
A-12

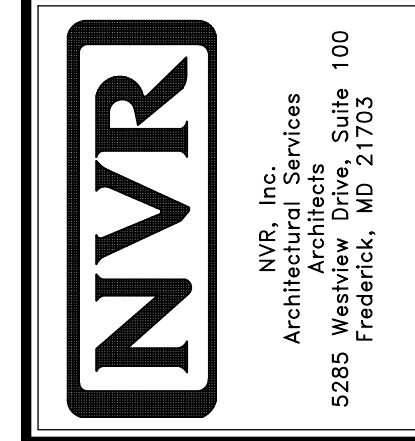
**ELEVATION "D"**  
SCALE: 3/8" = 1'-0"  
A-12

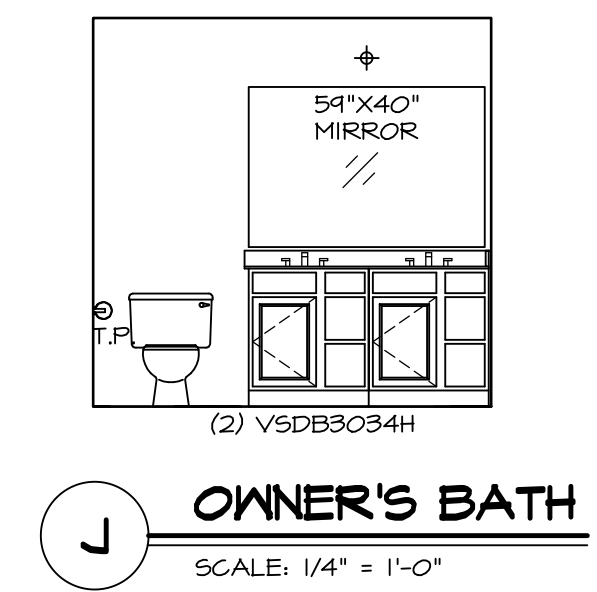
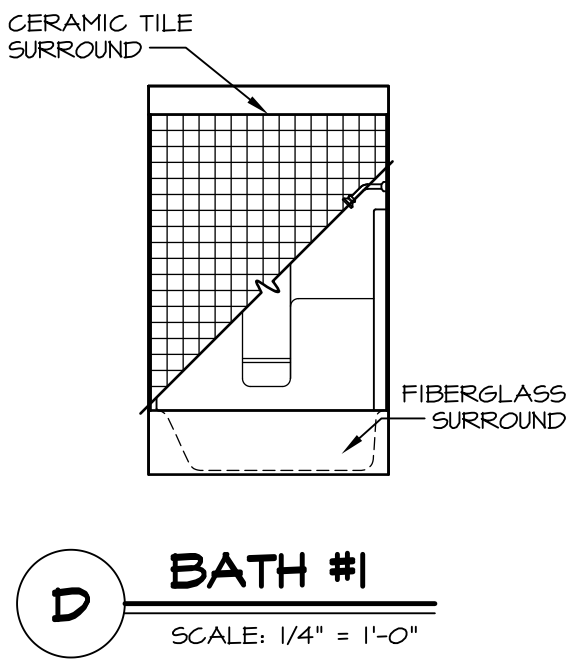
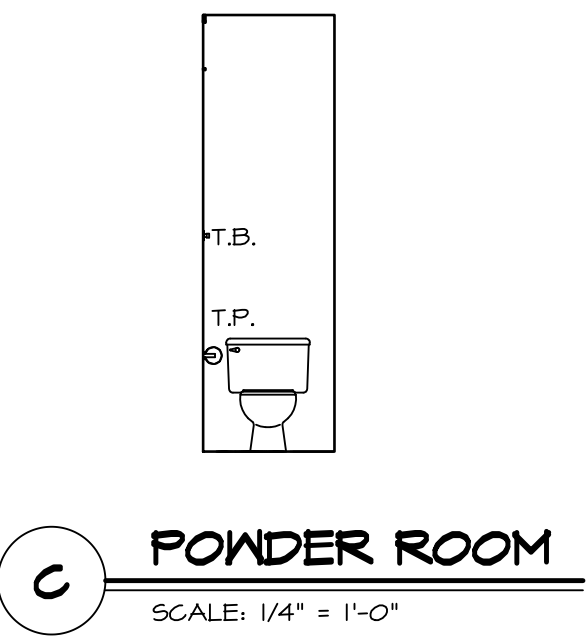
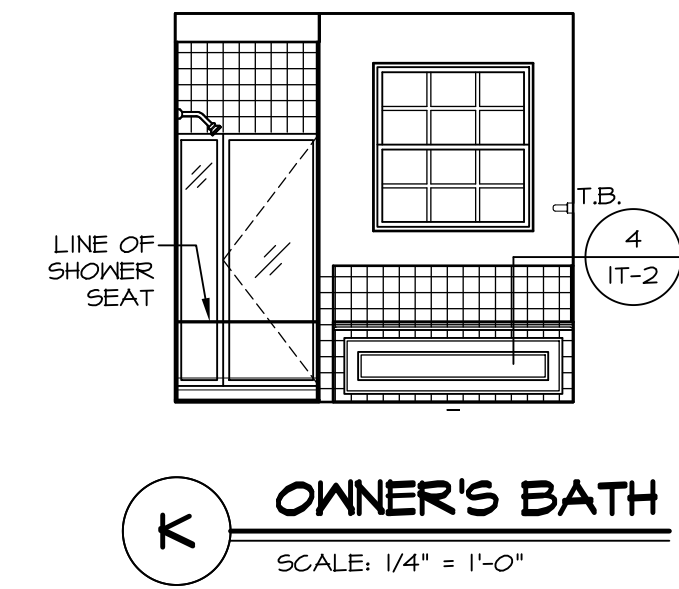
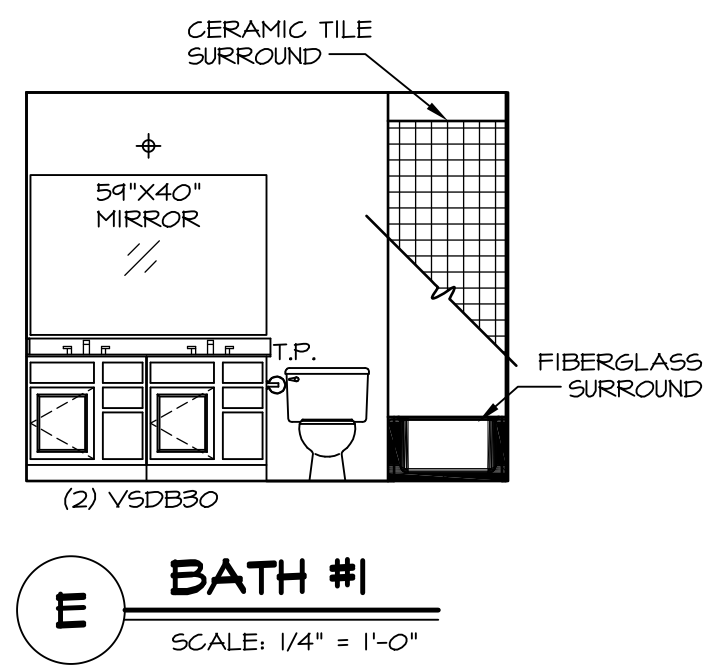
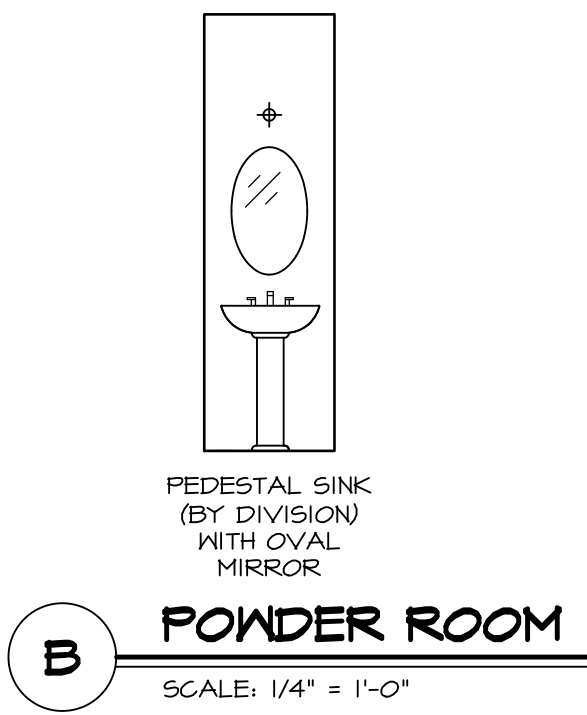


**ELEVATION "C"**  
SCALE: 3/8" = 1'-0"  
A-12

SHEET NO. <b>A-12</b>	MODEL <b>DUNKIRK</b>	SET NO. DUNCO VERSION 01	REMARKS
	DRAWING TITLE	DRAWN BY	
40	OPTION DESCRIPTION	DATE:	REV. NO. DATE
		OPTION	

NVR, Inc., owner, expressly reserves its copyright in these plans. These plans are not to be reproduced, changed, copied, or used in any way without the written consent of NVR, Inc.





**NOTES:**

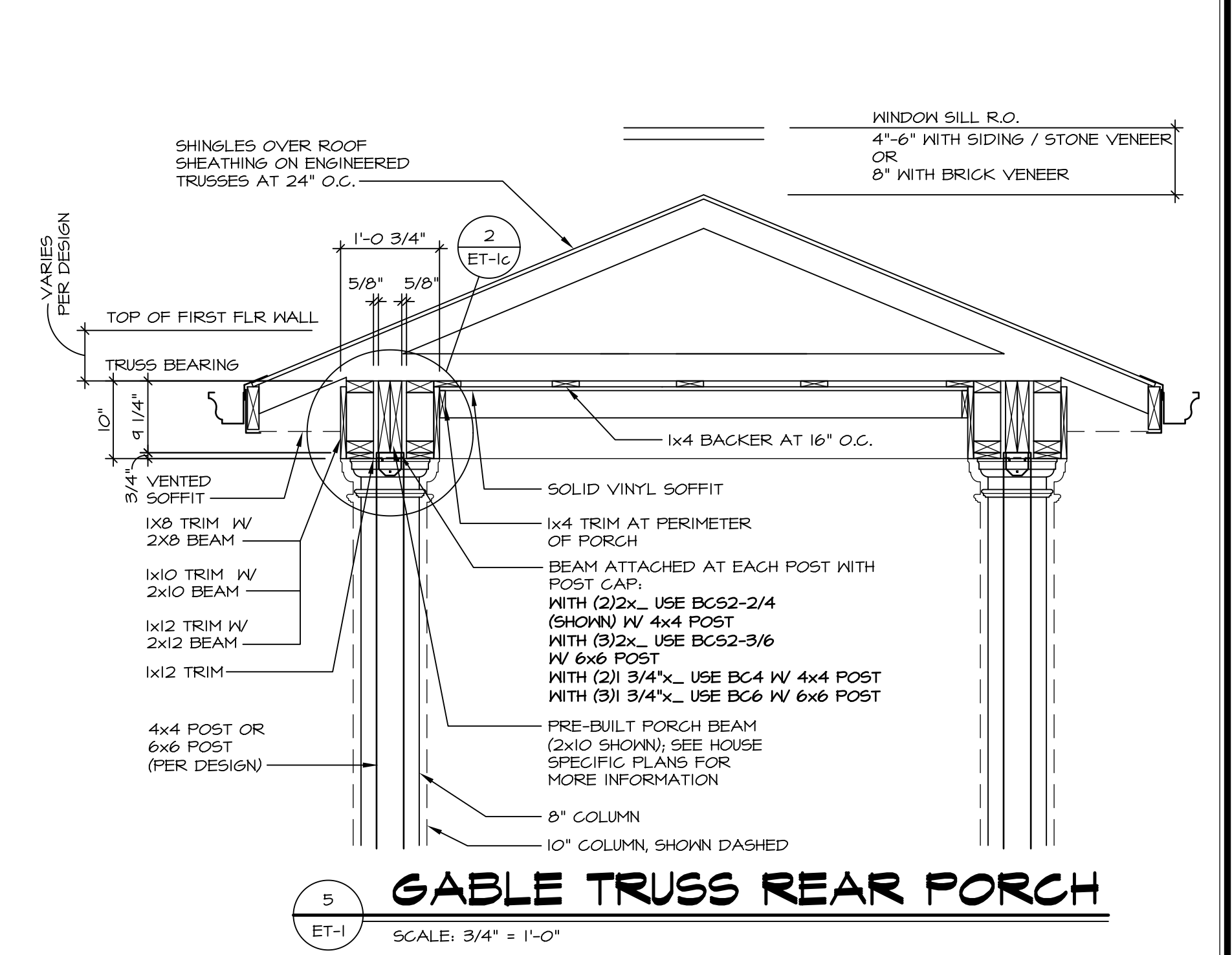
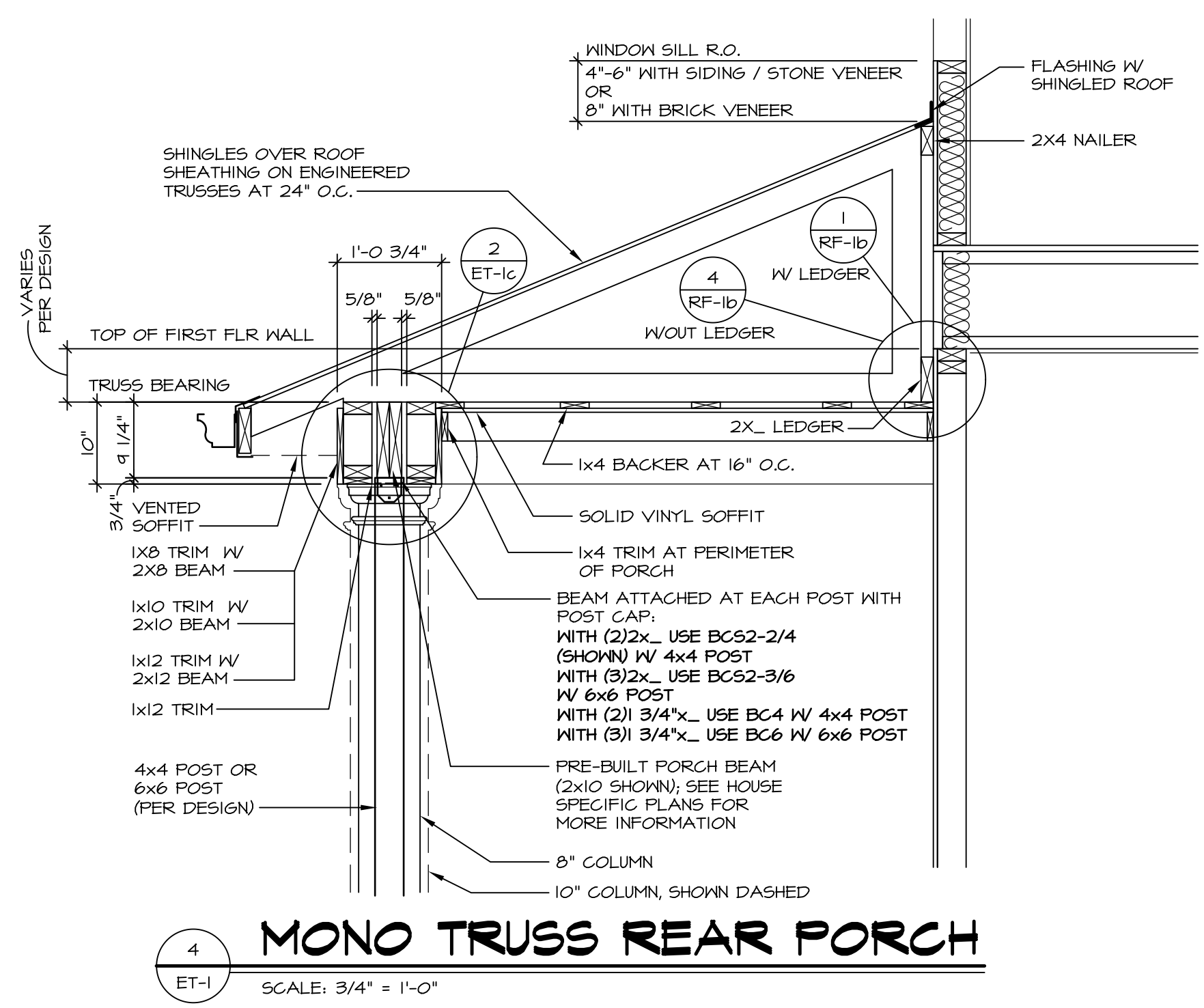
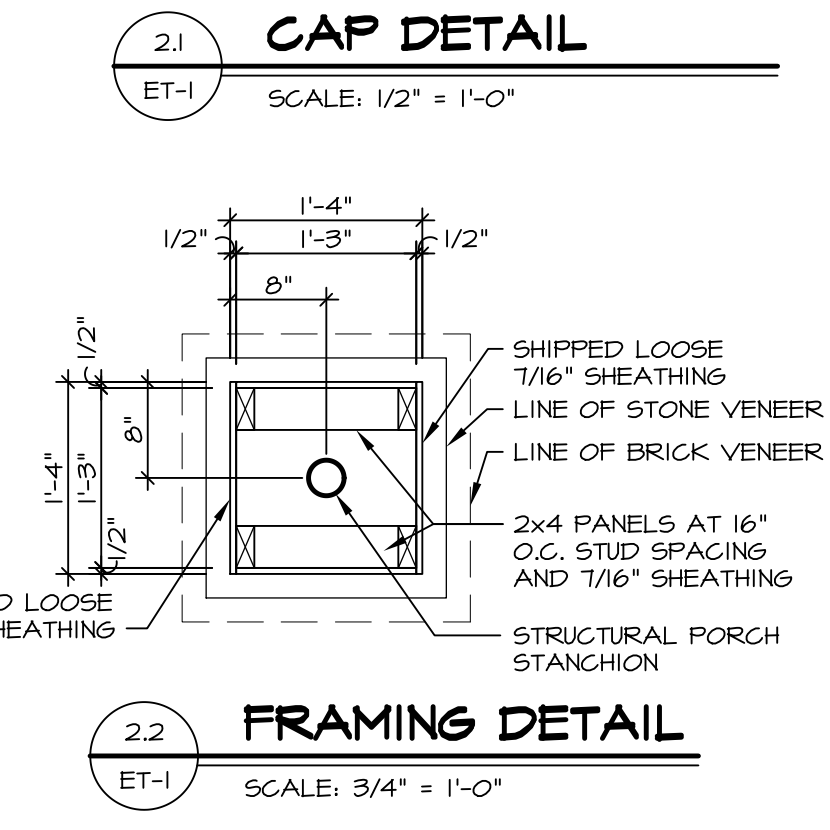
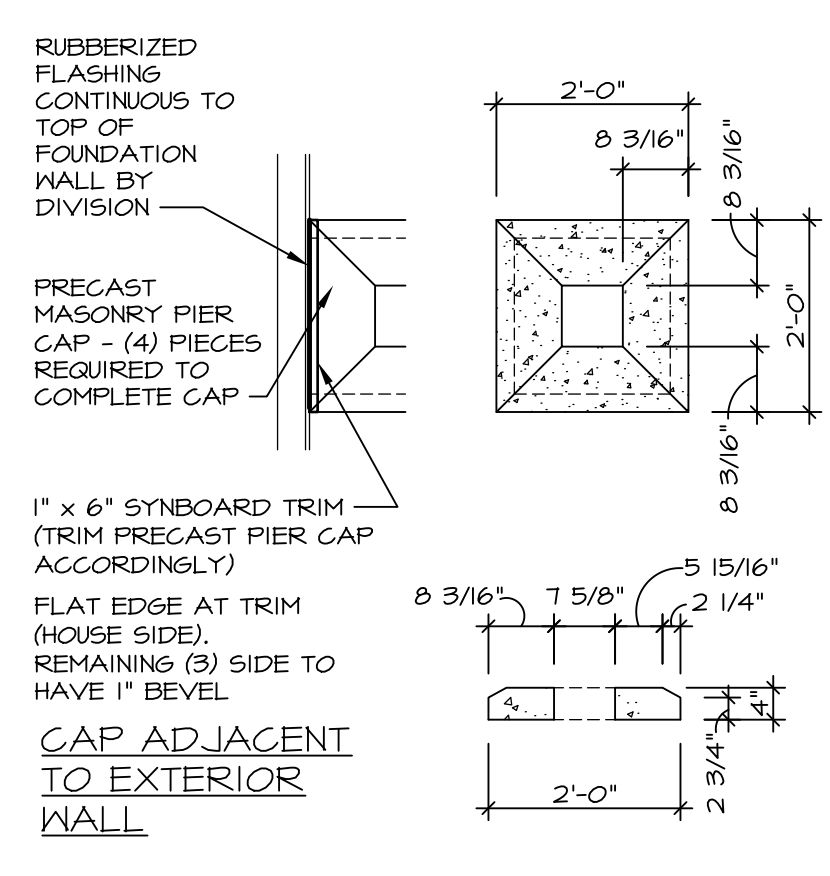
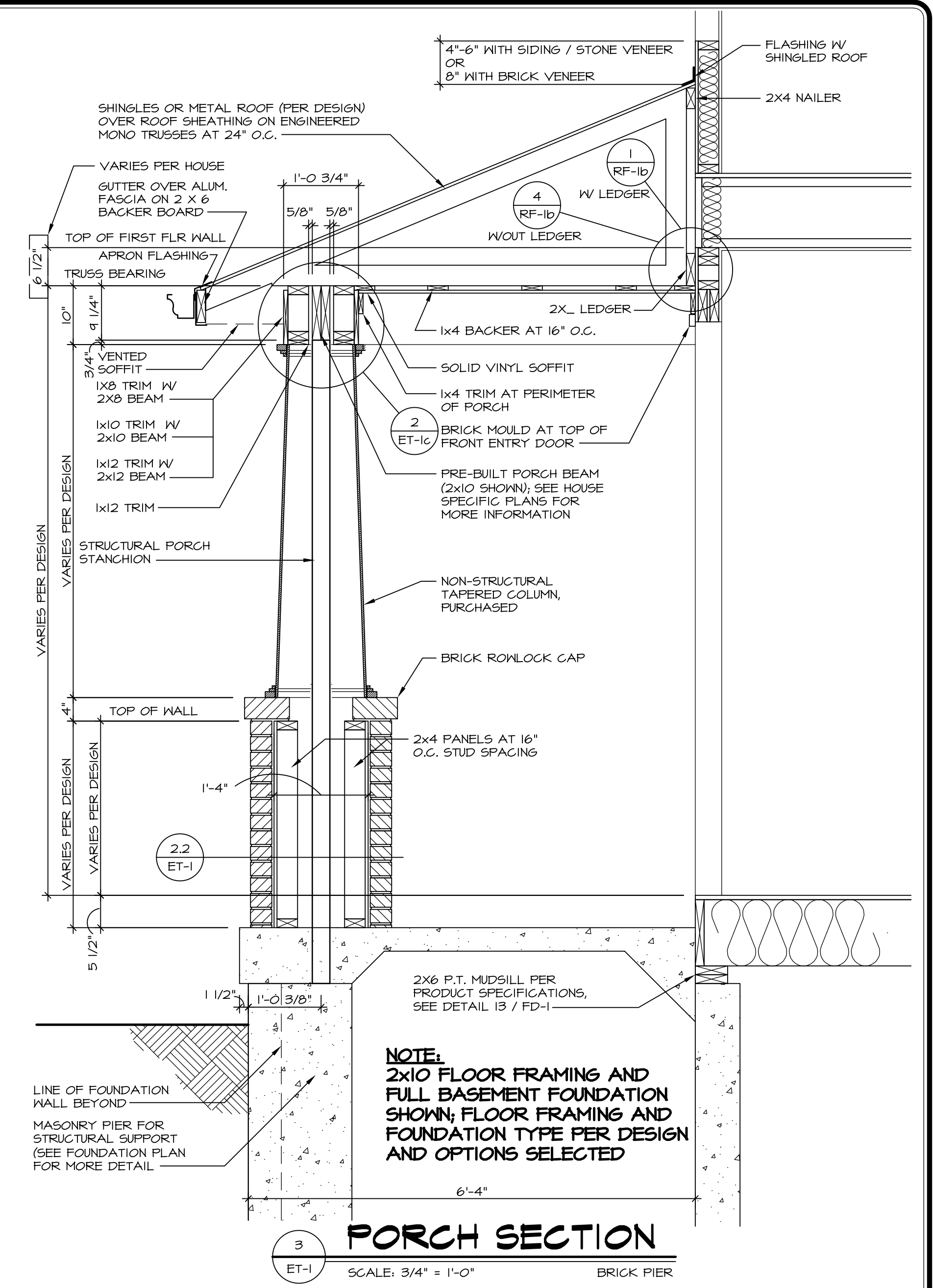
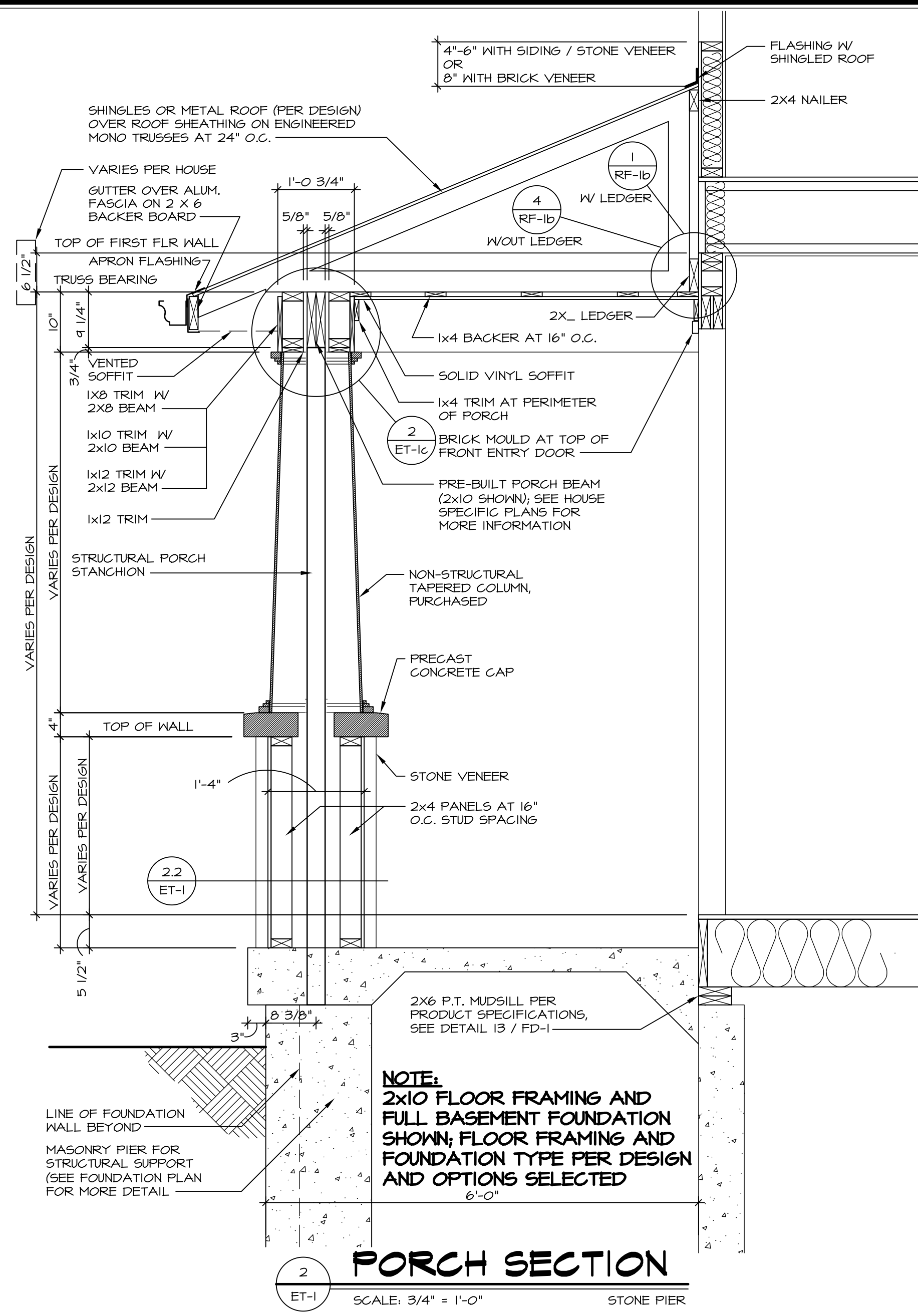
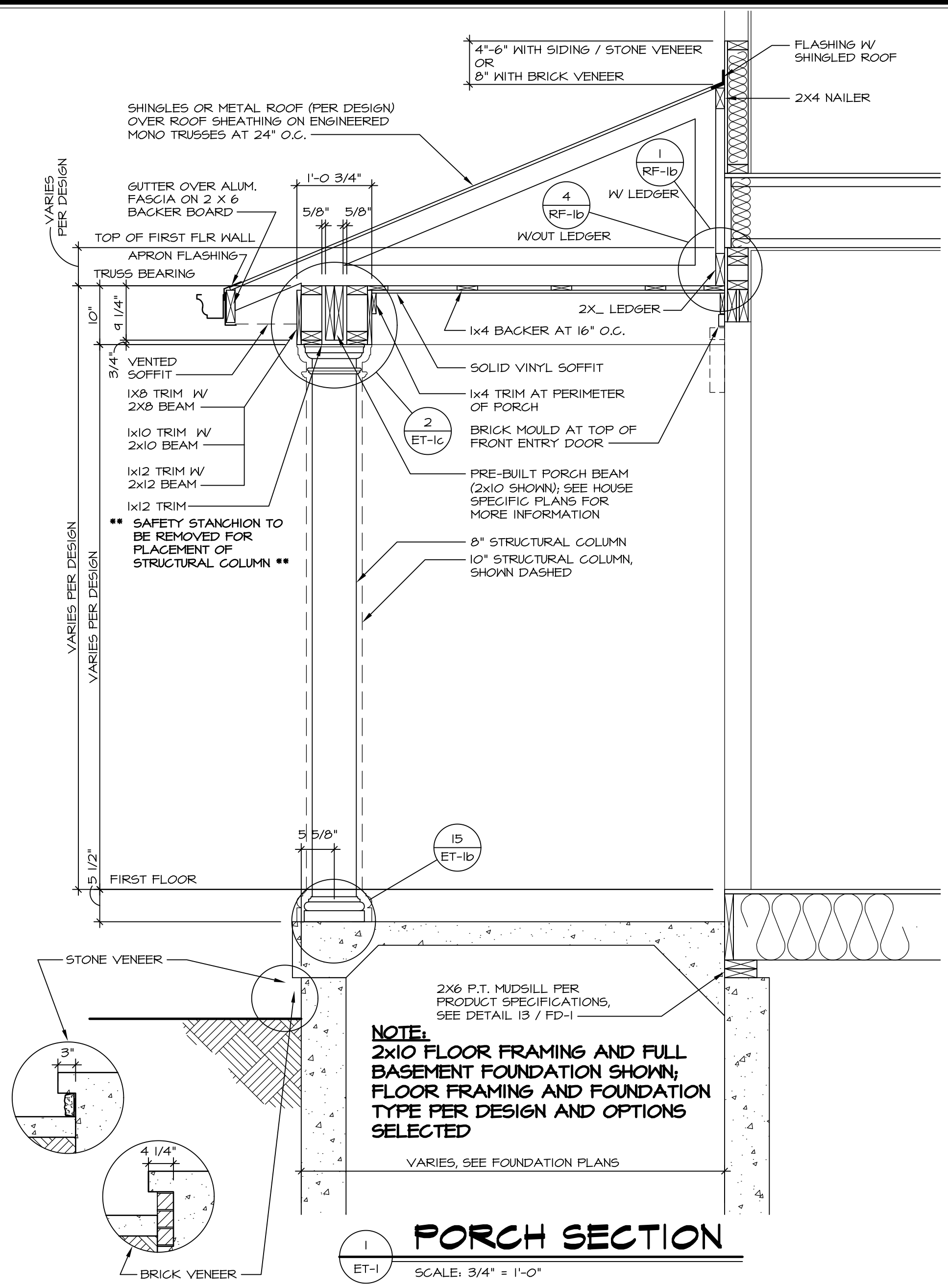
- TEMPERED GLASS SHOWER ENCLOSURE WITH SWING DOOR OR OPTIONAL SLIDING DOOR BY DIVISION
- TUB ACCESS PANELS PROVIDED AS NEEDED, ALL MATERIALS BY DIVISION
- REFER TO SHEET (IT-2) FOR TUB AND SHOWER DETAILS.
- ALL V5DB24-42 DRAWERS TO BE SET ON RIGHT HAND.
- BATH ELEVATIONS ARE SHOWN PER PLAN.

SHEET NO.	MODEL	SET NO.	DUNCO
A-13	DUNKIRK	VERSION OF	
45	BATH ELEVATIONS	DRAWN BY	
		DATE:	
		OPTION	

**NVR**  
NVR, Inc.  
Architectural Services  
5285 West... Suite 100  
Frederick, MD 21703

NVR, Inc., owner, expressly reserves its common law copyright in these plans. These plans are not to be reproduced, changed, adapted in any way, or otherwise used, without the prior written consent of NVR, Inc.

REV. NO.	DATE	REMARKS



REV. NO.	DATE	REMARKS
1	12/9/16	EHS - REMOVED 2 X 12 TRIM NOTES ON PORCH SECTIONS (PER REQUEST #9591)
2	7/6/17	GJE - PORCH SAFETY STANCHION PROJECT
3	10/19/17	CGB - REVISED DIMENSIONS TO "VARIES PER DESIGN"
4	11/21/17	CGB - ADDED NOTES FOR 2x8 BEAMS
5	1/11/18	CGB - REVISED DETAIL BUBBLES AT THE LEDGERS
6	2/14/18	CGB - ADDED DETAILS 4 AND 5 FOR REAR PORCHES
7	2/20/18	CGB - REVISED TITLES FOR DETAILS 4 AND 5

SET NO. NVR  
VERSION  
DRAWN BY  
DATE:  
OPTION

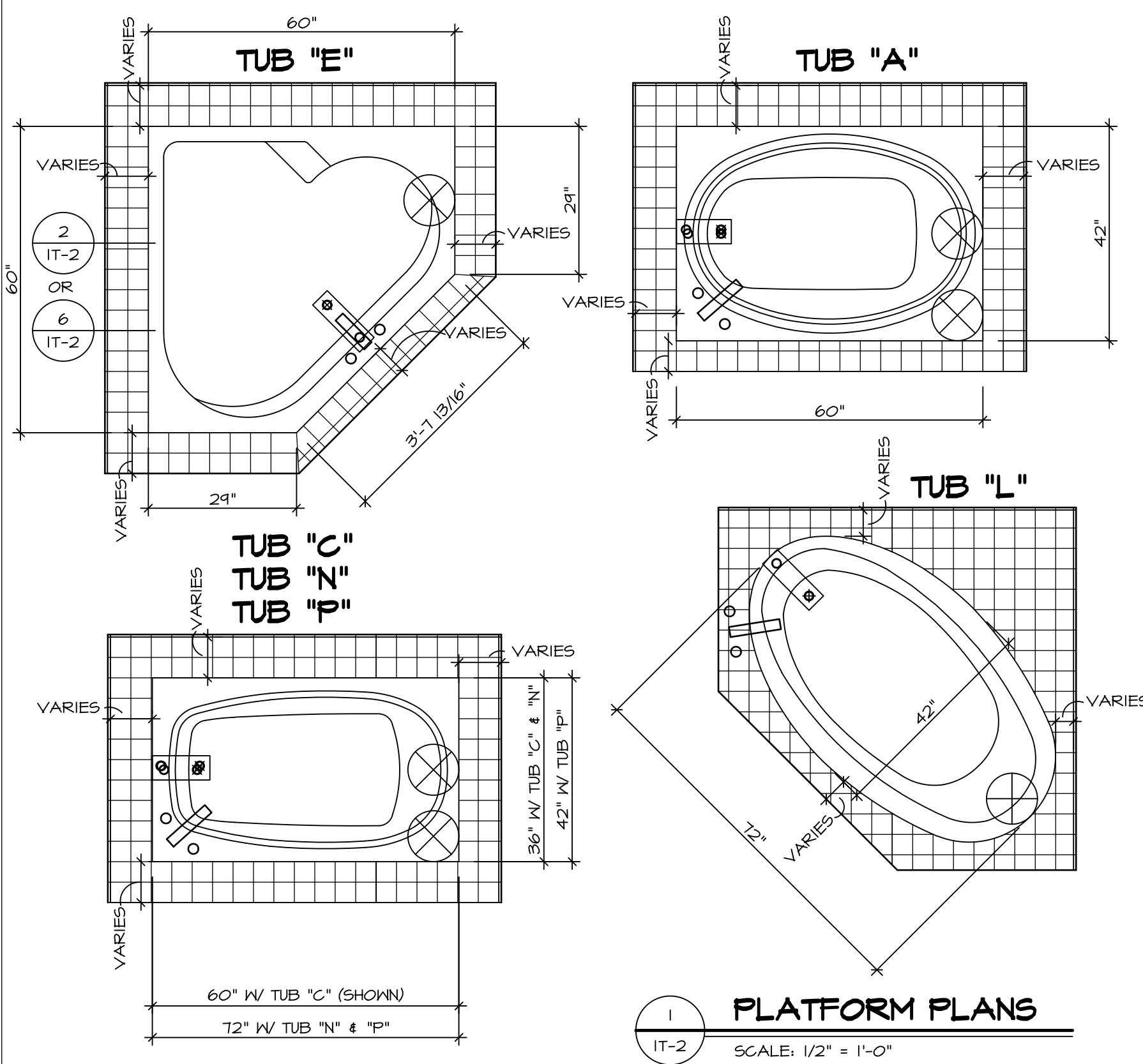
**STANDARD DETAILS**  
DRAWING TITLE  
EXTERIOR TRIM  
GENERAL DETAILS  
OPTION DESCRIPTION

**ET-1**

NVR, Inc., owner, expressly reserves its common law copyright and other proprietary rights in these plans. These plans are not to be copied, reproduced, or otherwise used in any way without the prior written consent of NVR, Inc. nor are they to be assigned to any third party, without first obtaining the expressed written consent of NVR, Inc.

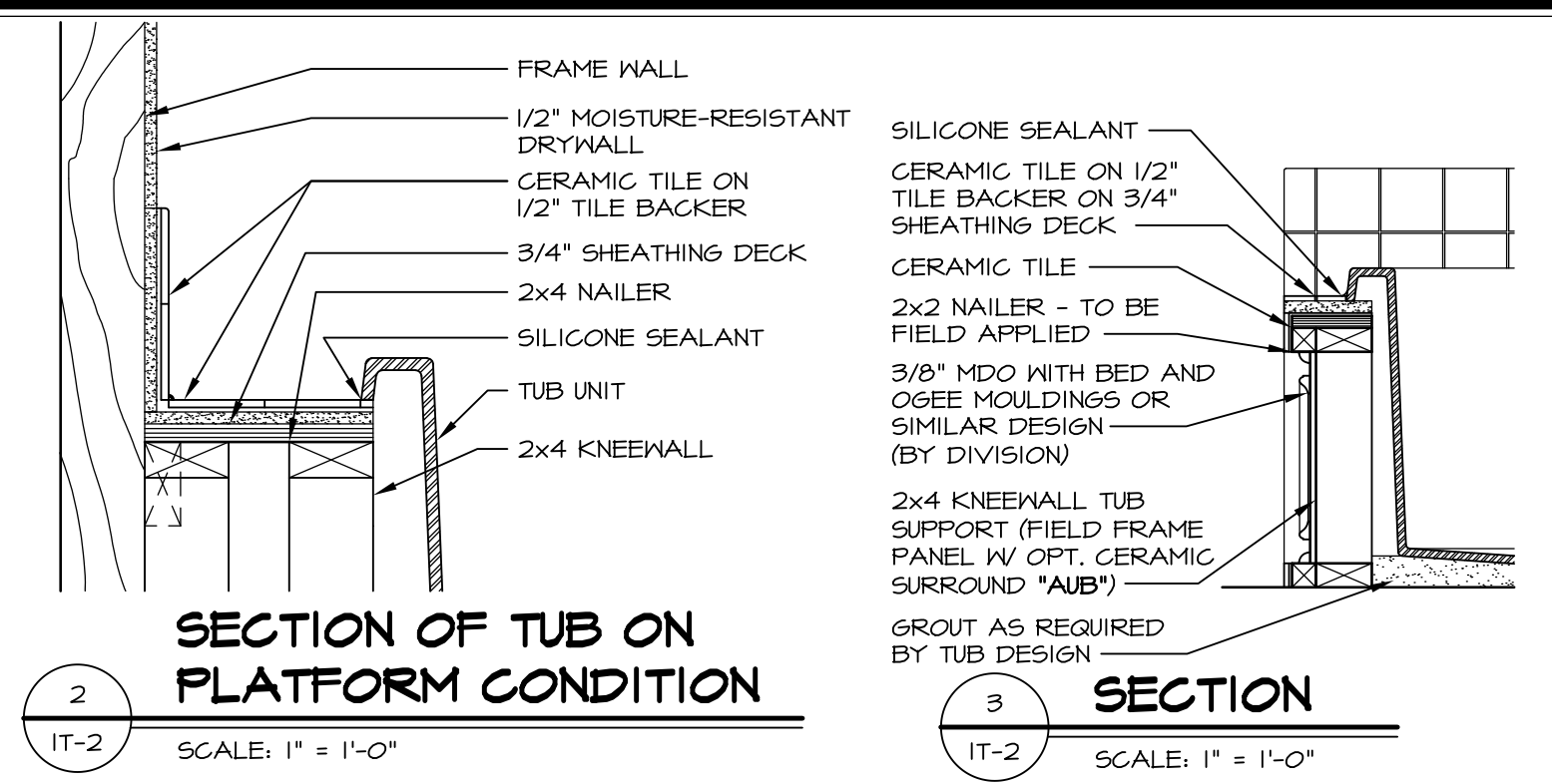
**NVR**  
NVR, Inc.  
Architectural Services  
Suite 100  
5285 Washington Blvd.  
Frederick, MD 21703

J:\Dwg\NVR\NVR-Exterior-Trim\ET-1.dwg 03/22/18 - 7:42 gm

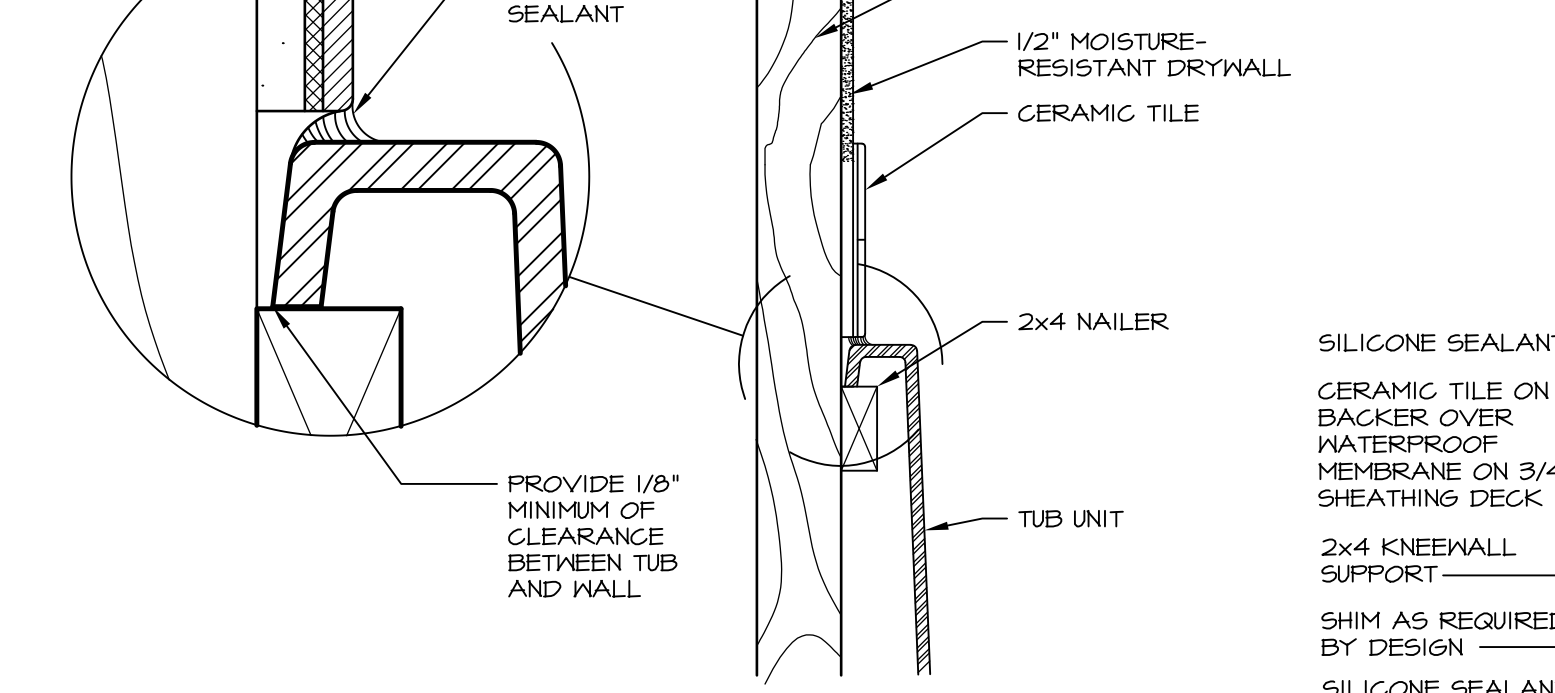


**1 PLATFORM PLANS**  
SCALE: 1/2" = 1'-0"

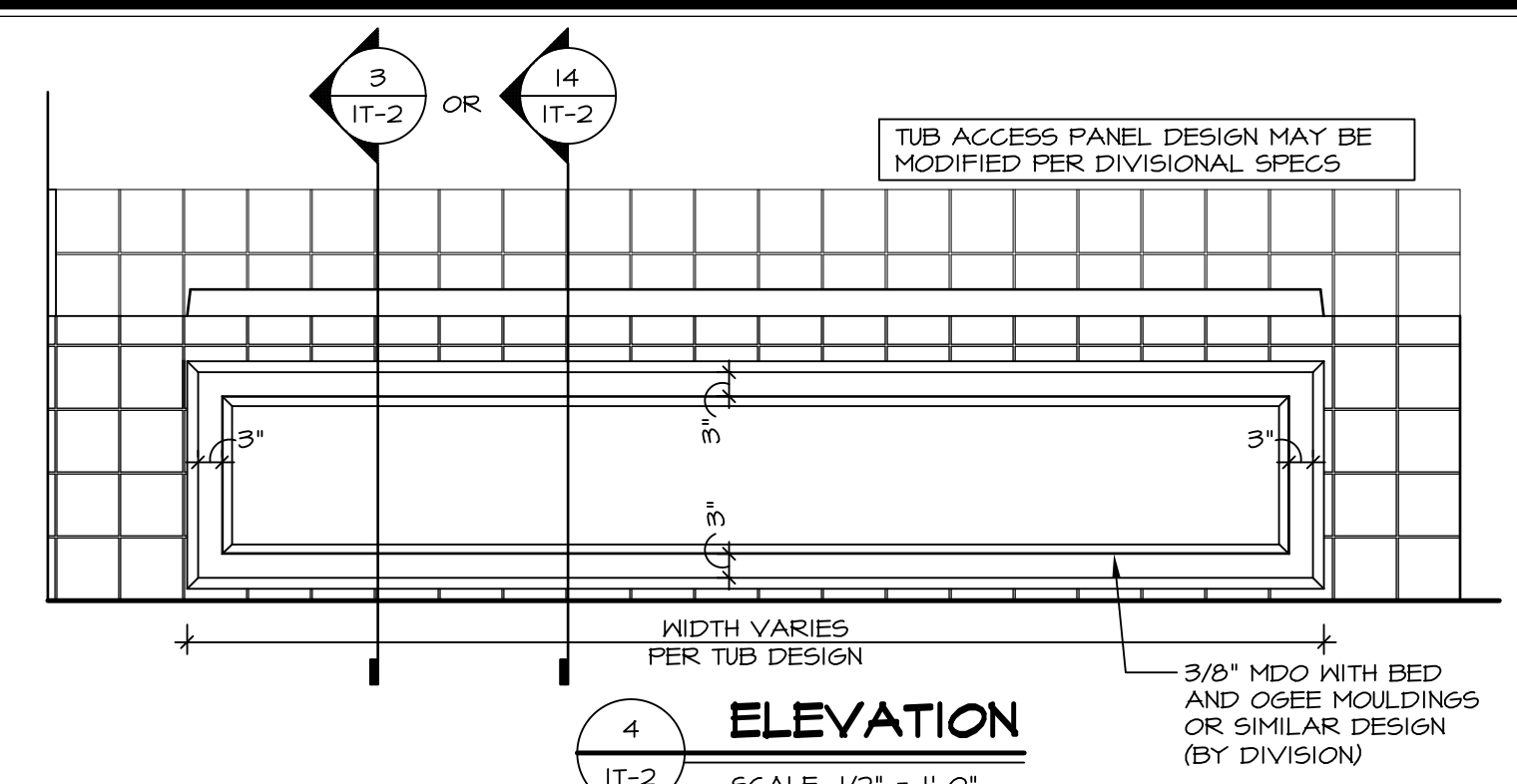
TUB	MANUF.	HEIGHT	WIDTH	LENGTH	TUB DECK PANEL HEIGHT
"A"	KOHLER/STERLING	18 3/4"	42"	60"	17 1/8"
"C"	KOHLER/STERLING	18 3/4"	36"	60"	17 1/8"
"E"	KOHLER/STERLING	19 1/2"	60"	60"	17 7/8"
"L"	KOHLER/STERLING	18 1/2"	42"	72"	16 7/8"
"N"	KOHLER/STERLING	18 3/4"	36"	72"	17 1/8"
"P"	KOHLER/STERLING	18 3/4"	42"	72"	17 1/8"



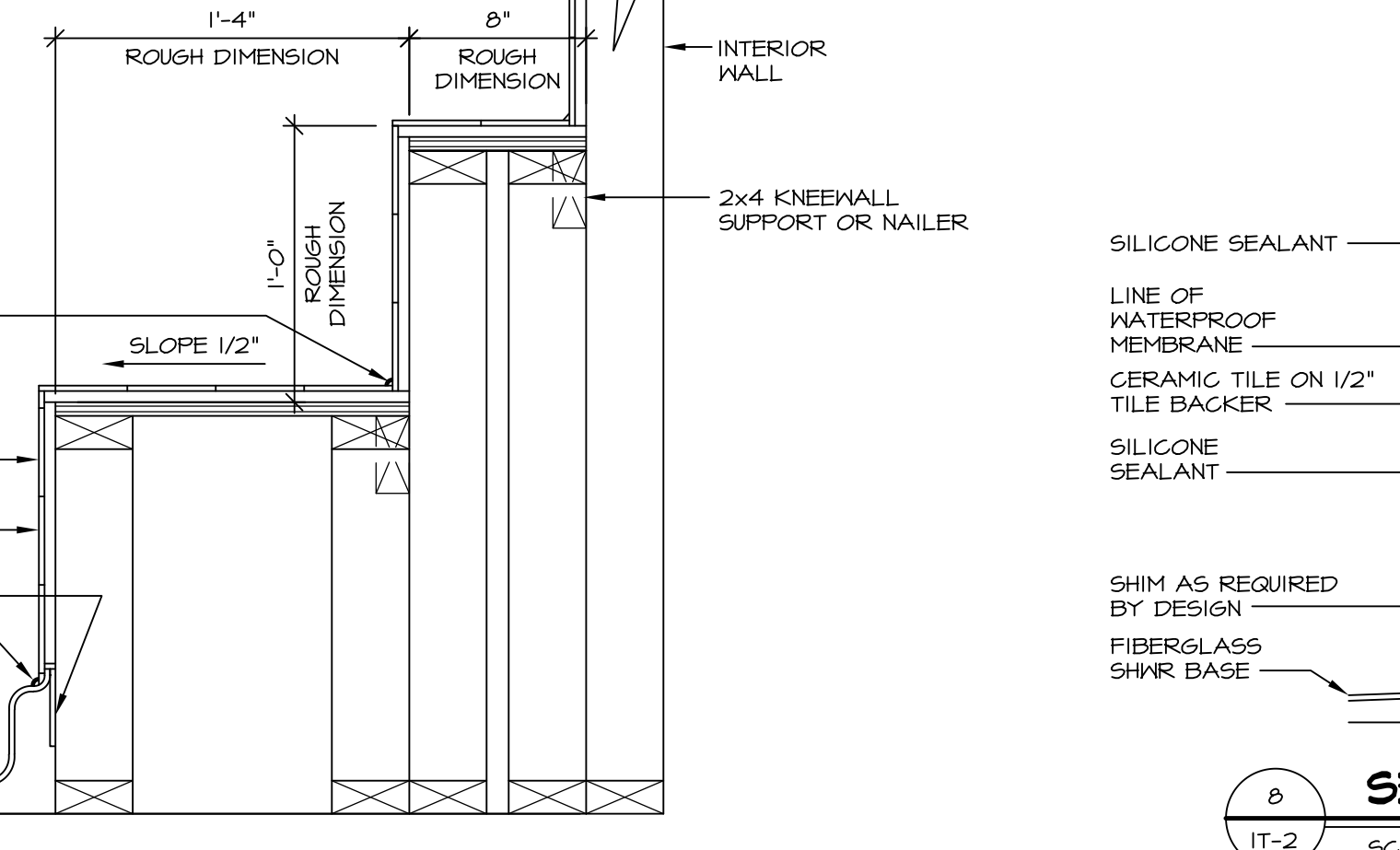
**2 SECTION OF TUB ON PLATFORM CONDITION**  
SCALE: 1" = 1'-0"



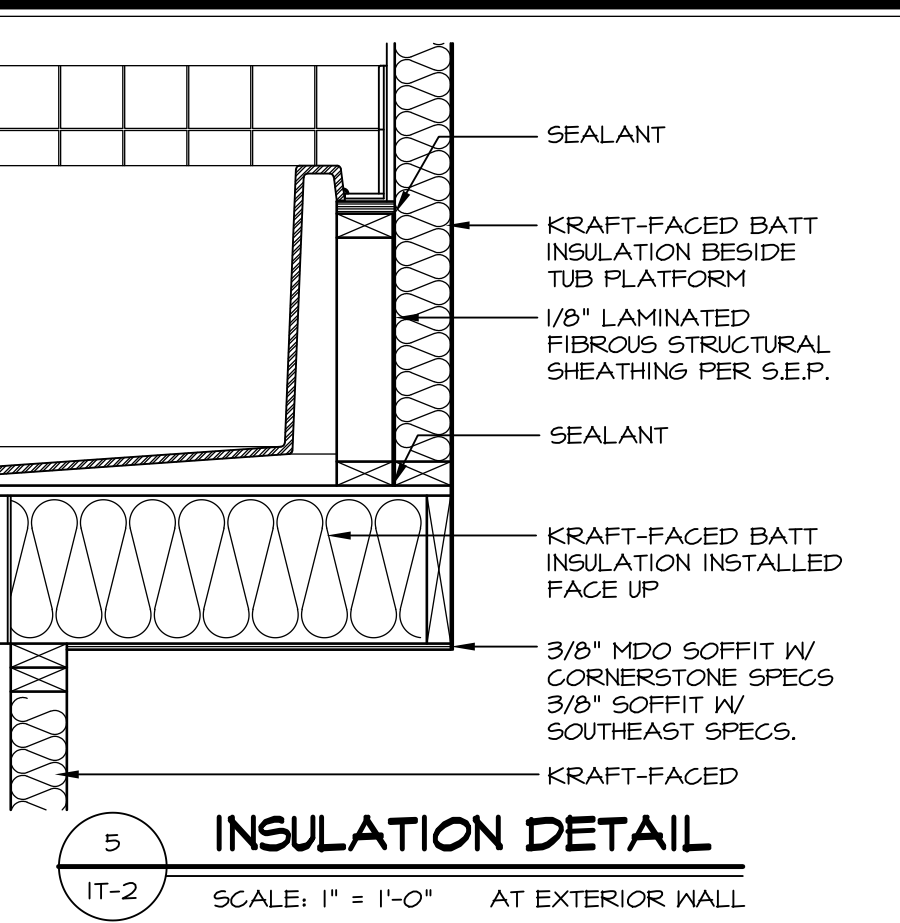
**3 SECTION OF TUB TO WALL CONDITION**  
SCALE: 1" = 1'-0"



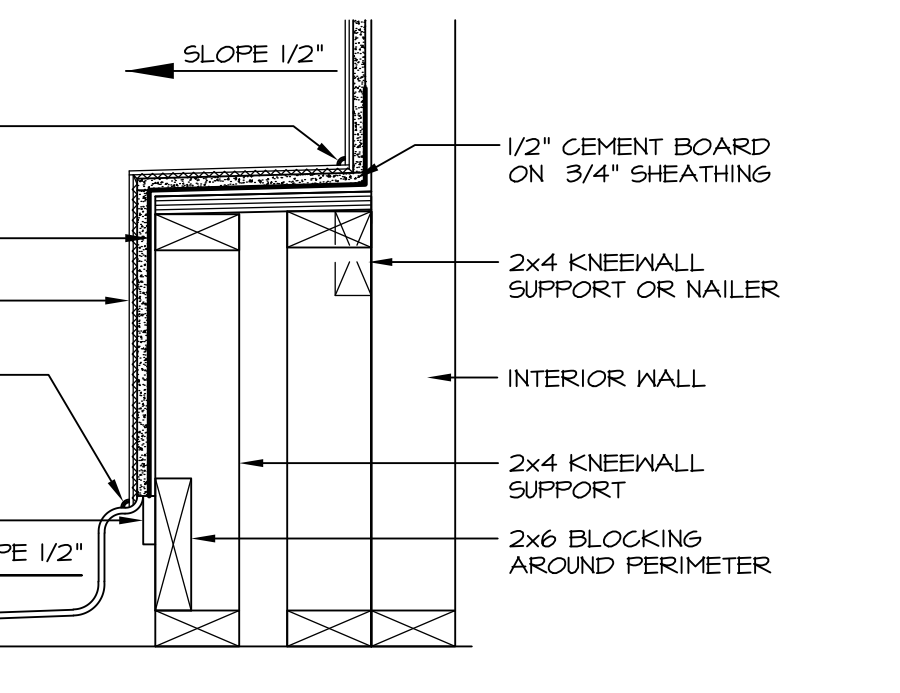
**4 ELEVATION**  
SCALE: 1/2" = 1'-0"



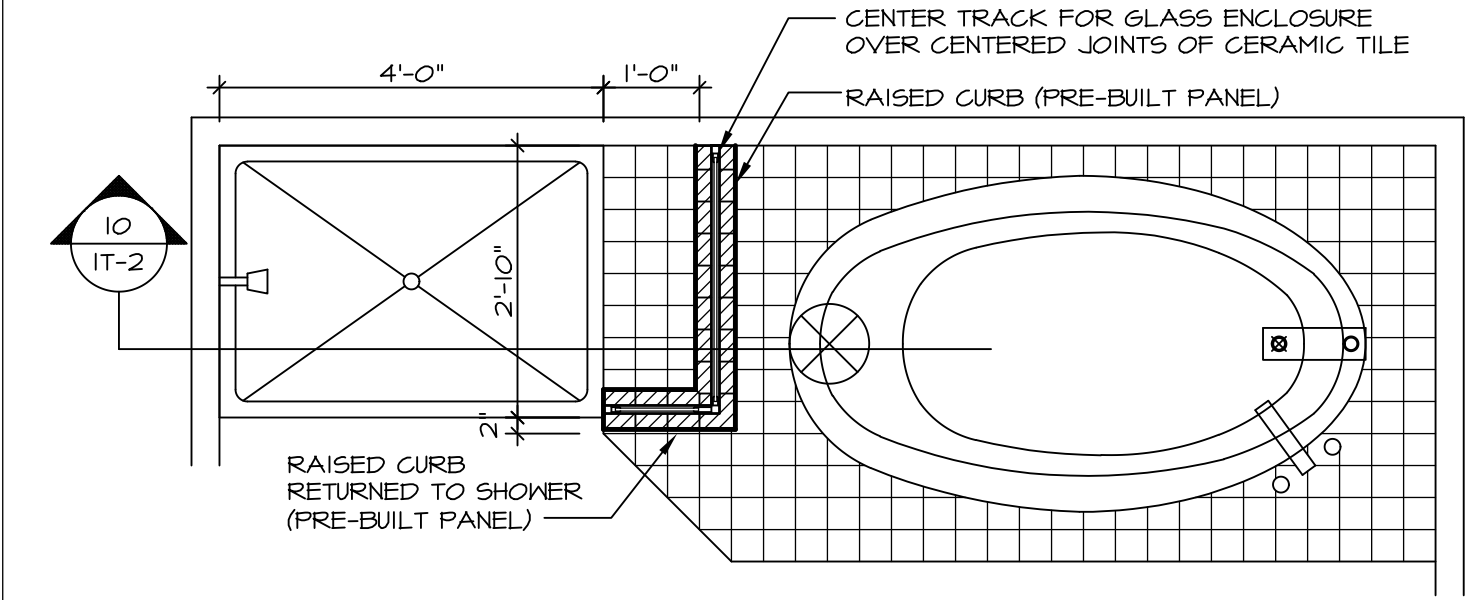
**7 SECTION OF SHOWER SEAT AND SHELF**  
SCALE: 1/2" = 1'-0"



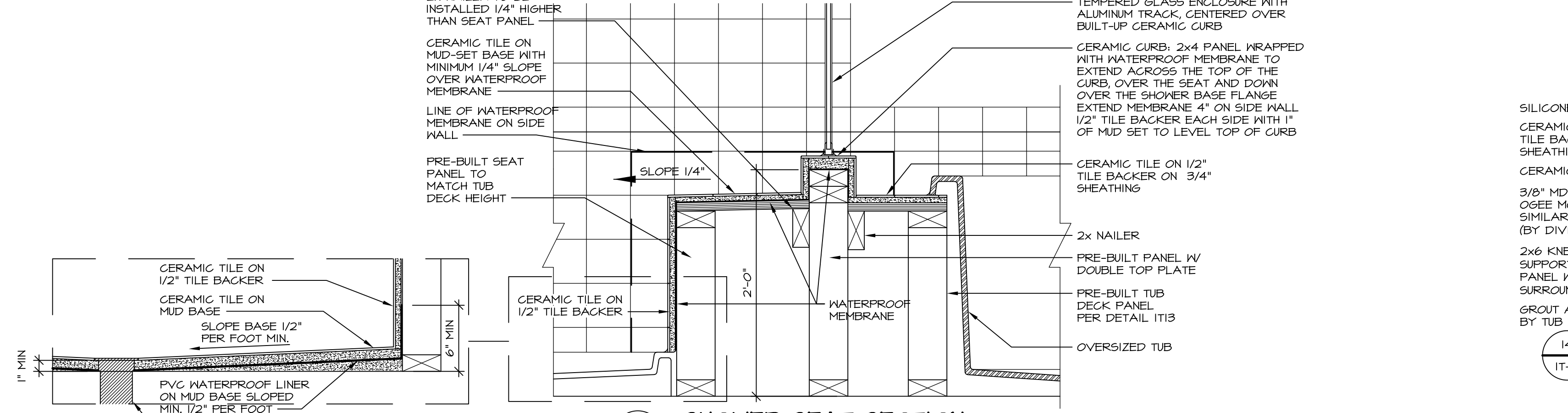
**5 INSULATION DETAIL**  
SCALE: 1" = 1'-0" AT EXTERIOR WALL



**8 SECTION OF SHOWER SEAT**  
SCALE: 1/2" = 1'-0" FIBERGLASS SHOWER BASE



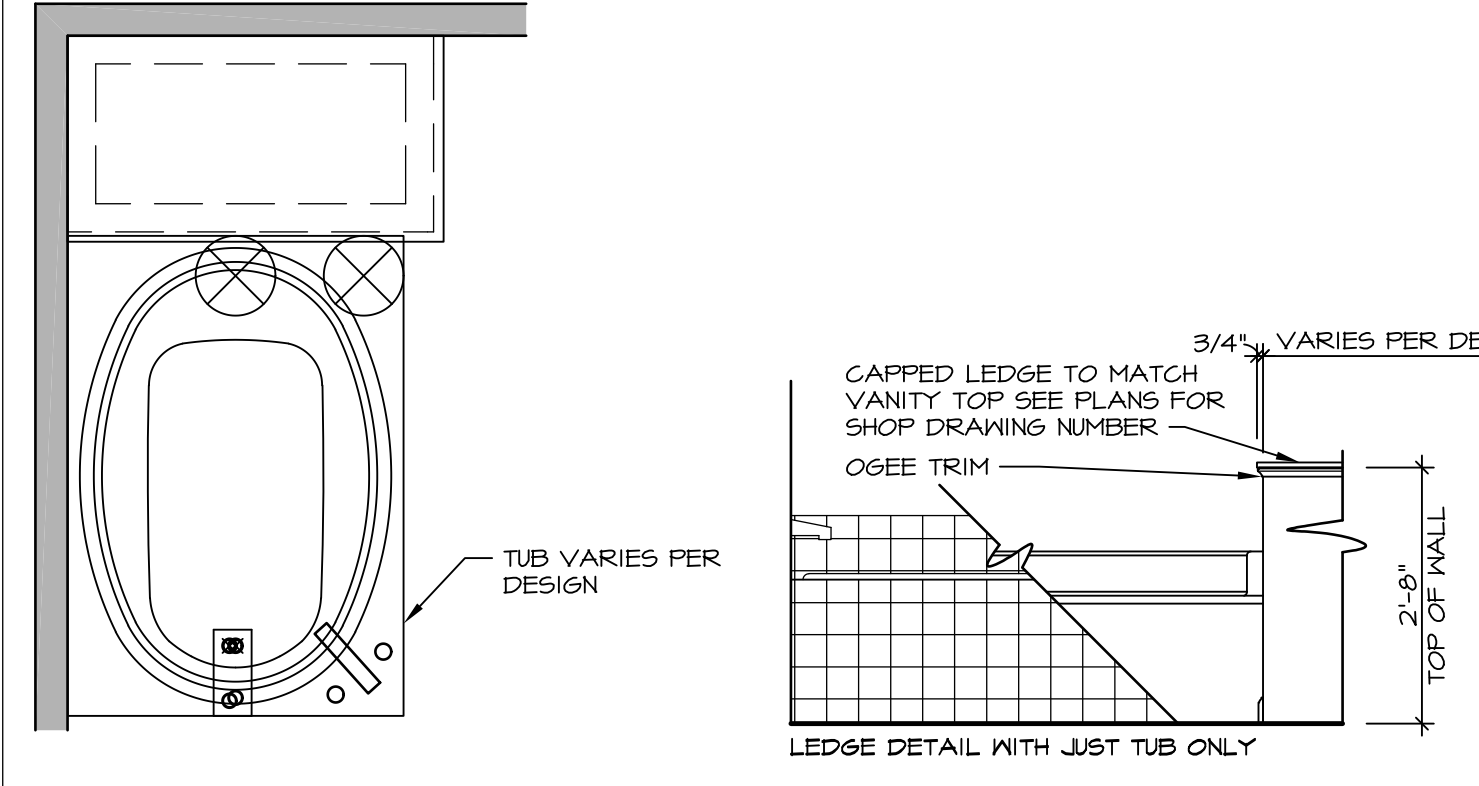
**9 SHOWER SEAT PLAN / DETAIL**  
SCALE: 1/2" = 1'-0"



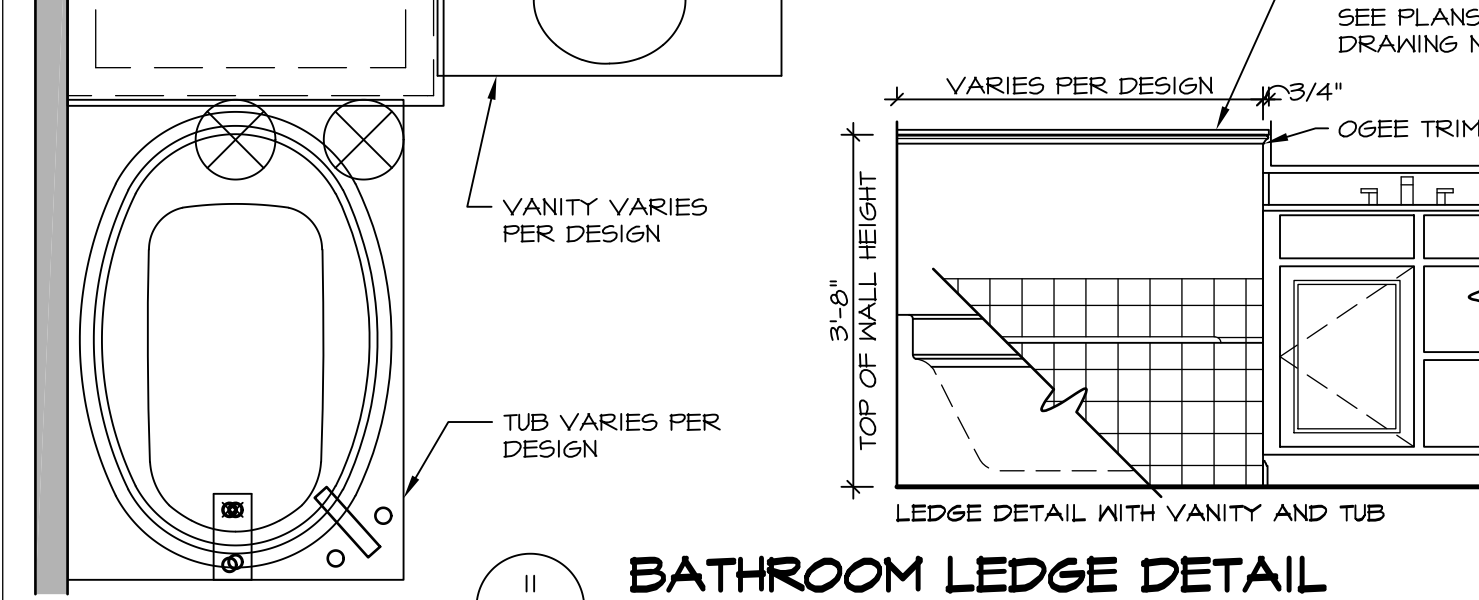
**10 SHOWER SEAT SECTION**  
SCALE: 1/2" = 1'-0"



**12 SILL DETAIL**  
SCALE: 1" = 1'-0"



**11 BATHROOM LEDGE DETAIL**  
SCALE: 1/2" = 1'-0"



**13 SHOWER SEAT SECTION**  
SCALE: 1/2" = 1'-0" MUD-SET SHOWER

REVISIONS

REV. NO.	DATE	DESCRIPTION
1	5/1/17	EBP - REVISED DETAIL 1 AND 11 TO REMOVE TUB ACCESS PANEL REF. (DSS #15 5414)
2	9/2/17	EBP - REVISED T-FLY NOTE TO CALL OUT LFS
3	9/2/17	EBP - REVISED NOTE ON DETAIL #1 - REVISED ORDER OF MATERIAL PARA#6934

REMARKS

NVR, Inc., owner, expressly reserves its common law copyright and other property rights in these plans. These plans are not to be reproduced, copied, or otherwise used in any way without the written consent of NVR, Inc.

**NVR**  
Architectural Services  
5285 Westpark Drive  
Frederick, MD 21703

SET NO. NVR  
VERSION  
DRAWN BY  
DATE:  
OPTION

MODEL  
**STANDARD DETAILS**  
DRAWING TITLE  
INTERIOR TRIM DETAILS  
BATH DETAILS  
OPTION DESCRIPTION

SHEET NO.  
**IT-2**

J:\Dwg\NVR\Interior Trim\IT2.dwg 09/27/17 - 9:20 am