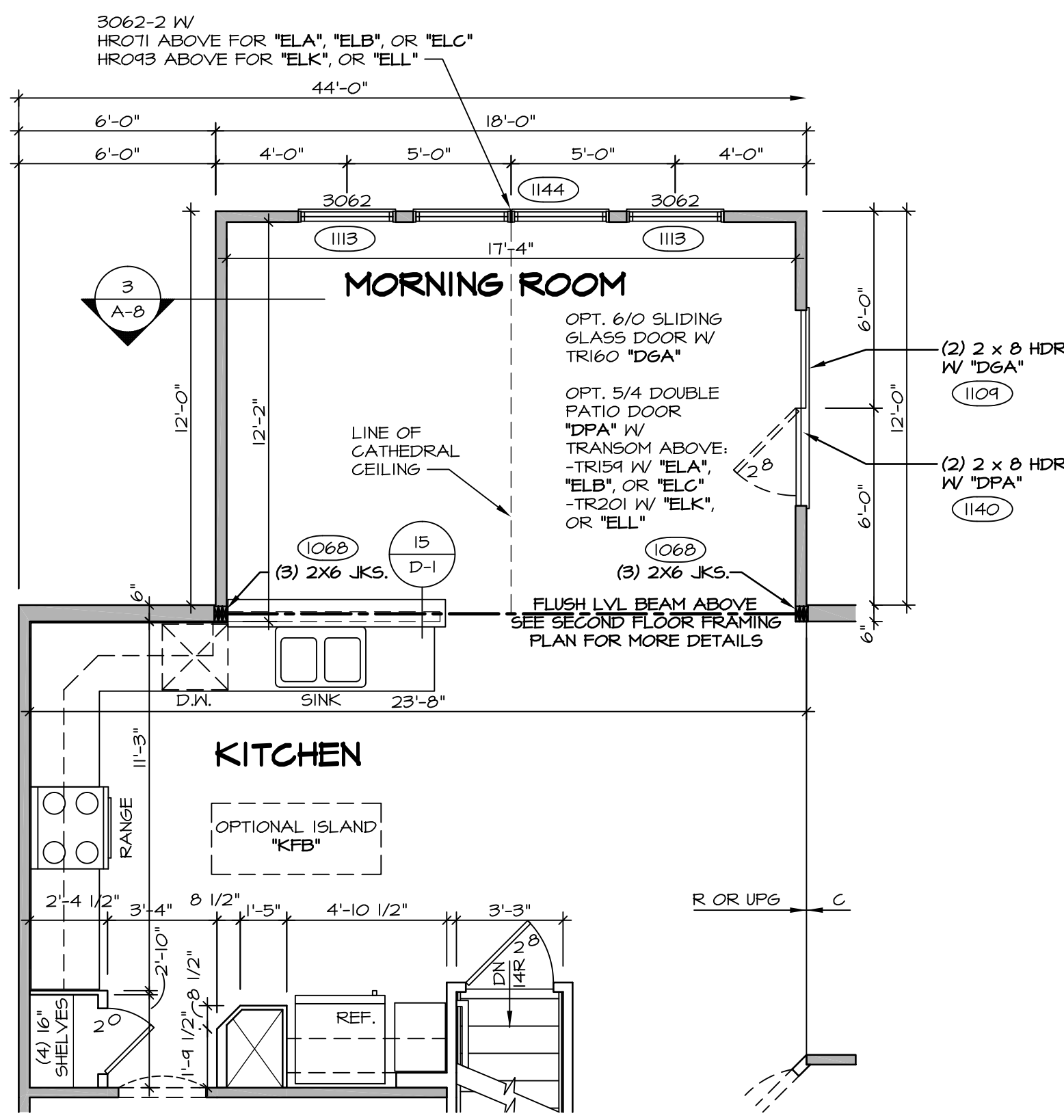
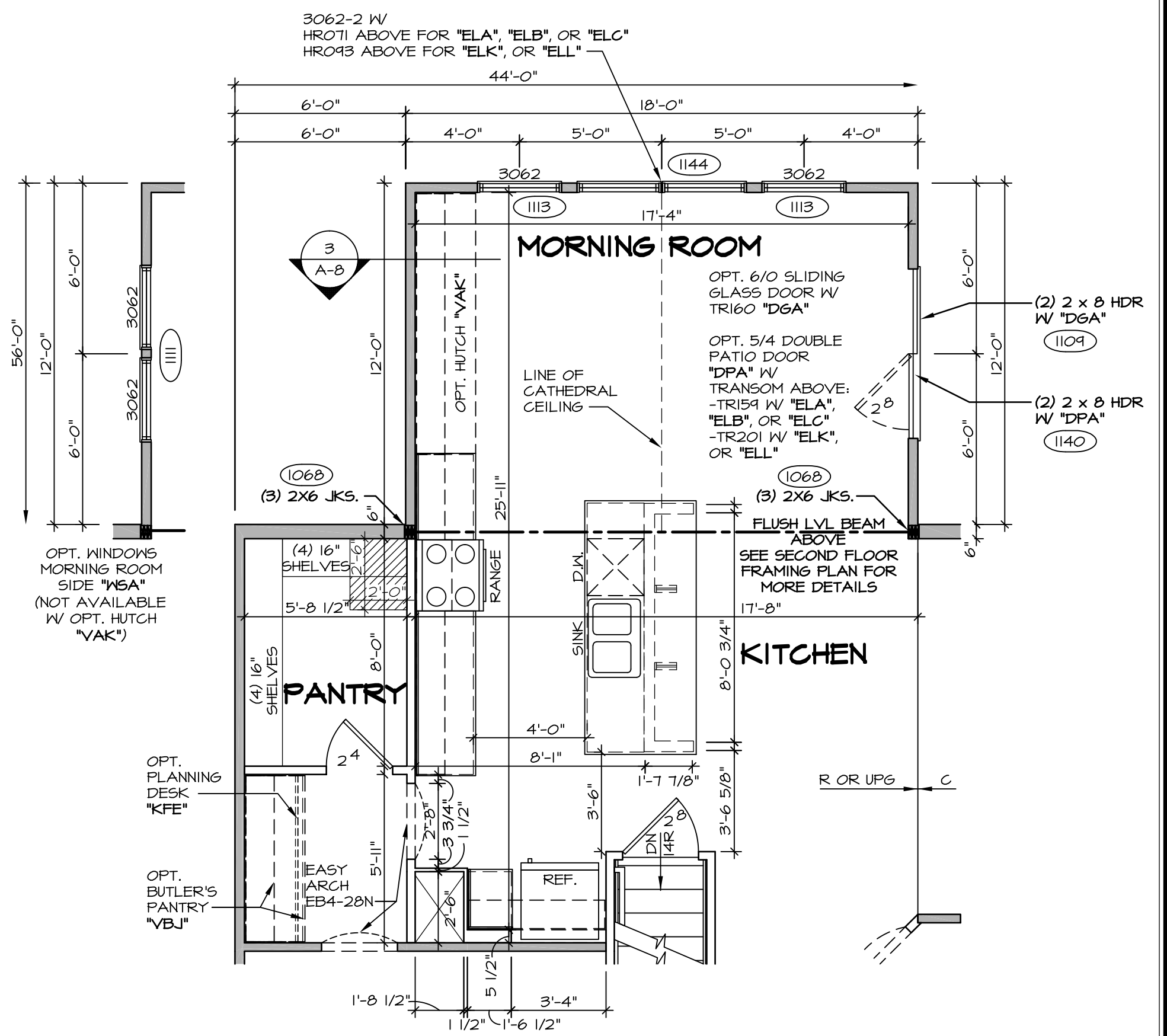


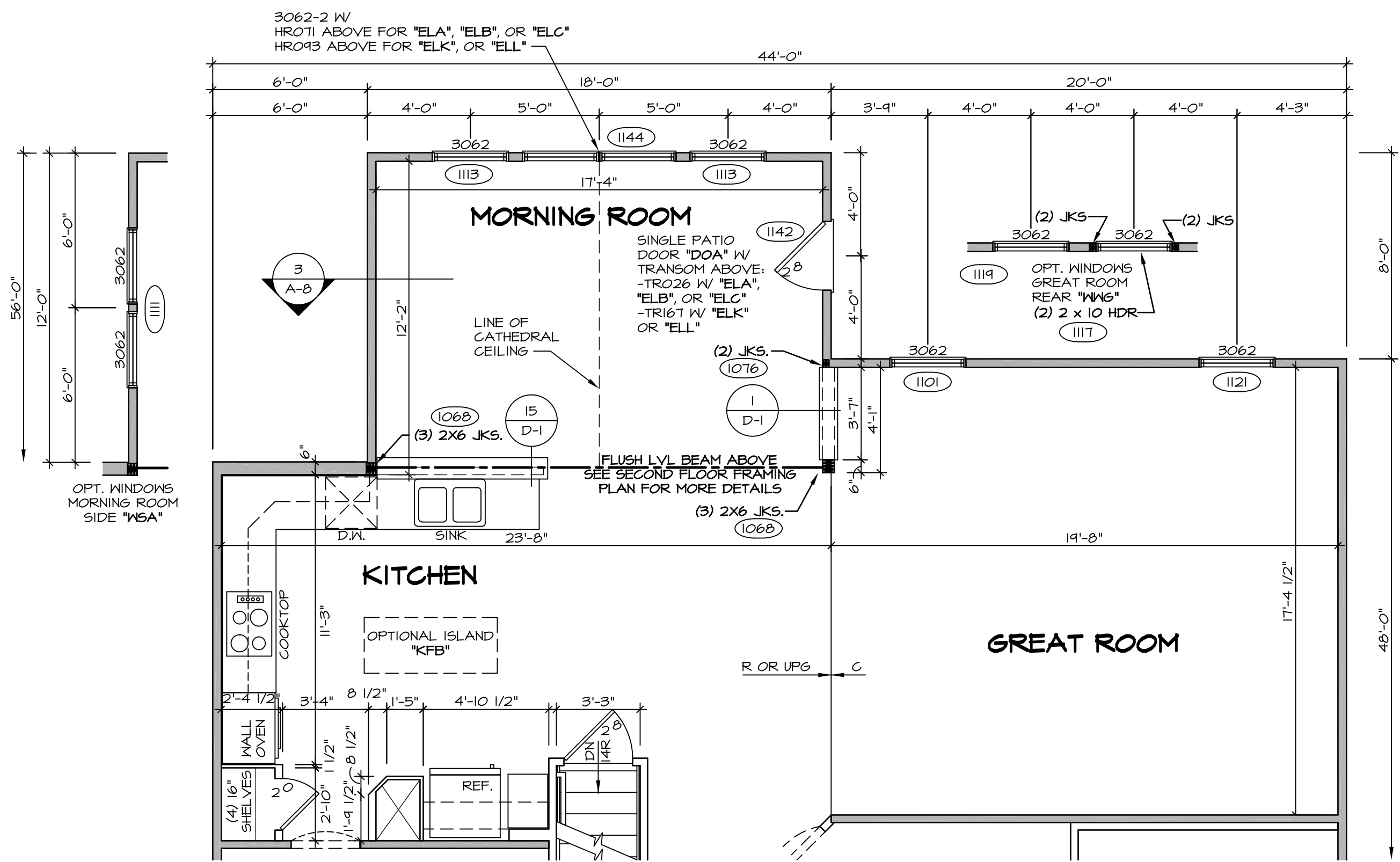
1 PARTIAL FIRST FLOOR PLAN
 SCALE: 1/4" = 1'-0"
 MORNING ROOM "MAA" W/ STD. KITCHEN LAYOUT "KDA" W/ GOURMET ISLAND "KFF" (SHOWN W/ UPG. KITCHEN "KAF")



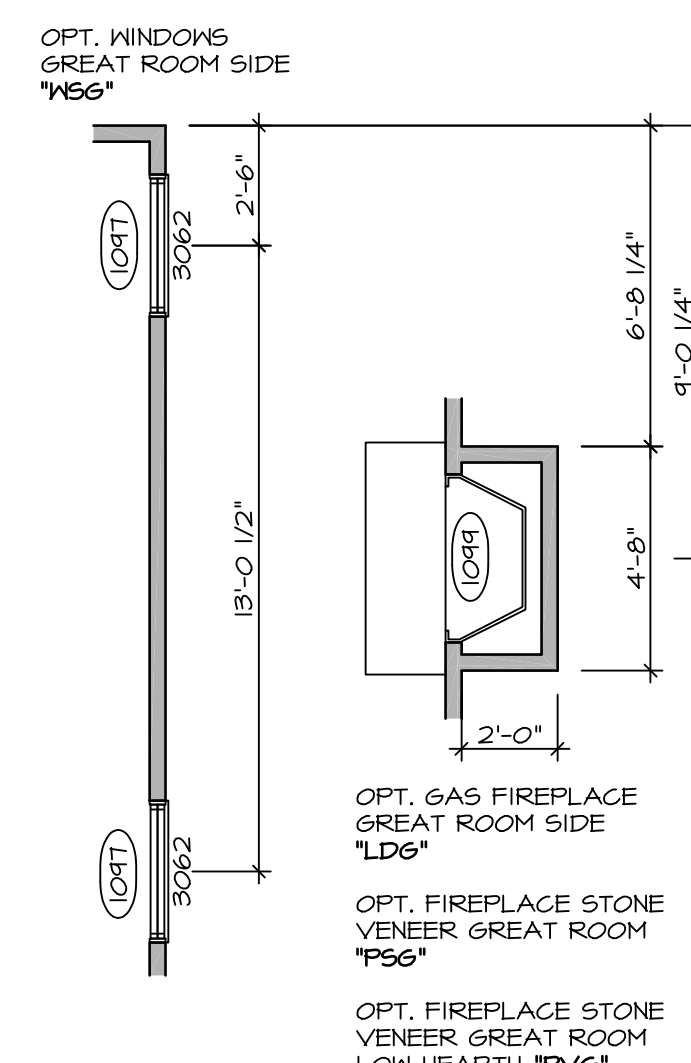
2 PARTIAL FIRST FLOOR PLAN
 SCALE: 1/4" = 1'-0"
 MORNING ROOM "MAA" (SHOWN W/ STD. KITCHEN "KAA")



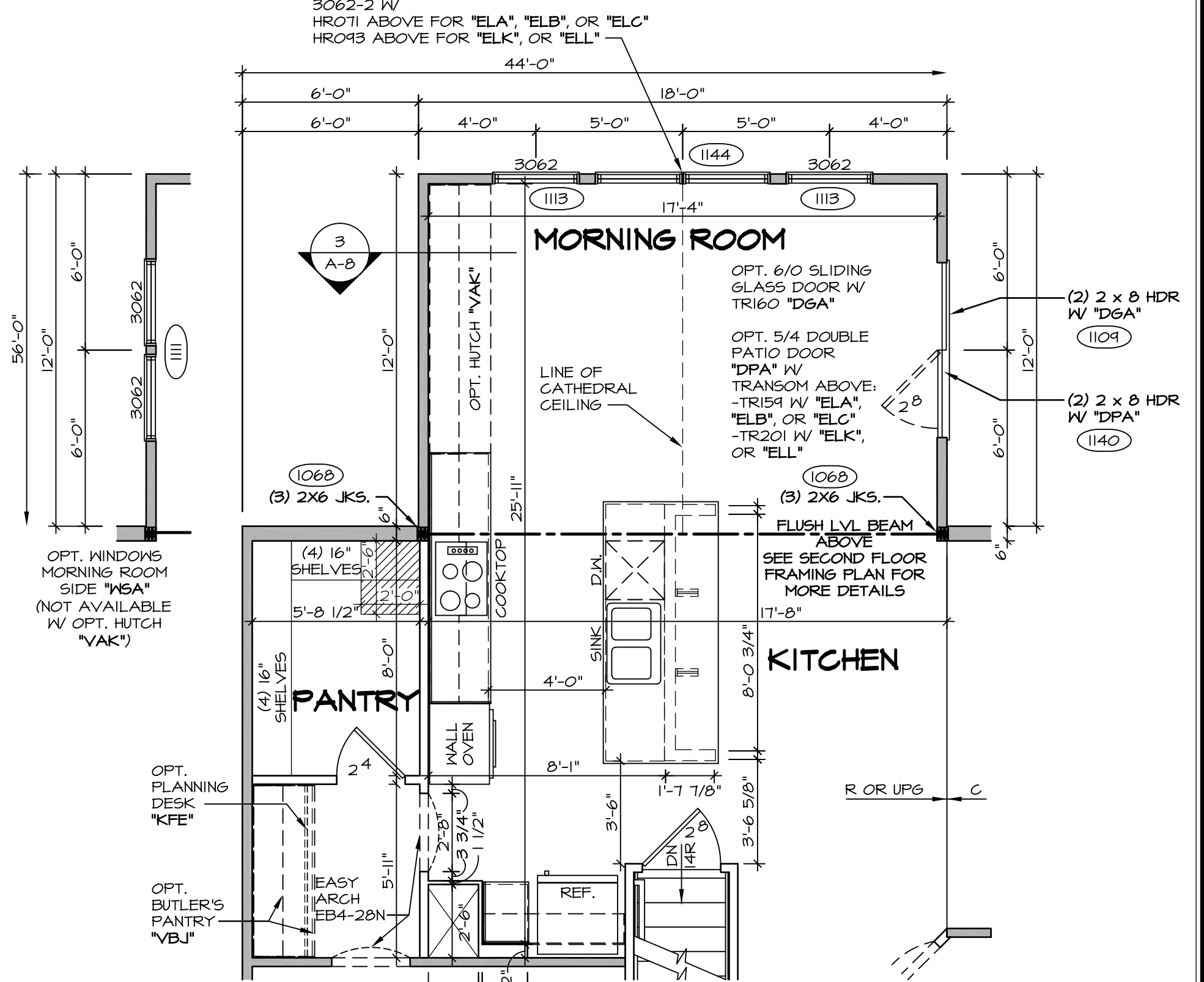
4 PARTIAL FIRST FLOOR PLAN
 SCALE: 1/4" = 1'-0"
 MORNING ROOM "MAA" W/ ALT. KITCHEN LAYOUT "KDB" W/ GOURMET ISLAND "KFF" (SHOWN W/ STD. KITCHEN "KAA")



3 PARTIAL FIRST FLOOR PLAN
 SCALE: 1/4" = 1'-0"
 MORNING ROOM "MAA" W/ 4'-0" EXTENSION TO HOUSE "EDG" (SHOWN W/ UPG. KITCHEN "KAF")

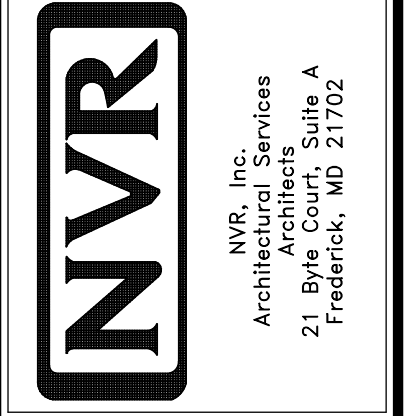


- NOTES:**
- ▬ BEARING WALL
 - ▬ NON BEARING WALL
 - (X) ENGINEERING PAGE NUMBER
1. ALL HEADERS ARE (2) 2x6 W/ 2x4 WALLS OR (3) 2x6 W/ 2x6 WALLS, UNLESS OTHERWISE NOTED.
 2. ALL HEADERS TO HAVE (1) 2x4 OR 2x6 JACK EACH END, UNLESS OTHERWISE NOTED.
 3. ALL EXTERIOR WALLS TO BE 6" AND ALL INTERIOR WALLS TO BE 3 1/2", UNLESS OTHERWISE NOTED.
 4. HATCHED AREAS INDICATE DROPPED CEILING.
 5. SEE "BRACED WALL PANEL DETAIL SHEET" FOR SPECIAL WALL FRAMING LOCATIONS AND HEADER SIZES, IF APPLICABLE.
 6. SEE STANDARD DETAIL SHEET D-1 FOR TRIM OPTIONS (21 / D-1) AND DETAILS.
 7. ALL X662 WINDOWS HAVE 8'-0" 1/2" HEADER HEIGHT UNLESS OTHERWISE NOTED.

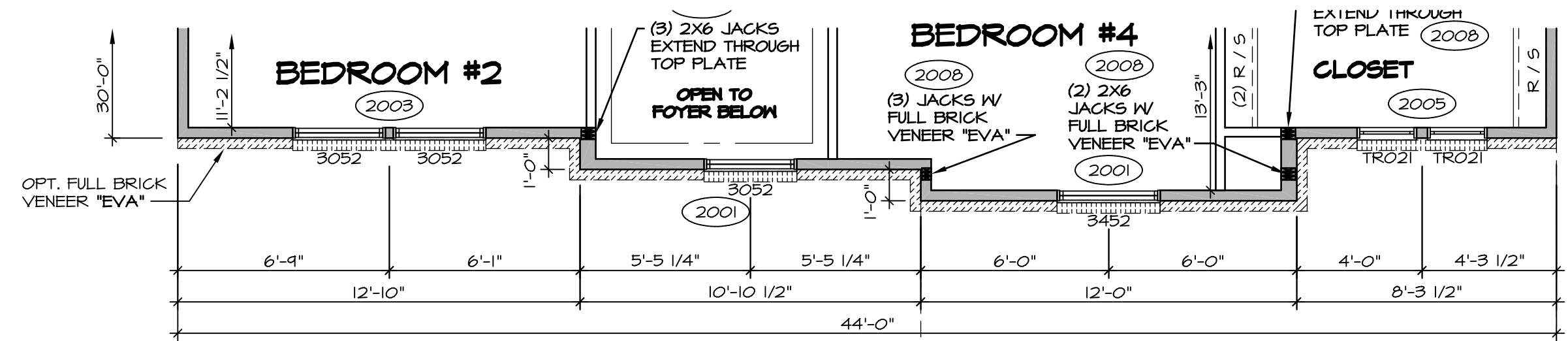


5 PARTIAL FIRST FLOOR PLAN
 SCALE: 1/4" = 1'-0"
 MORNING ROOM "MAA" W/ ALT. KITCHEN LAYOUT "KDB" W/ GOURMET ISLAND "KFF" (SHOWN W/ UPG. KITCHEN "KAF")

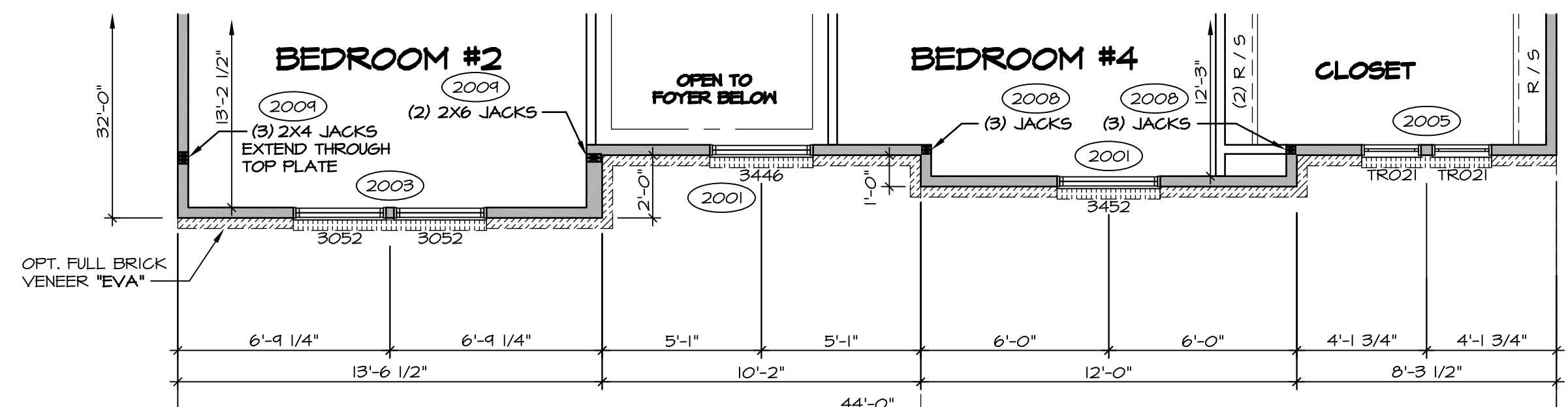
REV. NO.	DATE	REMARKS
1	10/29/13	SEA - CREATED VERSION 02
2	12/6/13	CSB - PROTOTYPED AUDIT REVISIONS
3	1/9/14	DCM - TRIM REVISIONS
4	4/17/14	SKM - REVISED THE WALL BETWEEN REFRIG. AND STAIR TO 2X6 FOR P.C. DRAIN
5	10/6/15	BKL - HISSG. HVAC REVISIONS
6	6/17/15	DBA - DOG LEG ISLAND PROTECT
7	10/05/15	DBA - REVISED DETAIL 4 AND 5. OPTION DESCRIPTION
8	2/14/16	J.P.R. - INCREASED CHASE FOR COUNTERTOP OVERHANGS W/ "KDB" (PAR 13162)



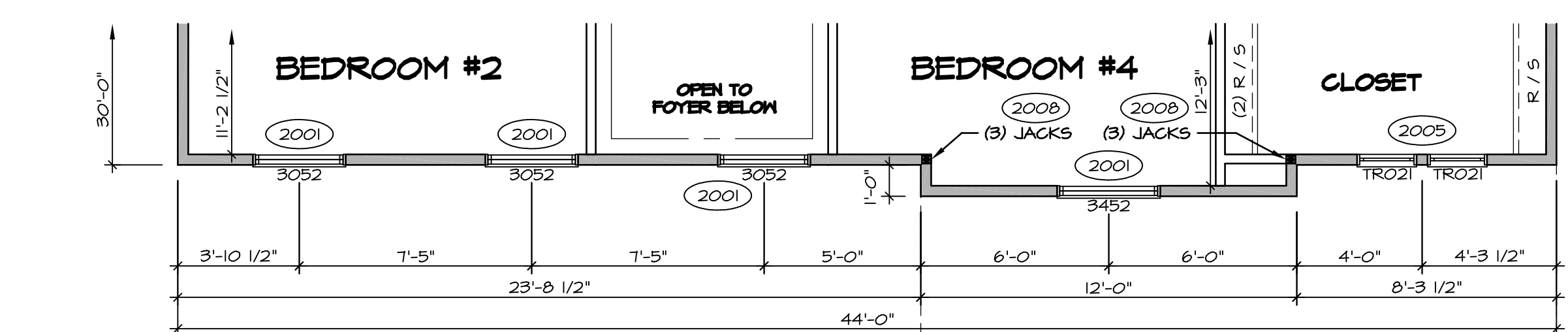
MODEL	DUNKIRK
SHEET NO.	A-6C
VERSION 02	
DRAWN BY	SLK
DATE	9/14/13
OPTION	MAA
DRAWING TITLE	PARTIAL FIRST FLOOR PLANS
DESCRIPTION	MORNING ROOM
	18



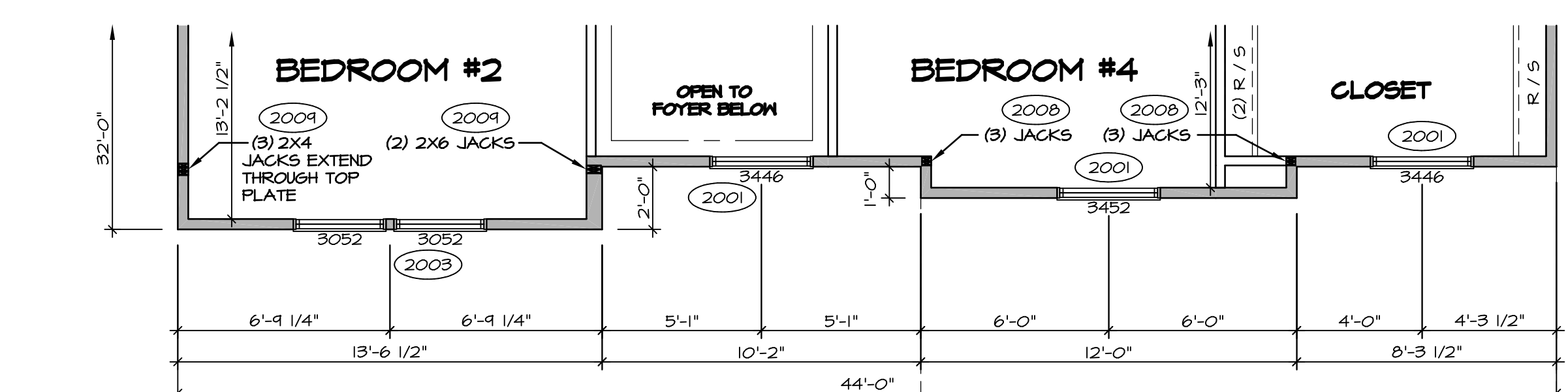
ELEVATION "B"
PARTIAL SECOND FLOOR PLAN
 SCALE: 1/4" = 1'-0"
 ELEVATION "B" "ELB"



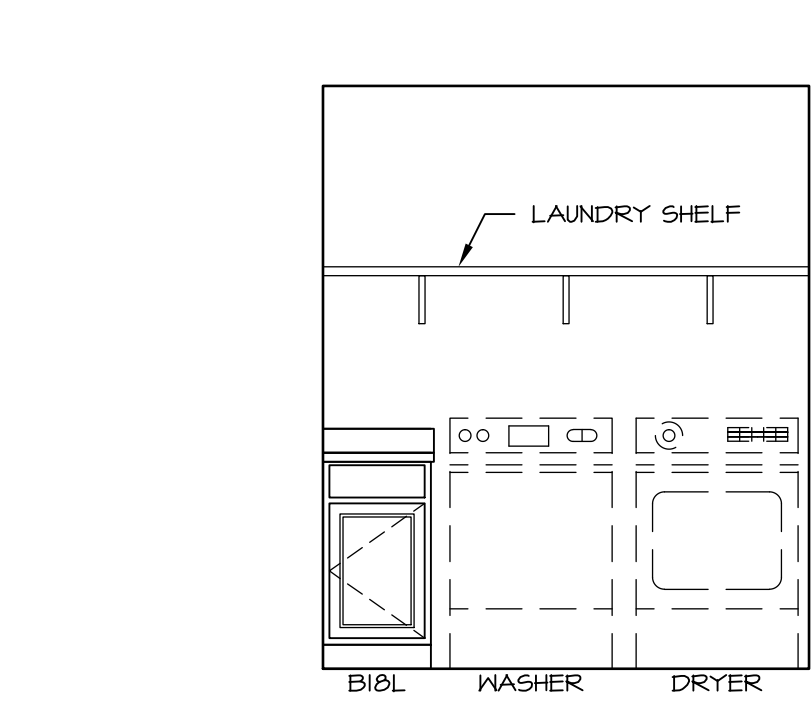
ELEVATION "C"
PARTIAL SECOND FLOOR PLAN
 SCALE: 1/4" = 1'-0"
 ELEVATION "C" "ELC"



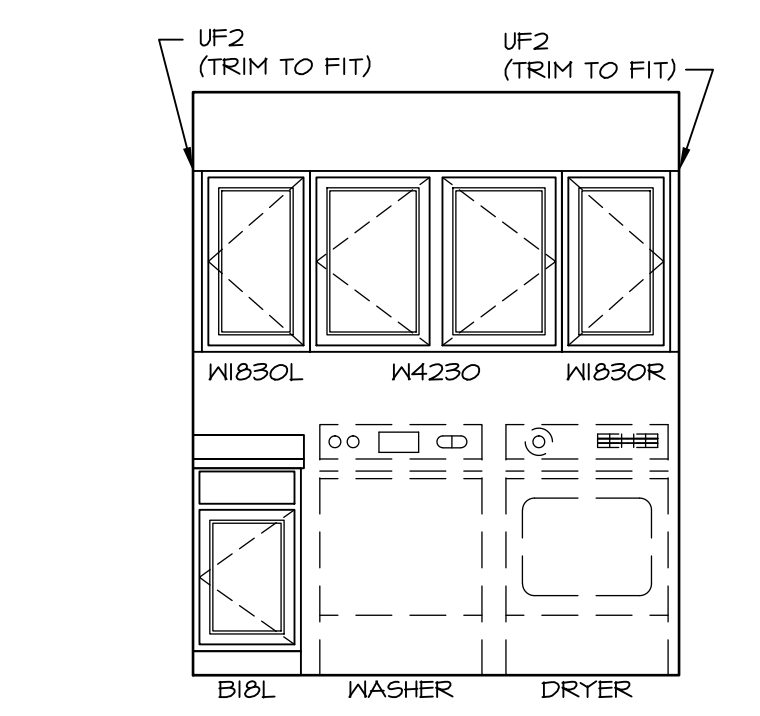
ELEVATION "K"
PARTIAL SECOND FLOOR PLAN
 SCALE: 1/4" = 1'-0"
 ELEVATION "K" "ELK"



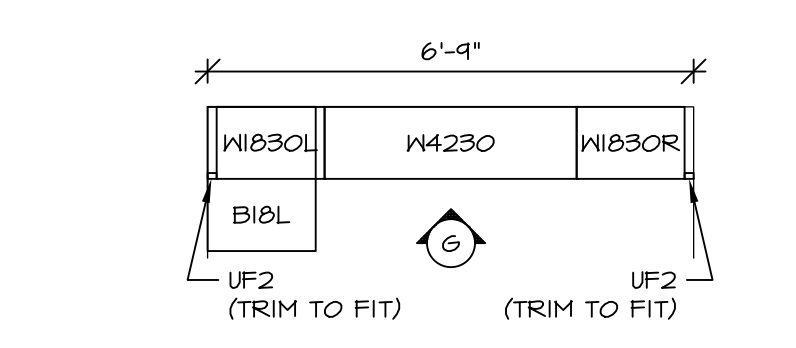
ELEVATION "L"
PARTIAL SECOND FLOOR PLAN
 SCALE: 1/4" = 1'-0"
 ELEVATION "L" "ELL"



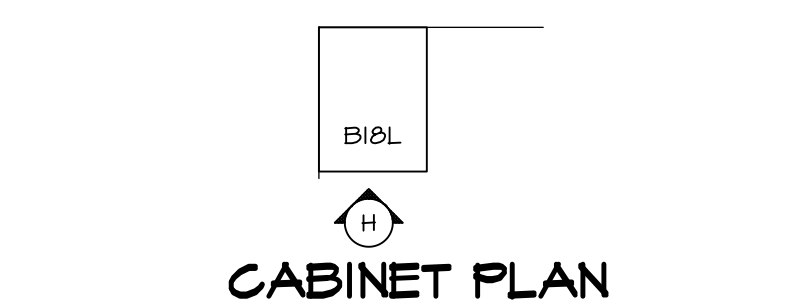
LAUNDRY ELEVATION
 SCALE: 3/8" = 1'-0"
 LAUNDRY SHELF WITH BASE CABINET "VAL"



LAUNDRY ELEVATION
 SCALE: 3/8" = 1'-0"
 LAUNDRY CABINETS "VBK"



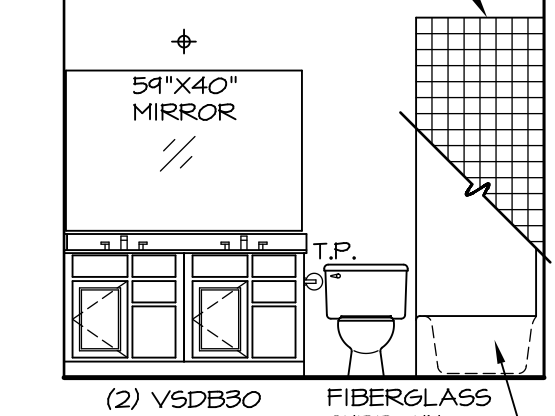
CABINET PLAN KC-4116
 SCALE: 3/8" = 1'-0"
 LAUNDRY CABINETS "VBK"



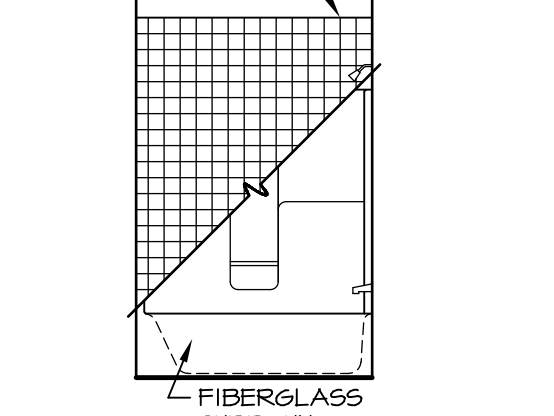
CABINET PLAN KC-4115
 SCALE: 3/8" = 1'-0"
 LAUNDRY SHELF W/ BASE CABINET "VAL"



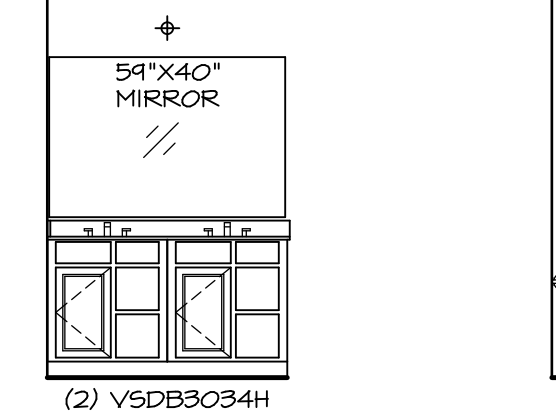
COUNTERTOP PLAN KT-4115 AND KT-4116
 SCALE: 3/8" = 1'-0"
 LAUNDRY SHELF WITH BASE CABINET "VAL" OR LAUNDRY CABINETS "VBK"



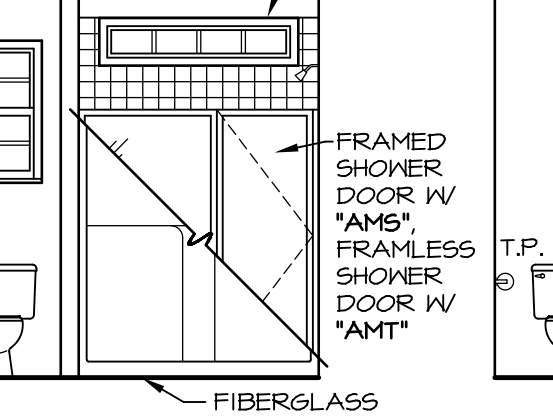
BATH #1
 SCALE: 1/4" = 1'-0"



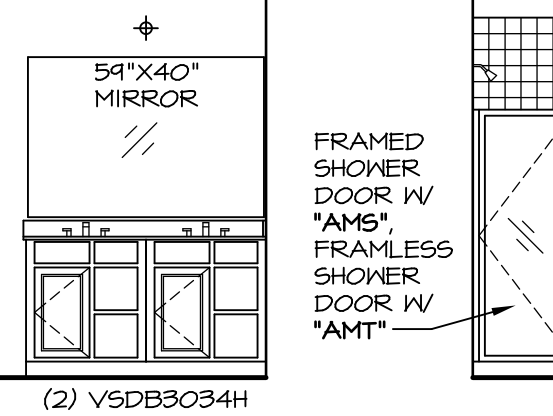
BATH #1
 SCALE: 1/4" = 1'-0"



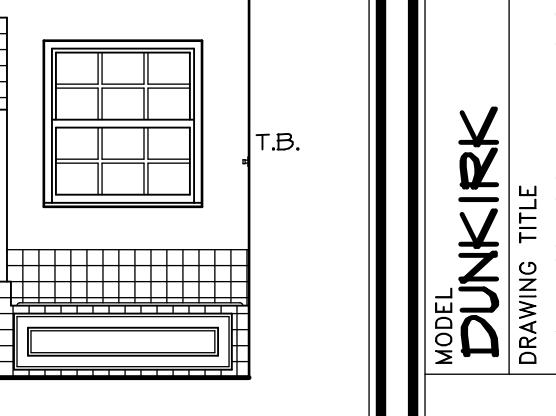
OWNER'S BATH
 SCALE: 1/4" = 1'-0"
 "AMA" OR "AMJ"



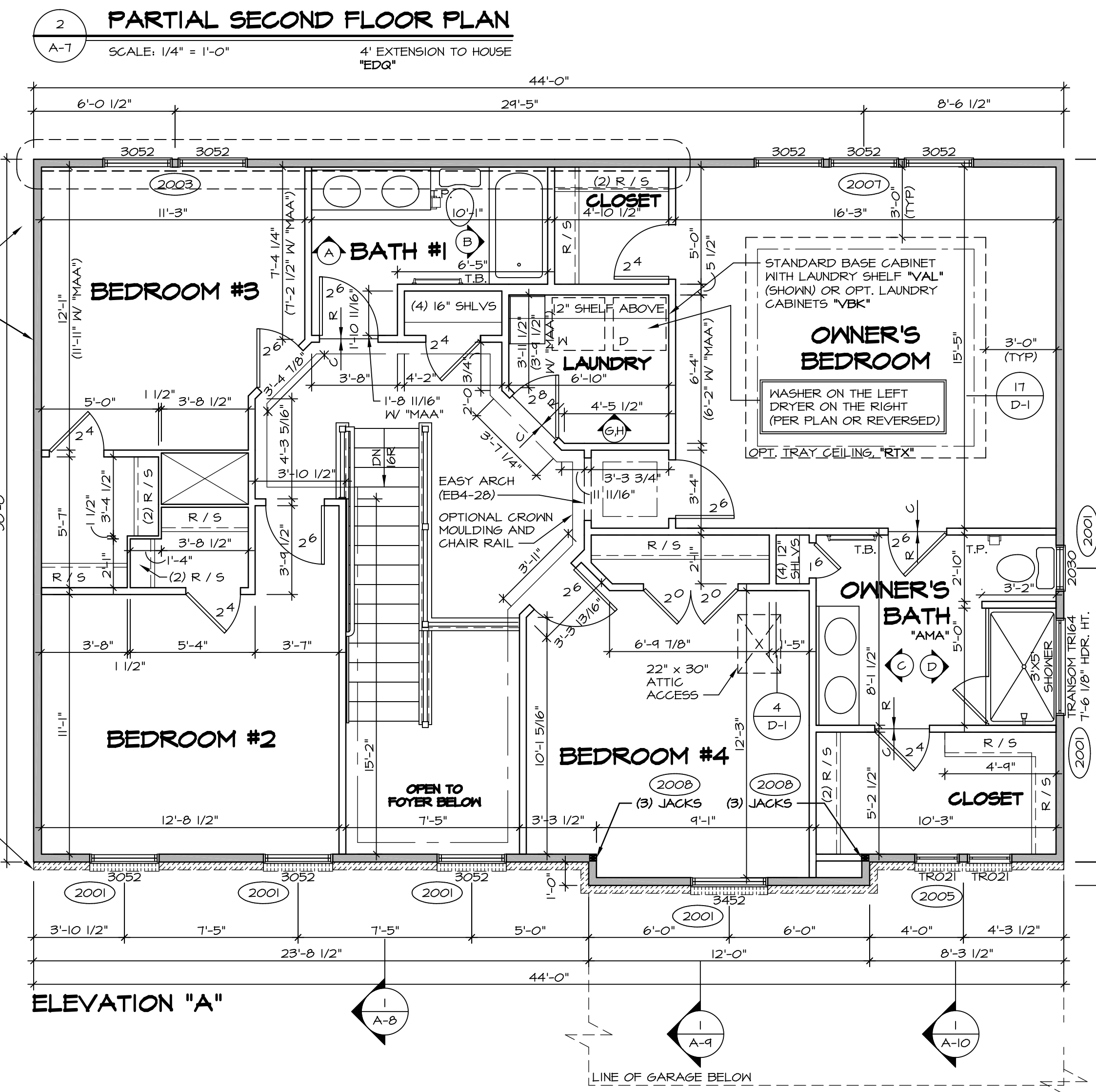
OWNER'S BATH
 SCALE: 1/4" = 1'-0"
 "AMA" OR "AMJ"



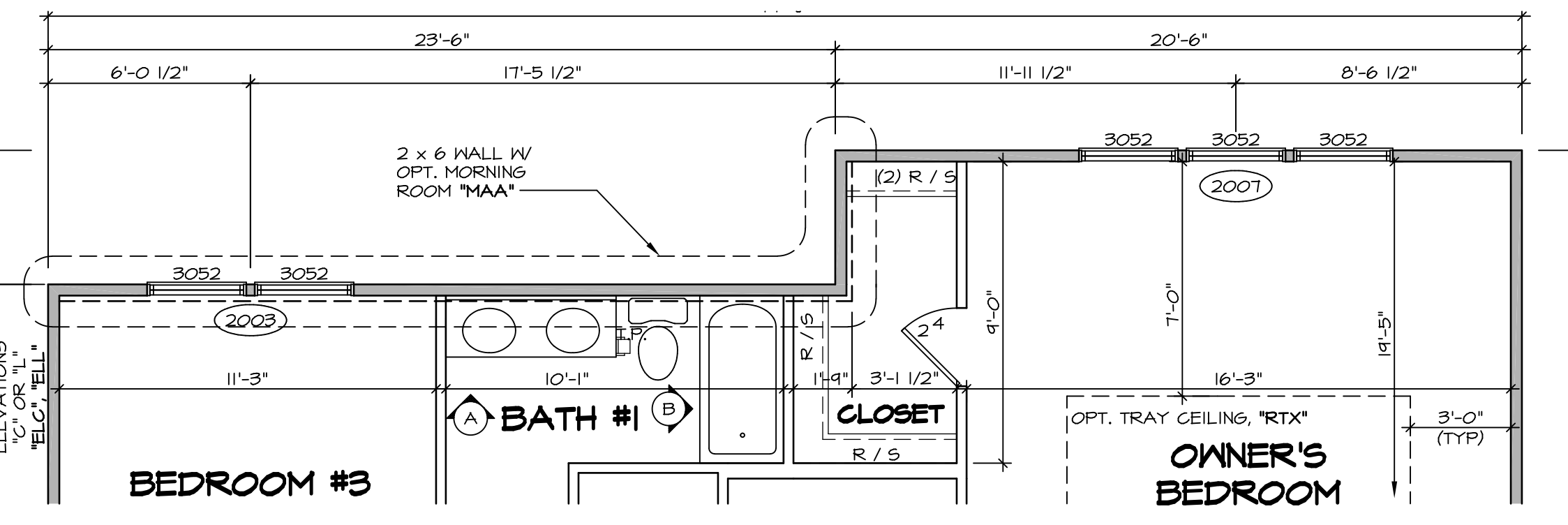
OWNER'S BATH
 SCALE: 1/4" = 1'-0"
 "AME"



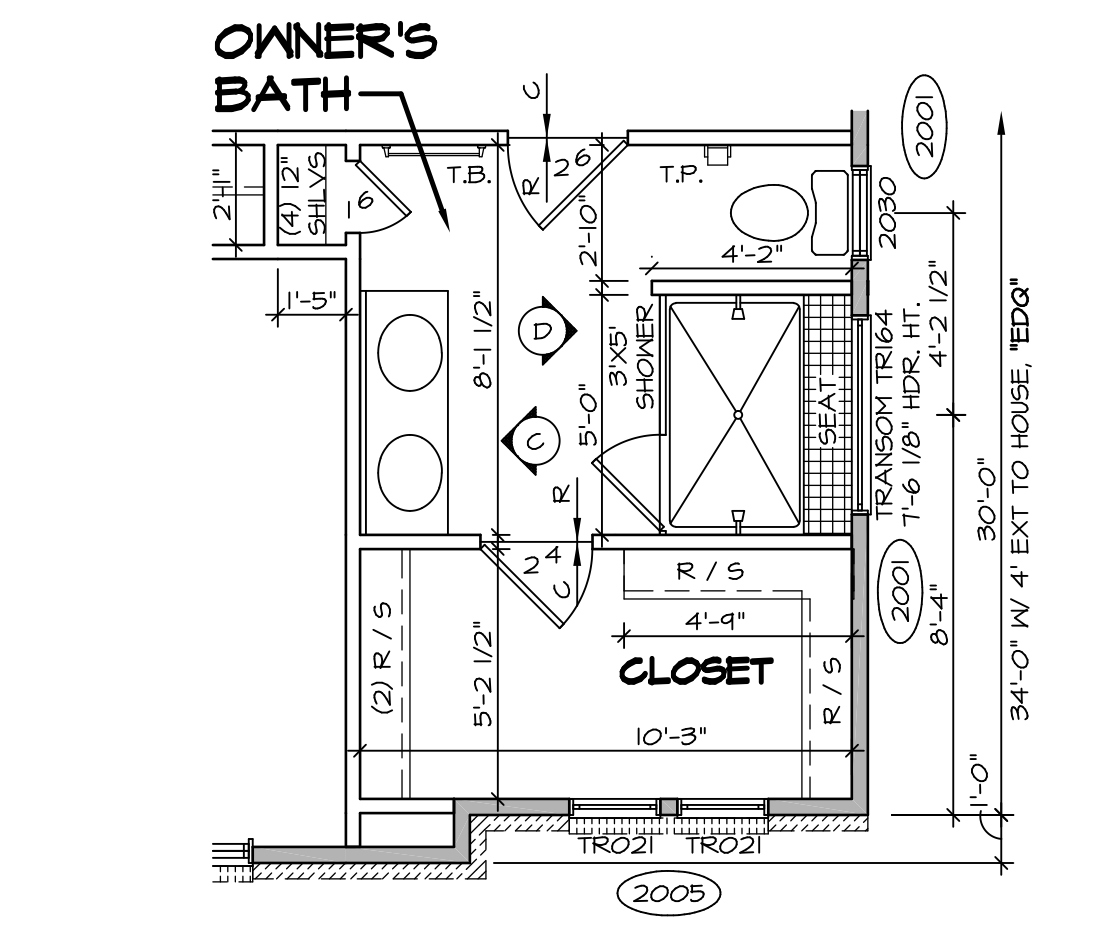
OWNER'S BATH
 SCALE: 1/4" = 1'-0"
 "AME"



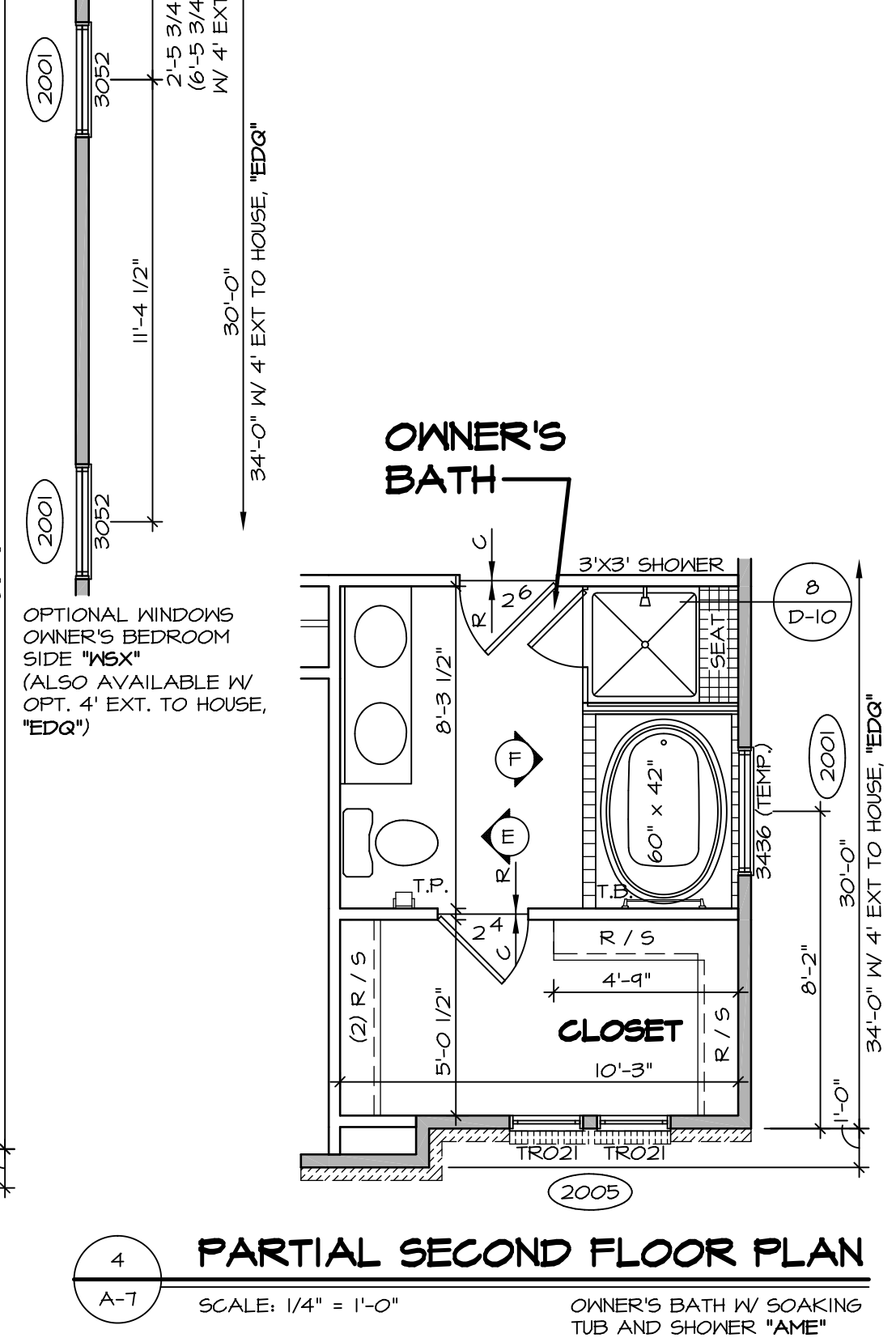
SECOND FLOOR PLAN
 SCALE: 1/4" = 1'-0"
 ELEVATION "A" "ELA"



PARTIAL SECOND FLOOR PLAN
 SCALE: 1/4" = 1'-0"
 4' EXTENSION TO HOUSE "EDG"



PARTIAL SECOND FLOOR PLAN
 SCALE: 1/4" = 1'-0"
 ALT. OWNER'S BATH W/ SHOWER "AMJ"



PARTIAL SECOND FLOOR PLAN
 SCALE: 1/4" = 1'-0"
 OWNER'S BATH W/ SOAKING TUB AND SHOWER "AME"

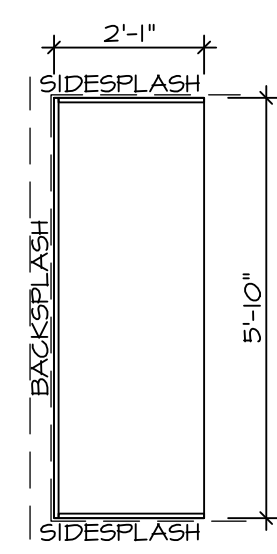
- STRUCTURAL NOTES:**
- BEARING WALL
 - NON BEARING WALL
 - ENGINEERING PAGE NUMBER
1. ALL HEADERS ARE (2) 2x6 W/ 2x4 WALLS OR (3) 2x6 W/ 2x6 WALLS, UNLESS OTHERWISE NOTED.
2. ALL HEADERS TO HAVE (1) 2x4 OR 2x6 JACK EACH END, UNLESS OTHERWISE NOTED.
3. ALL EXTERIOR WALLS TO BE 6" AND ALL INTERIOR WALLS TO BE 3 1/2" UNLESS OTHERWISE NOTED.
4. HATCHED AREAS INDICATE DROPPED CEILINGS.
5. SEE "BRACED WALL PANEL DETAIL SHEET" FOR SPECIAL WALL FRAMING LOCATIONS AND HEADER SIZES, IF APPLICABLE.
6. SEE STANDARD DETAIL SHEET D-1 FOR TRIM OPTIONS (21 / D-1) AND DETAILS.

- BATH NOTES:**
- TEMPERED GLASS SHOWER ENCLOSURE
 - TUB ACCESS PANELS PROVIDED AS NEEDED. ALL MATERIALS BY DIVISION
 - REFER TO SHEET D-10 FOR TUB AND SHOWER DETAILS
 - ALL V5DB34-42 DRAWERS TO BE SET ON RIGHT HAND.

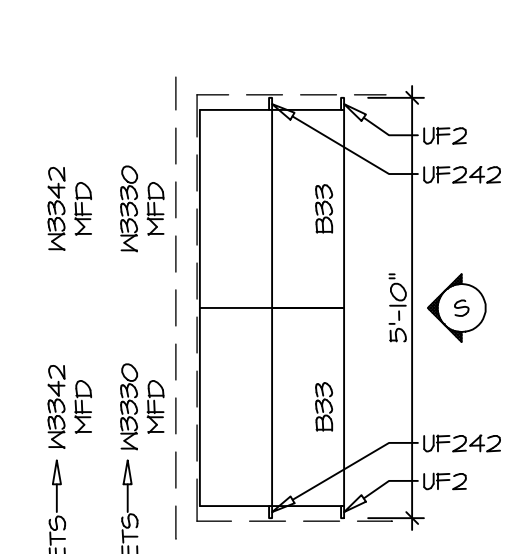
REV. NO.	DATE	REMARKS
10	3/6/16	CLS - ADDED THE END CAP TO LAUNDRY COUNTERTOP SEE DETAIL U/A-T (30239)
3	12/9/13	DCM - AUDIT/MARKETING REVIEW CHANGES
2	1/8/14	DCM - TRIM REVISIONS
5	4/24/14	GEL - FRAXIS TUB CONVERSION
4	5/29/14	REV. RINKON HDR. HT. IN OWNER'S BATH AMA AND AHJ TO T-6 1/8" (PAR ID 24180)
7	10/29/14	CLS - REVISED WALL BEHIND WASHER/DRYER TO 2X6 (PAR ID 28391)
6	10/29/14	ELK - RELOCATED ATIC ACCESS PANEL TO AVOID FAN (PAR28445)
8	11/9/15	DEA - SHOWER DOOR PROJECT I/2
9	12/10/15	DLK - ADDED INT. TRIM DETAIL U/A-T OWNER'S BEDROOM OPT. TRAY CEILING

NVR
 Inc. Services
 Architects
 21 Bye Court, Suite A
 Frederick, MD 21702

SHEET NO.	MODEL	SET NO.	VERSION	DRAWN BY	DATE	OPTION	DRAWING TITLE	DESCRIPTION
A-7	DUNKIRK	DUN00	08	SLK	9/9/13	OPTION	SECOND FLOOR PLAN	OPTION

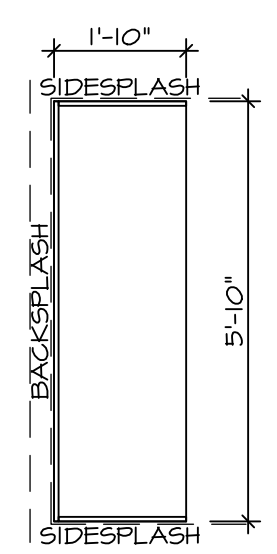


COUNTERTOP PLAN / KT - 3262
SCALE: 3/8" = 1'-0"



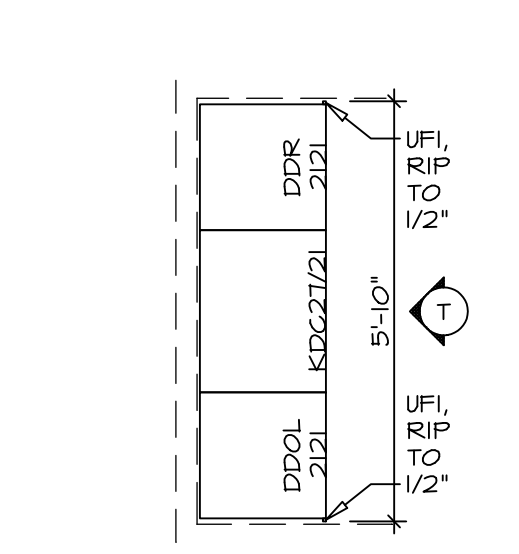
CABINET PLAN / KC - 3262
SCALE: 3/8" = 1'-0"

COUNTERTOP PLAN / KT - 3263
SCALE: 3/8" = 1'-0"

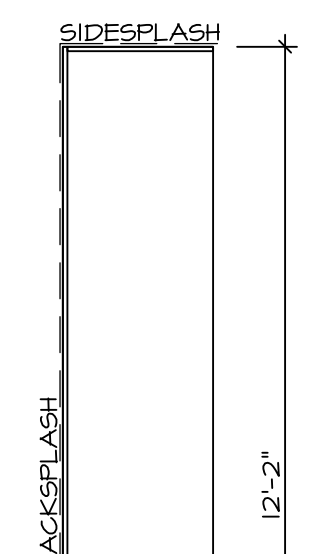


COUNTERTOP PLAN / KT - 3264
SCALE: 3/8" = 1'-0"

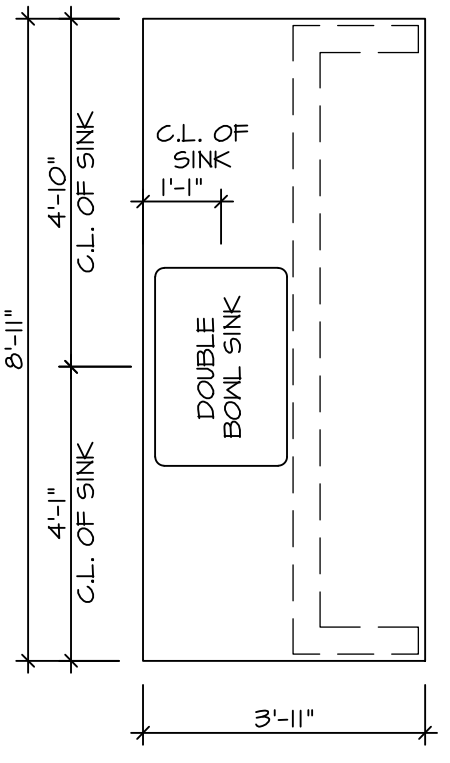
CABINET PLAN / KC - 3263
SCALE: 3/8" = 1'-0"



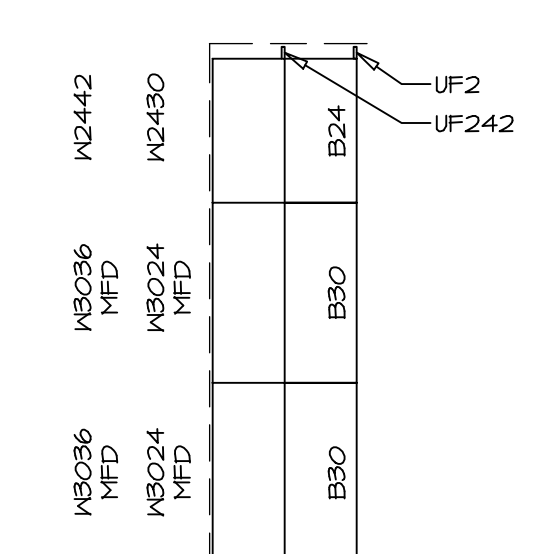
CABINET PLAN / KC - 3264
SCALE: 3/8" = 1'-0"



COUNTERTOP PLAN / KT - 3260
SCALE: 3/8" = 1'-0"

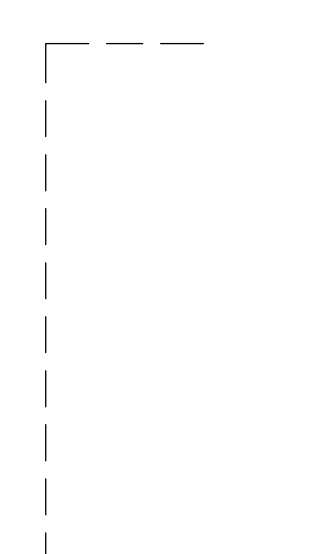


COUNTERTOP PLAN / KT - 3261
SCALE: 3/8" = 1'-0"



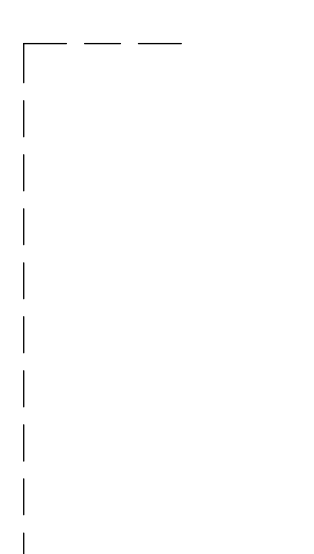
CABINET PLAN / KC - 3260
SCALE: 3/8" = 1'-0"

CABINET PLAN / KC - 3261
SCALE: 3/8" = 1'-0"



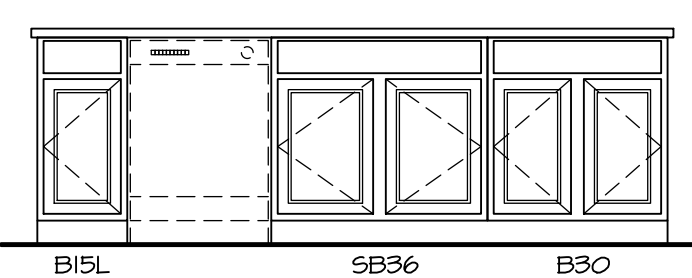
COUNTERTOP PLAN / KT - 3258
SCALE: 3/8" = 1'-0"

COUNTERTOP PLAN / KT - 3259
SCALE: 3/8" = 1'-0"

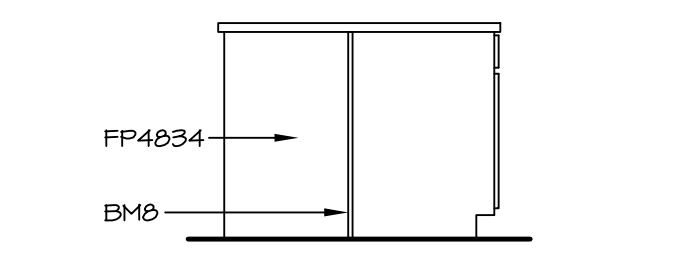


CABINET PLAN / KC - 3258
SCALE: 3/8" = 1'-0"

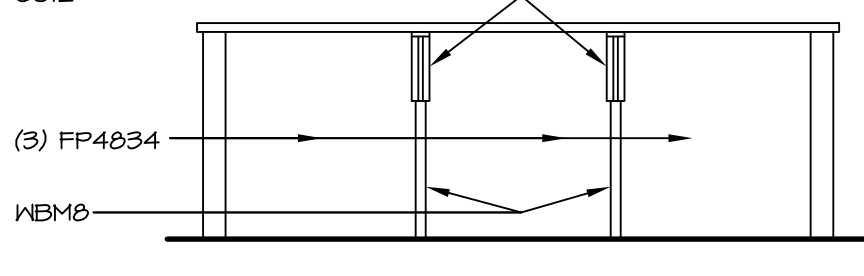
CABINET PLAN / KC - 3259
SCALE: 3/8" = 1'-0"



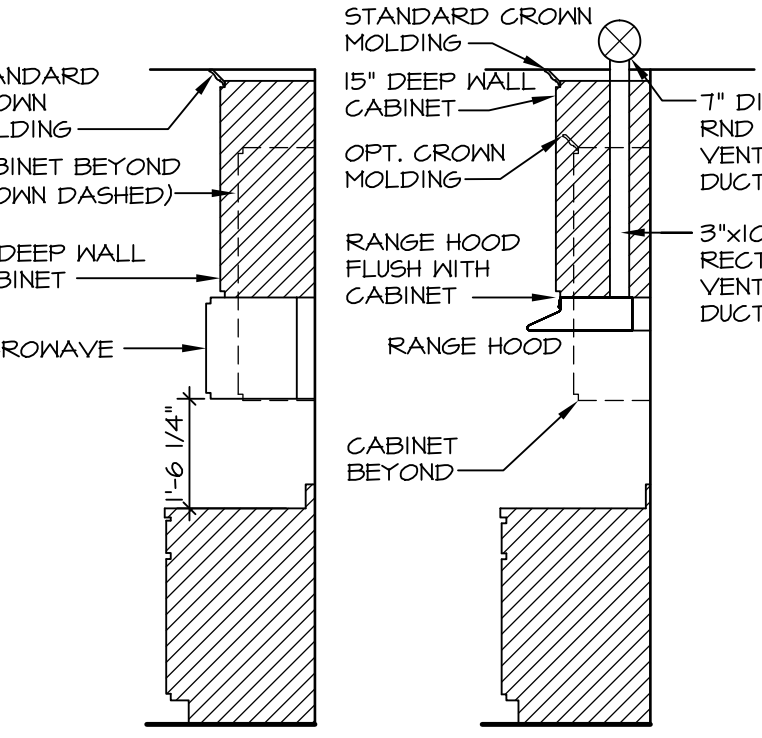
CABINET ELEVATION "J"
SCALE: 3/8" = 1'-0"



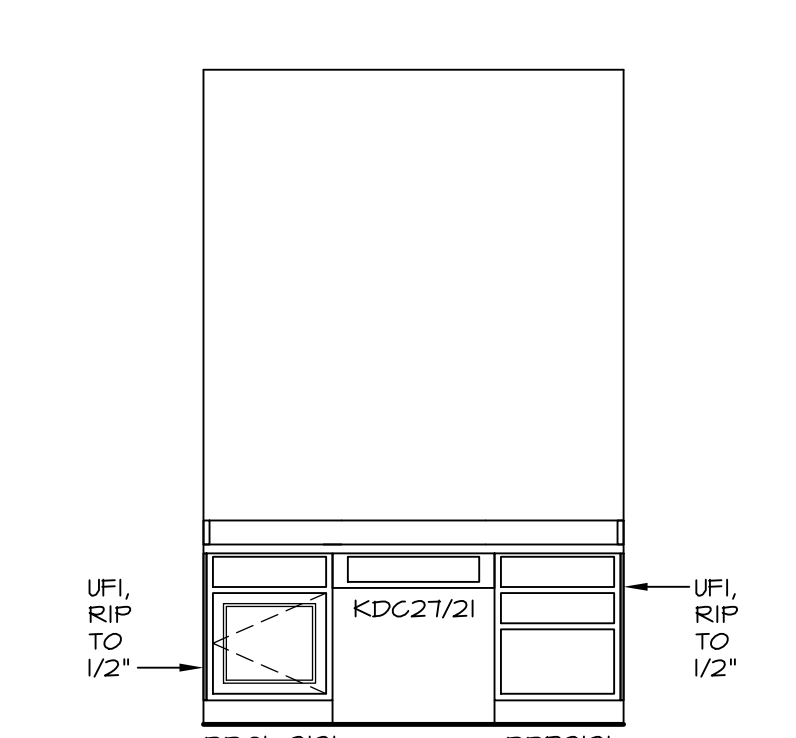
CABINET ELEVATION "L"
SCALE: 3/8" = 1'-0"



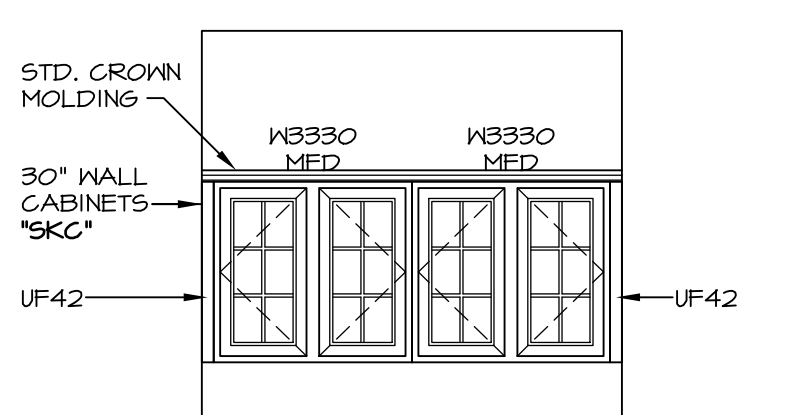
CABINET ELEVATION "K"
SCALE: 3/8" = 1'-0"



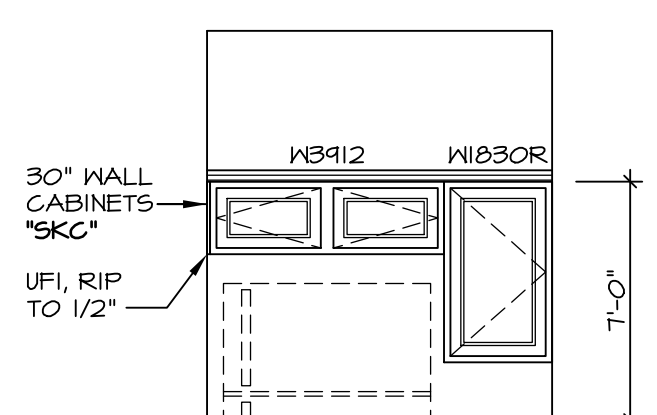
CABINET TRIM DETAIL
SCALE: 3/8" = 1'-0"



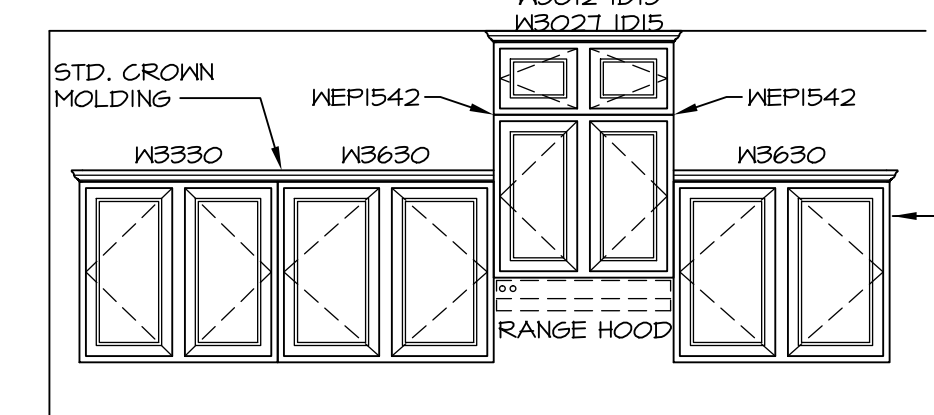
CABINET ELEVATION "T"
SCALE: 3/8" = 1'-0"



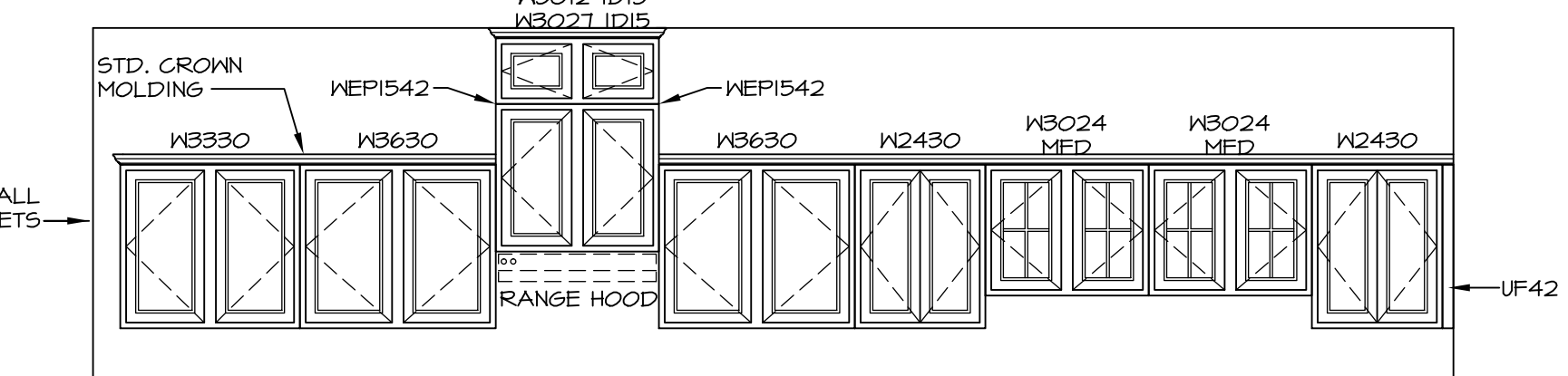
CABINET ELEVATION "S"
SCALE: 3/8" = 1'-0"



CABINET ELEVATION "M"
SCALE: 3/8" = 1'-0"



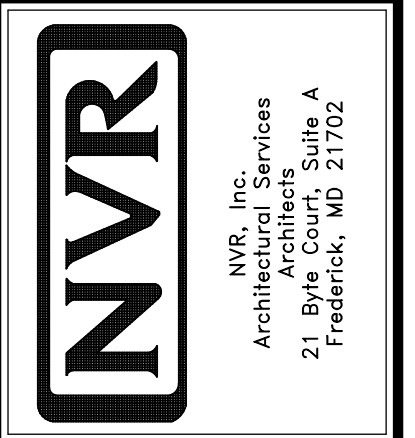
CABINET ELEVATION "N"
SCALE: 3/8" = 1'-0"



CABINET ELEVATION "P"
SCALE: 3/8" = 1'-0"

REV. NO.	DATE	REMARKS
1	11/6/15	BEB - ADDED SINK CUT-OUT AND CENTERLINES
2	2/5/16	JLR - INCREASED CHASE FOR COUNTERTOP OVERHANG (PAR B316/2)

NVR, Inc., owner, expressly reserves its common law copyright and other property rights in these plans. These plans are not to be used, copied, reproduced, or otherwise disseminated without the expressed written consent of NVR, Inc.



SHEET NO.	MODEL	SET NO.	DATE	OPTION
A-12	DUNKIRK	DUN00	6/17/15	KFF, KAA, KDB
27.2	DRAWING TITLE	VERSION 08	DRAWN BY	DATE
	KITCHEN PLANS AND ELEVATIONS		MAA	6/17/15
	MORNING ROOM		KFF, KAA	
	GOURMET ISLAND, STANDARD KITCHEN		KDB	
	ALT. KITCHEN LAYOUT			