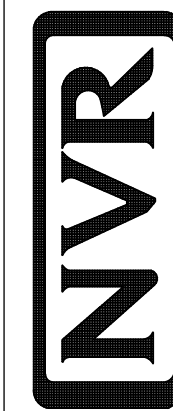


1
A-5 **PLUMBING PLAN**
SCALE: 1/4" = 1'-0"

SHEET NO. **A-5**
MODEL **PALERMO**
DRAWING TITLE **PLUMBING PLAN**
OPTION DESCRIPTION
48

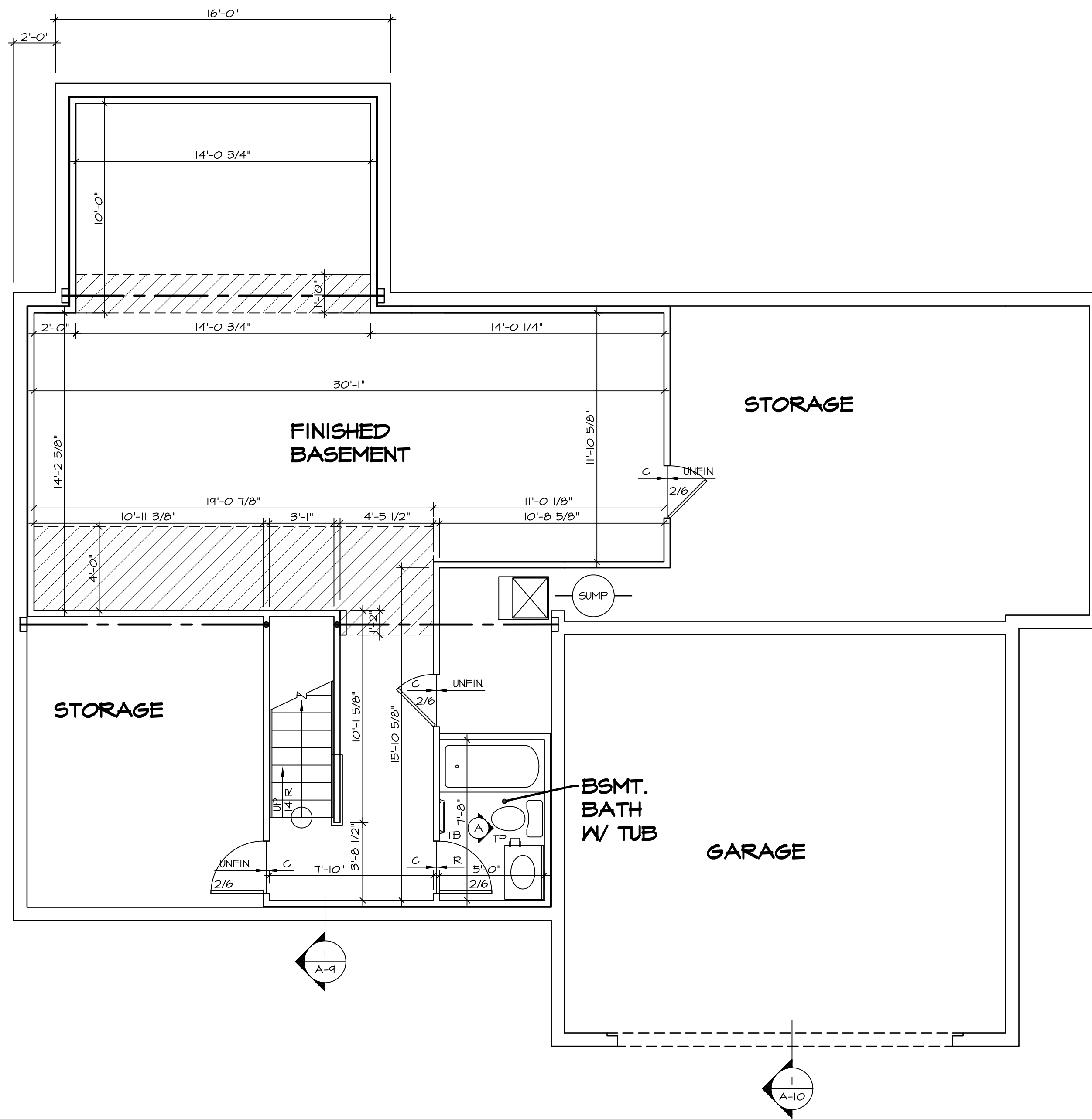
SET NO. **PAL00**
VERSION **03**
DRAWN BY
DATE:
OPTION



NVR, Inc.
Architectural Services
5285 Westpark Drive, Suite 100
Frederick, MD 21703

NVR, Inc., owner, expressly reserves its copyright in these plans. These plans are not to be reproduced, changed, adapted, or otherwise used in any way without the written consent of NVR, Inc.

REV. NO. | DATE | REMARKS



LEGEND

| | |
|--|---|
| | BEARING WALL |
| | NON BEARING WALL |
| | INDICATES BEARING FROM POINT-LOAD ABOVE |
| | JACKS |
| | BEAM/HEADER |
| | PAD FOOTING |
| | STEEL COLUMN |
| | PORTAL FRAME |
| | JOIST/TRUSS |
| | LVL |
| | ENGINEERING PAGE NUMBER |

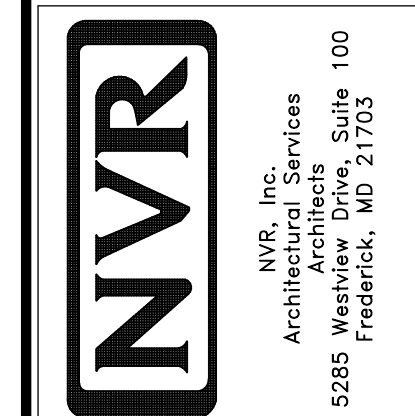
SEE FC DETAILS FOR FRAMING CONNECTORS

- FLOOR PLAN NOTES**
1. ALL HEADERS ARE (2) 2x6 w/ 2x4 WALLS OR (3) 2x6 w/ 2x6 WALLS, UNLESS OTHERWISE NOTED.
 2. ALL HEADERS TO HAVE (1) 2x4 OR 2x6 JACK EACH END, UNLESS OTHERWISE NOTED.
 3. ALL EXTERIOR WALLS TO BE 4" AND ALL INTERIOR WALLS TO BE 3 1/2", UNLESS OTHERWISE NOTED.
 4. HATCHED AREAS INDICATE DROPPED CEILINGS. ALL DROPPED CEILINGS ARE 12" UNLESS OTHERWISE NOTED.
 5. SEE "BRACED WALL PANEL DETAIL SHEET" FOR SPECIAL WALL FRAMING LOCATIONS AND HEADER SIZES, IF APPLICABLE.
 6. SEE STANDARD DETAIL CATEGORY "IT" SHEET(S) FOR INTERIOR TRIM DETAILS.
 7. SEE ARCHITECTURAL DETAIL SHEET "AD" FOR HOUSE SPECIFIC INTERIOR TRIM OPTION TABLE.
 8. ALL WINDOWS HAVE 7'-0" 1/2" HEADER HEIGHT UNLESS OTHERWISE NOTED.
 9. ALL CASED OPENINGS AT T-11", UNLESS OTHERWISE NOTED.

- GYPSUM NOTES**
- AT GARAGE:
GYPSUM BOARD AT COMMON WALLS, CEILING, BEAM WRAPS AND SUPPORTS PER STANDARD DETAIL FA-1(b) FIRE ASSEMBLIES OR AS REQUIRED BY LOCAL CODE.
- AT STAIRS:
1/2" GYPSUM BOARD AT UNDERSIDE OF STAIRS AND WALLS IN CLOSET

| REV. NO. | DATE | REMARKS |
|----------|----------|------------------------|
| 1 | 08/05/16 | TH - DRAWING ALIGNMENT |

NVR, Inc., owner, expressly reserves its common law copyright in these plans. These plans are not to be reproduced, changed, copied in any way, or otherwise used without the prior written consent of NVR, Inc.



| | | | | | | |
|--------------------------------------|---------|---------|---------|----------|-------|--------|
| SHEET NO. | MODEL | SET NO. | VERSION | DRAWN BY | DATE: | OPTION |
| A-6 | PALERMO | 03 | 03 | | | |
| 51 | | | | | | |
| DRAWING TITLE BASEMENT FLOOR PLAN | | | | | | |
| OPTION DESCRIPTION | | | | | | |

BASEMENT FLOOR PLAN
SCALE: 1/4" = 1'-0"

| FIRST FLOOR JACK SCHEDULE | | | | |
|---------------------------|-------------------------------|---------|------------|-----------------|
| IDENTIFIER | DESCRIPTION | OPTIONS | ENG. NUM. | REMARKS |
| J106 | JACK - (2) 2X4 SFF STUD GRADE | | 1012 | |
| J107 | JACK - (2) 2X4 SFF STUD GRADE | | 1012 | |
| J108 | JACK - (2) 2X4 SFF STUD GRADE | | 1012 | |
| J114 | JACK - (2) 2X4 SFF STUD GRADE | EDQMAP | 1075, 1078 | |
| J120 | JACK - (4) 2X6 SFF STUD GRADE | MAA | 1019 | |
| J121 | JACK - (3) 2X6 SFF STUD GRADE | MAA | 1019 | FIELD INSTALLED |
| J122 | JACK - (3) 2X4 SFF STUD GRADE | SRH | 1040 | |
| J124 | JACK - (3) 2X4 SFF STUD GRADE | ELD | 1021 | |
| J150 | JACK - (3) 2X4 SFF STUD GRADE | GCF | 1044 | |
| J151 | JACK - (3) 2X4 SFF STUD GRADE | GCF | 1044 | |
| J154 | JACK - (2) 2X4 SFF STUD GRADE | GCF | 1122 | |
| J155 | JACK - (2) 2X4 SFF STUD GRADE | GCF | 1122 | |
| J167 | JACK - (2) 2X4 SFF STUD GRADE | LGG | 1082 | |
| J168 | JACK - (2) 2X4 SFF STUD GRADE | LGG | 1082 | |
| J169 | JACK - (3) 2X4 SFF STUD GRADE | ELD | | |

LVL PLY TO PLY FASTENING SCHEDULE:

1A - (2) FLY UP TO AND INCLUDING 11 7/8" TALL; FASTEN FLIES W/ (2) ROWS 16D NAILS AT 12" O.C.
 2A - (2) FLY 14" TO AND INCLUDING 18" TALL (INCLUSIVE); FASTEN FLIES W/ (3) ROWS 16D NAILS AT 12" O.C.
 3A - (2) FLY 20" TALL AND OVER; FASTEN FLIES W/ (4) ROWS 16D NAILS AT 12" O.C.
 4A - (3) FLY UP TO AND INCLUDING 11 7/8" TALL; FASTEN FLIES W/ (2) ROWS 16D NAILS AT 12" O.C. FROM EACH SIDE
 5A - (3) FLY 14" TO AND INCLUDING 18" TALL (INCLUSIVE); FASTEN FLIES W/ (3) ROWS 16D NAILS AT 12" O.C. FROM EACH SIDE
 6A - (3) FLY 20" TALL AND OVER; FASTEN FLIES W/ (4) ROWS 16D NAILS AT 12" O.C. FROM EACH SIDE

| FIRST FLOOR BEAM/HEADER SCHEDULE | | | | | |
|----------------------------------|---------------------------|------------|---------|------------|----------------------|
| IDENTIFIER | DESCRIPTION | LENGTH | OPTIONS | ENG. NUM. | REMARKS |
| LVL-3 | LVL - 16 | 14'-4 1/2" | MAA | 1019 | 5A, FIELD INSTALL |
| BIO6-2 | LVL - 16 | 17'-4" | ZSU | 1044 | 2A, FIELD INSTALL |
| PF104-2 | EXT HEADER - 2X12 - 2 PLY | 11'-4" | GCF | 1054, 1148 | 2-PLY, FIELD INSTALL |

| LEGEND | |
|--------|---|
| | BEARING WALL |
| | NON BEARING WALL |
| | INDICATES BEARING FROM POINT-LOAD ABOVE |
| | JACKS |
| | BEAM/HEADER |
| | PAD FOOTING |
| | STEEL COLUMN |
| | PORTAL FRAME |
| | JOIST/TRUSS |
| | LVL |
| | ENGINEERING PAGE NUMBER |

| STEEL COLUMN SCHEDULE | | | | | |
|-----------------------|-------|--------|---------|-----------|---------|
| IDENTIFIER | STYLE | HEIGHT | OPTIONS | ENG. NUM. | REMARKS |
| | | | | | |

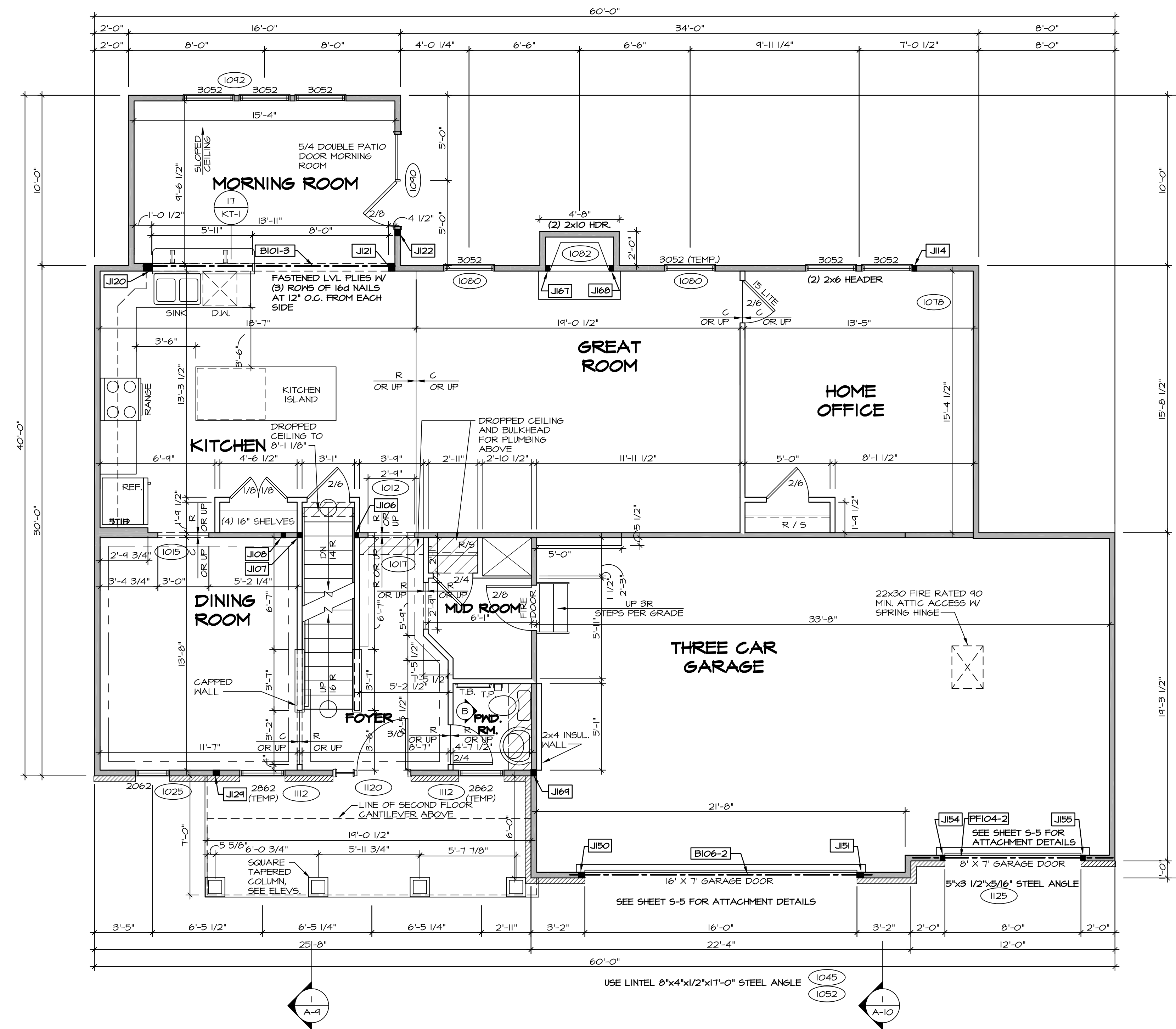
FLOOR PLAN NOTES

- ALL HEADERS ARE (2) 2x6 W/ 2x4 WALLS OR (3) 2x6 W/ 2x6 WALLS, UNLESS OTHERWISE NOTED.
- ALL HEADERS TO HAVE (1) 2x4 OR 2x6 JACK AND KING STUD EACH END, UNLESS OTHERWISE NOTED.
- ALL EXTERIOR WALLS TO BE 4" W/ OSB OR 3 1/2" W/ T-PLY, ALL INTERIOR WALLS TO BE 3 1/2", UNLESS OTHERWISE NOTED.
- HATCHED AREAS INDICATE DROPPED CEILINGS. ALL DROPPED CEILINGS ARE 12" UNLESS OTHERWISE NOTED.
- SEE "BRACED WALL PANEL DETAIL SHEET" FOR SPECIAL WALL FRAMING LOCATIONS AND HEADER SIZES, IF APPLICABLE.
- SEE STANDARD DETAIL CATEGORY "I1" SHEET(S) FOR INTERIOR TRIM DETAILS.
- SEE ARCHITECTURAL DETAIL SHEET "AD" FOR HOUSE SPECIFIC INTERIOR TRIM OPTION TABLE.
- ALL WINDOWS HAVE 7'-0" 1/2" HEADER HEIGHT UNLESS OTHERWISE NOTED.
- ALL HEADERS IN NON-BEARING WALLS SHALL BE A SINGLE FLAT 2X4 OR 2X6 ATTACHED TO GRIPPLES ABOVE, UNLESS OTHERWISE NOTED.

GYPSUM NOTES

AT GARAGE:
 GYPSUM BOARD AT COMMON WALLS, CEILING, BEAM WRAPS AND SUPPORTS PER STANDARD DETAIL FA-10) FIRE ASSEMBLIES OR AS REQUIRED BY LOCAL CODE.

AT STAIRS:
 1/2" GYPSUM BOARD AT UNDERSIDE OF STAIRS AND WALLS IN CLOSET



FIRST FLOOR PLAN
 SCALE: 1/4" = 1'-0"

| REV. NO. | DATE | DESCRIPTION |
|----------|----------|--------------------------------|
| 1 | 08/04/16 | TH - DRAWING ALIGNMENT |
| 2 | 07/12/17 | SL5 - T-PLY CONVERSION PROJECT |

| | |
|---------------|------------|
| SET NO. PALOO | VERSION 03 |
| DRAWN BY | |
| DATE: | OPTION |

PALERMO
 DRAWING TITLE
 FIRST FLOOR PLAN

OPTION DESCRIPTION

A-7

53

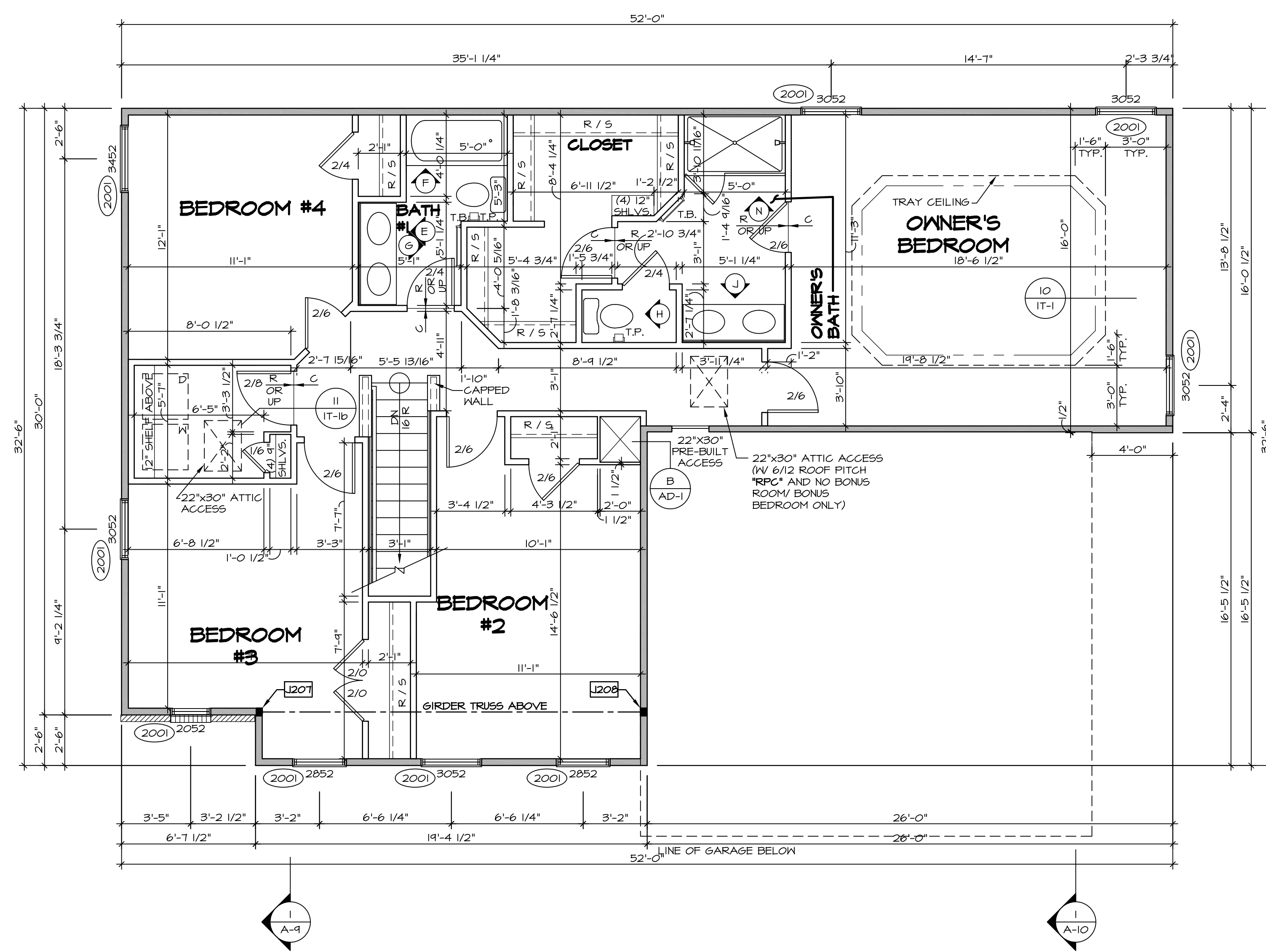
NVR
 NVR, Inc.
 Architectural Services
 5285 Washburn Circle
 Frederick, MD 21703

C:\NVR\Solves\PALERM0_PALOO_03\DC1-V6-K454_678073\Sheets\101-Specific\53 A-7 PLAN_L5.dwg 02/13/18 - 3:37 pm

| SECOND FLOOR JACK SCHEDULE | | | | |
|----------------------------|---------------------|---------|-----------|--------------------------------|
| IDENTIFIER | DESCRIPTION | OPTIONS | ENG. NUM. | REMARKS |
| J207 | JACK - (3) 2x4 SP#1 | ELD | 2011 | EXTEND JACKS THROUGH TOP PLATE |
| J208 | JACK - (3) 2x4 SP#1 | ELD | 2011 | EXTEND JACKS THROUGH TOP PLATE |

| LEGEND | |
|--------|---|
| | BEARING WALL |
| | NON BEARING WALL |
| | INDICATES BEARING FROM POINT-LOAD ABOVE |
| | JACKS |
| | BEAM/HEADER |
| | PAD FOOTING |
| | STEEL COLUMN |
| | PORTAL FRAME |
| | JOIST/TRUSS |
| | LVL |
| | ENGINEERING PAGE NUMBER |

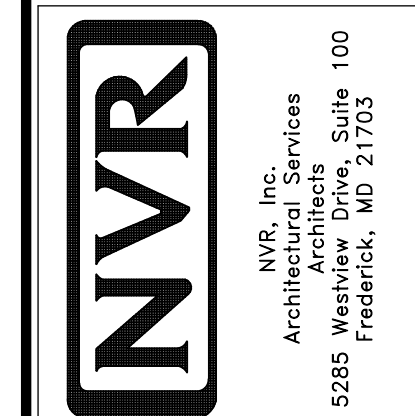
- FLOOR PLAN NOTES**
- ALL HEADERS ARE (2) 2x6 w/ 2x4 WALLS OR (3) 2x6 w/ 2x6 WALLS, UNLESS OTHERWISE NOTED.
 - ALL HEADERS TO HAVE (1) 2x4 OR 2x6 JACK AND KING STUD EACH END, UNLESS OTHERWISE NOTED.
 - ALL EXTERIOR WALLS TO BE 4" w/ OSB OR 3 1/2" w/ T-PLY, ALL INTERIOR WALLS TO BE 3 1/2", UNLESS OTHERWISE NOTED.
 - HATCHED AREAS INDICATE DROPPED CEILINGS. ALL DROPPED CEILINGS ARE 12' UNLESS OTHERWISE NOTED.
 - SEE "BRACED WALL PANEL DETAIL SHEET" FOR SPECIAL WALL FRAMING LOCATIONS AND HEADER SIZES, IF APPLICABLE.
 - SEE STANDARD DETAIL CATEGORY "1T" SHEET(S) FOR INTERIOR TRIM DETAILS.
 - SEE ARCHITECTURAL DETAIL SHEET "AD" FOR HOUSE SPECIFIC INTERIOR TRIM OPTION TABLE.
 - ALL WINDOWS HAVE 7'-0 1/2" HEADER HEIGHT UNLESS OTHERWISE NOTED.
 - ALL HEADERS IN NON-BEARING WALLS SHALL BE A SINGLE FLAT 2x4 OR 2x6 ATTACHED TO GRIPPLES ABOVE, UNLESS OTHERWISE NOTED.



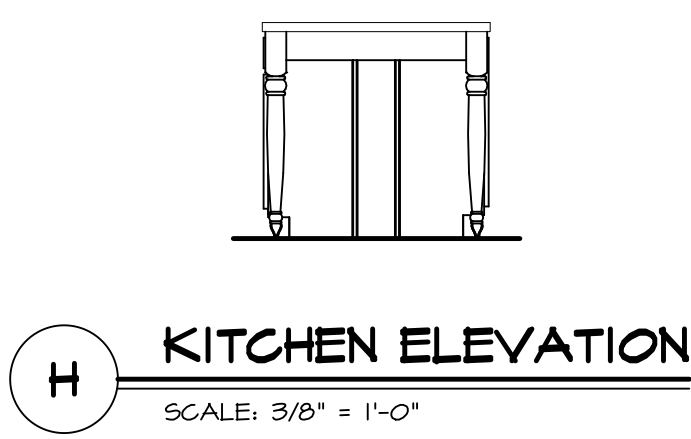
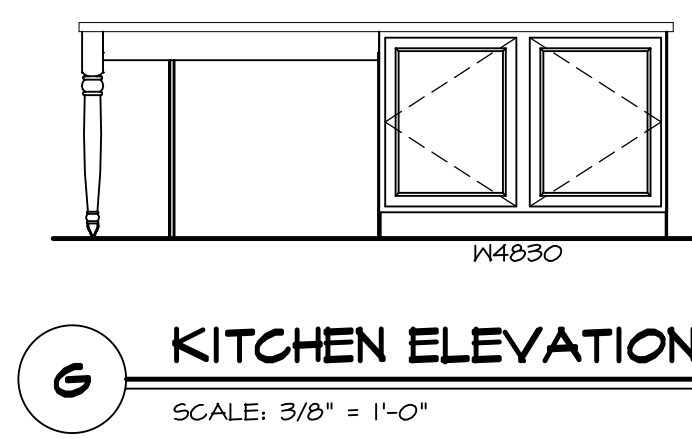
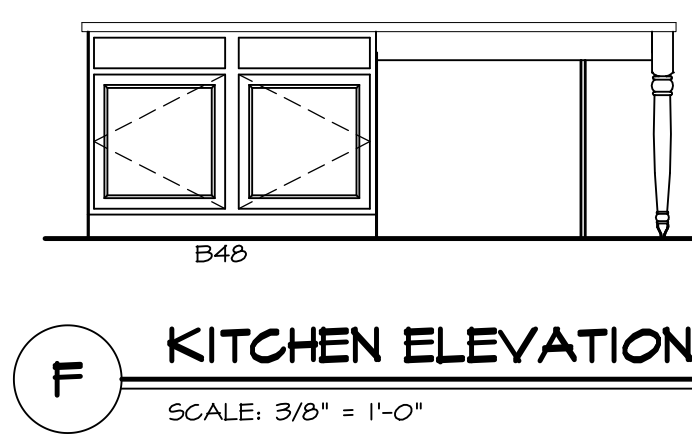
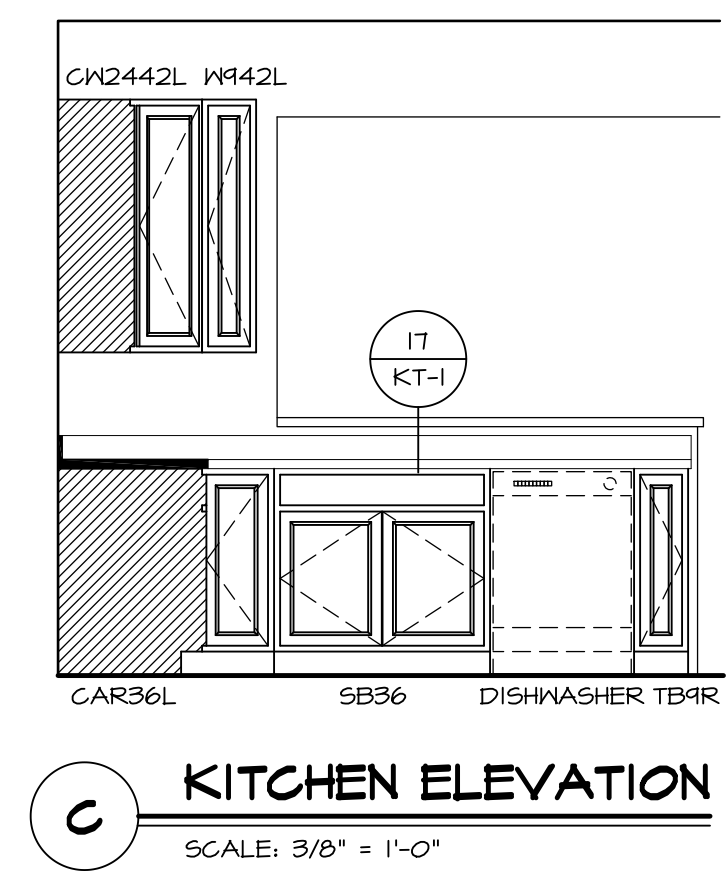
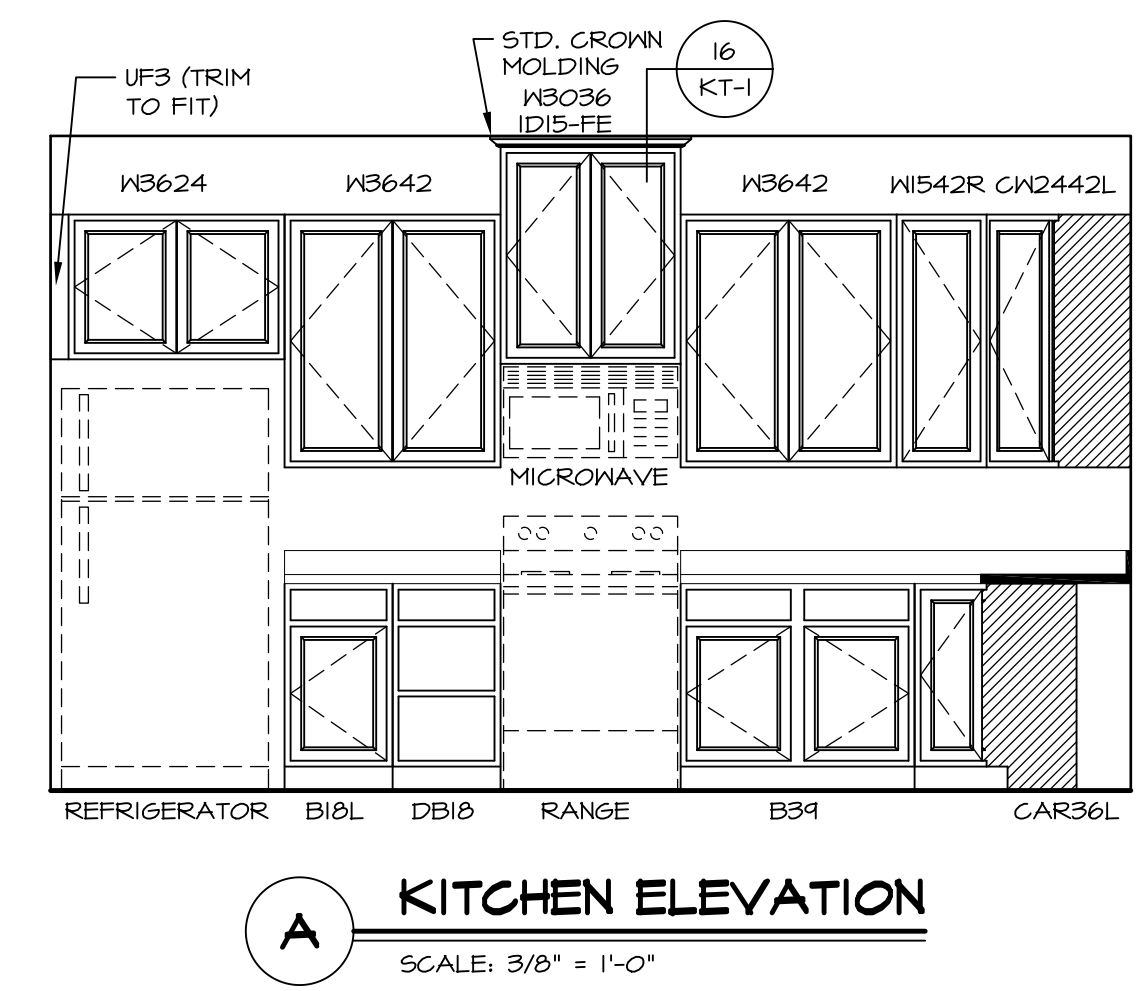
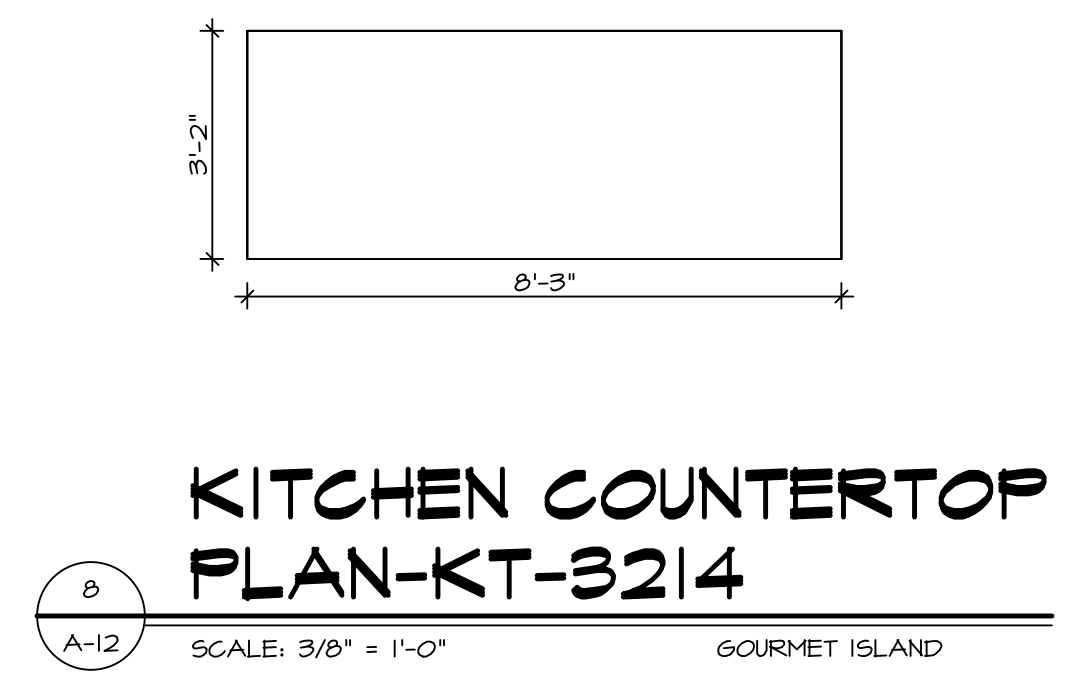
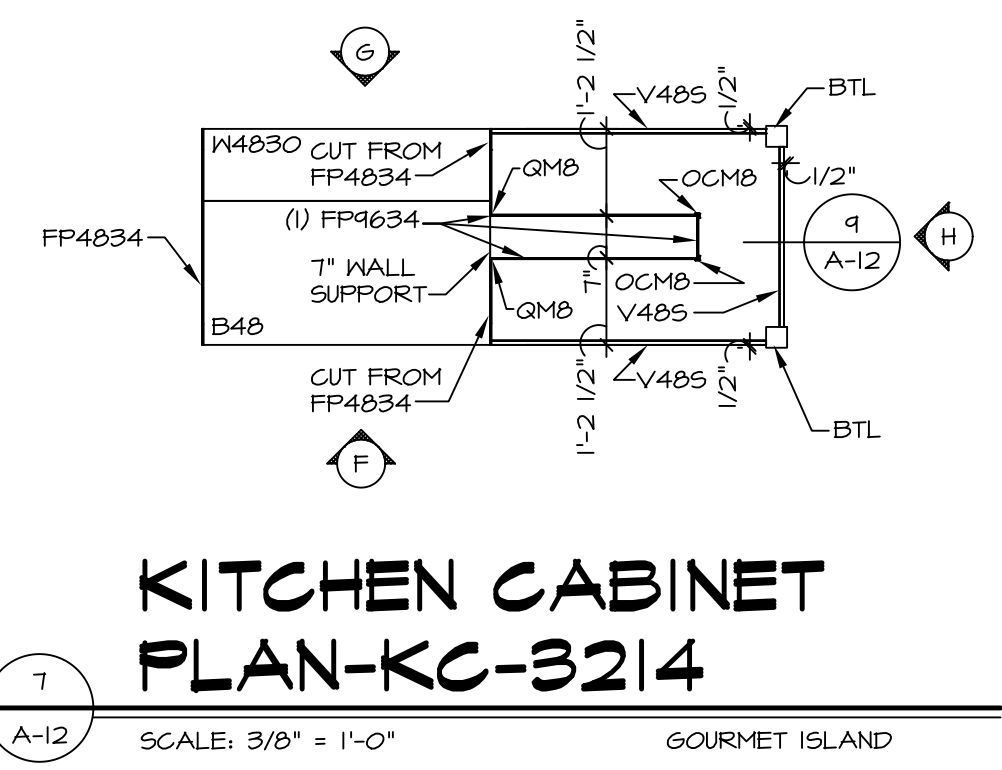
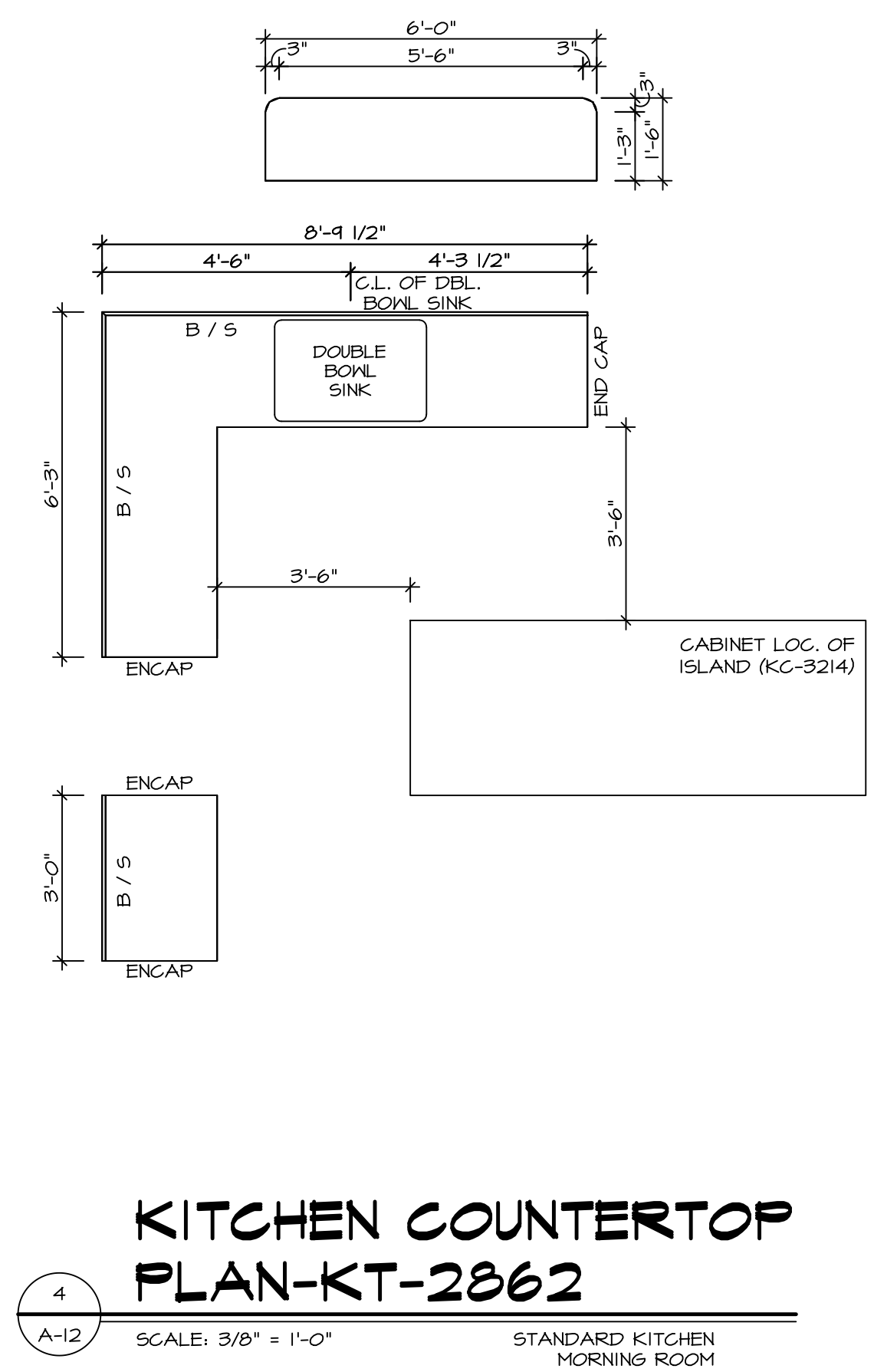
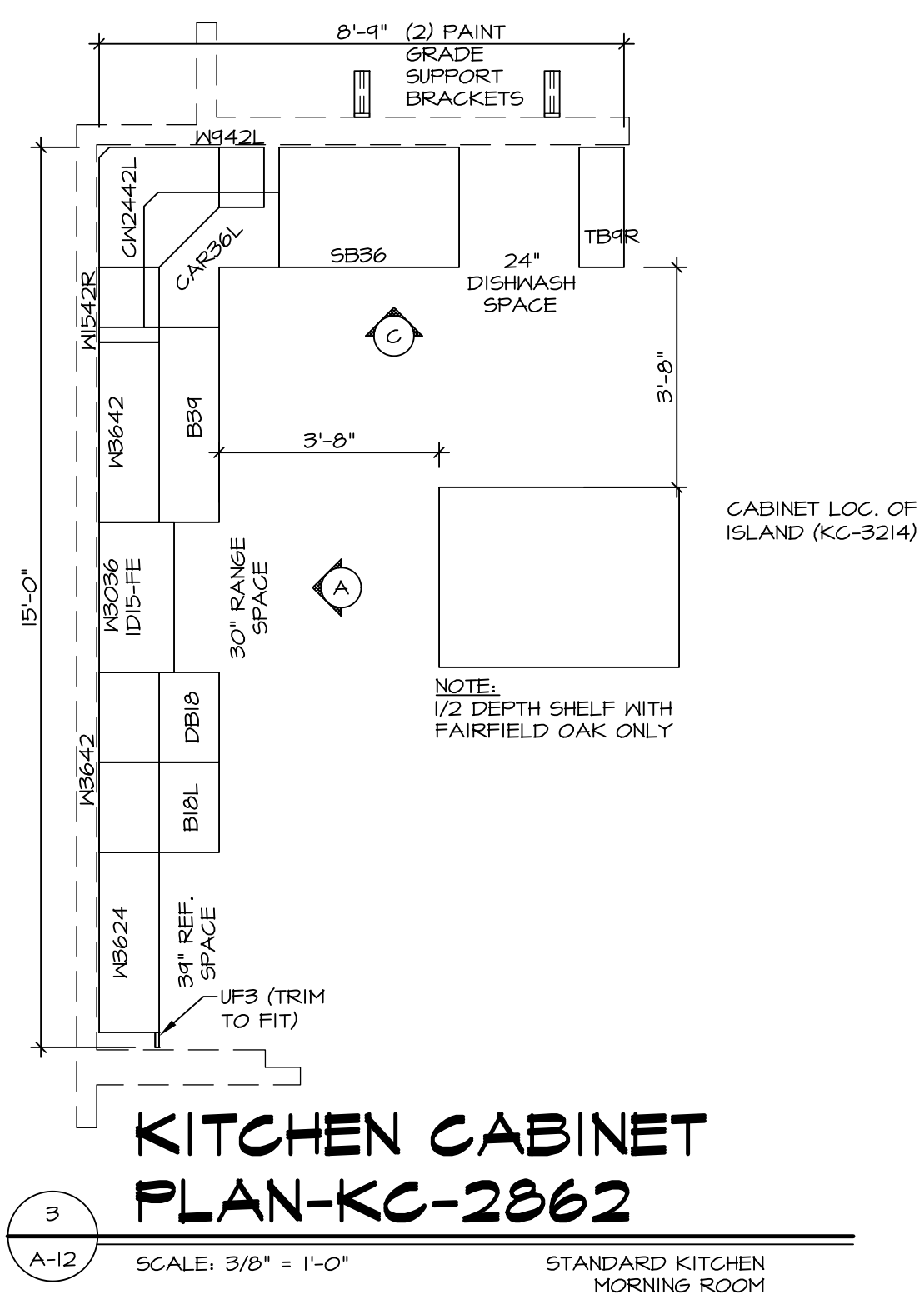
SECOND FLOOR PLAN
SCALE: 1/4" = 1'-0"

| REV. NO. | DATE | REMARKS |
|----------|----------|--------------------------------|
| 1 | 08/04/18 | TH - DRAWING ALIGNMENT |
| 2 | 07/27/18 | SLS - T-PLY CONVERSION PROJECT |

NVR, Inc., owner, expressly reserves its copyright in these plans. These plans are not to be reproduced, changed, copied, or otherwise used in any way without the written consent of NVR, Inc.

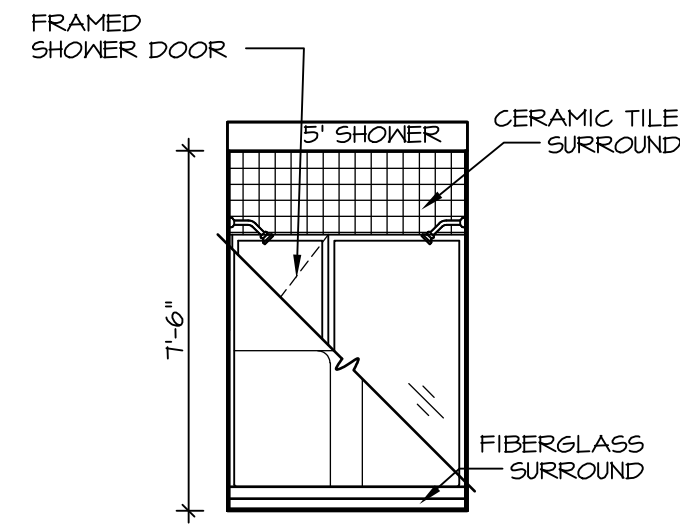


| SHEET NO. | MODEL | SET NO. | VERSION | DRAWN BY | DATE: | OPTION |
|-----------|---------|----------|---------|----------|-------|--------|
| A-8 | PALERMO | PALOO_03 | 03 | | | |
| 60 | | | | | | |

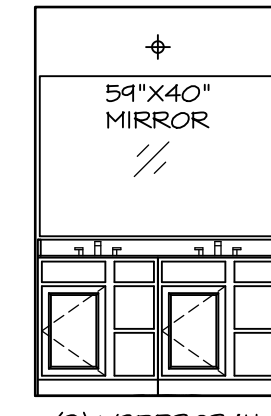


| | | | |
|---|---|--|---|
| SHEET NO. A-12 | MODEL PALERMO DRAWING TITLE OPTION DESCRIPTION | SET NO. PALOO VERSION 03 DRAWN BY DATE: OPTION | REV. NO. DATE REMARKS |
| NVR, Inc. is the owner, copyright holder, and sole proprietor of these plans. These plans are not to be reproduced, changed, adapted, or used in any way without the written consent of NVR, Inc. | | | NVR, Inc. is the owner, copyright holder, and sole proprietor of these plans. These plans are not to be reproduced, changed, adapted, or used in any way without the written consent of NVR, Inc. |
| PALERMO Architectural Services 5285 West... Suite 100 Frederick, MD 21703 | | | |
| 10 | | | |

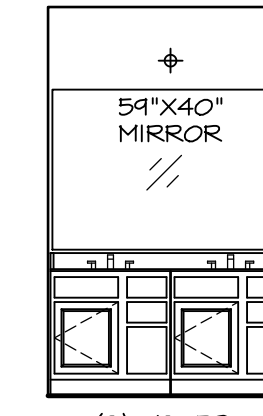
C:\NVR\Solves\PALERMO_PALOO_03\DCY-VG-K452\878073\Sheets\10 A-12_KIT_LS.dwg 02/13/18 - 3:37 am



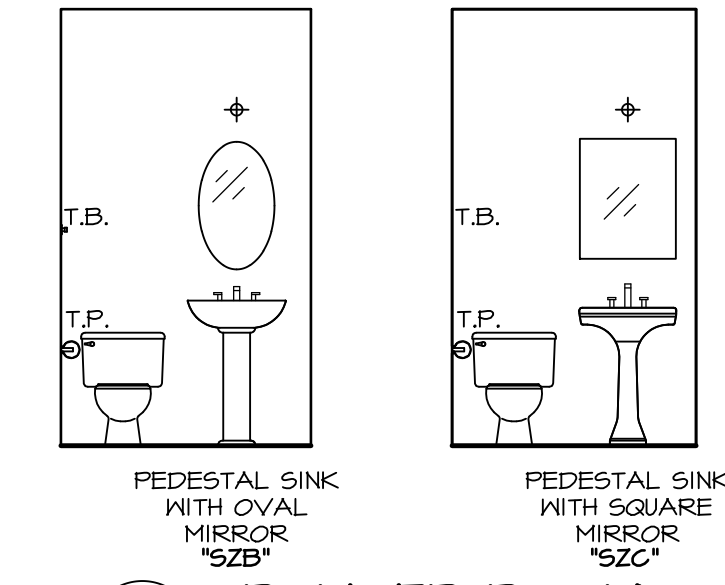
N OWNER'S BATH
SCALE: 1/4" = 1'-0"



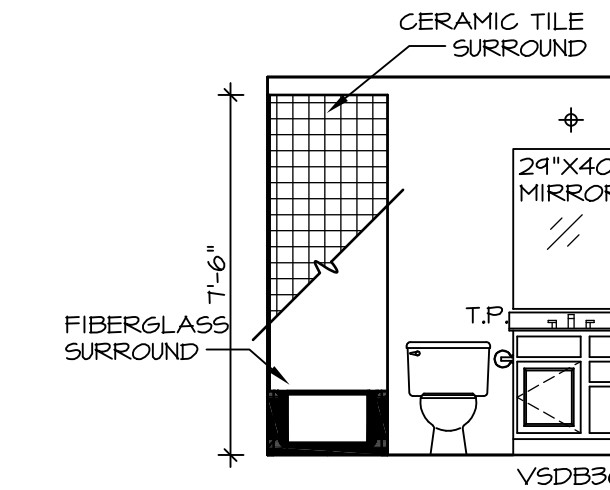
J OWNER'S BATH
SCALE: 1/4" = 1'-0"



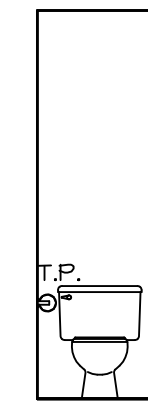
E BATH #1
SCALE: 1/4" = 1'-0"



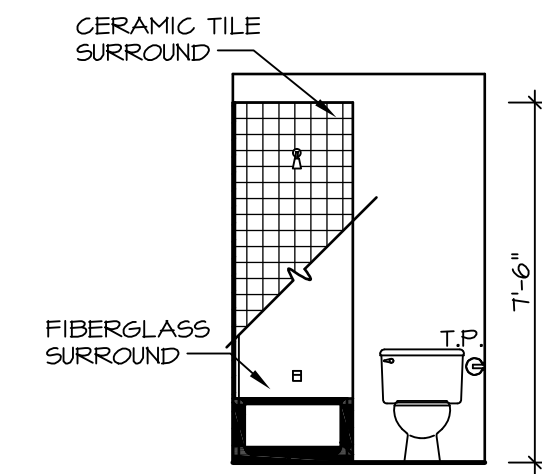
B POWDER ROOM
SCALE: 1/4" = 1'-0"



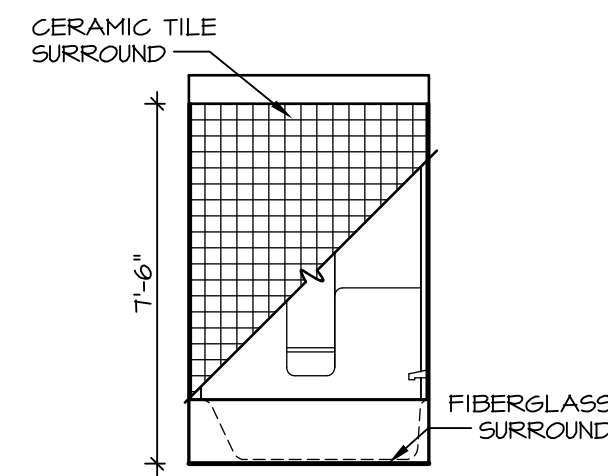
A BASEMENT BATH
SCALE: 1/4" = 1'-0"



H OWNER'S BATH
SCALE: 1/4" = 1'-0"



G BATH #1
SCALE: 1/4" = 1'-0"



F BATH #1
SCALE: 1/4" = 1'-0"

NOTES:

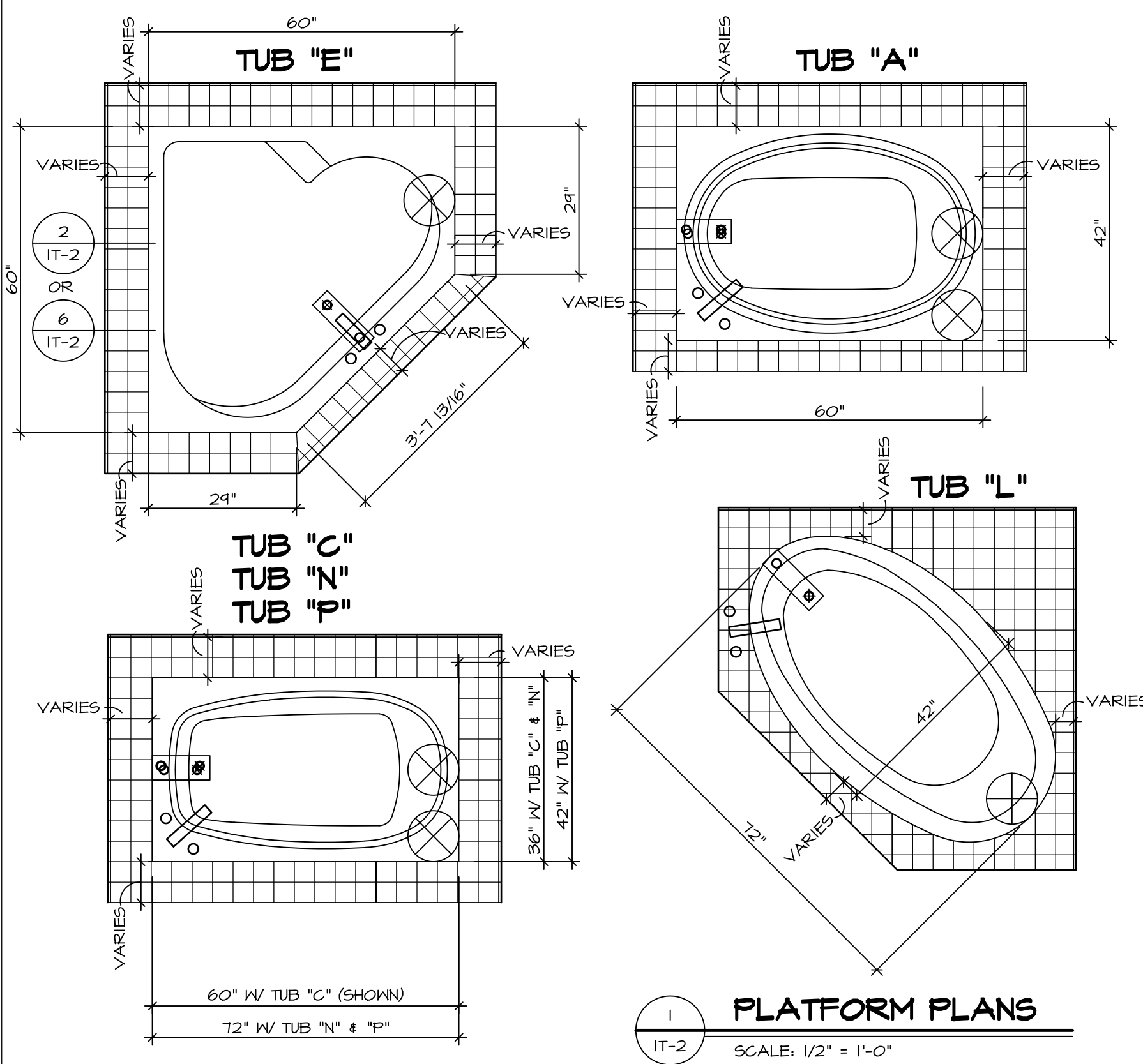
1. TEMPERED GLASS SHOWER ENCLOSURE WITH SWING DOOR OR OPTIONAL SLIDING DOOR BY DIVISION
2. TUB ACCESS PANELS PROVIDED AS NEEDED, ALL MATERIALS BY DIVISION
3. REFER TO SHEET IT-2 FOR TUB AND SHOWER DETAILS.
4. ALL V5DB24-42 DRAWERS TO BE SET ON RIGHT HAND.
5. BATH ELEVATIONS ARE SHOWN PER PLAN.

| REV. NO. | DATE | REMARKS |
|----------|----------|-------------------------|
| 1 | 08/04/18 | DM - DRAINING ALIGNMENT |

NVR, Inc., owner, expressly reserves its copyright in these plans. These plans are not to be reproduced, changed, adapted in any way, or any part thereof, without the prior written consent of NVR, Inc.

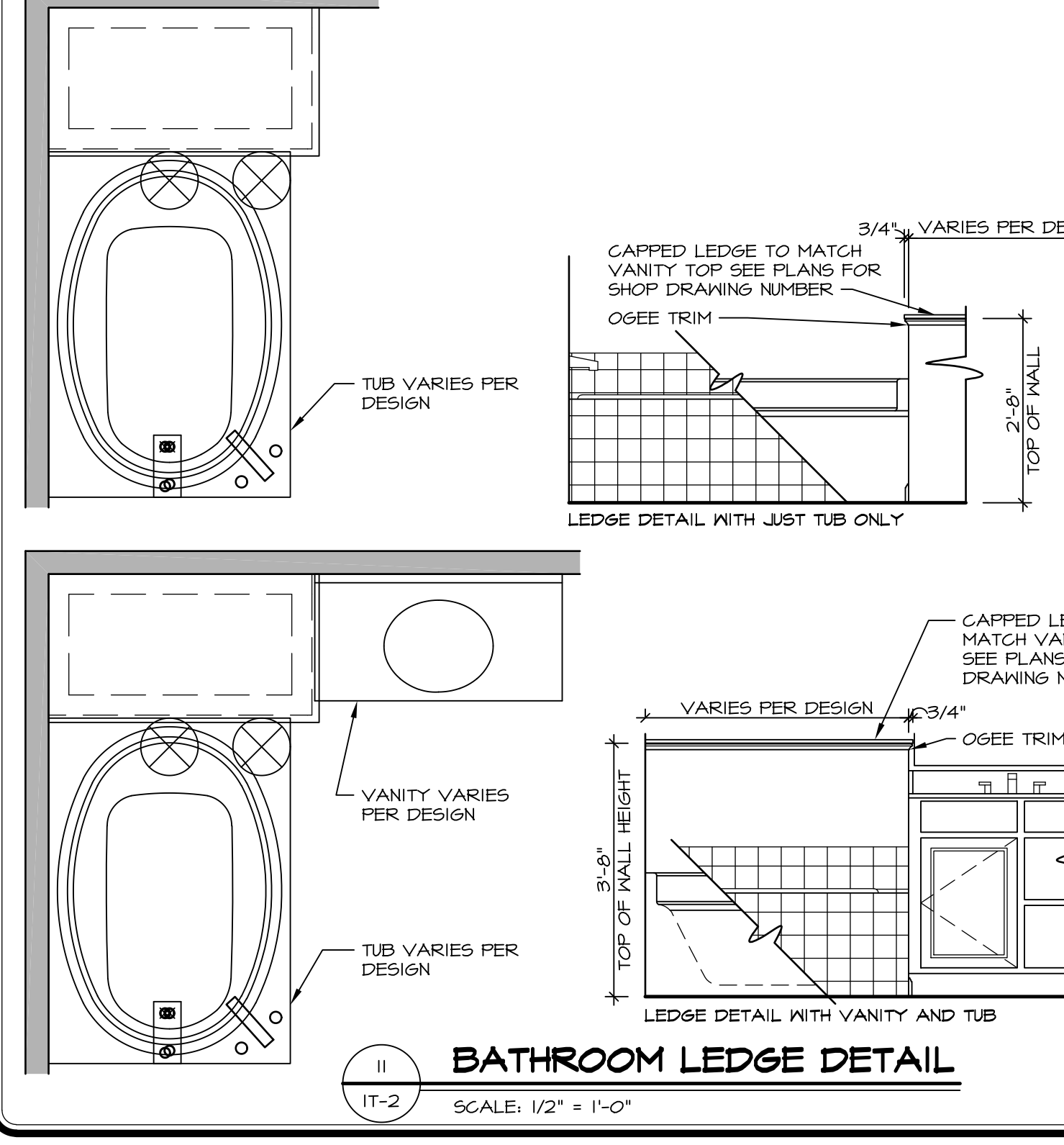
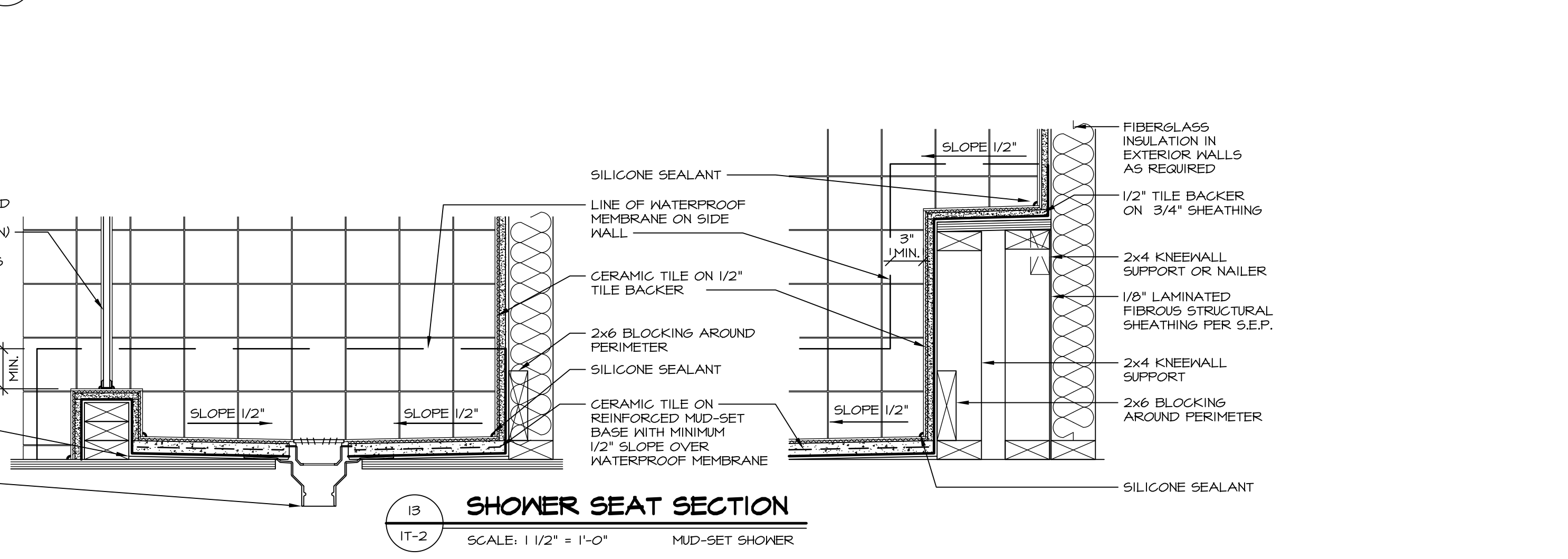
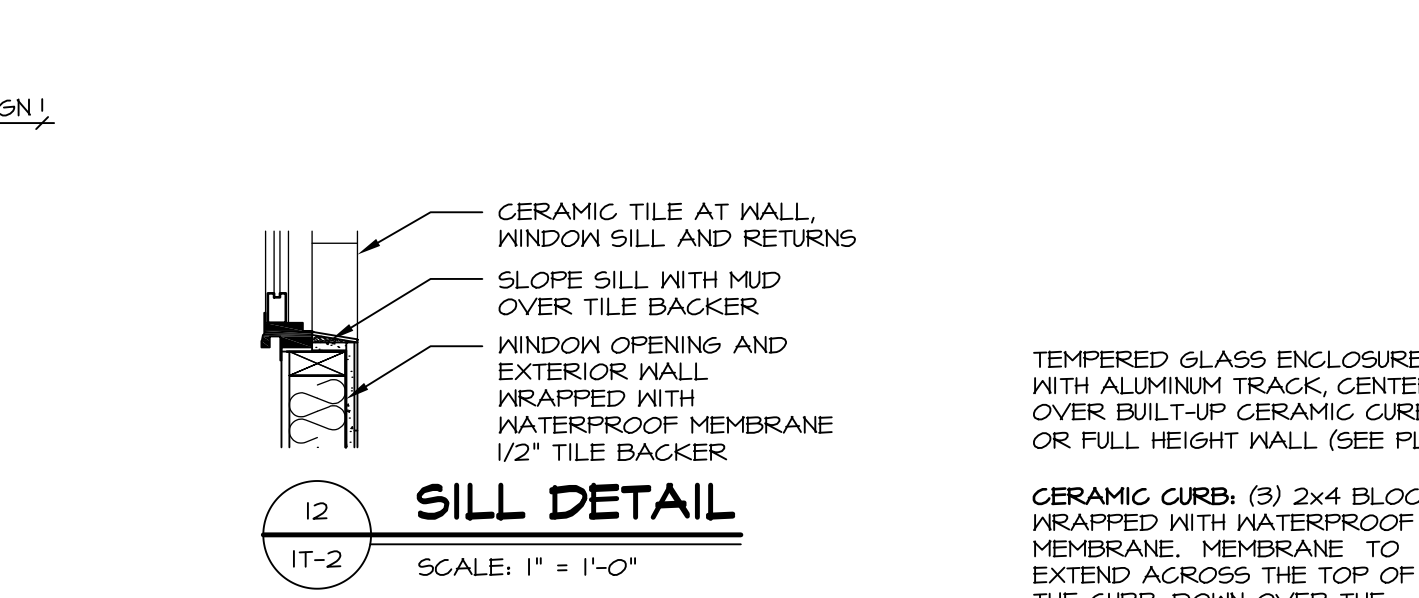
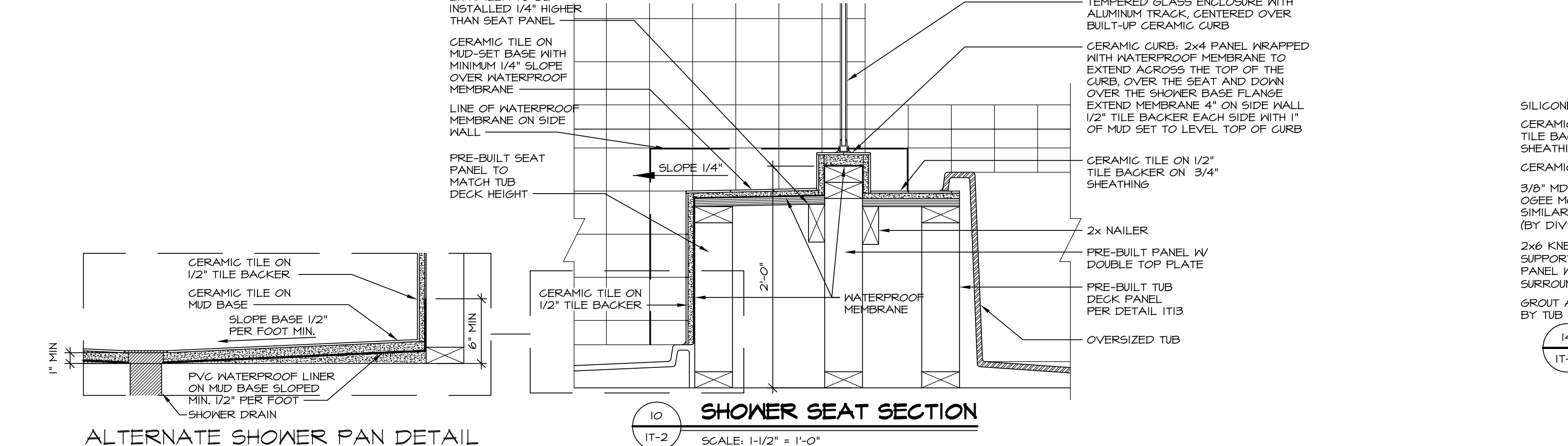
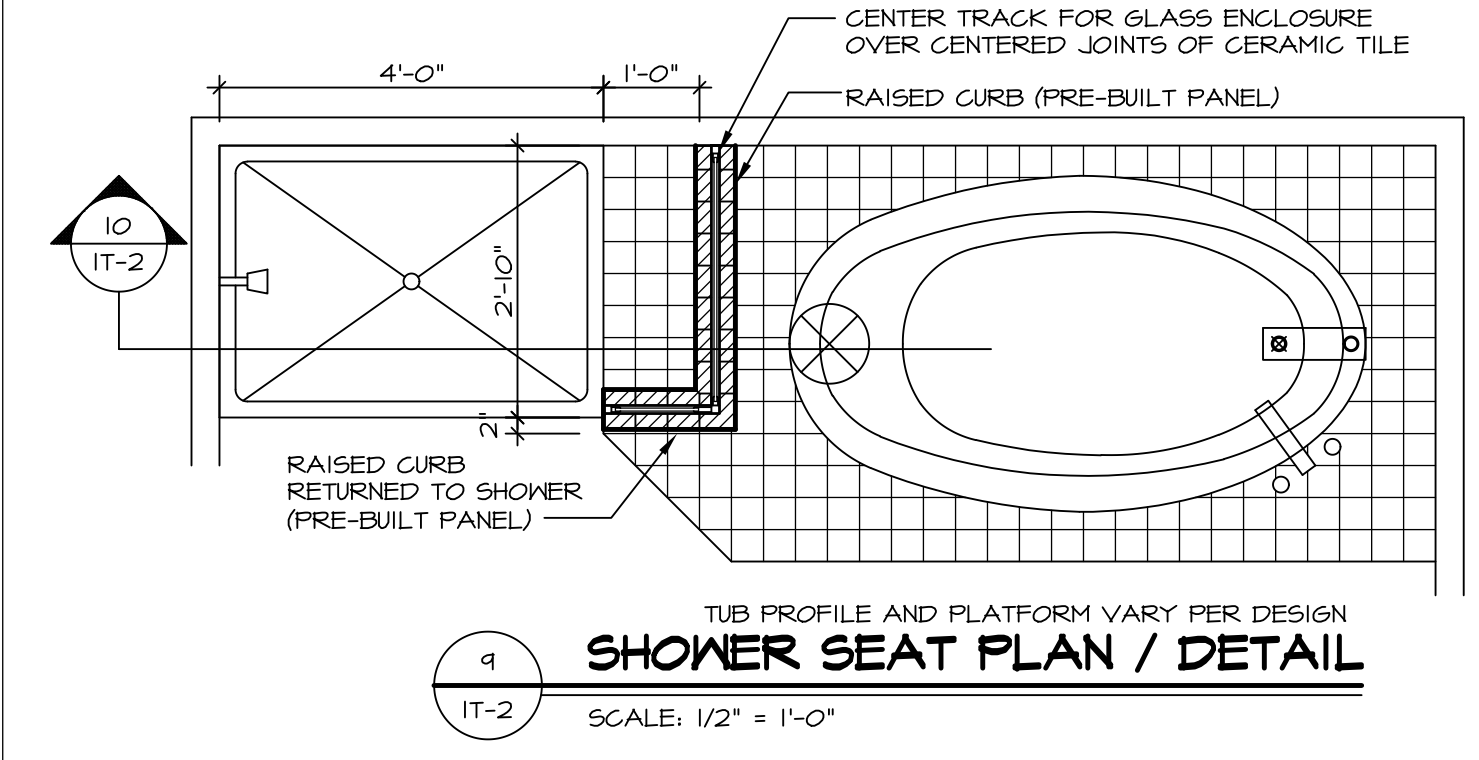
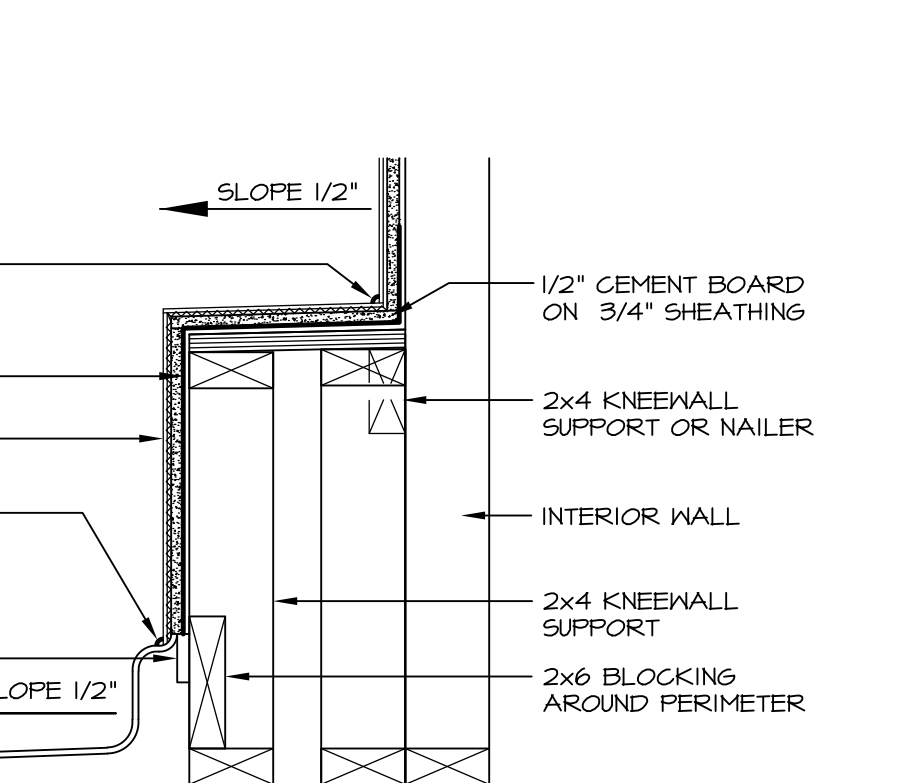
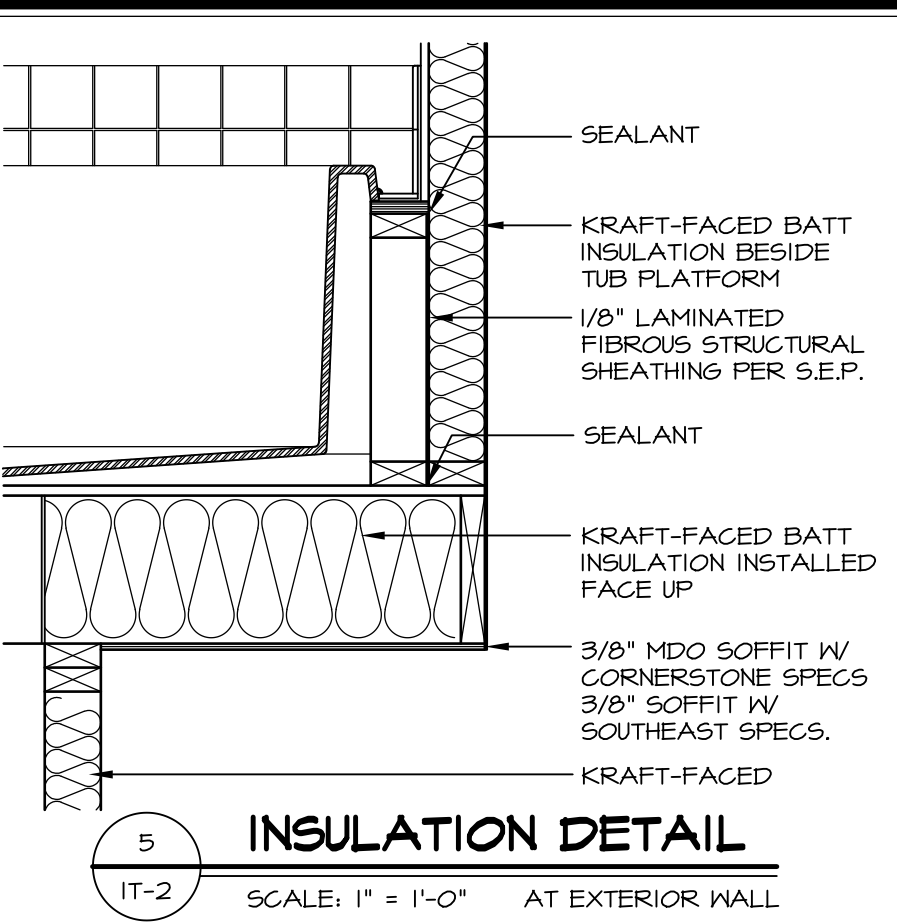
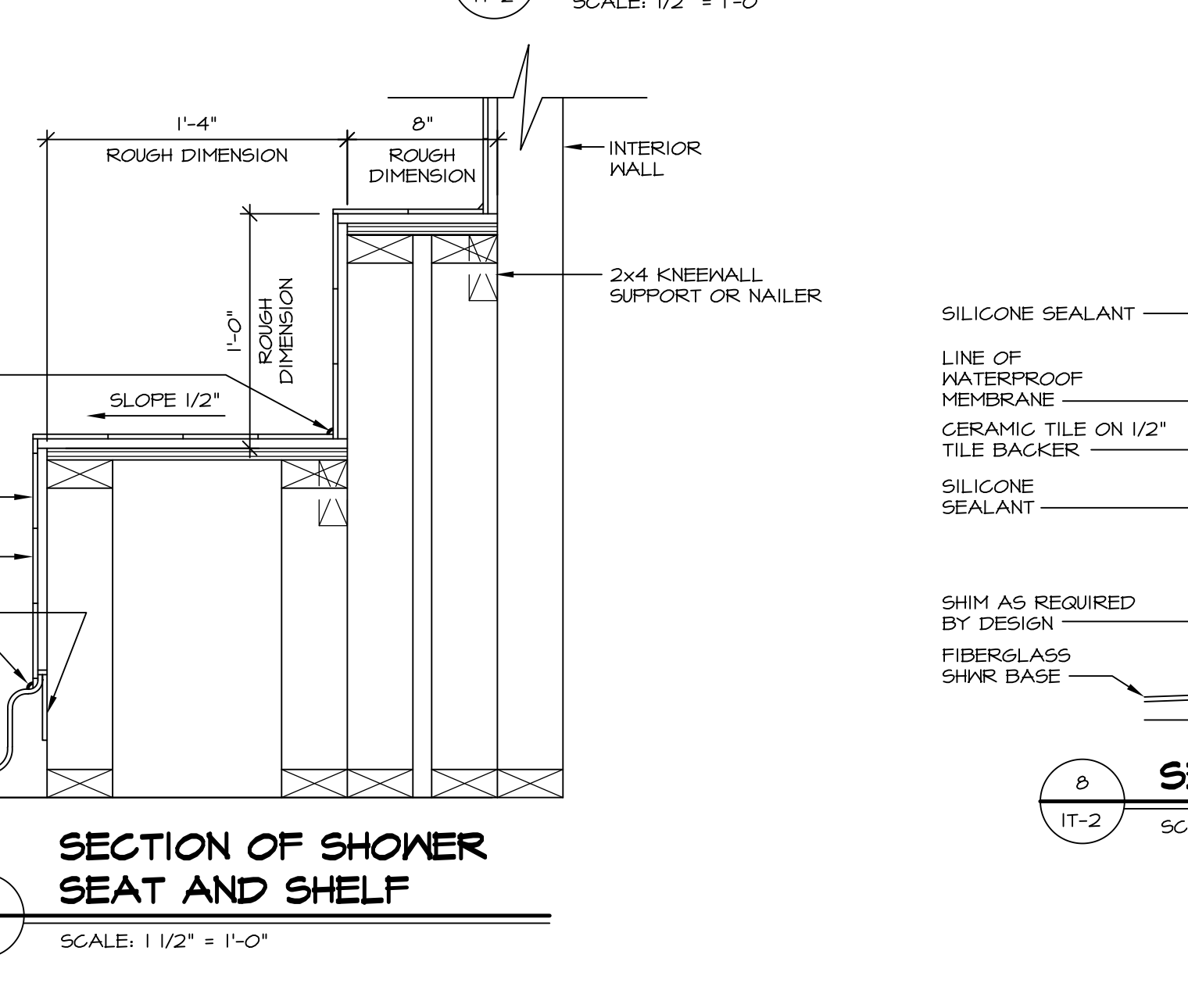
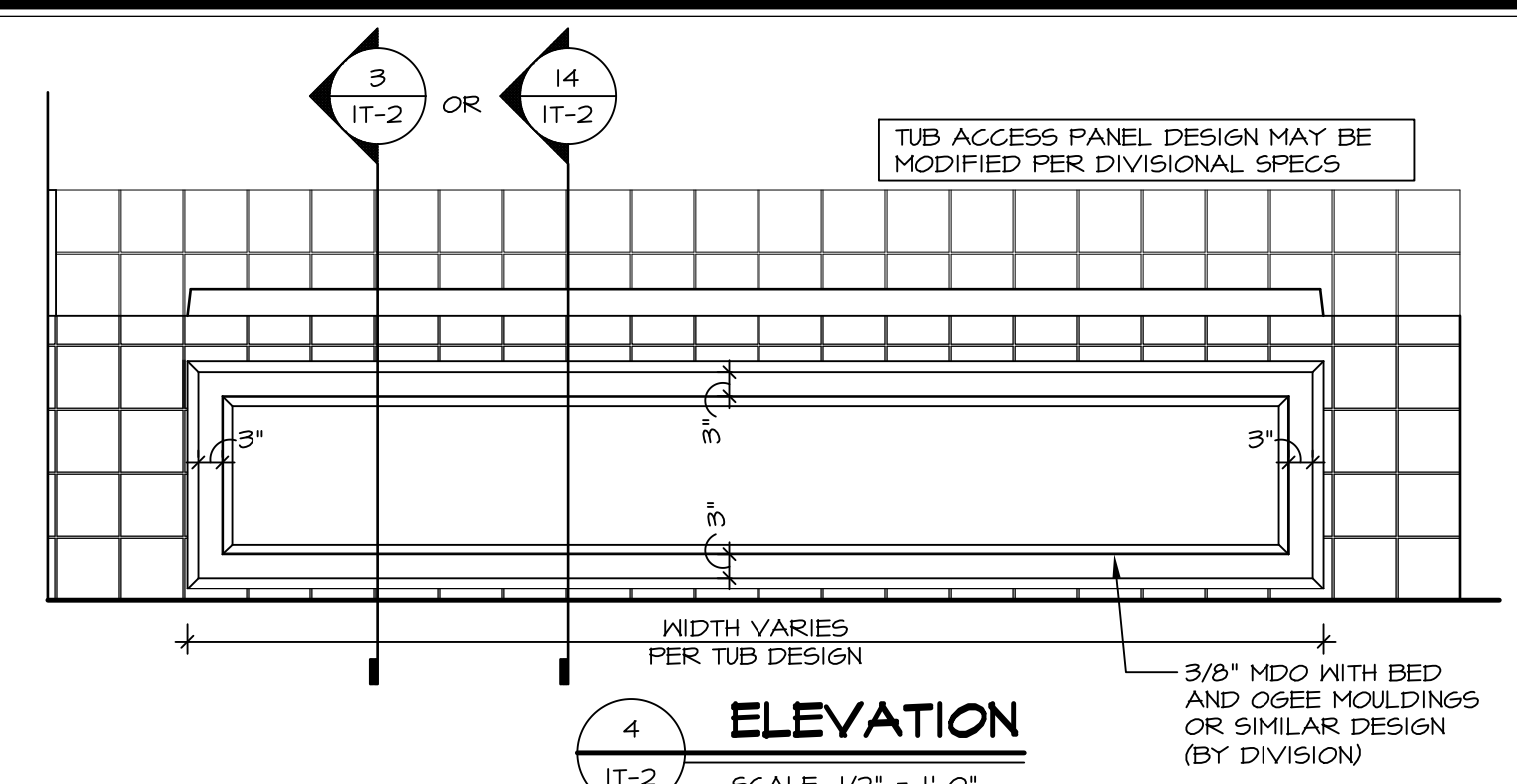
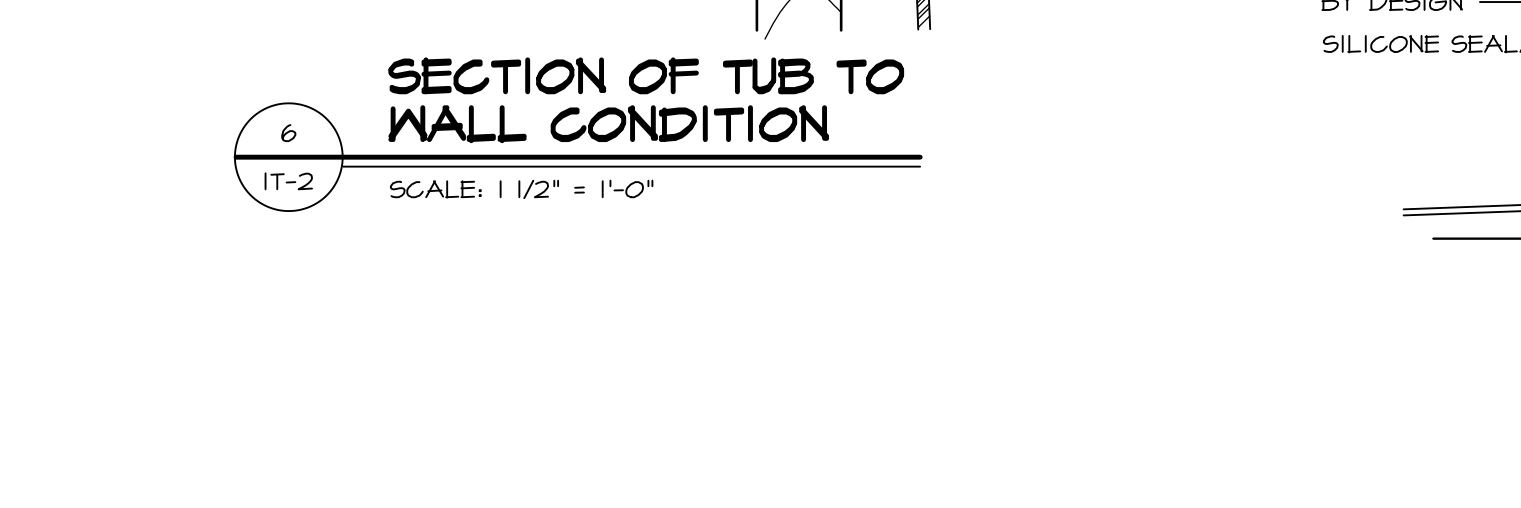
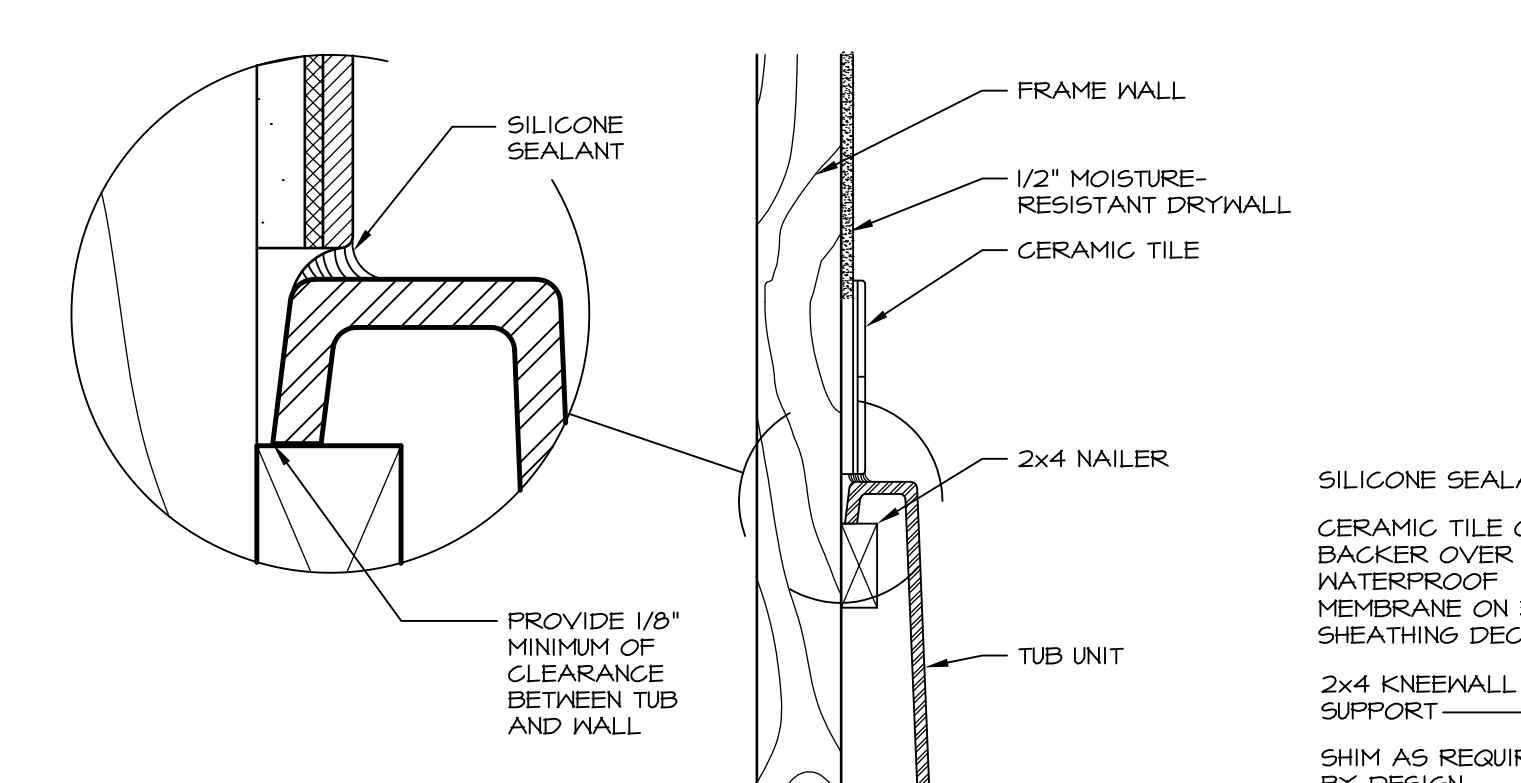
NVR
Architectural Services
5285 Westpark Drive, Suite 100
Frederick, MD 21703

| | | | | | | |
|-----------|--------------------|---------|---------|----------|-------|--------|
| SHEET NO. | MODEL | SET NO. | VERSION | DRAWN BY | DATE: | OPTION |
| A-13 | PALERMO | 03 | 03 | | | |
| | DRAWING TITLE | | | | | |
| | BATH ELEVATIONS | | | | | |
| | OPTION DESCRIPTION | | | | | |
| | | | | | | |



1 PLATFORM PLANS
SCALE: 1/2" = 1'-0"

| TUB | MANUF. | HEIGHT | WIDTH | LENGTH | TUB DECK PANEL HEIGHT |
|-----|------------------|---------|-------|--------|-----------------------|
| "A" | KOHLER/ STERLING | 18 3/4" | 42" | 60" | 17 1/8" |
| "C" | KOHLER/ STERLING | 18 3/4" | 36" | 60" | 17 1/8" |
| "E" | KOHLER/ STERLING | 19 1/2" | 60" | 60" | 17 7/8" |
| "L" | KOHLER/ STERLING | 18 1/2" | 42" | 72" | 16 7/8" |
| "N" | KOHLER/ STERLING | 18 3/4" | 36" | 72" | 17 1/8" |
| "P" | KOHLER/ STERLING | 18 3/4" | 42" | 72" | 17 1/8" |



REVISIONS

| REV. NO. | DATE | DESCRIPTION |
|----------|--------|--|
| 1 | 5/1/17 | EBP - REVISED DETAIL 1 AND 11 TO REMOVE TUB ACCESS PANEL REF. (DSS #15 5414) |
| 2 | 9/2/17 | EBP - REVISED T-FLY NOTE TO CALL OUT LFS |
| 3 | 9/2/17 | EBP - REVISED NOTE ON DETAIL #1 - REVISED ORDER OF MATERIAL PARA#6934 |

REMARKS

NVR, Inc., owner, expressly reserves its common law copyright and other property rights in these plans. These plans are not to be reproduced, stored in a retrieval system, or transmitted in any form or by any means, electronic, mechanical, photocopying, recording, or by any information storage and retrieval system, without first obtaining the expressed written consent of NVR, Inc.

NVR
NVR, Inc.
Architectural Services
5285 Westpark Drive
Frederick, MD 21703

SET NO. NVR
VERSION
DRAWN BY
DATE:
OPTION

MODEL
STANDARD DETAILS
DRAWING TITLE
INTERIOR TRIM DETAILS
BATH DETAILS
OPTION DESCRIPTION

SHEET NO.
IT-2

J:\Dwg\NVR\Interior Trim\IT2.dwg 09/27/17 - 9:20 am