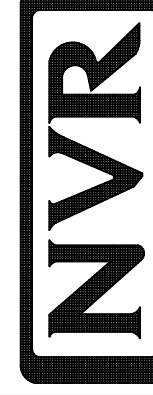


PLUMBING PLAN
SCALE: 1/4" = 1'-0"

SHEET NO. **A-5**
48

MODEL **PALERMO**
DRAWING TITLE **PLUMBING PLAN**
OPTION DESCRIPTION

SET NO. **PAL00**
VERSION **03**
DRAWN BY
DATE:
OPTION

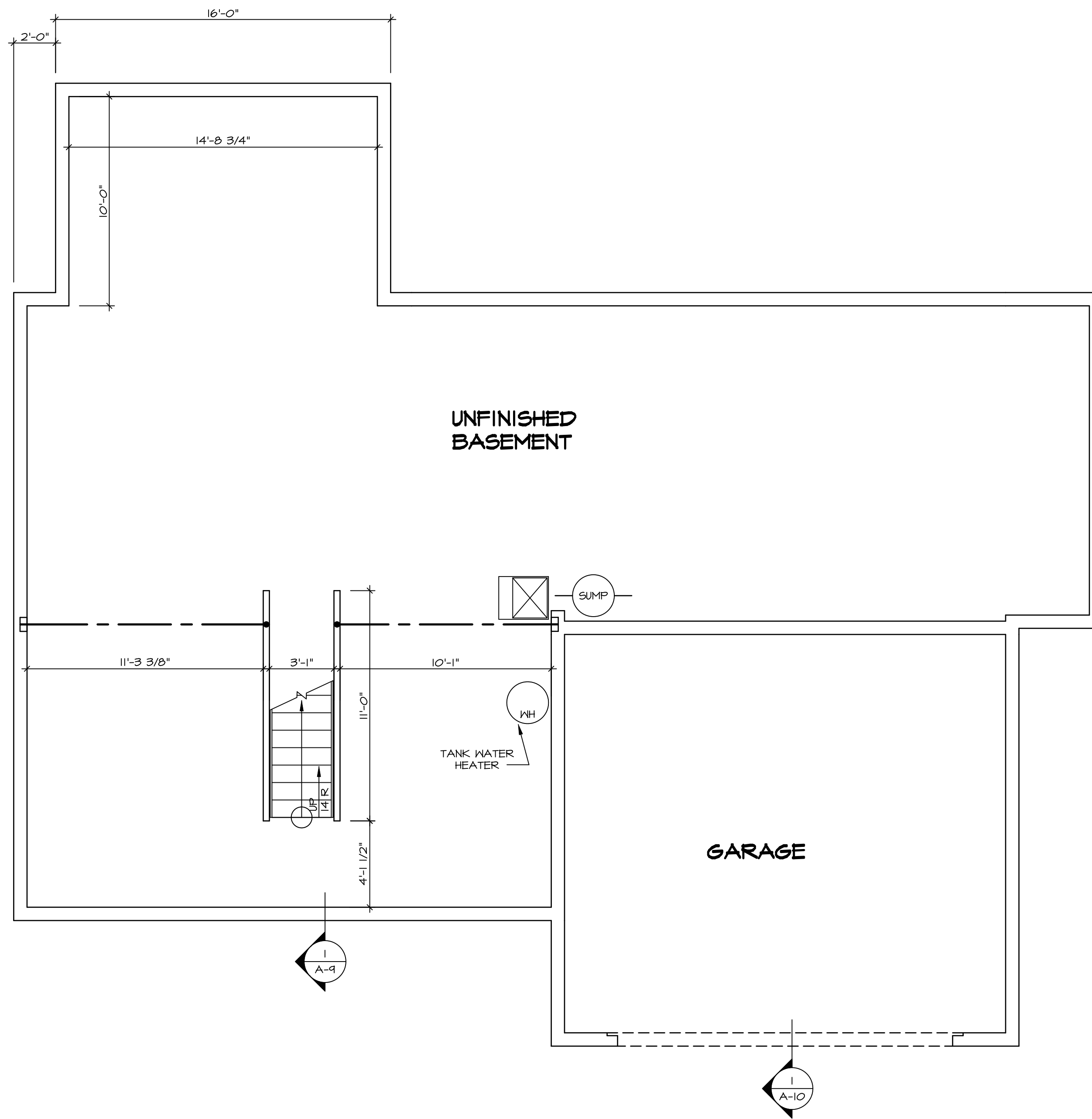


NVR, Inc.
Architectural Services
5285 Westpark Drive, Suite 100
Frederick, MD 21703

NVR, Inc., owner, expressly reserves its copyright in these plans. These plans are not to be reproduced, changed, copied, or otherwise used in any way without the prior written consent of NVR, Inc.

REV. NO. | DATE

REMARKS



LEGEND

	BEARING WALL
	NON BEARING WALL
	INDICATES BEARING FROM POINT-LOAD ABOVE JACKS
	JACKS
	BEAM/HEADER
	PAD FOOTING
	STEEL COLUMN
	PORTAL FRAME
	JOIST/TRUSS
	LVL
	ENGINEERING PAGE NUMBER

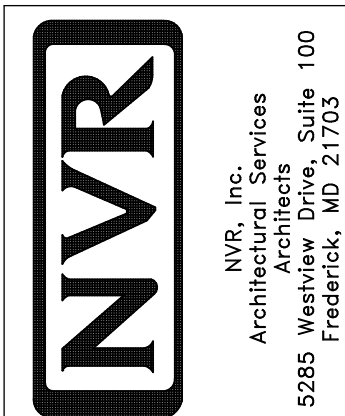
SEE FC DETAILS FOR FRAMING CONNECTORS

- FLOOR PLAN NOTES**
1. ALL HEADERS ARE (2) 2x6 w/ 2x4 WALLS OR (3) 2x6 w/ 2x6 WALLS, UNLESS OTHERWISE NOTED.
 2. ALL HEADERS TO HAVE (1) 2x4 OR 2x6 JACK EACH END, UNLESS OTHERWISE NOTED.
 3. ALL EXTERIOR WALLS TO BE 4" AND ALL INTERIOR WALLS TO BE 3 1/2", UNLESS OTHERWISE NOTED.
 4. HATCHED AREAS INDICATE DROPPED CEILINGS. ALL DROPPED CEILINGS ARE 12" UNLESS OTHERWISE NOTED.
 5. SEE "BRACED WALL PANEL DETAIL SHEET" FOR SPECIAL WALL FRAMING LOCATIONS AND HEADER SIZES, IF APPLICABLE.
 6. SEE STANDARD DETAIL CATEGORY "IT" SHEET(S) FOR INTERIOR TRIM DETAILS.
 7. SEE ARCHITECTURAL DETAIL SHEET "AD" FOR HOUSE SPECIFIC INTERIOR TRIM OPTION TABLE.
 8. ALL WINDOWS HAVE 7'-0" 1/2" HEADER HEIGHT UNLESS OTHERWISE NOTED.
 9. ALL CASED OPENINGS AT 7'-11", UNLESS OTHERWISE NOTED.

- GYPSUM NOTES**
- AT GARAGE:
GYPSUM BOARD AT COMMON WALLS, CEILINGS, BEAM WRAPS AND SUPPORTS PER STANDARD DETAIL FA-1(b) FIRE ASSEMBLIES OR AS REQUIRED BY LOCAL CODE.
- AT STAIRS:
1/2" GYPSUM BOARD AT UNDERSIDE OF STAIRS AND WALLS IN CLOSET

BASEMENT FLOOR PLAN
SCALE: 1/4" = 1'-0"

SHEET NO. A-6	MODEL PALERMO	SET NO. PAL00	REV. NO. 1	DATE 08/05/16	TH - DRAWING ALIGNMENT	REMARKS
	DRAWING TITLE BASEMENT FLOOR PLAN	VERSION 03	DRAWN BY			
OPTION DESCRIPTION 51	DATE:	OPTION				



NVR, Inc., owner, expressly reserves its copyright in these plans. These plans are not to be reproduced, changed, copied, or otherwise used in any way without the written consent of NVR, Inc.

FIRST FLOOR JACK SCHEDULE				
IDENTIFIER	DESCRIPTION	OPTIONS	ENG. NUM.	REMARKS
J106	JACK - (2) 2X4 SPF STUD GRADE		1012	
J107	JACK - (2) 2X4 SPF STUD GRADE		1012	
J108	JACK - (2) 2X4 SPF STUD GRADE		1012	
J114	JACK - (2) 2X4 SPF STUD GRADE	EDQMAP	1075, 1078	
J120	JACK - (4) 2X6 SPF STUD GRADE	MAA	1019	
J121	JACK - (3) 2X6 SPF STUD GRADE	MAA	1019	FIELD INSTALLED
J122	JACK - (3) 2X4 SPF STUD GRADE	SRN	1040	
J123	JACK - (3) 2X4 SPF STUD GRADE	SRN	1044	
J130	JACK - (2) 2X4 SPF STUD GRADE	ELL	1029	
J131	JACK - (2) 2X4 SPF STUD GRADE	ELL	1009	
J132	JACK - (2) 2X4 SPF STUD GRADE	ELL	1029	
J150	JACK - (3) 2X4 SPF STUD GRADE	GCF	1044	
J151	JACK - (3) 2X4 SPF STUD GRADE	GCF	1044	
J152	JACK - (2) 2X4 SPF STUD GRADE	GCFMAV	1044, 1131	CRIPPLES
J153	JACK - (2) 2X4 SPF STUD GRADE	GCFMAV	1044, 1131	CRIPPLES

LVL PLY TO PLY FASTENING SCHEDULE:

1A - (2) FLY UP TO AND INCLUDING 11 7/8" TALL; FASTEN FLIES W/ (2) ROWS 16D NAILS AT 12" O.C.
 2A - (2) FLY 14" TO AND INCLUDING 18" TALL (INCLUSIVE); FASTEN FLIES W/ (3) ROWS 16D NAILS AT 12" O.C.
 3A - (2) FLY 20" TALL AND OVER; FASTEN FLIES W/ (4) ROWS 16D NAILS AT 12" O.C.
 4A - (3) FLY UP TO AND INCLUDING 11 7/8" TALL; FASTEN FLIES W/ (2) ROWS 16D NAILS AT 12" O.C. FROM EACH SIDE
 5A - (3) FLY 14" TO AND INCLUDING 18" TALL (INCLUSIVE); FASTEN FLIES W/ (3) ROWS 16D NAILS AT 12" O.C. FROM EACH SIDE
 6A - (3) FLY 20" TALL AND OVER; FASTEN FLIES W/ (4) ROWS 16D NAILS AT 12" O.C. FROM EACH SIDE

FIRST FLOOR BEAM/HEADER SCHEDULE					
IDENTIFIER	DESCRIPTION	LENGTH	OPTIONS	ENG. NUM.	REMARKS
B101-3	LVL - 16	14'-4 1/2"	MAA	1019	5A, FIELD INSTALL
B102	BEAM STEEL - W12X40	22'-3 1/2"	ELA, ELC, ELL, MAV	1051, 1133	
B101-2	LVL - 14	17'-4"	MAV	1050, 1051	2A, FIELD INSTALL
PF104-2	EXT HEADER - 2X12 - 2 PLY	11'-4"	GCF	1059, 1148	2-PLY, FIELD INSTALL

LEGEND	
	BEARING WALL
	NON BEARING WALL
	INDICATES BEARING FROM POINT-LOAD ABOVE
	JACKS
	BEAM/HEADER
	PAD FOOTING
	STEEL COLUMN
	PORTAL FRAME
	JOIST/TRUSS
	LVL
	ENGINEERING PAGE NUMBER

STEEL COLUMN SCHEDULE					
IDENTIFIER	STYLE	HEIGHT	OPTIONS	ENG. NUM.	REMARKS
C101	STANCHION - 3 IN SCHED 40	9'-0 11/16"	FBA	1051, 1133, 1128	
C103	STANCHION - 3 IN SCHED 40	9'-0 11/16"	FBA	1051, 1133, 1128	

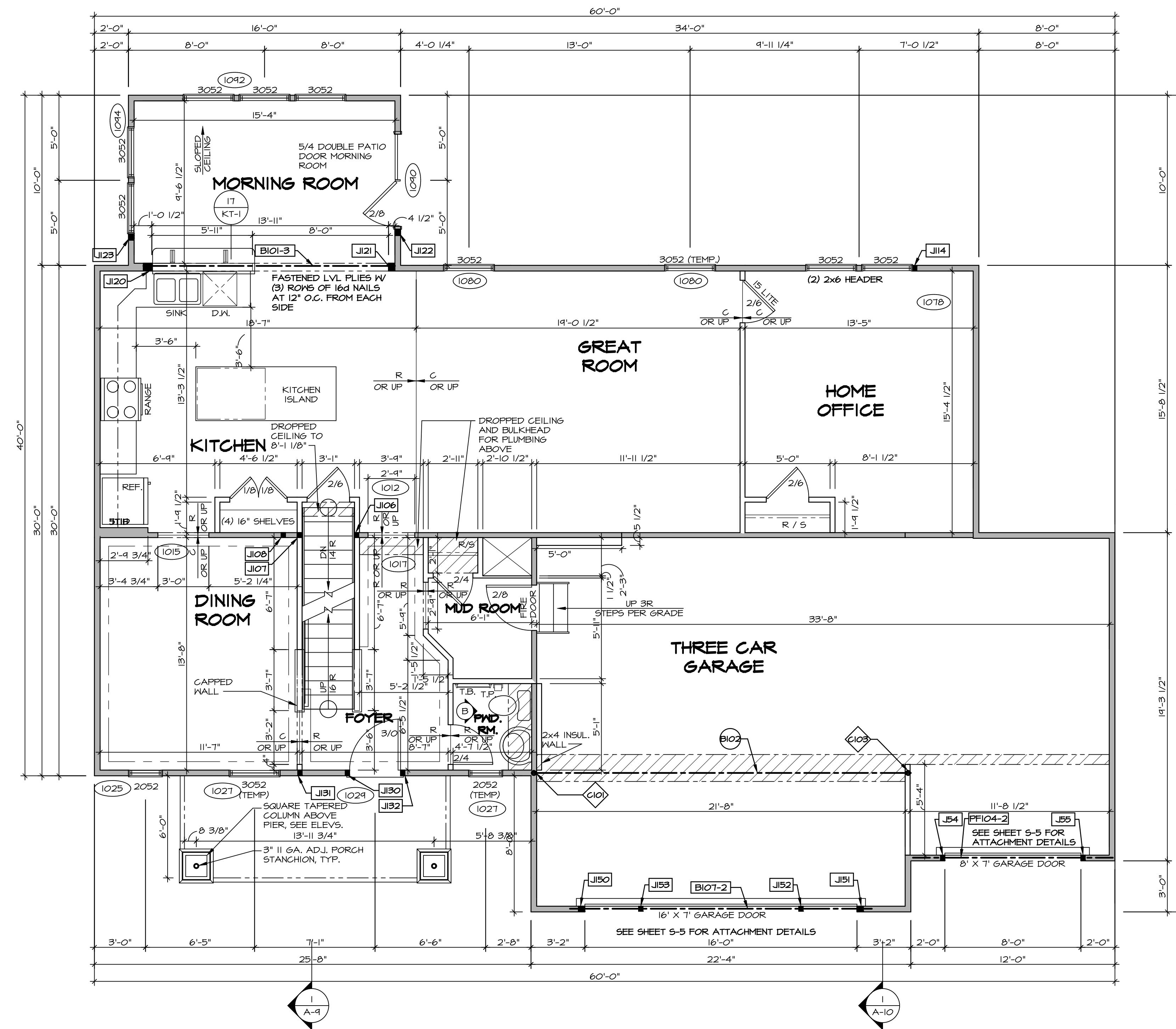
FLOOR PLAN NOTES

- ALL HEADERS ARE (2) 2x6 W/ 2x4 WALLS OR (3) 2x6 W/ 2x6 WALLS, UNLESS OTHERWISE NOTED.
- ALL HEADERS TO HAVE (1) 2x4 OR 2x6 JACK AND KING STUD EACH END, UNLESS OTHERWISE NOTED.
- ALL EXTERIOR WALLS TO BE 4" W/ OSB OR 3 1/2" W/ T-PLY, ALL INTERIOR WALLS TO BE 3 1/2", UNLESS OTHERWISE NOTED.
- HATCHED AREAS INDICATE DROPPED CEILINGS. ALL DROPPED CEILINGS ARE 12" UNLESS OTHERWISE NOTED.
- SEE 'BRACED WALL PANEL DETAIL SHEET' FOR SPECIAL WALL FRAMING LOCATIONS AND HEADER SIZES, IF APPLICABLE.
- SEE STANDARD DETAIL CATEGORY '11" SHEET(S) FOR INTERIOR TRIM DETAILS.
- SEE ARCHITECTURAL DETAIL SHEET 'AD' FOR HOUSE SPECIFIC INTERIOR TRIM OPTION TABLE.
- ALL WINDOWS HAVE 7'-0 1/2" HEADER HEIGHT UNLESS OTHERWISE NOTED.
- ALL HEADERS IN NON-BEARING WALLS SHALL BE A SINGLE FLAT 2X4 OR 2X6 ATTACHED TO CRIPPLES ABOVE, UNLESS OTHERWISE NOTED.

GYPSUM NOTES

AT GARAGE:
 GYPSUM BOARD AT COMMON WALLS, CEILING, BEAM WRAPS AND SUPPORTS PER STANDARD DETAIL FA-1(b) FIRE ASSEMBLIES OR AS REQUIRED BY LOCAL CODE.

AT STAIRS:
 1/2" GYPSUM BOARD AT UNDERSIDE OF STAIRS AND WALLS IN CLOSET



FIRST FLOOR PLAN
 SCALE: 1/4" = 1'-0"

REVISIONS

REV. NO.	DATE	DESCRIPTION
1	08/04/16	TM - DRAWING ALIGNMENT
2	07/12/11	SL5 - T-PLY CONVERSION PROJECT

MODEL
 PALERMO
DRAWING TITLE
 FIRST FLOOR PLAN
OPTION DESCRIPTION
 A-7

SET NO. PALOO
 VERSION 03
 DRAWN BY
 DATE:
 OPTION

ENGINEERING PAGE NUMBER
 53

NVR
 NVR, Inc.
 Architectural Services
 5285 West...
 Frederick, MD 21703

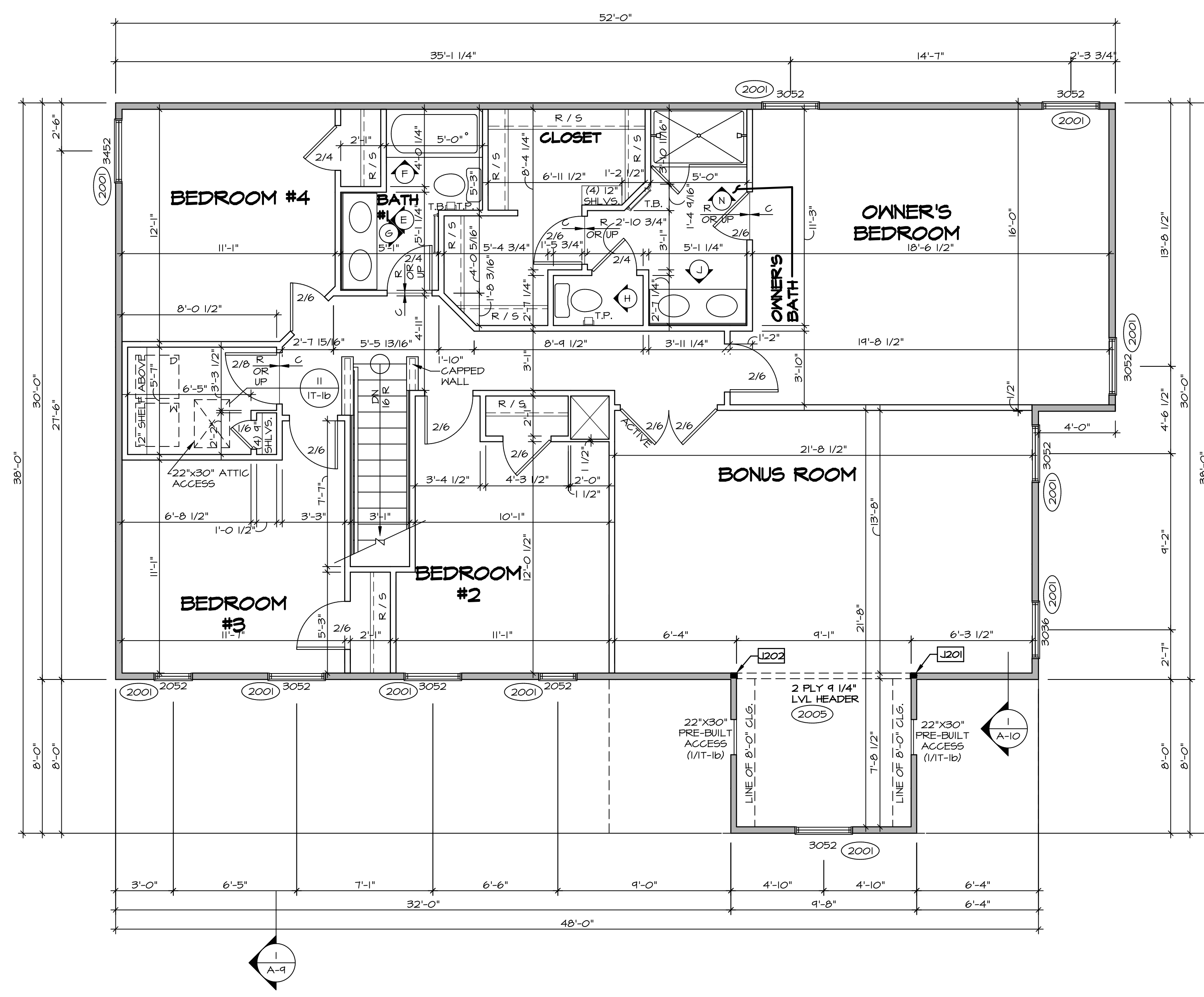
NVR, Inc., owner, expressly reserves its copyright in these plans. These plans are not to be reproduced, changed, copied, or otherwise used in any way without the written consent of NVR, Inc.

C:\NVR\Solves\PALERMO_PALOO_03\DC-16-K453\77993\Sheets\1st_Specific\53 A-7 PLAN_L5.dwg 05/02/18 - 5:47 pm

SECOND FLOOR JACK SCHEDULE				
IDENTIFIER	DESCRIPTION	OPTIONS	ENG. NUM.	REMARKS
J201	JACK - (2) 2X4 SFF STUD GRADE	MAV	2005	
J202	JACK - (2) 2X4 SFF STUD GRADE	MAV	2005	

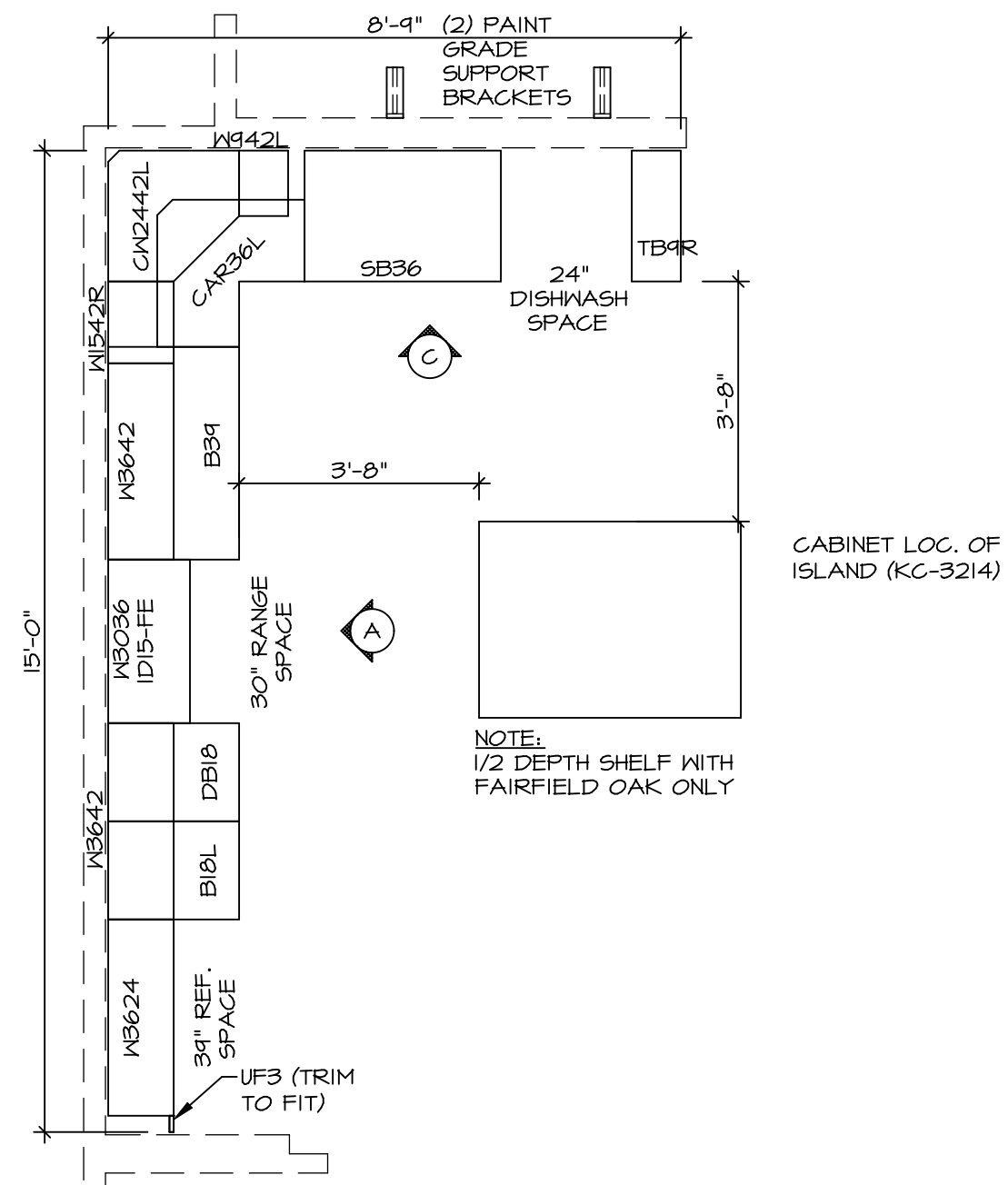
LEGEND	
	BEARING WALL
	NON BEARING WALL
	INDICATES BEARING FROM POINT-LOAD ABOVE
	JACKS
	BEAM/HEADER
	PAD FOOTING
	STEEL COLUMN
	PORTAL FRAME
	JOIST/TRUSS
	LVL
	ENGINEERING PAGE NUMBER

- FLOOR PLAN NOTES**
- ALL HEADERS ARE (2) 2x6 w/ 2x4 WALLS OR (3) 2x6 w/ 2x6 WALLS, UNLESS OTHERWISE NOTED.
 - ALL HEADERS TO HAVE (1) 2x4 OR 2x6 JACK AND KING STUD EACH END, UNLESS OTHERWISE NOTED.
 - ALL EXTERIOR WALLS TO BE 4" w/ OSB OR 3 1/2" w/ T-PLY, ALL INTERIOR WALLS TO BE 3 1/2", UNLESS OTHERWISE NOTED.
 - HATCHED AREAS INDICATE DROPPED CEILINGS. ALL DROPPED CEILINGS ARE 12" UNLESS OTHERWISE NOTED.
 - SEE "BRACED WALL PANEL DETAIL SHEET" FOR SPECIAL WALL FRAMING LOCATIONS AND HEADER SIZES, IF APPLICABLE.
 - SEE STANDARD DETAIL CATEGORY "1T" SHEET(S) FOR INTERIOR TRIM DETAILS.
 - SEE ARCHITECTURAL DETAIL SHEET "AD" FOR HOUSE SPECIFIC INTERIOR TRIM OPTION TABLE.
 - ALL WINDOWS HAVE 7'-0 1/2" HEADER HEIGHT UNLESS OTHERWISE NOTED.
 - ALL HEADERS IN NON-BEARING WALLS SHALL BE A SINGLE FLAT 2x4 OR 2x6 ATTACHED TO GRIPPLES ABOVE, UNLESS OTHERWISE NOTED.

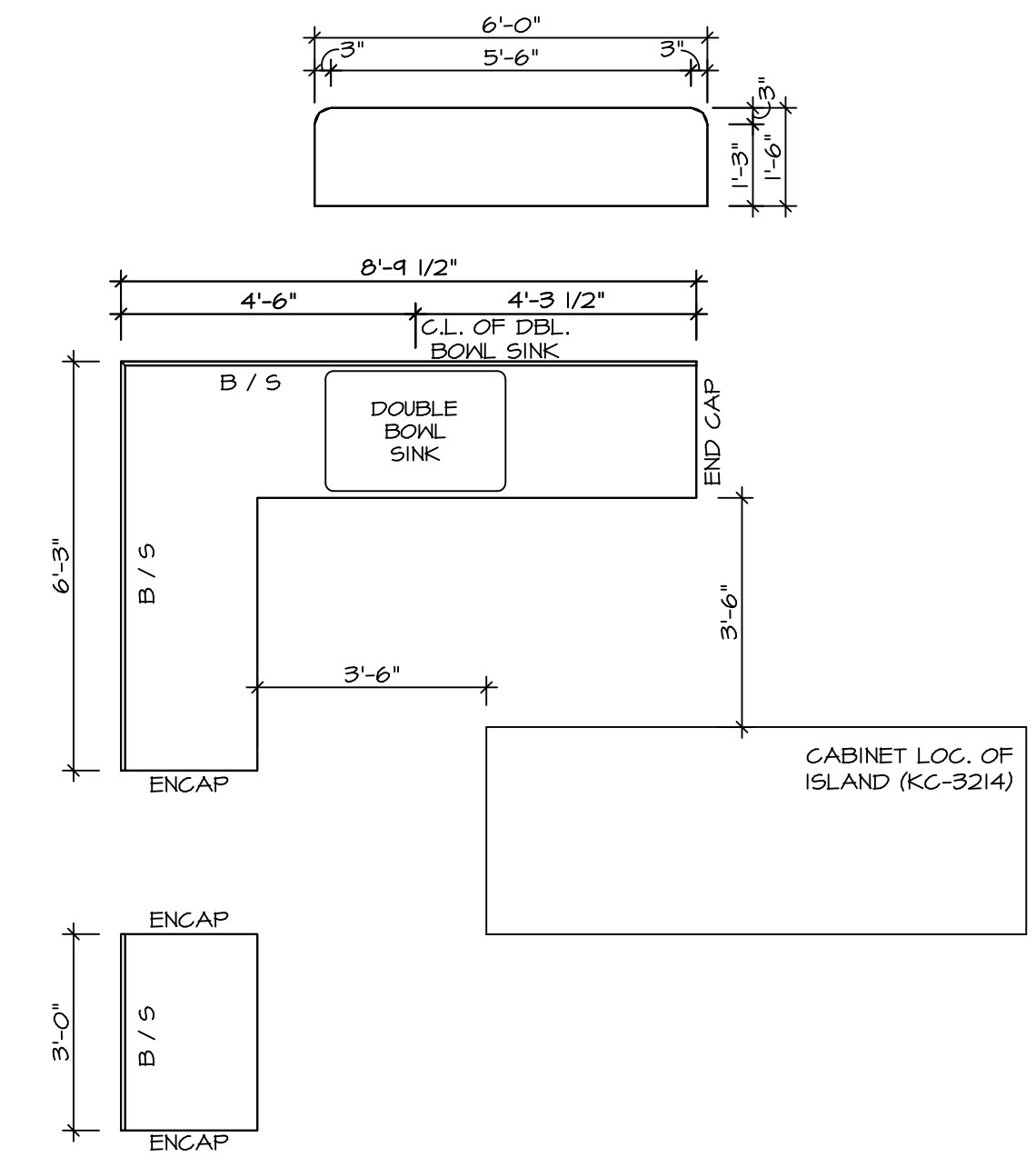


SECOND FLOOR PLAN
SCALE: 1/4" = 1'-0"

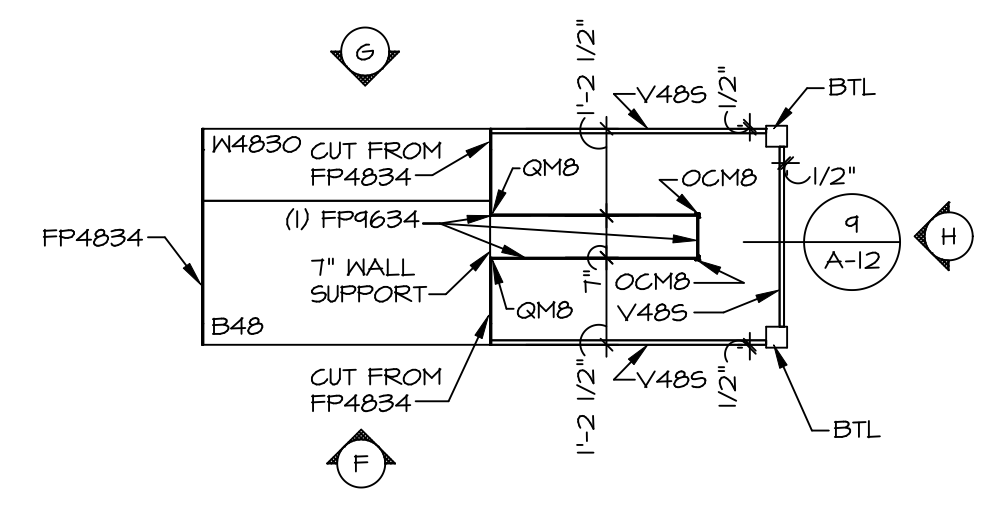
SHEET NO. A-8	MODEL PALERMO	DRAWING TITLE SECOND FLOOR PLAN	OPTION DESCRIPTION 60	SET NO. PALOO	VERSION 03	DRAWN BY	DATE:	OPTION
				<p>NVR, Inc. Architectural Services 5285 West... Suite 100 Frederick, MD 21703</p>				
REMARKS				REV. NO.	DATE	1 08/04/16 TH - DRAWING ALIGNMENT 2 07/12/17 SLS - T-PLY CONVERSION PROJECT		



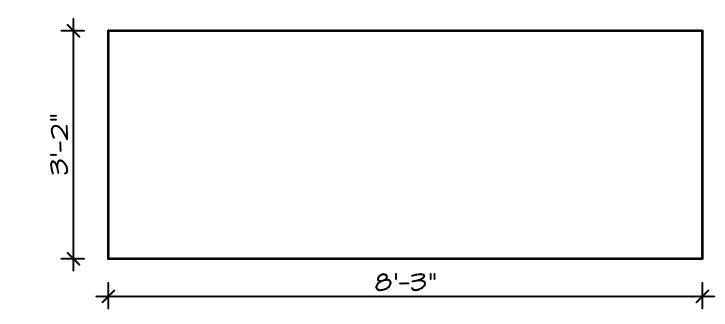
KITCHEN CABINET PLAN-KC-2862
 SCALE: 3/8" = 1'-0"
 STANDARD KITCHEN MORNING ROOM



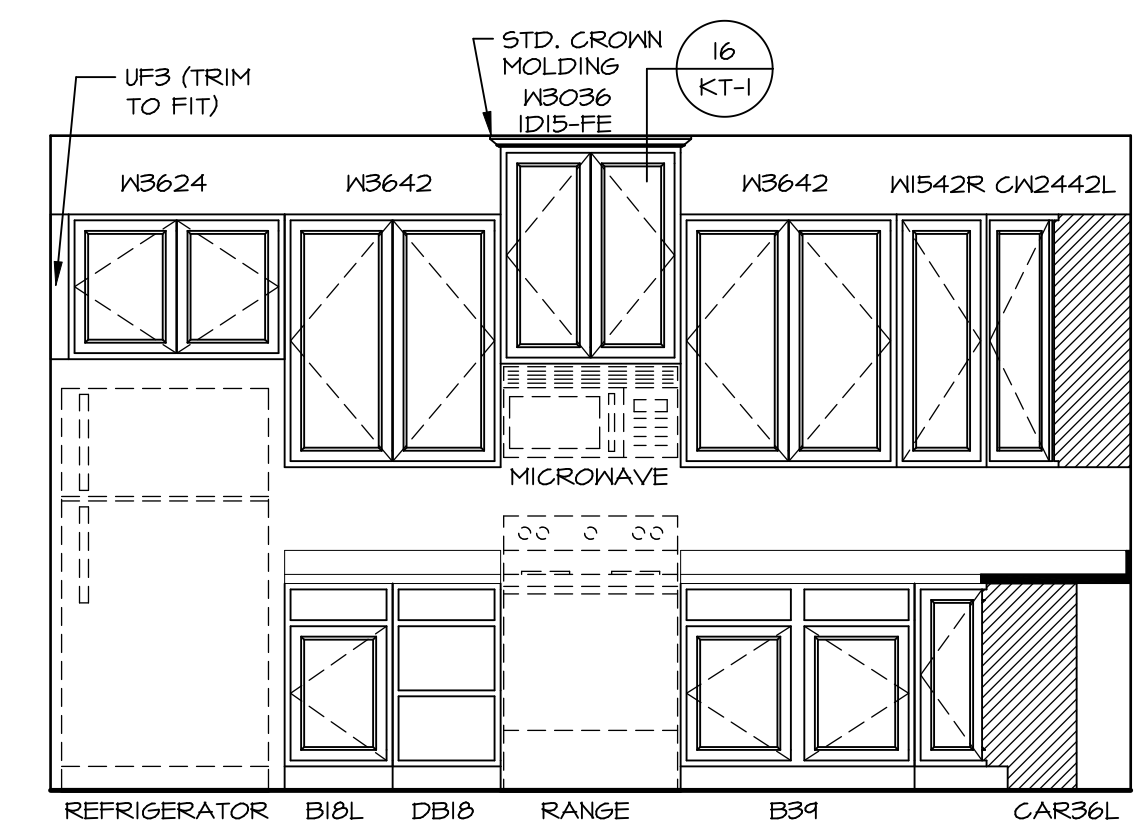
KITCHEN COUNTERTOP PLAN-KT-2862
 SCALE: 3/8" = 1'-0"
 STANDARD KITCHEN MORNING ROOM



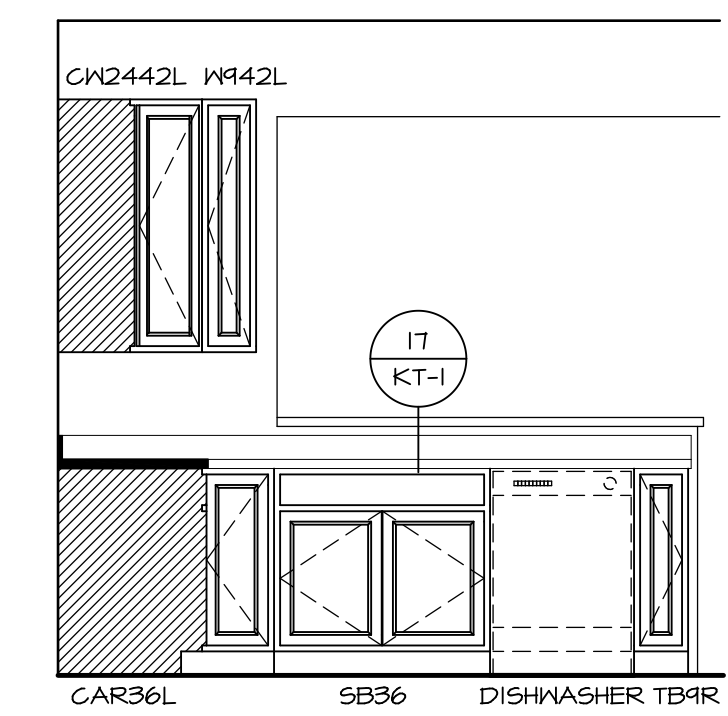
KITCHEN CABINET PLAN-KC-3214
 SCALE: 3/8" = 1'-0"
 GOURMET ISLAND



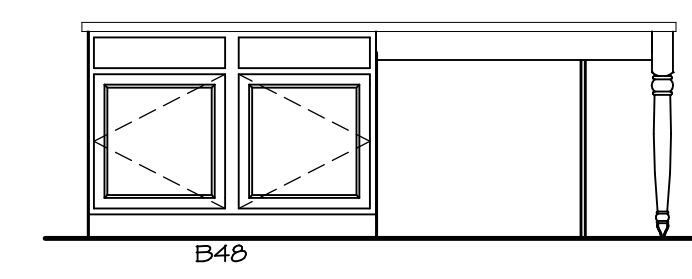
KITCHEN COUNTERTOP PLAN-KT-3214
 SCALE: 3/8" = 1'-0"
 GOURMET ISLAND



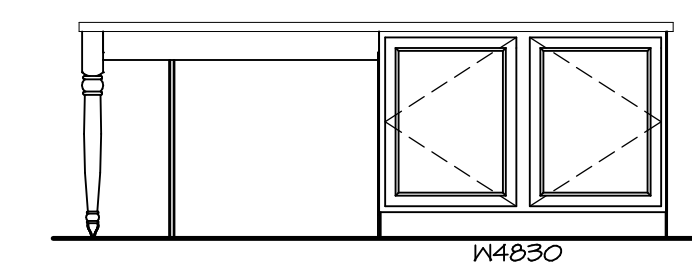
A KITCHEN ELEVATION
 SCALE: 3/8" = 1'-0"



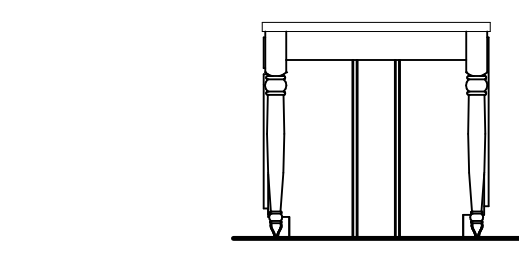
C KITCHEN ELEVATION
 SCALE: 3/8" = 1'-0"



F KITCHEN ELEVATION
 SCALE: 3/8" = 1'-0"



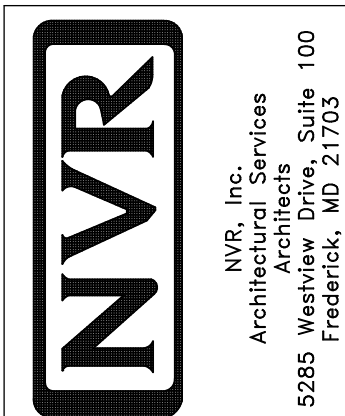
G KITCHEN ELEVATION
 SCALE: 3/8" = 1'-0"

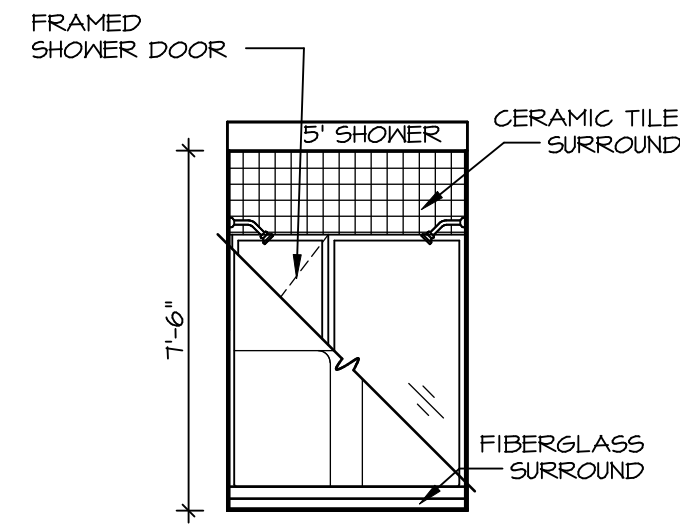


H KITCHEN ELEVATION
 SCALE: 3/8" = 1'-0"

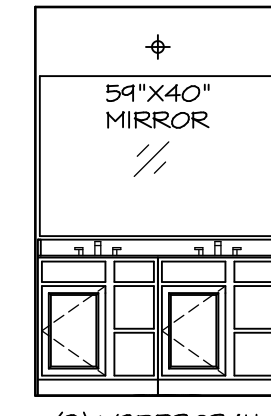
SHEET NO. A-12	MODEL PALERMO	SET NO. PALOO	REVISIONS
	DRAWING TITLE	VERSION 03	DATE
70	OPTION DESCRIPTION	DRAWN BY	DATE
		DATE	OPTION

NVR, Inc., owner, expressly reserves its copyright in these plans. These plans are not to be reproduced, changed, copied, or otherwise used in any way without the written consent of NVR, Inc.

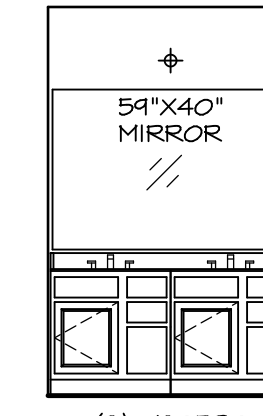




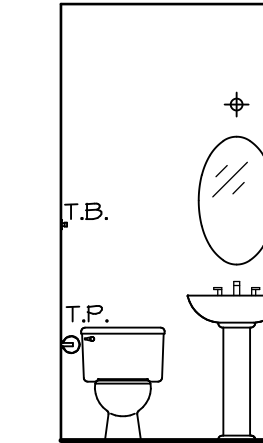
N OWNER'S BATH
SCALE: 1/4" = 1'-0"



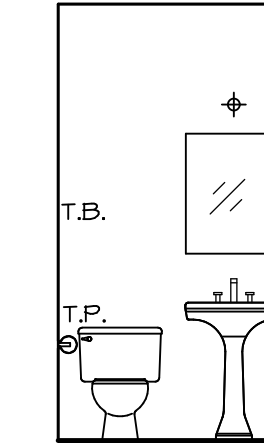
J OWNER'S BATH
SCALE: 1/4" = 1'-0"



E BATH #1
SCALE: 1/4" = 1'-0"

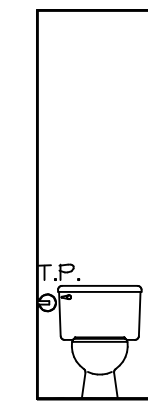


PEDESTAL SINK WITH OVAL MIRROR "52B"

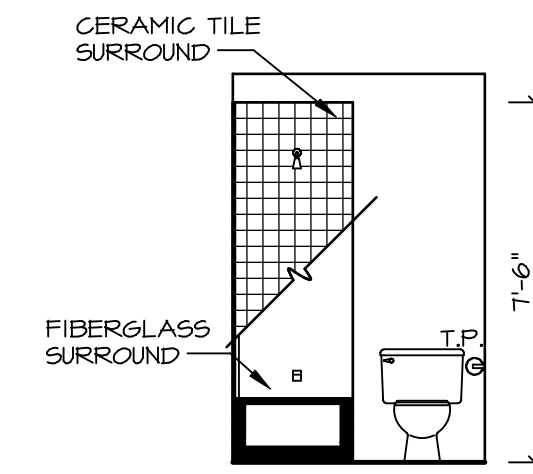


PEDESTAL SINK WITH SQUARE MIRROR "52C"

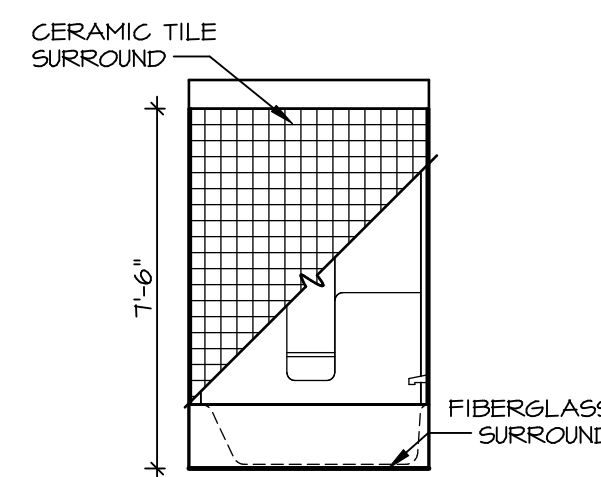
B POWDER ROOM
SCALE: 1/4" = 1'-0"



H OWNER'S BATH
SCALE: 1/4" = 1'-0"



G BATH #1
SCALE: 1/4" = 1'-0"



F BATH #1
SCALE: 1/4" = 1'-0"

NOTES:

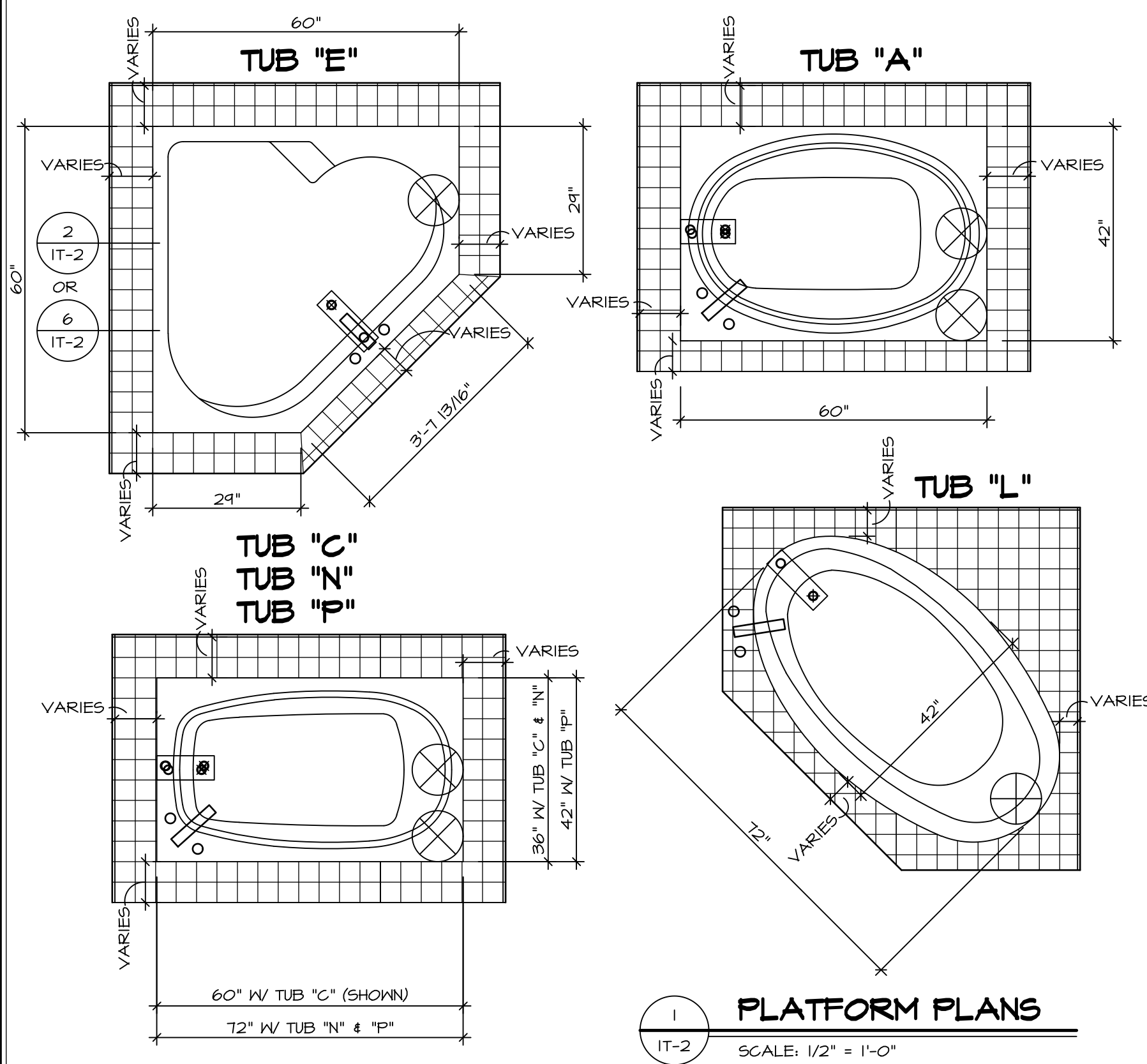
1. TEMPERED GLASS SHOWER ENCLOSURE WITH SWING DOOR OR OPTIONAL SLIDING DOOR BY DIVISION
2. TUB ACCESS PANELS PROVIDED AS NEEDED, ALL MATERIALS BY DIVISION
3. REFER TO SHEET IT-2 FOR TUB AND SHOWER DETAILS.
4. ALL V5DB24-42 DRAWERS TO BE SET ON RIGHT HAND.
5. BATH ELEVATIONS ARE SHOWN PER PLAN.

REV. NO.	DATE	REMARKS
1	08/04/18	TH - DRAINING ALIGNMENT

SET NO. PALOO VERSION 03 DRAWN BY DATE: OPTION	MODEL PALERMO DRAWING TITLE BATH ELEVATIONS OPTION DESCRIPTION
--	--

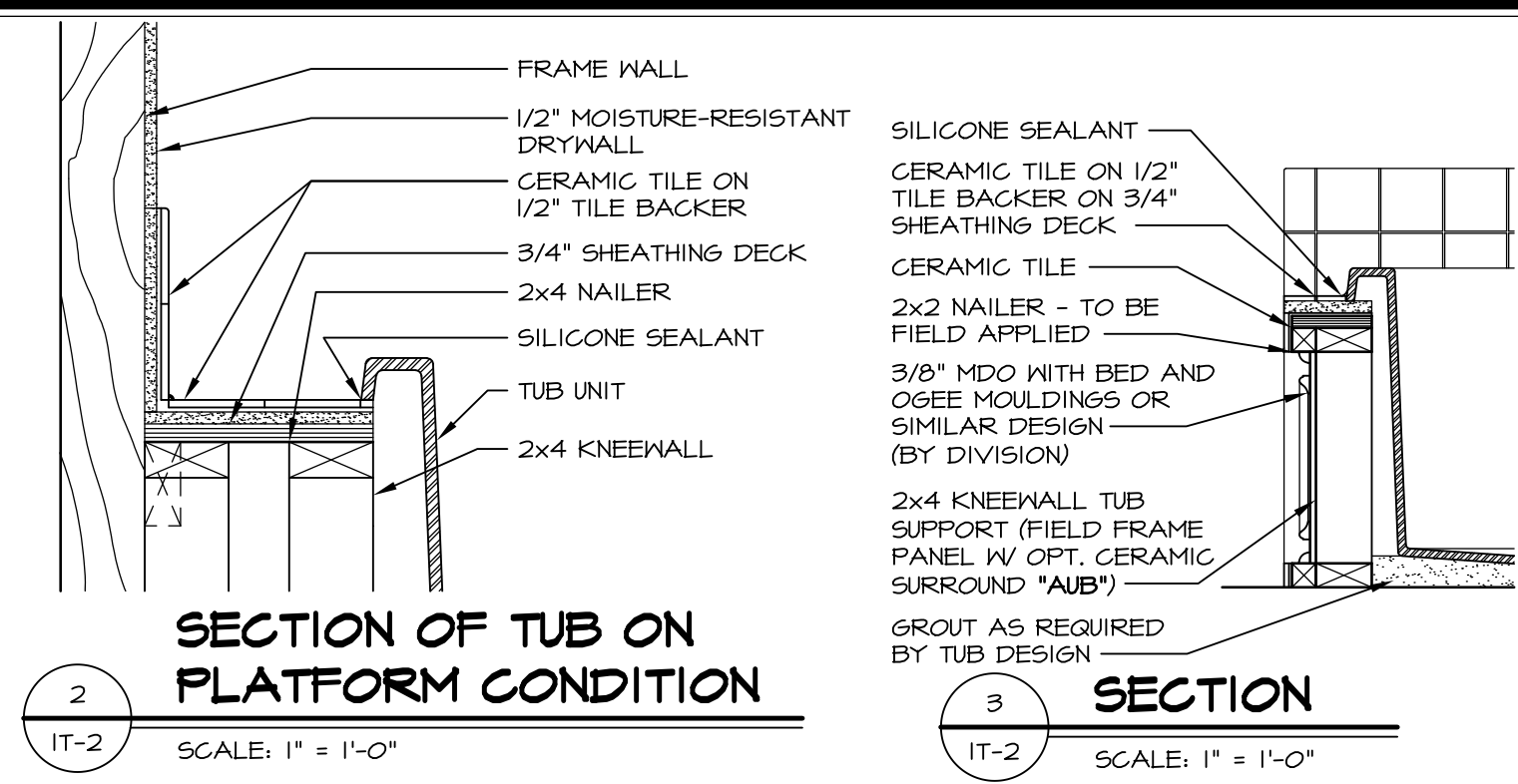
NVR NVR, Inc. Architectural Services Architects 5285 West Frederick, MD 21703	SHEET NO. A-13 72
---	--------------------------------

NVR, Inc., owner, expressly reserves its copyright in these plans. These plans are not to be reproduced, changed, copied, or otherwise used in any way without the written consent of NVR, Inc.

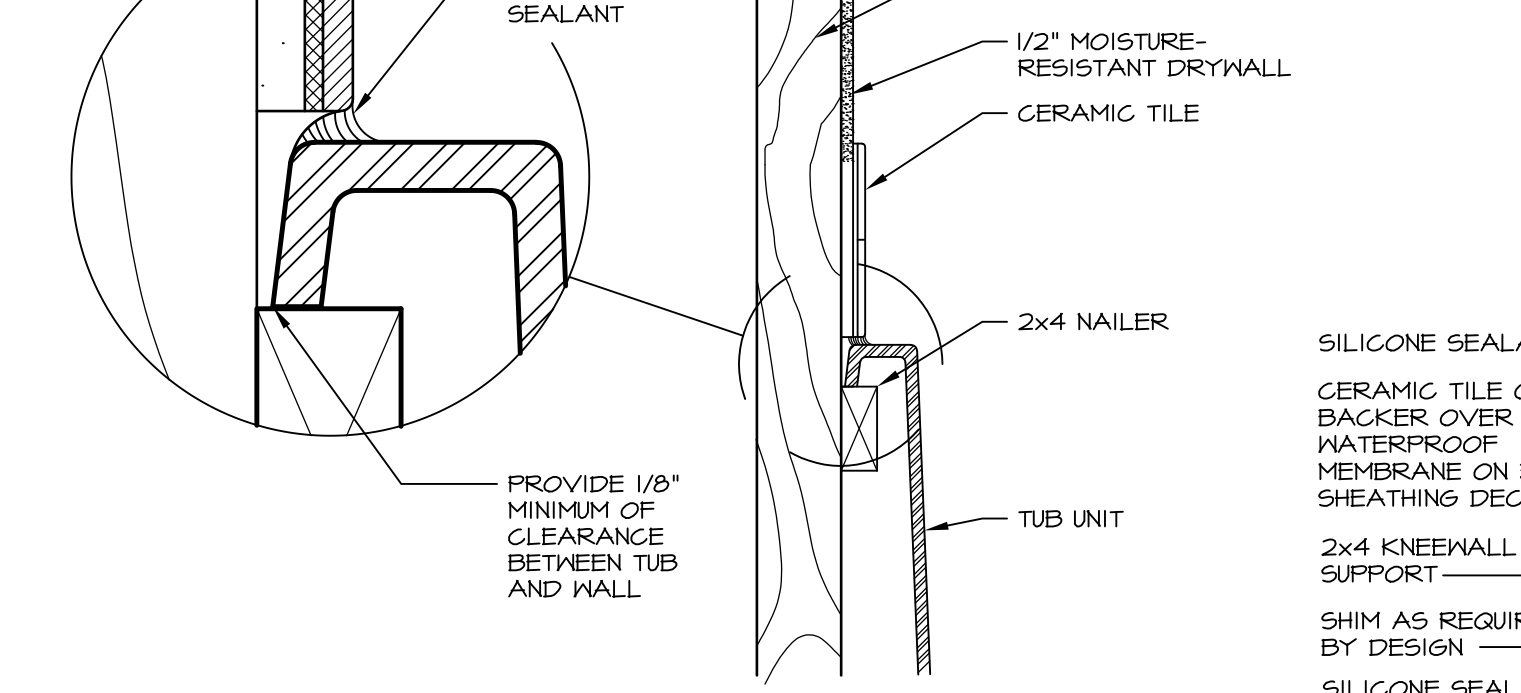


1 PLATFORM PLANS
SCALE: 1/2" = 1'-0"

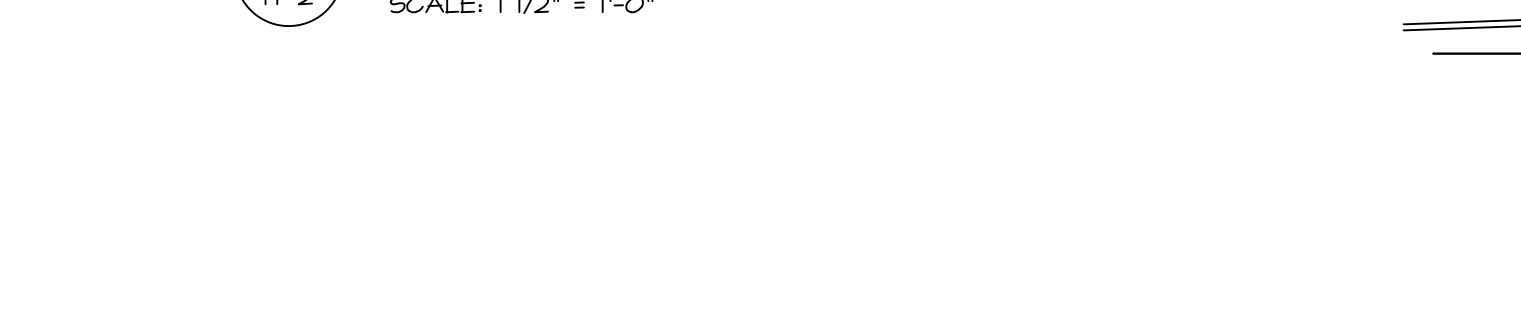
TUB	MANUF.	HEIGHT	WIDTH	LENGTH	TUB DECK PANEL HEIGHT
"A"	KOHLER/ STERLING	18 3/4"	42"	60"	17 1/8"
"C"	KOHLER/ STERLING	18 3/4"	36"	60"	17 1/8"
"E"	KOHLER/ STERLING	19 1/2"	60"	60"	17 7/8"
"L"	KOHLER/ STERLING	18 1/2"	42"	72"	16 7/8"
"N"	KOHLER/ STERLING	18 3/4"	36"	72"	17 1/8"
"P"	KOHLER/ STERLING	18 3/4"	42"	72"	17 1/8"



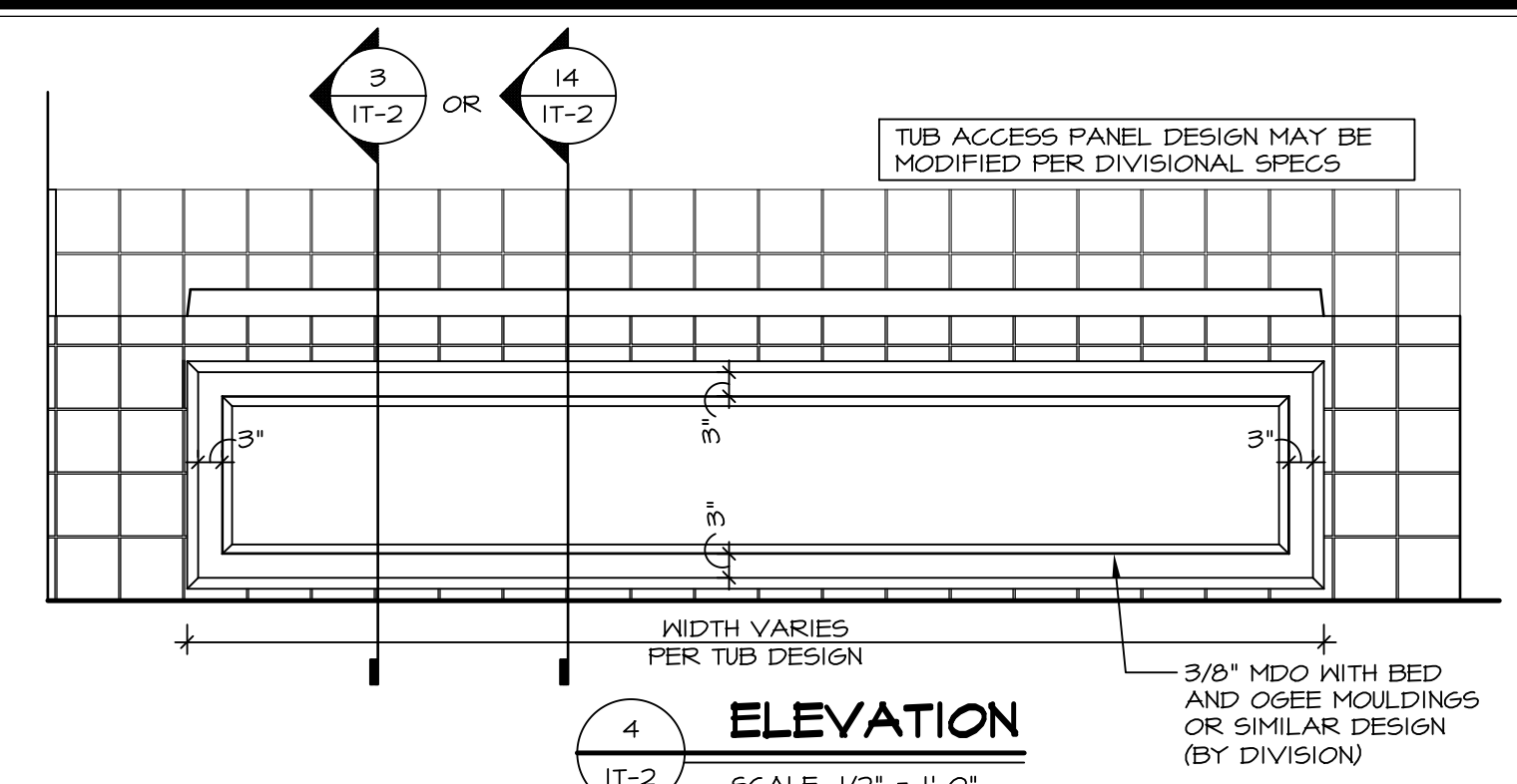
2 SECTION OF TUB ON PLATFORM CONDITION
SCALE: 1" = 1'-0"



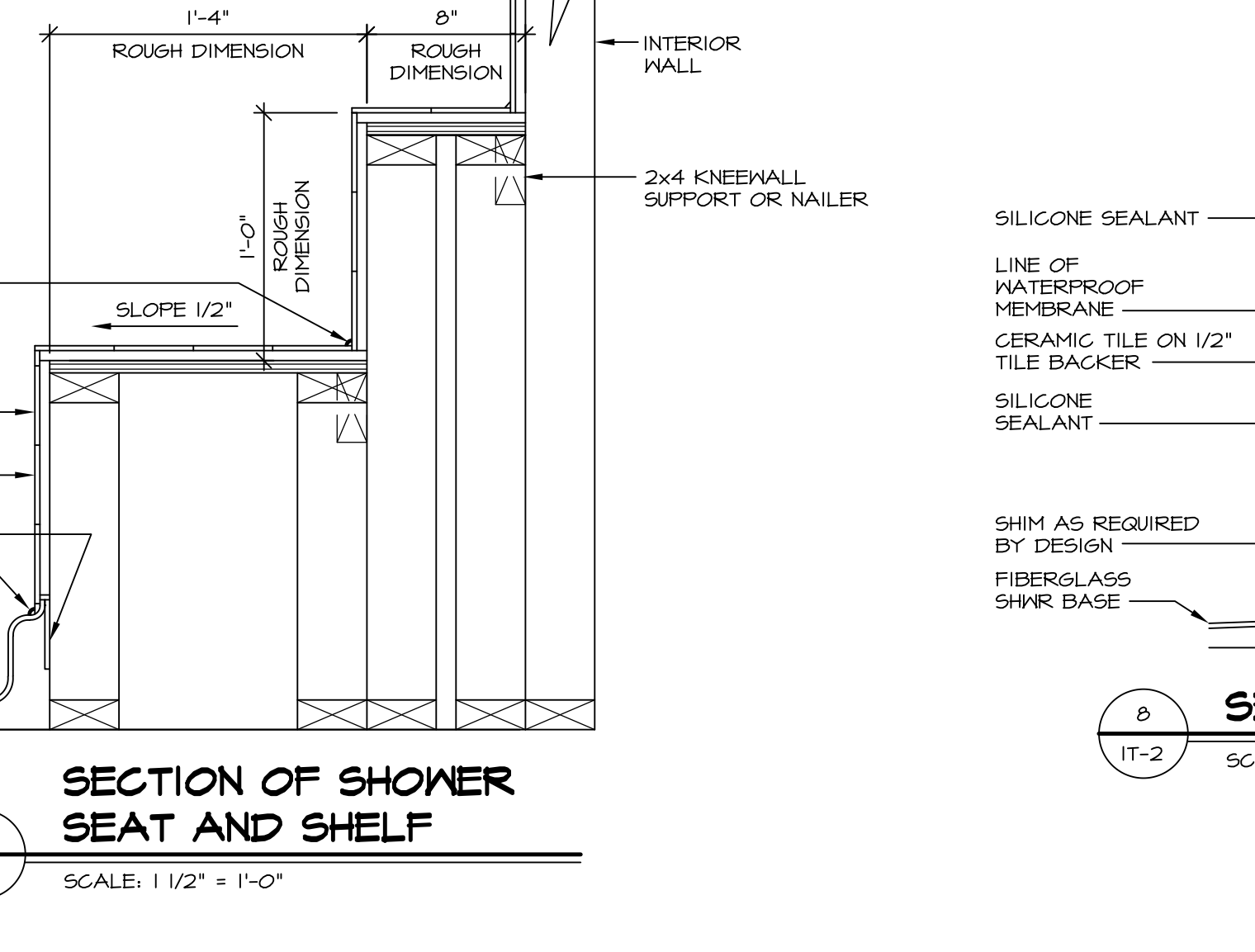
3 SECTION
SCALE: 1" = 1'-0"



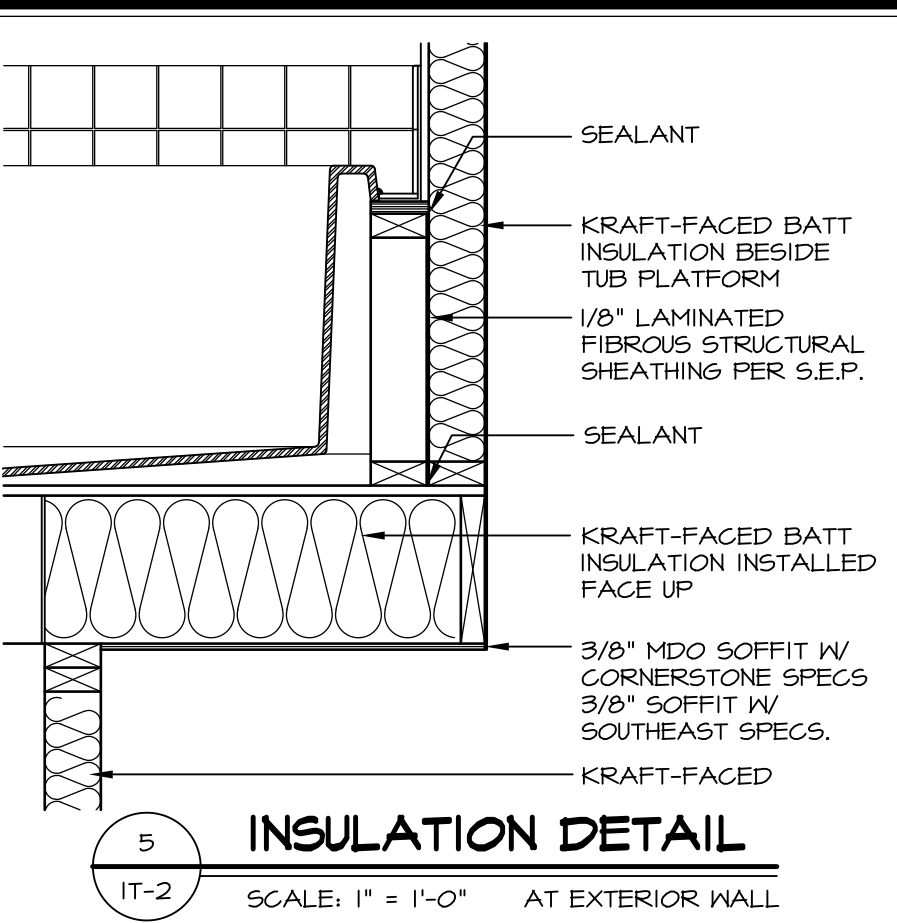
6 SECTION OF TUB TO WALL CONDITION
SCALE: 1 1/2" = 1'-0"



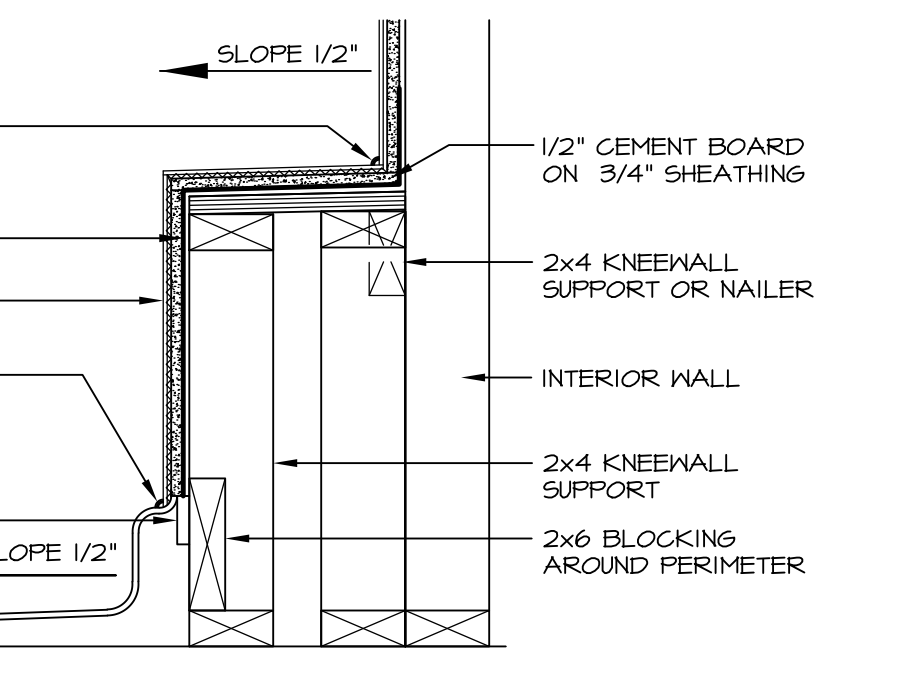
4 ELEVATION
SCALE: 1/2" = 1'-0"



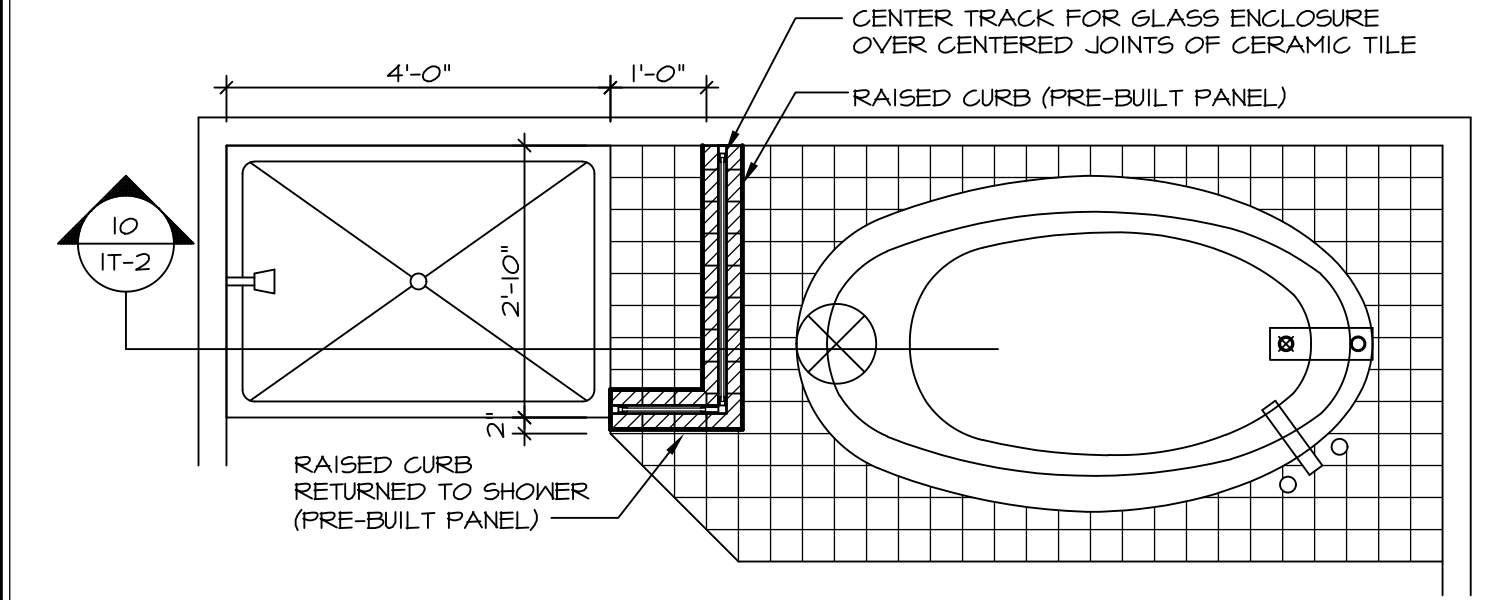
7 SECTION OF SHOWER SEAT AND SHELF
SCALE: 1 1/2" = 1'-0"



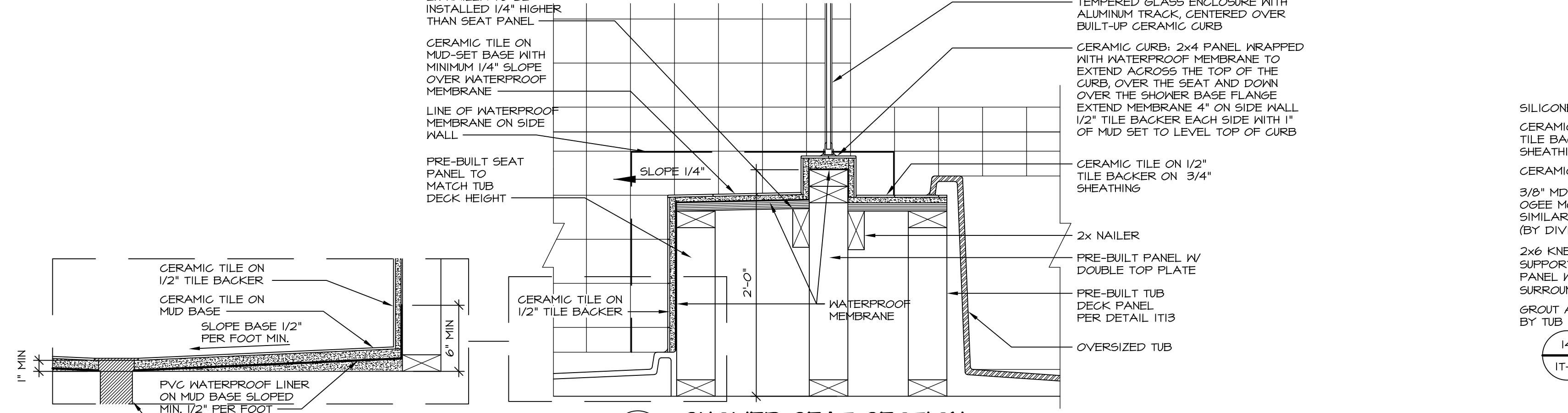
5 INSULATION DETAIL
SCALE: 1" = 1'-0" AT EXTERIOR WALL



8 SECTION OF SHOWER SEAT
SCALE: 1-1/2" = 1'-0" FIBERGLASS SHOWER BASE



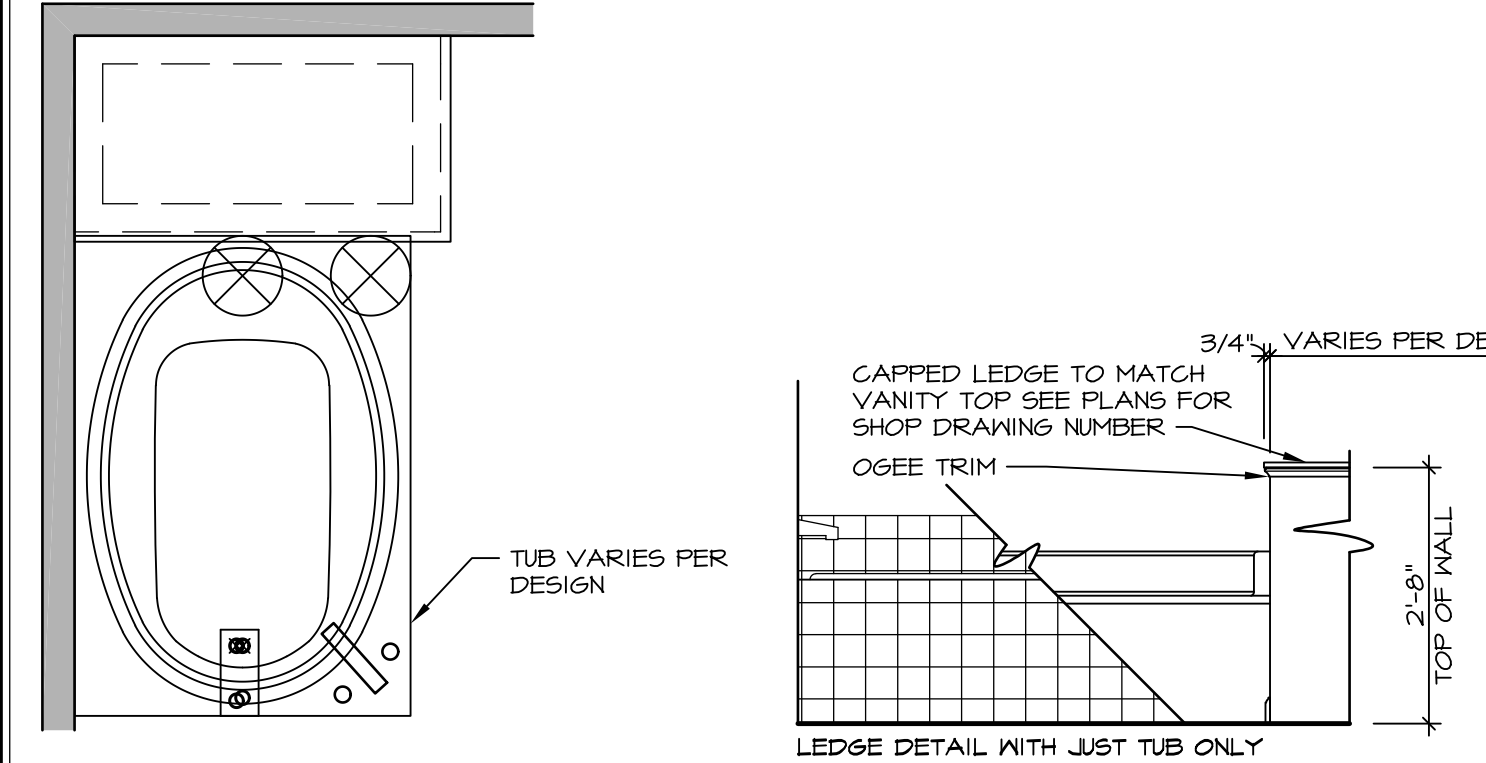
9 SHOWER SEAT PLAN / DETAIL
SCALE: 1/2" = 1'-0"



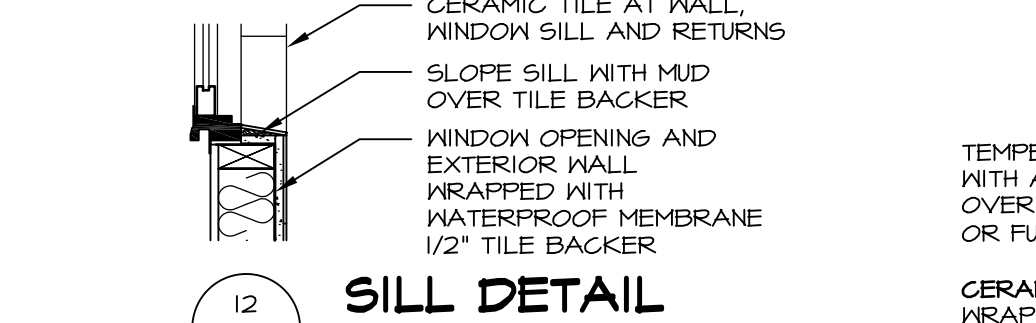
10 SHOWER SEAT SECTION
SCALE: 1-1/2" = 1'-0"



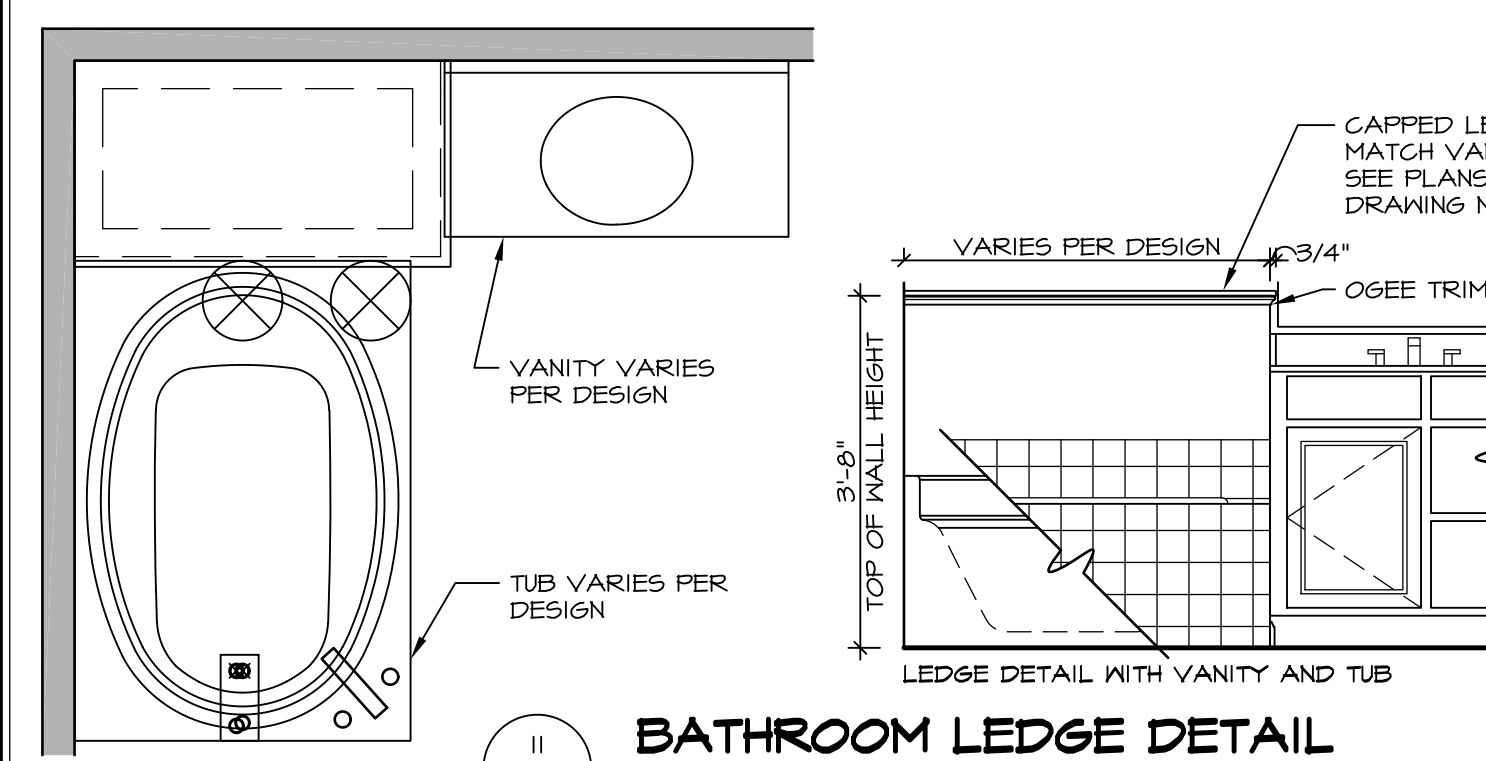
11 ALTERNATE SHOWER PAN DETAIL



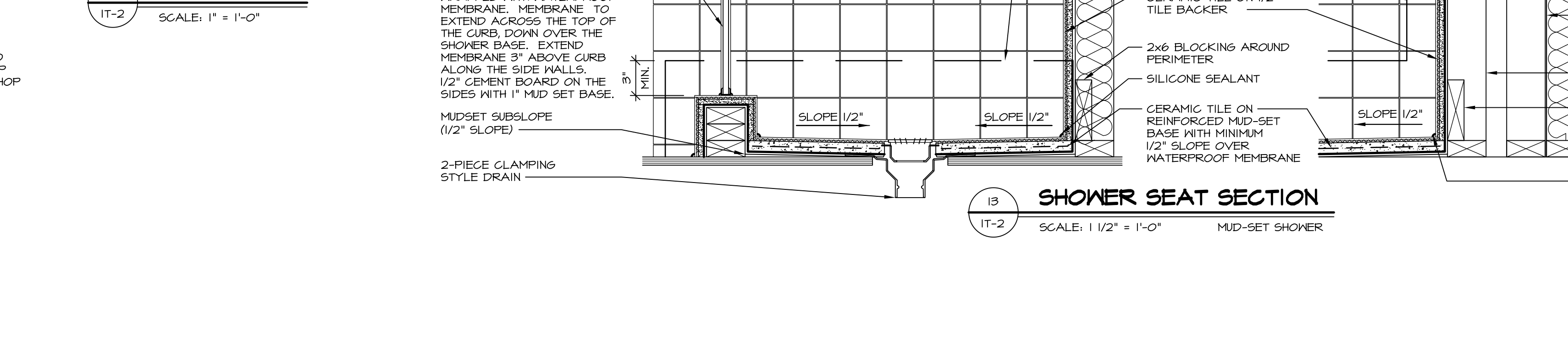
12 BATHROOM LEDGE DETAIL
SCALE: 1/2" = 1'-0"



12 SILL DETAIL
SCALE: 1" = 1'-0"



11 BATHROOM LEDGE DETAIL
SCALE: 1/2" = 1'-0"



13 SHOWER SEAT SECTION
SCALE: 1 1/2" = 1'-0" MUD-SET SHOWER

REVISIONS

REV. NO.	DATE	DESCRIPTION
1	5/1/17	EBP - REVISED DETAIL 1 AND 11 TO REMOVE TUB ACCESS PANEL REF. (DSS #15 5414)
2	9/2/17	EBP - REVISED T-FLY NOTE TO CALL OUT LFS
3	9/2/17	EBP - REVISED NOTE ON DETAIL #1 - REVISED ORDER OF MATERIAL PARA#4934

NVR, Inc., owner, expressly reserves its common law copyright and other property rights in these plans. These plans are not to be reproduced, copied, or otherwise used in any way without the written consent of NVR, Inc. If you are a contractor, you are not to be assigned to any third party, without first obtaining the expressed written consent of NVR, Inc.

NVR
NVR, Inc.
Architectural Services
5285 Westpark Drive
Frederick, MD 21703

SET NO. NVR
VERSION
DRAWN BY
DATE:
OPTION

MODEL
STANDARD DETAILS
DRAWING TITLE
INTERIOR TRIM DETAILS
BATH DETAILS
OPTION DESCRIPTION

SHEET NO.
IT-2